

The current proposal is:

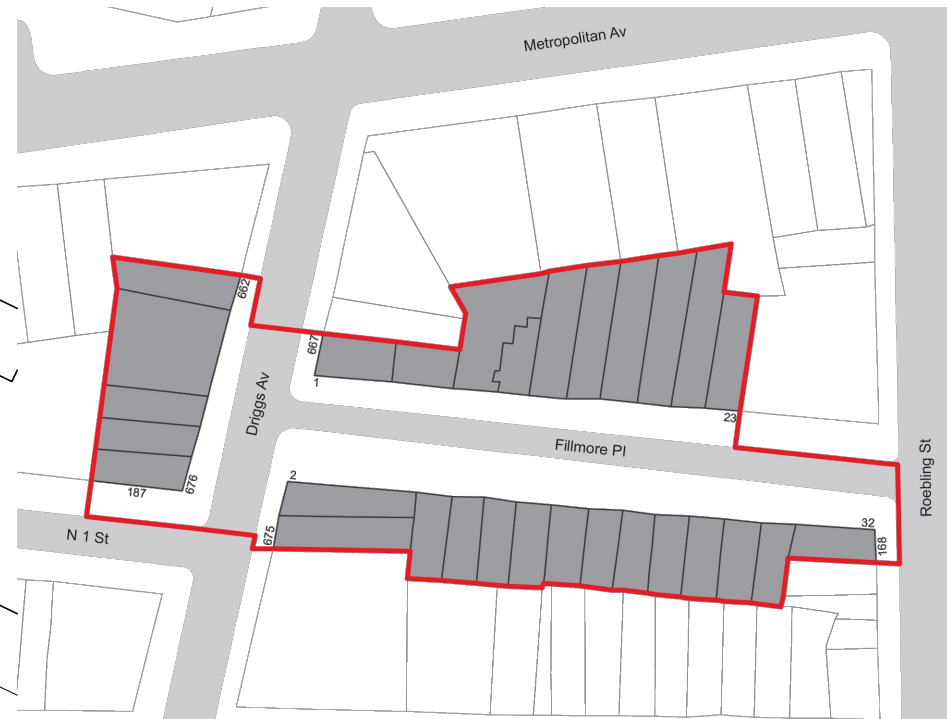
Preservation Department – Item 1, LPC-25-11799

**17 Fillmore Place – Fillmore Place Historic District
Borough of Brooklyn**

Note: this is a Public Meeting item. No public testimony will be received today as the hearing on this item is closed.



Fillmore Place Historic District



Fillmore Place Historic District
Borough of Brooklyn, NY
Landmarks Preservation Commission

Calendared: January 13, 2009
Public Hearing: March 24, 2009
Designated: May 12, 2009

Boundary of Historic District
Tax Map Lots in Historic District



SITE PLAN

SCOPE OF WORK

1. EXTEND 2ND FLOOR AND 3RD FLOOR IN REAR
2. NEW DOORS AT BASEMENT AND 1ST. FLOOR REAR LEVEL
3. NEW WINDOWS ON 2ND AND 3RD FLOOR REAR LEVEL
4. EXTEND EXISTING DECK
5. NEW STAIRS AND RAILING TO THE REAR YARD

KEY

17 FILLMORE PL	1 STORY ADDITION	3 STORY ADDITION
ADJACENT PROPERTIES	DECK	4 STORY ADDITION
VIEW LOCATION		

SCALE: 1/64" = 1'-0"

17 FILLMORE PL_COMMUNITY BOARD PRESENTATION

SITE PLAN / STREET VIEW

A00



19 FILLMORE PL

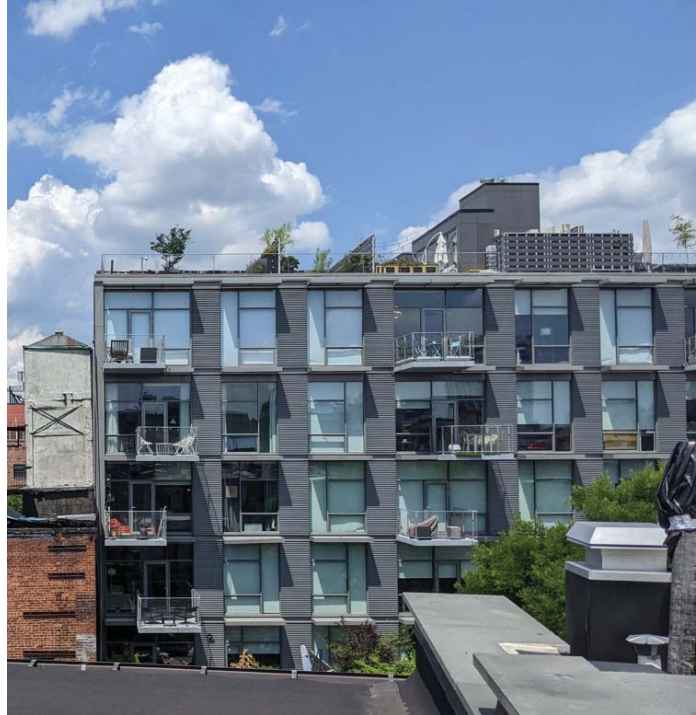
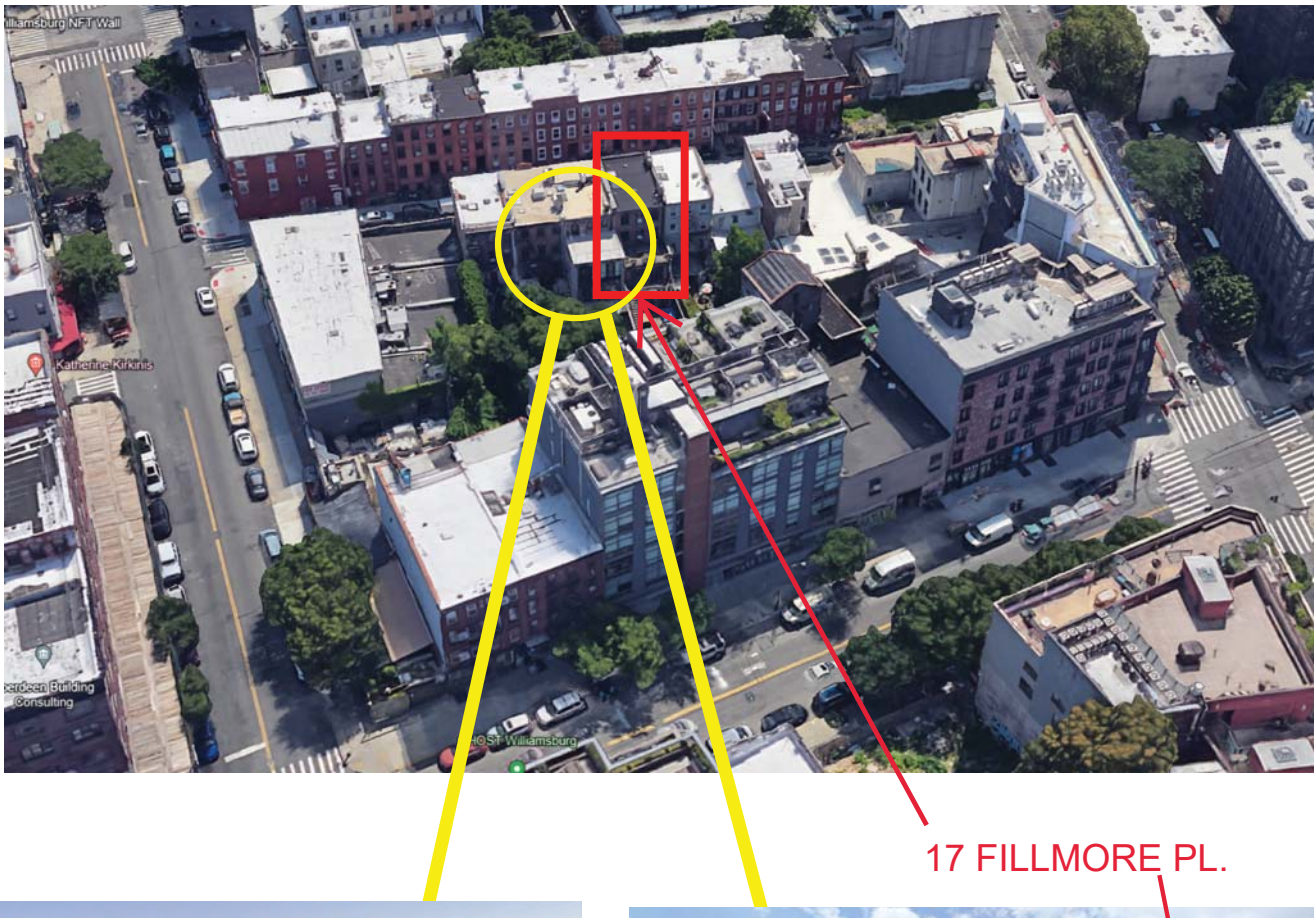
17 FILLMORE PL

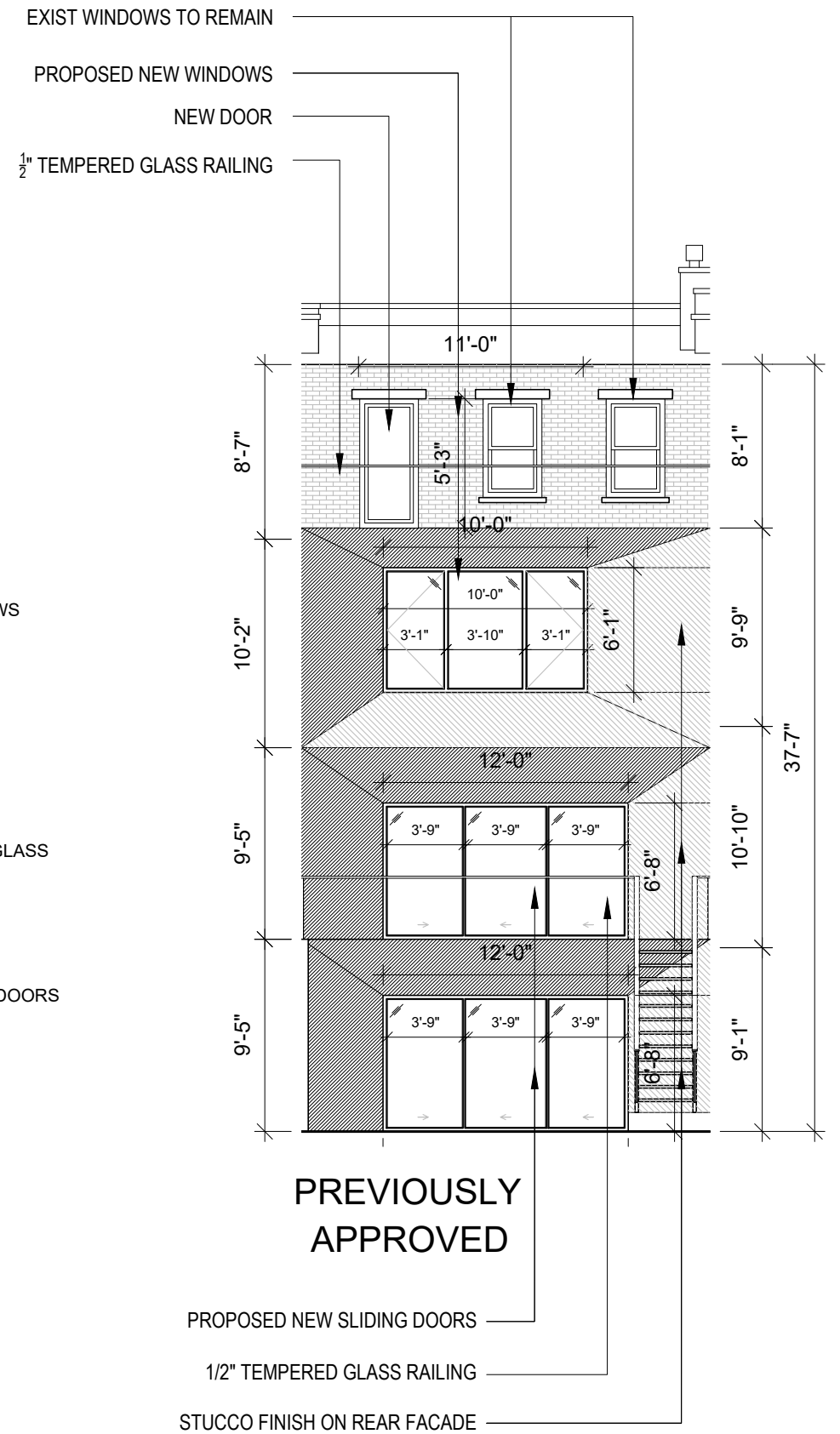
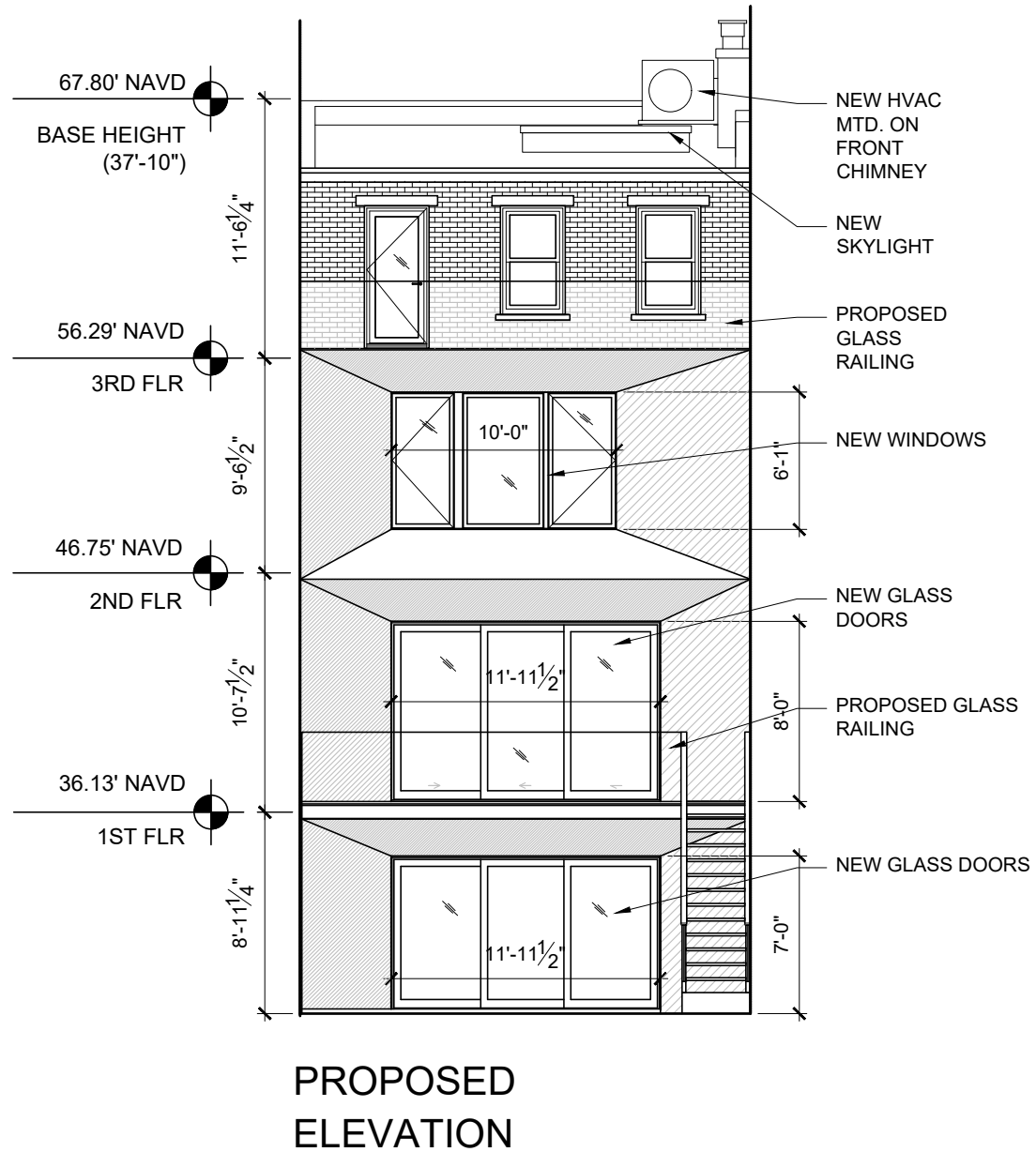
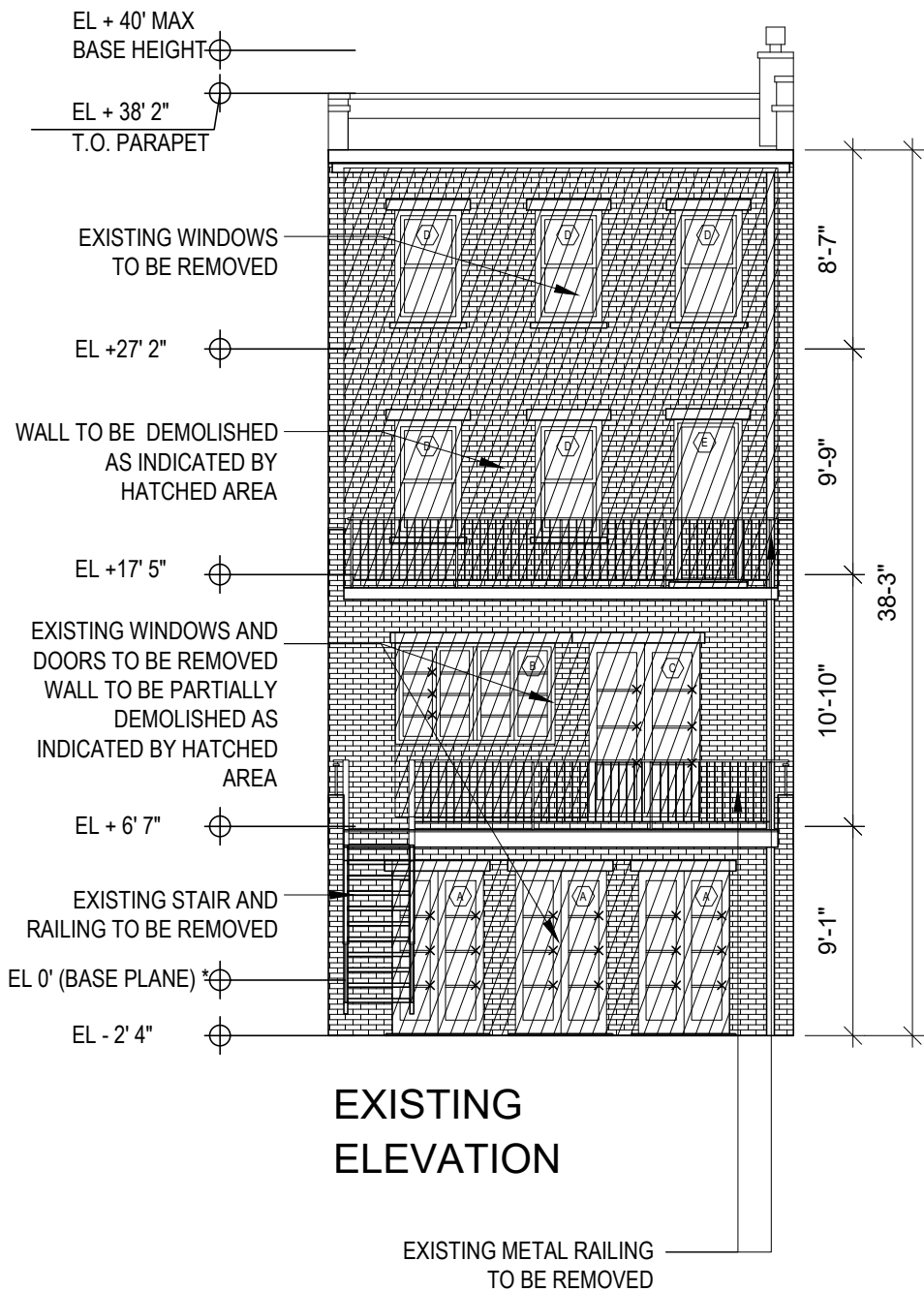


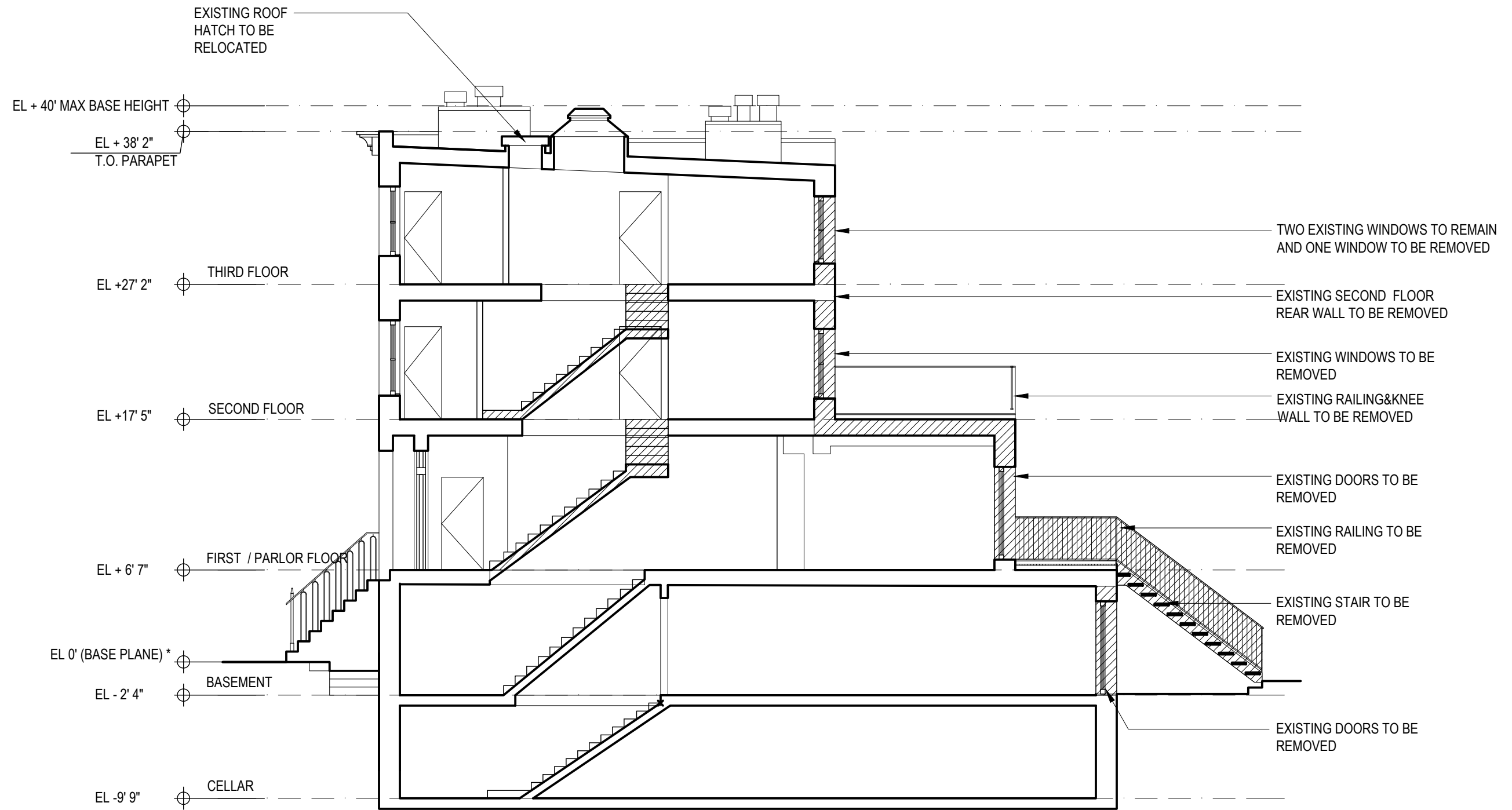
17 FILLMORE PL

15 FILLMORE PL



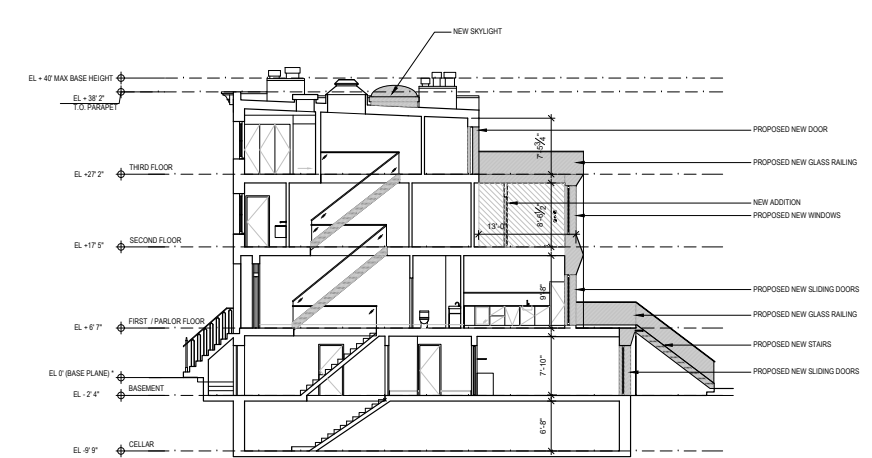
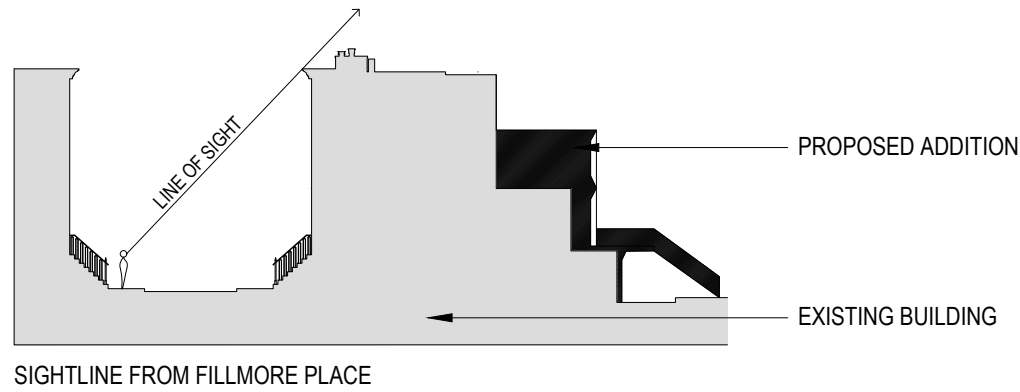




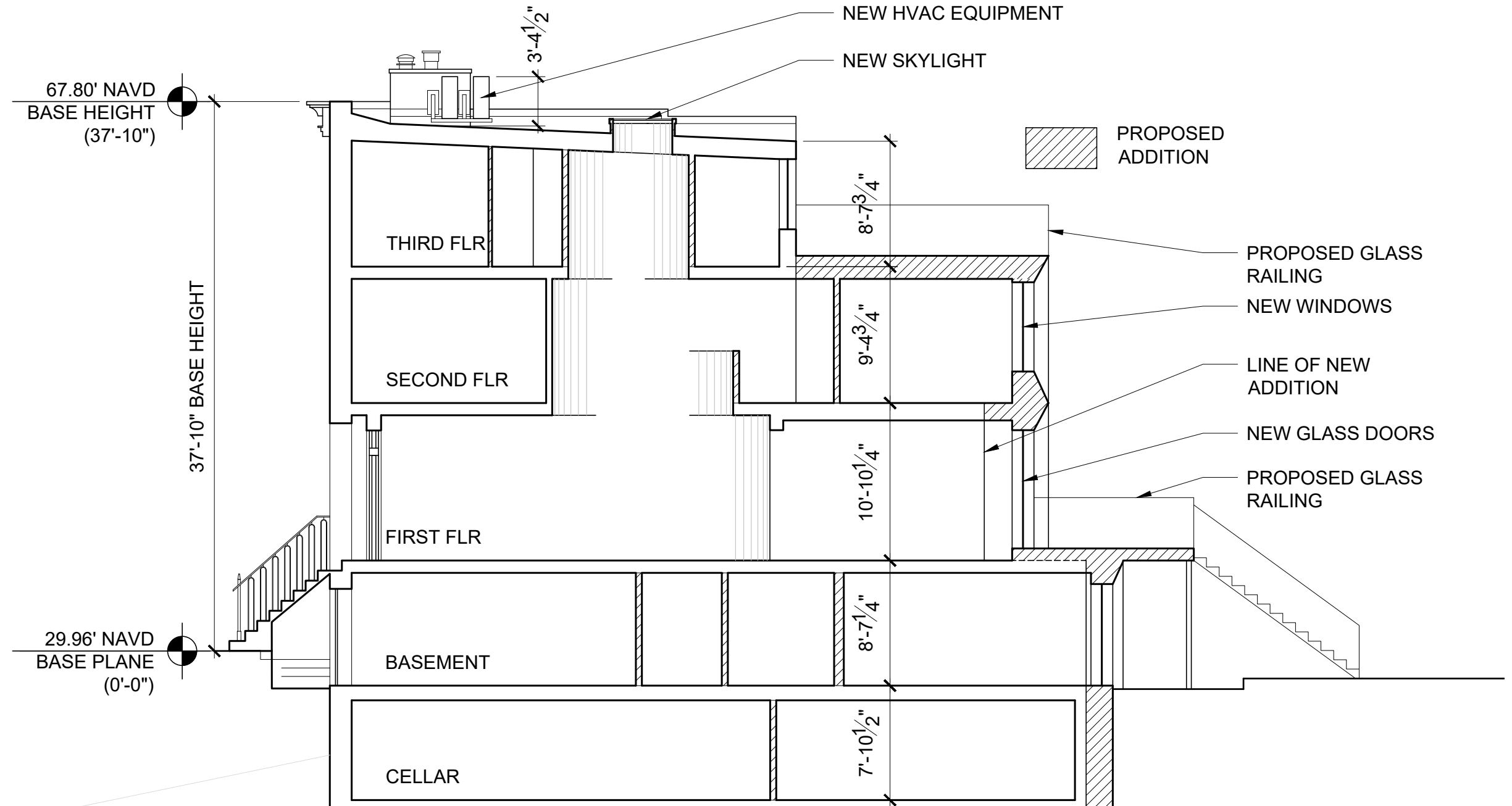


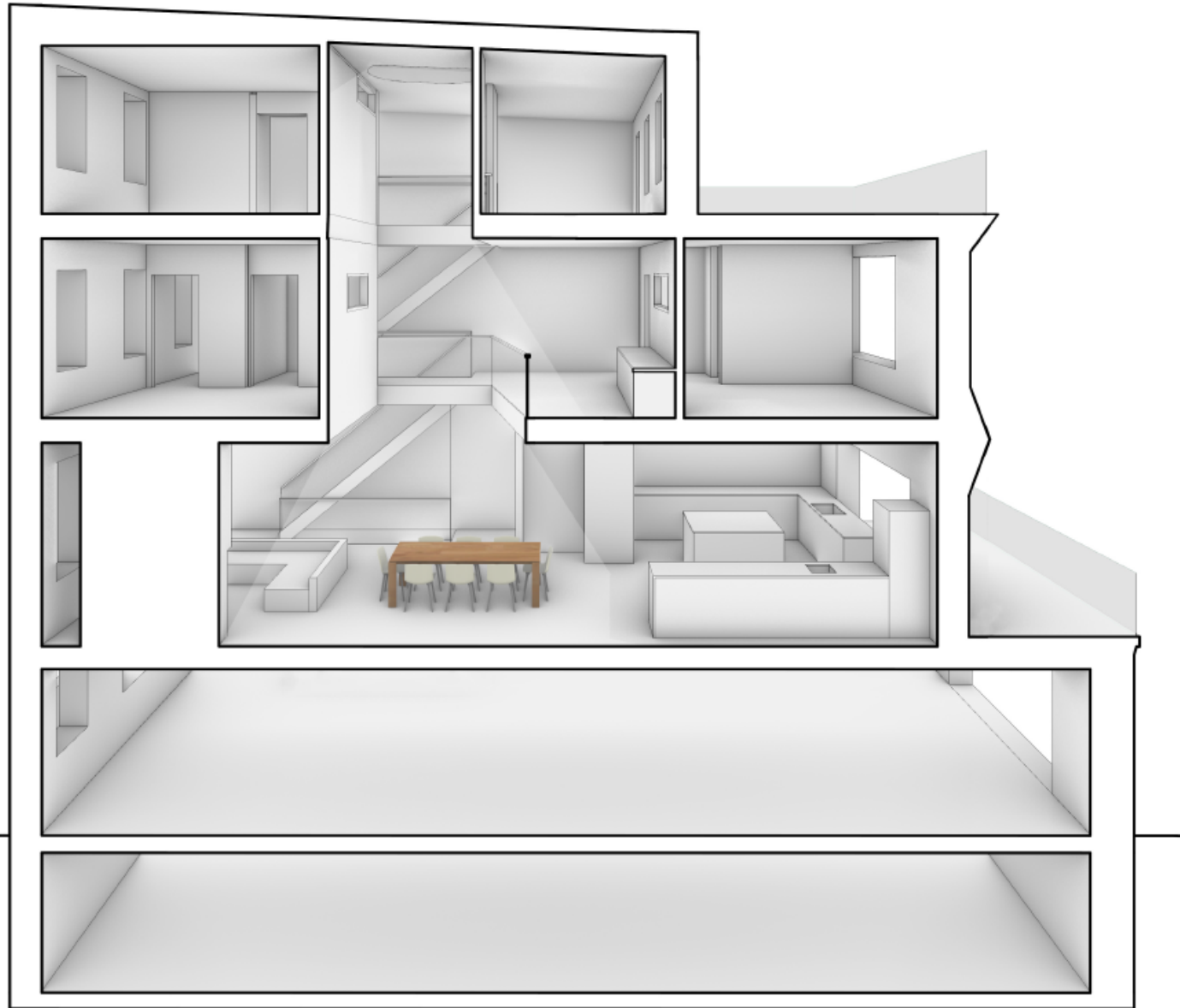
KEY

	EXISTING TO REMAIN
	PROPOSED EXSITING TO BE REMOVED

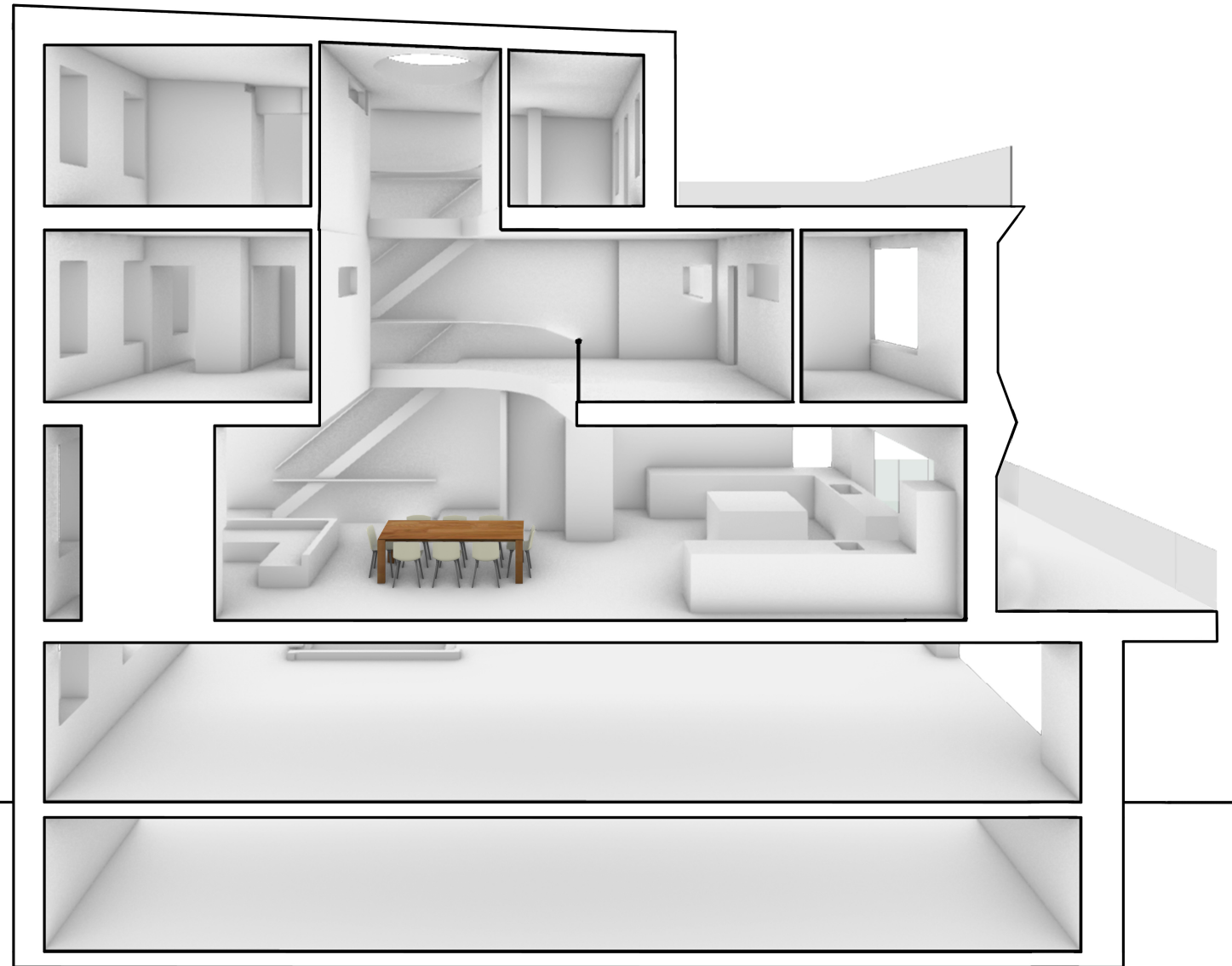


PREVIOUSLY APPROVED

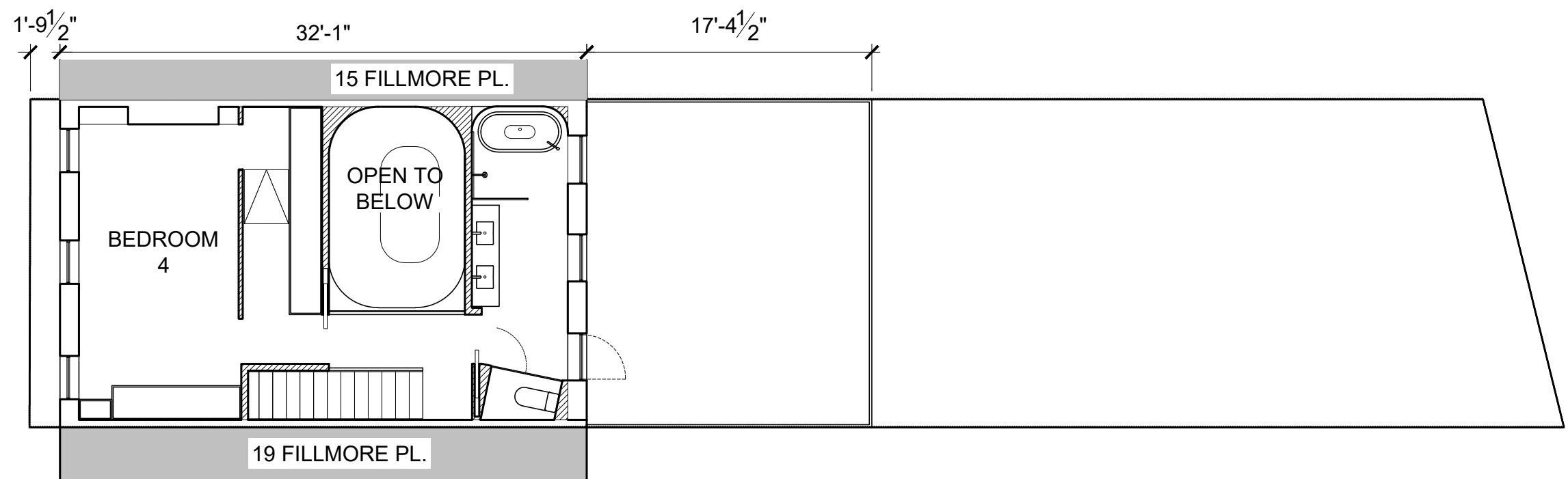




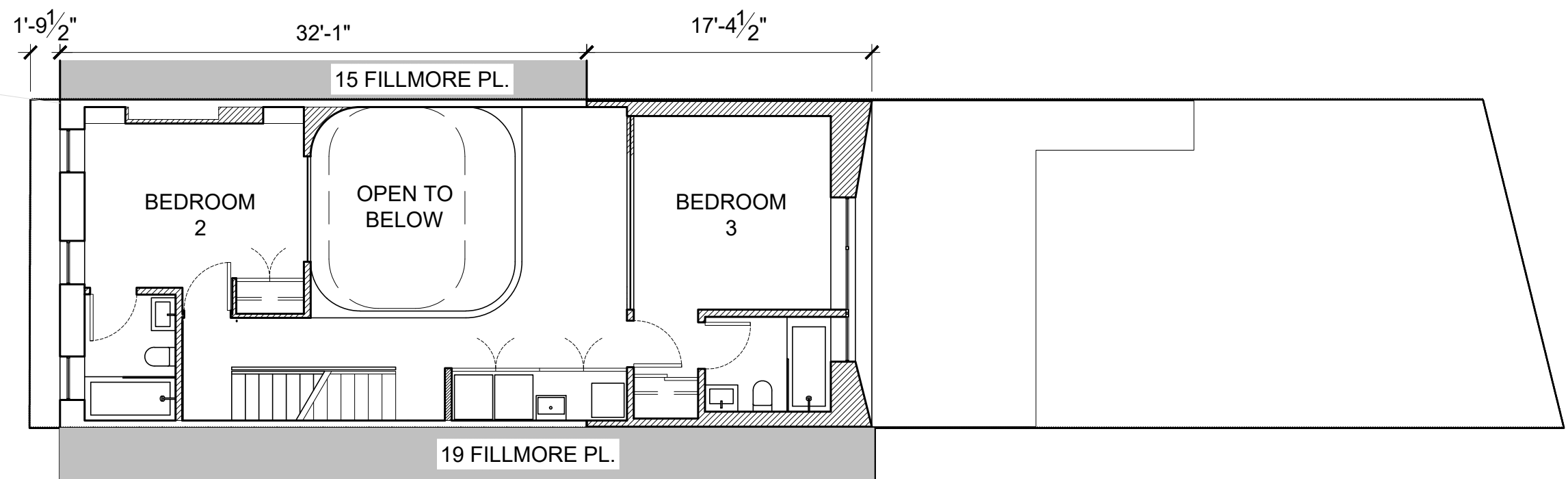
PREVIOUS



PROPOSED REVISED DESIGN

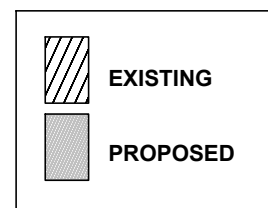


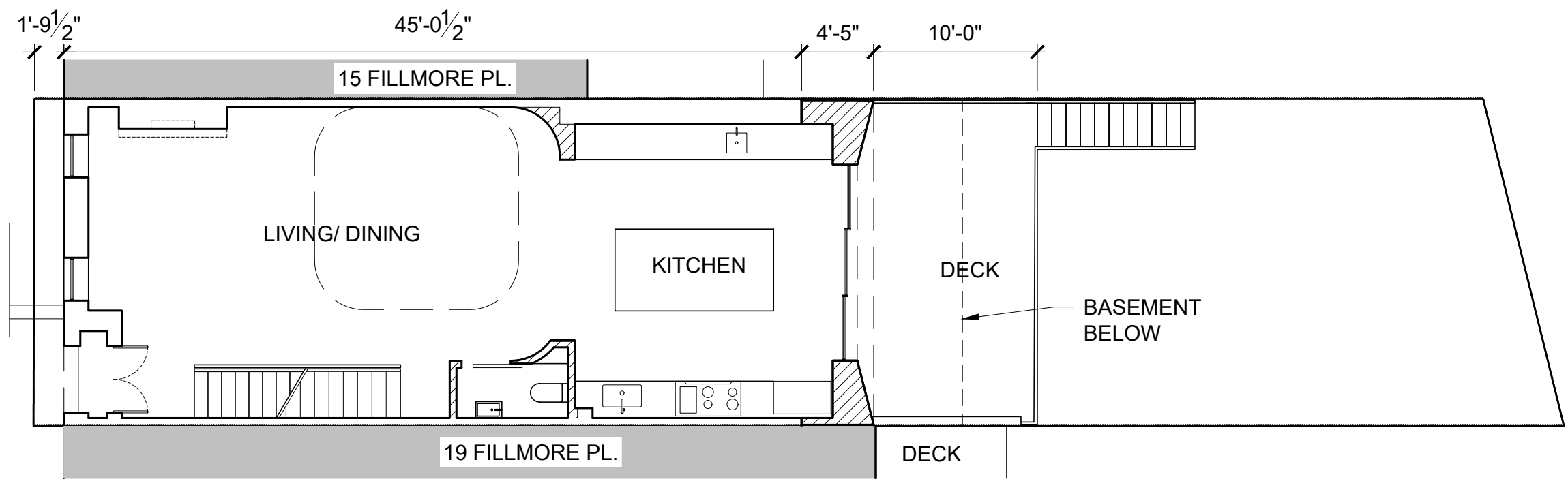
THIRD FLOOR



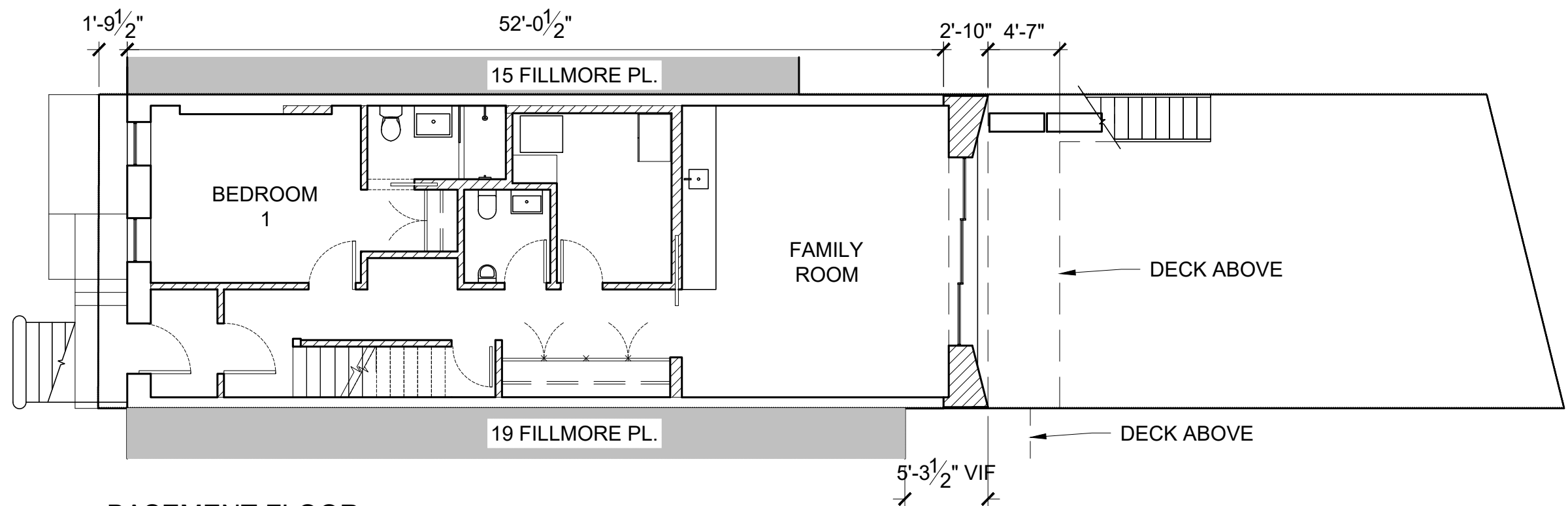
SECOND FLOOR

KEY



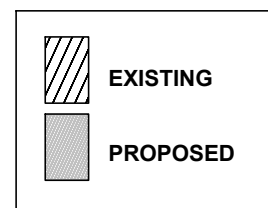


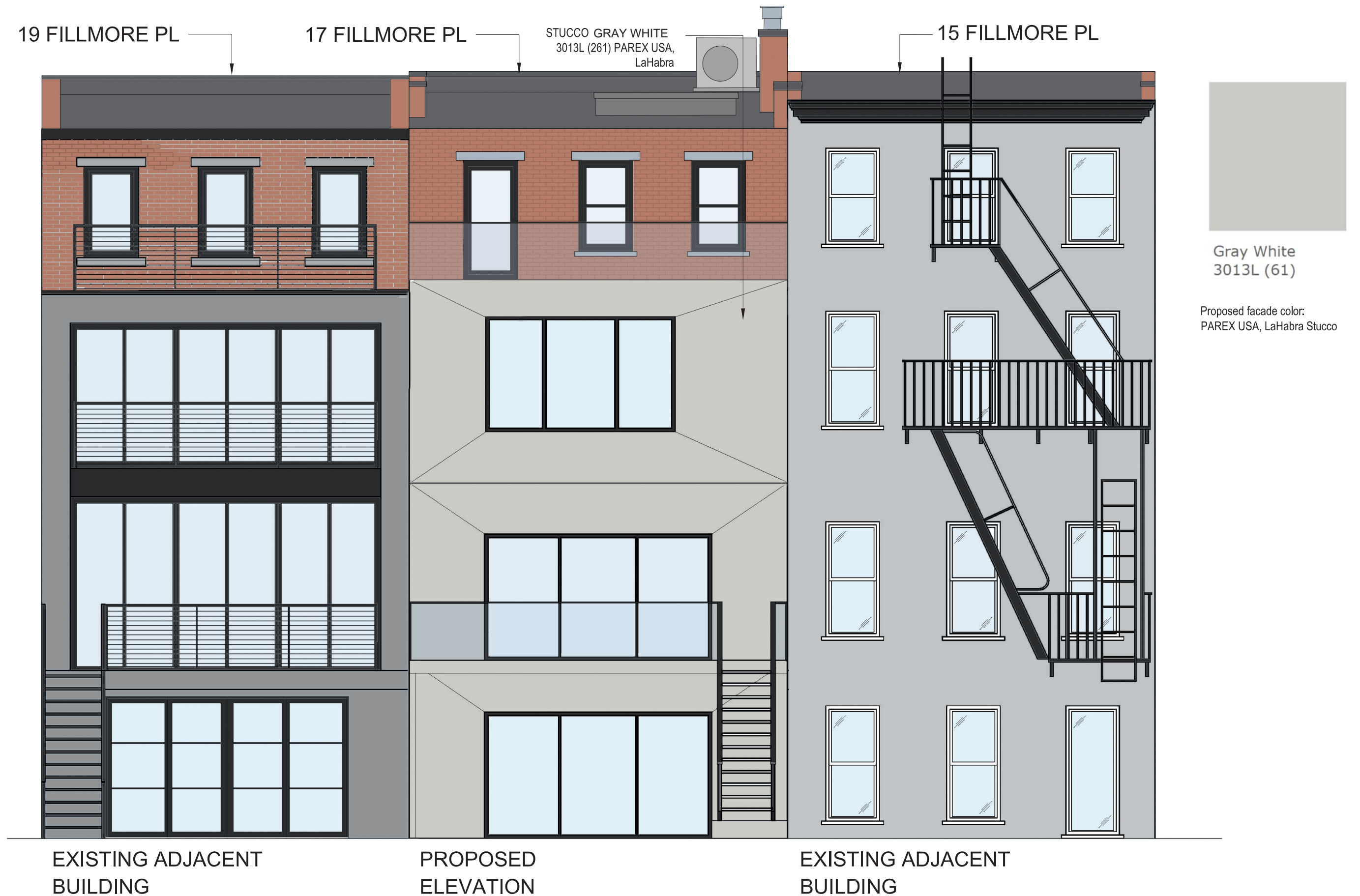
FIRST / PARLOR FLOOR



BASEMENT FLOOR

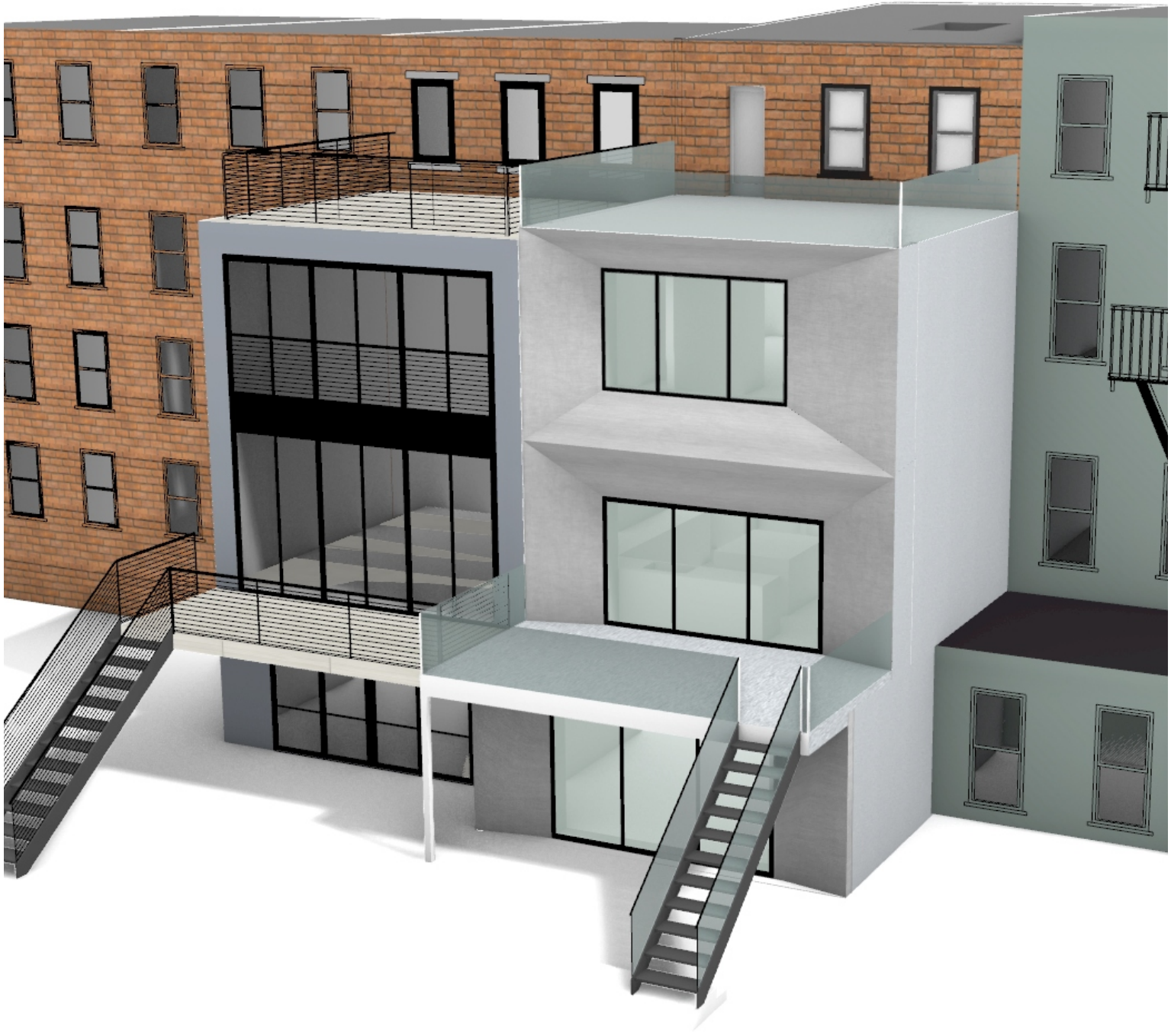
KEY







PREVIOUS

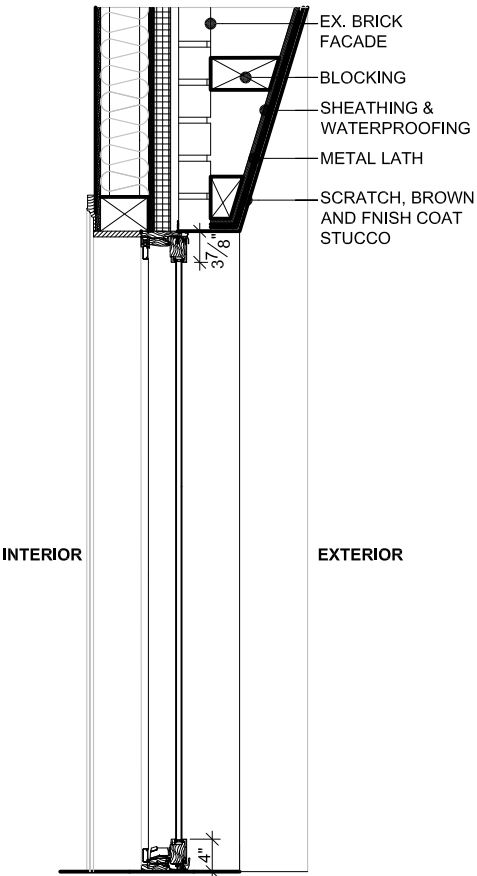


PROPOSED REVISED DESIGN

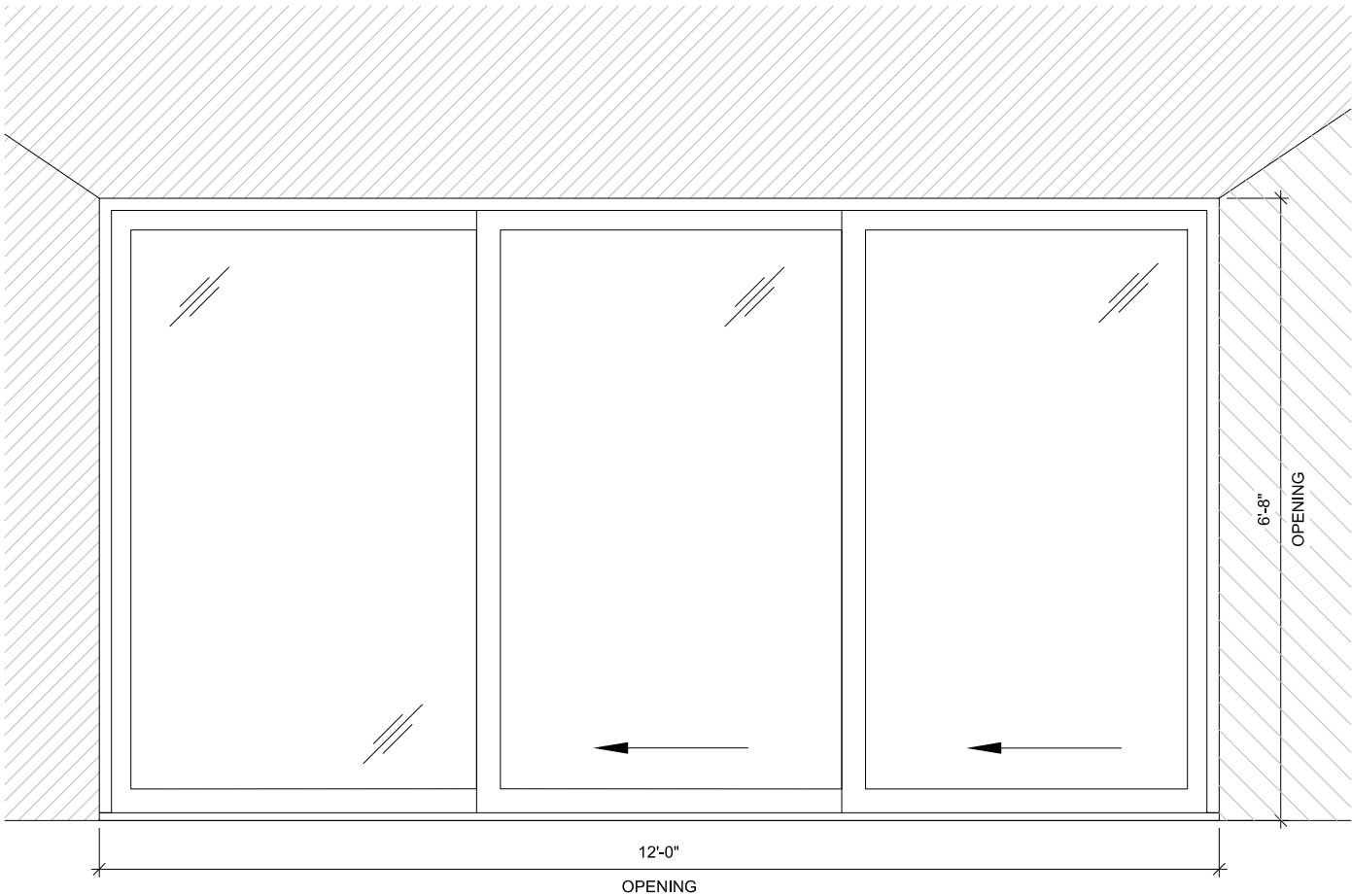
NEW SPECIFICATIONS FOR DOORS 'A' & 'B':
PELLA- ARCHITECT SERIES CONTEMPORARY, QUAD SLIDING DOOR,
ENDURACLAD EXTERIOR, NON-STANDARD SIZE
DOORS WITH FRAME EXPANDER (TRIMMED, FIELD
APPLIED, AND SEALED BY OTHERS)
CASING (FIELD APPLIED AD SEALED BY OTHERS),
COLOR -BLACK

NEW SPECIFICATIONS FOR WINDOWS 'C' & 'D':
PELLA- ARCHITECT SERIES CONTEMPORARY, TRADITIONAL
CASEMENT WINDOW, ENDURACLAD EXTERIOR, NON-STANDARD SIZE
WINDOWS WITH FRAME EXPANDER (TRIMMED,
FIELD APPLIED, AND SEALED BY OTHERS)
CASING (FIELD APPLIED AD SEALED BY OTHERS),
COLOR -BLACK

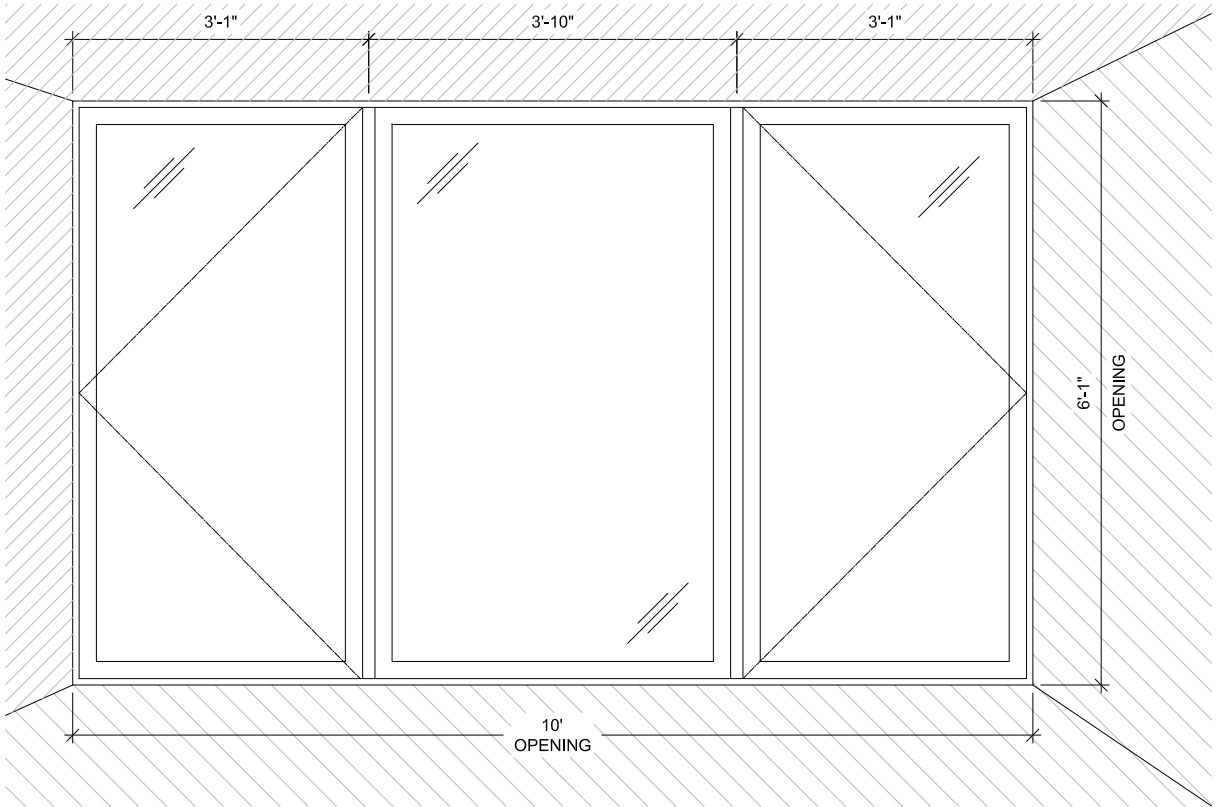
PROPOSED DOORS 'A' & 'B' SECTION



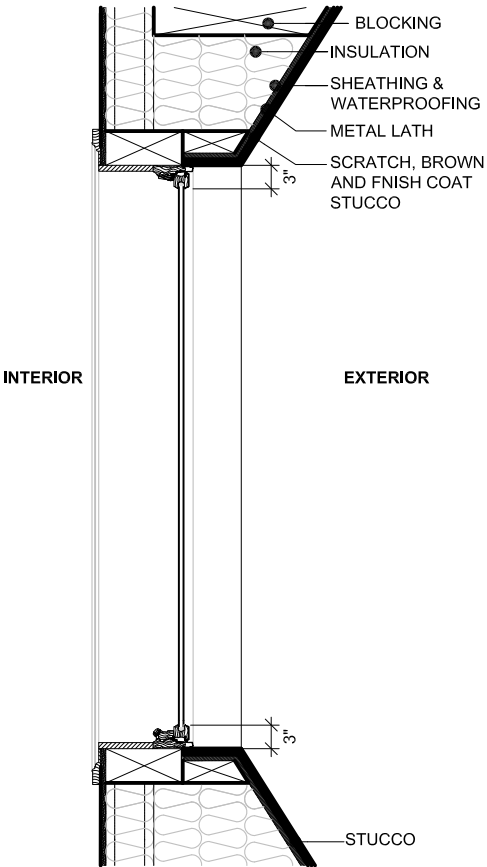
1 PROPOSED DOORS 'A' & 'B'
SCALE: 1/2"=1'-0"



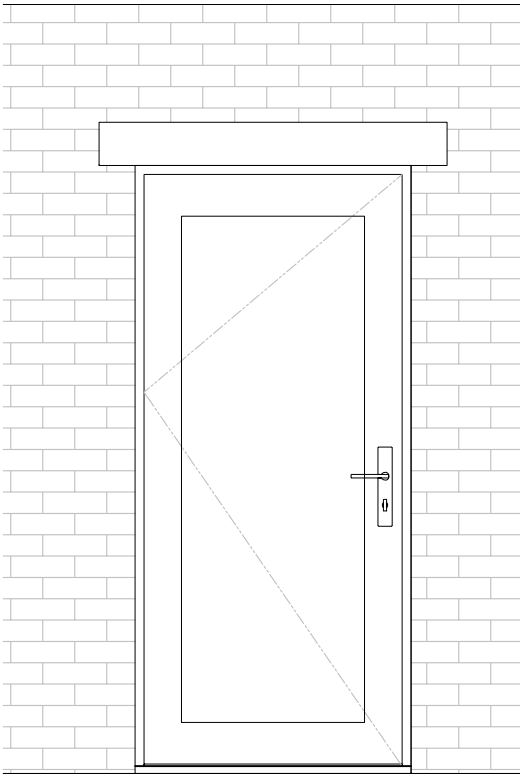
2 PROPOSED WINDOWS 'C'
SCALE: 1/2"=1'-0"



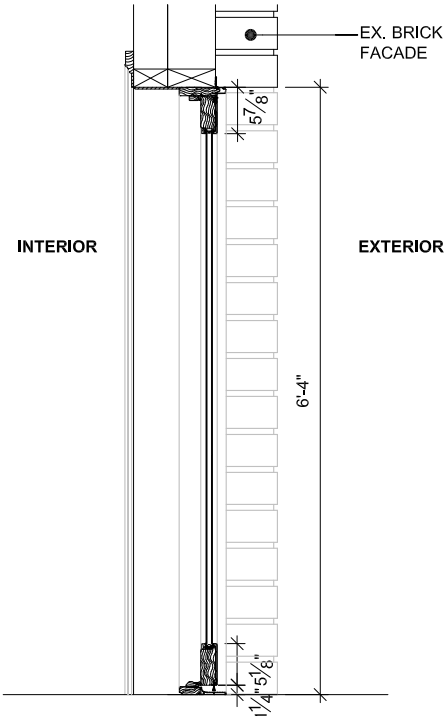
PROPOSED WINDOWS 'C' SECTION



3 PROPOSED DOOR 'D'
SCALE: 1/2"=1'-0"



PROPOSED DOOR 'D' SECTION



EAST 61ST STREET,
NEW YORK, NY



FRONT



REAR

313 W 77TH STREET,
NEW YORK, NY



FRONT

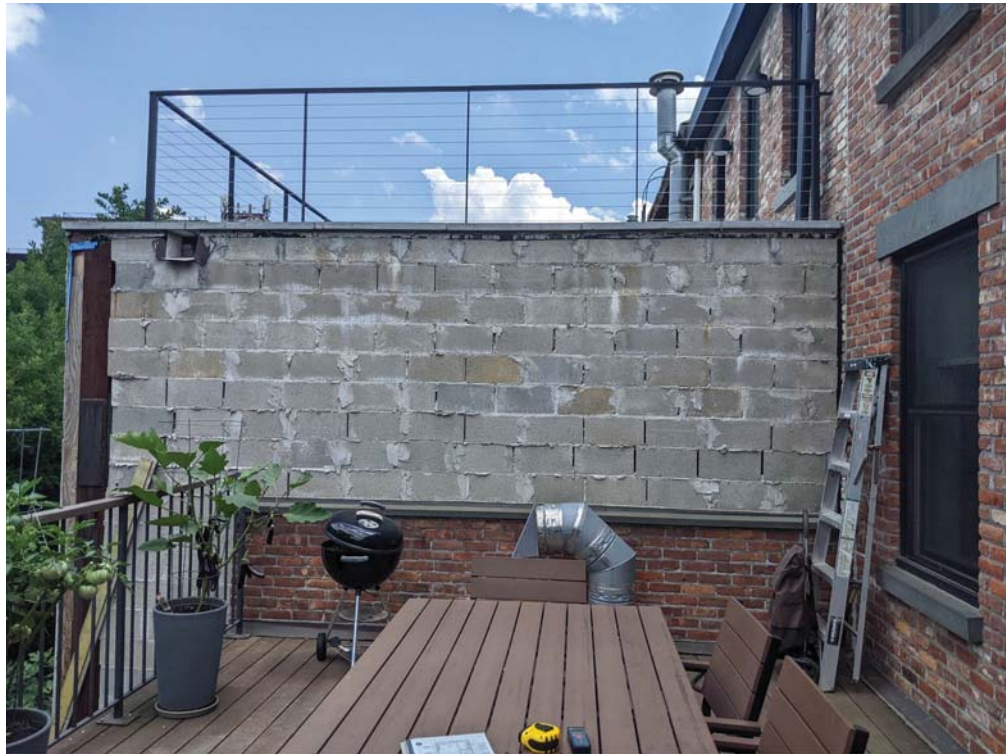


REAR

E8



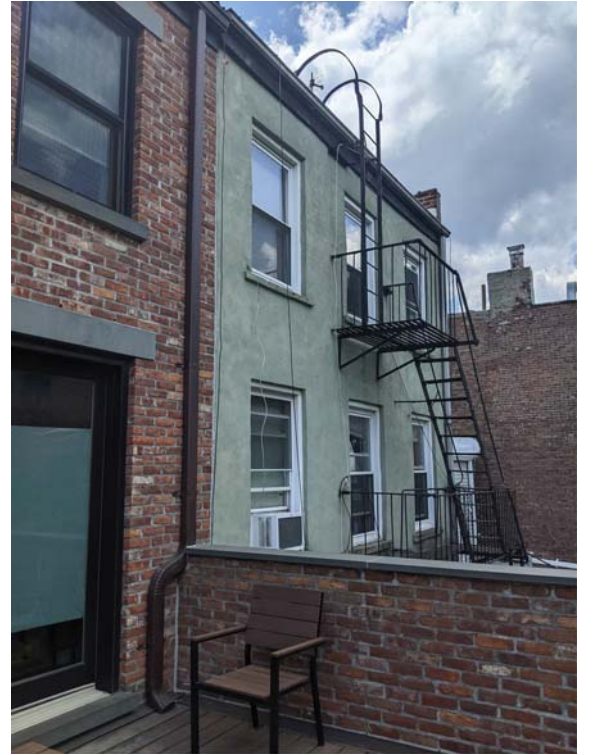
E7



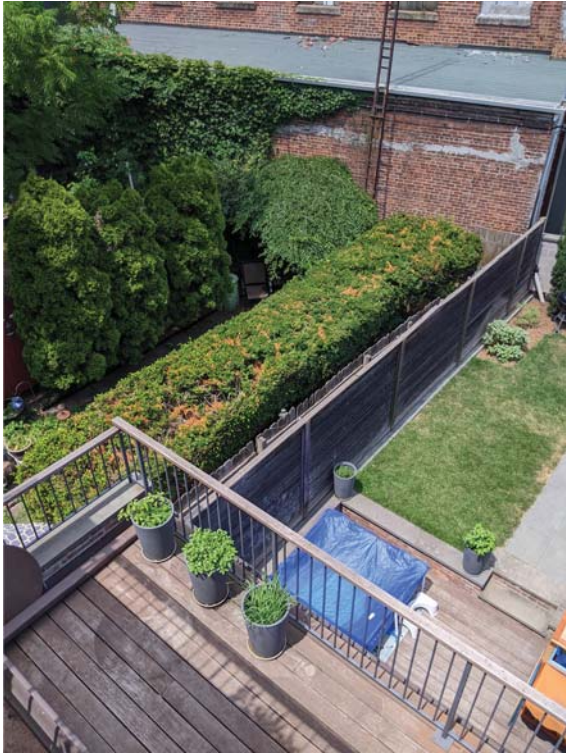
E6



E5



E4



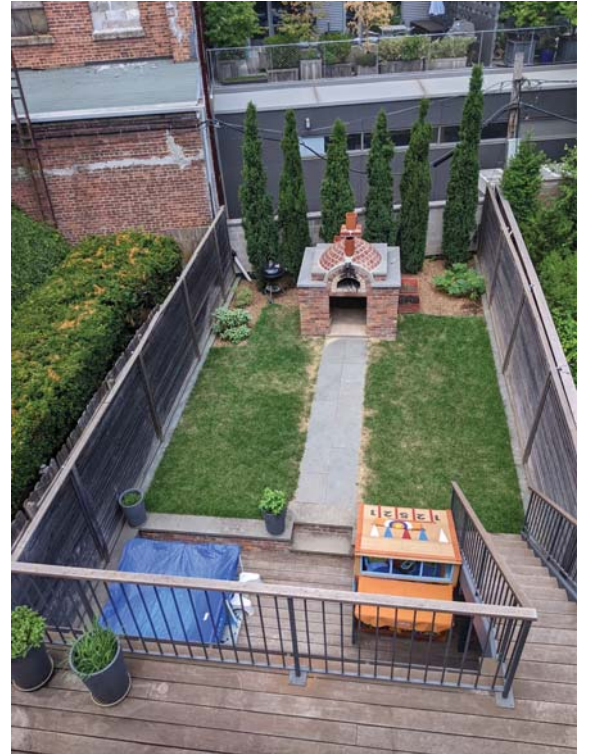
E3



E2



E1





④



③



②



①



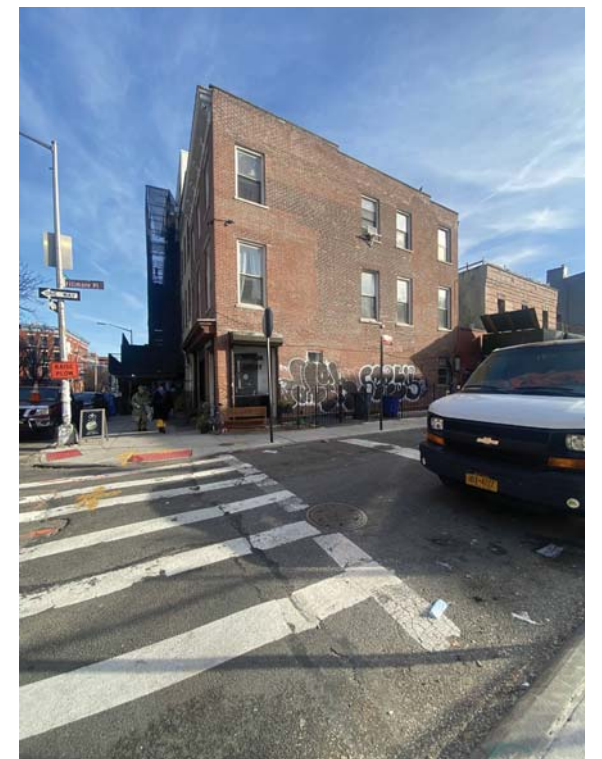
⑧



⑦



⑥



⑤



12



11



10



9



16



15



14



13



18



17

END OF PRESENTATION

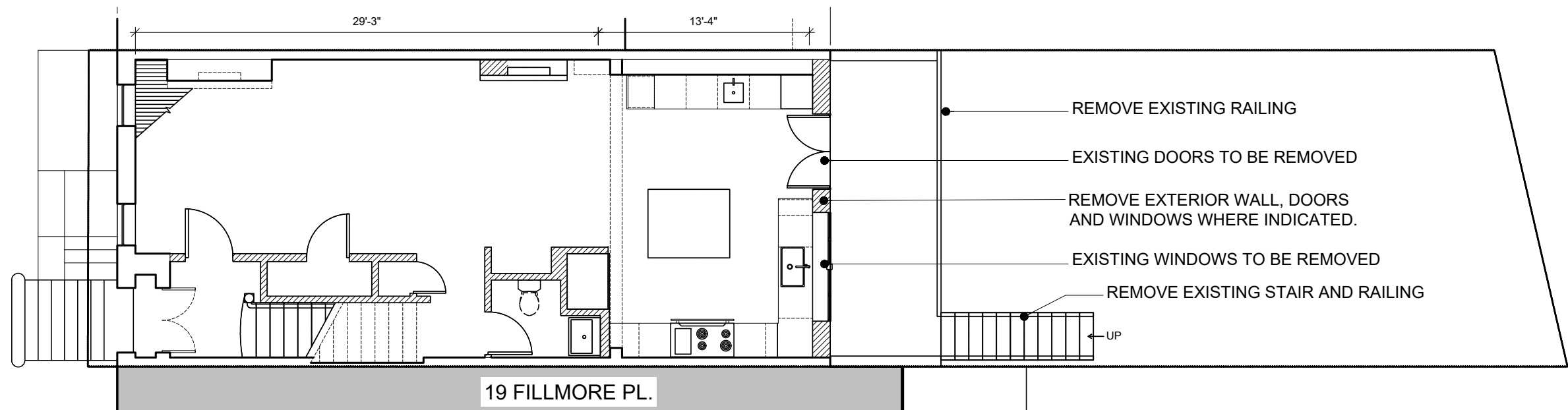
FOLLOWING ARE SUPPLEMENTAL
DOCUMENTS ONLY

The current proposal is:

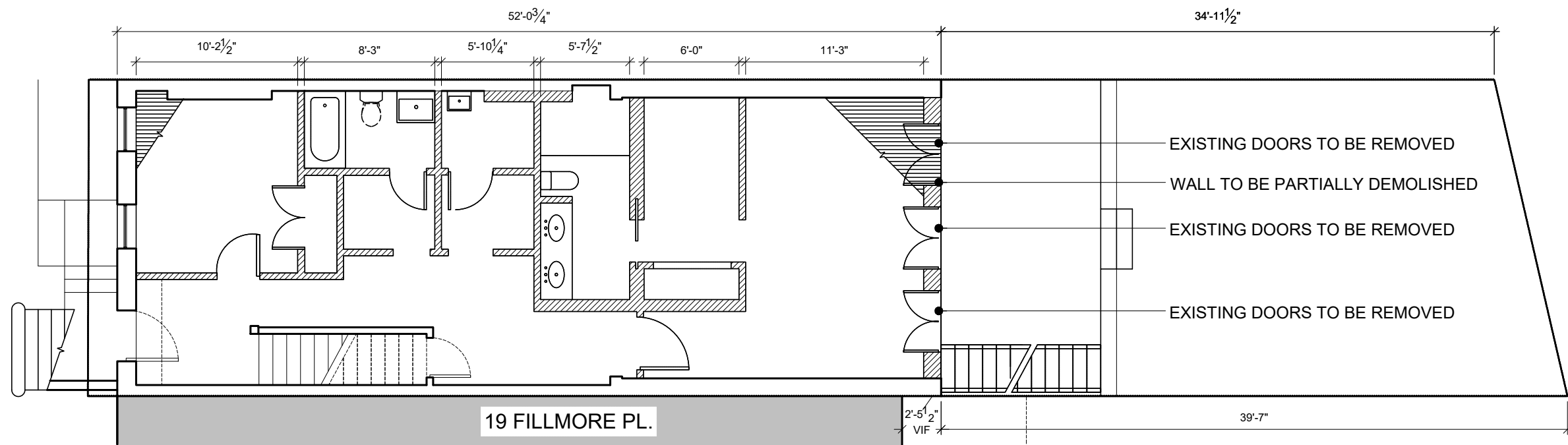
Preservation Department – Item 1, LPC-25-11799

**17 Fillmore Place – Fillmore Place Historic District
Borough of Brooklyn**

Note: this is a Public Meeting item. No public testimony will be received today as the hearing on this item is closed.



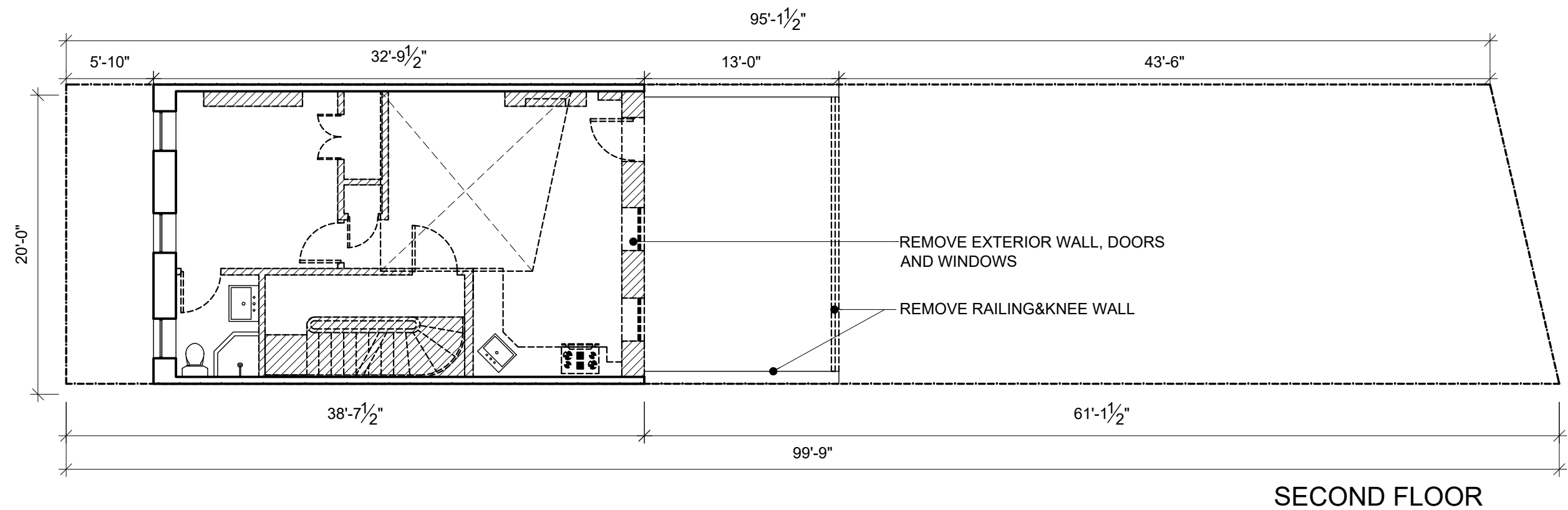
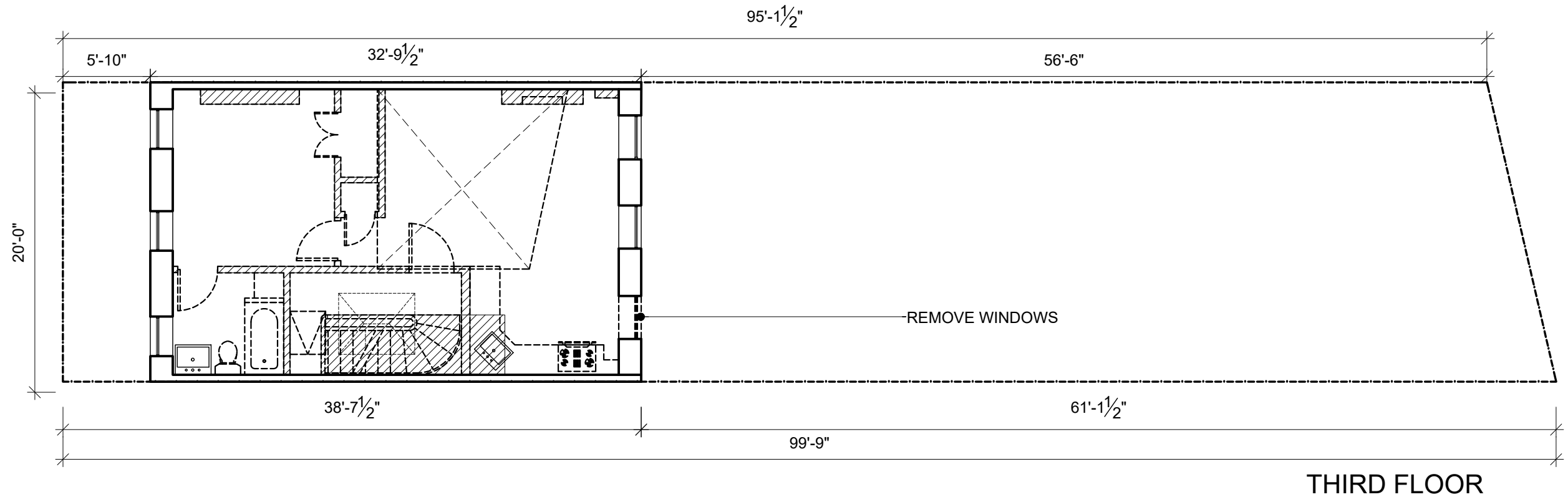
FIRST/PARLOR FLOOR



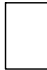

BASEMENT

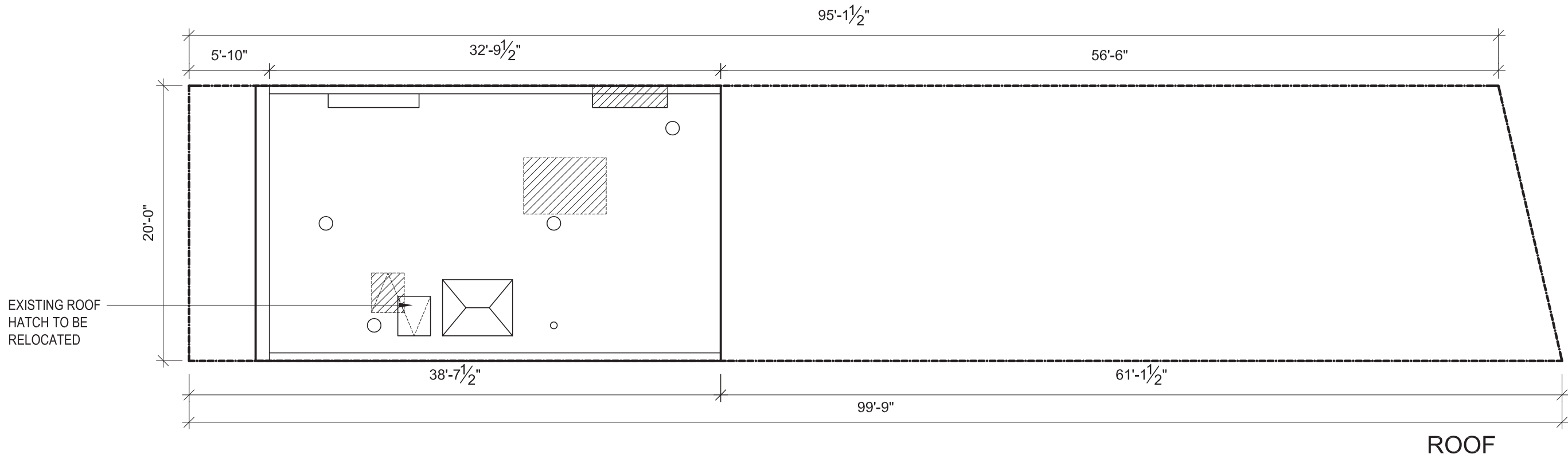
KEY

	EXISTING TO REMAIN
	PROPOSED EXSITING TO BE REMOVED



KEY

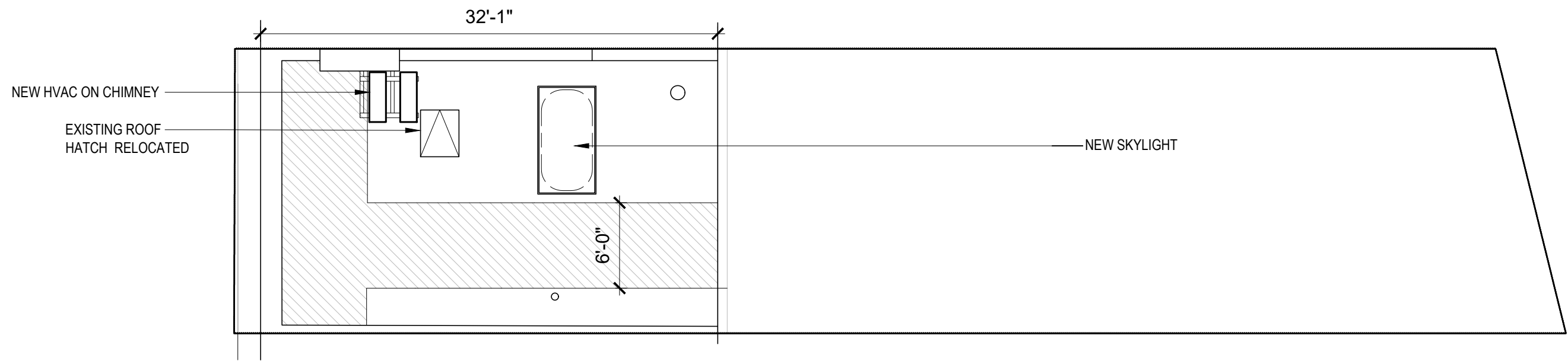
	EXISTING TO REMAIN
	PROPOSED EXSITING TO BE REMOVED



KEY

EXISTING TO REMAIN

PROPOSED EXSITING TO BE REMOVED



ROOF

The current proposal is:

Preservation Department – Item 1, LPC-25-11799

**17 Fillmore Place – Fillmore Place Historic District
Borough of Brooklyn**

Note: this is a Public Meeting item. No public testimony will be received today as the hearing on this item is closed.