

**May 20, 2025**  
Public Hearing

The current proposal is:

**Preservation Department – Item 4, LPC-25-06032**

## **Verdi Square – Scenic Landmark**

### **Borough of Manhattan**

**To testify virtually, please join Zoom**

**Webinar ID:** 161 839 5980

**Passcode:** 052350

By Phone: 646-828-7666 (NY)

833-435-1820 (Toll-free)

833-568-8864 (Toll-free)

**Note:** If you want to testify virtually on an item, join the Zoom webinar at the agenda's "Be Here by" time (about an hour in advance). When the Chair indicates it's time to testify, "raise your hand" via the Zoom app if you want to speak (\*9 on the phone). Those who signed up in advance will be called first.



**Parks**

# **VERDI SQUARE ACCESSIBLE PATH**

LPC Presentation

Designer: Cameron Engineering an IMEG Company

Date: May 20, 2025

Total Budget: 873K, City Council

# Goals

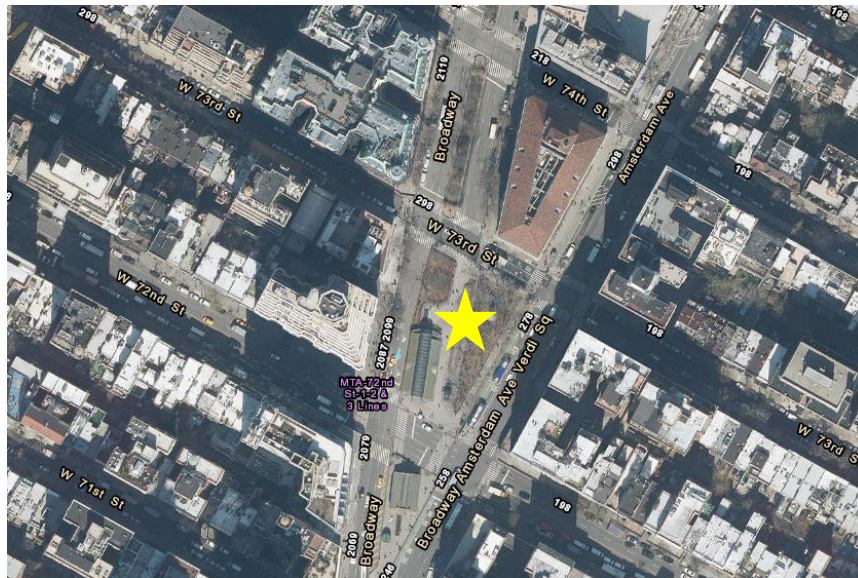
- Install a Diamond Grid path to provide an accessible route within the square.
- Provide water service and cross-connection controls.
- Install an RPZ (Reduced Pressure Zone) backflow device and a water meter in a vandal proof enclosure.
- Install two quick couplers at Verdi Square.







New York City NTS



Neighborhood of Upper West Side NTS



Site: Verdi Square NTS



## MG-123M Installation of Water Service Verdi Square | Project Location





#### LEGEND

EXISTING WATER MAIN



CONTRACT LIMIT LINE



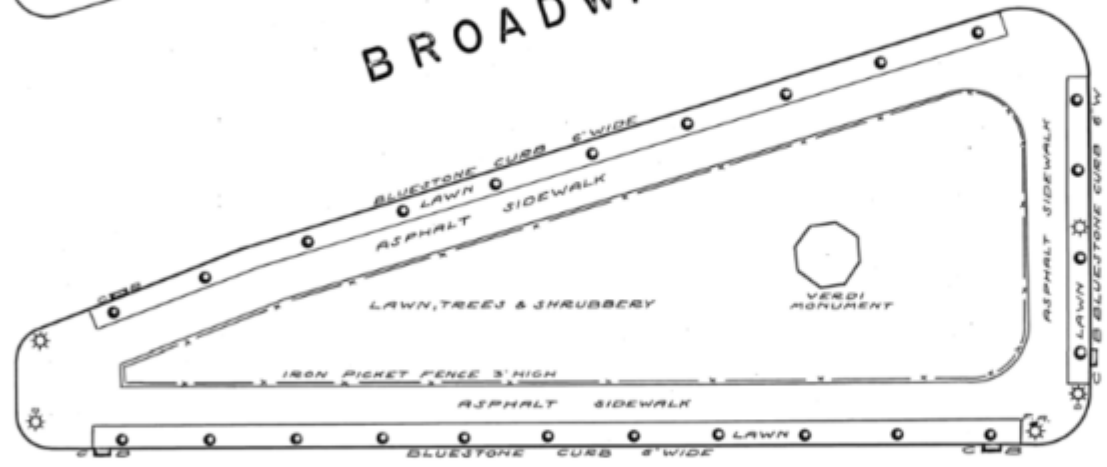
GRAPHIC SCALE



W. 72ND ST.

BROADWAY

W. 73RD ST.



AMSTERDAM AVE.

August 8, 1935



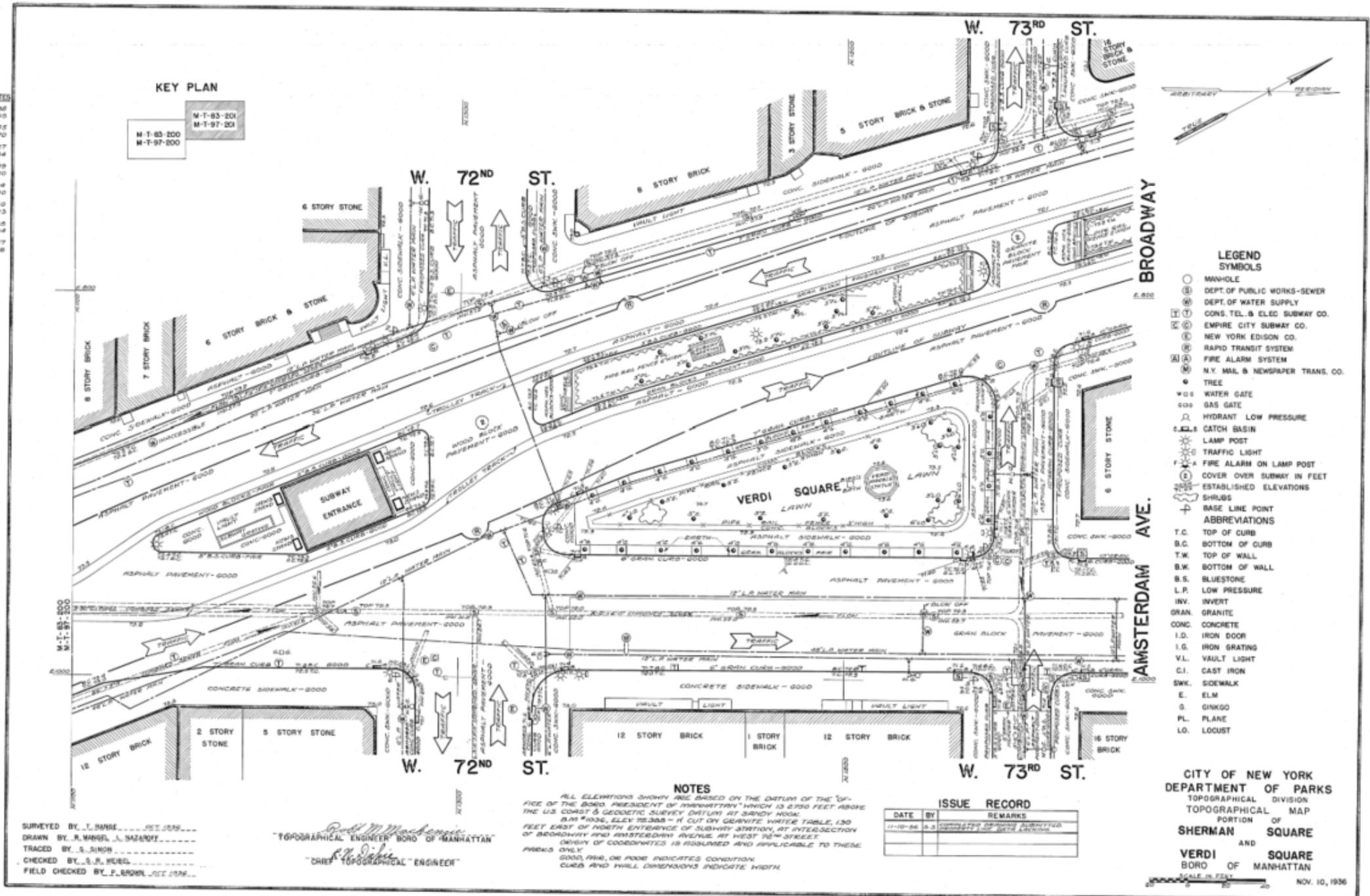
**MG-123M Installation of Water Service**  
**Verdi Square | Historical Mapping**



TABLE OF COORDINATES

TRAVERSE POINT	COORDINATES
1	N 1263.38 E 619.40
2	N 1348.45 E 795.70
3	N 1548.27 E 794.84
4	N 1567.39 E 1000.00
5	N 1568.14 E 1000.00
6	N 1572.69 E 890.23
7	N 1572.85 E 842.84
8	N 1550.87 E 821.68

KEY PLAN



- LEGEND SYMBOLS**
- MANHOLE
  - ⊕ DEPT. OF PUBLIC WORKS-SEWER
  - ⊕ DEPT. OF WATER SUPPLY
  - ⊕ CONS. TEL. & ELEC. SUBWAY CO.
  - ⊕ EMPIRE CITY SUBWAY CO.
  - ⊕ NEW YORK EDISON CO.
  - ⊕ RAPID TRANSIT SYSTEM
  - ⊕ FIRE ALARM SYSTEM
  - ⊕ N.Y. MAIL & NEWSPAPER TRANS. CO.
  - TREE
  - ⊕ WATER GATE
  - ⊕ GAS GATE
  - ⊕ HYDRANT LOW PRESSURE
  - ⊕ CATCH BASIN
  - ⊕ LAMP POST
  - ⊕ TRAFFIC LIGHT
  - ⊕ FIRE ALARM ON LAMP POST
  - ⊕ COVER OVER SUBWAY IN FEET
  - ⊕ ESTABLISHED ELEVATIONS
  - ⊕ SHRUBS
  - ⊕ BASE LINE POINT
- ABBREVIATIONS**
- T.C. TOP OF CURB
  - B.C. BOTTOM OF CURB
  - T.W. TOP OF WALL
  - B.W. BOTTOM OF WALL
  - B.S. BLUESTONE
  - L.P. LOW PRESSURE
  - INV. INVERT
  - GRAN. GRANITE
  - CONC. CONCRETE
  - I.D. IRON DOOR
  - I.G. IRON GRATING
  - V.L. VAULT LIGHT
  - C.I. CAST IRON
  - SWK. SIDEWALK
  - E. ELM
  - S. GINKGO
  - PL. PLANE
  - LO. LOCUST

**NOTES**

ALL ELEVATIONS SHOWN ARE BASED ON THE DATUM OF THE OFFICE OF THE BOARD PRESIDENT OF AMMANN & CO. WHICH IS 2.930 FEET ABOVE THE U.S. COAST & GEODETIC SURVEY DATUM OF 1929. B.M. #1036, ELEV. 72.305 - IS CUT ON GRANITE WATER TABLE, 130 FEET EAST OF NORTH ENTRANCE OF SUBWAY STATION, AT INTERSECTION OF BROADWAY AND AMSTERDAM AVENUE, AT WEST 72ND STREET. ORIGIN OF COORDINATES IS ASSUMED AND APPLICABLE TO THESE PLOTS ONLY.

GOOD, FAIR, OR POOR INDICATES CONDITION. CURB AND WALL DIMENSIONS INDICATE WIDTH.

**ISSUE RECORD**

DATE	BY	REMARKS
11-10-36	S.S.	SUBMITTED FOR REVIEW

SURVEYED BY J. HANSE  
DRAWN BY J. HANSE  
TRACED BY J. HANSE  
CHECKED BY J. HANSE  
FIELD CHECKED BY J. HANSE

*Robert M. Mackenzie*  
TOPOGRAPHICAL ENGINEER BORO OF MANHATTAN  
*R. J. J. J.*  
"CHIEF TOPOGRAPHICAL ENGINEER"

CITY OF NEW YORK  
DEPARTMENT OF PARKS  
TOPOGRAPHICAL DIVISION  
TOPOGRAPHICAL MAP  
PORTION OF  
**SHERMAN SQUARE**  
AND  
**VERDI SQUARE**  
BORO OF MANHATTAN  
SCALE IN FEET  
NOV. 10, 1936

M - T - 83 - 201  
M - T - 97 - 201

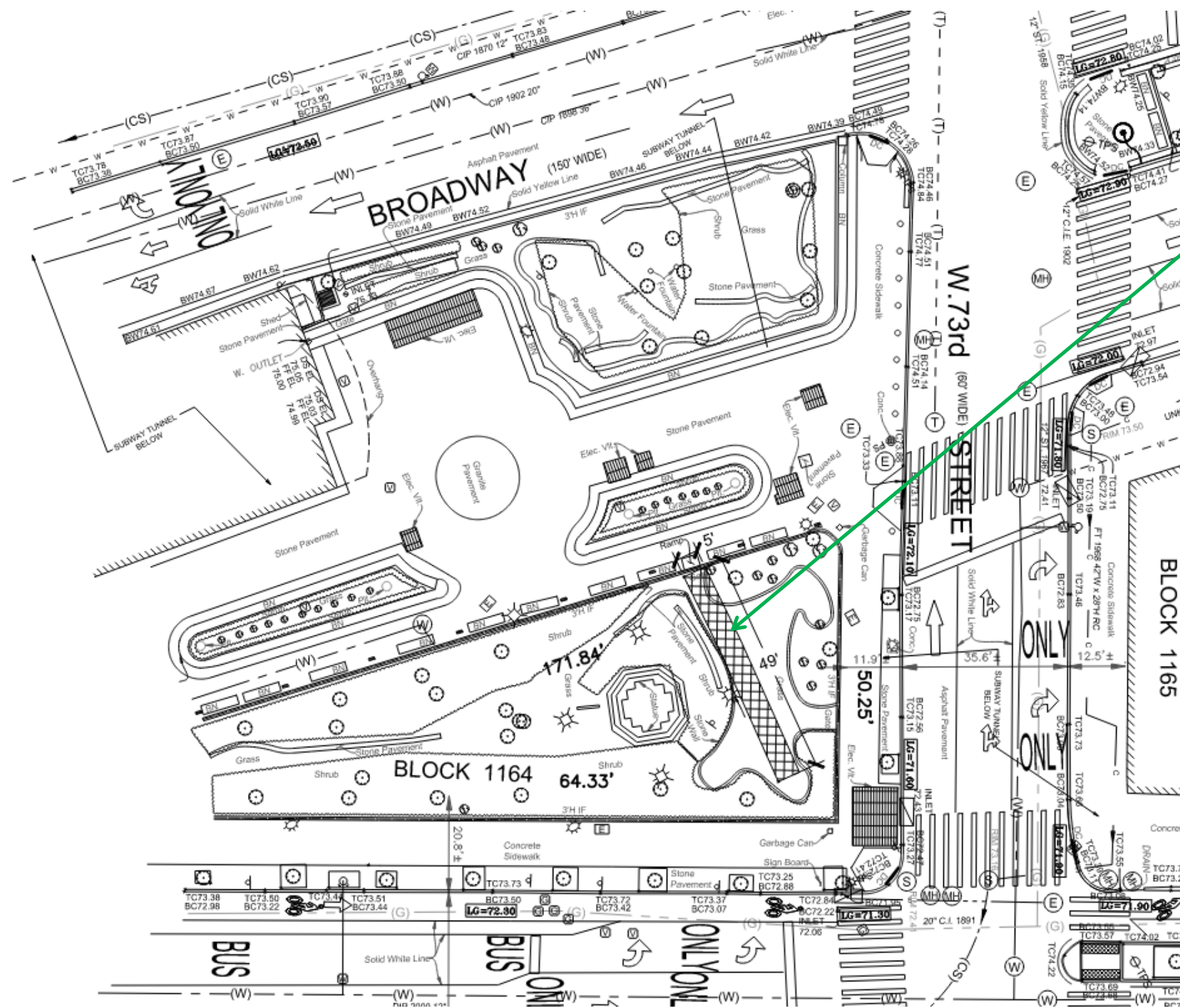
November 10, 1936



**MG-123M Installation of Water Service**  
**Verdi Square | Historical Mapping**



# MG-123M Installation of Water Service Verdi Square | Survey



Existing temporary access  
5' x 49' path





1 – Verdi Square – 1940s



2 – Verdi Square – 1980s



3 – Verdi Square – 2024



## MG-123M Installation of Water Service Verdi Square | Site Evolution

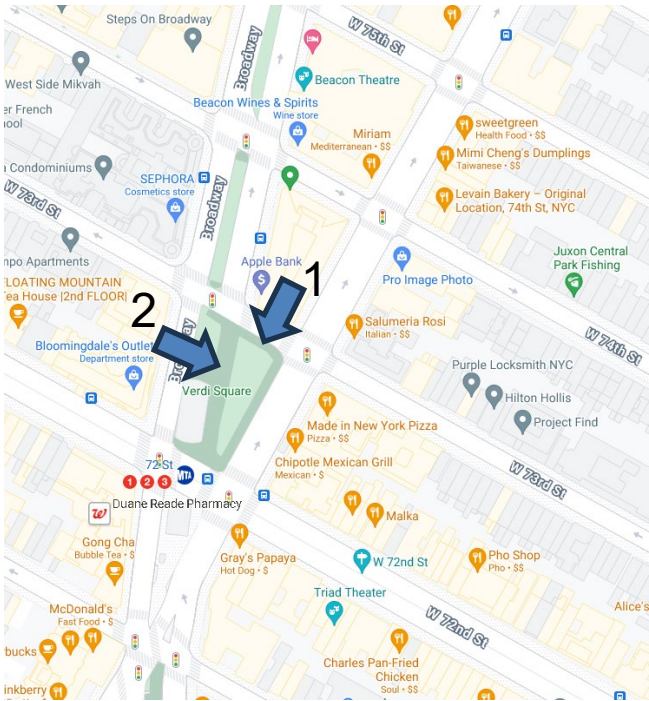




1 – W 73<sup>rd</sup> Street looking South



2 – Verdi Path looking East



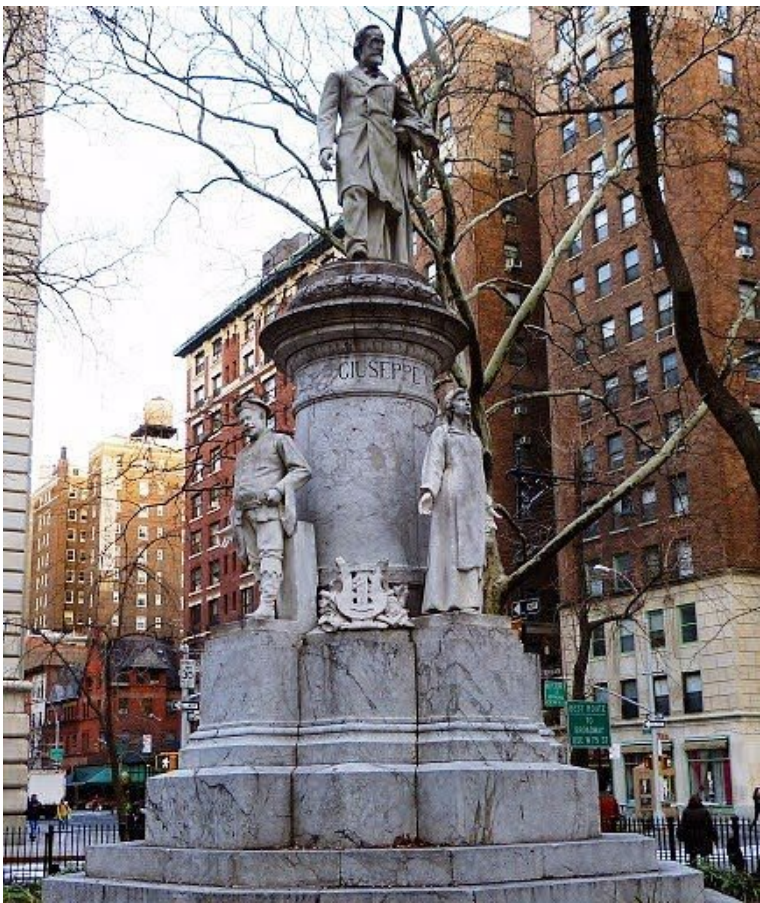
NYC Parks

# MG-123M Installation of Water Service Verdi Square | Existing Conditions

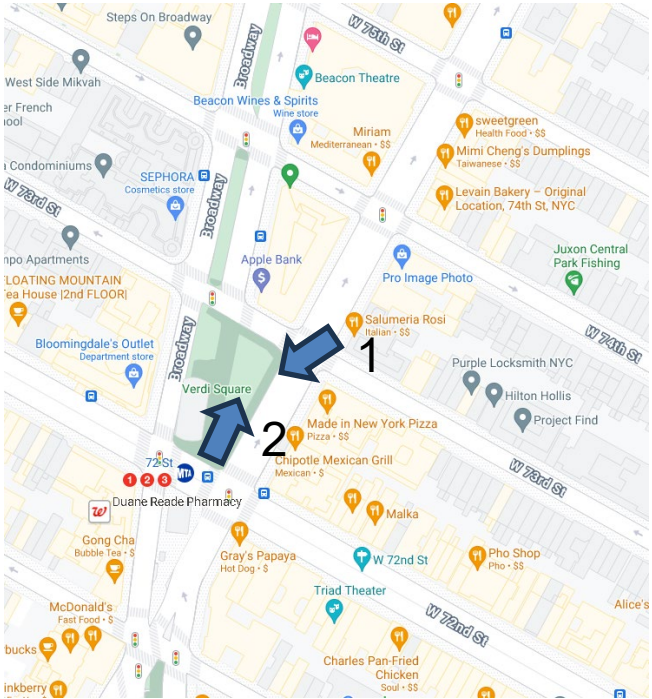




1 – Amsterdam Avenue looking South



2 – Giuseppe Verdi Monument



NYC Parks

# **MG-123M Installation of Water Service** **Verdi Square | Existing Conditions**



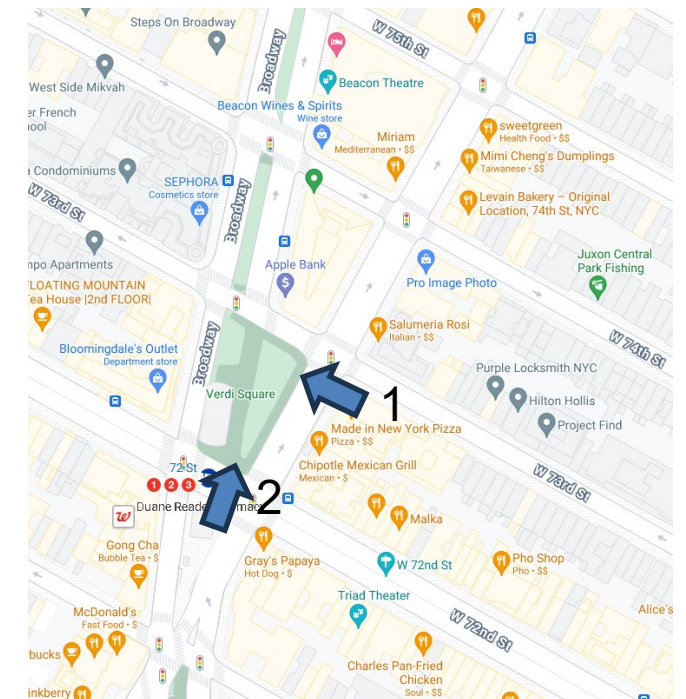




1 – Amsterdam Avenue looking West



2 – W 72<sup>nd</sup> Street looking North



## MG-123M Installation of Water Service Verdi Square | Existing Conditions

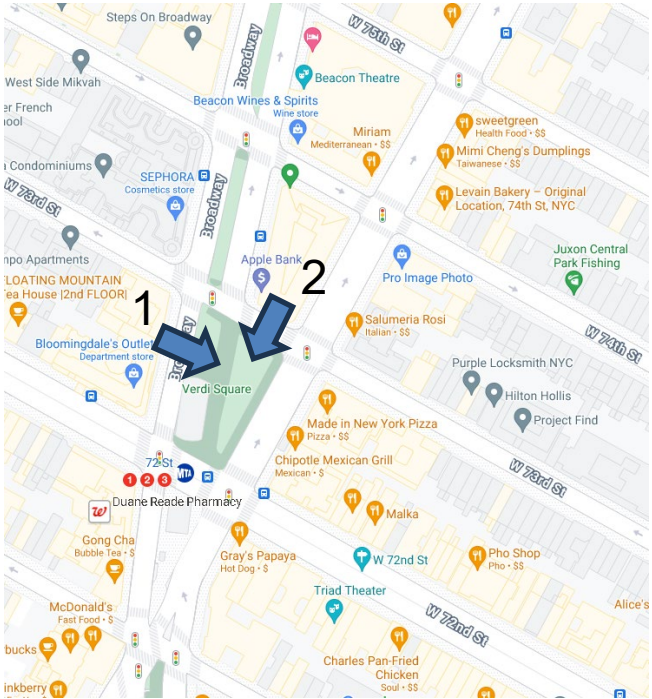




1 – Verdi Path looking East



2 – Verdi Path looking South



NYC Parks

# **MG-123M Installation of Water Service** **Verdi Square | Existing Conditions**







1 – W 73<sup>rd</sup> Street looking Southeast



2 – Verdi Path looking South



NYC Parks

# MG-123M Installation of Water Service Verdi Square | Existing Conditions



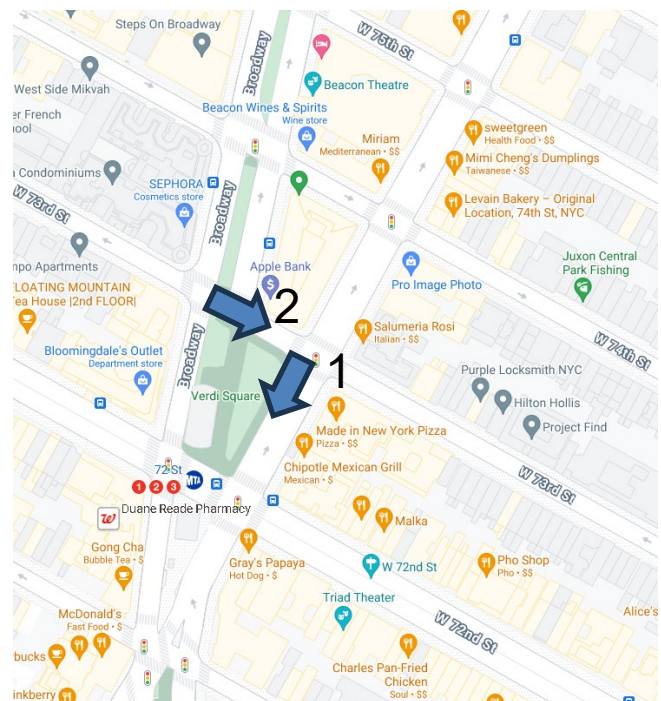




1 – Amsterdam Avenue looking South



2 – W 73rd Street looking East



# MG-123M Installation of Water Service Verdi Square | Existing Conditions

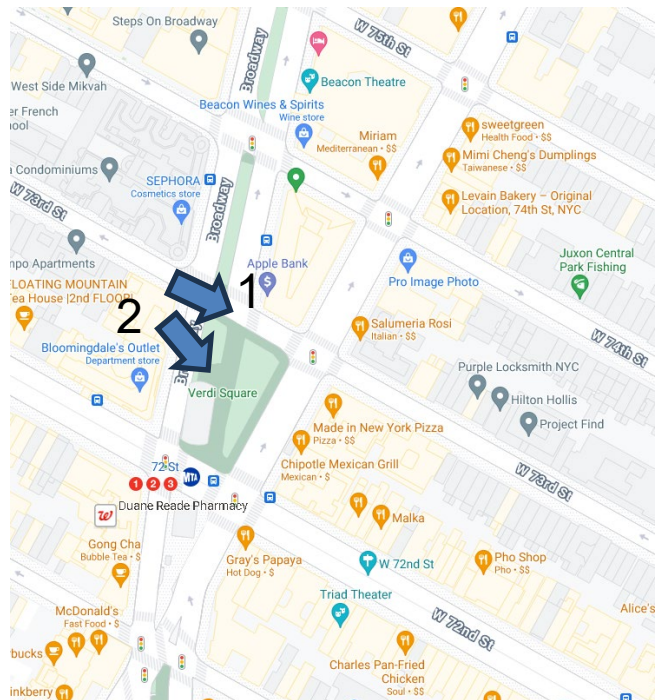




1 – W 73<sup>rd</sup> Street looking East



2 – W 73<sup>rd</sup> Street looking Southeast



NYC Parks

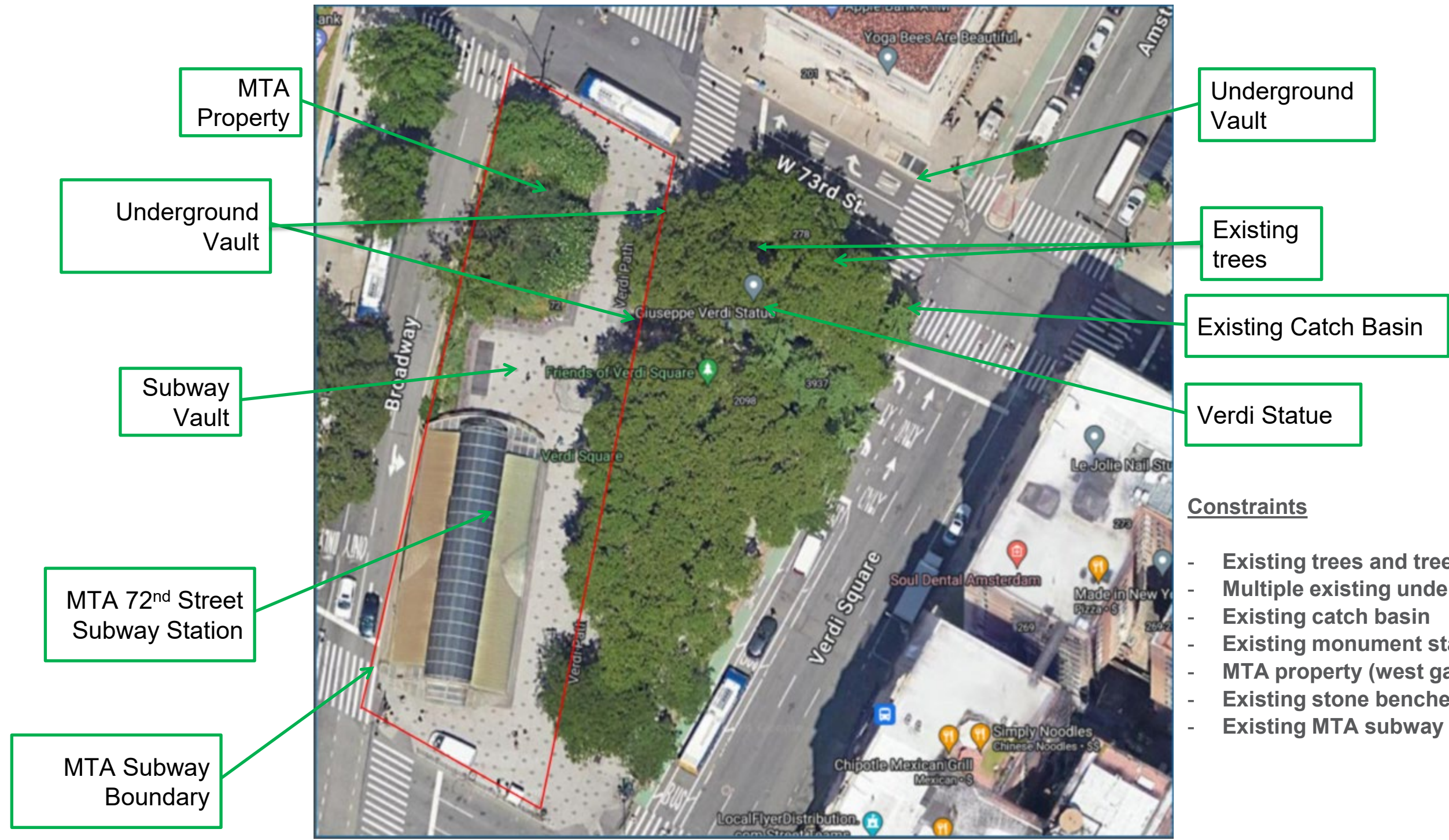
## MG-123M Installation of Water Service Verdi Square | Existing Conditions







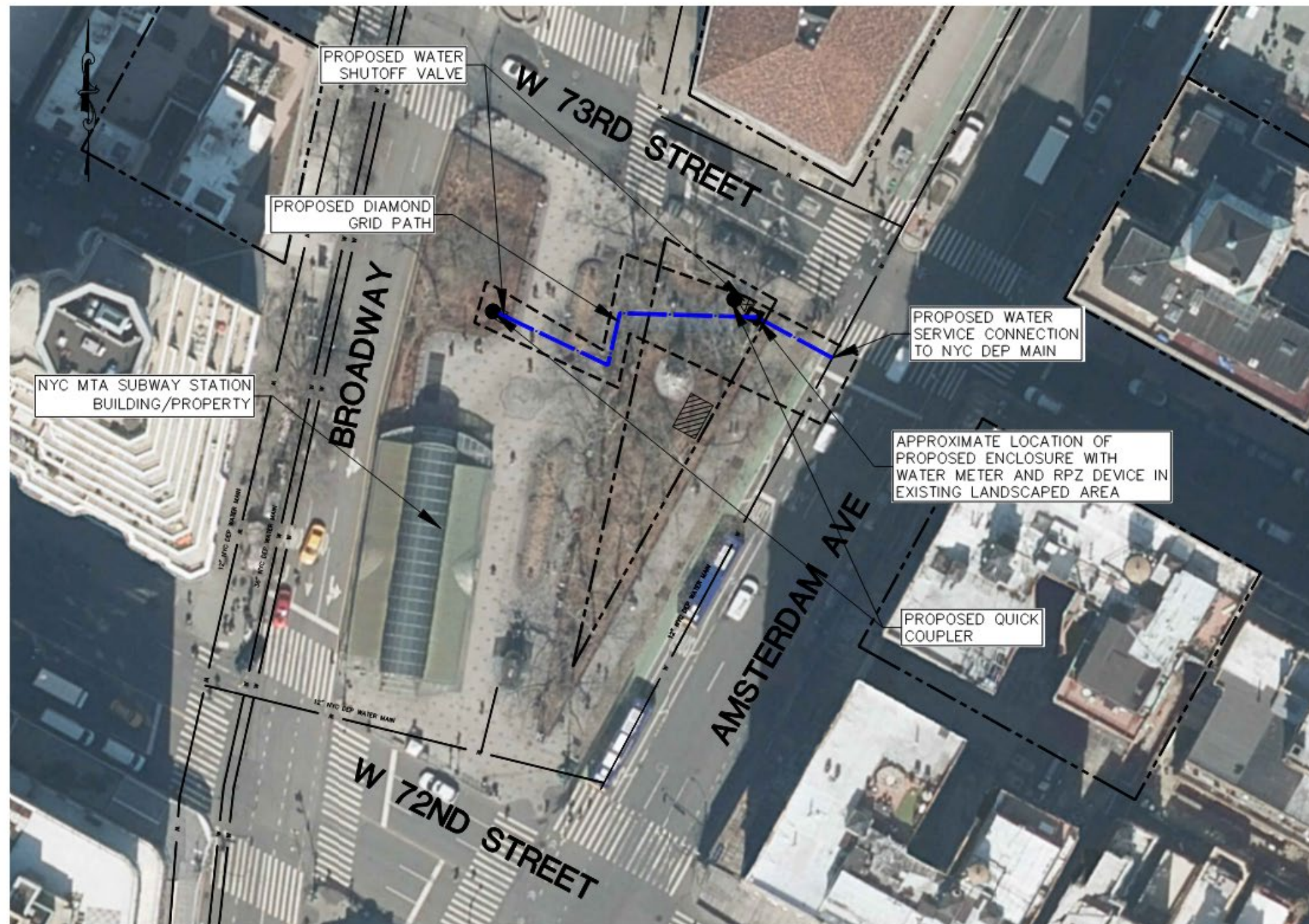
## MG-123M Installation of Water Service Verdi Square | RPZ and Enclosure Location



### Constraints

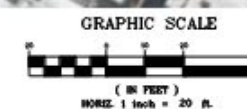
- Existing trees and tree roots
- Multiple existing underground vaults
- Existing catch basin
- Existing monument statue
- MTA property (west garden area)
- Existing stone benches
- Existing MTA subway





# LEGEND

EXISTING WATER MAIN	
CONTRACT LIMIT LINE	
PROPOSED UNDERGROUND WATER SERVICE	
PROPOSED QUICK COUPLER	
PROPOSED WATER SHUTOFF VALVE	



## MG-123M Installation of Water Service Verdi Square | Schematic Design





## NTS

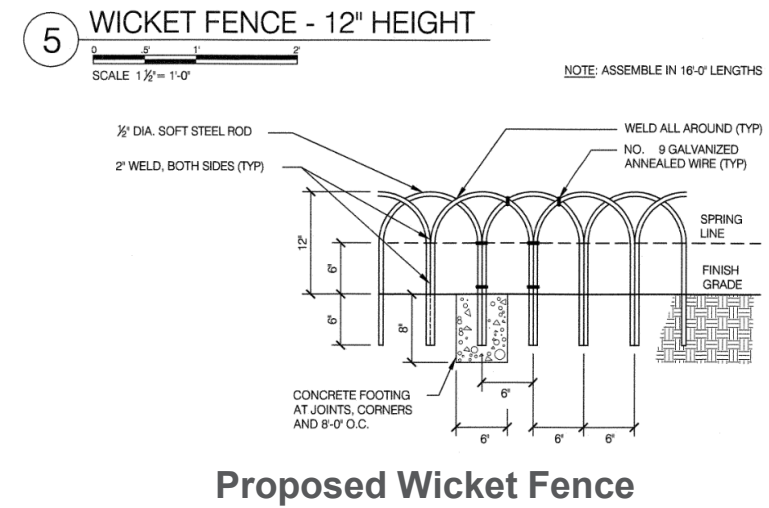




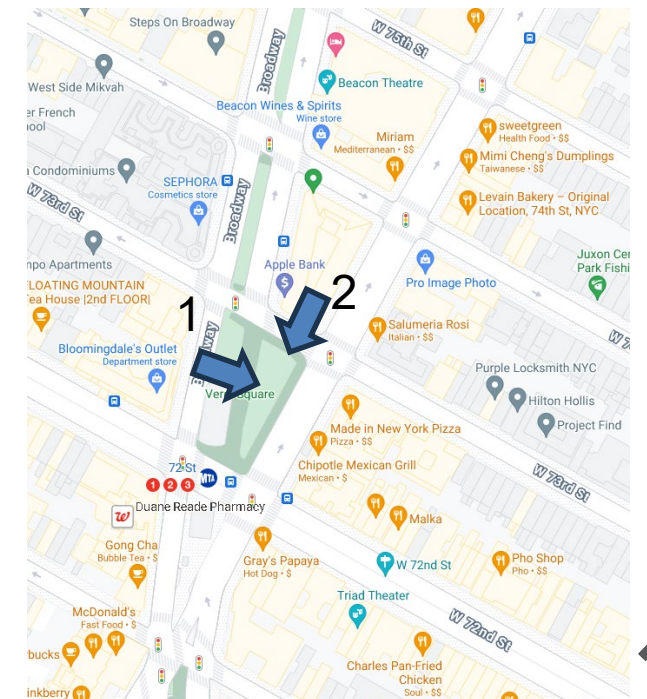
1 - Verdi Path looking West



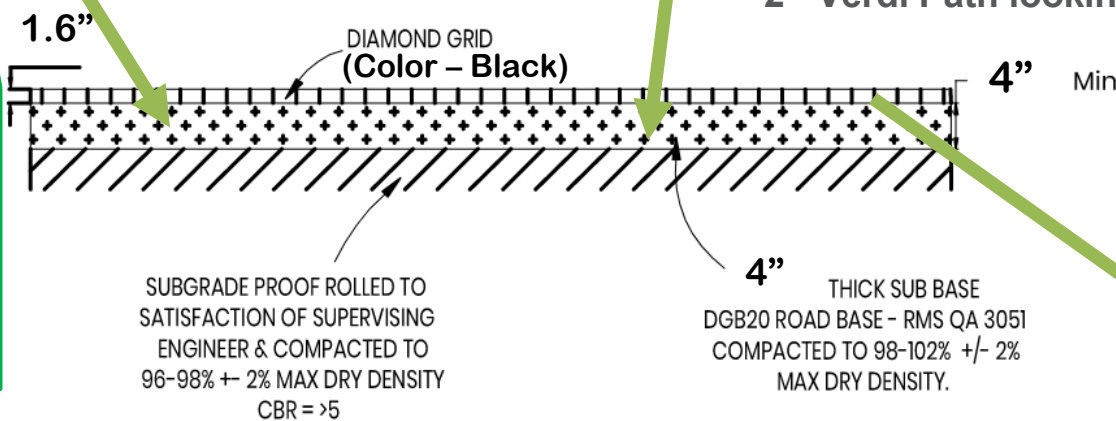
2 - Verdi Path looking South



APPROXIMATE LOCATION OF PROPOSED RPZ ENCLOSURE (38" HIGH X 46" WIDE)



CUT AND SINK EXISTING CURB AT ENTRANCES FLUSH WITH SIDEWALK



Proposed Diamond Grid filled w/ gravel - Path Profile - 5.5" depth



## MG-123M Installation of Water Service Verdi Square | Proposed Conditions

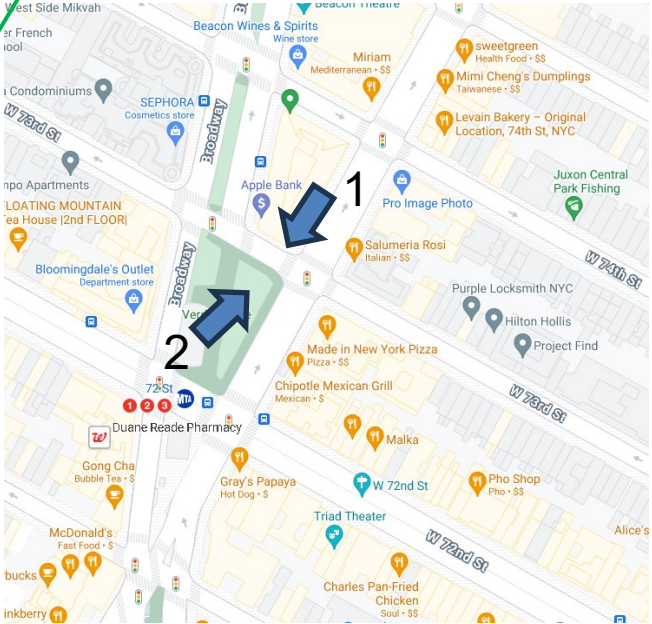




1 - Verdi Square looking South



2 - Verdi Square looking North



APPROXIMATE LOCATION OF  
PROPOSED RPZ ENCLOSURE  
(38" HIGH X 46" WIDE)



NYC Parks

**MG-123M Installation of Water Service**  
**Verdi Square | Proposed Conditions**





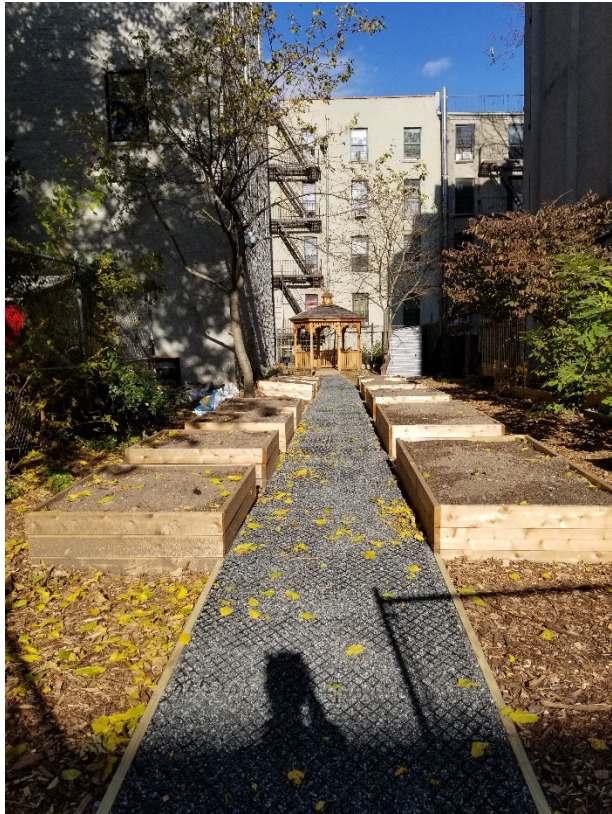
Garden of Resilience, Queens



NYC Community Path Project



NYC Community Path Project



Jackie Robinson Community Garden



**MG-123M Installation of Water Service**  
**Verdi Square | Diamond Gird Examples**





1 – Bryant Park



2 – Jackson Square



## MG-123M Installation of Water Service Verdi Square | Precedents





1 – Madison Square Park



2 – Greeley Square Park



NYC Parks

**MG-123M Installation of Water Service**  
**Verdi Square | Precedents**





1 – Madison Square Park



2 – Greeley Square Park







**May 20, 2025**  
Public Hearing

The current proposal is:

**Preservation Department – Item 4, LPC-25-06032**

## **Verdi Square – Scenic Landmark**

### **Borough of Manhattan**

**To testify virtually, please join Zoom**

**Webinar ID:** 161 839 5980

**Passcode:** 052350

By Phone: 646-828-7666 (NY)

833-435-1820 (Toll-free)

833-568-8864 (Toll-free)

**Note:** If you want to testify virtually on an item, join the Zoom webinar at the agenda's "Be Here by" time (about an hour in advance). When the Chair indicates it's time to testify, "raise your hand" via the Zoom app if you want to speak (\*9 on the phone). Those who signed up in advance will be called first.





Parks

## APPENDIX





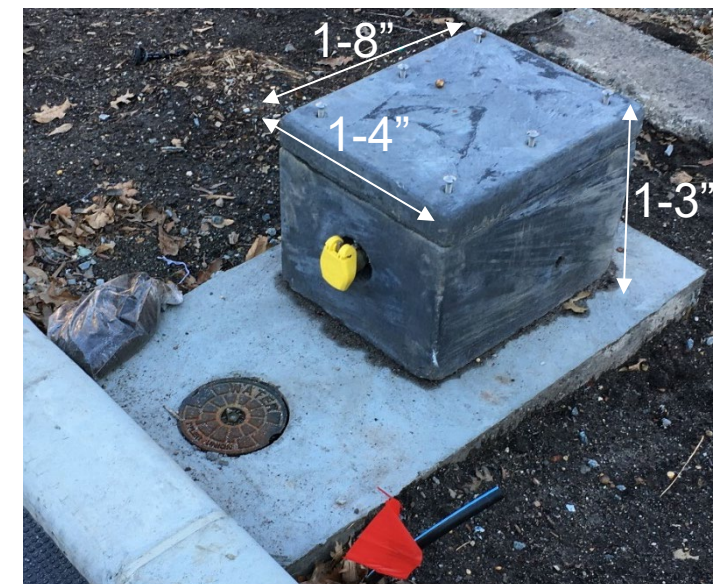
Aluminum Enclosure

#### Aluminum

- Safe-T-Cover Model no. 200SN-AL (46" x 19")
- Color – Black

#### Benefits:

- Vandal Proof: permanent anchor to concrete pad
- Vandal Proof: durable material
- Vandal Proof: add enhanced locking mechanism
- No underground vault:
  - shallow excavation
  - underground drain not needed
  - leak detection alarm inside vault not needed



Quick Coupler

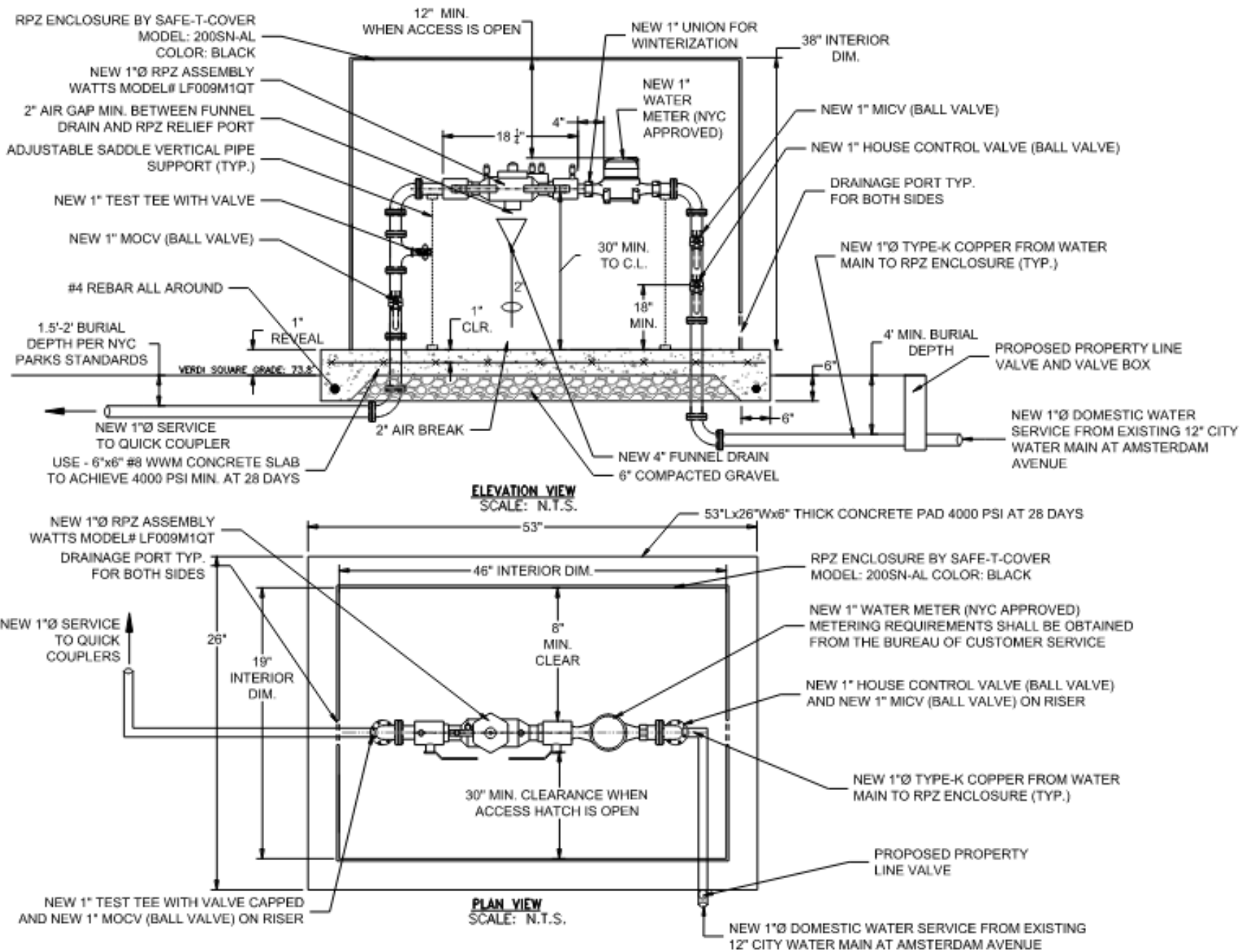
RPZ Enclosure with RPZ and Water Meter – Aluminum RPZ Enclosure



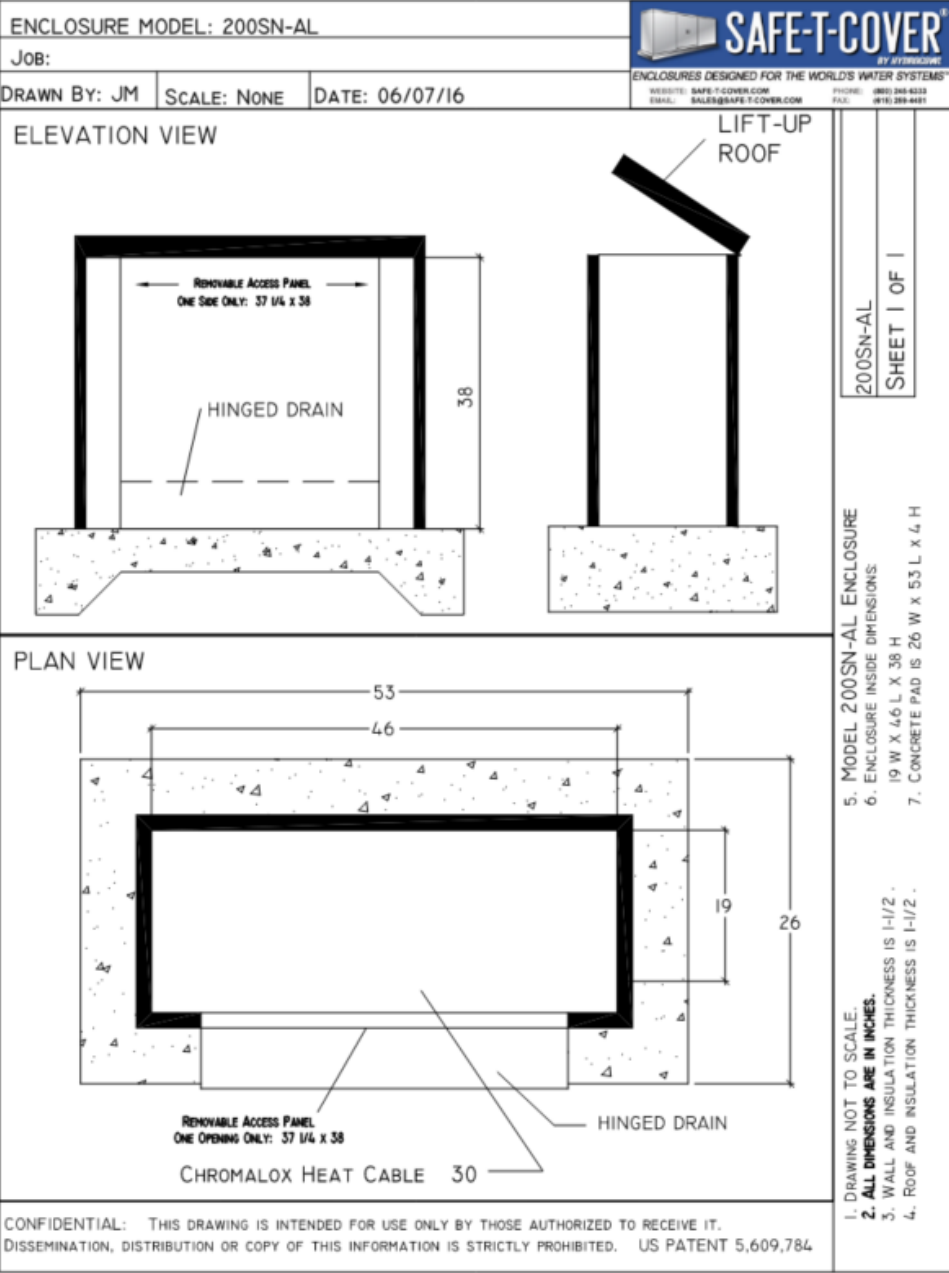
## MG-123M Installation of Water Service

Verdi Square | RPZ Enclosure with RPZ and Water Meter / Quick Coupler





RPZ Enclosure with RPZ and Water Meter – Aluminum RPZ Enclosure



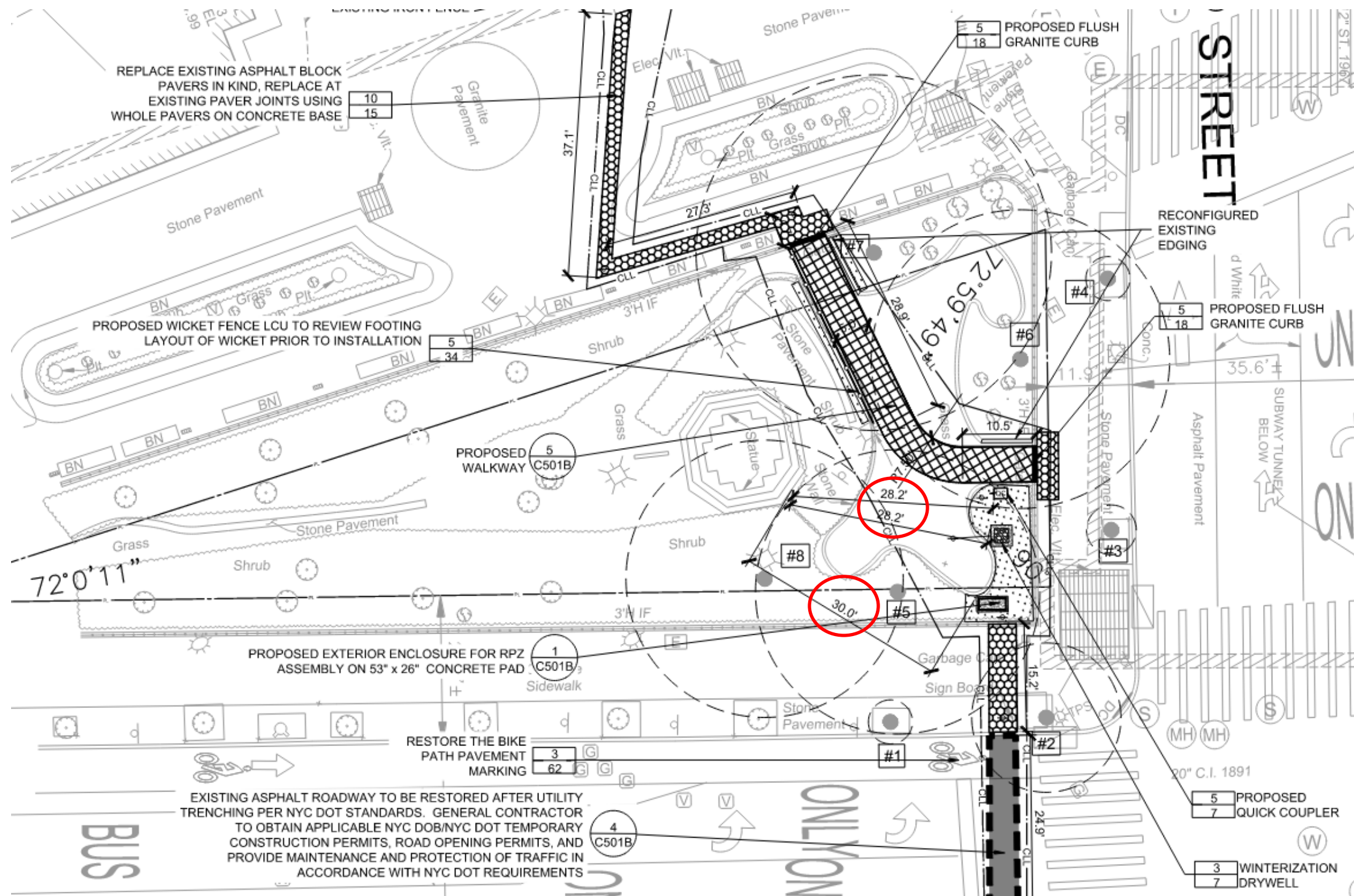
Safe-T-Cover Model no. 200SN-AL



NYC Parks

# MG-123M Installation of Water Service Verdi Square | RPZ Enclosure





## MG-123M Installation of Water Service

### Verdi Square | Proposed Site Plan





Otto Luyken- Cherry Laurel



**May 20, 2025**  
Public Hearing

The current proposal is:

**Preservation Department – Item 4, LPC-25-06032**

## **Verdi Square – Scenic Landmark**

### **Borough of Manhattan**

**To testify virtually, please join Zoom**

**Webinar ID:** 161 839 5980

**Passcode:** 052350

By Phone: 646-828-7666 (NY)

833-435-1820 (Toll-free)

833-568-8864 (Toll-free)

**Note:** If you want to testify virtually on an item, join the Zoom webinar at the agenda's "Be Here by" time (about an hour in advance). When the Chair indicates it's time to testify, "raise your hand" via the Zoom app if you want to speak (\*9 on the phone). Those who signed up in advance will be called first.