

May 20, 2025  
Public Hearing

The current proposal is:

Preservation Department – Item 3, LPC-25-08741

## **16 East 16th Street – Ladies' Mile Historic District Borough of Manhattan**

**To testify virtually, please join Zoom**

**Webinar ID:** 161 839 5980

**Passcode:** 052350

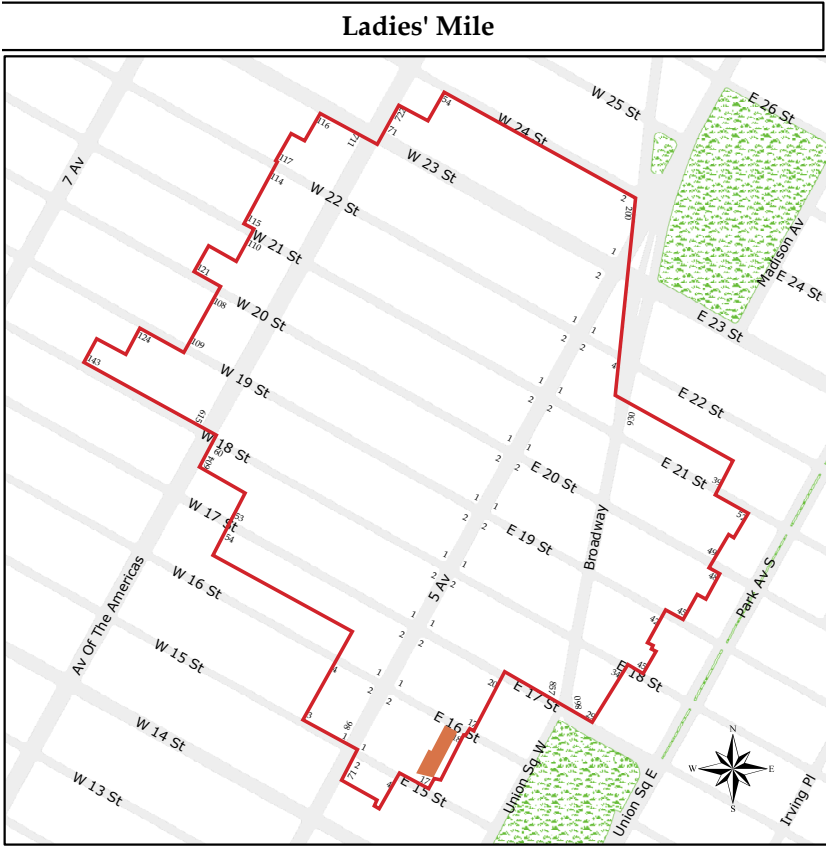
By Phone: 646-828-7666 (NY)

833-435-1820 (Toll-free)

833-568-8864 (Toll-free)

**Note:** If you want to testify virtually on an item, join the Zoom webinar at the agenda's "Be Here by" time (about an hour in advance). When the Chair indicates it's time to testify, "raise your hand" via the Zoom app if you want to speak (\*9 on the phone). Those who signed up in advance will be called first.





Ladies' Mile Historic District  
Manhattan  
Designated May 2, 1989

Historic District Boundaries



**HISTORIC DISTRICT MAP**  
SOURCE: NYC LPC  
LADIES' MILE HISTORIC DISTRICT



**PREVIOUSLY APPROVED FACADE**



**AS-BUILT FACADE**



**APPROVED CANOPY AT HOTEL ENTRANCE**

# PROJECT LOCATION AND STREET FACADE WITH APPROVED SINGLE CANOPY

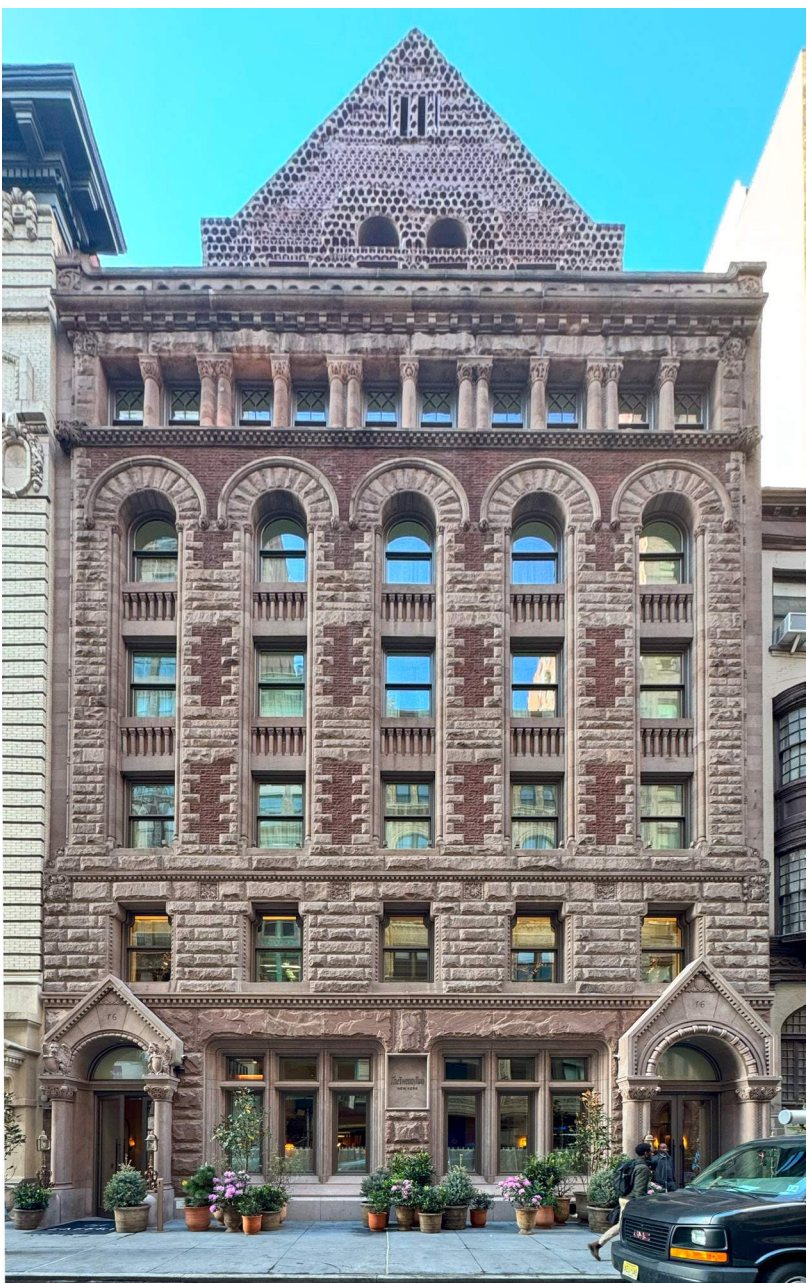




HISTORIC GROUND FLOOR



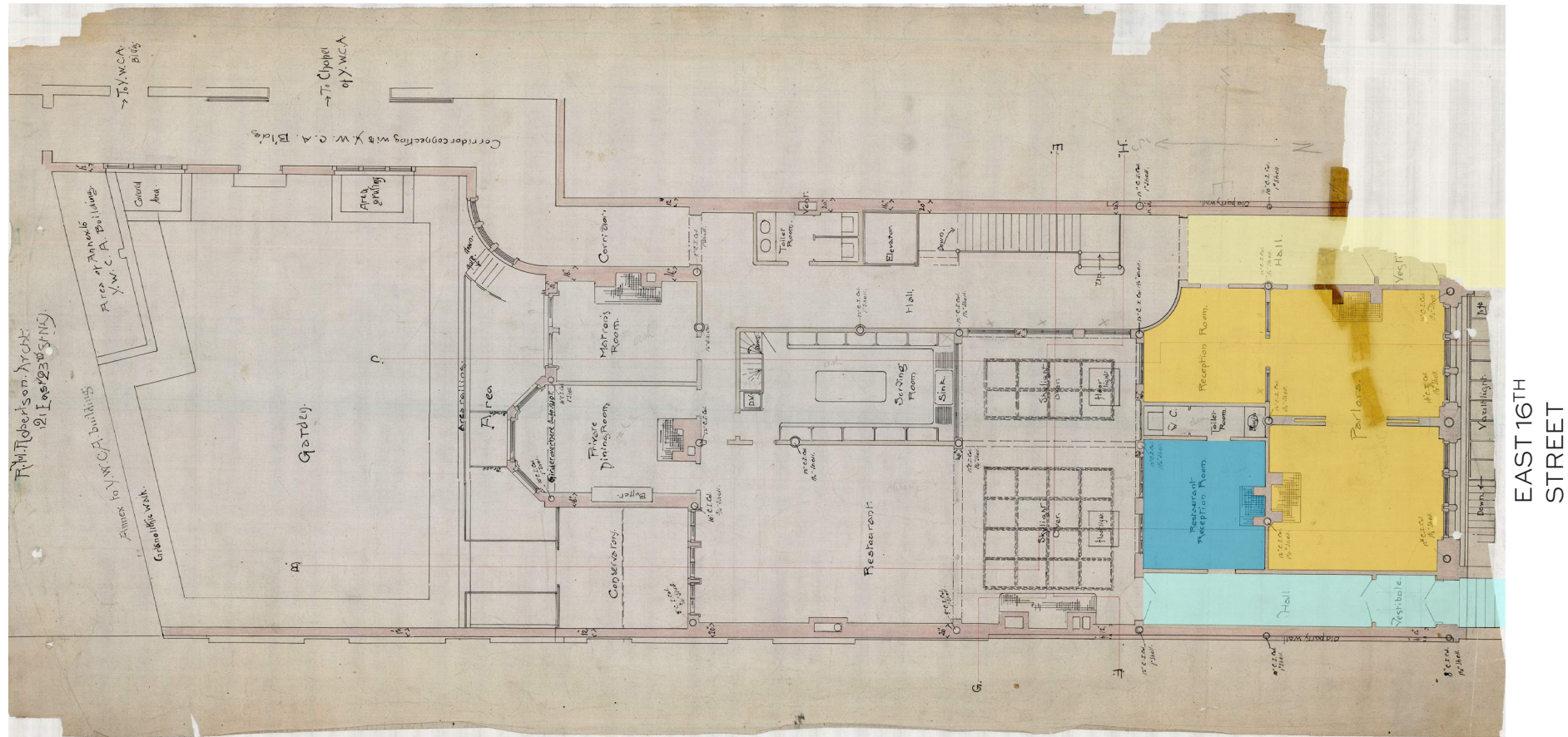
2019 GROUND FLOOR



CURRENT RESTORED GROUND FLOOR

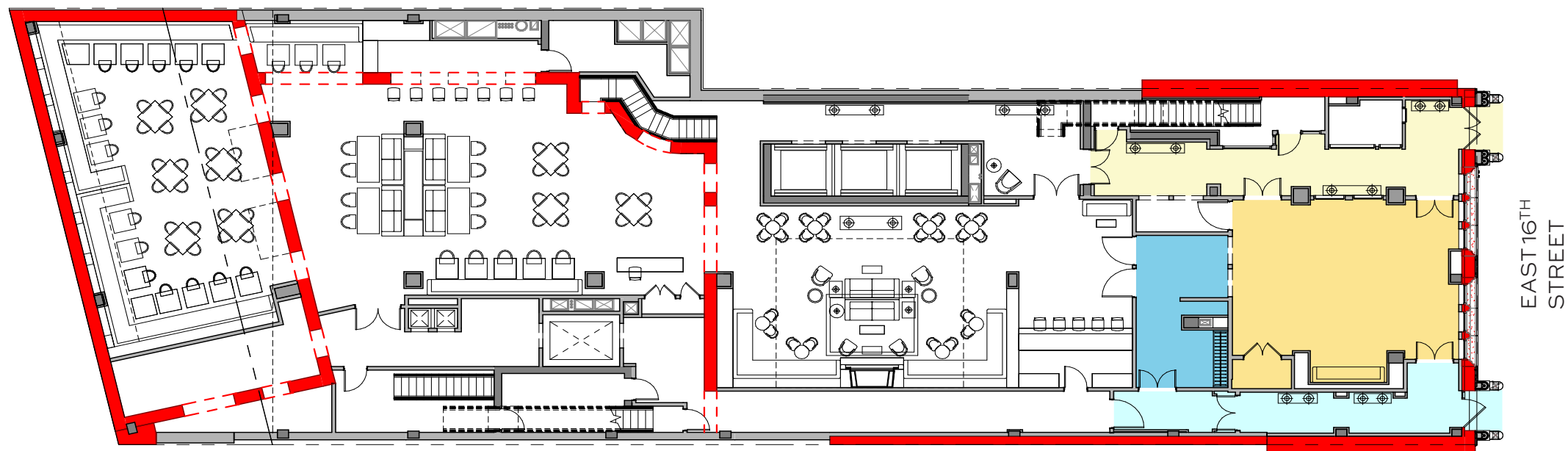
# FACADE/GROUND FLOOR ELEVATIONS





**HISTORIC GROUND FLOOR PLAN**

- YWCA ENTRANCE
- YWCA RECEPTION
- RESTAURANT ENTRANCE
- RESTAURANT RECEPTION



**CURRENT RESTORED GROUND FLOOR PLAN**

- HOTEL ENTRANCE
- HOTEL RECEPTION
- RESTAURANT ENTRANCE
- RESTAURANT RECEPTION

## GROUND FLOOR PLANS





APPROVED CANOPY AT HOTEL ENTRANCE



CURRENTLY PROPOSED SECOND CANOPY AT RESTAURANT ENTRANCE (SHOWING UPDATED PROPOSED COLOR FOR BOTH CANOPIES)



RESTAURANT ENTRANCE

HOTEL ENTRANCE

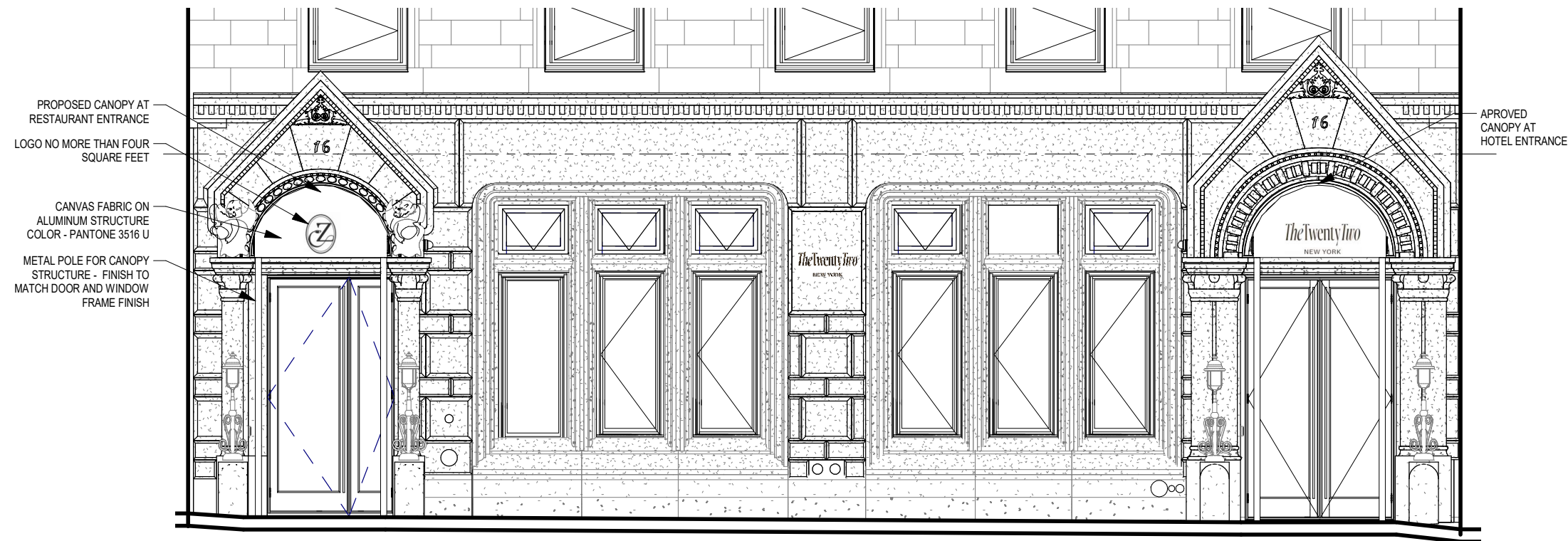


Burgundy (WC815)

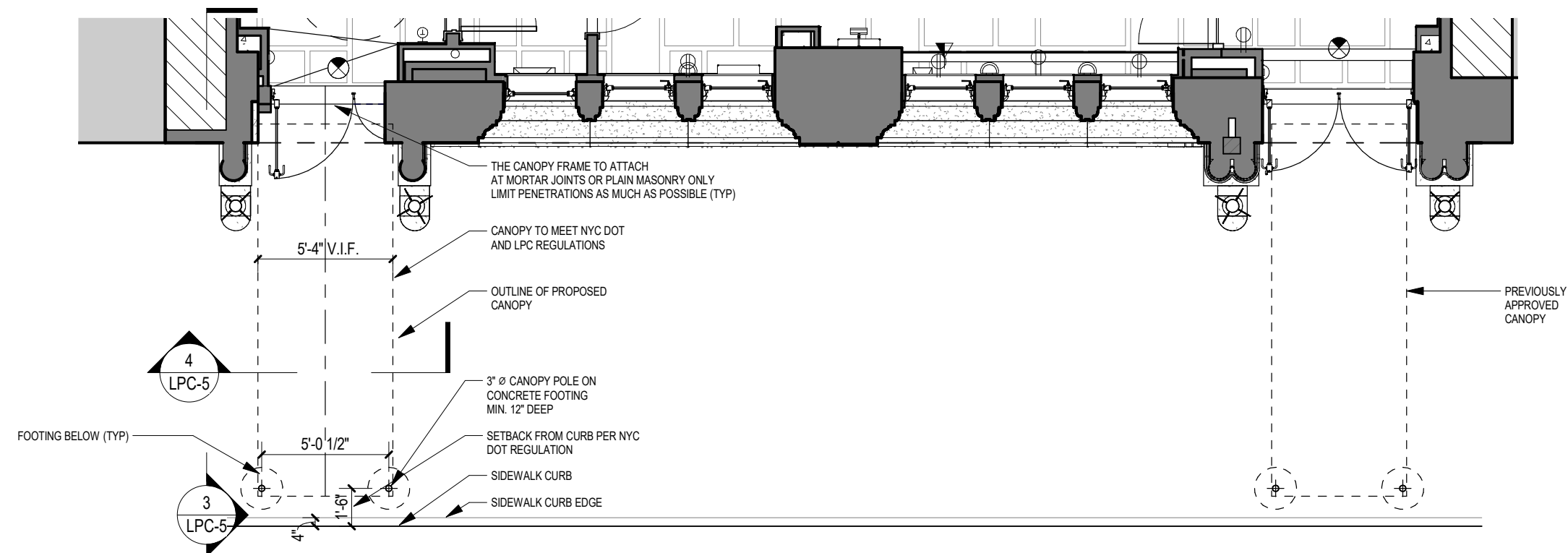
MATTE CANVAS CANOPY COLOR  
LOGOS/TEXT TO BE PAINT STENCILED  
AS SHOWN

PROPOSED VIEW FROM NORTH WEST OF SECOND CANOPY AT RESTAURANT ENTRANCE

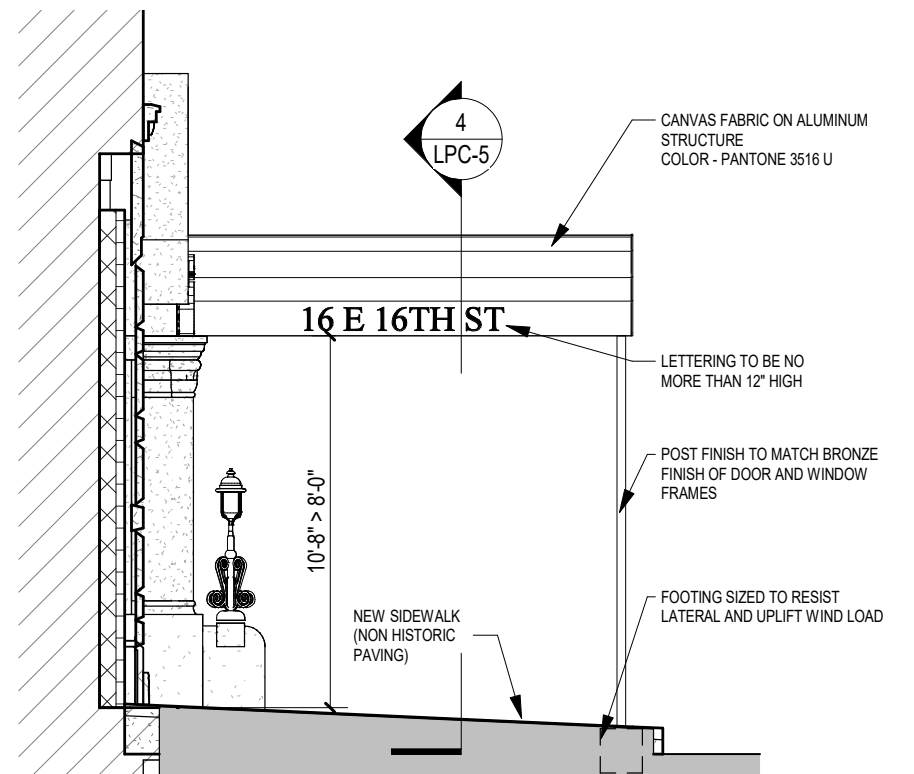




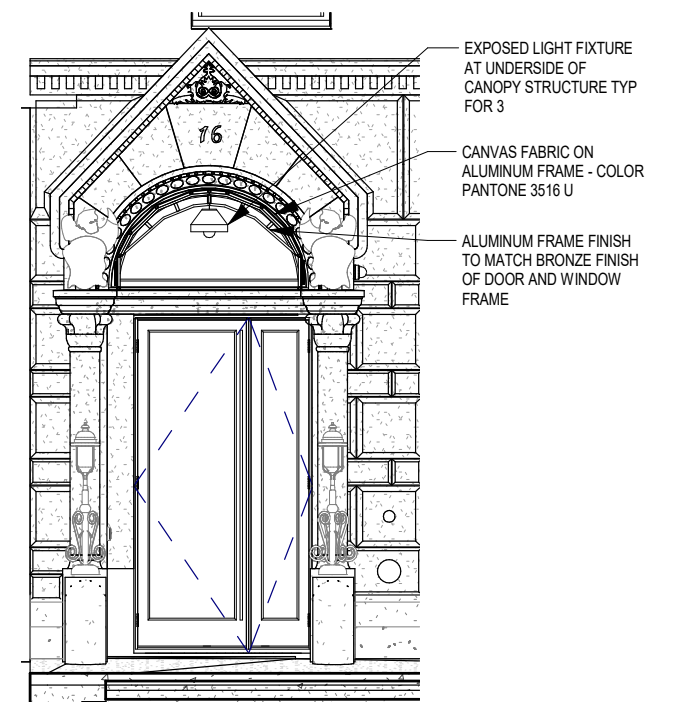
1 GROUND FLOOR ELEVATION  
3/16" = 1'-0"



2 PROPOSED PLAN  
3/16" = 1'-0"



3 BUILDING SECTION LOOKING WEST  
3/16" = 1'-0"



4 SECTION AT CANOPY  
3/16" = 1'-0"

PROPOSED SECOND CANOPY AT RESTAURANT ENTRANCE TO MATCH APPROVED CANOPY AT HOTEL ENTRANCE

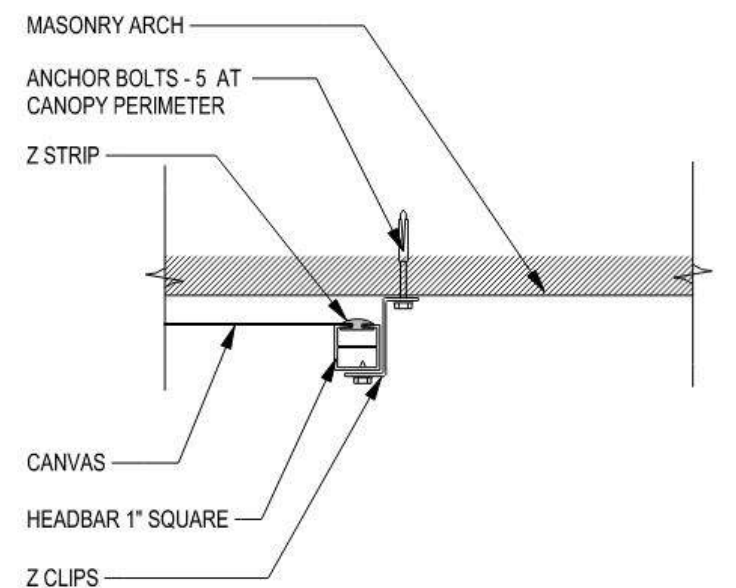
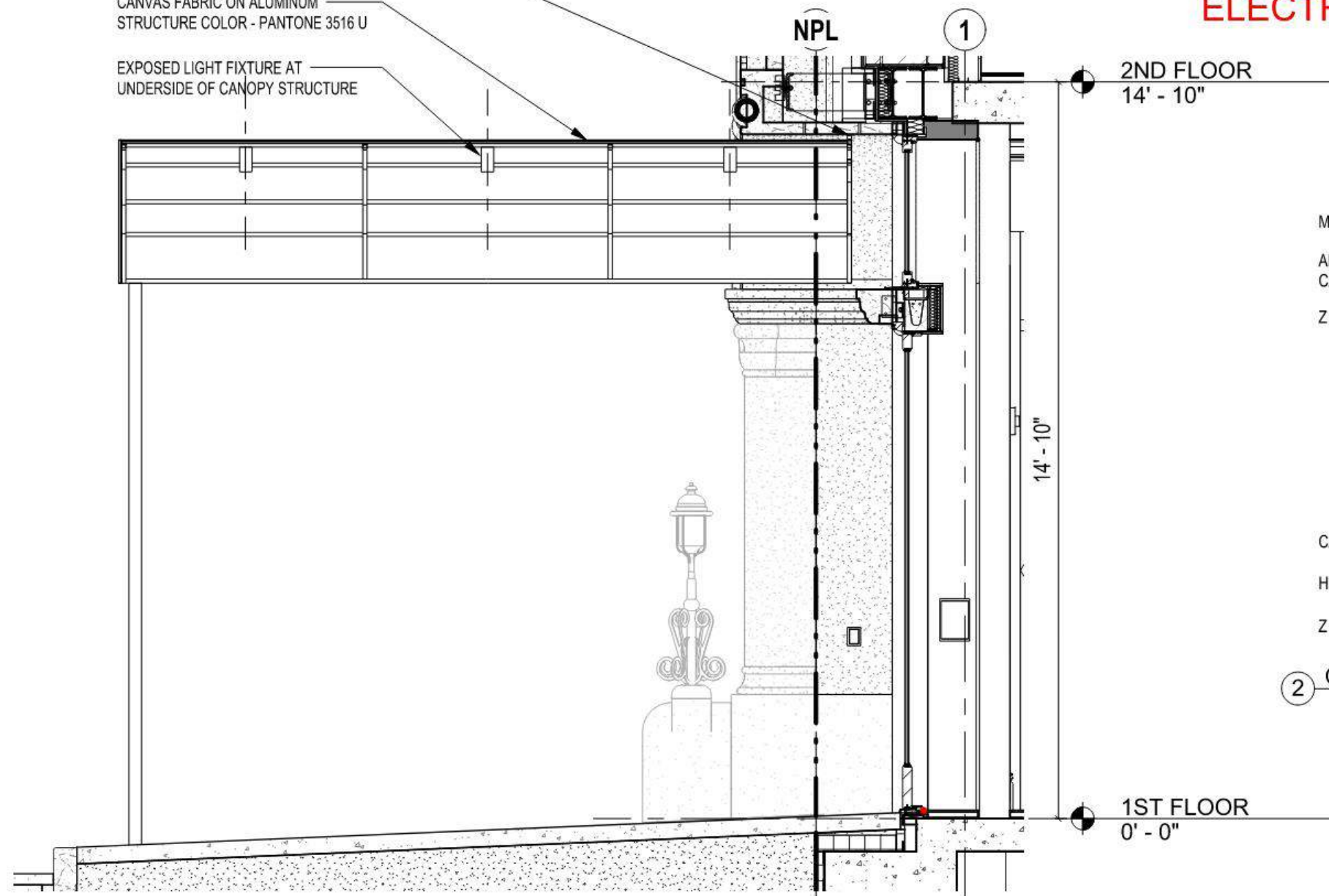


ANCHOR BOLT ATTACHMENT TO  
STONE - 5 TOTAL

CANVAS FABRIC ON ALUMINUM  
STRUCTURE COLOR - PANTONE 3516 U

EXPOSED LIGHT FIXTURE AT  
UNDERSIDE OF CANOPY STRUCTURE

LANDMARKS PRESERVATION COMMISSION  
ELECTRONIC APPROVAL - 10/10/2024 - EF



② CANOPY ATTACHMENT DETAIL TO ARCH  
3" = 1'-0"

LANDMARKS PRESERVATION COMMISSION  
ELECTRONIC APPROVAL - 10/10/2024 - EF

PROPOSED SECTION AND DETAIL AT SECOND CANOPY TO MATCH APPROVED





131 5TH AVE



154 W 18TH ST



12 EAST 16TH ST (NEIGHBORING BUILDING 1940 TAX PHOTO)



664 6TH AVE



46 W 17TH ST



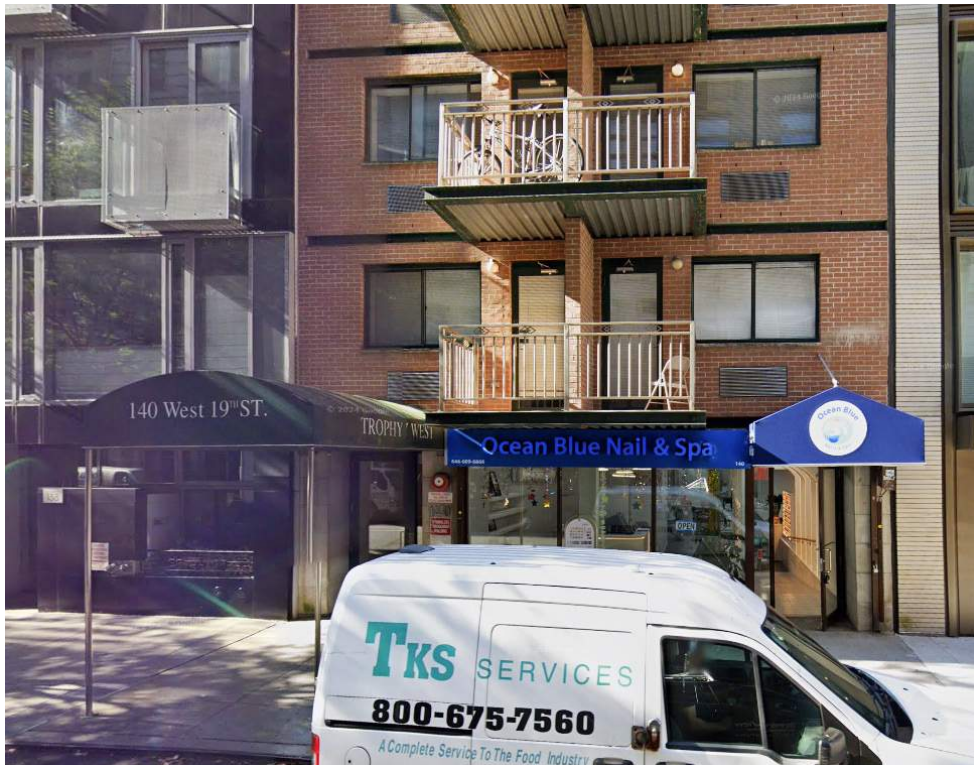
121-121A WEST 20TH STREET

# CANOPY PRECEDENTS IN LADIES MILE HISTORIC DISTRICT





20-22 EAST 22ND STREET



140 W 19TH STREET



21 EAST 16TH ST



71 5TH AVE



123 W 20TH ST



106 E 19TH ST

# CANOPY PRECEDENTS VERY NEAR LADIES MILE HISTORIC DISTRICT



May 20, 2025  
Public Hearing

The current proposal is:

Preservation Department – Item 3, LPC-25-08741

**16 East 16th Street – Ladies' Mile Historic District**  
**Borough of Manhattan**

**To testify virtually, please join Zoom**

**Webinar ID:** 161 839 5980

**Passcode:** 052350

By Phone: 646-828-7666 (NY)

833-435-1820 (Toll-free)

833-568-8864 (Toll-free)

**Note:** If you want to testify virtually on an item, join the Zoom webinar at the agenda's "Be Here by" time (about an hour in advance). When the Chair indicates it's time to testify, "raise your hand" via the Zoom app if you want to speak (\*9 on the phone). Those who signed up in advance will be called first.

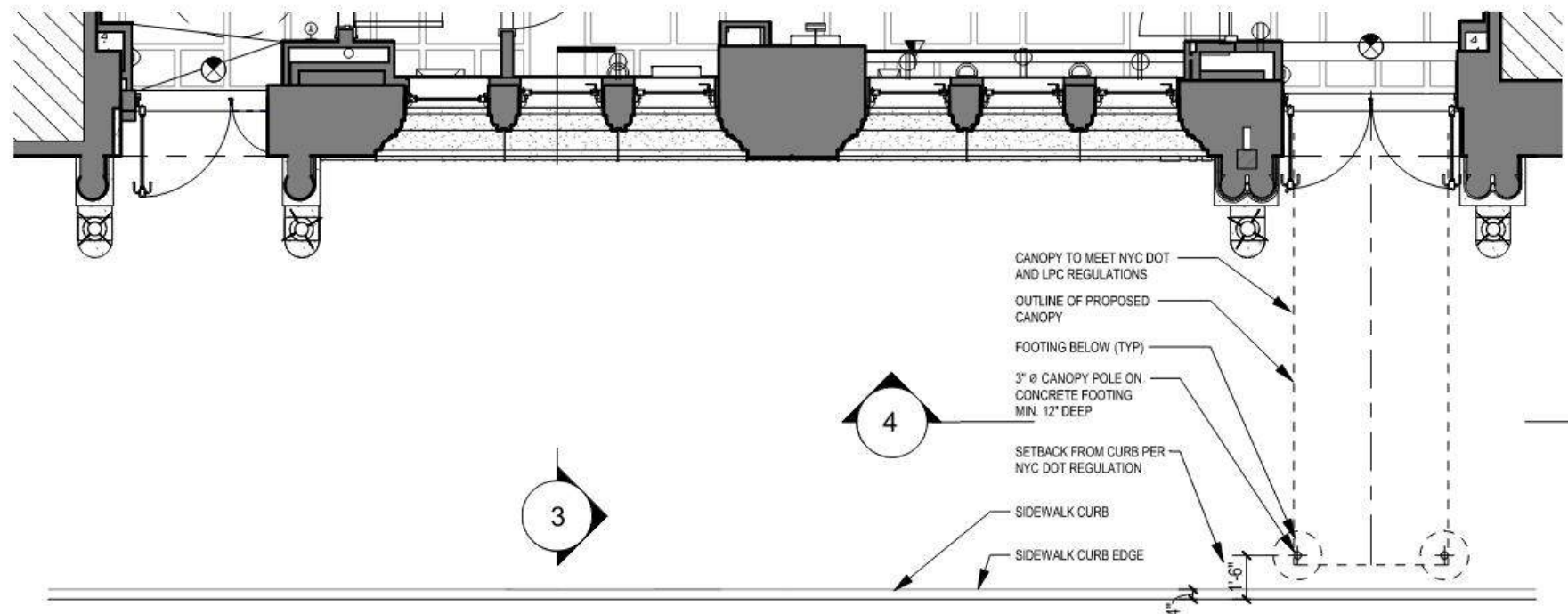


# APPENDIX





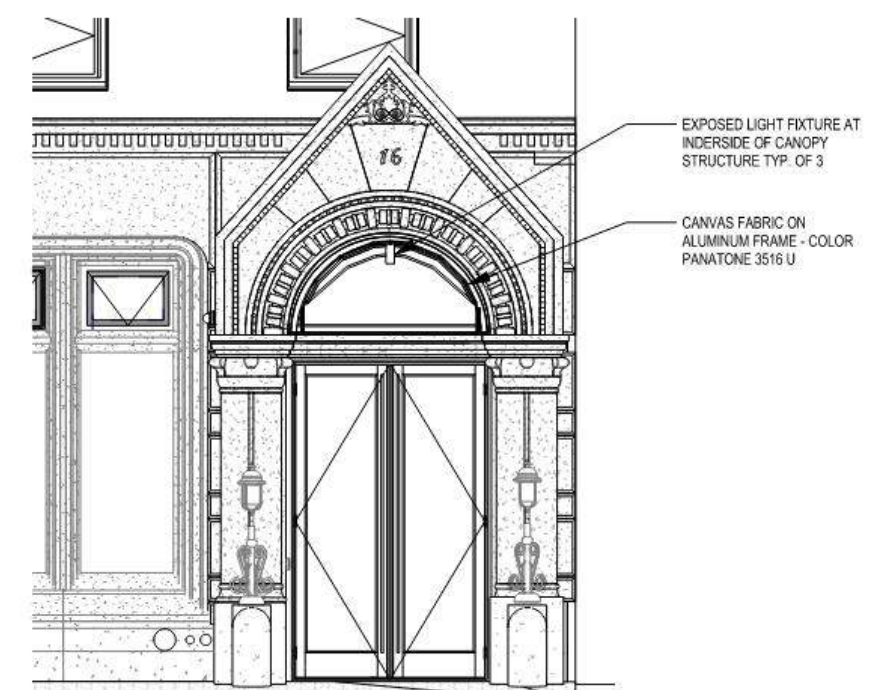
1 GROUND FLOOR ELEVATION  
3/16" = 1'-0"



2 PROPOSED PLAN  
3/16" = 1'-0"



3 BUILDING SECTION LOOKING WEST  
3/16" = 1'-0"



4 SECTION AT CANOPY  
3/16" = 1'-0"

PREVIOUSLY APPROVED SINGLE CANOPY AT HOTEL ENTRANCE



LANDMARKS PRESERVATION COMMISSION  
ELECTRONIC APPROVAL - 10/10/2024 - EF



Pantone 7599 C Color | Hex color Code ...

MATTE CANVAS CANOPY COLOR  
LOGOS/TEXT TO BE PAINT STENCILED  
AS SHOWN

LANDMARKS PRESERVATION COMMISSION  
ELECTRONIC APPROVAL - 10/10/2024 - EF

APPROVED VIEW FROM NORTH WEST OF CANOPY AT HOTEL ENTRANCE



CYLINDER 1  
SURFACE MOUNT

Our best-selling cylinders keep getting better. Adjustable, fixed, and wallwash are all offered in a broad range of sizes, with lumens from 500 to almost 5000lm, standard 90° tilt, and more than a dozen finish options. Now, there's a fixture for anywhere you need to illuminate anything.

ORDERING INFORMATION



Quick Ship Product. All rough in components ship within 10 days up to quantities of 100.



JA8-2022 COMPLIANCE INDICATED BY SHADING

CYLINDER	FUNCTION	RATING	CYLINDER FINISH	BAFFLE FINISH	CRI / WATTAGE PACKAGE	CCT	OPTIC (UGR)	MEDIA	POWER SUPPLY	MOUNTING
CY1X										
CY1X 2.5" Ø	AD 90° Adjustable AS 90° Adjustable Shallow Canopy *Remote driver only) AW Adjustable Wallwash FB Fixed WW Wallwash Fixed	1 Dry / Damp (IP30) 2 Wet (IP65)	POWDERCOAT FINISHES WH White AG Satin Silver AU Cashmere Gold AB Architectural Bronze BB Burnt Bronze BK Black CF Custom Finish* *Consult Factory) ALUMINA FINISHES 01 Brushed Obsidian 02 Matte Obsidian 03 Brushed Dark Patinated Bronze 04 Matte Dark Patinated Bronze 05 Brushed Aged Aluminum 06 Matte Aged Aluminum 07 Brushed Cast Brass 08 Matte Cast Brass 09 Brushed Light Patinated Bronze 10 Matte Light Patinated Bronze FINISH IMAGES ON PAGE 2	POWDERCOAT FINISHES WH White AG Satin Silver AU Cashmere Gold AB Architectural Bronze BB Burnt Bronze BK Black CF Custom Finish* *Consult Factory) ALUMINA FINISHES 01 Brushed Obsidian 02 Matte Obsidian 03 Brushed Dark Patinated Bronze 04 Matte Dark Patinated Bronze 05 Brushed Aged Aluminum 06 Matte Aged Aluminum 07 Brushed Cast Brass 08 Matte Cast Brass 09 Brushed Light Patinated Bronze 10 Matte Light Patinated Bronze FINISH IMAGES ON PAGE 2	STATIC WHITE 80S11A 80+ CRI, 11 Watts 1104 lm delivered 80S17A 80+ CRI, 17 Watts 1643 lm delivered 90S11A 90+ CRI, 11 Watts 952 lm delivered 90S17A 90+ CRI, 17 Watts 1416 lm delivered 97S11A 97+ CRI, 11 Watts 838 lm delivered 97S17A 97+ CRI, 17 Watts 1246 lm delivered WARM DIM 90W18A 90+ CRI, 18 Watts Incandescent Profile 1216 lm delivered Halogen Profile 1202 lm delivered *SEE PAGE 4 FOR DETAILED PERFORMANCE CONFIGURA- TIONS AND WARM DIM PROFILE COMPARISON. TUNABLE WHITE REMOTE DRIVER ONLY) 90T17A 90+ CRI, 17 Watts Warm Profile 1291 lm delivered Cool Profile 1251 lm delivered *ALL DELIVERED LUMEN OUT- PUTS AND T24 COMPLIANCE RE- FLECT 3000K PAIRED WITH 60° OPTIC AND SOFT FOCUS LENS.	24 2400K* *110+ CRI only) 27 2700K 30 3000K 35 3500K 40 4000K WL 2700K - 1800K WD 3000K - 1800K TR 4000K - 1800K TH 5000K - 2700K *SEE PAGE 4 FOR UGR VALUES	10 10° (<16) *117 Watts only) 15 15° (<16) 20 20° (<10) 25 25° (<10) 40 40° (<10) 60 60° (<16) *Not available for Warm Dim or Wet Locations) 2 Honey Comb Louver (HCL)* *Not available for Warm Dim or Wet Locations) 3 Clear Glass Lens (CGL)* *Not available for Warm Dim) 5 Frosted Glass Lens (FGL) 6 Frosted Soft Focus Lens (FSFL) 7 Frosted Linear Spread Lens (FLSL) C Clear Glass Film w/ Honeycomb Louver S Soft Focus Film w/ Honeycomb Louver W Wallwash Lens* *Required for WW and AW fixture)	STANDARD MEDIA 4 Soft Focus Lens (SFL)* *Required for 10° optic) ALTERNATE MEDIA 0 No Lens* *Not available for Warm Dim or Wet Locations) 1RE Forward/Reverse REMOTE (120V) 1RE Forward/Reverse REMOTE (120-277V) URA 0-10V Analog ULH Lutron Hi-Lume Ecosystem 1% Fade to Black Philips Xitanium 1% 0-10V, LOG eidoLED, ULN Philips Xitanium 1% 0-10V, LIN eidoLED, UEG 0.1% 0-10V, LOG eidoLED, UEN 0.1% 0-10V, LIN eidoLED, UED 0.1% DALI-2, LOG eidoLED, ULD 0.1% DALI-2, LIN eidoLED, UAS1/ Athena Control UASR EidoLED, 0.1% 120-277V* UCS1/Casambi Control UCSR EidoLED, 0.1% 120-277V* *Includes Node. Extended lead time, consult factory. UASR/UCSR includes short.) TUNABLE WHITE REMOTE (0.1%, 120-277V) UDD eidoLED, DUALdrive DALI-2, LOG UDG eidoLED, DUALdrive 0-10V, LOG UDN eidoLED, DUALdrive 0-10V, LIN UAD1/ Athena Control, UADR EidoLED, DUALdrive* UCD1/Casambi Control, UCDR EidoLED, DUALdrive* *Includes Node. Extended lead time, consult factory. UADR/UCDR includes short.)	INTEGRAL UCA 0-10V Analog 120-277V ICE 120V Electronic Forward/Reverse REMOTE (120V) 1RE Forward/Reverse REMOTE (120-277V) URA 0-10V Analog ULH Lutron Hi-Lume Ecosystem 1% Fade to Black Philips Xitanium 1% 0-10V, LOG eidoLED, ULN Philips Xitanium 1% 0-10V, LIN eidoLED, UEG 0.1% 0-10V, LOG eidoLED, UEN 0.1% 0-10V, LIN eidoLED, UED 0.1% DALI-2, LOG eidoLED, ULD 0.1% DALI-2, LIN eidoLED, UAS1/ Athena Control UASR EidoLED, 0.1% 120-277V* UCS1/Casambi Control UCSR EidoLED, 0.1% 120-277V* *Includes Node. Extended lead time, consult factory. UASR/UCSR includes short.) TUNABLE WHITE REMOTE (0.1%, 120-277V) UDD eidoLED, DUALdrive DALI-2, LOG UDG eidoLED, DUALdrive 0-10V, LOG UDN eidoLED, DUALdrive 0-10V, LIN UAD1/ Athena Control, UADR EidoLED, DUALdrive* UCD1/Casambi Control, UCDR EidoLED, DUALdrive* *Includes Node. Extended lead time, consult factory. UADR/UCDR includes short.)	ROUGH-IN JBMP 4" Sq. or 4/0 Junction Box Mounting Plate FINISH OUT CMJB 1/2" and 3/4" Conduit Ceiling Mount Junction Box* *Available in powdercoat finishes. Alumina finish fixtures ship with Black powdercoat CMJB. Dry/ Damp rated.) SMK3 3/0 Surface Mount Kit* SMK4 4/0 Surface Mount Kit* *Available in powdercoat finishes. Dry/Damp rated.)

PART NUMBER NOTES

- CY1X ships as e.g., CY1XAD1WHWH80S17A304041CE3
- Remote driver ships as e.g., PS-RMT-80S17A-1RE3
- Mounting part numbers listed on page 6

LANDMARKS PRESERVATION COMMISSION  
ELECTRONIC APPROVAL - 10/10/2024 - EF

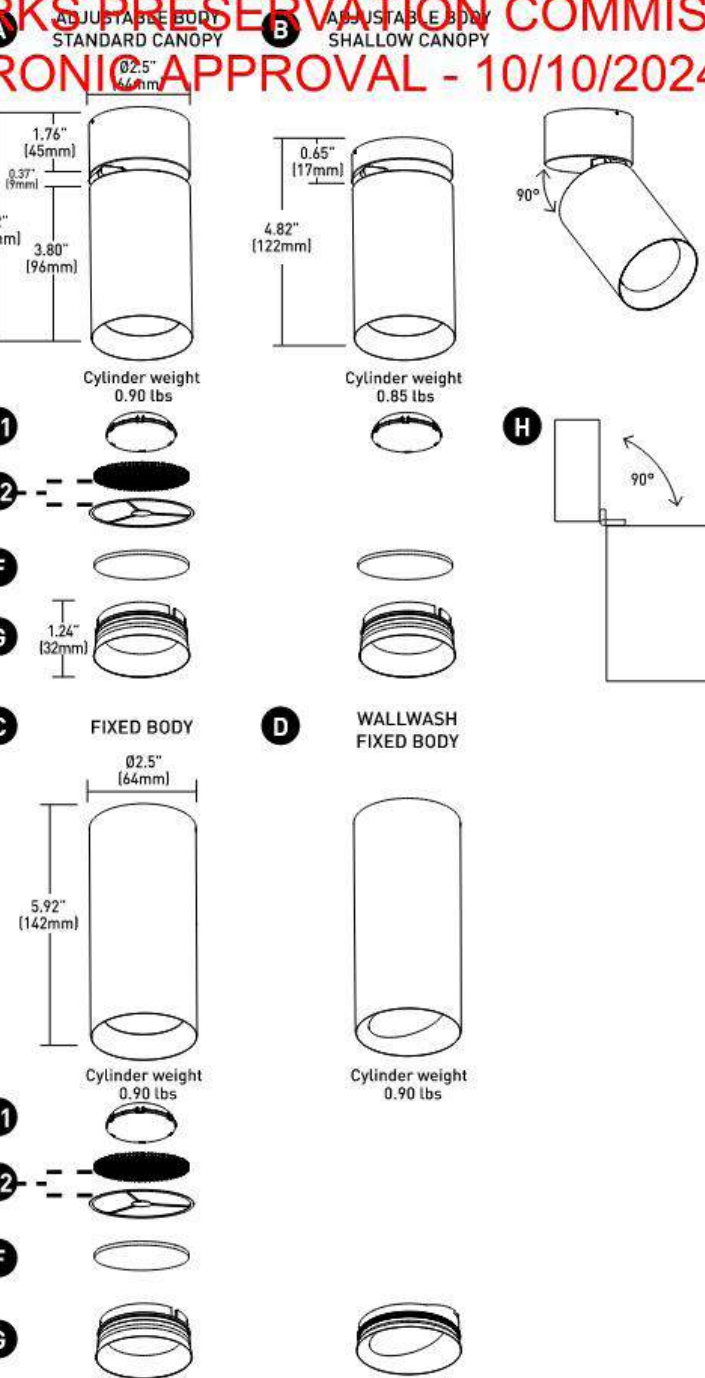
Declare.  
[PH] +1-210-227-7329 pg. 1  
[FAX] +1-210-227-4967

CYLINDER 1 SURFACE MOUNT

CYLINDER ASSEMBLY

- A ADJUSTABLE - STANDARD CANOPY**  
Die-cast canopy accommodates flat and sloped ceiling conditions. Conceals hidden mounting hardware. "AD" (90° tilt, 365° rotation) canopy features 1.76" (45mm) tall canopy. Available with integral or remote driver.
- B ADJUSTABLE - SHALLOW CANOPY**  
Die-cast canopy accommodates flat and slope ceiling conditions. Conceals hidden mounting hardware. "AS" (90° tilt, 365° rotation) canopy features 0.65" (17mm) tall canopy, reducing overall height. Requires remote power supply.
- C FIXED BODY**  
Body with integrated heat sink and LED. Conceals mounting hardware. Power supply may be integral or remote mount.
- D WALLWASH FIXED BODY**
- E1 OPTICS**  
Robust light engine with optimized optic pairing integrates Reflection, Refraction, and TIR offering 10°, 15°, 20°, 25°, 40° & 60° beams.
- E2 10° FIELD REDUCER**  
Included with 10° optic. Reduces field angle by 10%.
- F MEDIA**  
Cylinder accepts 2 lenses; soft focus lens, no lens, or wallwash lens standard. Sealed in place for Wet locations.
- G BAFFLE**  
Die-cast baffle minimizes aperture glare and conceals view into fixture.
- H WALL-MOUNT**  
Cylinder may be wall mounted using any mounting option.

DIMENSIONS / DRAWINGS



LUCIFER  
LIGHTING COMPANY  
[DATE OF REV: 07222024]

luciferlighting.com

©2024 Lucifer® Lighting Company  
As part of its policy of continuous research and product development, the company reserves the right to change or withdraw specifications without prior notice.

[PH] +1-210-227-7329 pg. 5  
[FAX] +1-210-227-4967

PROPOSED LIGHT FIXTURE AT SECOND CANOPY TO MATCH APPROVED

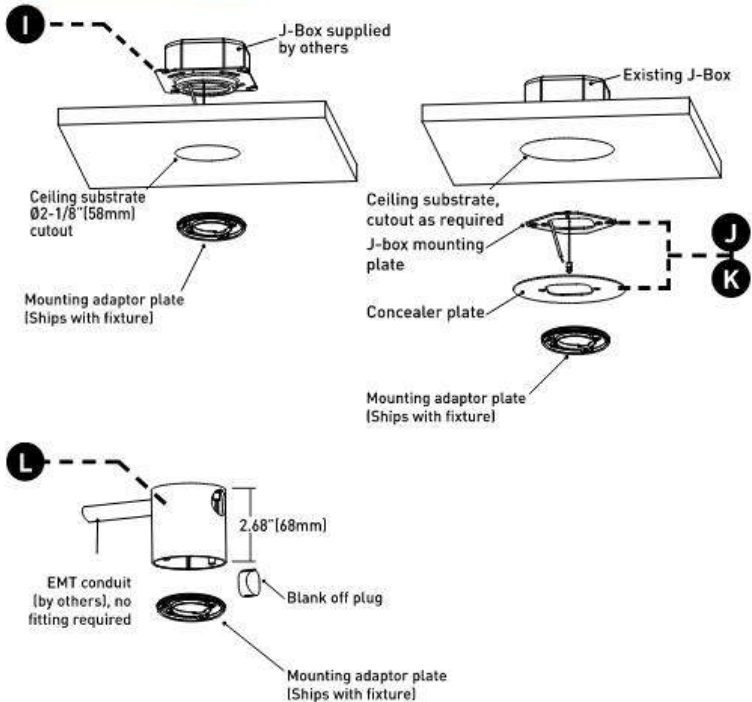


CYLINDER 1 SURFACE MOUNT

MOUNTING

- I JBMP**  
Mounting plate (concealed) for standard 4" square or 4" 4/0 j-box. To be installed during rough-in prior to substrate. Fixture to mount flush with minimalist transition to ceiling.  
Part Number - CY1X-JBMP
- J SMK3**  
Surface mount kit includes mounting plate and 4" concealer plate that installs between fixture and standard 3" 3/0 j-box for existing applications where standard j-box cutout is to be concealed.  
Part Number - CY1X-SMK-3/0-(FINISH)
- K SMK4**  
Surface mount kit includes mounting plate and 5" concealer plate that installs between fixture and standard 4" 4/0 j-box for existing applications where standard j-box cutout is to be concealed.  
Part Number - CY1X-SMK-4/0-(FINISH)
- L CMJB**  
Ceiling mount junction box perfectly matches the cylinder profile for a continuous, integrated look where exposed ceiling mount junction box and conduit applications apply. For use with 1/2" and 3/4" EMT conduit only. Features two conduit entrances on either side and one conduit knockout on top of j-box. J-box is IP10 rated; painted finishes only. Blank off plugs included.  
Part Number - CY1X-CMJB-(FINISH)

DIMENSIONS / DRAWINGS

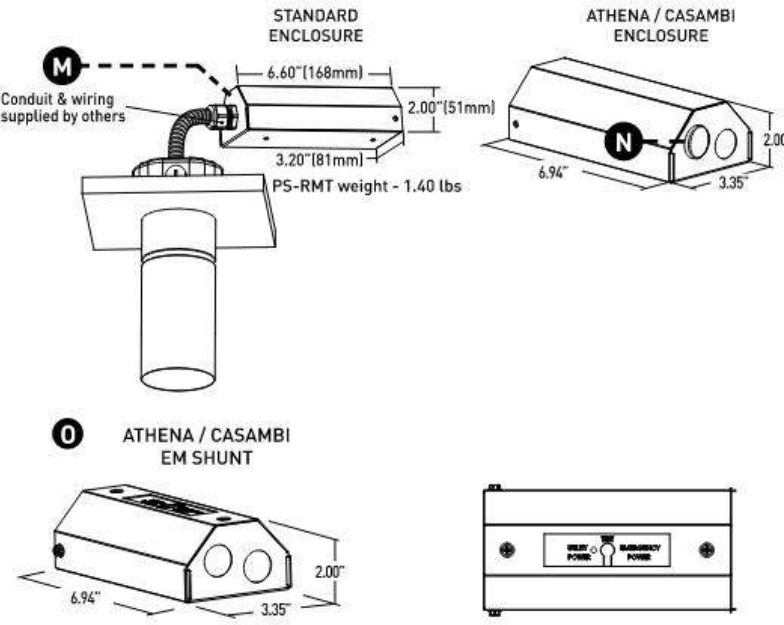


MOUNTING NOTES

- CY1X-JBMP and CY1X-SMK-3/0 & 4/0 not recommended for use with pancake style j-box.

REMOTE POWER SUPPLY

- M PS-RMT**  
Remote power supply must be mounted in accessible area. Mounting device still required. Consult page 8 for dimming compatibility list. Consult install guide for complete details of suitable controls, wiring diagrams, and maximum allowable secondary run lengths between PS-RMT and cylinder.
- N ATHENA / CASAMBI CONTROL**  
Controls integrated into remote driver assembly. All equipment is serviceable.  
Athena Model Number: A-WN-D01-RF-BL & DC-OEM-DBI  
Casambi Model Number: BT-S1E1-5400
- O ATHENA / CASAMBI EM SHUNT**  
Included with drivers specified as ASR, ADR, CSR, or CDR. One required for each wireless EM fixture, requires class 2 control wiring between fixture and shunt. Features integrated test switch.  
Model Number: PS-RMT-SHUNT



CYLINDER 1 SURFACE MOUNT

ACCESSORIES

- REPLACEMENT MEDIA**  
Dry / Damp location only, consult factory for wet location replacements
- ☐ SFL-CY1X-03 Soft Focus Lens
  - ☐ HCL-CY1X-03 Honeycomb Louver \*
  - ☐ CGL-CY1X-03 Clear Glass Lens \*
  - ☐ FGL-CY1X-03 Frosted Glass Lens
  - ☐ FSFL-CY1X-03 Frosted Soft Focus Lens
  - ☐ FLFL-CY1X-03 Frosted Linear Spread Lens
  - ☐ CGL-HCL-CY1X-03 Clear Glass Film W/ Honeycomb Louver
  - ☐ SFL-HCL-CY1X-03 Soft Focus Film W/ Honeycomb Louver

STATIC WHITE REPLACEMENT OPTICS

- ☐ R0-50-15-S 15° optic
- ☐ R0-50-20-S 20° optic
- ☐ R0-50-25-S 25° optic
- ☐ R0-50-40-S 40° optic
- ☐ R0-50-60-S 60° optic

WARM DIM REPLACEMENT OPTICS

- ☐ R0-50-20-W 20° optic
- ☐ R0-50-25-W 25° optic
- ☐ R0-50-40-W 40° optic
- ☐ R0-50-60-W 60° optic

TUNABLE WHITE REPLACEMENT OPTICS

- ☐ R0-50-15-T 15° optic
- ☐ R0-50-20-T 20° optic
- ☐ R0-50-25-T 25° optic
- ☐ R0-50-40-T 40° optic
- ☐ R0-50-60-T 60° optic

SUCTION CUP TOOL

- ☐ CYX-TOOL-SUCTION Baffle removal tool, provided with every 5 fixtures

EMERGENCY LIGHTING - REMOTE MOUNT ONLY

- During disruption of main power, emergency battery inverter provides temporary 120V or 277V to fixture.
- ☐ EMB-S-25-120/277-LEDX 25 watt max capacity, 120 or 277 VAC 60Hz
  - ☐ EMB-S-100-120-LEDX 100 watt max capacity, 120 VAC 60Hz, 0-10V dimmable
  - ☐ EMB-S-100-277-LEDX 100 watt max capacity, 277 VAC 60Hz, 0-10V dimmable
  - ☐ EMB-S-250-120/277-LEDX 250 watt max capacity, 120 or 277 VAC 60Hz
- \*SHUNT REQUIRED FOR USE WITH ATHENA AND CASAMBI CONTROLS, CONSULT FACTORY FOR DETAILS.

LANDMARKS PRESERVATION COMMISSION  
ELECTRONIC APPROVAL - 10/10/2024 - EF

POWDERCOAT FINISHES



LANDMARKS PRESERVATION COMMISSION  
ELECTRONIC APPROVAL - 10/10/2024 - EF

[PH] +1-210-227-7329  
[FAX] +1-210-227-4967  
pg. 6

**LUCIFER**  
LIGHTING COMPANY  
[DATE OF REV: 07222024]

luciferlighting.com

©2024 Lucifer® Lighting Company  
As part of its policy of continuous research and product development, the company reserves the right to change or withdraw specifications without prior notice.

[PH] +1-210-227-7329  
[FAX] +1-210-227-4967  
pg. 2

PROPOSED LIGHT FIXTURE AT SECOND CANOPY TO MATCH APPROVED



**May 20, 2025**  
Public Hearing

The current proposal is:

**Preservation Department – Item 3, LPC-25-08741**

**16 East 16th Street – Ladies' Mile Historic District**  
**Borough of Manhattan**

**To testify virtually, please join Zoom**

**Webinar ID:** 161 839 5980

**Passcode:** 052350

By Phone: 646-828-7666 (NY)

833-435-1820 (Toll-free)

833-568-8864 (Toll-free)

**Note:** If you want to testify virtually on an item, join the Zoom webinar at the agenda's "Be Here by" time (about an hour in advance). When the Chair indicates it's time to testify, "raise your hand" via the Zoom app if you want to speak (\*9 on the phone). Those who signed up in advance will be called first.