

May 6, 2025
Public Hearing

The current proposal is:

Preservation Department – Item 1, LPC-25-07995

Central Park – Scenic Landmark

Borough of Manhattan

To testify virtually, please join Zoom

Webinar ID: 160 059 3679

Passcode: 131371

By Phone: 646-828-7666 (NY)

833-435-1820 (Toll-free)

833-568-8864 (Toll-free)

Note: If you want to testify virtually on an item, join the Zoom webinar at the agenda's "Be Here by" time (about an hour in advance). When the Chair indicates it's time to testify, "raise your hand" via the Zoom app if you want to speak (*9 on the phone). Those who signed up in advance will be called first.



VICTORY

Landmarks Preservation Commission
New York City Percent-for-Art Program

Vinnie Bagwell, Lead Artist
BCT Design Group

Proposal Site

Fifth Avenue at 103rd Street, New York, New York

Five-minute walking radius

LANDSCAPE PLAN - **EXISTING**



Proposal Site

Fifth Avenue at 103rd Street, New York, New York



Dr. J. Marion Sims, Original location, Bryant Park, 1897



Dr. J. Marion Sims, relocation dedication, Central Park, 1934



Dr. J. Marion Sims, Central Park, 2017

Proposal Site

Fifth Avenue at 103rd Street, New York, New York



Council Speaker Melissa Mark-Viverito, 2017



Removal, 2018

Committee to Empower Voices for Healing and Equity
Invites You to Attend

BEYOND SIMS ARTIST SELECTION PANEL

Schomburg Center for Research in Black Culture · American Negro Theatre
515 Malcolm X Blvd. New York, NY 10037
Saturday, February 23rd
11 am - 2 pm · Doors Open at 10:30 am

FREE ENTRANCE

WE WANT TO HEAR FROM YOU
Following years of community activism, in April 2018 the City removed the statue of Dr. J. Marion Sims from Central Park East. Sims was a physician who gained fame in Western medicine for his experiments on enslaved African-American women. The Committee to Empower Voices for Healing and Equity was formed to move forward the process of commissioning a new artwork for the site by the end of 2020.

Join us for the artist selection panel to narrow down our pool of applicants to a select few artists and/or artist collectives who will be invited to submit proposals. This is an opportunity to meet members of the Steering Committee and to make your voice heard in the artist selection process. Feedback from the community throughout the selection process is essential as we collaborate on commissioning a new monument that helps us to heal and move beyond this painful legacy.

Maintenance fully accessible. For further information on accessibility or to request accommodations, please contact our Disability Service Facilitator at disabilityfacilitator@culture.nyc.gov or (212) 513-9376.

For questions please contact: percent@culture.nyc.gov

NYC Cultural Affairs **NYC Health** **Center for Health Equity** **East Harlem Preservation** **MUSEUM CITY OF NEW YORK** **THE NEW YORK ACADEMY OF MEDICINE**

Beyond Sims, 2018

Proposal Site

Fifth Avenue at 103rd Street, New York, New York



Proposal Site

Fifth Avenue at 103rd Street, New York, New York



Previous Artwork

VINNIE BAGWELL | Lead Artist

Vinnie Bagwell preserves African-American history by creating art for public places. She is a 2023 inductee for Who's Who in America for sculpture. A representational-figurative artist, Vinnie uses traditional bas-relief techniques as narratives to expand her storytelling. She has won numerous public-art commissions and awards around the United States, including Americans for the Arts inaugural José and Darlene Pérez Prize for civic engagement.

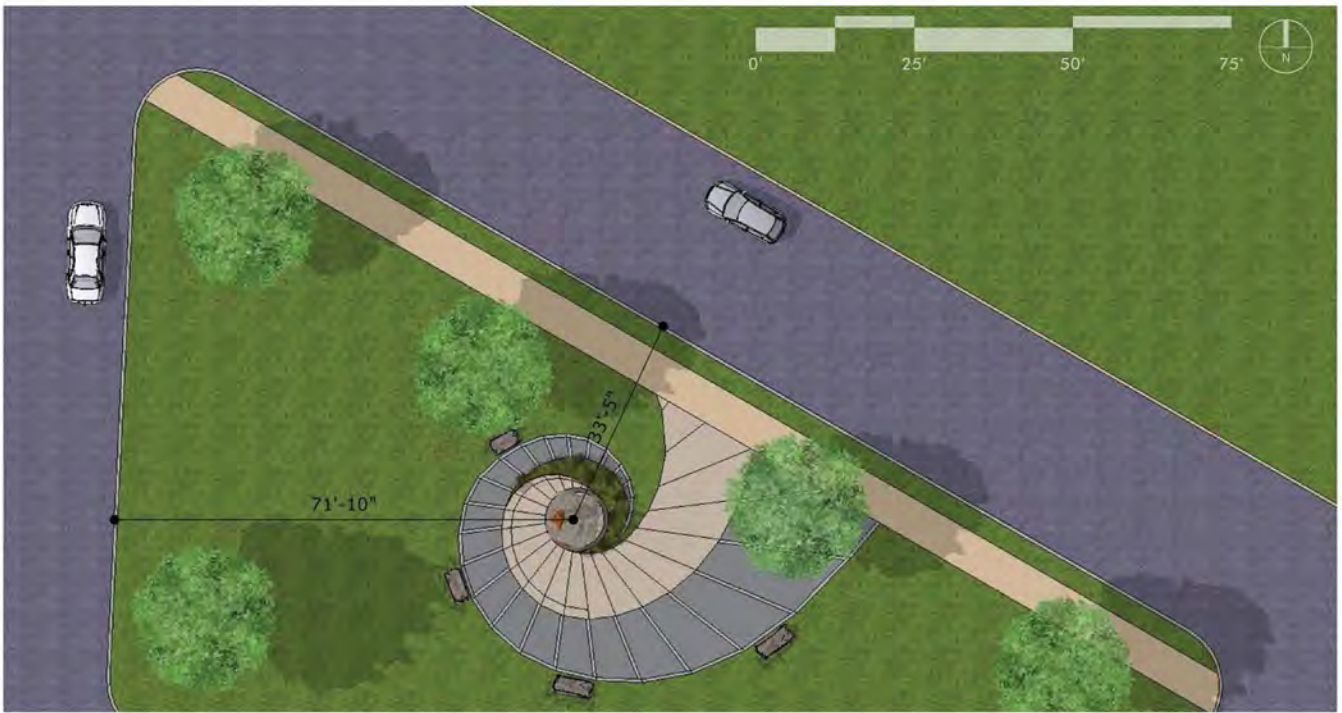
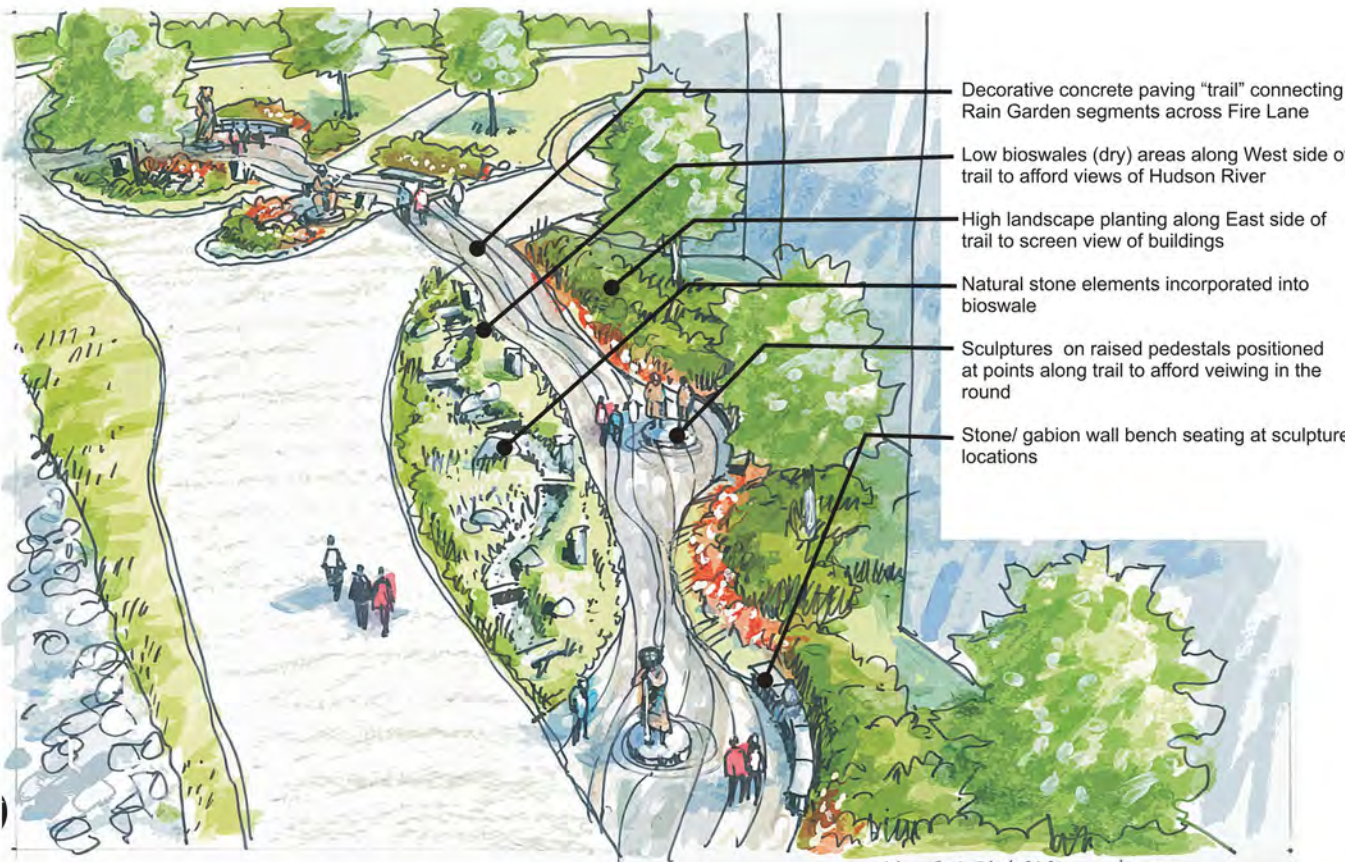


VINNIE BAGWELL | Lead Artist



BCT DESIGN GROUP

Bryce Turner, FAIA, CEO of BCT Design Group, is passionate about pedestrian-oriented public spaces and the built environment that interacts with them. Licensed in 20 U.S. states, he is well versed in the cultural and commercial amenities that accentuate public spaces and the design and planning that creates them. Together, Vinnie Bagwell and he are creating memorable destinations.



"The Enslaved Africans Rain Garden", Yonkers, NY
"Walter 'Doc' Hurley", Hartford, CT

BCT DESIGN GROUP



Lexington Market | Baltimore, MD
Annapolis City Dock | Annapolis, MD





VICTORY

Artwork Proposal

Conceptual Design



VICTORY

Description

A **guide for souls**—a 9' h. figure (approximately 14' h. with wings)—simply titled, *Victory*, will be cast in bronze and finished in a coal-black patina. The golden flame in her right hand represents the power of enlightenment. Her staff—crowned by the Arc of Asclepius encircled by a wreath—represents the unending circle of life.

Bas-relief techniques: A narrative in bas relief on the surface of *Victory*'s garment adds visual intrigue to capture the eye and hold it, telling an epic story to provoke critical thinking: The shape of the continent of Africa cut away from her heart represents the Motherland's ruinous loss of more than 12-million people over hundreds of years.

Twelve women are silhouetted, representing the resilient nameless. A slave-ship schematic "tattooed" on *Victory*'s back reminds the viewer of the inhumanity of transporting enslaved women like spoons in a draw. Braille reads, "*My Soul looks back and wonders how I got over!*" on her right side and "*Primum non nocere!*" (meaning "*First do no harm*") on the left.

"*Betsy, Lucy, Anarcha, and countless millions of African women were imbruted, enslaved, and stripped of their human rights...*" are the words emblazoned in the garment hem to remind viewers of the triumph of the generations who followed in their path. *Victory* was designed to function among us as an educator and a pioneer for change.



VICTORY

Description: Narrative Bas Relief expands storytelling



VICTORY

Description

Hand-cast bronze, an “eternal flame” (polished bronze) will rise out of the right hand.



VICTORY

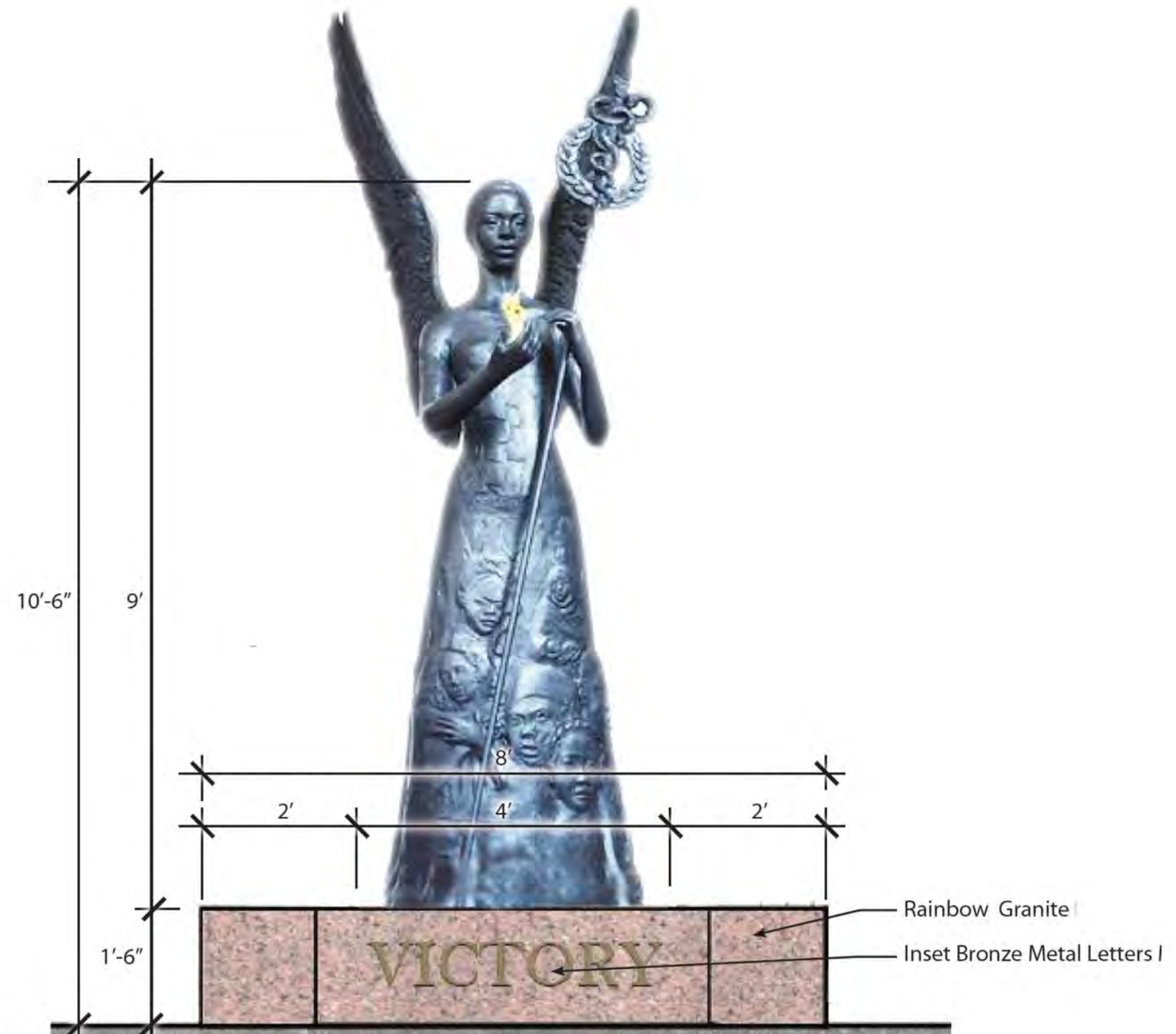
Specifications

Sculpture

- Medium: Bronze
- Size: 9' Figure | Approximately 14' with wings
- Color: Coal-black patina, polished
- Flame 1' h.

Pedestal

- Medium: Rainbow® granite
- Size: 8'w. x 4.5' d. x 1' 6"h.
- Finish: Textured
- Bronze inlaid lettering



VICTORY

Site-Plan: Description

The Sunburst Motif in granite pavers represents the vital Universal light of a living democracy, forward motion, and rising aspirations. It affirms our ancestors strong belief in the presence and power of God in our everyday life.

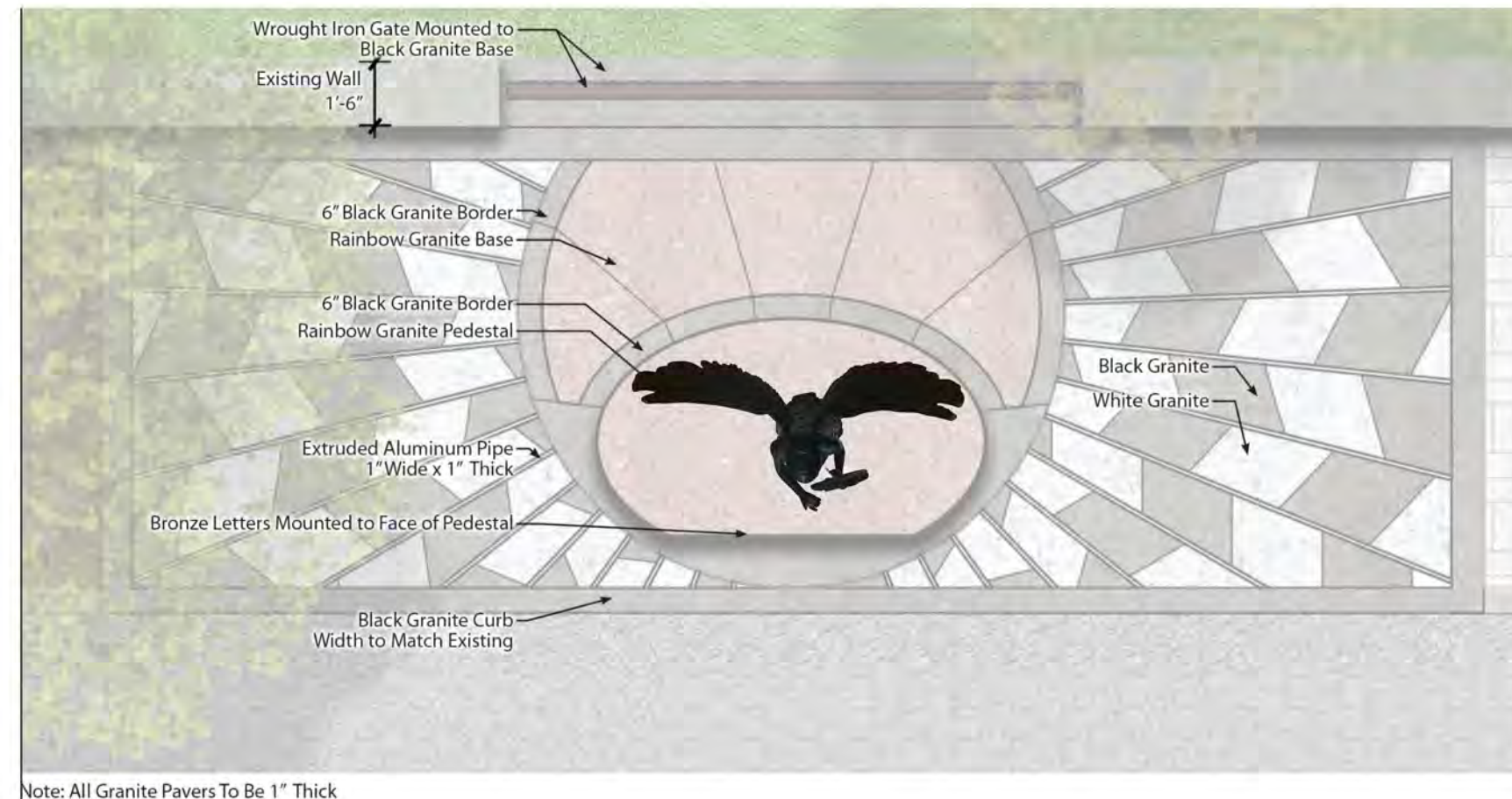
Pavers and Slabs Mesabi® Granite, Academy Black® Granite, Rainbow® Granite will create contrast in the graphic pattern and enhance visual interest.

Extruded-Aluminum Pipe will be installed between the granite pavers. These 1"-wide decorative metal insets, with a rectangular sectional shape, are a high-grade. It is a common fabrication that can easily be cut to length in field and fastened to a bituminous surface alongside granite pavers of equal thickness. It will be held in place by anchor bolts as consistent with paver edging. Installation will be simple and durable. Non-corrosive metal can be embedded into paving for decorative purposes and still maintain the same durability as trench drains and utility covers.

A Textured Rainbow® Granite Ellipse Pedestal will support the bronze figure. A slice off the front will bear the title, VICTORY, using a classic capitalized serif-font: Baskerville, which will be inlaid in brass in incised granite.

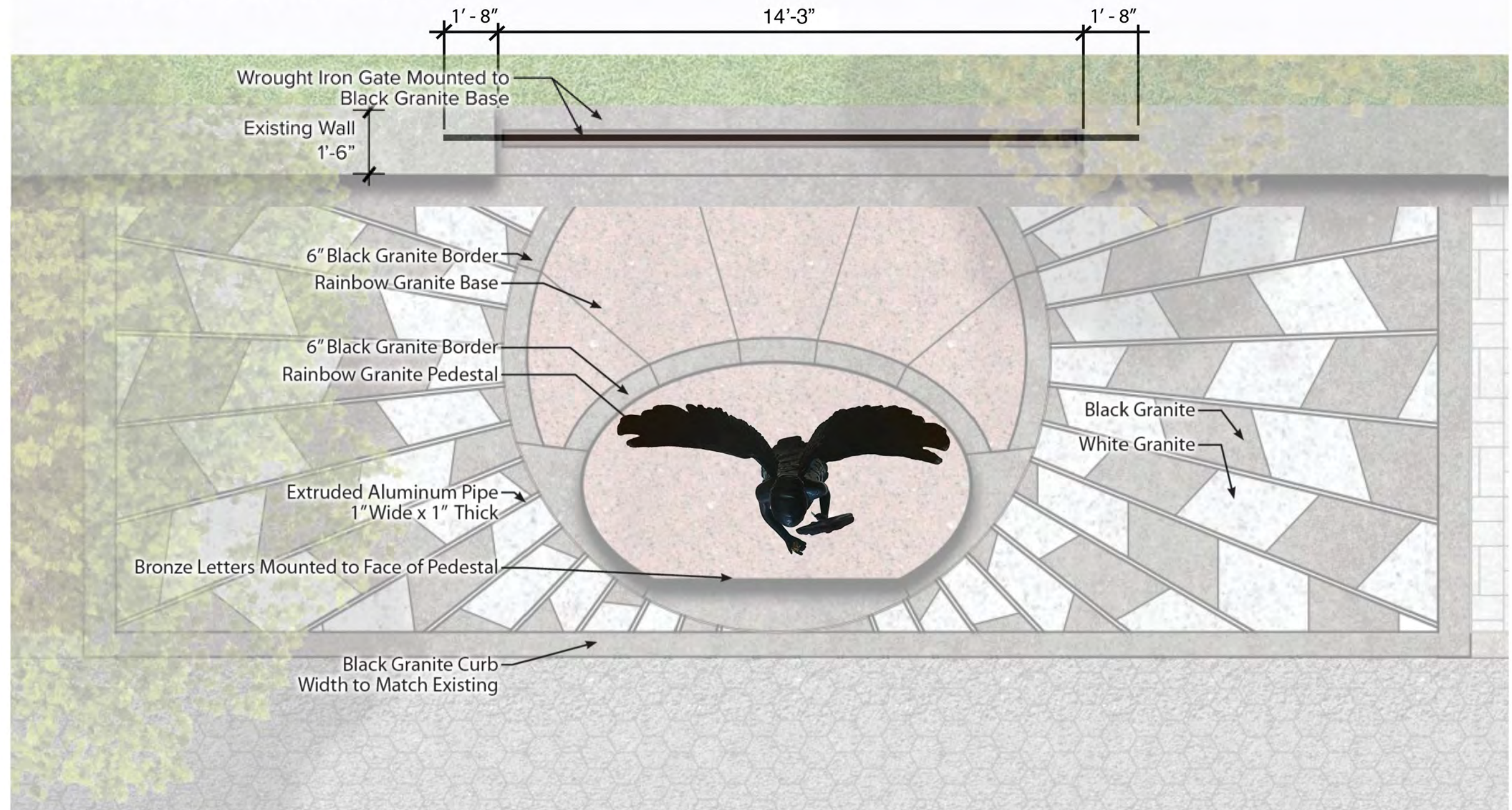
Wall-End Finish: The Conservancy will oversee finishing the stone wall ends.

An Ornamental Wrought-Iron Gate shall inhabit the open space that was occupied by the J. Marion Sims plinth. The arching 16'-10"-high gate is designed to draw the eye up. The side railings aid in expanding the width of the eye's sweep and balancing the intake of the visual presentation. Additional density in the design of the bottom will help to make climbing prohibitive. Central Park boasts four ornamental gates: Osborn, Lehman, Vanderbilt, and Levy. This will become the fifth.



VICTORY

Site-Plan: Overview Detail



VICTORY

Site-Plan: Design Samples

Academy Black® Granite



Mesabi® Granite



Rainbow® Granite



Brass Letters in Granite

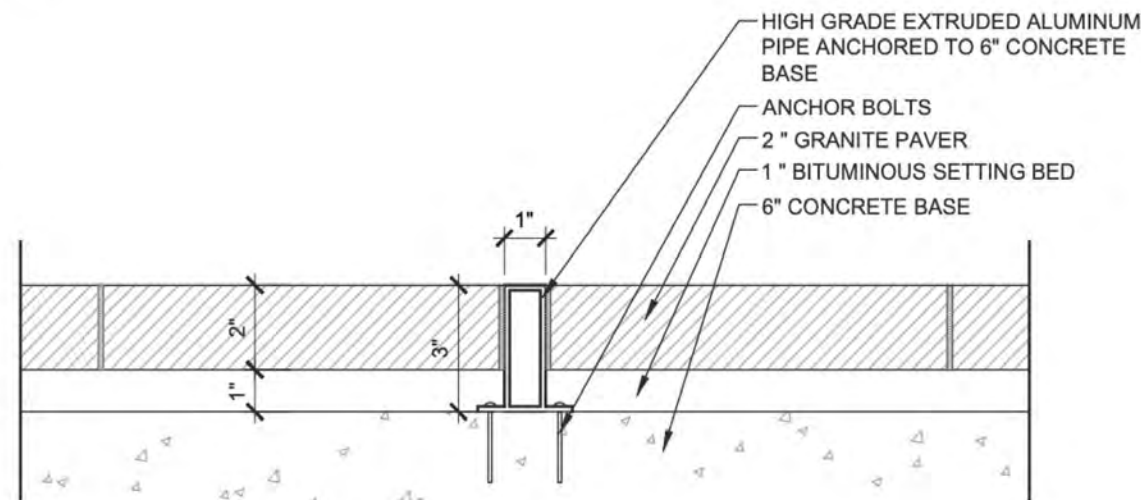


Extruded-Aluminum Pipe



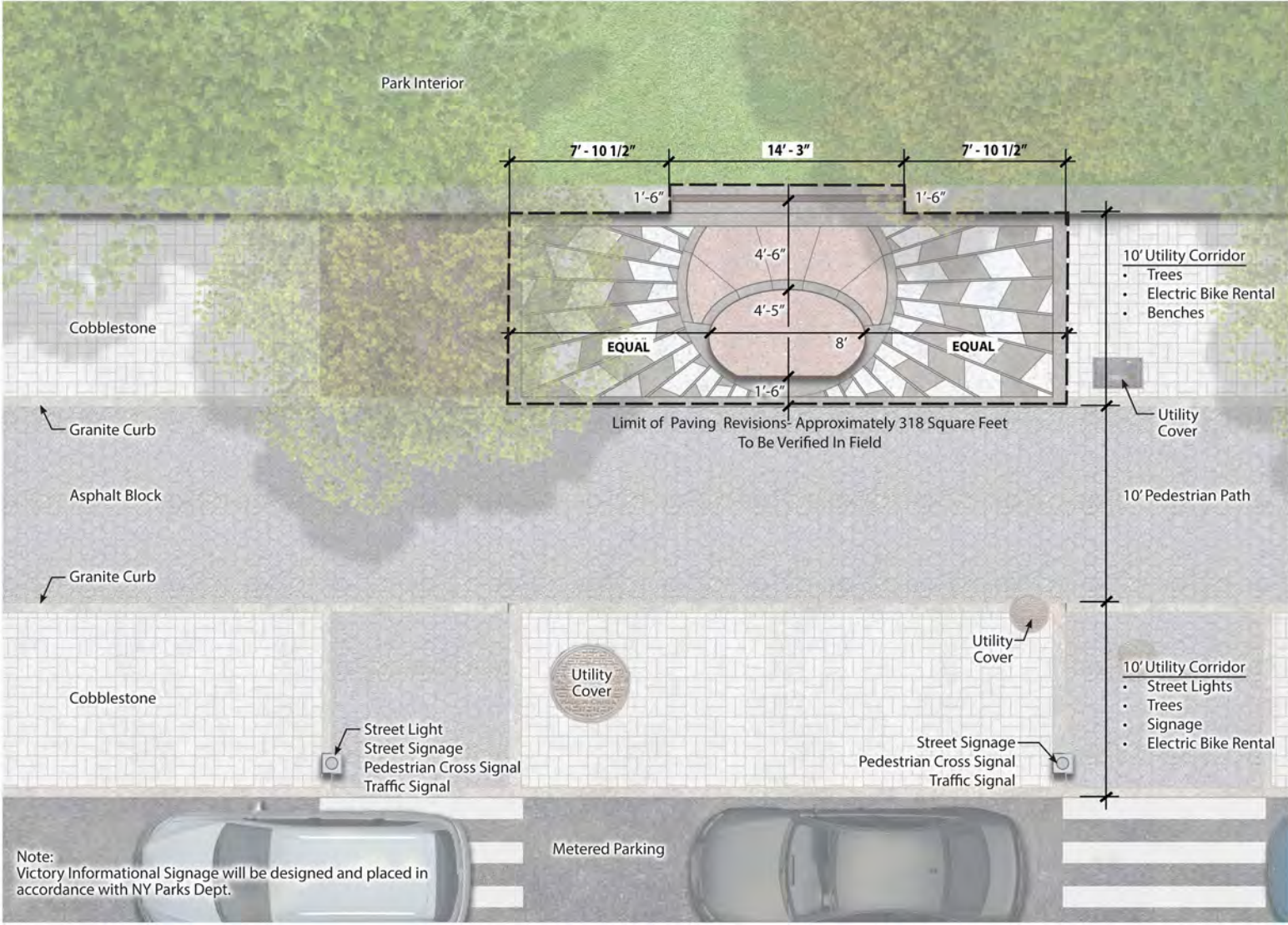
Extruded-Aluminum Pipe Detail

Note:
The 1" wide decorative metal inset into the granite paving is integral to the overall design. It represents the light of knowledge gained by the painful sacrifice of the women. This surgical knowledge now permeates throughout the world and has helped to save the lives of women for 140 years.



VICTORY

Site-Plan: Overview Comparison



VICTORY

Site-Plan: Precedent



Richard Morris Hunt Memorial at E 70th Street and Fifth Avenue



Richard Morris Hunt Memorial (detail) at E 70th Street and Fifth Avenue

VICTORY

Site-Plan: Precedent



Frederick Douglass Memorial
Imagine
U.S.S. Maine National Monument
Literary Walk Restoration Marker

VICTORY

Site-Plan: Precedent



Romeo and Juliet, 1978
 Group of Bears, 1990
 Duke Ellington Memorial, 1997
 Women's Rights Pioneers Monument, 2020

Previous Page:
 Frederick Douglass Memorial, 2011
 Imagine, 1985

VICTORY

Site-Plan: Gate

The 1.5-ton wrought-iron gate will be fabricated in one piece: The two side scrolls will be not be mechanically fastened to the landmarked wall. The design will have pickets with only a 3.5" gap up to 4' H. Decorative spikes have been designed into the base to obstruct any foothold. The gate will have flush ground welds, ground smooth. The color will be a brushed semi-gloss black finish. Eight (8) vertical rods will extend to embed in the concrete foundation and will be treated to resist corrosion.



3.5" Picket Gap and Decorative Spikes to Prevent Climbing

16'-10"

3.5"



VICTORY

Rear View

The Central Park Conservancy will lead the effort on the horticulture treatment behind the gate so that it is in line with the broader park planning scheme.

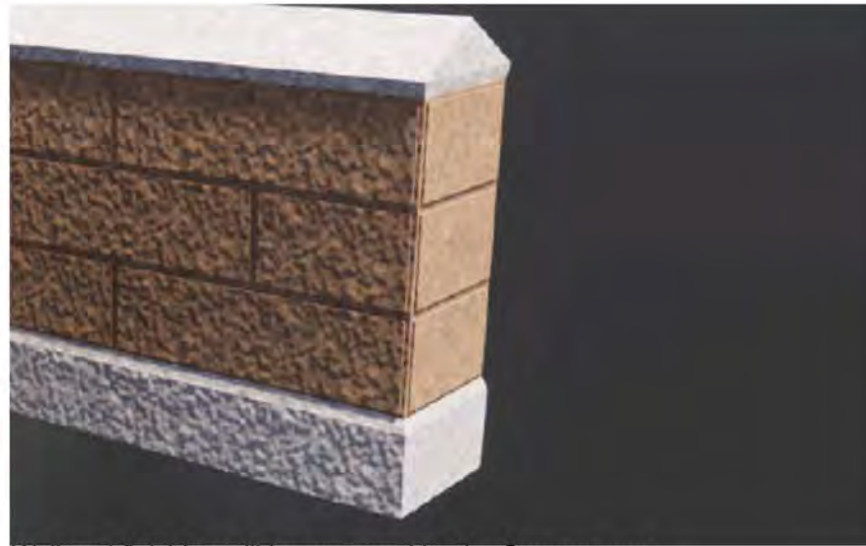


VICTORY

Site Plan: End-Cap Design



Current wall condition.



Wall-end finishing will be managed by the Conservancy.



Wall-end finishing will be designed to be similar to Children's Gate at 76th Street and Fifth Avenue.

VICTORY

Site Plan: End-Cap Design



Entrance at E 97th Street and Fifth Avenue



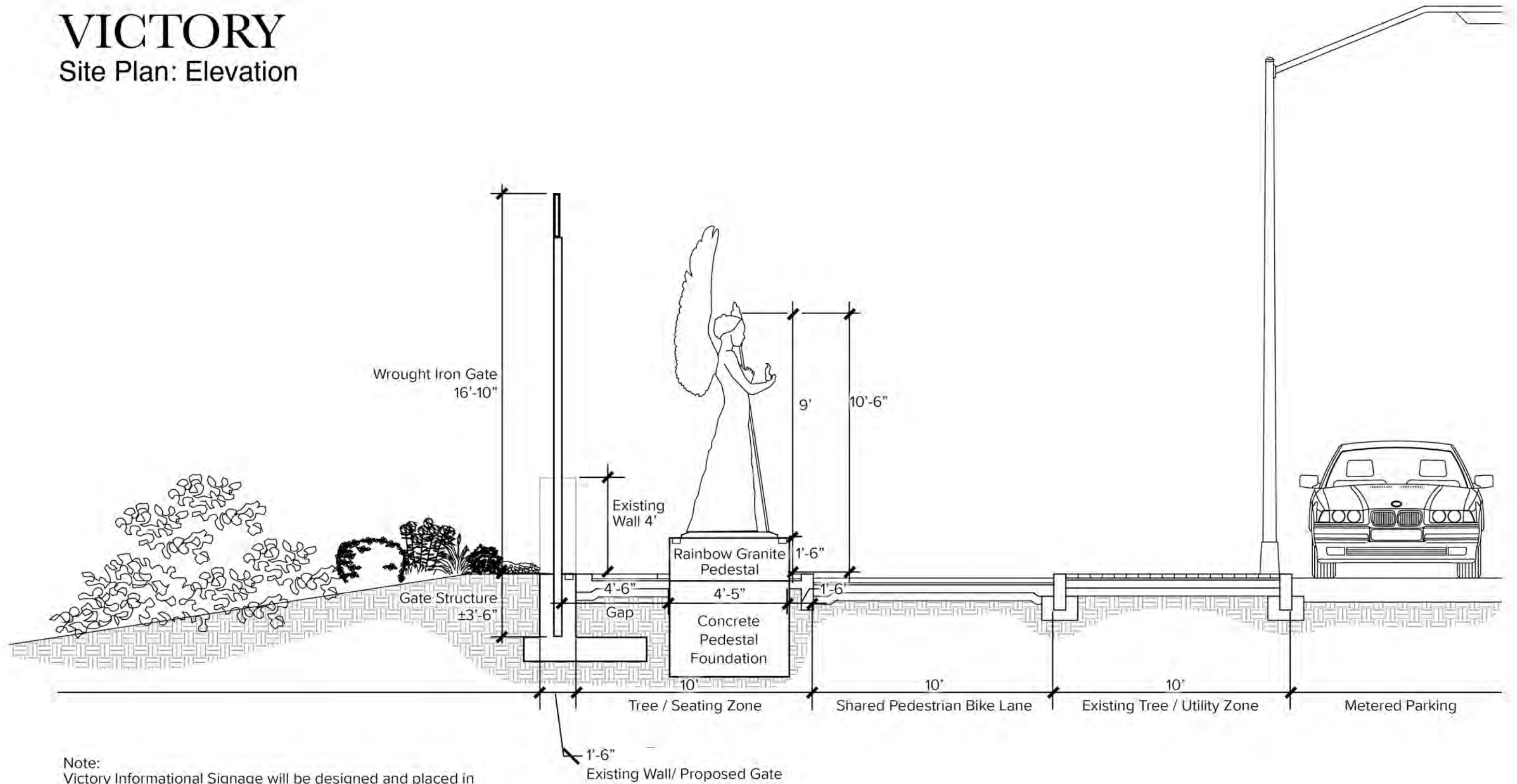
New ADA wall entrance at E 64th Street and Fifth Avenue



End treatment by CPC on new entrance at E 64th Street

VICTORY

Site Plan: Elevation



VICTORY

Site Plan: Conceptual Design

Transforming the experience of place informs viewers that artistry is a powerful and useful tool of social transformation; one capable of condensing our thoughts, distilling our minds, and renewing our hopes and aspirations.



VICTORY

May 6, 2025
Public Hearing

The current proposal is:

Preservation Department – Item 1, LPC-25-07995

Central Park – Scenic Landmark Borough of Manhattan

To testify virtually, please join Zoom

Webinar ID: 160 059 3679

Passcode: 131371

By Phone: 646-828-7666 (NY)

833-435-1820 (Toll-free)

833-568-8864 (Toll-free)

Note: If you want to testify virtually on an item, join the Zoom webinar at the agenda's "Be Here by" time (about an hour in advance). When the Chair indicates it's time to testify, "raise your hand" via the Zoom app if you want to speak (*9 on the phone). Those who signed up in advance will be called first.

VICTORY

Appendix

VICTORY

Appendix



Vanderbilt Gates, Conservatory Garden, Central Park



Decorative wrought iron, Peter Simmons, 19th century,
Smithsonian National Museum of African American
History and Culture



Philip Simmons, Sword Gate, Charleston, SC



Solomon Williams, Laide Williams' Grave
Marker, Cane River Creole National Historical
Park

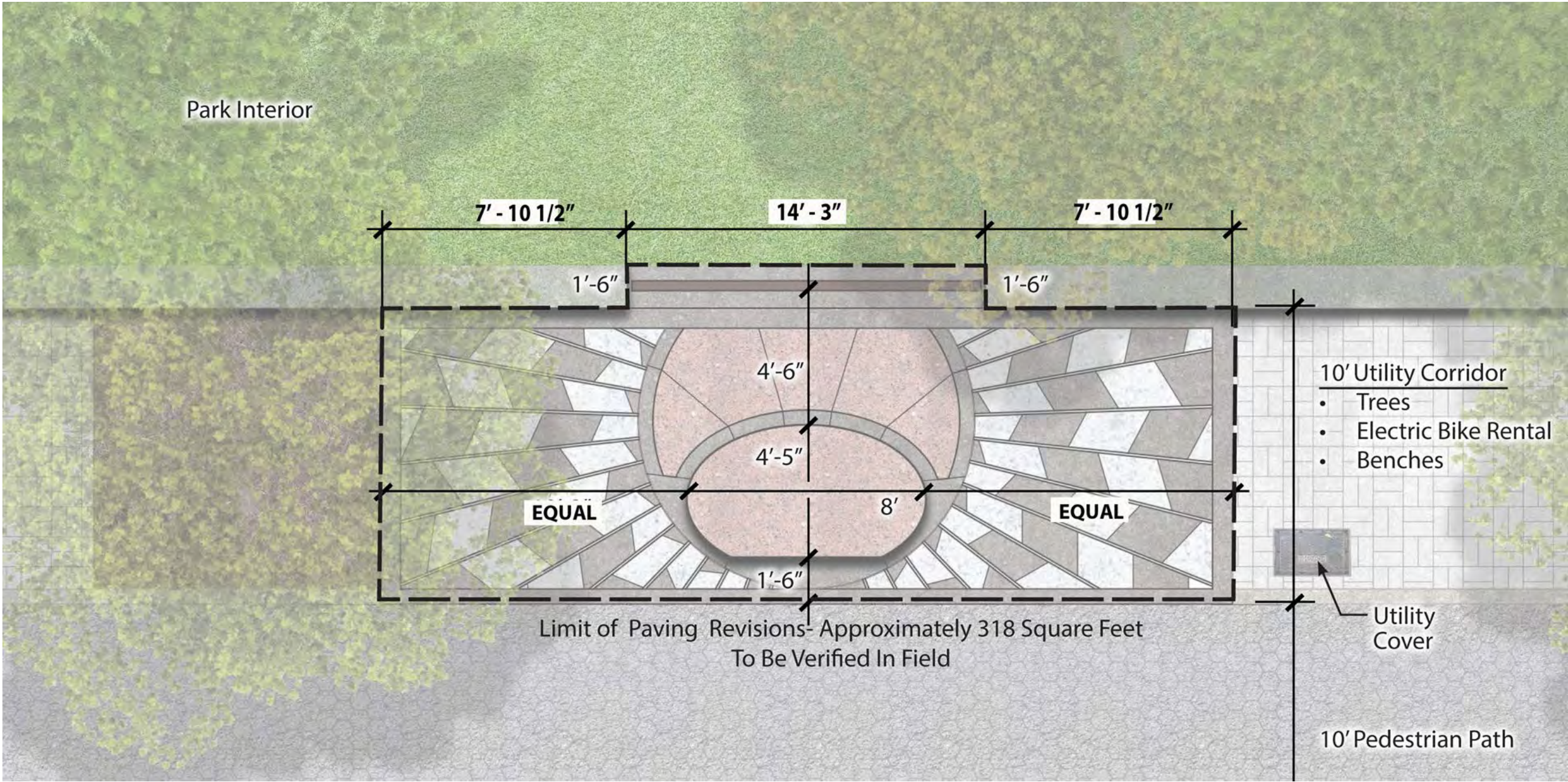
VICTORY

Appendix



VICTORY

Appendix



VICTORY

Appendix



Albert Thorvaldsen



The Indian Hunter



Arthur Brisbane



Victor Herbert



King Jagiello



Friedrich Von Schiller



Jose Julian Marti



Jose de San Martin

May 6, 2025
Public Hearing

The current proposal is:

Preservation Department – Item 1, LPC-25-07995

Central Park – Scenic Landmark Borough of Manhattan

To testify virtually, please join Zoom

Webinar ID: 160 059 3679

Passcode: 131371

By Phone: 646-828-7666 (NY)

833-435-1820 (Toll-free)

833-568-8864 (Toll-free)

Note: If you want to testify virtually on an item, join the Zoom webinar at the agenda's "Be Here by" time (about an hour in advance). When the Chair indicates it's time to testify, "raise your hand" via the Zoom app if you want to speak (*9 on the phone). Those who signed up in advance will be called first.