

The current proposal is:

Preservation Department – Item 2, LPC-25-03831

**1143 Fifth Avenue – Expanded Carnegie Hill Historic District
Borough of Manhattan**

Note: this is a Public Meeting item. No public testimony will be received today as the hearing on this item is closed.

1143 FIFTH AVENUE, NEW YORK, NY

ROOFTOP ADDITION AND FAÇADE RESTORATION
LANDMARKS PRESERVATION COMMISSION

LPC PRESENTATION | MARCH 4, 2025

HISTORIC PHOTOS



1143 FIFTH AVENUE C. 1940

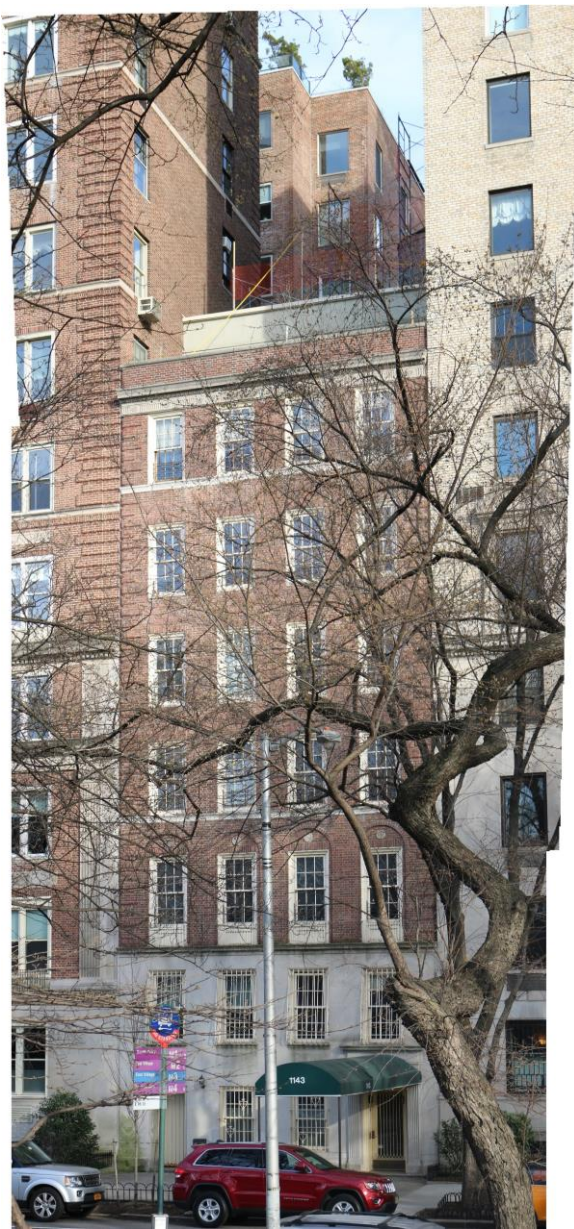


1143 FIFTH AVENUE C. 1924

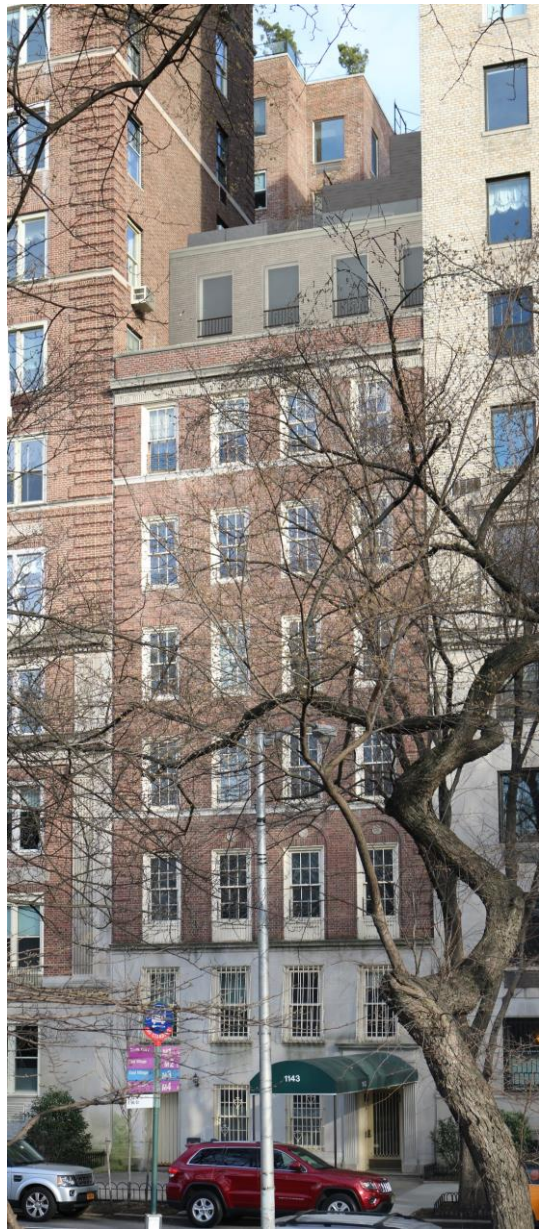


1143 FIFTH AVENUE C. 1940

PRE-CONSTRUCTION PHOTOS & APPROVED RENDERINGS



PRE-CONSTRUCTION
PHOTO



APPROVED RENDERING



PRE-CONSTRUCTION
PHOTO



APPROVED RENDERING

PRE-CONSTRUCTION PHOTOS



VIEW FROM CENTRAL PARK PATH
(PRE-CONSTRUCTION PHOTO)



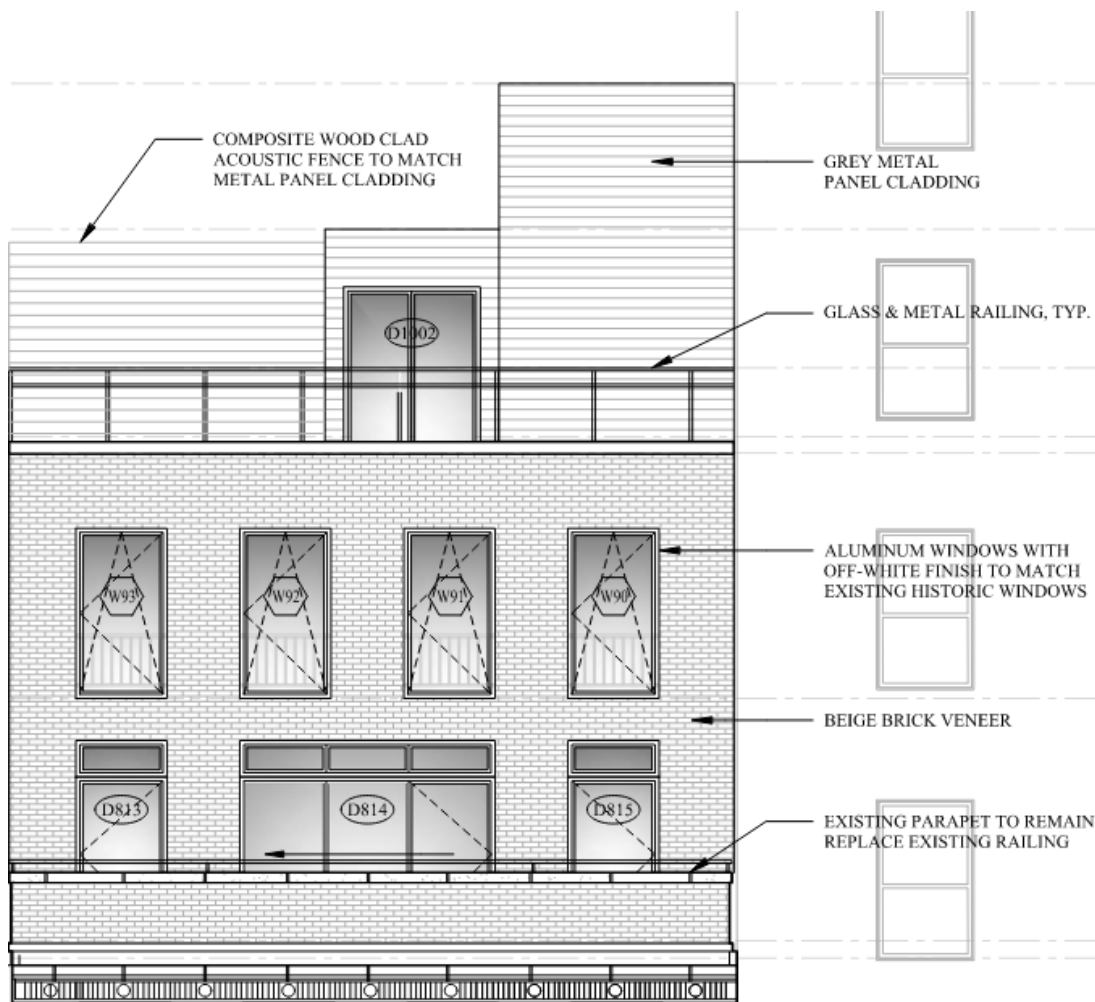
VIEW FROM 8TH FLOOR
(PRE-CONSTRUCTION PHOTO)



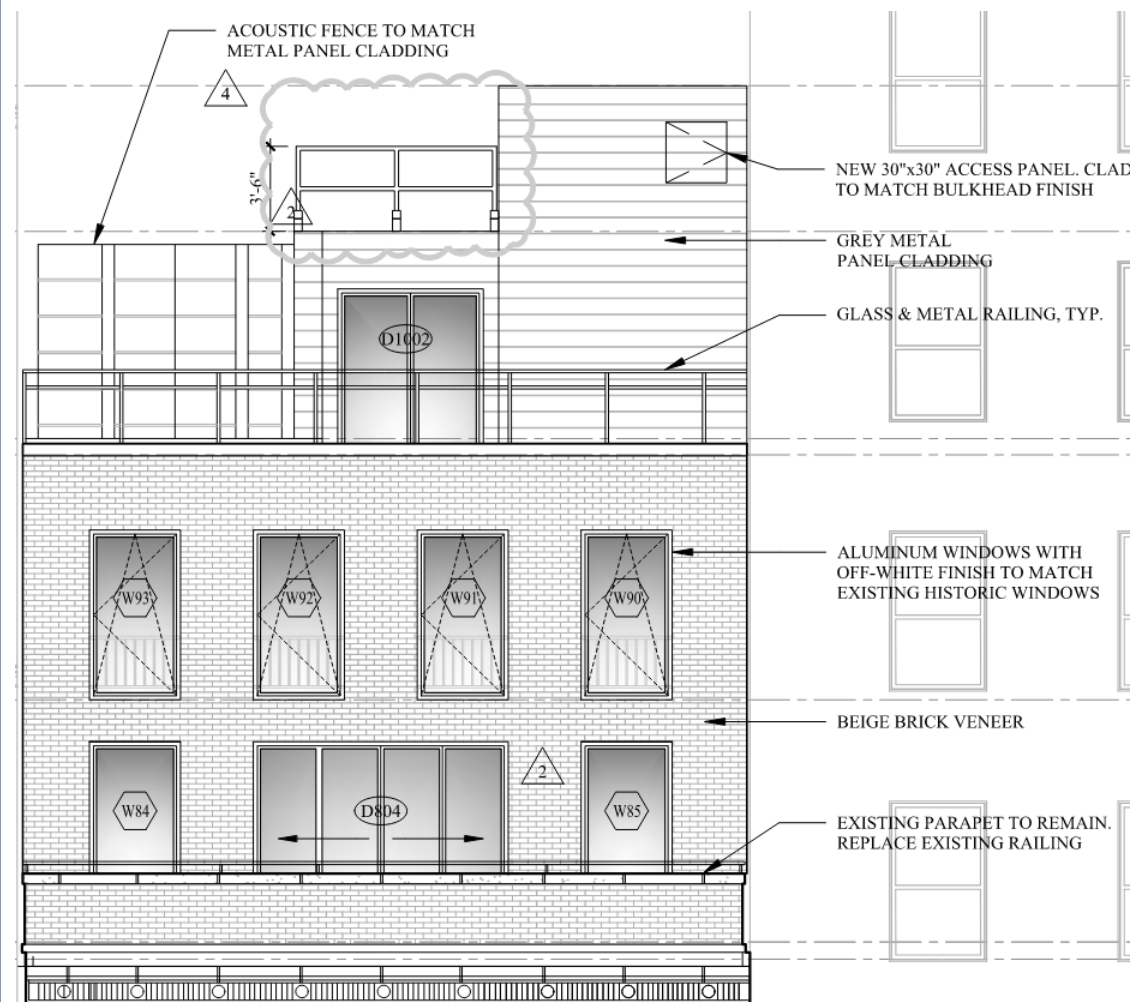
VIEW FROM 8TH FLOOR
(PRE-CONSTRUCTION PHOTO)

SUMMARY OF CHANGES FOR COMMISSION'S REVIEW

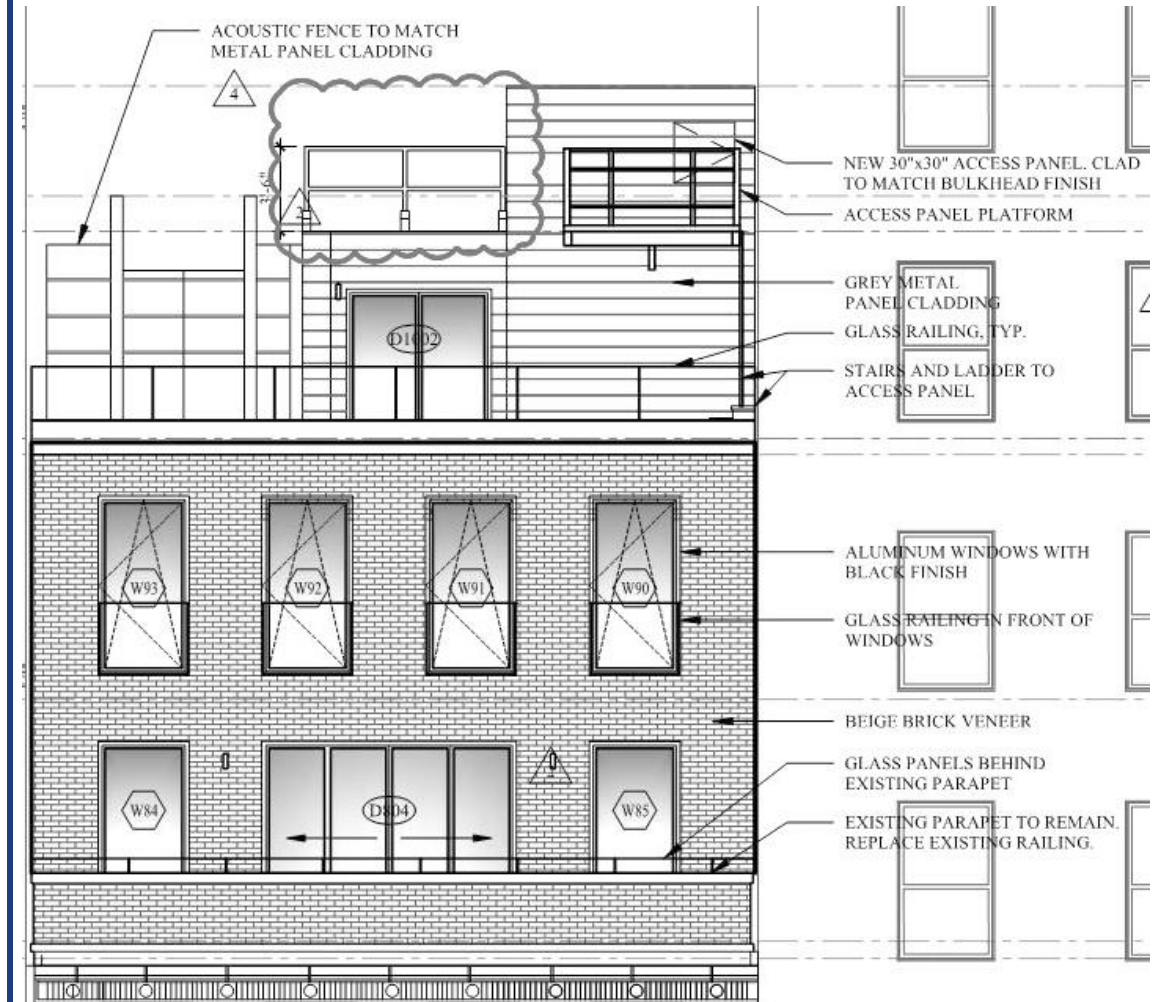
- 7TH & 8TH FLOOR PENTHOUSE WINDOWS & DOOR FINISH COLOR CHANGED FROM OFFWHITE TO BLACK.
- 8TH FLOOR WINDOW GUARDS CHANGED FROM METAL PICKET RAILING TO GLASS RAILING.
- 8TH FLOOR ROOF GLASS GUARDRAIL CONFIGURATION CHANGED SLIGHTLY. GLASS GUARDRAIL IS FRAMELESS WITH A METAL SHOE AT BASE. OVERALL GUARDRAIL IS A FEW INCHES CLOSER TO THE FRONT WALL OF THE PARAPET AND A FEW INCHES TALLER THAN ORIGINALLY APPROVED.
- 9TH FLOOR WINDOWS – THE SILLS OF THESE WINDOWS ARE APPROXIMATELY 12 INCHES ABOVE THE 9TH FLOOR LEVEL. THESE WINDOWS WERE ORIGINALLY APPROVED TO HAVE SILLS ALIGNED WITH THE FLOOR ELEVATION."



ORIGINALLY APPROVED BY COMMISSION



MOST RECENTLY APPROVED BY STAFF



AS-BUILT

WEST ELEVATION



AS BUILT ROOFTOP TERRACE GLASS RAILING

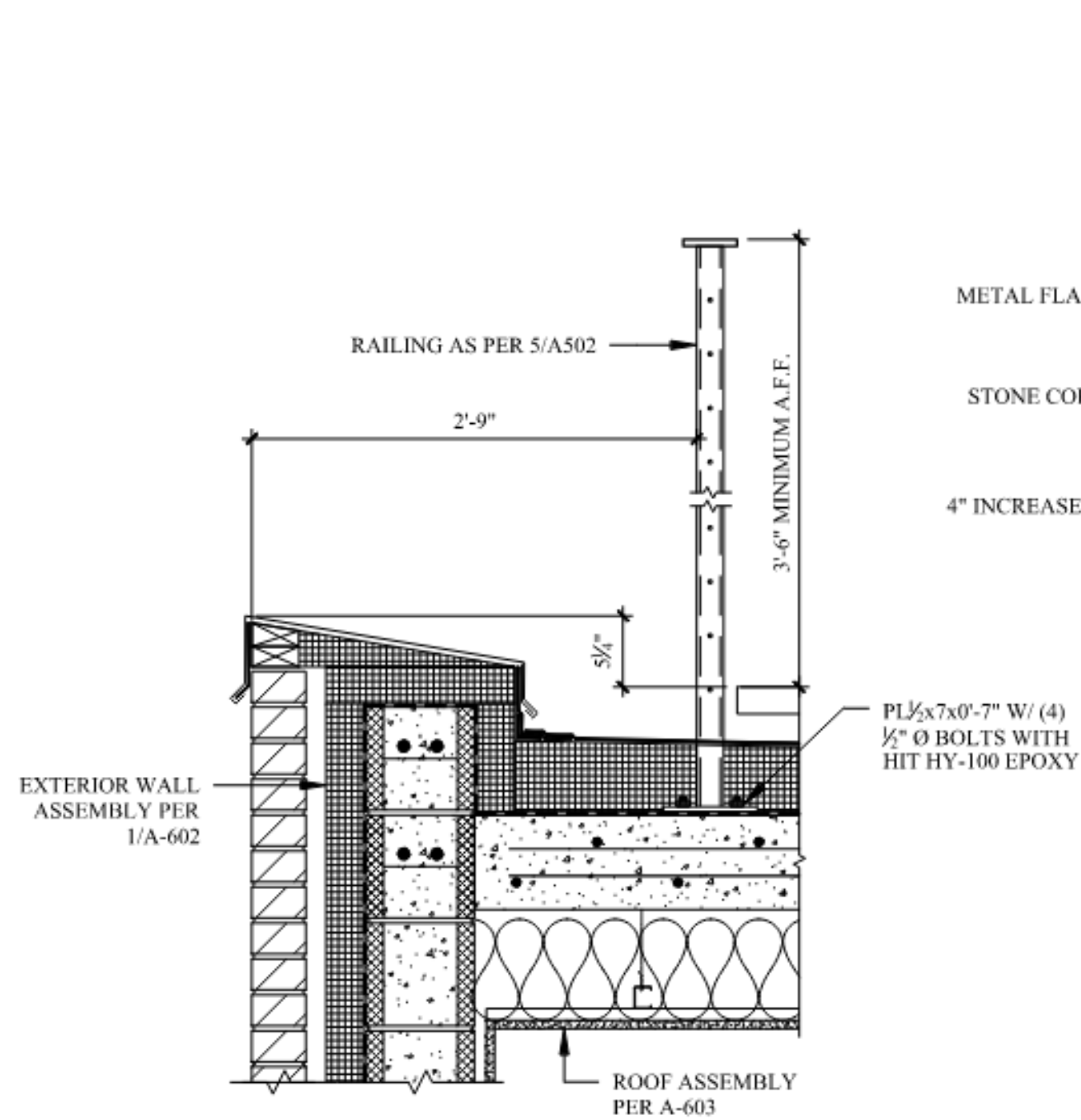


AS BUILT STONE TILE PLANTER AT BASE OF RAILING

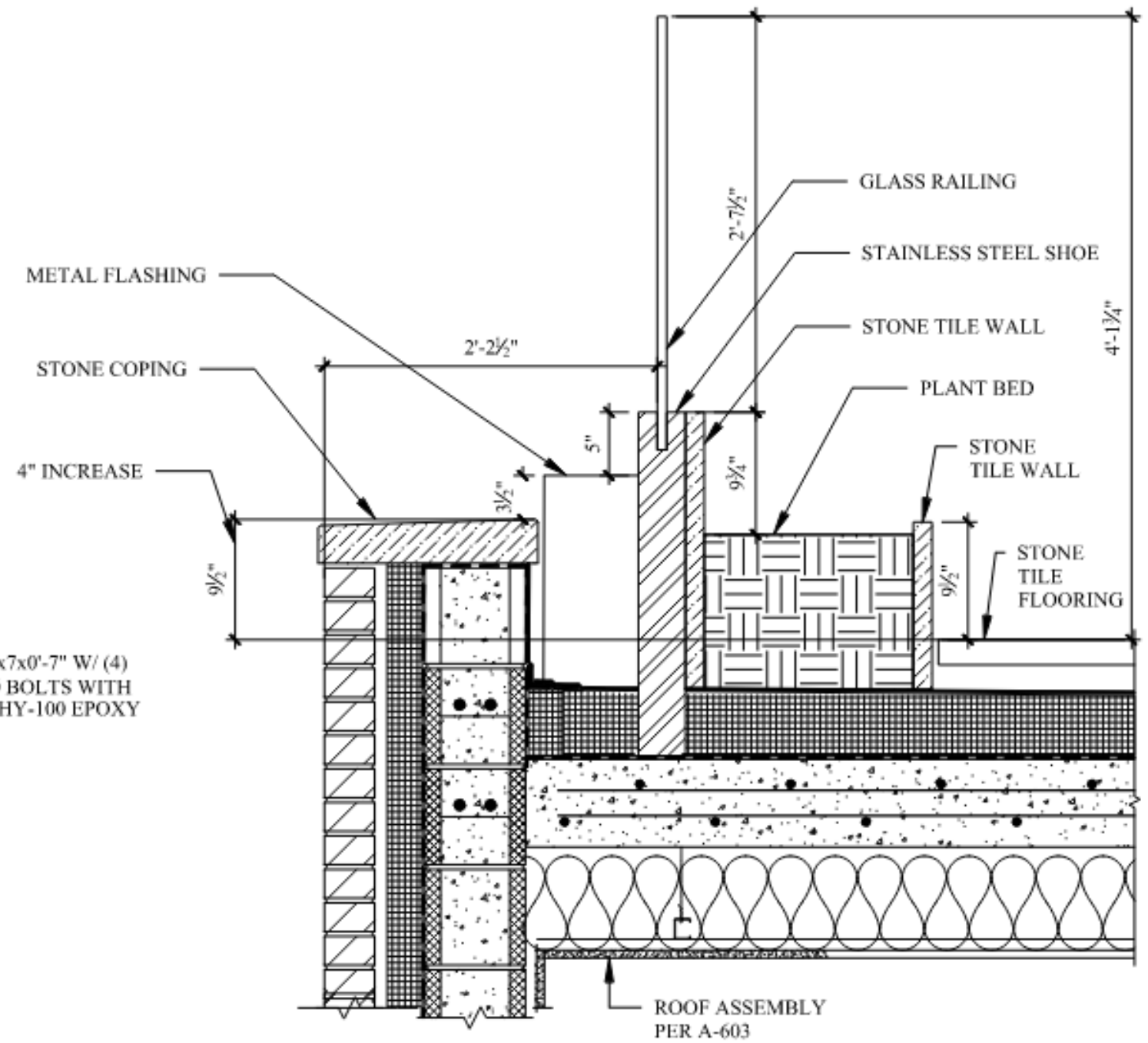


AS BUILT STAINLESS STEEL SHOE AND GLASS PANELS

ROOFTOP TERRACE GLASS RAILING



PROPOSED PENTHOUSE RAILING DETAIL

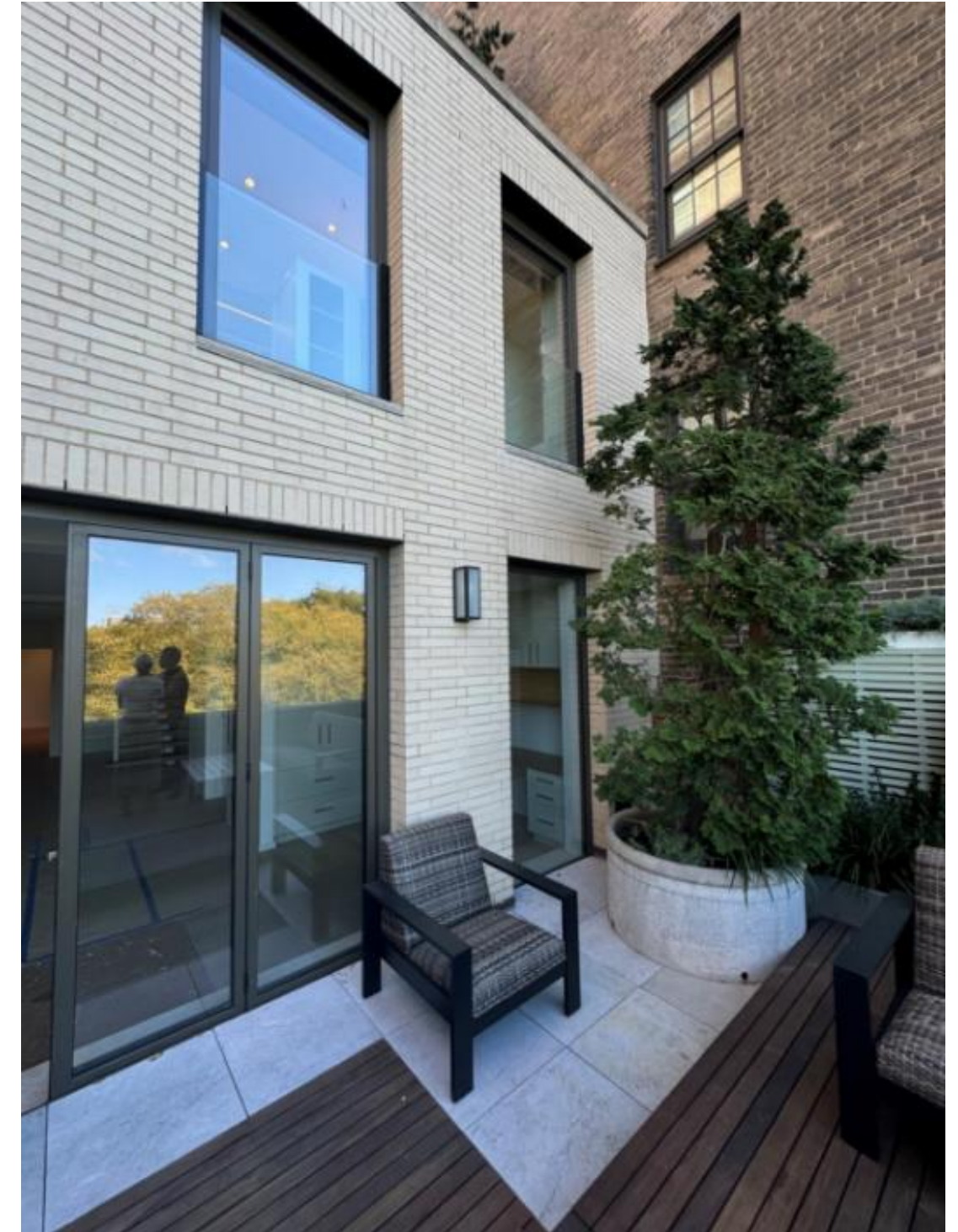


AS- BUILT PENTHOUSE RAILING DETAIL

ROOFTOP TERRACE GLASS RAILING DETAIL

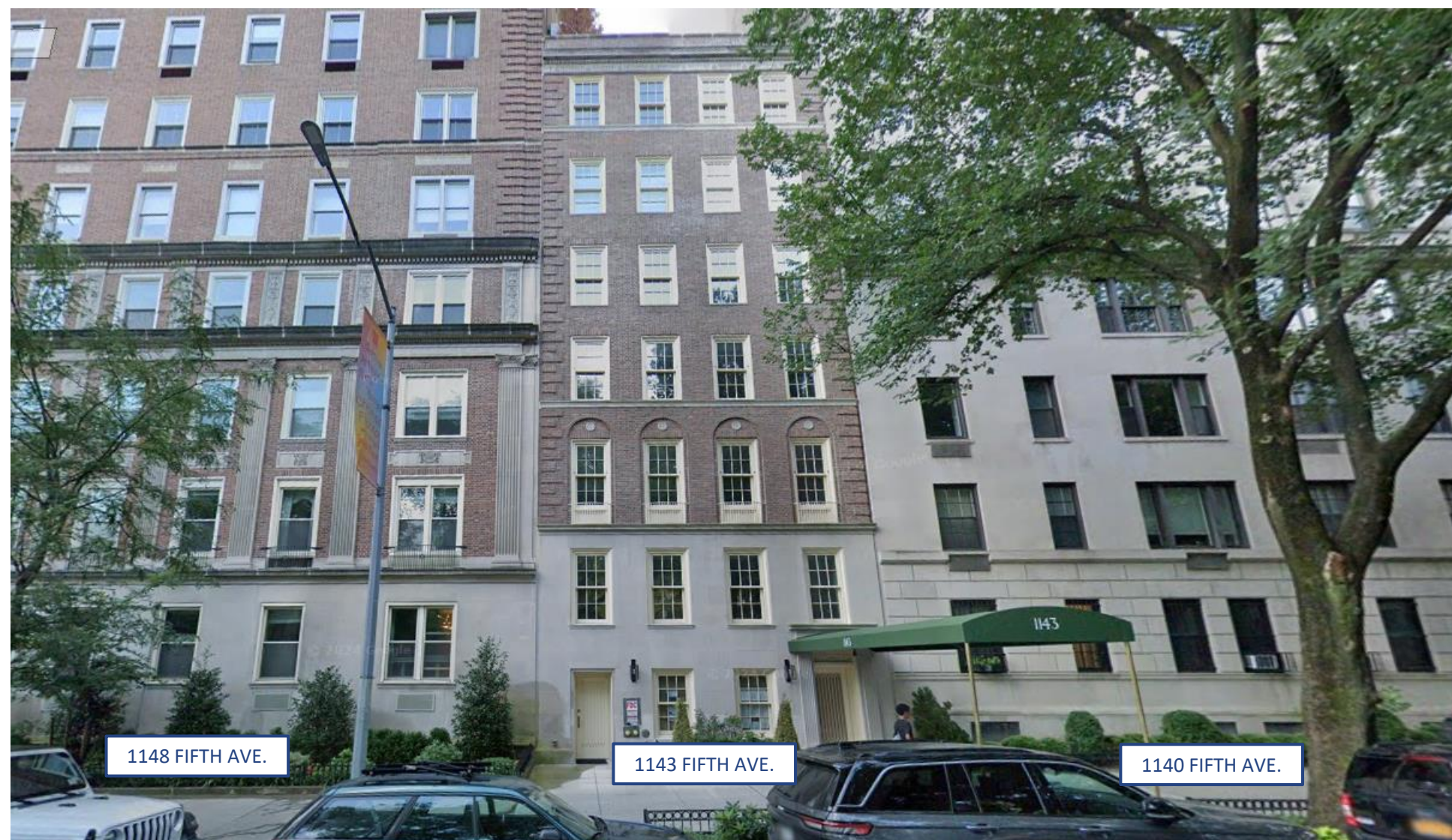


AS BUILT PENTHOUSE WINDOWS WITH BLACK TRIM



AS BUILT PENTHOUSE WINDOWS WITH GLASS RAILING

PENTHOUSE GLASS RAILING LOCATED IN
FRONT OF 8TH FLOOR WINDOWS



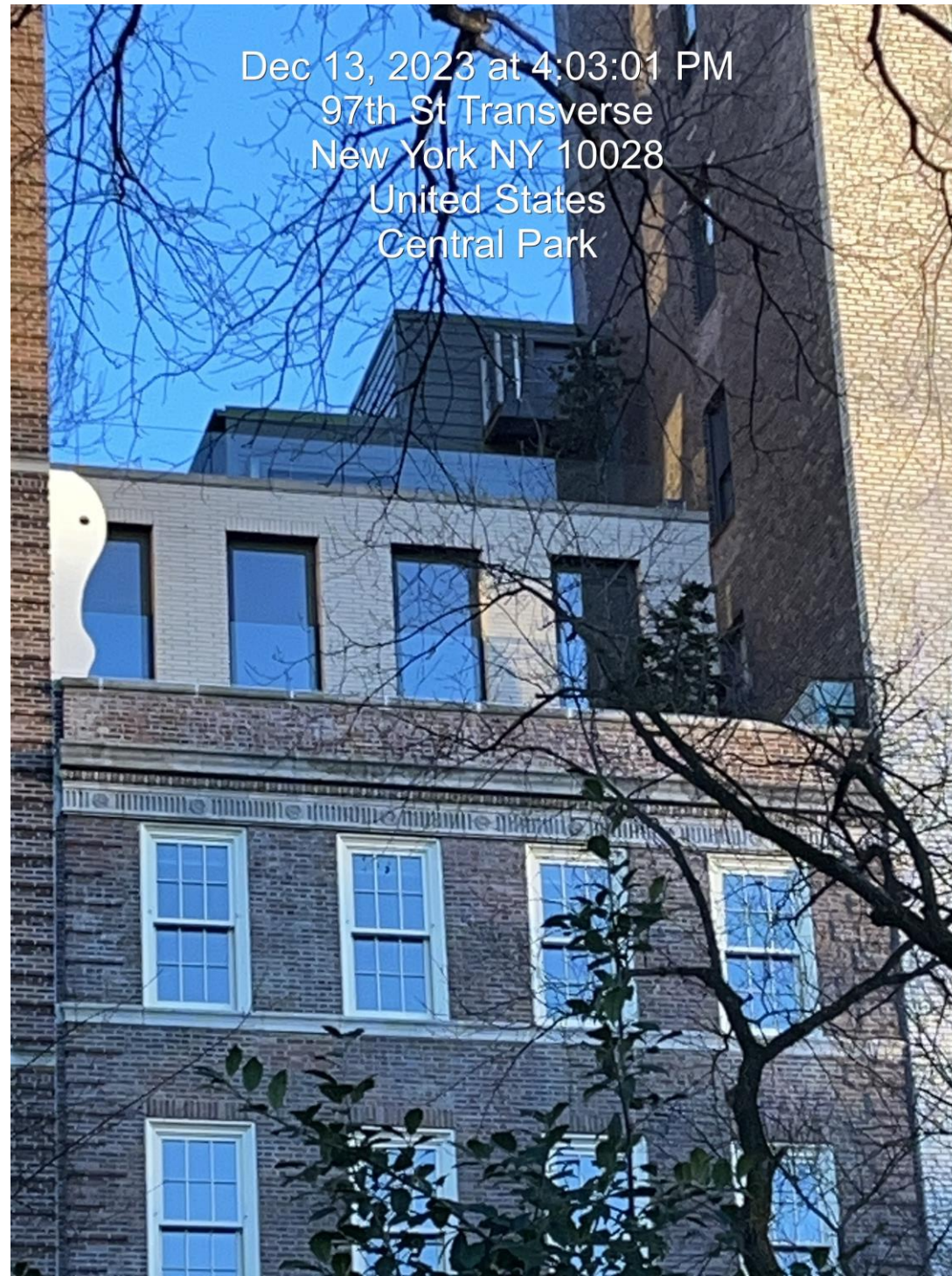
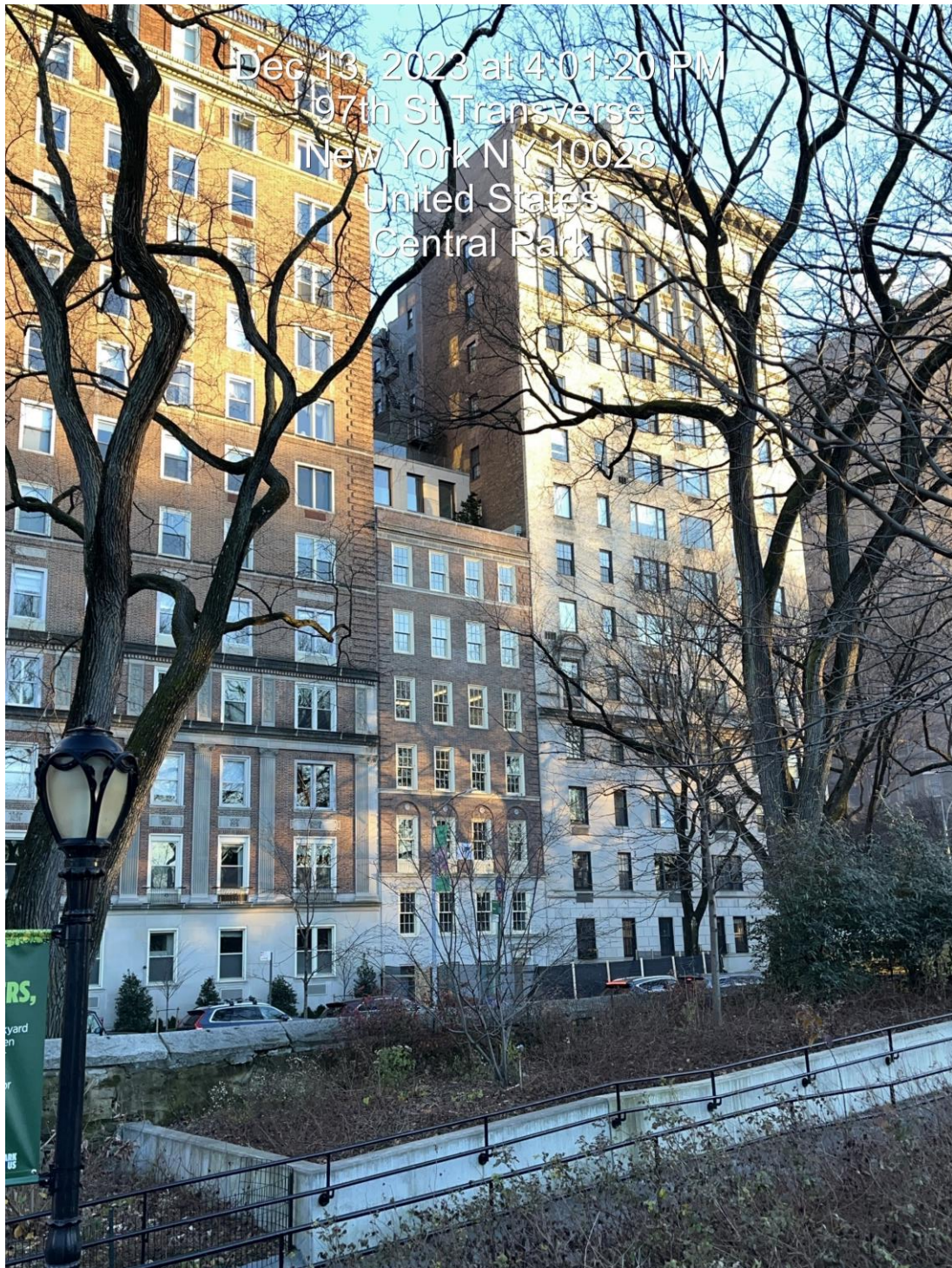
FRONT ELEVATION WITH NEIGHBORING BUILDINGS



RECENTLY REPLACED WINDOWS AT 1140 5TH AVE
- SIMILAR COLOR TO WINDOWS INSTALLED AT
PENTHOUSE LEVEL AT 1143 5TH AVE.



WEST FAÇADE OF BUILDING
FROM 5TH AVENUE



AS BUILT PHOTOS - WEST FAÇADE OF BUILDING
 FROM 5TH AVENUE (WINTER) AND CENTRAL PARK



AS BUILT PHOTOS - WEST FAÇADE OF BUILDING
FROM 5TH AVE AND CENTRAL PARK (SUMMER)



APPROVED RENDERING



AS BUILT CONDITION



APPROVED RENDERING



AS BUILT CONDITION

The current proposal is:

Preservation Department – Item 2, LPC-25-03831

**1143 Fifth Avenue – Expanded Carnegie Hill Historic District
Borough of Manhattan**

Note: this is a Public Meeting item. No public testimony will be received today as the hearing on this item is closed.