

March 11, 2025
Public Hearing

The current proposal is:

Preservation Department – Item 2, LPC-25-07290

207 West 151st Street – Harlem River Houses – Individual Landmark Borough of Manhattan

To testify virtually, please join Zoom

Webinar ID: 160 315 0703

Passcode: 831604

By Phone: 646-828-7666 (NY)

833-435-1820 (Toll-free)

833-568-8864 (Toll-free)

Note: If you want to testify virtually on an item, join the Zoom webinar at the agenda's "Be Here by" time (about an hour in advance). When the Chair indicates it's time to testify, "raise your hand" via the Zoom app if you want to speak (*9 on the phone). Those who signed up in advance will be called first.



Harlem River Houses Artwork & Signage

March 11, 2025





Site Map
NYCity Map, 2020



Harlem River Houses Aerial

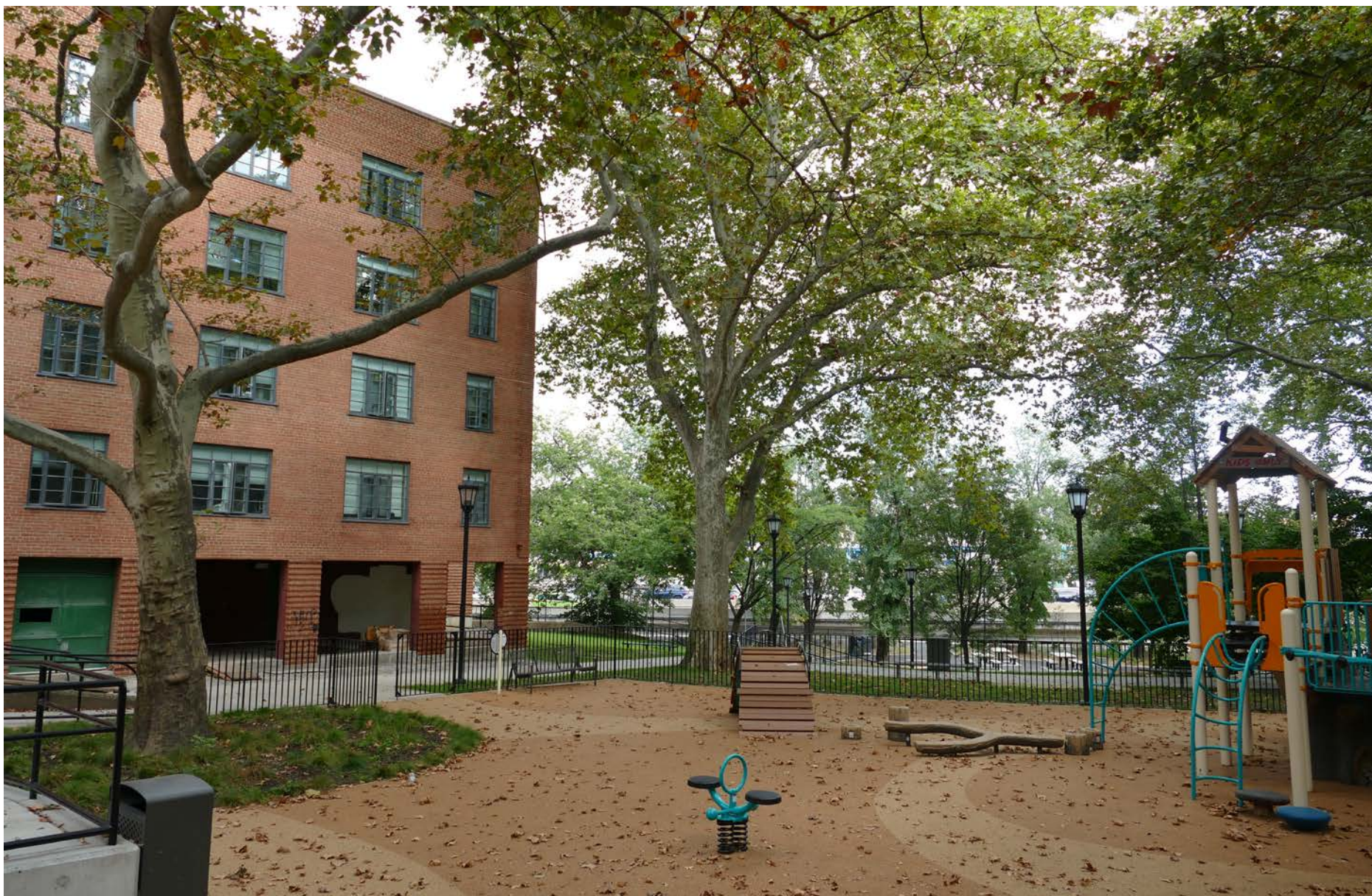






Harlem River Houses
Site Restoration Update





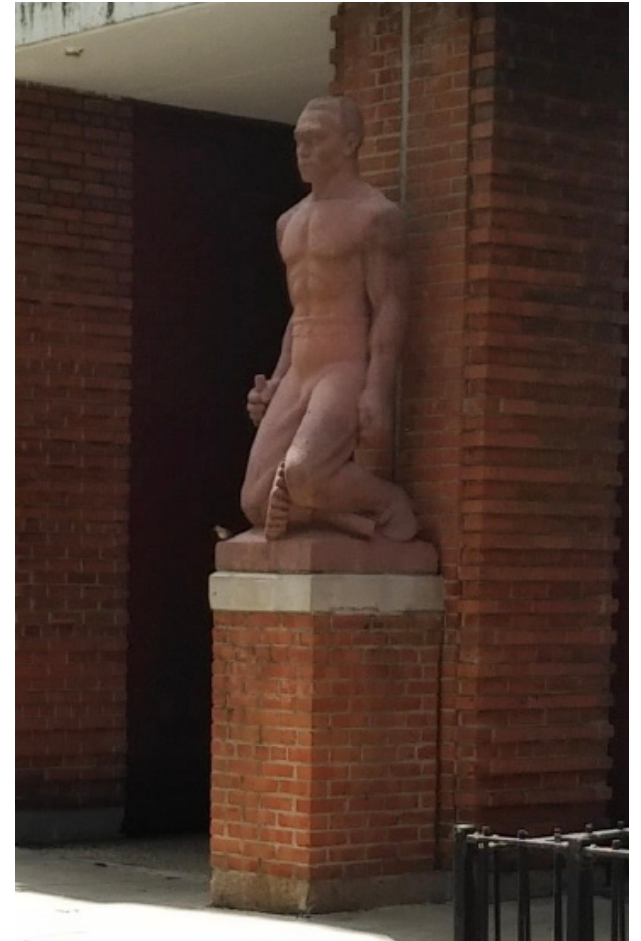




“Mother and Child with Dog”
Heinz Warneke assisted by T. Barbarossa, R. Barthe, and F. Steinberger



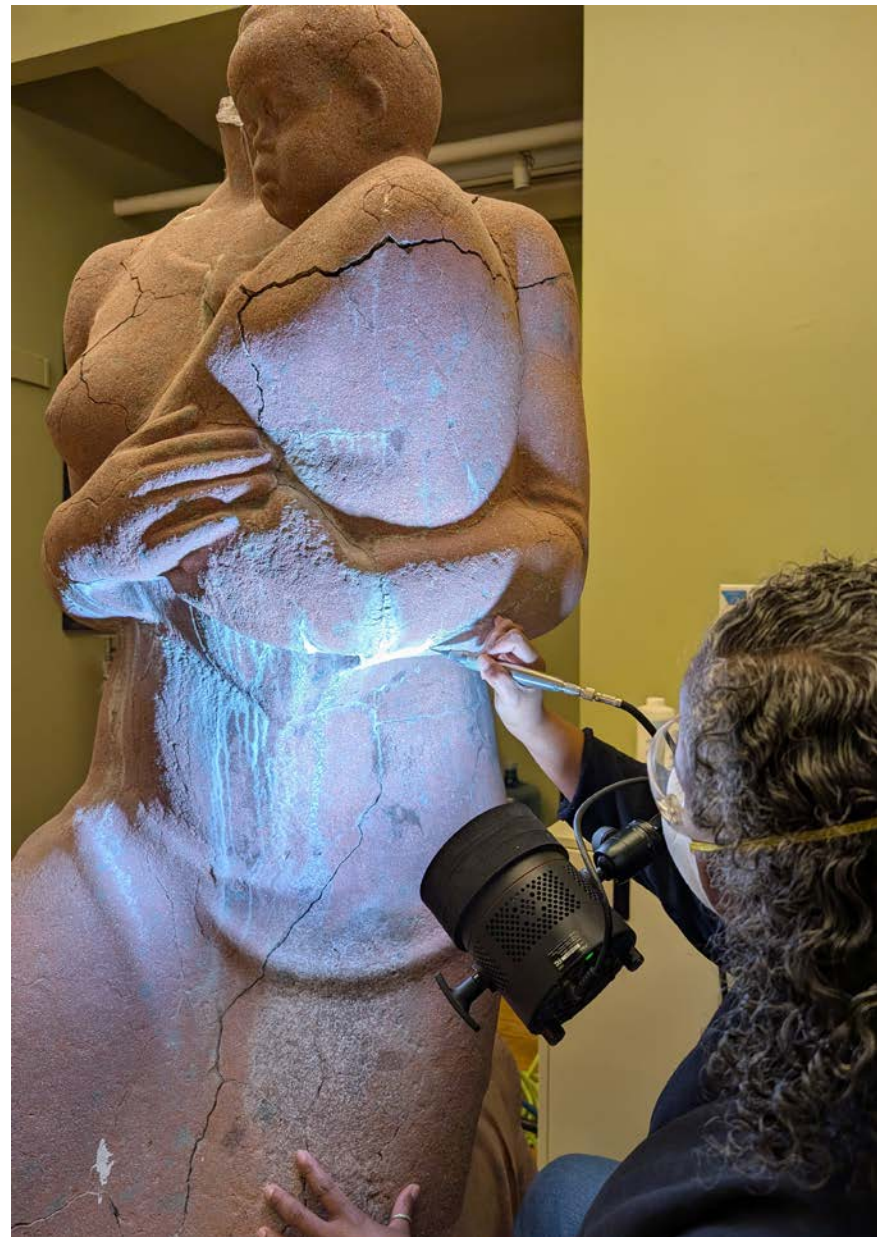
“Two Bear Cubs”
Heinz Warneke assisted by T. Barbarossa, R. Barthe, and F. Steinberger



“Black Laborer”
Heinz Warneke assisted by T. Barbarossa, R. Barthe, and F. Steinberger

Harlem River Houses

Existing Conditions - Historic Sculptures





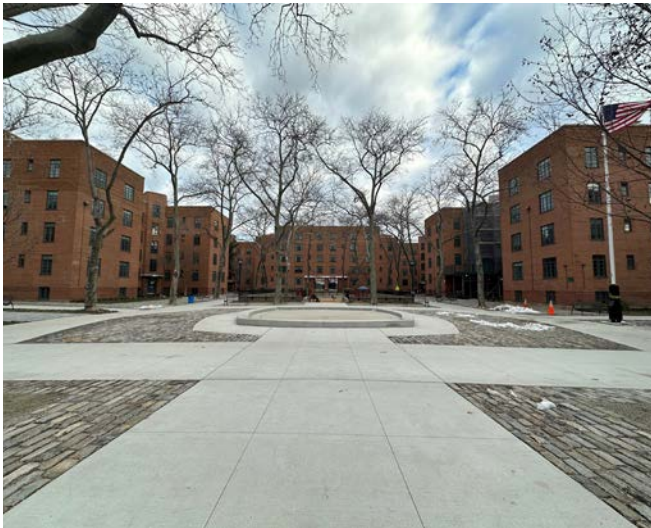
Typical breezeway



151st Street breezeway - West wall



153rd Street breezeway - East wall



Fountain



151st Street breezeway - East wall

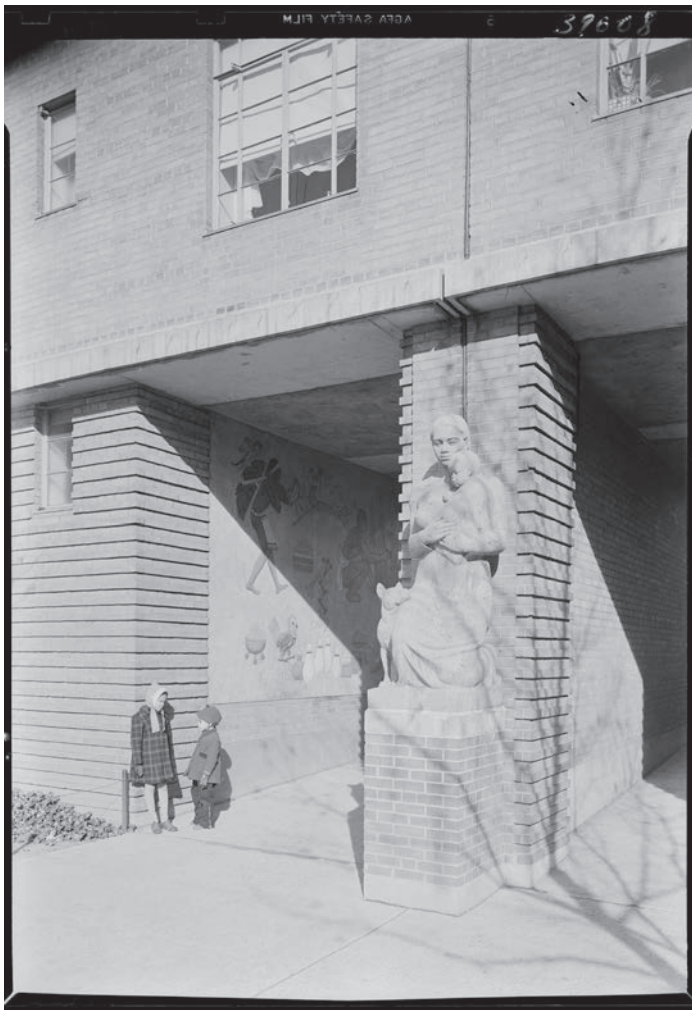


153rd Street breezeway - West wall

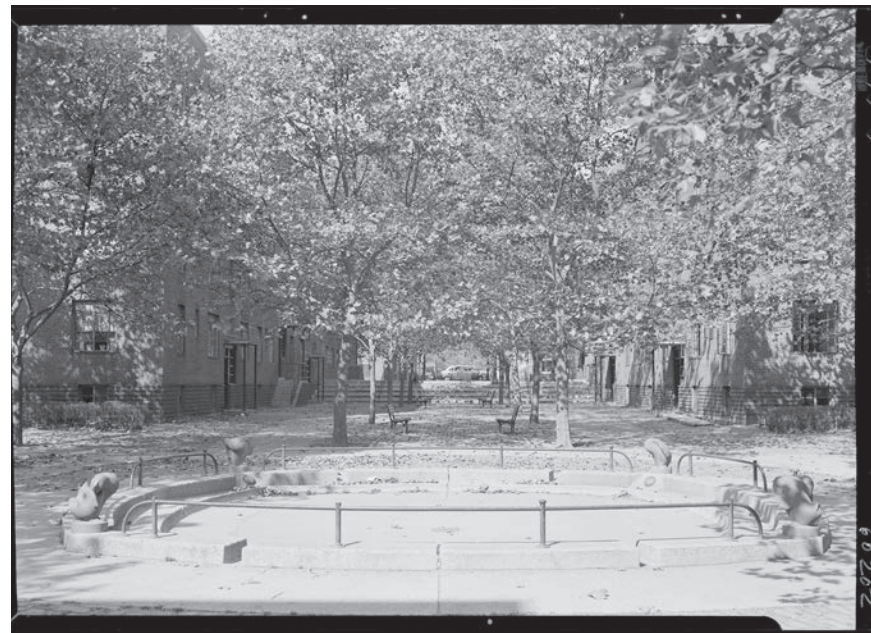
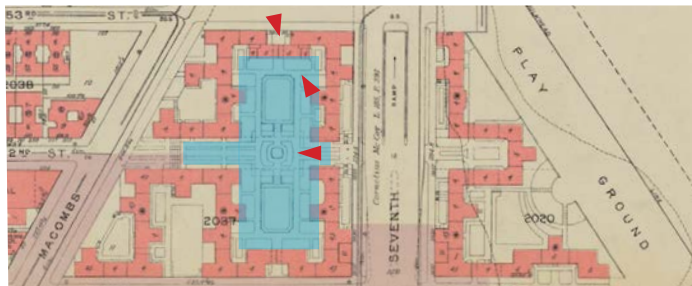
Harlem River Houses

Existing Conditions





Sculpture by Heinz Warneke, outside Building 1, view north
NYCHA, c. 1937



A. Central Fountain, view west
NYCHA, c. 1937

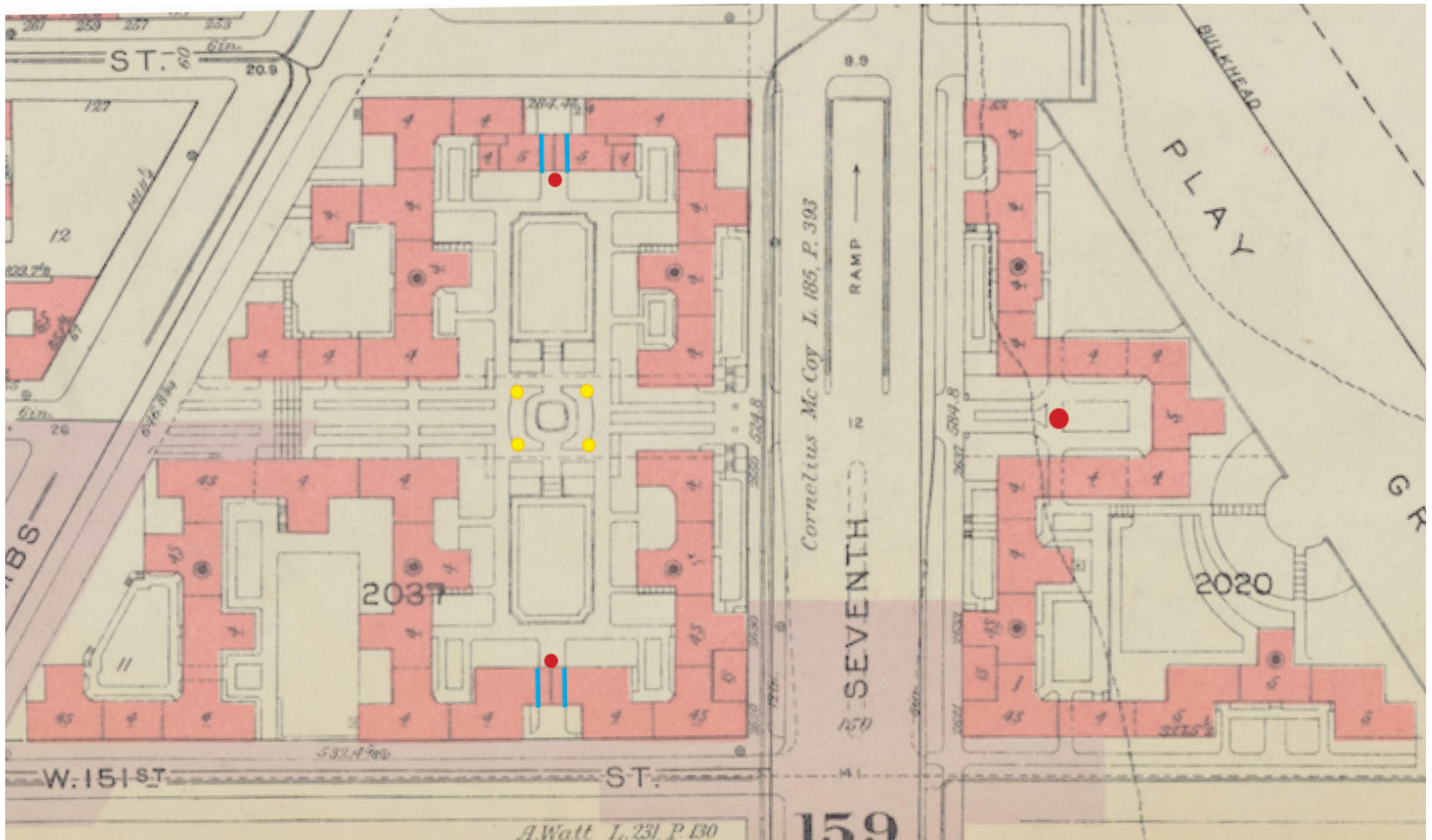


Breezeway Mural
NYCHA, c. 1937

Harlem River Houses

Historic Artwork





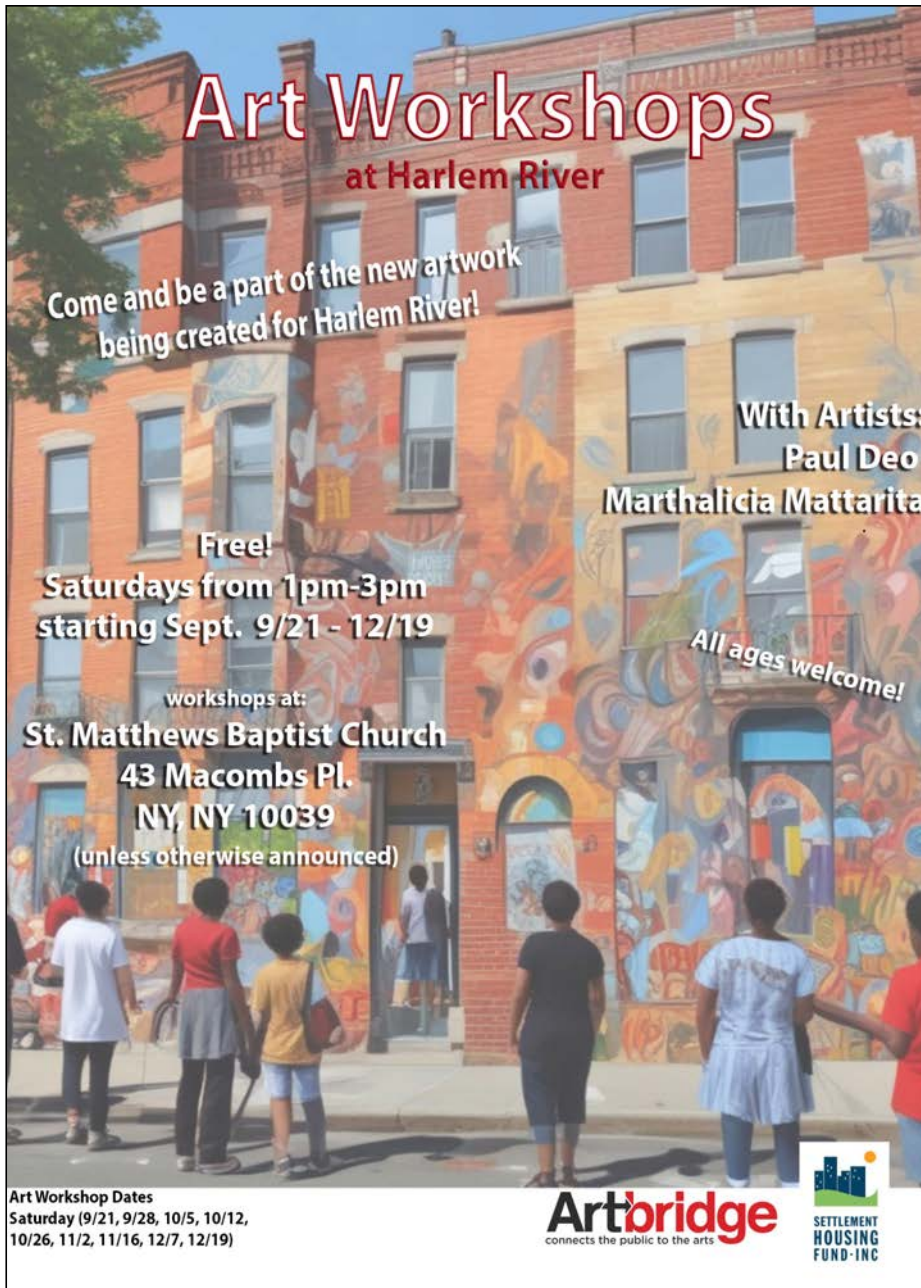
Key:

- Proposed murals
- Restored sculptures
- Proposed sculptures: Bronze busts (24") on 24" Belgian block plinths

Harlem River Houses

Proposed Artwork Locations





Art Workshops

at Harlem River

Come and be a part of the new artwork
being created for Harlem River!

With Artists:
Paul Deo
Marthalicia Mattarita

Free!
Saturdays from 1pm-3pm
starting Sept. 9/21 - 12/19

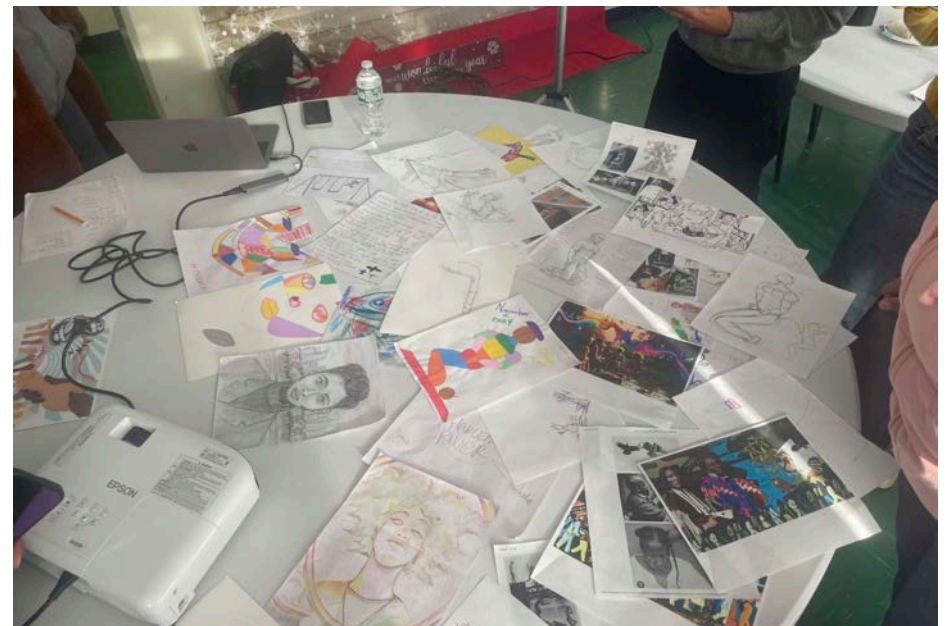
workshops at:
St. Matthews Baptist Church
43 Macombs Pl.
NY, NY 10039
(unless otherwise announced)

All ages welcome!

Art Workshop Dates
Saturday (9/21, 9/28, 10/5, 10/12,
10/26, 11/2, 11/16, 12/7, 12/19)

Artbridge
connects the public to the arts

**SETTLEMENT
HOUSING
FUND-INC**



Community Art Workshops with the Artists
SHF, 2024



Kim Dacres
Sculptor
HRH location of artwork: around fountain



Paul Deo
Muralist
HRH location of artwork: breezeway



Marthalicia Matarrita
Muralist
HRH location of artwork: breezeway

Harlem River Houses

Artists and Styles





Existing Fountain

Harlem River Houses

Existing Condition





Location and size of sculptures around foundation
(Design to be finalized)

Harlem River Houses

Proposed Sculptures





Location and size of sculptures around foundation
(Design to be finalized)



151st Street breezeway - Mural location and size
(Design to be finalized)





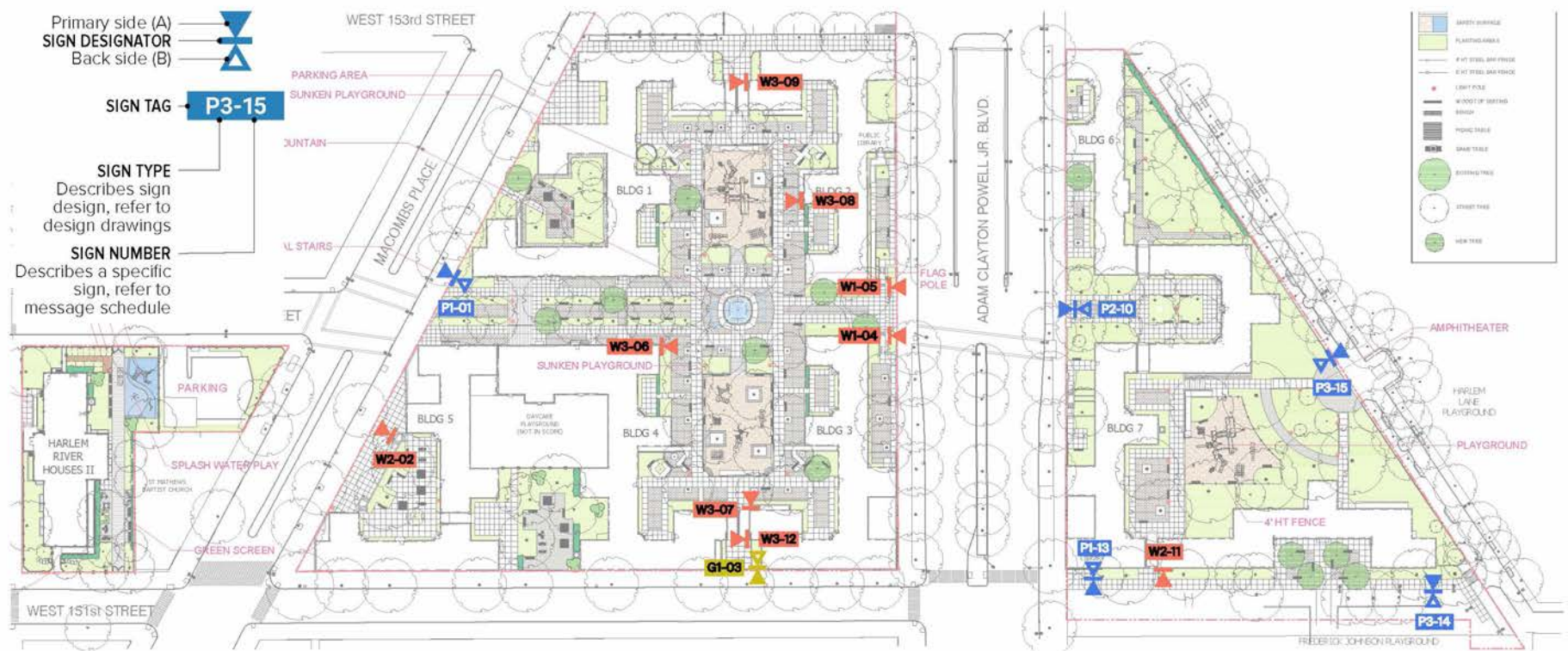
153rd Street breezeway - Mural location and size
(Design to be finalized)



Harlem River Houses

Proposed Murals





Type	Mounting	Panel Size	Qty.	Description
G1	Planter Mtd.	Large	1	Interpretive Panel, Large (Planter Mtd.)
P1	Post Mtd.	Large	2	Interpretive Panel, Large (Post Mtd.)
P2		Medium	1	Interpretive Panel, Medium (Post Mtd.)
P3		Small	2	Interpretive Panel, Small (Post Mtd.)
W1	Wall Mtd.	Large	2	Interpretive Panel, Large (Wall Mtd.)
W2		Medium	2	Interpretive Panel, Medium (Wall Mtd.)
W3		Small	5	Interpretive Panel, Small (Wall Mtd.)
Totals			15	

Sign Tag	Description	Panel Subject
G1-03	Interpretive Panel, Large (Planter Mtd.)	HRH Architectural Design significance
P1-01	Interpretive Panel, Large (Post Mtd.)	NYCHAs significance to NYC history, HRH in that history, timeline
P1-13	Interpretive Panel, Large (Post Mtd.)	Welcome, Pedestrian Mall + Sculpture
P2-10	Interpretive Panel, Medium (Post Mtd.)	Resident Amenities (Library, child care center, community room)
P3-14	Interpretive Panel, Small (Post Mtd.)	Tennis Courts, Arthur Ashe
P3-15	Interpretive Panel, Small (Post Mtd.)	Welcome, Site Overview + Robert Moses + Highway
W1-04	Interpretive Panel, Large (Wall Mtd.)	Resident and Community life
W1-05	Interpretive Panel, Large (Wall Mtd.)	Resident and Community life
W2-02	Interpretive Panel, Medium (Wall Mtd.)	Welcome, Site Overview
W2-11	Interpretive Panel, Medium (Wall Mtd.)	HRH in context of American History
W3-06	Interpretive Panel, Small (Wall Mtd.)	Hometown Heroes
W3-07	Interpretive Panel, Small (Wall Mtd.)	Sculptures
W3-08	Interpretive Panel, Small (Wall Mtd.)	Celebrities
W3-09	Interpretive Panel, Small (Wall Mtd.)	Historical Mural + New Mural, Resident Quotes
W3-12	Interpretive Panel, Small (Wall Mtd.)	Historical Mural + New Mural, Resident Quotes

Harlem River Houses

Interpretive Signage - Site Map



NOTES:

General Note:
All sign attachments to historic masonry are to be reversible and attached to mortar joints instead of brickwork.

- 1 - Sign Frame
1 1/2" thick aluminum frame;
mechanically fastened to mortar joints.
- 2 - Sign Panels
1/4" thick sign panel with color graphics; mounted to Sign Frame with z-clips, L-brackets and set screws.

- 3 - Sign Posts
1 1/2" thick aluminum frame;
bolted to concrete sidewalk or interior of masonry wall.
- 4 - Base Plate
Welded aluminum base plate;
bolted to epoxy anchors in the concrete sidewalk or embedded J-bolt anchors in poured concrete footings.

- 5 - Concrete Planter, Existing

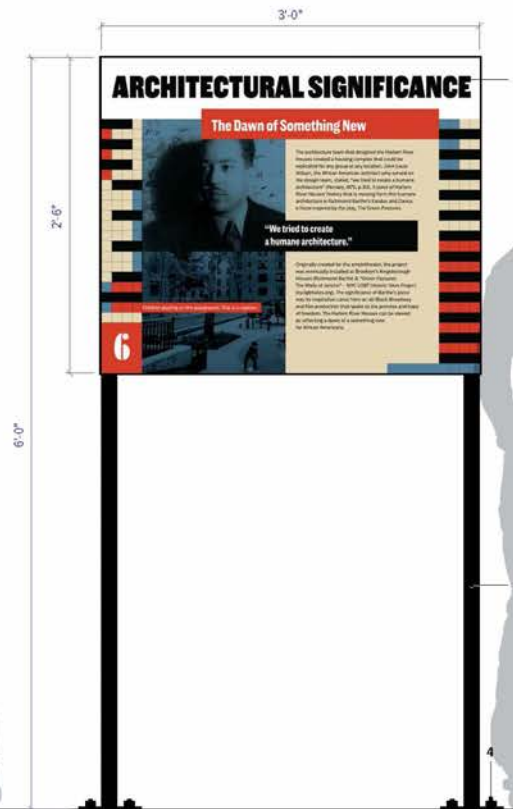
13'-4" 1/2"

1 Small Panel, Wall Mounted - Plan
1" = 1'-0"



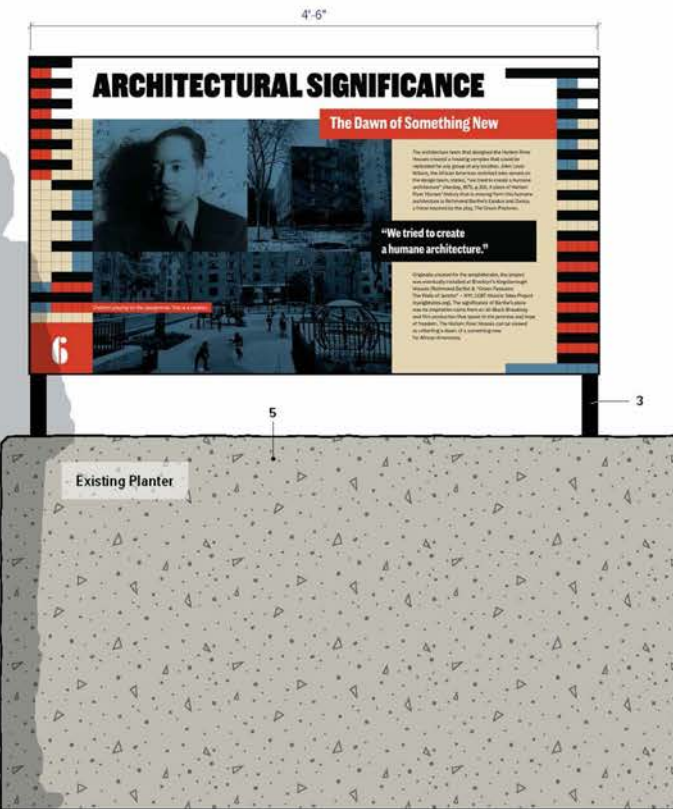
4 Small Panel, Wall Mounted - Elevation
1" = 1'-0"

2 Medium Panel, Post Mounted - Plan
1" = 1'-0"



5 Medium Panel, Post Mounted - Elevation
1" = 1'-0"

3 Large Panel, Planter Mounted - Plan
1" = 1'-0"



6 Large Panel, Planter Mounted - Elevation
1" = 1'-0"

Harlem River Houses

Interpretive Signage - Mounting

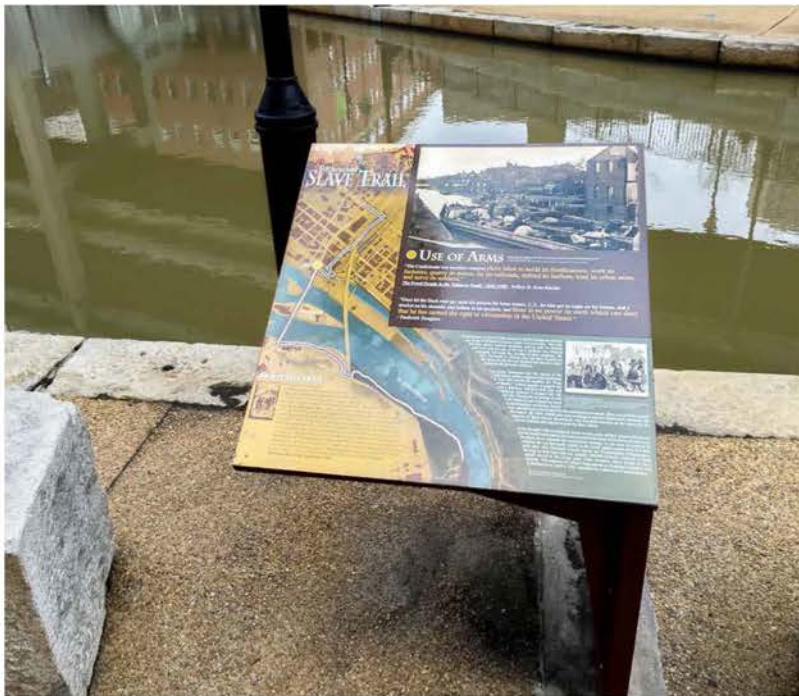




Harlem River Houses

Interpretive Signage - Exploded Axon





NOTES:

A porcelain enamel sign is a durable rolled iron or steel coated with a layer of colored powdered glass. This process involves fusing porcelain to the metal at high temperatures, resulting in a weather-resistant and vibrant finish that can withstand the elements without fading or rusting.



Harlem River Houses

Interpretive Signage - Finish Material



March 11, 2025
Public Hearing

The current proposal is:

Preservation Department – Item 2, LPC-25-07290

207 West 151st Street – Harlem River Houses – Individual Landmark Borough of Manhattan

To testify virtually, please join Zoom

Webinar ID: 160 315 0703

Passcode: 831604

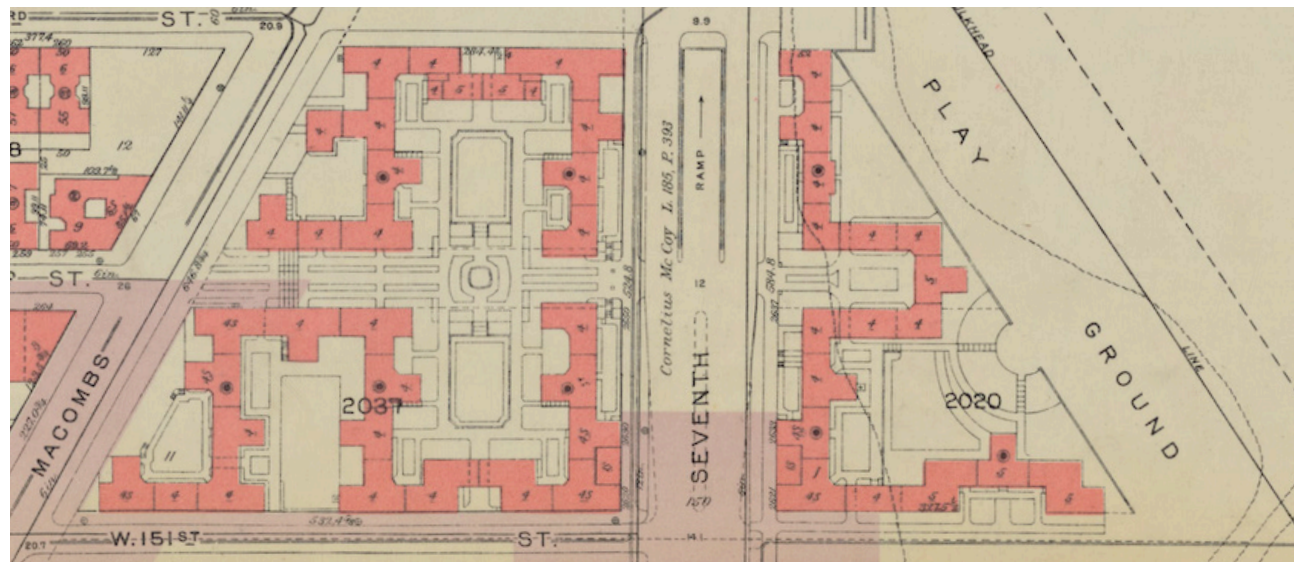
By Phone: 646-828-7666 (NY)

833-435-1820 (Toll-free)

833-568-8864 (Toll-free)

Note: If you want to testify virtually on an item, join the Zoom webinar at the agenda's "Be Here by" time (about an hour in advance). When the Chair indicates it's time to testify, "raise your hand" via the Zoom app if you want to speak (*9 on the phone). Those who signed up in advance will be called first.

Appendix



Bromley Map, 1955

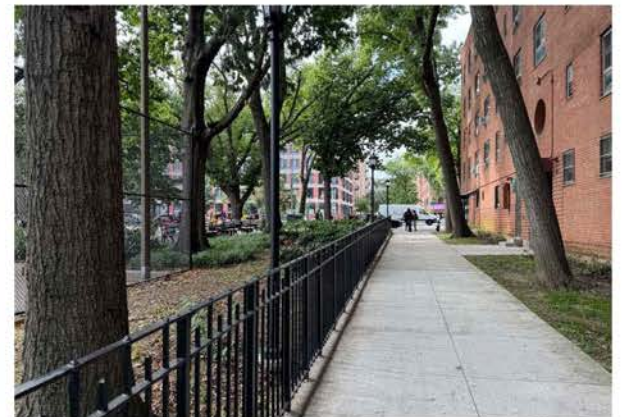


Rendering of Harlem River Houses, c. 1936-37
NYCHA

Harlem River Houses

Historic Maps







March 11, 2025
Public Hearing

The current proposal is:

Preservation Department – Item 2, LPC-25-07290

207 West 151st Street – Harlem River Houses – Individual Landmark Borough of Manhattan

To testify virtually, please join Zoom

Webinar ID: 160 315 0703

Passcode: 831604

By Phone: 646-828-7666 (NY)

833-435-1820 (Toll-free)

833-568-8864 (Toll-free)

Note: If you want to testify virtually on an item, join the Zoom webinar at the agenda's "Be Here by" time (about an hour in advance). When the Chair indicates it's time to testify, "raise your hand" via the Zoom app if you want to speak (*9 on the phone). Those who signed up in advance will be called first.