



Parks

VERDI SQUARE ACCESSIBLE PATH & WATER SERVICE INSTALLATION

LPC Presentation

Designer: Cameron Engineering an IMEG Company

Date: 02/11/2025

Total Budget: 873K, Mayoral

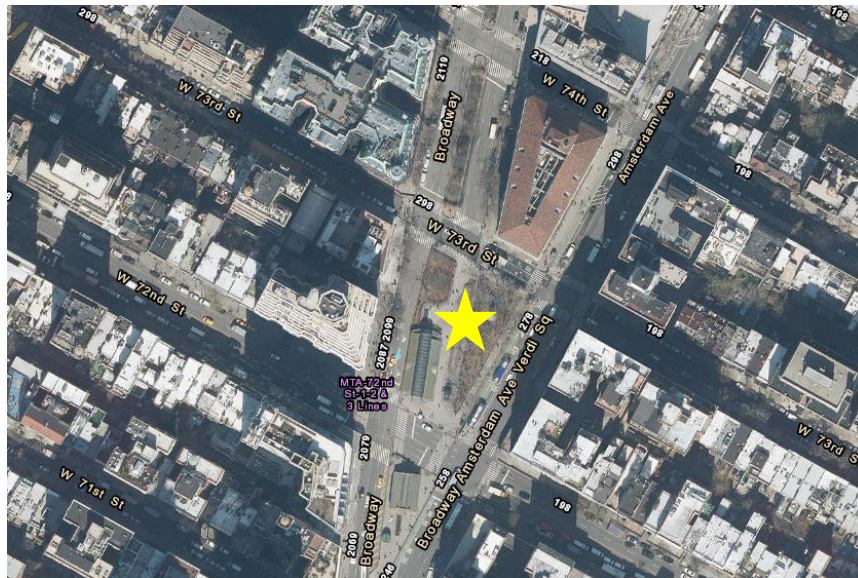
Goals

- Install an asphalt path at to provide an accessible route within the square.
- Provide water service and cross-connection controls.
- Install an RPZ (Reduced Pressure Zone) backflow device and a water meter in a vandal proof enclosure.
- Install two quick couplers at Verdi Square.





New York City NTS



Neighborhood of Upper West Side NTS



Site: Verdi Square NTS



MG-123M Installation of Water Service Verdi Square | Project Location



LEGEND

EXISTING WATER MAIN



CONTRACT LIMIT LINE



GRAPHIC SCALE



NYC Parks

MG-123M Installation of Water Service Verdi Square | Existing Conditions

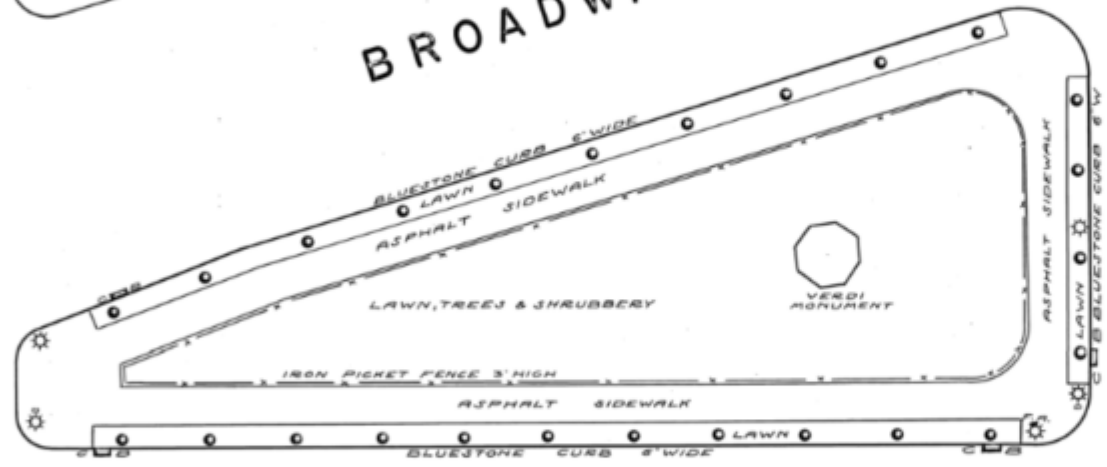


NTS

W. 72ND ST.

BROADWAY

W. 73RD ST.



AMSTERDAM AVE.

August 8, 1935



NYC Parks

MG-123M Installation of Water Service Verdi Square | Historical Mapping

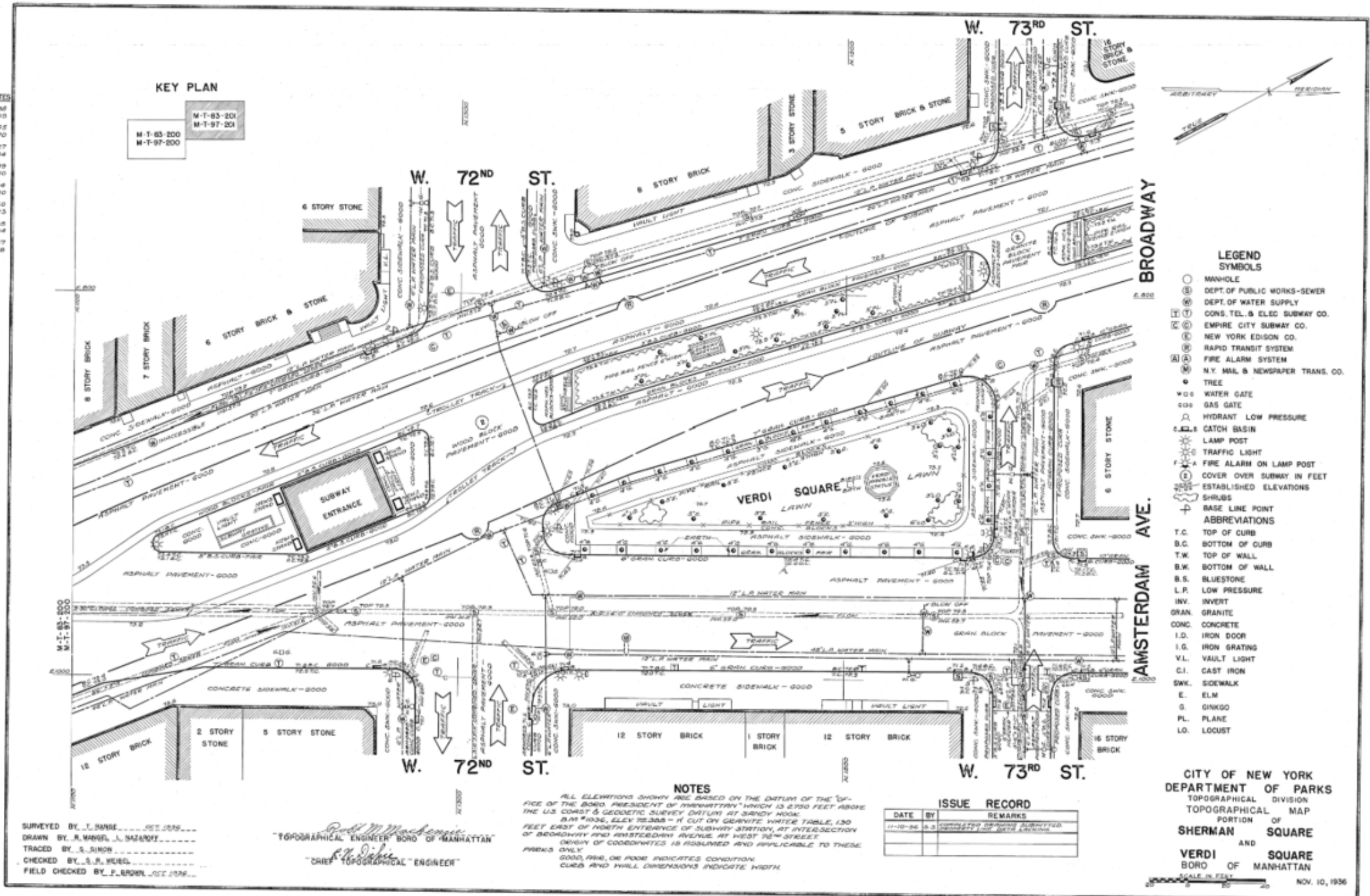
N

NTS

TABLE OF COORDINATES

TRAVERSE POINT	COORDINATES
1	N 1263.38 E 619.40
2	N 1348.45 E 795.70
3	N 1548.27 E 794.84
4	N 1567.39 E 1000.00
5	N 1568.14 E 1000.00
6	N 1572.69 E 890.23
7	N 1572.85 E 842.84
8	N 1550.87 E 821.68

KEY PLAN



- LEGEND SYMBOLS**
- MANHOLE
 - ⊕ DEPT. OF PUBLIC WORKS-SEWER
 - ⊕ DEPT. OF WATER SUPPLY
 - ⊕ CONS. TEL. & ELEC. SUBWAY CO.
 - ⊕ EMPIRE CITY SUBWAY CO.
 - ⊕ NEW YORK EDISON CO.
 - ⊕ RAPID TRANSIT SYSTEM
 - ⊕ FIRE ALARM SYSTEM
 - ⊕ N.Y. MAIL & NEWSPAPER TRANS. CO.
 - TREE
 - ⊕ WATER GATE
 - ⊕ GAS GATE
 - ⊕ HYDRANT LOW PRESSURE
 - ⊕ CATCH BASIN
 - ⊕ LAMP POST
 - ⊕ TRAFFIC LIGHT
 - ⊕ FIRE ALARM ON LAMP POST
 - ⊕ COVER OVER SUBWAY IN FEET
 - ⊕ ESTABLISHED ELEVATIONS
 - ⊕ SHRUBS
 - ⊕ BASE LINE POINT
- ABBREVIATIONS**
- T.C. TOP OF CURB
 - B.C. BOTTOM OF CURB
 - T.W. TOP OF WALL
 - B.W. BOTTOM OF WALL
 - B.S. BLUESTONE
 - L.P. LOW PRESSURE
 - INV. INVERT
 - GRAN. GRANITE
 - CONC. CONCRETE
 - I.D. IRON DOOR
 - I.G. IRON GRATING
 - V.L. VAULT LIGHT
 - C.I. CAST IRON
 - SWK. SIDEWALK
 - E. ELM
 - S. GINKGO
 - PL. PLANE
 - LO. LOCUST

NOTES

ALL ELEVATIONS SHOWN ARE BASED ON THE DATUM OF THE OFFICE OF THE BOARD OF SUPERVISORS OF THE CITY OF NEW YORK, WHICH IS 2.290 FEET ABOVE THE U.S. COAST & GEODETIC SURVEY DATUM OF 1929. B.M. #1036, ELEV. 72.305 - IS CUT ON GRANITE WATER TABLE, 130 FEET EAST OF NORTH ENTRANCE OF SUBWAY STATION, AT INTERSECTION OF BROADWAY AND AMSTERDAM AVENUE, AT WEST 72ND STREET. ORIGIN OF COORDINATES IS ASSUMED AND APPLICABLE TO THESE PLOTS ONLY.

GOOD, FAIR, OR POOR INDICATES CONDITION. CURB AND WALL DIMENSIONS INDICATE WIDTH.

ISSUE RECORD

DATE	BY	REMARKS
11-10-36	S.S.	SUBMITTED FOR REVIEW

CITY OF NEW YORK
DEPARTMENT OF PARKS
TOPOGRAPHICAL DIVISION
TOPOGRAPHICAL MAP
PORTION OF
SHERMAN SQUARE
AND
VERDI SQUARE
BORO OF MANHATTAN

SCALE IN FEET
0 10 20
NOV. 10, 1936

SURVEYED BY J. HANSE
DRAWN BY J. HANSE
TRACED BY S. J. HANSE
CHECKED BY S. J. HANSE
FIELD CHECKED BY P. BROWN

Robert M. Mackenzie
TOPOGRAPHICAL ENGINEER BORO OF MANHATTAN
P. J. HANSE
"CHIEF TOPOGRAPHICAL ENGINEER"

M - T - 83 - 201
M - T - 97 - 201

November 10, 1936

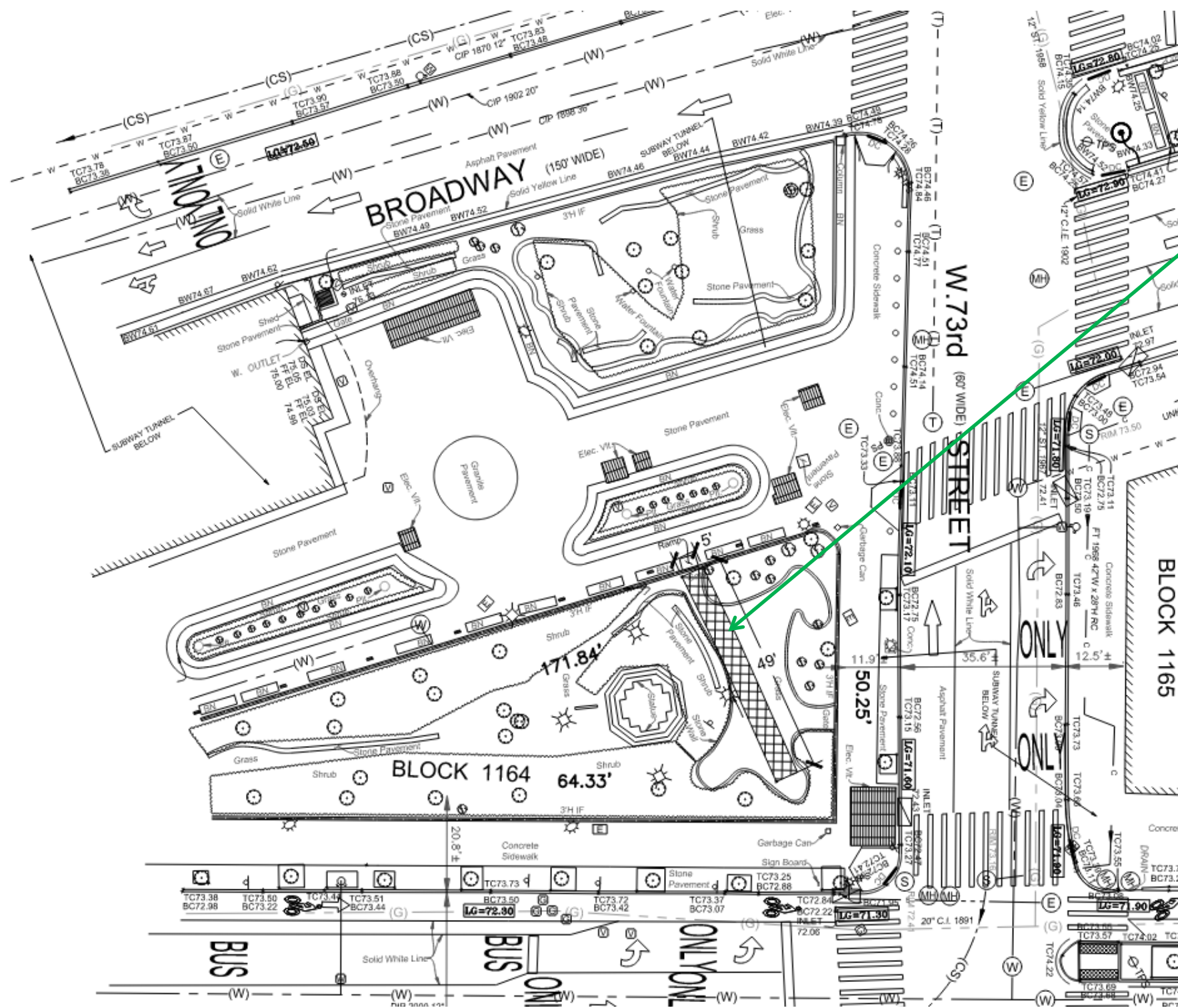


MG-123M Installation of Water Service
Verdi Square | Historical Mapping

NYC Parks



MG-123M Installation of Water Service Verdi Square | Survey



Existing temporary access
5' x 49' path



1 – Verdi Square – 1940s



2 – Verdi Square – 1980s



3 – Verdi Square – 2024



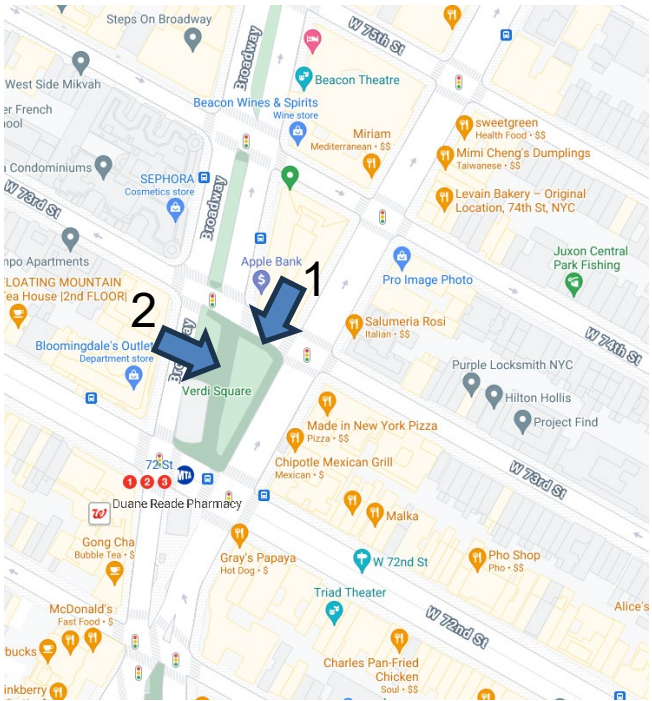
MG-123M Installation of Water Service Verdi Square | Site Evolution



1 – W 73rd Street looking South



2 – Verdi Path looking East

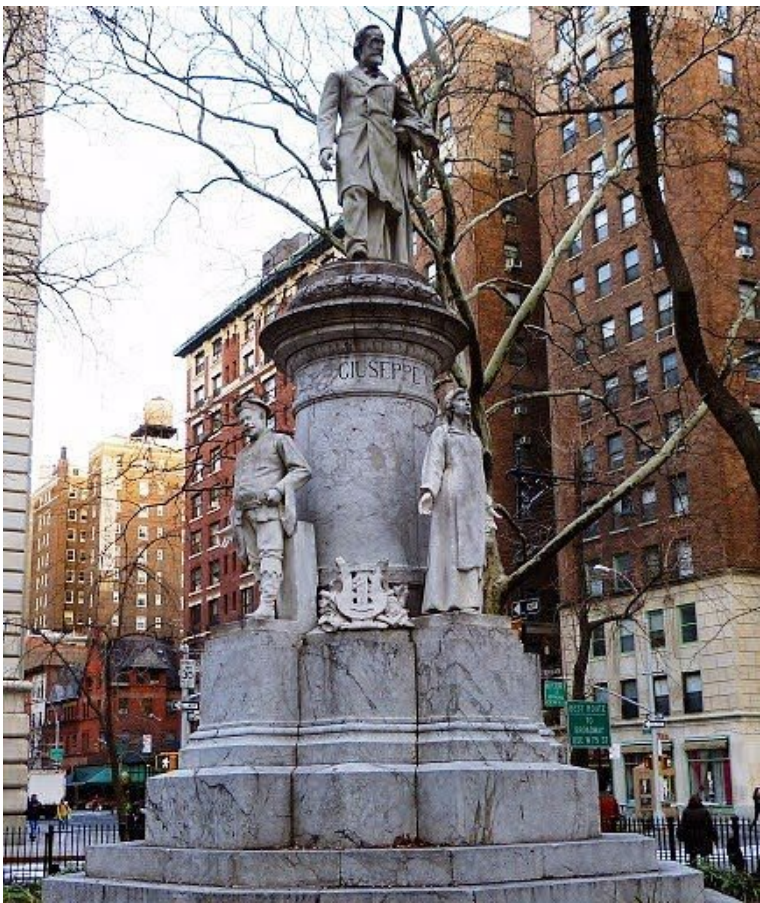


NYC Parks

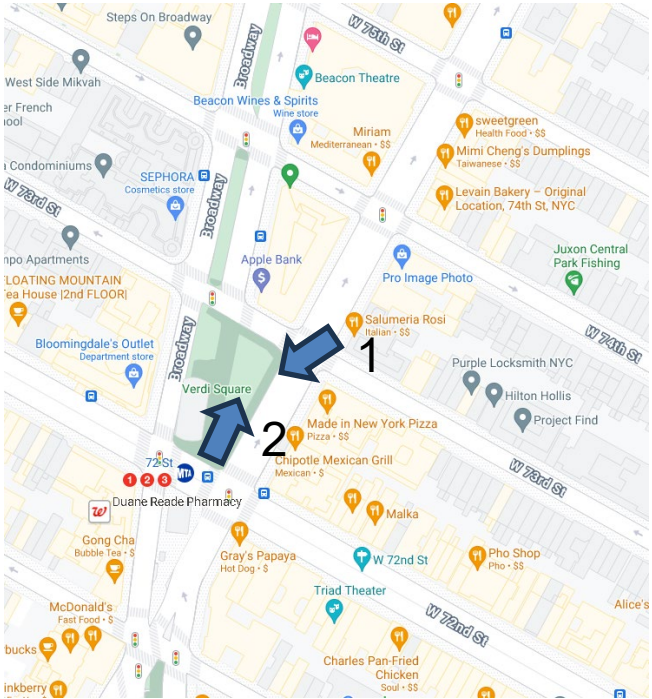
MG-123M Installation of Water Service **Verdi Square | Existing Conditions**



1 – Amsterdam Avenue looking South



2 – Giuseppe Verdi Monument



NYC Parks

MG-123M Installation of Water Service **Verdi Square | Existing Conditions**

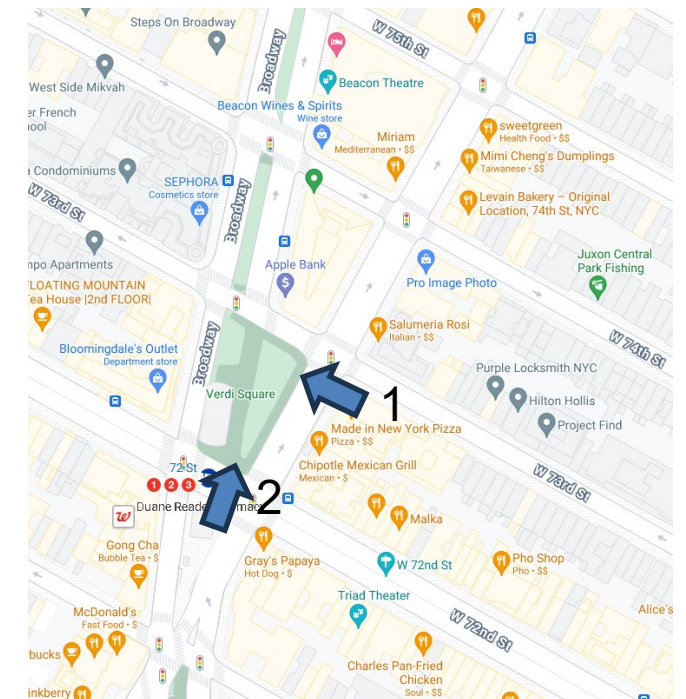




1 – Amsterdam Avenue looking West



2 – W 72nd Street looking North

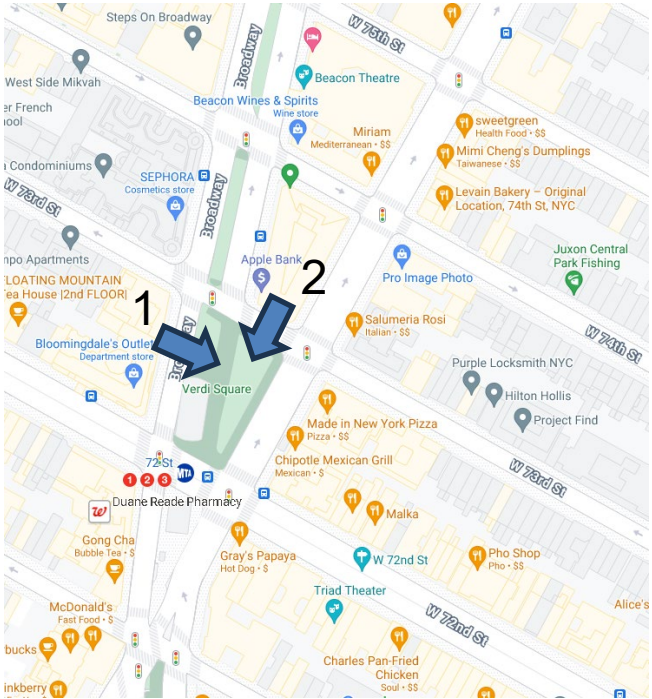




1 – Verdi Path looking East



2 – Verdi Path looking South



NYC Parks

MG-123M Installation of Water Service **Verdi Square | Existing Conditions**





1 – W 73rd Street looking Southeast



2 – Verdi Path looking South



NYC Parks

MG-123M Installation of Water Service Verdi Square | Existing Conditions

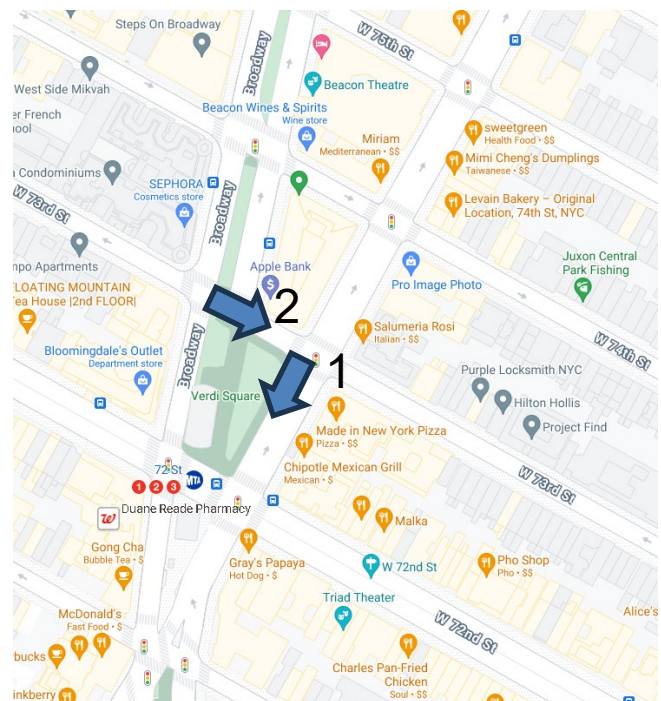




1 – Amsterdam Avenue looking South



2 – W 73rd Street looking East



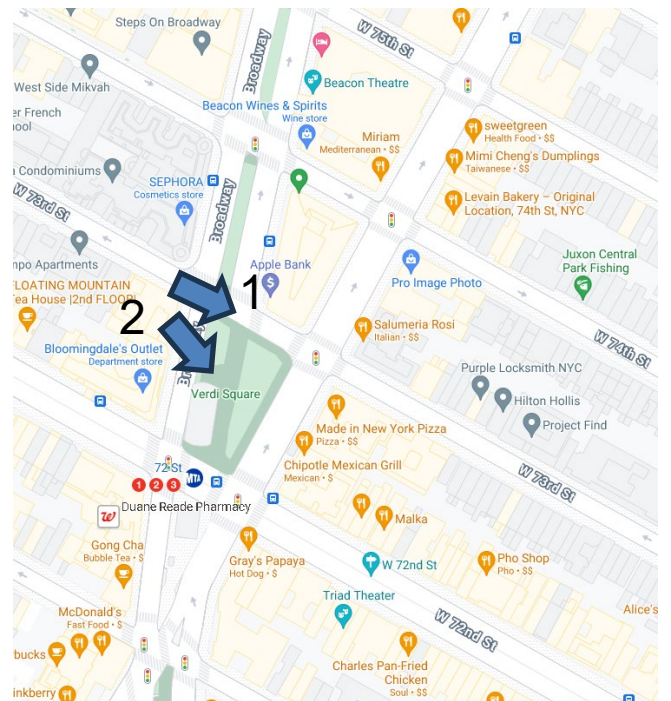
MG-123M Installation of Water Service Verdi Square | Existing Conditions



1 – W 73rd Street looking East



2 – W 73rd Street looking Southeast



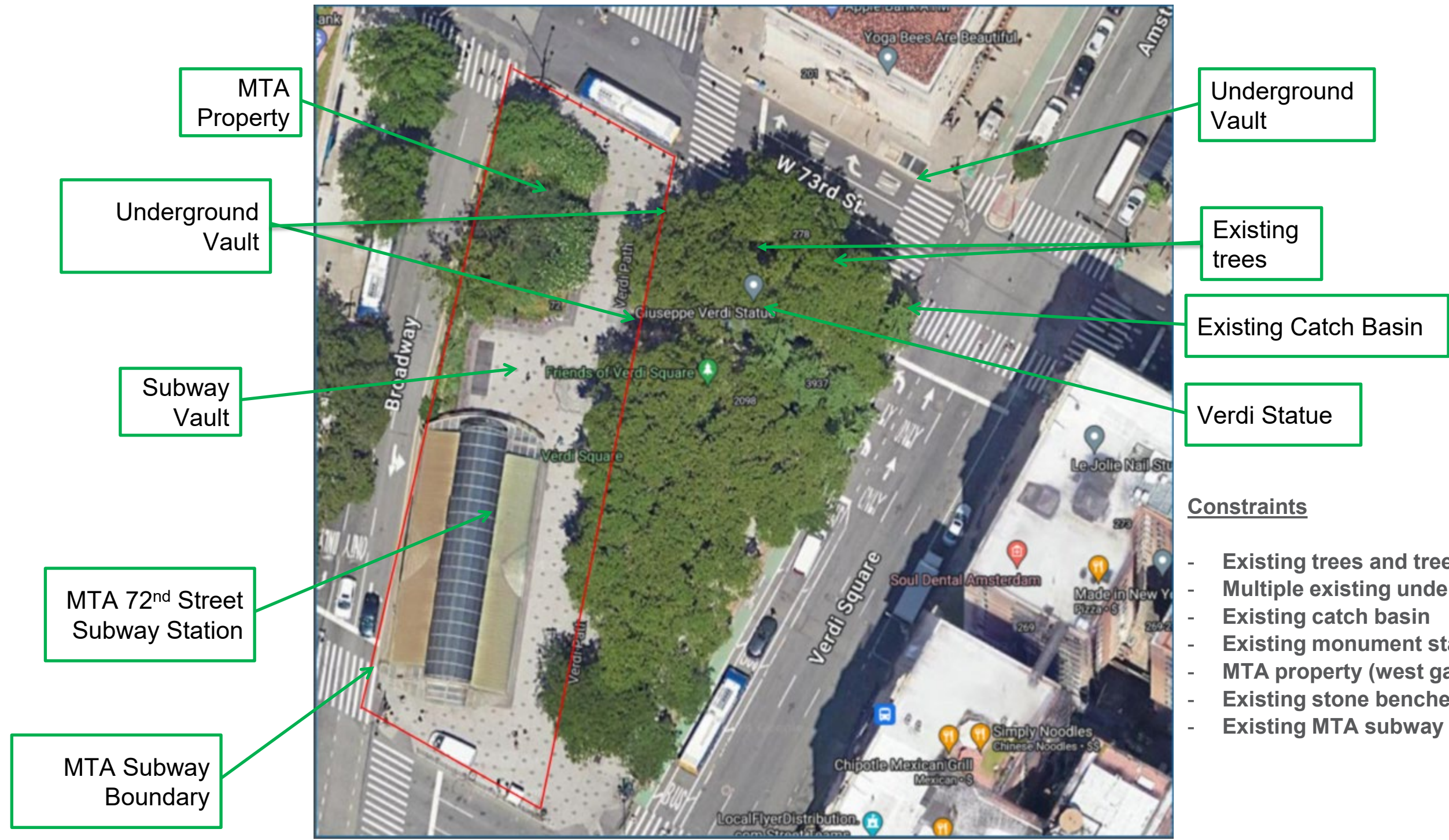
NYC Parks

MG-123M Installation of Water Service Verdi Square | Existing Conditions



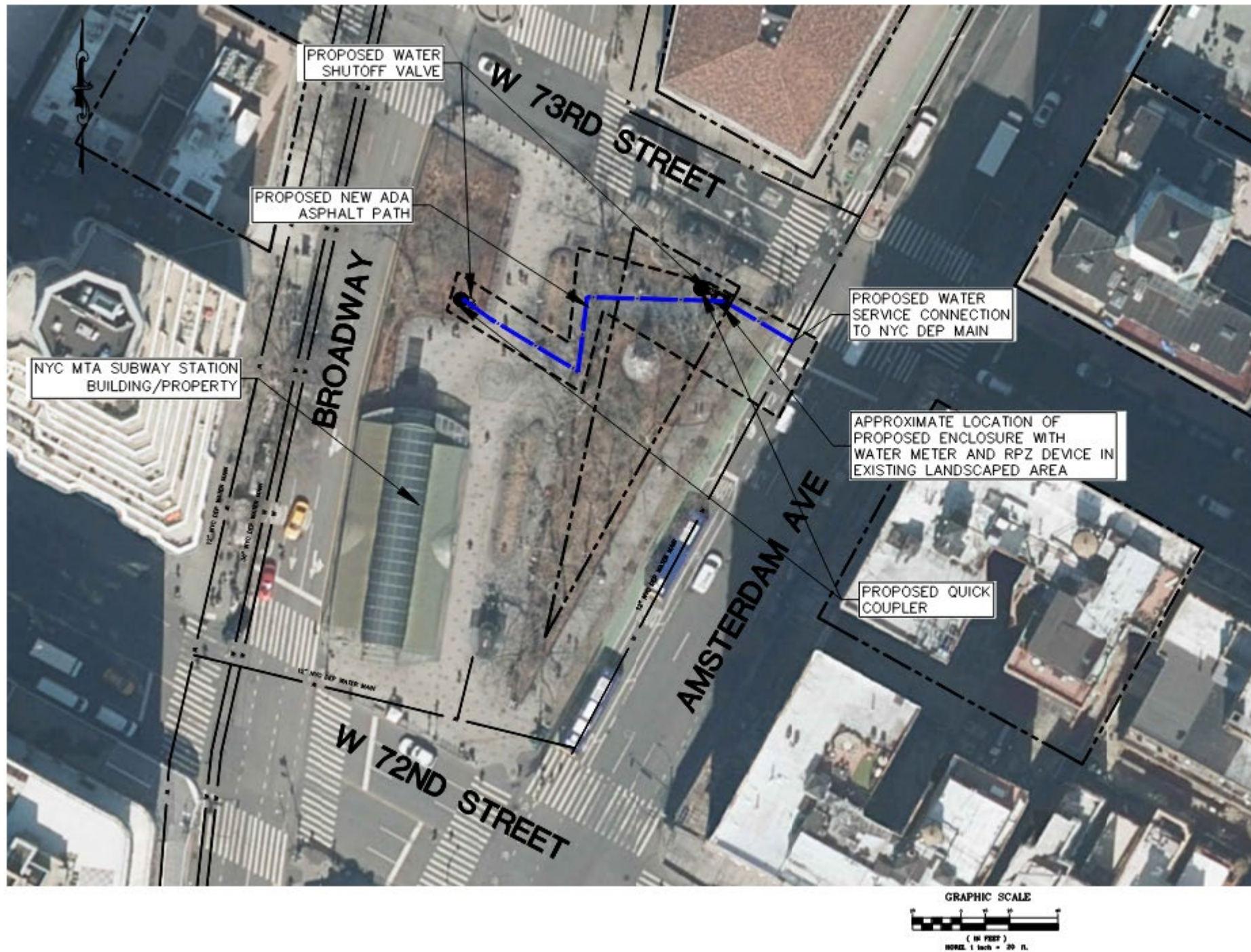


MG-123M Installation of Water Service Verdi Square | RPZ and Enclosure Location



Constraints

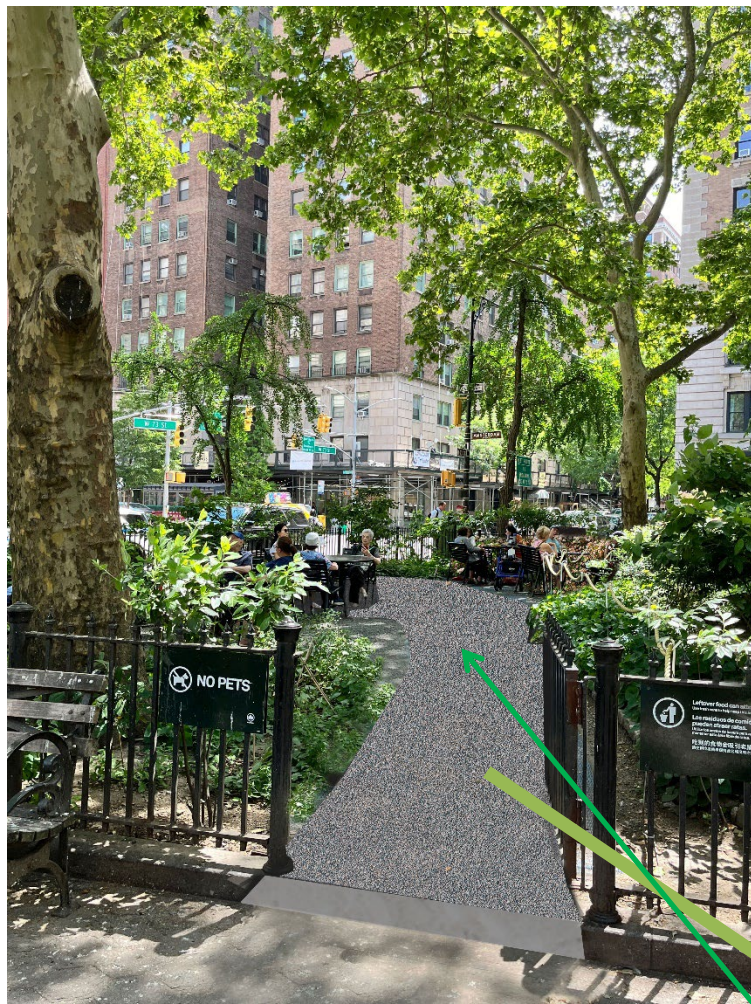
- Existing trees and tree roots
- Multiple existing underground vaults
- Existing catch basin
- Existing monument statue
- MTA property (west garden area)
- Existing stone benches
- Existing MTA subway



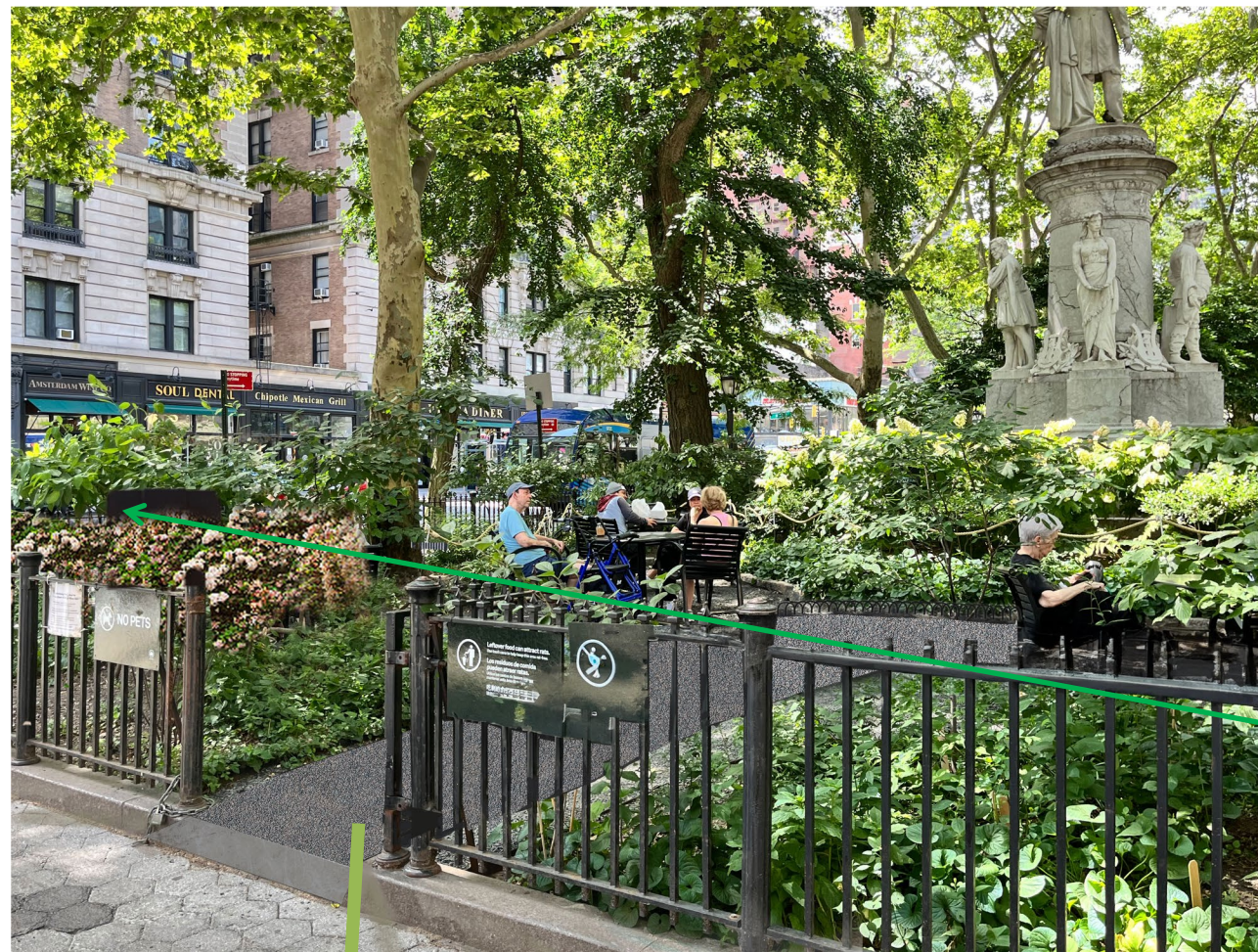
LEGEND

EXISTING WATER MAIN	—
CONTRACT LIMIT LINE	- - - -
PROPOSED UNDERGROUND WATER SERVICE	—
PROPOSED QUICK COUPLER	●
PROPOSED WATER SHUTOFF VALVE	⊕

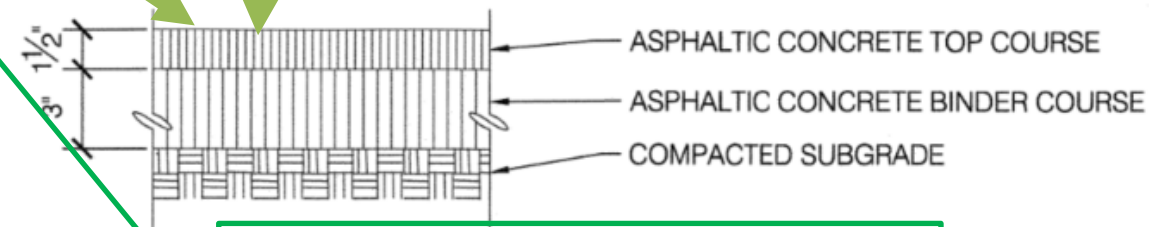




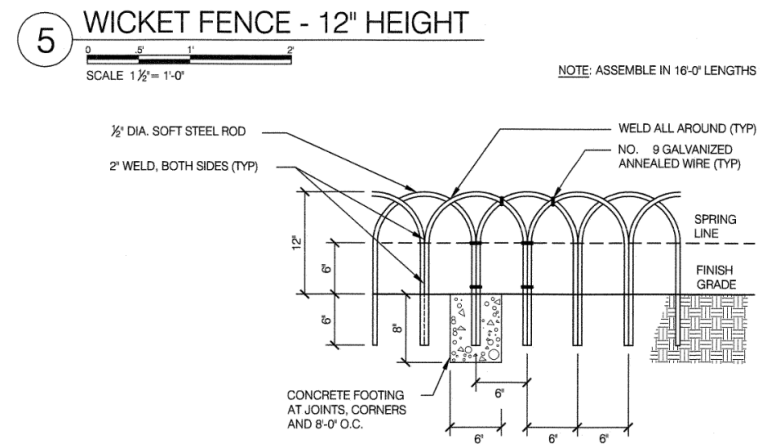
1 - Verdi Path looking West



2 - Verdi Path looking South

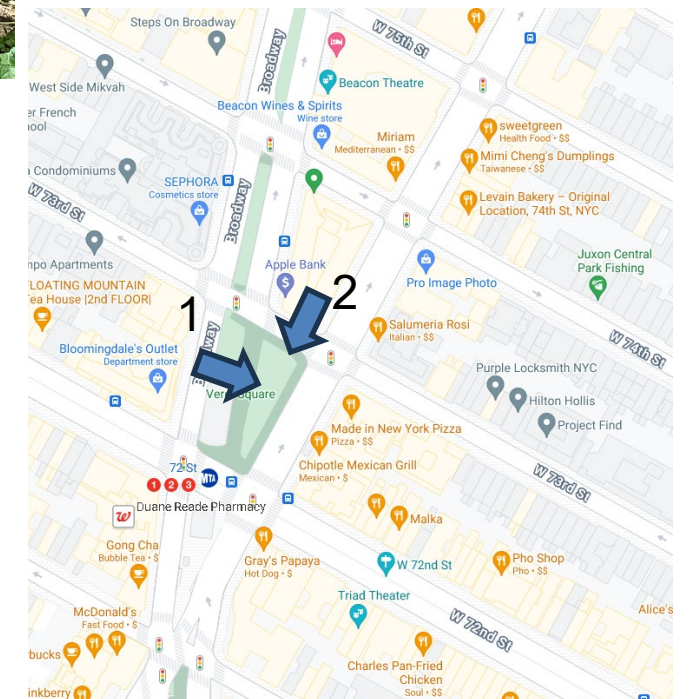


PROPOSED ASPHALT WALKWAY
WITH STEEL EDGING, EXISTING
GRANITE CURB TO BE CUT AND
SUNK



Proposed Wicket Fence
Installed directly in ground

APPROXIMATE LOCATION OF
PROPOSED RPZ ENCLOSURE
(38" HIGH X 46" WIDE)

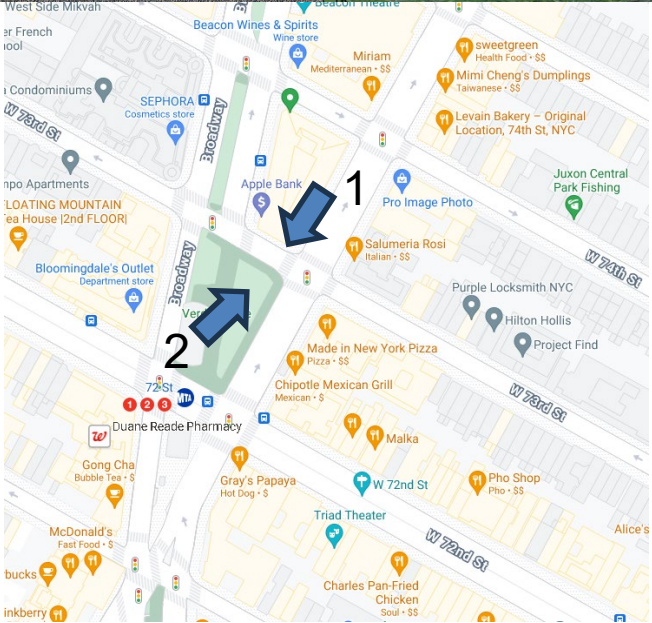




1 - Verdi Square looking South



2 - Verdi Square looking North



APPROXIMATE LOCATION OF PROPOSED RPZ ENCLOSURE (38" HIGH X 46" WIDE)



NYC Parks

MG-123M Installation of Water Service
Verdi Square | Proposed Conditions



1 – Bryant Park



2 – Jackson Square



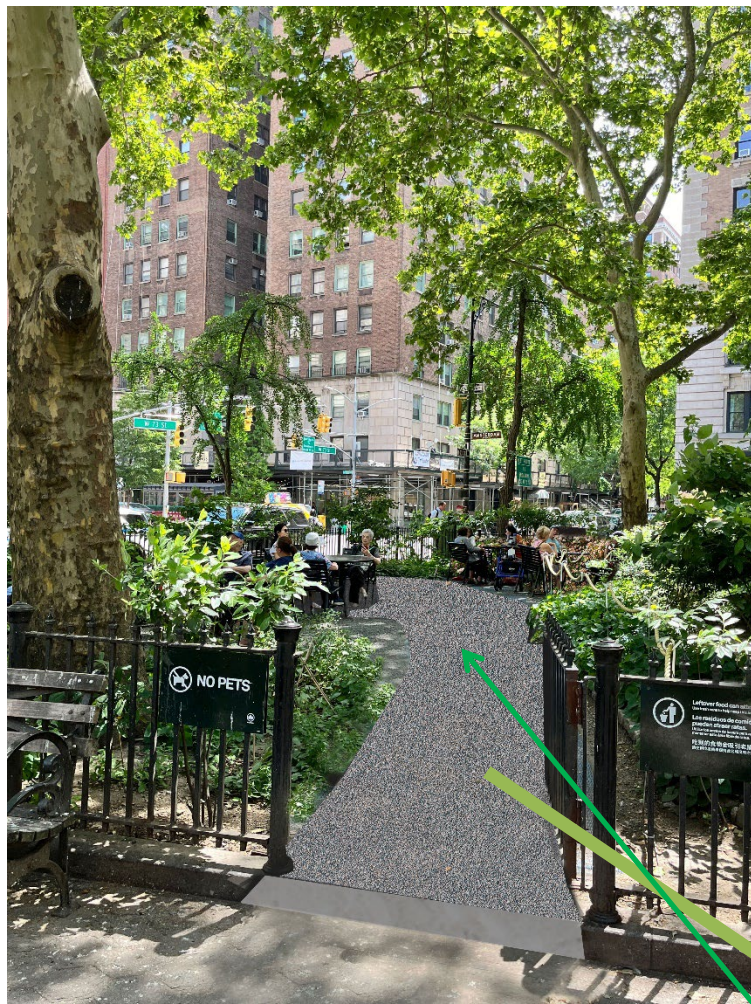
MG-123M Installation of Water Service Verdi Square | Precedents



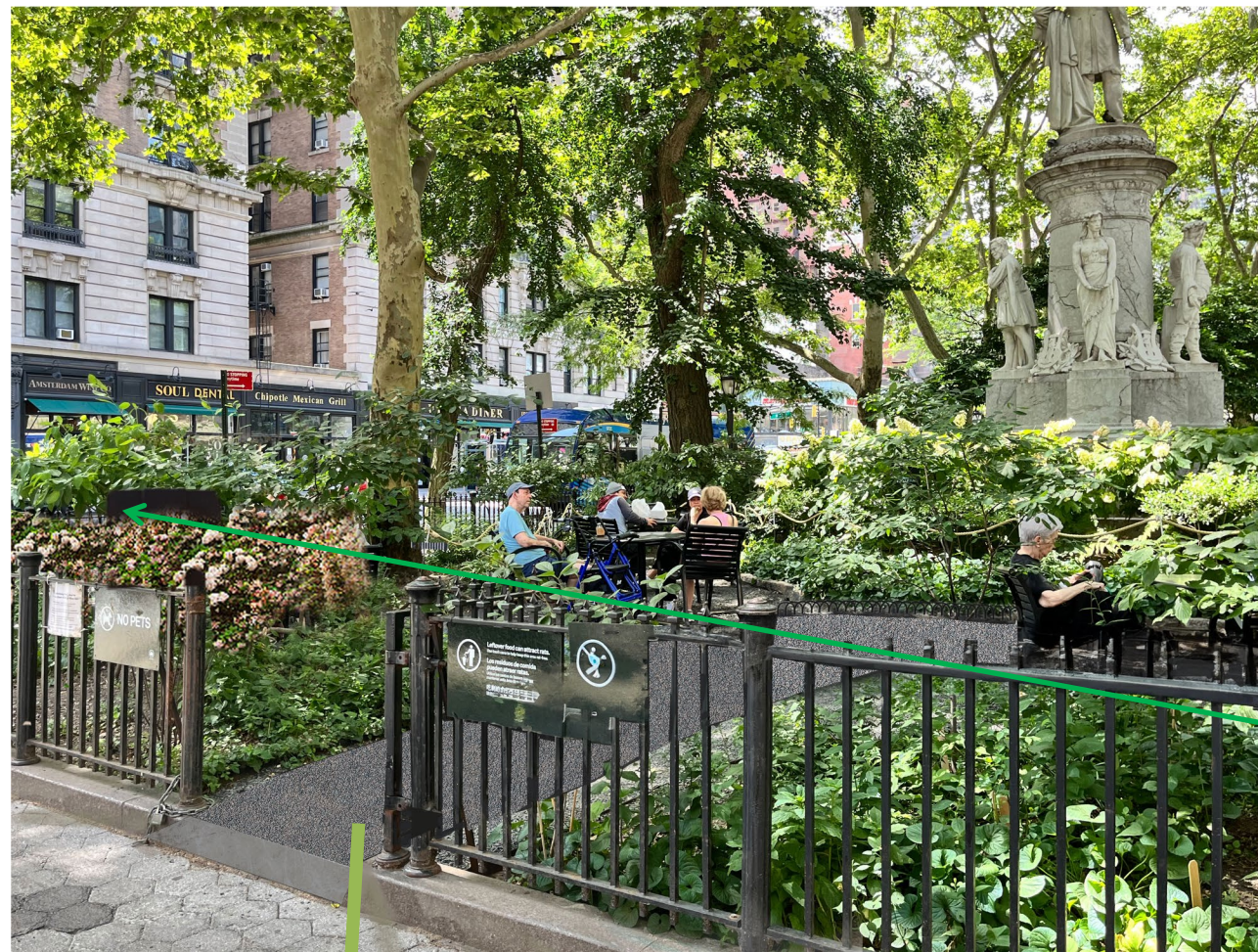
1 – Madison Square Park



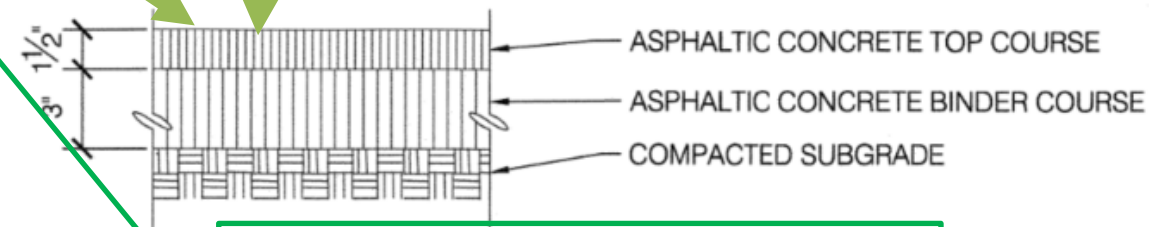
2 – Greeley Square Park



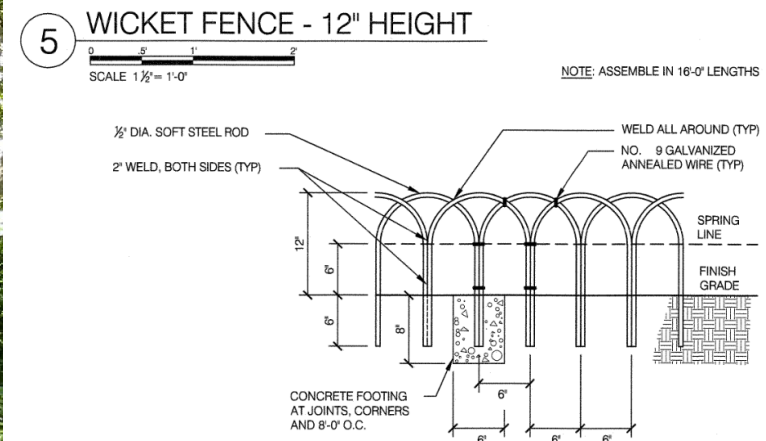
1 - Verdi Path looking West



2 - Verdi Path looking South

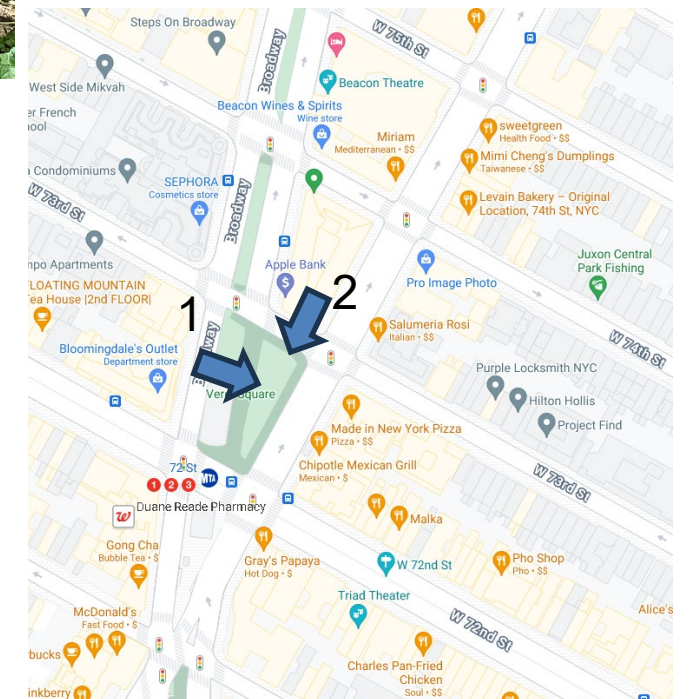


PROPOSED ASPHALT WALKWAY
WITH STEEL EDGING, EXISTING
GRANITE CURB TO BE CUT AND
SUNK



Proposed Wicket Fence
Installed directly in ground

APPROXIMATE LOCATION OF
PROPOSED RPZ ENCLOSURE
(38" HIGH X 46" WIDE)





Parks

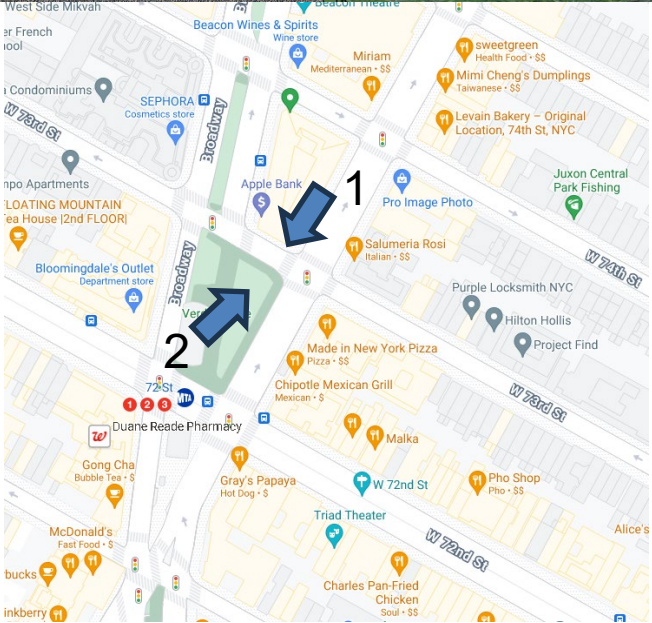
APPENDIX



1 - Verdi Square looking South



2 - Verdi Square looking North



APPROXIMATE LOCATION OF
PROPOSED RPZ ENCLOSURE
(38" HIGH X 46" WIDE)





Aluminum Enclosure

Aluminum

- Safe-T-Cover Model no. 200SN-AL (46" x 19")
- Color – Black

Benefits:

- Vandal Proof: permanent anchor to concrete pad
- Vandal Proof: durable material
- Vandal Proof: add enhanced locking mechanism
- No underground vault:
 - shallow excavation
 - underground drain not needed
 - leak detection alarm inside vault not needed



Quick Coupler

RPZ Enclosure with RPZ and Water Meter – Aluminum RPZ Enclosure



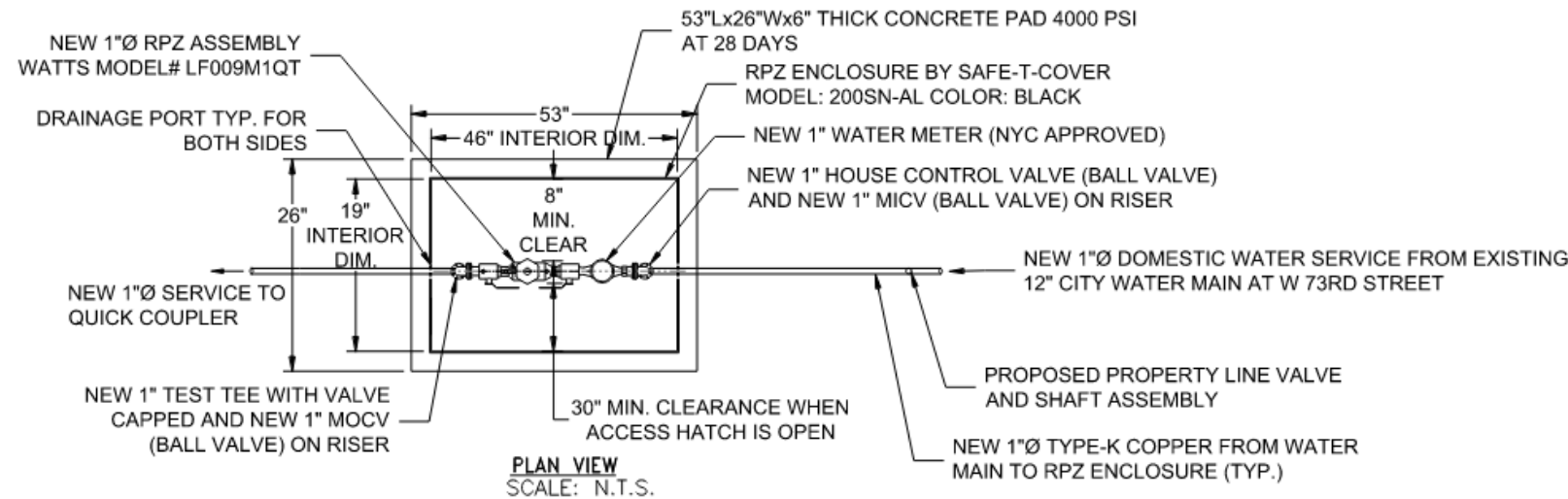
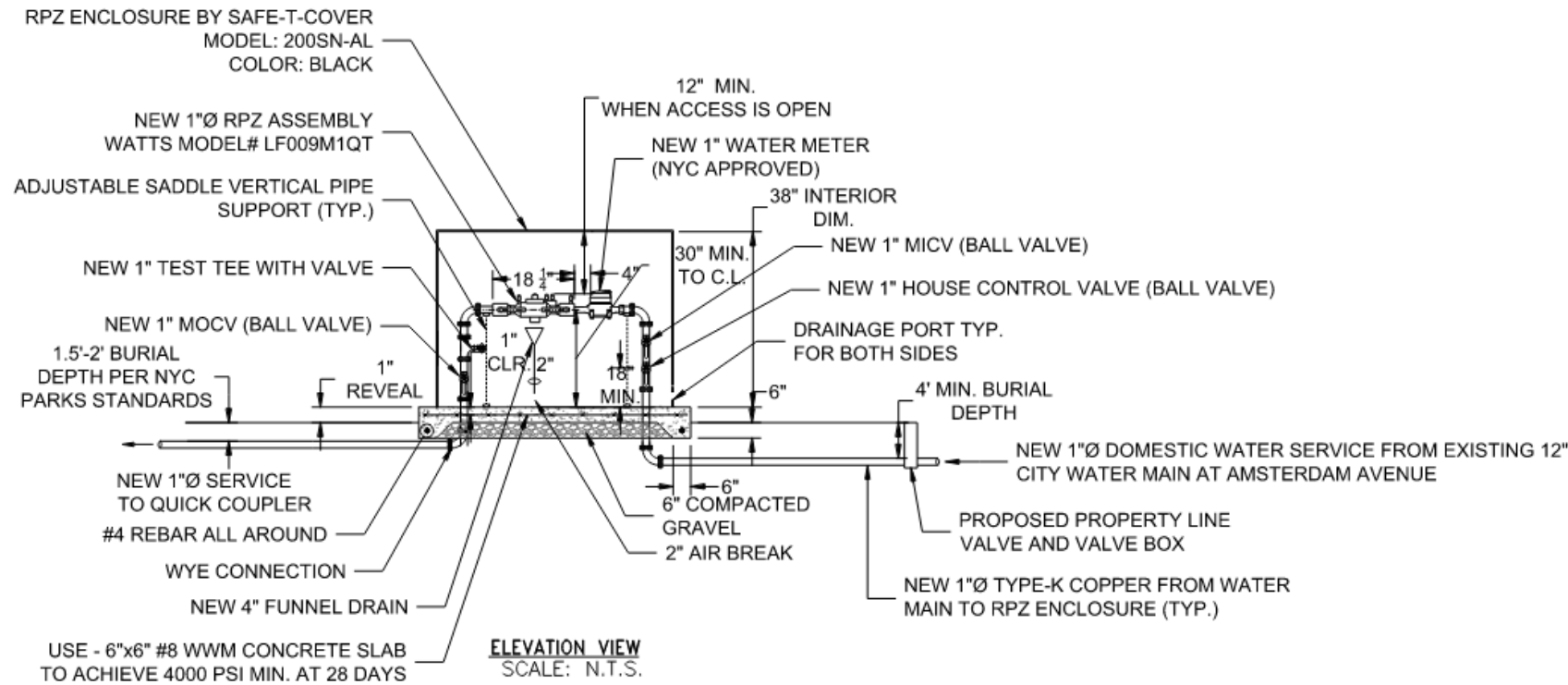
NYC Parks

MG-123M Installation of Water Service

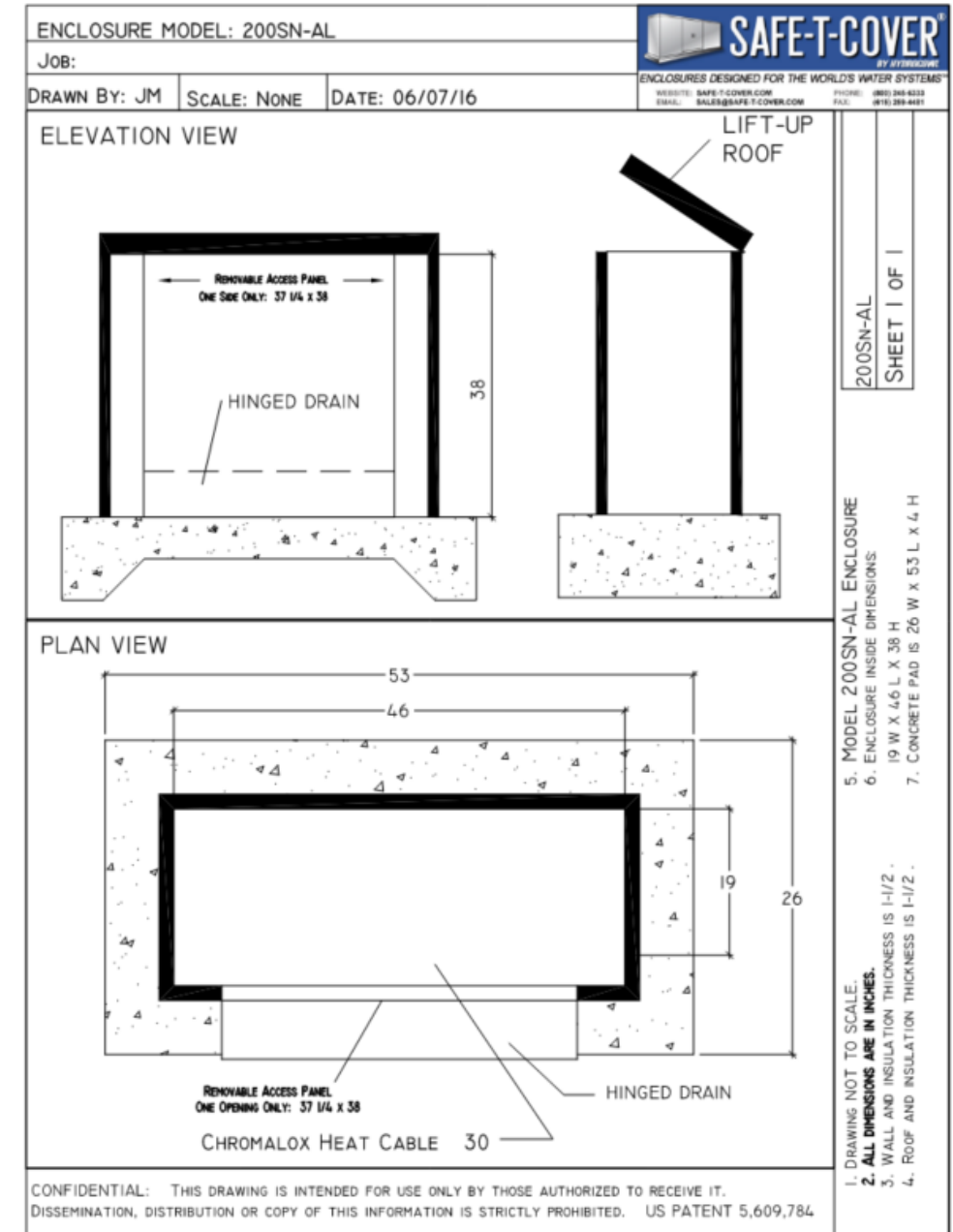
Verdi Square | RPZ Enclosure with RPZ and Water Meter / Quick Coupler



Otto Luyken- Cherry Laurel



RPZ Enclosure with RPZ and Water Meter – Aluminum RPZ Enclosure



Safe-T-Cover Model no. 200SN-AL



NYC Parks

MG-123M Installation of Water Service Verdi Square | RPZ Enclosure