

December 19, 2023
Public Hearing

The current proposal is:

Preservation Department – Item 5, LPC-23-09092

16 Jones Street – Greenwich Village Historic District Extension II Borough of Manhattan

To testify virtually, please join Zoom

Webinar ID: 861 6220 9774

Passcode: 575221

By Phone: 1 646-558-8656 US (New
York) 877-853-5257 (Toll free) US
888 475 4499 (Toll free)

Note: If you want to testify virtually on an item, join the Zoom webinar at the agenda's "Be Here by" time (about an hour in advance). When the Chair indicates it's time to testify, "raise your hand" via the Zoom app if you want to speak (*9 on the phone). Those who signed up in advance will be called first.

GREENWICH HOUSE POTTERY STUDIO

16 JONES STREET
NEW YORK, NY 10014

BLOCK: 590 LOT: 20

LPC Hearing
DECEMBER 2023

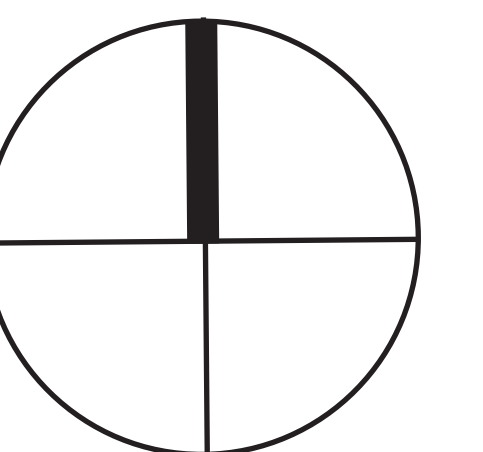
o g a w a | d e p a r d o n
a r c h i t e c t s

7 Avenue South



Site Plan
(# of stories)

NORTH





Aerial View

10 Jones St

12 Jones St

14 Jones St

16 Jones St

18 Jones St

20 Jones St

22 Jones St

24 Jones St



Street View

16 Jones Street



View from NE corner of Bleecker street

16 Jones Street



View from NE corner of Bleecker Street



16 Jones Street: Existing Lot

25 CORNELIA STREET 6 STORY BUILDING



EXISTING GREENWICH HOUSE 2 STORY BUILDING
EXISTING GREENWICH HOUSE 1 STORY BUILDING
23 CORNELIA STREET (4 STORY BUILDING)

22 JONES STREET 6 STORY BUILDING

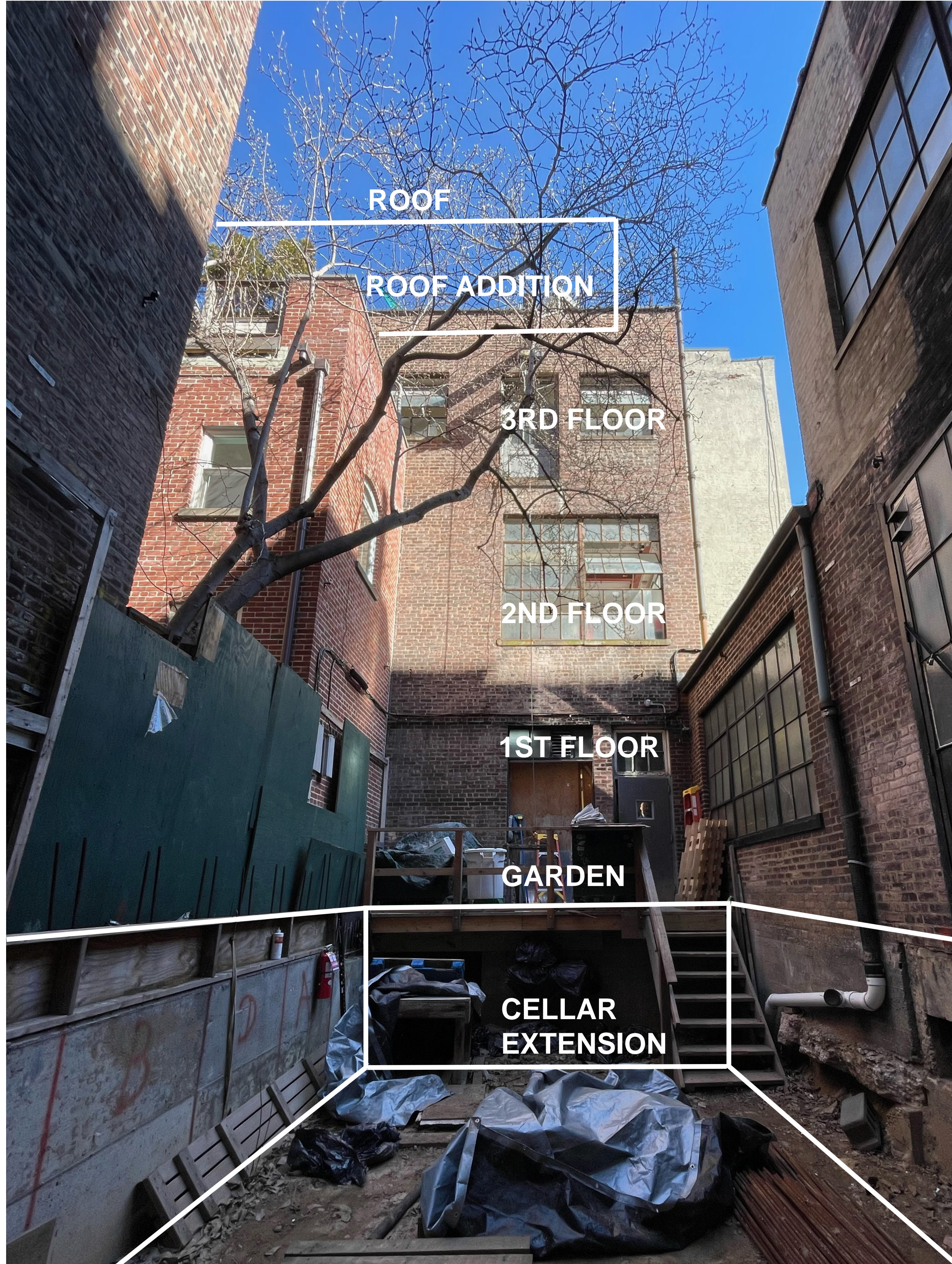


EXISTING REAR YARD
EXISTING GREENWICH HOUSE (2 STORY BUILDING)
EXISTING GREENWICH HOUSE (1 STORY BUILDING)

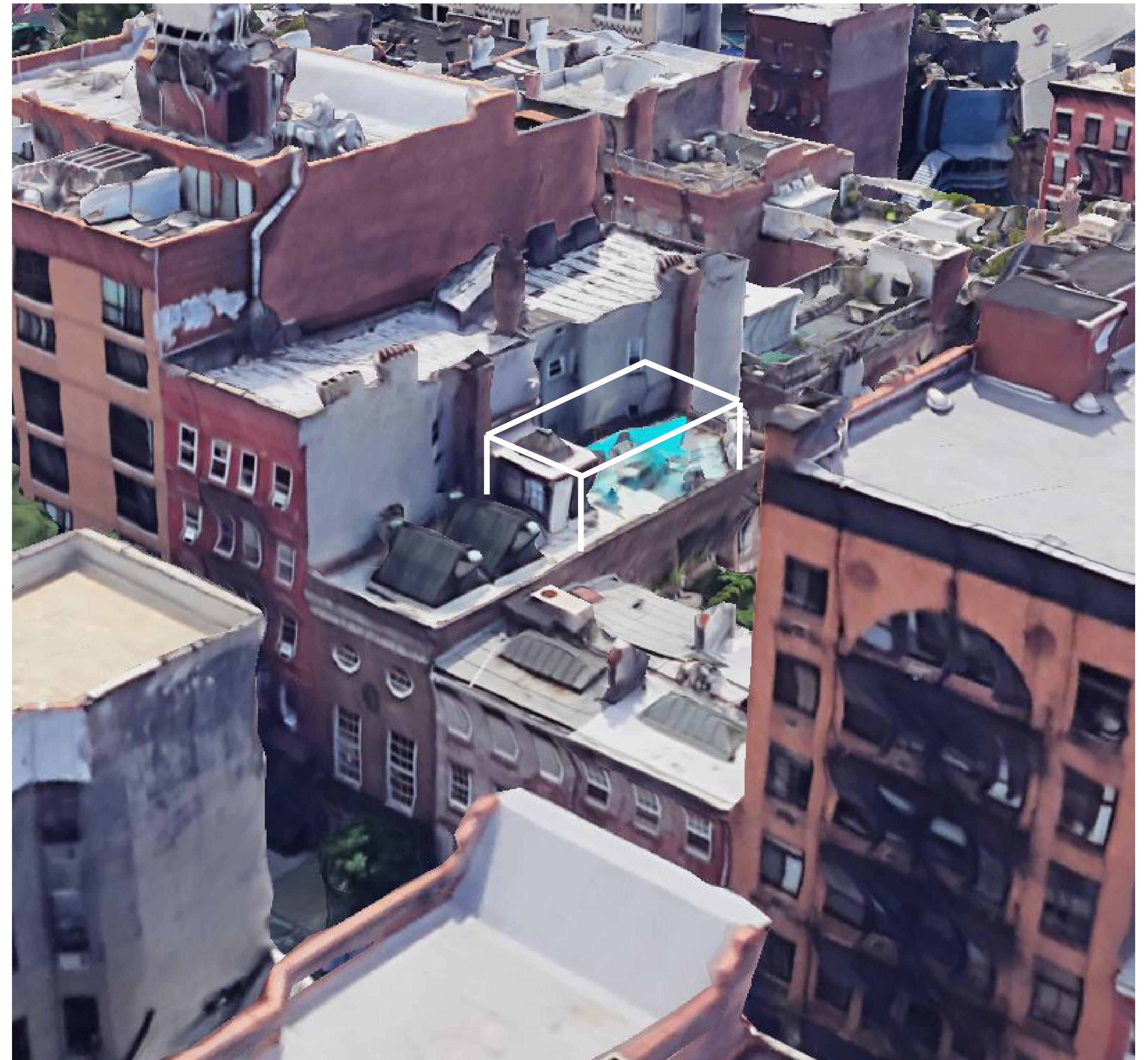
22 JONES STREET 6 STORY BUILDING



18 JONES STREET 2 STORY ADDITION
20 JONES STREET 2 STORY ADDITION



Backyard View

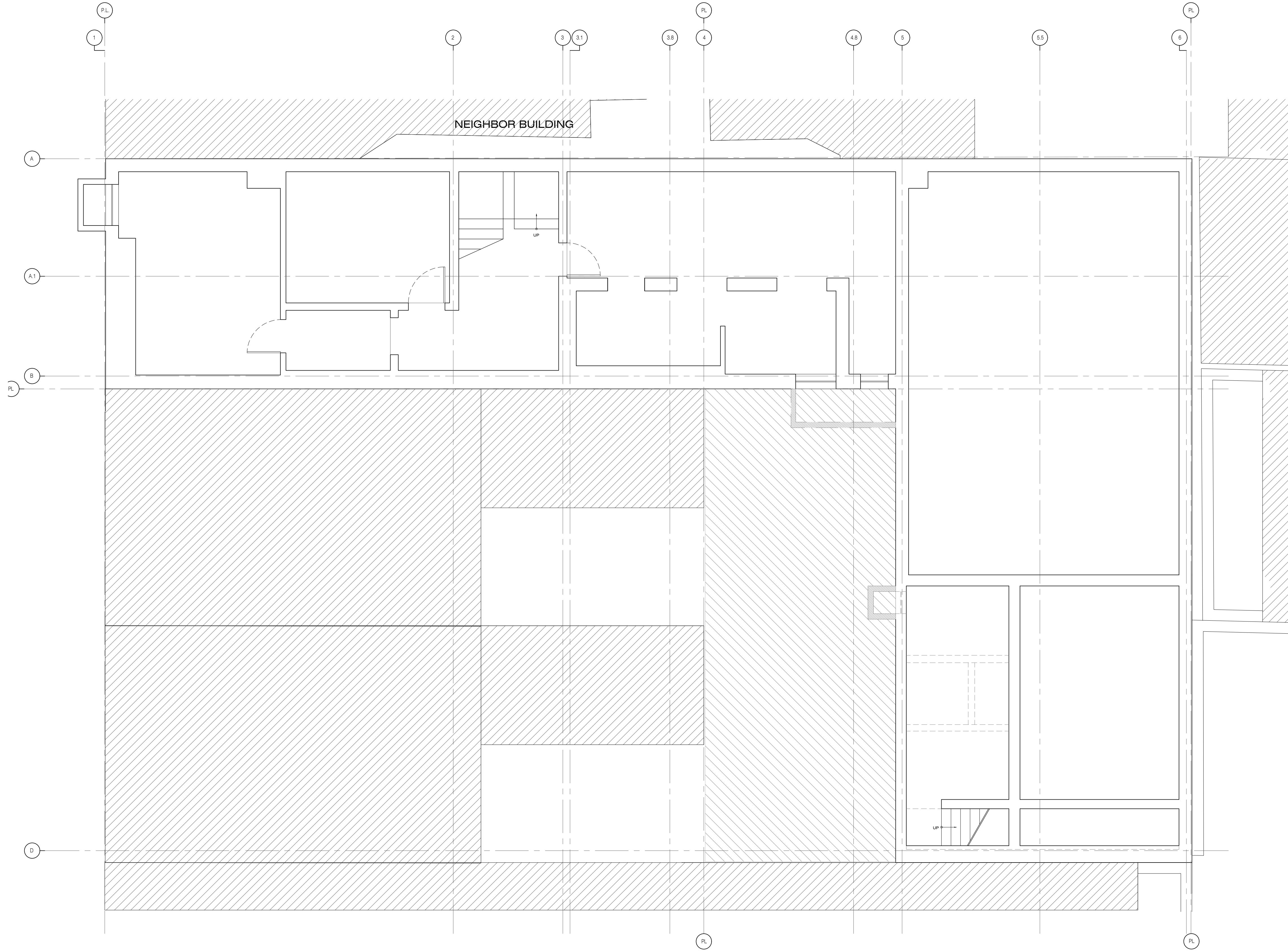


WEST 4TH STREET



JONES STREET

CORNELIA STREET

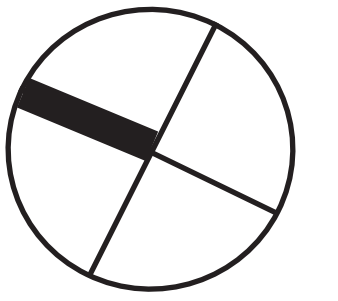


1 EXISTING PLAN - CELLAR
1/4" = 1'-0"

BLEECKER STREET

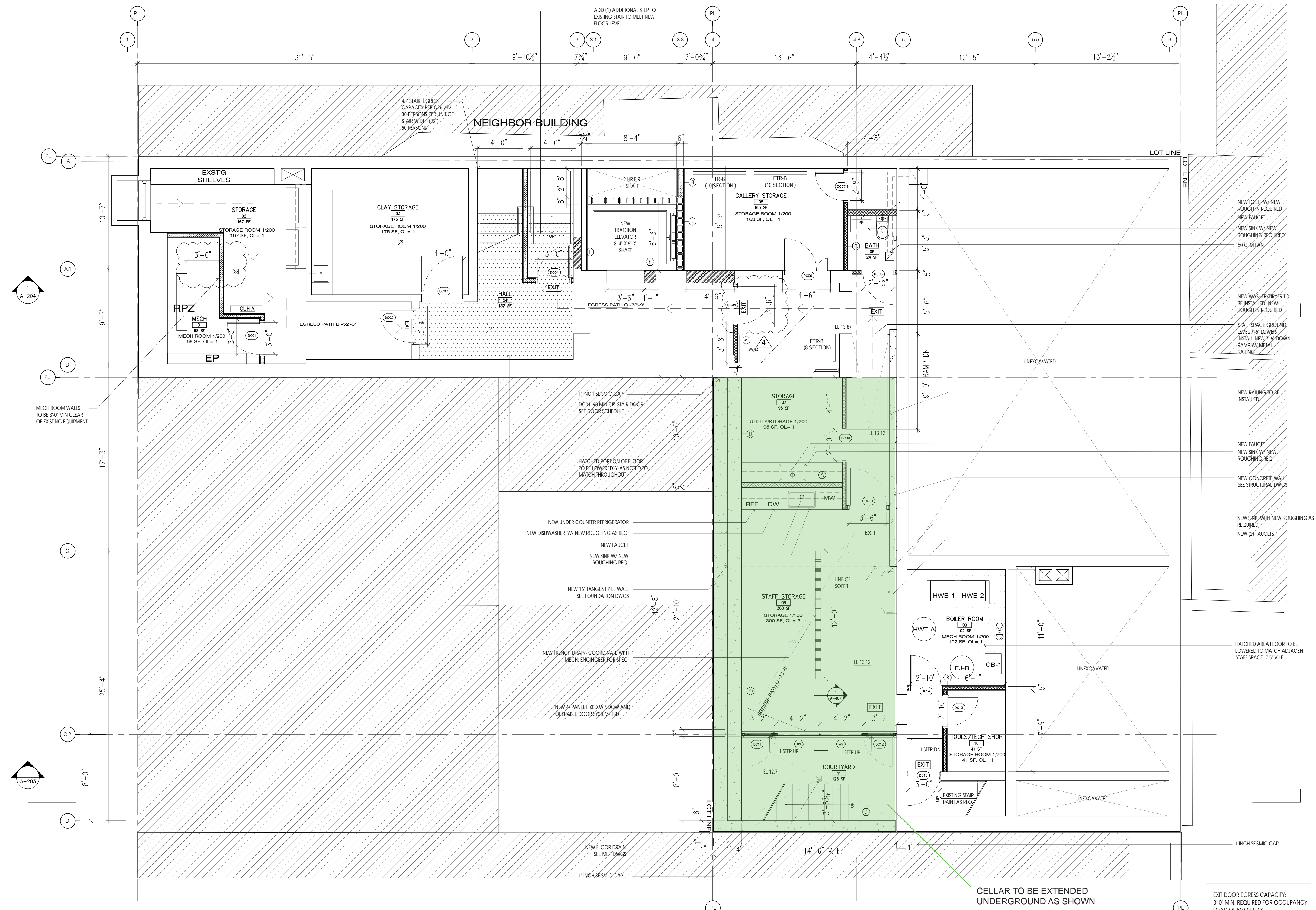
WEST 4TH STREET

NORTH



JONES STREET

CORNELIA STREET



1 PROPOSED PLAN: CELLAR
SCALE 1/4" = 1'-0"

TRAVEL DISTANCE:
CELLAR EGRESS PATH B: 52'-6" +
1/2 EGRESS PATH A: 51'-1" = **103'-7"**

TRAVEL DISTANCE:
CELLAR EGRESS PATH C: 73'-9" +
1/2 EGRESS PATH A: 51'-1" = **124'-10"**

BLEECKER STREET

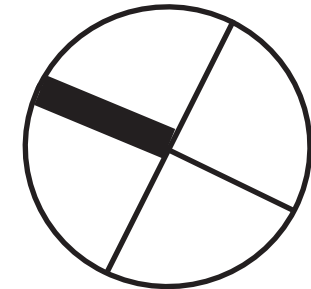
CELLAR TO BE EXTENDED
UNDERGROUND AS SHOWN

EXIT DOOR EGRESS CAPACITY:
3'-0" MIN. REQUIRED FOR OCCUPANCY
LOAD OF 50 OR LESS
CELLAR OCCUPANCY LOAD: 10

DC02: 3'-4", COMPLY
DC04: 3'-0", COMPLY
DC05: 4'-0", COMPLY
DC10: 3'-6", COMPLY
DC15: 3'-0", COMPLY

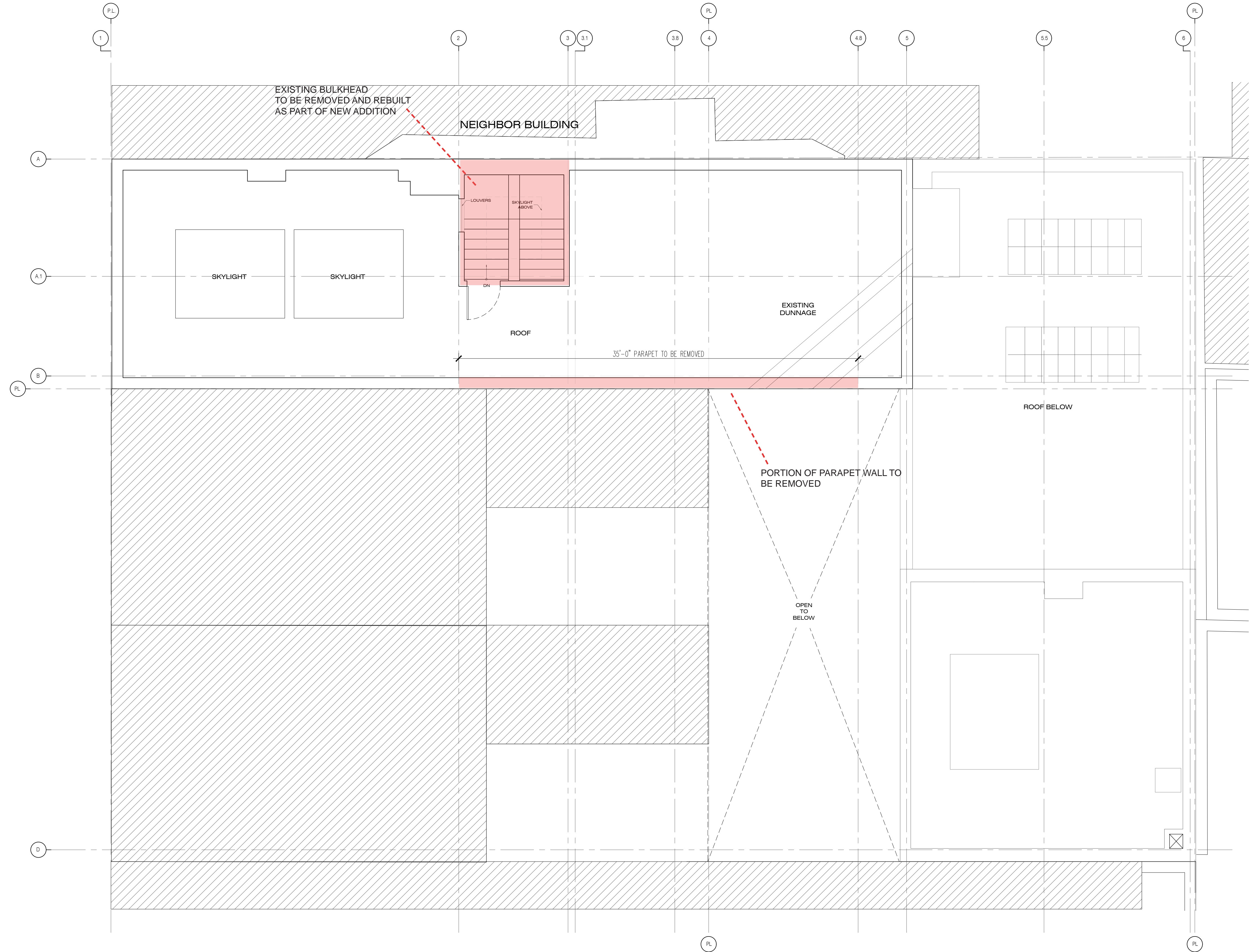
WEST 4TH STREET

NORTH



JONES STREET

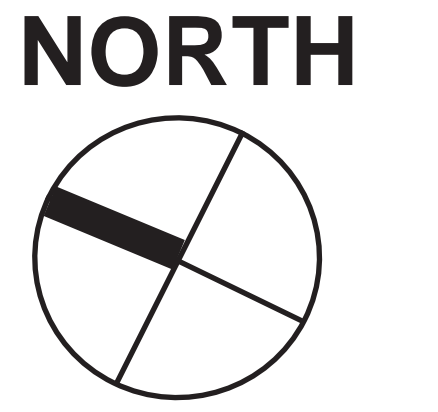
CORNELIA STREET



1 EXISTING PLAN - ROOF
1/4" = 1'-0"

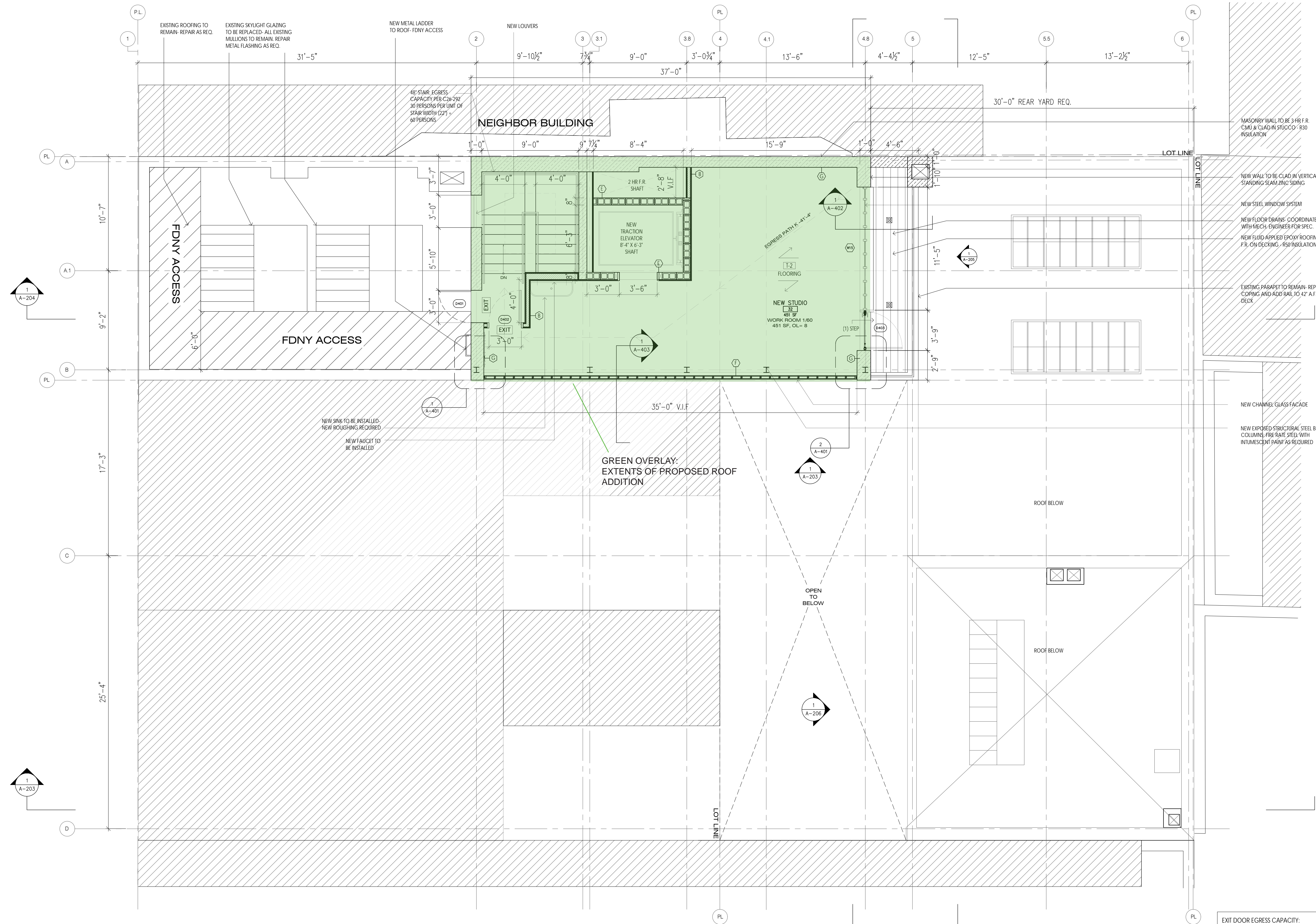
BLEECKER STREET

WEST 4TH STREET



JONES STREET

CORNELIA STREET



1 PROPOSED PLAN: 4/F
 SCALE 1/4" = 1'-0"

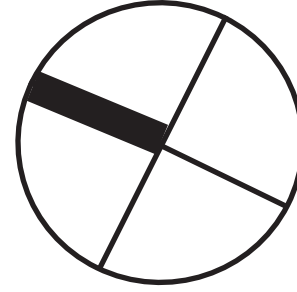
TRAVEL DISTANCE:
 4/F EGRESS PATH K: 41'-4" +
 1/F EGRESS PATH A: 51'-1" = 92'-5"

EXIT DOOR EGRESS CAPACITY:
 3'-0" MIN. REQUIRED FOR OCCUPANCY
 LOAD OF 50 OR LESS
 4/F OCCUPANCY LOAD: 8
 D401: 3'-0", COMPLY
 D402: 3'-0", COMPLY

BLEECKER STREET

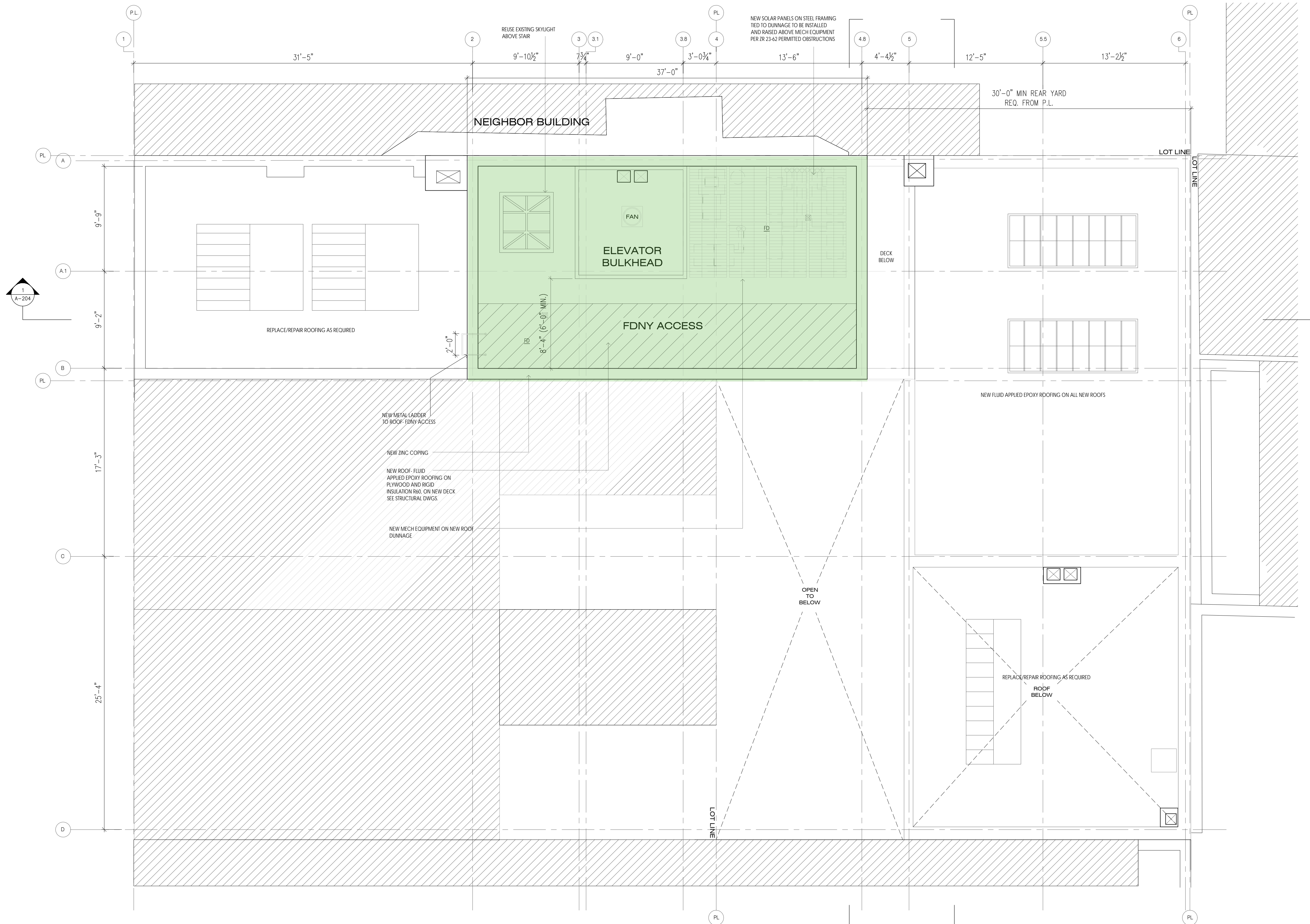
WEST 4TH STREET

NORTH



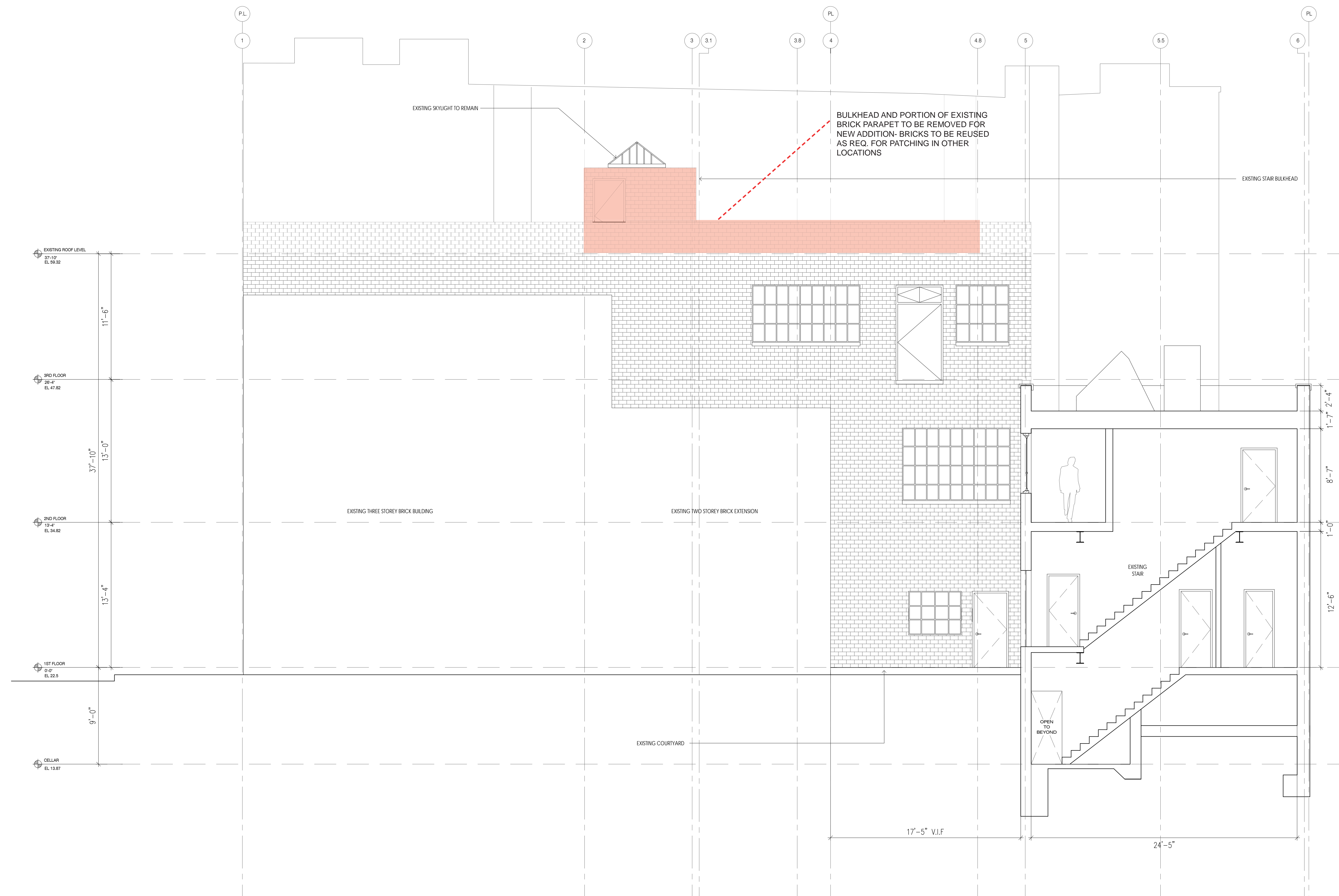
JONES STREET

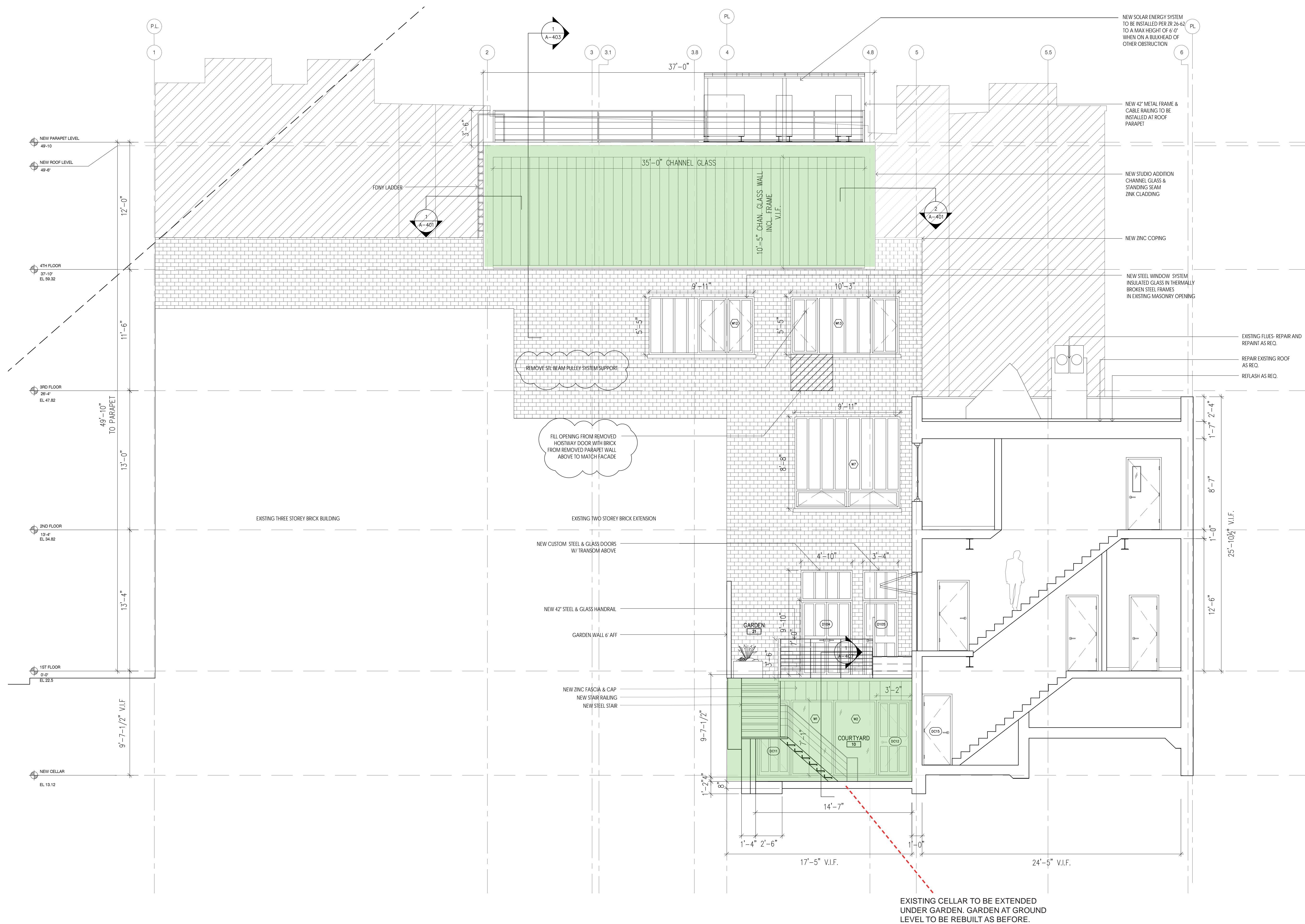
CORNELIA STREET



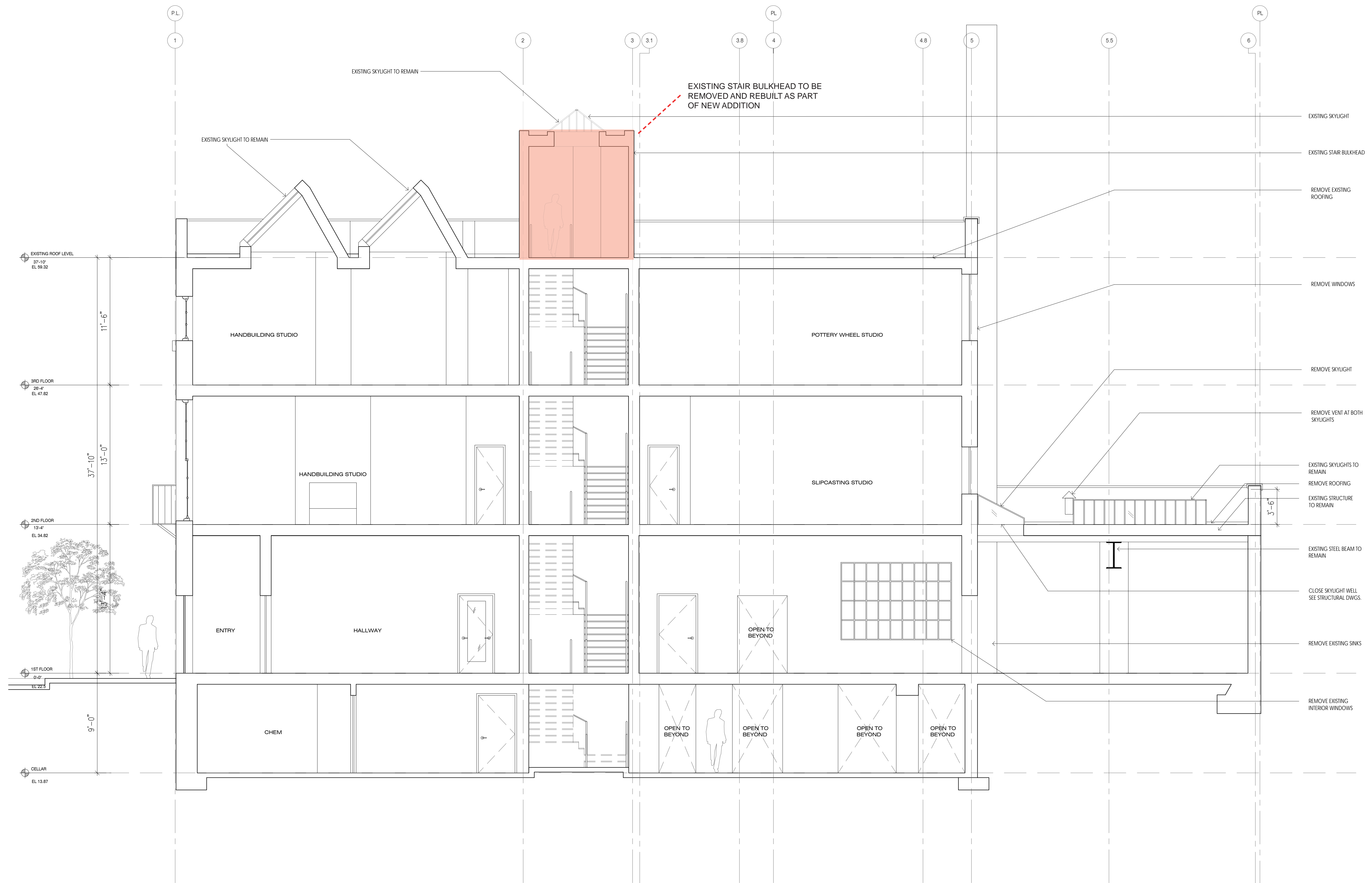
1 PROPOSED PLAN: ROOF SCALE 1/4" = 1'-0"
 TRAVEL DISTANCE:
 4/F EGRESS PATH K: 41'-4" +
 1/F EGRESS PATH A: 51'-1" = 92'-5"

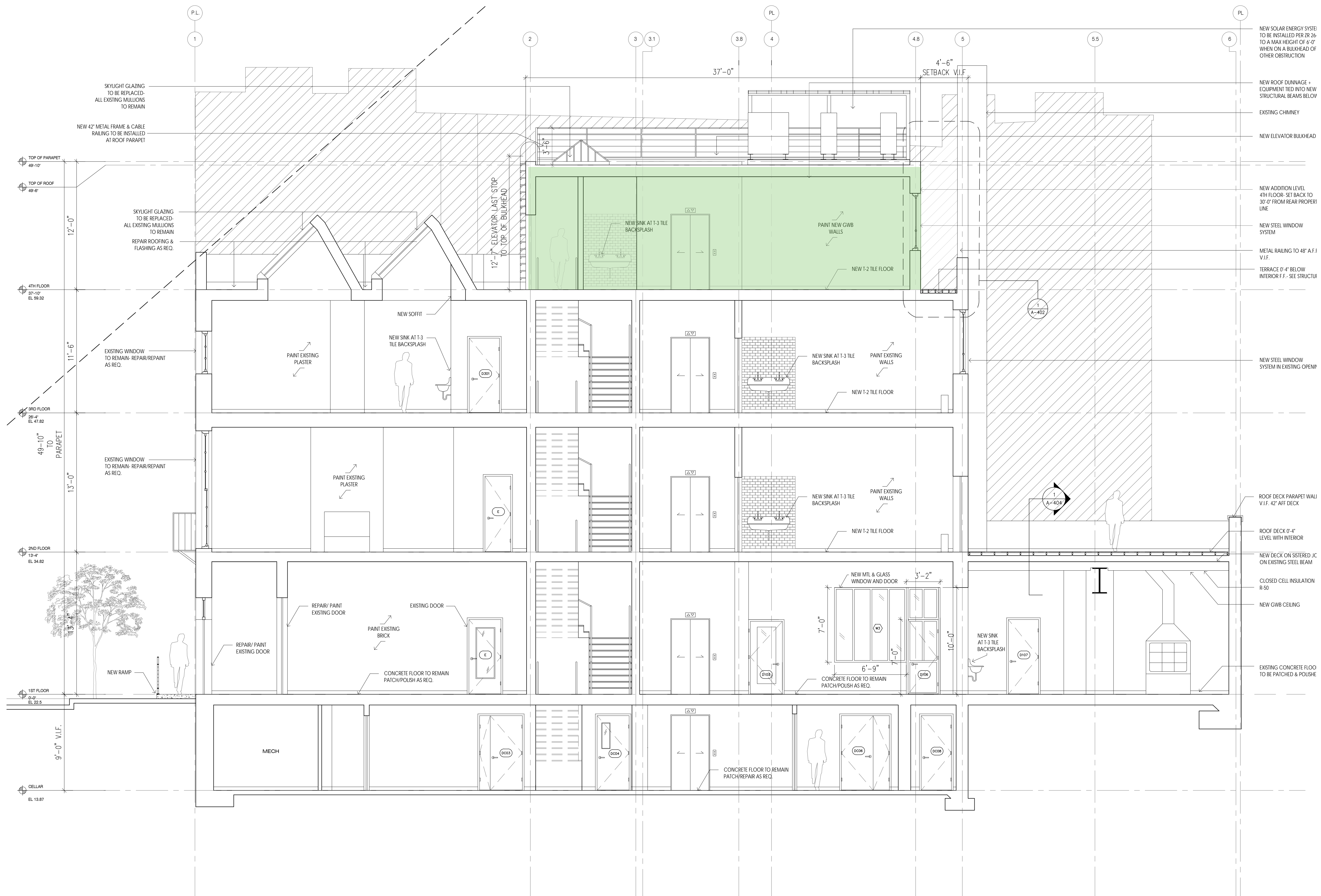
BLEECKER STREET





EXISTING CELLAR TO BE EXTENDED UNDER GARDEN. GARDEN AT GROUND LEVEL TO BE REBUILT AS BEFORE.







Physical Mock Up



Physical Mock Up: View From Street







16 JONES STREET
NEW YORK, NY 10014

OGAWA DEPARDON ARCHITECTS
77 CHAMBERS STREET, 2ND FLOOR
NEW YORK, NY 10007



December 19, 2023
Public Hearing

The current proposal is:

Preservation Department – Item 5, LPC-23-09092

16 Jones Street – Greenwich Village Historic District Extension II Borough of Manhattan

To testify virtually, please join Zoom

Webinar ID: 861 6220 9774

Passcode: 575221

By Phone: 1 646-558-8656 US (New
York) 877-853-5257 (Toll free) US
888 475 4499 (Toll free)

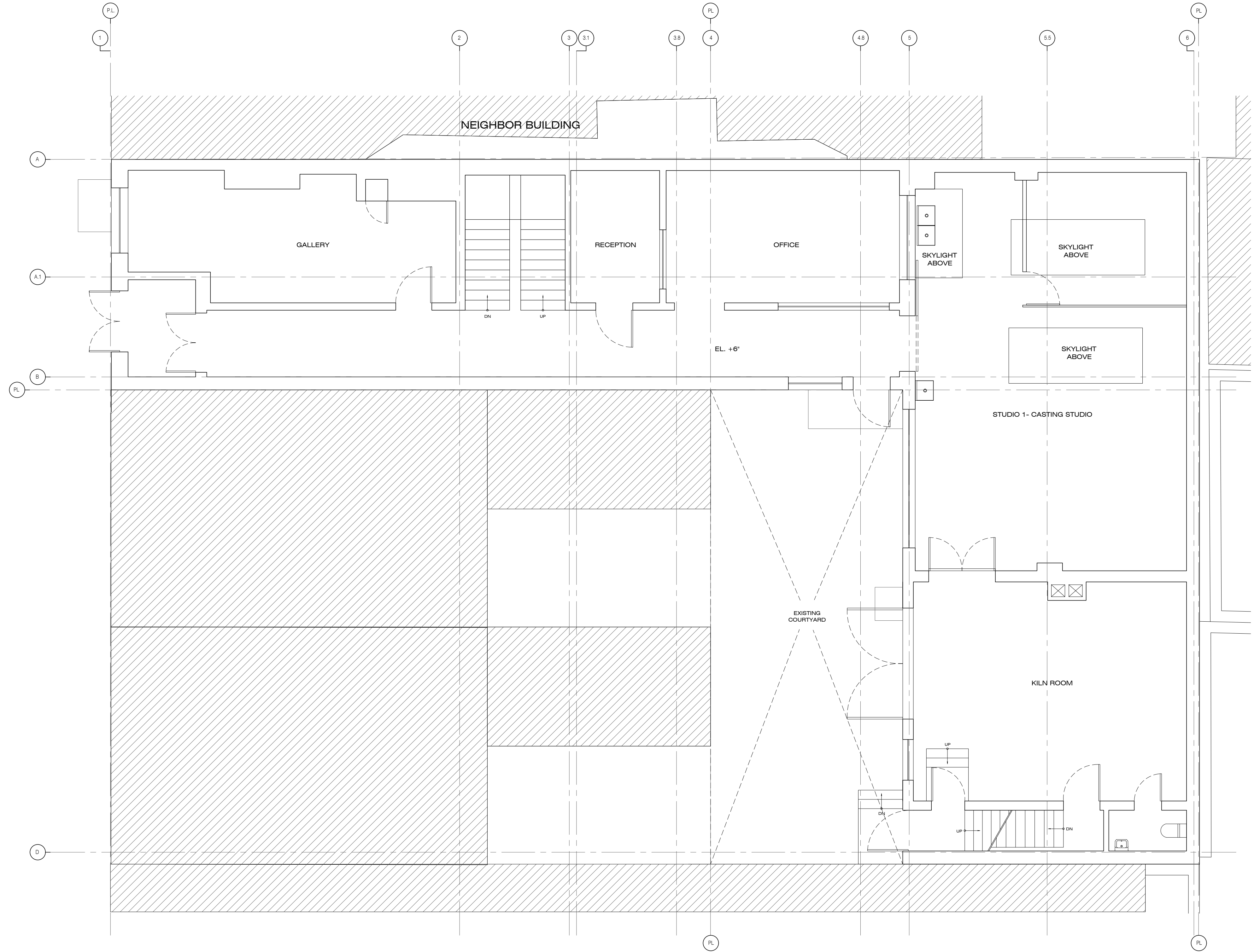
Note: If you want to testify virtually on an item, join the Zoom webinar at the agenda's "Be Here by" time (about an hour in advance). When the Chair indicates it's time to testify, "raise your hand" via the Zoom app if you want to speak (*9 on the phone). Those who signed up in advance will be called first.

APPENDIX

WEST 4TH STREET

JONES STREET

CORNELIA STREET



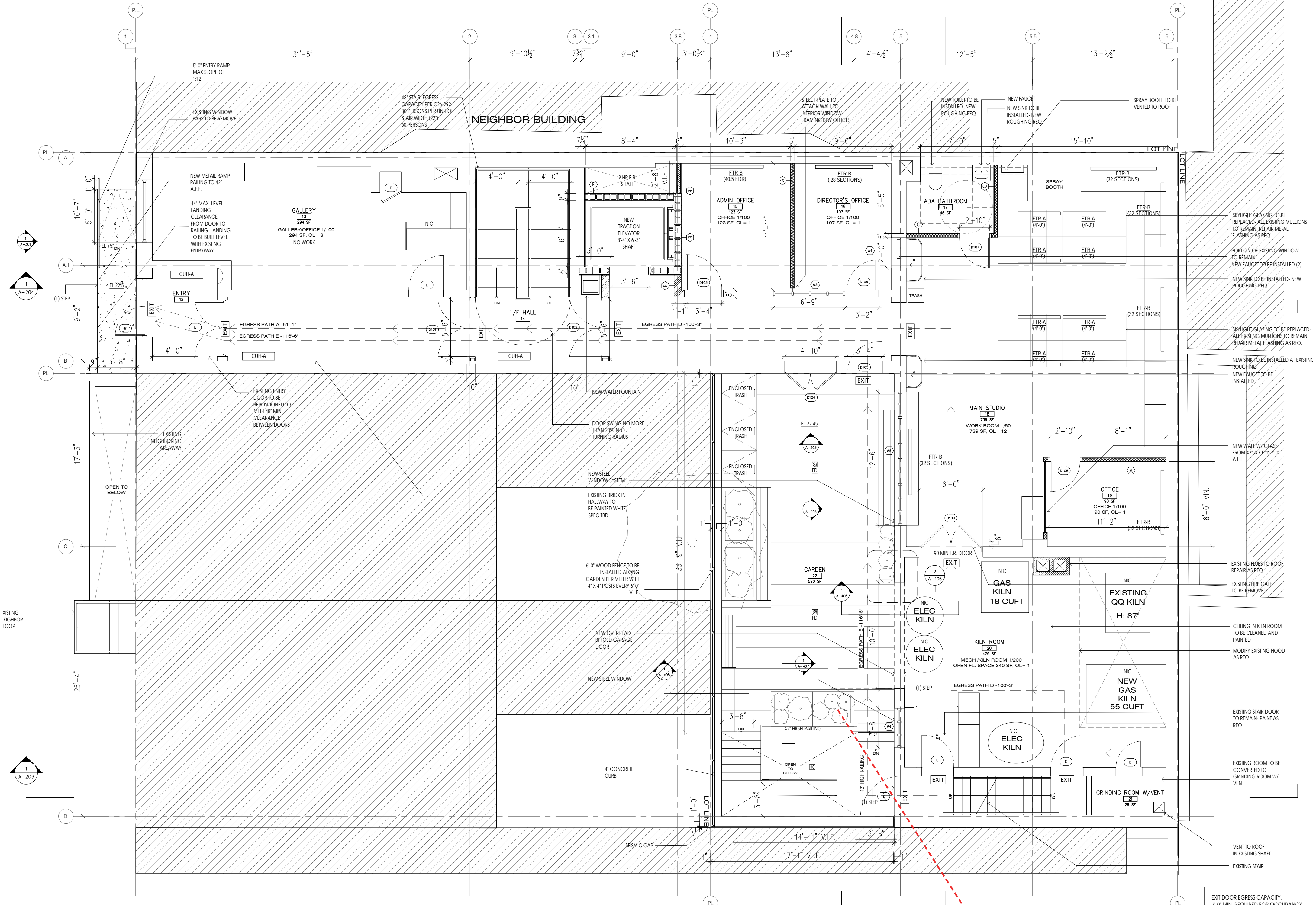
1 EXISTING PLAN - 1/F
1/4" = 1'-0"

BLEECKER STREET

WEST 4TH STREET

JONES STREET

CORNELIA STREET



1 PROPOSED PLAN: 1/F
SCALE 1/4" = 1'-0"

TRAVEL DISTANCE:
1/F EGRESS PATH E: 116'-6"

TRAVEL DISTANCE:
1/F EGRESS PATH D: 100'-3" +
1/F EGRESS PATH A: 51'-1" = 151'-4"

GARDEN AT GROUND LEVEL TO BE RE BUILT AS BEFORE WITH NEW CELLAR EXTENSION BELOW

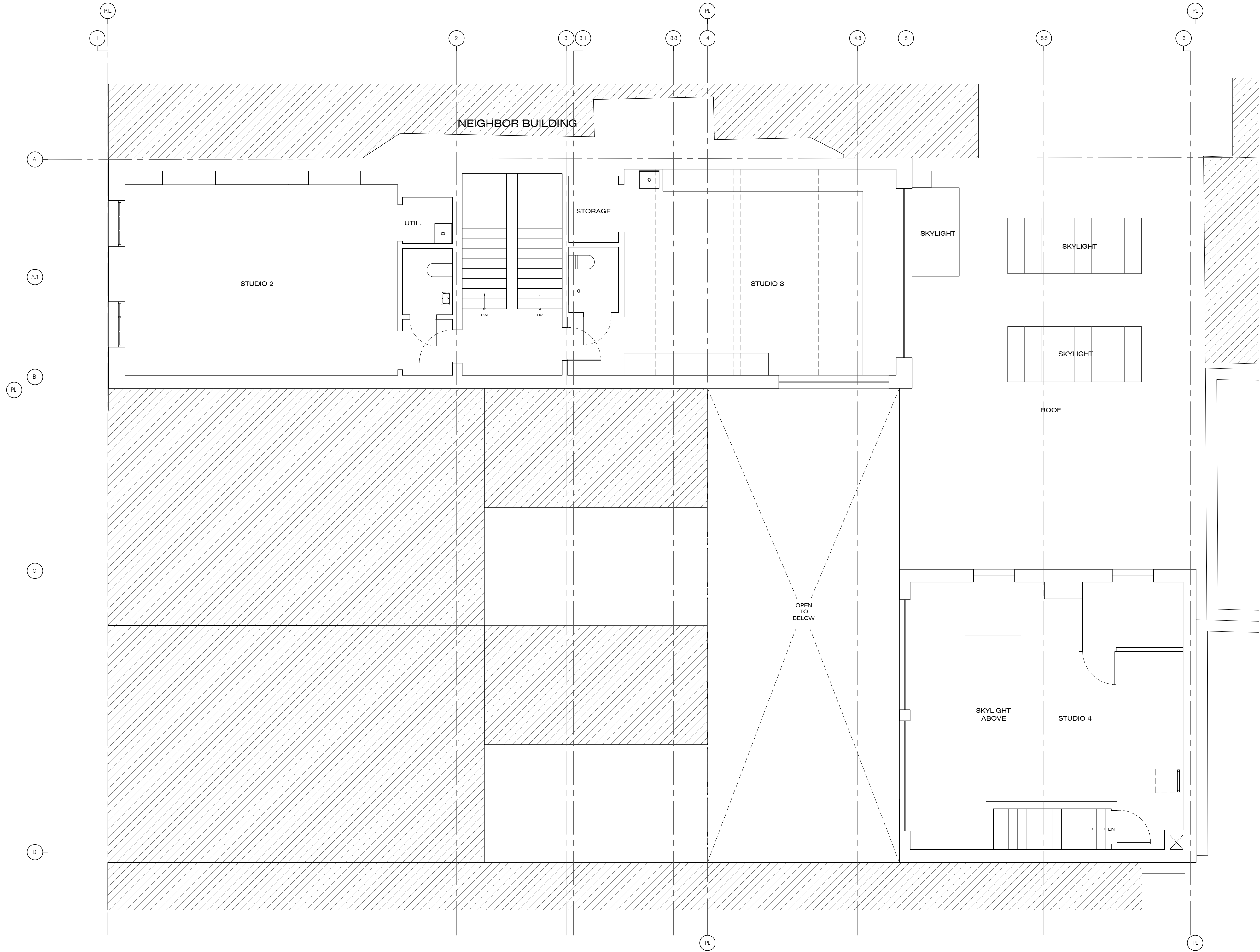
EXIT DOOR EGRESS CAPACITY:
3'-0" MIN. REQUIRED FOR OCCUPANCY LOAD OF 50 OR LESS
1/1 OCCUPANCY LOAD: 19
D101: 4'-0", COMPLY
D102: 4'-0", COMPLY
D103: 3'-4", COMPLY
D109: 6'-0", COMPLY

BLEECKER STREET

WEST 4TH STREET

JONES STREET

CORNELIA STREET



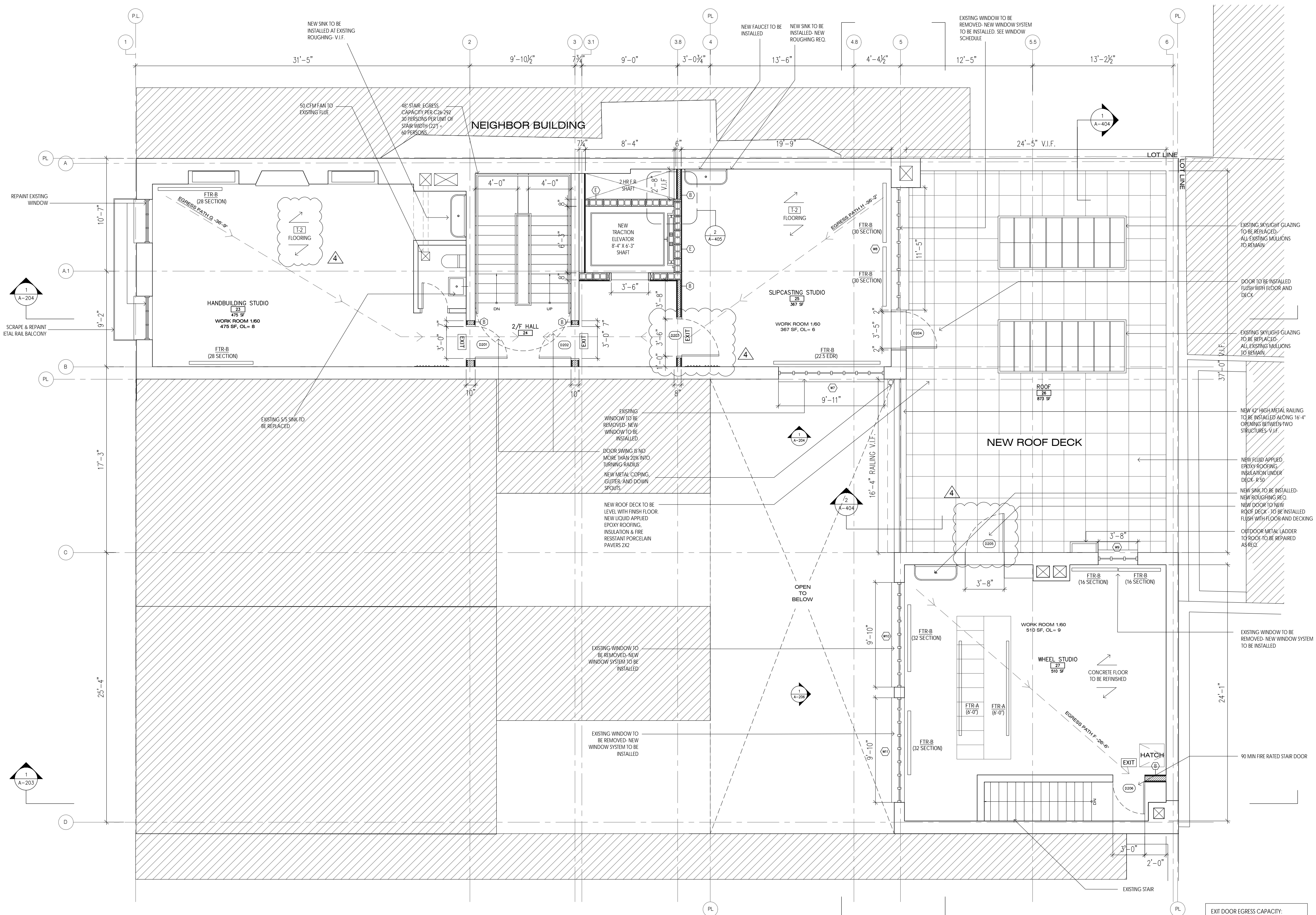
1 EXISTING PLAN - 2/F
1/4" = 1'-0"

BLEECKER STREET

WEST 4TH STREET

JONES STREET

CORNELIA STREET



1 PROPOSED PLAN: 2/F
SCALE 1/4" = 1'-0"

TRAVEL DISTANCE:
2/F EGRESS PATH F: 26'-6" +
1/F EGRESS PATH E: 116'-6" = **143'-0"**

TRAVEL DISTANCE:
2/F EGRESS PATH G: 36'-9" +
1/F EGRESS PATH A: 51'-1" = **87'-10"**

TRAVEL DISTANCE:
2/F EGRESS PATH H: 36'-2" +
1/F EGRESS PATH A: 51'-1" = **87'-3"**

EXIT DOOR EGRESS CAPACITY:
3'-0" MIN. REQUIRED FOR OCCUPANCY
LOADS OF 50 OR LESS
2/F OCCUPANCY LOAD: 23
D201: 3'-0", COMPLY
D202: 3'-0", COMPLY
D206: 3'-0", COMPLY

BLEECKER STREET

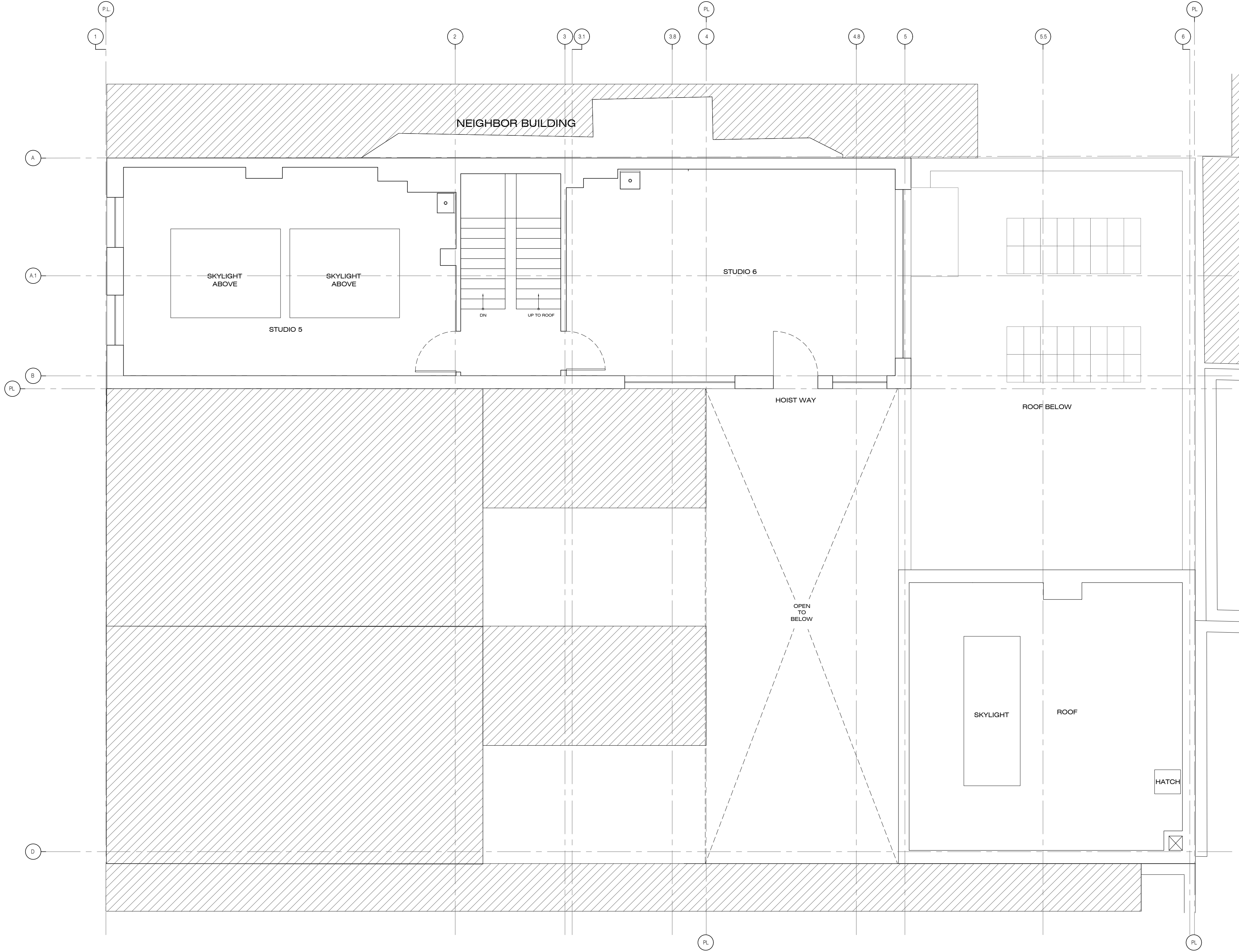
OGAWA DEPARDON ARCHITECTS
77 CHAMBERS STREET, 2ND FLOOR
NEW YORK, NY 10007

16 JONES STREET
NEW YORK, NY 10014

WEST 4TH STREET

JONES STREET

CORNELIA STREET



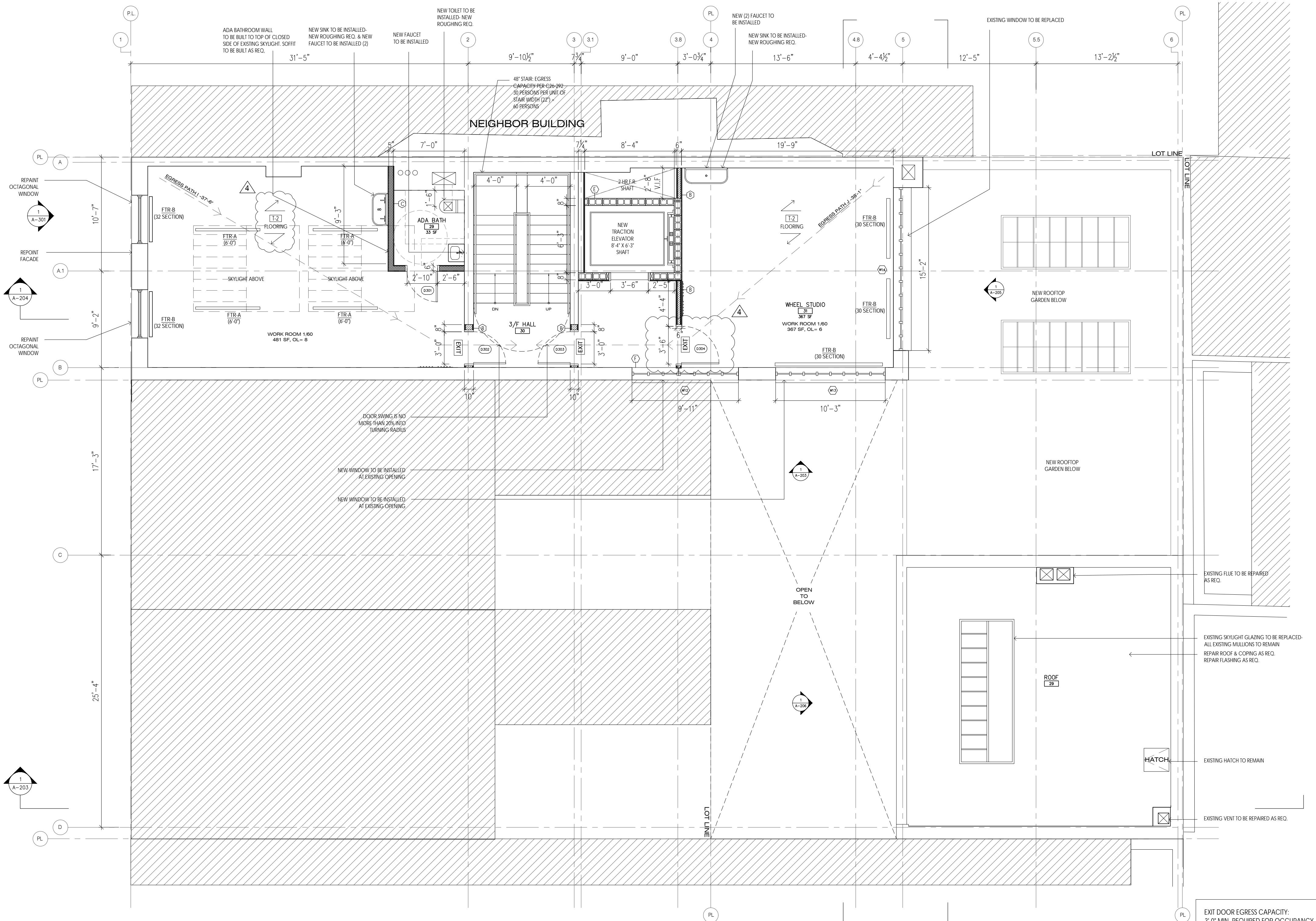
1 EXISTING PLAN - 3/F
1/4" = 1'-0"

BLEECKER STREET

WEST 4TH STREET

JONES STREET

CORNELIA STREET



1 PROPOSED PLAN: 3/F
 SCALE 1/4" = 1'-0"

TRAVEL DISTANCE:
 3/F EGRESS PATH I: 37'-6" +
 1/F EGRESS PATH A: 51'-1" = **88'-7"**

TRAVEL DISTANCE:
 3/F EGRESS PATH J: 38'-1" +
 1/F EGRESS PATH A: 51'-1" = **89'-2"**

EXIT DOOR EGRESS CAPACITY:
 3'-0" MIN. REQUIRED FOR OCCUPANCY
 LOAD OF 50 OR LESS
 3/F OCCUPANCY LOAD: 14

D302: 3'-0", COMPLY
 D303: 3'-0", COMPLY
 D304: 4'-0", COMPLY

BLEECKER STREET

December 19, 2023
Public Hearing

The current proposal is:

Preservation Department – Item 5, LPC-23-09092

16 Jones Street – Greenwich Village Historic District Extension II Borough of Manhattan

To testify virtually, please join Zoom

Webinar ID: 861 6220 9774

Passcode: 575221

By Phone: 1 646-558-8656 US (New
York) 877-853-5257 (Toll free) US
888 475 4499 (Toll free)

Note: If you want to testify virtually on an item, join the Zoom webinar at the agenda's "Be Here by" time (about an hour in advance). When the Chair indicates it's time to testify, "raise your hand" via the Zoom app if you want to speak (*9 on the phone). Those who signed up in advance will be called first.