

February 28, 2023
Public Hearing

The current proposal is:

Preservation Department – Item 4, LPC-23-06119

Prospect Park – Lower Vale, Vale of Cashmere – Scenic Landmark Borough of Brooklyn

To Testify Please Join Zoom

Webinar ID: 828 8985 6536

Passcode: 534310

By Phone: 1 646-558-8656 US (New York)

877-853-5257 (Toll free) US

888 475 4499 (Toll free)

Note: If you want to testify on an item, join the Zoom webinar at the agenda's "Be Here by" time (about an hour in advance). When the Chair indicates it's time to testify, "raise your hand" via the Zoom app if you want to speak (*9 on the phone). Those who signed up in advance will be called first.



Parks

B073-322M Lower Vale Restoration

Located Southeast of Grand Army Plaza and East of East Drive in Prospect Park, Borough of Brooklyn.

Landmark Preservation Hearing
February 28, 2023
Prospect Park Alliance

Total Budget: \$10m Mayoral Funding

Project Size: 1 ac



Brooklyn

City

2 MI



Prospect Park

Neighborhood

1000 FT



Site

Google

Site

500 FT

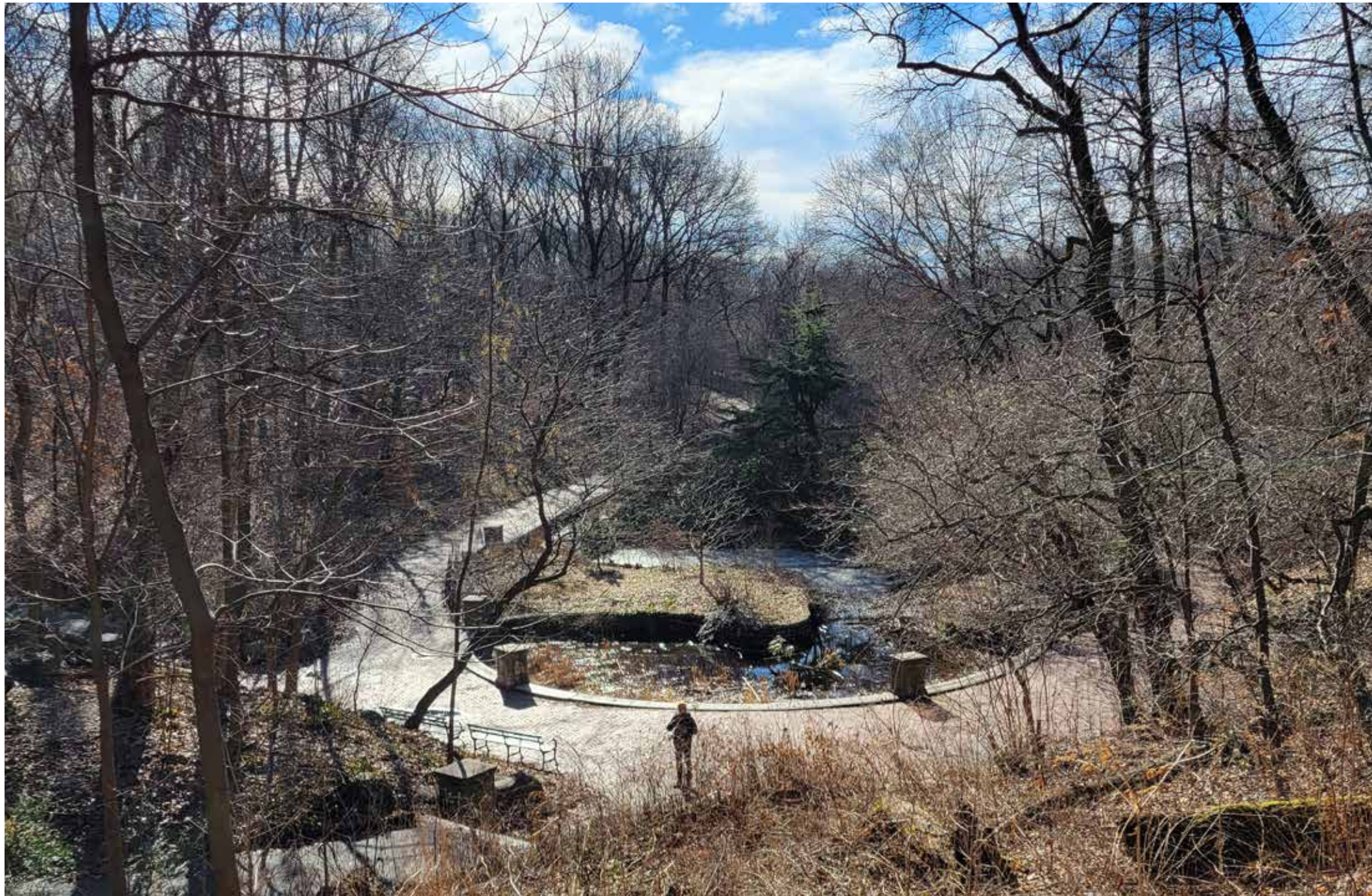


NYC Parks



Prospect
Park
Alliance

Prospect Park
Lower Vale | Project Location



NYC Parks



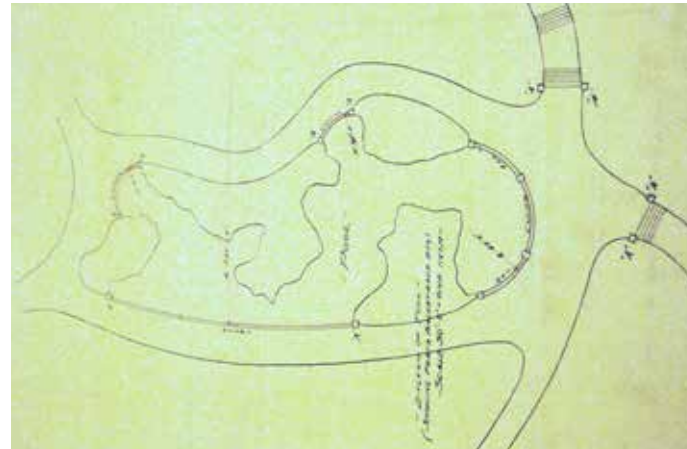
Prospect
Park
Alliance

Prospect Park
Lower Vale | Project Location



1866 - 1874

Olmsted & Vaux



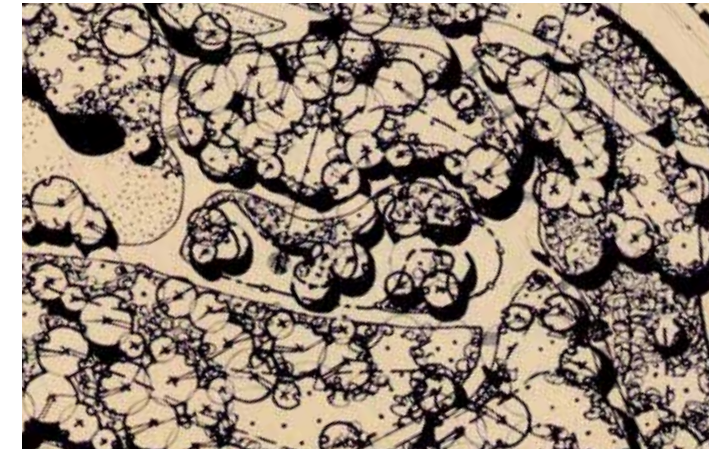
1889 - 1905

McKim, Mead &
White



1935

WPA Restoration



1966 & 1980

Coffey & Levine Design
and Volunteer Restoration





1 - Leaning / failing cobble wall



2 - Failing cobble wall



NYC Parks



Prospect Park
Lower Vale | Existing Conditions





3 - Granite edge damaged & shifting

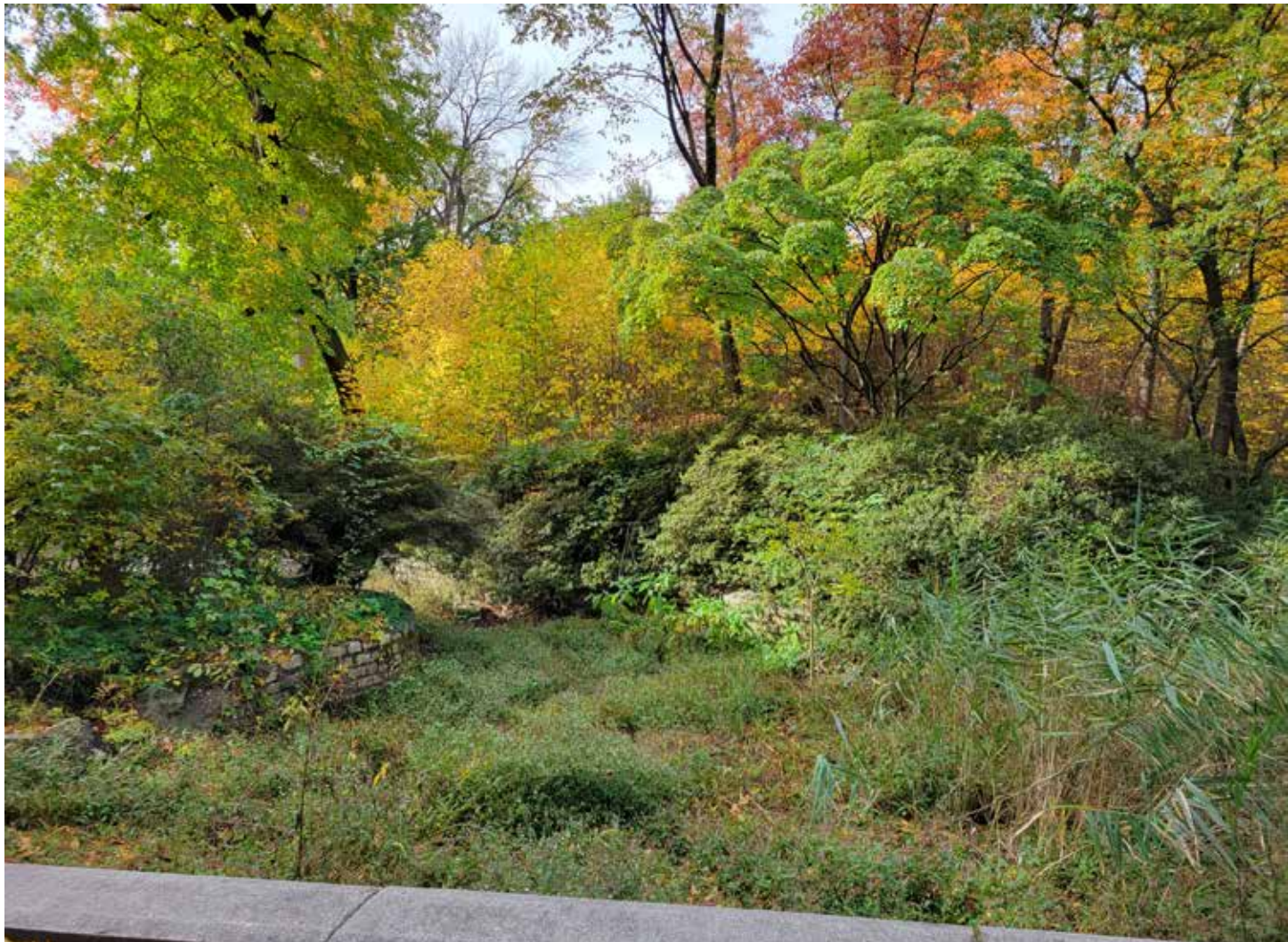


4 - Missing balustrade, damaged piers and invasive plant material in pond



Prospect Park
Lower Vale | Existing Conditions



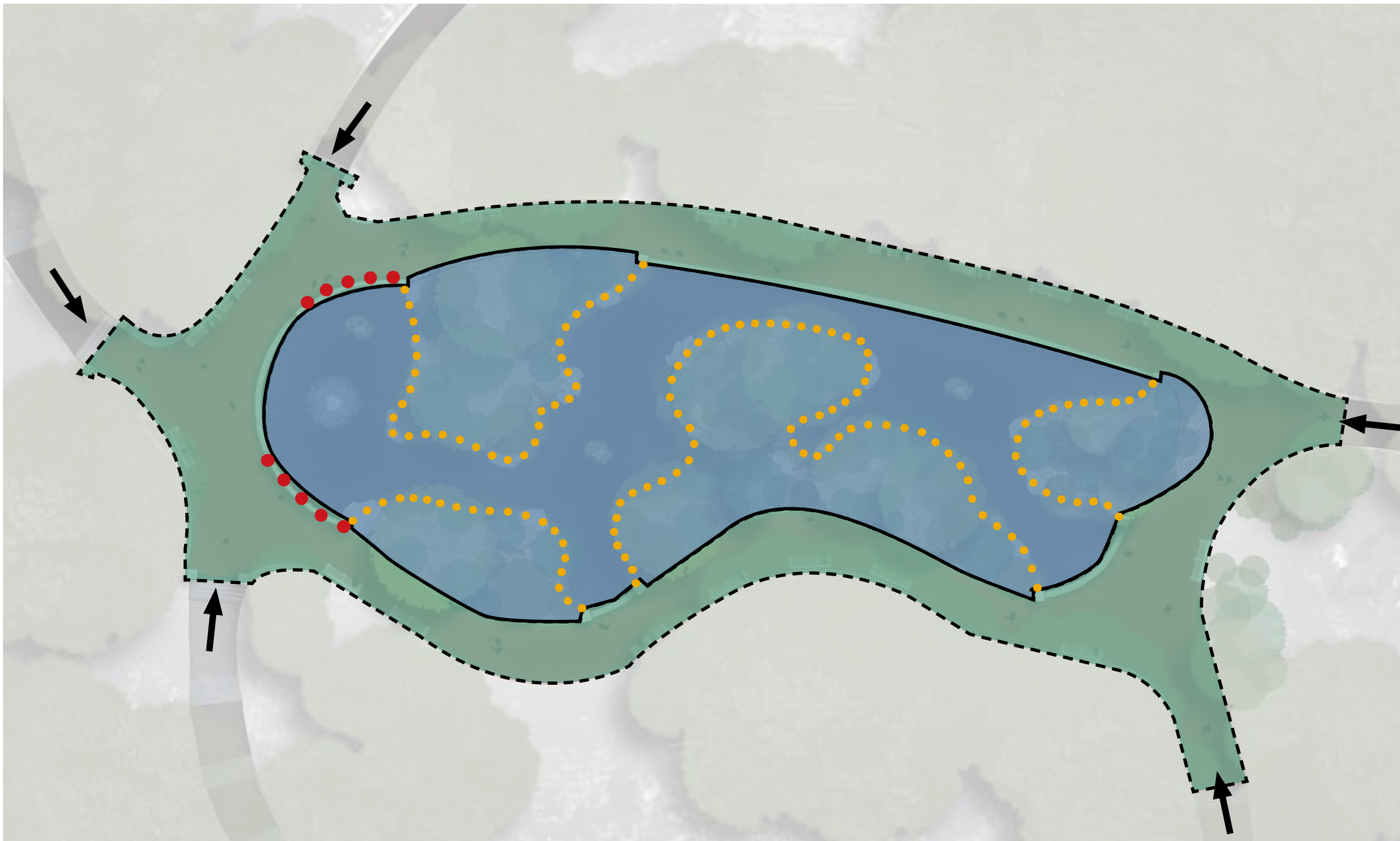


5 - Overgrown invasive plant material in pond



6 - Damaged fencing



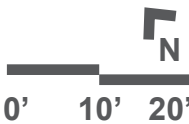


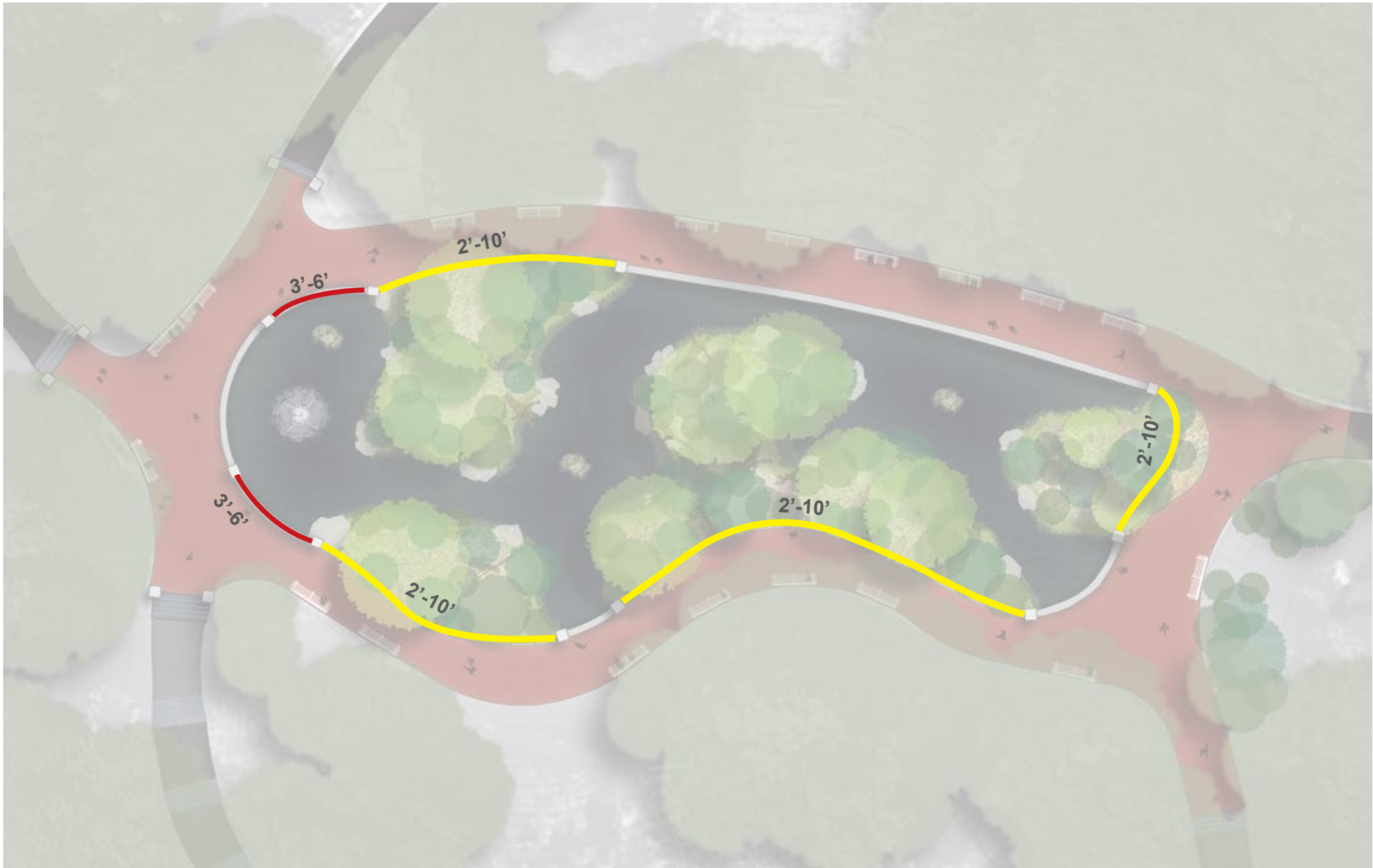
Legend

- ← Entrance to Lower Vale
- Missing Elements to be Reconstructed
 - • • • - Marble Ballustrade (MMW)
 - • • • - Natural Edge (O&V)
- Elements to be Restored - McKim, Mead & White (MMW)
 - Brick Paving (1920s)
 - Pond Edge Coping & Pillars
 - Pillars at Granite Steps
- Elements to be Restored - Olmsted & Vaux (O&V)
 - Clay Lined Pond
 - Peninsula Plantings



Prospect Park Lower Vale | Preservation Diagram



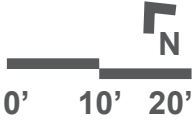


Legend

- 2' - 10" HT
Steel fence
- 3' - 6" HT
Marble balustrade



Prospect Park Lower Vale | Fence Diagram





1 - Vertical steel pickets with single top rail



Existing Conditon



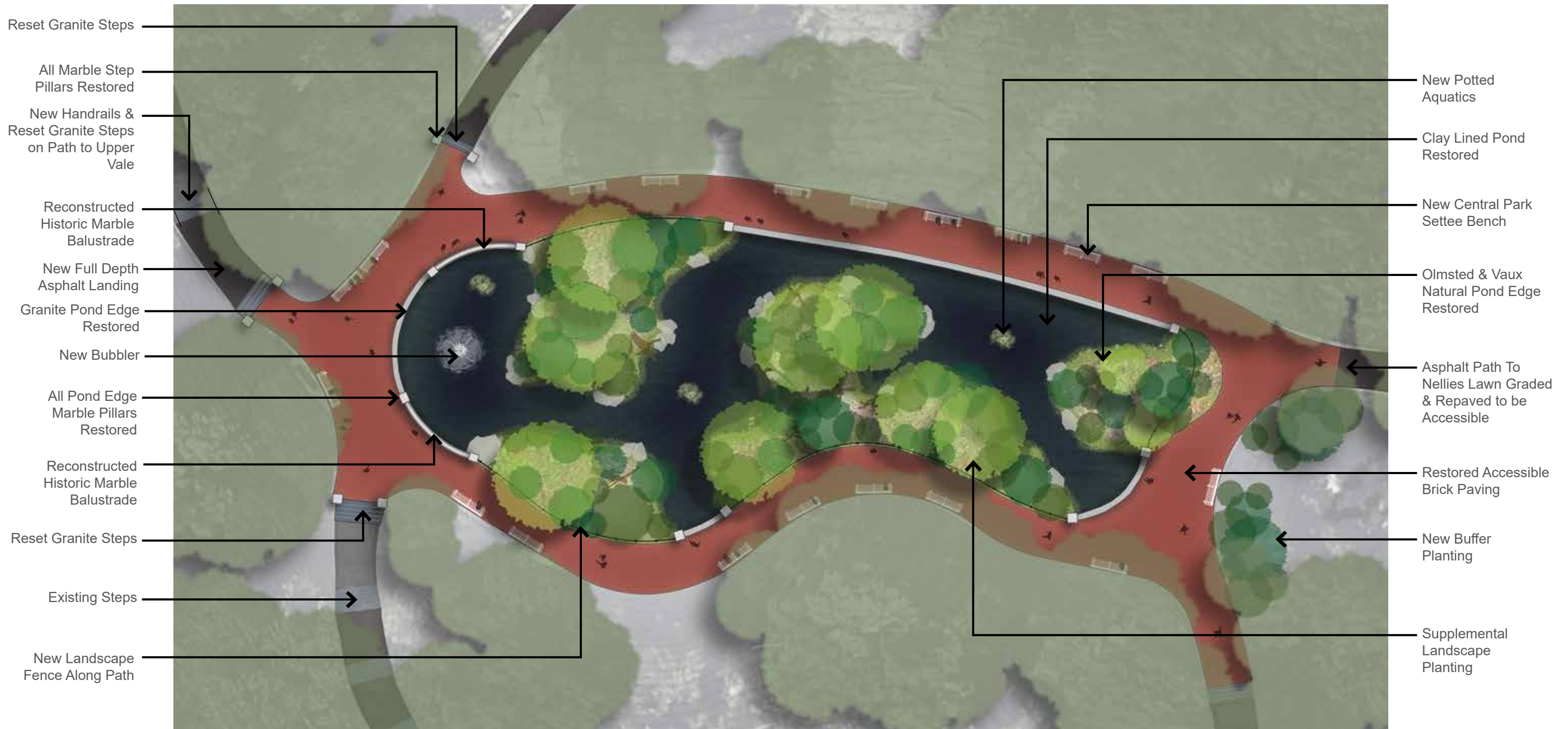
NYC Parks



Prospect Park
Lower Vale | Fence Concept (Center on Pier)



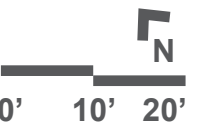




NYC Parks



Prospect Park Lower Vale | Schematic Plan



Appendix



Site Security Lighting - B9 Pole



Central Park Settee



Waste Receptacle



Simple Steel Handrail (Riverside Park)



Restored Existing Brick Pavement with Permeable Joints



Fencing



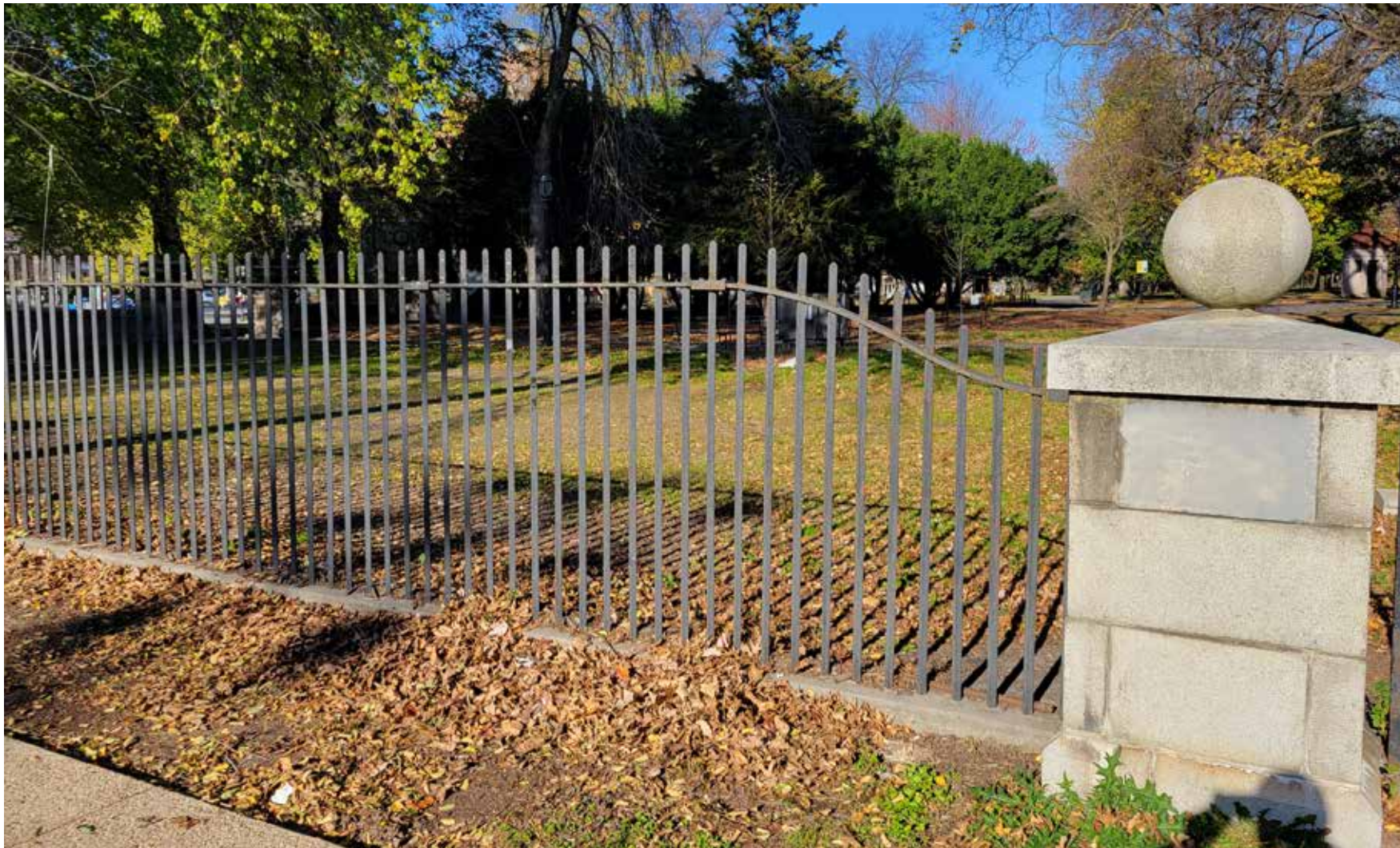
Full Depth Asphalt Pavement and Timber Edge



NYC Parks



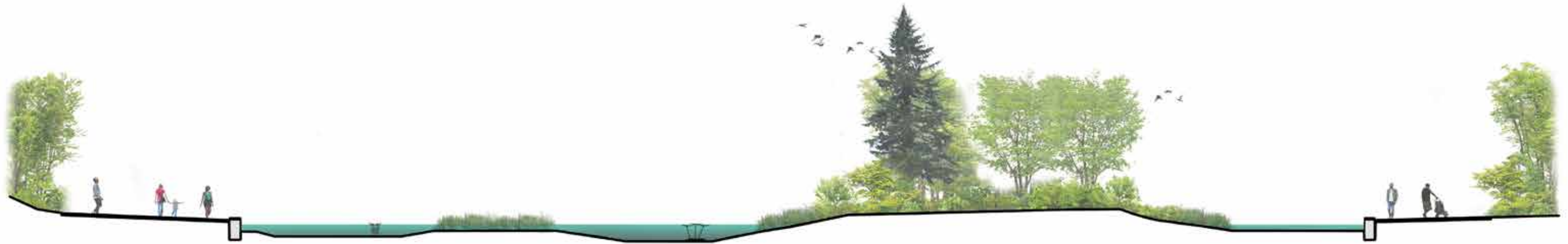
Prospect Park
Lower Vale | Site Furnishing



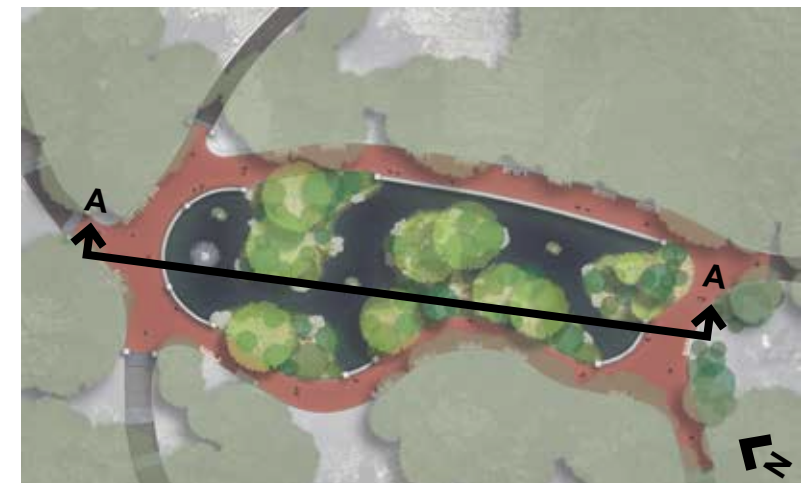
Fence with pier along Parkside Avenue (MMW)

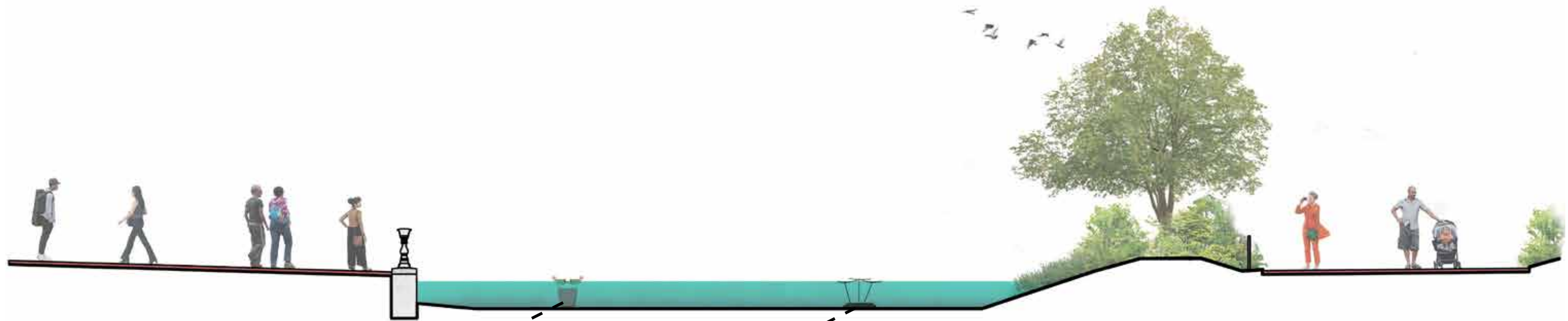


Fence profile at pier

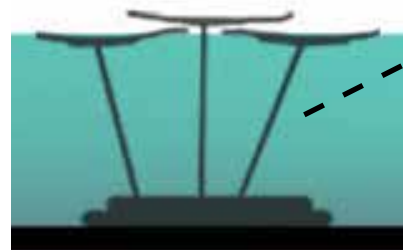


Prospect Park
Lower Vale | Section A

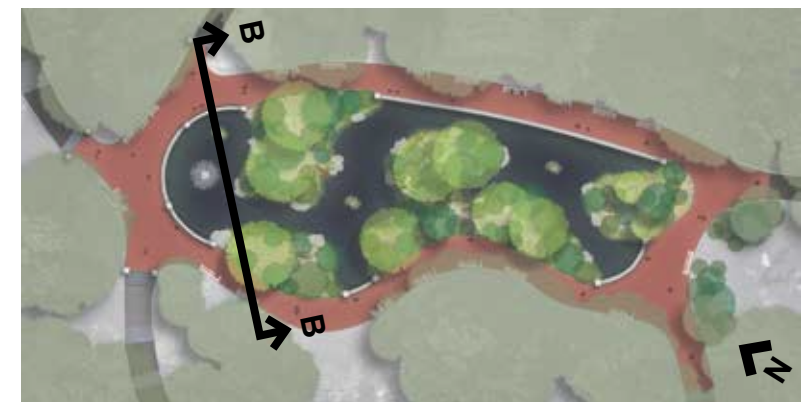


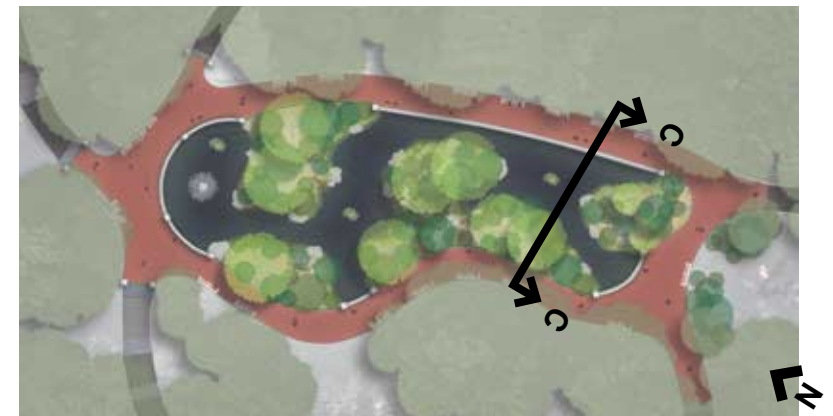
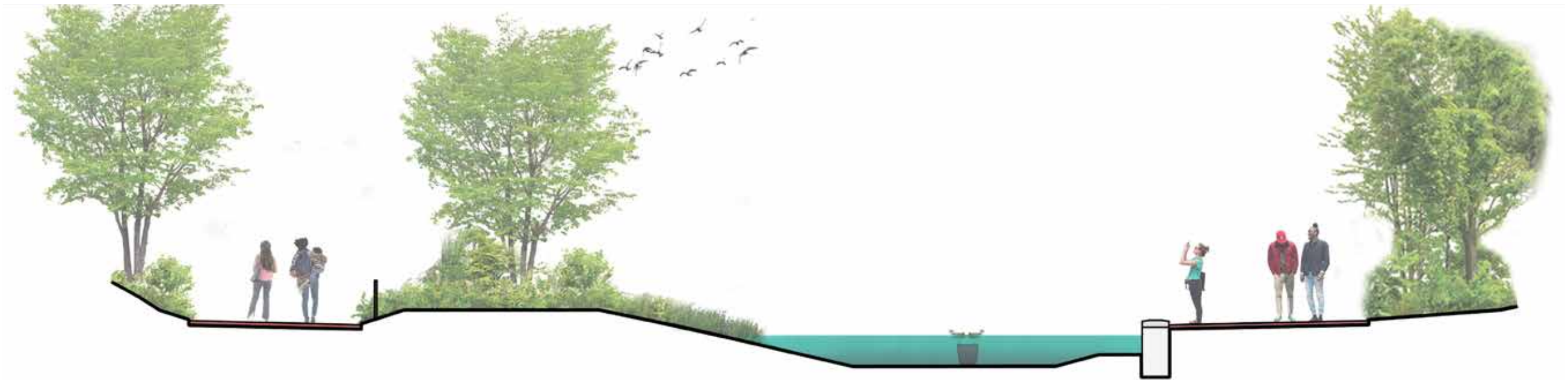
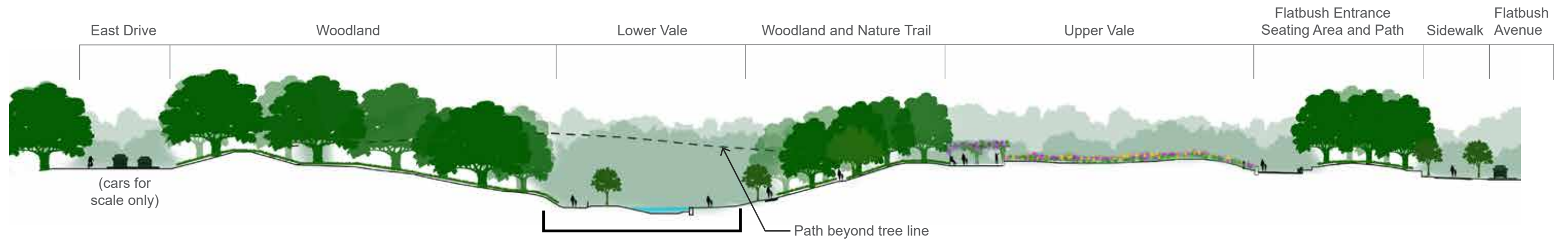


TYPICAL PLANTER



TYPICAL BIRD BATH







Autumn Fern
Dryopteris erythrosora



Christmas Fern
Polystichum acrosticoides



Pennsylvania Sedge
Carex pennsylvanica



Swamp Milkweed
Aesclepias incarnata



White Water Lily
Nymphaea odorata



Buttonbush
Cephalanthus occidentalis



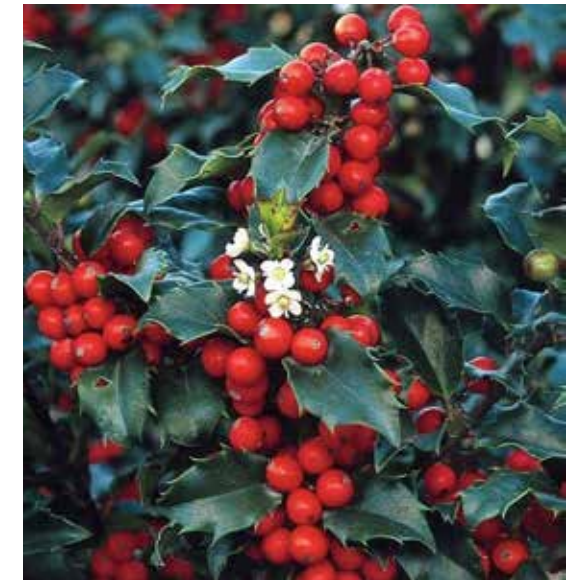
Juddi Viburnum
Viburnum juddii



Henry's Garnet Virginia Sweetspire
Itea virginica 'Henry's Garnet'



Blue Prince Holly
Ilex x meserveae 'Blue Prince'



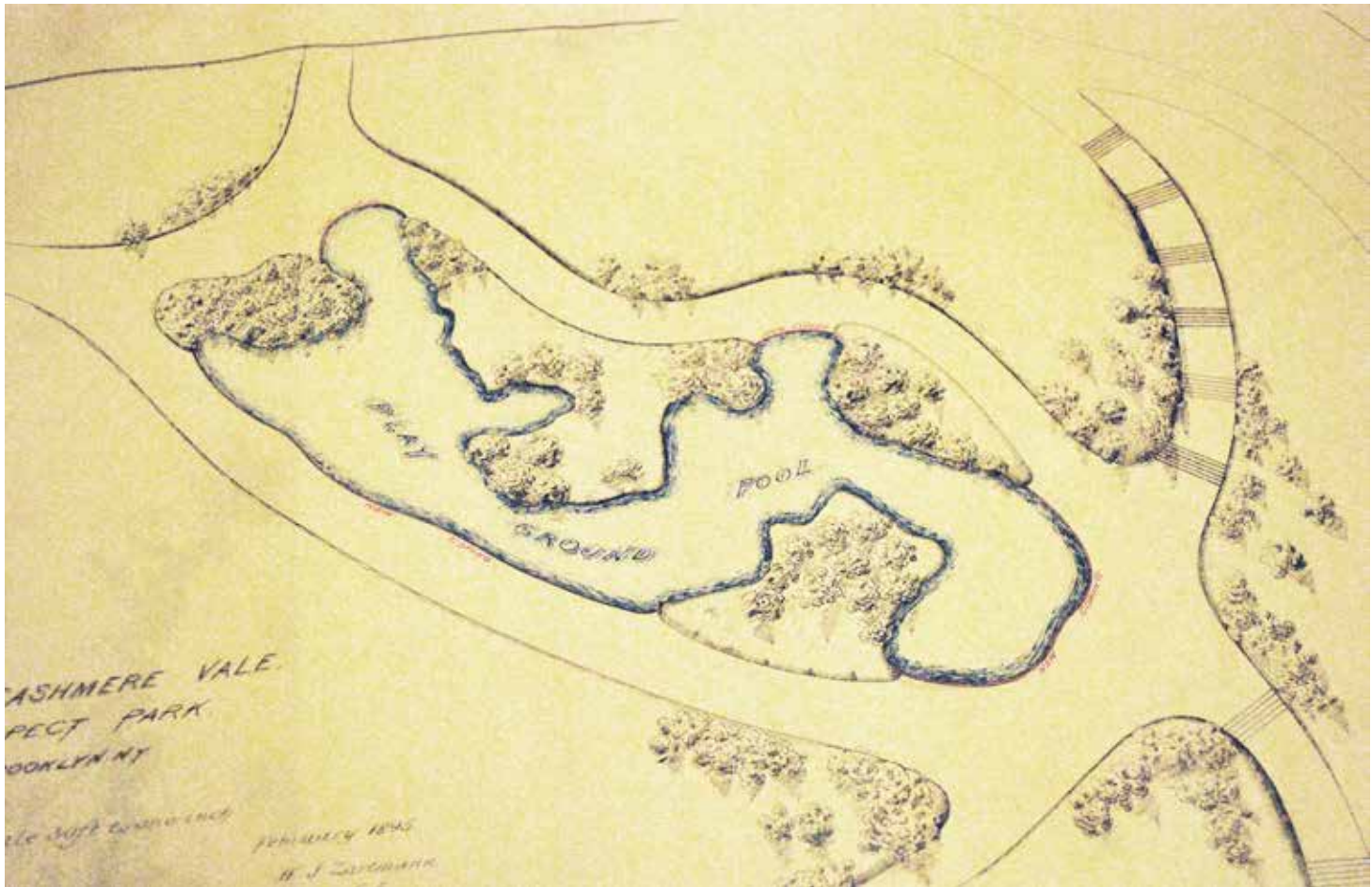
Blue Princess Holly
Ilex x meserveae 'Blue Princess'



NYC Parks



Prospect Park
Lower Vale | Plant Palette



1 - Olmsted design marked up by McKim Mead and White



2 - McKim, Mead & White design showing location of coping and pier additions





1866 - 1874

Olmsted & Vaux



1889 - 1905

McKim, Mead &
White



1935, 1966 & 1980

WPA, Coffey & Levine Design
and Volunteer Restoration





1866 - 1874

Olmsted & Vaux



1889 - 1905

McKim, Mead &
White



1935, 1966 & 1980

WPA, Coffey & Levine Design
and Volunteer Restoration



NYC Parks



Prospect Park

Lower Vale | Historic Evolution of the Childrens Pond Edge & Benches

Goals

- Restore existing and missing historical architectural elements.
- Restore the pond floor and natural shorelines.
- Incorporate elements that support habitat for the migratory birds that use the area.
- Remove invasive species and restore landscape peninsulas with more pollinator planting.
- Improve ADA accessibility and pavement conditions.
- Ensure the vegetated peninsulas are protected.



February 28, 2023
Public Hearing

The current proposal is:

Preservation Department – Item 4, LPC-23-06119

Prospect Park – Lower Vale, Vale of Cashmere – Scenic Landmark Borough of Brooklyn

To Testify Please Join Zoom

Webinar ID:828 8985 6536

Passcode: 534310

By Phone: 1 646-558-8656 US (New York)

877-853-5257 (Toll free) US

888 475 4499 (Toll free)

Note: If you want to testify on an item, join the Zoom webinar at the agenda’s “Be Here by” time (about an hour in advance). When the Chair indicates it’s time to testify, “raise your hand” via the Zoom app if you want to speak (*9 on the phone). Those who signed up in advance will be called first.