

The current proposal is:

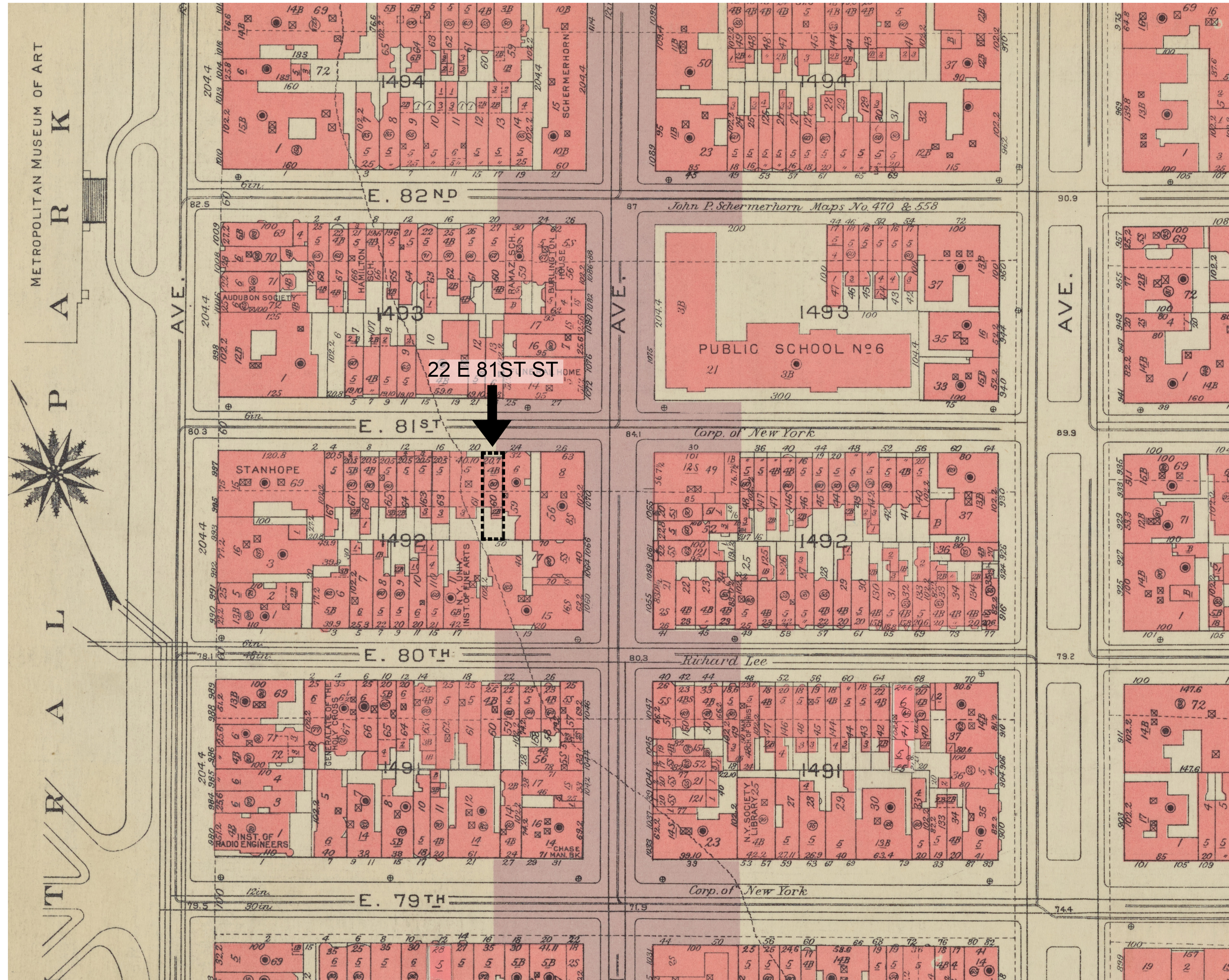
Preservation Department – Item 10, LPC-22-11297

22 East 81st Street – Metropolitan Museum Historic District
Borough of Manhattan

Note: this is a Public Meeting item. No public testimony will be received today as the hearing on this item is closed

22 E 81ST STREET





22 E 81ST ST - PROJECT LOCATION - BROMLEY MAP 1955-56





1 22 E 81 ST - 1940 TAX PHOTO
Scale N.T.S.



2 22 E 81ST ST - 1980 TAX PHOTO
Scale N.T.S.







1 156 E 62ND ST- PRECEDENT
Scale N.T.S.



2 31 E 63RD ST- PRECEDENT
Scale N.T.S.

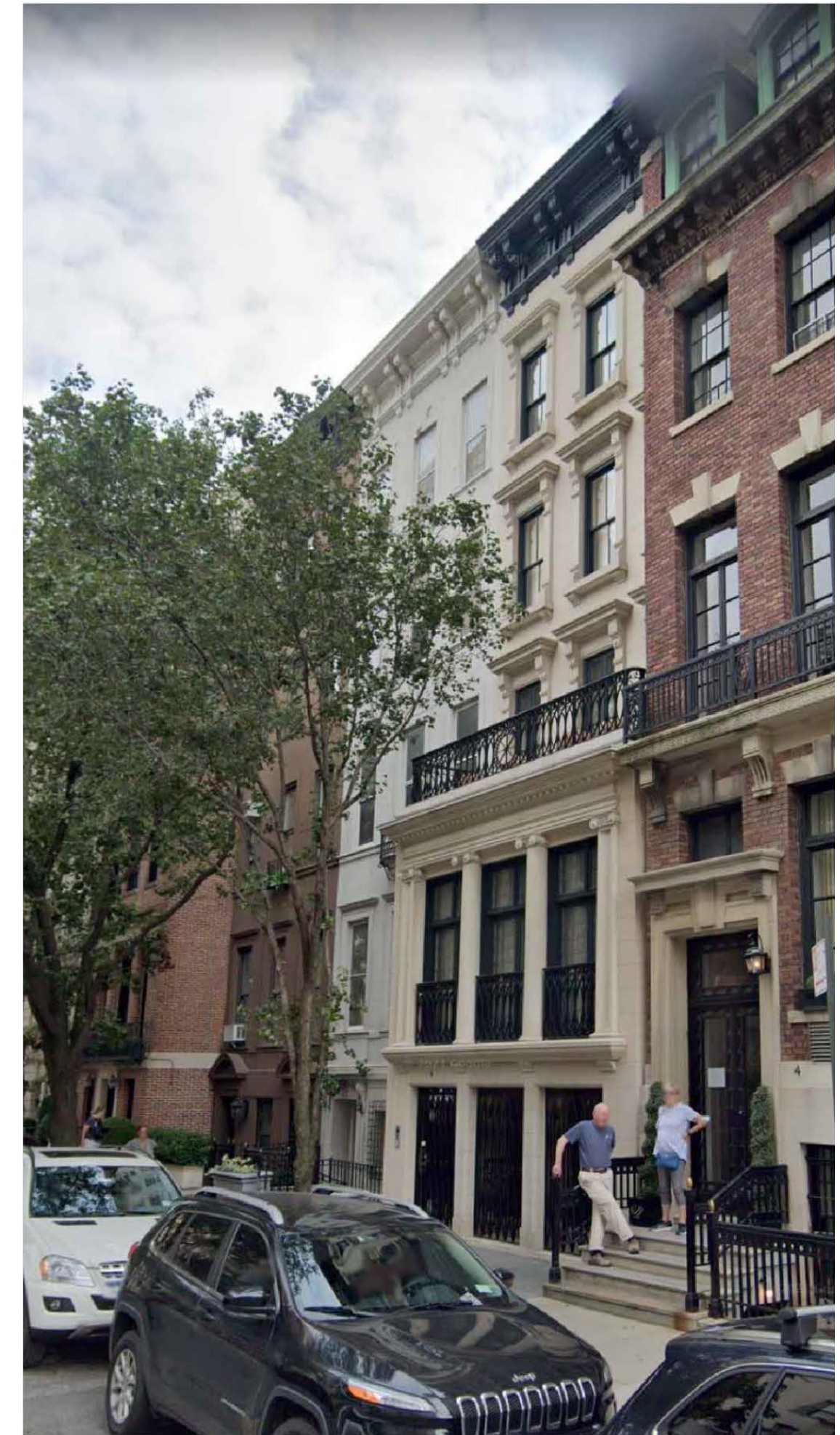




1 21-23 E 81ST ST - LIMESTONE FACADES
Scale N.T.S.

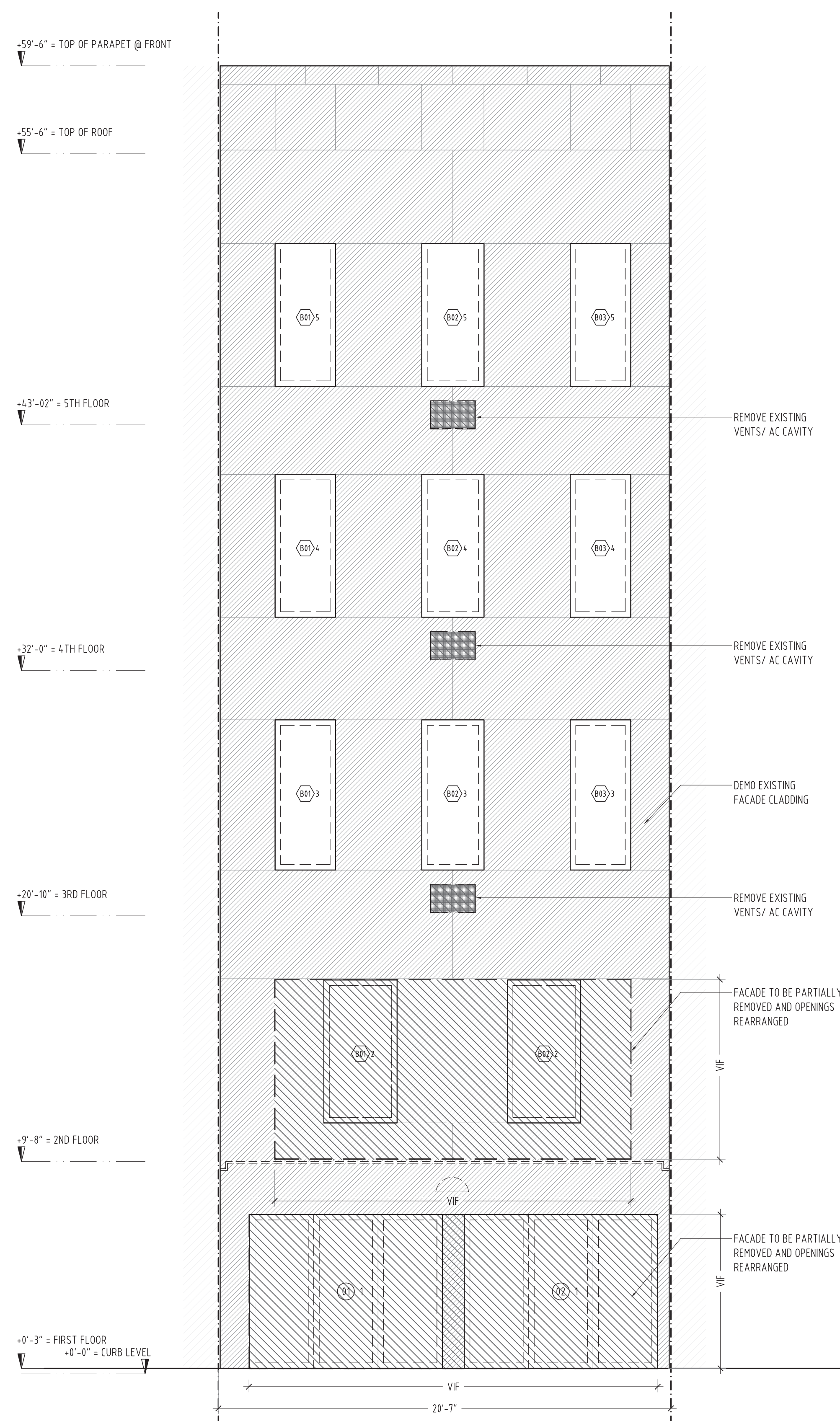


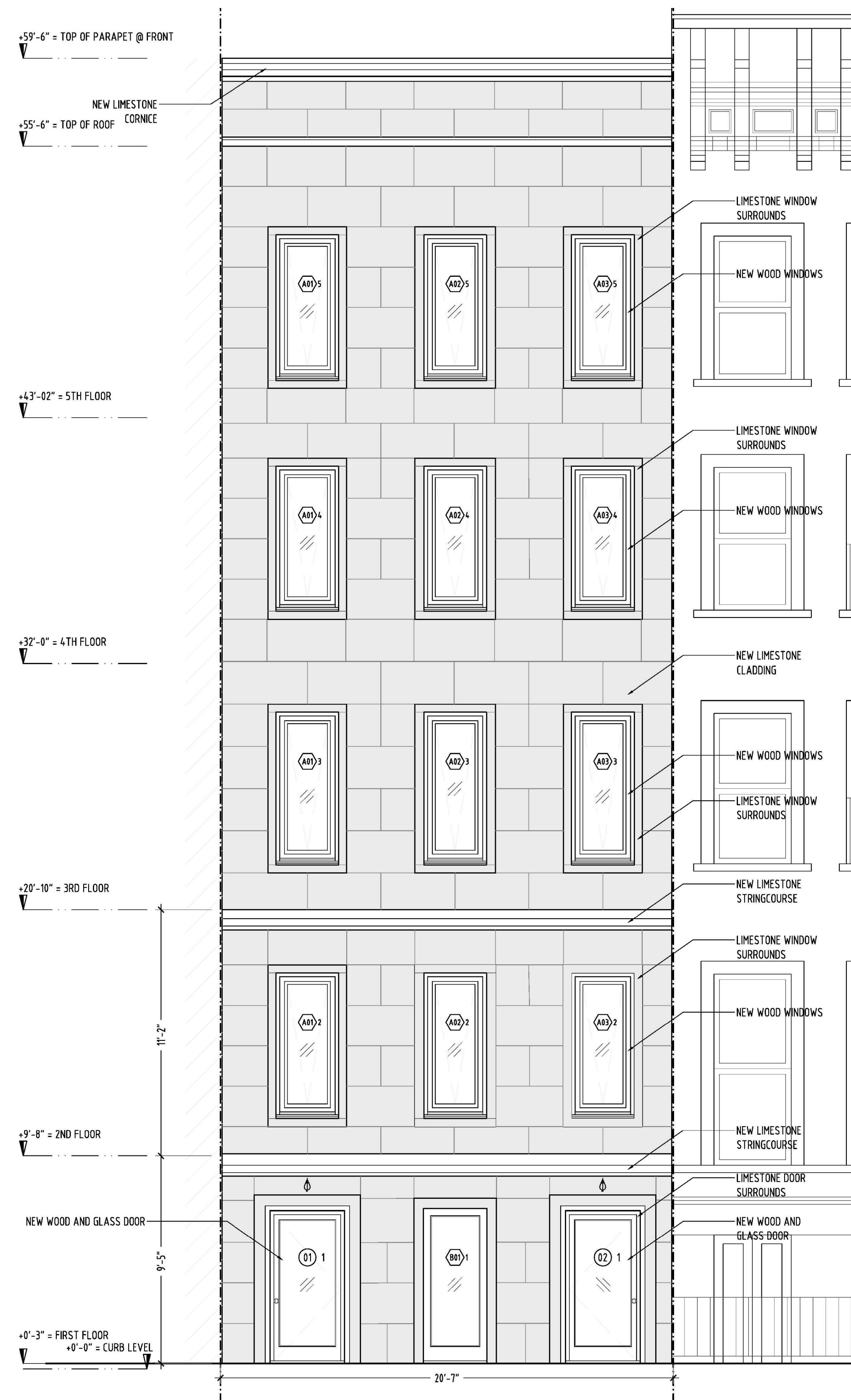
2 14-18 E 81ST ST - LIMESTONE FACADES
Scale N.T.S.



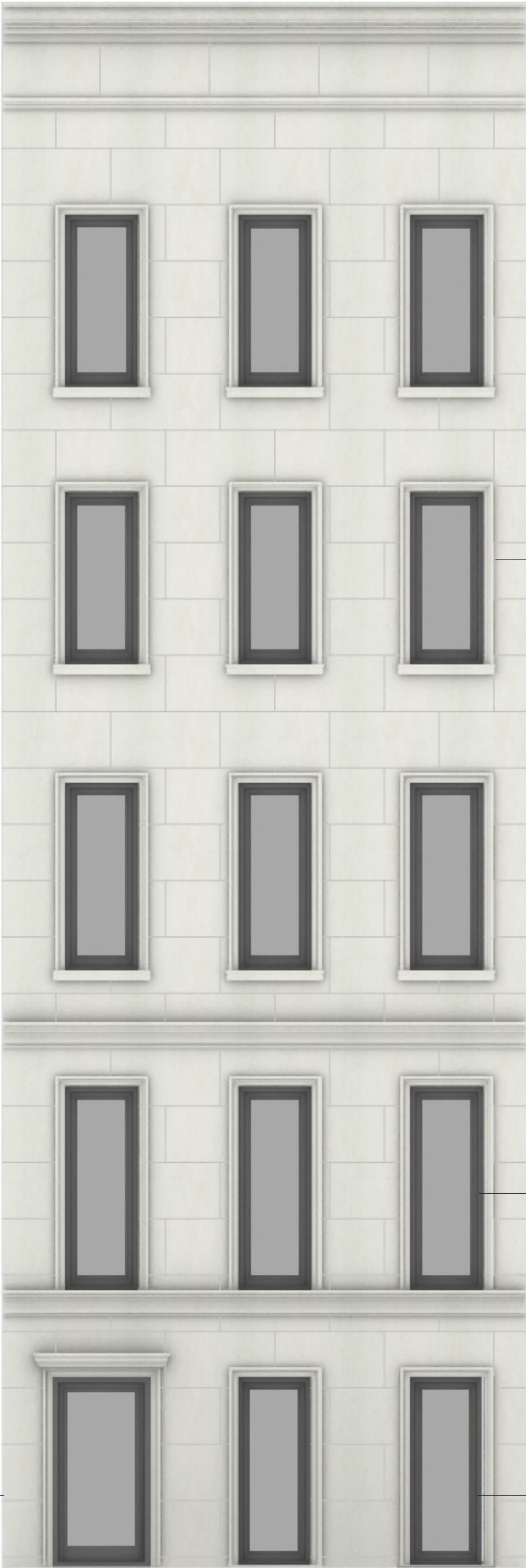
3 6 E 81ST ST - LIMESTONE FACADES
Scale N.T.S.







ONE DOOR IS VISUALLY
HIGHLIGHTED AS MAIN
ENTRANCE



MORE PROTRUDING AND
DETAILED CORNICE

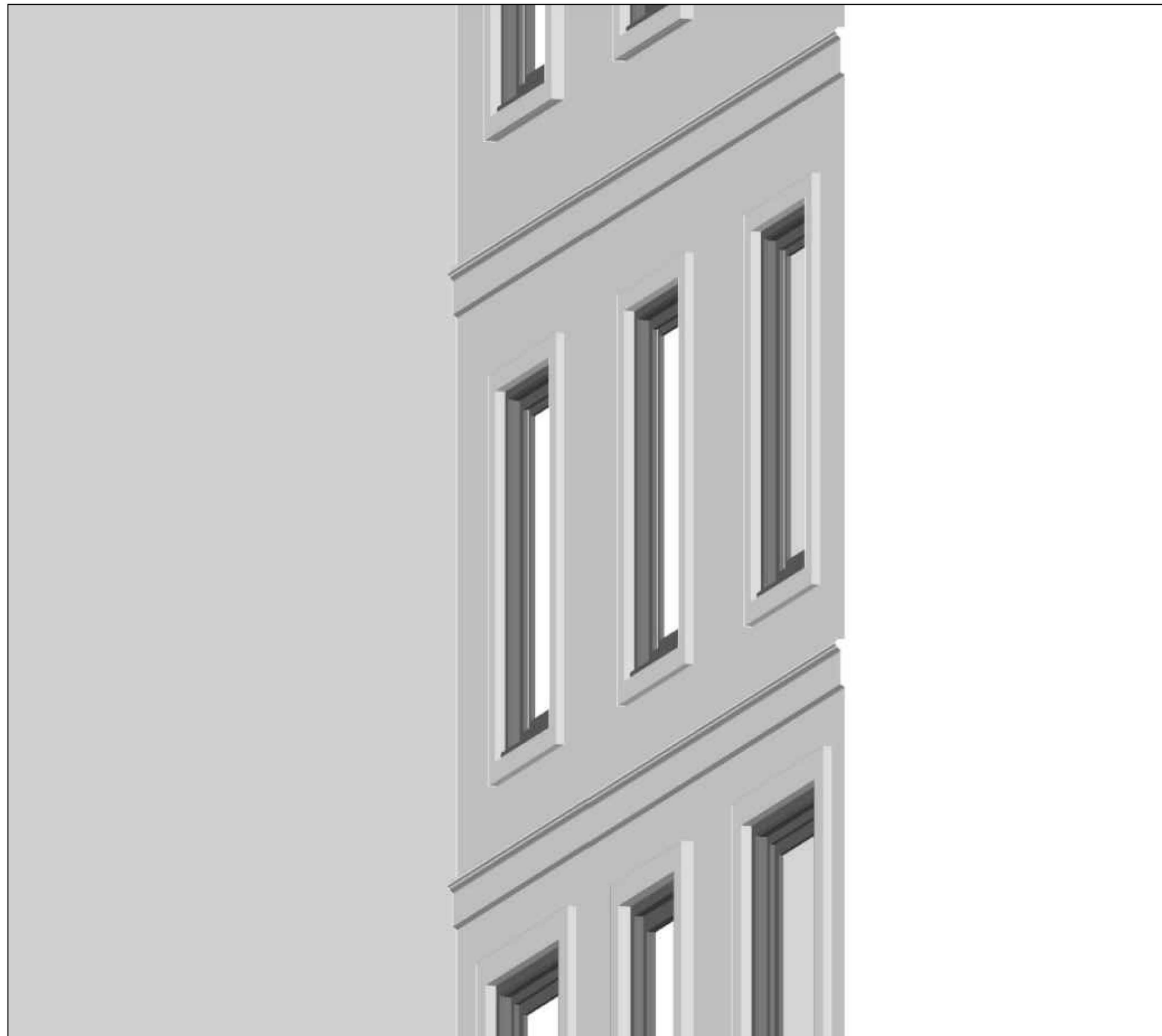
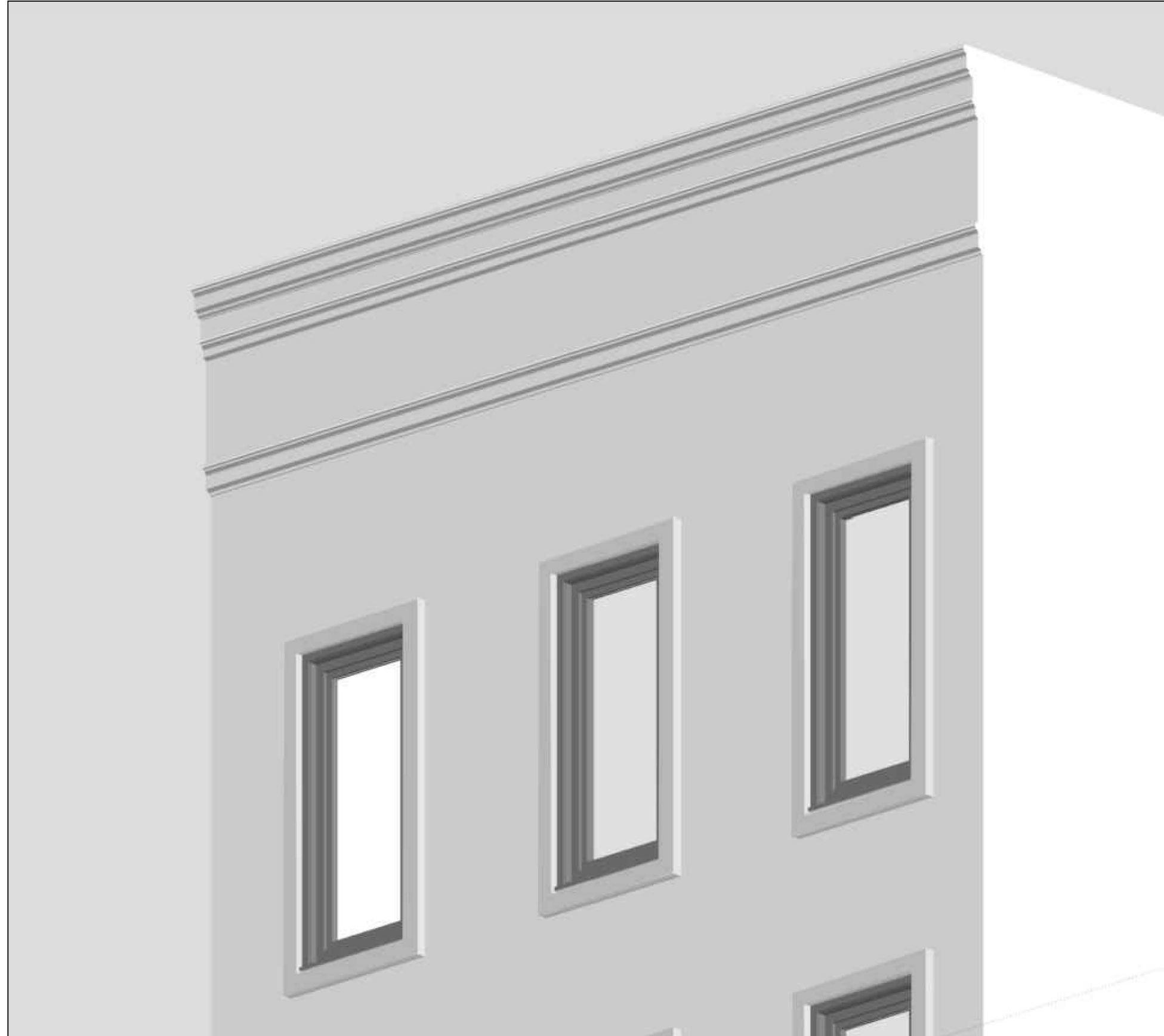
MORE DETAILED WINDOW
SURROUNDS

MORE PROTRUDING AND
DETAILED STRINGCOURSES

TALLER PARLOR WINDOWS
SITTING ON STRINCOURSE

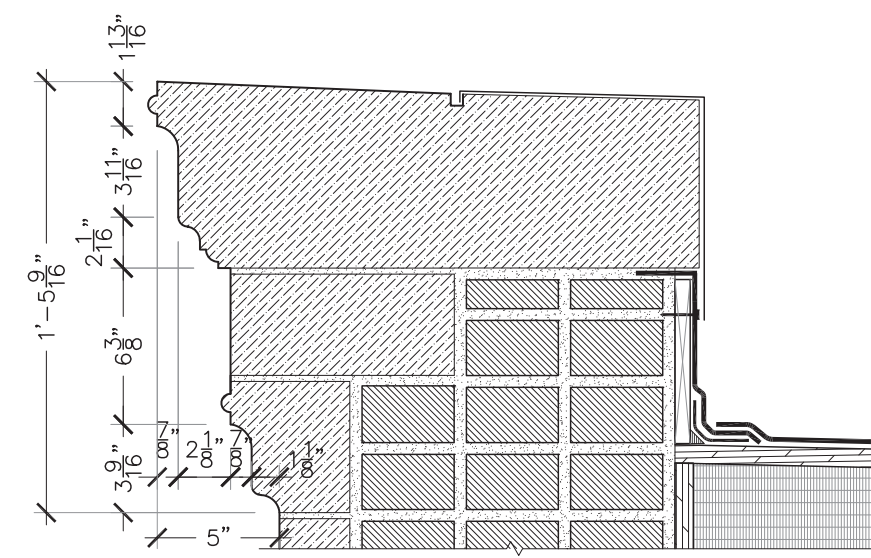
ONE DOOR VISUALLY
MATCHES WINDOW



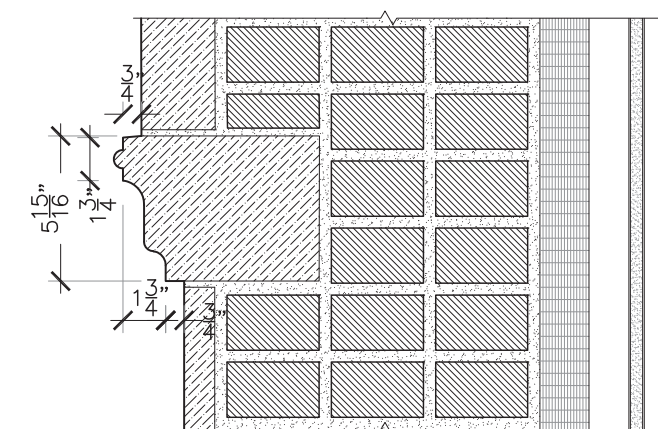




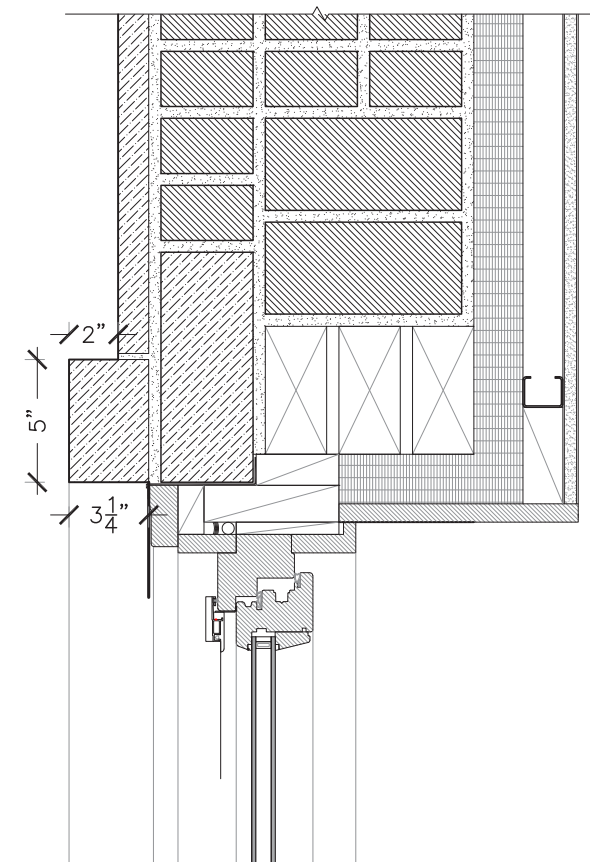




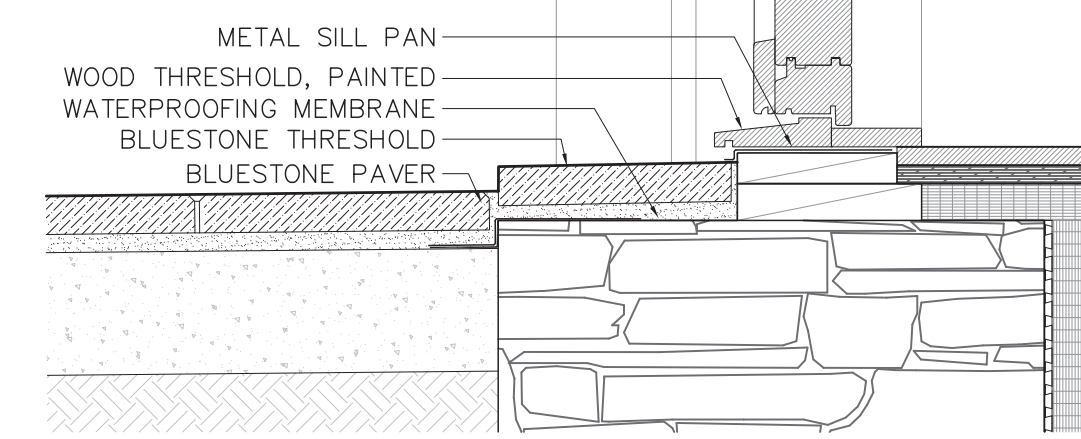
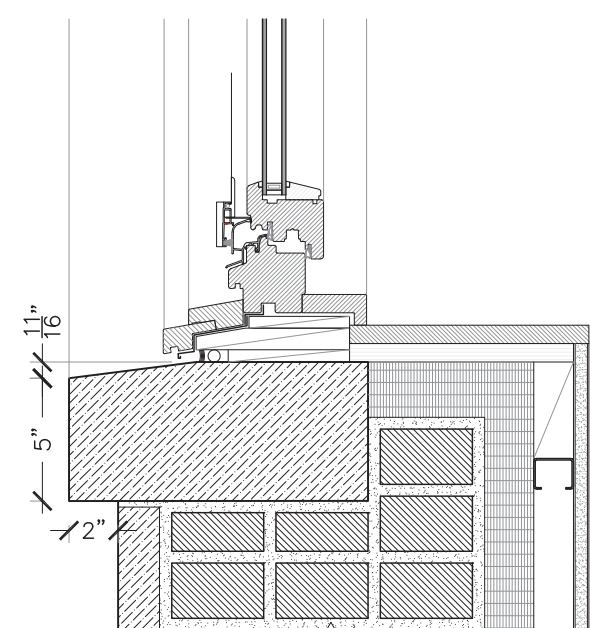
1 CORNICE DETAIL
Scale : 1-1/2"=1'-0"



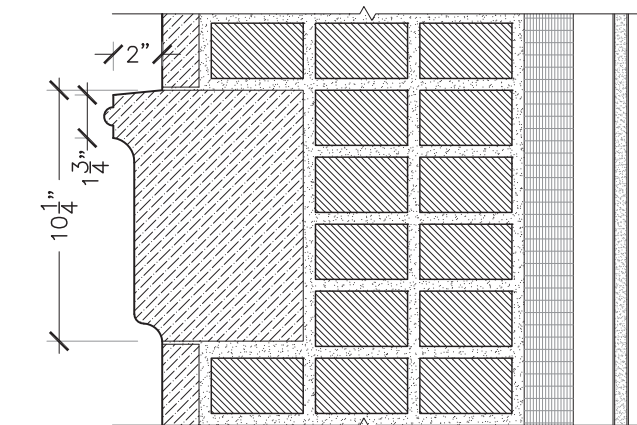
2 STRINGCOURSE DETAIL
Scale : 1-1/2"=1'-0"



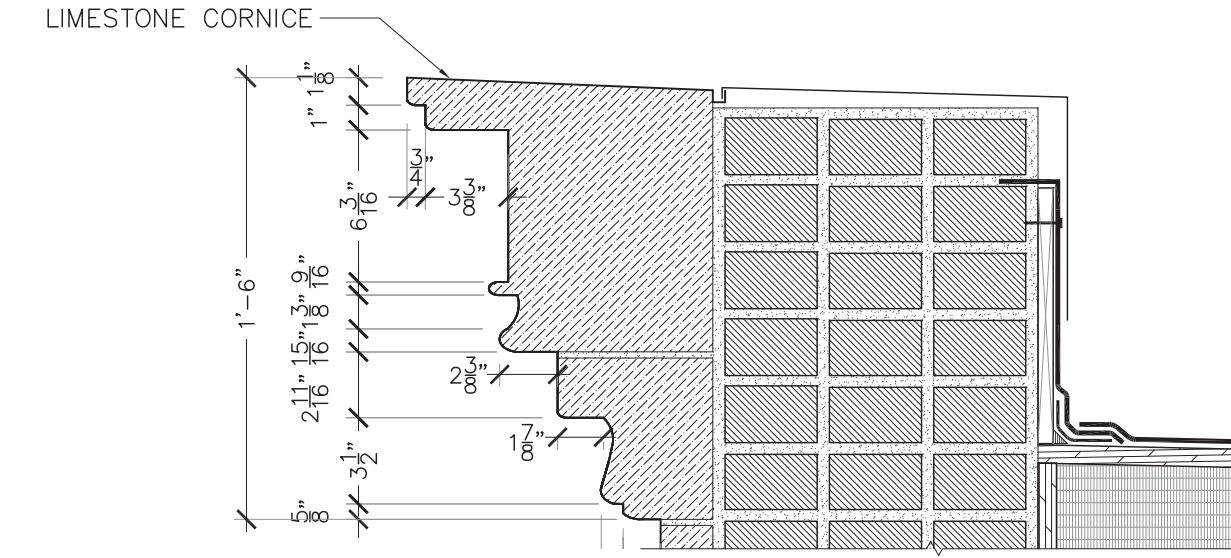
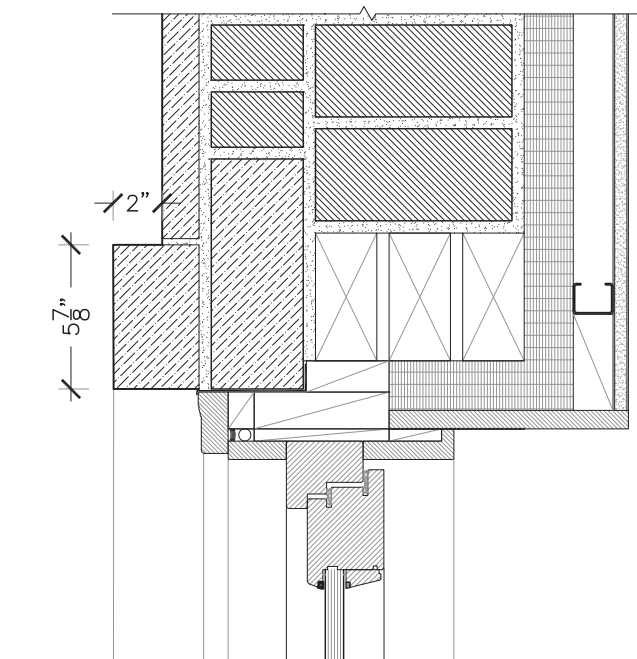
3 WINDOW SURROUND DETAIL
Scale : 1-1/2"=1'-0"



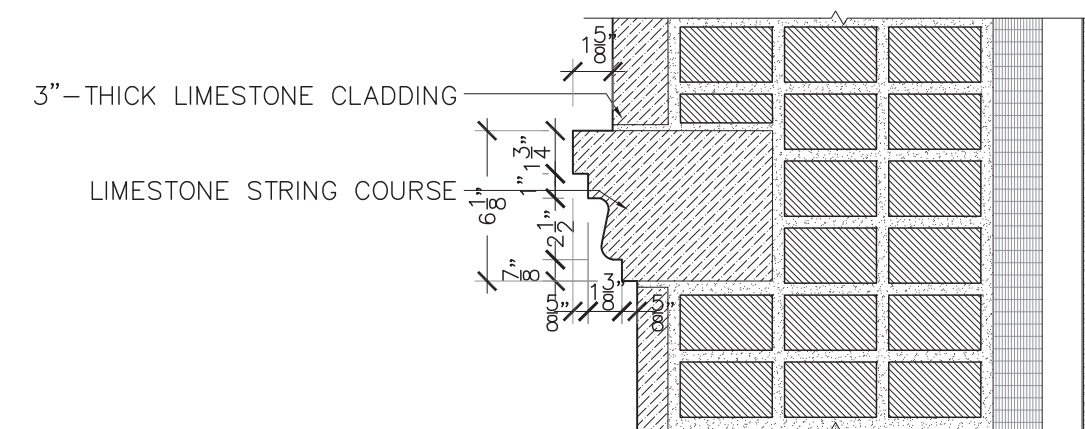
5 DOOR DETAIL
Scale : 1-1/2"=1'-0"



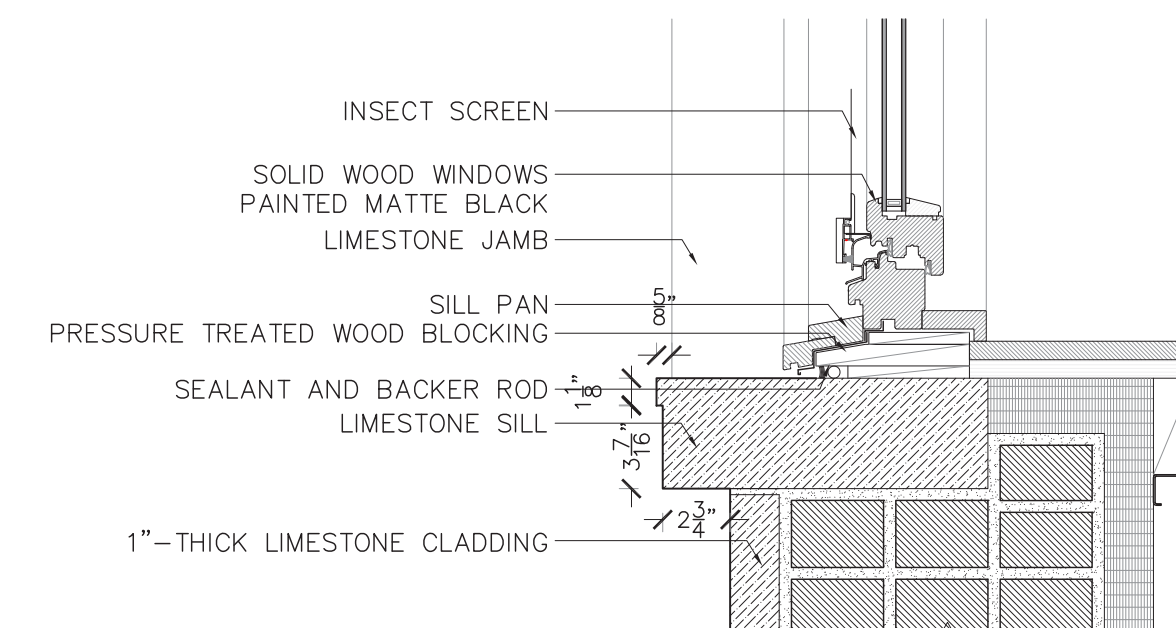
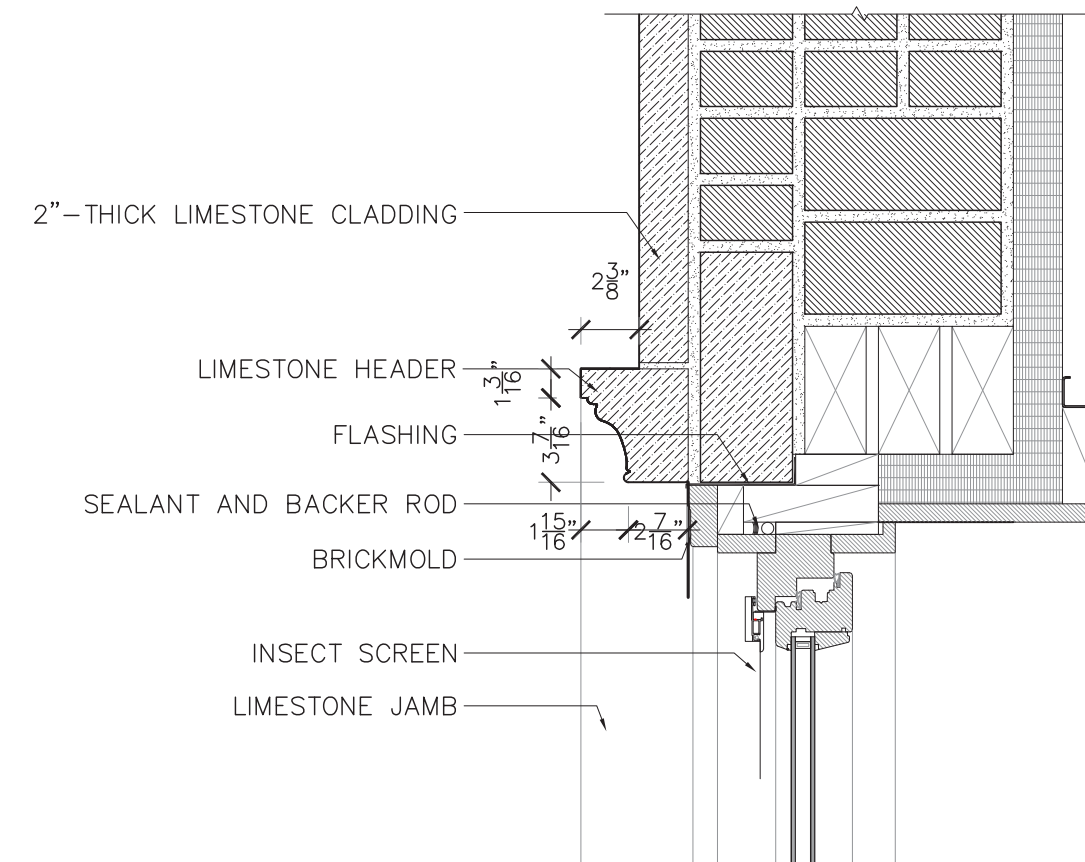
4 STRINGCOURSE DETAIL
Scale : 1-1/2"=1'-0"



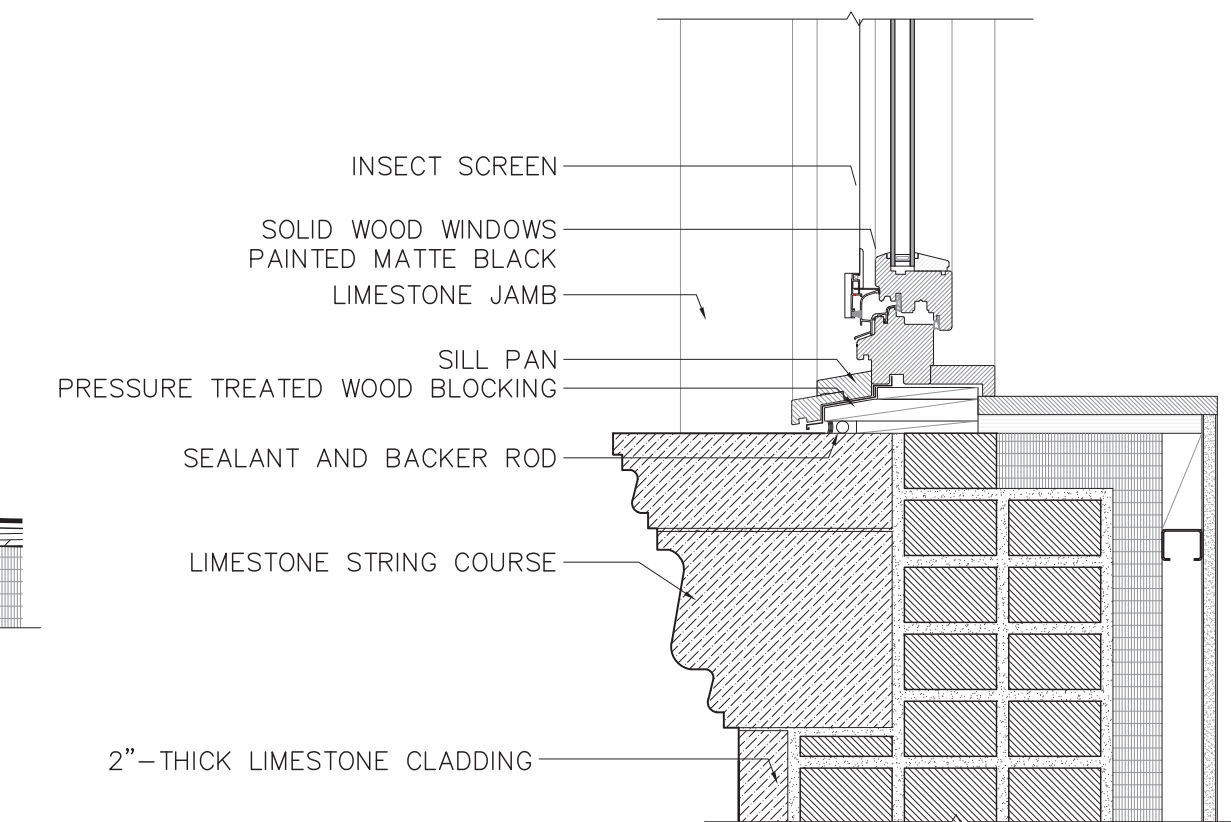
6 CORNICE DETAIL
Scale : 1-1/2"=1'-0"



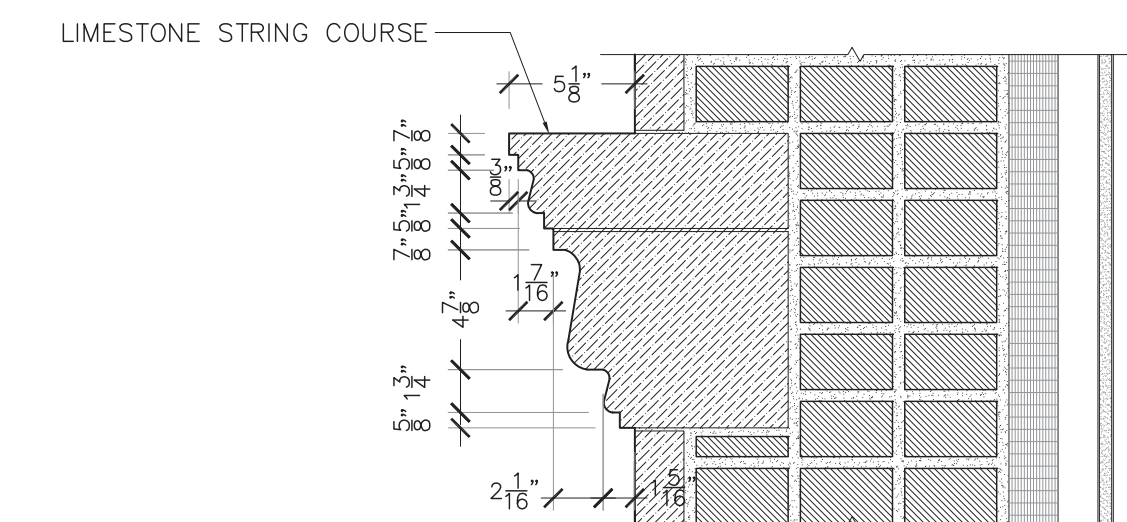
7 STRINGCOURSE DETAIL
Scale : 1-1/2"=1'-0"



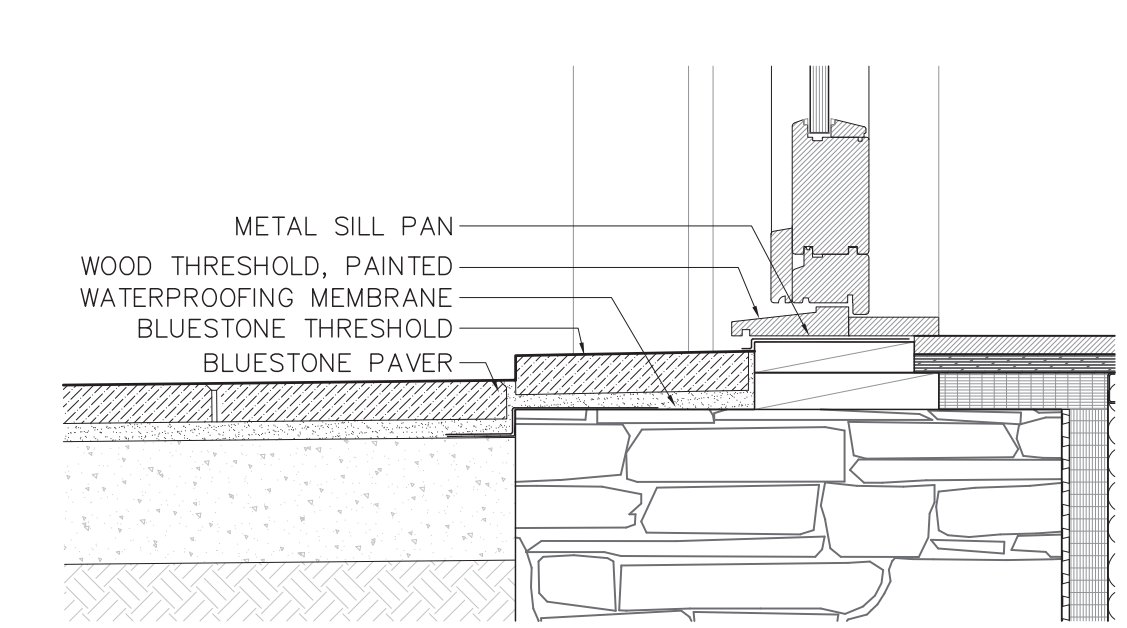
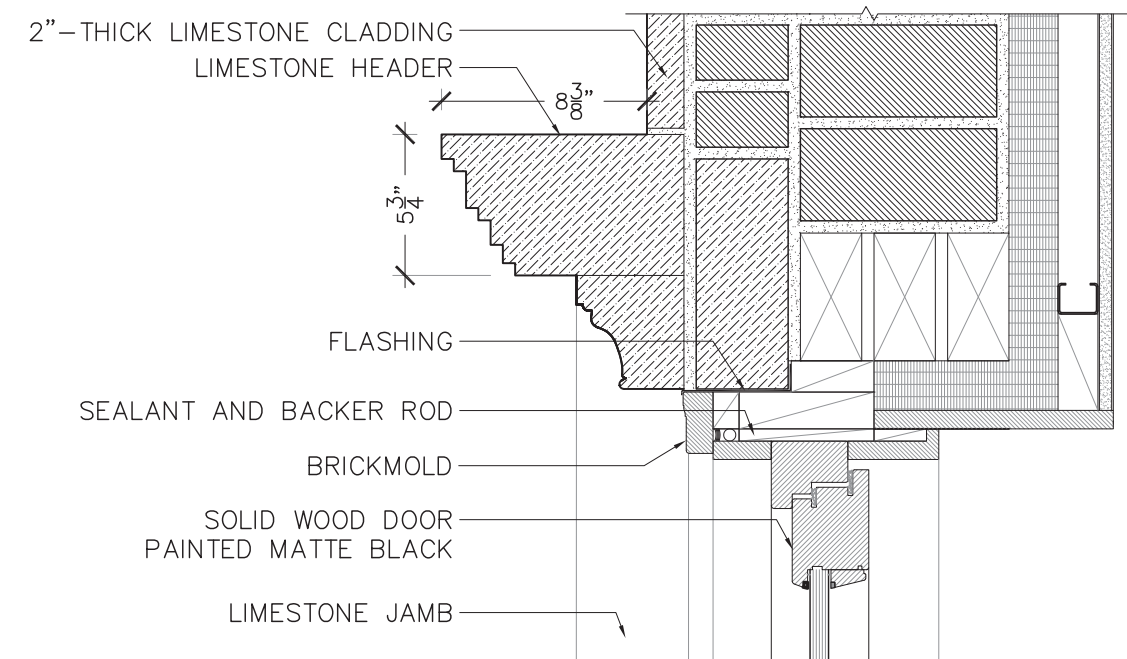
8 TYP WINDOW SURROUND DETAIL
Scale : 1-1/2"=1'-0"



9 PARLOR WINDOW SURROUND AND STRINGCOURSE DETAIL
Scale : 1-1/2"=1'-0"



10 STRINGCOURSE DETAIL
Scale : 1-1/2"=1'-0"



6 DOOR DETAIL
Scale : 1-1/2"=1'-0"



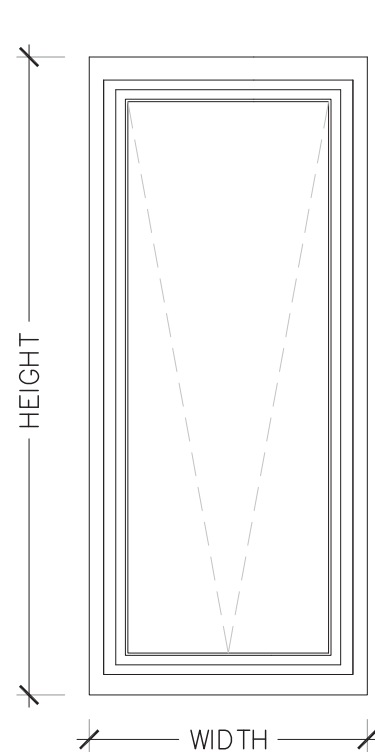


WINDOW SCHEDULE

FLOOR	WINDOW #	LOCATION	TYPE	DESCRIPTION	WINDOW OPENING	GLAZING	FINISH		CASING	SUPPLIER	NOTES
					WIDTH X HEIGHT		EXTERIOR	INTERIOR			
FIRST FLOOR	B01-1	LOBBY	B	FIXED PANEL	2'-10" X 7'-0"	INSULATED DOUBLE GLAZING	SOLID WOOD PAINTED MATTE BLACK RAL 9004 SIGNAL BLACK	SOLID WOOD PAINTED TBD	A	TBD	—
SECOND FLOOR	A01-2	APT	A	TILT-AND-TURN	2'-9" X 6'-6"	INSULATED DOUBLE GLAZING	SOLID WOOD PAINTED MATTE BLACK RAL 9004 SIGNAL BLACK	SOLID WOOD PAINTED TBD	A	TBD	—
	A02-2	APT	A	TILT-AND-TURN	2'-10" X 6'-6"	INSULATED DOUBLE GLAZING	SOLID WOOD PAINTED MATTE BLACK RAL 9004 SIGNAL BLACK	SOLID WOOD PAINTED TBD	A	TBD	—
	A03-2	APT	A	TILT-AND-TURN	2'-9" X 6'-6"	INSULATED DOUBLE GLAZING	SOLID WOOD PAINTED MATTE BLACK RAL 9004 SIGNAL BLACK	SOLID WOOD PAINTED TBD	A	TBD	—
THIRD FLOOR	A01-3	APT	A	TILT-AND-TURN	2'-9" X 6'-10"	INSULATED DOUBLE GLAZING	SOLID WOOD PAINTED MATTE BLACK RAL 9004 SIGNAL BLACK	SOLID WOOD PAINTED TBD	A	TBD	—
	A02-3	APT	A	TILT-AND-TURN	2'-10" X 6'-10"	INSULATED DOUBLE GLAZING	SOLID WOOD PAINTED MATTE BLACK RAL 9004 SIGNAL BLACK	SOLID WOOD PAINTED TBD	A	TBD	—
	A03-3	APT	A	TILT-AND-TURN	2'-9" X 6'-10"	INSULATED DOUBLE GLAZING	SOLID WOOD PAINTED MATTE BLACK RAL 9004 SIGNAL BLACK	SOLID WOOD PAINTED TBD	A	TBD	—
FOURTH FLOOR	A01-3	APT	A	TILT-AND-TURN	2'-9" X 6'-6"	INSULATED DOUBLE GLAZING	SOLID WOOD PAINTED MATTE BLACK RAL 9004 SIGNAL BLACK	SOLID WOOD PAINTED TBD	A	TBD	—
	A02-3	APT	A	TILT-AND-TURN	2'-10" X 6'-6"	INSULATED DOUBLE GLAZING	SOLID WOOD PAINTED MATTE BLACK RAL 9004 SIGNAL BLACK	SOLID WOOD PAINTED TBD	A	TBD	—
	A03-3	APT	A	TILT-AND-TURN	2'-9" X 6'-6"	INSULATED DOUBLE GLAZING	SOLID WOOD PAINTED MATTE BLACK RAL 9004 SIGNAL BLACK	SOLID WOOD PAINTED TBD	A	TBD	—
FIFTH FLOOR	A01-3	APT	A	TILT-AND-TURN	2'-9" X 6'-6"	INSULATED DOUBLE GLAZING	SOLID WOOD PAINTED MATTE BLACK RAL 9004 SIGNAL BLACK	SOLID WOOD PAINTED TBD	A	TBD	—
	A02-3	APT	A	TILT-AND-TURN	2'-10" X 6'-6"	INSULATED DOUBLE GLAZING	SOLID WOOD PAINTED MATTE BLACK RAL 9004 SIGNAL BLACK	SOLID WOOD PAINTED TBD	A	TBD	—
	A03-3	APT	A	TILT-AND-TURN	2'-9" X 6'-6"	INSULATED DOUBLE GLAZING	SOLID WOOD PAINTED MATTE BLACK RAL 9004 SIGNAL BLACK	SOLID WOOD PAINTED TBD	A	TBD	—
NOTES: 1. VERIFY ALL DIMENSIONS IN FIELD PRIOR TO FABRICATION. 2. SHOP DRAWINGS TO BE SUBMITTED FOR WINDOW TYPES. 3. HEIGHT OF ALL KNOBS, LEVERS AND PULLS TO MATCH UNLESS OTHERWISE NOTED. 4. WINDOWS TO BE PROVIDED WITH ALL THE PARTS REQUIRED TO FUNCTION, INCLUDING HARDWARE. 5. WINDOW HARDWARE PARTS NOT SPECIFIED IN THIS SET TO BE PROVIDED BY GC AFTER APPROVAL BY ARCHITECT. 6. GLASS SPECIFICATIONS TO BE CONFIRMED BY MANUFACTURER/VENDOR.											

DOOR SCHEDULE

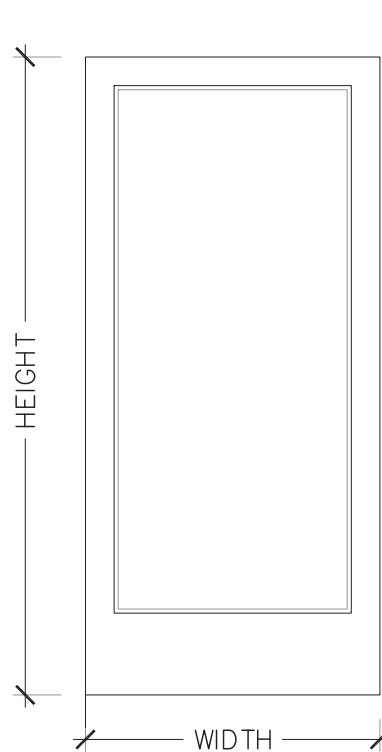
FLOOR	DOOR#	LOCATION	TYPE	FIRE RATING	MATERIAL	FINISH	THICKNESS	TYPE	DOOR OPENING	JAMB THICKNESS	HARWARE TYPE	DOOR CASING		DOOR STOP	NOTES
									WIDTH X HEIGHT			ROOM SIDE	TYPE		
FIRST FLOOR	01-1	LOBBY	A	—	SOLID WOOD WITH GLASS PANEL	EXTERIOR PAINTED BLACK MATTE	3 1⁄8"	SWING	3'-0"X 7'-0"	3"	AA	ONE	A	YES	—
	02-2	LOBBY	A	—	SOLID WOOD WITH GLASS PANEL	EXTERIOR PAINTED BLACK MATTE	3 1⁄8"	SWING	3'-1"X 7'-0"	3"	AA	ONE	A	YES	—
NOTES: 1. VERIFY ALL DIMENSIONS IN FIELD PRIOR TO FABRICATION. 2. SHOP DRAWINGS TO BE SUBMITTED FOR DOOR TYPES 3. HEIGHT OF ALL KNOBS, LEVERS AND PULLS TO MATCH UNLESS OTHERWISE NOTED. 4. DOORS TO BE PROVIDED WITH ALL THE PARTS REQUIRED TO FUNCTION, INCLUDING HARDWARE. 5. DOOR HARDWARE PARTS REQUIRED TO FUNCTION NOT SPECIFIED IN THIS SET TO BE PROVIDED BY GC AFTER APPROVAL BY ARCHITECT.															



WINDOW TYPE A

TYPE: TILT
MATERIAL: SOLID WOOD
EXTERIOR TRIM: WOOD
EXTERIOR FINISH: BLACK MATTE PAINT
GLASS: INSULATED DOUBLE GLASS
QUANTITY: 12

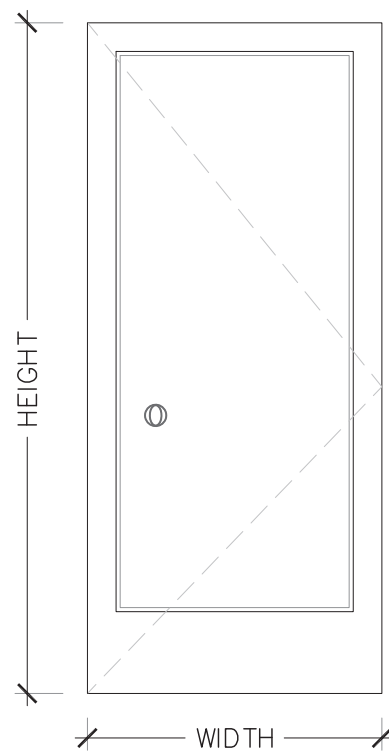
Ⓐ012 Ⓐ022 Ⓐ032 Ⓐ013 Ⓐ033
Ⓐ023 Ⓐ033 Ⓐ014 Ⓐ024 Ⓐ034
Ⓐ013 Ⓐ023



WINDOW TYPE B

TYPE: FIXED PANEL
MATERIAL: SOLID WOOD
EXTERIOR TRIM: WOOD
EXTERIOR FINISH: BLACK MATTE PAINT
GLASS: INSULATED DOUBLE GLASS
QUANTITY: 1

Ⓑ01

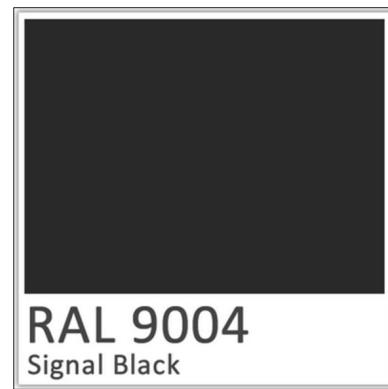


DOOR TYPE A

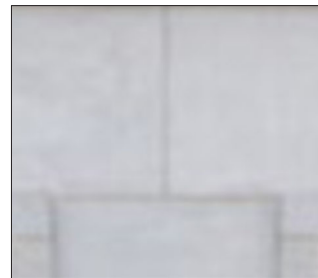
THICKNESS: 3-1/8"
MATERIAL: SOLID WOOD WITH GLASS
EXTERIOR TRIM: WOOD
TYPE: SWINGING
FINISH: EXTERIOR PAINTED BLACK MATTE
QUANTITY: 2

Ⓓ01 Ⓓ02 1

WINDOWS EXTERIOR COLOR:



LIMESTONE FACADE:



The current proposal is:

Preservation Department – Item 10, LPC-22-11297

**22 East 81st Street – Metropolitan Museum Historic District
Borough of Manhattan**

Note: this is a Public Meeting item. No public testimony will be received today as the hearing on this item is closed