

The current proposal is:

Preservation Department – Item 2, LPC-23-02794

**150-05 Jamaica Avenue – Rufus King House District –
Individual Landmark
Borough of Queens**

To Testify Please Join Zoom

Webinar ID: 860 5066 6497

Passcode: 669738

By Phone: 1 646-558-8656 US (New York)

877-853-5257 (Toll free) US

888 475 4499 (Toll free)

Note: If you want to testify on an item, join the Zoom webinar at the agenda’s “Be Here by” time (about an hour in advance). When the Chair indicates it’s time to testify, “raise your hand” via the Zoom app if you want to speak (*9 on the phone). Those who signed up in advance will be called first.



Parks

Rufus King Park Playground

Located near 153rd St at the intersection of 90th Ave,
in the Borough of Queens.

Landmarks Preservation Commission Review
Jacqui Harris, NYC Parks

Total Budget: \$4.625m
City Council District 24, James Gennaro - \$3.8m FY22
Mayor, Eric Adams - \$.8 m FY22

Project Size: 1.30 ac

Goals

- Upgrade active play capacity for the park and neighborhood
- Increase potential for basketball play.
- Improve spray shower
- Enhance and add to the environmental amenities of the site





City .5 MI



Neighborhood 2000 FT

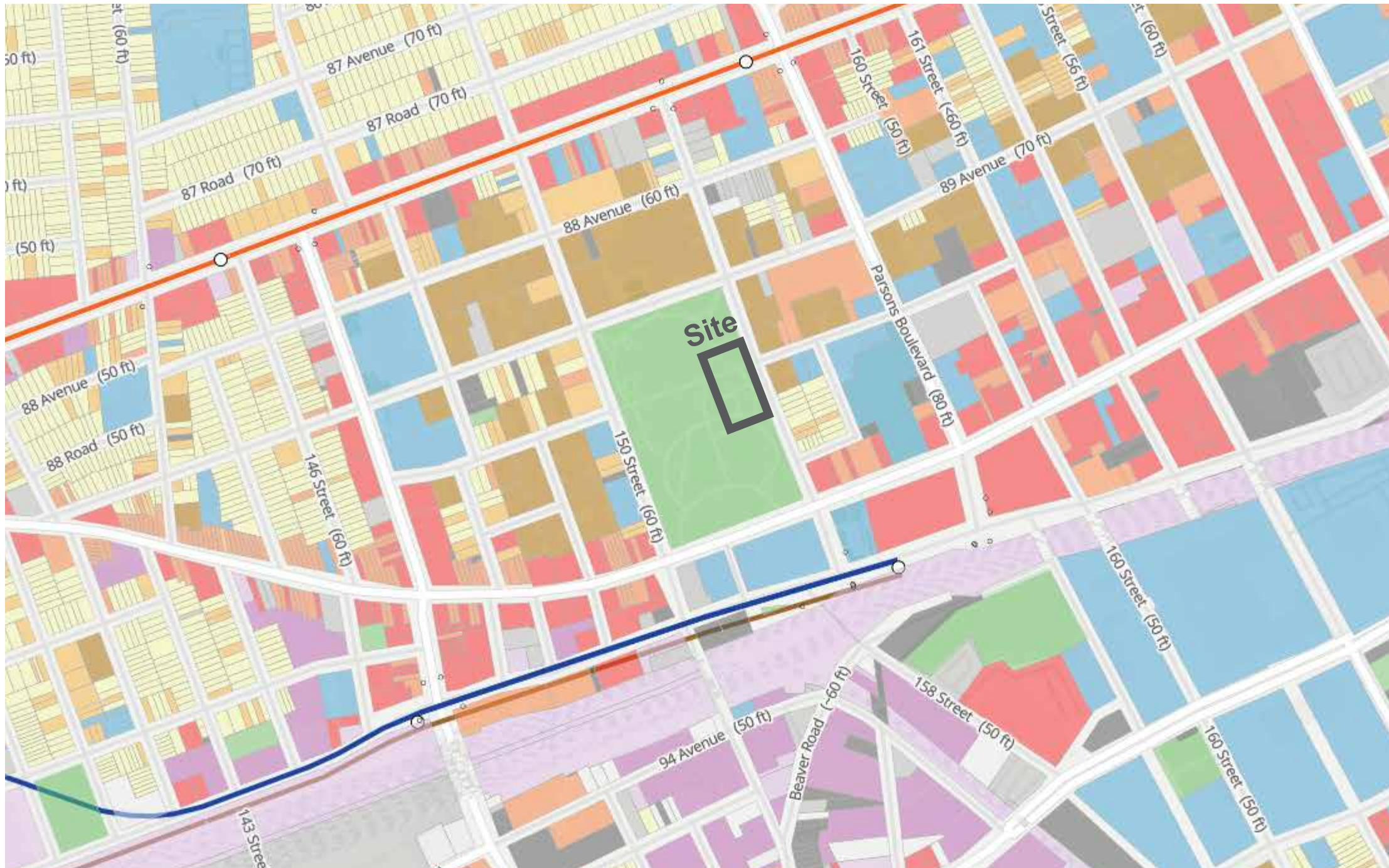


Site 200 FT



NYC Parks

Rufus King Park Playground | Project Location



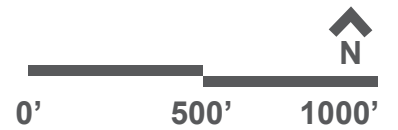
Land Use Categories

- 1 And 2 Family Residential
- Multi-Family Residential (Walkup)
- Multi-Family Residential (Elevator)
- Mixed Use
- Commercial & Office
- Industrial & Manufacturing
- Transportation / Utilities
- Public Facilities & Institutional
- Open Space And Outdoor Recreation
- Parking
- Vacant Land
- Other



NYC Parks

Rufus King Park Playground | Surrounding Land Use



Briarwood Playground

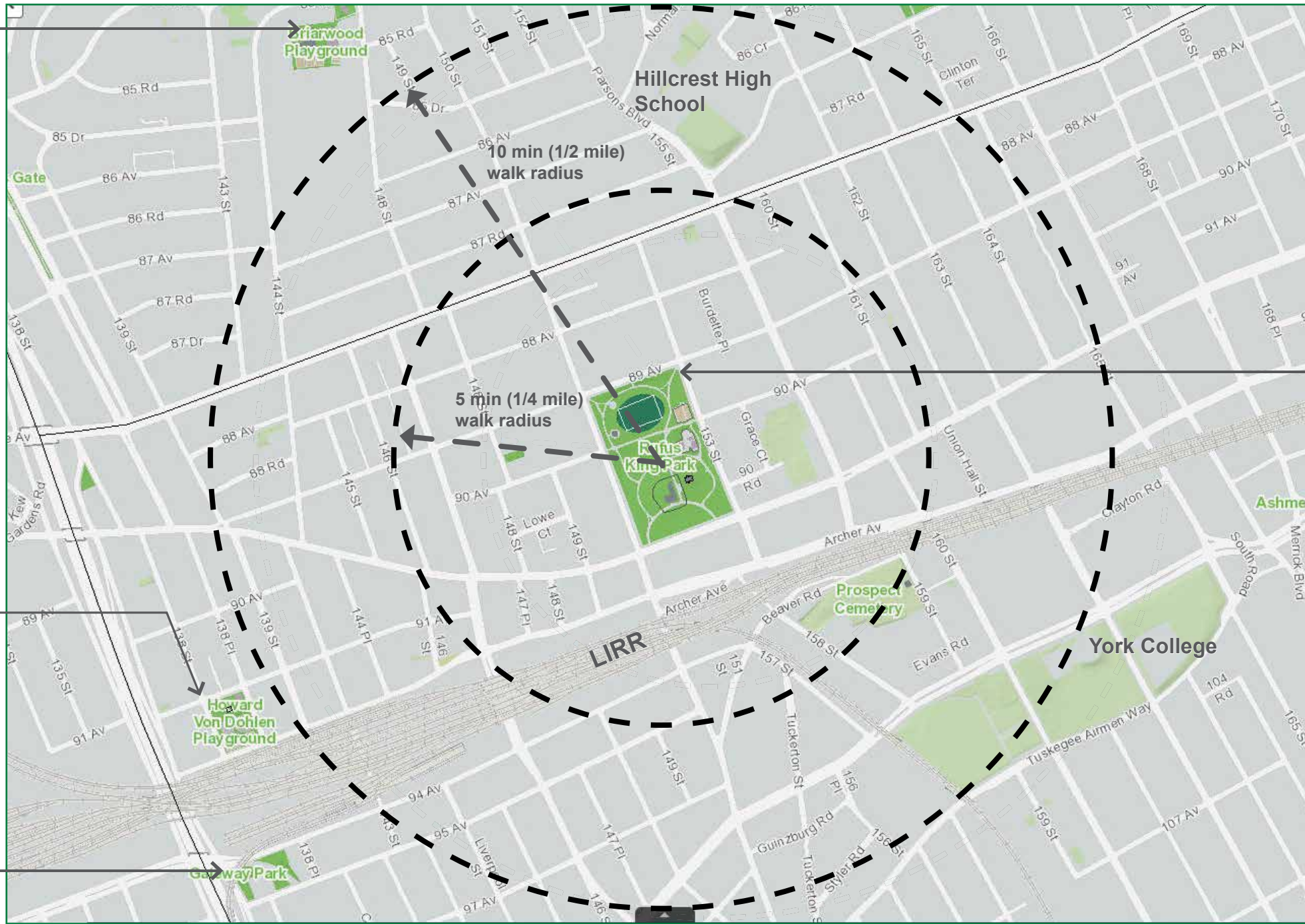
- Basketball (3)
- Handball (3)
- Play equipment

Howard Von Dohline Playground

- Basketball (1)
- Handball (3)
- Play equipment
- Comfort station
- Spray shower
- Skate Park

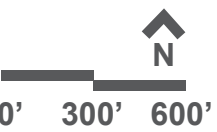
Gateway Park

- Play Equipment

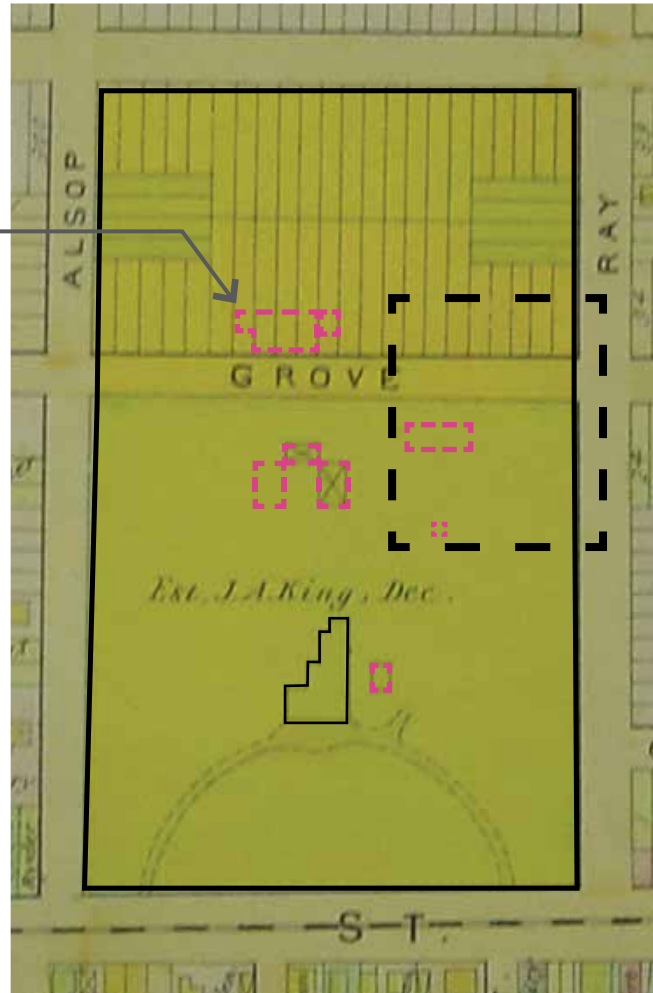


Rufus King Park

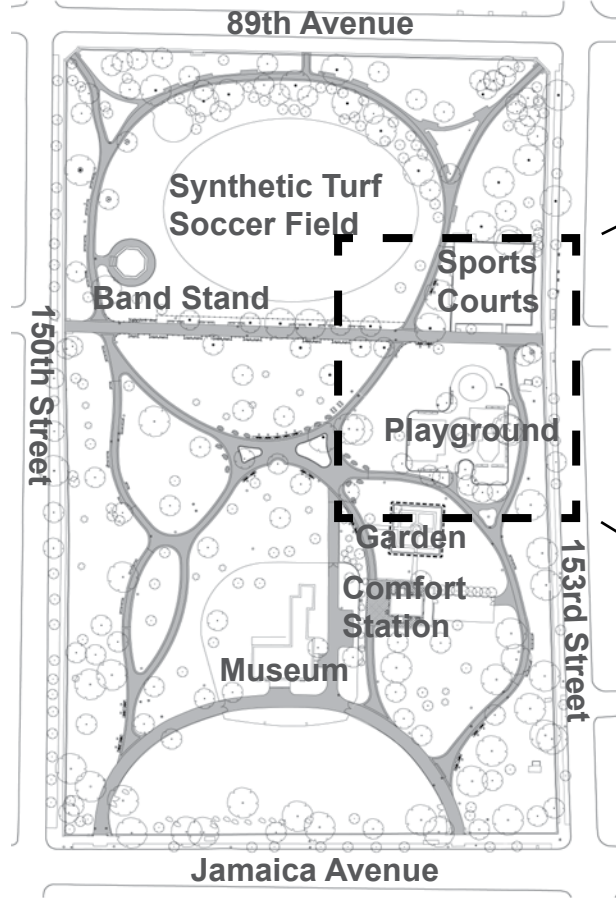
- Basketball (1)
- Handball (1)
- Playground
- Spray shower
- Comfort Station
- Eatery
- Historic House



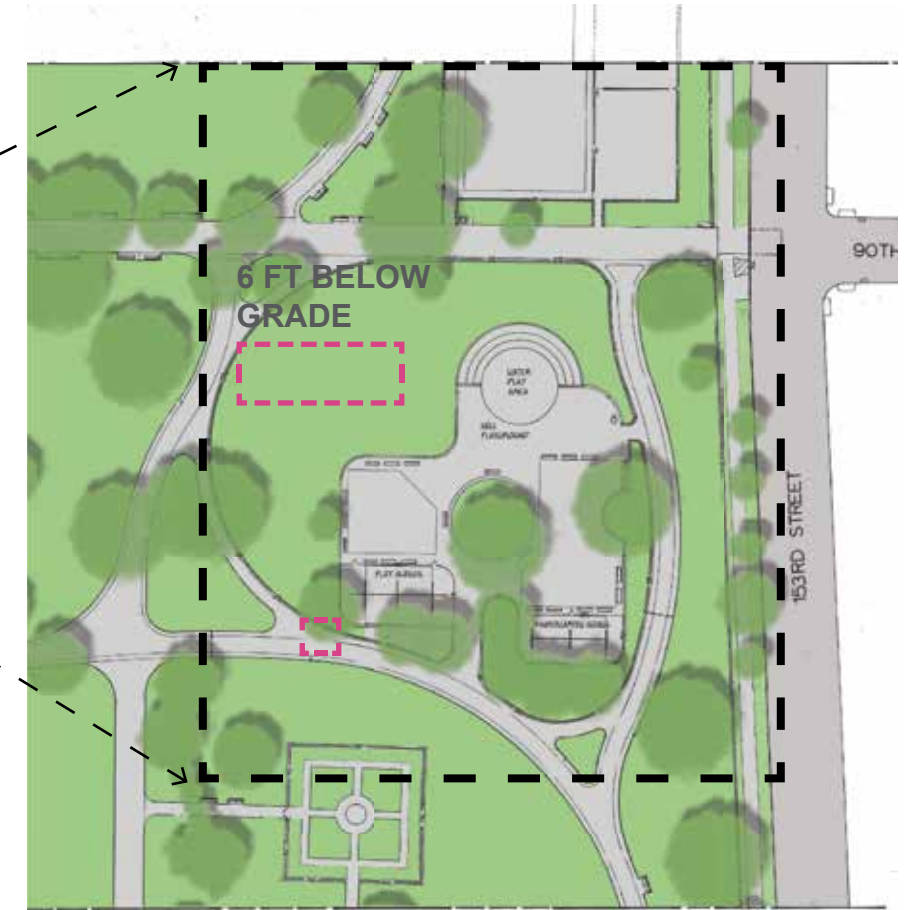
Approximate locations of historic outbuilding



1891

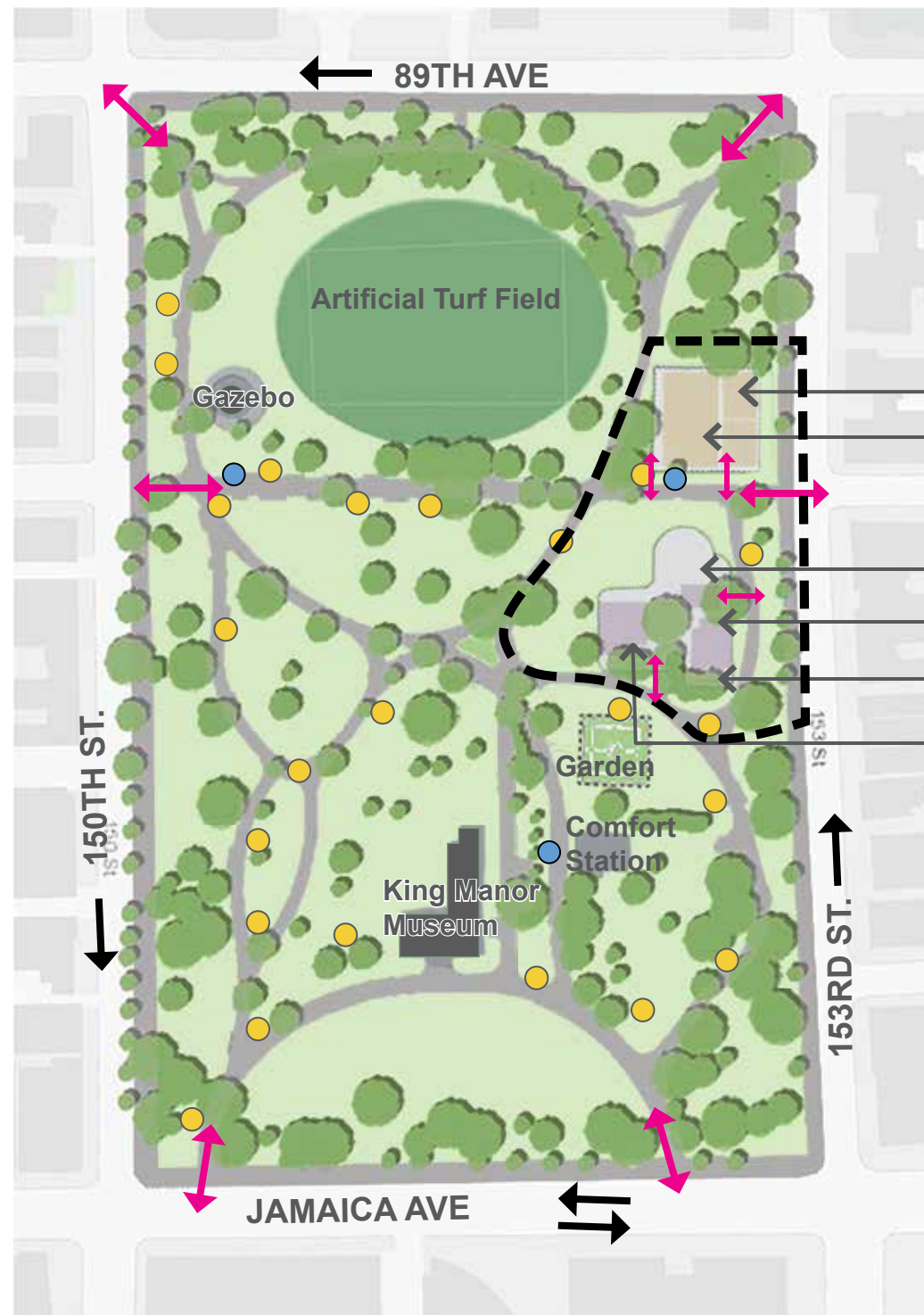


2022



1984- playground and sports courts moved to current location





Legend

- Project Limit
- Park Entrance
- Play Equipment
- Building or Structure
- Asphalt Pavement
- Sport Courts
- Tree
- Parks Lightpole
- Drinking Fountain
- Traffic

Park Tree Canopy Information

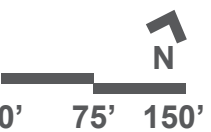
44.9% Parkland Canopy Cover
2% Canopy Change 2010-2017

Heat Vulnerability Index

Site is not in high HVI area.



Rufus King Park Playground | Existing Conditions

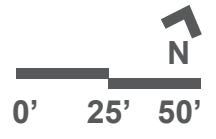


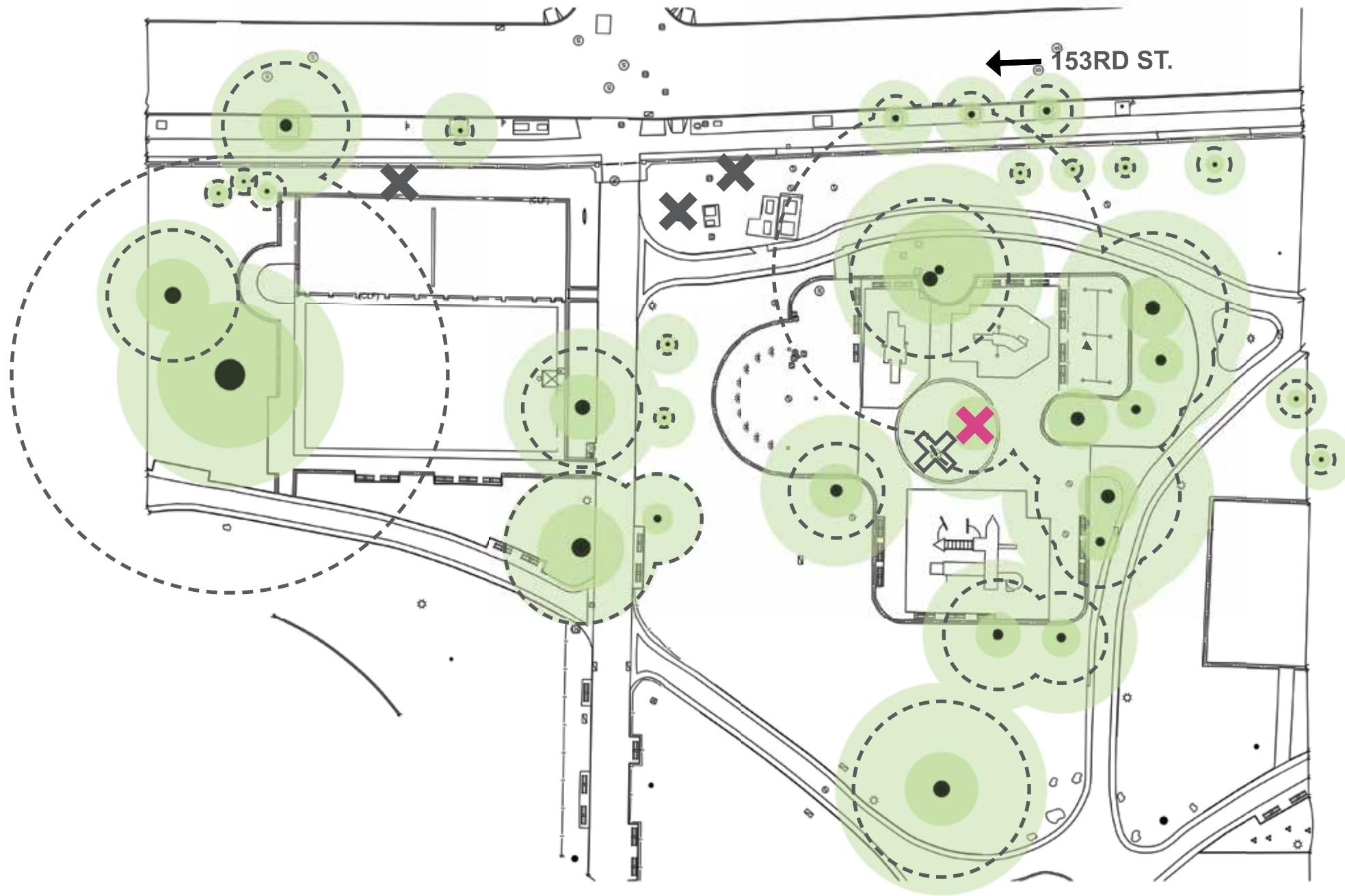


- ### Legend
- Project Limit
 - Park Entrance
 - Pedestrian Traffic
 - Heavy Vehicle Traffic
 - Outdated play equipment & safety surface
 - Damaged asphalt
 - Open sunny play area
 - Drainage Problem
 - Tree Canopy/Shade









Rufus King Park Playground | Site Analysis





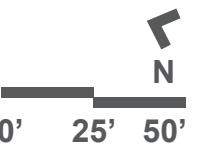
Legend

-  Canopy
-  Structural Root Zone
-  Critical Root Zone
-  Stump Removal
-  Tree Removal due to poor condition
-  Tree Removal due to design considerations



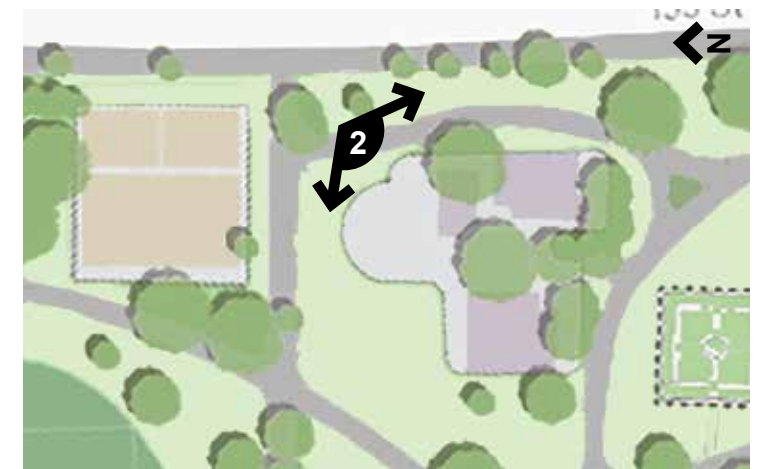
NYC Parks

Rufus King Park Playground | Tree Inventory





1 - Playground and Spray Shower

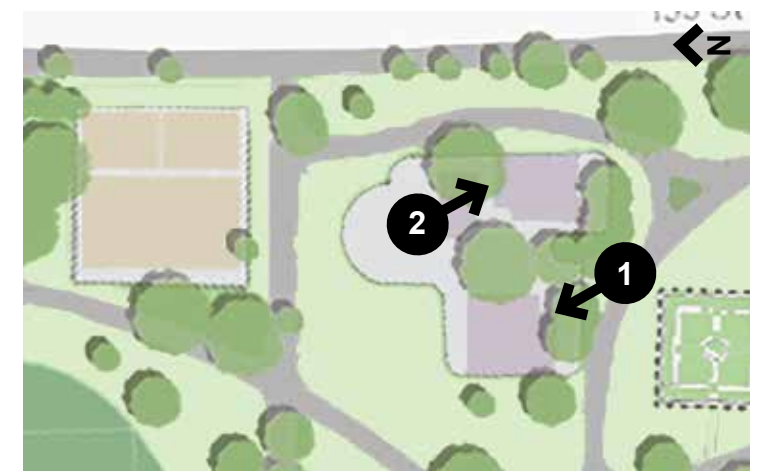




1 - 5-12 Play Equipment



2 - 2-5 Play Equipment

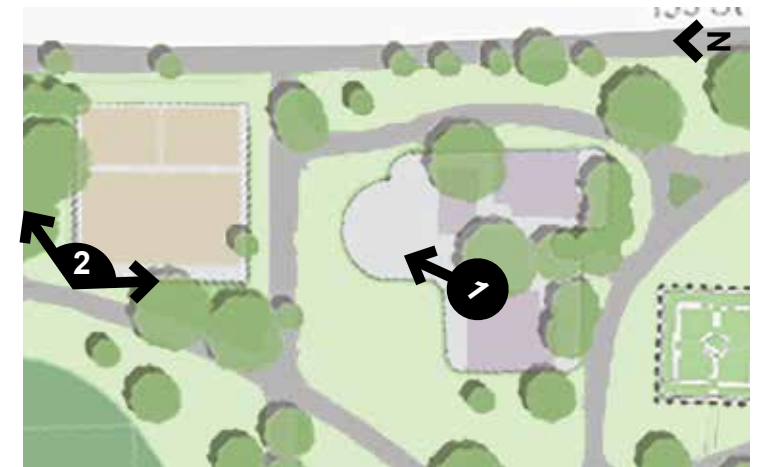




1 - Spray Shower



2 - Basketball and Handball Courts





1 - Typical Path Detail



Community Priorities

Play

bright colorful play equipment, accessible, ground play, swings for variety of age groups

Water

water play very important

Green

shade in play areas

Seating

important in play areas

Sports

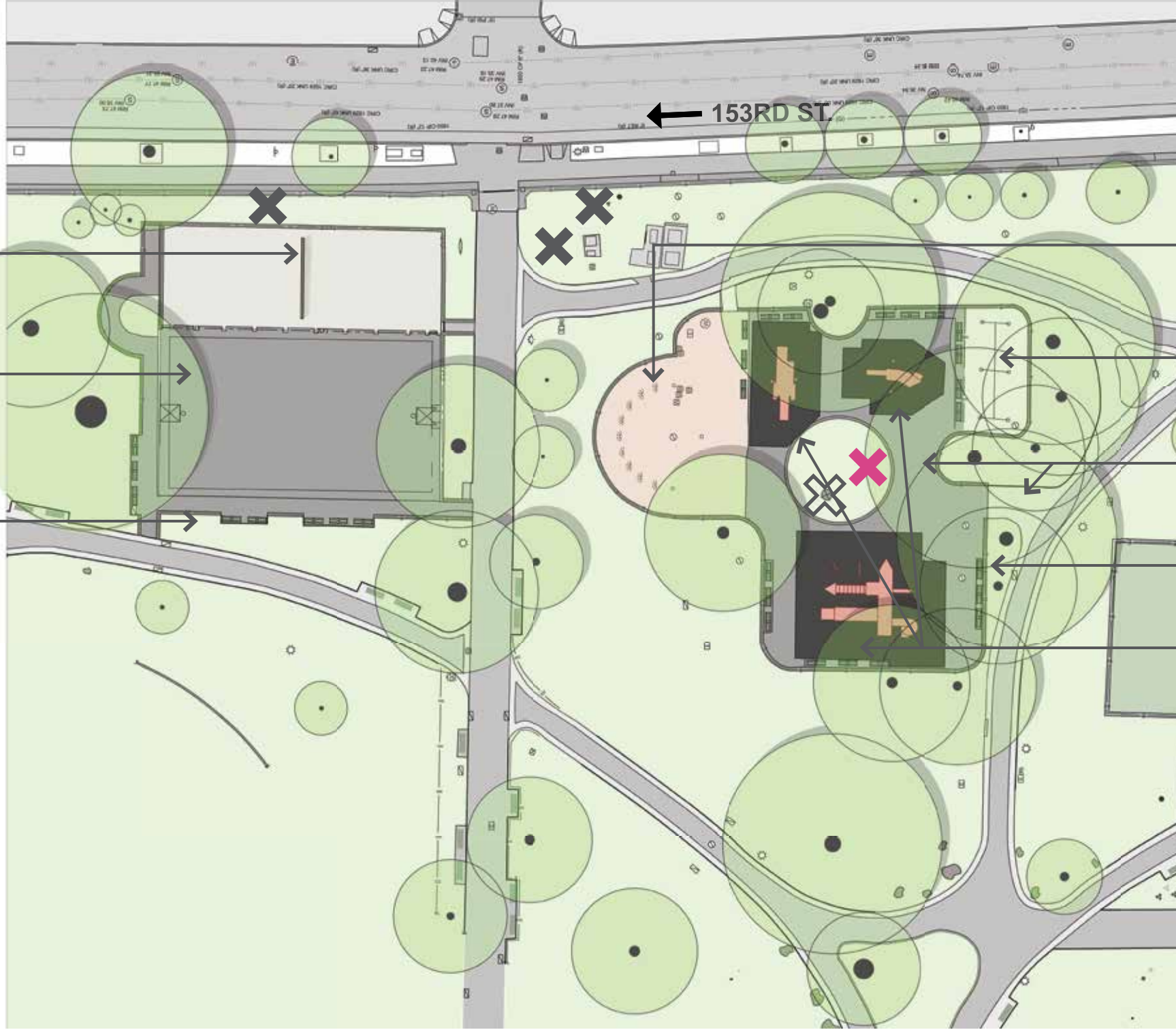
increase basketball play value

Art

local artists, temporary installations, murals

ground play
colorful play
swings
spray shower
accessible
interactive
basketball
adult fitness + stretch area
climbable
inclusive
local art, temporary installations





Existing Handball Wall and Pavement to remain

Asphalt pavement to be replaced in kind

Benches and asphalt pavers to be removed

Spray shower colored concrete fixtures to be removed

Play equipment and swings on safety surface to be removed

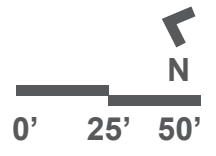
Asphalt pavement to be removed

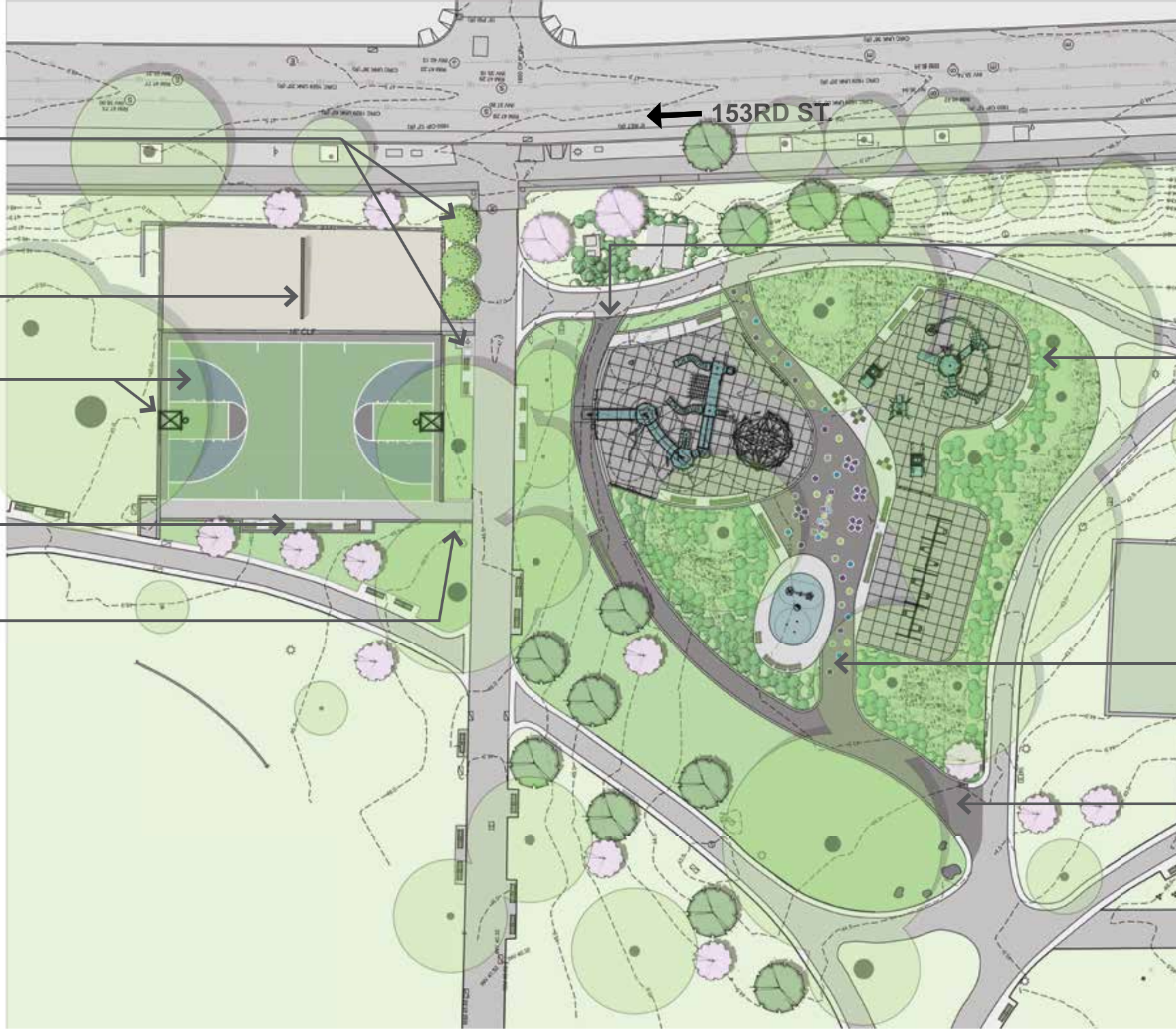
Benches on concrete pads to be removed

Safety surface on asphalt to be removed



Rufus King Park Playground | Existing Site Plan





Introduction of trees, benches, and bike repair station at entrance

Reconstruct Handball Wall and Pavement

New Asphalt and Color Seal Coat
New Backboards

New Benches and Misting Station on Concrete Bench Pad

Improved Ramp

153RD ST

New Accessible Play Route for New 5-12 Play Unit

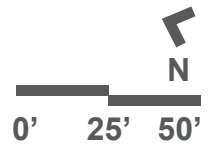
New Playground for 2-5, 5-12, and Spray Shower

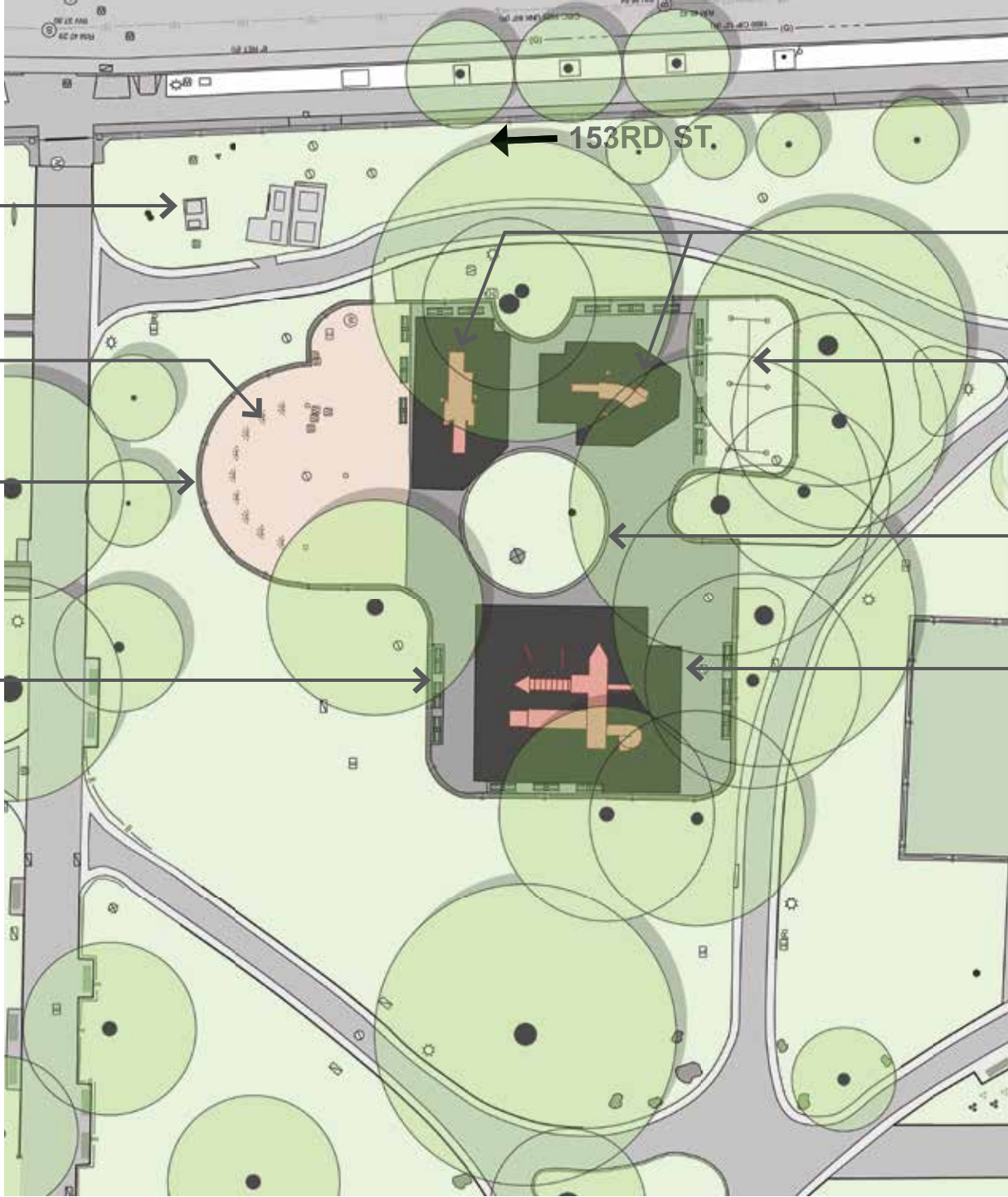
New Asphalt Entrance Path

New Asphalt Path and Maintenance Access



Rufus King Park Playground | Proposed Schematic





RPZ and Drainage
Booster Pump to
Remain

Remove Spray heads
and concrete pavement

Remove Concrete
Curb

Remove Benches
and Concrete Bench
Pads

Remove 2-5 Play Unit
and Safety Surface
on Asphalt Pavement

Remove Swings and
Safety Surface on
Asphalt Pavement

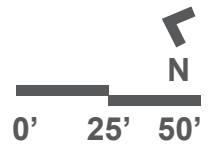
Remove Concrete Curb

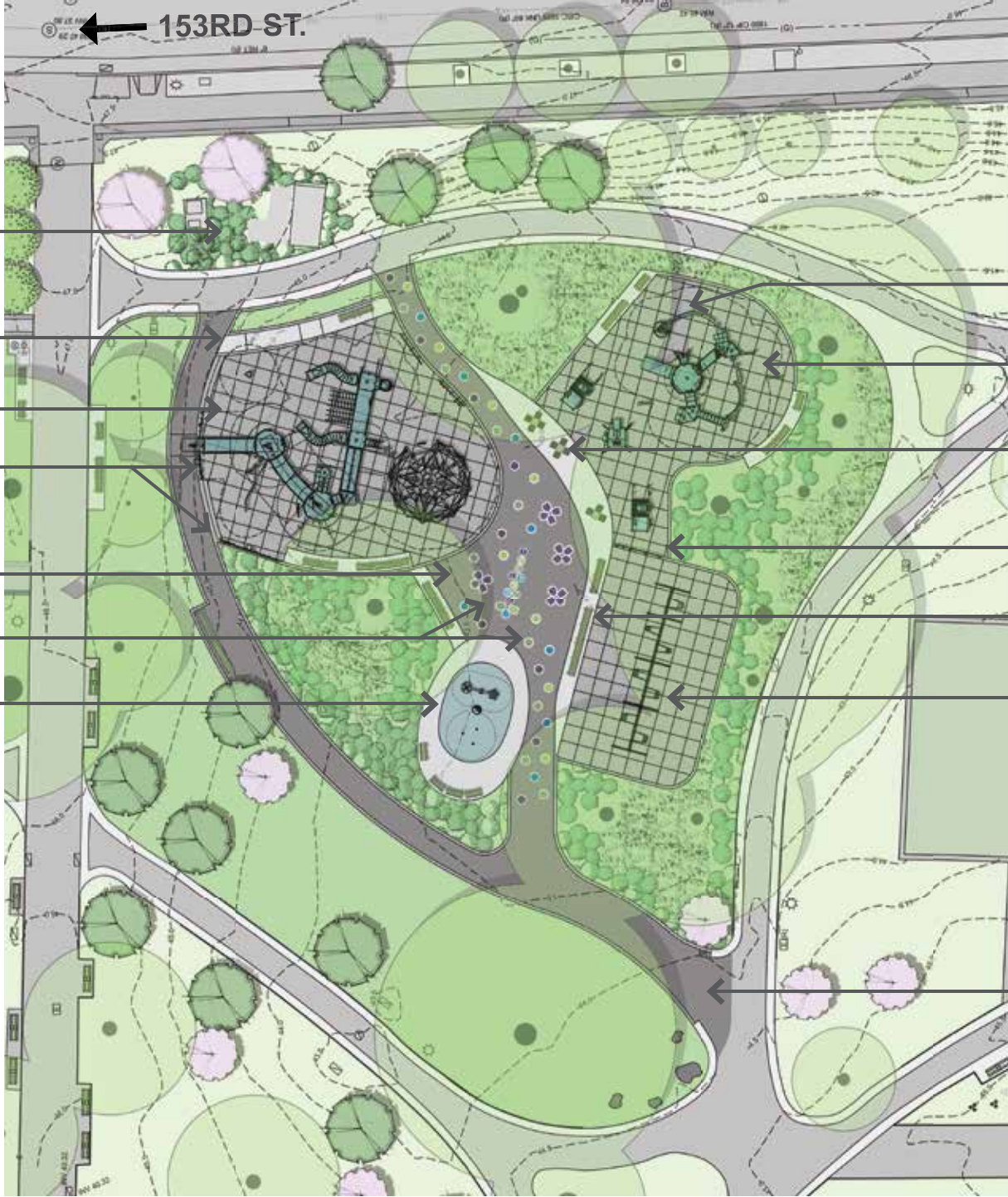
Remove 5-12 Play Unit
and Safety Surface on
Asphalt Pavement

153RD ST.



Rufus King Park Playground | Existing Playground Plan





Screening at RPZ

New Concrete Ramp

New 5-12 Play Unit

New One sided play panels

New Asphalt

New Painted Games

New Spray Shower on Concrete Pavement

New Safety Surface

New 2-5 Play Unit and Ground Play Houses

New Tot Tables on Concrete Pads

New One Sided Play Panels

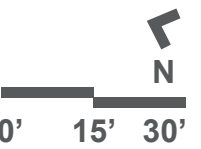
New Central Park Settee Benches on Concrete Pavement

New Swings- 4 Strap, 2 Bucket, 1 ADA

New Asphalt Path and Maintenance Access

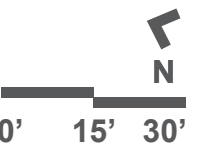


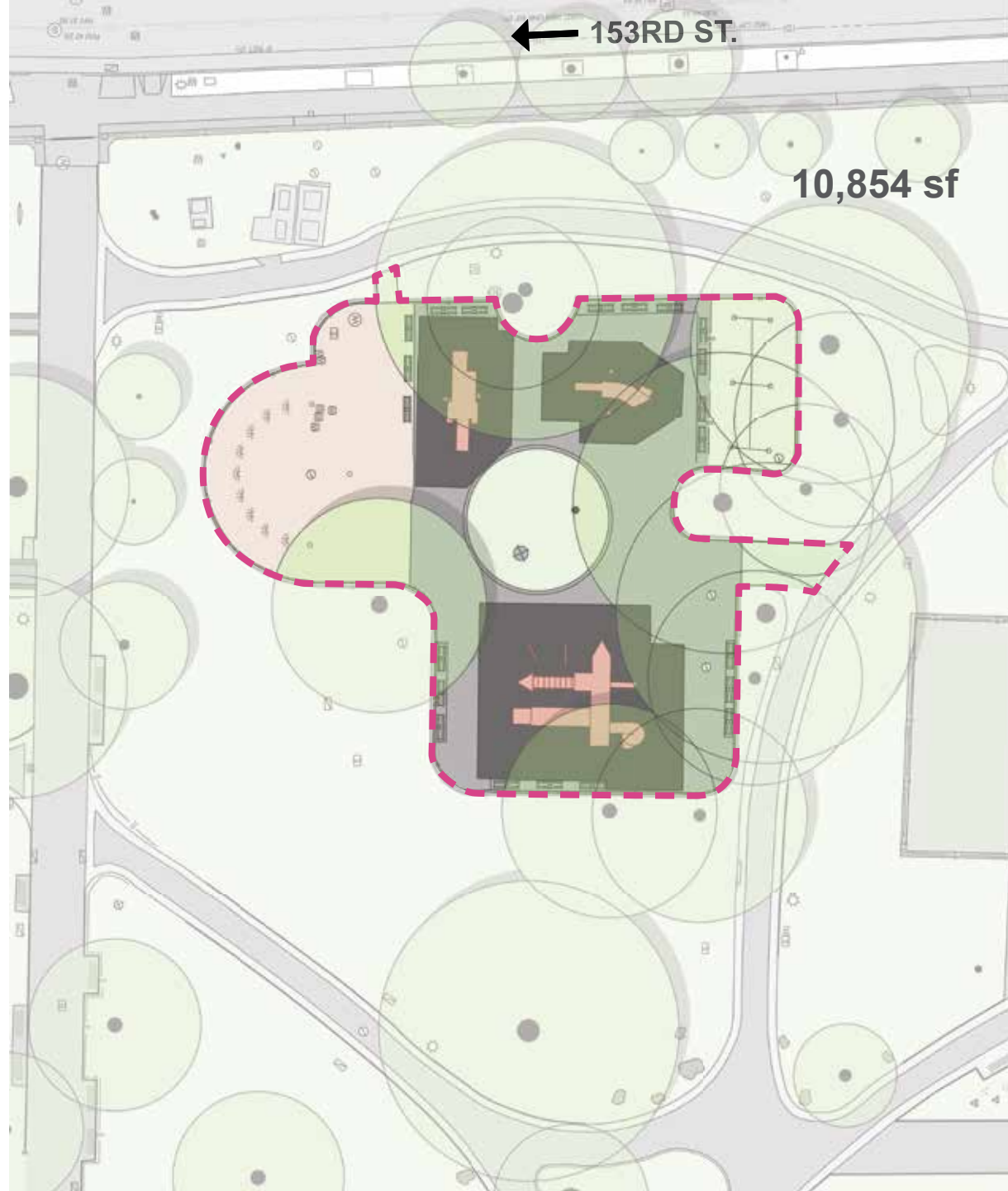
Rufus King Park Playground | Proposed Schematic- Playground



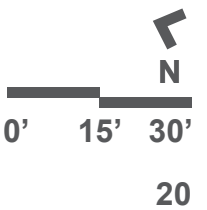


Rufus King Park Playground | Existing and Proposed Courts Pavement Plan





Rufus King Park Playground | Existing Existing and Proposed Playground Pavement Plan





Rufus King Park Playground | Section 5-12 Year Old Access

LEGEND

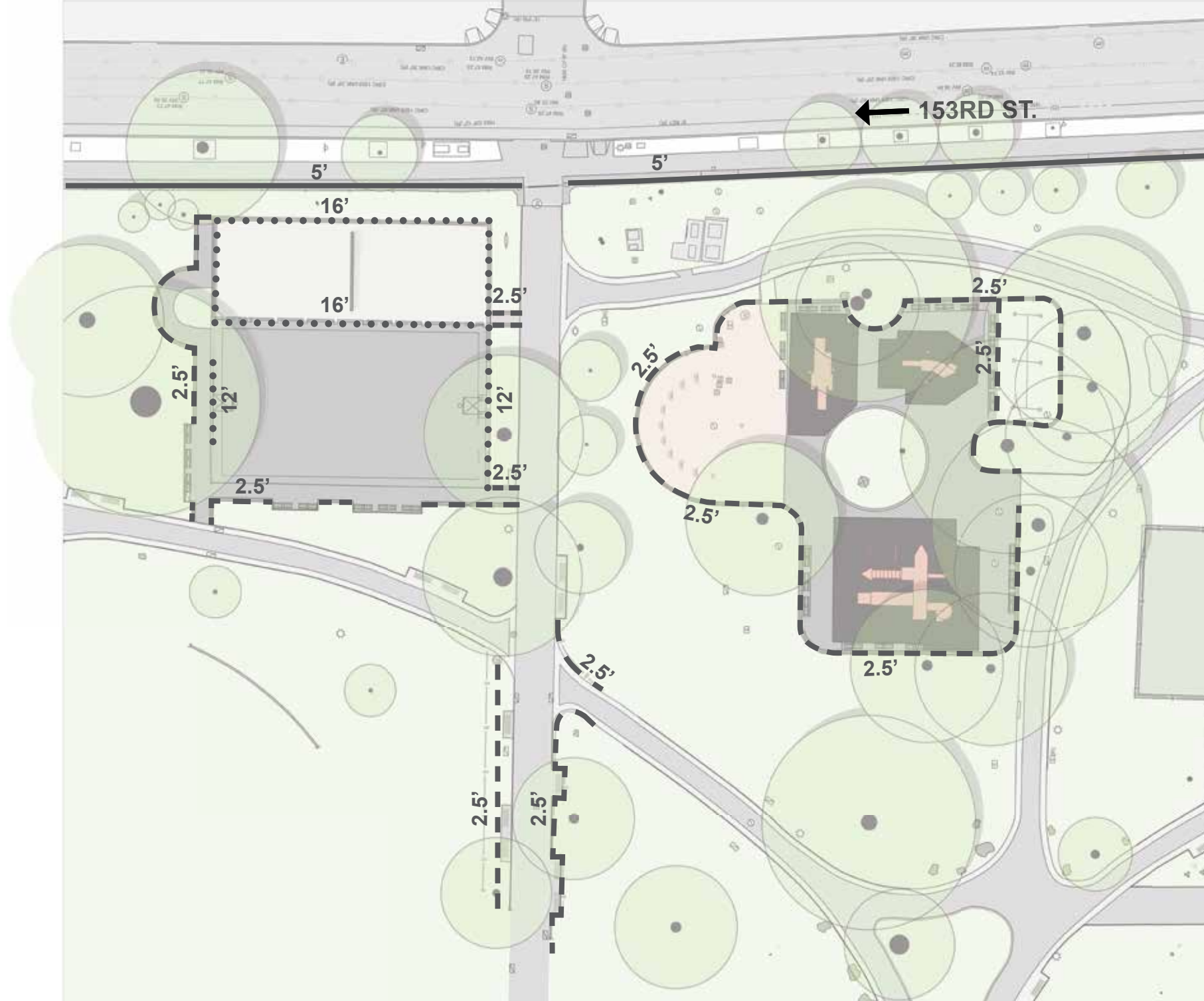
■ EXISTING FENCES (x = HEIGHT)

.....^x..... CLF

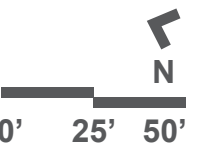
—^x— STEEL

- - -^x- - - PIPE RAIL

Existing pipe rail fence surrounding playground to be removed



Rufus King Park Playground | Existing Fencing Diagram





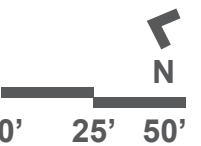
LEGEND

- EXISTING FENCES (x = HEIGHT)
-x..... CLF
- x—— STEEL
- - -x- - - PIPE RAIL
- TALL / SPORT FENCES 8' - 16' HT. (x = HEIGHT)
-x..... CLF
- LOW / PLANTING FENCES 2'-6" - 3'-6" HT. (x = HEIGHT)
- - -x- - - PIPE RAIL
- PLAY PANELS FENCES 2'-6" - 3'-6" HT. (x = HEIGHT)
- - -x- - - PANELS

Proposed pipe rail fence with finial around playground to match existing fence in park



Rufus King Park Playground | Fencing Diagram





Standard Grey



Light Grey and Euro Blue Concrete



Painted Games



Painted Games Colors



Pipe Rail Fence



Central Park Settee



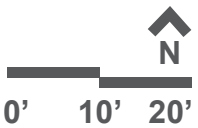
Type E Drinking Fountain



Spray Mister at Basketball



Bike Repair Station





Columnar Beech
Fagus sylvatica



Chinese Elm
Ulmus parvifolia



Japanese Flowering Cherry
Prunus serrulata 'Kwanzan'



Rufus King Park Playground | Proposed Schematic

APPENDIX



NYC Parks

Rufus King Park Playground |

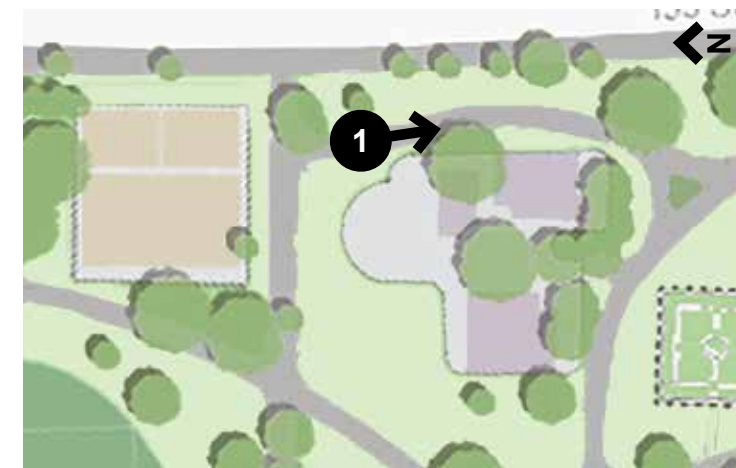


Mary Alsop King's dress- inspiration for spray shower and painted games





Gazebo on west side of park





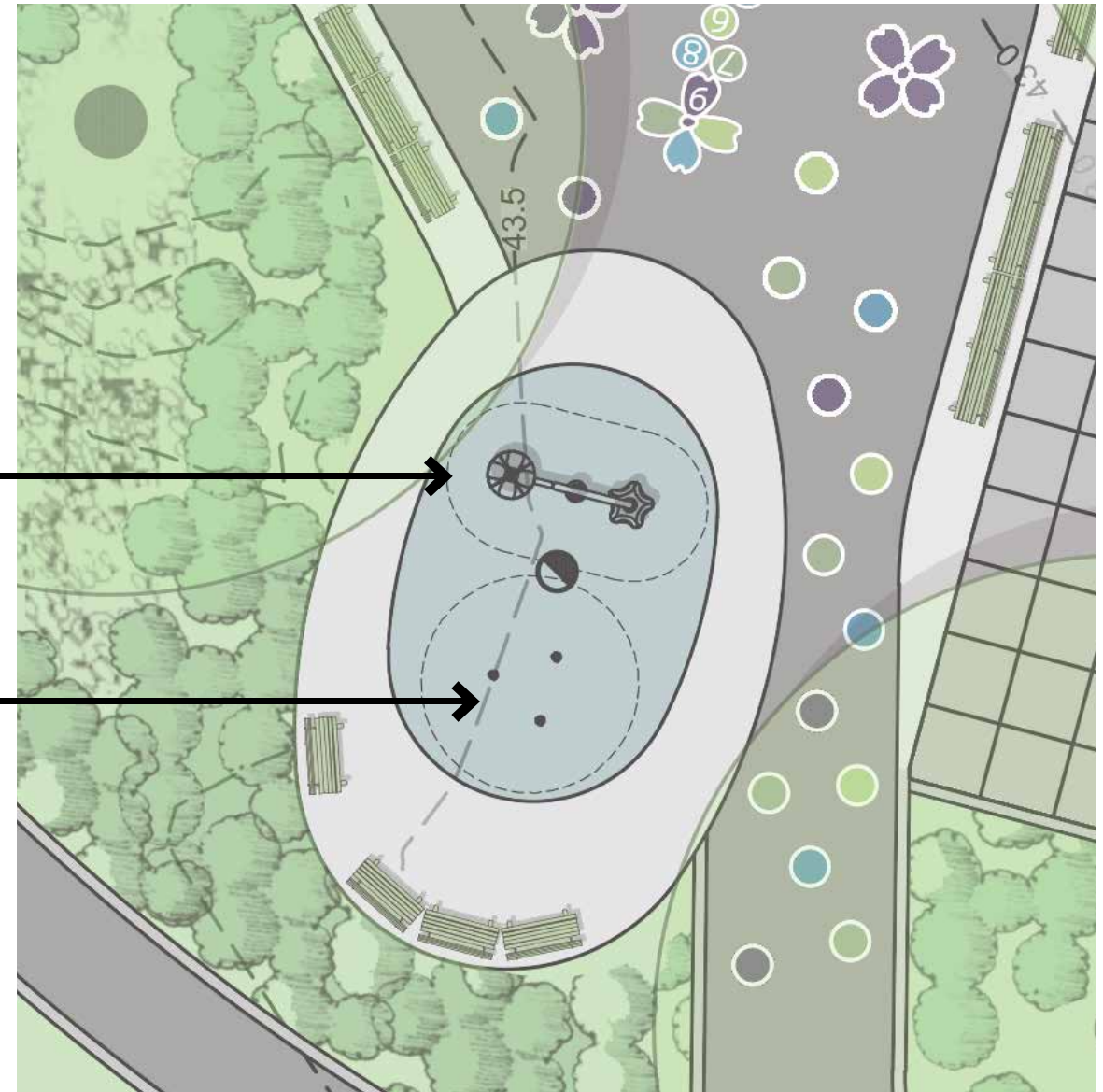
Rufus King Park Playground | Perspective View



(3) Water Jelly



(1) Overhead spray





Lilyturf
Liriope spicata



Catmint
Nepeta dropmore



Sweet Pepperbush
Clethra alnifolia



Cherry Laurel
Prunus laurocerasus



Oakleaf Hydrangea
Hydrangea quercifolia



NYC Parks

Rufus King Park Playground | Plant Palette

The current proposal is:

Preservation Department – Item 2, LPC-23-02794

**150-05 Jamaica Avenue – Rufus King House District –
Individual Landmark
Borough of Queens**

To Testify Please Join Zoom

Webinar ID: 860 5066 6497

Passcode: 669738

By Phone: 1 646-558-8656 US (New York)

877-853-5257 (Toll free) US

888 475 4499 (Toll free)

Note: If you want to testify on an item, join the Zoom webinar at the agenda’s “Be Here by” time (about an hour in advance). When the Chair indicates it’s time to testify, “raise your hand” via the Zoom app if you want to speak (*9 on the phone). Those who signed up in advance will be called first.