

The current proposal is:

Preservation Department – Item 13, LPC-22-11297

22 East 81st Street – Metropolitan Museum Historic District Borough of Manhattan

To Testify Please Join Zoom

Webinar ID: 892 9959 6293

Passcode: 261670

By Phone: 1 646-558-8656 US (New York)

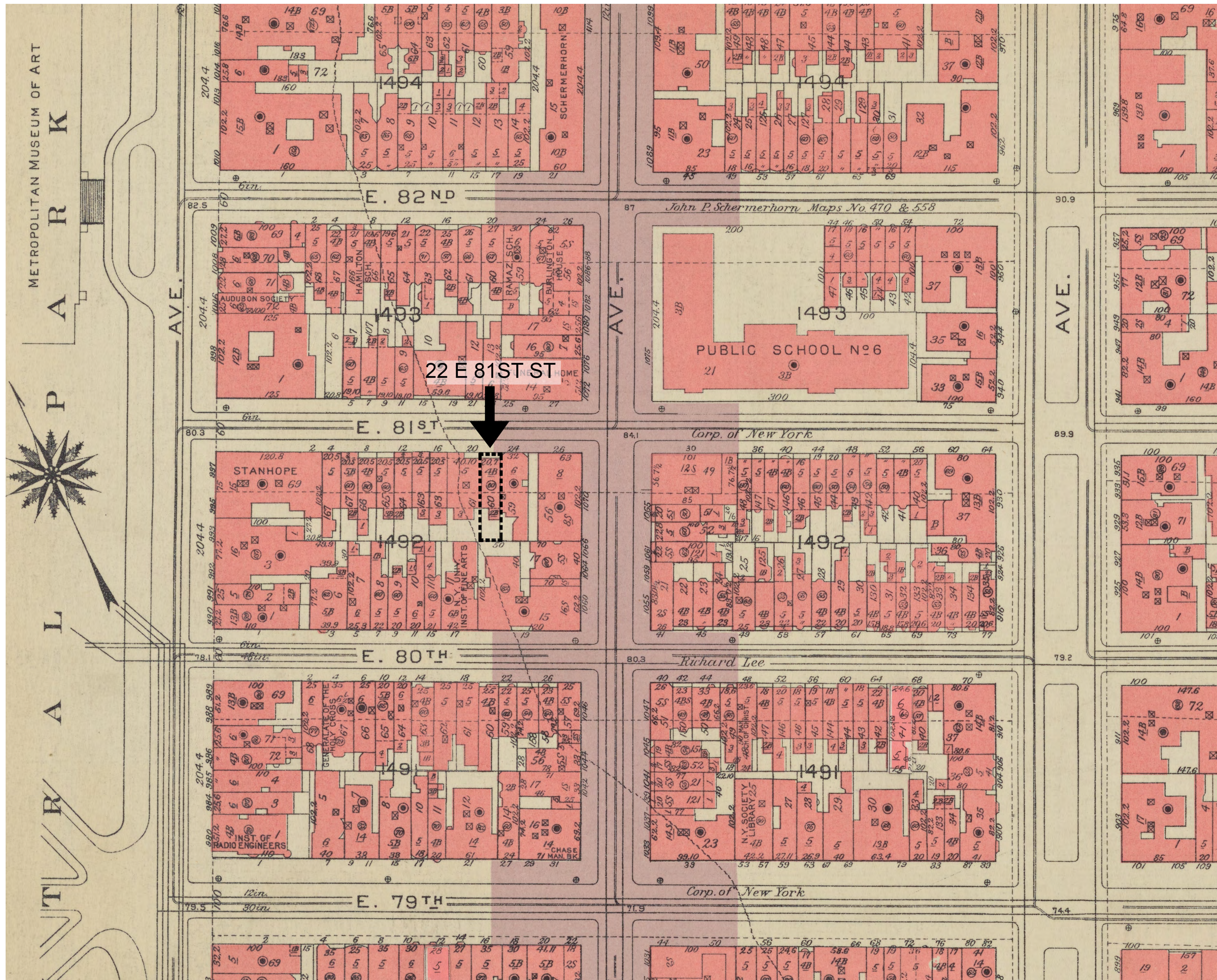
877-853-5257 (Toll free) US

888 475 4499 (Toll free)

Note: If you want to testify on an item, join the Zoom webinar at the agenda’s “Be Here by” time (about an hour in advance). When the Chair indicates it’s time to testify, “raise your hand” via the Zoom app if you want to speak (*9 on the phone). Those who signed up in advance will be called first.

22 E 81ST STREET





22 E 81ST ST - PROJECT LOCATION - BROMLEY MAP 1955-56





1 22 E 81 ST ST - 1940 TAX PHOTO
Scale N.T.S.



2 22 E 81ST ST - 1980 TAX PHOTO
Scale N.T.S.





22 E 81ST ST - EXISTING PHOTO
Scale N.T.S.

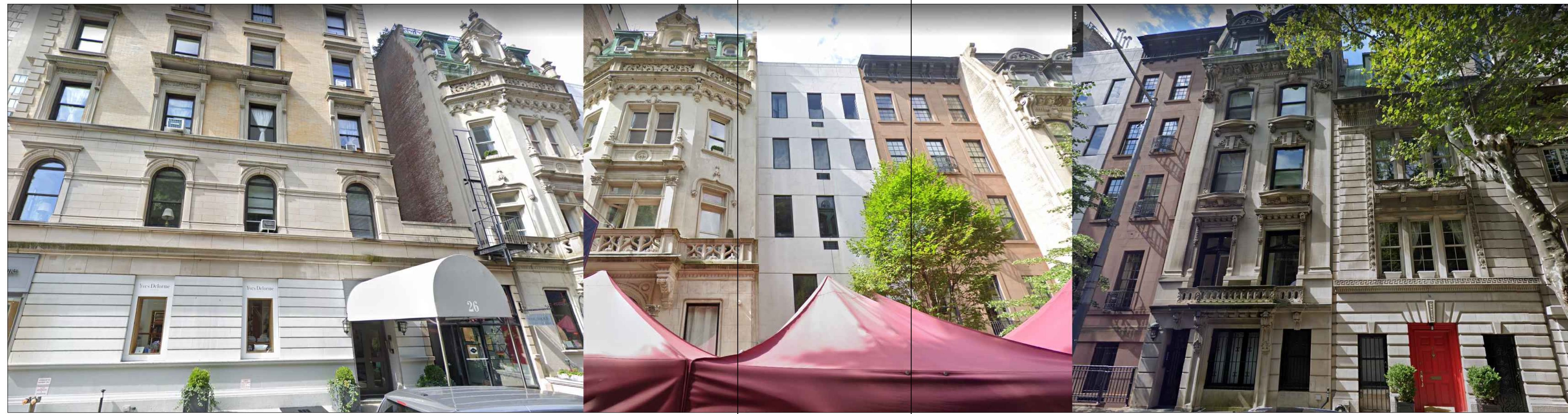


22 E 81ST ST - EXISTING PHOTO
Scale N.T.S.



LANG

277 Broadway,
Suite 106
New York City, NY 10007
212 233 9131 T
212 658 9023 F
www.langarchitecture.com



1 E 81ST ST - EXISTING STREET PANORAMA PHOTO
Scale: N.T.S.

22 EAST 81ST STREET - NEW YORK, NY



TITLE: EXISTING PHOTOGRAPHS

Scale: N.T.S.
Drawn by: LT

Rev.	06/13/2022 - LPC SET
Rev.	
Rev.	
Rev.	
Rev.	

LM-002.10



1 156 E 62ND ST - PRECEDENT
Scale N.T.S.



2 31 E 63RD ST - PRECEDENT
Scale N.T.S.





1-23 E 81ST ST - LIMESTONE FACADES
Scale N.T.S.

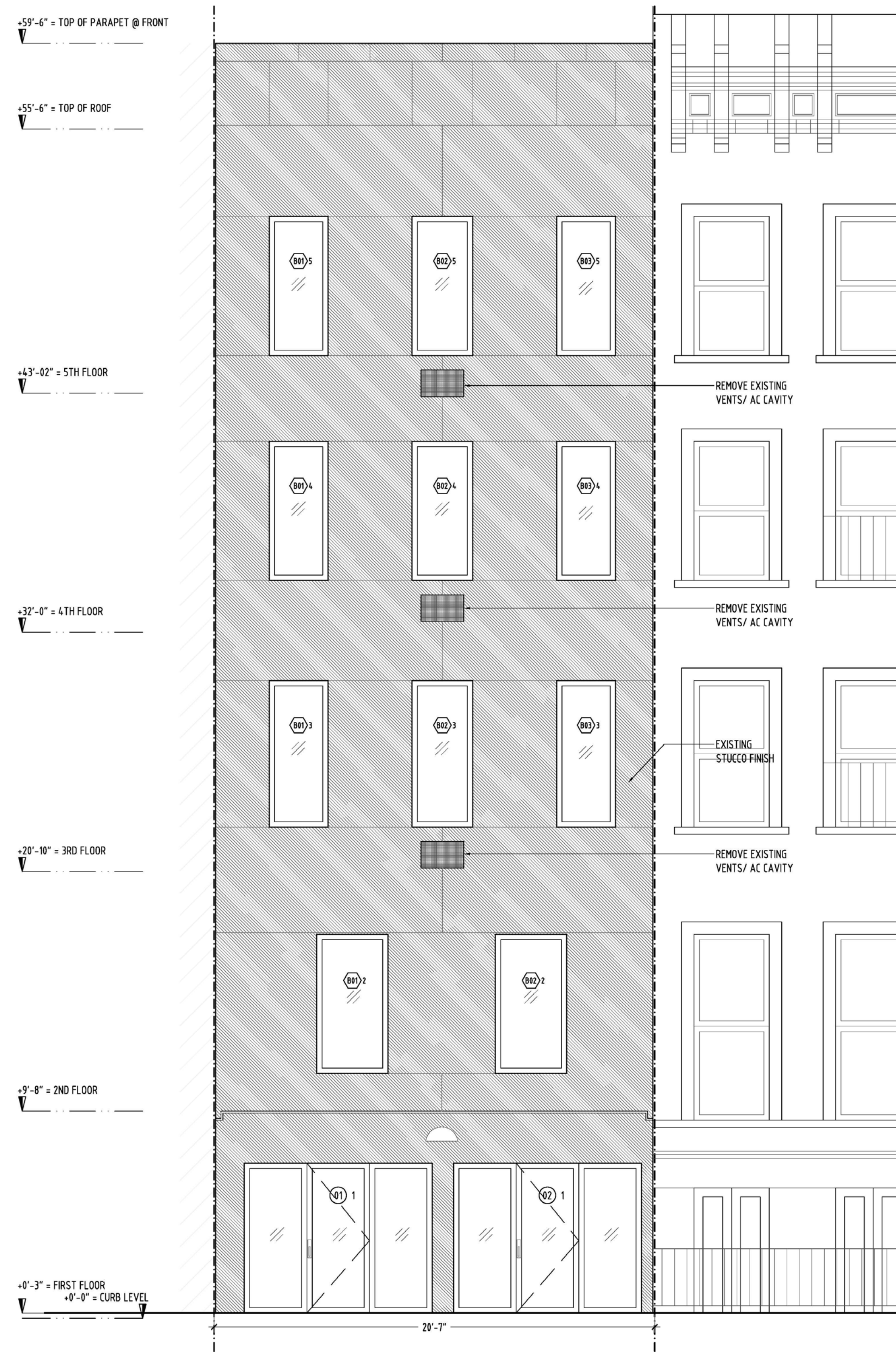


2 14-18 E 81ST ST - LIMESTONE FACADES
Scale N.T.S.

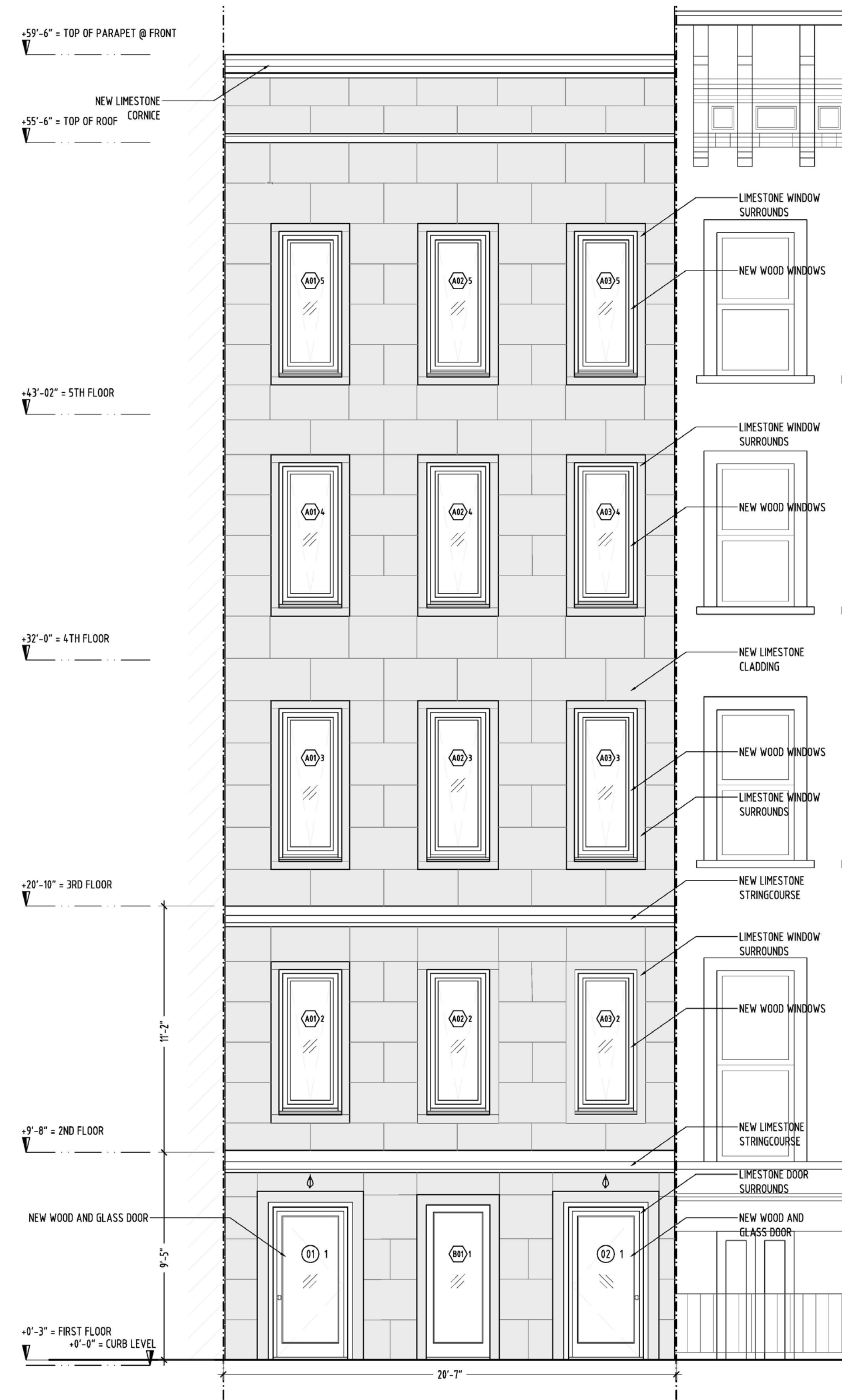


3 6 E 81ST ST - LIMESTONE FACADES
Scale N.T.S.



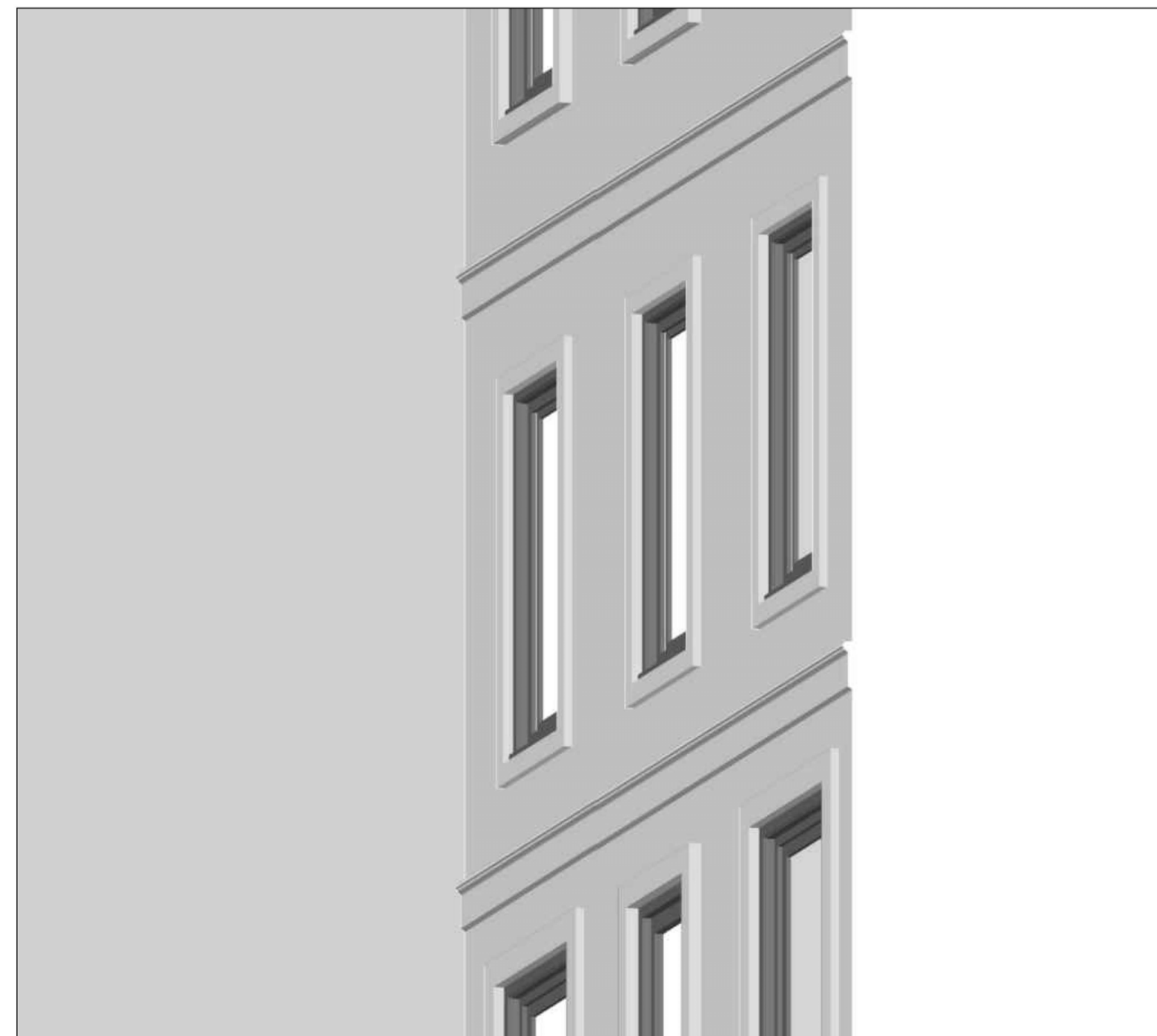


1 STREET ELEVATION - EXISTING
Scale 1/4"=1'-0"



2 STREET ELEVATION - PROPOSED
Scale 1/4"=1'-0"





WINDOW SCHEDULE

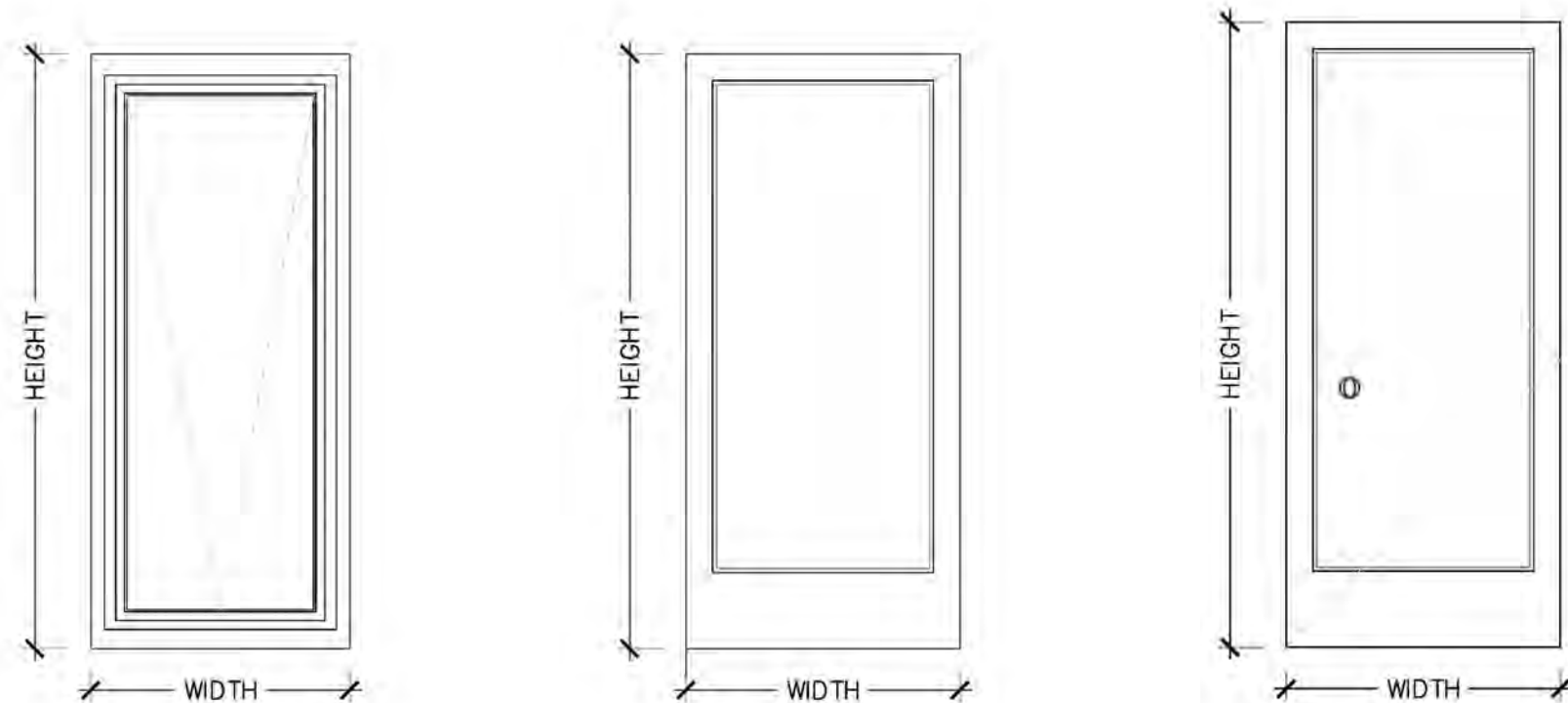
FLOOR	WINDOW #	LOCATION	TYPE	DESCRIPTION	WINDOW OPENING WIDTH X HEIGHT	GLAZING	FINISH		CASING	SUPPLIER	NOTES
							EXTERIOR	INTERIOR			
FIRST FLOOR	B01-1	LOBBY	B	FIXED PANEL	2'-10" X 7'-0"	INSULATED DOUBLE GLAZING	SOLID WOOD PAINTED MATTE BLACK RAL 9004 SIGNAL BLACK	SOLID WOOD PAINTED TBD	A	TBD	-
SECOND FLOOR	A01-2	APT	A	TILT-AND-TURN	2'-9" X 6'-6"	INSULATED DOUBLE GLAZING	SOLID WOOD PAINTED MATTE BLACK RAL 9004 SIGNAL BLACK	SOLID WOOD PAINTED TBD	A	TBD	-
	A02-2	APT	A	TILT-AND-TURN	2'-10" X 6'-6"	INSULATED DOUBLE GLAZING	SOLID WOOD PAINTED MATTE BLACK RAL 9004 SIGNAL BLACK	SOLID WOOD PAINTED TBD	A	TBD	-
	A03-2	APT	A	TILT-AND-TURN	2'-9" X 6'-6"	INSULATED DOUBLE GLAZING	SOLID WOOD PAINTED MATTE BLACK RAL 9004 SIGNAL BLACK	SOLID WOOD PAINTED TBD	A	TBD	-
THIRD FLOOR	A01-3	APT	A	TILT-AND-TURN	2'-9" X 6'-10"	INSULATED DOUBLE GLAZING	SOLID WOOD PAINTED MATTE BLACK RAL 9004 SIGNAL BLACK	SOLID WOOD PAINTED TBD	A	TBD	-
	A02-3	APT	A	TILT-AND-TURN	2'-10" X 6'-10"	INSULATED DOUBLE GLAZING	SOLID WOOD PAINTED MATTE BLACK RAL 9004 SIGNAL BLACK	SOLID WOOD PAINTED TBD	A	TBD	-
	A03-3	APT	A	TILT-AND-TURN	2'-9" X 6'-10"	INSULATED DOUBLE GLAZING	SOLID WOOD PAINTED MATTE BLACK RAL 9004 SIGNAL BLACK	SOLID WOOD PAINTED TBD	A	TBD	-
FOURTH FLOOR	A01-3	APT	A	TILT-AND-TURN	2'-9" X 6'-6"	INSULATED DOUBLE GLAZING	SOLID WOOD PAINTED MATTE BLACK RAL 9004 SIGNAL BLACK	SOLID WOOD PAINTED TBD	A	TBD	-
	A02-3	APT	A	TILT-AND-TURN	2'-10" X 6'-6"	INSULATED DOUBLE GLAZING	SOLID WOOD PAINTED MATTE BLACK RAL 9004 SIGNAL BLACK	SOLID WOOD PAINTED TBD	A	TBD	-
	A03-3	APT	A	TILT-AND-TURN	2'-9" X 6'-6"	INSULATED DOUBLE GLAZING	SOLID WOOD PAINTED MATTE BLACK RAL 9004 SIGNAL BLACK	SOLID WOOD PAINTED TBD	A	TBD	-
FIFTH FLOOR	A01-3	APT	A	TILT-AND-TURN	2'-9" X 6'-6"	INSULATED DOUBLE GLAZING	SOLID WOOD PAINTED MATTE BLACK RAL 9004 SIGNAL BLACK	SOLID WOOD PAINTED TBD	A	TBD	-
	A02-3	APT	A	TILT-AND-TURN	2'-10" X 6'-6"	INSULATED DOUBLE GLAZING	SOLID WOOD PAINTED MATTE BLACK RAL 9004 SIGNAL BLACK	SOLID WOOD PAINTED TBD	A	TBD	-
	A03-3	APT	A	TILT-AND-TURN	2'-9" X 6'-6"	INSULATED DOUBLE GLAZING	SOLID WOOD PAINTED MATTE BLACK RAL 9004 SIGNAL BLACK	SOLID WOOD PAINTED TBD	A	TBD	-

NOTES:
 1. VERIFY ALL DIMENSIONS IN FIELD PRIOR TO FABRICATION.
 2. SHOP DRAWINGS TO BE SUBMITTED FOR WINDOW TYPES.
 3. HEIGHT OF ALL KNOBS, LEVERS AND PULLS TO MATCH UNLESS OTHERWISE NOTED.
 4. WINDOWS TO BE PROVIDED WITH ALL THE PARTS REQUIRED TO FUNCTION, INCLUDING HARDWARE.
 5. WINDOW HARDWARE PARTS NOT SPECIFIED IN THIS SET TO BE PROVIDED BY GC AFTER APPROVAL BY ARCHITECT.
 6. GLASS SPECIFICATIONS TO BE CONFIRMED BY MANUFACTURER/VENDOR.

DOOR SCHEDULE

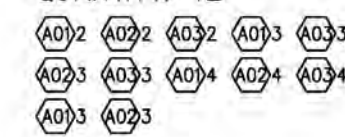
FLOOR	DOOR#	LOCATION	TYPE	FIRE RATING	MATERIAL	FINISH	THICKNESS	TYPE	DOOR OPENING WIDTH X HEIGHT	JAMB THICKNESS	HARWARE TYPE	DOOR CASING		DOOR STOP	NOTES
												ROOM SIDE	TYPE		
FIRST FLOOR	01-1	LOBBY	A	-	SOLID WOOD WITH GLASS PANEL	EXTERIOR PAINTED BLACK MATTE	3 1/8"	SWING	3'-0" X 7'-0"	2"	AA	ONE	A	YES	-
	02-2	LOBBY	A	-	SOLID WOOD WITH GLASS PANEL	EXTERIOR PAINTED BLACK MATTE	3 1/8"	SWING	3'-1" X 7'-0"	2"	AA	ONE	A	YES	-

NOTES:
 1. VERIFY ALL DIMENSIONS IN FIELD PRIOR TO FABRICATION.
 2. SHOP DRAWINGS TO BE SUBMITTED FOR DOOR TYPES.
 3. HEIGHT OF ALL KNOBS, LEVERS AND PULLS TO MATCH UNLESS OTHERWISE NOTED.
 4. DOORS TO BE PROVIDED WITH ALL THE PARTS REQUIRED TO FUNCTION, INCLUDING HARDWARE.
 5. DOOR HARDWARE PARTS REQUIRED TO FUNCTION NOT SPECIFIED IN THIS SET TO BE PROVIDED BY GC AFTER APPROVAL BY ARCHITECT.



WINDOW TYPE A

TYPE: TILT
 MATERIAL: SOLID WOOD
 EXTERIOR TRIM: WOOD
 EXTERIOR FINISH: BLACK MATTE PAINT
 GLASS: INSULATED DOUBLE GLASS
 QUANTITY: 12



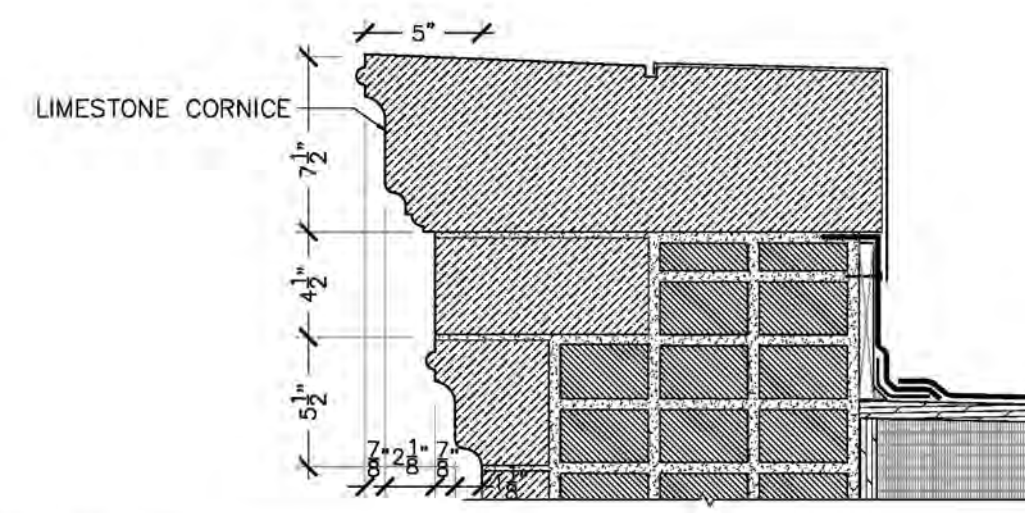
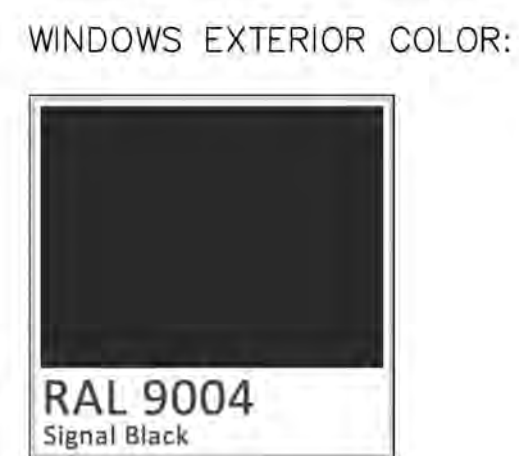
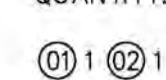
WINDOW TYPE B

TYPE: FIXED PANEL
 MATERIAL: SOLID WOOD
 EXTERIOR TRIM: WOOD
 EXTERIOR FINISH: BLACK MATTE PAINT
 GLASS: INSULATED DOUBLE GLASS
 QUANTITY: 1

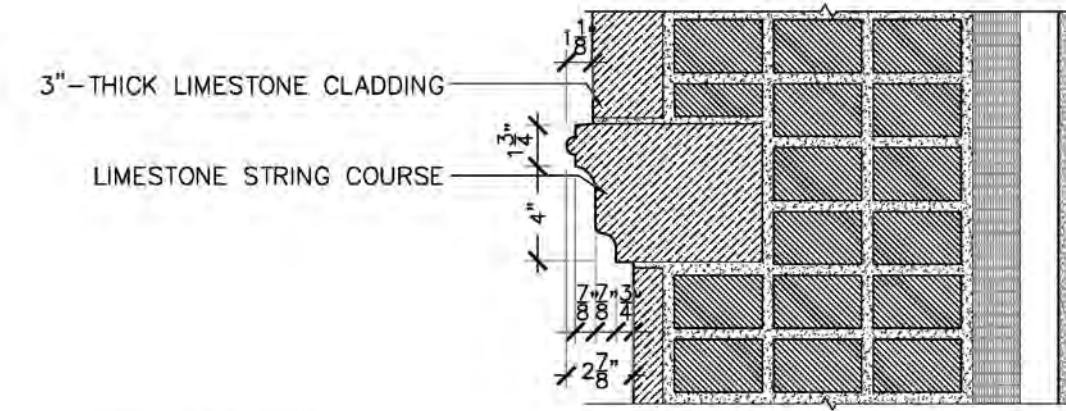


DOOR TYPE A

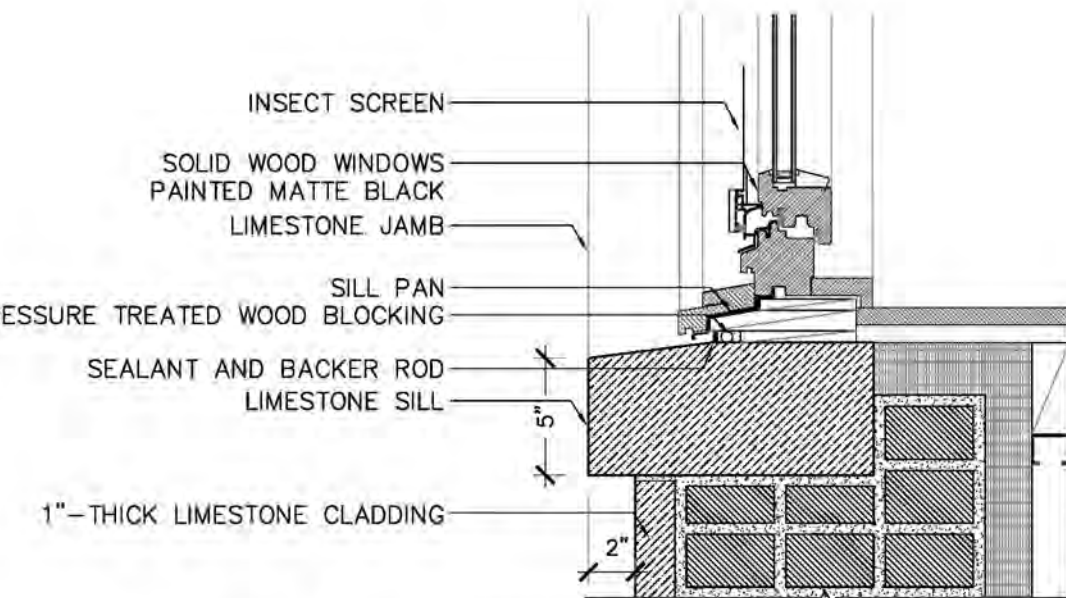
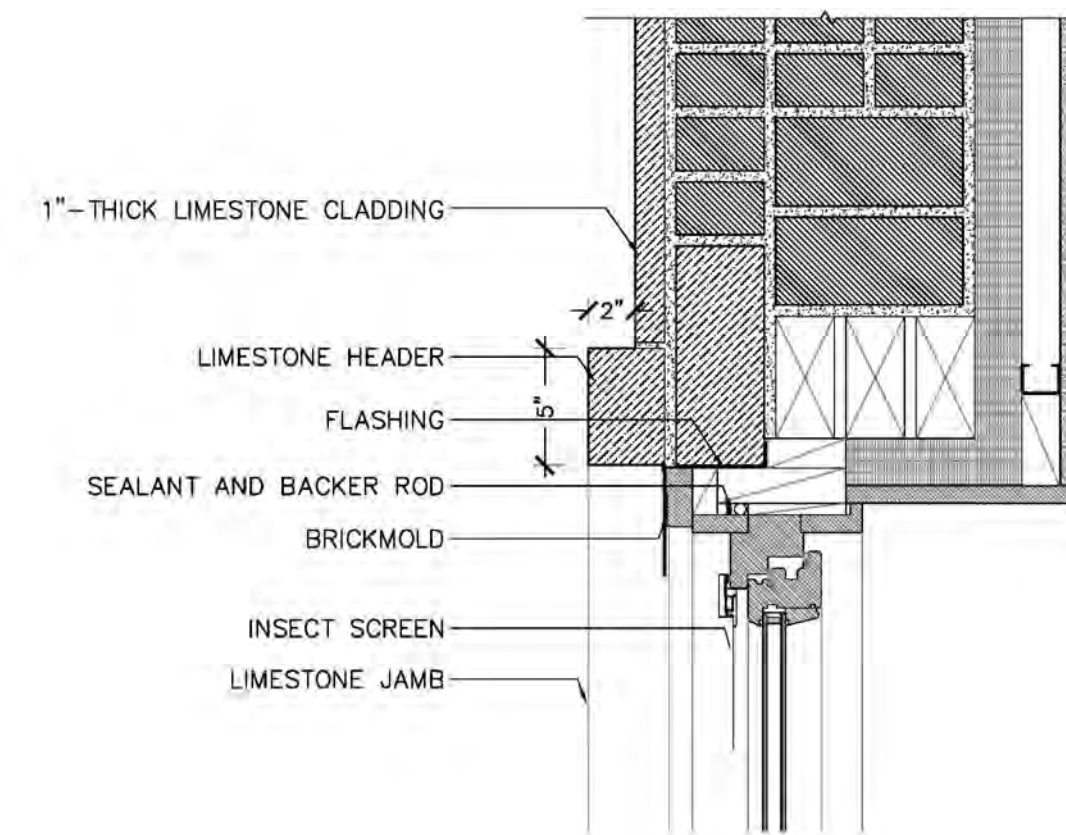
THICKNESS: 3-1/8"
 MATERIAL: SOLID WOOD WITH GLASS
 EXTERIOR TRIM: WOOD
 TYPE: SWINGING
 FINISH: EXTERIOR PAINTED BLACK MATTE
 QUANTITY: 2



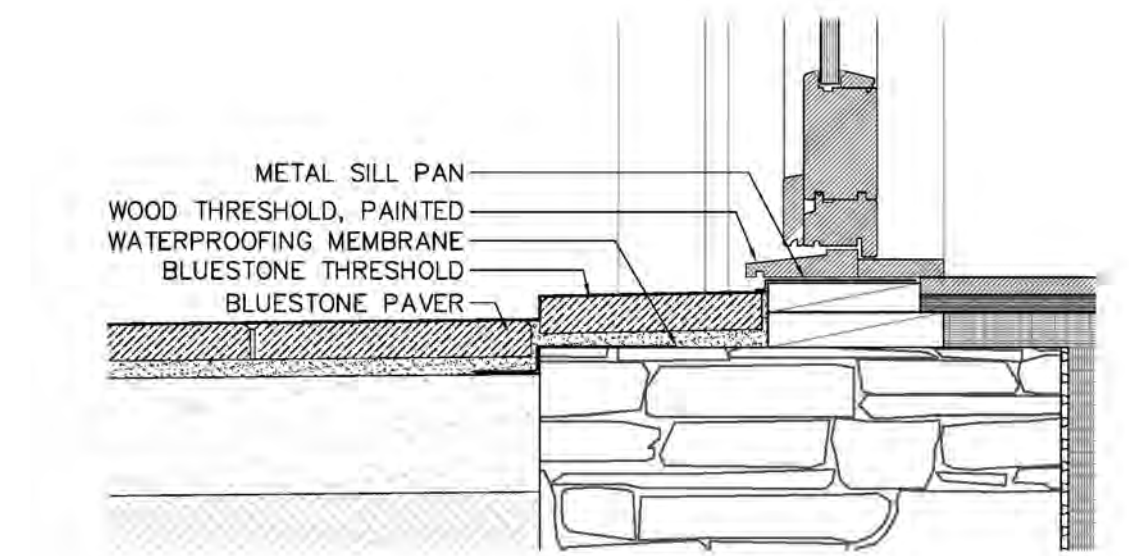
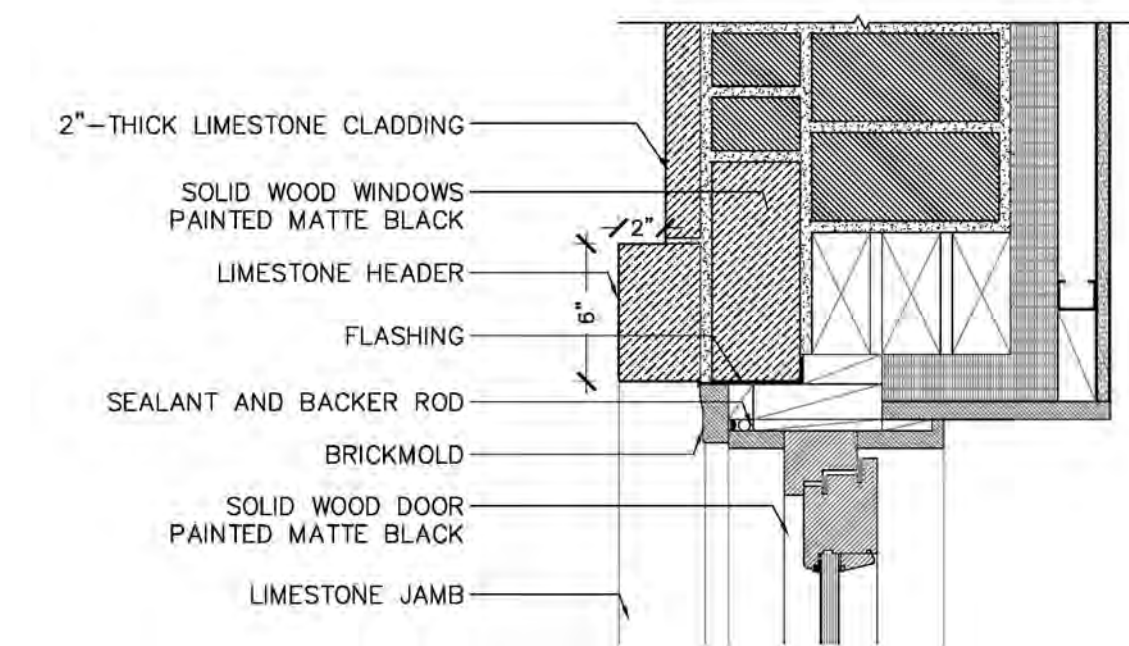
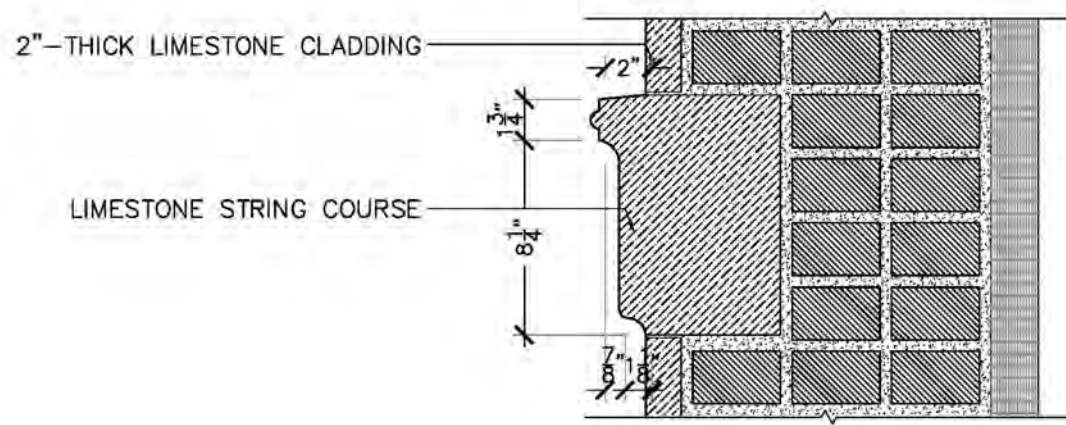
1 CORNICE DETAIL
 Scale : 1-1/2"=1'-0"



2 STRINGCOURSE
 Scale : 1-1/2"=1'-0"



3 STREET ELEVATION - PROPOSED
 Scale : 1-1/2"=1'-0"



The current proposal is:

Preservation Department – Item 13, LPC-22-11297

22 East 81st Street – Metropolitan Museum Historic District Borough of Manhattan

To Testify Please Join Zoom

Webinar ID: 892 9959 6293

Passcode: 261670

By Phone: 1 646-558-8656 US (New York)

877-853-5257 (Toll free) US

888 475 4499 (Toll free)

Note: If you want to testify on an item, join the Zoom webinar at the agenda’s “Be Here by” time (about an hour in advance). When the Chair indicates it’s time to testify, “raise your hand” via the Zoom app if you want to speak (*9 on the phone). Those who signed up in advance will be called first.