

October 11th, 2022
Public Hearing

The current proposal is:

Preservation Department – Item 4, LPC-23-01837

Governors Island – Governors Island Historic District Borough of Manhattan

To Testify Please Join Zoom

Webinar ID: 853 8078 4078

Passcode: 813151

By Phone: 1 646-558-8656 US (New York)

877-853-5257 (Toll free) US

888 475 4499 (Toll free)

Note: If you want to testify on an item, join the Zoom webinar at the agenda's "Be Here by" time (about an hour in advance). When the Chair indicates it's time to testify, "raise your hand" via the Zoom app if you want to speak (*9 on the phone). Those who signed up in advance will be called first.

Governors Island Site Lighting

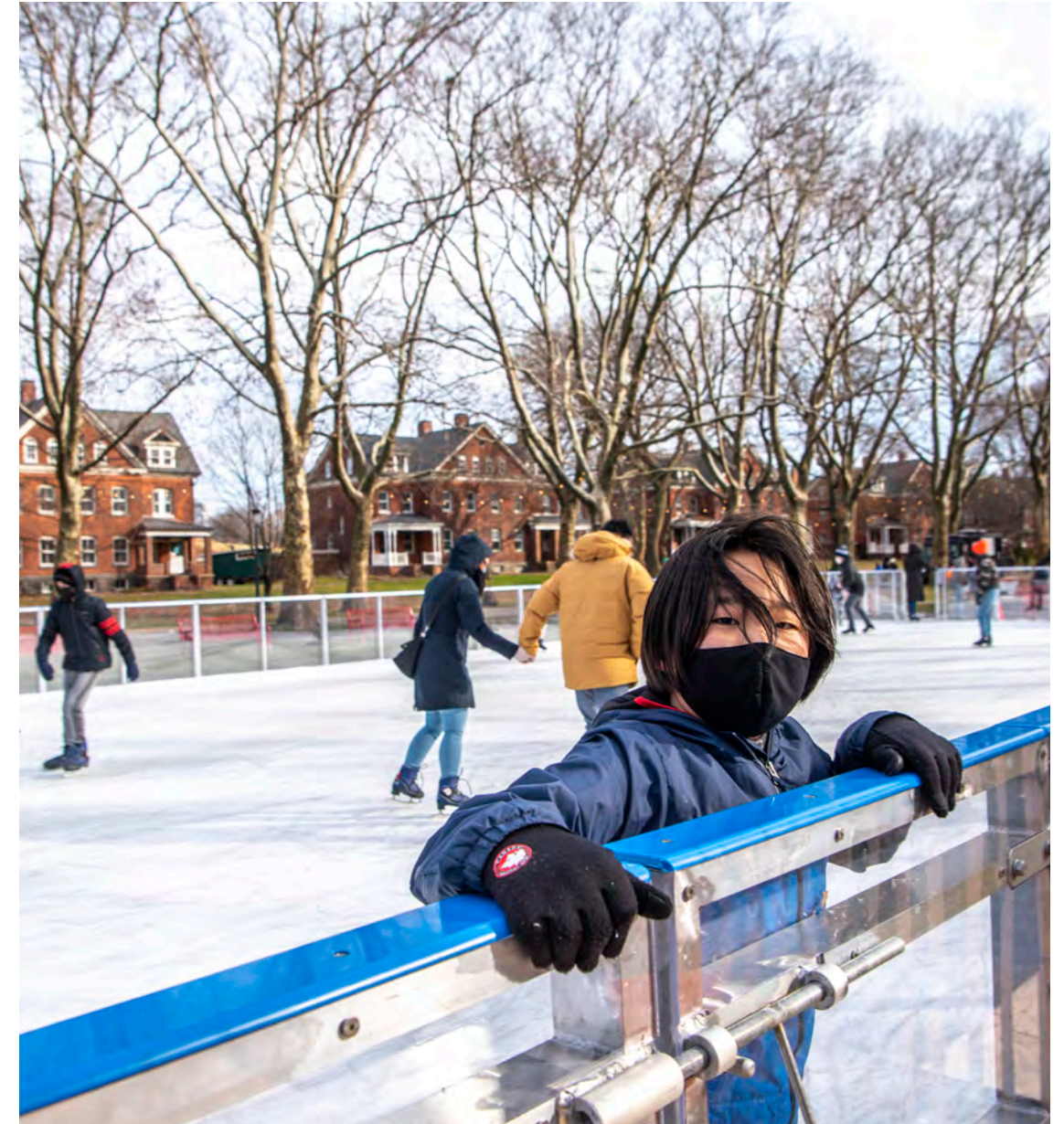
Landmarks Preservation Commission Presentation

October 11, 2022

The Trust for Governors Island

Recent Developments

- Expanded year-round public access with first winter season in 2021
- Extended hours with increased food, beverage, arts and entertainment options in the evening
- A growing tenant community in the Historic District including plans for an expansion of the New York Urban Assembly Harbor School, year-round cultural tenants, and new visitor amenities
- 1M annual visitors and growing



*Above left: Harbor School students working on marine habitat.
Below left: Visitors gather for an outdoor film on the Parade Grounds.
Right: Visitors enjoy the ice rink at the first Winter Village on the Island in early 2022.*

The Trust for Governors Island

Historic District at a Glance

- Approximately 50 landmarked buildings with 1M sq ft available space for adaptive reuse
- Growing community of educational, cultural and non-profit tenants
- Active plans to identify partners to breathe new life into historic buildings:
 - Center for Climate Solutions Anchor Institution RFP (active)
 - Nolan Park Cultural Campus
 - Harbor School Expansion
 - Food, Beverage, Amenity & Hospitality RFP (active)
- Ongoing investment upgrading all of the Historic District utility mains and electric distribution equipment



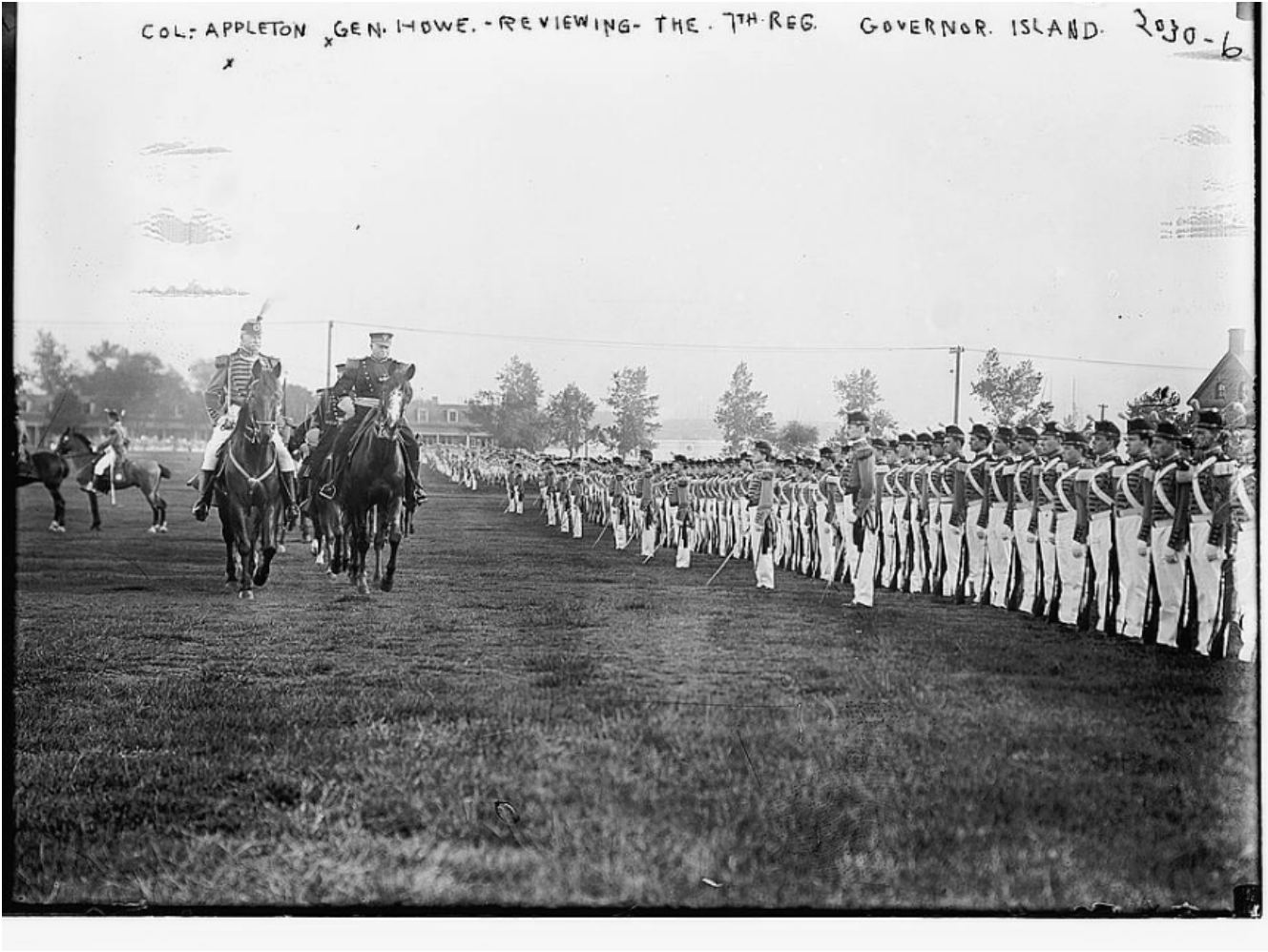
Right: Map of current and planned tenants on Governors Island.
Below: Logos of current tenants..



Historic Lighting - US Army

Governors Island Historic District

Historic photos of Governors Island show the use of utility poles with overhead wires throughout.



Left: Col. Appleton and General Howe observe the 7th Regiment at the Parade Grounds, no date.
Above right: A concrete utility pole is seen at the right of the image.
Below right: A garden party at the parade grounds in 1908 showing utility poles along the edges of the lawn area.

Historic Lighting - US Army

Governors Island Historic District

Historic photos of Governors Island show the use of utility poles with overhead wires throughout, as well as varied lighting types.

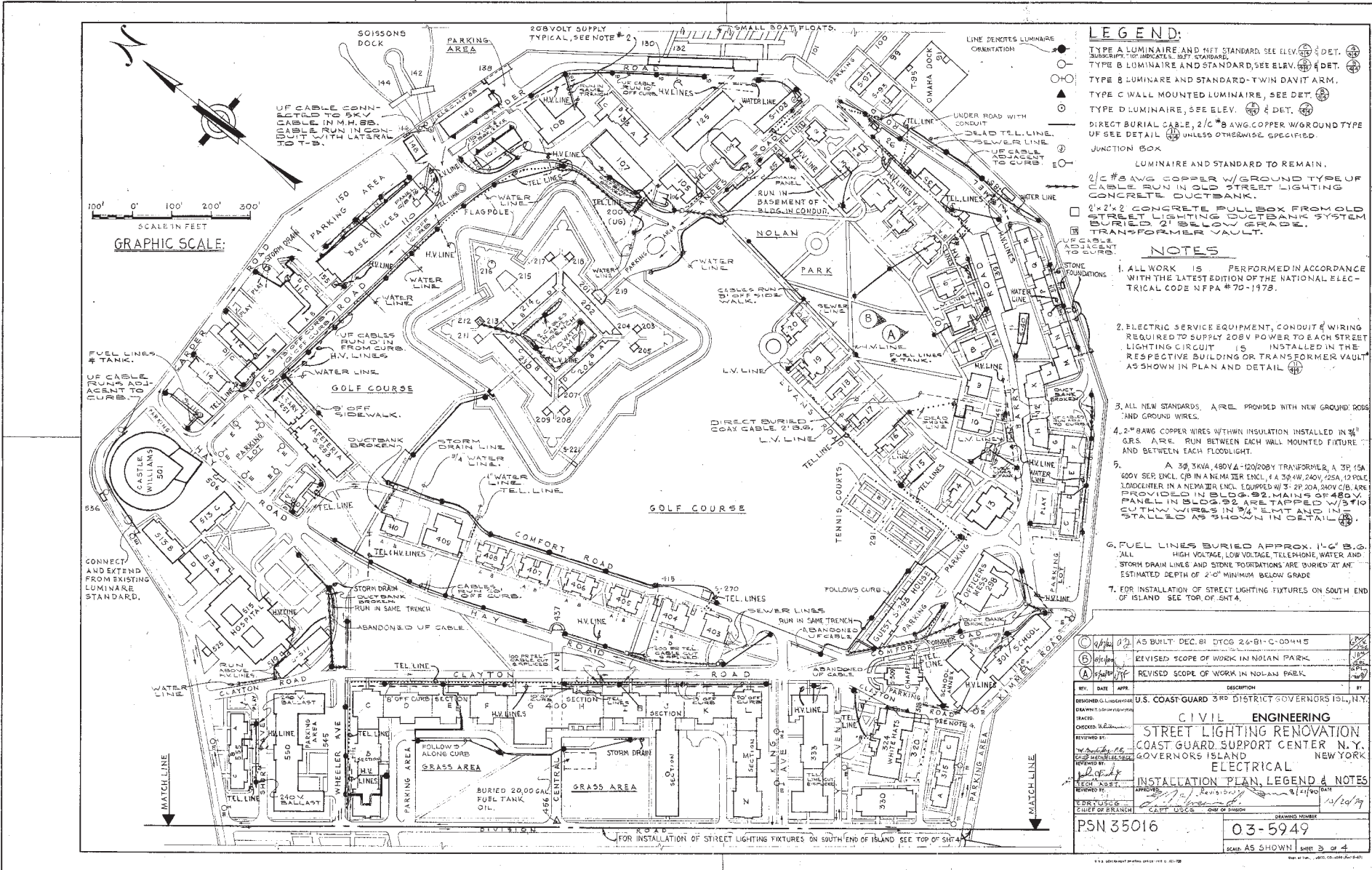


Left: Headquarters and New York Arsenal, no date.
Above right: A globe light is seen in photo looking back towards Manhattan from 1933.

Historic Lighting - US Coast Guard

Governors Island Historic District

A drawing originally created in 1979 by the US Coast Guard, and updated through 1983 shows varied lighting types throughout the Historic District.

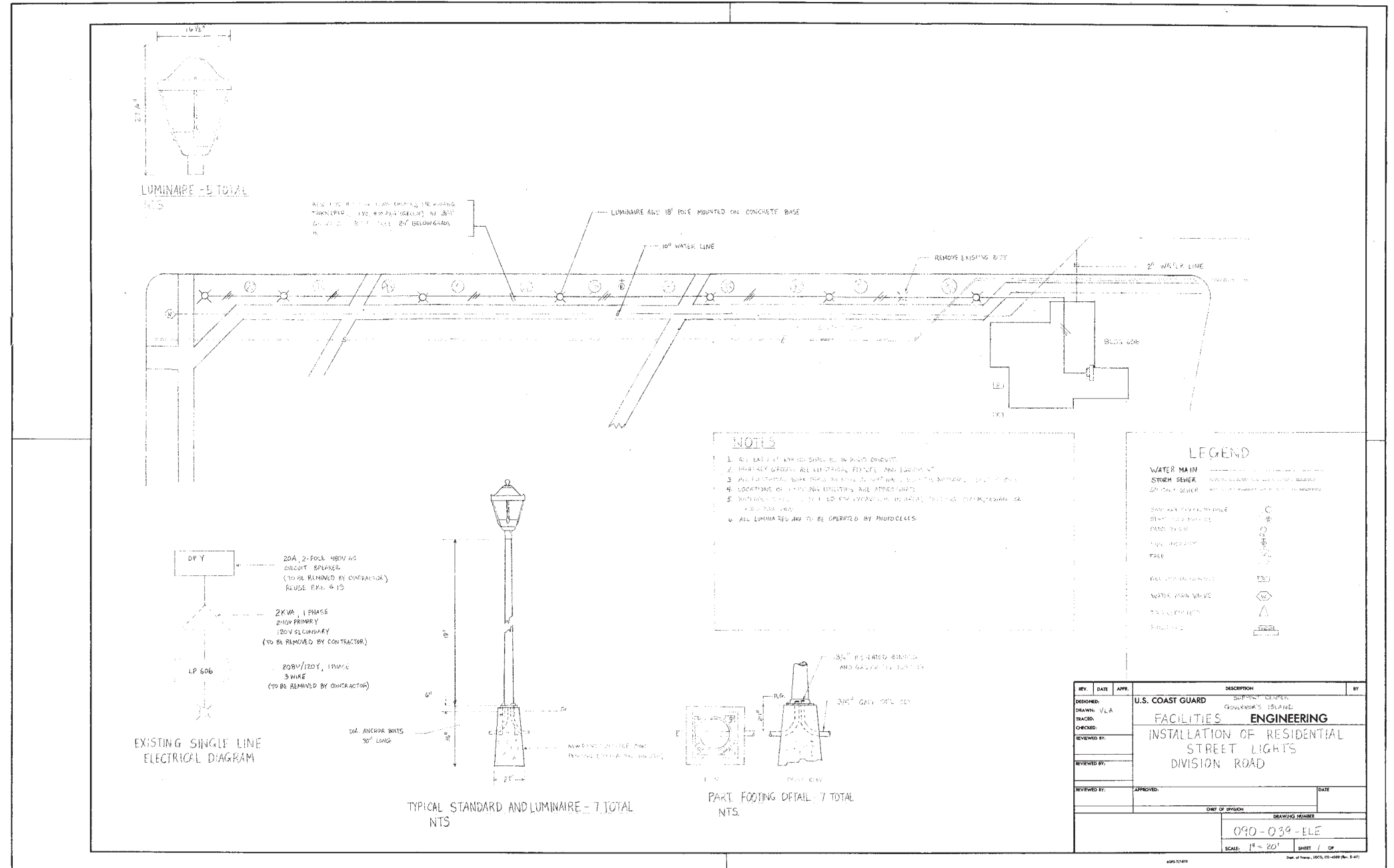


Right: USCG drawing of Governors Island Historic District showing existing lighting systems.

Historic Lighting - US Coast Guard

Governors Island Historic District

A drawing originally created by the US Coast Guard (no date), shows a light post once installed along Division Road.



Right: USCG drawing of a lighting post type along Division Road.

Existing Lighting

Governors Island Historic District

The Historic District remains dark after sunset. Generator powered temporary lights are brought in for public events like the recent Summer movie nights.



Left: Nolan Park at dusk.

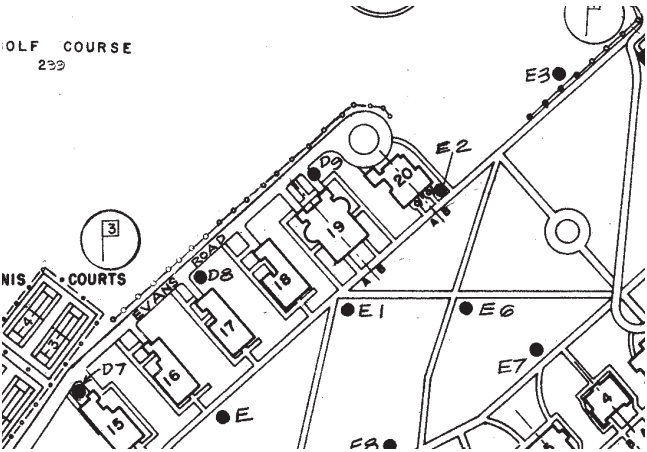
Above right: Looking towards the South Battery at night.

Below right: the view towards the Island showing the park lighting and adjacent unlit area..

Existing Lighting

Governors Island Historic District

The varied existing lighting types across the Island are shown in typical conditions in photos at the right. In addition to existing lighting being inconsistent and in varying states of disrepair, the power sources for the lights are decentralized, often coming from nearby buildings. The proposed lighting will put all exterior lighting on their own circuits, powered by existing load centers throughout the Island. This will make for easier long-term maintenance of the new system.



Left to Right: Lighting south of Liggett Hall, east of Section O in a parking area.
Lighting in Nolan Park and along some of the Island perimeter.
Typical lighting along perimeter roads.
West 8 lighting installed in the Historic District.

Existing Lighting & West 8 Installation

Governors Island Historic District

In 2013, lights from the new park on the South Island were installed within the Historic District.

Landmarks Preservation Commission approved the installation of these lights in 2012.

All existing lighting in the Historic District will be replaced with the proposed lighting design.



Right: Drawing of Governors Island Historic District showing existing lighting in blue, with 'West 8' park lights in red.

Proposed Lighting

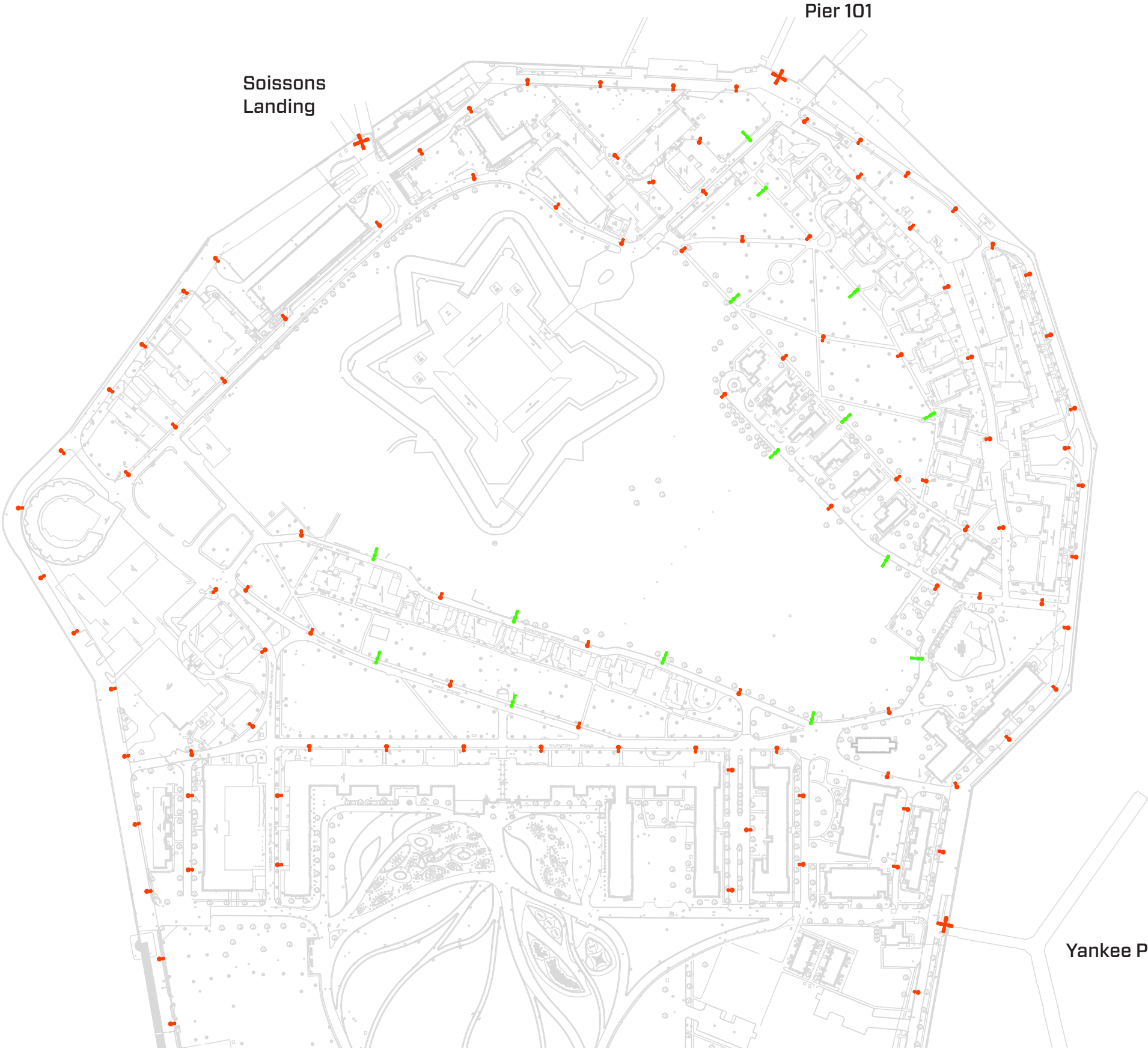
Governors Island Historic District

The proposed lighting plan would replace all existing lighting on the Island with the new, unified lighting typology, including new mast lights at upland pier locations.

Proposed lighting will provide lighting coverage for all vehicular and pedestrian pathways throughout the Island.

- Moonlight + streetlight ●
- Streetlight/mast light ●

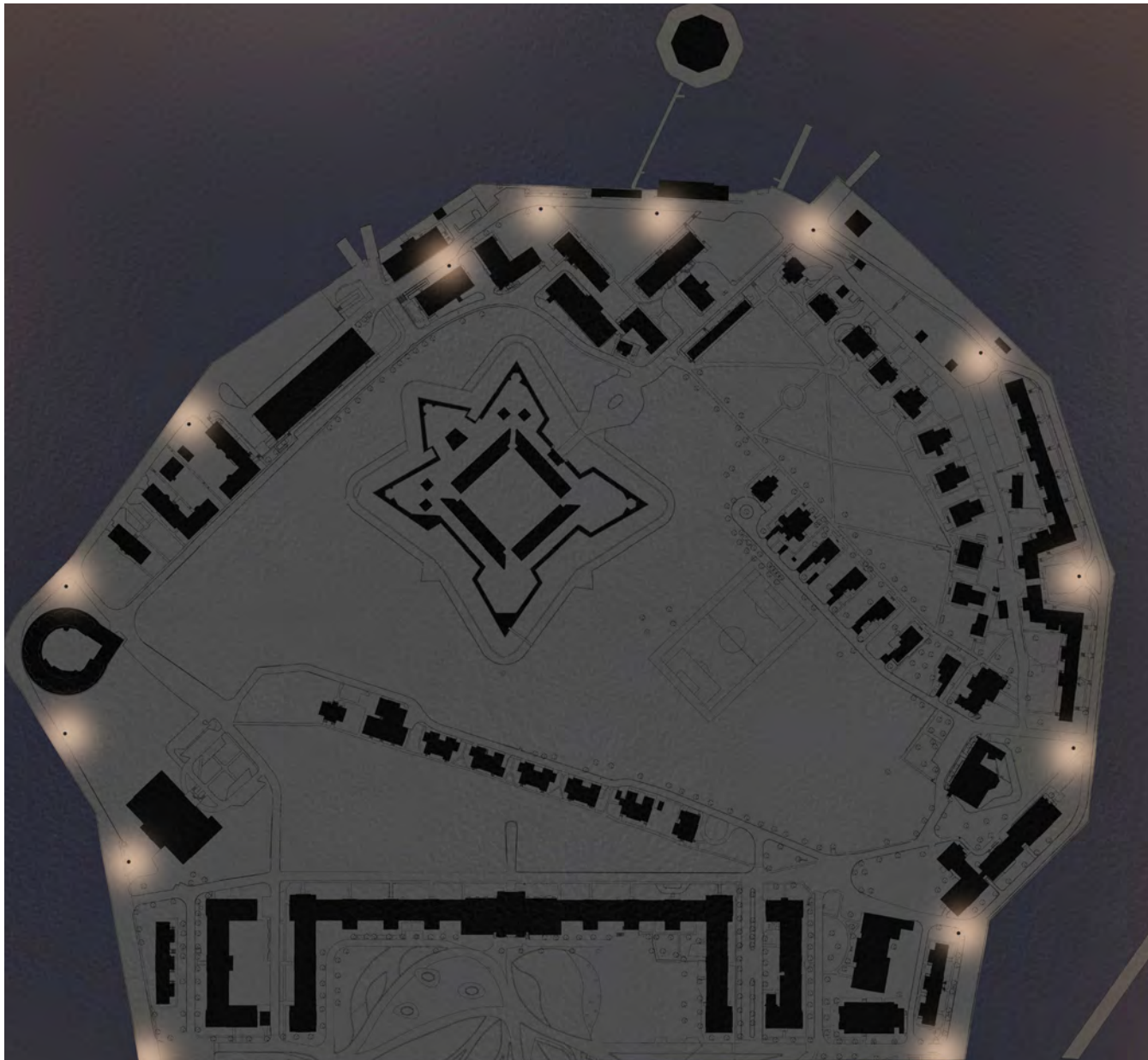
Right: Drawing of Governors Island Historic District showing proposed lighting in red and green. Green represents combination posts that have both a moonlight and streetlight.



Proposed Lighting

Governors Island Historic District - Concept Plan

Pedestrian or streetlights represent the majority of lighting proposed throughout the Island. Installed 16ft above grade, these lights cast a warm light for pedestrian and vehicular pathways along the Island perimeter and throughout the Historic District.



Left: Rendered concept plan showing proposed ‘streetlights’ throughout the Historic District.
Right: Rendered elevation showing the typical perimeter light post.

Proposed Lighting

Governors Island Historic District - Concept Plan

Along the Island interior, the addition of cooler ‘moonlights’ complement the warmer pedestrian street lights to provide ambient lighting at key open spaces within the Historic District.

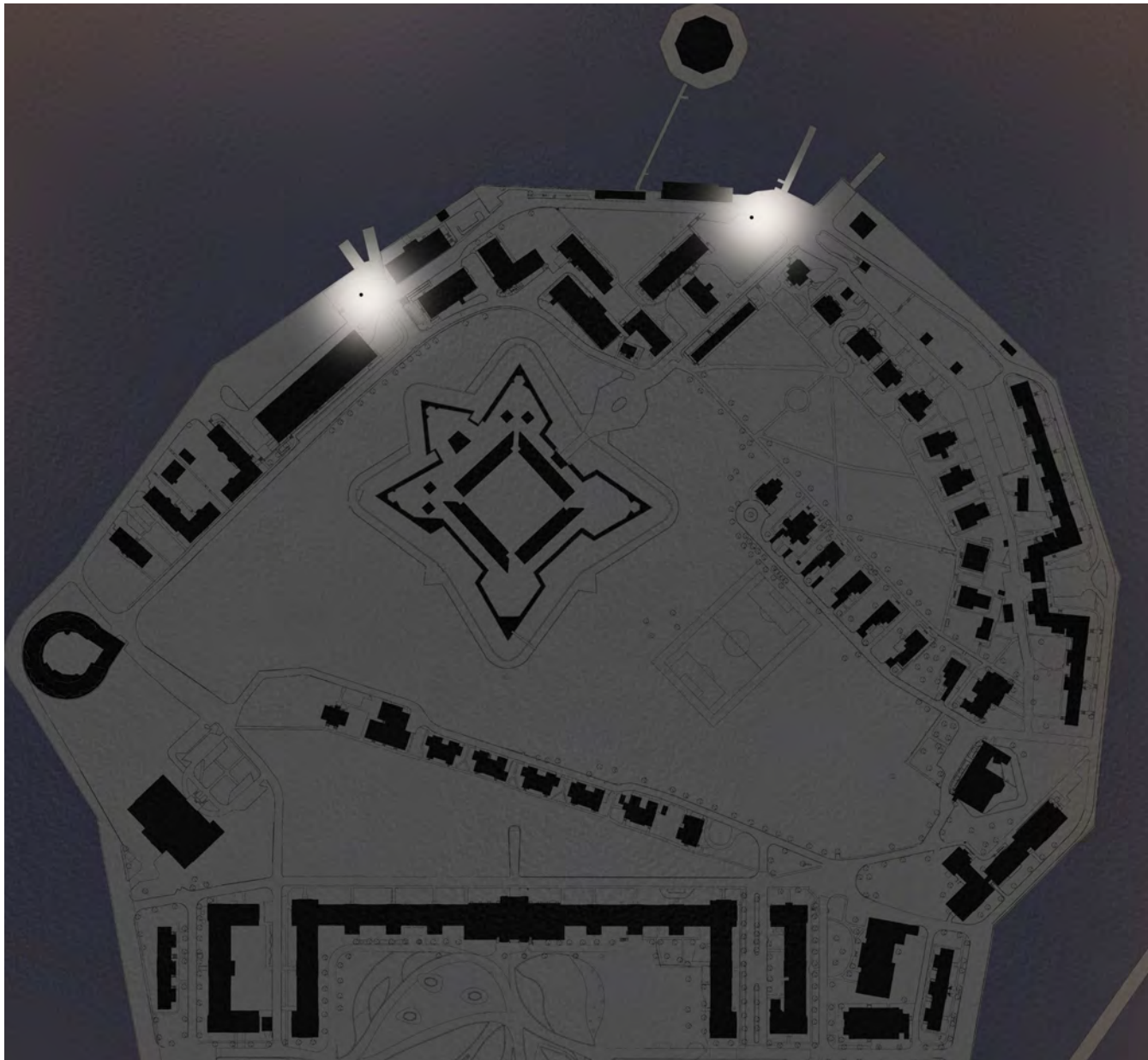


Left: Rendered concept plan showing proposed ‘moonlights’ throughout the Historic District.
Right: Rendered elevation showing the typical interior light post.

Proposed Lighting

Governors Island Historic District - Concept Plan

At each pier, a higher density of ‘moonlights’ are bundled on one post to provide lighting at each pier landing within the Historic District.



Left: Rendered concept plan showing proposed mast lights throughout the Historic District.
Right: Rendered elevation showing the typical mast light..

Proposed Lighting

Governors Island Historic District - Concept Plan

The proposed ‘kit of parts’ lighting system remains flexible and addresses the varied campus conditions within the Historic District while providing enough light to safely travel the interior and perimeter roadways by foot, bicycle or vehicle.



Rendered elevation showing ‘kit of parts’ proposed lighting.

Proposed Lighting

Governors Island Historic District - Nolan Park Lighting Mock-up



*Rendered elevation showing proposed combination pole of streetlight and moonlight in Nolan Park.
Elevation of Building 20 shown at right.*

Proposed Lighting

Governors Island Historic District - Nolan Park Lighting Mock-up



Left: Photograph of lighting mock-up in Nolan Park looking back towards Manhattan.
Right: Photograph of same mock-up showing the combination moonlight and streetlight on one post.

Proposed Lighting
Governors Island Historic District - Nolan Park Lighting Mock-up



*Left: Photograph of lighting mock-up in Nolan Park with Building 9 at background.
Right: Photograph of same mock-up showing the combination moonlight and streetlight on one post.*

Proposed Lighting

Governors Island Historic District - Nolan Park Lighting Mock-up



Photographs of revised lighting mock-up in Nolan Park with single moonlight and streetlight.

Proposed Lighting

Governors Island Historic District - Perimeter Lighting Mock-up



Rendered elevation showing proposed streetlight at Island perimeter roads.

Proposed Lighting

Governors Island Historic District - Perimeter Lighting Mock-up

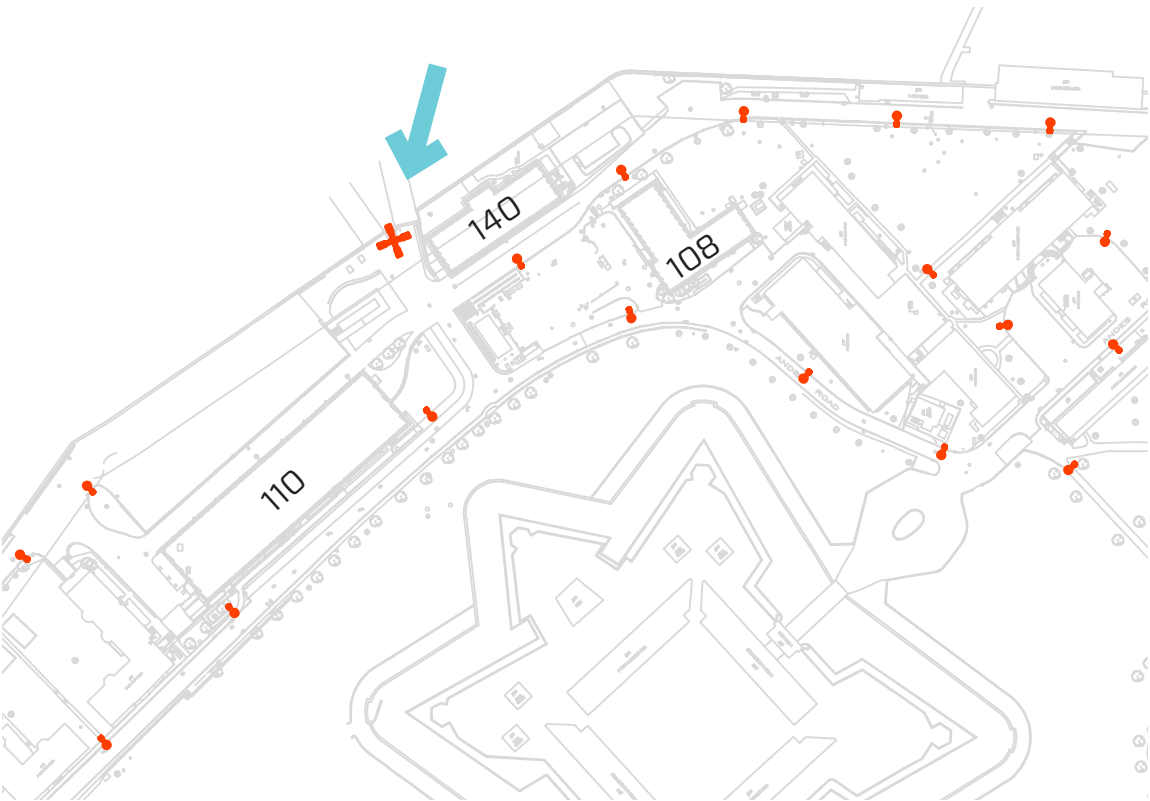


Left: Photograph of two streetlight lighting mock-ups on Craig Road South looking back towards Manhattan.
Right: Photograph of same mock-up looking south towards the scissor lift.

Proposed Lighting

Governors Island Historic District - Soissons Landing

The mast lights will replace existing upland lighting for each pier in the Historic District. Each mast light will be comprised of (4) moonlights mounted in pairs.

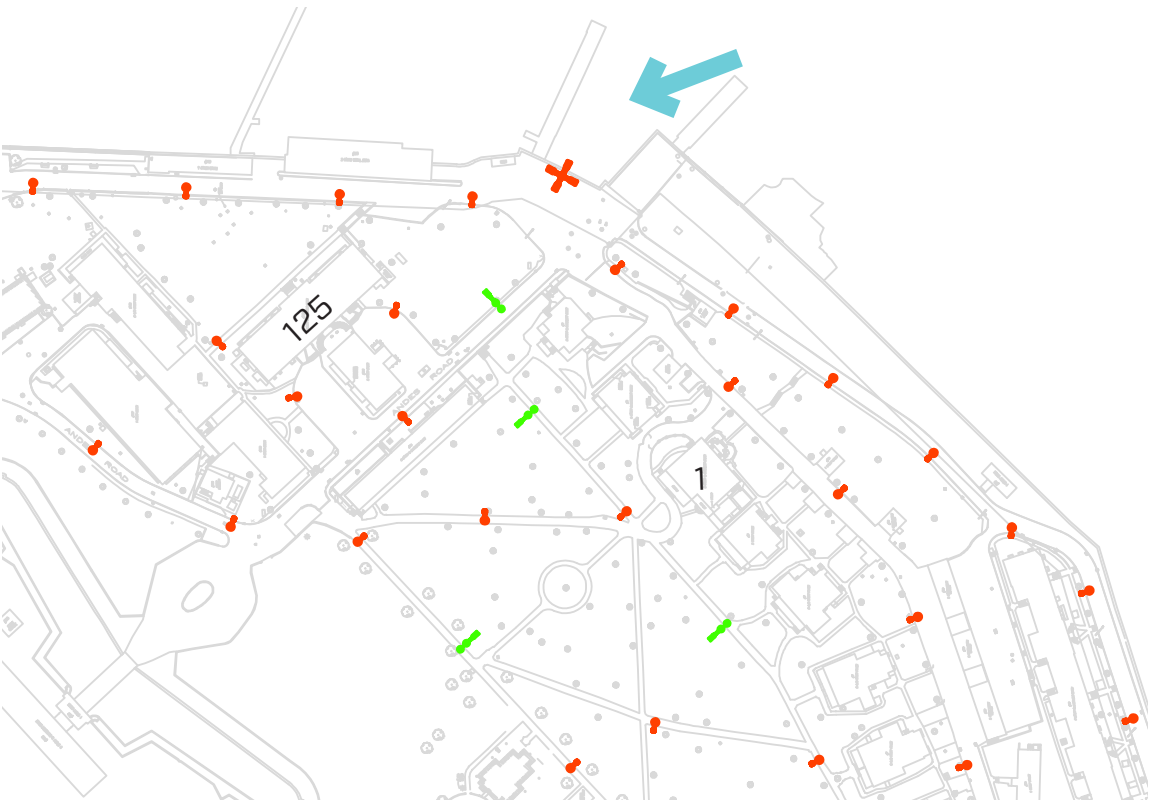


Left: Drawing showing mast light location at Soissons Landing.
Right: Photograph of Soissons Landing with proposed mast light, looking back towards the Island. Building 140 is seen at the left.

Proposed Lighting

Governors Island Historic District - Pier 101

The mast lights will replace existing upland lighting for each pier in the Historic District. Each mast light will be comprised of (4) moonlights mounted in pairs.



Left: Drawing showing mast light location at Pier 101.
Right: Photograph of Pier 101 with proposed mast light, looking back towards the Island.
Building 125 is seen at the top of the hill.

Proposed Lighting

Governors Island Historic District - Yankee Pier

The mast lights will replace existing upland lighting for each pier in the Historic District. Each mast light will be comprised of (4) moonlights mounted in pairs.

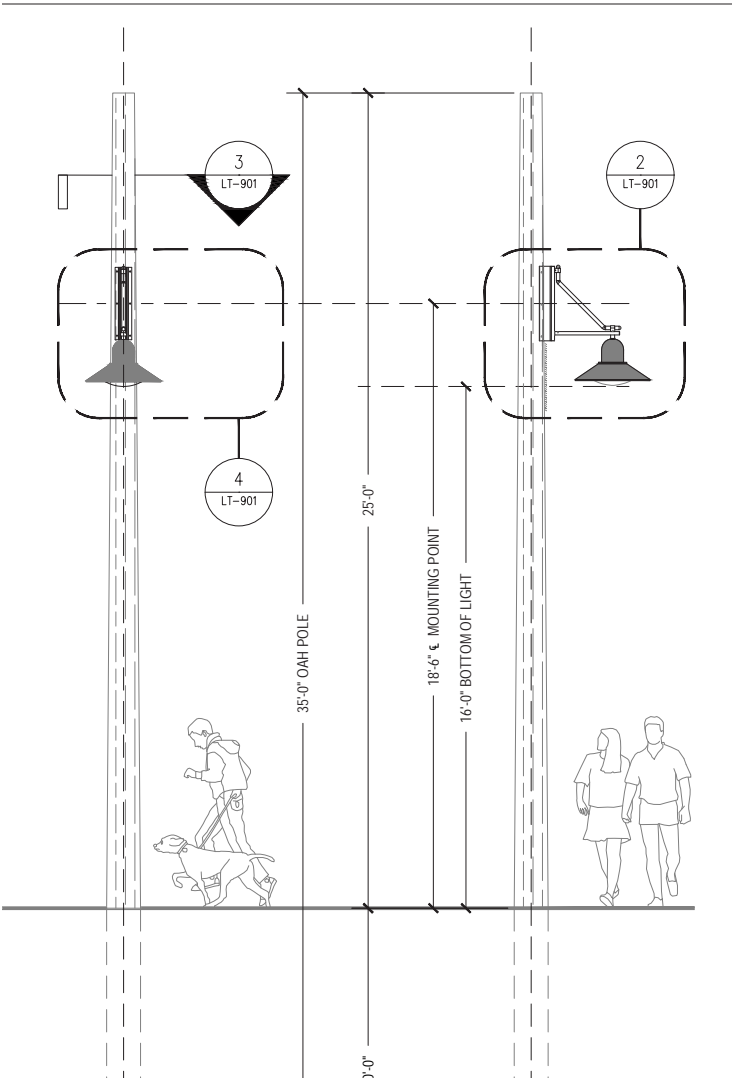
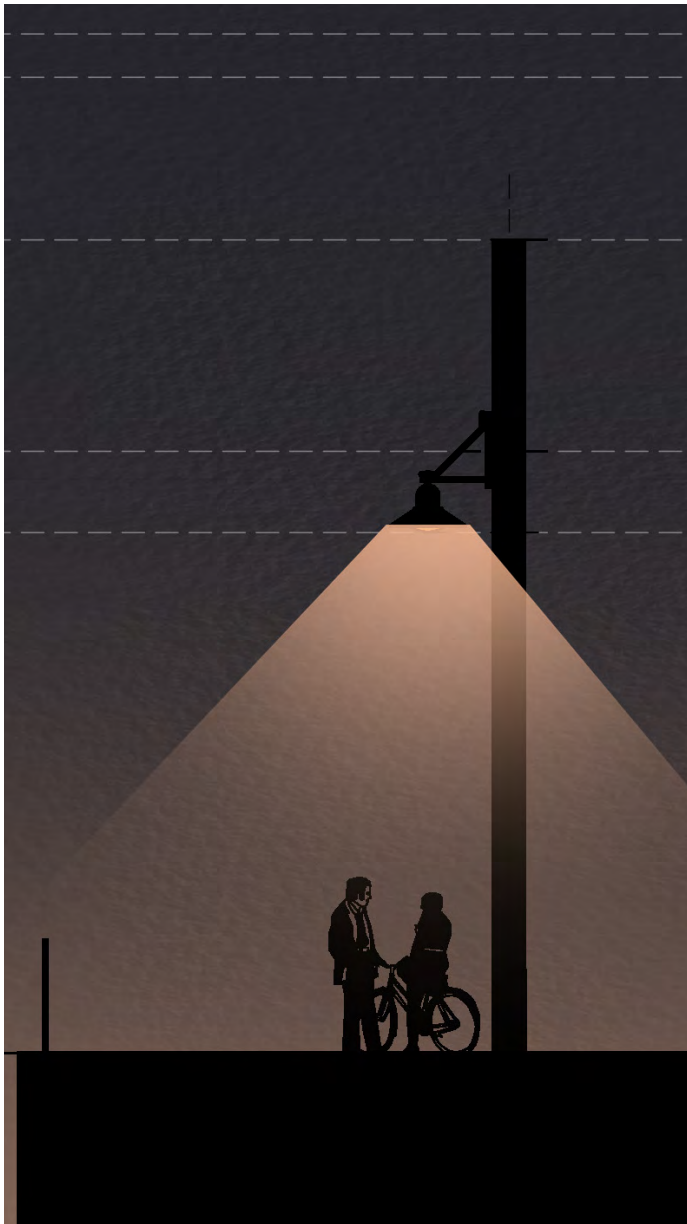


Left: Drawing showing mast light location at Yankee Pier.
Right: Photograph of Yankee Pier with proposed mast light, looking back towards the Island.
Building 315 is seen at the right.

Proposed Lighting

Governors Island Historic District

Proposed ‘streetlight’ fixtures.

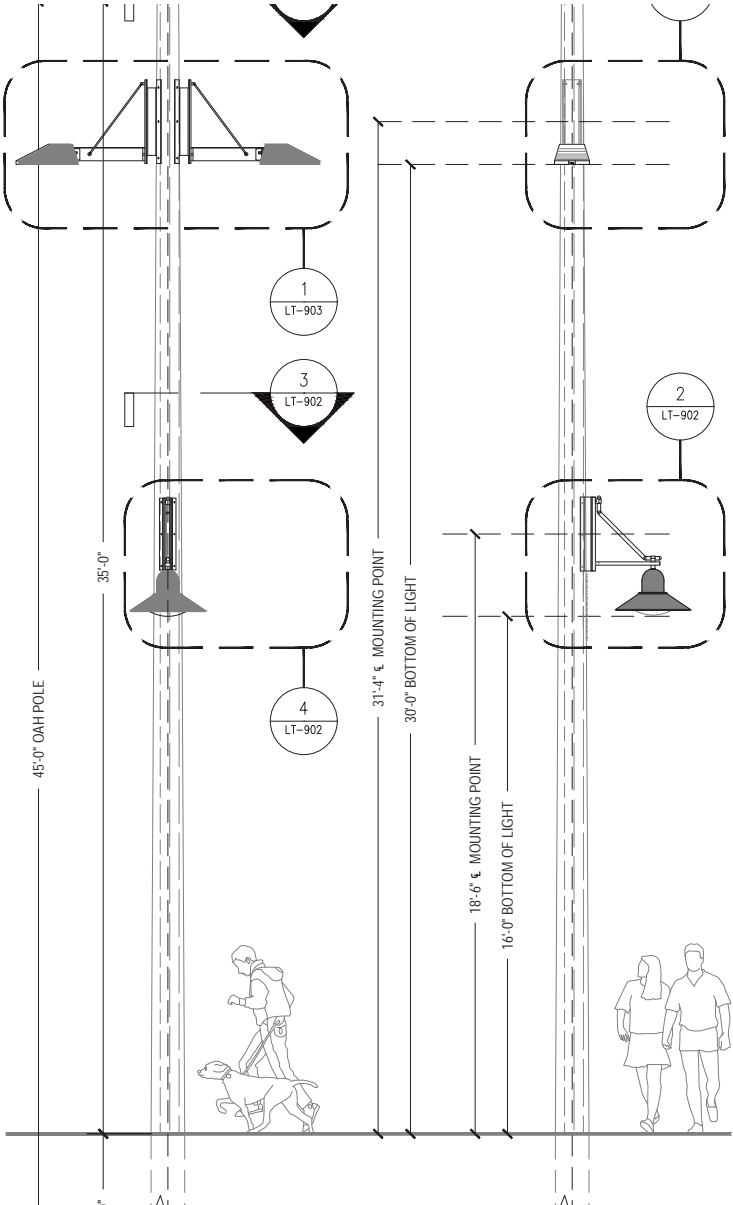
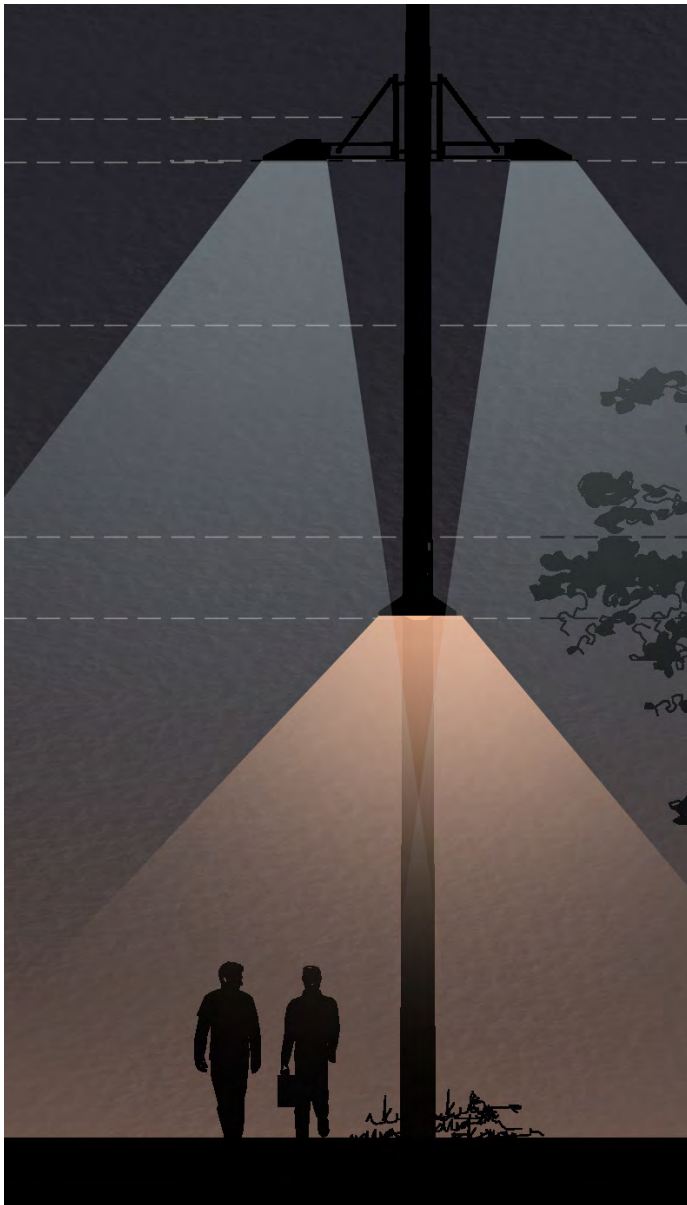


Streetlights will be mounted directly to Southern Yellow Pine wood posts.

Proposed Lighting

Governors Island Historic District

Proposed combination fixtures with a single moonlight and streetlight.

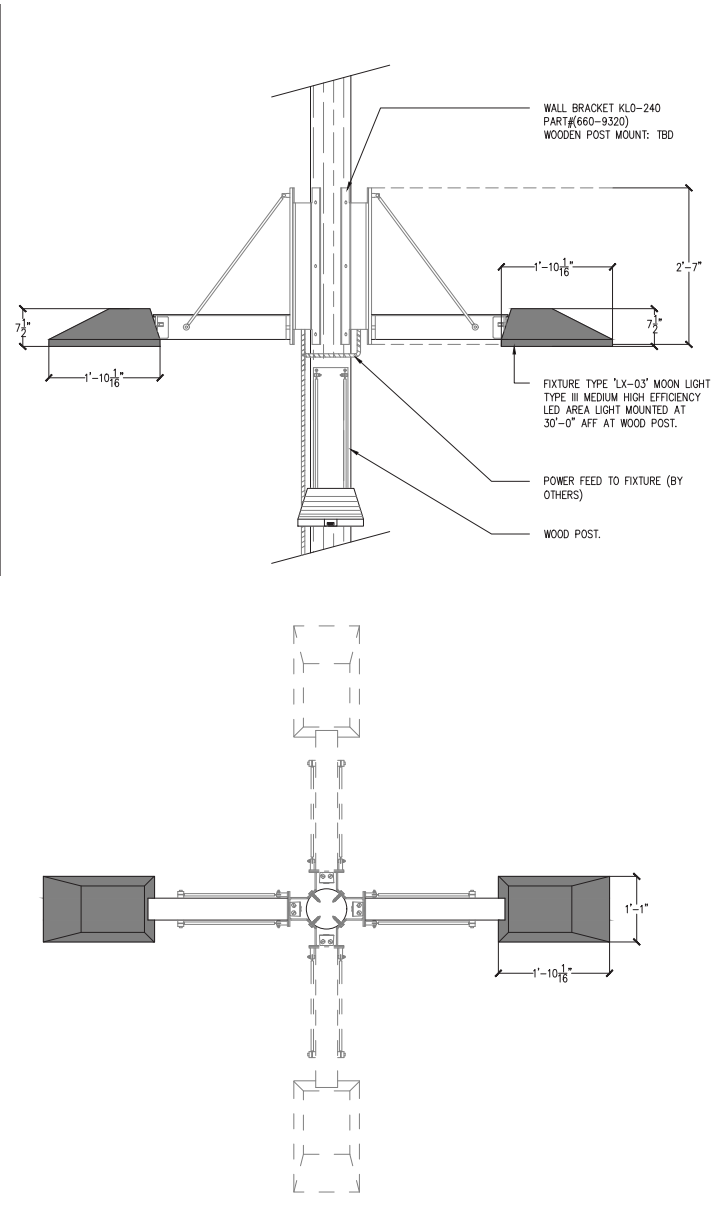
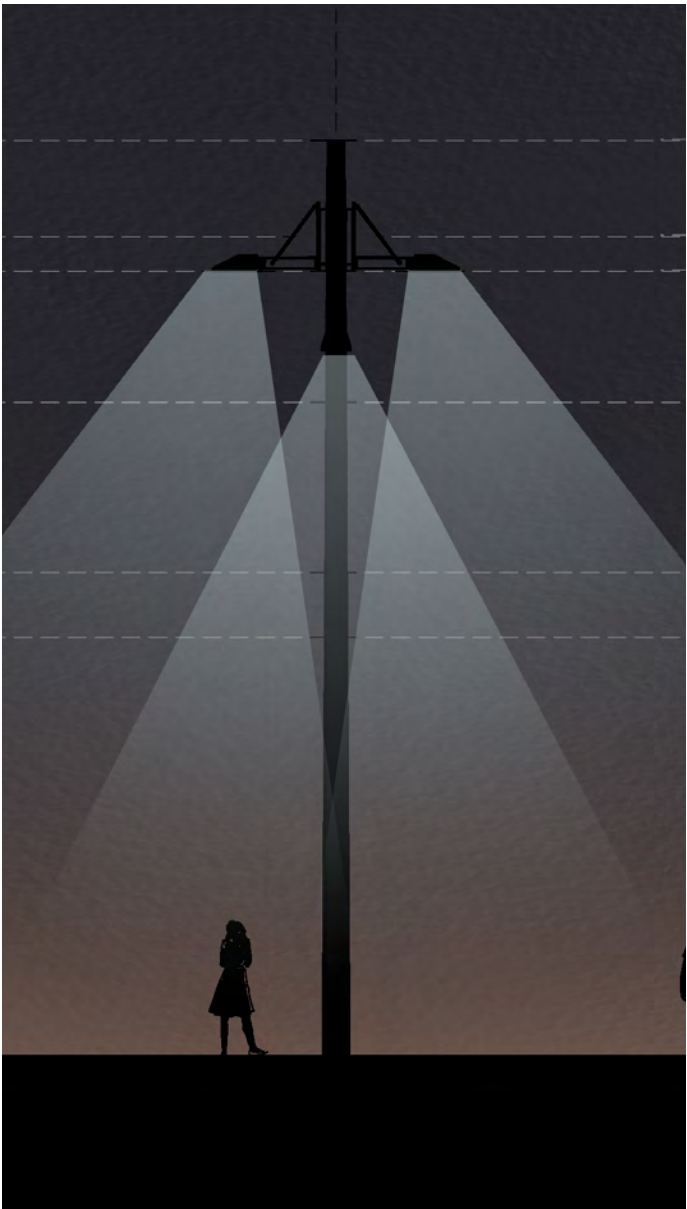


After reviewing the mock-up on site, the design was modified to include only (1) moonlight instead of (2).

Proposed Lighting

Governors Island Historic District

Proposed mast lights with (4) moonlights.



Proposed mast lights will be located at Soissons Landing, Pier 101 and Yankee Pier.

Proposed Lighting

Governors Island Historic District

Proposed materials are long-lasting, minimize maintenance needs and environmental impact.

Southern Yellow Pine

- Most popular species for utility poles/fences
- Readily available
- Long-lasting, will not need to be replaced
- Naturally dense and rot resistant requiring little to no treatment
- Load-bearing

Hooded LED lights

- Hooded downlights minimize light trespass and glare for migratory species
- Dark Sky Compliant & BUG rated (Backlight/Uplight/Glare)
- LED and not UV light
- Minimized total number of posts needed
- Photocell and timer light control times lights to be on only when needed
- LEDs are energy efficient, require minimal to no maintenance (rated for 70,000hrs), with parts that can be easily replaced extending the life of the fixture
- Exterior matte black coating is rust proof and does not require maintenance



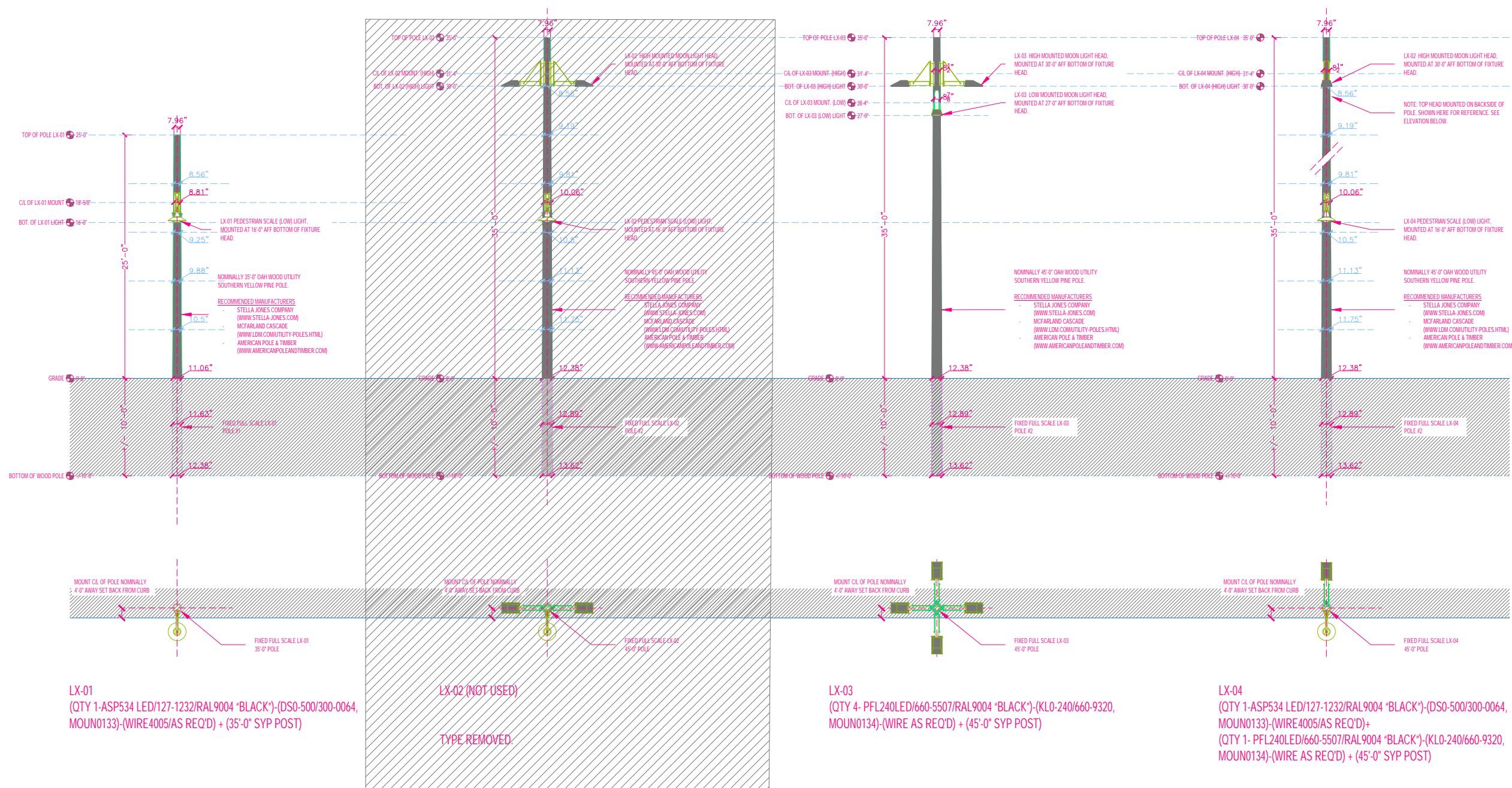
Southern Yellow Pine is the most common, durable utility pole material available.

Appendix

Governors Island Historic District Proposed Site Lighting

Proposed Lighting

Governors Island Historic District



Drawing of each proposed lighting type. The double moonlight combination post was eliminated after the mock-up review.

Existing Lighting

Governors Island Historic District

Existing lighting is comprised of several different lighting types installed from the US Army and Coast Guard periods. The vast majority of existing lights are non-functioning and the Historic District remains dark after sundown.



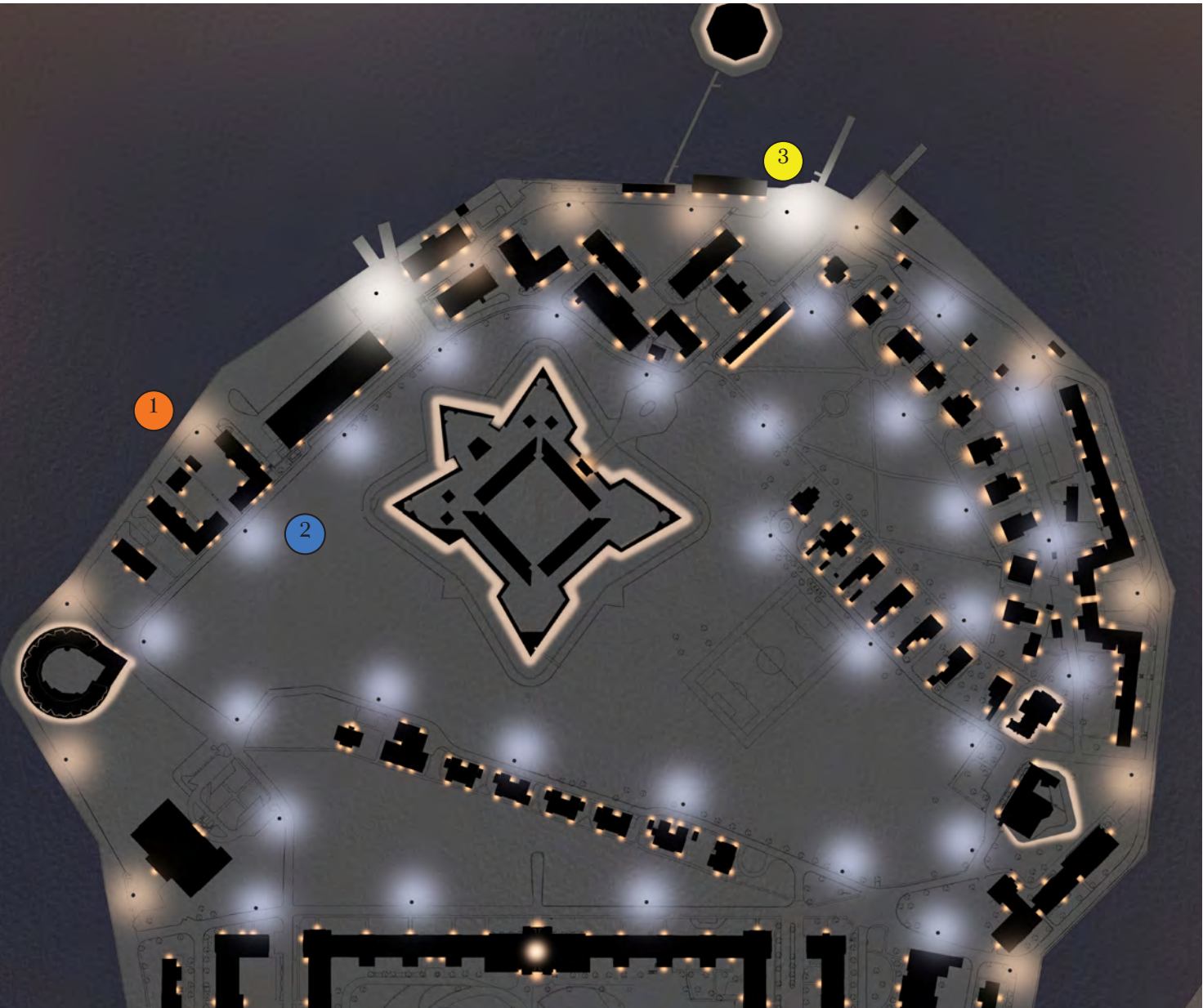
Right: Drawing of Governors Island Historic District showing existing lighting in blue.

Proposed Lighting

Governors Island Historic District - Concept Plan

The design intent of the proposed lighting accounts for future occupation of existing buildings and anticipated porch lights, sconces, etc. The proposed lighting remains conservative in lighting coverage anticipating additional lighting sources in the future.

- 1 Perimeter Pathways - Pedestrian-scale lighting, warmer color temperature at 3000k.
- 2 Inner Pathways - Higher mounted fixtures, moonlighting, neutral color temperature at 4000k.
- 3 Ferry Landing - Higher mounted fixtures, moonlighting, neutral color temperature at 4000k.



Rendered plan showing kit of parts lighting concept.

October 11th, 2022
Public Hearing

The current proposal is:

Preservation Department – Item 4, LPC-23-01837

Governors Island – Governors Island Historic District Borough of Manhattan

To Testify Please Join Zoom

Webinar ID: 853 8078 4078

Passcode: 813151

By Phone: 1 646-558-8656 US (New York)

877-853-5257 (Toll free) US

888 475 4499 (Toll free)

Note: If you want to testify on an item, join the Zoom webinar at the agenda's "Be Here by" time (about an hour in advance). When the Chair indicates it's time to testify, "raise your hand" via the Zoom app if you want to speak (*9 on the phone). Those who signed up in advance will be called first.