

The current proposal is:

Preservation Department – Item 7, LPC-23-02334

202 6th Avenue – Sullivan-Thompson Historic District Borough of Manhattan

To Testify Please Join Zoom

Webinar ID: 853 8078 4078

Passcode: 813151

By Phone: 1 646-558-8656 US (New York)

877-853-5257 (Toll free) US

888 475 4499 (Toll free)

Note: If you want to testify on an item, join the Zoom webinar at the agenda’s “Be Here by” time (about an hour in advance). When the Chair indicates it’s time to testify, “raise your hand” via the Zoom app if you want to speak (*9 on the phone). Those who signed up in advance will be called first.



LPC PACKAGE

PLANTA COCINA SOHO

202 AVENUE OF AMERICAS

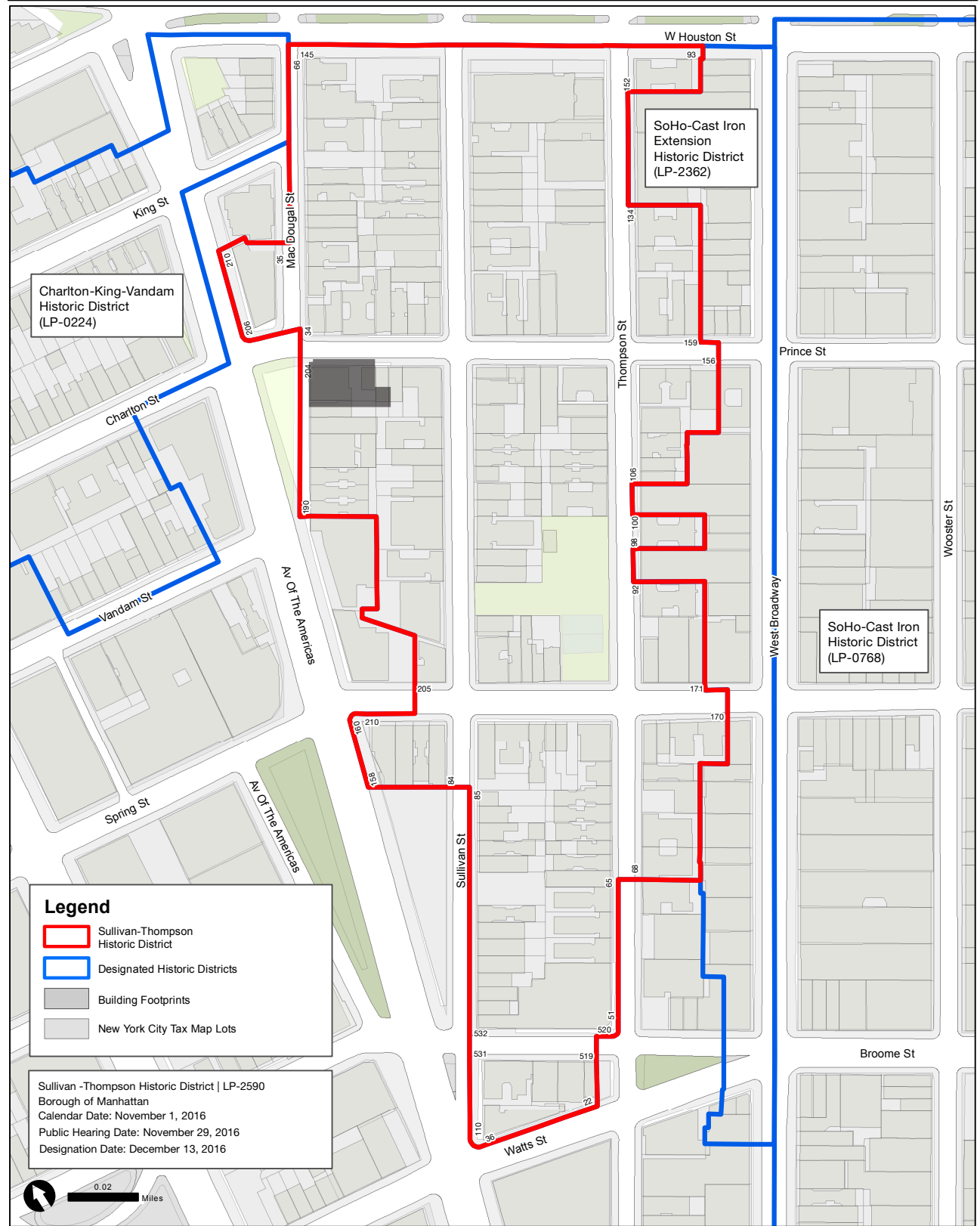
NEW YORK, NY 10013

OCTOBER 06, 2022

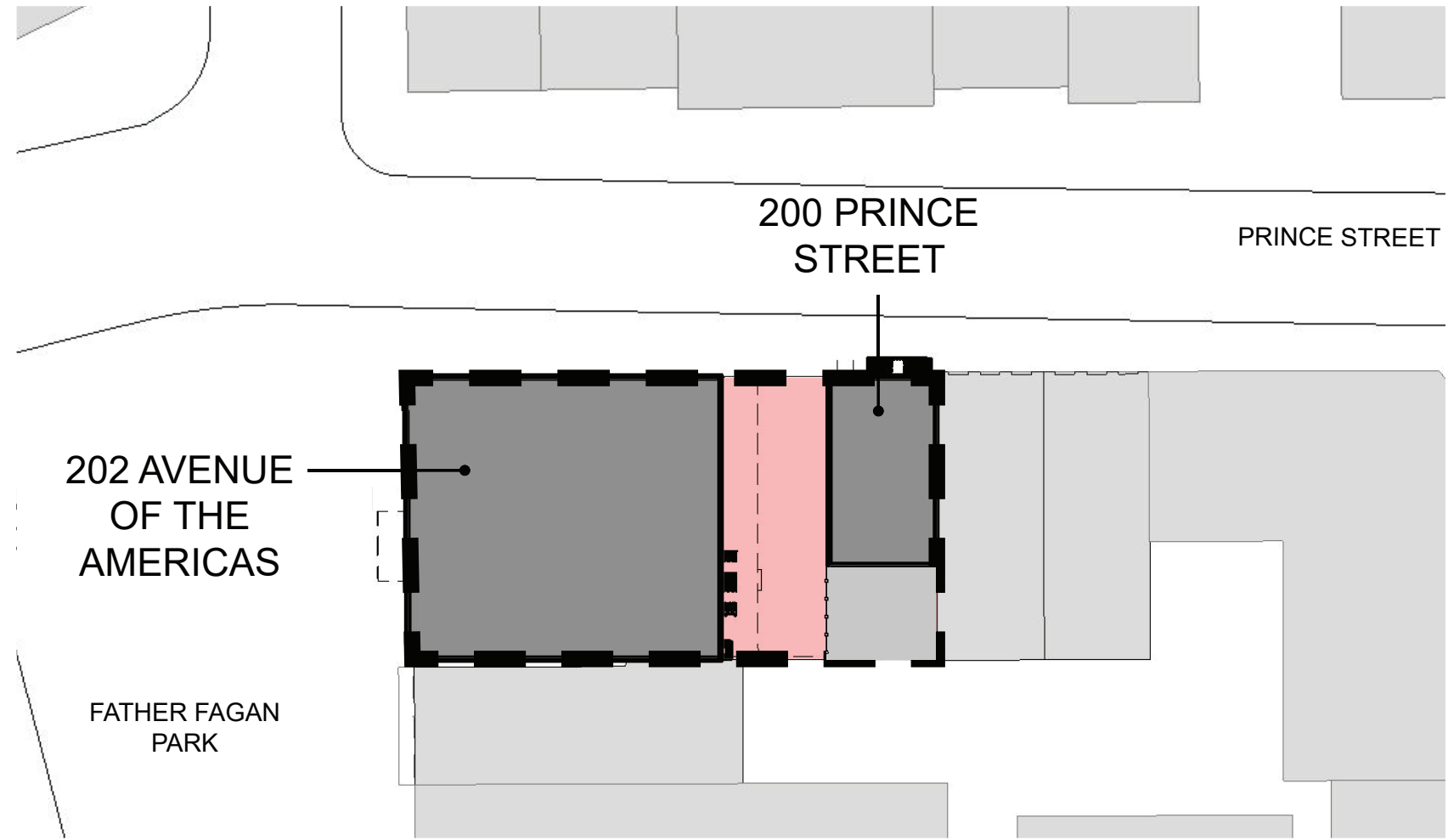


SULLIVAN - THOMPSON HISTORIC DISTRICT

Sullivan-Thompson Historic District | LP-2590



Graphic Source: MapPLUTO, Edition 16v1, Author: New York City Landmarks Preservation Commission, DHW, Date: 12.13.2016



SITE PLAN

FROM PREVIOUS SUBMISSION

AERIAL VIEW OF NEIGHBORHOOD



202 AVENUE OF AMERICAS



1940 & 1980 TAX LOT PHOTOS



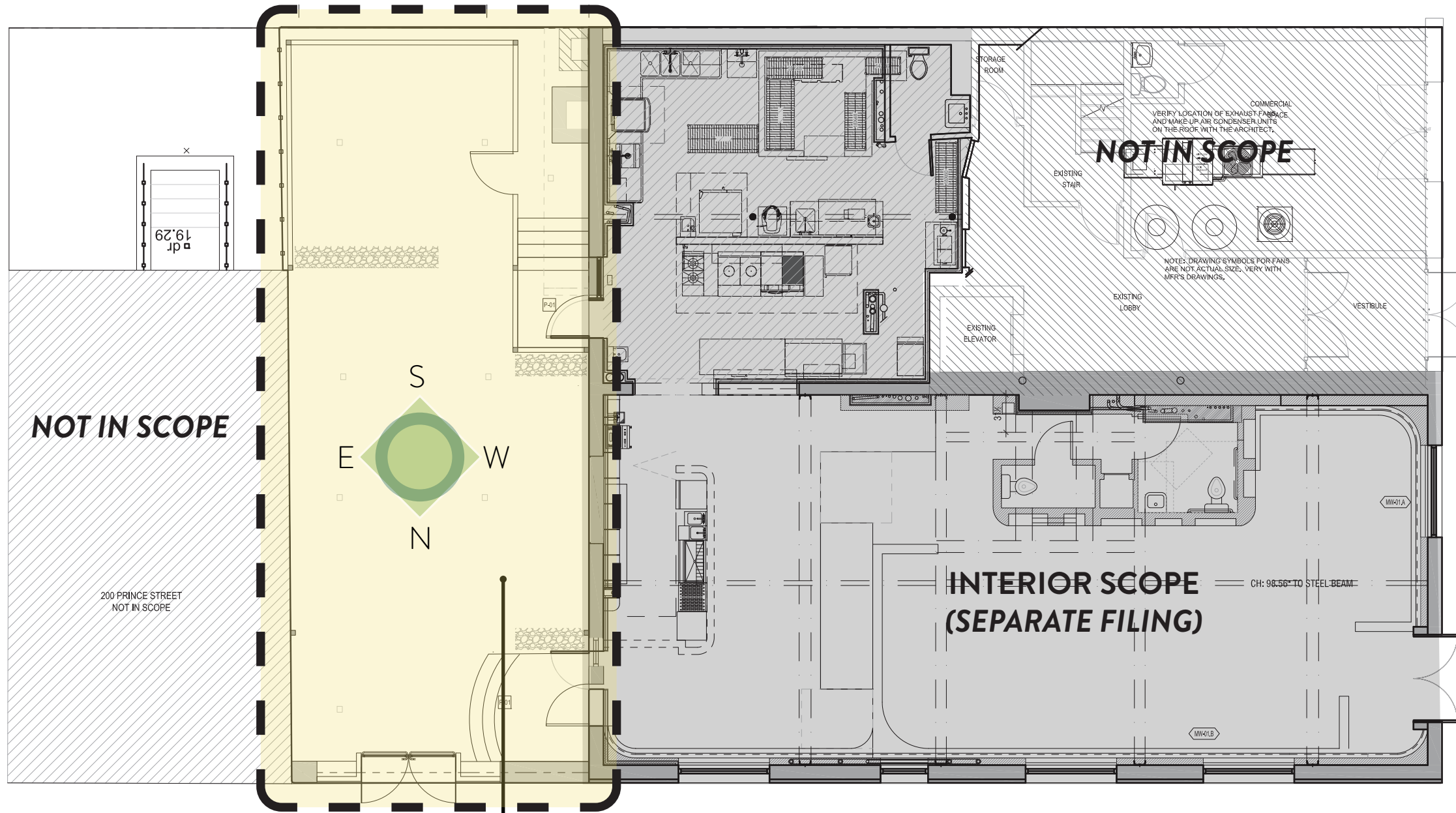
1940 & 1980
Views from 6th Ave



1940's
2-story structure



1980's
1-story brick
wall at side yard



NOT IN SCOPE

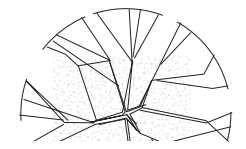
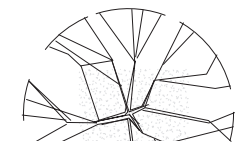
SCOPE OF EXTERIOR WORK

INTERIOR SCOPE
(SEPARATE FILING)

NOT IN SCOPE

FATHER
FAGAN PARK

PRINCE STREET



PRINCE ST. ELEVATION COMPARISONS



EXISTING NORTH ELEVATION





PREVIOUSLY LPC - APPROVED ELEVATION - 2019



REVISED ELEVATION - STREET PERSPECTIVE



PROPOSED ELEVATION - COMPARISON



OLD SIDE YARD FACADE WITH 1-STORY BRICK WALL

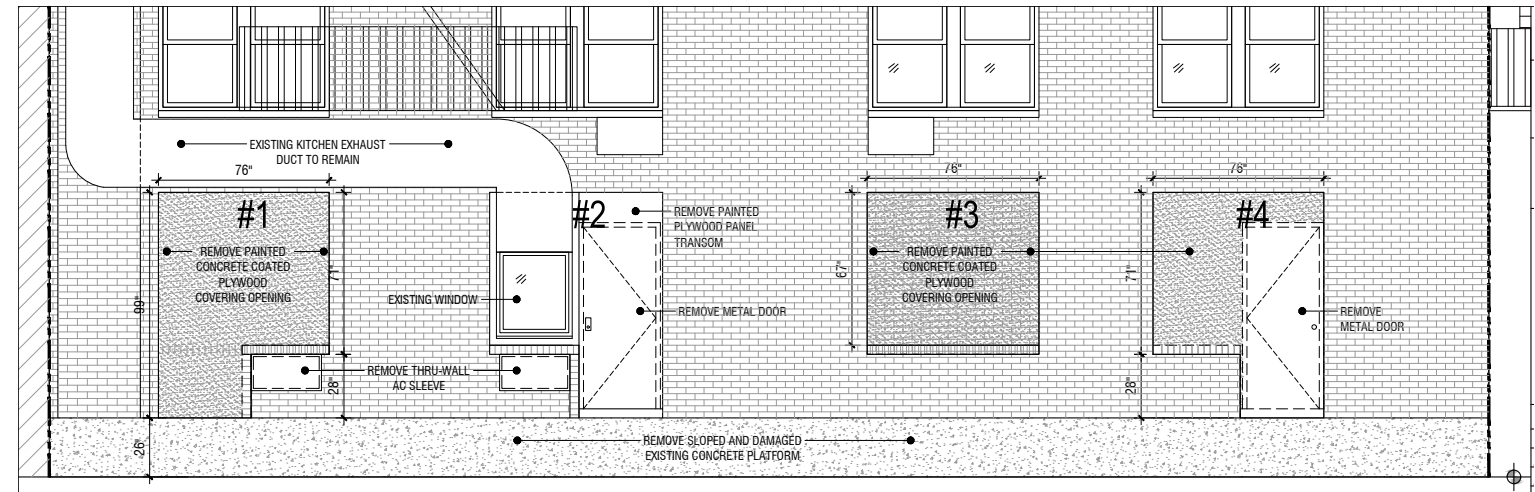


EXISTING FACADE WITH STONE CAP

PATIO ELEVATIONS



EXISTING LOOKING WEST



EXISTING WEST ELEVATION

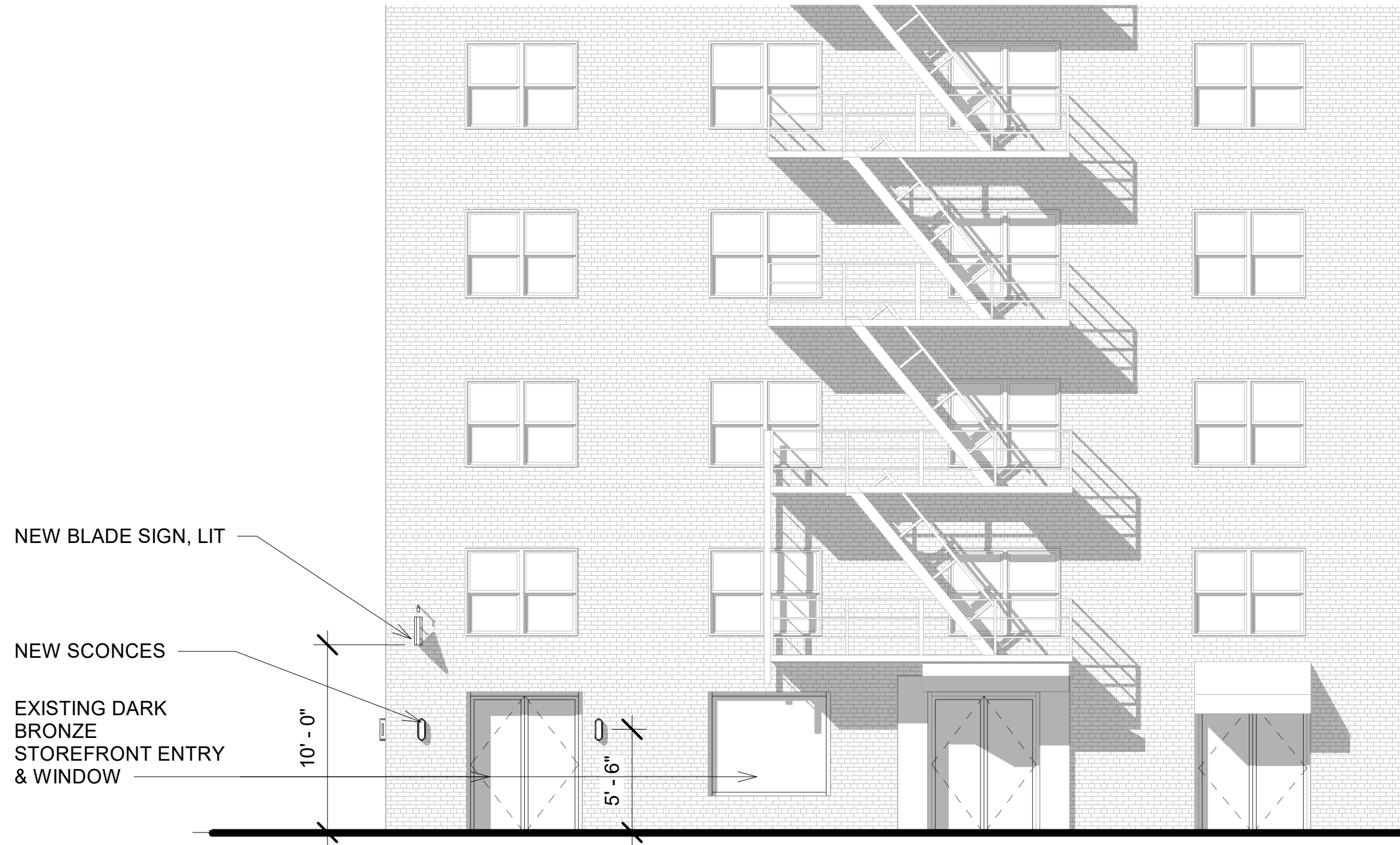


EXISTING LOOKING WEST



PROPOSED WEST ELEVATION

6TH AVENUE ELEVATION



ENLARGED ELEVATION - 2022



EXISTING CONDITION

REVISED PRINCE ST. ELEVATION



PROPOSED ELEVATION - 2022

PROPOSED WALL SCONCE LTX-8 - SPECIFICATION



PROPOSED WALL SCONCE

**LTX-8
GEORGE KOVACS**

FLOATING OVAL OUTDOOR
LED WALL SCONCE
FINIISH: PEBBLE BRONZE
QUANTITY: 9



Job Name:
Job Type:
Quantity:

Family:	Floating Oval
Product Category:	Wall Sconce
Item#:	P1281-286-L
Finish:	Pebble Bronze
Certification:	3195125

Lamping

Light Type:	Z08,Led
Socket Type:	Y09,Led
Max Wattage:	12
LED Included:	Y
Dimmable:	Y
CRI:	92
Color Temp:	3000
Initial Lumens:	1006.000
Delivered Lumens:	433.000
Rated Life Hours:	30000
Photo Cell Included:	N
Ballast:	N/A

Shipping

Carton Weight:	4.36
Carton Width:	6.38
Carton Height:	6.38
Carton Length:	12.5
Carton Cubic Feet:	0.294
Master Pack:	4
Master Pack Weight:	18.81
Master Pack Width:	13
Master Pack Height:	13.5
Master Pack Length:	13.5
Master Cubic Feet:	1.371
*Multi-Pack:	N/A
Small Package Shippable:	Y

Measurements

Width:	5
Height:	11
Length:	N/A
Min Overall Height:	N/A
Max Overall Height:	N/A
Height Adjustable:	N
Extension:	3
Net Weight:	3.88
Back Plate/Canopy Width:	4.5
Back Plate/Canopy Height:	10.5
Canopy Length:	4.5
Center to Top of Fixture:	5.5
Center to Bottom of Fixture:	5.5
Slope:	N
Chain Length:	N/A
Wire Length:	7"

Shade

*Shade Description:	Etched Opal Glass
*Shade Material:	Glass
*Shade Quantity:	1
*Shade Number:	PG1281
*Shade Width:	3.5
*Shade Height:	1.75
*Shade Length:	9.5

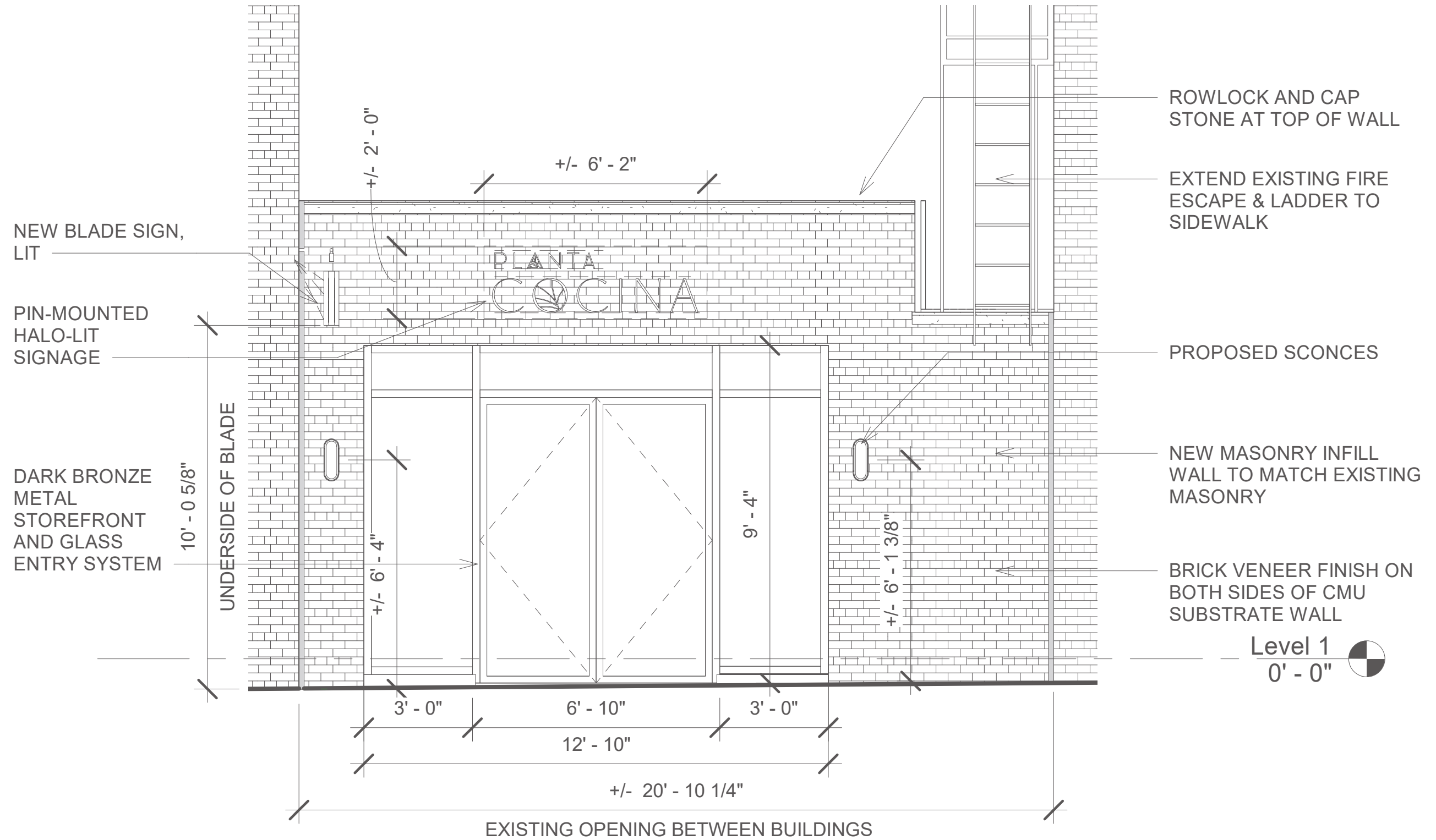
Miscellaneous

Safety Cable Included:	N
------------------------	---

**For additional information, please contact Customer Care: 1-800-221-7977.*

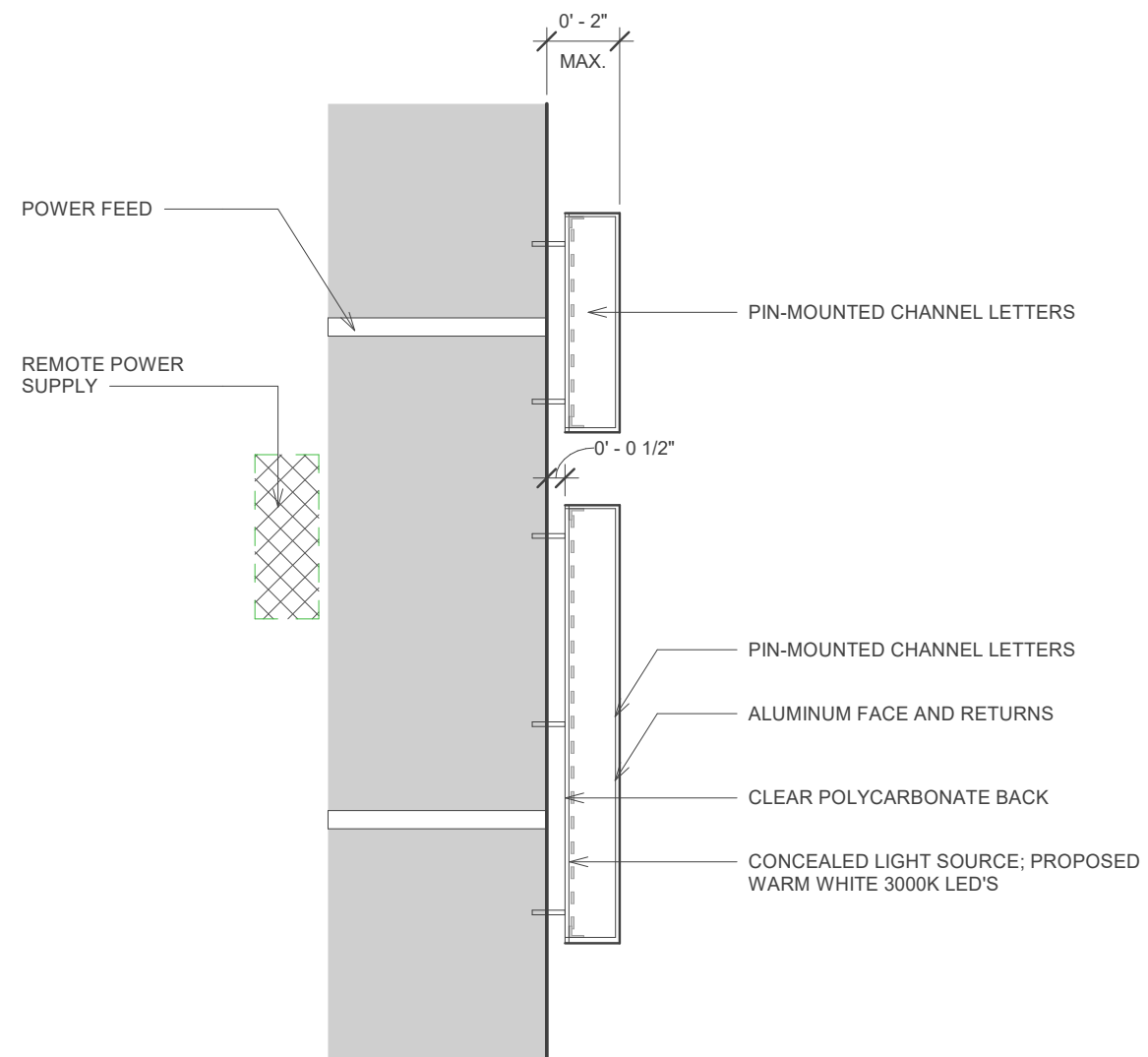
Product depicted on this spec sheet is protected by United States Federal and/or State laws including US Patent, Trademark and/or Copyright and unfair competition laws. Unauthorized reproduction or use carries severe legal penalties.

REVISED PRINCE ST. ELEVATION

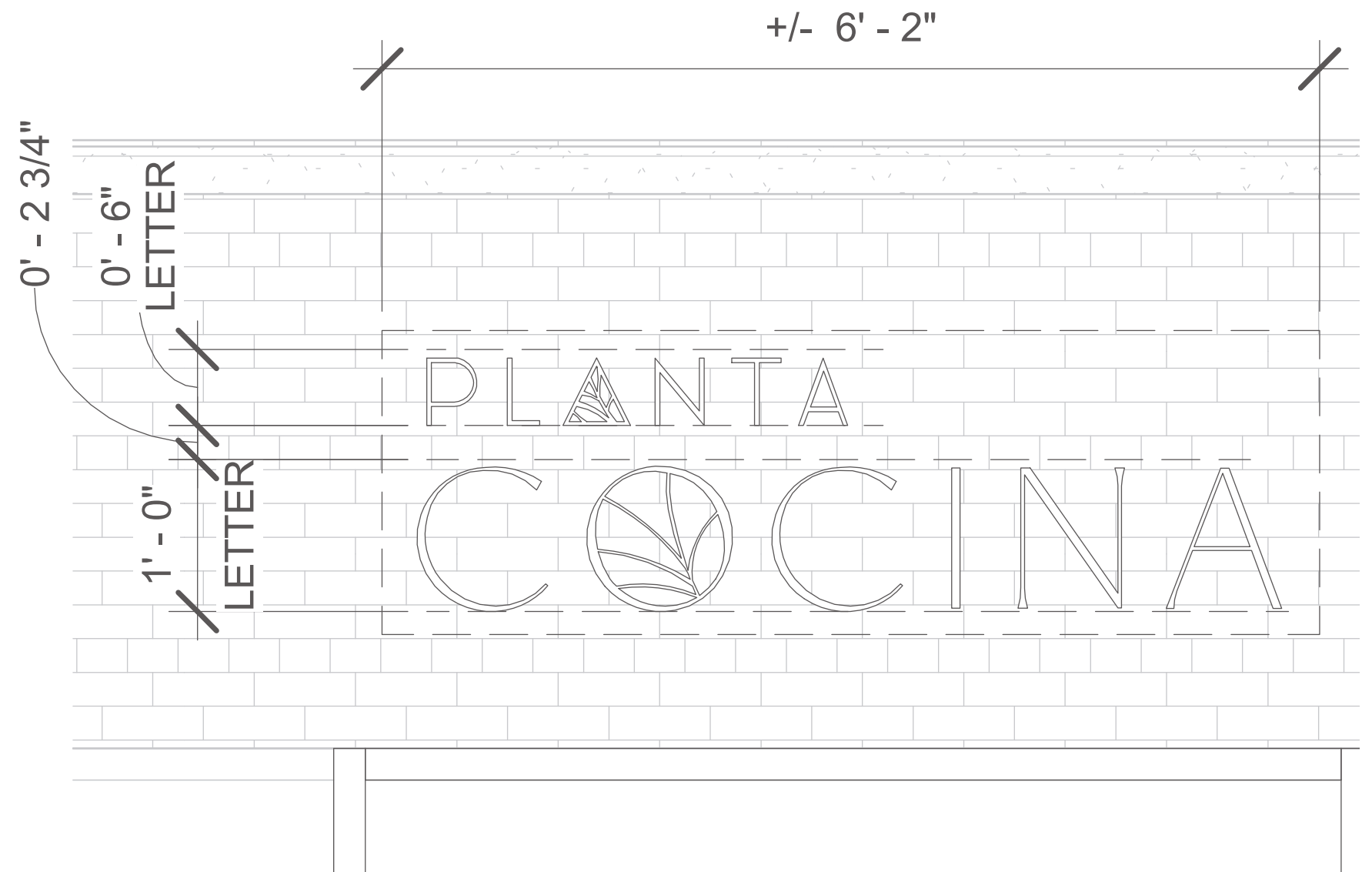


ENLARGED ELEVATION - 2022 REVISED

PIN-MOUNTED SIGNAGE DETAILS

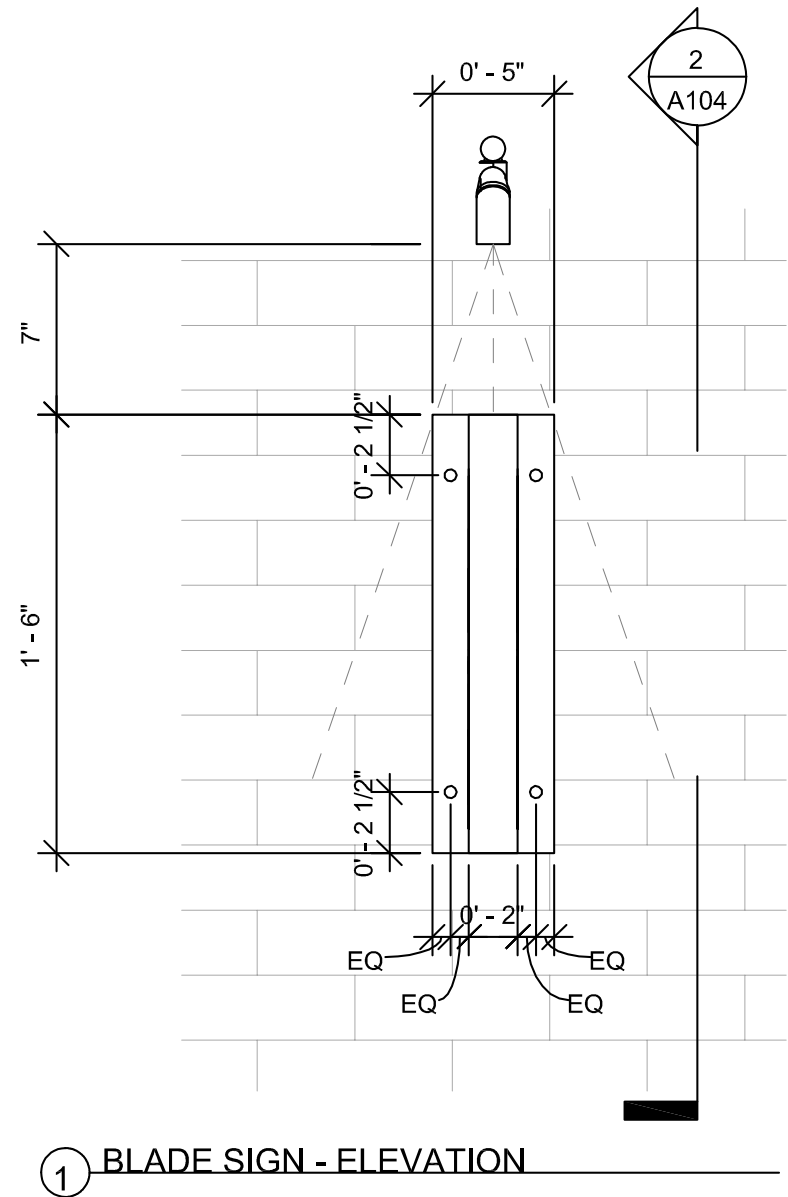


SIGNAGE SECTION DETAIL

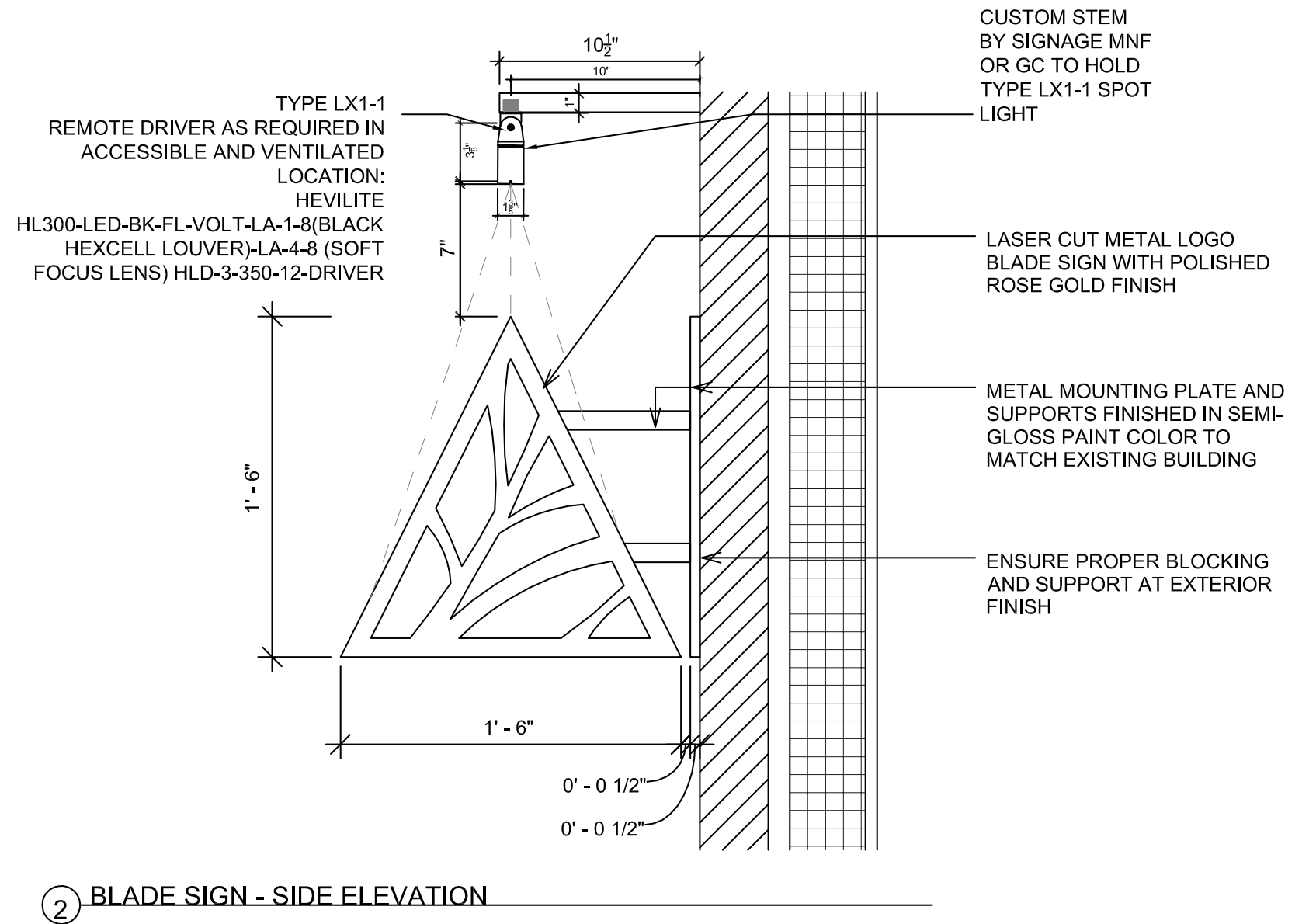


ENLARGED SIGNAGE ELEVATION

BRACKET SIGNAGE DETAILS



FRONT ELEVATION



SIDE ELEVATION

REVISED ELEVATION - AERIAL



200 PRINCE STREET

202 6TH AVENUE

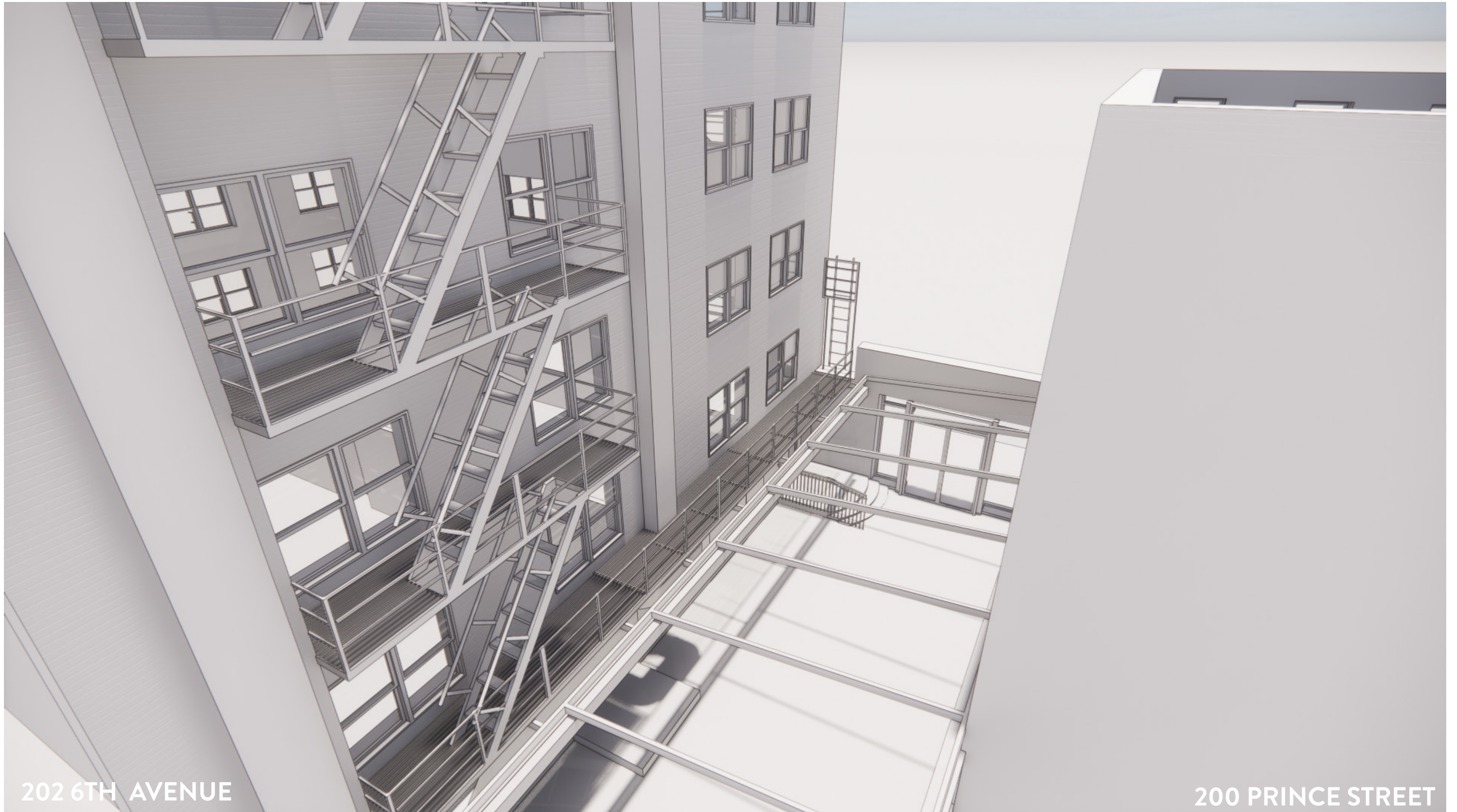
REVISED ELEVATION - AERIAL VIEW



200 PRINCE STREET

202 6TH AVENUE

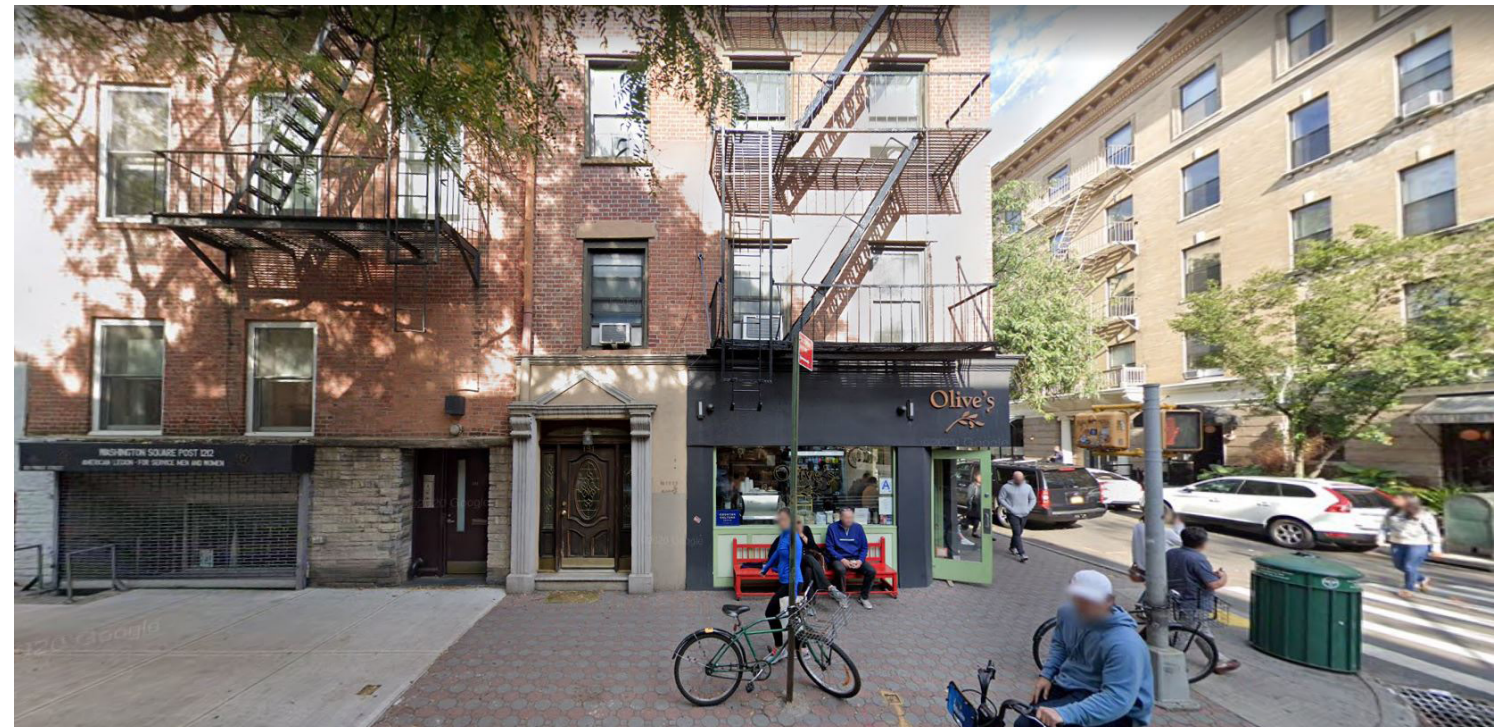
REVISED ELEVATION - AERIAL VIEW



202 6TH AVENUE

200 PRINCE STREET

NEIGHBORHOOD CONTEXT - NORTH PRINCE STREET



NEIGHBORHOOD CONTEXT - SOUTH PRINCE STREET



The current proposal is:

Preservation Department – Item 7, LPC-23-02334

202 6th Avenue – Sullivan-Thompson Historic District Borough of Manhattan

To Testify Please Join Zoom

Webinar ID: 853 8078 4078

Passcode: 813151

By Phone: 1 646-558-8656 US (New York)

877-853-5257 (Toll free) US

888 475 4499 (Toll free)

Note: If you want to testify on an item, join the Zoom webinar at the agenda’s “Be Here by” time (about an hour in advance). When the Chair indicates it’s time to testify, “raise your hand” via the Zoom app if you want to speak (*9 on the phone). Those who signed up in advance will be called first.