

The current proposal is:

Preservation Department – Item 5, LPC-22-11658

**230 Park Avenue – New York Central Building/now Helmsley
Building – Individual and Interior Landmark
Borough of Manhattan**

To Testify Please Join Zoom

Webinar ID: 868 9794 8074

Passcode: 501977

By Phone: 1 646-558-8656 US (New York)

877-853-5257 (Toll free) US

888 475 4499 (Toll free)

Note: If you want to testify on an item, join the Zoom webinar at the agenda’s “Be Here by” time (about an hour in advance). When the Chair indicates it’s time to testify, “raise your hand” via the Zoom app if you want to speak (*9 on the phone). Those who signed up in advance will be called first.

230 PARK AVENUE STOREFRONT MASTERPLAN



M^{de}AS



HIGGINS QUASEBARTH & PARTNERS, LLC
CONSULTANTS IN THE PRESERVATION AND REHABILITATION OF HISTORIC PROPERTIES

19 JULY 2022

VANDERBILT
CORRIDOR

DESIGNATED
PUBLIC PLACE
BETWEEN 42ND
& 43RD STREET



230 PARK
AVENUE



BUILDING LOCATION HISTORIC DRAWINGS

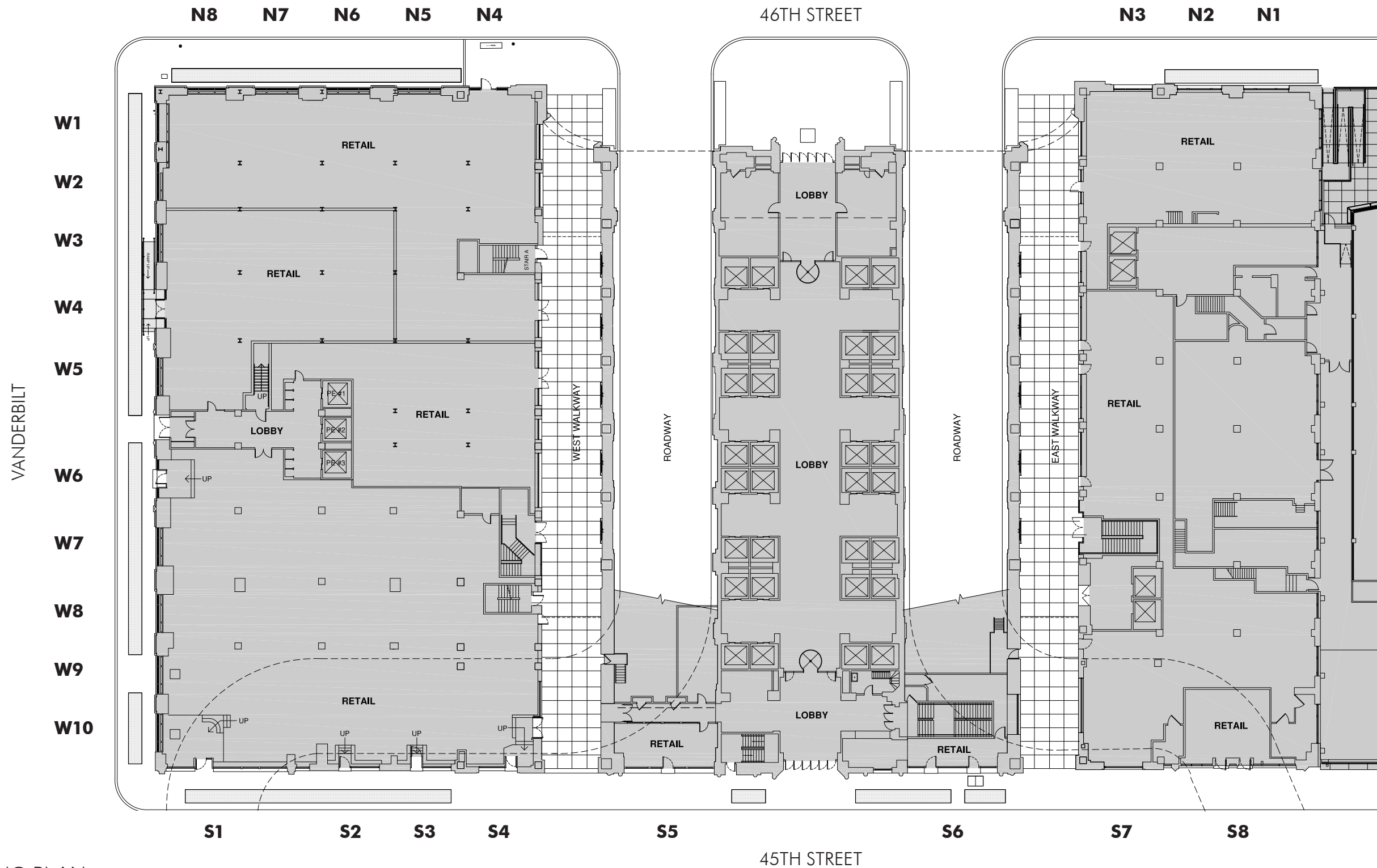


1928



1928

HISTORIC IMAGES



EXISTING PLAN



46TH STREET ELEVATION



46TH STREET ELEVATION



VANDERBILT AVENUE ELEVATION



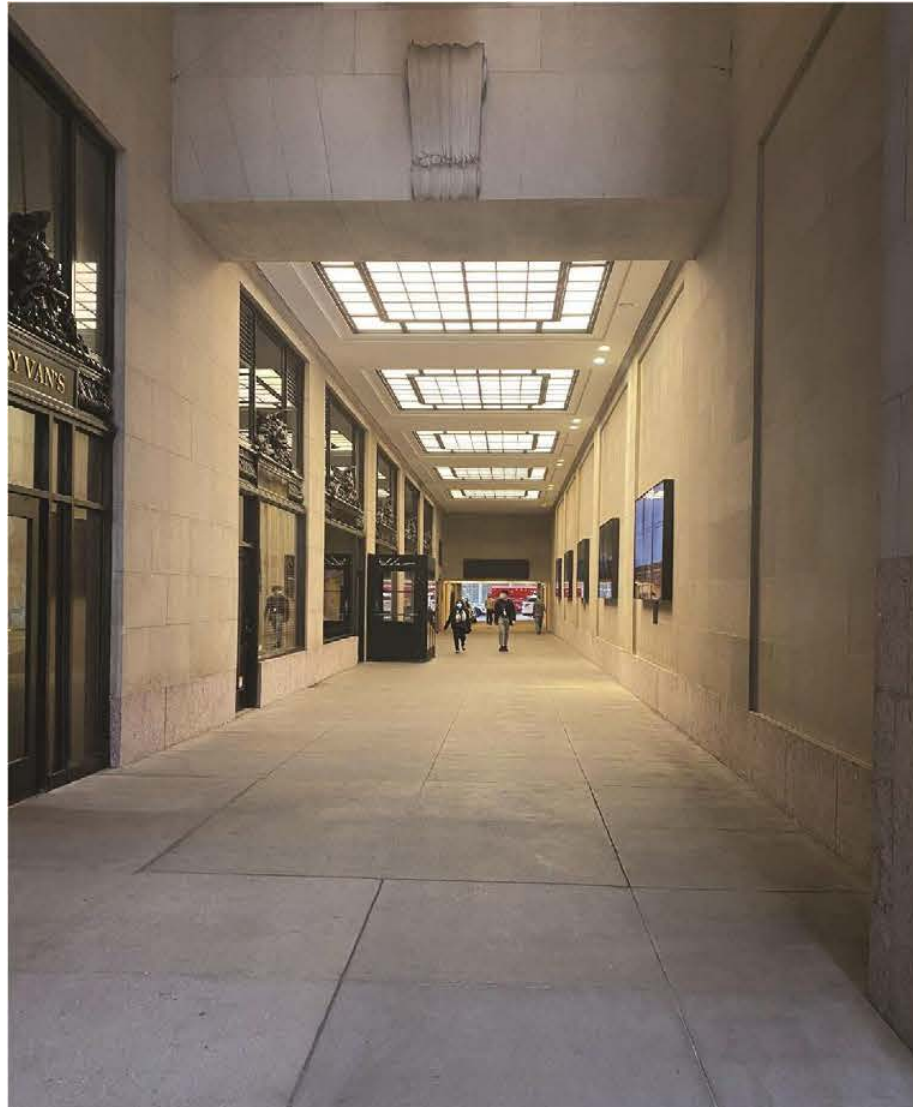
VANDERBILT AVENUE ELEVATION



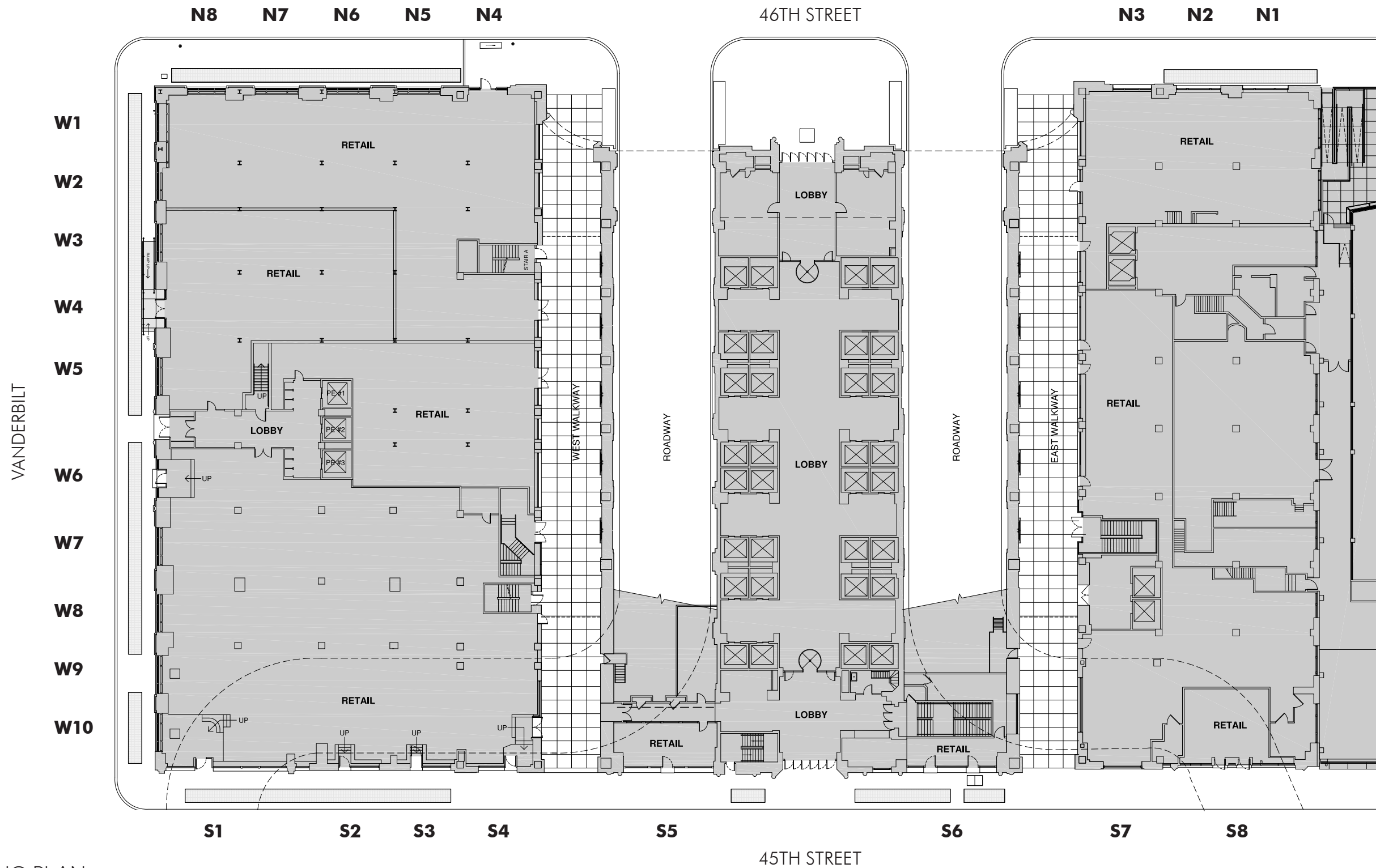
45TH STREET ELEVATION



45TH STREET ELEVATION



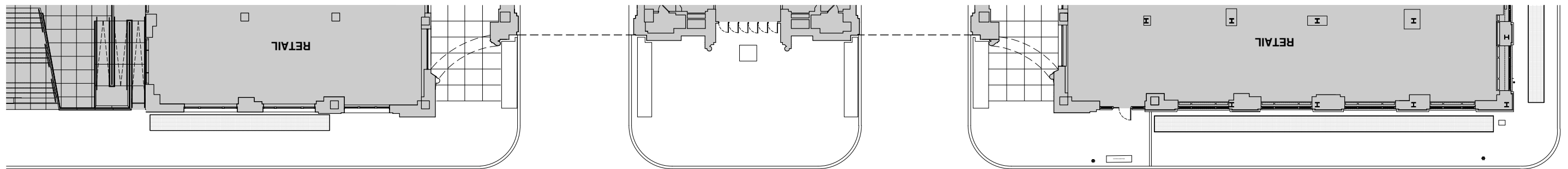
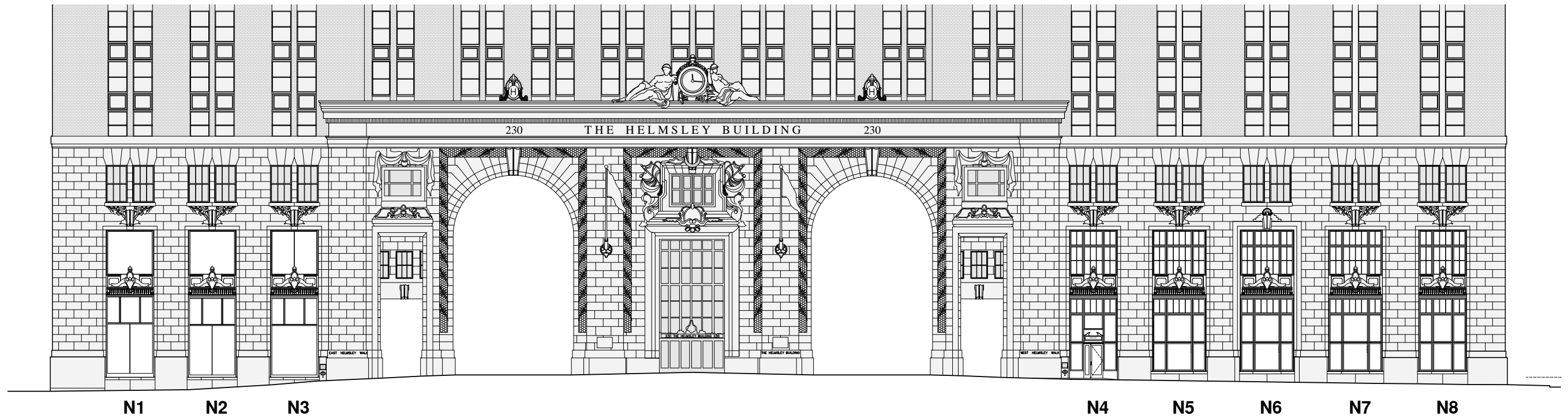
PEDESTRIAN WALKWAYS



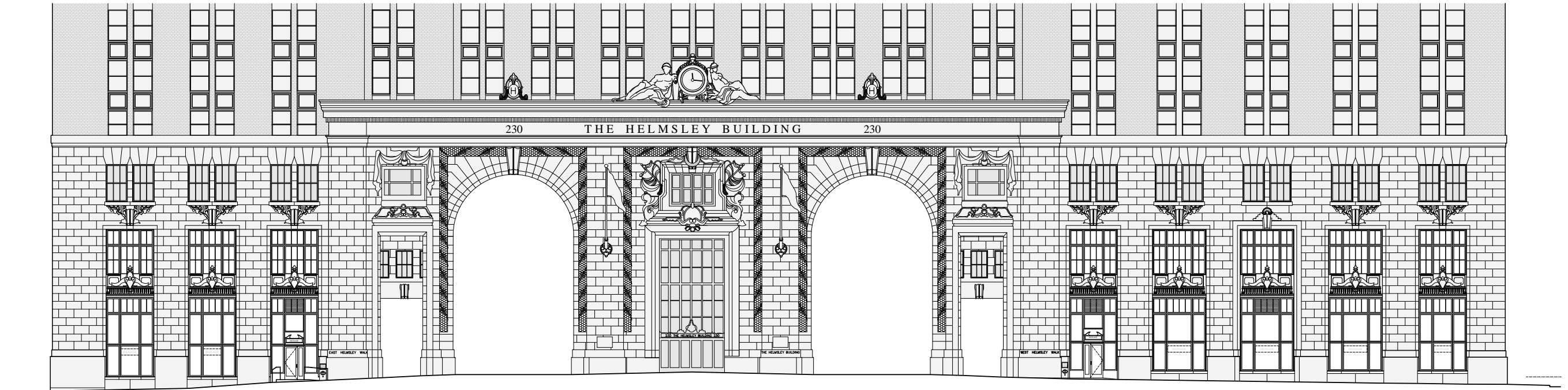
EXISTING PLAN



PROPOSED PLAN



46TH STREET
EXISTING PLAN + ELEVATION



N1
(WINDOW
TYPE 1)

N2
(WINDOW
TYPE 1)

N3
(WINDOW TYPE 1
OR ENTRY TYPE 1)

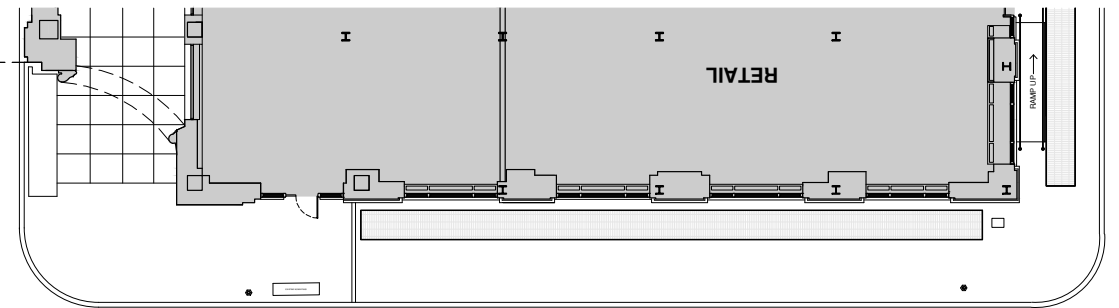
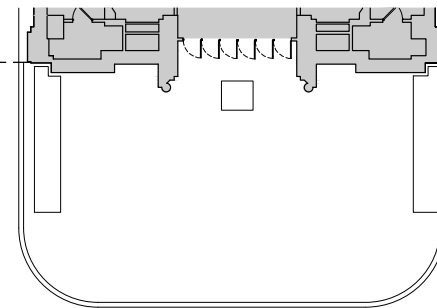
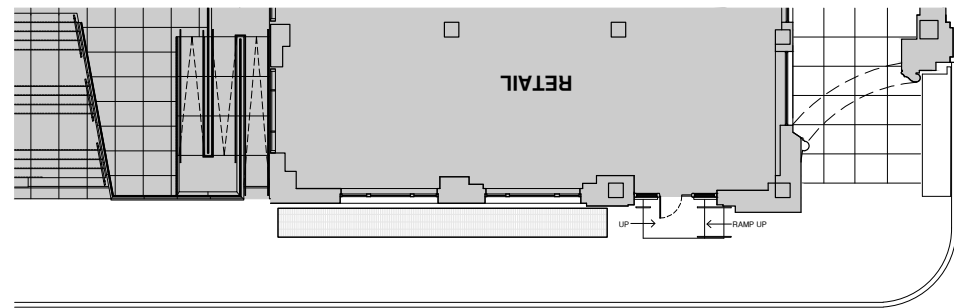
N4
(WINDOW TYPE 1
OR ENTRY TYPE 1)

N5
(WINDOW
TYPE 1)

N6
(WINDOW
TYPE 1)

N7
(WINDOW
TYPE 1)

N8
(WINDOW
TYPE 1)



46TH STREET
PROPOSED PLAN + ELEVATION

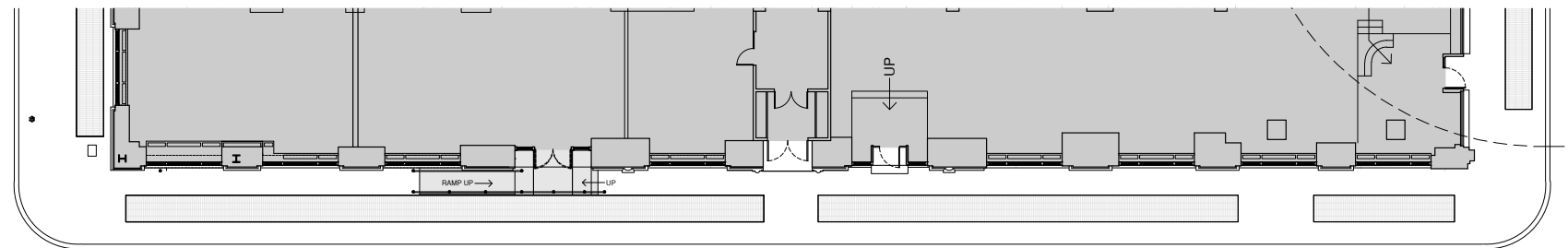


EXISTING ELEVATION



PROPOSED ELEVATION

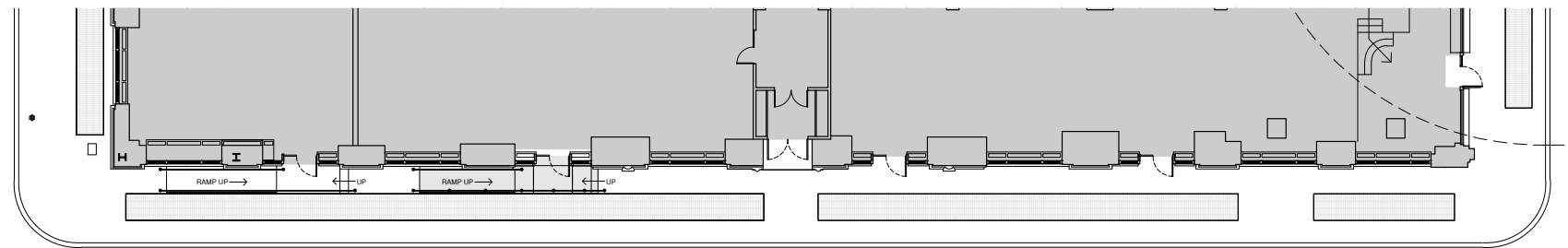
46TH STREET EXISTING + PROPOSED ELEVATIONS



VANDERBILT AVENUE
EXISTING PLAN + ELEVATION



W1 (WINDOW TYPE 2)
W2 (WINDOW TYPE 2 OR ENTRY TYPE 2)
W3 (WINDOW TYPE 2)
W4 (WINDOW TYPE 2 OR ENTRY TYPE 2)
W5 (WINDOW TYPE 2)
W6 (WINDOW TYPE 2 OR ENTRY TYPE 3)
W7 (WINDOW TYPE 2 OR ENTRY TYPE 3)
W8 (WINDOW TYPE 2 OR ENTRY TYPE 3)
W9 (WINDOW TYPE 2)
W10 (WINDOW TYPE 2)



VANDERBILT AVENUE
 PROPOSED PLAN + ELEVATION

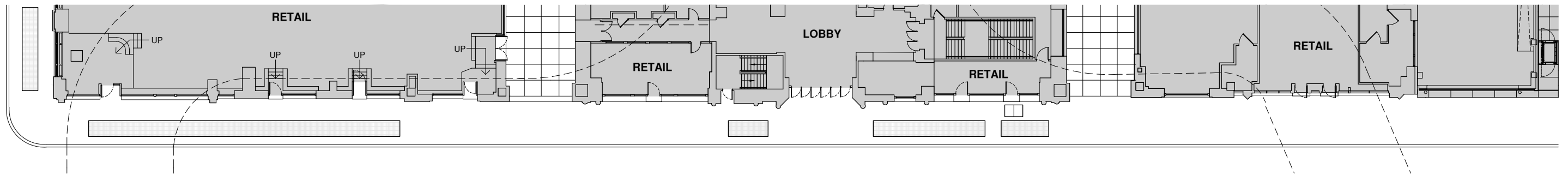
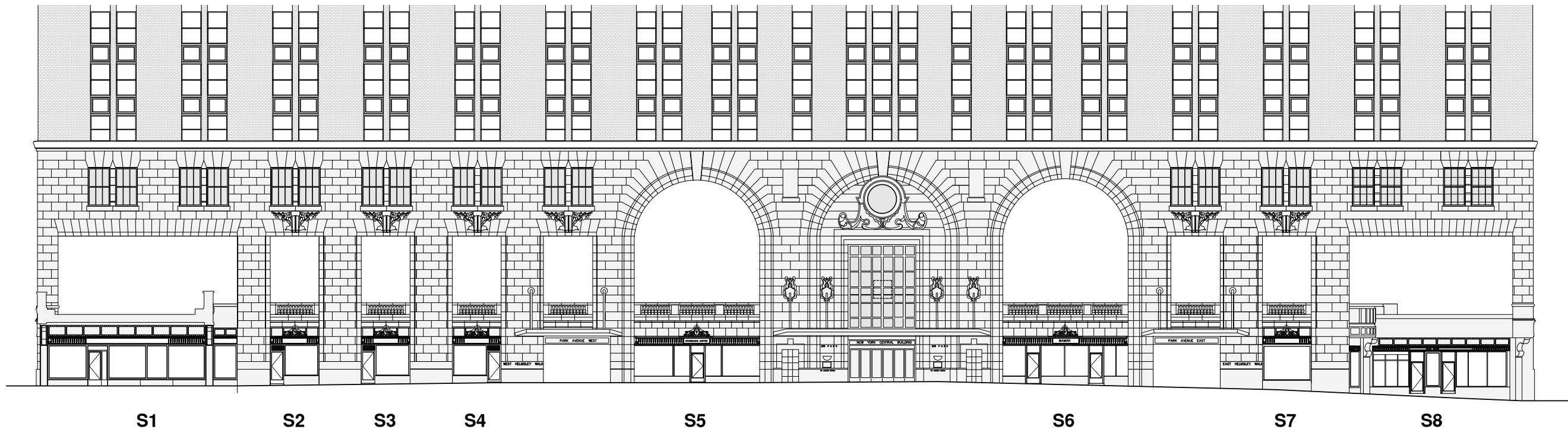


EXISTING ELEVATION

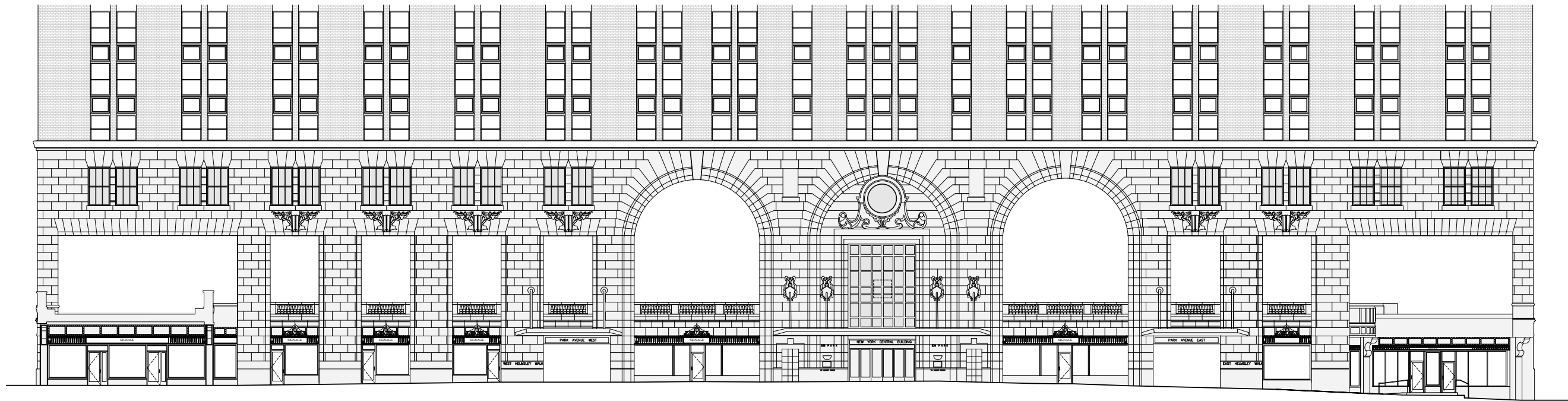


PROPOSED ELEVATION

VANDERBILT AVENUE
EXISTING + PROPOSED ELEVATIONS



45TH STREET
EXISTING PLAN + ELEVATION



S1
(ENTRY
TYPE 4)

S2
(ENTRY
TYPE 5)

S3
(ENTRY
TYPE 5)

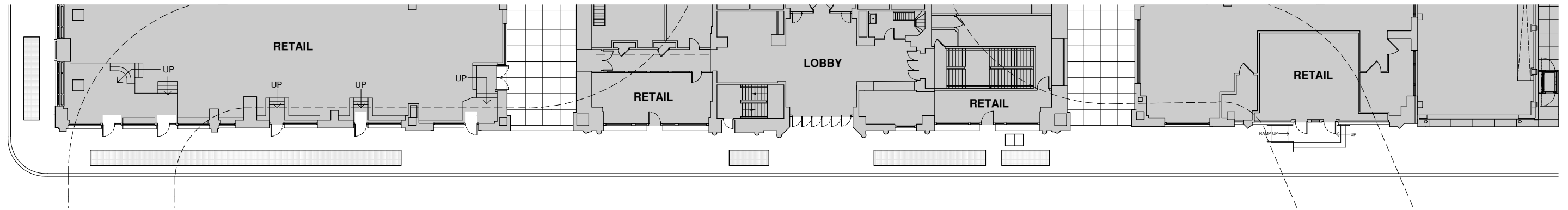
S4
(ENTRY
TYPE 5)

S5
(ENTRY
TYPE 6)

S6
(ENTRY
TYPE 6)

S7
(WINDOW
TYPE 3)

S8
(ENTRY
TYPE 7)



45TH STREET
PROPOSED PLAN + ELEVATION



EXISTING ELEVATION



PROPOSED ELEVATION

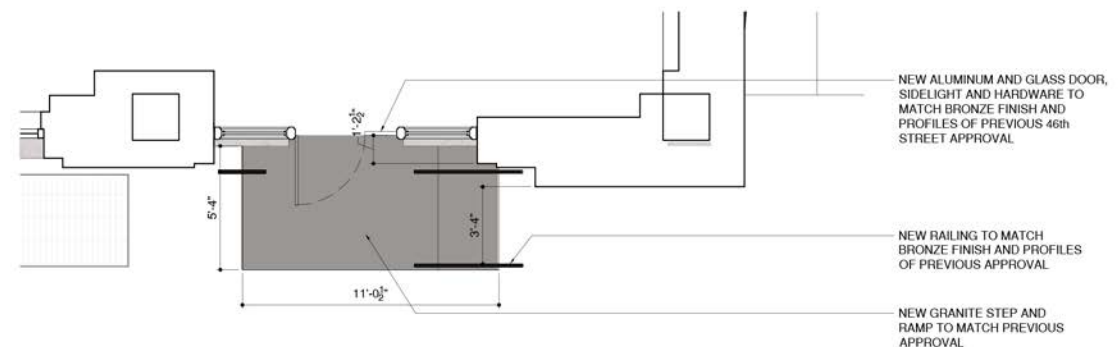
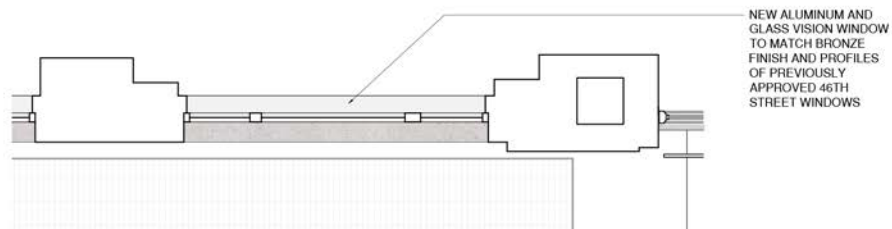
45TH STREET EXISTING + PROPOSED ELEVATIONS



WINDOW TYPE 1



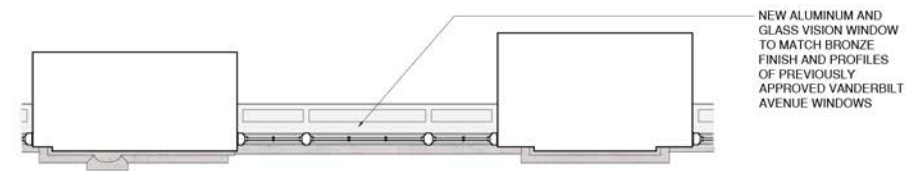
ENTRY TYPE 1



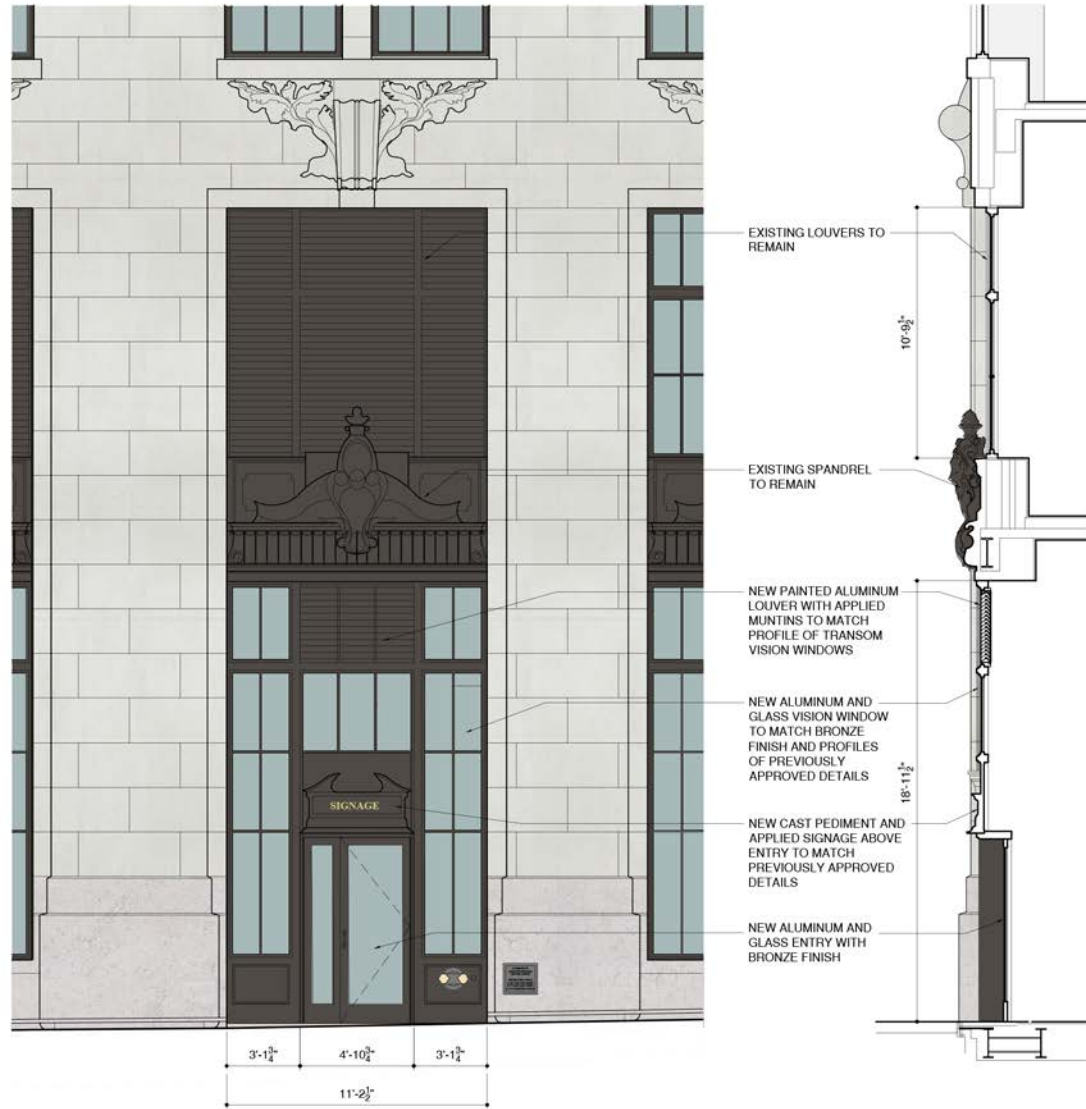
46TH STREET
STOREFRONT INFILL TYPOLOGY MATRIX



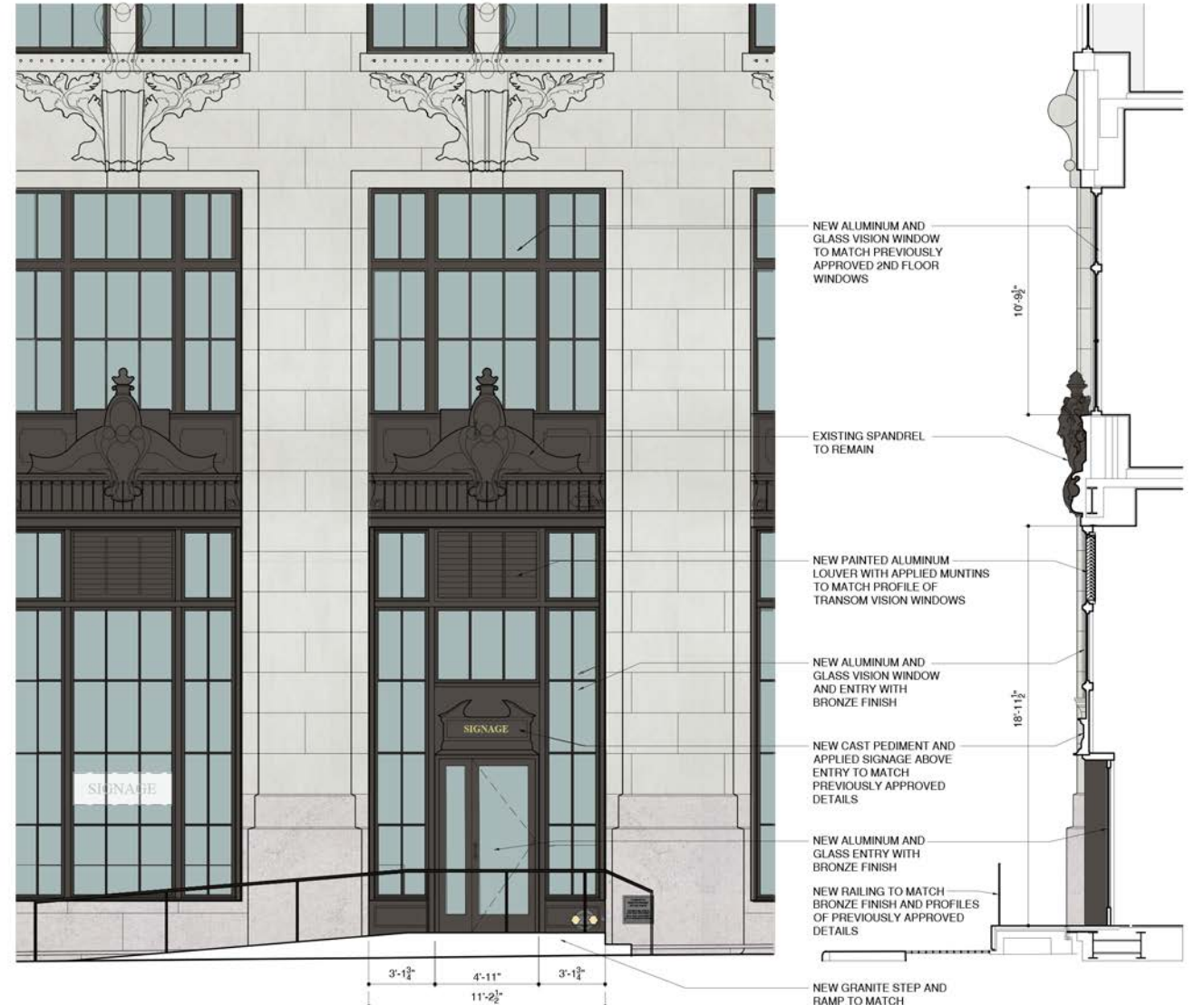
WINDOW TYPE 2



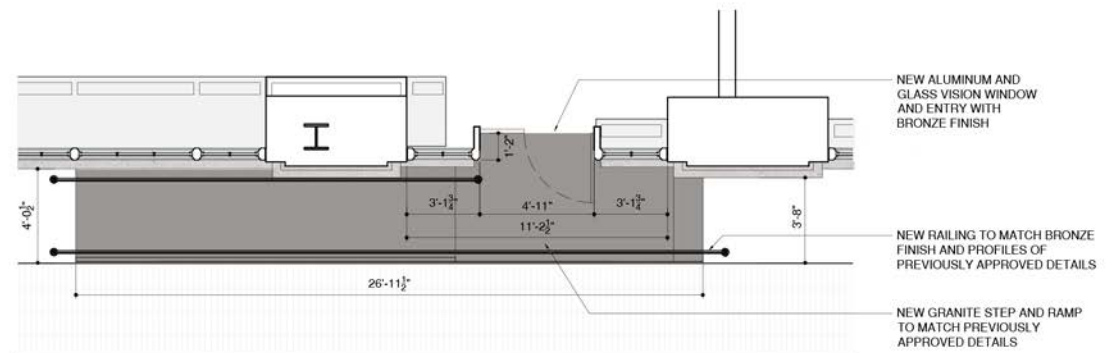
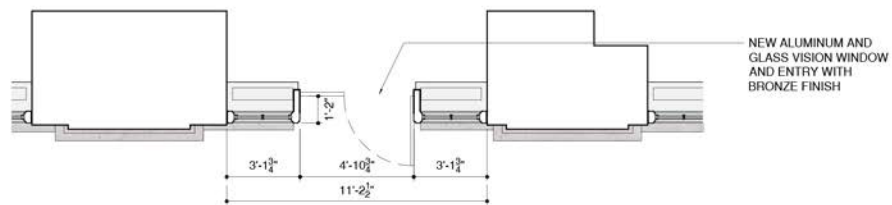
VANDERBILT
STOREFRONT INFILL TYPOLOGY MATRIX



ENTRY TYPE 3



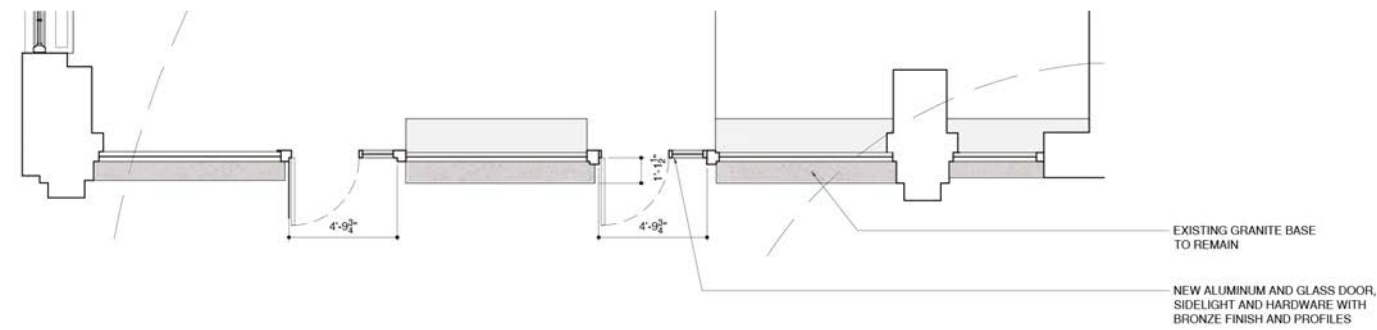
ENTRY TYPE 2



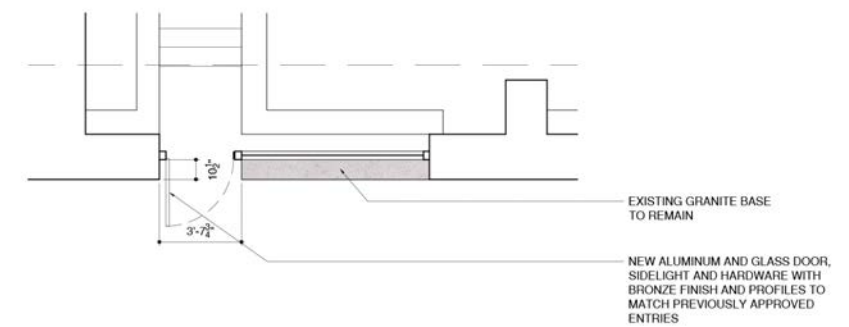
VANDERBILT
STOREFRONT INFILL TYPOLOGY



ENTRY TYPE 4



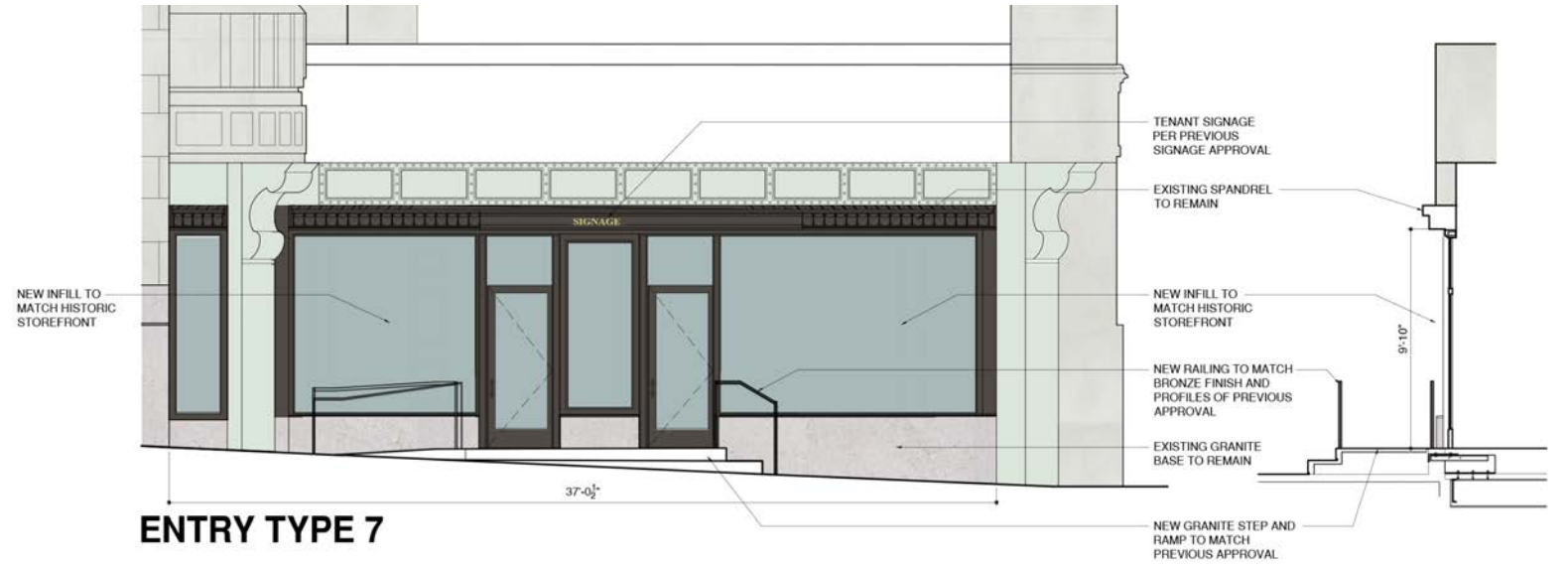
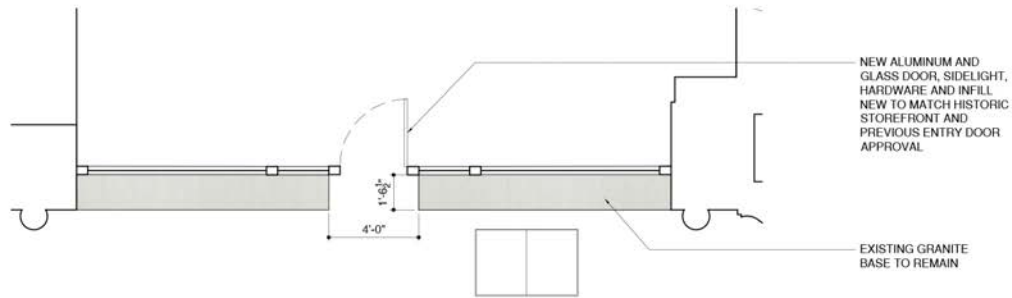
ENTRY TYPE 5



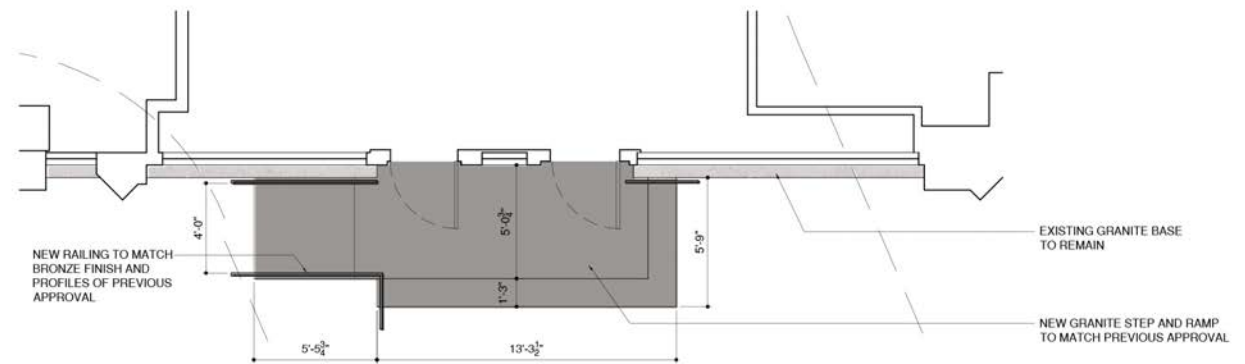
45TH STREET
STOREFRONT INFILL TYPOLOGY MATRIX



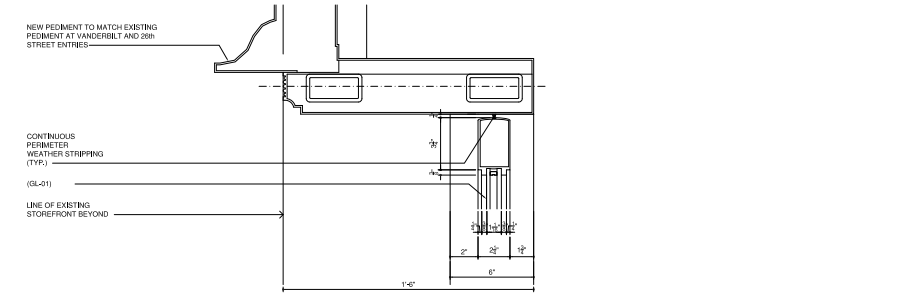
ENTRY TYPE 6



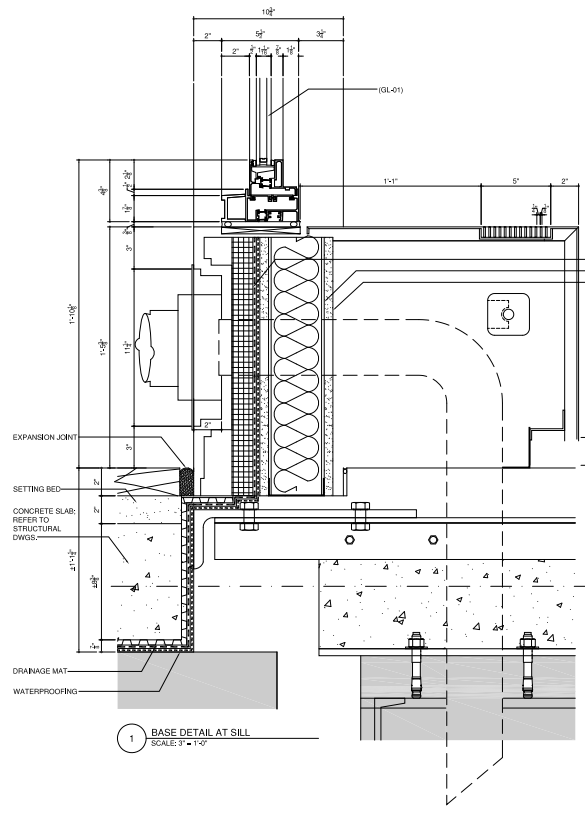
ENTRY TYPE 7



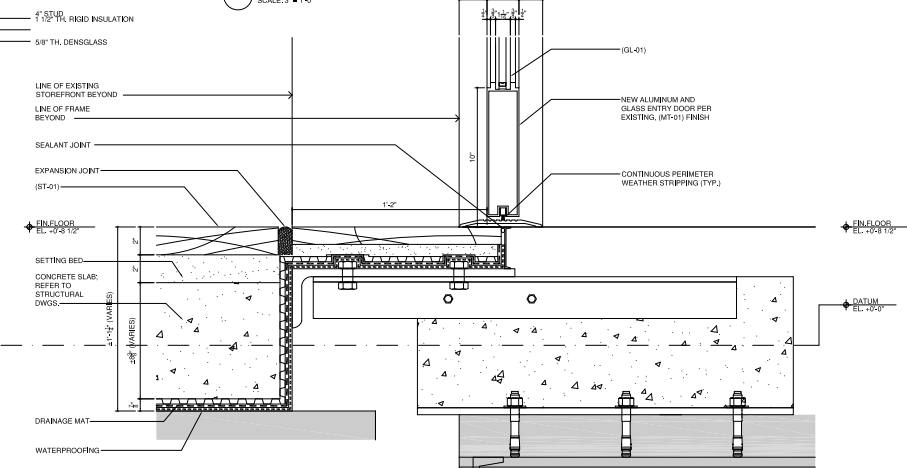
45TH STREET
STOREFRONT INFILL TYPOLOGY MATRIX



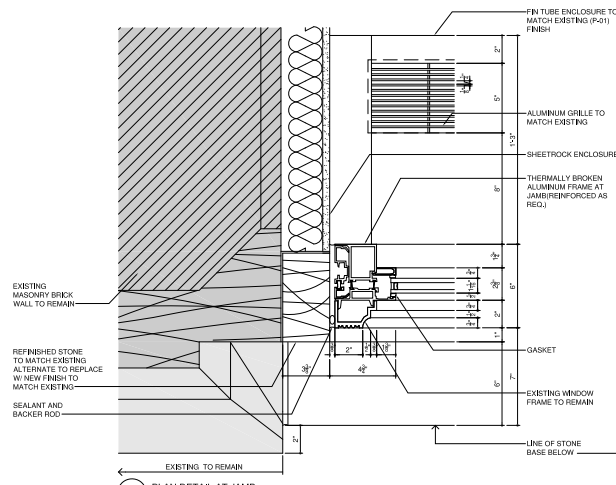
3 SECTION AT SWING DOOR HEAD
SCALE: 3" = 1'-0"



1 BASE DETAIL AT SILL
SCALE: 3" = 1'-0"

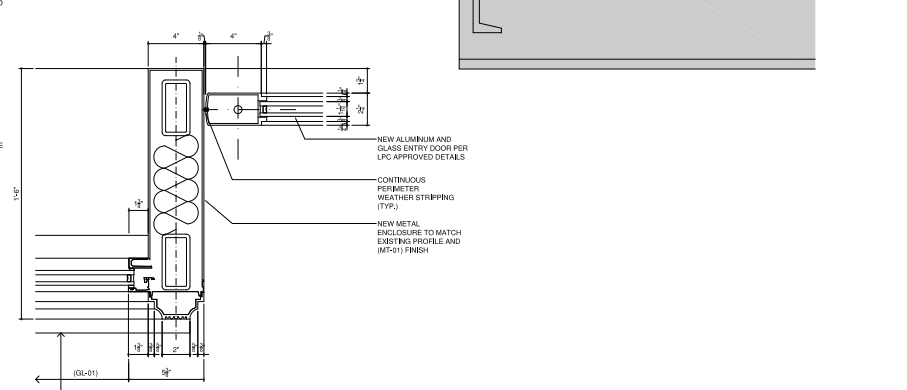


2 SECTION AT SWING DOOR BASE
SCALE: 3" = 1'-0"



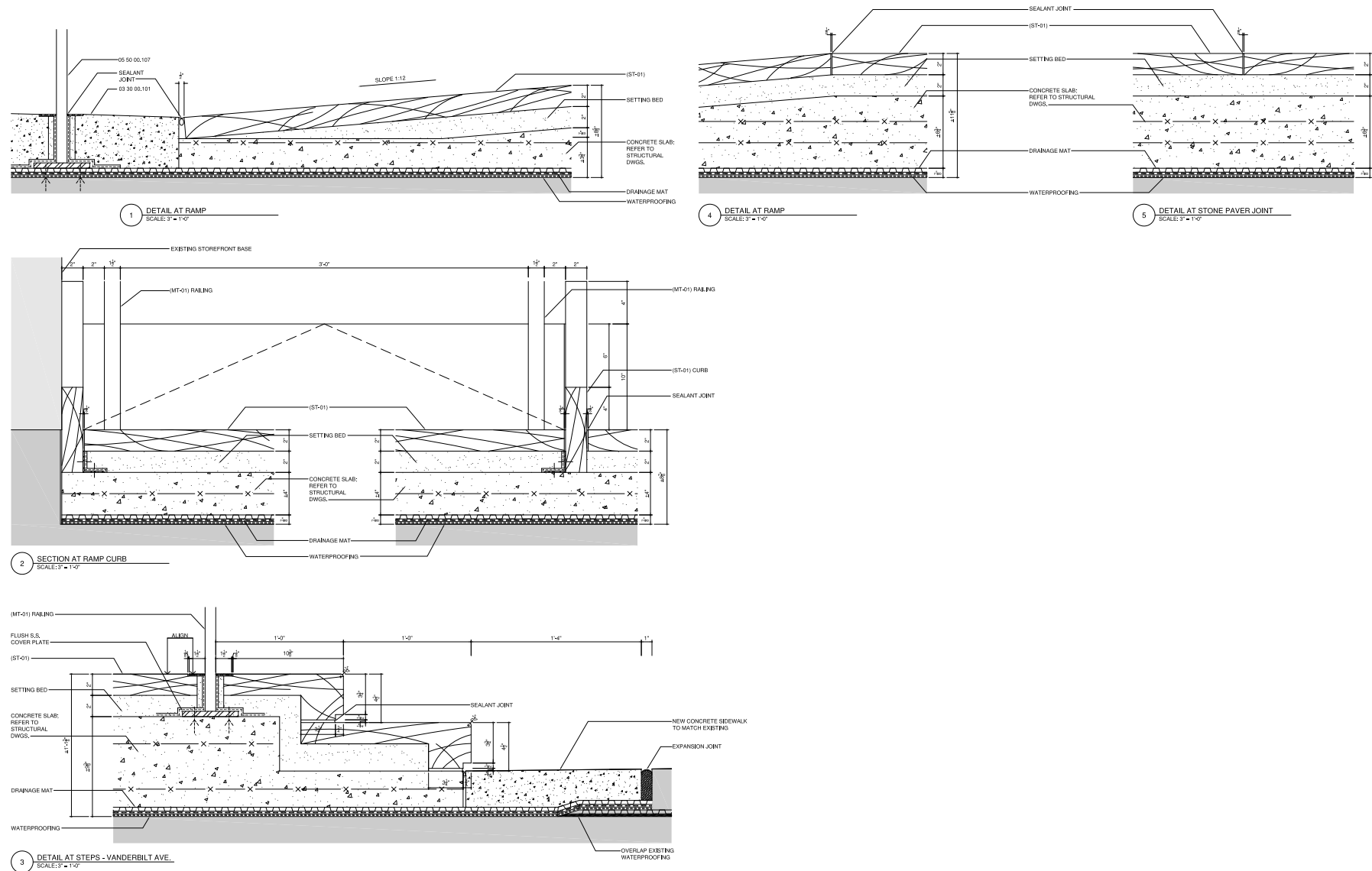
5 PLAN DETAIL AT JAMB
SCALE: 3" = 1'-0"

NOTE: IF WINDOW JAMB ANCHORS ARE REQUIRED, PROVIDE STRAPS TO ANCHOR JAMB FRAME INTO MASONRY WALL BEHIND STONE

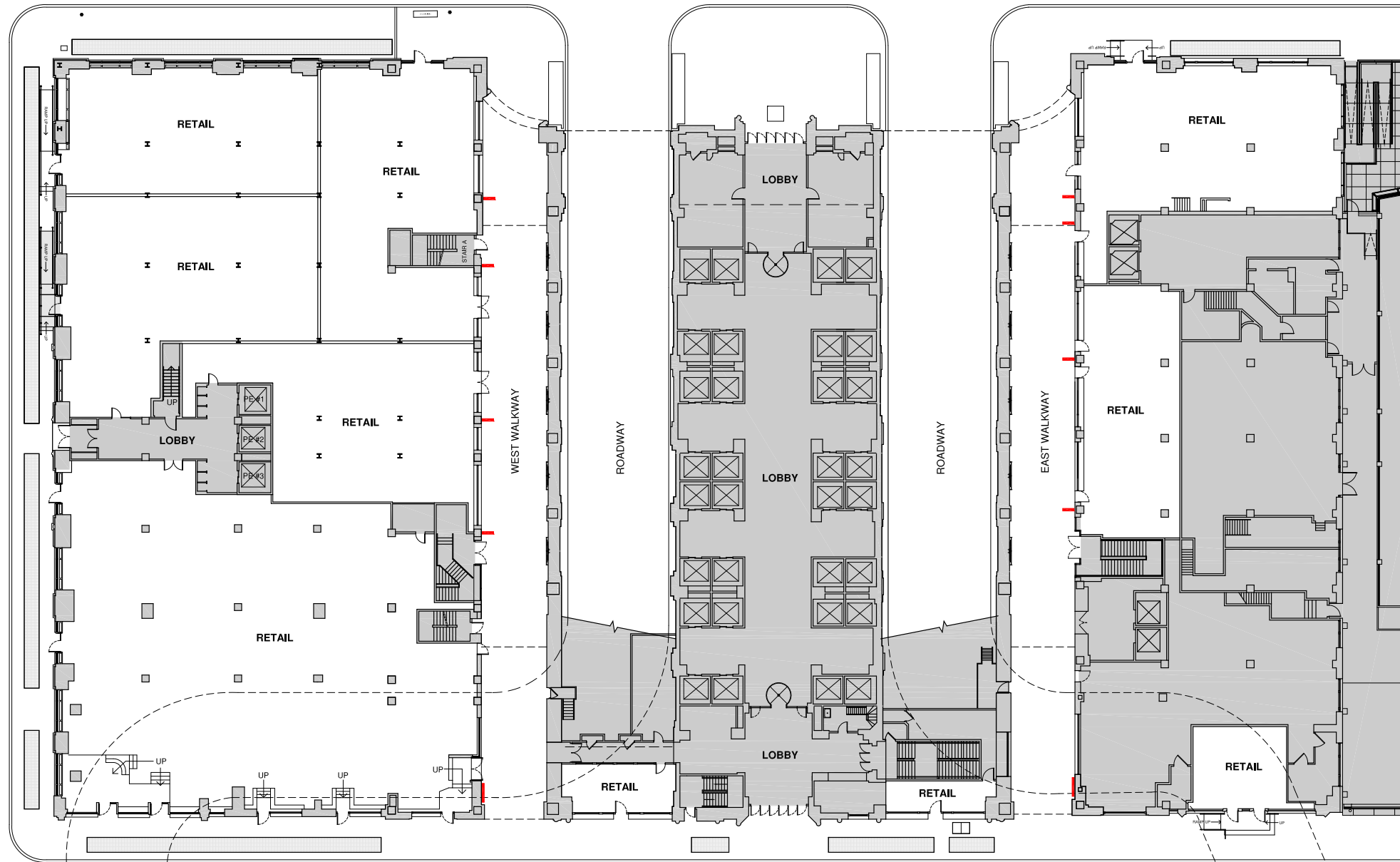


4 PLAN AT STOREFRONT DOOR JAMB
SCALE: 3" = 1'-0"

TYPICAL DETAILS STOREFRONT INFILL





TYPICAL DETAILS STOREFRONT INFILL

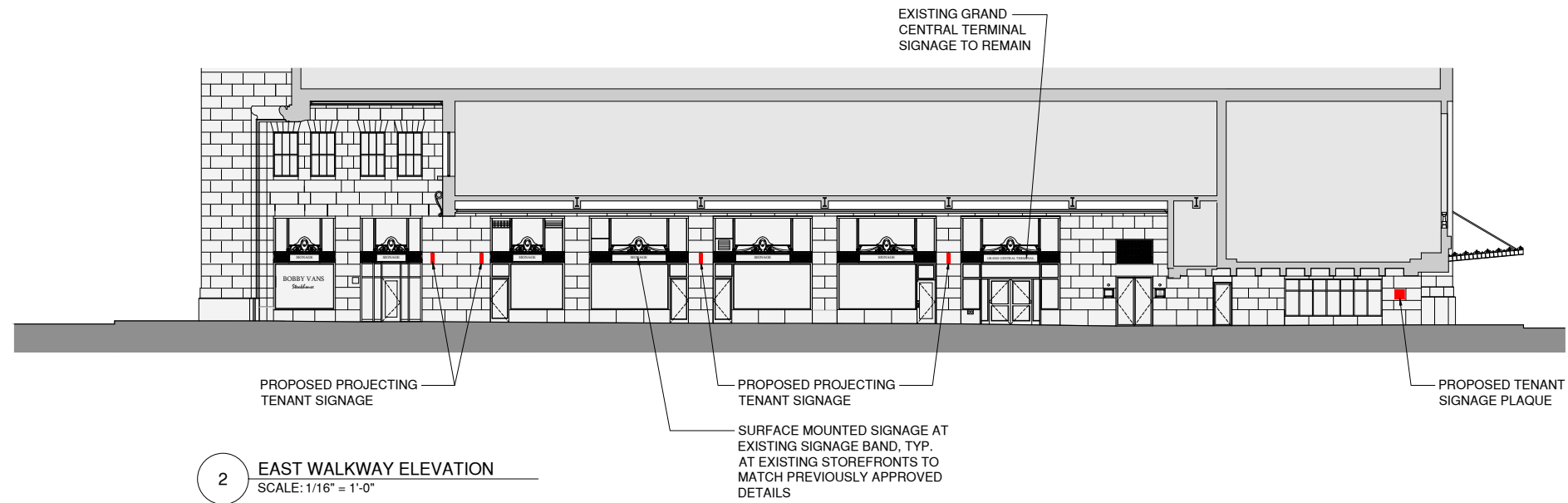
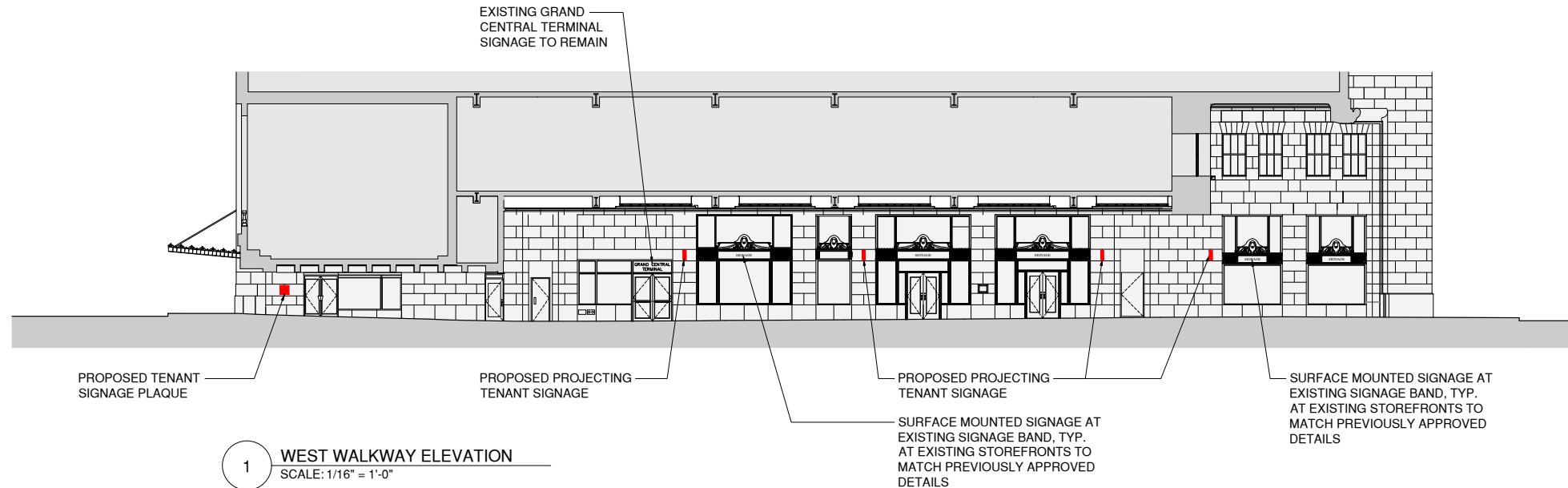


1 PROPOSED GROUND FLOOR PLAN
SCALE: 1/16" = 1'-0"

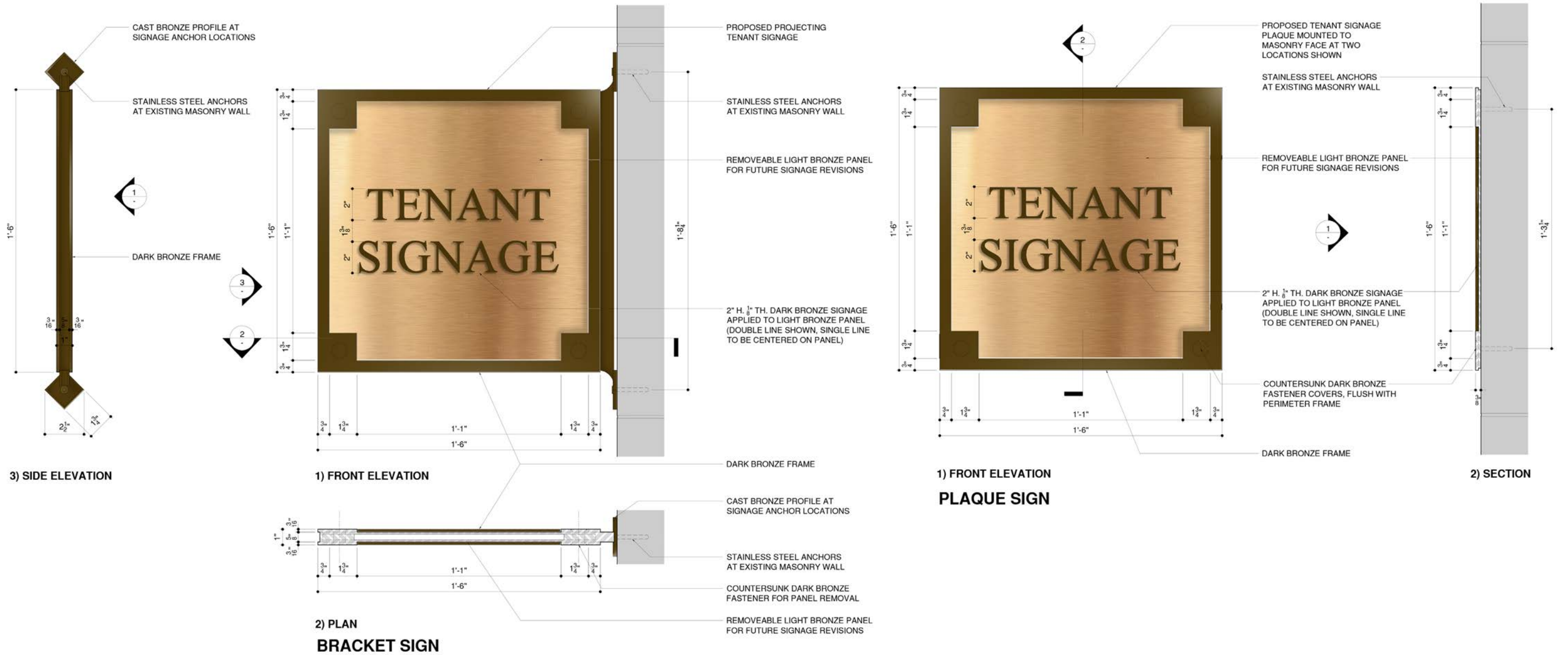
WALKWAY SIGNAGE LEGEND

-  PROPOSED PROJECTING TENANT SIGNAGE
-  PROPOSED TENANT SIGNAGE PLAQUE

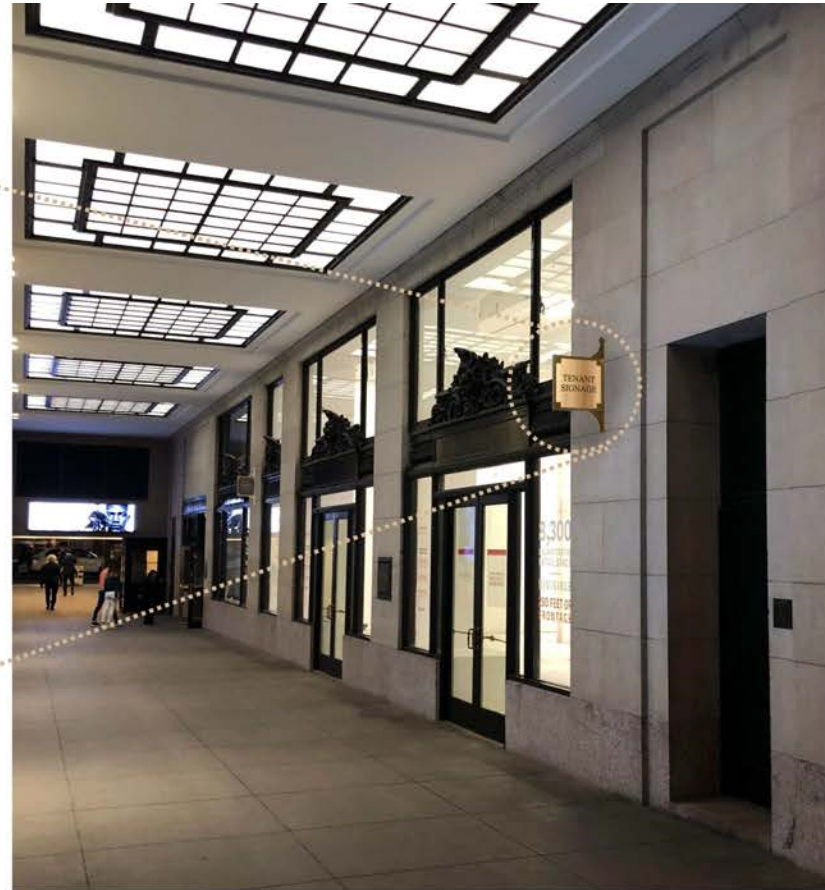
PEDESTRIAN WALKWAY SIGNAGE



PEDESTRIAN WALKWAY SIGNAGE



PEDESTRIAN WALKWAY SIGNAGE



PEDESTRIAN WALKWAY SIGNAGE

APPENDIX



N1



N2



N3



N4



N5



N6



N7

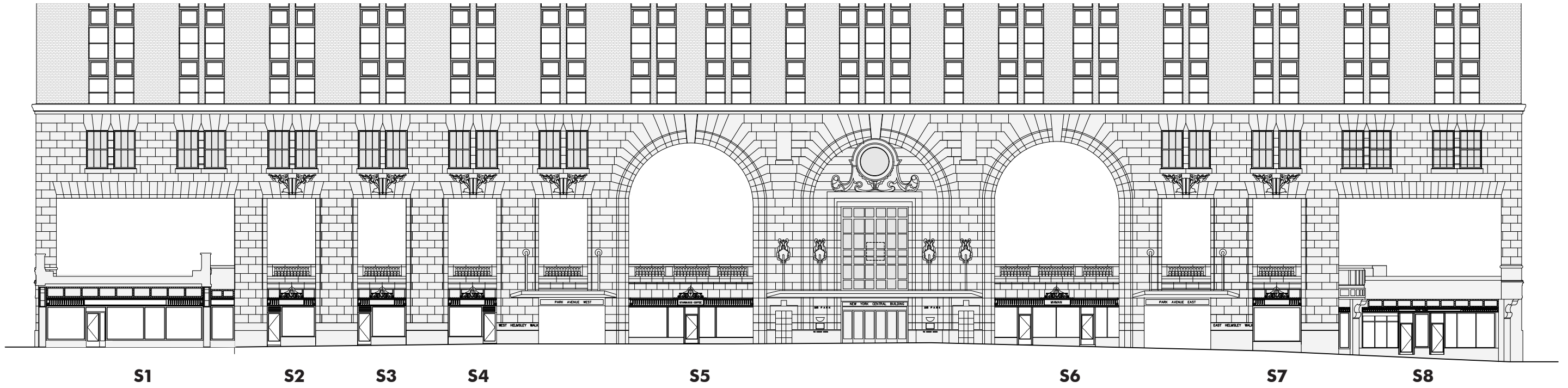


N8

46TH STREET
EXISTING ELEVATION + PHOTOS



VANDERBILT AVENUE
EXISTING ELEVATION + PHOTOS



S1



S2

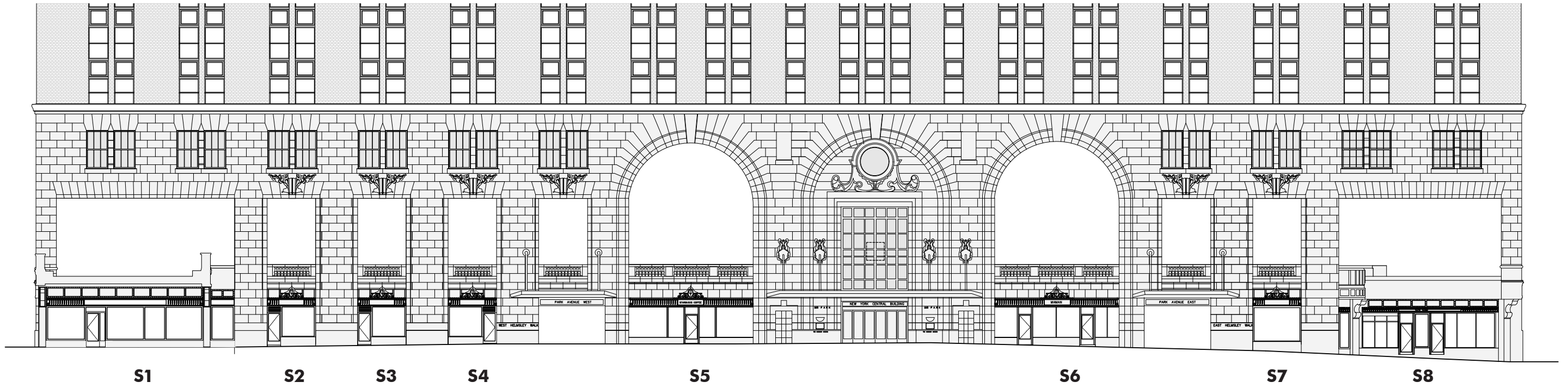


S3



S4

45TH STREET
EXISTING ELEVATION + PHOTOS



S1

S2

S3

S4

S5

S6

S7

S8



S5



S6



S7



S8

45TH STREET
EXISTING ELEVATION + PHOTOS



46TH STREET
HISTORIC IMAGE

1975



46TH STREET (EAST)
HISTORIC IMAGES



46TH STREET (WEST)
HISTORIC IMAGES

230 PARK AVENUE | LPC STOREFRONT MASTERPLAN | 07.19.2022

1987



1987

VANDERBILT AVENUE HISTORIC IMAGES



1987

VANDERBILT AVENUE
HISTORIC IMAGES



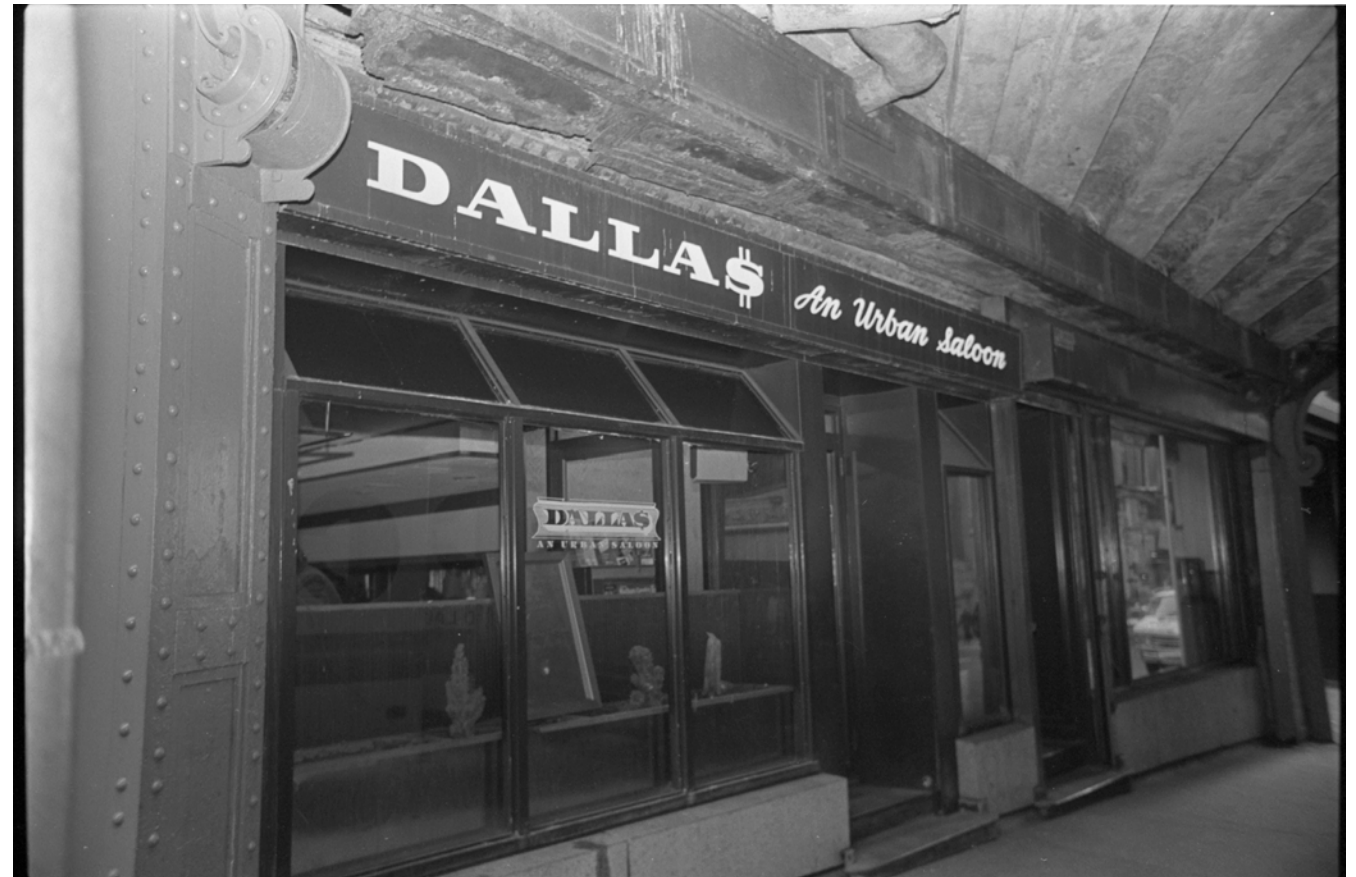
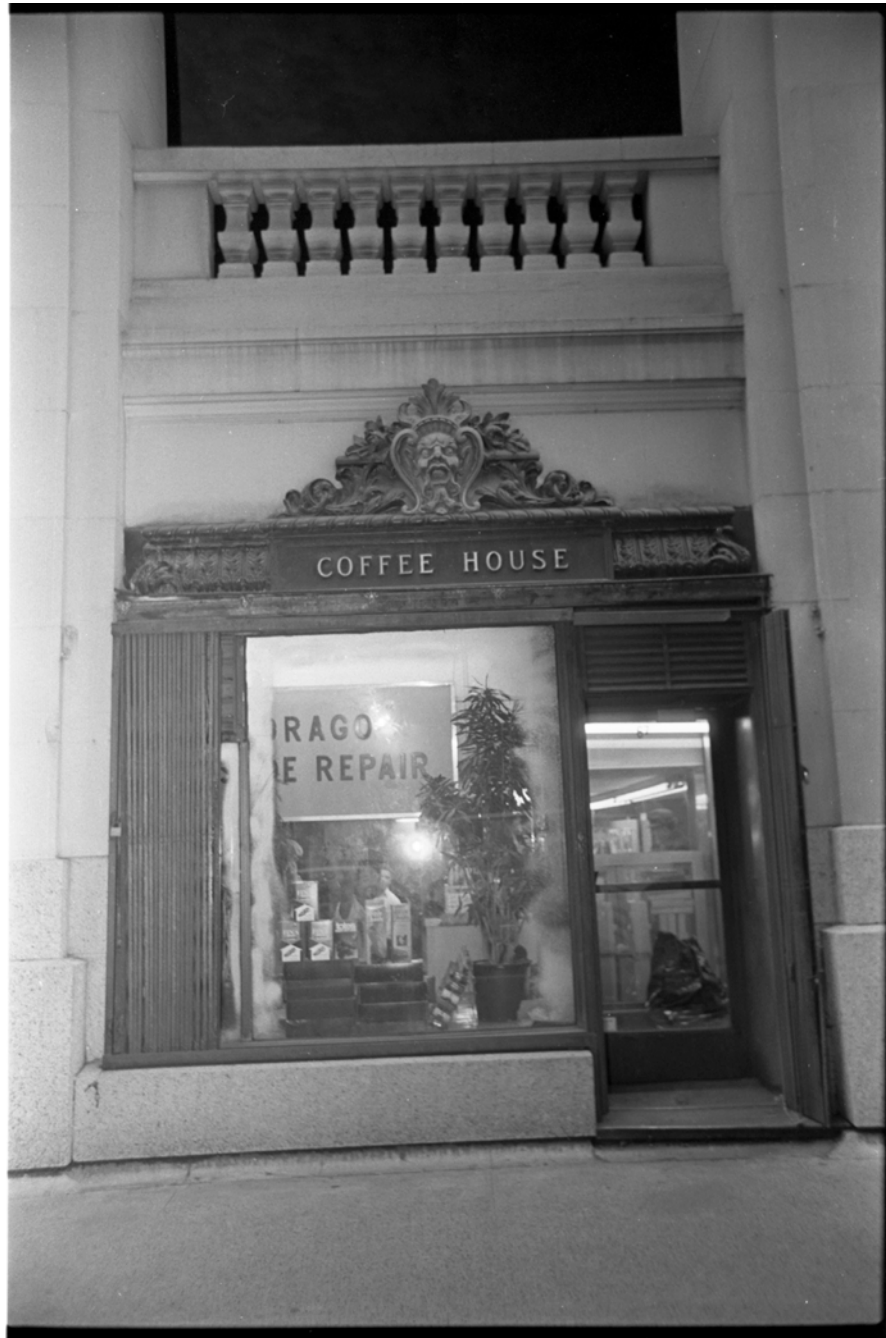
1987

VANDERBILT AVENUE HISTORIC IMAGES



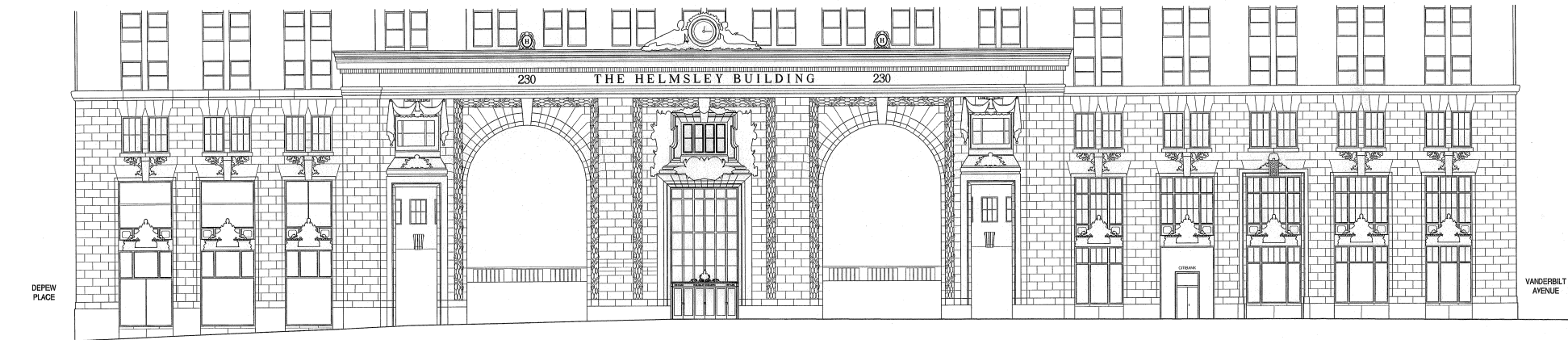
1987

45TH STREET HISTORIC IMAGES

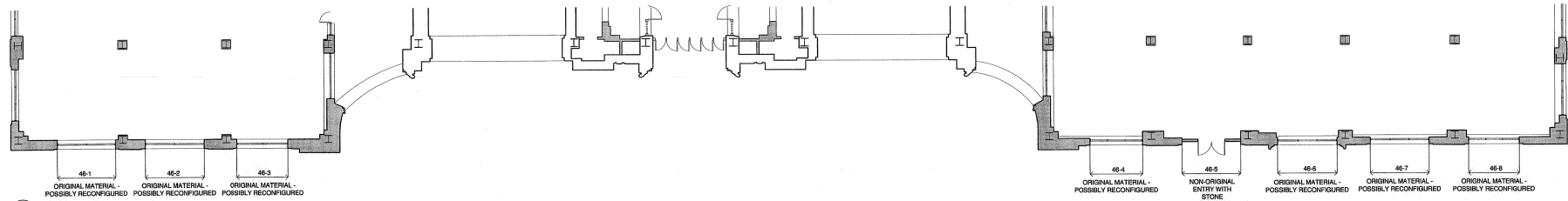


1987

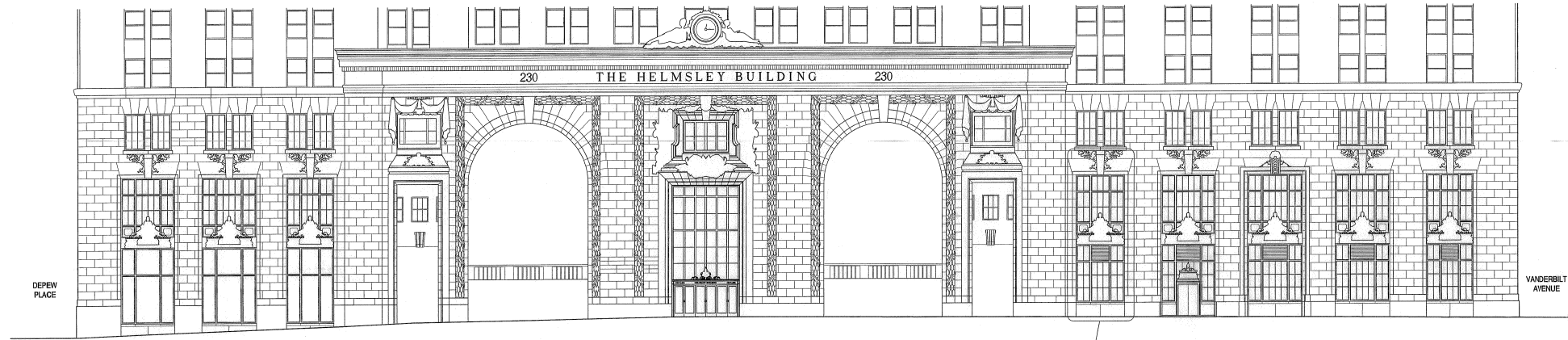
45TH STREET
HISTORIC IMAGES



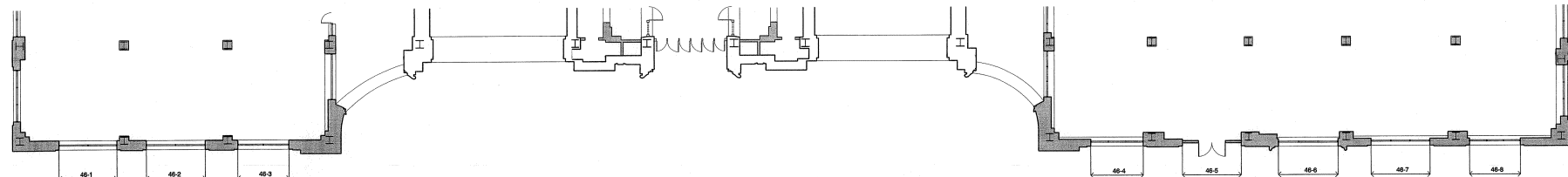
1 EXISTING 46TH STREET ELEVATION
3/32"=1'-0"



2 EXISTING PLAN
3/32"=1'-0"



3 PROPOSED 46TH STREET ELEVATION
3/32"=1'-0"

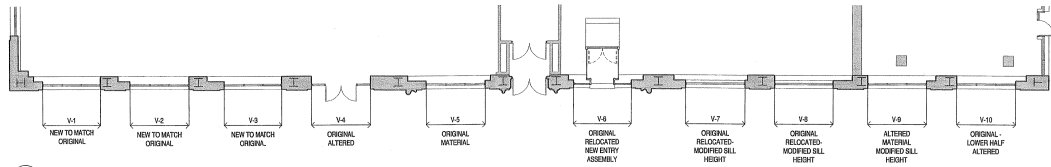


4 PROPOSED PLAN
3/32"=1'-0"

46TH STREET 2003 MASTERPLAN FILINGS



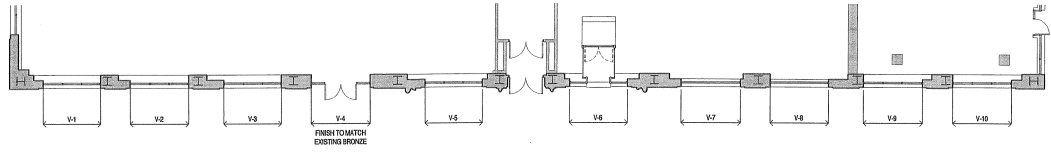
1 EXISTING VANDERBILT AVENUE ELEVATION
3/32"=1'-0"



2 EXISTING PLAN
3/32"=1'-0"

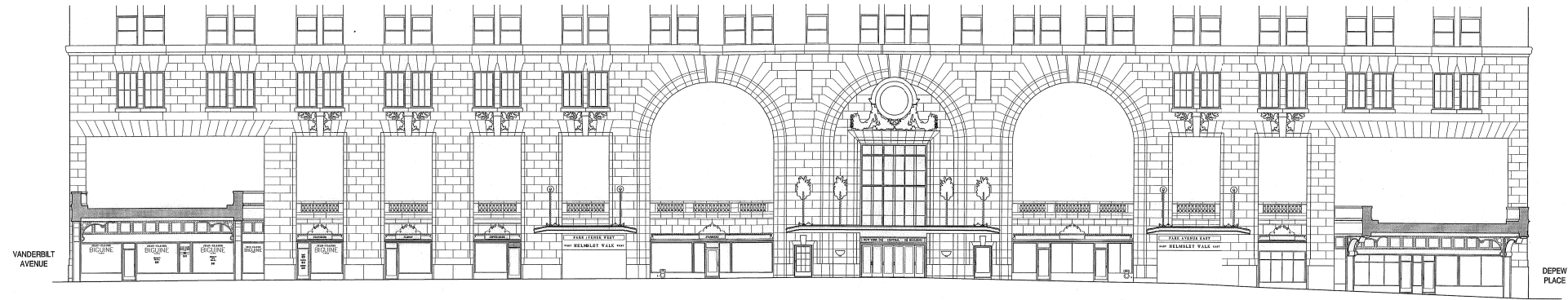


3 PROPOSED VANDERBILT AVENUE ELEVATION
3/32"=1'-0"

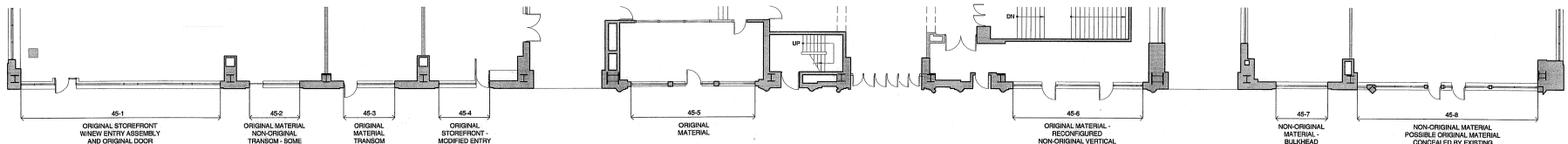


4 PROPOSED PLAN
3/32"=1'-0"

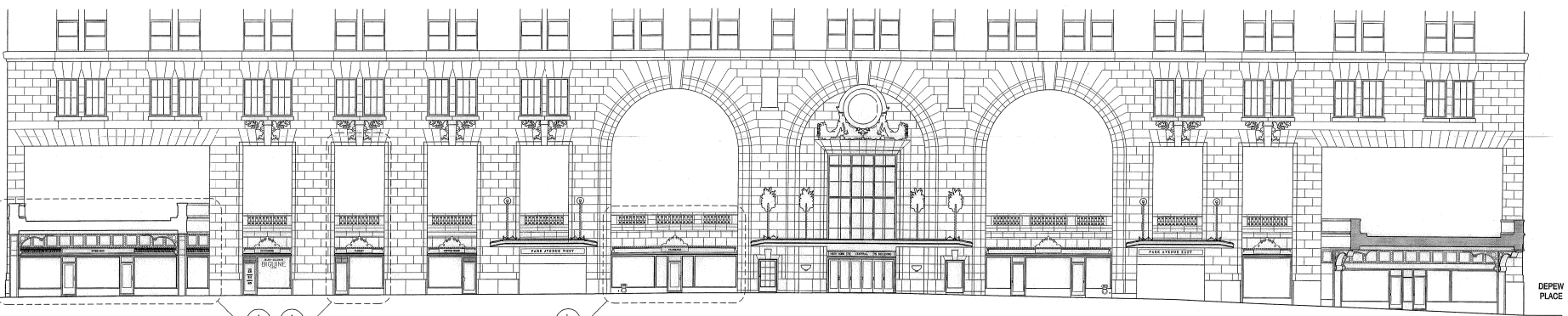
VANDERBILT 2003 MASTERPLAN FILINGS



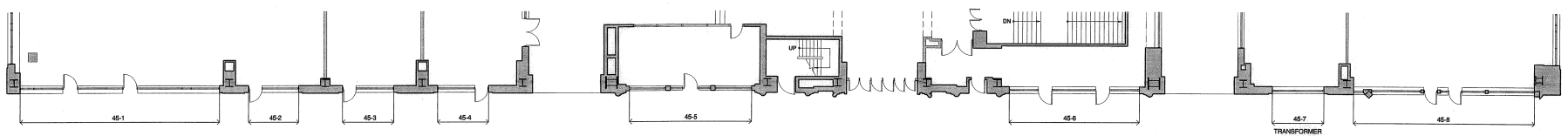
1 EXISTING 45TH STREET ELEVATION
3/8"=1'-0"



2 EXISTING PLAN
3/8"=1'-0"

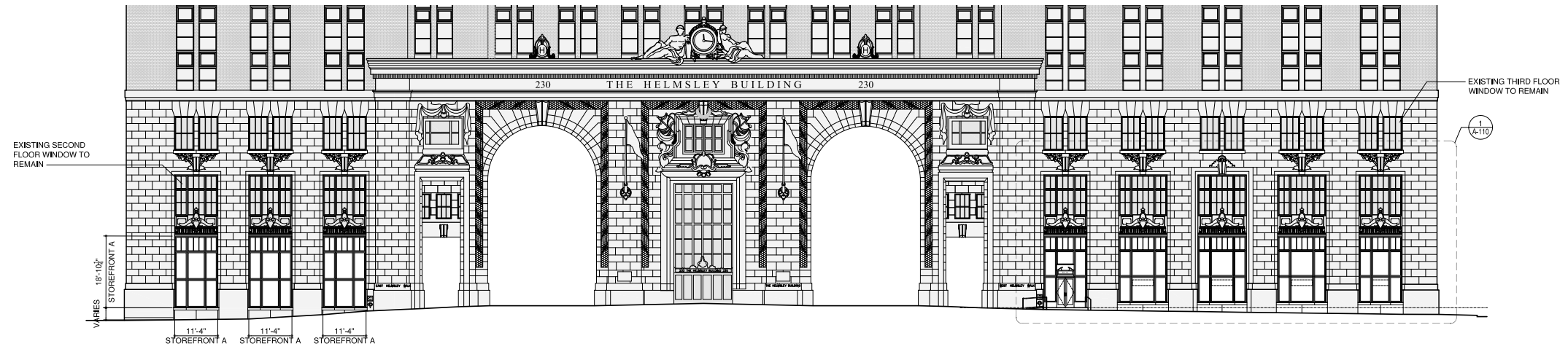


3 PROPOSED 45TH STREET ELEVATION
3/8"=1'-0"



4 PROPOSED PLAN
3/8"=1'-0"

45TH STREET 2003 MASTERPLAN FILINGS



1 STOREFRONT ELEVATION AT 46TH ST.
SCALE: 1/16" = 1'-0"



2 STOREFRONT ELEVATION AT VANDERBILT AVE.
SCALE: 1/16" = 1'-0"

46TH STREET + VANDERBILT 2017 MASTERPLAN FILINGS



46TH STREET + VANDERBILT
2018 MASTERPLAN FILINGS



EMPIRE STATE BUILDING



ROCKEFELLER CENTER

STOREFRONT SIGNAGE
PRECEDENT PHOTOS

The current proposal is:

Preservation Department – Item 5, LPC-22-11658

**230 Park Avenue – New York Central Building/now Helmsley
Building – Individual and Interior Landmark
Borough of Manhattan**

To Testify Please Join Zoom

Webinar ID: 868 9794 8074

Passcode: 501977

By Phone: 1 646-558-8656 US (New York)

877-853-5257 (Toll free) US

888 475 4499 (Toll free)

Note: If you want to testify on an item, join the Zoom webinar at the agenda’s “Be Here by” time (about an hour in advance). When the Chair indicates it’s time to testify, “raise your hand” via the Zoom app if you want to speak (*9 on the phone). Those who signed up in advance will be called first.