

January 25<sup>th</sup>, 2022  
Public Hearing

The current proposal is:

Preservation Department – Item 5, LPC-22-04971

## Central Park – Delacorte Theatre – Scenic Landmark Borough of Manhattan

To Testify Please Join Zoom

**Webinar ID:** 822 8982 9092

**Passcode:** 003928

By Phone: 1 646-558-8656 US (New York)

877-853-5257 (Toll free) US

888 475 4499 (Toll free)

**Note:** If you want to testify on an item, join the Zoom webinar at the agenda's "Be Here by" time (about an hour in advance). When the Chair indicates it's time to testify, "raise your hand" via the Zoom app if you want to speak (\*9 on the phone). Those who signed up in advance will be called first.





# DELACORTE THEATER

LPC Public Hearing

January 25, 2022



# INTRODUCTION & GOALS



**THE PUBLIC.** ennead architects

Delacorte Theater  
Central Park



# Project Goals

The Public Theater has prepared a proposal for the renovation of the Delacorte Theater within the existing footprint that can be implemented in its entirety or in a series of phases and within the proposed budget.

The proposed renovation project will require no change in the existing Certificate of Occupancy, use or building classification.

Three pillars to define scope of work:

1. Code + Life Safety Needs
2. Infrastructure Updates and Efficiencies
3. Theatrical Program Needs

## Code and ADA Approach

Renovation to be filed under the 1968 NYC Building Code

Renovation to be filed as an Alt. 2 with the Department of Building

Phased Construction proposed off-season over three years







**THE PUBLIC.** ennead architects

Delacorte Theater  
Central Park



- Safer and more comfortable conditions for staff, artists and audiences (including those with disabilities)
- Streamlined backstage operations
- Revitalized exterior for a more dynamic aesthetic experience for park users and theater goers alike
- Improved theatrical infrastructure yielding higher production values for audiences







**THE PUBLIC.** ennead architects

**Delacorte Theater**  
**Central Park** | Project Location





**THE PUBLIC.** ennead architects

Delacorte Theater  
Central Park | Existing Building Exterior





**THE PUBLIC.** ennead architects

Delacorte Theater  
Central Park | Proposed Building Exterior



# APPROPRIATENESS



**THE PUBLIC.** ennead architects

Delacorte Theater  
Central Park





Existing

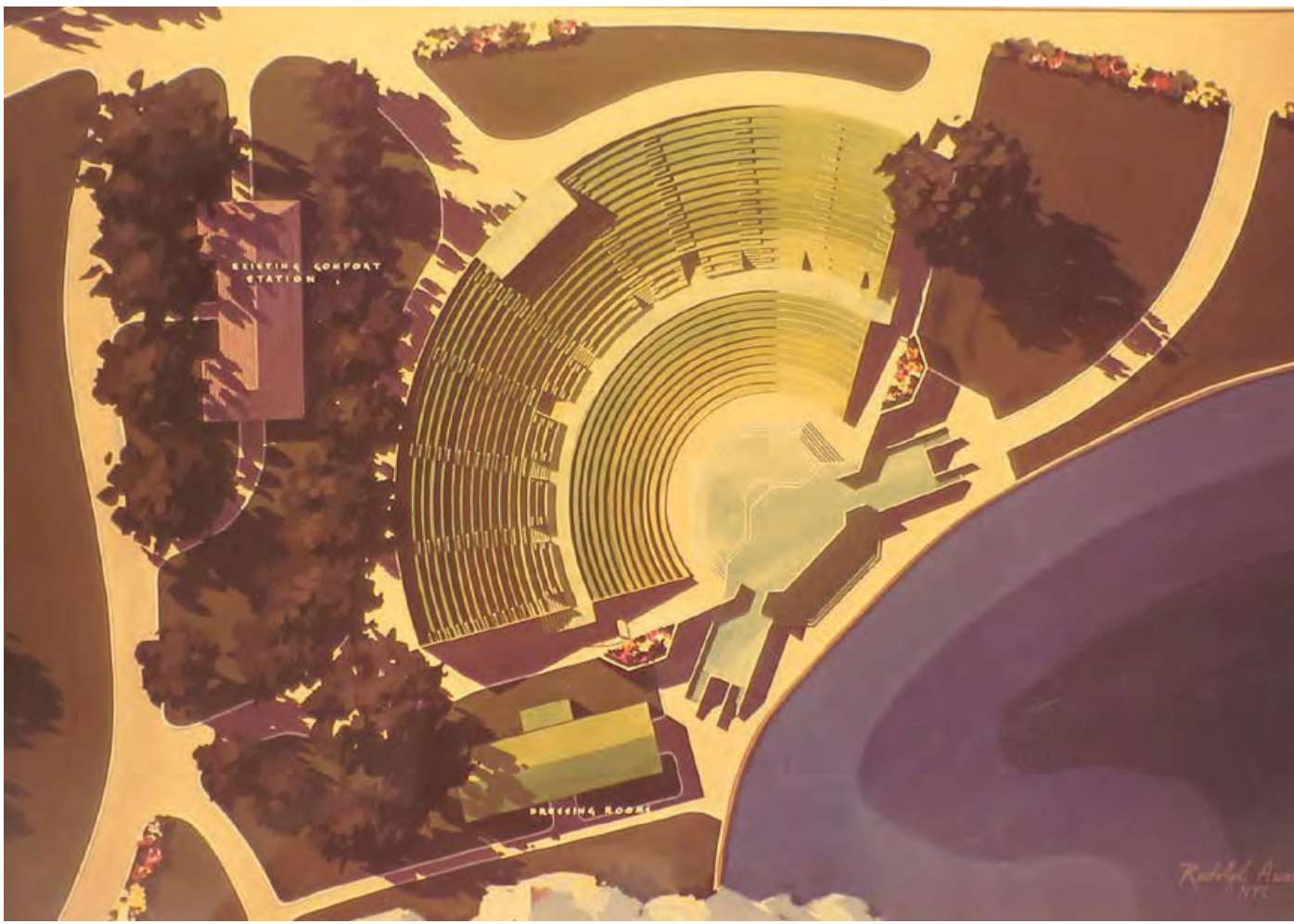


Proposed





View of The Completed Great Lawn (The Park and The People)  
1936



Rendered Aerial View of The Delacorte Theater (NYPL)  
1961-63







View of The Exterior, CA. 1962 (NYPL)  
1961- 62



**THE PUBLIC.** ennead architects



View of Seating Bowl, 1966  
1966

**Delacorte Theater**  
**Central Park | Site History**

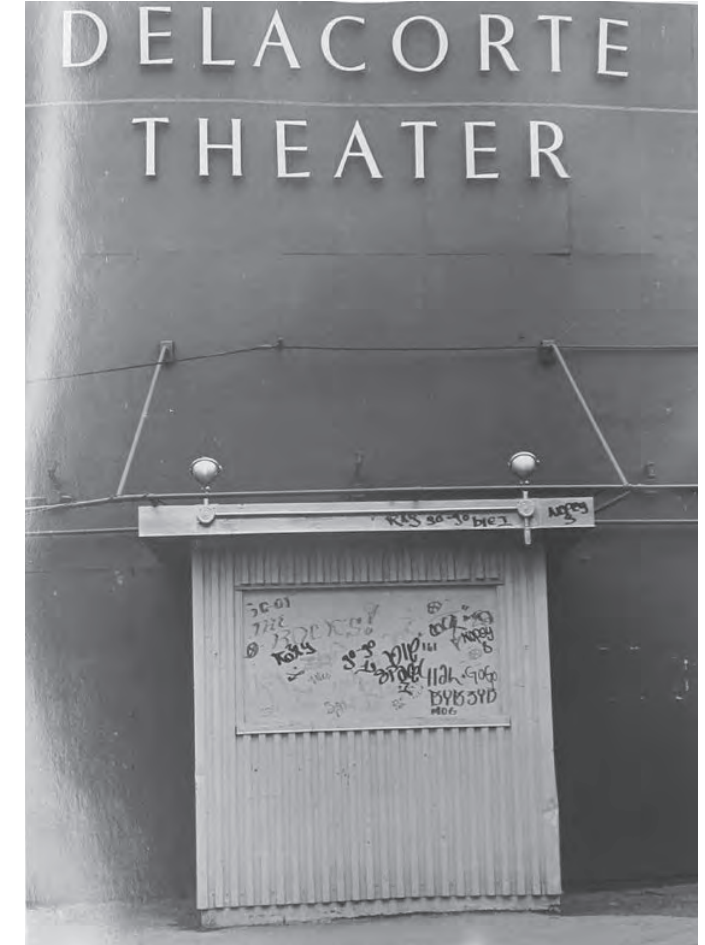




View of Site (Avery Library)  
1974



Views Showing Deteriorating Conditions at Theater, CA. 1974 (NYPL)



**THE PUBLIC.** ennead architects

Delacorte Theater  
Central Park | Site History



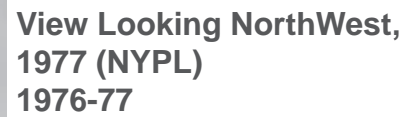
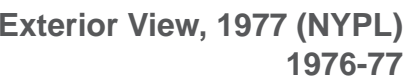


View of Stage Area during Rehabilitation, 1976 (NYPL)  
1976

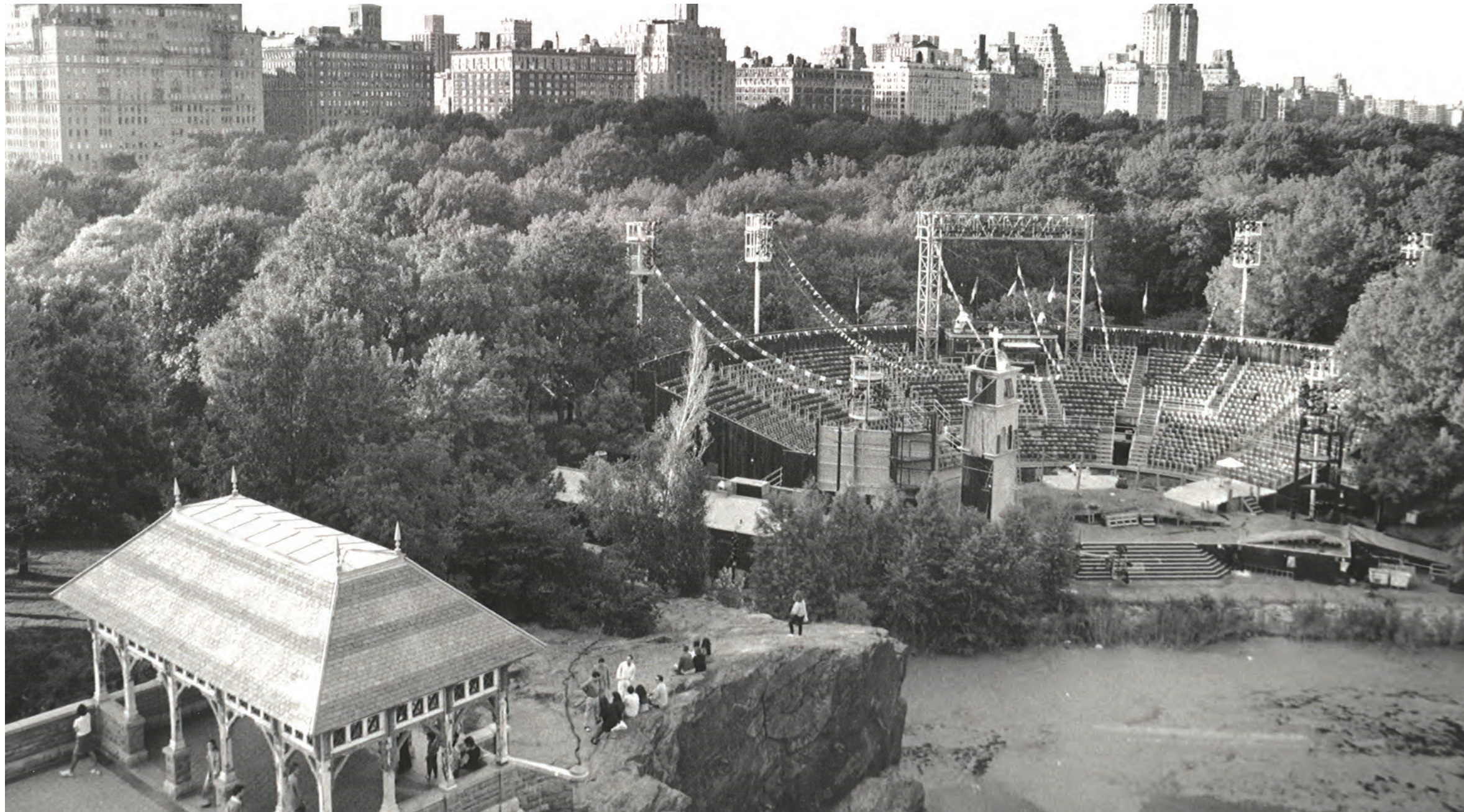


View of Stands during Rehabilitation, 1976 (NYPL)  
1976



[illegible]





View of The Theater, Date Unknown



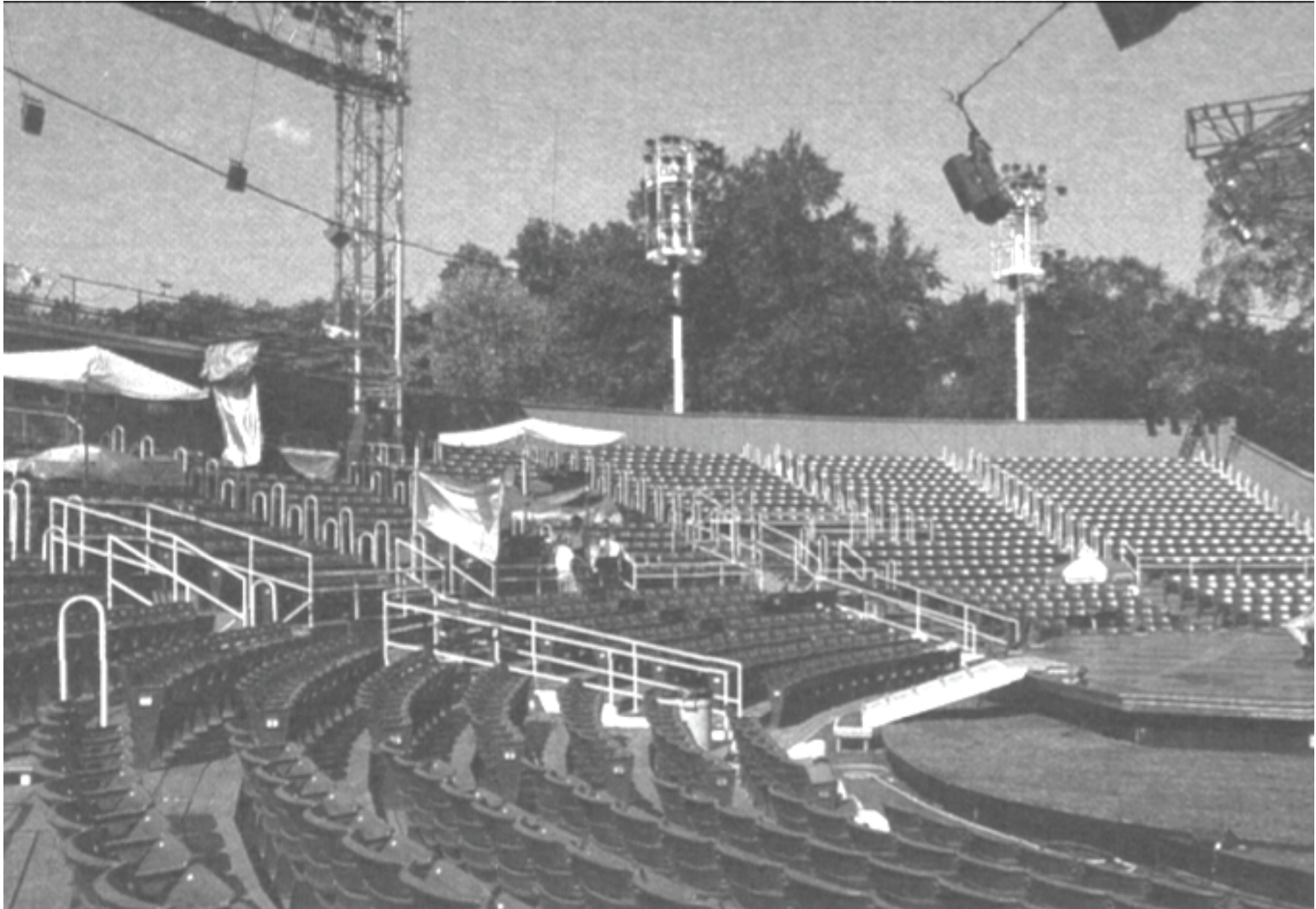
**THE PUBLIC.** ennead architects

Delacorte Theater  
Central Park | Site History





View of Exterior After Renovation by Kapell & Kostow, 1999 (Entertainment Design)  
1998-99



View of Grandstand After Renovation by Kapell & Kostow, 1999 (Entertainment Design)  
1998-99



NYC Parks

**THE PUBLIC.** ennead architects

**Delacorte Theater**  
**Central Park | Site History**





View of Exterior  
2021



View of Grandstand  
2021



NYC Parks

**THE PUBLIC.** ennead architects

**Delacorte Theater**  
**Central Park | Existing Delacorte**



View of Deteriorating  
Conditions (Improvised /  
No Waterproofing)  
2021



View of Deteriorating  
Conditions  
2021



View of Deteriorating  
Conditions (Inefficient  
Work Areas)  
2021



View of Deteriorating  
Conditions  
2021







Central Park Zoo (Aymar Embury II)  
1934



Central Park Zoo Renovation (Roche Dinkeloo)  
1988



**THE PUBLIC.** ennead architects

Delacorte Theater  
Central Park | Park Projects





Lasker Pool and Rink  
 Fordyce & Hamby Associates(Central Park Conservancy)  
 1963



Harlem Meer Center  
 Central Park Conservancy, Susan T. Rodriguez Architecture/Design, Mitchell Giurgola (Central Park Conservancy)  
 2019 (Rendered View, Construction in Progress)



**THE PUBLIC.** ennead architects

Delacorte Theater  
 Central Park | Park Projects





Wollman Memorial Rink, Prospect Park (Prospect Park Alliance)  
1961



Lefrak Center at Lakeside, Prospect Park (Todd Williams Billie Tsien Architects)  
2013



NYC Parks

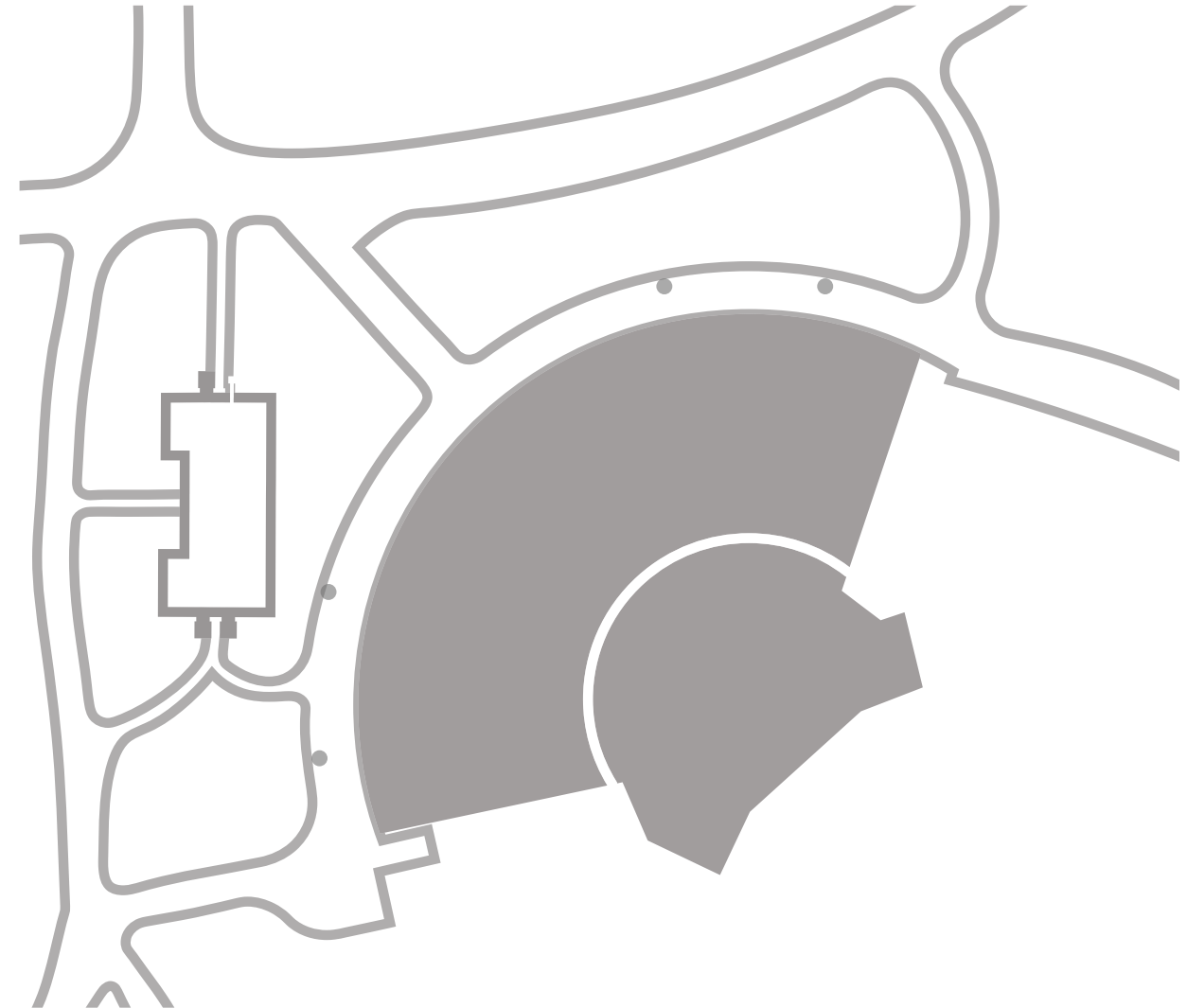
**THE PUBLIC.** ennead architects

Delacorte Theater  
Central Park | Park Projects



# PROPOSAL

- Exterior
- Plans & Elevations
- Accessibility
- Exterior Wall, Canopy & Signage Details
- Service Window
- Lighting Towers
- Seating
- Fencing
- Park Views



**THE PUBLIC.** ennead architects

Delacorte Theater  
Central Park | Proposal



# EXTERIOR



**THE PUBLIC.** ennead architects

Delacorte Theater  
Central Park





**THE PUBLIC.** ennead architects

Delacorte Theater  
Central Park | Building Exterior 01







**THE PUBLIC.** ennead architects

**Delacorte Theater**  
**Central Park | Building Exterior 02**





**THE PUBLIC.** ennead architects

**Delacorte Theater**  
**Central Park | Building Exterior 03**





\* Existing tree to remain, digitally edited out to show theater signage



**THE PUBLIC.** ennead architects

**Delacorte Theater**  
**Central Park | Building Exterior 04**





**THE PUBLIC.** ennead architects

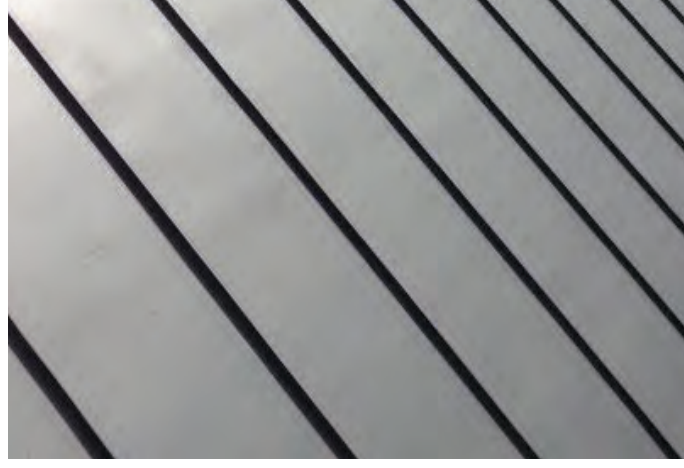
**Delacorte Theater**  
**Central Park** | Building Exterior 01 with Lights



At Installation



Weathered



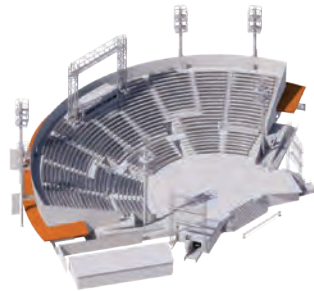
Shell Facade - Cedar



Railings/ Window Frame - Painted Steel



Seating Bowl Decking - Kebony



Canopy - Zinc



**THE PUBLIC.** ennead architects

**Delacorte Theater**  
**Central Park | Materials**



# PLANS & ELEVATIONS

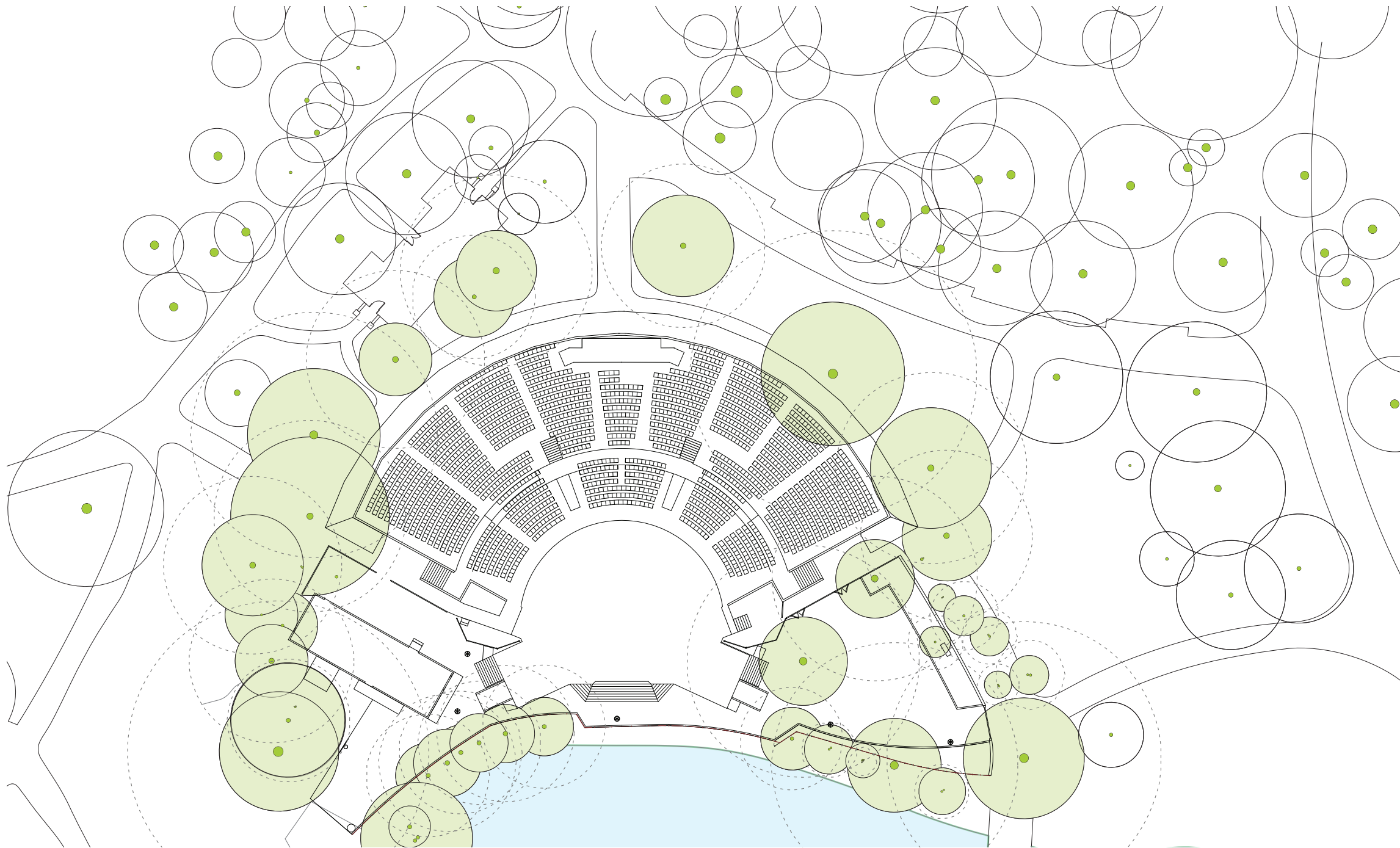
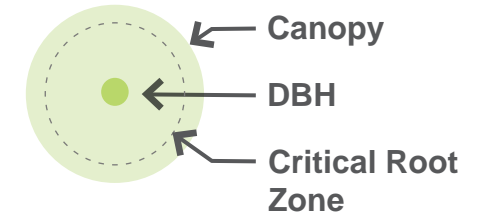


**THE PUBLIC.** ennead architects

Delacorte Theater  
Central Park



## Legend



**THE PUBLIC.** ennead architects

**Delacorte Theater**  
**Central Park | Tree Inventory**

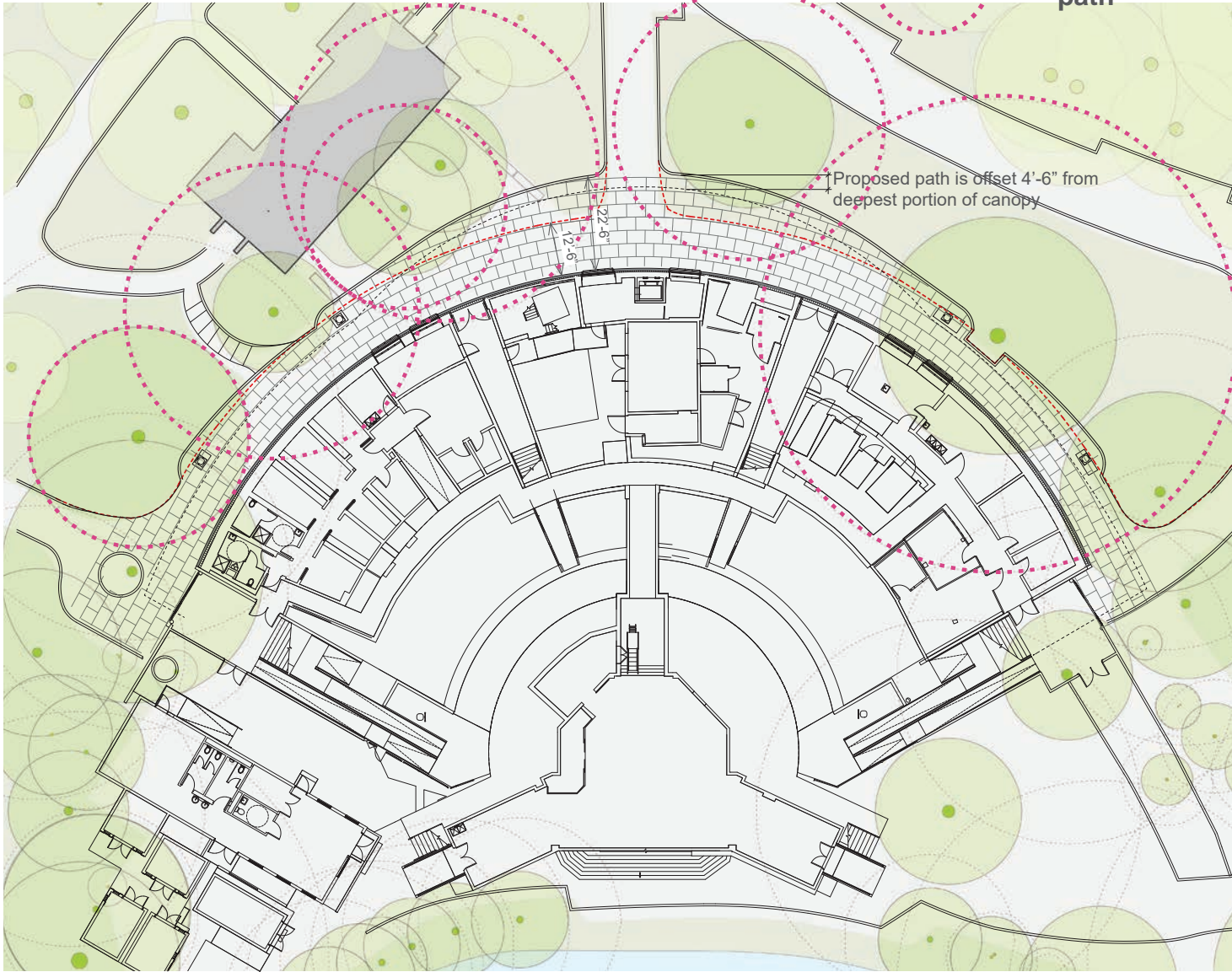


\* The dimensions of the canopy and paving will be adjusted if it is determined that they will negatively impact critical root zones of the surrounding trees. Any necessary adjustments will be consistent with what's shown in the design presentation

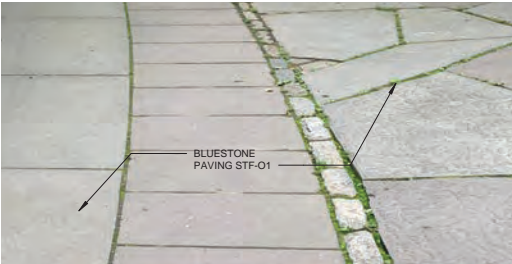
Legend  
CRZ in extended path



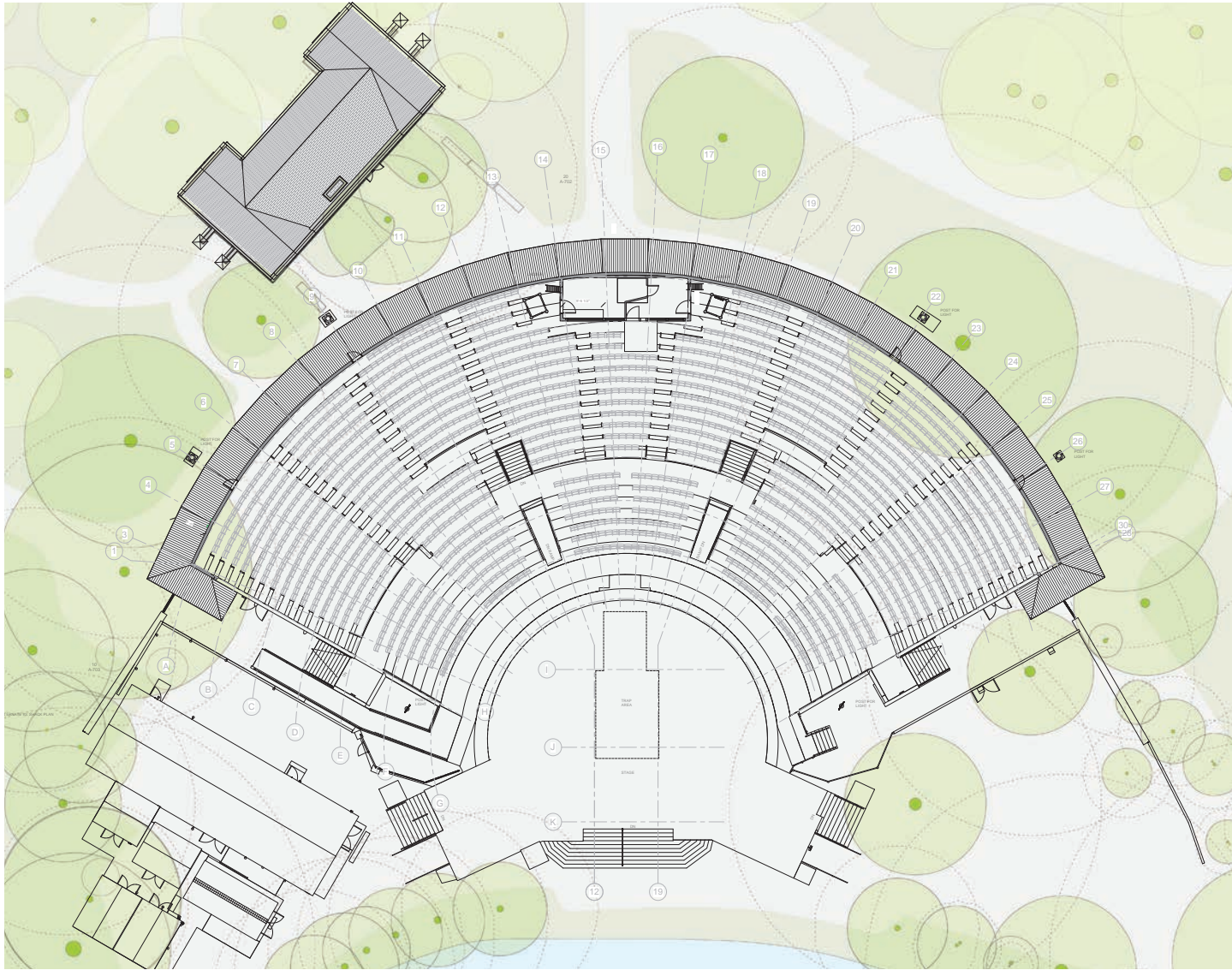
Existing Grandstand



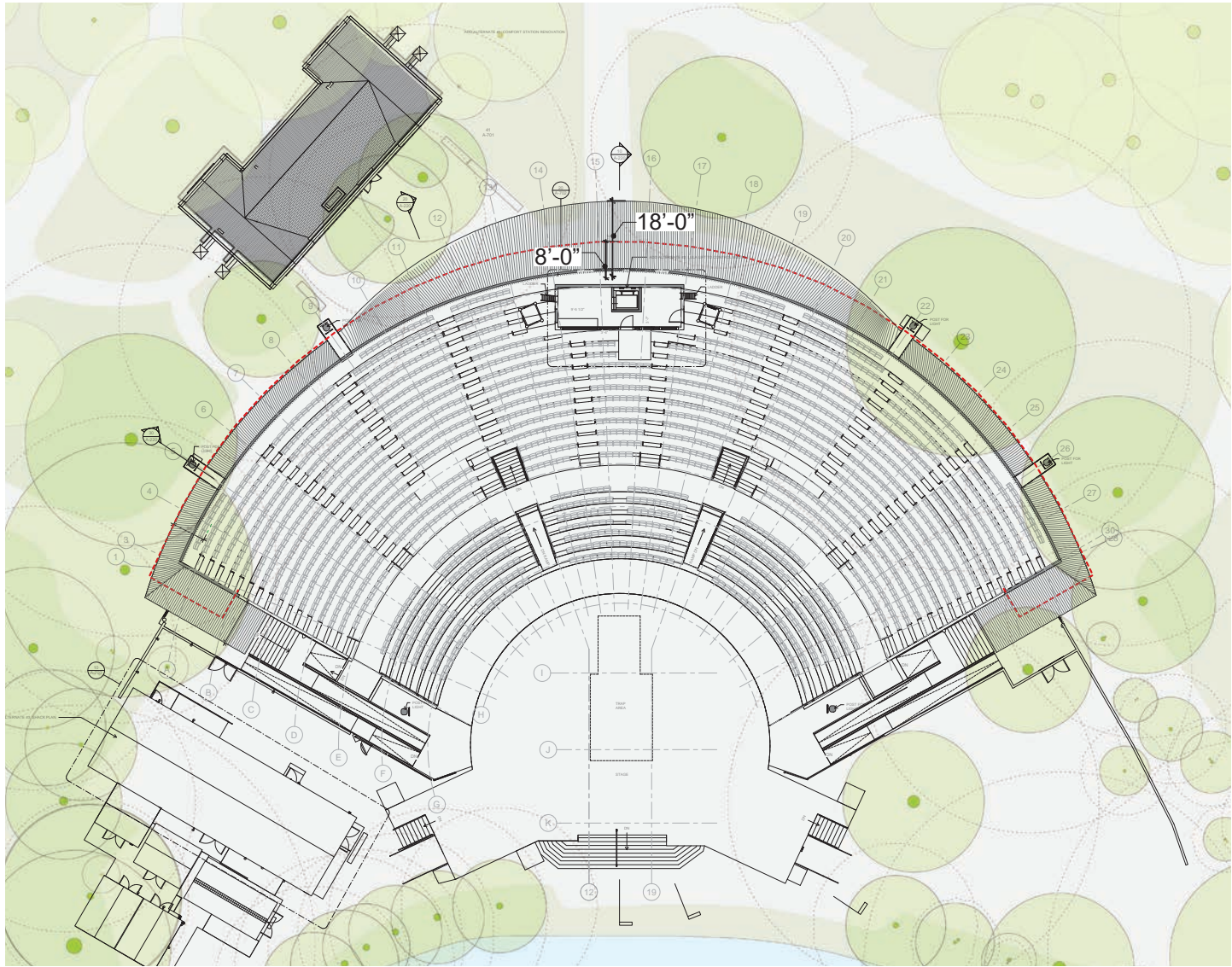
Proposed Grandstand





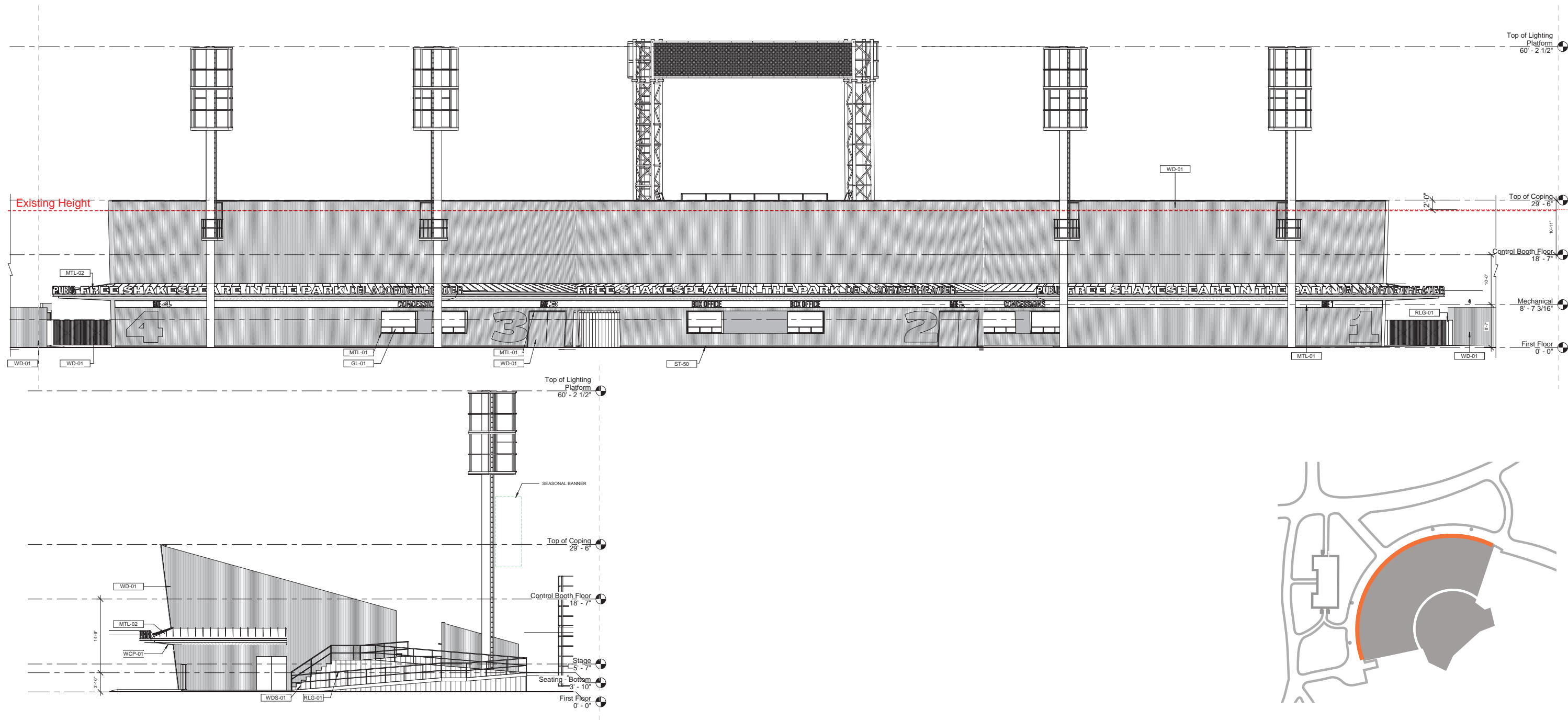


Existing Grandstand



Proposed Grandstand



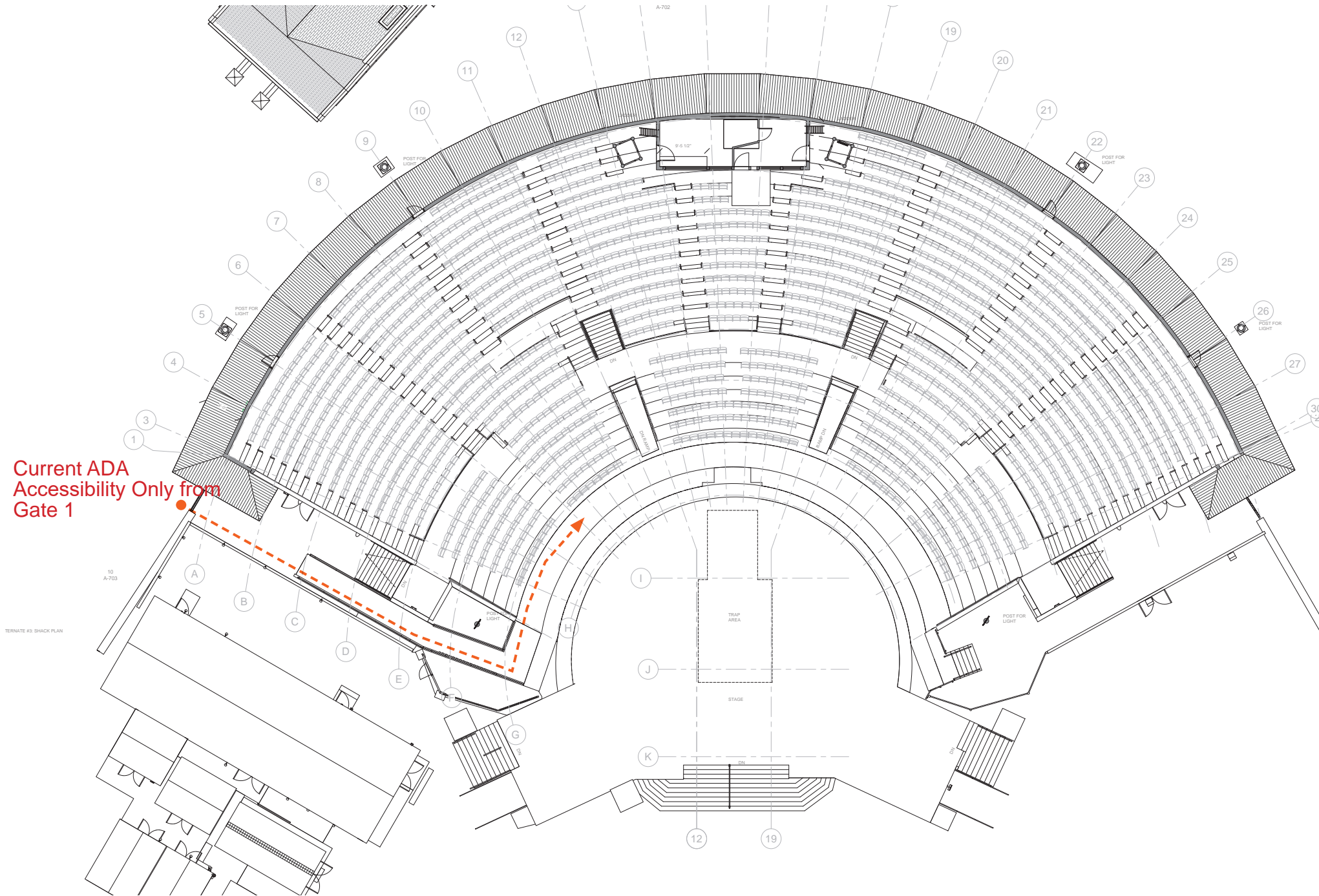




# ACCESSIBILITY







### Key

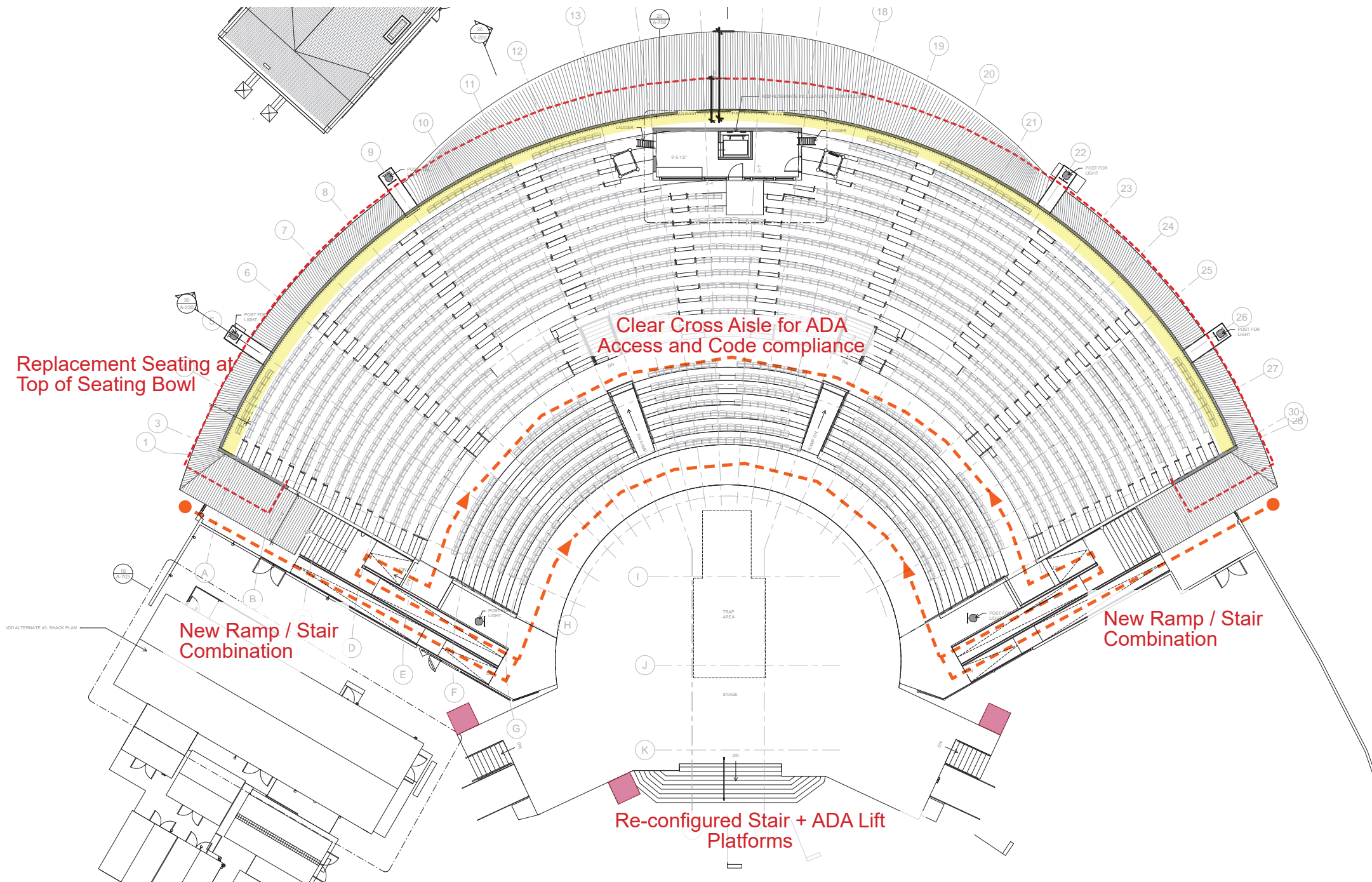
- Portable ADA Lift
- Visitors ADA path
- Relocated Seating

Existing Seats = 1887  
Existing ADA Seats = 15

- Accessible on Site
- Accessible Paths
- Inaccessible Paths

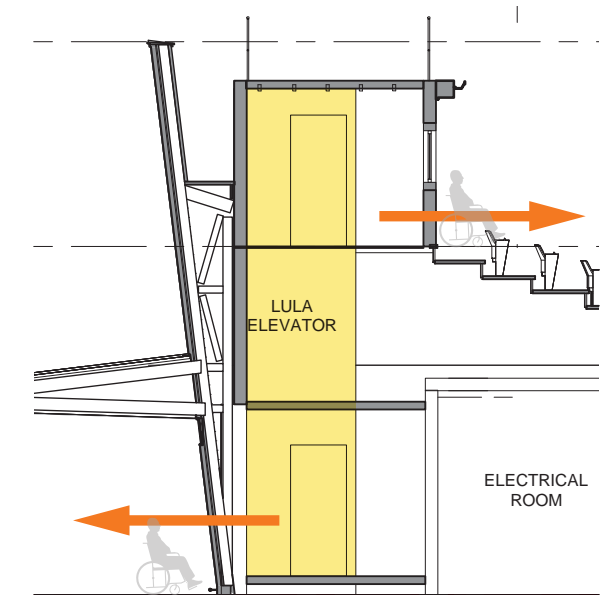




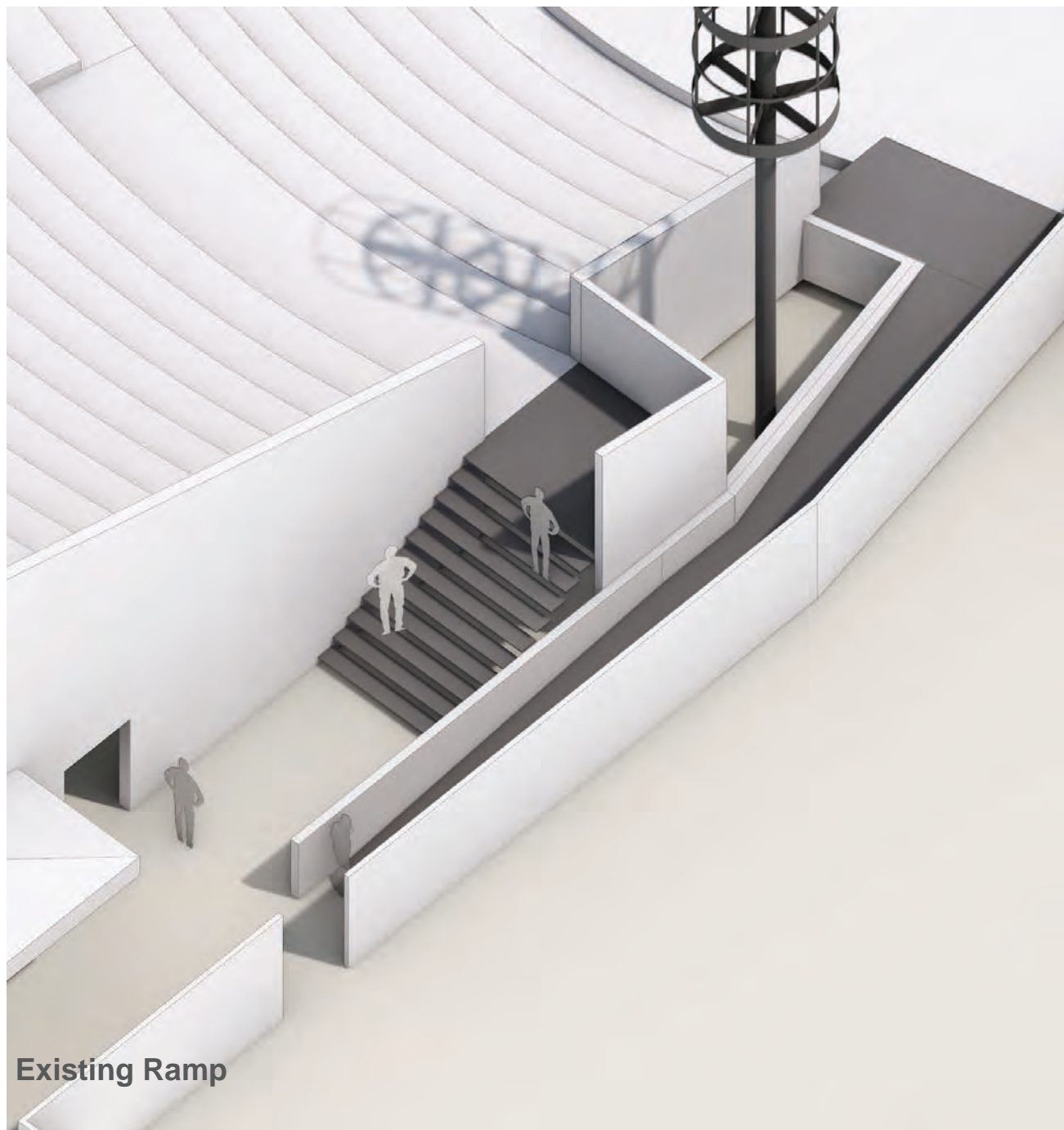


- Key**
- Concrete pads for ADA Lift
  - Visitors ADA path
  - Relocated Seating

Proposed Seats = 1820  
Proposed ADA Seats = 32







Existing Ramp



Proposed Ramp



# EXTERIOR WALL, CANOPY & SIGNAGE DETAILS



**THE PUBLIC.** ennead architects

Delacorte Theater  
Central Park







Central Park Zoo  
Signage



Bethesda Terrace  
Signage



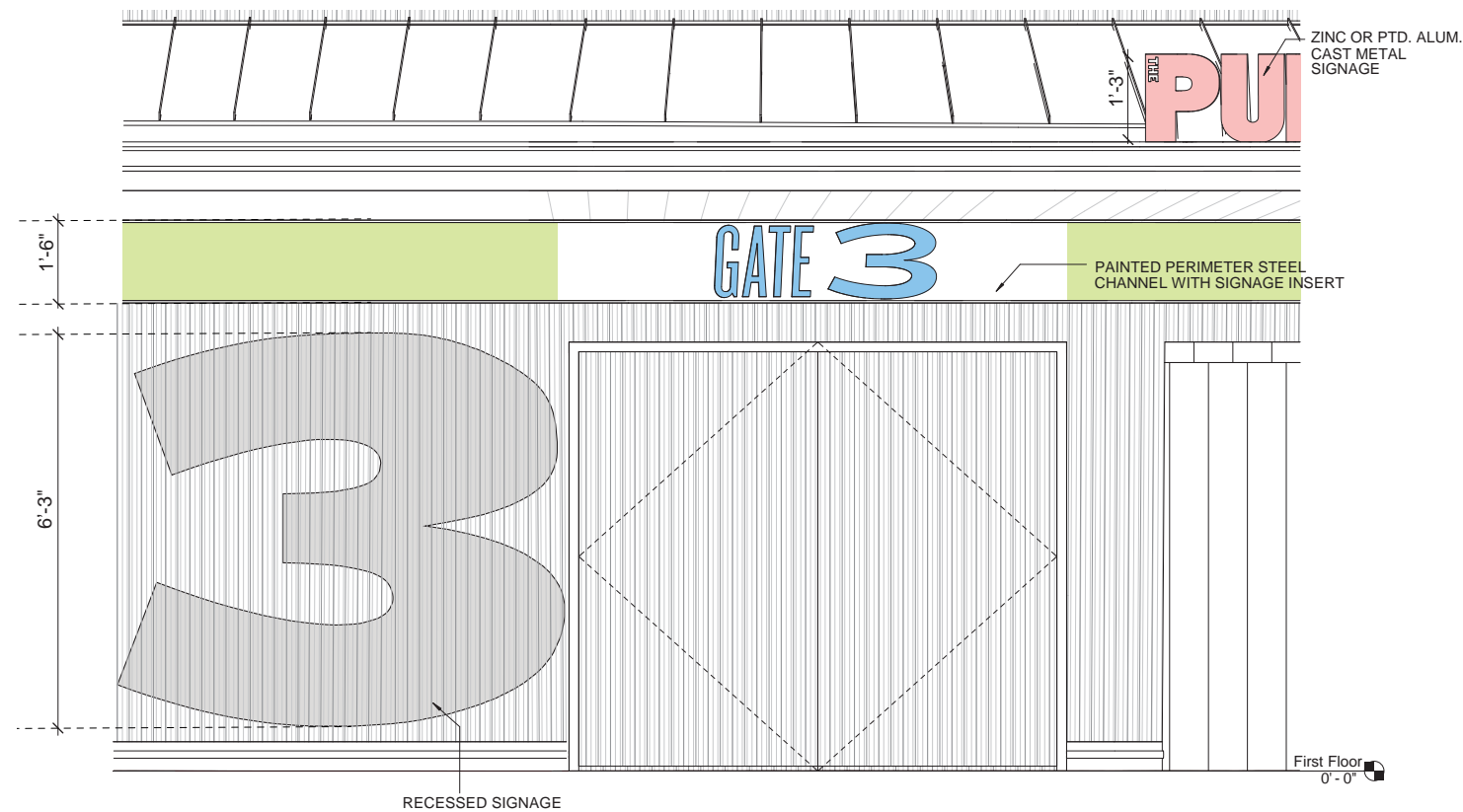
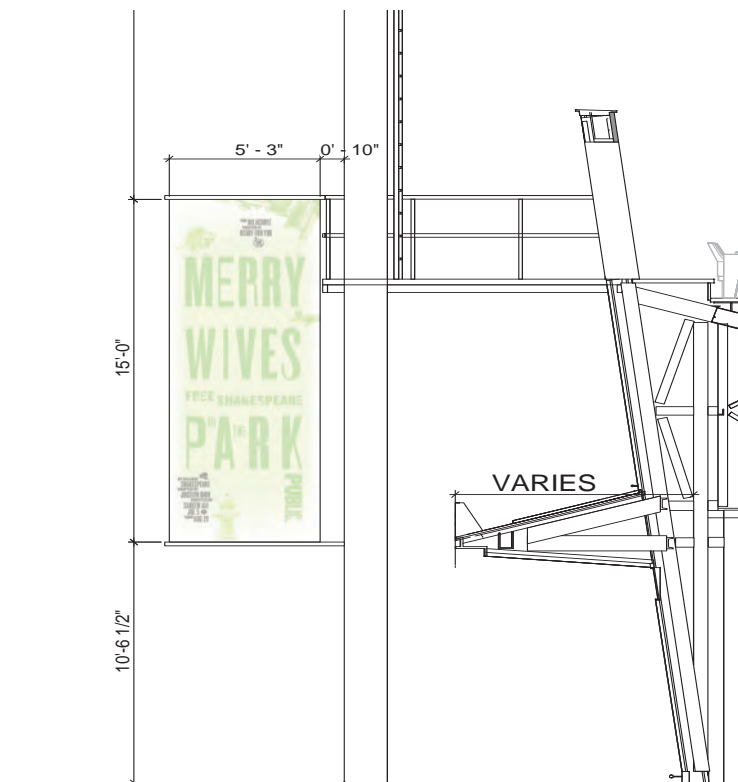
The Dairy Signage



**THE PUBLIC.** ennead architects

Delacorte Theater  
Central Park | Signage in the Park





## LEGEND

■ PERMANENT BUILDING IDENTIFICATION AND WAYFINDING SIGNAGE

■ REMOVABLE LICENSEE SIGNAGE

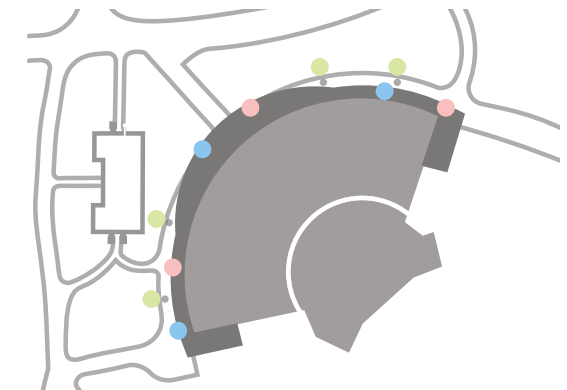
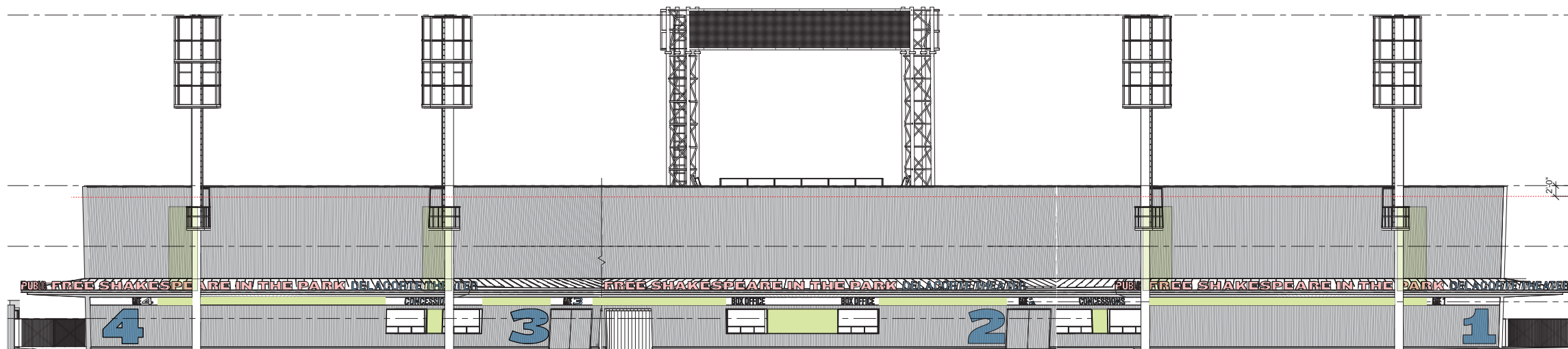
■ REMOVABLE PRODUCTION RELATED SIGNAGE (LOCATIONS FIXED BUT CONTENT WILL CHANGE)

## MATERIAL

■ PANTONE 446 C MATTE FINISH

■ BENJAMIN MOORE ATHENA 858

MATTE FINISH



**THE PUBLIC.** ennead architects

Delacorte Theater  
Central Park | Proposed Signage Types





Shakespeare In The Park 2016 (Pentagram)



Shakespeare In The Park 2018 (Pentagram)



**THE PUBLIC.** ennead architects

Delacorte Theater  
Central Park | Previous Seasonal Graphics

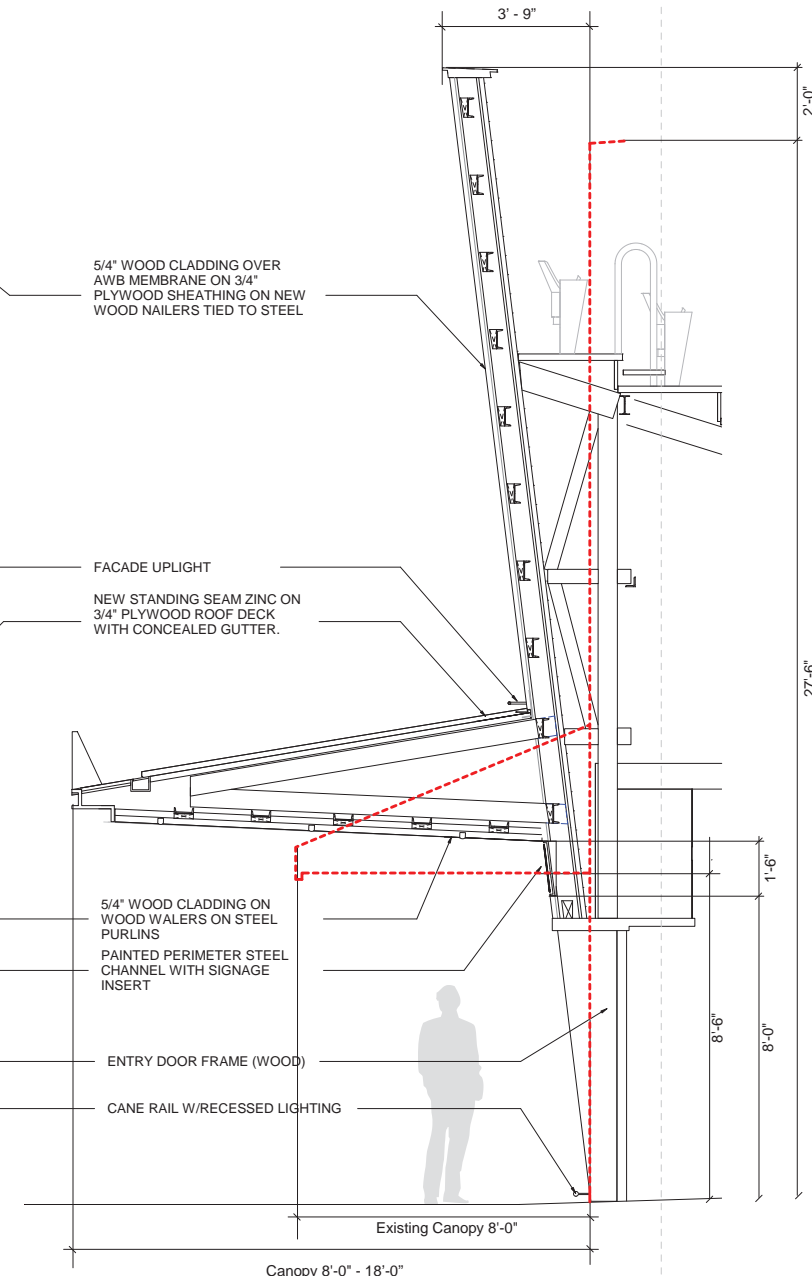
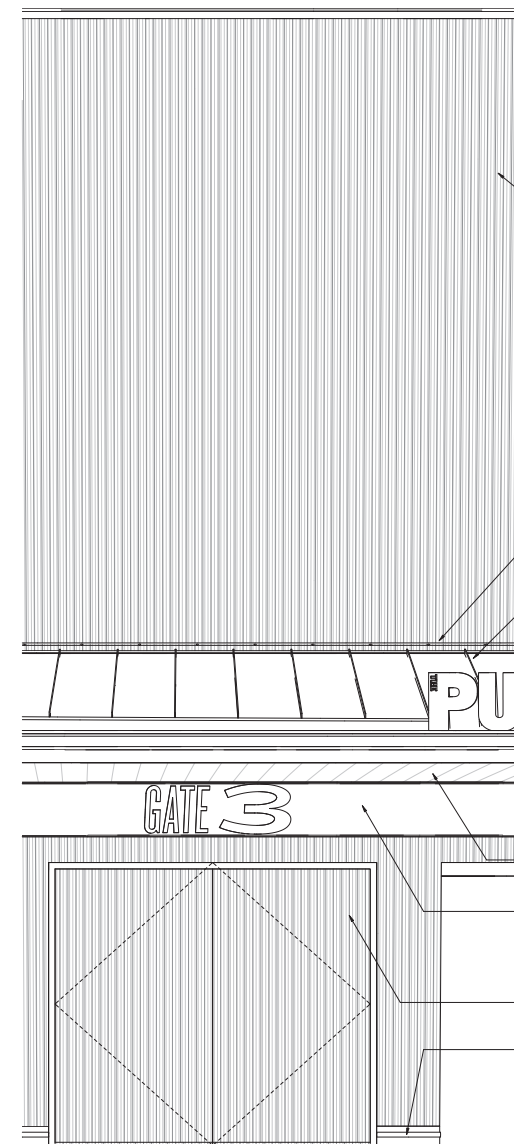
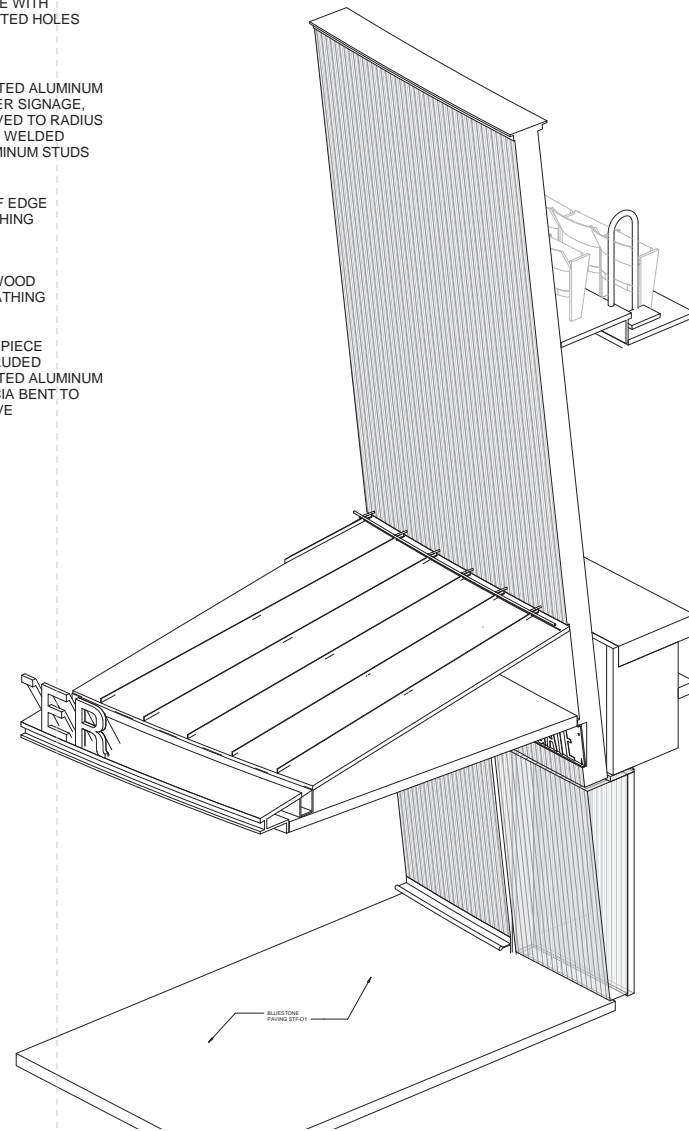
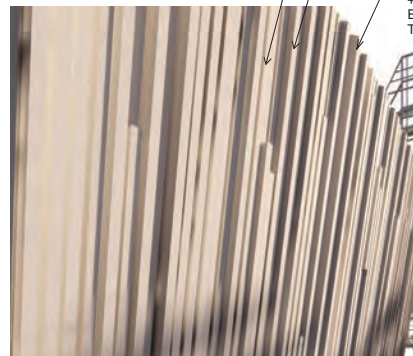
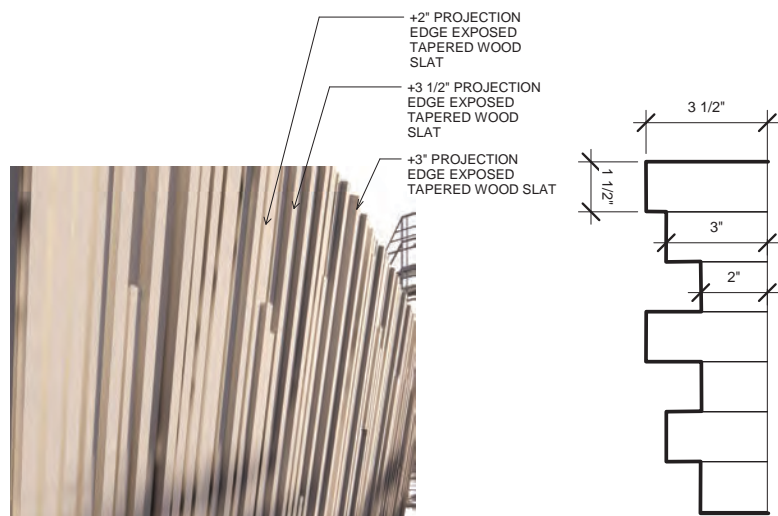
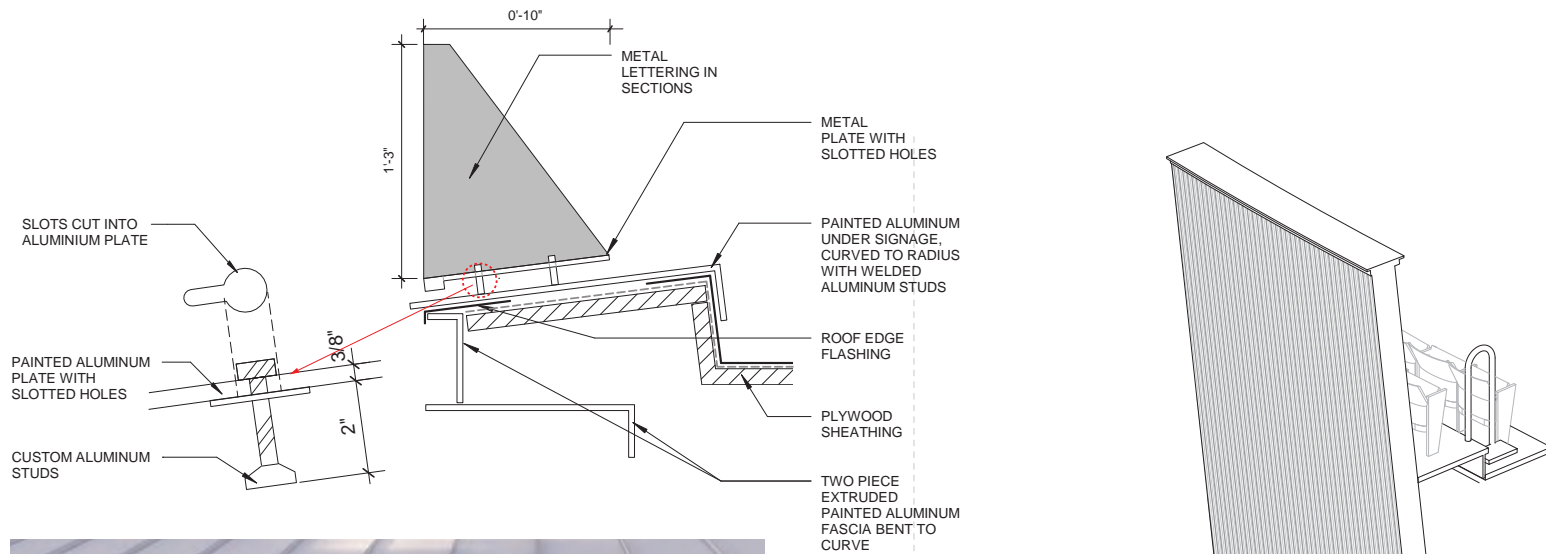




Total Proposed Signage

Permanent Signage





**THE PUBLIC.** ennead architects

**Delacorte Theater**  
**Central Park | Building Exterior Details**



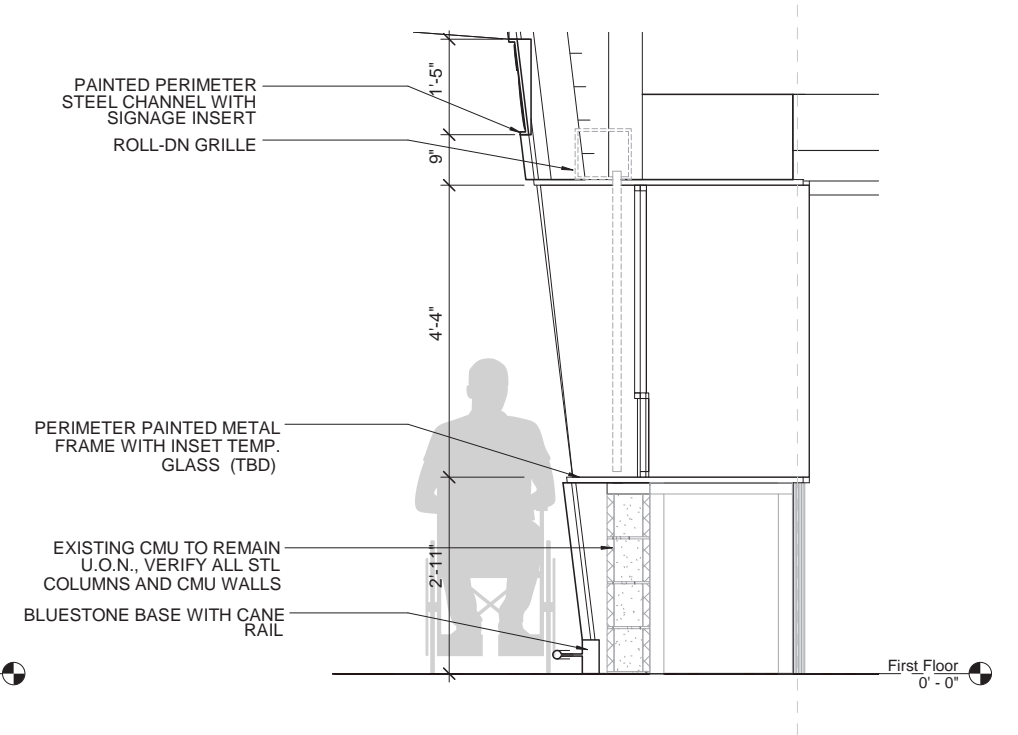
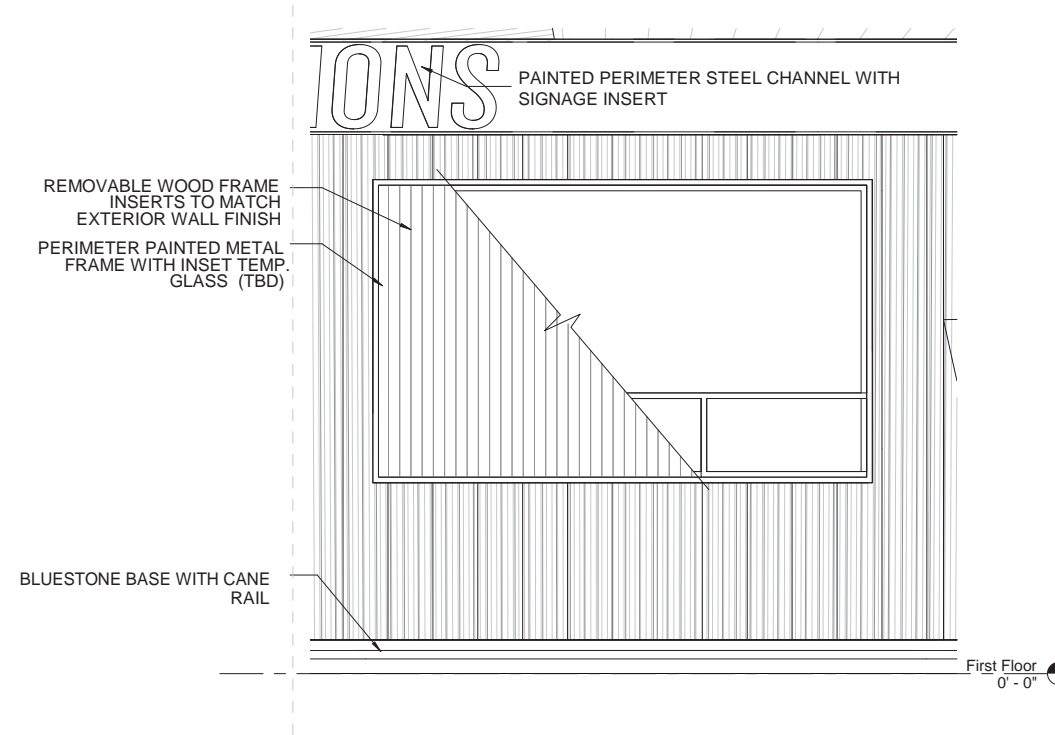
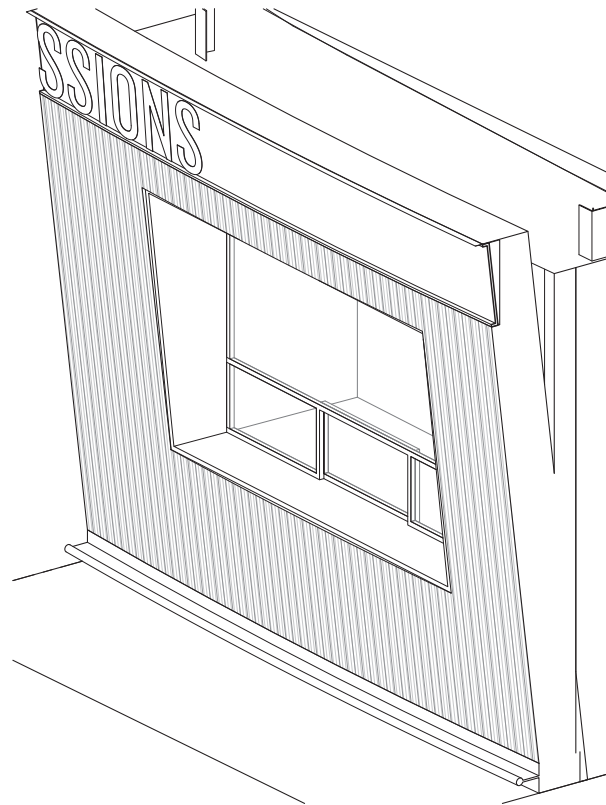
# SERVICE WINDOW



**THE PUBLIC.** ennead architects

Delacorte Theater  
Central Park





Ticket Booth Existing



Ticket Booth Off Season



Ticket Booth During Season (Day)



Ticket Booth During Season (Night)



**THE PUBLIC.** ennead architects

**Delacorte Theater**  
**Central Park** | Ticket & Concession Windows



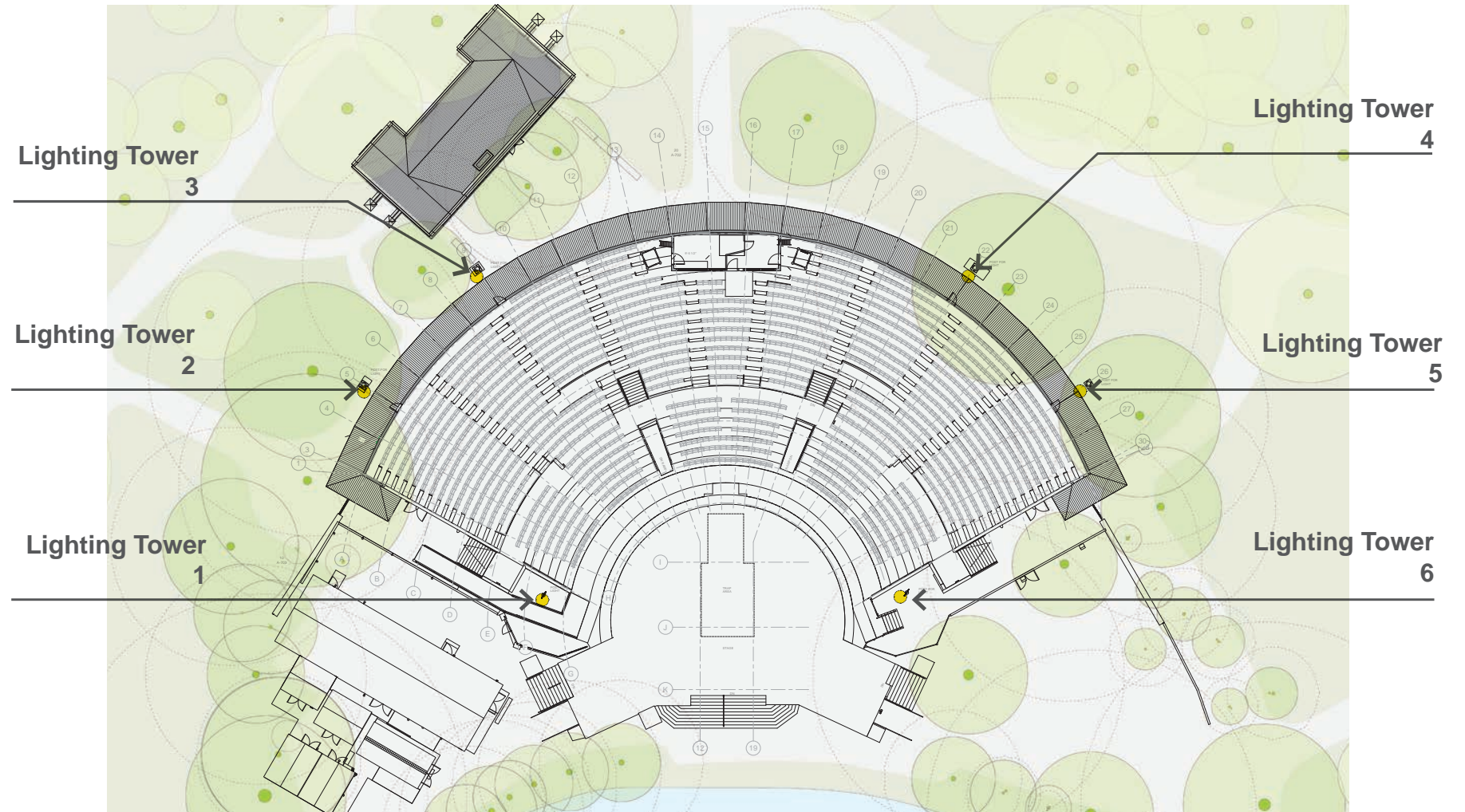
# LIGHTING TOWERS



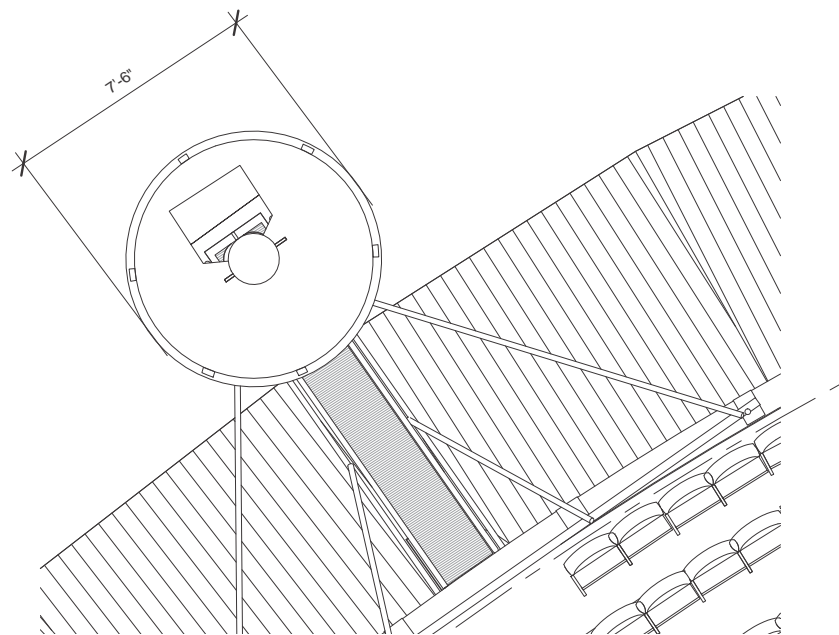
**THE PUBLIC.** ennead architects

Delacorte Theater  
Central Park

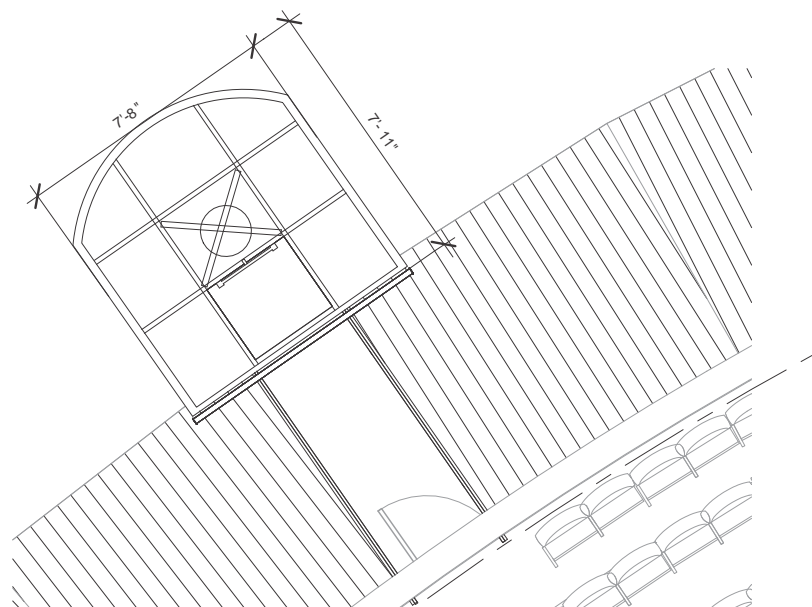






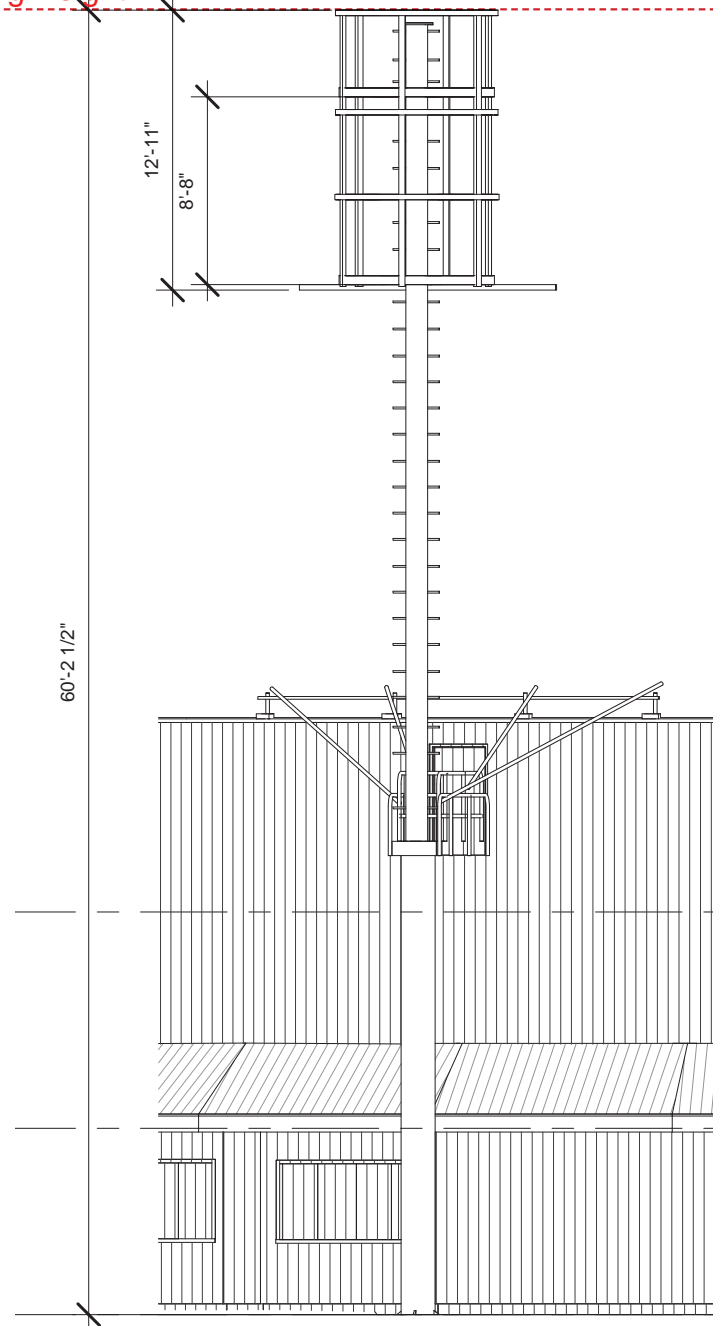


Existing Plan

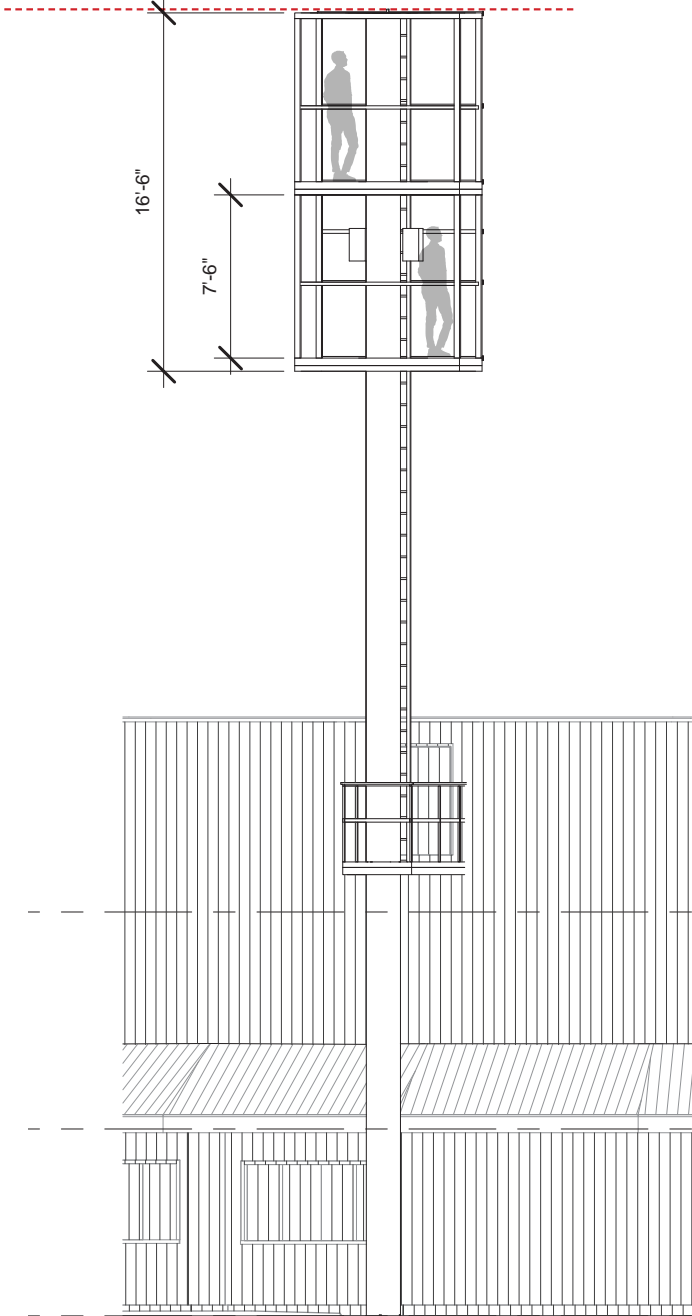


Proposed Plan

Existing Height



Existing Elevation



Proposed Section

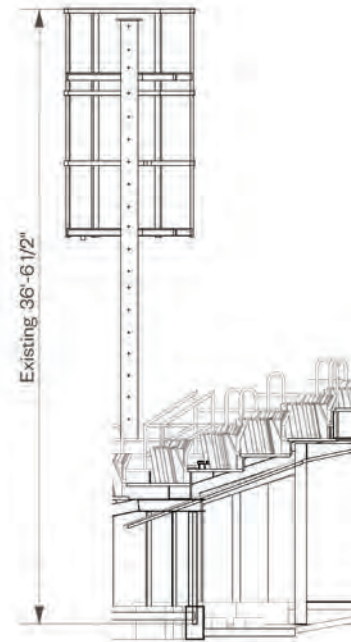


**THE PUBLIC.** ennead architects

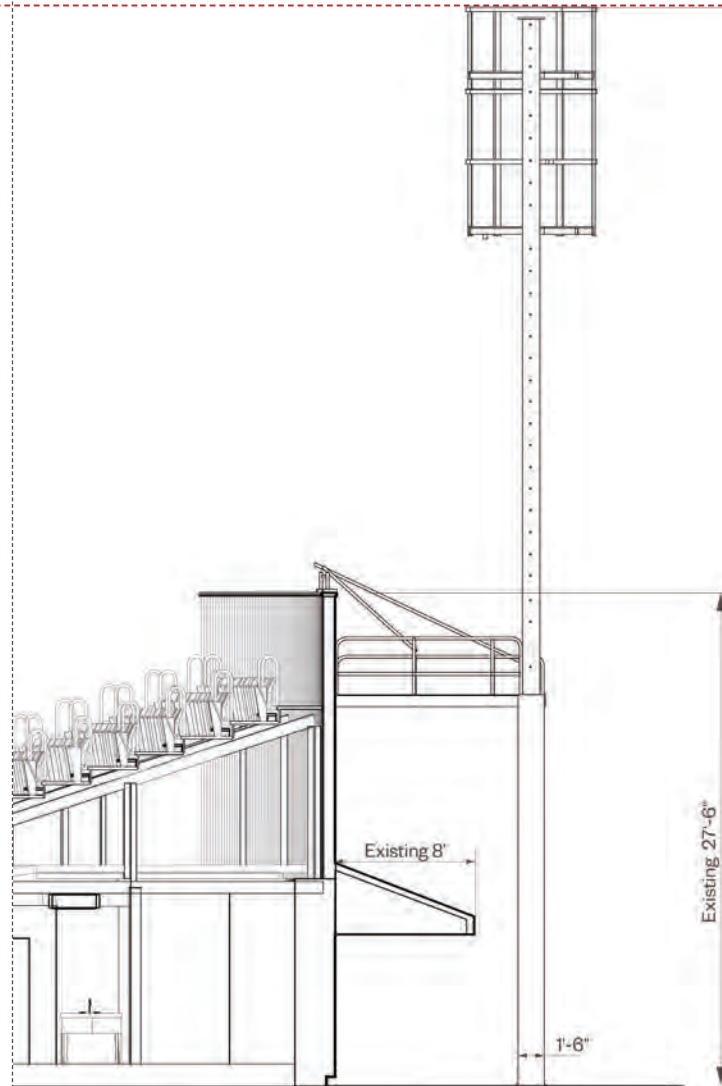
**Delacorte Theater**  
**Central Park | Lighting Towers**



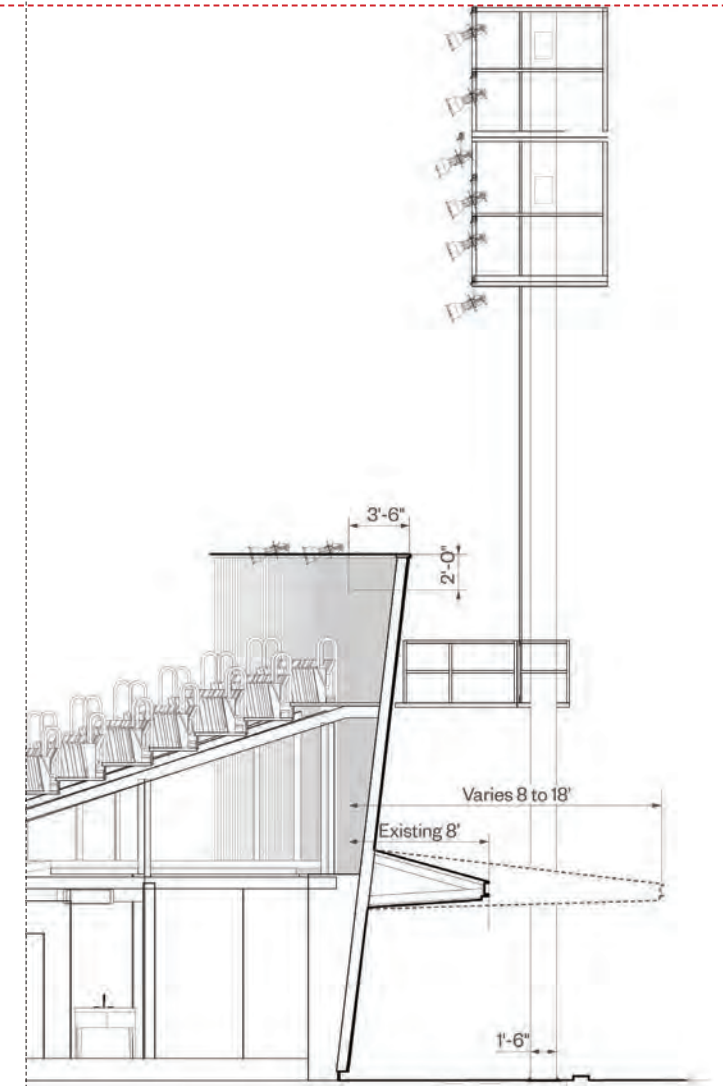
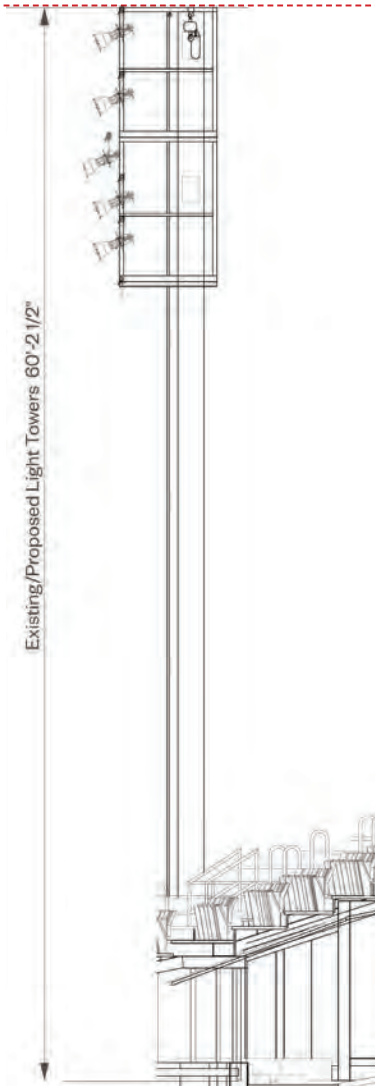
Existing Height



Existing



Proposed



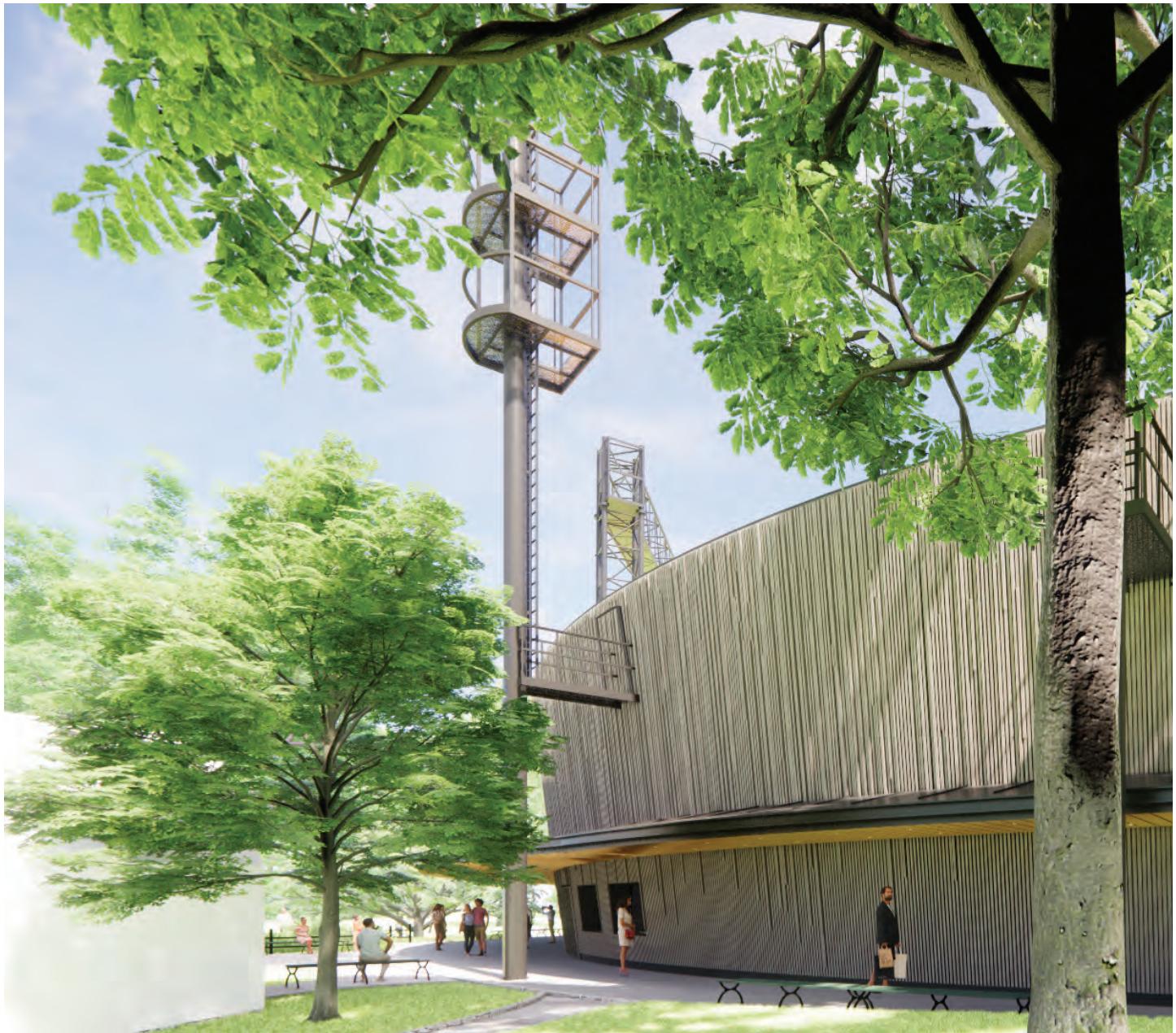
**THE PUBLIC.** ennead architects

Delacorte Theater  
Central Park | Lighting Towers 1 & 6





Existing



Proposed



**THE PUBLIC.** ennead architects

Delacorte Theater  
Central Park | Lighting Tower Details



# SEATING







Existing



Proposed (Fall)



Proposed (Summer)



**THE PUBLIC.** ennead architects

Delacorte Theater  
Central Park | Seating Details



# FENCING



**THE PUBLIC.** ennead architects

Delacorte Theater  
Central Park





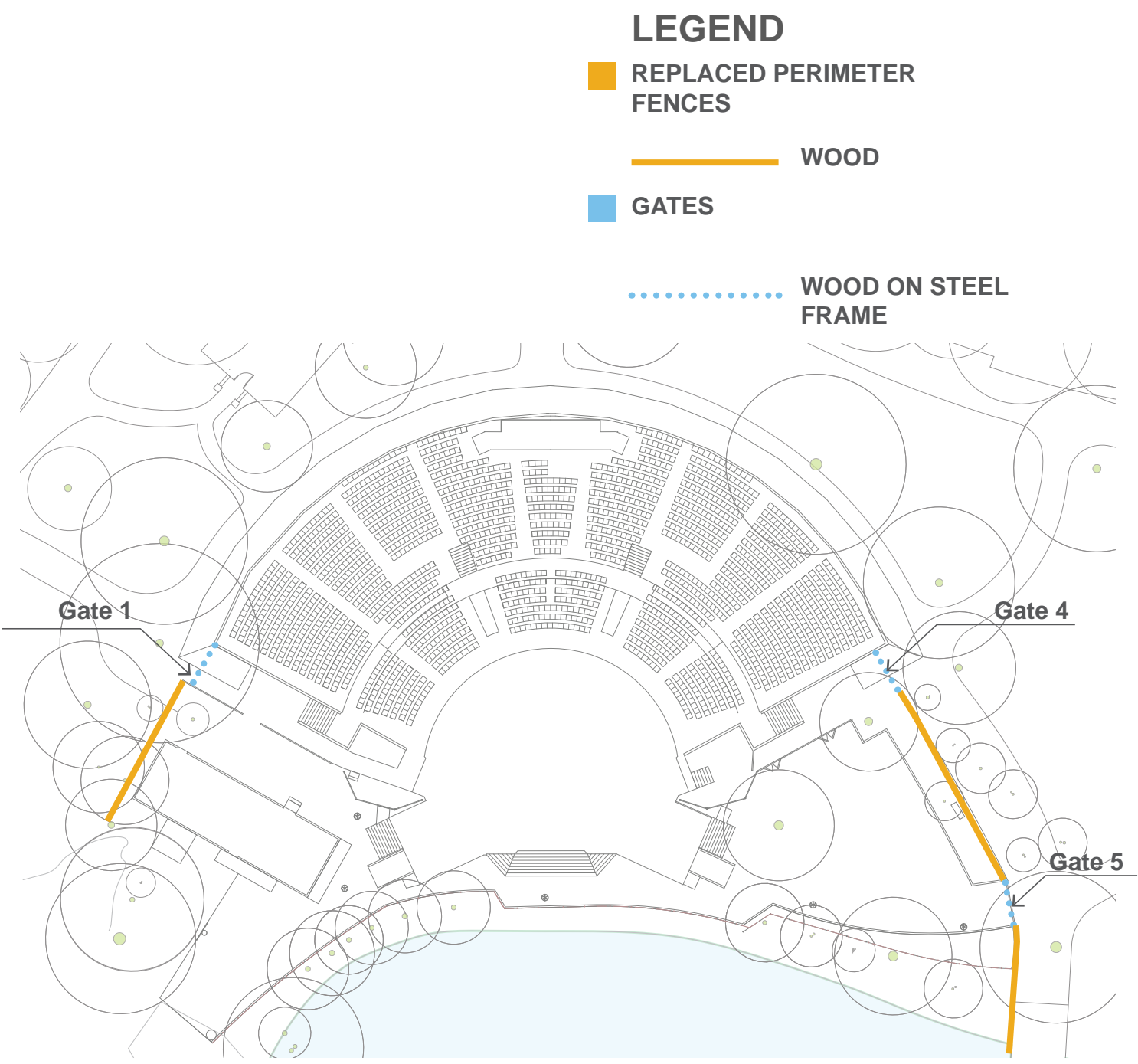
Gate 1 to the West of the Delacorte (Two overlapping fences)



Gate 4



Gate 5



**THE PUBLIC.** ennead architects

**Delacorte Theater**  
**Central Park | Existing Fencing**

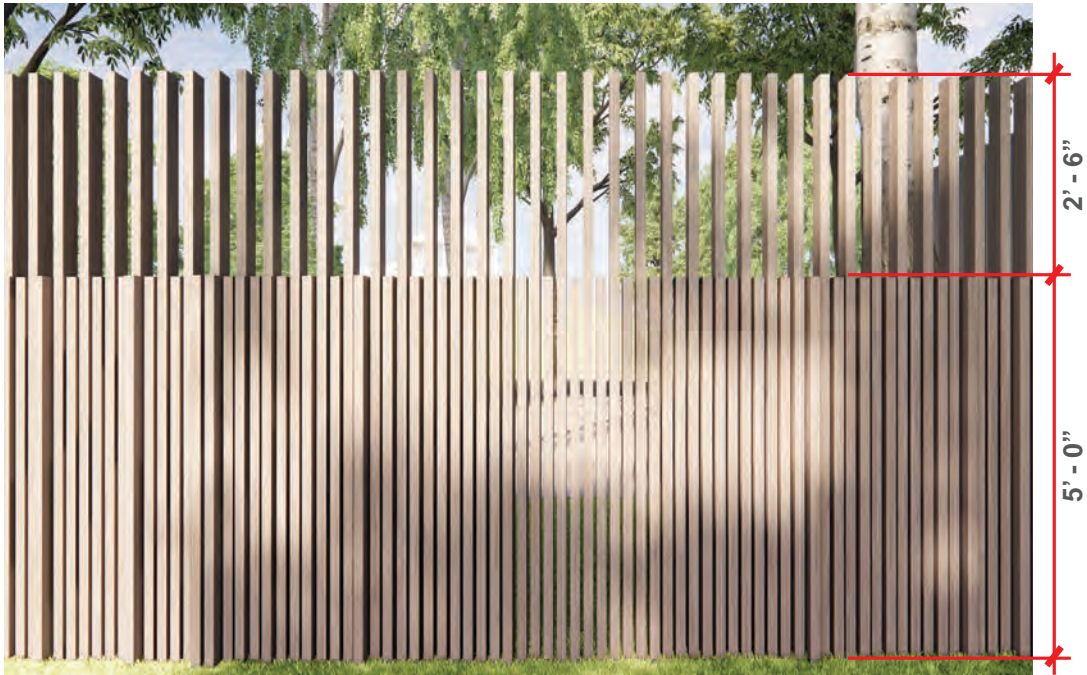




View From the Park



Existing



Proposed





Gate 1



Gate 4



**THE PUBLIC.** ennead architects

**Delacorte Theater**  
**Central Park | Proposed Gate Details**



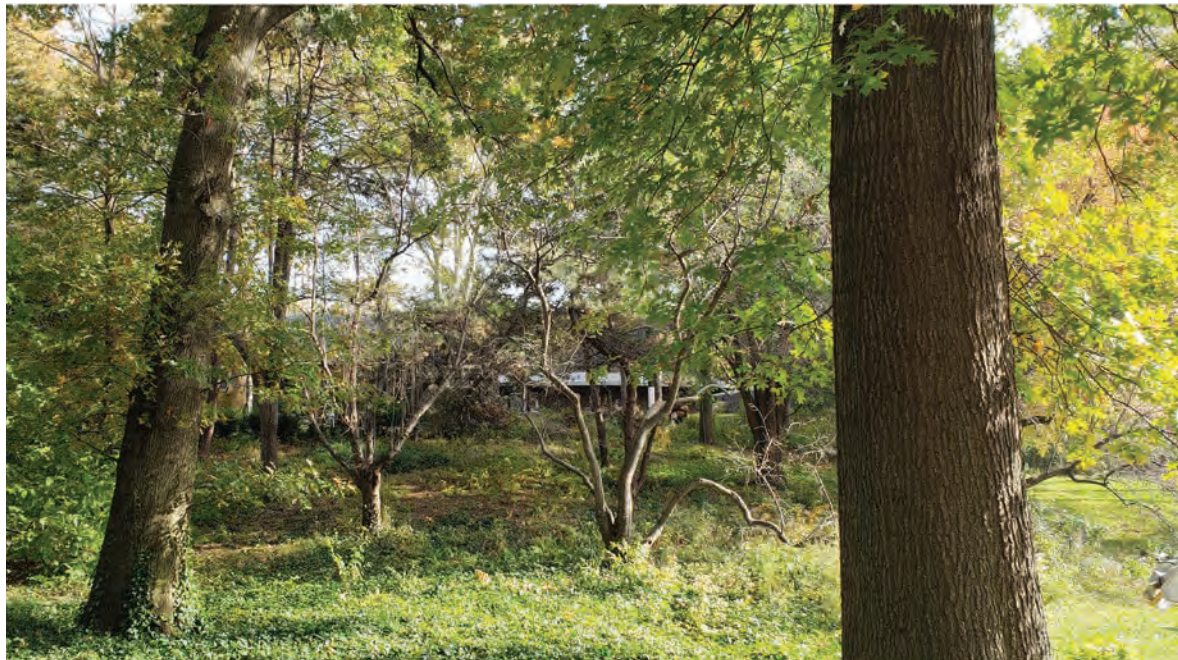
# PARK VIEWS



**THE PUBLIC.** ennead architects

Delacorte Theater  
Central Park





Existing (Summer)



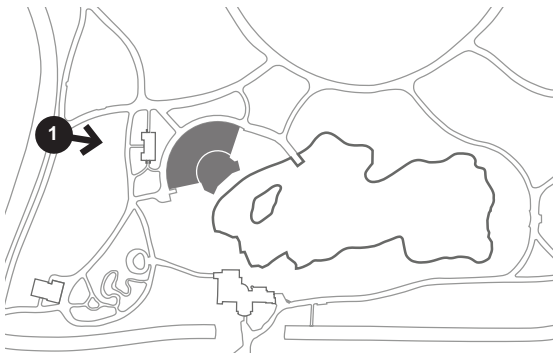
Proposed (Summer)



Existing (Winter)



Proposed (Winter)







Existing (Summer)



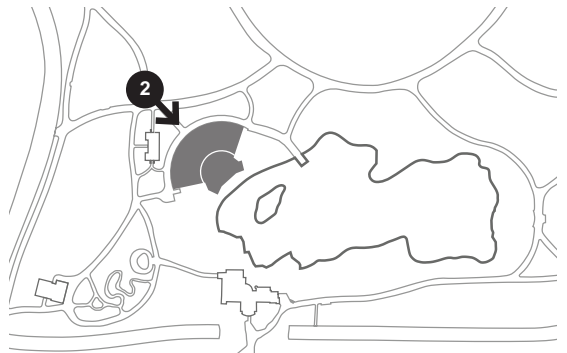
Proposed (Summer)



Existing (Winter)



Proposed (Winter)







Existing (Summer)



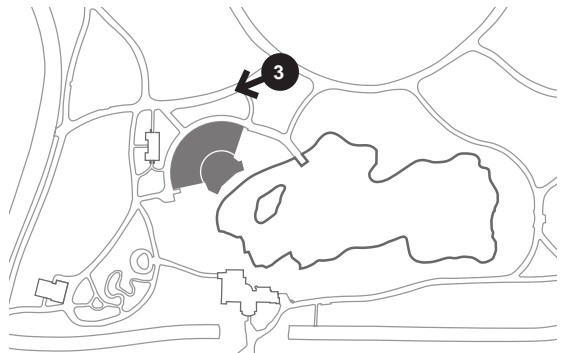
Proposed (Summer)



Existing (Winter)



Proposed (Winter)







Existing (Summer)



Proposed (Summer)



Existing (Winter)



Proposed (Winter)







Existing (Summer)



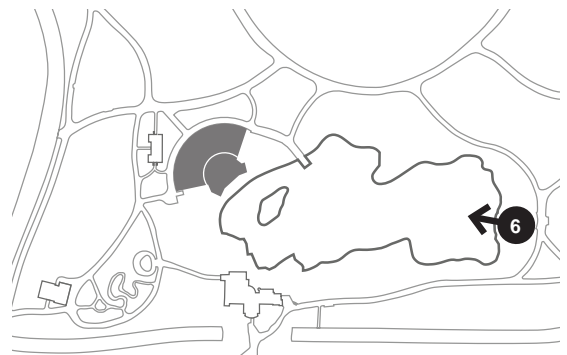
Proposed (Summer)



Existing (Winter)



Proposed (Winter)



**THE PUBLIC.** ennead architects

**Delacorte Theater**  
**Central Park** | View 5 - From King Jagiello Looking West







Existing (Summer)



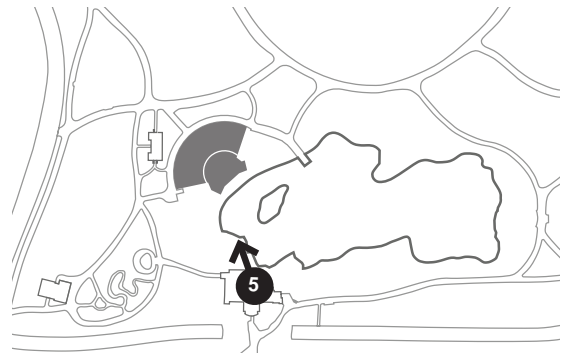
Proposed (Summer)



Existing (Fall)



Proposed (Fall)







# THE PARK DELACORTE THEATER

BOX OFFICE

BOX OFFICE

GATE 2

CONCE

MERRY WIVES  
WIVES  
WIVES





# APPENDIX



**THE PUBLIC.** ennead architects

Delacorte Theater  
Central Park



ARCHITECTURAL MATERIAL INDEX



CEDAR/REDWOOD



WEATHERED CEDAR/  
REDWOOD

- Exterior  
Cladding

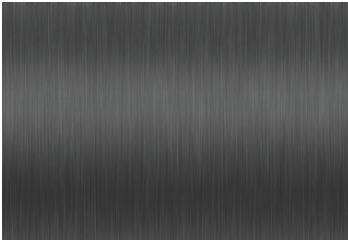


TREATED WOOD  
(KEBONY)



WEATHERED TREATED  
WOOD (KEBONY)

- Grandstand  
Decking



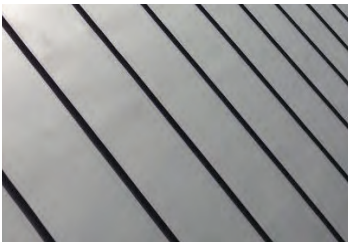
PAINTED METAL  
(CHARCOAL)



- Window/  
Door frame,  
Railings



ZINC



- Canopy

SITE



BLUESTONE

- Paving

SEATING COLOR INDEX



PANTONE 7761 C



PANTONE 1255 C



PANTONE 153 C



PANTONE 167 C



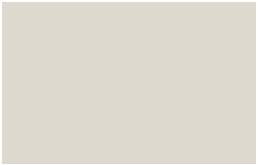
PANTONE 7747 C

SIGNAGE MATERIAL INDEX



PANTONE 446 C  
MATTE FINISH

- Permanent  
Above Canopy  
Signage



BENJAMIN MOORE  
ATHENA 858 MATTE FINISH

- Removable  
Licensee  
Signage



PAINTED METAL  
(CHARCOAL)

- Signage  
Channel  
below Canopy







15" Above Canopy Signage

\*Length of each group of letters above canopy is approximately 65' long



18" Above Canopy Signage

\*Length of each group of letters above canopy is approximately 80' long





15" Above Canopy Signage

\*Length of each group of letters above canopy is approximately 65' long



18" Above Canopy Signage

\*Length of each group of letters above canopy is approximately 80' long





\*Length of each group of letters above canopy is approximately 80' long



**THE PUBLIC.** ennead architects

**Delacorte Theater**  
**Central Park | Building Signage 18"**





\*Length of each group of letters above canopy is approximately 65' long



**THE PUBLIC.** ennead architects

**Delacorte Theater**  
**Central Park | Building Signage 15"**





\*Length of each group of letters above canopy is approximately 80' long



**THE PUBLIC.** ennead architects

**Delacorte Theater**  
**Central Park | Building Signage 18"**





\*Length of each group of letters above canopy is approximately 65' long



**THE PUBLIC.** ennead architects

**Delacorte Theater**  
**Central Park | Building Signage 15"**



January 25<sup>th</sup>, 2022  
Public Hearing

The current proposal is:

Preservation Department – Item 5, LPC-22-04971

## Central Park – Delacorte Theatre – Scenic Landmark Borough of Manhattan

To Testify Please Join Zoom

**Webinar ID:** 822 8982 9092

**Passcode:** 003928

By Phone: 1 646-558-8656 US (New York)

877-853-5257 (Toll free) US

888 475 4499 (Toll free)

**Note:** If you want to testify on an item, join the Zoom webinar at the agenda's "Be Here by" time (about an hour in advance). When the Chair indicates it's time to testify, "raise your hand" via the Zoom app if you want to speak (\*9 on the phone). Those who signed up in advance will be called first.