

**September 28th, 2021**  
Public Hearing

The current proposal is:

**Preservation Department – Item 3, LPC-22-01500**

**275 Mulberry Street - The Puck Building - Individual Landmark**  
**Borough of Manhattan**

**To Testify Please Join Zoom**

**Webinar ID: 847 6405 0416**

**Passcode: 421296**

By Phone:

1 646-558-8656

US (New York) 877-853-5257 (Toll free)

US 888 475 4499 (Toll free)

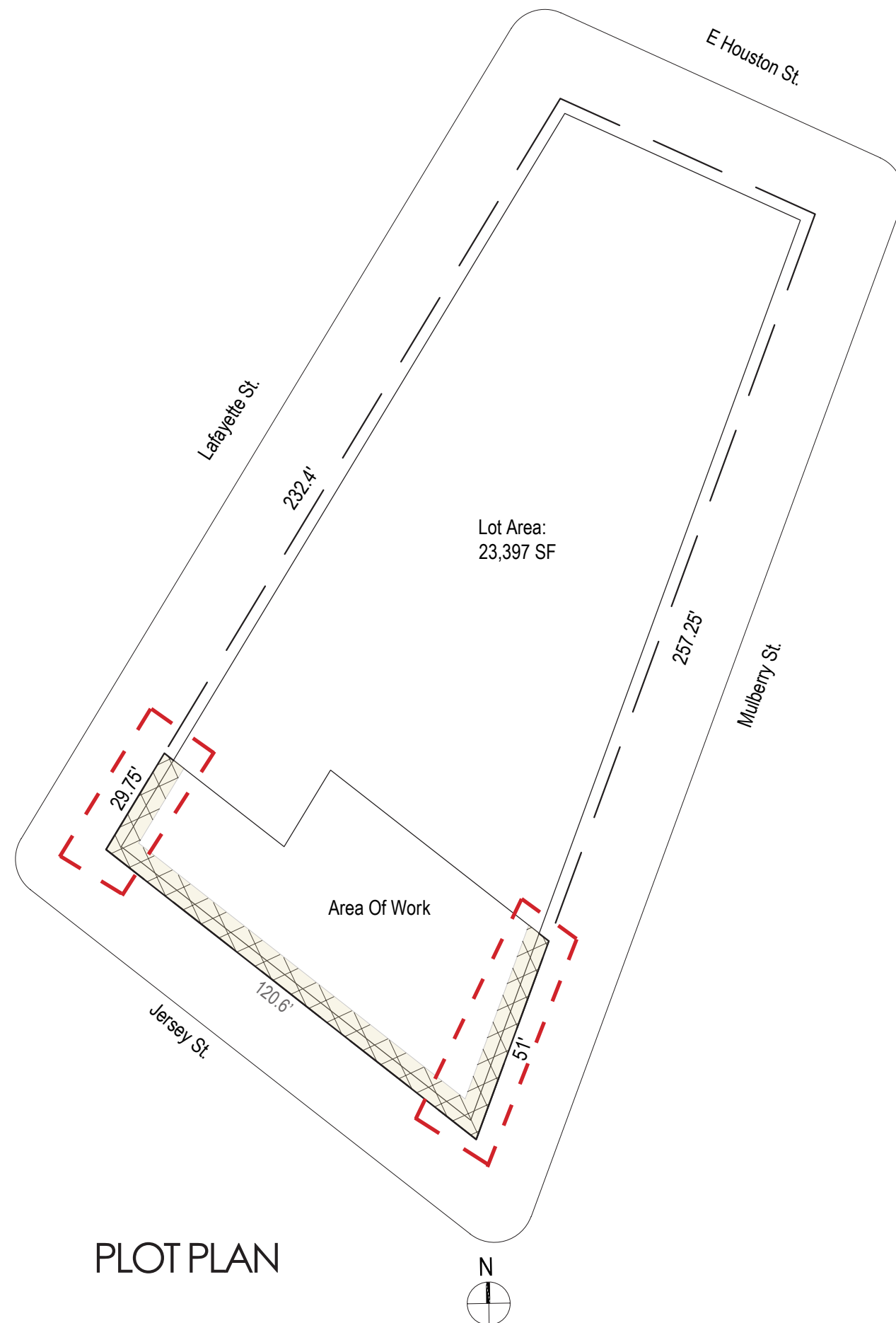
**Note:** If you want to testify on an item, join the Zoom webinar at the agenda's "Be Here by" time (about an hour in advance). When the Chair indicates it's time to testify, "raise your hand" via the Zoom app if you want to speak (\*9 on the phone). Those who signed up in advance will be called first.

# TORRISI

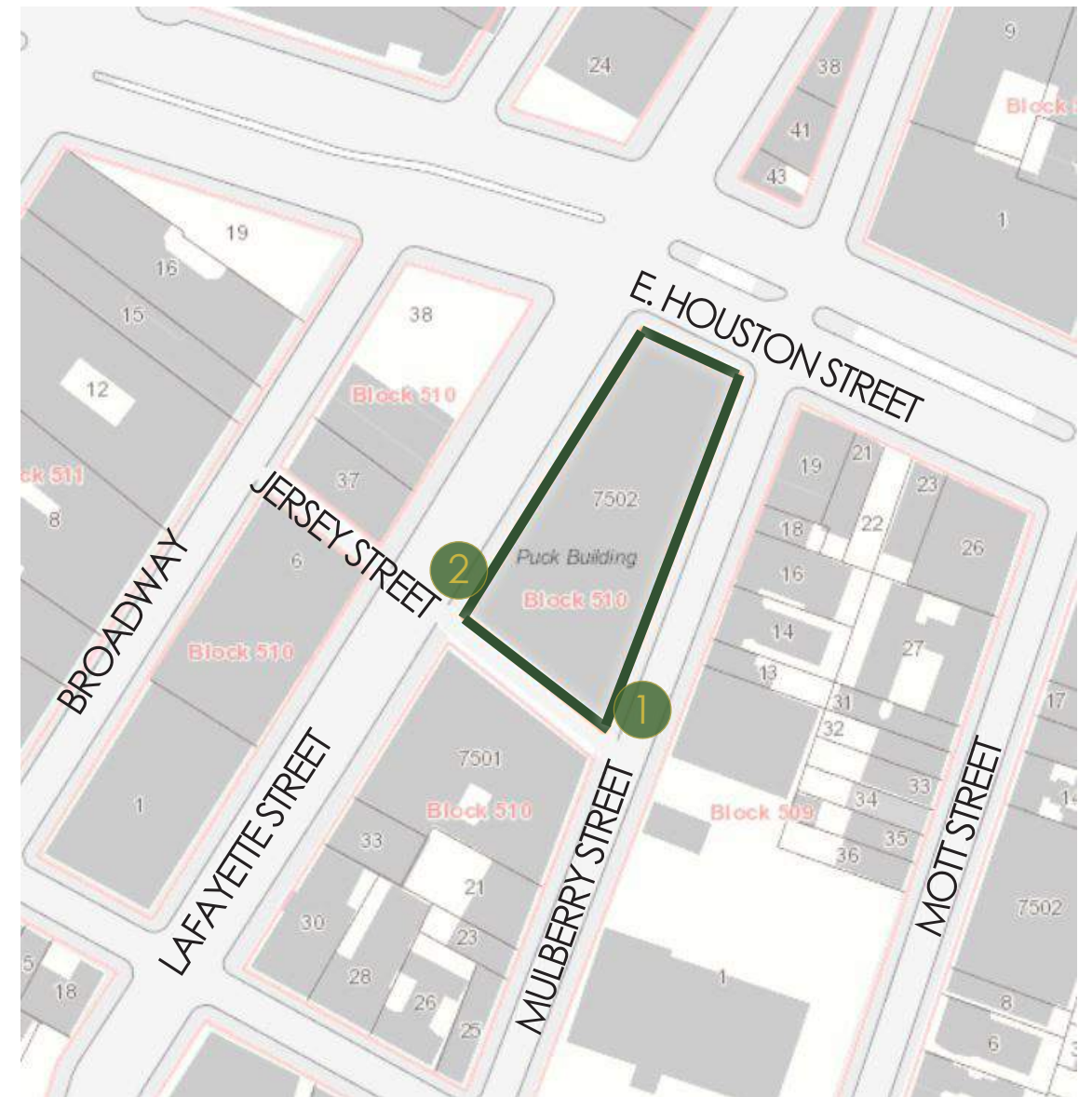
ITALIAN SPECIALTIES

PUCK BUILDING  
275 MULBERRY STREET  
NYC

LANDMARKS PRESERVATION SUBMISSION  
AWNING, FLAGPOLE & BANNER, INTERIOR VITRINES  
9.28.21



PLOT PLAN



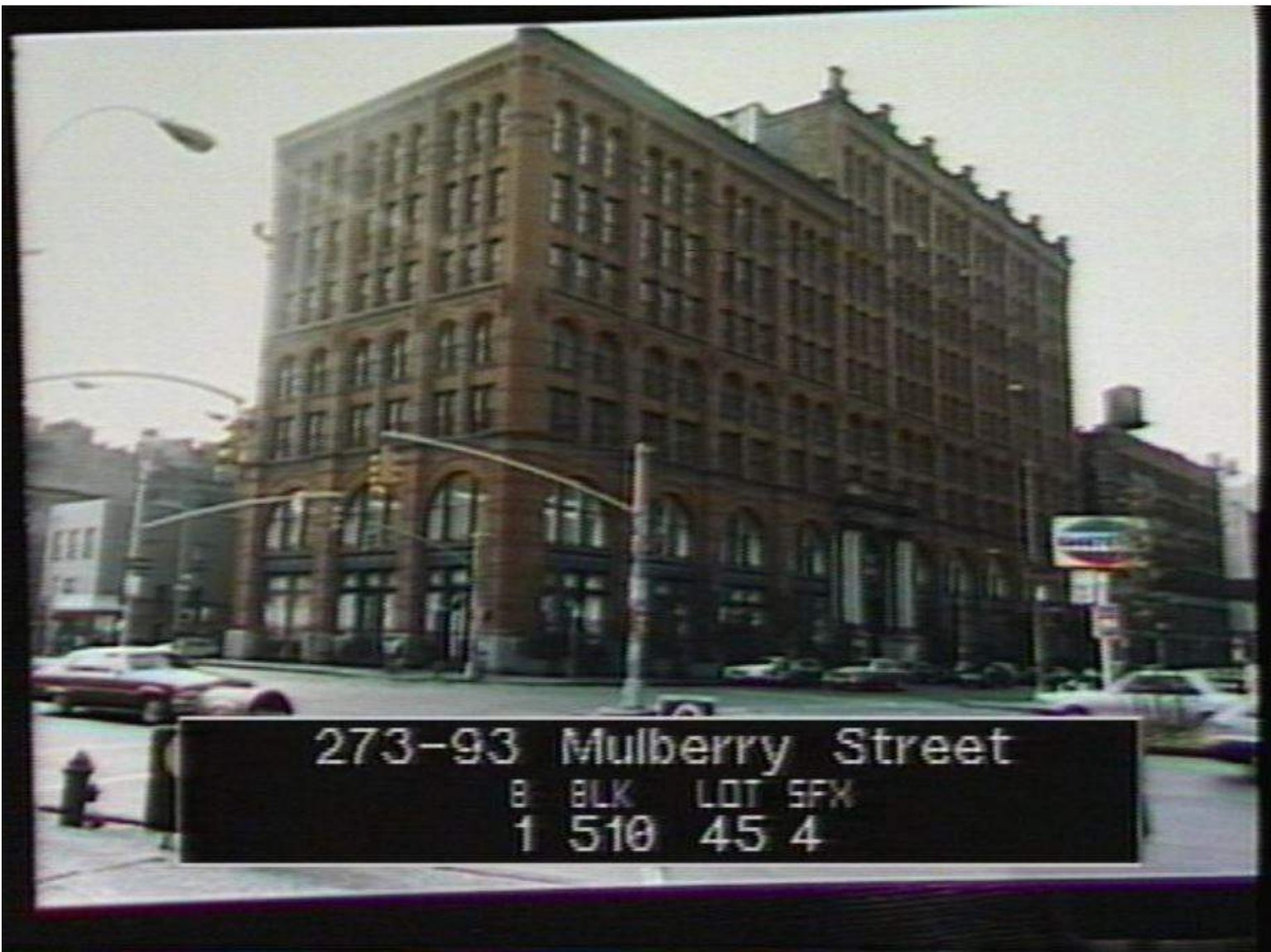
- 1 AWNING SIGN
- 2 FLAGPOLE & BANNER SIGN  
WINDOW VITRINE

## SITE PLAN AND CONTEXT





E. HOUSTON & MULBERRY



LAFAYETTE STREET



MULBERRY STREET





ENLARGED VIEW OF AWNING, MULBERRY STREET,  
1939-1941



284 MULBERRY STREET (ACROSS FROM PUCK BUILDING), 1939-  
1941





SUPERIOR PRINTING INK CO.



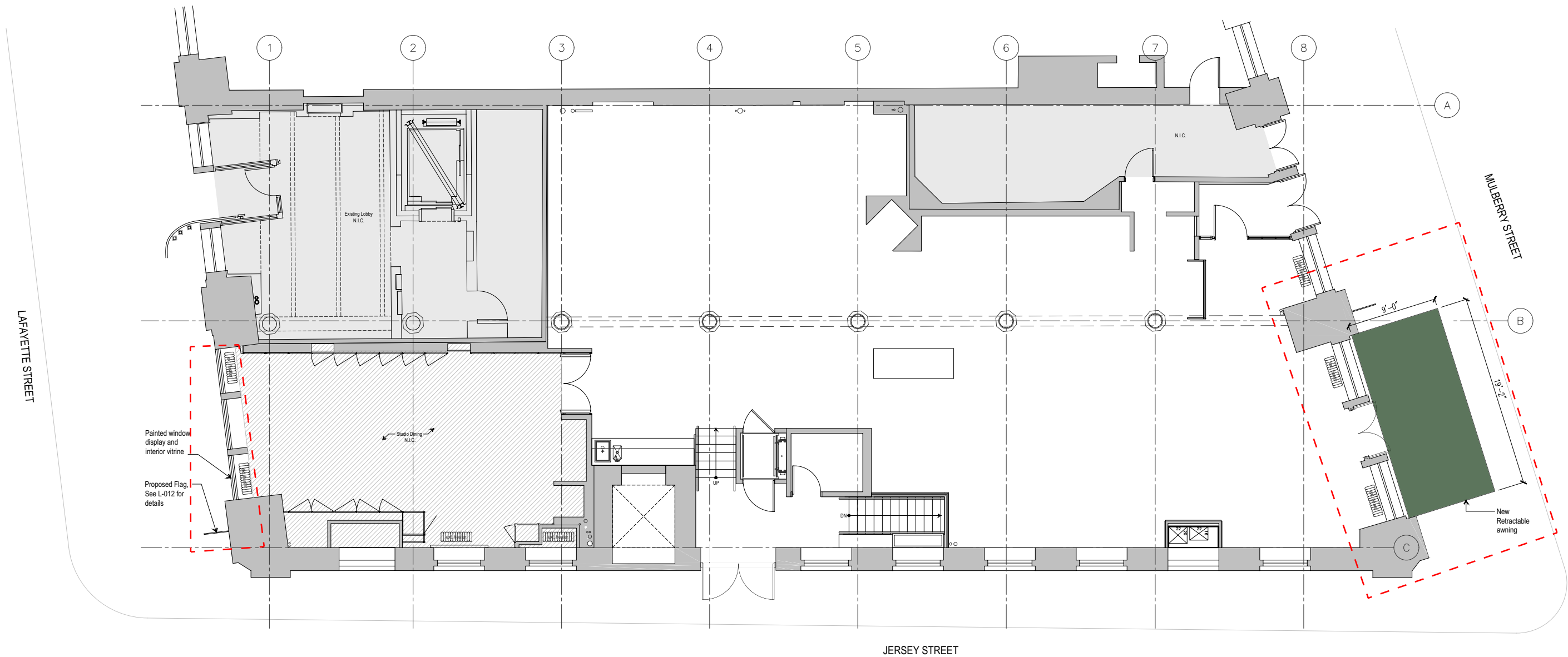


E. HOUSTON AND MULBERRY, 1939-1941



E. HOUSTON AND LAFAYETTE, 1983

SUPERIOR PRINTING INK CO.



01 | Proposed Plan  
Scale: 3/16" = 1'-0"





MULBERRY STREET



LAFAYETTE STREET





## EXISTING CONDITIONS: 275 MULBERRY STREET (CORNER OF MULBERRY AND JERSEY STREETS)





PROPOSED: 275 MULBERRY STREET (CORNER OF MULBERRY AND JERSEY STREETS)





EXISTING CONDITIONS: 275 MULBERRY STREET (CORNER OF MULBERRY AND JERSEY STREETS)

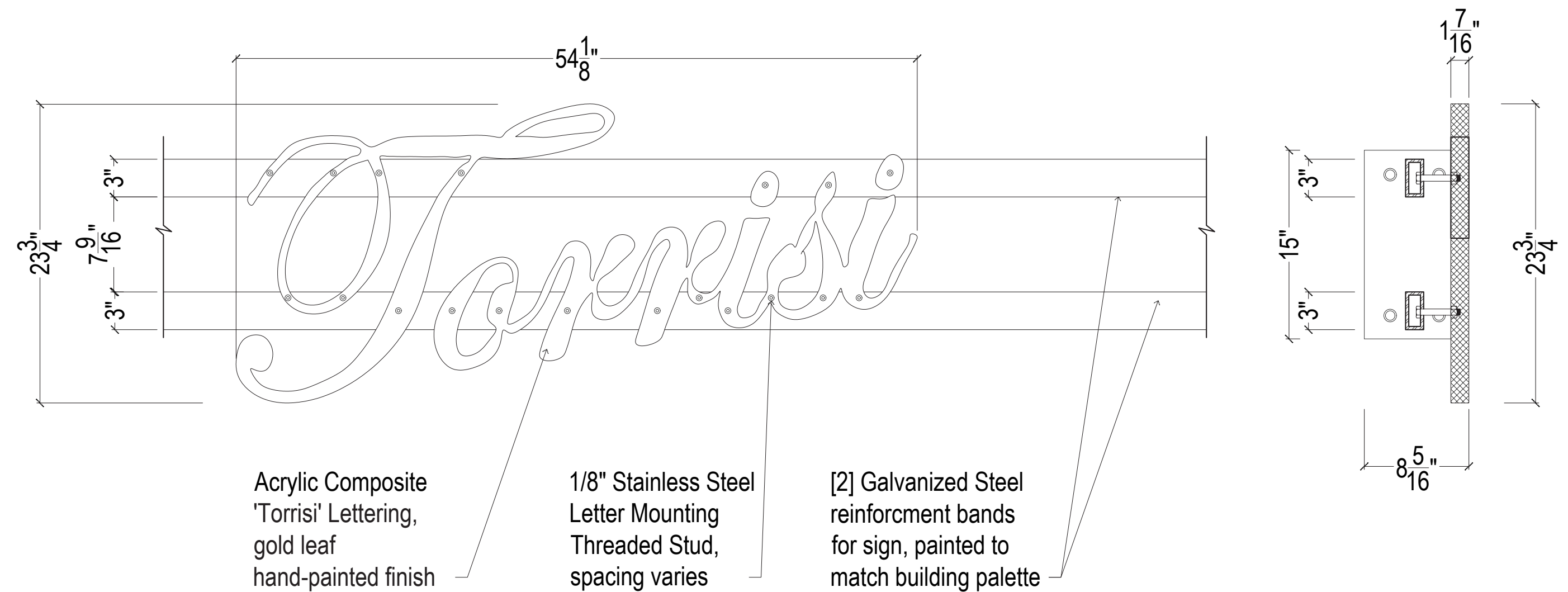




PROPOSED: 275 MULBERRY STREET (CORNER OF MULBERRY AND JERSEY STREETS)

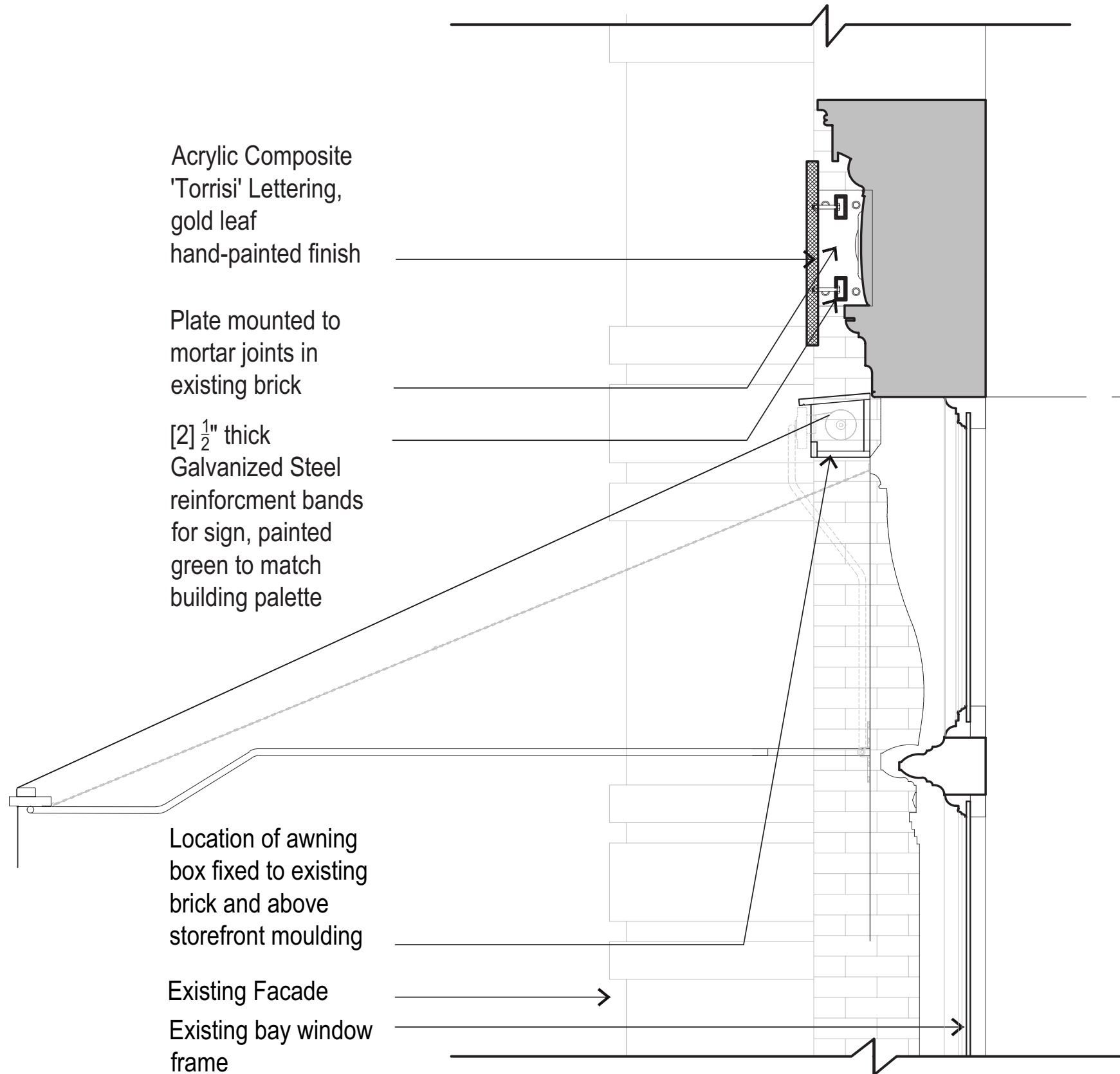


ACRYLIC  
COMPOSITE SIGN  
WITH HAND-PAINTED  
GOLD LEAF FINISH



PROPOSED SIGN: 275 MULBERRY STREET (CORNER OF MULBERRY AND JERSEY STREETS)





Acrylic Composite  
'Torrise' Lettering,  
gold leaf  
hand-painted finish

Plate mounted to  
mortar joints in  
existing brick

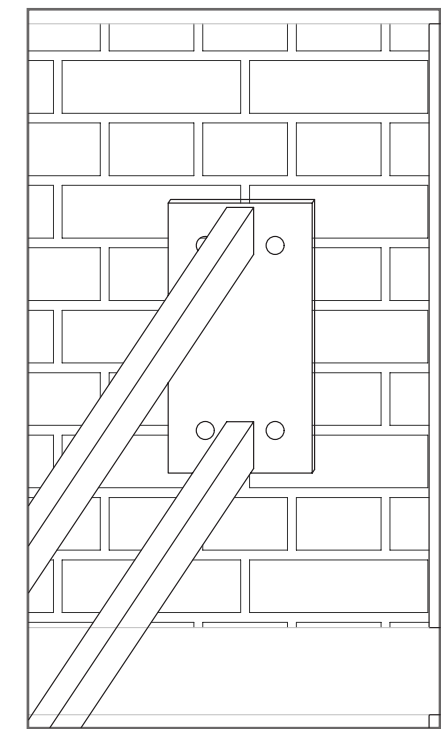
[2]  $\frac{1}{2}$ " thick  
Galvanized Steel  
reinforcement bands  
for sign, painted  
green to match  
building palette

Location of awning  
box fixed to existing  
brick and above  
storefront moulding

Existing Facade

Existing bay window  
frame

SECTION AT SIGN AND AWNING

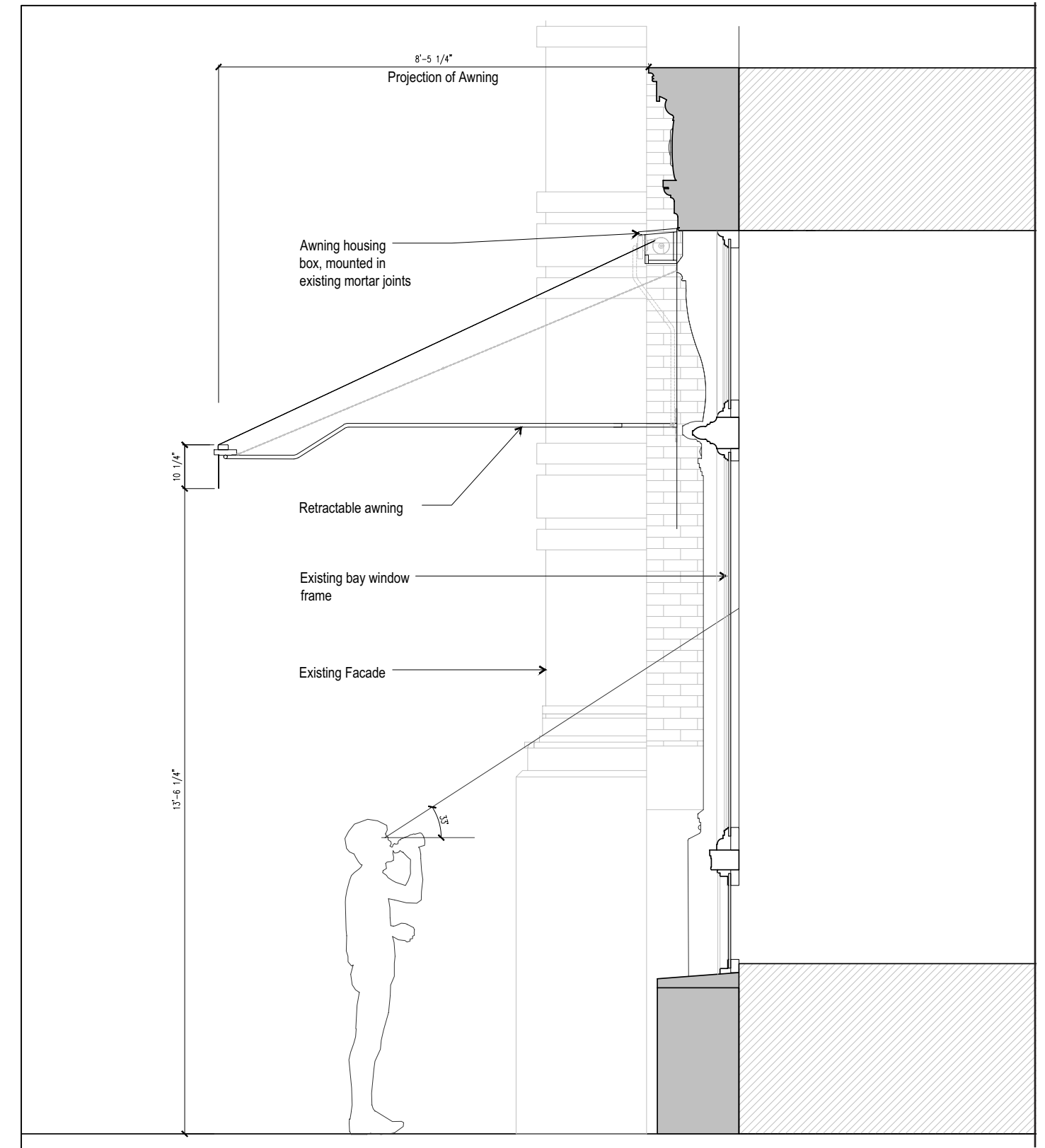
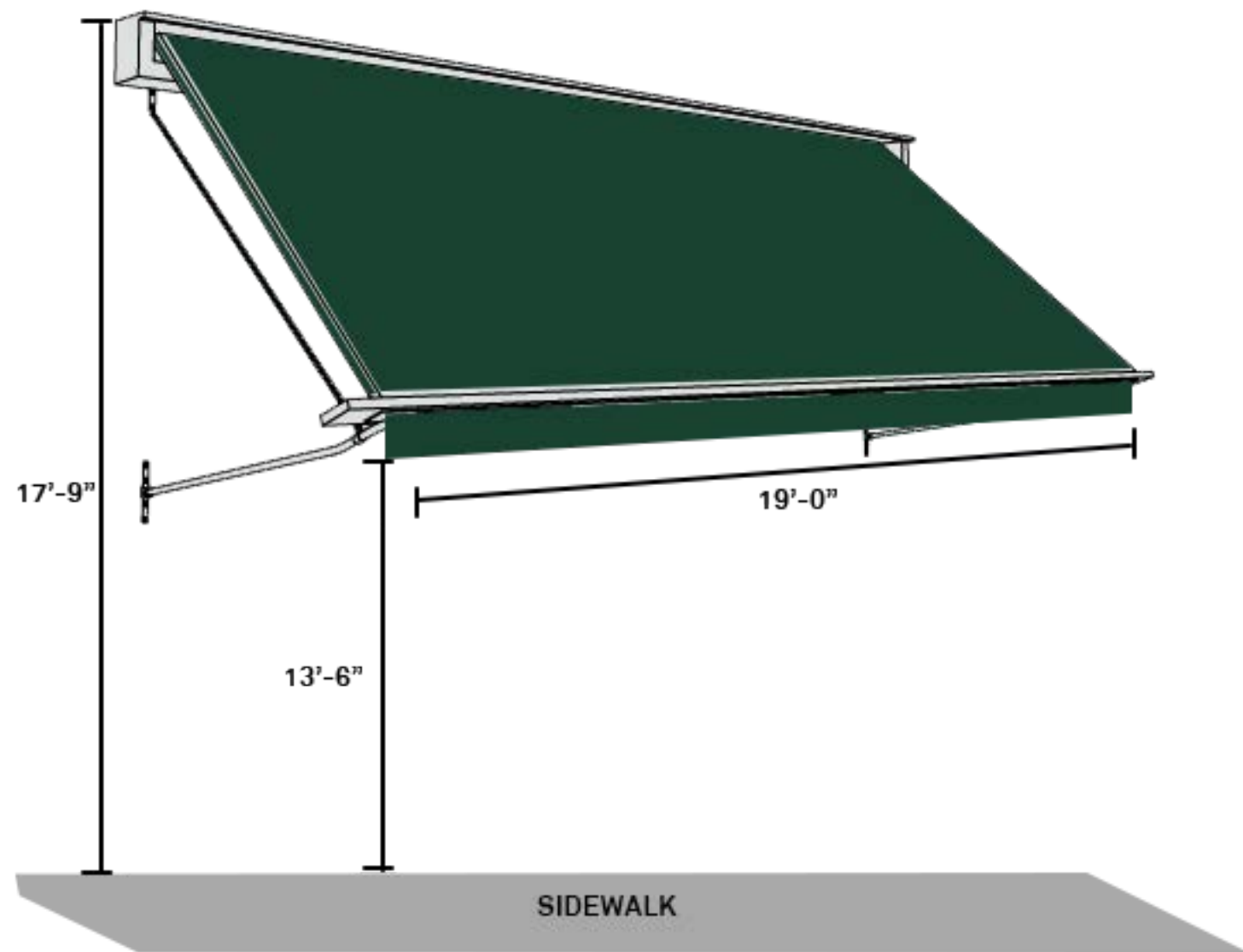


BAND SIGN MOUNTING DETAIL

PROPOSED SIGN: 275 MULBERRY STREET (CORNER OF MULBERRY AND JERSEY STREETS)



100% SOLUTION  
DYED ACRYLIC FIBER  
R-248 GREEN FABRIC



## SECTION AT PROPOSED AWNING: 275 MULBERRY STREET (CORNER OF MULBERRY AND JERSEY STREETS)





AWNING: 275 MULBERRY STREET (CORNER OF MULBERRY AND JERSEY STREETS)





EXISTING CONDITIONS: CORNER OF LAFAYETTE AND JERSEY STREETS





PROPOSED: CORNER OF LAFAYETTE AND JERSEY STREETS



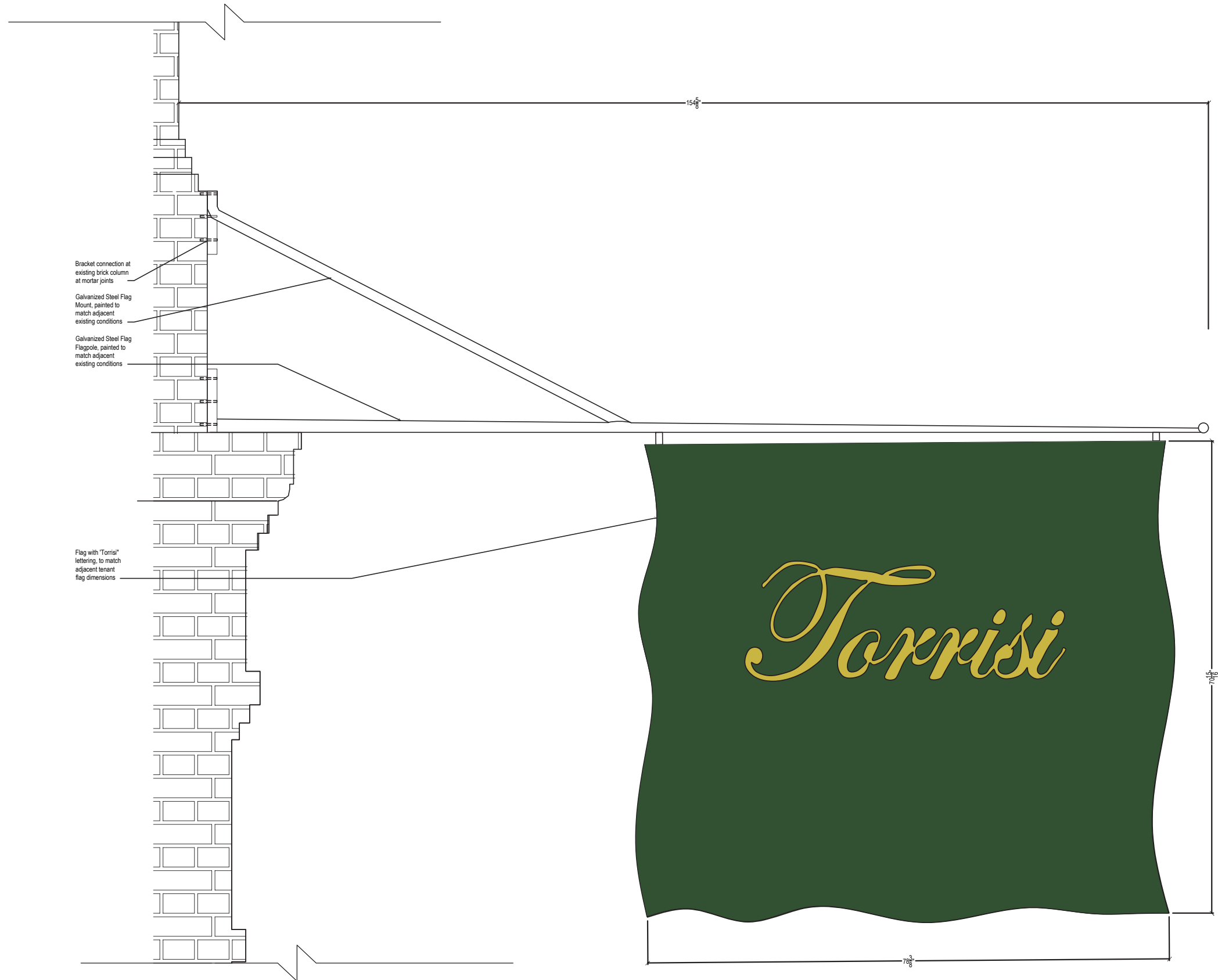
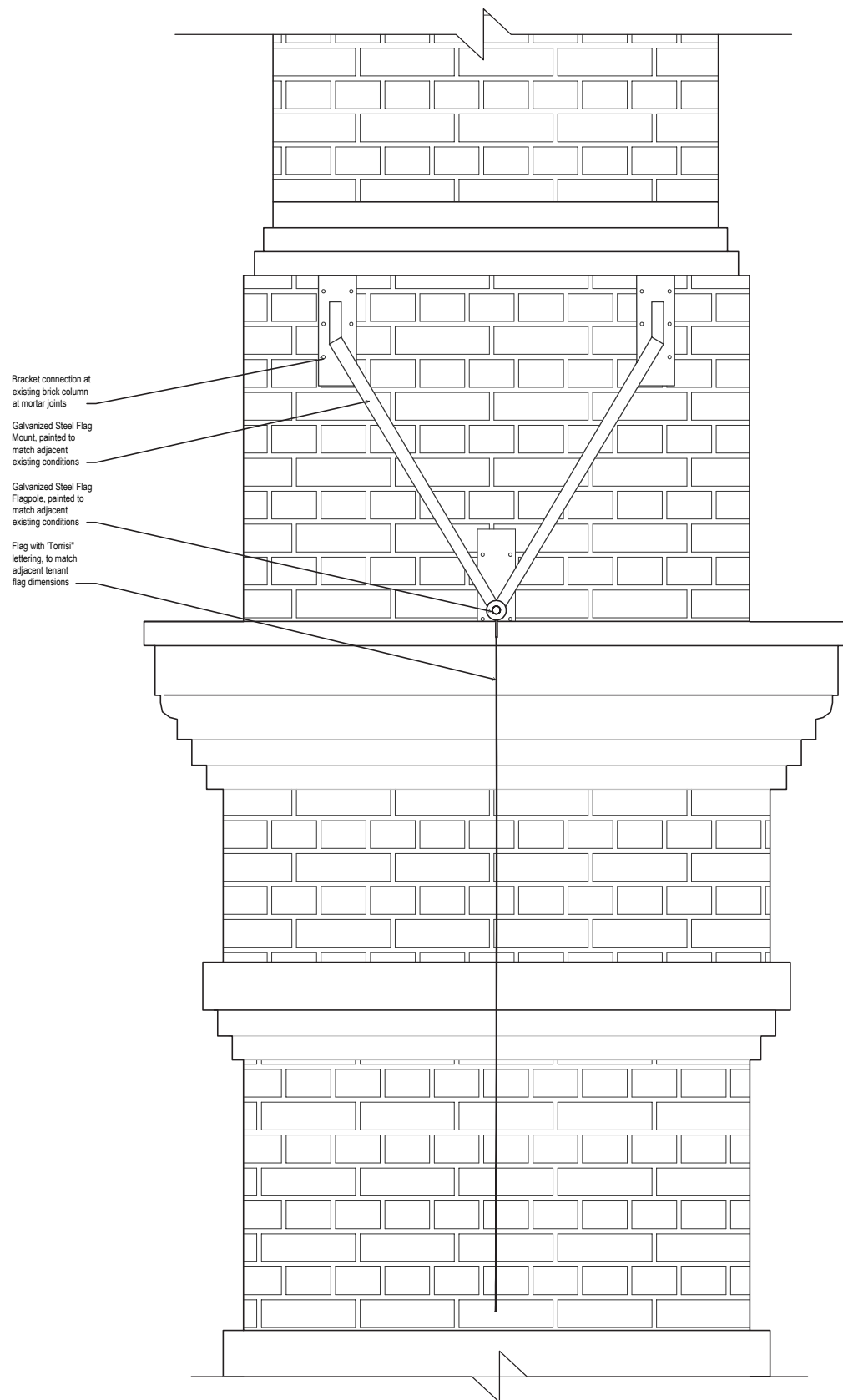


EXISTING CONDITIONS: 275 MULBERRY STREET (CORNER OF LAFAYETTE AND JERSEY STREETS)

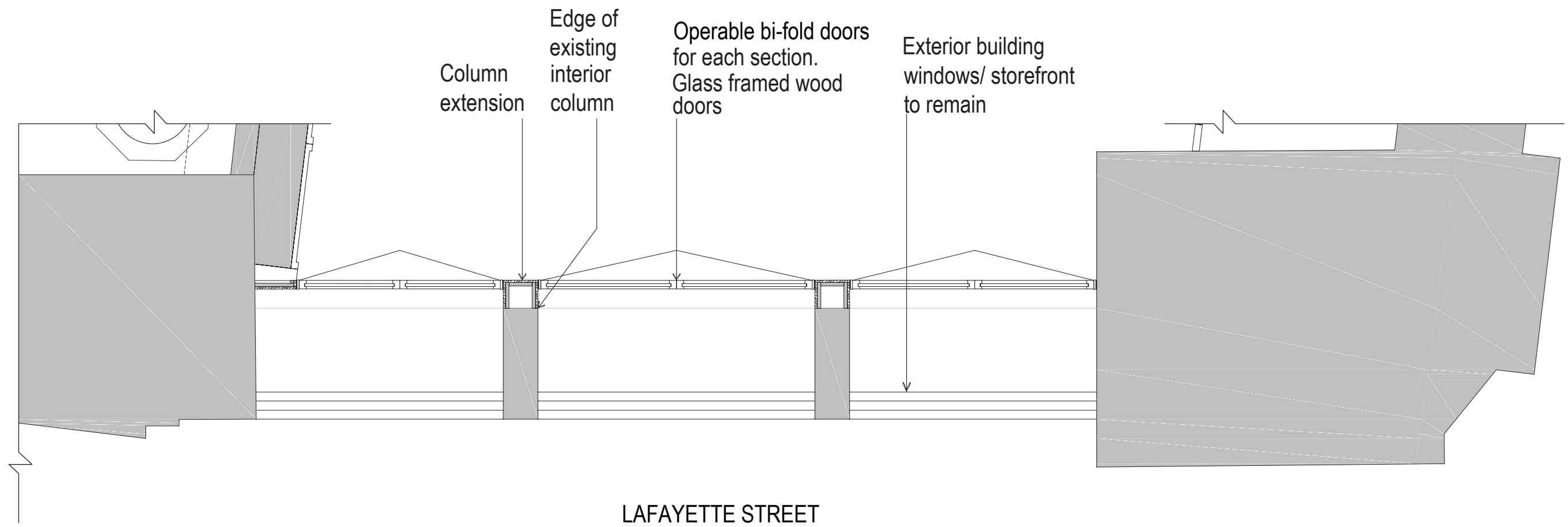
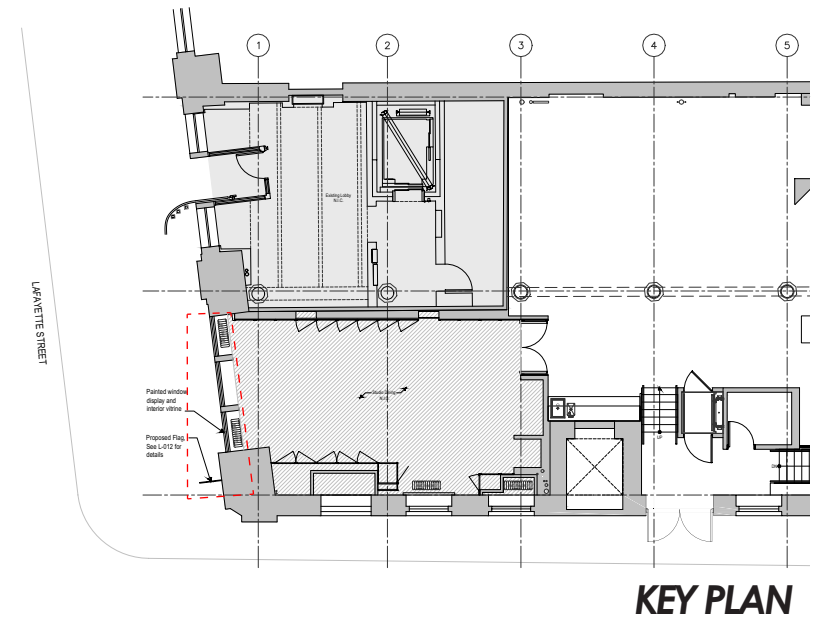


PROPOSED CONDITIONS: 275 MULBERRY STREET (CORNER OF LAFAYETTE AND JERSEY STREETS)



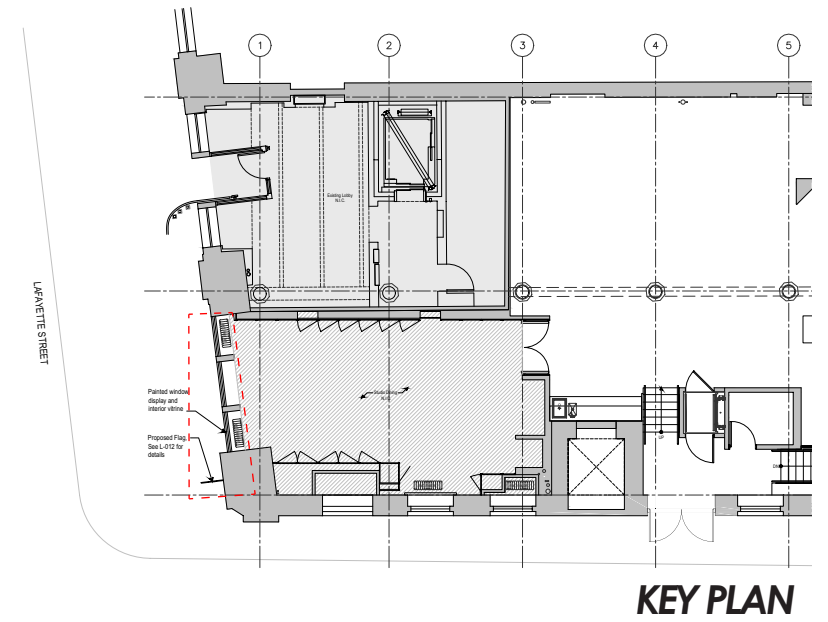
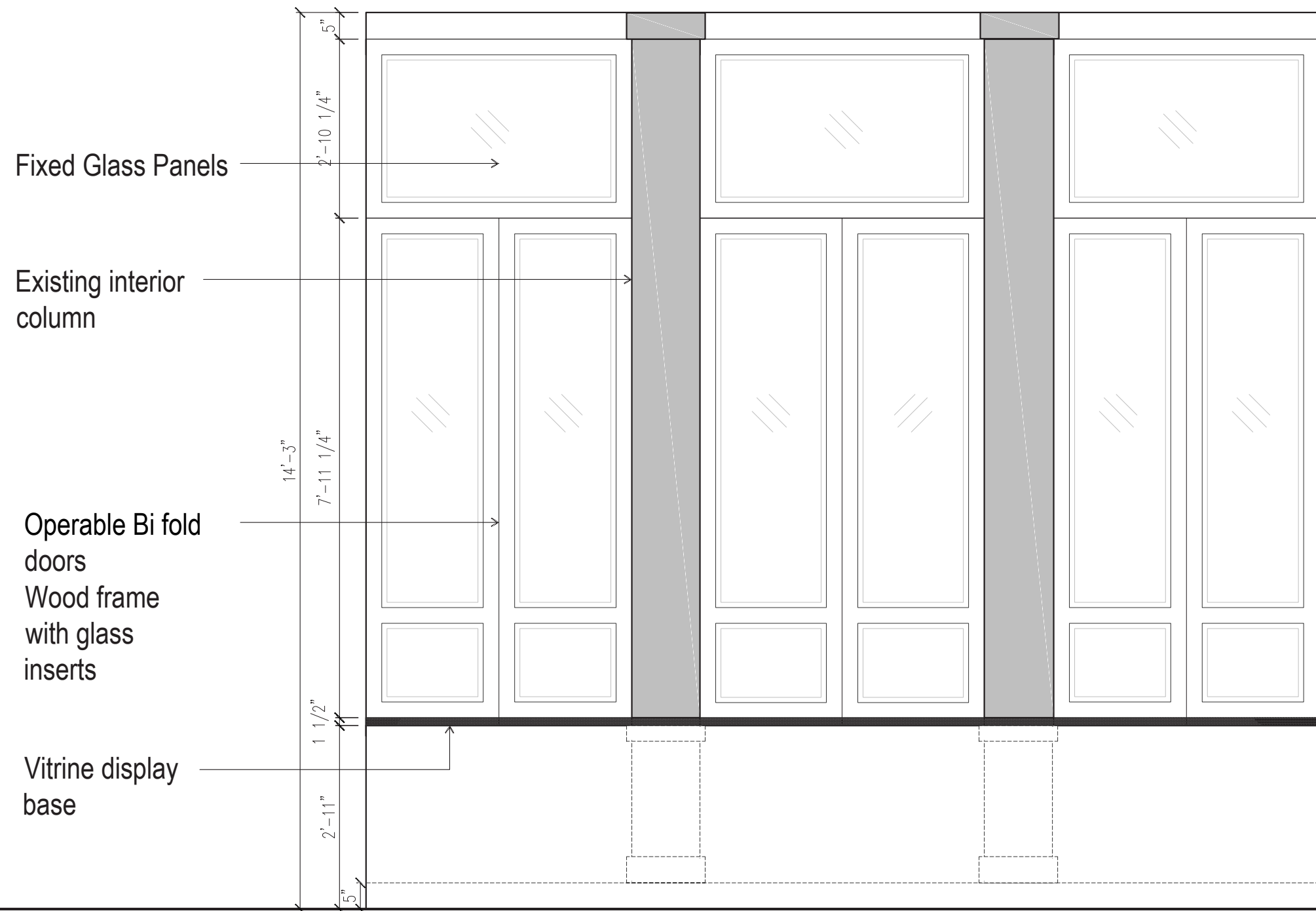


## FLAGPOLE AND BANNER

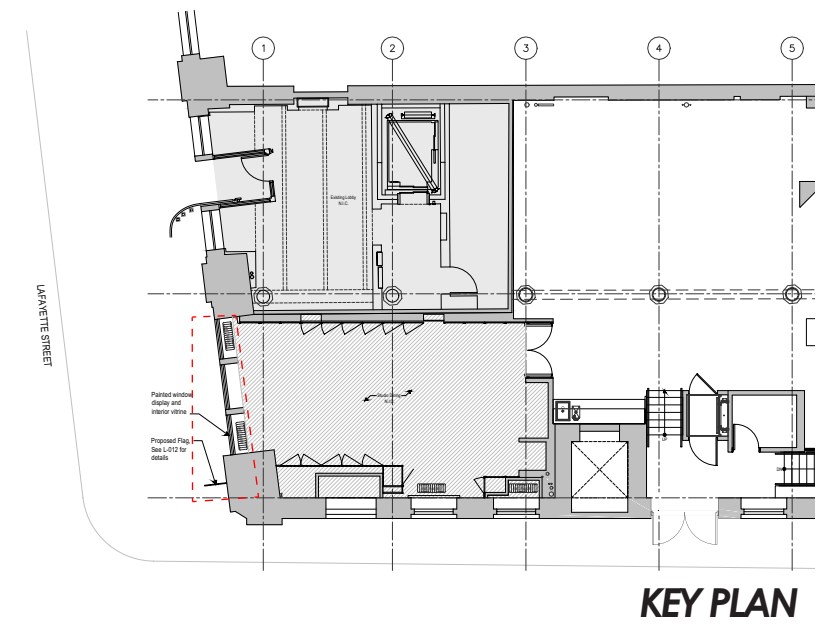
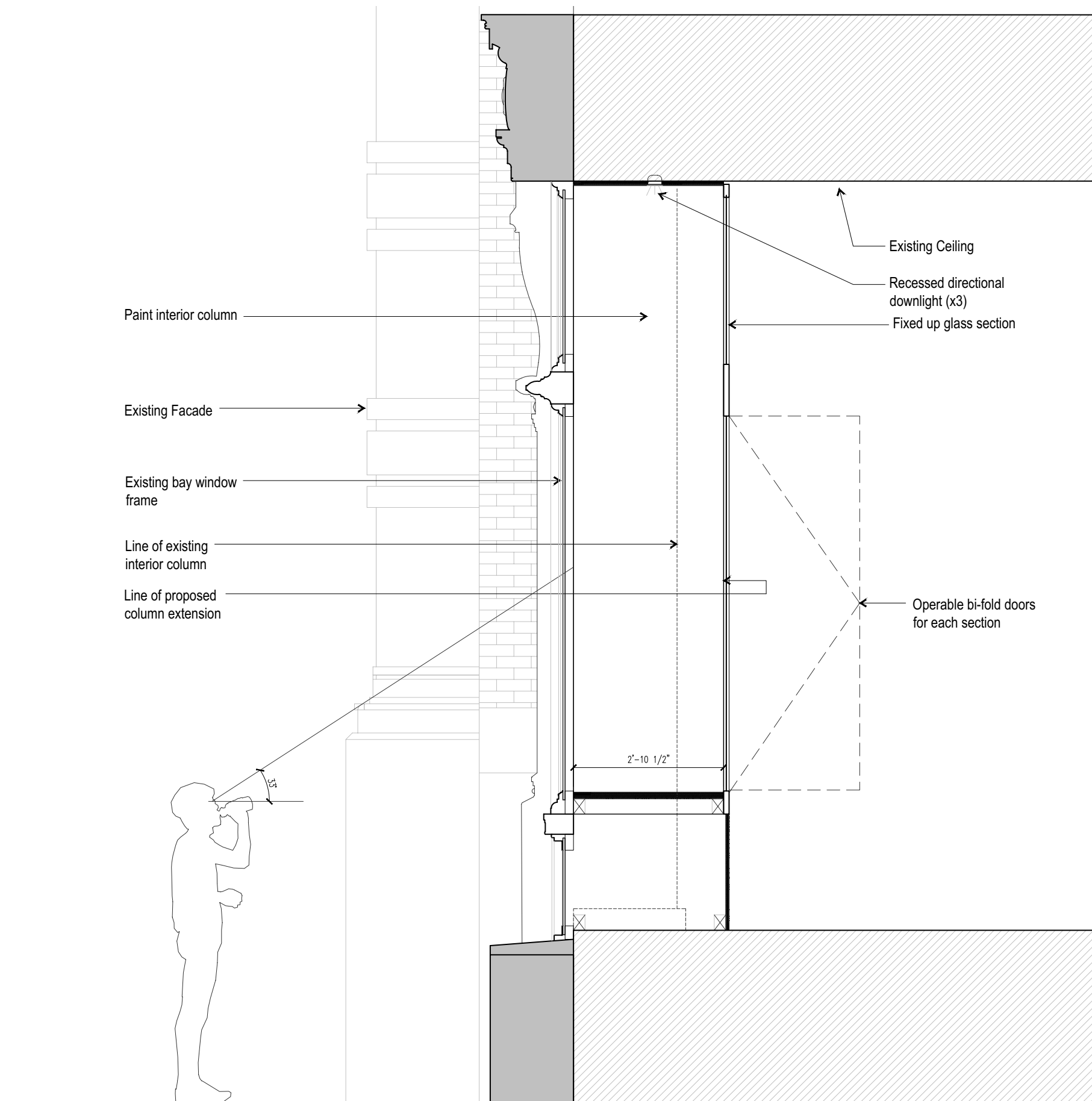


## INTERIOR VITRINE AT EXISTING WINDOW





## INTERIOR VITRINE AT EXISTING WINDOW



## INTERIOR VITRINE AT EXISTING WINDOW



# APPENDIX





160 PRINCE STREET



180 PRINCE STREET



80 SPRING STREET

AWNINGS: LOCAL PRECEDENTS, IN VARYING SCALES





584 BROADWAY



490 BROADWAY

## FLAGPOLES: LOCAL PRECEDENTS, BROADWAY





560 BROADWAY



556 BROADWAY

FLAGPOLES: LOCAL PRECEDENTS, BROADWAY





81 MULBERRY STREET, 1939-1941



120 MULBERRY STREET, 1939-1941

WINDOW DISPLAYS, HISTORIC PHOTOS



LOMBARDI'S, 32 SPRING STREET



ALBANESE MEATS & POULTRY, 238 ELIZABETH STREET

## WINDOW DISPLAYS, HISTORIC PHOTOS

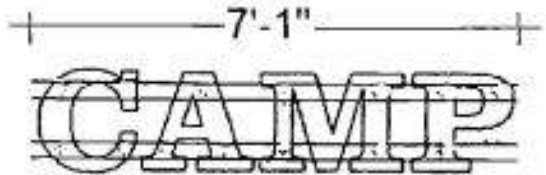
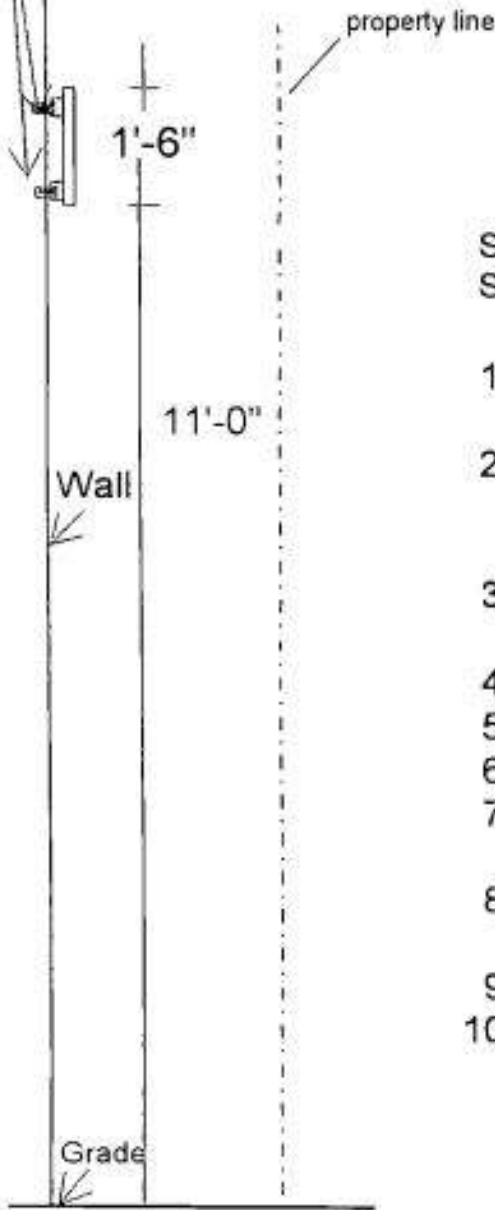


Total; = 66 sq.ft.illum.less than 359 sq.ft.O.K.

Complies with 32-66 Z.R.  
signs not within 200 feet of public park 1/2 acre or more  
signs not within 200 feet of arterial highway  
signs are not advertising signs

LOCATION: 295 Lafayette Street  
BLOCK: 510  
LOT: 7502  
ZONE: C6-3  
MAP: 12c

2"x2" angle iron 1/4" thick  
1/2 X 6" bolts w/sleeves 12"  
on center,A307  
ADJUST TO FIELD CONDITIONS



SIGN NOTES:

Square Footage: 11  
Frontage: 232.4'

- 1- Non-Illum.Accessory Wall Sign,Conforms w/H101.1,sign will not interfere with exit signs, traffic signals-colors-devices,etc.
- 2- Sign will not block doors, fire escapes,Conforms w/H103.1,.2 nor be mounted to fire exits,escapes,or interfere with any natural light or natural ventilation.
- 3- Signs shall be designated and constructed to comply w/H105.1- for use of materials,loads and stresses
- 4- Signs shall not be illuminated.
- 5- 3 other illuminated signs on lot
- 6- 9 other non-illuminated signs on lot
- 7- Complies w/H107.1-1.1-1.3,material limitations,ASTM D635 approved plastics.
- 8- Complies w/H111.1,.3 materials,non-combustible,except by H107,nor will signs extend above or beyond wall to which attached.
- 9- Weight-250#
- 10- Complies w/H112.5,sign weight not to exceed building componant to which it is attached.







PROPOSED AWNING: 275 MULBERRY STREET (CORNER OF MULBERRY AND JERSEY STREETS)





PROPOSED AWNING: 275 MULBERRY STREET (CORNER OF MULBERRY AND JERSEY STREETS)

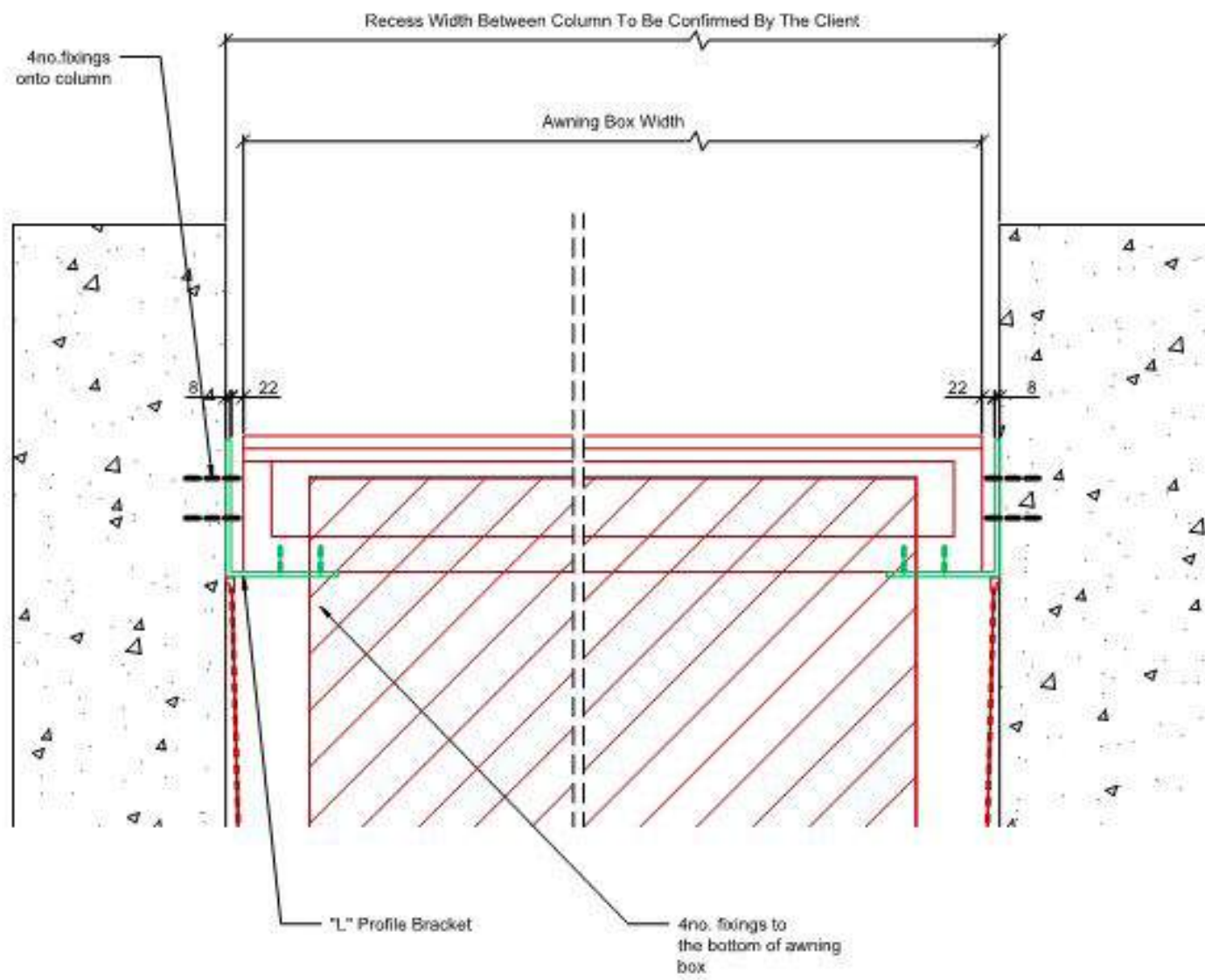




## AWNING SUPPLEMENTAL IMAGES



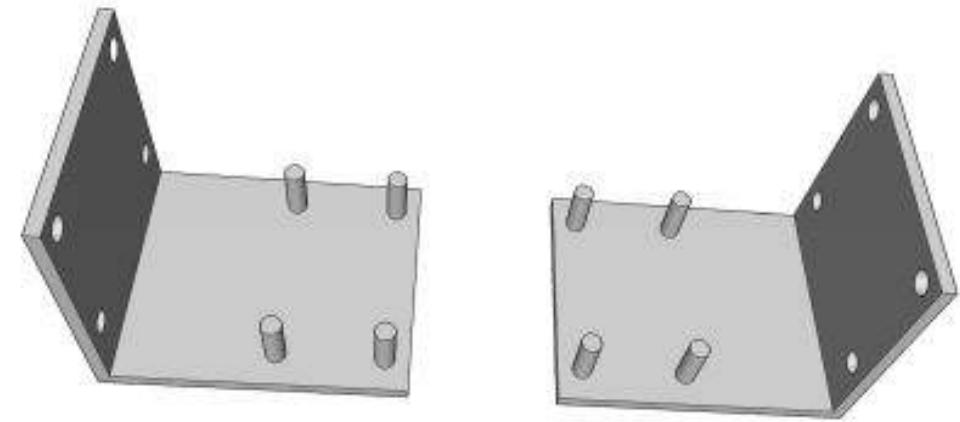
## DETAIL A



Scale 1:8@A3

0 200 400 600 800 1000 mm

## SIDE FIXED "L" BRACKETS | REFERENCE IMAGE



## AWNING SUPPLEMENTAL IMAGES





PROPOSED: SIGN AND INTERIOR VITRINE AT CORNER OF LAFAYETTE AND JERSEY STREETS



**September 28th, 2021**  
Public Hearing

The current proposal is:

**Preservation Department – Item 3, LPC-22-01500**

**275 Mulberry Street - The Puck Building - Individual Landmark**  
**Borough of Manhattan**

**To Testify Please Join Zoom**

**Webinar ID: 847 6405 0416**

**Passcode: 421296**

By Phone:

1 646-558-8656

US (New York) 877-853-5257 (Toll free)

US 888 475 4499 (Toll free)

**Note:** If you want to testify on an item, join the Zoom webinar at the agenda's "Be Here by" time (about an hour in advance). When the Chair indicates it's time to testify, "raise your hand" via the Zoom app if you want to speak (\*9 on the phone). Those who signed up in advance will be called first.