

The current proposal is:

Preservation Department – Item 6, LPC-20-08115

**163 East 67th Street – Park East Synagogue,
Borough of Manhattan**

How to Testify Via Zoom:

<https://us02web.zoom.us/j/85235204043?pwd=UWtpd1hISjhpQ3R6VUNVS0pxd05zUT09>

Webinar ID: 852 3520 4043

Passcode: 866444

By Phone:

1 646-558-8656

US (New York) 877-853-5257 (Toll free)

US 888 475 4499 (Toll free)

Note: If you want to testify on an item, join the Zoom webinar at the agenda’s “Be Here by” time (about an hour in advance). When the Chair indicates it’s time to testify, “raise your hand” via the Zoom app if you want to speak (*9 on the phone). Those who signed up in advance will be called first.

163 East 67th Street

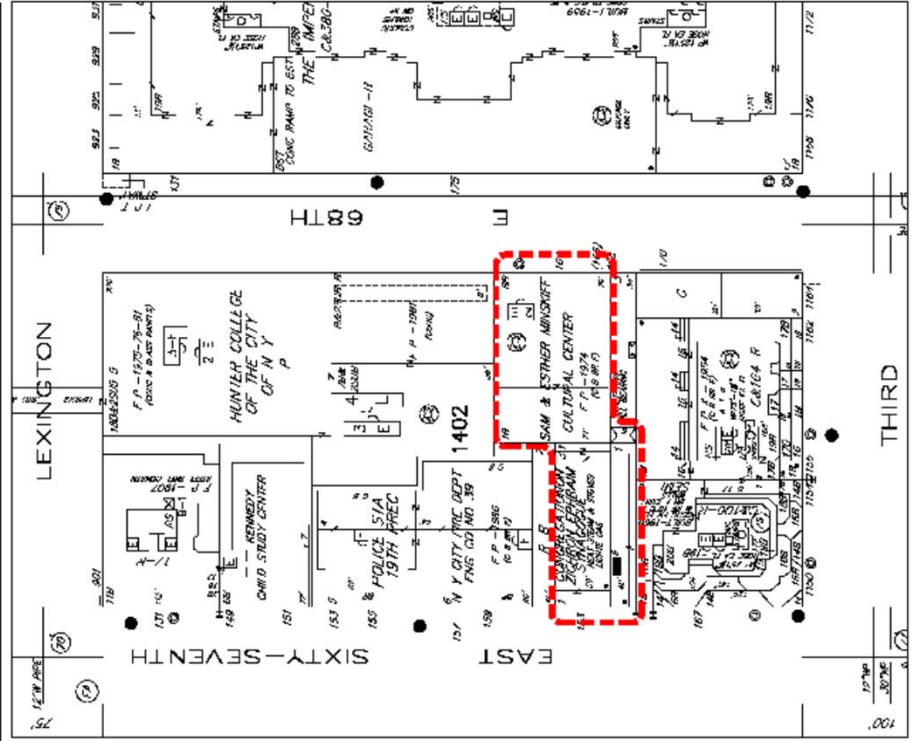
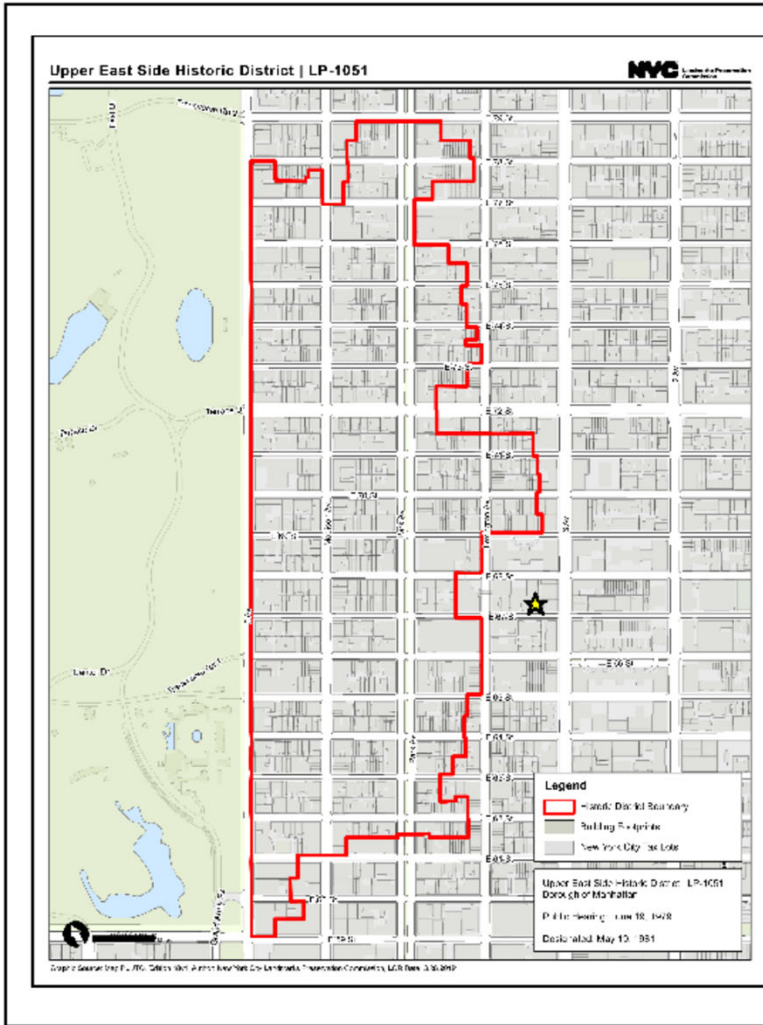
PARK EAST SYNOGOGUE



BLOCK: 1402
LOT: 30
COMMUNITY BOARD: 108
INDIVIDUAL LANDMARK

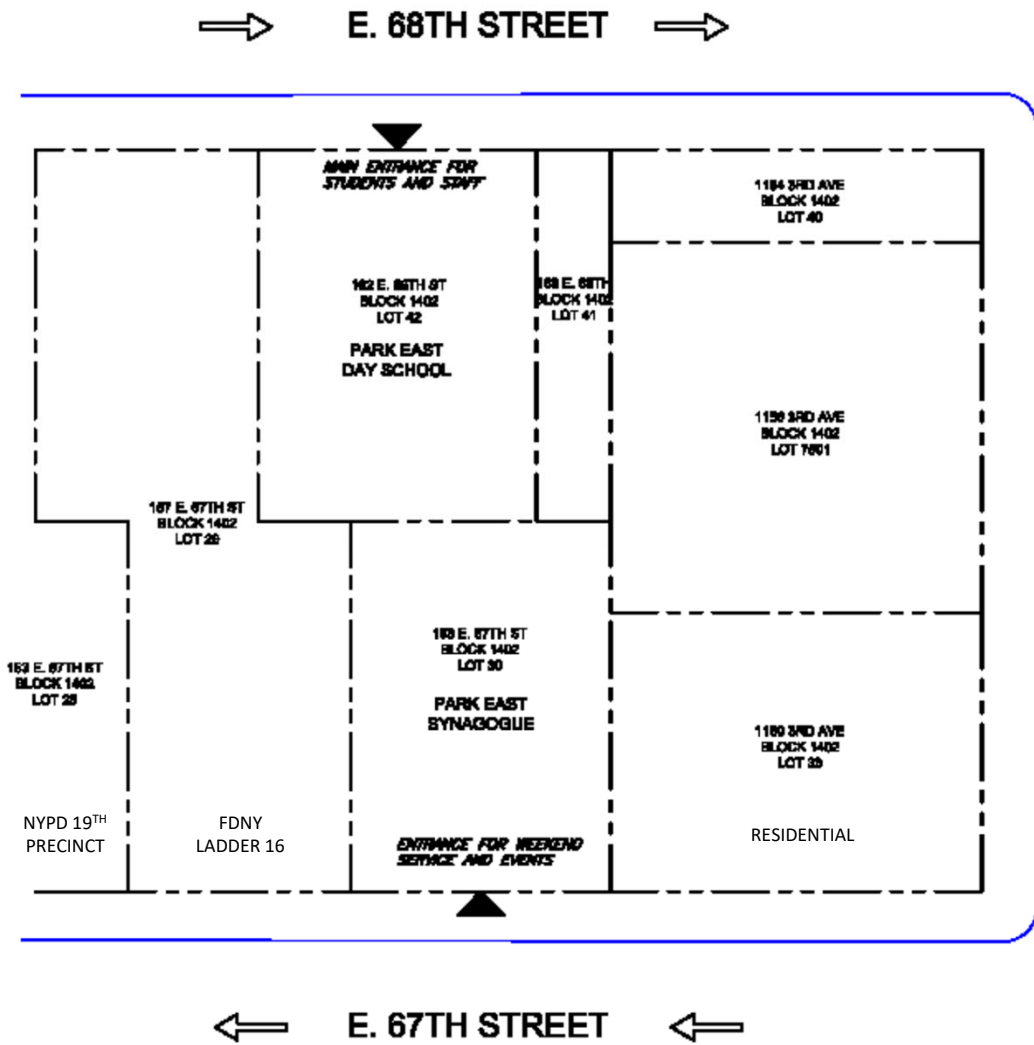
PROPOSED:
Replacement of existing signs
with LED signs

LED signs will allow for more
current display of updated
information for services and
upcoming events at the
Synagogue via app



*NOTE – sanborn map oriented with North up. **SANBORN MAP**

Landmarks Map



← CIRCA 1940

PHOTO FROM NOVEMBER 1988





901 Lexington Ave



149 E. 67TH ST



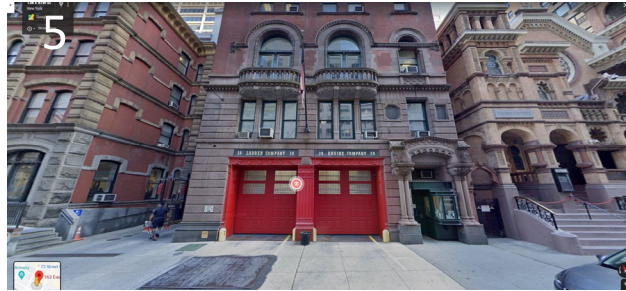
149 E. 67TH ST

153 E. 67th St



153 E. 67th St

157 E. 67th St

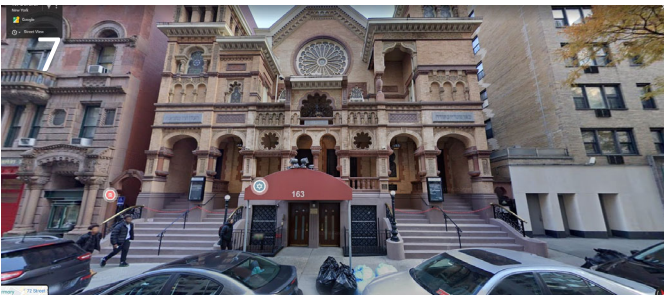


157 E. 67th St



157 E. 67th St

163 E. 67th St



163 E. 67th St

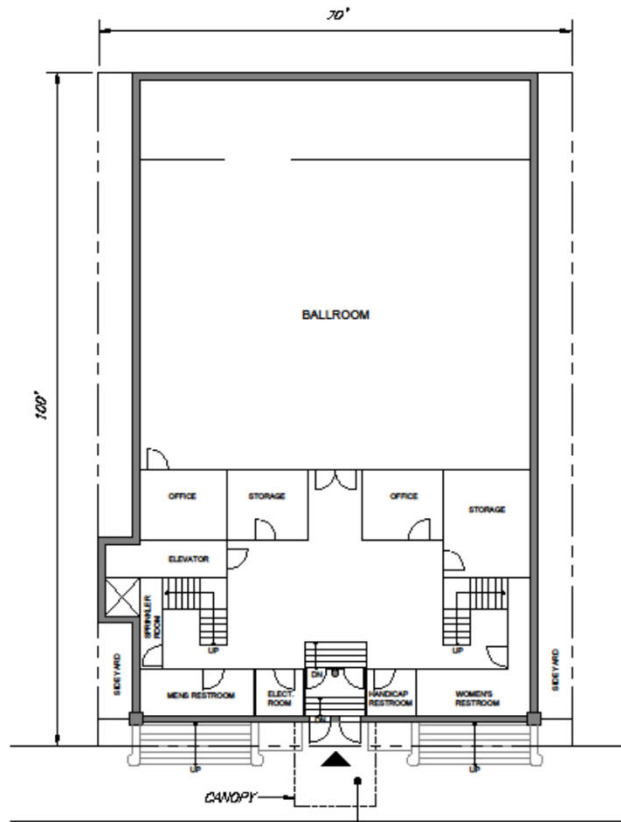


163 E. 67th St

1150 3rd Ave



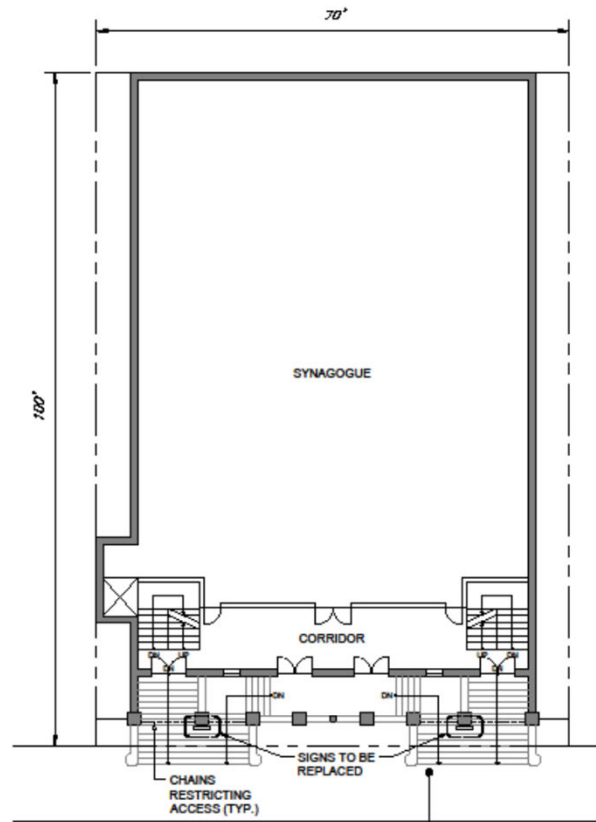
1150 3rd Ave



NOTE: BASEMENT LEVEL
ENTRANCE USED
DURING WEEKEND
SERVICE AND EVENTS

← E. 67TH STREET ←

BASEMENT LEVEL



NOTE: FIRST FLOOR
ENTRANCE ONLY USED
FOR ON RARE SPECIAL
OCCASIONS

← E. 67TH STREET ←

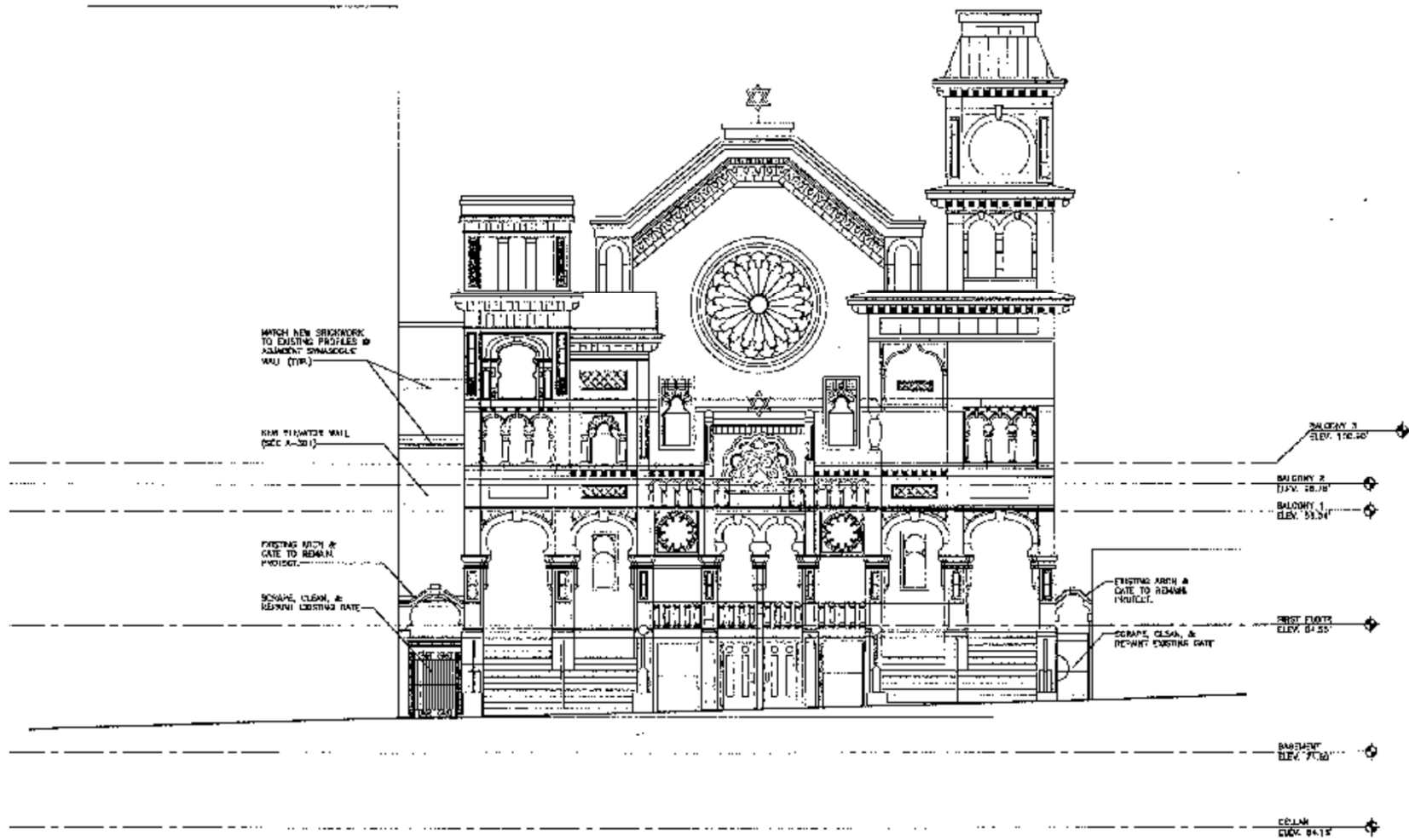
FIRST FLOOR LEVEL



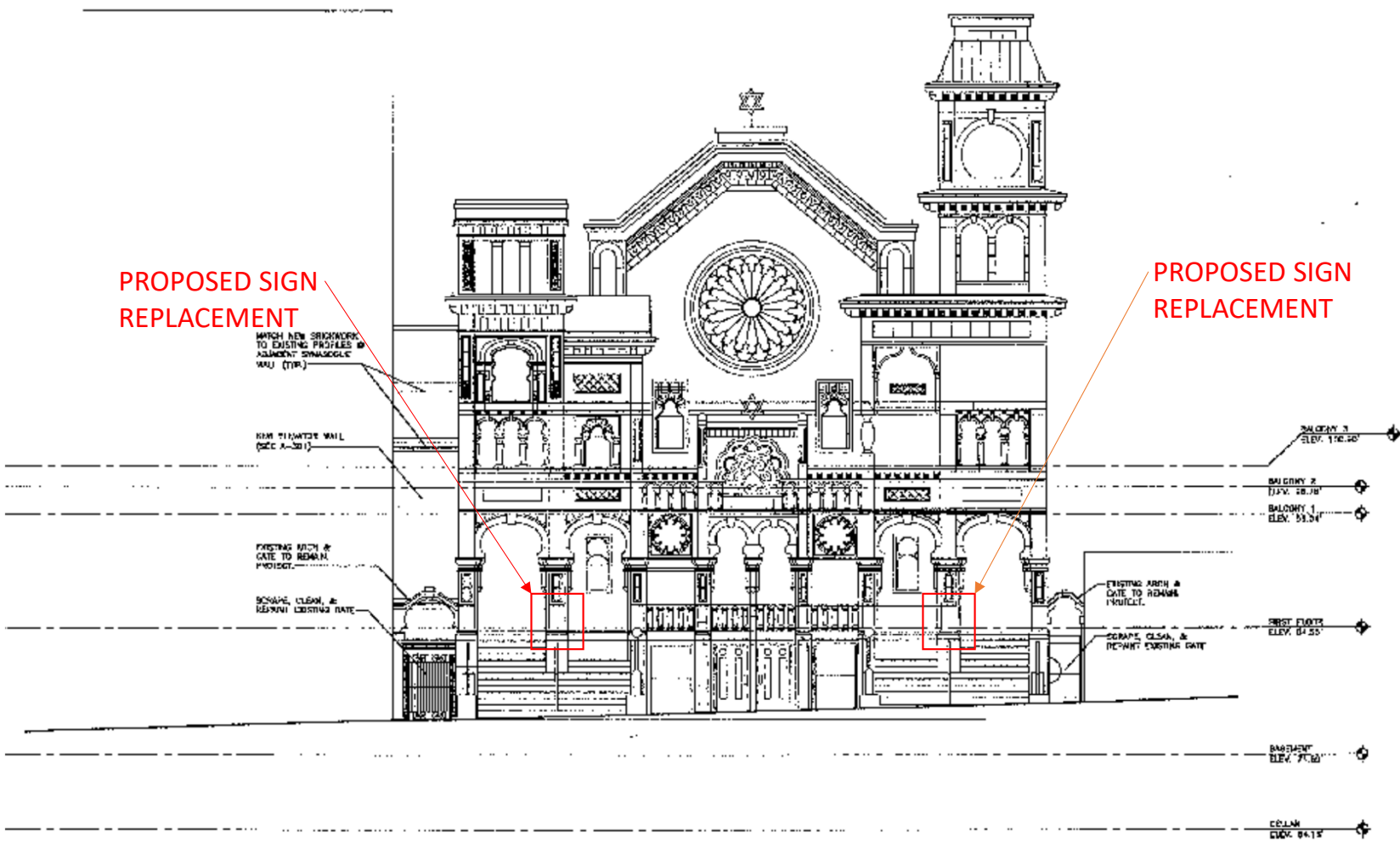
PARK EAST SYNAGOGUE

163 E. 67TH STREET
NEW YORK, NY
BLOCK: 1402
LOT: 30

Landmark Type: Individual Landmark
Date of Designation: 1/29/1980
Architect: Schneider & Herter
Architectural Style: Moorish
Constructed - 1889-1890



1 SOUTH ELEVATION
Scale: 0" = 12 feet



1 SOUTH ELEVATION
 Scale: 0" = 12 feet



1ST FLOOR
ENTRANCE



BASEMENT ENTRANCE

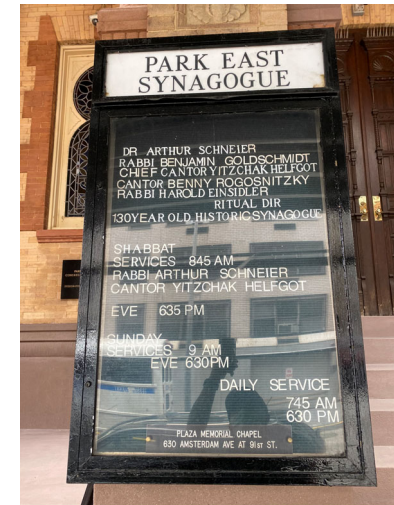




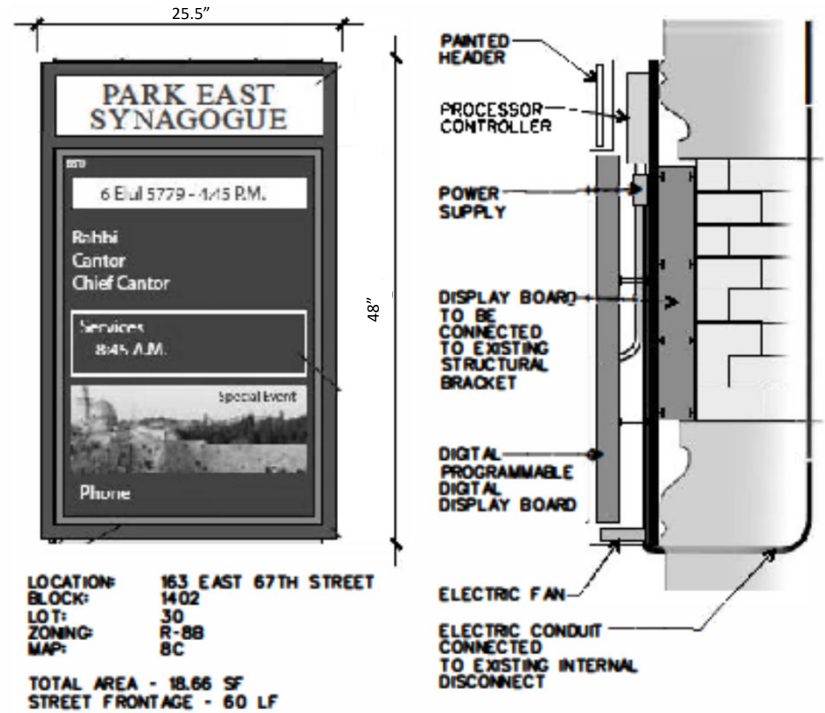
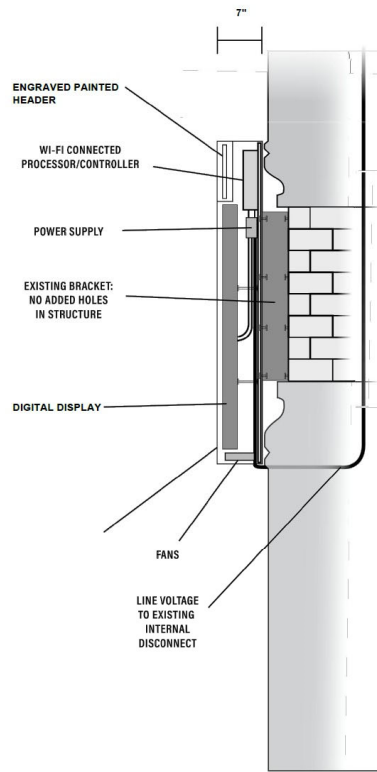
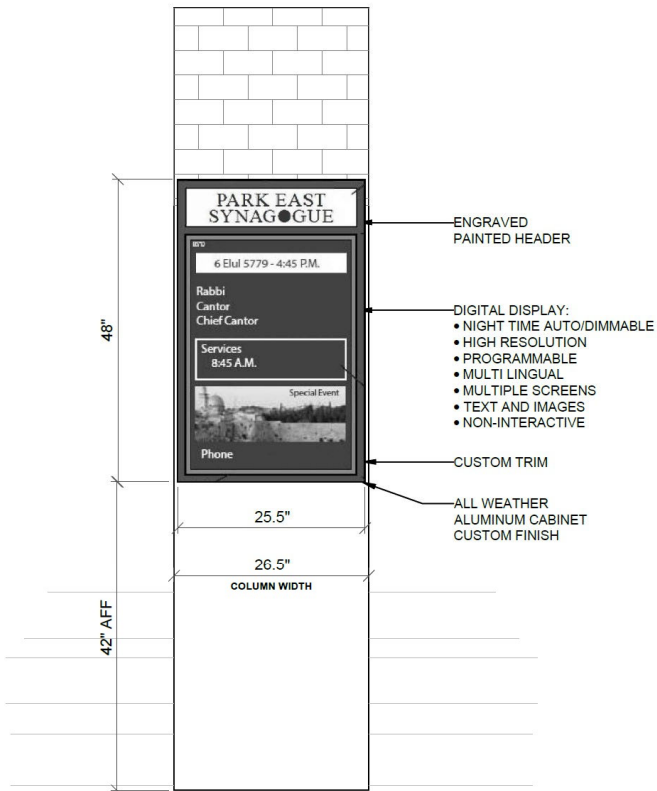
EXISTING SIGNS



EXISTING MOUNTING BRACKETS TO BE USED FOR NEW PROPOSED SIGNS



PROPOSED SIGNS



LOCATION: 163 EAST 67TH STREET
 BLOCK: 1402
 LOT: 30
 ZONING: R-88
 MAP: 8C

TOTAL AREA - 18.66 SF
 STREET FRONTAGE - 60 LF

SIGN NOTES:

1. ILLUMINATED ACCESSORY WALL SIGN CONFIRMS W/C27-498(a)(b)
2. SIGN WILL NOT INTERFERE W/ TRAFFIC SIGNAL - COLORS
3. SIGN WILL NOT BLOCK ANY EXIT DOORS OR FIRE ESCAPES AND CONFIRMS W/C27-499
4. THERE ARE NO OTHER ILLUMINATED SIGNS ON THE LOT
5. THERE ARE NO NON-ILLUMINATED SIGN ON THE LOT
6. MATERIAL: SLOW BURNING PLASTIC, OR SIMILAR AS PER C27-507
7. SIGN CONFIRMS TO C27-501(a) - LIMITATIONS, (b) MATERIALS AND (c) SUPPORTS
8. SIGN CONFIRMS TO C27-508(a) - MAINTENANCE
9. SIGN CONFIRMS TO C27-508(b)
10. SIGN CONFIRMS TO C27-505 - ILLUMINATED SIGNS



Display Intent:

Generally, the display will be monochromatic with white text information on a black background, similar to the pin letter display housed in the existing directory case. Special event, holiday and important announcements may include muted colors in pictorial display with text. Screen changes will occur with a modest swipe speed or direct cut. Images will remain static for a period not less than 20 seconds before transition. It is not the intent to run video motion pictures.

Evening Display:

The Display screen will automatically adjust to the light level for the time of day and be dimmed after dark. The display will be further dimmed for the time period from 11:00 PM to 6:00 AM. On the rare occasion where an event will not be concluded by 11:00 PM, the display will be dimmed at the conclusion of the event.

PROPOSED SIGNS SPECIFICATIONS

*SIGN DISPLAYS TO BE MOUNTED VERTICALLY IN ORIENTATION



XHB432

43" Xtreme™ High Bright Outdoor Display

There has never been an outdoor daytime readable display built to withstand the harsh outdoor elements like the Peerless-AV™ Xtreme™ High Bright. The fully-sealed weatherproof design provides the ultimate protection, while the patented Dynamic Thermal Transfer™ system passively cools the display eliminating the need for filters and exhaust fans. With the highest water and dust ingress protection ratings in its class, the Xtreme High Bright display is a perfect choice for any outdoor location.



Operating Temperature Range: -31°F - 140°F



AMBIENT LIGHT SENSOR
Automatically adjusts brightness to best match the lighting conditions



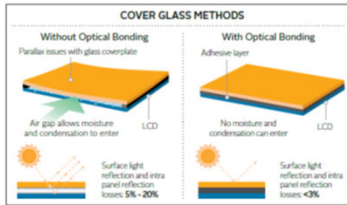
FULLY-SEALED DESIGN
Highest environmental rating prevents the ingress of foreign materials such as water, dust or insects from entering the display

IK10 RATED, IMPACT RESISTANT, TEMPERED COVER GLASS
Protects the screen against vandalism and debris



PATENTED DYNAMIC THERMAL TRANSFER™ SYSTEM
Keeps internal components properly cooled in extreme heat

- Optically bonded, anti-reflective cover glass increases the perceived contrast ratio and cuts down on glare, providing amazing picture quality, even in direct sunlight
- Daylight readable with LED backlight and full HD 1080p resolution for a bright, crisp picture
- Includes Quarter Wave Plate polarizer allowing for portrait and landscape installations
- IPS panel provides color accuracy, even at the harshest of angles
- Remote and Local monitoring supported via IP Addressable user interface for temperature, humidity, and power draw of the display
- Waterproof Xtreme™ Outdoor Soundbar delivers highest quality sound (optional accessory)



info@peerless-av.com
peerless-av.com

peerless-AV
Driving Technology Through Innovation

Model Numbers

XHB432 43" Xtreme™ High Bright Outdoor Display

WARRANTY: 2 years

LCD Display

ACTIVE SCREEN SIZE	42.5" (1080mm) Diagonal
PIXEL PITCH	.4902mm x .4902mm
ASPECT RATIO	16:9
RESOLUTION	1920 x 1080
COLOR DEPTH	8Bit (16.7 Billion Colors)
BRIGHTNESS	2,500cd/m²
BACKLIGHT ADJUSTMENT	Automatic (Ambient Light Sensor)
CONTRAST RATIO	1200:1
VIEWING ANGLE	178° Vertical/Horizontal
RESPONSE TIME	12ms (Gray to Gray)
REFRESH RATE	60Hz

TV Controller Features

ANALOG TV	NTSC
DIGITAL TV	ATSC, MPEG4, QAM256, H.264
PICTURE ADJUSTMENT	Brightness, Contrast, Tint/Sharpness, Color
PICTURE MODE	Standard, Dynamic, Personal, Theater
COLOR TEMPERATURE ADJUSTMENT	Cool, Normal, Warm, Personal
SCREEN ADJUSTMENT	4:3, 16:9, Full, Zoom
CLOCK, SLEEP TIMER	Yes
V-CHIP	Yes

Input/Output Connections

TV INPUT	Coax, 75 ohm (x1)
VGA INPUT	15 pin D-SUB (x1)
HDMI INPUT	HDMI (x3), 480i, 480p, 720p, 1080i, 1080p
CVBS INPUT	3.5mm (x1)
YPBPR INPUT	3.5mm (x1)
VGA STEREO AUDIO INPUT	3.5mm (x1)
DISPLAYPORT	DP (x1)
ANALOG AUDIO OUTPUT	3.5mm HeadphoneJack (x1)
DIGITAL AUDIO OUTPUT	Optical (x1)
USB DATA INPUT	USB 2.0 A (x1) (Audio, Video, text & photo)
RS232	DB-9 (Female)
I2VDC 2.5A OUTPUT	2.5mm (x1)
USB POWER SWDC 2-A OUTPUT	USB 2.0 A (x1)
IR EXTENDER	3.5mm (x1)
AMBIENT LIGHT SENSOR EXTENDER	3.5mm (x1)
LAN INPUT	RJ-45 (x1)

Environmental

OPERATING TEMPERATURE	-31°F - 140°F (-35°C - 60°C)
IP RATING	IP68
SAFETY/EMC	FCC Class A

Power

AC INPUT	110 VAC to 220 VAC, 50 to 60 Hz
POWER CONSUMPTION	360W

Mechanical

SIZE (W x H x D)	39.5" x 23.3" x 4.8" (1003 x 592 x 122mm)
COLOR	Black
GLASS	IK10 Rated, Tempered & Anti-reflective
VESA PATTERN	400 x 200, 400 x 400mm
NET WEIGHT	82lb (37.2kg)

Package Specifications

PACKAGE SIZE (W x H x D)	PACKAGE SHIP WEIGHT	PACKAGE UPC CODE	PACKAGE CONTENTS	PALLETT SIZE (W x D)	UNITS IN PACKAGE
TBD	TBD	735029322542	Display, Waterproof Universal Remote Control, User's Guide, Hex Wrench, Power Cord, IR Extender	45" x 50" (5x per pallet)	1

Accessories

EDS-VW765-LAND:	SmartMount Outdoor Full Service Video Wall Mount, Landscape	ACCD-DSK:	5 Volt Accessory Kit
EPA762PU:	Outdoor Articulating Wall Mount	ACCD-12K:	12 Volt Accessory Kit
EP1190U(S):	Outdoor Universal Tilt Wall Mount	ALLU-ALLU:	ARMOR Accessory Kit
ESL763(S):	Outdoor Articulating Wall Mount	ACCD-AL-G:	Ambient Light Sensor Partwelder
ESF655P:	Outdoor Universal Flat Wall Mount, Portrait	CLCOV-LG-GR:	Display Cover - Large
ECHU:	Wind Rated Ceiling Mount	KOP555-XTR:	55" Outdoor Portrait Kiosk
EPWH:	Wind Rated Pedestal Mount	WOL555-XTR:	55" Outdoor Landscape Kiosk
EWMU:	Wind Rated Wall Mount	SPK-080:	Xtreme™ Outdoor Soundbar

All dimensions = inch (mm)

Architect Specifications

The Xtreme™ High Bright Outdoor Display shall be a Peerless-AV model XHB432 and shall be located where indicated on the plans. Assembly and installation shall be done according to instructions provided by the manufacturer.

Visit peerless-av.com to see the complete line of AV solutions from Peerless-AV, including outdoor displays, wireless, kiosks, digital audio, display mounts, projector mounts, carts/stands, and a full assortment of accessories.

Peerless-AV
2300 White Oak Circle
Aurora, IL 60502 USA
(800) 065-2112
(630) 375-5100
Fax: (800) 359-6500

Peerless-AV EMEA
Unit 3 Watford Interchange
Colonial Way, Watford
Herts, WD24 4WP
United Kingdom
+44 (0) 1923 200100
Fax: +44 (0) 1923 200101

Peerless-AV Latin America
Ave de las Industrias 413
Parque Industrial Escobedo
Escobedo, N.L.,
Mexico 66062
+52 (81) 8384-8300
Fax: +52 (81) 8384-8360



© 2018 Peerless Industries, Inc. Peerless-AV® is a registered trademark and Xtreme™ is a trademark of Peerless Industries, Inc. All rights reserved. Other parties' marks are the property of their respective owners.

LIT-1637



LOCATION OF HOLE FOR CONDUIT

CONDUIT PATH

EXISTING SIGN

Benjamin Moore #1015 "Cowboy Boots" conduit painted to match concrete base below baluster

CONDUIT PATH

conduit path runs along moulding to rear wall, drill 1" diameter hole into interior space to electrical connection. Estimated conduit path – 7'



Materials

Conduit:

1/2" Rigid Aluminum – 5ZM18

Outer Diameter = 27/32"



Strap:

Rigid/IMC One Hole Strap

Length = 2"

As per code: 1 strap is required first 3' and every 5' after



The current proposal is:

Preservation Department – Item 6, LPC-20-08115

**163 East 67th Street – Park East Synagogue,
Borough of Manhattan**

How to Testify Via Zoom:

<https://us02web.zoom.us/j/85235204043?pwd=UWtpd1hISjhpQ3R6VUNVS0pxd05zUT09>

Webinar ID: 852 3520 4043

Passcode: 866444

By Phone:

1 646-558-8656

US (New York) 877-853-5257 (Toll free)

US 888 475 4499 (Toll free)

Note: If you want to testify on an item, join the Zoom webinar at the agenda’s “Be Here by” time (about an hour in advance). When the Chair indicates it’s time to testify, “raise your hand” via the Zoom app if you want to speak (*9 on the phone). Those who signed up in advance will be called first.