

The current proposal is:

LPC-20-06239

1501 Broadway

Borough of Manhattan

How to Testify:

Via Zoom:

<https://us02web.zoom.us/j/86733570500?pwd=NzJMWHZ4YW16RUo0MIR5TjdVMkU3QT09>

Meeting ID: 823 3521 4741

Password: 890057

By Phone: 1 646-558-8656

US (New York) 877-853-5257 (Toll free)

US 888 475 4499 (Toll free)

1501 Broadway - New 43rd Street Marquee, Storefront & Signage

Community Board 5 Landmark Committee Presentation

February 4th, 2020

Landmarks Preservation Commission Public Hearing Presentation

March 17th, 2020



TOBIN | PARNES

WORKPLACE • HEALTHCARE • RETAIL • HOSPITALITY
 RESTAURANT • INSTITUTIONAL • HISTORIC RESTORATION • LEED
 233 BROADWAY, SUITE 2440 NEW YORK, NEW YORK 10279
 T 212-462-4600 F 212-462-4788 WWW.TOBINPARNES.COM

PROJECT:

New 43rd Street Marquee and Storefront

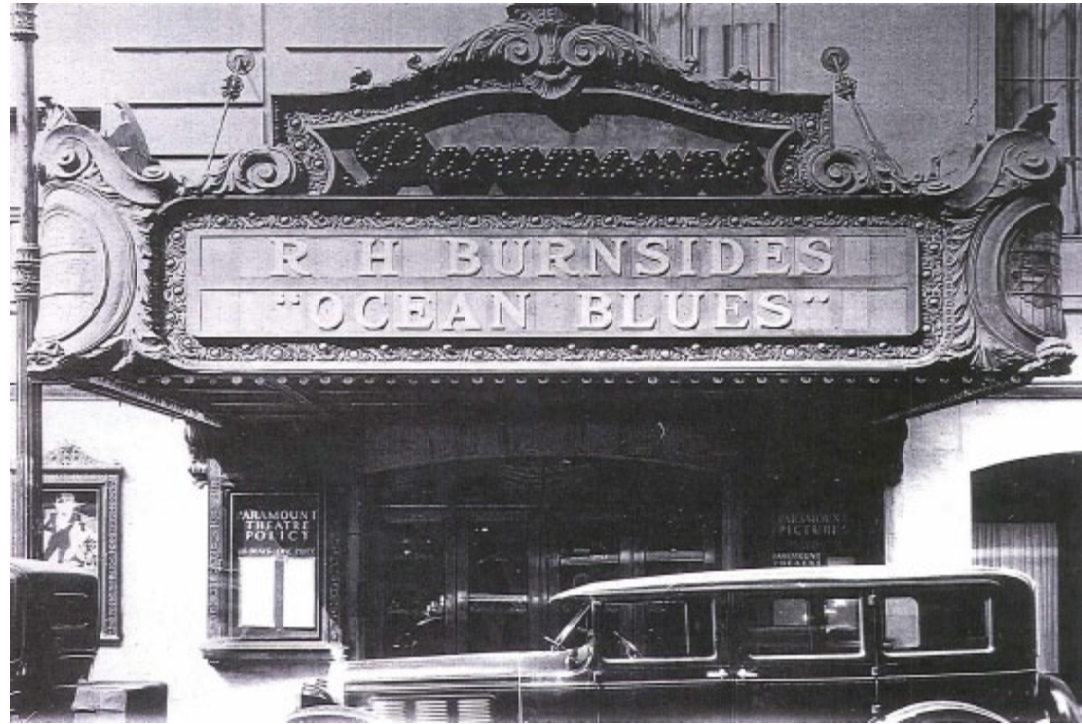
DRAWING TITLE:

Introduction Sheet

#	Submittals	Date	PROJECT NO. : 19173	DWG NO. :
1	Issued for CBS Review	2/04/20		A-0
2	Issued for LPC Review	2/25/20		
			SCALE: AS NOTED	
			DATE: 2/04/20	

TOBIN PARNES

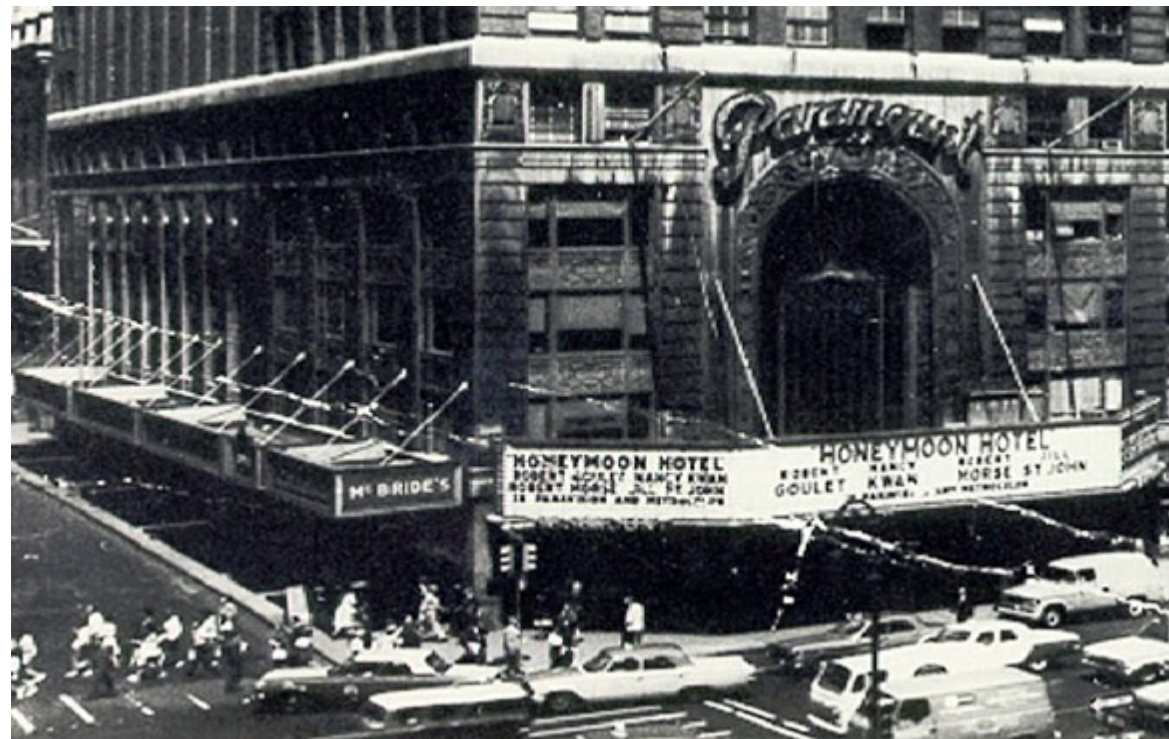
1501 Broadway - New 43rd Street Marquee, Storefront & Signage



1 Historic Street View @ 43rd Street Decorative Marquee (1927)
A-5 SCALE: Not to Scale

2 Historic Street View @ 43rd Street (1930)
A-5 SCALE: Not to Scale

3 Historic Street View @ 43rd Street (1930)
A-5 SCALE: Not to Scale



4 Historic Aerial View @ Broadway and 43rd Street Marquees (1964)
A-5 SCALE: Not to Scale

5 Historic Street View @ Broadway and 43rd Street Marquees (1961)
A-5 SCALE: Not to Scale

TOBIN | PARNES
 WORKPLACE • HEALTHCARE • RETAIL • HOSPITALITY
 RESTAURANT • INSTITUTIONAL • HISTORIC RESTORATION • LEED
 233 BROADWAY, SUITE 2440 NEW YORK, NEW YORK 10279
 T 212-462-4600 F 212-462-4788 www.tobinparnes.com

PROJECT: **New 43rd Street Marquee and Storefront**
 DRAWING TITLE: **Building Historic Photographs & Signage**

#	Submittals	Date	PROJECT NO. :19173	DWG NO. :
1	Issued for CB5 Review	2/04/20		A-5
2	Issued for LPC Review	2/25/20		
			SCALE: As Noted	
			DATE: 2/04/20	



43rd St Conceptual Exterior Signage
Close West View 01.29.16

All new signage shown in this conceptual rendering is subject to Landmarks Preservation Commission approval and may be modified or be deemed entirely. Both new marquee shown on this rendering have been approved in the configuration and size shown.

TOBIN | PARNES

304 Hudson St. Suite 500 | NY, NY 10013
T 212.462.4200 tobinparnes.com

TOBIN | PARNES

WORKPLACE • HEALTHCARE • RETAIL • HOSPITALITY
RESTAURANT • INSTITUTIONAL • HISTORIC RESTORATION • LEED
233 BROADWAY, SUITE 2440 NEW YORK, NEW YORK 10027-2502
T 212.462.4200 F 212.462.4788 www.tobinparnes.com

PROJECT:

New 43rd Street Marquee and Storefront

DRAWING TITLE:

Former Approved Rendering, ca. 2014 & 2017

#	Submittals	Date	PROJECT NO. : 19173	DWG NO. :
1	Issued for CBS Review	2/04/20		A-1
2	Issued for LPC Review	2/25/20		
			SCALE: AS NOTED	
			DATE: 2/04/20	

TOBIN | PARNES

1501 Broadway - New 43rd Street Marquee, Storefront & Signage



TOBIN | PARNES

WORKPLACE • HEALTHCARE • RETAIL • HOSPITALITY
 RESTAURANT • INSTITUTIONAL • HISTORIC RESTORATION • LEED
 233 BROADWAY, SUITE 2440 NEW YORK, NEW YORK 10279-2302
 T 212-462-4200 F 212-462-4788 WWW.TOBINPARNES.COM

PROJECT:

New 43rd Street Marquee and Storefront

DRAWING TITLE:

Existing 43rd Street Northwest Street View

#	Submittals	Date	PROJECT NO. : 19173	DWG NO. :
1	Issued for CBS Review	2/04/20		A-2
2	Issued for LPC Review	2/25/20		
			SCALE: AS NOTED	
			DATE: 2/04/20	

TOBIN PARNES

1501 Broadway - New 43rd Street Marquee, Storefront & Signage



TOBIN | PARNES

WORKPLACE • HEALTHCARE • RETAIL • HOSPITALITY
 RESTAURANT • INSTITUTIONAL • HISTORIC RESTORATION • LEED
 233 BROADWAY, SUITE 2440 NEW YORK, NEW YORK 10279-2302
 T 212-462-4000 F 212-462-4788 WWW.TOBINPARNES.COM

PROJECT:

New 43rd Street Marquee and Storefront

DRAWING TITLE:

Existing 43rd Street Northeast Street View

#	Submittals	Date	PROJECT NO. : 19173	DWG NO. :
1	Issued for CB5 Review	2/04/20		A-3
2	Issued for LPC Review	2/25/20		
			SCALE: AS NOTED	
			DATE: 2/04/20	

TOBIN | PARNES

1501 Broadway - New 43rd Street Marquee, Storefront & Signage



TOBIN | PARNES

WORKPLACE • HEALTHCARE • RETAIL • HOSPITALITY
 RESTAURANT • INSTITUTIONAL • HISTORIC RESTORATION • LEED
 233 BROADWAY, SUITE 2440 NEW YORK, NEW YORK 10279-2502
 T 212.462.4000 F 212.462.4788 www.tobinparnes.com

PROJECT:

New 43rd Street Marquee and Storefront

DRAWING TITLE:

Existing 43rd Street Proposed Street View

#	Submittals	Date	PROJECT NO. : 19173	DWG NO. :
1	Issued for CBS Review	2/04/20	SCALE: AS NOTED	A-4
2	Issued for LPC Review	2/25/20		
			DATE: 2/04/20	

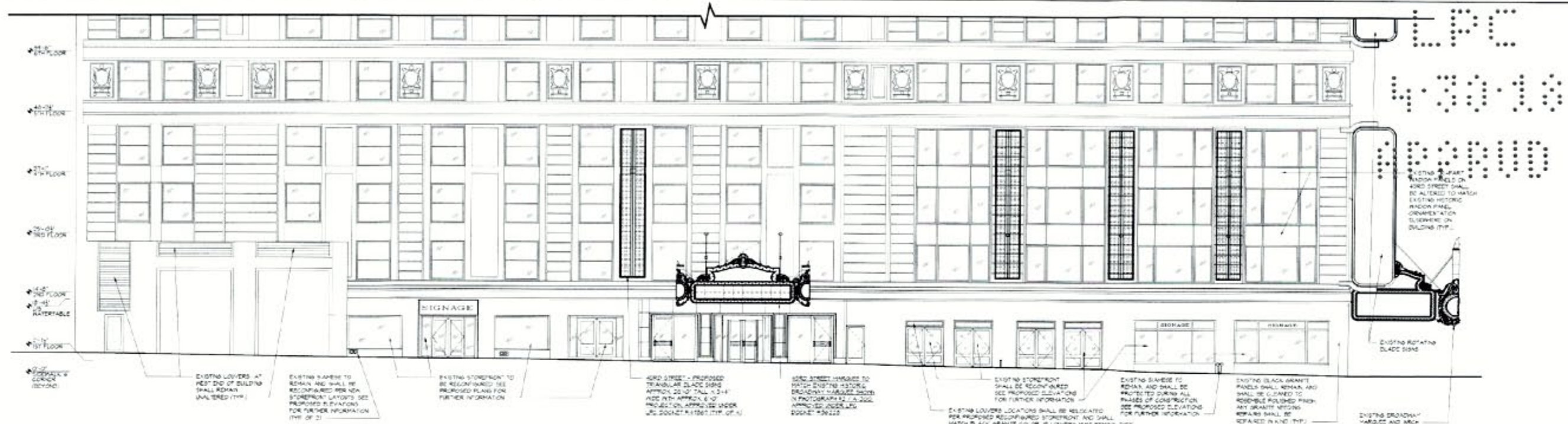
TOBIN | PARNES

1501 Broadway - New 43rd Street Marquee, Storefront & Signage

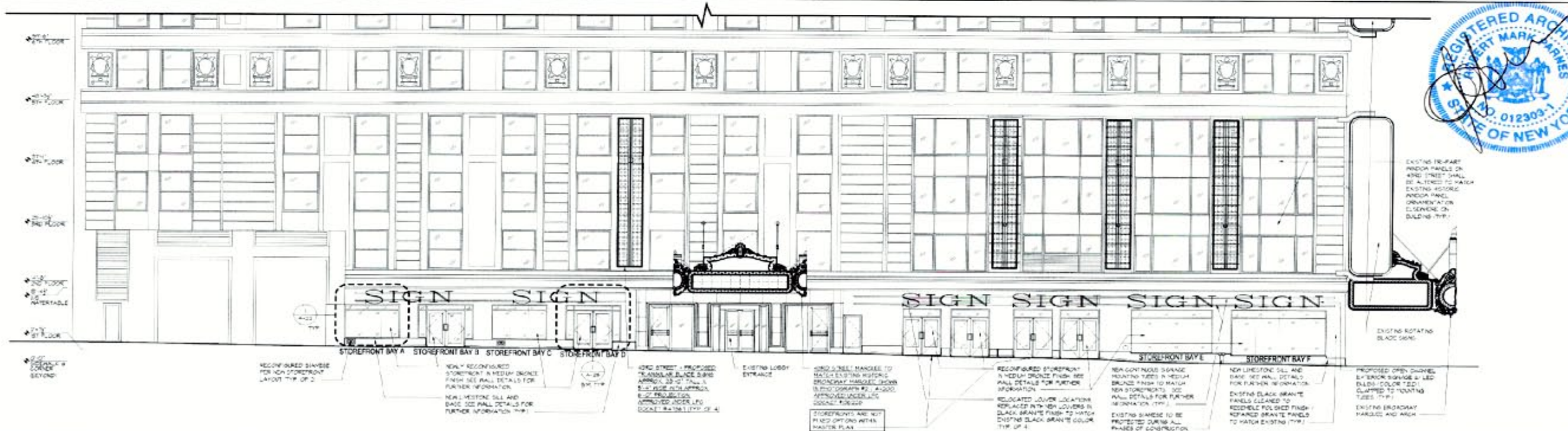
Proposed changes to Certificate of Appropriateness 19-21562 issued on April 30, 2018, to supersede the previous Master Plan and Miscellaneous / Amendment issued on August 28, 2019, amending the Master Plan

- **Altering the 43rd Street facade to include narrowing the easternmost signage tube rails to 1'-2" from 1'-6" to provide the code required 10'-0" minimum clearance to the sidewalk; reducing the maximum height of the signage lettering from 5'-0" to 3'-6";**
- **At the four westernmost bays (Storefront Bays A through D), to accommodate the upward slope of the sidewalk, raising the height of each 9'-0" wide storefront bay by 1'-10" to incorporate transoms resulting in storefronts proportional to those else where in building;**
- **Raising the installation height of the signage tube rails, the upper rail to the limestone bandcourse, the lower rail sufficiently enough to provide the code required 10'-0" minimum clearance to the sidewalk.**
- **Two options for the Master Plan at for Bays A through D:**
 - Option A: Install a Marquee with illuminated LED screens at three sides over Storefront B, and installing signage tube rails with one (1) sign spanning over Storefront Bays C and D**
 - Option B: Not installing a Marquee and installing signage tube rails throughout with two (2) signs spanning over Storefront Bays A-B and B-C.**
- **Background: The Marquee in question has in the past been approved by the Commission under Certificate of Appropriateness 16-3982 issued on October 20, 2014 for installing two (2) LED illuminated marquees at the ground floor of the West 43rd Street elevation among other work, which was amended by Miscellaneous/Amendment 19-14223 issued on July 11, 2017 to install only one (1) illuminated marquee at the West 43rd Street facade.**

8

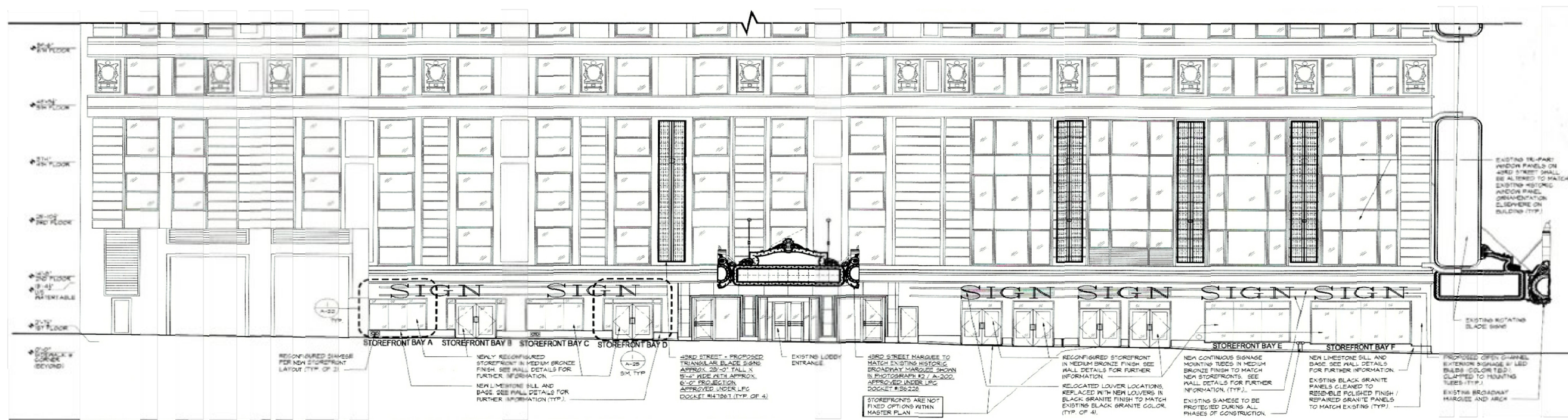


1 Elevation, View # - 43rd Street Storefronts (Present Day)
A-2 SCALE 1/8"=1'-0"

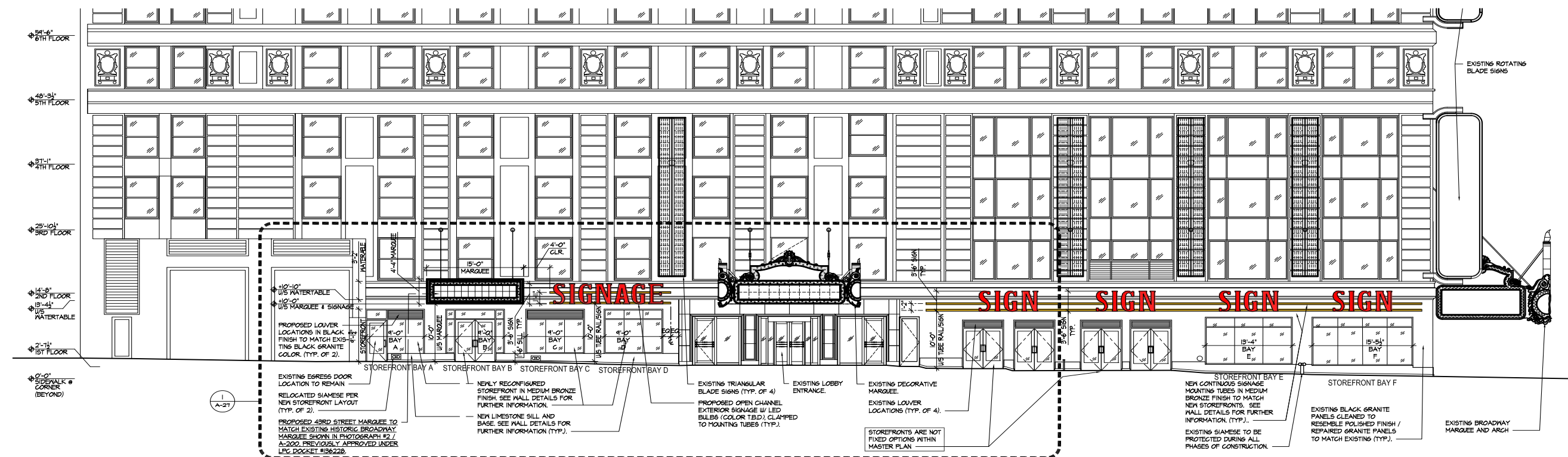


2 Elevation, View # - 43rd Street Storefronts (Proposed)
A-2 SCALE 1/8"=1'-0"

TOBIN PARNES WORKPLACE • RESIDENTIAL • RETAIL • HOUSING RESTAURANT • INSTITUTIONAL • OFFICE • EDUCATION • CIVIC 100 HANCOCK STREET, SUITE 200 • NEW YORK, NEW YORK 10013 T 212 402 4000 • F 212 402 4000 • WWW.TOBINPARNES.COM	PROJECT: 1501 Bway - Storefront & Signage Master Plan	DWG NO.: A-12
	DRAWING TITLE: Before and After Ground Floor Storefront Elevation-43rd St	
SUBMITTALS 1 Issued for CBS Review 10/31/17 2 Issued for LPC Review 11/22/17 3 Issued for LPC Filing 1/30/18 4 Issued for LPC Filing 4/04/18 5 Issued for LPC Filing 4/23/18		DWG NO.: A-12



1 Master Plan Approved 43rd Street Elevation (4.30.18)
A-26 SCALE: Not to Scale



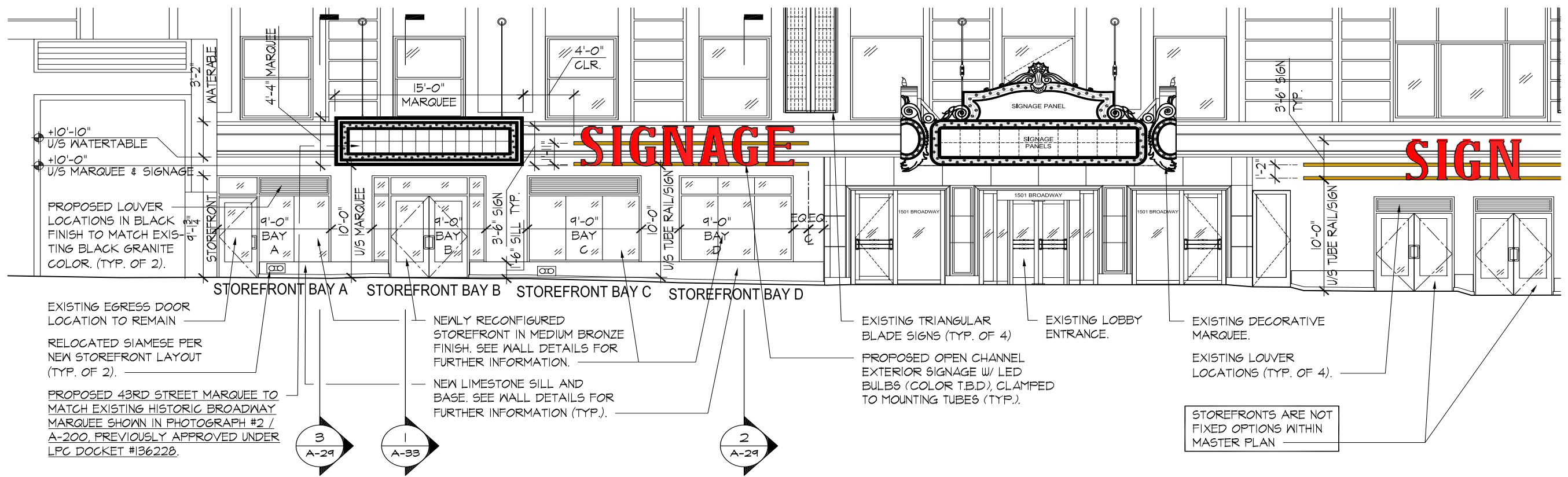
2 Proposed 43rd Street Elevation
A-26 SCALE: Not to Scale

TOBIN | PARNES
 WORKPLACE • HEALTHCARE • RETAIL • HOSPITALITY
 RESTAURANT • INSTITUTIONAL • HISTORIC RESTORATION • LEED
 233 BROADWAY, SUITE 2440 NEW YORK, NEW YORK 10279-2302
 T 212-462-4200 F 212-462-4788 WWW.TOBINPARNES.COM

PROJECT:
DRAWING TITLE:

**New 43rd Street Marquee and Storefront
 Master Plan Approval & Proposed Layout**

#	Submittals	Date	PROJECT NO. : 19173	DWG NO. :
1	Issued for CBS Review	2/04/20		A-26
2	Issued for LPC Review	2/25/20		
			SCALE: AS NOTED	
			DATE: 2/04/20	



EXISTING EGRESS DOOR LOCATION TO REMAIN
 RELOCATED SIAMESE PER NEW STOREFRONT LAYOUT (TYP. OF 2).

PROPOSED 43RD STREET MARQUEE TO MATCH EXISTING HISTORIC BROADWAY MARQUEE SHOWN IN PHOTOGRAPH #2 / A-200, PREVIOUSLY APPROVED UNDER LPC DOCKET #136220.

3
A-29

1
A-33

NEWLY RECONFIGURED STOREFRONT IN MEDIUM BRONZE FINISH. SEE WALL DETAILS FOR FURTHER INFORMATION.
 NEW LIMESTONE SILL AND BASE. SEE WALL DETAILS FOR FURTHER INFORMATION (TYP.).

2
A-29

EXISTING TRIANGULAR BLADE SIGNS (TYP. OF 4)
 PROPOSED OPEN CHANNEL EXTERIOR SIGNAGE W/ LED BULBS (COLOR T.B.D), CLAMPED TO MOUNTING TUBES (TYP.).

EXISTING LOBBY ENTRANCE.

EXISTING DECORATIVE MARQUEE.
 EXISTING LOUVER LOCATIONS (TYP. OF 4).
 STOREFRONTS ARE NOT FIXED OPTIONS WITHIN MASTER PLAN

2 Proposed 43rd Street Elevation
 A-21 SCALE: Not to Scale

TOBIN | PARNES
 WORKPLACE • HEALTHCARE • RETAIL • HOSPITALITY
 RESTAURANT • INSTITUTIONAL • HISTORIC RESTORATION • LEED
 233 BROADWAY, SUITE 2440 NEW YORK, NEW YORK 10279-3502
 T 212-462-4600 F 212-462-4788 WWW.TOBINPARNES.COM

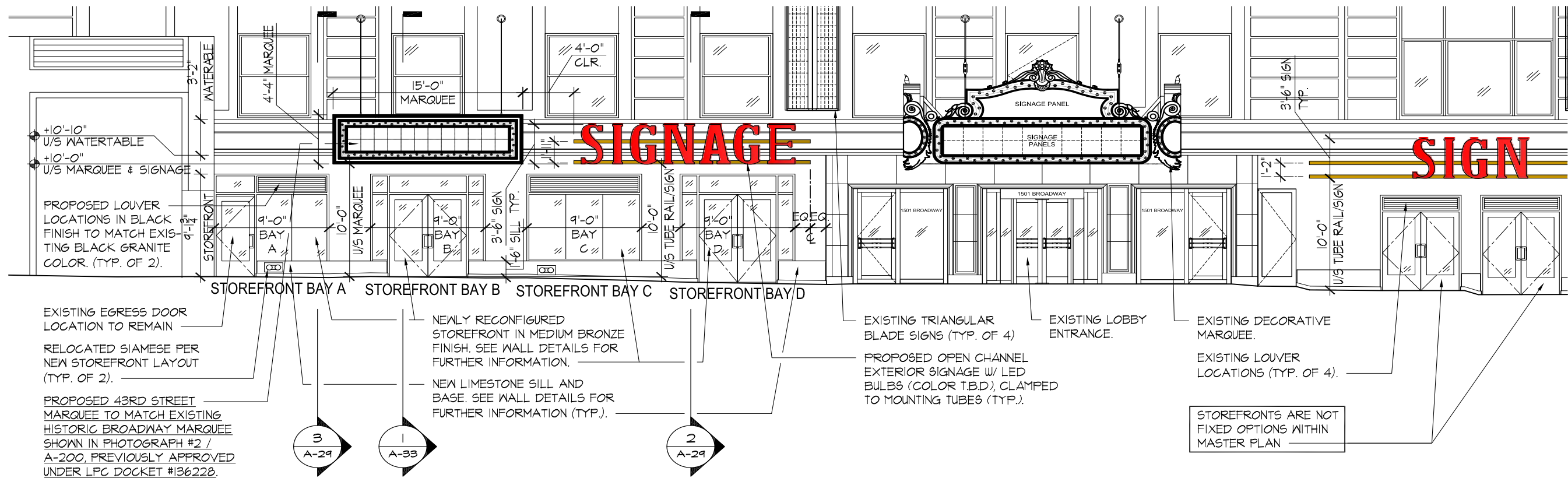
PROJECT:
 DRAWING TITLE:

New 43rd Street Marquee and Storefront
 Proposed 43rd Street Elevation - (1) Tenant

#	Submittals	Date
1	Issued for CB5 Review	2/04/20
2	Issued for LPC Review	2/25/20

PROJECT NO.: 19173
 SCALE: AS NOTED
 DATE: 2/04/20

DWG NO.:
A-27



EXISTING EGRESS DOOR LOCATION TO REMAIN

RELOCATED SIAMESE PER NEW STOREFRONT LAYOUT (TYP. OF 2).

PROPOSED 43RD STREET MARQUEE TO MATCH EXISTING HISTORIC BROADWAY MARQUEE SHOWN IN PHOTOGRAPH #2 / A-200, PREVIOUSLY APPROVED UNDER LPC DOCKET #136220.

NEWLY RECONFIGURED STOREFRONT IN MEDIUM BRONZE FINISH. SEE WALL DETAILS FOR FURTHER INFORMATION.

NEW LIMESTONE SILL AND BASE. SEE WALL DETAILS FOR FURTHER INFORMATION (TYP.).

EXISTING TRIANGULAR BLADE SIGNS (TYP. OF 4)

PROPOSED OPEN CHANNEL EXTERIOR SIGNAGE W/ LED BULBS (COLOR T.B.D), CLAMPED TO MOUNTING TUBES (TYP.).

EXISTING LOBBY ENTRANCE.

EXISTING DECORATIVE MARQUEE.

EXISTING LOUVER LOCATIONS (TYP. OF 4).

STOREFRONTS ARE NOT FIXED OPTIONS WITHIN MASTER PLAN

3
A-29

1
A-33

2
A-29

2 Proposed 43rd Street Elevation
A-28a SCALE: Not to Scale

TOBIN | PARNES

WORKPLACE • HEALTHCARE • RETAIL • HOSPITALITY
RESTAURANT • INSTITUTIONAL • HISTORIC RESTORATION • LEED
233 BROADWAY, SUITE 2440 NEW YORK, NEW YORK 10279-2502
T 212.462.4200 F 212.462.4788 WWW.TOBINPARNES.COM

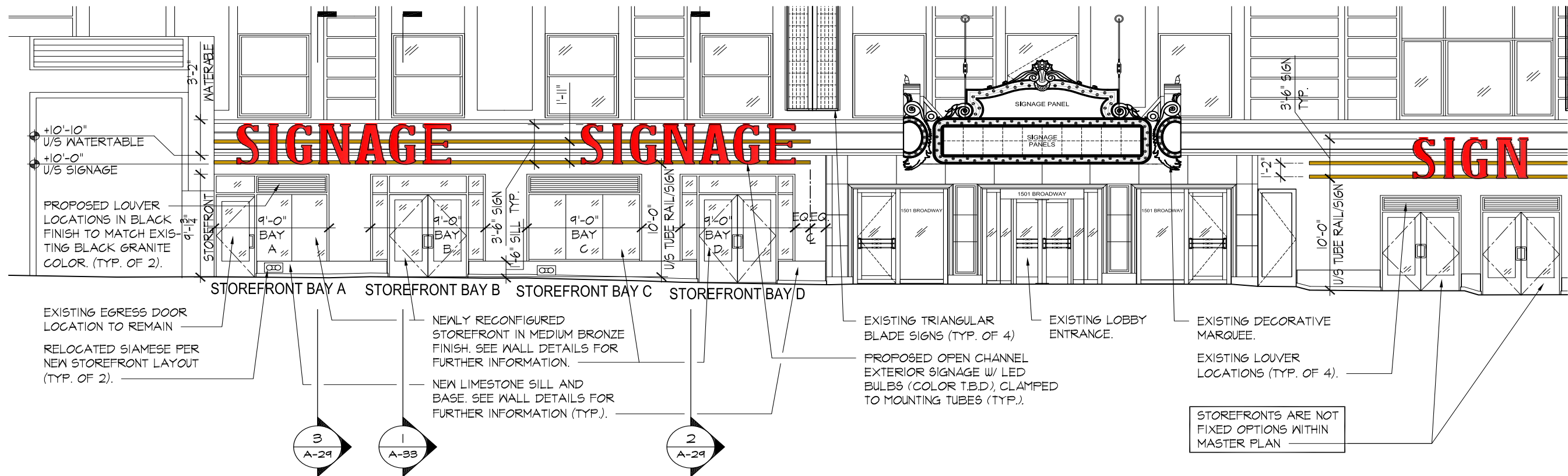
PROJECT:

New 43rd Street Marquee and Storefront

DRAWING TITLE:

Proposed 43rd Street Elevation - (2) Tenants

#	Submittals	Date	PROJECT NO. :19173	DWG NO. :
1	Issued for CB5 Review	2/04/20		A-28a
2	Issued for LPC Review	2/25/20		
			SCALE: AS NOTED	
			DATE: 2/04/20	



2 Proposed 43rd Street Elevation
A-28b SCALE: Not to Scale

TOBIN | PARNES

WORKPLACE • HEALTHCARE • RETAIL • HOSPITALITY
RESTAURANT • INSTITUTIONAL • HISTORIC RESTORATION • LEED
233 BROADWAY, SUITE 2440 NEW YORK, NEW YORK 10279-2502
T 212 462 4200 F 212 462 4788 www.tobinparnes.com

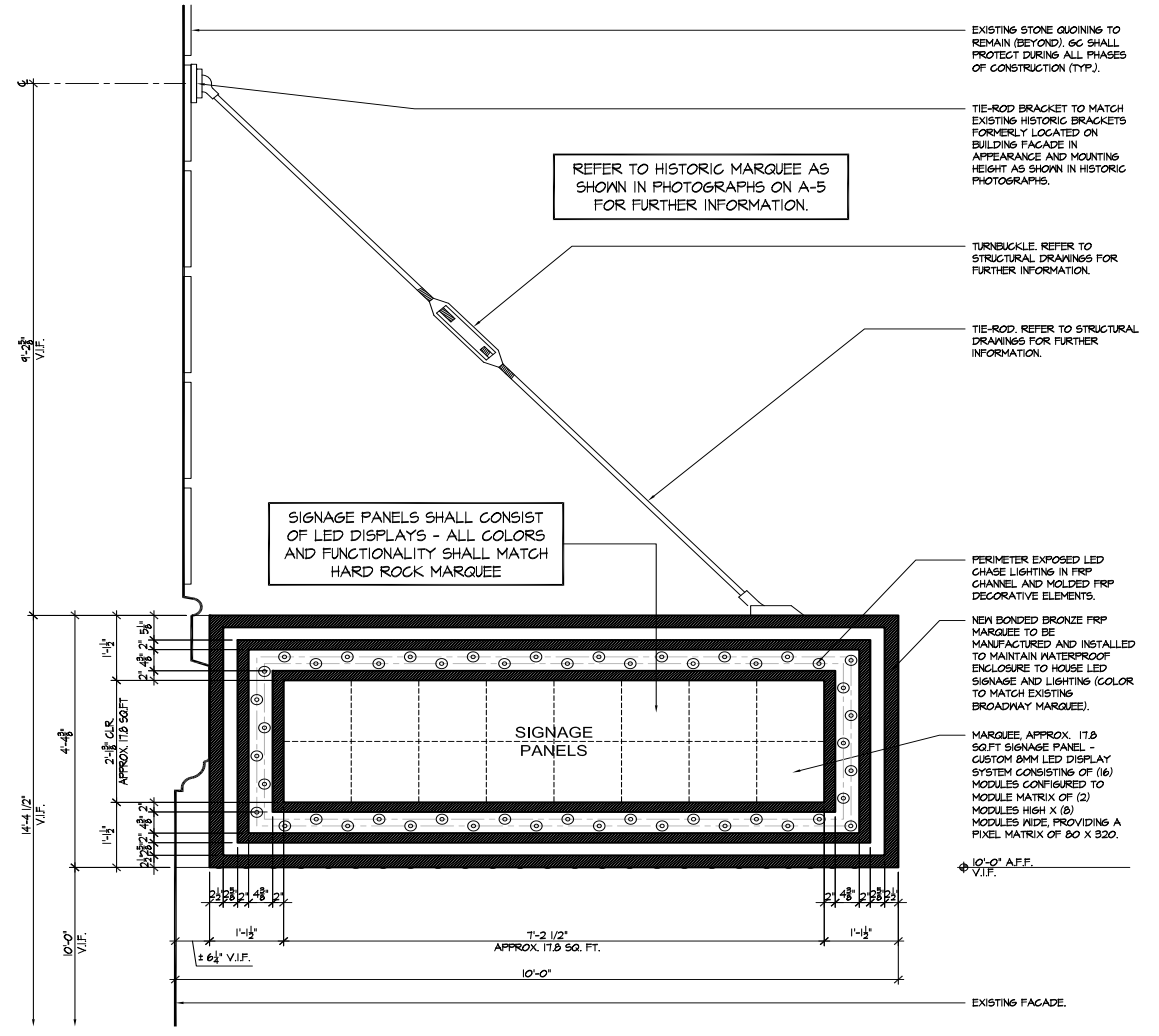
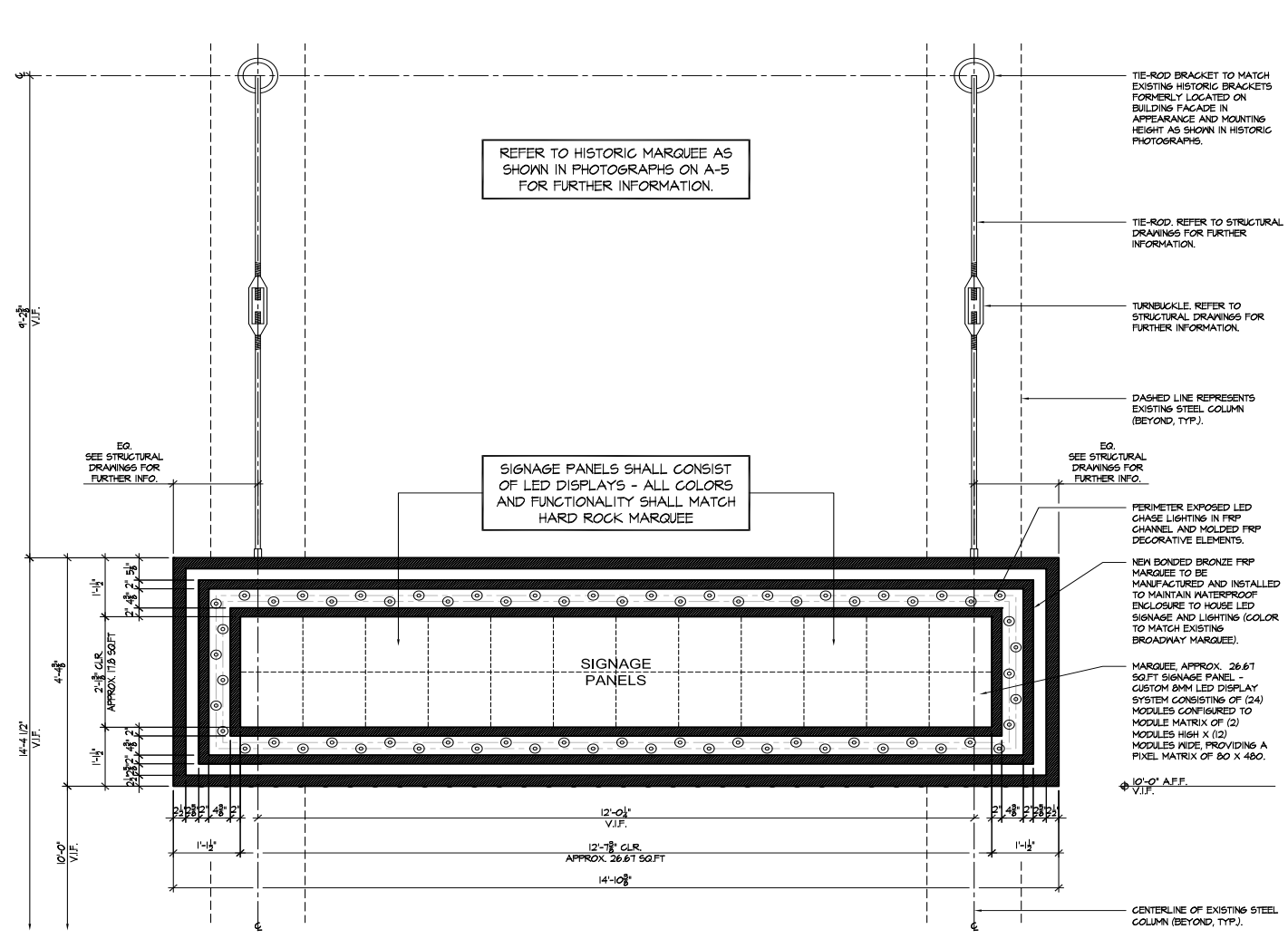
PROJECT:

New 43rd Street Marquee and Storefront

DRAWING TITLE:

Proposed 43rd Street Elevation - (2) Tenants

#	Submittals	Date	PROJECT NO. :19173	DWG NO. :
1	Issued for CB5 Review	2/04/20		A-28b
2	Issued for LPC Review	2/25/20		
			SCALE: AS NOTED	
			DATE: 2/04/20	



REFER TO HISTORIC MARQUEE AS SHOWN IN PHOTOGRAPHS ON A-5 FOR FURTHER INFORMATION.

REFER TO HISTORIC MARQUEE AS SHOWN IN PHOTOGRAPHS ON A-5 FOR FURTHER INFORMATION.

SIGNAGE PANELS SHALL CONSIST OF LED DISPLAYS - ALL COLORS AND FUNCTIONALITY SHALL MATCH HARD ROCK MARQUEE

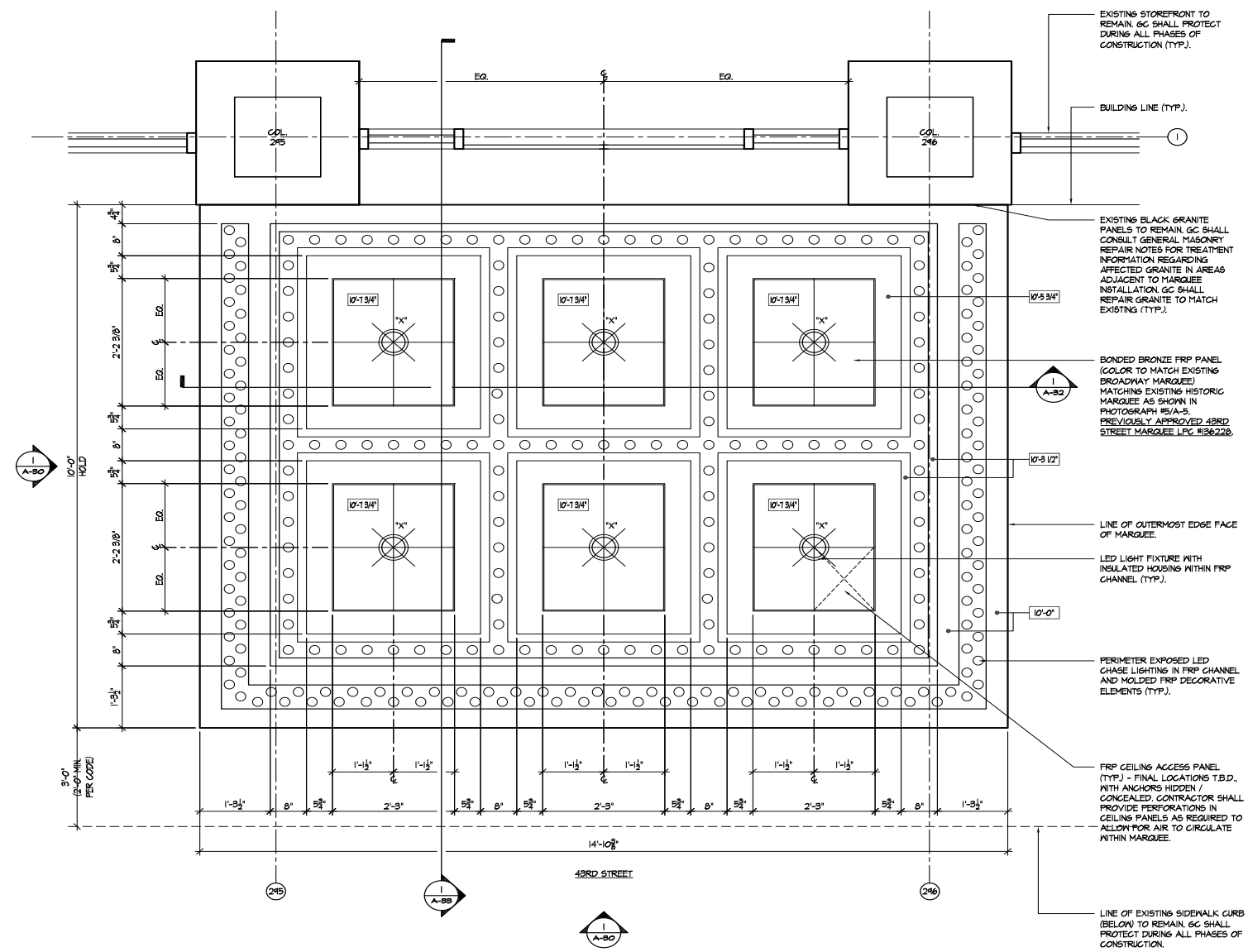
SIGNAGE PANELS SHALL CONSIST OF LED DISPLAYS - ALL COLORS AND FUNCTIONALITY SHALL MATCH HARD ROCK MARQUEE

1 Proposed Marquee Elevations
A-30 SCALE: 3/4" = 1'-0"

TOBIN | PARNES
 WORKPLACE • HEALTHCARE • RETAIL • HOSPITALITY
 RESTAURANT • INSTITUTIONAL • HISTORIC RESTORATION • LEED
 233 BROADWAY, SUITE 2440 NEW YORK, NEW YORK 10279-2502
 T 212.462.4200 F 212.462.4788 www.tobinparnes.com

PROJECT: **New 43rd Street Marquee and Storefront**
 DRAWING TITLE: **Proposed Elevations @ Marquee**

#	Submittals	Date	PROJECT NO. : 19173	DWG NO. :
1	Issued for LPC Review	3/17/20	SCALE: AS NOTED	A-30
			DATE: 2/04/20	



EXISTING STOREFRONT TO REMAIN. GC SHALL PROTECT DURING ALL PHASES OF CONSTRUCTION (TYP.).

BUILDING LINE (TYP.).

EXISTING BLACK GRANITE PANELS TO REMAIN. GC SHALL CONSULT GENERAL MASONRY REPAIR NOTES FOR TREATMENT INFORMATION REGARDING AFFECTED GRANITE IN AREAS ADJACENT TO MARQUEE INSTALLATION. GC SHALL REPAIR GRANITE TO MATCH EXISTING (TYP.).

BONDED BRONZE FRP PANEL (COLOR TO MATCH EXISTING BROADWAY MARQUEE) MATCHING EXISTING HISTORIC MARQUEE AS SHOWN IN PHOTOGRAPH 15/A-5, PREVIOUSLY APPROVED 43RD STREET MARQUEE LPC #136228.

LED LIGHT FIXTURE WITH INSULATED HOUSING WITHIN FRP CHANNEL (TYP.).

PERIMETER EXPOSED LED CHASE LIGHTING IN FRP CHANNEL AND MOLDED FRP DECORATIVE ELEMENTS (TYP.).

FRP CEILING ACCESS PANEL (TYP.) - FINAL LOCATIONS T.B.D., WITH ANCHORS HIDDEN / CONCEALED. CONTRACTOR SHALL PROVIDE PERFORATIONS IN CEILING PANELS AS REQUIRED TO ALLOW FOR AIR TO CIRCULATE WITHIN MARQUEE.

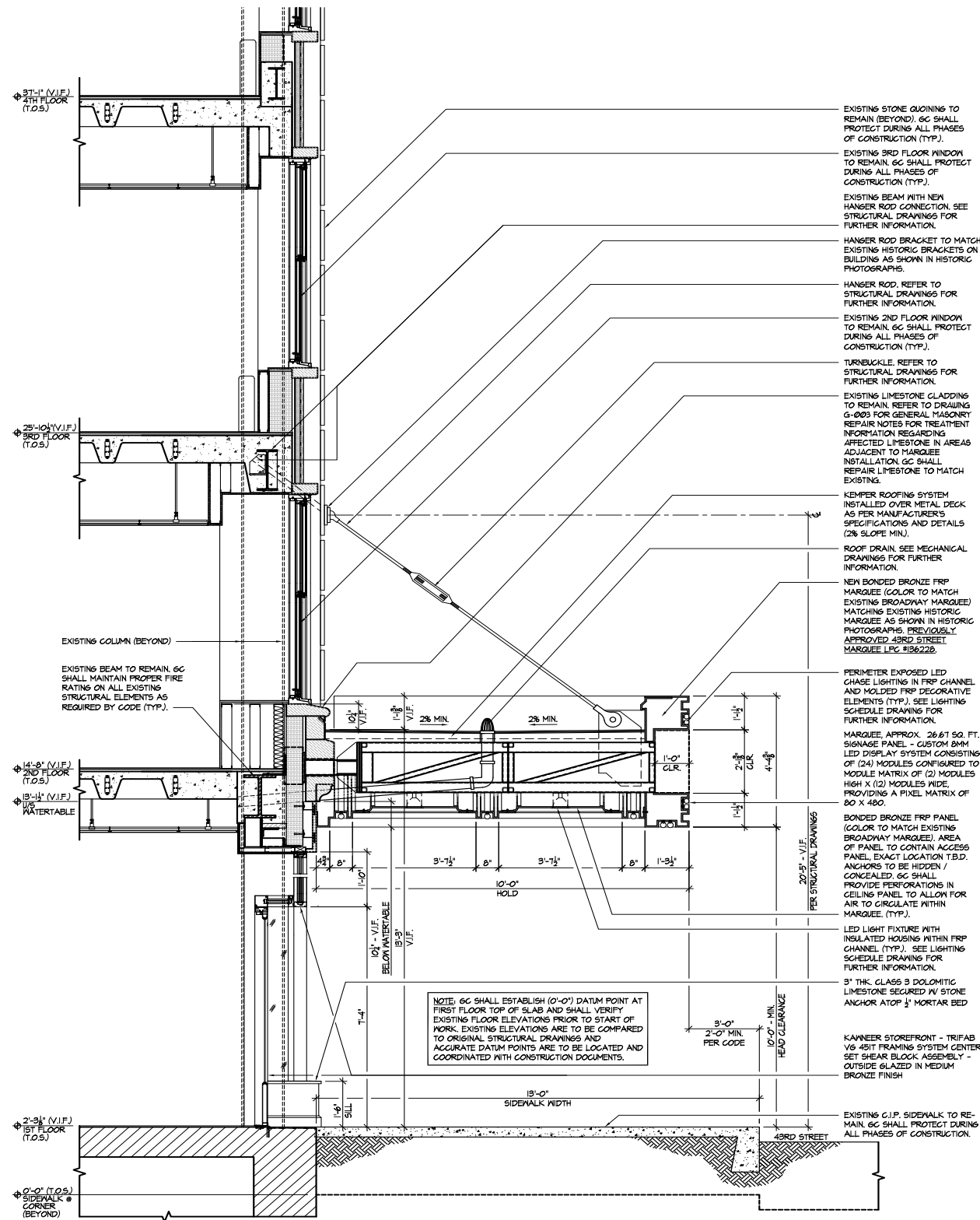
LINE OF EXISTING SIDEWALK CURB (BELOW) TO REMAIN. GC SHALL PROTECT DURING ALL PHASES OF CONSTRUCTION.

Proposed Marquee Reflected Ceiling Plan
SCALE: 3/4" = 1'-0"

TOBIN | PARNES
 WORKPLACE • HEALTHCARE • RETAIL • HOSPITALITY
 RESTAURANT • INSTITUTIONAL • HISTORIC RESTORATION • LEED
 233 BROADWAY, SUITE 2440 NEW YORK, NEW YORK 10279-2502
 T 212.462.4200 F 212.462.4788 www.tobinparnes.com

PROJECT:	New 43rd Street Marquee and Storefront		
DRAWING TITLE:	Proposed Marquee Reflected Ceiling Plan		

#	Submittals	Date	PROJECT NO. : 19173	DWG NO. :
1	Issued for LPC Review	3/17/20		A-31
			SCALE: AS NOTED	
			DATE: 3/17/20	



EXISTING STONE QUOINING TO REMAIN (BEYOND). GC SHALL PROTECT DURING ALL PHASES OF CONSTRUCTION (TYP.).

EXISTING 3RD FLOOR WINDOW TO REMAIN. GC SHALL PROTECT DURING ALL PHASES OF CONSTRUCTION (TYP.).

EXISTING BEAM WITH NEW HANGER ROD CONNECTION. SEE STRUCTURAL DRAWINGS FOR FURTHER INFORMATION.

HANGER ROD BRACKET TO MATCH EXISTING HISTORIC BRACKETS ON BUILDING AS SHOWN IN HISTORIC PHOTOGRAPHS.

HANGER ROD. REFER TO STRUCTURAL DRAWINGS FOR FURTHER INFORMATION.

EXISTING 2ND FLOOR WINDOW TO REMAIN. GC SHALL PROTECT DURING ALL PHASES OF CONSTRUCTION (TYP.).

TURNECKLE. REFER TO STRUCTURAL DRAWINGS FOR FURTHER INFORMATION.

EXISTING LIMESTONE CLADDING TO REMAIN. REFER TO DRAWING G-003 FOR GENERAL MASONRY REPAIR NOTES FOR TREATMENT INFORMATION REGARDING AFFECTED LIMESTONE IN AREAS ADJACENT TO MARQUEE. INSTALLATION GC SHALL REPAIR LIMESTONE TO MATCH EXISTING.

KIEWIT ROOFING SYSTEM. INSTALLED OVER METAL DECK AS PER MANUFACTURER'S SPECIFICATIONS AND DETAILS (2% SLOPE MIN.).

ROOF DRAIN. SEE MECHANICAL DRAWINGS FOR FURTHER INFORMATION.

NEW BONDED BRONZE FRP MARQUEE (COLOR TO MATCH EXISTING BROADWAY MARQUEE) MATCHING EXISTING HISTORIC MARQUEE AS SHOWN IN HISTORIC PHOTOGRAPHS. PREVIOUSLY APPROVED 43RD STREET MARQUEE LPC #156228.

PERIMETER EXPOSED LED CHASE LIGHTING IN FRP CHANNEL AND MOLDED FRP DECORATIVE ELEMENTS (TYP.). SEE LIGHTING SCHEDULE DRAWING FOR FURTHER INFORMATION.

MARQUEE APPROX. 26.61 SQ. FT. SIGNAGE PANEL - CUSTOM 8MM LED DISPLAY SYSTEM CONSISTING OF (24) MODULES CONFIGURED TO MODULE MATRIX OF (2) MODULES HIGH X (2) MODULES WIDE. PROVIDING A PIXEL MATRIX OF 60 X 480.

BONDED BRONZE FRP PANEL (COLOR TO MATCH EXISTING BROADWAY MARQUEE). AREA OF PANEL TO CONTAIN ACCESS PANEL. EXACT LOCATION T.B.D. ANCHORS TO BE HIDDEN / CONCEALED. GC SHALL PROVIDE PERFORATIONS IN CEILING PANEL TO ALLOW FOR AIR TO CIRCULATE WITHIN MARQUEE (TYP.).

LED LIGHT FIXTURE WITH INSULATED HOUSING WITHIN FRP CHANNEL (TYP.). SEE LIGHTING SCHEDULE DRAWING FOR FURTHER INFORMATION.

3" THK. CLASS B DOLOMITIC LIMESTONE SECURED IN STONE ANCHOR ATOP 1" MORTAR BED

KIEWIT STOREFRONT - TRIFAB V6 451T FRAMING SYSTEM CENTER SET SHEAR BLOCK ASSEMBLY - OUTSIDE GLAZED IN MEDIUM BRONZE FINISH

EXISTING C.I.P. SIDEWALK TO REMAIN. GC SHALL PROTECT DURING ALL PHASES OF CONSTRUCTION.

NOTE: GC SHALL ESTABLISH (0'-0") DATUM POINT AT FIRST FLOOR TOP OF SLAB AND SHALL VERIFY EXISTING FLOOR ELEVATIONS PRIOR TO START OF WORK. EXISTING ELEVATIONS ARE TO BE COMPARED TO ORIGINAL STRUCTURAL DRAWINGS AND ACCURATE DATUM POINTS ARE TO BE LOCATED AND COORDINATED WITH CONSTRUCTION DOCUMENTS.

Proposed Section Detail @ New Marquee
A-33 SCALE: 1/2" = 1'-0"

TOBIN | PARNES

WORKPLACE • HEALTHCARE • RETAIL • HOSPITALITY
RESTAURANT • INSTITUTIONAL • HISTORIC RESTORATION • LEED

233 BROADWAY, SUITE 2440 NEW YORK, NEW YORK 10279-2502
T 212 462 4200 F 212 462 4788 www.tobinparnes.com

PROJECT: **New 43rd Street Marquee and Storefront**

DRAWING TITLE: **Proposed Section Detail @ Marquee**

#	Submittals	Date	PROJECT NO. :19173	DWG NO. :
1	Issued for CB5 Review	2/04/20		A-33
2	Issued for LPC Review	2/25/20		
			SCALE: AS NOTED	
			DATE: 2/04/20	



TOBIN | PARNES

TOBIN | PARNES

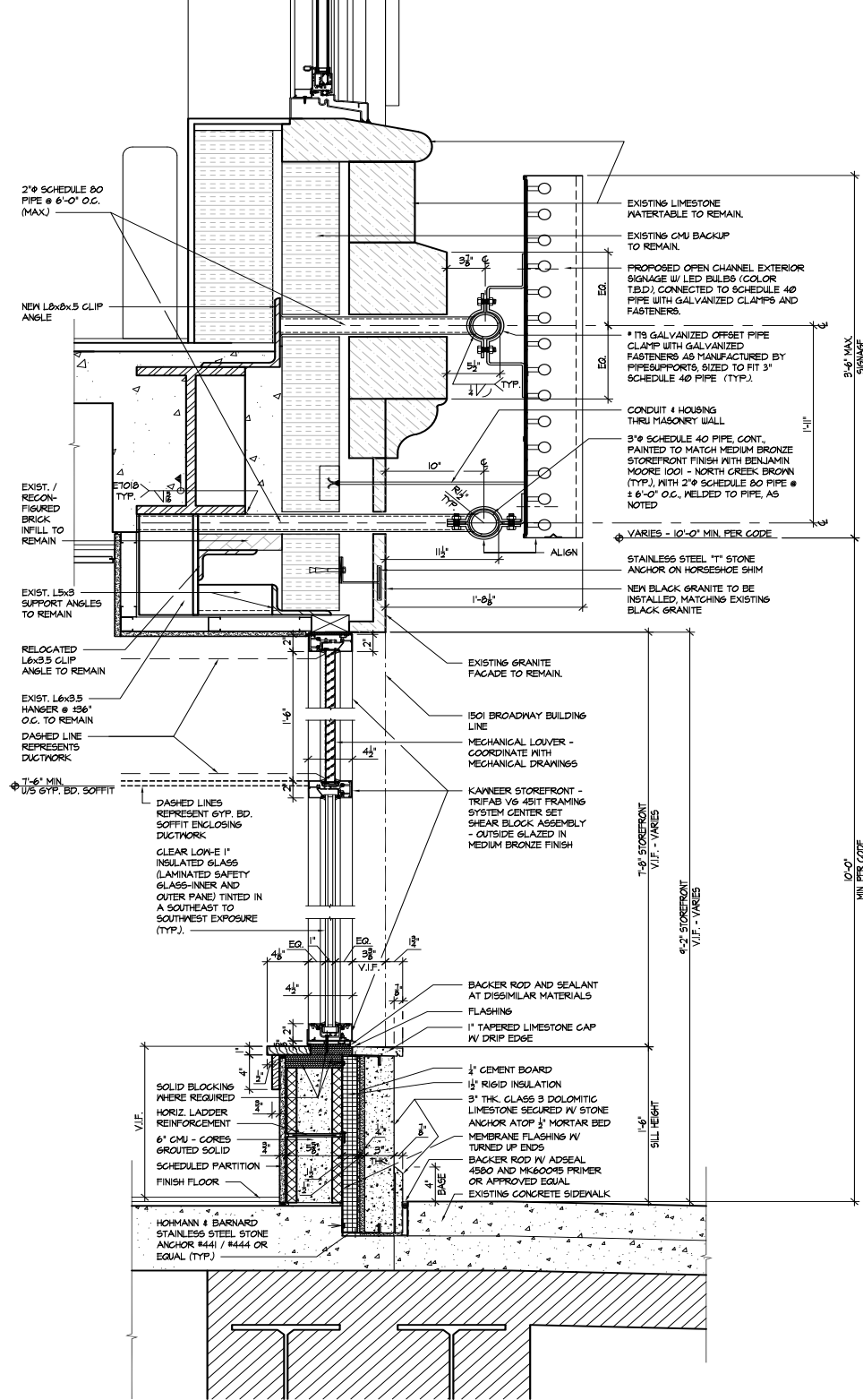
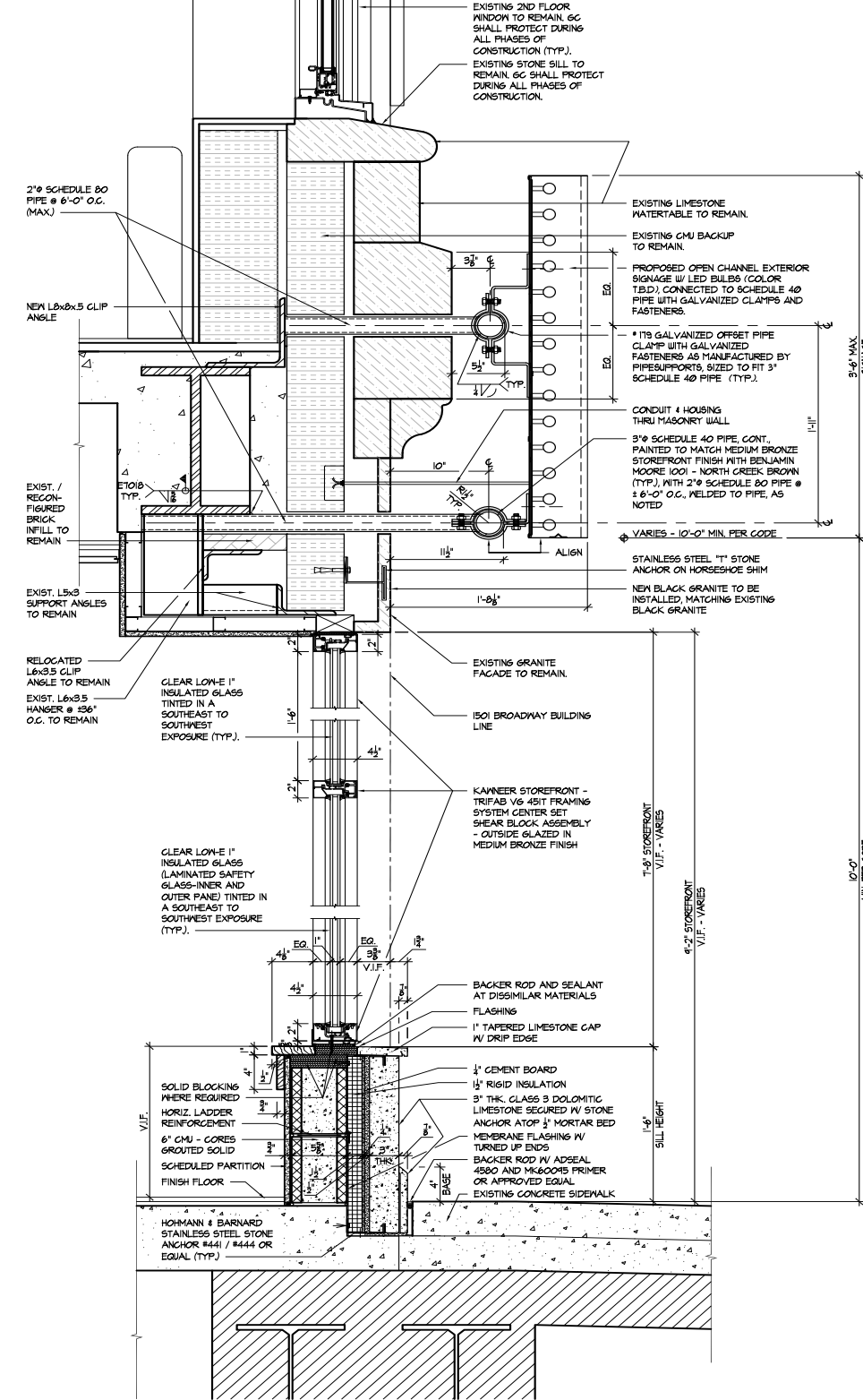
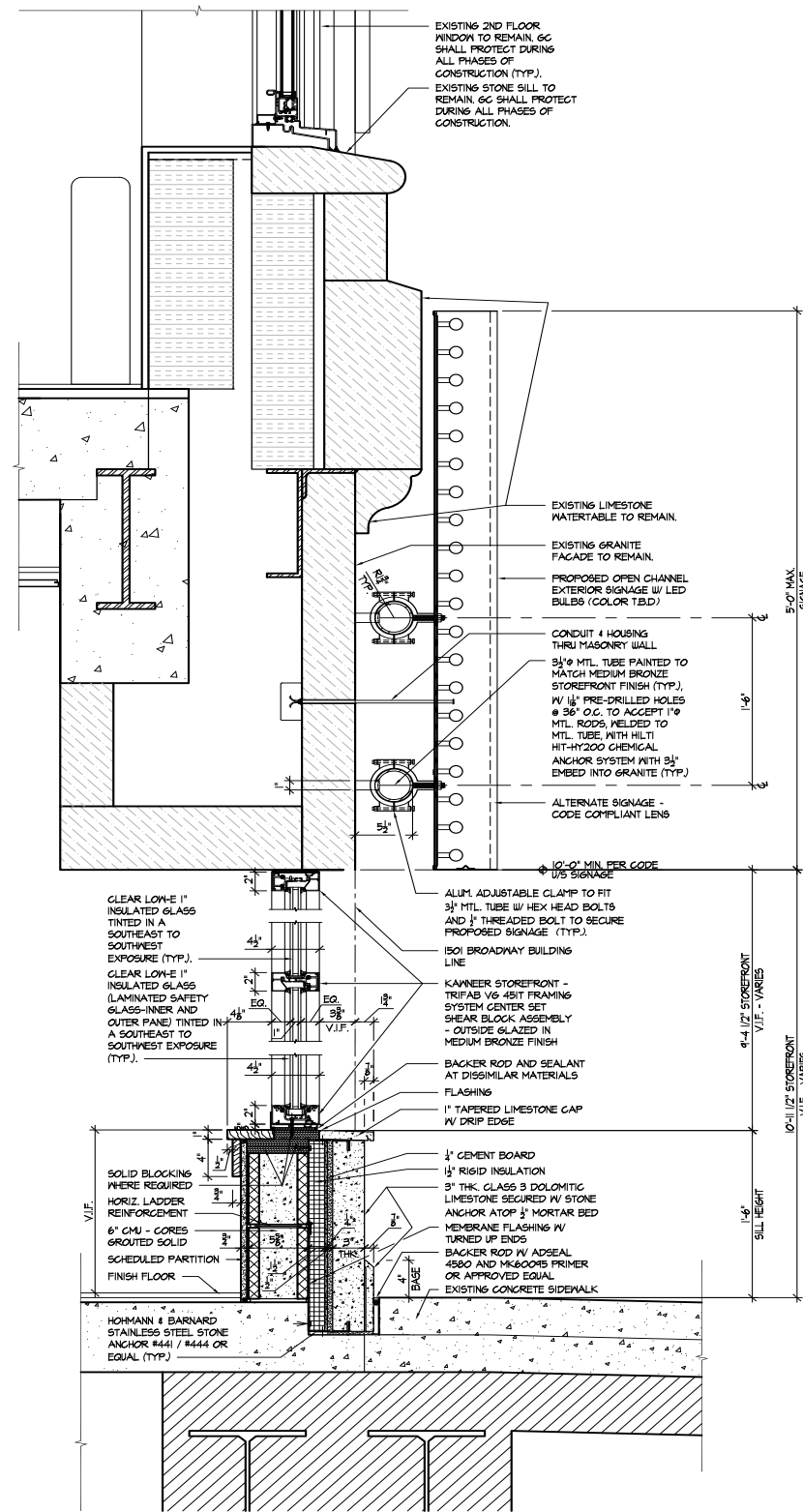
1501 Broadway - New 43rd Street Marquee, Storefront & Signage



CONCEPTUAL RENDERING

TOBIN | PARNES

1501 Broadway - New 43rd Street Marquee, Storefront & Signage



1 Section @ Storefront - Full Height Glass with Open Channel Illuminated Sign (Master Plan Approved) SCALE: 1/2" = 1'-0"
 2 Section @ Storefront - Revised Full Height Glass with Open Channel Illuminated Sign SCALE: 1/2" = 1'-0"
 3 Section @ Storefront - Revised Full Height Glass with Mechanical Louver and Open Channel Illuminated Sign SCALE: 1/2" = 1'-0"

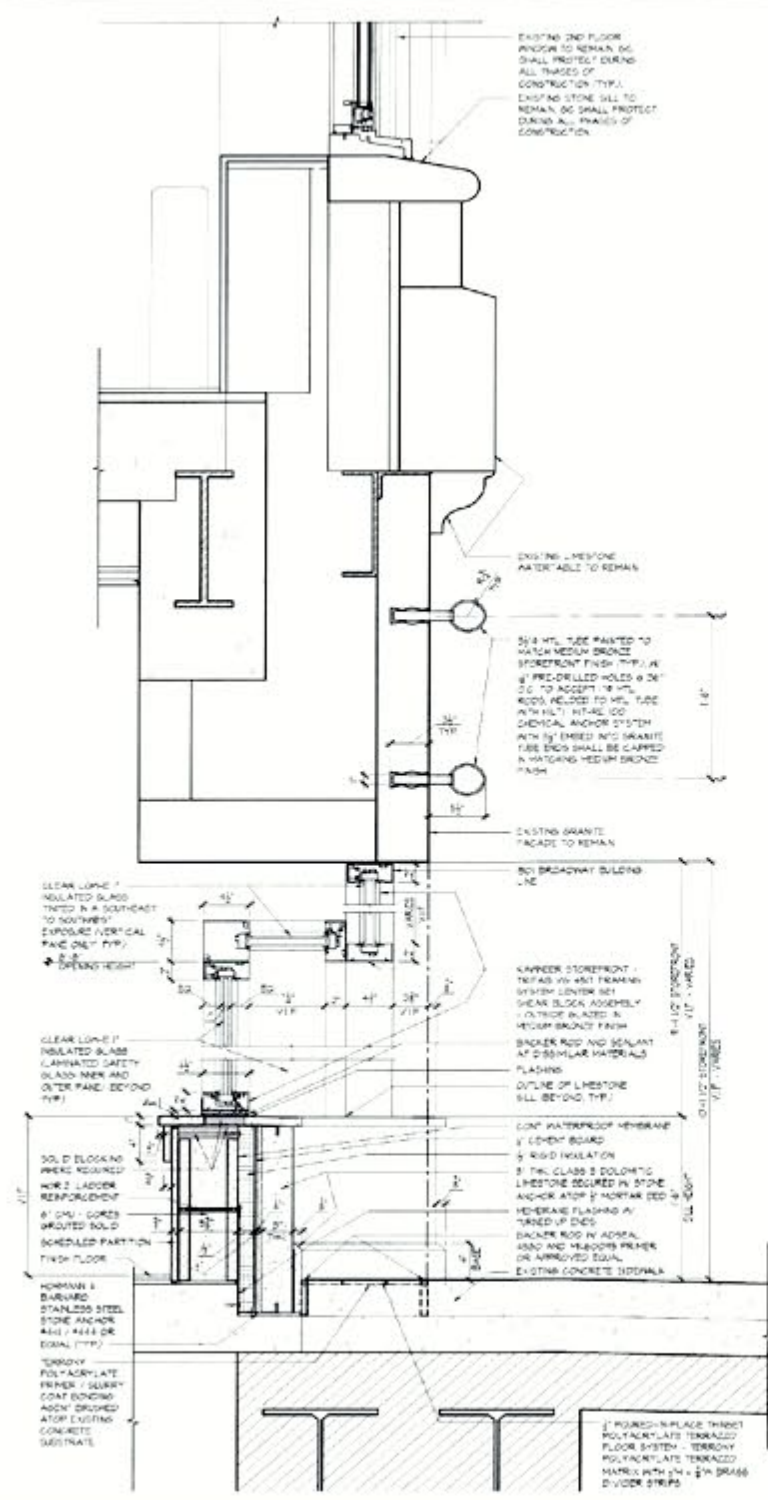
TOBIN | PARNES
 WORKPLACE • HEALTHCARE • RETAIL • HOSPITALITY
 RESTAURANT • INSTITUTIONAL • HISTORIC RESTORATION • LEED
 233 BROADWAY, SUITE 2440 NEW YORK, NEW YORK 10279-2502
 T 212 462 4200 F 212 462 4288 www.tobinparnes.com

PROJECT:
 DRAWING TITLE:

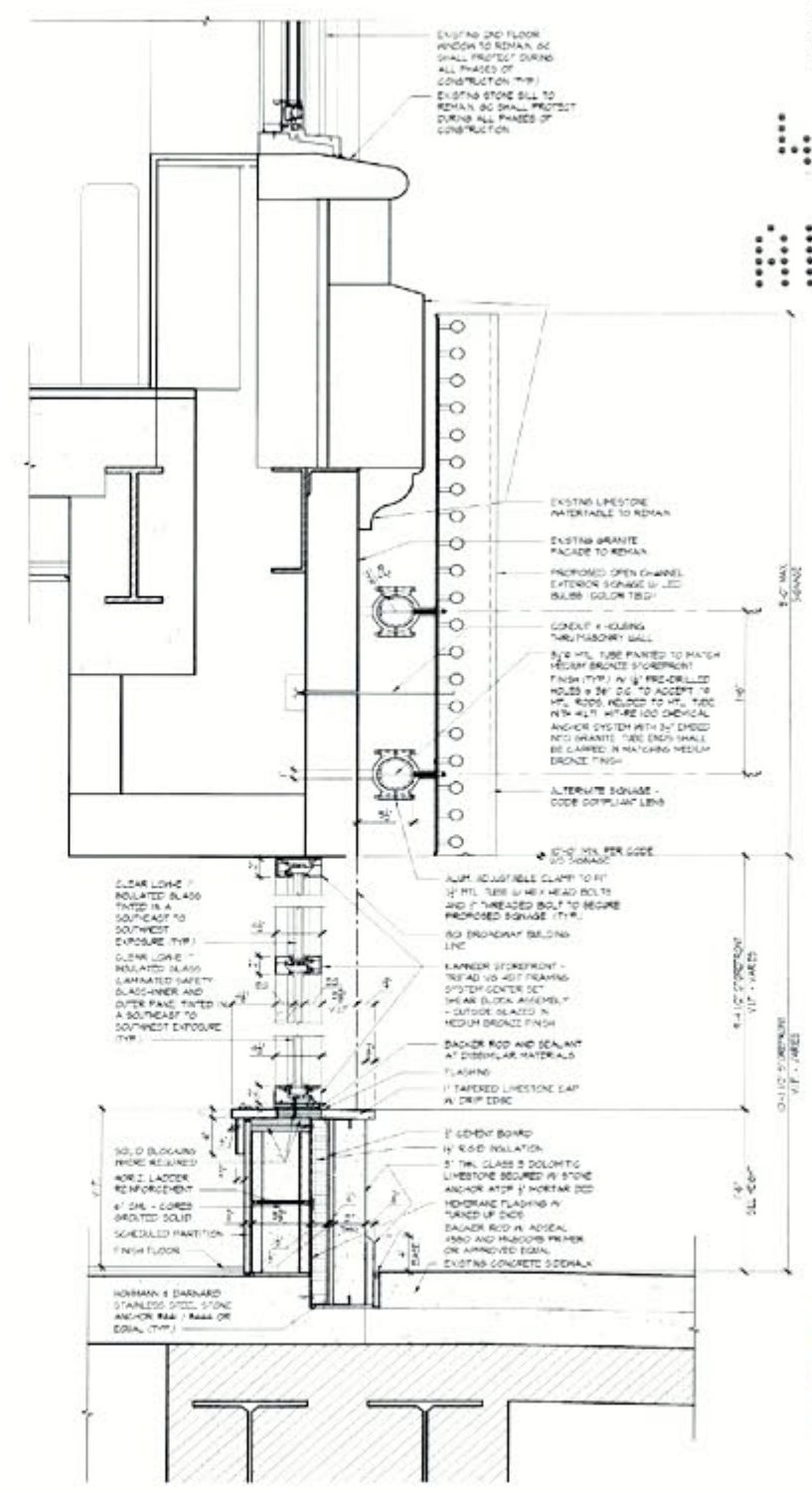
New 43rd Street Marquee and Storefront
Proposed Section Details @ Storefront

#	Submittals	Date	PROJECT NO. : 19173	DWG NO. :
1	Issued for CBS Review	2/04/20		A-29
2	Issued for LPC Review	2/25/20		
SCALE: AS NOTED			DATE: 2/04/20	

LPC
 4/20/18
 APPROVED



1 Section @ Storefront - Recessed Entry Sill
 A-20 SCALE: 1/2" = 1'-0"



2 Section @ Storefront - Full Height Glass with Open Channel Illuminated Sign
 A-20 SCALE: 1/2" = 1'-0"

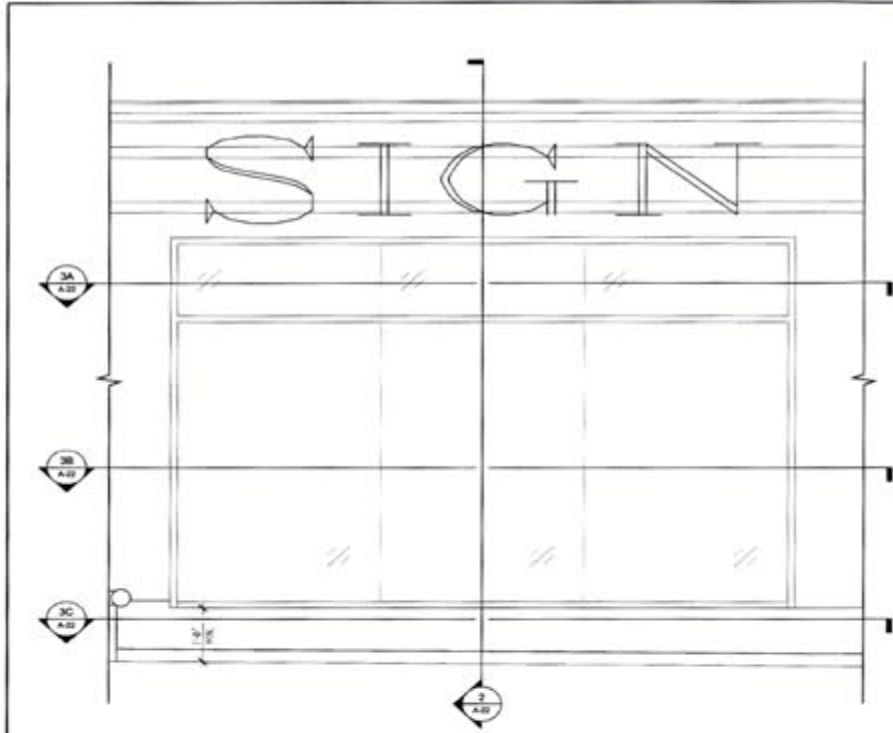


TOBIN | PARNES
 WORKPLACE • HEALTH CARE • RETAIL • HOUSING
 RESTAURANT • INSTITUTIONAL • HISTORIC RESTORATION • LEED
 112 NASSAU ST. NEW YORK, NY 10038
 TEL: 212.400.1232 FAX: 212.400.1234

PROJECT:
1501 Bway - Storefront & Signage Master Plan
 DRAWING TITLE:
Section Details @ Storefront

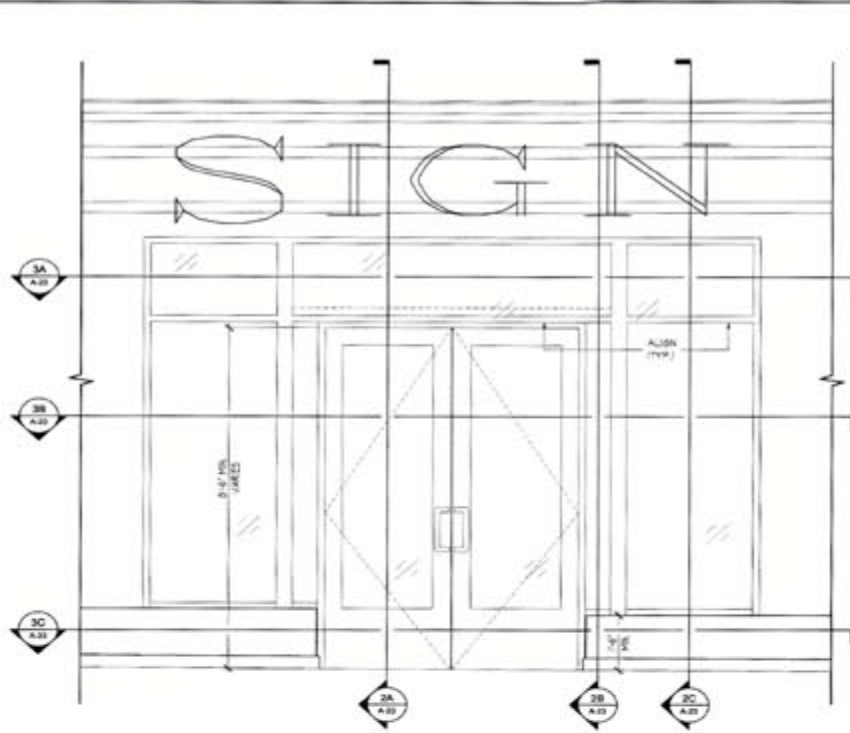
1501 Bway - Storefront & Signage Master Plan
 Section Details @ Storefront

#	Submittals	Date	PROJECT NO. :17126	DWG NO. :
1	Issued for CBS Review	10/03/17		
2	Issued for CBS Review	10/31/17		
3	Issued for LPC Review	11/22/17		
4	Issued for Coordination	1/19/18	SCALE: 1-1/2" = 1'-0"	A-20
5	Issued for LPC Filing	4/23/18	DATE: 10/03/17	



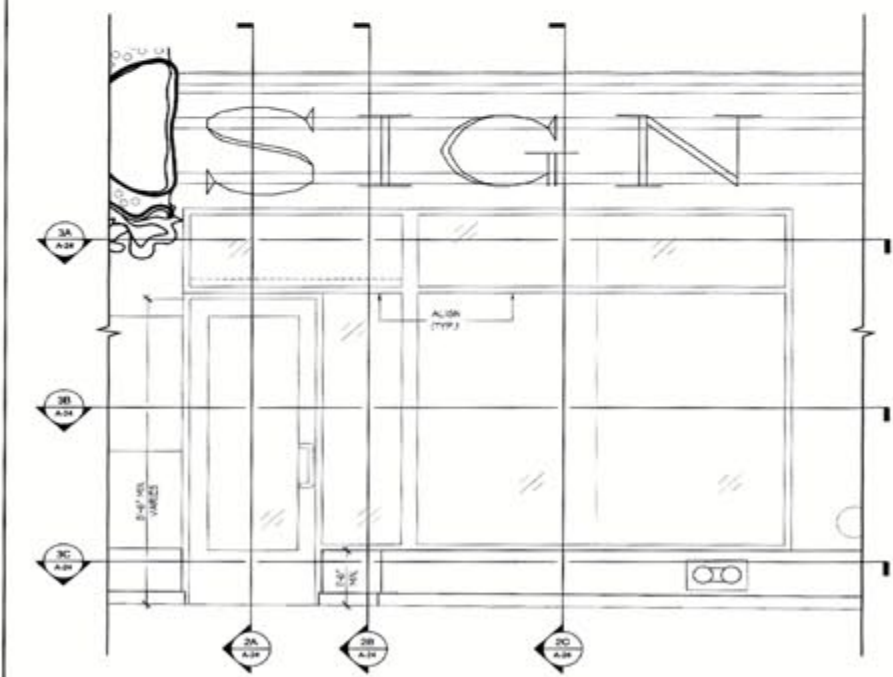
PROTOTYPE A

1 Elevation & Storefront Prototype A
SCALE 1/2" = 1'-0"



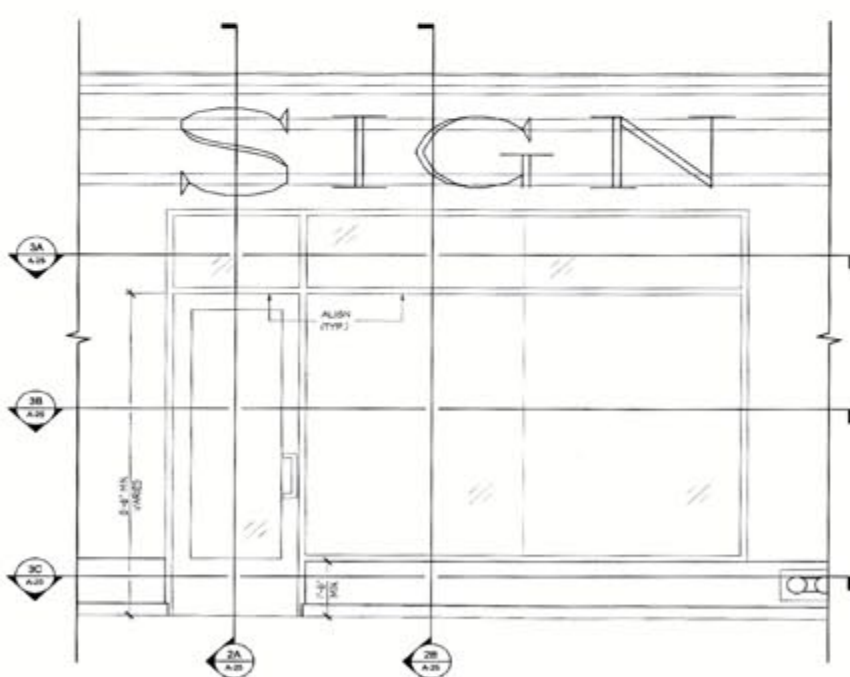
LPC
4/20/18
4/23/18
PROTOTYPE B

2 Elevation & Storefront Prototype B
SCALE 1/2" = 1'-0"



PROTOTYPE C
PROTOTYPE D
DOOR ON OPPOSITE SIDE

3 Elevation & Storefront Prototype C & D
SCALE 1/2" = 1'-0"

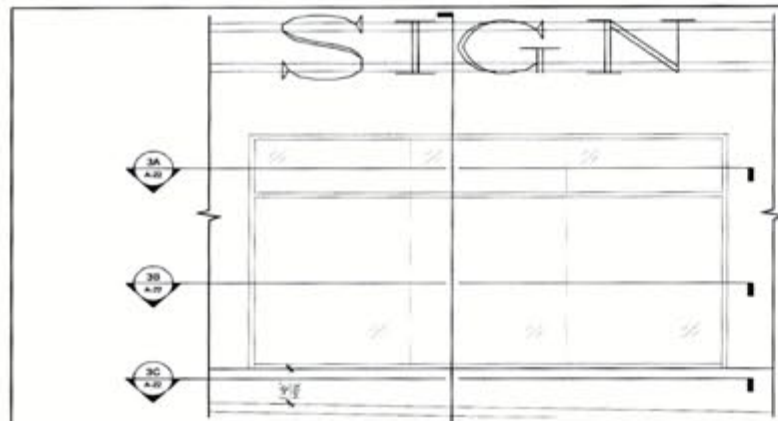


PROTOTYPE E
PROTOTYPE F
DOOR ON OPPOSITE SIDE

4 Elevation & Storefront Prototype E & F
SCALE 1/2" = 1'-0"

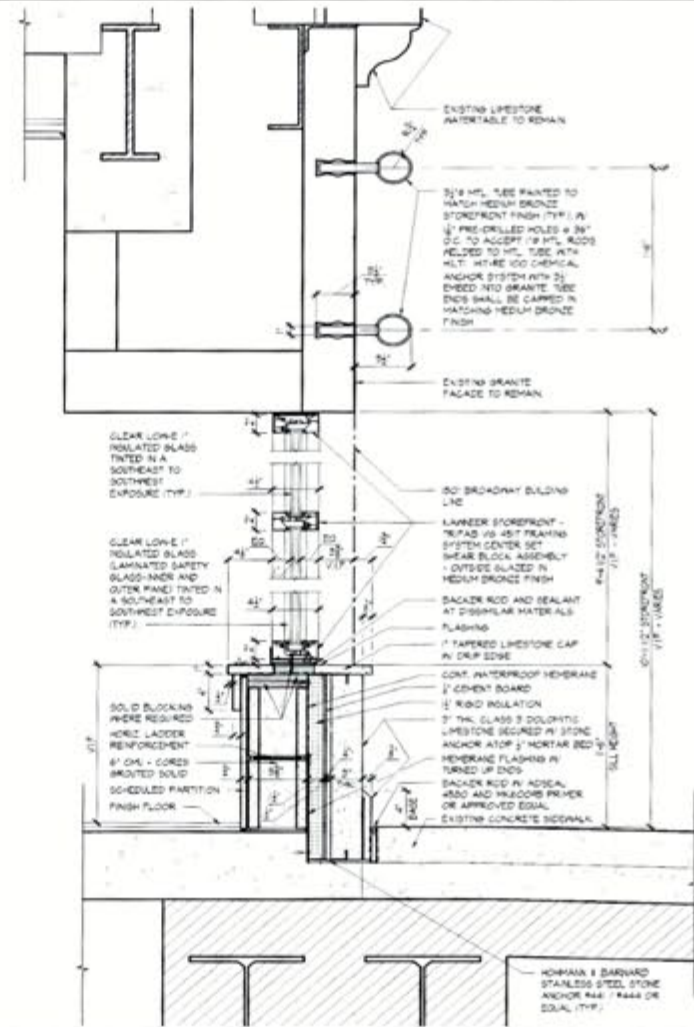


TOBIN PARNES <small>WORKPLACE • HEALTHCARE • RETAIL • HOSPITALITY RESTAURANT • INSTITUTIONAL • HISTORIC RESTORATION • LODG. 204 HUDSON STREET, SUITE 300 NEW YORK, NEW YORK 10013-0135 T 212 460 4660 F 212 460 4788 www.tobinparnes.com</small>	PROJECT: 1501 Bway - Storefront & Signage Master Plan	# Submittals Date 1 Issued for LPC Filing 4/20/18 2 Issued for LPC Filing 4/23/18	PROJECT NO.: 17126	DWG NO.: A-21
	DRAWING TITLE: Typical Storefront Prototype Elevations		SCALE: AS NOTED DATE: 4/20/18	



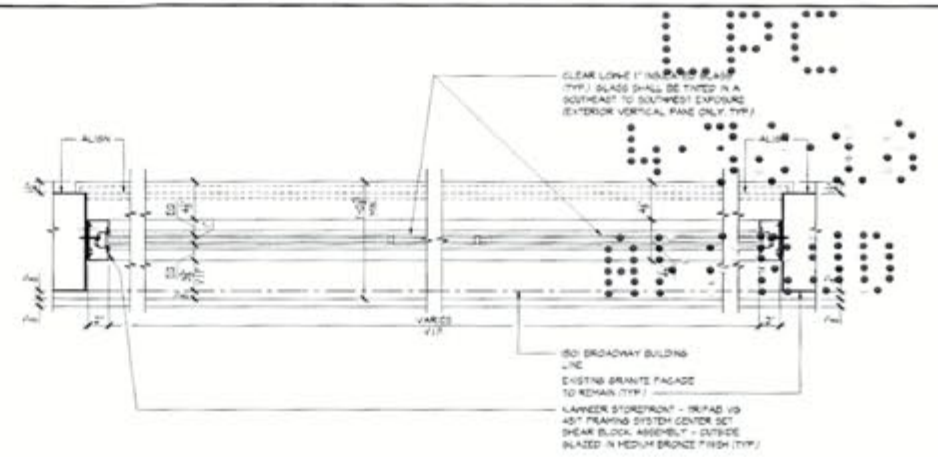
PROTOTYPE A

1 Storefront Prototype A Elevation
A-22 SCALE 3/8" = 1'-0"

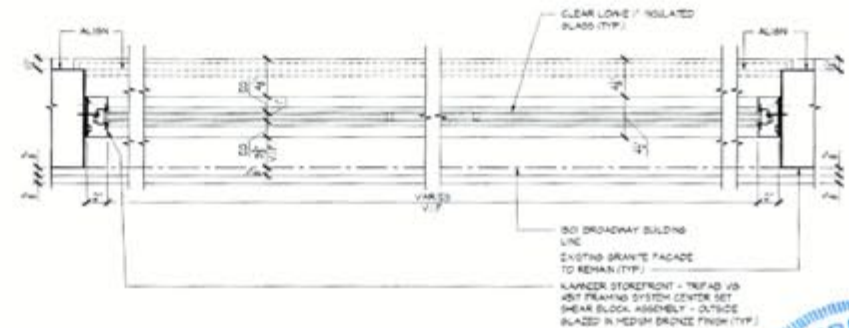


SECTION # STOREFRONT

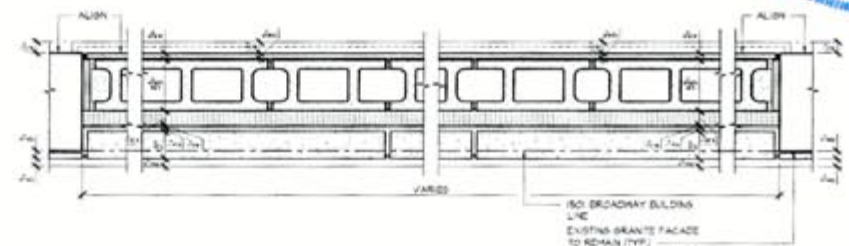
2 Storefront Prototype A Section Detail
A-22 SCALE 1/2" = 1'-0"



3A SECTION # TRANSOM



3B SECTION # BUTT-JOINT LITE



3C SECTION # SILL

B Storefront Prototype A Plan Details
A-22 SCALE 1/2" = 1'-0"



TOBIN | PARNES
 WORKPLACE • HEALTHCARE • RETAIL • HOSPITALITY
 RESTAURANT • INSTITUTIONAL • HISTORIC RESTORATION • LEED
 304 HUDSON STREET, SUITE 500 NEW YORK, NEW YORK 10014
 T 212 462 4600 F 212 462 4606 WWW.TOBIN-PARNES.COM

PROJECT:

1501 Bway - Storefront & Signage Master Plan

DRAWING TITLE:

Storefront Prototype A

#	Submittals	Date
1	Issued for LPC Filing	4/20/18
2	Issued for LPC Filing	4/23/18

PROJECT NO. : 17126
 SCALE: AS NOTED
 DATE: 04/13/18

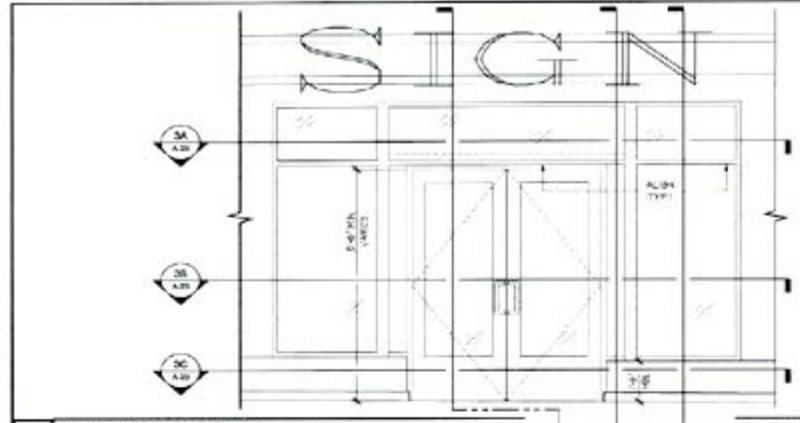
DWG NO. :
A-22

PROTOTYPE B

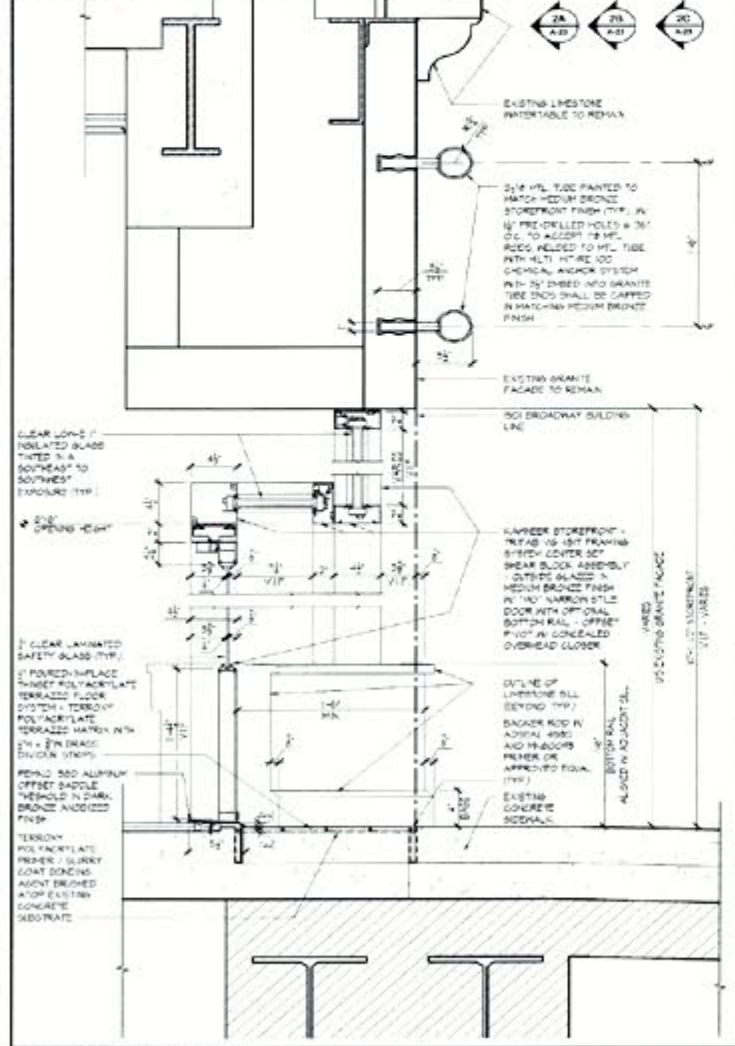
DOOR & HARDWARE SCHEDULE

HARDWARE SET

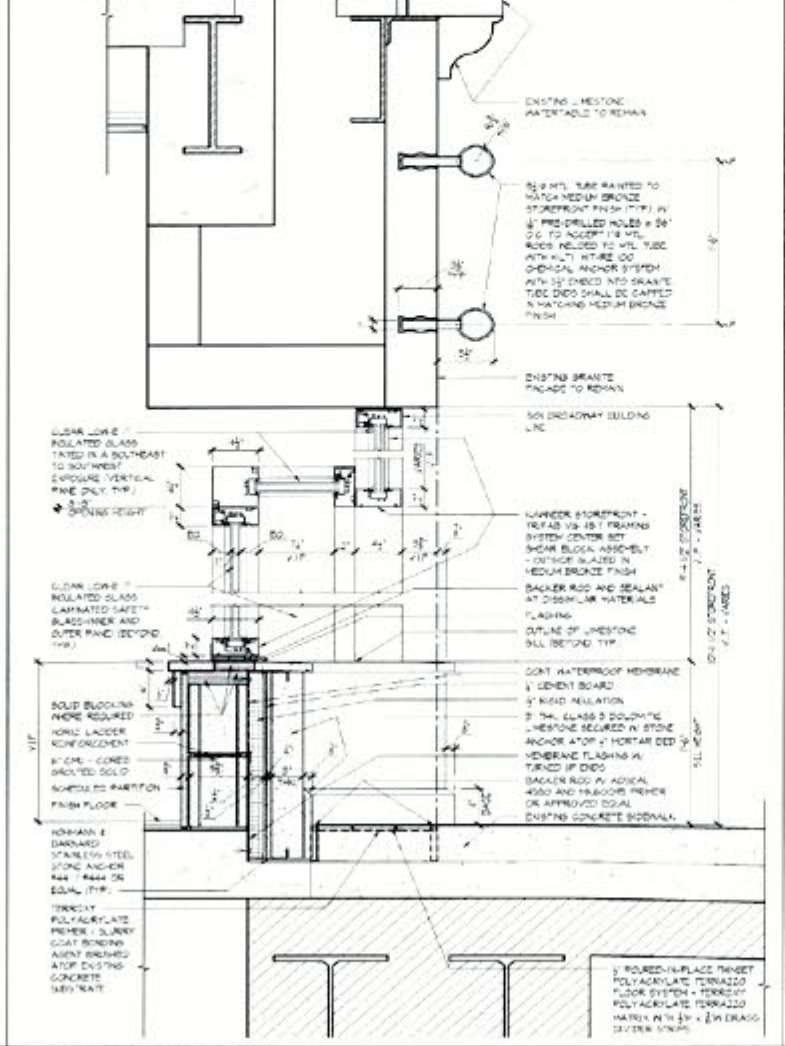
	FINISH	QTY
- KAANER OFFSET TOP & INTER HINGES	MEDIUM BRONZE	2 EA
- KAANER CALIBRE CONCEALED OVERHEAD CLOSER	ALUMINUM	2 EA
- 40 DCS NO HOLD OPEN		
- ADAMS RITE MS-1550 LOCK W/ KEYS CYLINDER	ALUMINUM	1 EA
- KAANER FLUSH BOLT (NAC) VS LEAF	ALUMINUM	1 EA
- GORCPH-1 PUSH/PULL HANDLES	OIL RUBBED BRONZE	2 EA
- PEMCO 1550 4" X 12" WIDE THRESHOLD	DARK BRONZE	1 EA



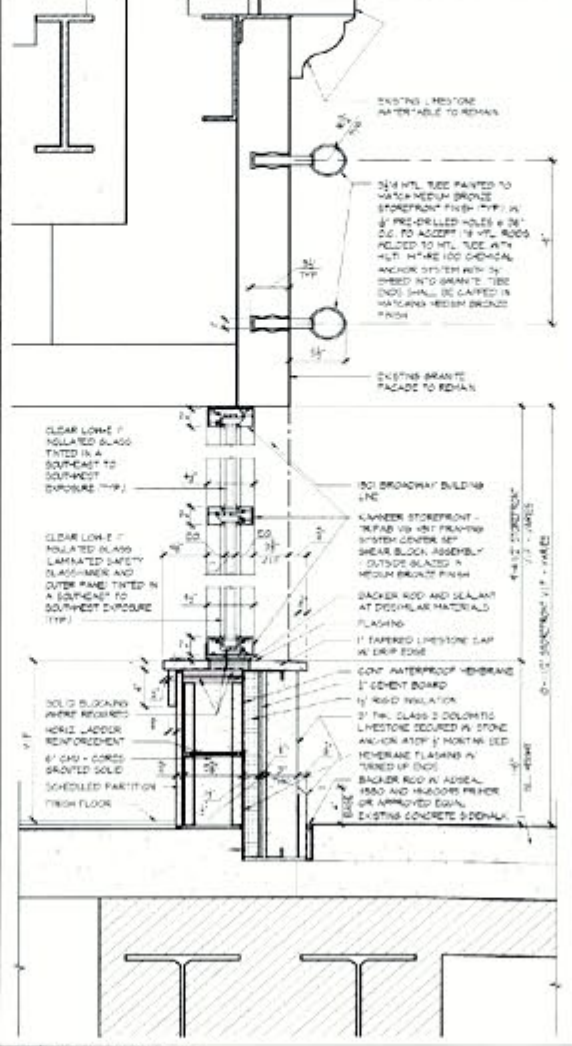
1 Storefront Prototype B Elevation
A-23 SCALE: 3/8" = 1'-0"



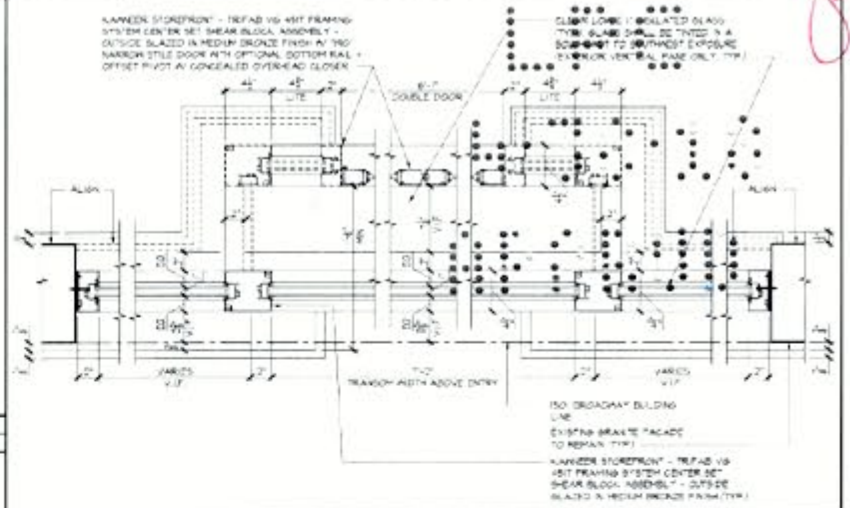
2A SECTION @ RECESSED DOOR
2 Storefront Prototype B Section Details
A-23 SCALE: 1/2" = 1'-0"



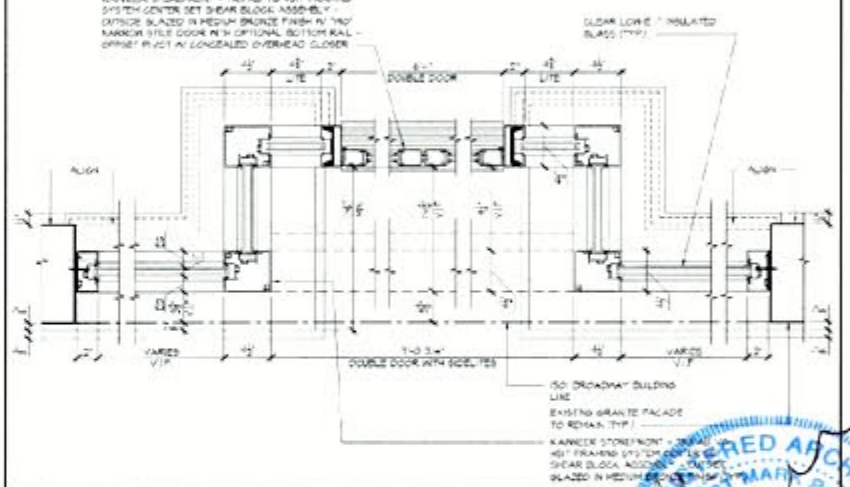
2B SECTION @ RECESSED SILLIGHT



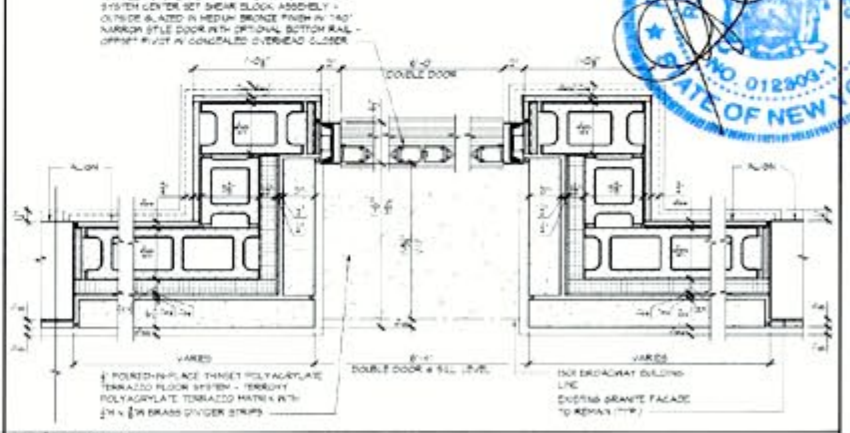
2C SECTION @ STOREFRONT



2A SECTION @ TRANSOM



2B SECTION @ DOOR / SILLITE



2C SECTION @ SILL



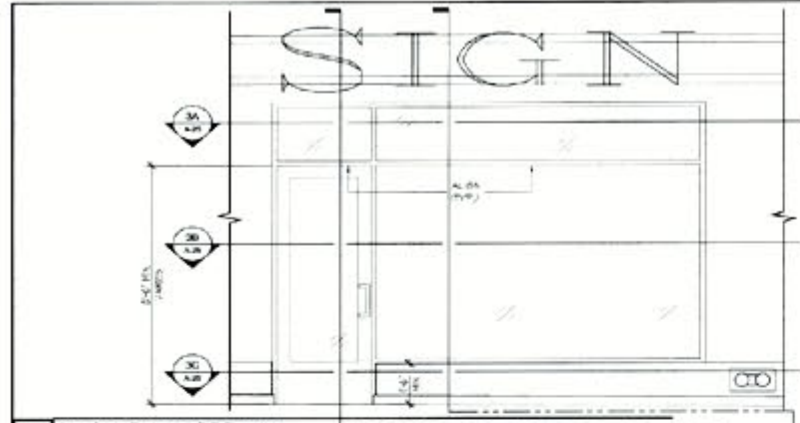
TOBIN PARNES
 INTERIORS • REAL ESTATE • RETAIL • HOSPITALITY
 RESTAURANTS • PROFESSIONAL • HISTORIC PRESERVATION • LEED
 334 ALBANY STREET, SUITE 500 NEW YORK, NY 10014 212 401 4000 & 212 401 8188

PROJECT: 1501 Bway - Storefront & Signage Master Plan
 DRAWING TITLE: Storefront Prototype B

1501 Bway - Storefront & Signage Master Plan
 Storefront Prototype B

Submittals
 1 issued for LPC Filing
 2 issued for LPC Filing
 Date: 4/20/18
 4/23/18

PROJECT NO: 17126
 DWG NO: A-23
 SCALE: AS NOTED
 DATE: 4/13/18



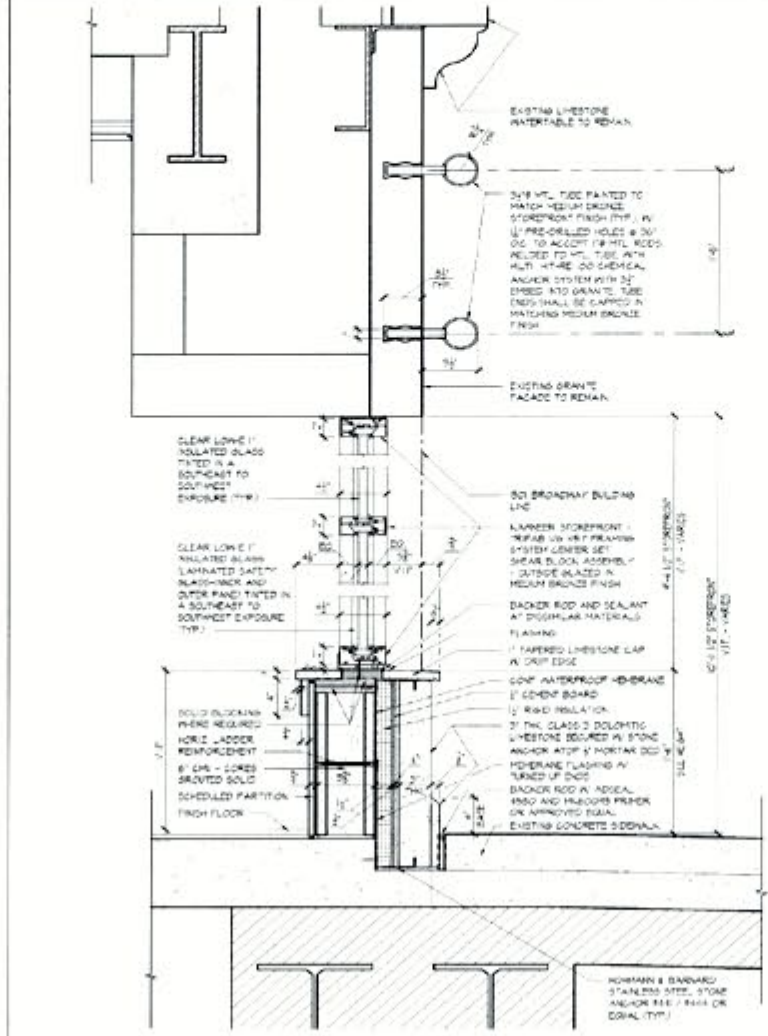
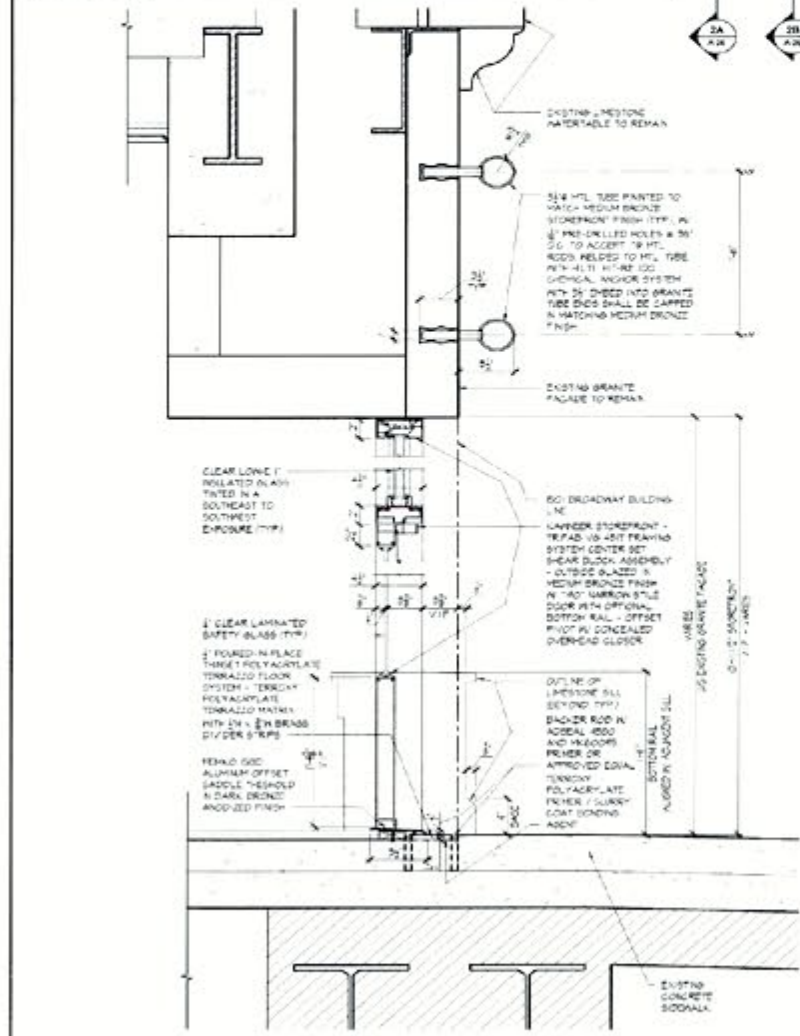
PROTOTYPE E PROTOTYPE F

DOOR ON OPPOSITE SIDE

DOOR & HARDWARE SCHEDULE

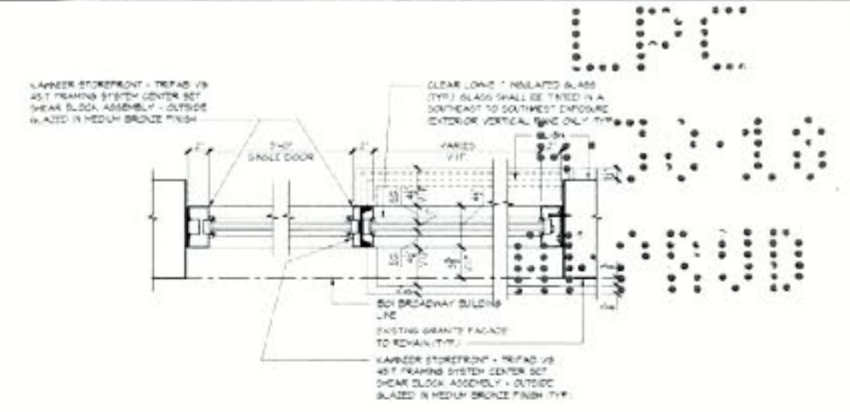
HARDWARE SET #2	FINISH	QTY.
- KAWNEER OFFSET TOP & BOTTOM HANGES	MEDIUM BRONZE	2 EA
- KAWNEER CALIBER CONCEALED OVERHEAD CLOSER TO DOOR, NO HOLD OPEN	ALUMINUM	2 EA
- ADAMS RITE MS-1880 LOCK W/ KEYED CYLINDER	ALUMINUM	1 EA
- COM/CP - PUSH/PULL HANDLES	0" RUBBED BRONZE	2 EA
- PFDNO 500 - 30" WIDE THRESHOLD	DARK BRONZE	1 EA

1 Storefront Prototype E/F Elevation
A-25 SCALE: 3/8" = 1'-0"

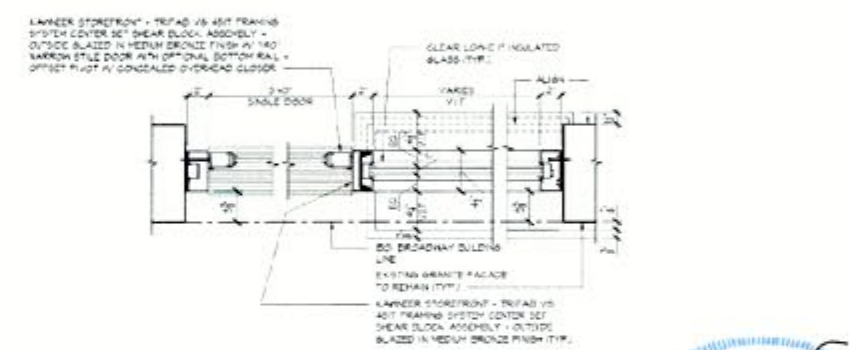


2A SECTION # DOOR
2 Storefront Prototype E/F Section Details
A-25 SCALE: 1/2" = 1'-0"

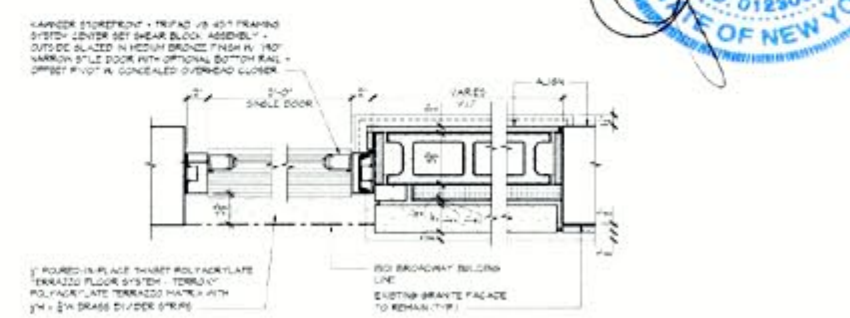
2B SECTION # SIDELITE



3A SECTION # TRANSOM



3B SECTION # DOOR / SIDELITE



3C SECTION # SILL

3 Storefront Prototype E/F Prior Details
A-25 SCALE: 1/2" = 1'-0"



TOBIN | PARNES
ARCHITECTS • INTERIORS • PLANNING • DESIGN • RESTAURANT • INSTITUTIONAL • HISTORIC RESTORATION • LEED
304 HUDSON STREET SUITE 1000 MANHATTAN, NEW YORK 10014
212 460 0700 FAX 212 460 0700 WWW.TOBIN-PARNES.COM

PROJECT: **1501 Bway - Storefront & Signage Master Plan**
DRAWING TITLE: **Storefront Prototype E F**

#	Submittal	Date	PROJECT NO. 17126	DWG NO.:
1	Issued for LPC Filing	4/20/18		A-25
2	Issued for LPC Filing	4/23/18		
SCALE: AS NOTED			DATE: 4/13/18	

Thank You !

The current proposal is:

LPC-20-06239

1501 Broadway

Borough of Manhattan

How to Testify:

Via Zoom:

<https://us02web.zoom.us/j/86733570500?pwd=NzJMWHZ4YW16RUo0MIR5TjdVMkU3QT09>

Meeting ID: 823 3521 4741

Password: 890057

By Phone: 1 646-558-8656

US (New York) 877-853-5257 (Toll free)

US 888 475 4499 (Toll free)