

The New York Public Library Stephen A. Schwarzman Building



THE NEW YORK PUBLIC LIBRARY
MIDTOWN CAMPUS RENOVATION
STEPHEN A. SCHWARZMAN BUILDING

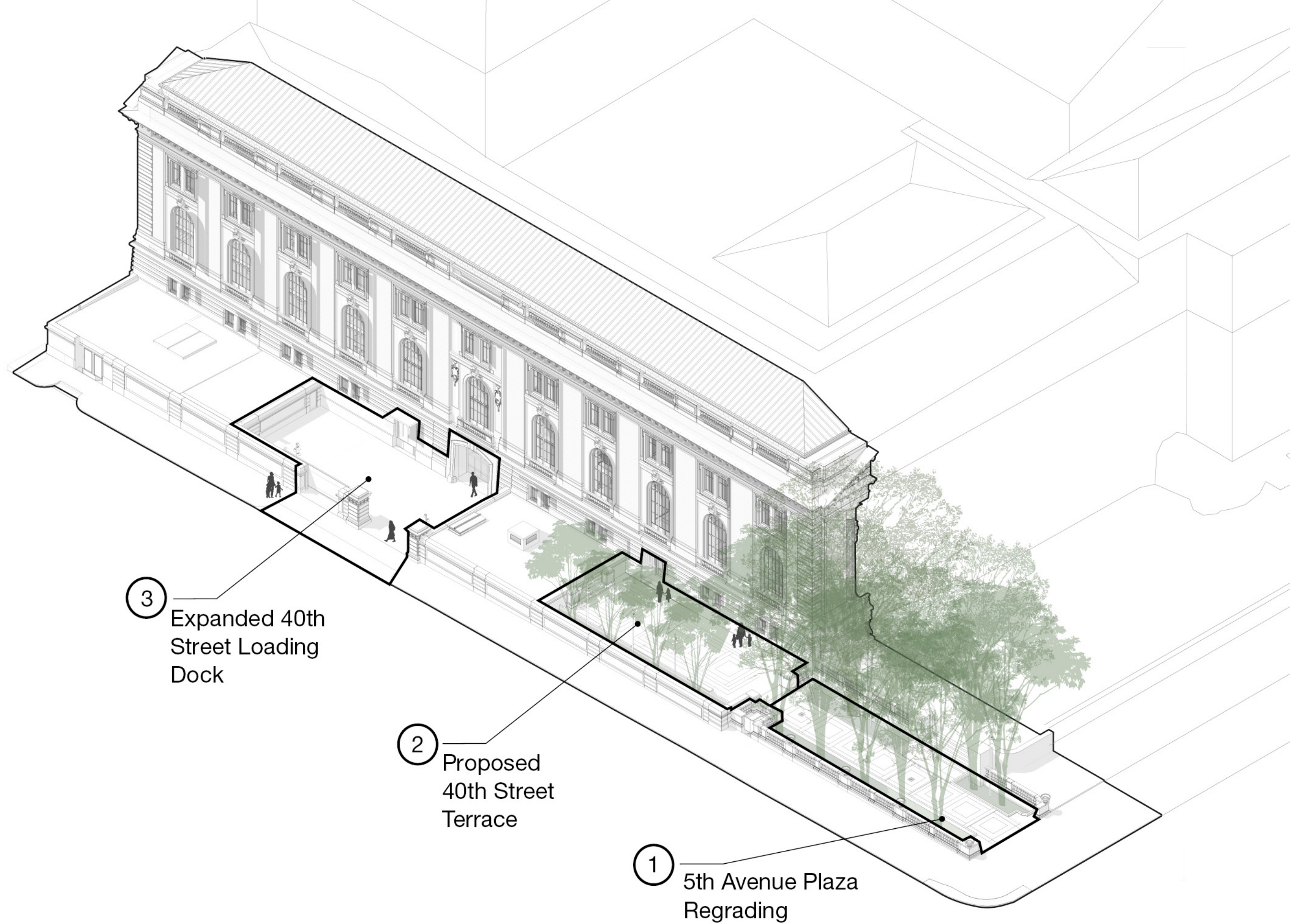
New York City Landmarks Commission
FOLLOW-UP SUBMISSION | March 5, 2019

Commissioner Comments from 2/19:

- Reconsider planter & paving design at proposed 40th Street Terrace
- Review lighting design at loading dock, specifically the number of poles

Additional Updated Information:

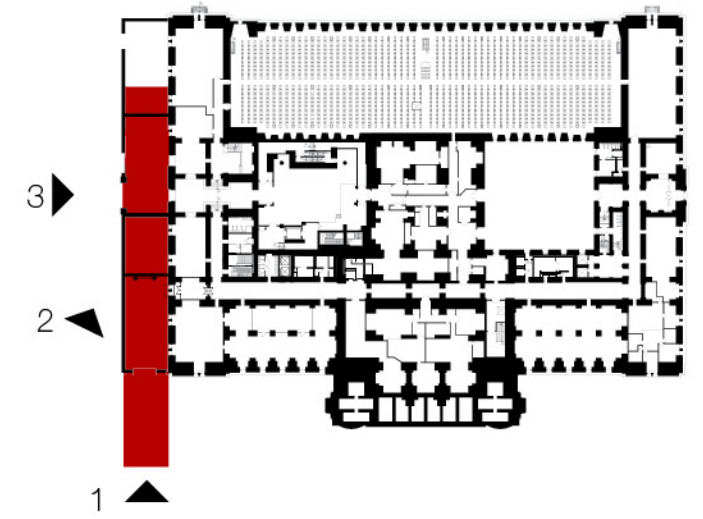
- Revised location of Fifth Avenue Plaza proposed light poles



3 Expanded 40th Street Loading Dock

2 Proposed 40th Street Terrace

1 5th Avenue Plaza Regrading



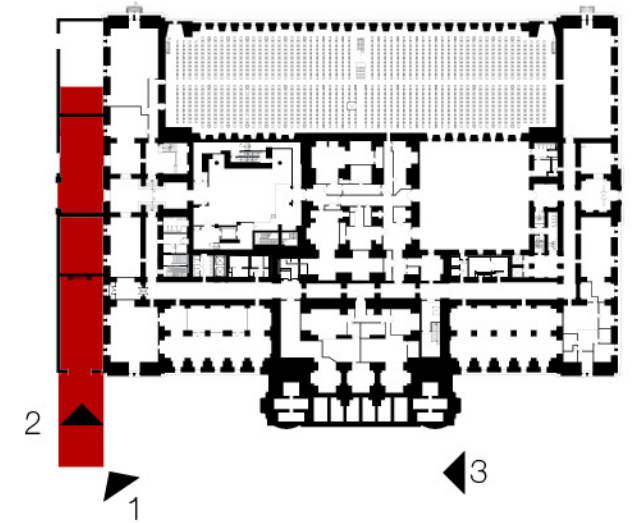
▲ 1 Fifth Avenue Plaza



▲ 2 Street wall at 40th Street



▲ 3 Loading dock & entry



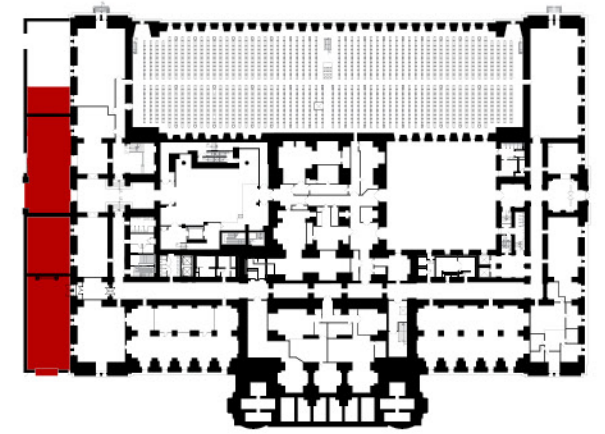
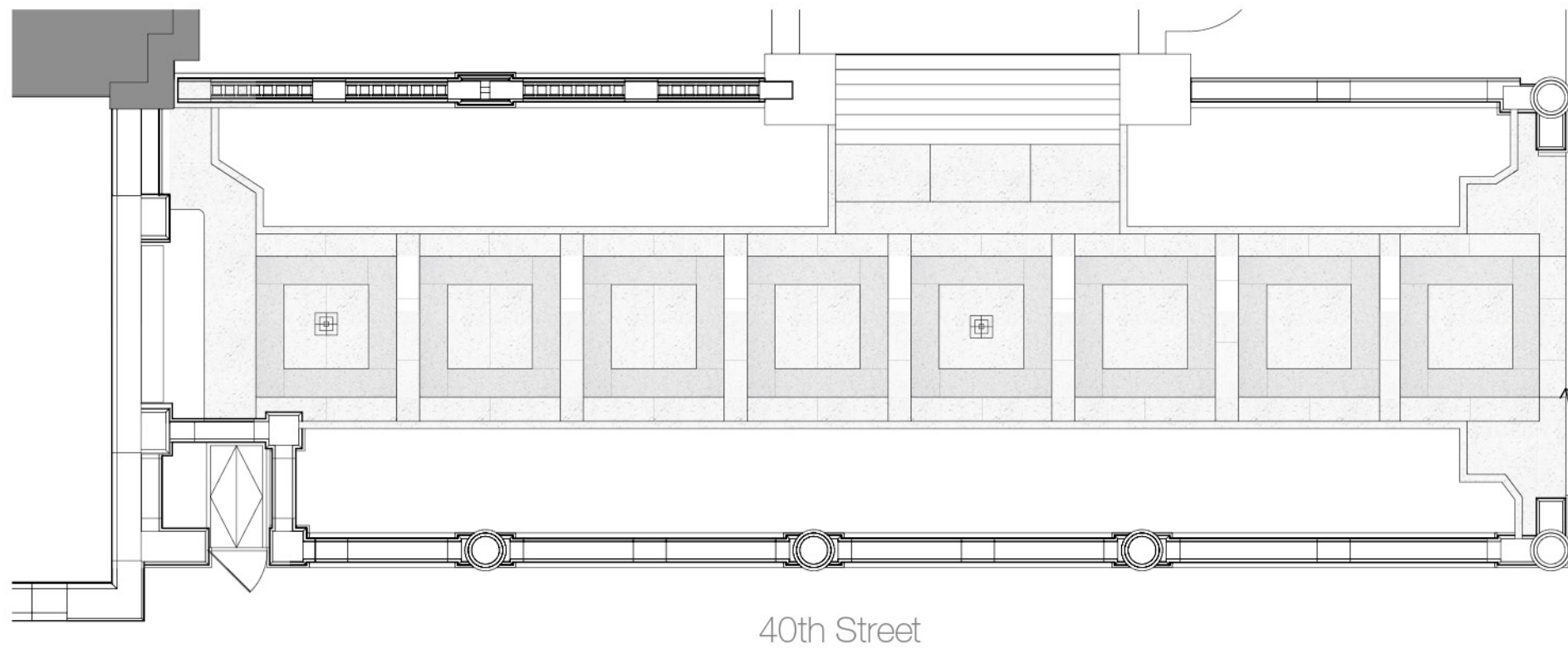
▲ 1 Existing step at Fifth Avenue Plaza



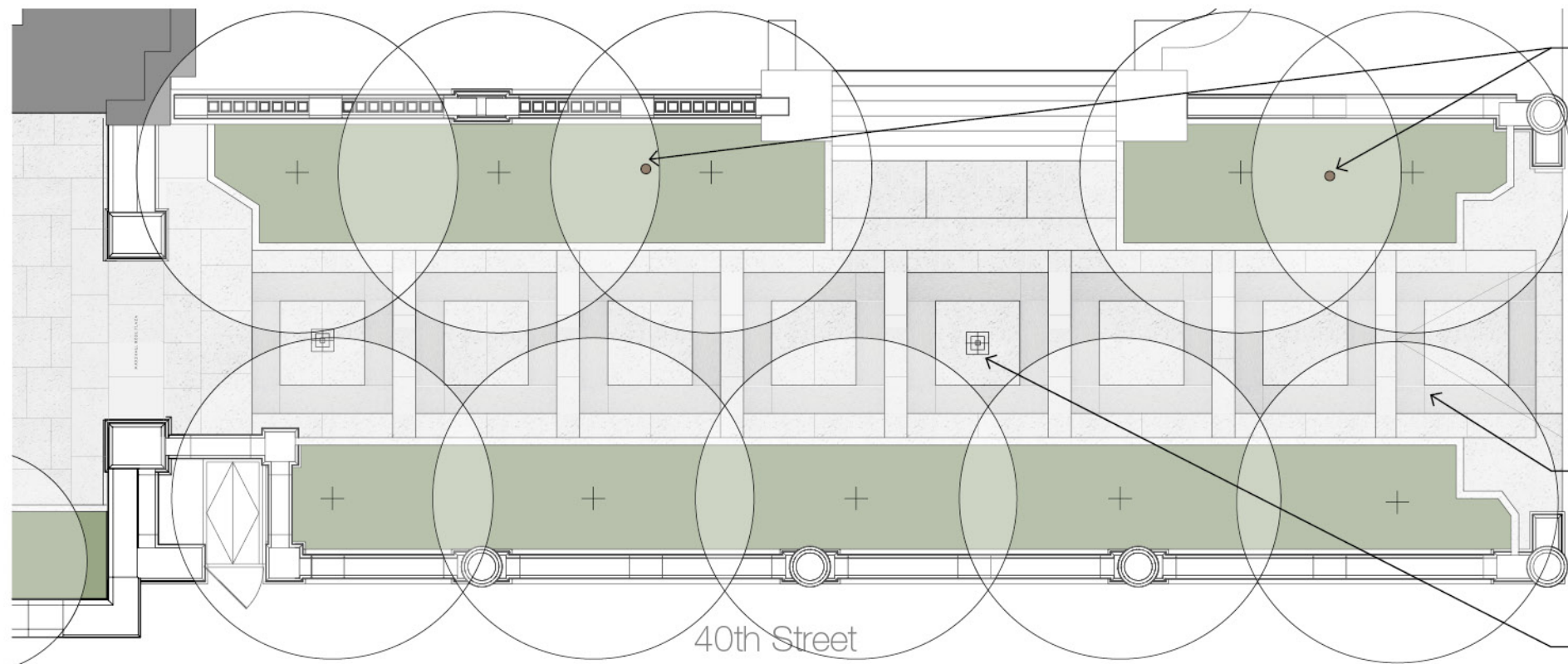
▲ 2 Existing non-accessible grille covers



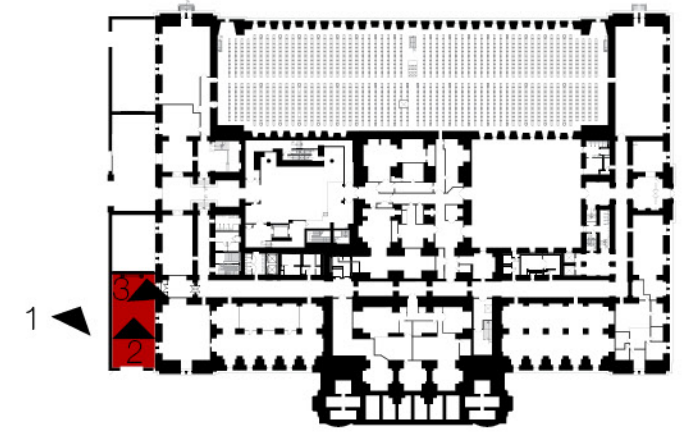
▲ 3 Existing & historic lighting at Fifth Avenue Plaza



Existing Fifth Avenue Plaza



Proposed Fifth Avenue Plaza



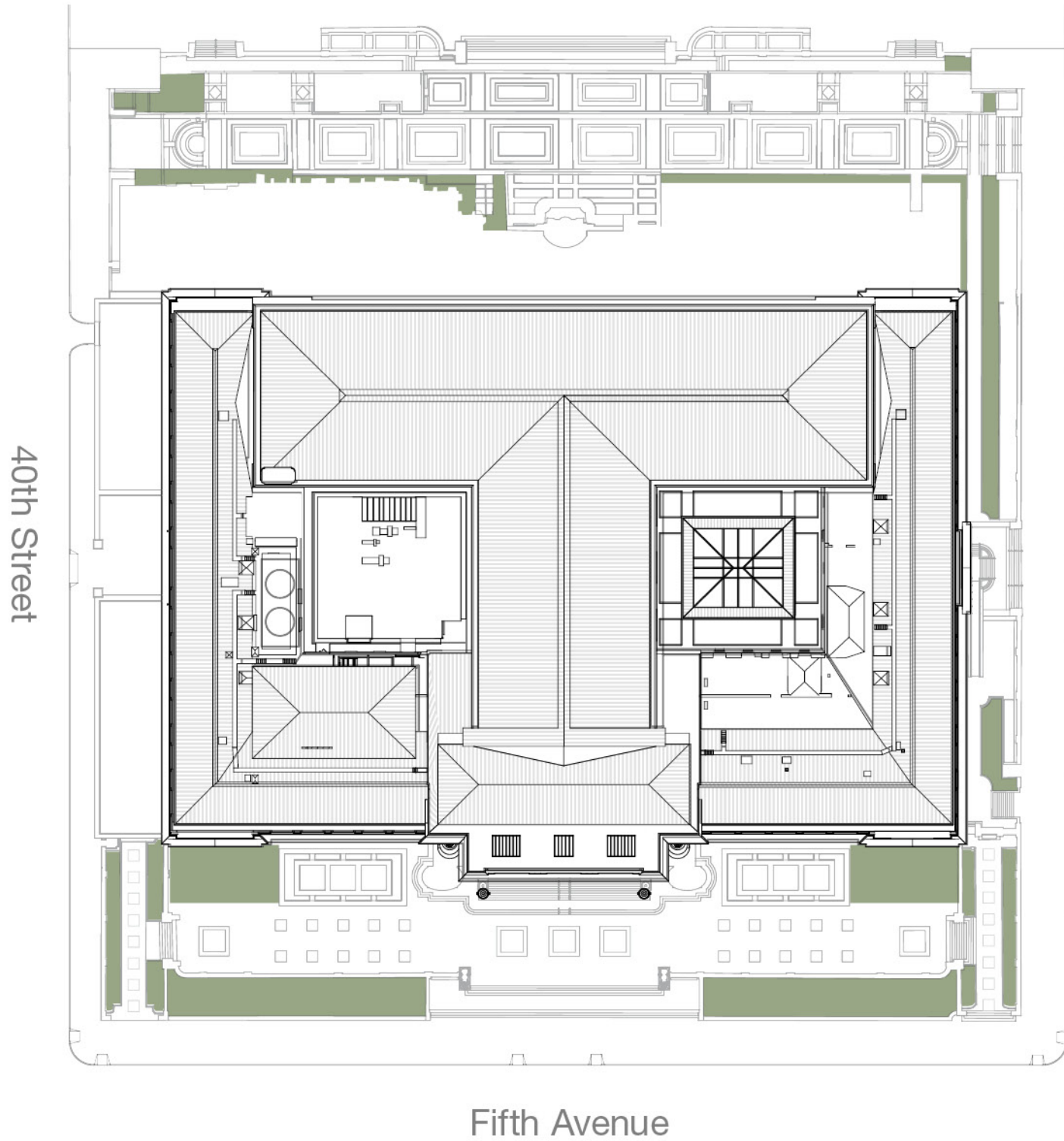
▲ 1 Existing street wall at 40th Street



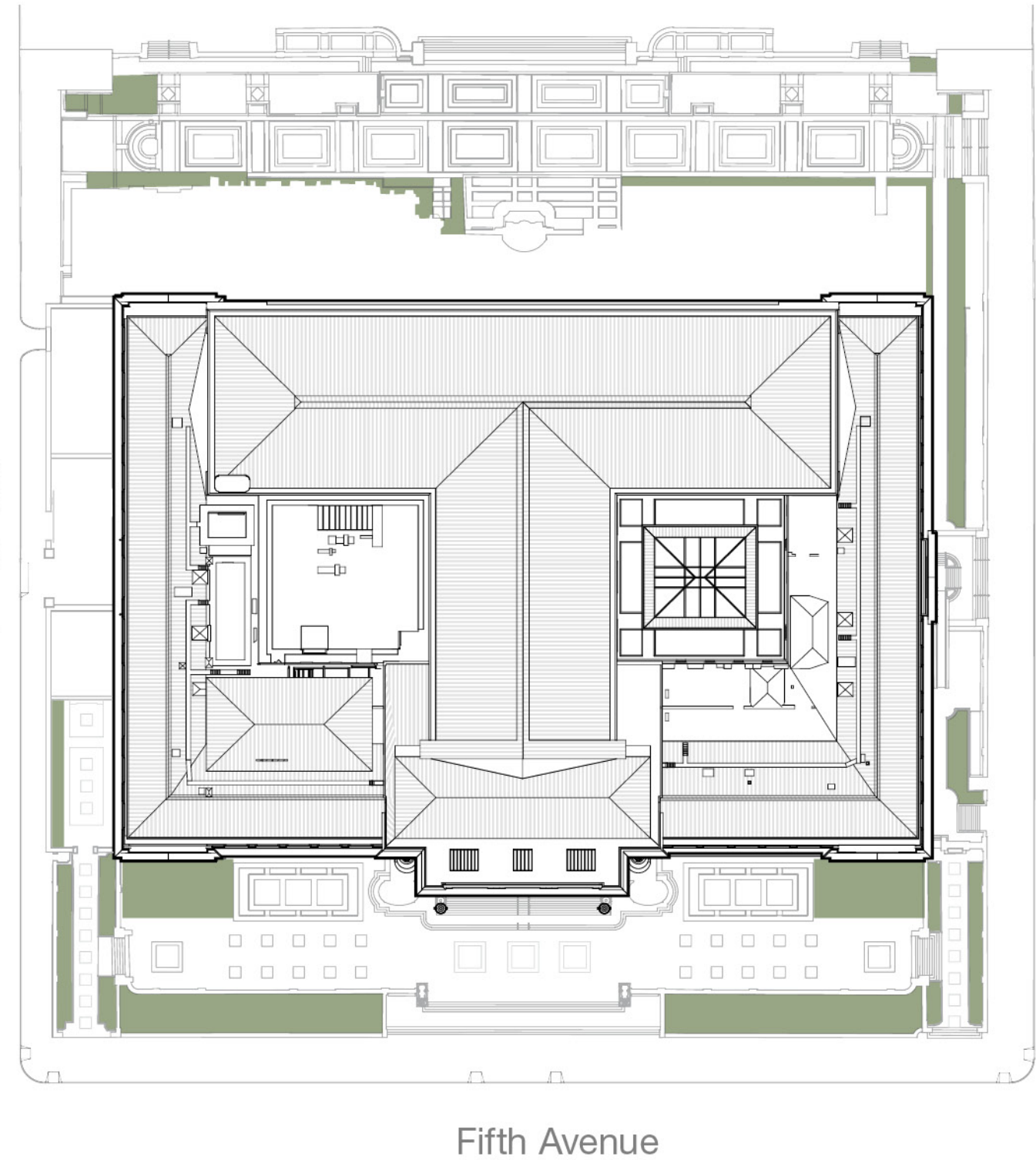
▲ 2 Existing bench & engaged piers



▲ 3 Existing roof over electrical room



Existing Site Plan



Proposed Site Plan



mecanoo

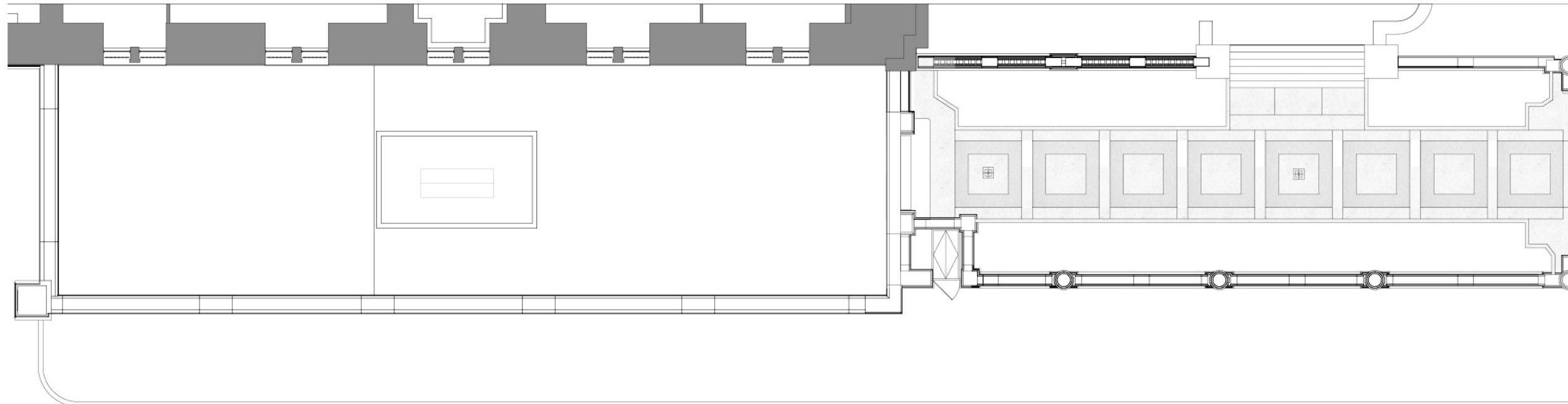
**BEYER
BLINDER
BELLE**



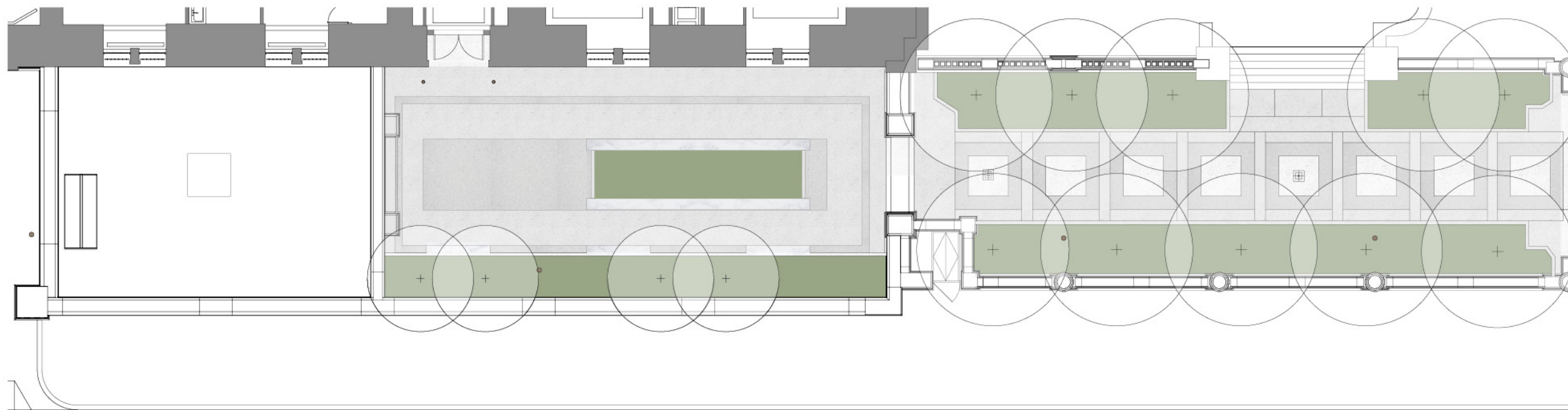
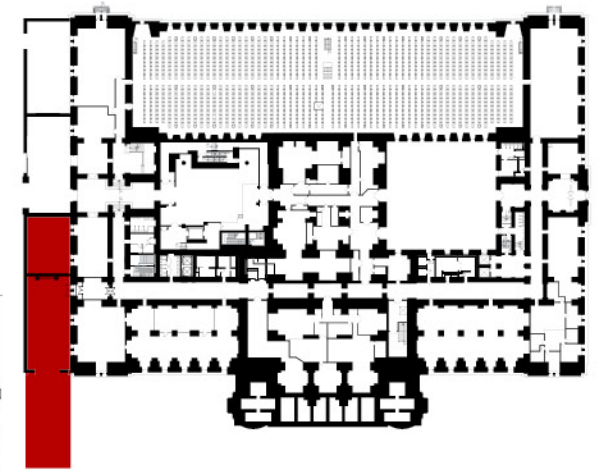
THE NEW YORK PUBLIC LIBRARY
MIDTOWN CAMPUS RENOVATION
STEPHEN A. SCHWARZMAN BUILDING



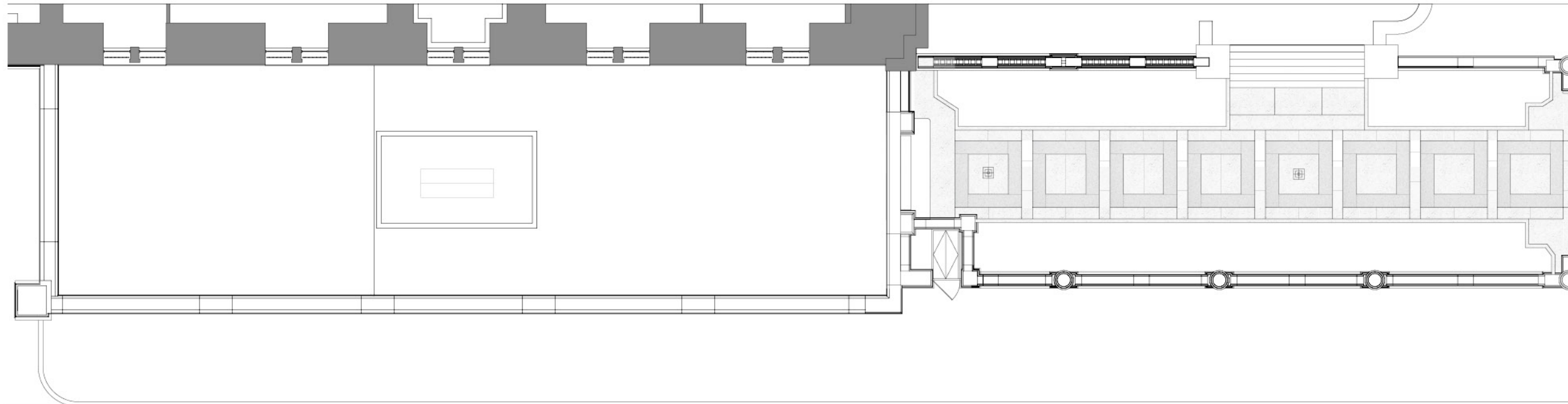
40th Street Terrace



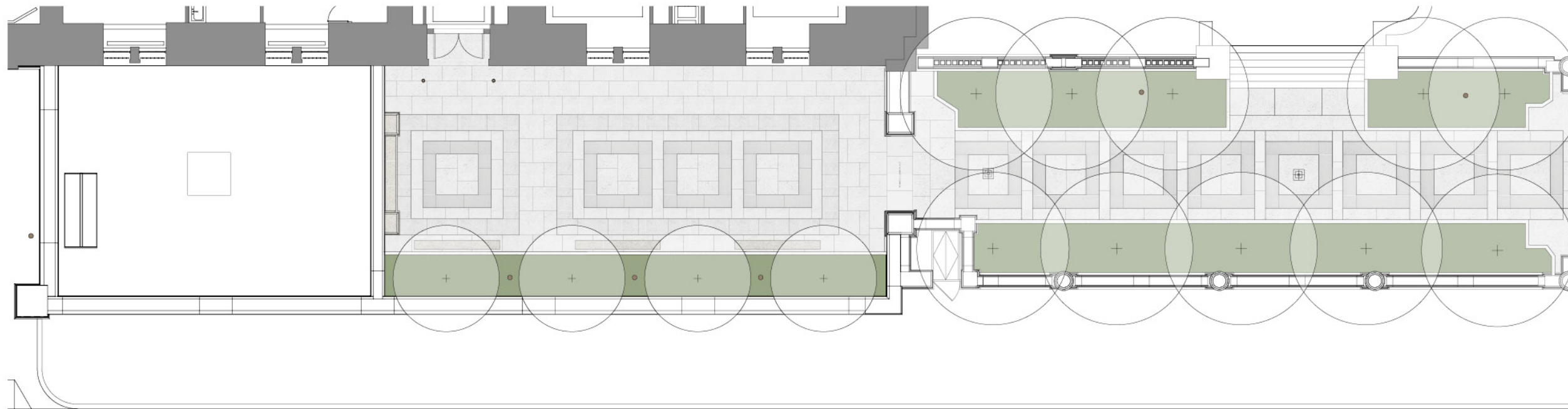
Existing 40th Street Partial Plan



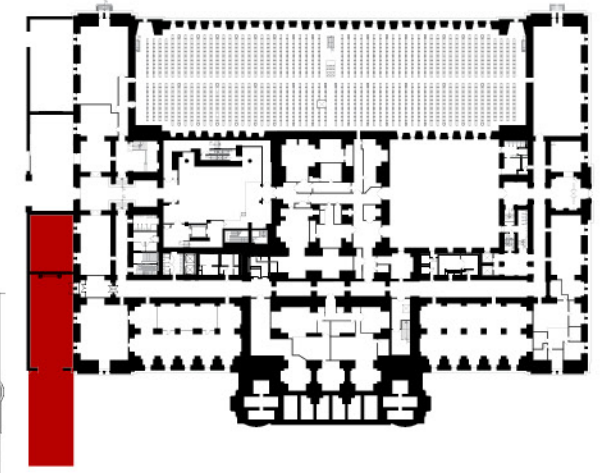
Proposed 40th Street Partial Plan



Existing 40th Street Partial Plan

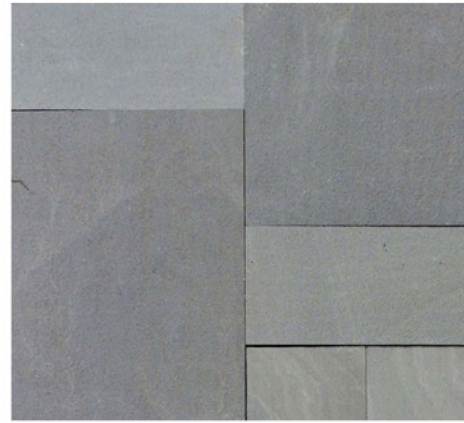


Proposed 40th Street Partial Plan





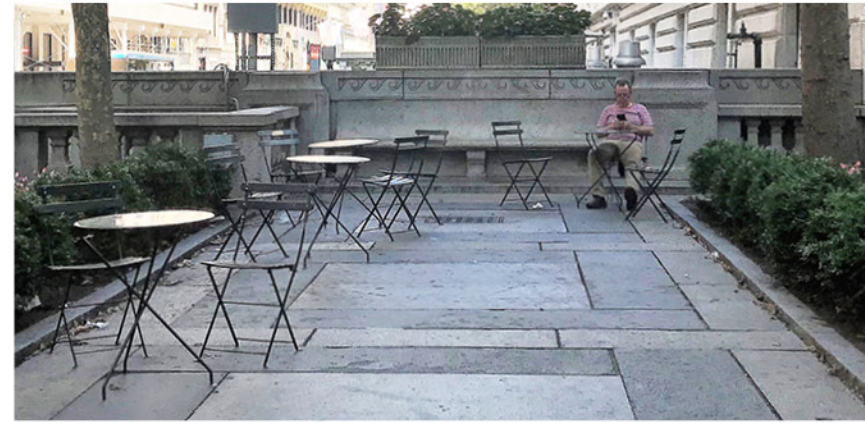
Chelmsford Granite
(paving)



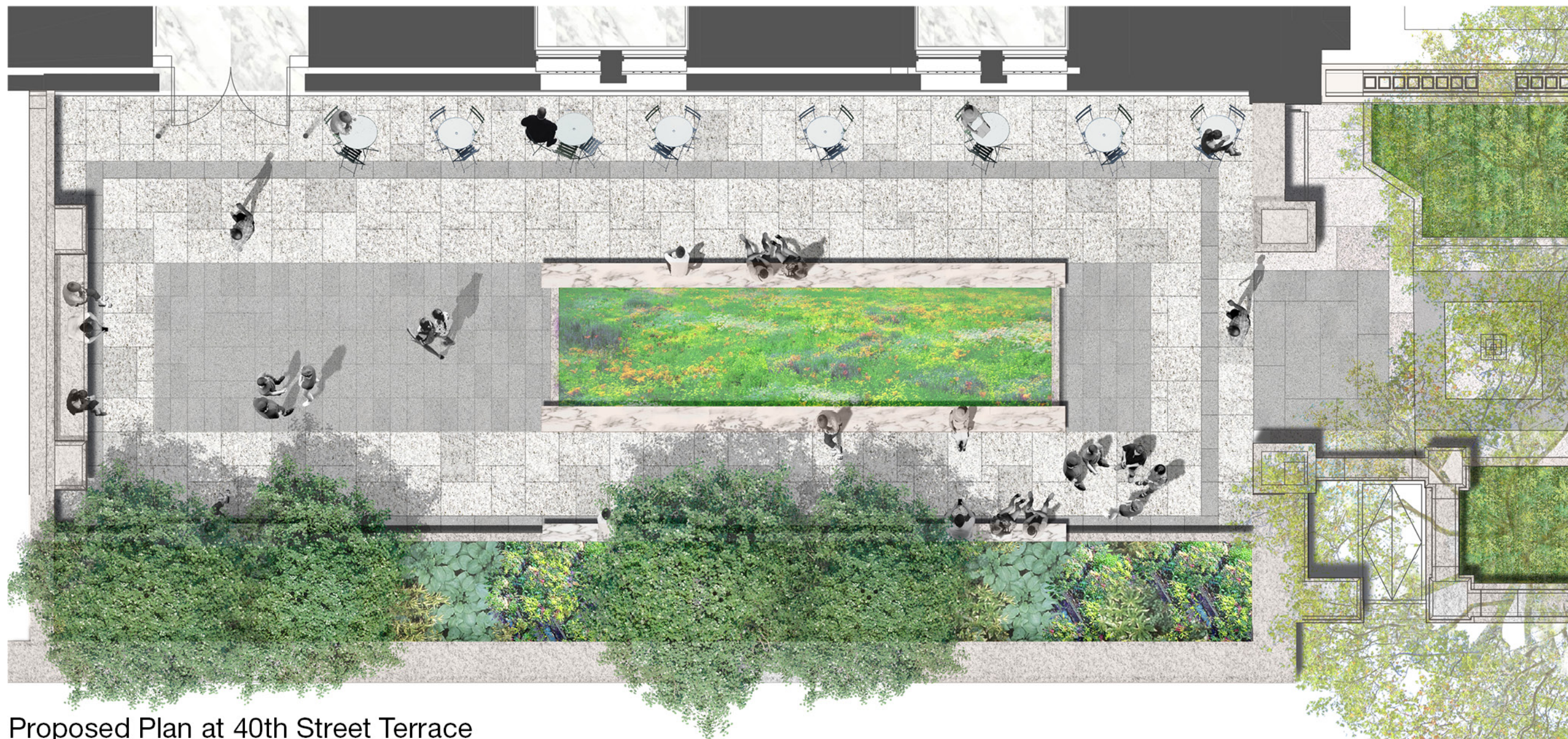
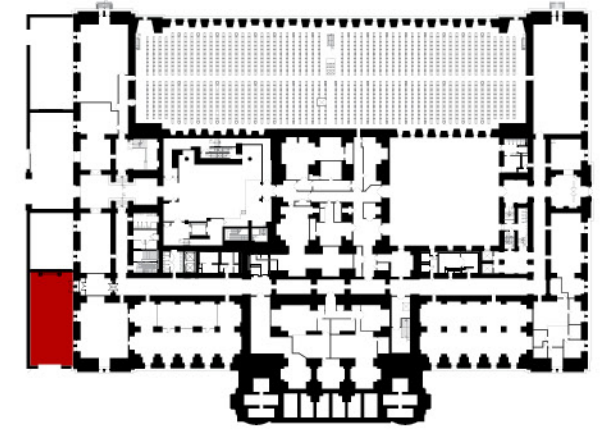
Elk Brook Bluestone
(paving)



Milford Pink Granite
(bench, planters)



Existing Fifth Avenue Plaza materials



Proposed Plan at 40th Street Terrace



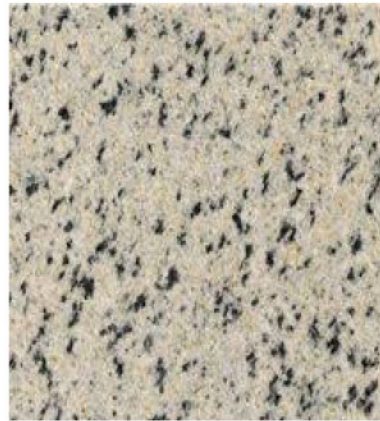
Chelmsford Granite (paving)



Chelmsford Granite - sandblasted (paving)



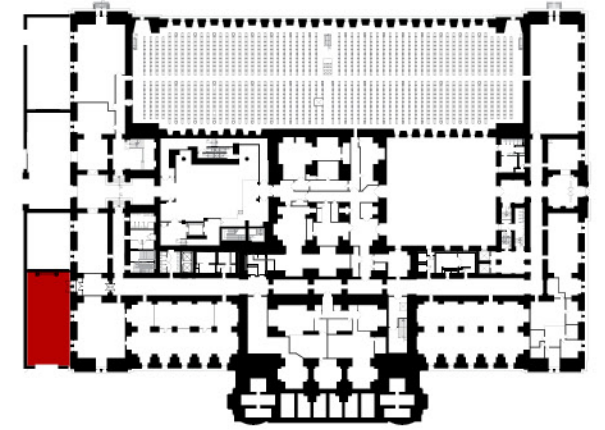
Elk Brook Bluestone (paving)



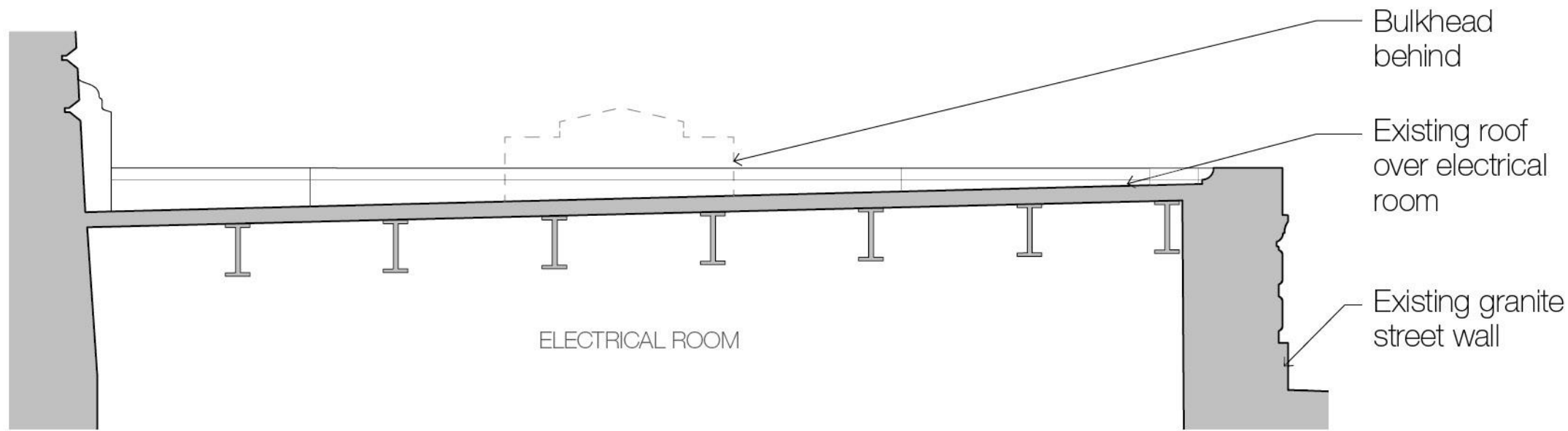
Milford Pink Granite (bench, planters)



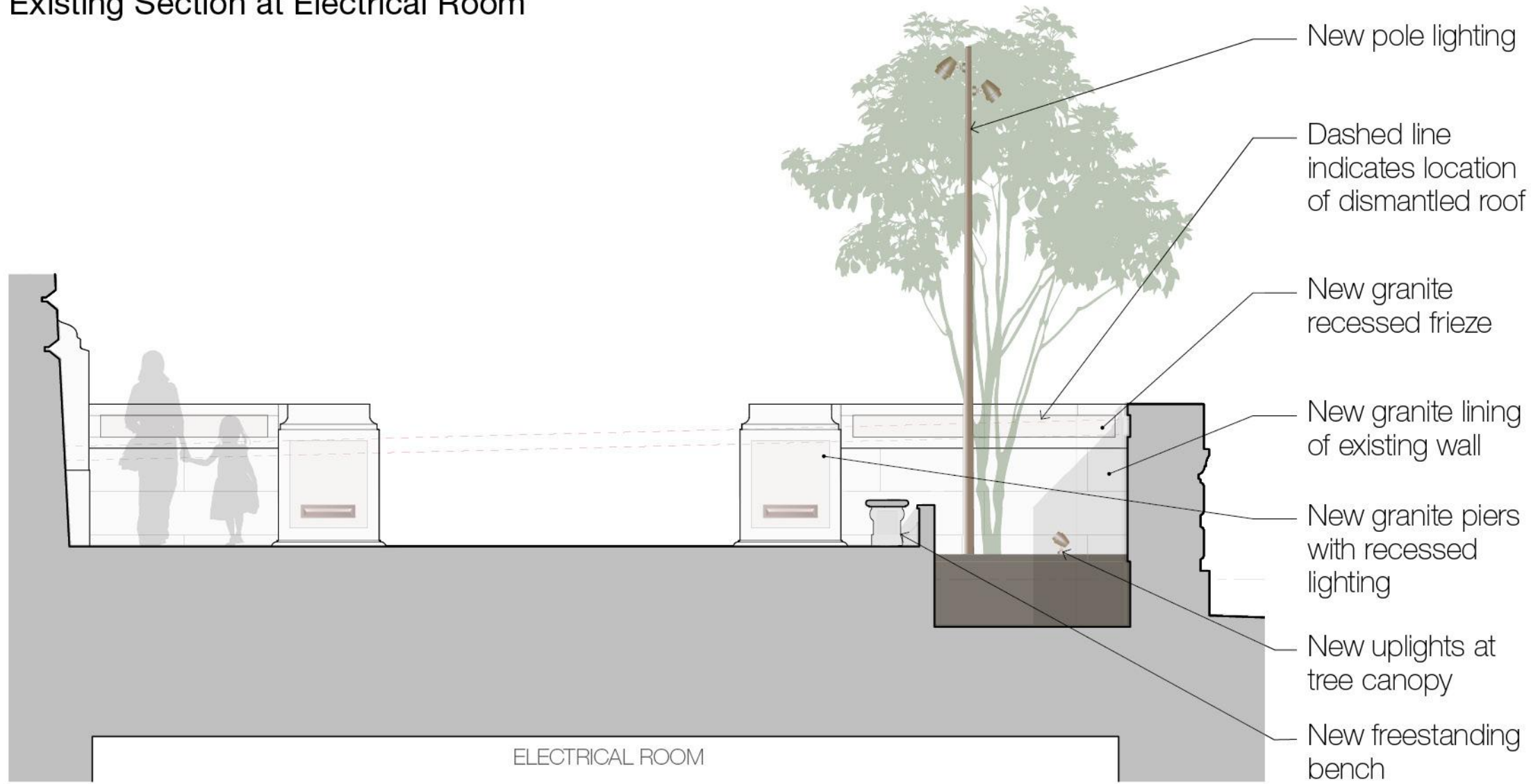
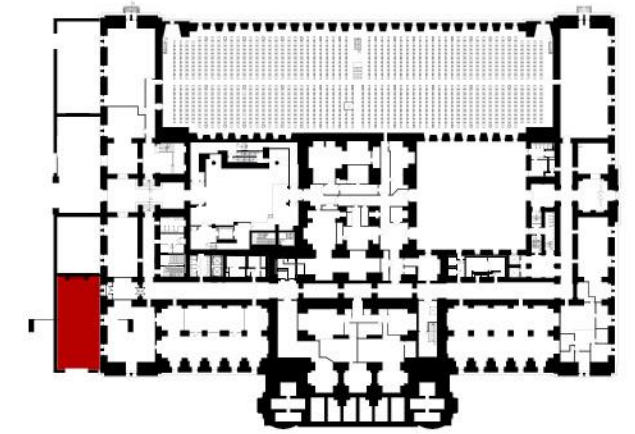
Existing Fifth Avenue Plaza materials



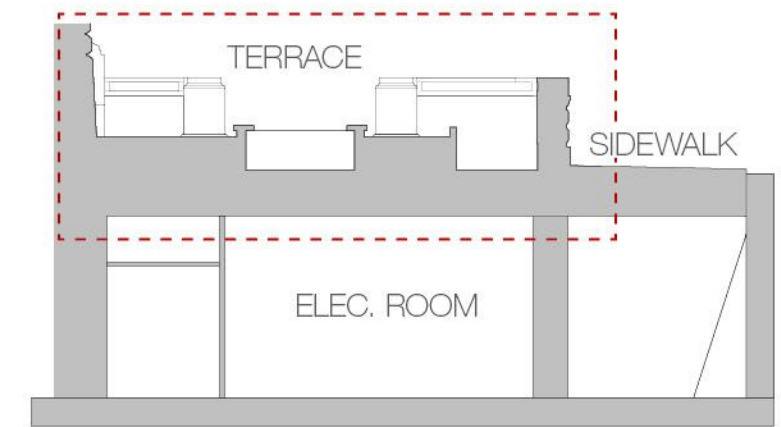
Proposed Plan at 40th Street Terrace



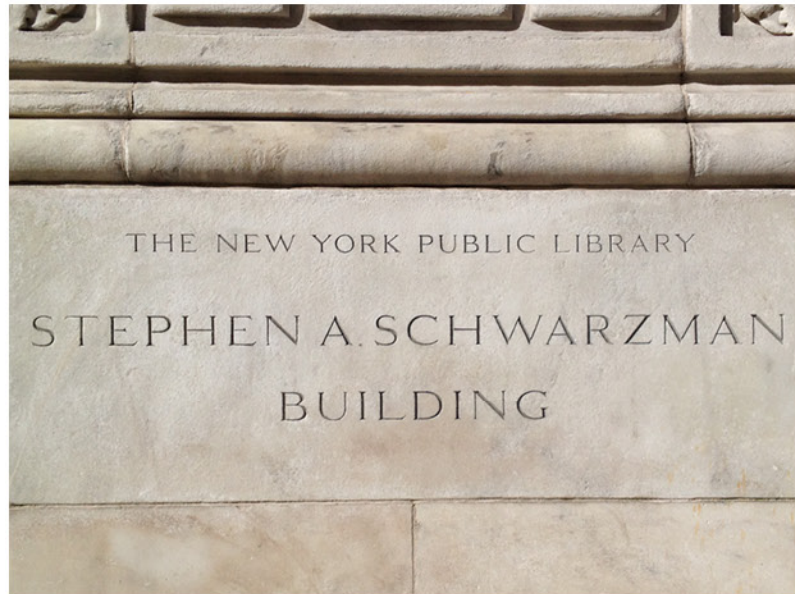
Existing Section at Electrical Room



Proposed Section at 40th Street Terrace



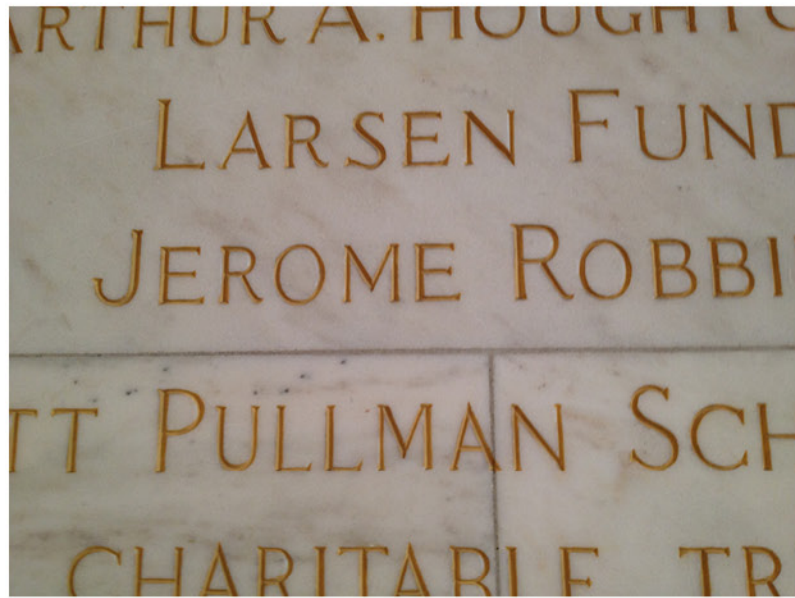
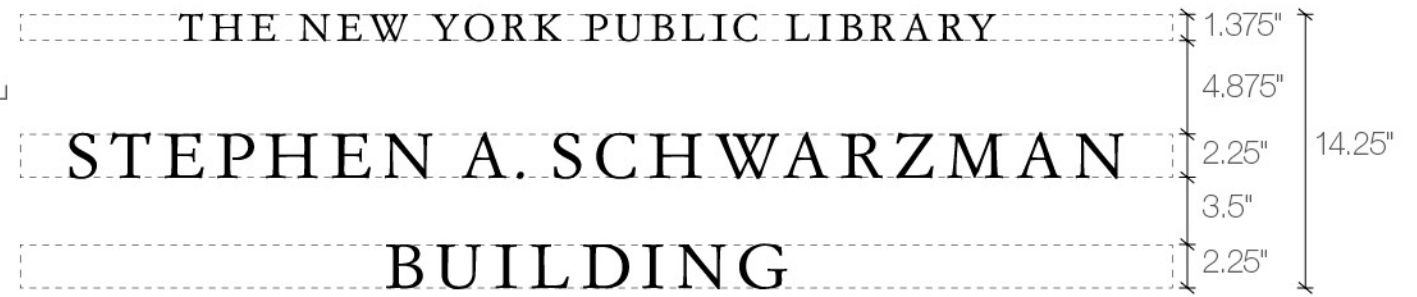
Section Through Electrical Room



▲ Typeface, c. 2008 at building exterior



▲ Proposed inscription location

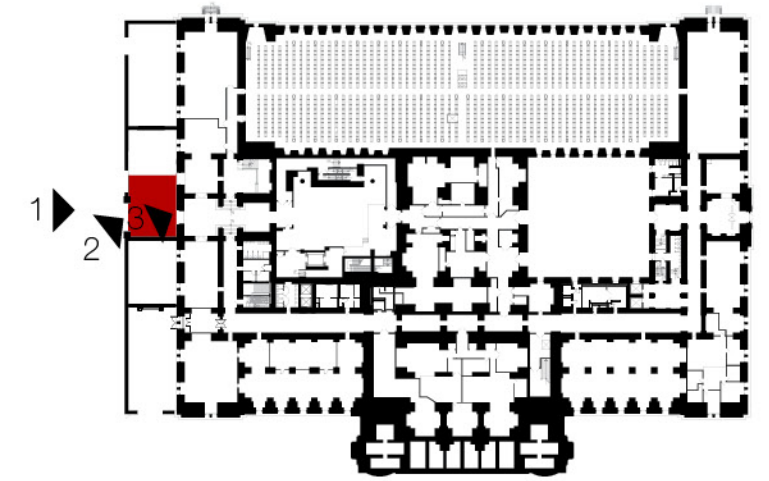


▲ NYPL Benefactors typeface at building interior



▲ Proposed inscription in paving





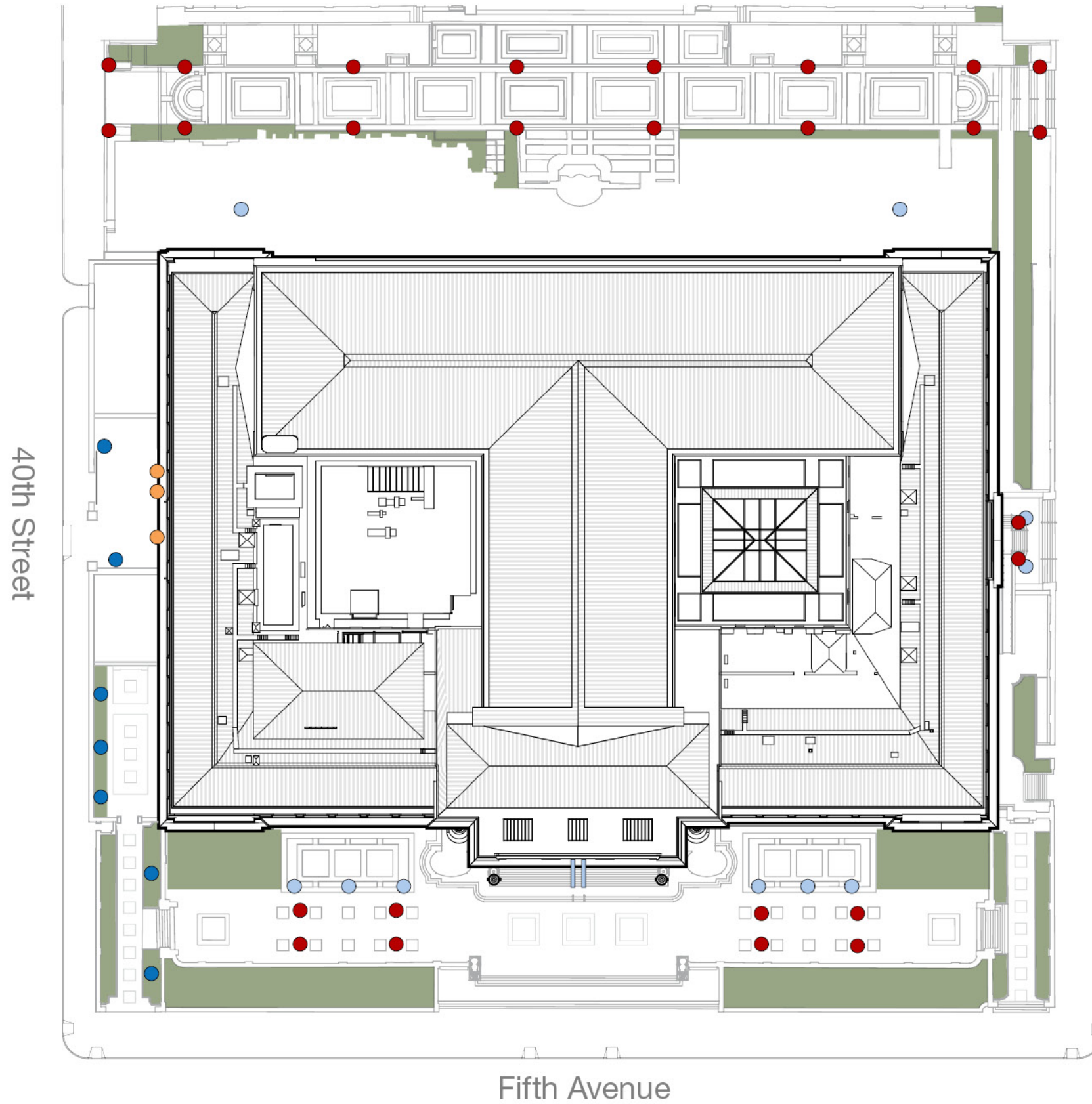
▲ 1 Arched opening at primary Loading Dock entry



▲ 2 Angled delivery truck at secondary Loading Dock



▲ 3 Damaged opening at primary Loading Dock entry



Existing & Proposed Site Lighting

42nd Street

40th Street

Fifth Avenue

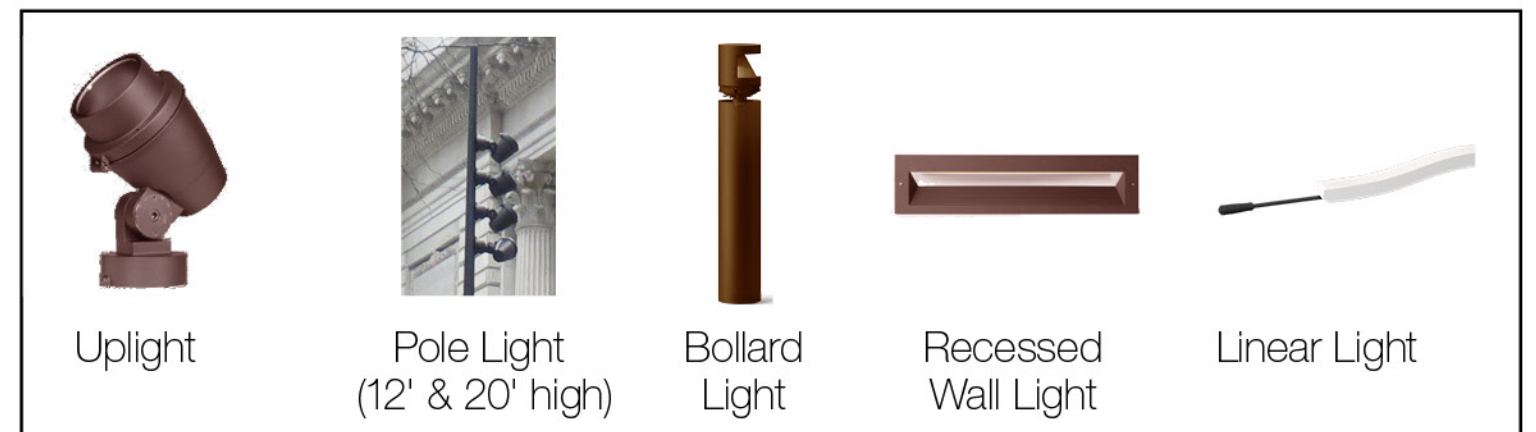
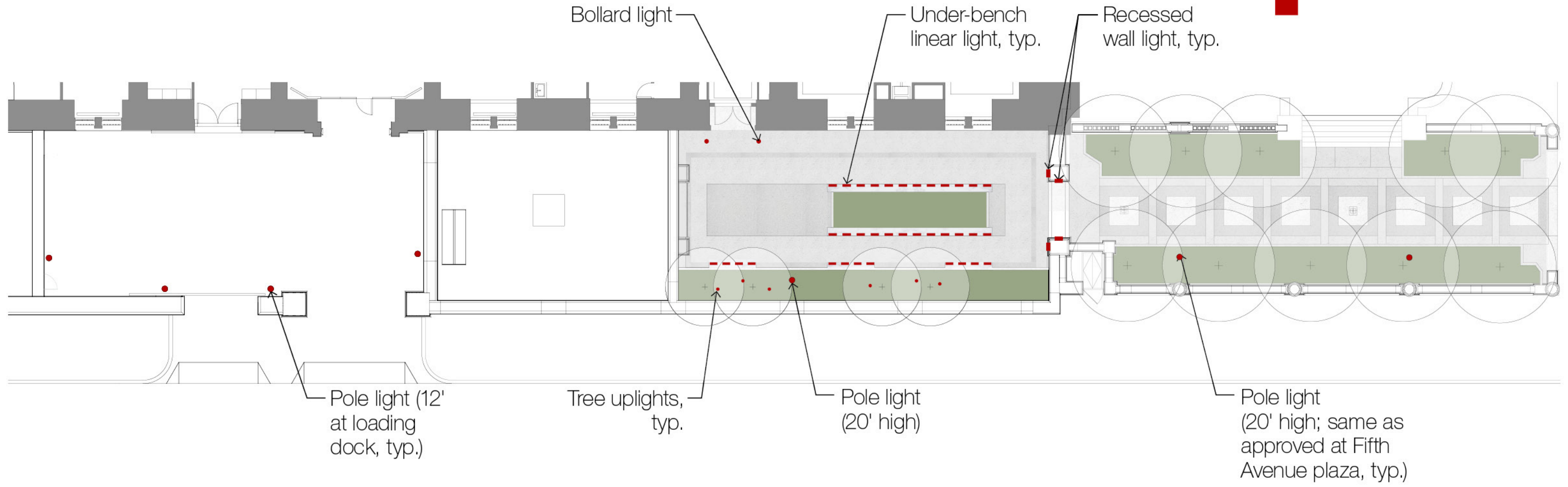
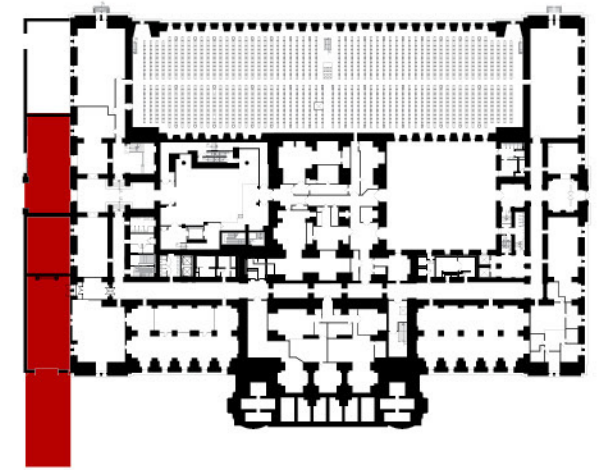
- Existing original pole lighting
- Non-original lighting
- Non-original surface-mounted lighting to be removed
- Proposed non-original pole lighting

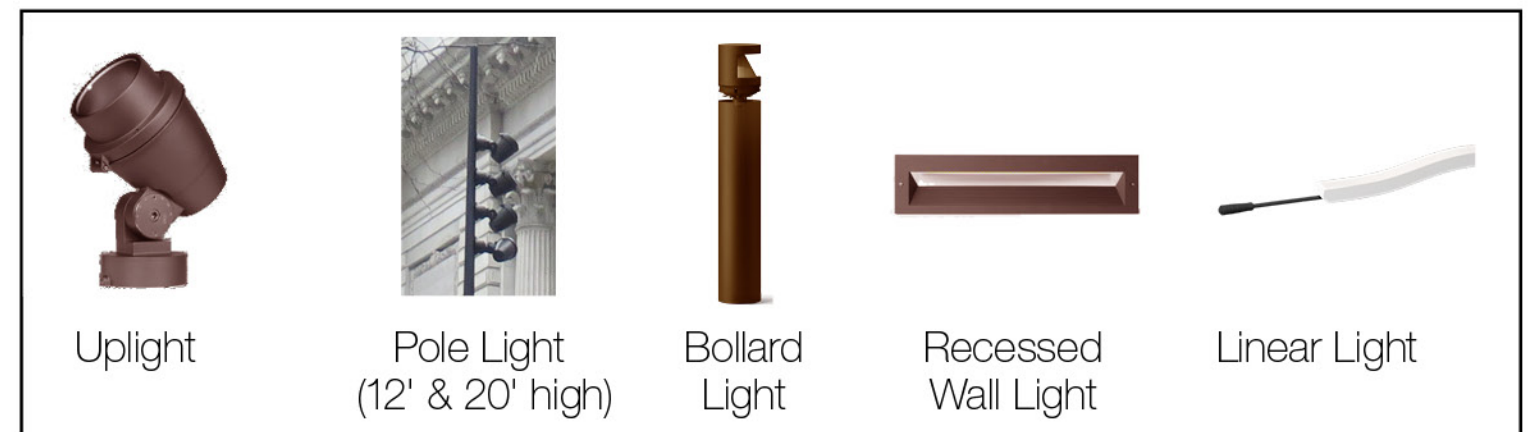
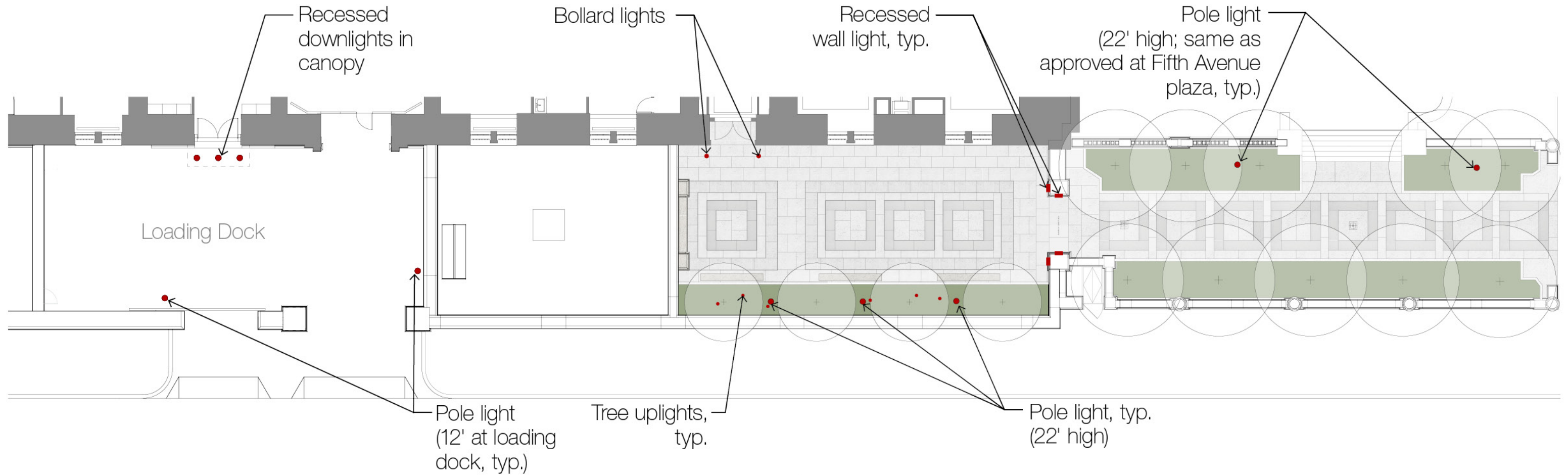
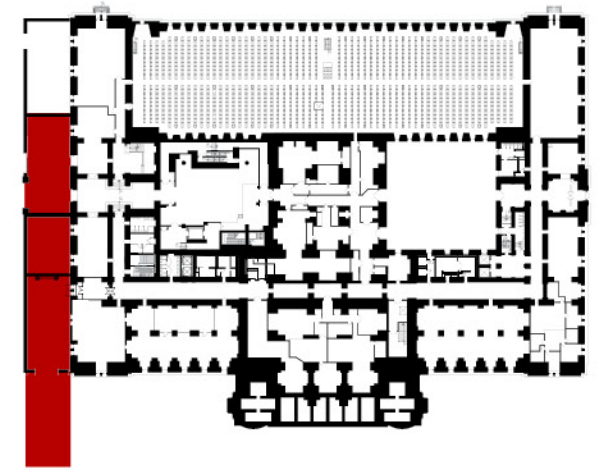


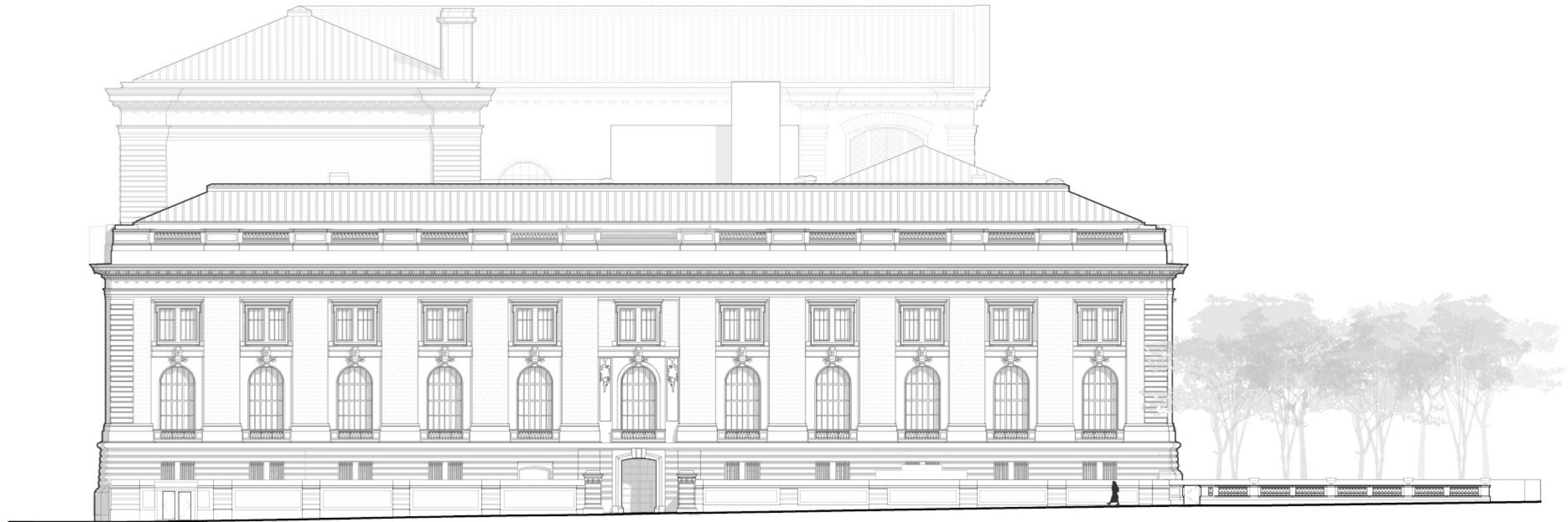
▲ Pole lighting, installed c. 2010



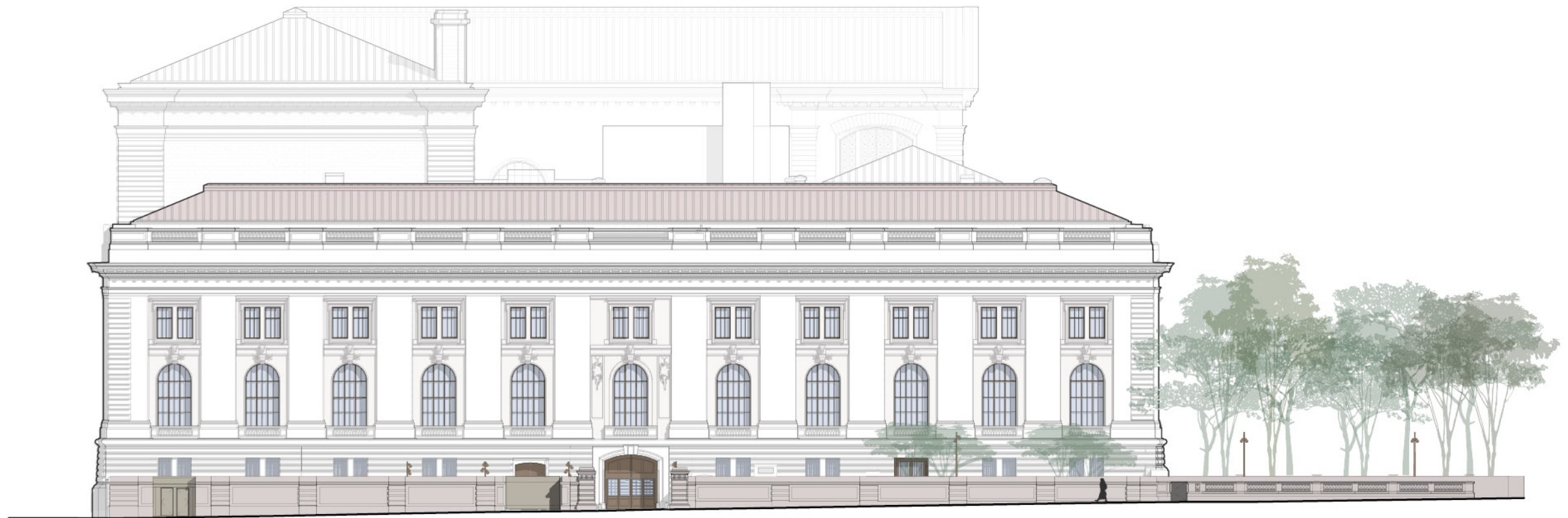
▲ Existing surface-mounted lighting at Loading Dock



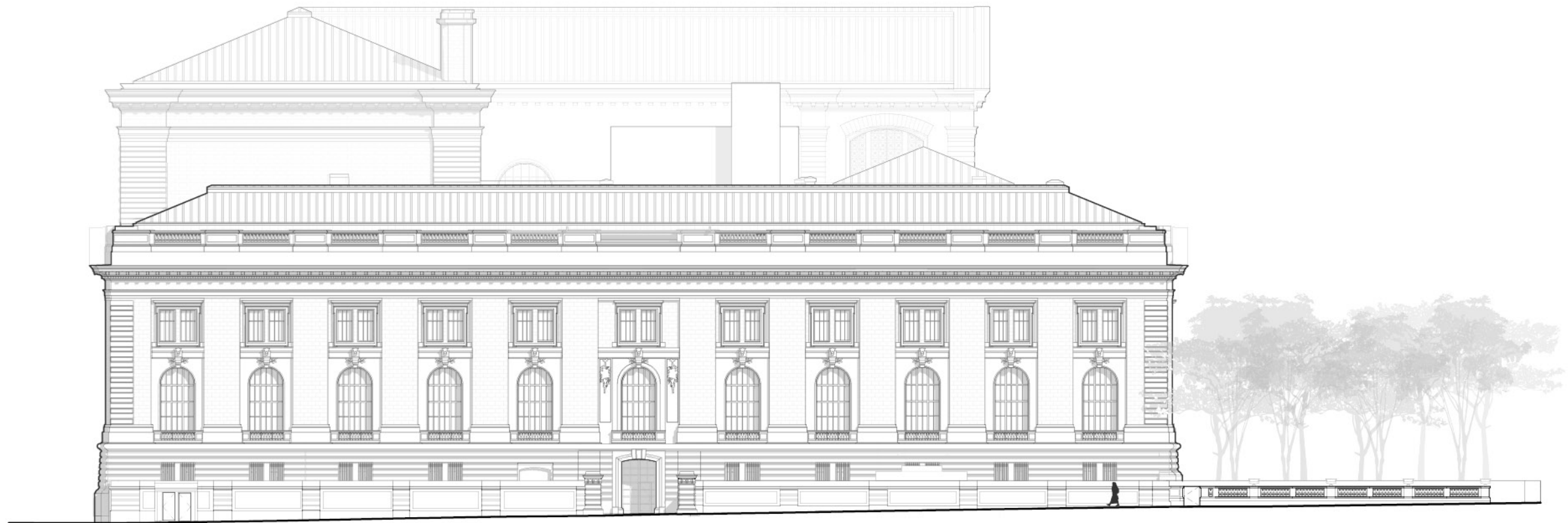




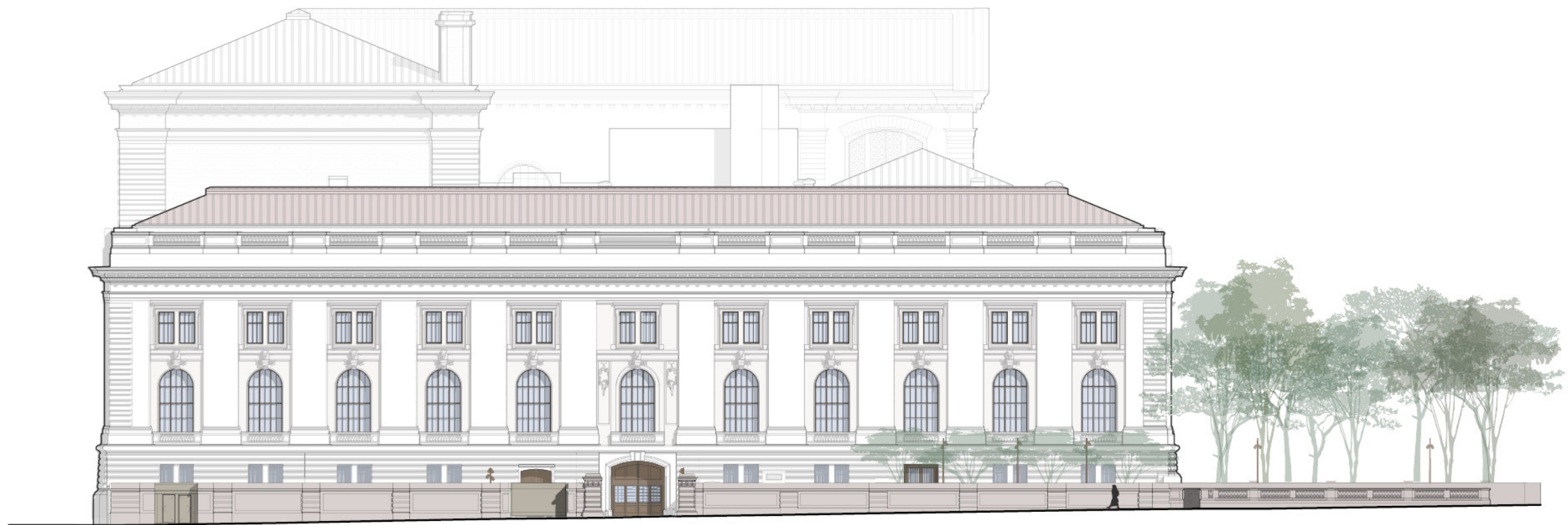
Existing 40th Street Facade



Proposed 40th Street Facade



Existing 40th Street Facade



Proposed 40th Street Facade

