

Battery Coastal Resilience News

December 2025

www.nyc.gov/site/lmcr/progress/battery-coastal-resilience.page



Image: Aerial image of The Battery (photo taken by The Battery Conservancy)

Project News

Welcome to Project Newsletter #7! We are excited to share news and updates about the Battery Coastal Resilience Project. This newsletter will provide an **overview of the latest on construction progress, plant installation, and upcoming construction work**. Read on to find out more!

Project Timeline



About the Project

The Battery Coastal Resilience Project will rebuild and elevate The Battery wharf to reduce risk from future tidal flooding and low-level coastal storms while maintaining the character and uses of the promenade and the rest of the park. The Battery Coastal Resilience Project is one of several projects, together known as the Lower Manhattan Coastal Resiliency (LMCR) Project. The project is currently in Construction Phase 1.

Sustainable Hardscape

Balancing urban development and sustainability can frequently be a challenge for any construction project. At The Battery, the design and construction team worked together to salvage many existing materials, including stone, wood, and pavers, and reincorporate them into the new site design. Consider, for example, the granite used for retaining walls, curbs, steps, and benches. To the naked eye, these features appear newly furnished, but most of this stone was actually gathered from the original park, refinished, and reinstalled to substantially reduce carbon emissions. Sustainability is also factored into the design. Permeable pavers can absorb stormwater, which reduces runoff and the risk of flooding. These features are just a few examples of how The Battery combines forward-thinking design with environmental responsibility, demonstrating a commitment to creating a sustainable, accessible, and resilient public space.



Image: Granite and wood salvaged from the original park and sleekly refinished to create a comfortable seating option for park visitors to enjoy.



Image: Permeable hex pavers are designed to capture stormwater and slow down the accumulation of runoff.



Image: The interface between paving and adjacent gardens provides a practical use for stormwater and reduces the demand on storm drainage systems.

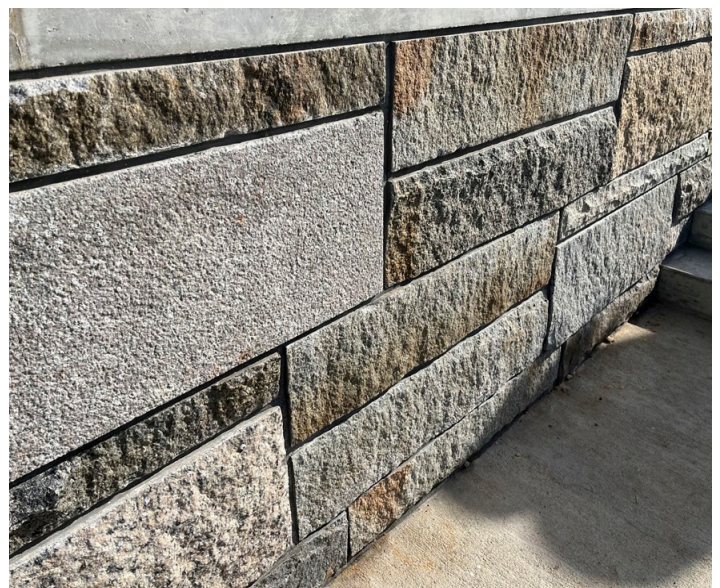


Image: To address rising sea levels, the original wharf elevation was raised by five feet and finished with salvaged granite from the original seawall.

Construction Progress

As the leaves fall and the year comes to an end, so too does construction for the first phase of The Battery. With the subsurface layers of the park complete, work can begin on the more intricate details. These include the hardscaping, as well as installing metals, wood, landscaping, and artwork. Additionally, the monuments and memorials that were once protected from heavy construction are now receiving restoration and touch-ups. Once completed, these efforts will preserve the history of the park for years to come.



Image: After a successful growing season, the trees and plants are preparing for the cold winter ahead. In the springtime, they'll bloom a diverse array of flowers.



Image: The hardscape features are finished with ornamental bronze and light poles which add both character and accessibility to the park.



Image: Preserved art panels and salvaged wood form the railing system along the wharf. Wooden piles guard the structure from potential impacts.



Image: The American Merchant Mariners' Memorial is one of many monuments that are not only protected, but restored to preserve the original character of the park.

Questions?

Reach out to the **Community Construction Liaison (CCL)**
for project related queries:
Battery Coastal Resilience CCL:
Kyle Beyer, at 347-313-8375 or
info@batterycoastalresilience.com

Construction Updates

Summary of Upcoming Work

- Continued installation of hardscape features including the upper wharf fascia granite at wharf slips, granite curbs, and walls, and precast paving units.
- Continued installation of ornamental including sea and stair railings, bronze arm rests, light poles, and refinished salvaged benches.
- Installation of wooden pile fender pile system at each slip of the wharf structure.
- Cleaning and restoration of existing monuments within the limits of construction.

Expected Work Timeline:

11/01/2025 - 01/31/2026 (~3 month duration)

Map of Open and Closed Park Areas and Access Points



Features that remain open:

- Playscape
- SeaGlass Carousel
- Bikeway
- Battery Woodland
- Urban Farm
- Bosque Fountain
- Castle Clinton
- Statue of Liberty Ferry
- Portions of the Oval Lawn
- Restaurant
- Restrooms (3)

Features that are closed:

- Battery Wharf
- Gardens of Remembrance
- Portions of the Oval Lawn

Monuments that are inaccessible:

- Admiral George Dewey Memorial
- American Merchant Mariners Memorial
- Emma Lazarus Memorial Plaque
- Korean War Veterans Monument
- Netherlands Memorial Flagpole
- Norwegian Veterans Memorial
- Peter Caesar Alberti Marker
- River That Flows Two Ways
- The Immigrants
- Walloon Settlers Memorial