

# New York City Office Of Child Support Services (OCSS)

Having a case with the Office of Child Support Services (OCSS) creates a record of all child support payments and provides a neutral go-between for parents. There are many benefits to opening a child support case, even if you already have a divorce decree or another type of agreement outside the child support program.

## Benefits

Legal  
parentage



Child support  
payments



Parent-child  
relationship



Health  
Insurance



Neutral  
Intermediary



## With Parentage Established:

Pension  
Funds



Military  
allowance



## Services

All custodial parents, guardians, and caretakers are eligible for child support services regardless of their income or immigration status. OCSS staff act in the public interest and do not represent either side of a child support case. Parties are not required to obtain the services of an attorney. In summary, OCSS offers:



Locating  
noncustodial parents



Serving summons



Establishing legal parentage



Referrals for  
genetic testing



Court referrals or  
stipulated agreements  
to establish & modify  
child support orders



Collecting & distributing  
child support payments



Enforcing child  
support orders



Child support debt  
management & Referrals  
to mediation services



Employment service referrals

## Case Process

**1**

### Enroll for Child Support Services

Access the [online application](https://nyc.gov/hra/ocss) at [nyc.gov/hra/ocss](https://nyc.gov/hra/ocss). If you are a custodial parent applying for or in receipt of cash assistance, you are required to comply with child support and will automatically be referred for services.

**2**

### Come to an agreement on child support or get an order in court

Once parentage is established, parents can work with OCSS Customer Service staff to get a child support agreement by applying the standard child support guidelines. The agreement will be filed in court prior to the hearing. Alternatively, parties can follow the traditional process of only going through court, which takes longer.

**3**

### Child support order is enforced and payments are received and disbursed. Either party can request to modify the order.

Once an order is established, the obligation amount is monitored, and our program uses Federally mandated measures to ensure payment. If there is a change in circumstances, parents can meet with Customer Service staff to adjust the order and finalize it in court or follow the traditional court process to modify the order.



# Child Support Helps Families

Nationwide, child support lifts an estimated **1 million** children out of poverty each year.

# \$795,885,523

Total Child support income collected in 2021.

91% of all the money collected goes directly to families and the remainder is used to reimburse the cash assistance benefits of some of our clients and to administer the child support program. Read more here: <http://bit.ly/CPHandook>

## 230,119

Children under 18 on the NYC OCSS caseload in December 2020. That's **1 of every 7 children** in New York City.

## 86%

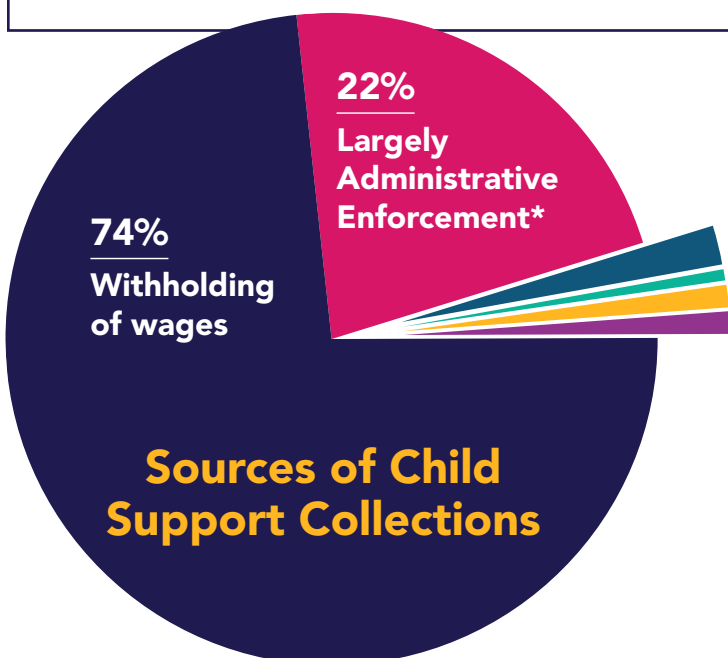
Percentage of cases with support orders as compared with the total caseload. Once an order is established, OCSS can begin to collect child support.

## 90%

Percentage of children on the OCSS caseload who are born to unmarried parents and for whom paternity has been established.

## \$7,142

Average amount collected per family in 2021 for accounts receiving payments.



- 2% UIB Intercepts
- 0.1% State Tax Intercepts
- 1% IRS Tax Intercepts
- 1% Other States

\*"Administrative Enforcement" means actions authorized by federal regulations which are taken to enforce a child support order without obtaining an order from the Family Court. This includes passport denial, drivers license suspension, and credit reporting.

All data is as of December 2021, except if noted otherwise.

Learn more today at [nyc.gov/hra/ocss](http://nyc.gov/hra/ocss) or email us at [dcse.cseweb@dfa.state.ny.us](mailto:dcse.cseweb@dfa.state.ny.us)