

Flatbush African Burial Ground Remembrance and Redevelopment Task Force Meeting #7

September 1st, 2021

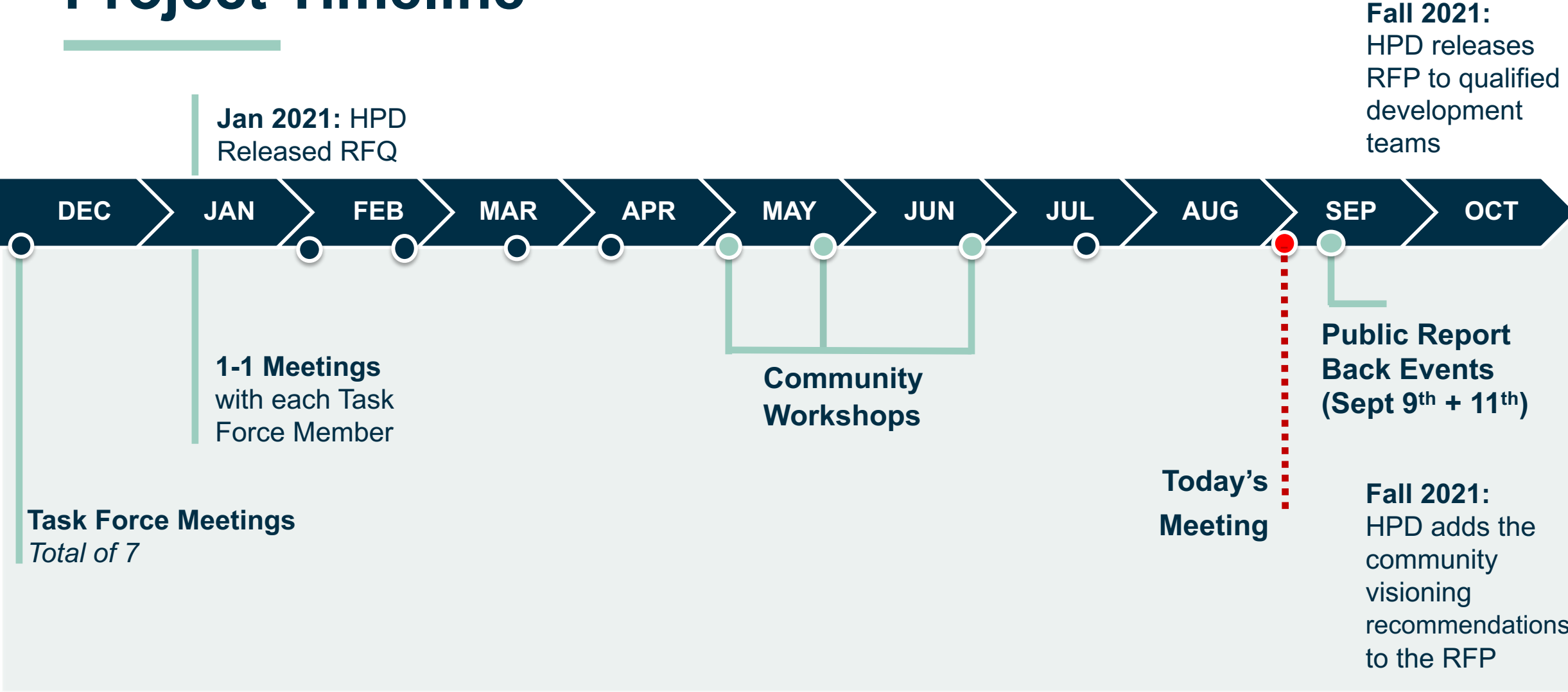


Welcome

Goals for today's session:

- To review and discuss the draft recommendations to be included in the Community Visioning Report before we share them with the public.

Project Timeline



Zoom 101

Framing best practices for this platform.

- **The chat box is a great tool!** Use the chat box for questions, comments and thoughts.... This is a helpful space for discussion.
- **Please stay on mute** unless you are asking a question or in the breakout sessions.
- **We love seeing you!** If you are comfortable, please keep your video on. It helps me to see if you are nodding, confused... or looking to say something.

IN FULL TRANSPARENCY

- We are currently recording
- We are currently livestreaming
- The recording will be hosted on the FABGRR website after the meeting

Descendant Community Research Update

- HPI has completed their research report, **“Archaeological Topic Intensive Study to Identify the Descendant Community for the 2286 Church Avenue Site.”**
 - It includes detailed information about their research questions, methodology, results and conclusions, as well as recommendations for further study, including by the Task Force and/or the Descendant Community.
- The document is publicly available on the Landmarks Preservation Commission website and FABGRR Task Force website and was emailed to the Task Force and interested community members in early August.
 - http://s-media.nyc.gov/agencies/lpc/arch_reports/1914.pdf
 - <https://fabgtaskforce.nyc/sites/default/files/2021-08/1914.pdf>

Task Force Members

Co-Chairs

- **Eric Adams**, Brooklyn Borough President
- **Mathieu Eugene**, District 40 Council Member

Task Force Members

- **Dr. Ben Talton**, Author and Professor of African History from Temple University
- **Carol Reneau**, Community Board 17
- **Chantal Eugene Desdunes**, Erasmus Hall High School for Youth and Community Development
- **Kathy De Meij**, CAMBA
- **Lauren Collins**, Flatbush Ave. BID & Church Avenue BID
- **Naima Oyo**, Ifetayo Cultural Arts Academy
- **Natiba Guy-Clement**, Center for Brooklyn History at Brooklyn Public Library
- **Robin Redmond**, Executive Director of Flatbush Development Corp.
- **Pastor De Lafayette Awkward**, Flatbush Reformed Church
- **Rev Sheldon N.N. Hamblin**, St. Paul's Church in the Village of Flatbush
- **Ron Schweiger**, Brooklyn Borough Historian
- **Roslyn Joinvil**, Office of District 40 Council Member
- **Ryan Lynch**, Office of Brooklyn Borough President Eric Adams
- **Samantha Bernardine**, Erasmus Hall High School for Youth and Community Development
- **Shawn Campbell**, Community Board 14
- **Tyrone McDonald**, Neighborhood Housing Services of Brooklyn CDC Inc. (NHS Brooklyn)

City Team in Attendance



- **Josh Saal**, Deputy Director of Predevelopment, HPD
- **Uriah Johnson**, Project Manager in Neighborhood Planning, HPD
- **Perris Straughter**, Assistant Commissioner for Planning & Predevelopment, HPD



- **Lena Ferguson**, Senior Project Manager, Neighborhood Strategies, NYCEDC



- **Timothy Frye**, Director of Special Projects and Strategic Planning, LPC

Past Meeting Resources

Staying up-to-date on this project

- The recording, notes and presentations for Meetings #1-6 and the 3 Community Workshops are currently hosted on the project website:

fabgtaskforce.nyc



Get Involved

The success of the Flatbush African Burial Ground Remembrance and Redevelopment Task Force will rely on the involvement of the larger Flatbush community to support the shaping of the final recommendations. Opportunities will include:

- **Viewing livestreamed Task Force meetings** - To ensure an open and transparent process, all Task Force meetings will be livestreamed on this site, with meeting minutes and project documents being shared here as well. This page will be updated as recordings and documents become available.
- **Completing a project questionnaire** - To maximize input, this spring, an online questionnaire will be shared across the community to solicit feedback on the future of the project.
- **Attending workshops** - Two virtual public workshops will take place this spring to gather input on how best to honor the past and identify opportunities for the new development to support the community.

Historical Perspectives, Inc. (HPI) is seeking **public insight to help uncover more of the site's history** and more fully document the enslaved population of Flatbush. If you have information to share, please [fill out this form](#) to support this ongoing research effort.

Task Force Livestreams

Watch livestreamed Flatbush African Burial Ground Remembrance and Redevelopment Task Force meetings below:



March 24, 2021 - Focus: Affordable housing, non-residential uses, including youth space and programming, and public engagement.

[Contact the Project Team](#)

Task Force Meeting Records

To make the Task Force's process as accessible as possible, records of the Task Force

Community Visioning Report Overview



This process is to identify recommendations to be included in the Request for Proposals (RFP) for the future project.

Honoring of the site recommendations:

- Memorialization
- The sensitive handling of human remains, if discovered in the future

Affordable housing recommendations:

- Populations served
- Non-residential amenities including youth programming
- Site layout and urban design

Recommendations for the engagement moving forward

Request for Proposals (RFP)

- **City-issued document requesting development teams to submit proposals**
- **Maximize benefits to the public**
 - City agency review process ensures selected team has proposed a project that aligns with the needs of the City and the community and ensures that team is able to successfully execute such project.
- **City agency review**
 - City staff from architecture, financing, community development, and planning backgrounds evaluate proposals to select a proposal and development team.
- **Evaluating proposals**
 - Alignment with citywide goals.
 - Project specific goals shaped by community feedback.

RFP Goals and Report

- **City-wide goals**
 - Increase access to affordable housing across neighborhoods
 - Increase M/WBE and non-profit participation
 - Encourage sustainability and better building performance (beyond code)
- **Project specific goals shaped through community engagement**
 - Community Visioning Report summarizes priorities and feedback and is referenced throughout the RFP document
 - Existing conditions, requirements, expectations, and goals for future development tied back to Report
 - Honoring Site History
 - Affordable Housing Development Program
 - Relationship between Task Force, the Community, the Future Developer, and The City

Report, RFP, and Honoring Site History

- **Proposals evaluated on how they prioritize memorialization design, programming, & access.**
 - Relationship between open space, building, burial ground and memorial
 - Overall project vision for honoring descendants with reverence and respect (e.g. programming, design, etc.)
 - Development Team's plan for community engagement related to memorial design after selection and their ability to execute such a plan
- **Process and Expectations**
 - Coordination between the Task Force, wider community, future developer and the City agencies moving forward
 - Sets forth priorities for memorial, which selected development team will have to achieve through coordinated engagement after RFP selection
 - Design and programming of memorial
 - Defining how future memorial will be owned, maintained and operated

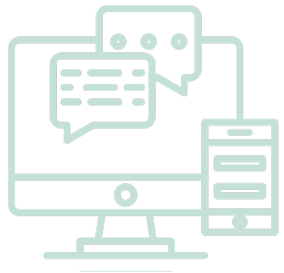
Project Timeline



Project Timeline



Community Visioning Report Overview



6 Task Force Meetings

- On average 11 of 17 Task Force members attended each meeting

3 Community Workshops

- 70+ attendees at each community workshop



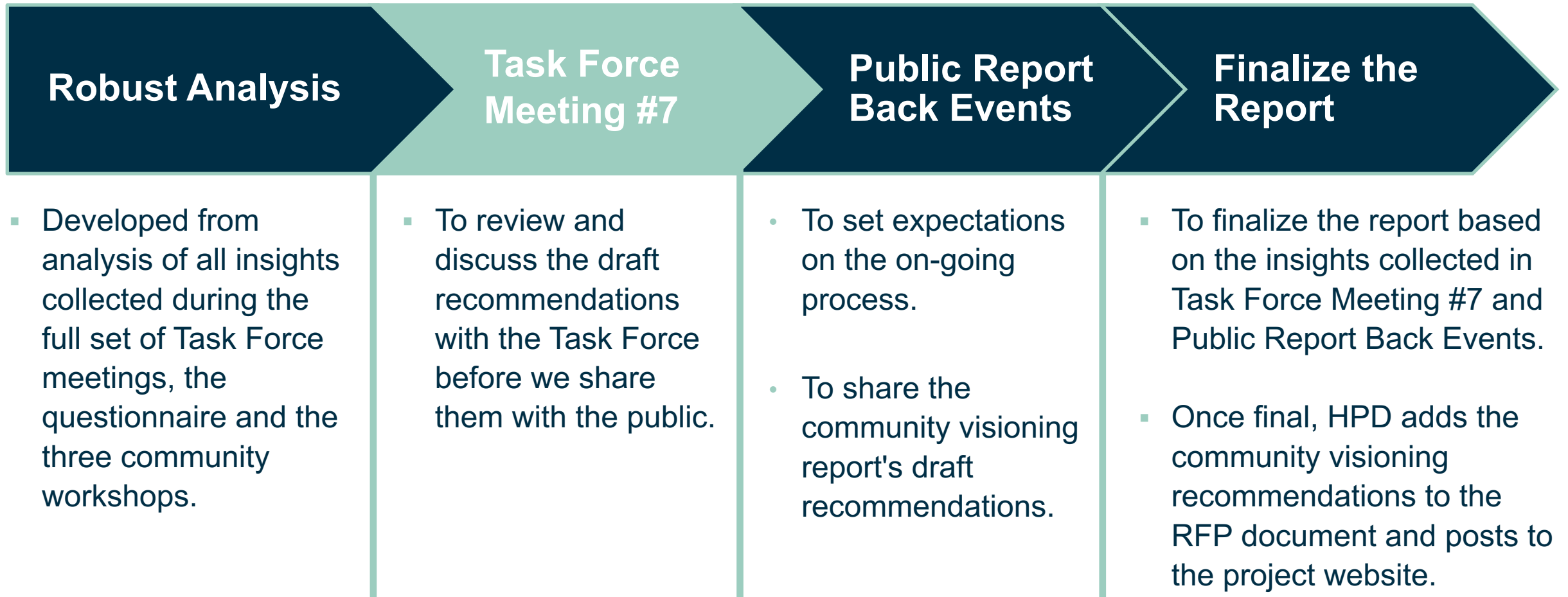
Community Questionnaire

- 200+ completed, both online and in person

Limitations of our Research

- Covid-19 Pandemic
- Digital Divide
- Project Timeline
- Lack of Youth Voice
- Reaching Non-English Speakers

Report Development Process



Community Visioning Report – Table of Contents

1. INTRODUCTION

- Overview of the project

2. COMMUNITY-ENGAGEMENT PROCESS

- Process Overview
 - Goals of Process & Research Methodology
 - Limitations of our Research
- Overview of Community Engagement
 - Outreach Methodologies
 - Engagement by the numbers

3. RECOMMENDATIONS

- Intention of the Recommendations
- Honoring the Site History
- The Affordable Housing Development
- Relationship between Task Force, the Community, the Future Developer, & The City

4. SITE HISTORY

- Multi-page overview of Site History

5. ACKNOWLEDGEMENTS

- Review of City team
- Thank you to Task Force and the Public

Questions

Do you have any questions about the Report development?

Do you have any questions about the Report distribution?

Process Notes:

- Feel free to use use the **CHAT box** to share all your questions.

Community Visioning Report Recommendations Review

Guidelines for Productive Conversation

- Have empathy to, and awareness of, the unique perspectives in the virtual room.
- Being conscientious and acknowledging to the lens and perspective you speak of. Where possible, speak from the I. Acknowledge if you are speaking from your lived experience, the lens of your organization or an assumption.
- Assume the best intentions of your fellow group members. Be mindful not to make assumptions about others or their experiences.
- Be comfortable with discomfort as we together unlearn history related to slavery in this community, and be wary of oppressive, offensive or racialized language that may be triggering to others.

Community Visioning Report

Framing for today's review

- We are still writing the report.
- We will be reviewing key insights for **all recommendations**.
- For each topic, we will share the draft priorities and findings in bullet point form.
- We will be sharing a condensed version of what we share today during the Public Report Back Events.
- We will not focus the feedback on wording or doing line-by-line edits.

Guiding Questions for the Feedback:

- How well does this draft reflect what you heard?
- Is anything missing?
- Any questions or concerns?

Vision for Honoring the Site's History

RECOMMENDATIONS:

1. Honor those interred with reverence and respect
2. This site's history should spark a larger, ongoing conversation and education about the legacy of slavery citywide, statewide, and nationwide.
3. The site's history must continue to be researched and preserved, even after project is completed.

Additional Context: Concerns from participants

Vision for Honoring the Site's History

#1: Honor those interred with reverence and respect

- Task Force members expressed the importance to appropriately honor, memorialize and draw significance to the complex history of the site.
- Workshop participants believe that the memorial should be preserved in perpetuity.
- Questionnaire participants expressed that reverence can be demonstrated through education, whether in passing with the implementation of educational markers and/or through engagement with the space, building, and other elements.

Vision for Honoring the Site's History

#2: This site's history should spark an ongoing conversation and education about the legacy of slavery city-, state-, and nationwide.

- Task Force members and workshop participants expressed:
 - Flatbush is a historically Black and Caribbean community. There needs to be an acknowledgement of the history and the current context of the African diaspora.
 - Concern that the neighborhood is unaware of the history connected to this site. This site represents a great opportunity to reflect and educate neighbors and youth on a rich history rarely brought to light.
 - This is an opportunity to shift the narrative from shame to one of pride and resilience.

Vision for Honoring the Site's History

#3: The site's history must continue to be researched and preserved, even after the project is completed.

- Task Force members and workshop participants articulated that research should not stop here:
 - Research on this site's history and enslaved Africans in Flatbush should continue beyond the timeframe of the site's development.
 - There should be explicit and intentional connections to those buried in the burial ground and to the African diaspora through education, workshops, and public events at the site.
- Task Force members agreed with workshop participants that future research and analysis of historical archives related to the site should be more inclusive community effort.

Vision for Honoring the Site History

Concerns from participants:

- Through all types of engagement, participants expressed that this site should remain undisturbed because it is sacred ground. It should be a space with the sole purpose of acknowledging and paying reverence to the site's history.
- Many Task Force members are concerned if systemic racism in housing policy is not addressed, it will be further exacerbated through health and wealth disparities for Black communities.
- Questionnaire participants articulated that there is historic trauma spanning from the era of slavery through today. The City should commit to a substantive engagement process that will not add to a trauma of historic inequity and injustice.

Community Vision for Honoring the Site History

RECOMMENDATIONS:

1. Honor those interred with reverence and respect
2. This site's history should spark a larger, ongoing conversation and education about the legacy of slavery citywide, statewide, and nationwide.
3. The site's history must continue to be researched and preserved, even after project is completed.

Additional Context: Concerns from participants.

Guiding Questions for the Feedback:

- How well does this draft reflect what you heard?
- Is anything missing?
- Any questions or concerns?

Sensitive Handling of Human Remains

RECOMMENDATIONS:

1. Human remains should be interred back on the site and left undisturbed in respect of those buried there.
2. Honor human remains discovered in the future with traditional ceremonies that invite the whole community to pay reverence.
3. Human remains should be handled with extreme sensitivity and should be DNA tested to support research and education in relation to the Flatbush African Burial Ground.

Sensitive Handling of Human Remains

#1: Human remains should be interred back on the site and left undisturbed in respect of those buried there

- Task Force and workshop participants agree that reburial of the human remains on the site brings respect to the site and preserves the legacy and sacredness of the burial ground and all those who were buried here.
- Workshop participants expressed concerns that moving human remains to the nearby Dutch Reformed Church would add another layer of separation and would further perpetuate the legacy of the displacement of African human remains from the site.

Sensitive Handling of Human Remains

#2: Honor human remains discovered in the future with traditional ceremonies that invite the whole community to pay reverence

- Both Task Force and workshop participants recommend honoring human remains discovered in the future with traditional ceremonies and cultural rituals that can provide a deeper opportunity for reverence.
 - Workshop participants recommended that ceremonies should be open to the entire community to pay their respects and understand the history of the site's context in Flatbush.
 - Task Force members expressed that it is important to build relationships with cultural leaders and institutions of the African diaspora to help lead this effort to support the oversight and cultural sensitivity of such ceremonies.

Sensitive Handling of Human Remains

#3: Human remains should be handled with extreme sensitivity and should be DNA tested to support research and education in relation to the Flatbush African Burial Ground.

- Ongoing research is a critical priority for both the Task Force and workshop participants:
 - DNA testing can support site education and build awareness across the community, as well as education of the transatlantic slave trade in the city's context.
 - DNA testing can link the human remains tested to descendants.
- Many workshop participants felt that DNA is an indication of reverence and honoring the legacy and history of enslaved Africans whose histories are often erased.

When considering this recommendation, it is important to note the difficulty of testing for DNA without causing disturbance or some destruction to the remains being tested.

Sensitive Handling of Human Remains

RECOMMENDATIONS:

1. Human remains should be interred back on the site and left undisturbed in respect of those buried there.
2. Honor human remains discovered in the future with traditional ceremonies that invite the whole community to pay reverence.
3. Human remains should be handled with extreme sensitivity and should be DNA tested to support research and education in relation to the Flatbush African Burial Ground.

Guiding Questions for the Feedback:

- How well does this draft reflect what you heard?
- Is anything missing?
- Any questions or concerns?

Memorialization: Primary Use of Memorial

RECOMMENDATIONS:

1. A place for education that connects with the broader NYC history of enslaved Africans.
2. A place for reflection and contemplation.

Additional Context: Key features and design ideas for the memorial

Primary Use of the Memorial

#1: A place for education that connects with the broader NYC history of enslaved Africans

- Workshop participants stated that the site should become a space to educate and reflect with neighbors on this rich history that is rarely discussed.
- Task Force and workshop participants highlighted:
 - Prioritizing the memorial space as accessible to local students and schools. It should be a free open space that not only conveys respect but is also a safe space for youth to learn about their ancestors.
 - We heard ideas for developing school curriculums and other programming ideas to support the priority of education.

Questionnaire Insights:

63% identified the memorial as a place for education that prompts discussion about the site's history.

52% identified the memorial as a place that connects to the broader NYC history of enslaved Africans

Questionnaire respondents do not respond to all questions. For these question, there were 141 respondents.

Primary Use of the Memorial

#2: A place for reflection and contemplation

- Workshop participants and Task Force members articulated that seating is critical to create a space where one can gather with others and pay respect.
- Some workshop participants noted that the intersection of Bedford and Church Avenues is always very busy. It will be difficult to create a space at the intersection that can have the type of atmosphere that a memorial would require, which merits the consideration of other potential locations on the site.

Questionnaire Insights:

45% desired that the memorial serve as a place for reflection and contemplation.

Questionnaire respondents do not respond to all questions. For these question, there were 141 respondents.

Primary Use of the Memorial

Key features and design ideas for the memorial

- Workshop participants desired that the memorial incorporate an informational plaque or marker for people to be able to learn about what is going on at the site.
- They also noted learning from nature would be another way of connecting and paying respect to this history.
- Questionnaire participants highlighted that education and interactive technology can go hand in hand to educate youth.
- Task Force members indicated that the memorial should incorporate features that invite and engage the public.

Questionnaire Insights:

47% identified a **monument** as a key design feature.

37% identified an informational **plaque** as a priority.

46% of 143 respondents identified **garden and parks landscape** features as necessary features

Questionnaire respondents do not respond to all questions. For these question, there were 143 respondents.

Primary Use of the Memorial

Key features and design ideas for the memorial

- Both Task Force members and workshop participants expressed:
 - Memorialization design, programming and access should be *the main priority*. The building program and other attributes should come second.
 - Memorial design needs to reflect the community visioning, not an after thought.
 - Memorialization needs to balance openness and reverence. The memorial needs to be both accessible to the public and a place for quiet reflection.
- Task Force members were concerned that the memorial needs funding to ensure posterity for future generations.

Memorialization: Primary Use of Memorial

RECOMMENDATIONS:

1. A place for education that connects with the broader NYC history of enslaved Africans.
2. A place for reflection and contemplation.

Additional Context: Key features and design ideas for the memorial

Guiding Questions for the Feedback:

- How well does this draft reflect what you heard?
- Is anything missing?
- Any questions or concerns?

Memorialization: Location of the Memorial

RECOMMENDATIONS:

1. Memorialization should not disturb or further desecrate the burial ground.
2. The memorial should be visible and accessible to the community while accounting for the busy intersection.
3. Memorialization should be integrated into the building design.

Location of the Memorial

#1: Memorialization should not disturb or further desecrate the burial ground.

- Across engagement platforms, community members strongly expressed that every effort to not further desecrate the burial ground should be taken.
 - The key to achieving this is **not building on the known footprint** of the African Burial Ground.
 - Many raised concerns about the that the burial ground may be larger than the known footprint and questioned how a developer might ensure the burial ground will not be disturbed.

Location of the Memorial

#2: The memorial should be visible and accessible to the community while accounting for the busy intersection.

- Community participants stressed that the memorial space should be visible to the community and immediately accessible.
- Workshop participants and Task Force members thought a corner memorial site, could be a great place for memorialization, as it would overlap with the known footprint of the African Burial ground and is a high traffic area.

Questionnaire Insights:

55% chose “Memorial should be accessible to the public at all times of day” as one of their top priorities for how memorialization should interact with the building.

Questionnaire respondents do not respond to all questions. For these question, there were 137 respondents.

Location of the Memorial

#3: Memorialization should be integrated with the building design.

- Both Task Force members and workshop participants prioritized that there should be a specific vision of how the building will be respectful of the site history while integrating memorial ideas and open space.
 - Memorialization should incorporate design features that invite and engage the public from the sidewalk.
 - A museum space was consistently raised as an option to intentionality design towards memorialization and respecting the site history.
 - Connecting the memorial to the building's interior is important. Integrated indoor and outdoor features can offer a multi-pronged memorialization approach.

Memorialization: Location of the Memorial

RECOMMENDATIONS:

1. Memorialization should not disturb or further desecrate the burial ground.
2. Memorial is visible and accessible to the community while accounting for the busy intersection.
3. Memorialization should be integrated into the building design.

Guiding Questions for the Feedback:

- How well does this draft reflect what you heard?
- Is anything missing?
- Any questions or concerns?

Building Design

RECOMMENDATIONS:

1. Maximize open space, ensuring it is accessible and of high quality.
2. Prioritize Memorialization including through the building footprint.
3. Building design should be contextual to the neighborhood and account for the high volume of foot traffic at the Bedford-Church intersection

Building Design

#1: Maximize open space, ensuring it is accessible and of high quality.

- Across community feedback provided there was a strong preference toward maximizing quality open space irrespective of the building design, massing or height.
- Open space on the site should feel welcoming and accessible and not that it belongs to the building.
- Task Force members and workshop participants expressed that open space should be multi-purpose.

Questionnaire Insights:

49% chose “**walking path and seating**” for how the open space should be programmed.

56% chose “**flowerbeds, trees, gardens**” for how the open space should be programmed.

Questionnaire respondents do not respond to all questions. For these question, there were 124 respondents.

Building Design

#2: Prioritize memorialization including through the building footprint

- Task Force and workshop participants communicated:
 - To not build on the African Burial Ground's known footprint. The building should also not be built over the location of where human remains were found.
 - That open space should intentionally focus on Memorialization.
 - The building footprint should be minimized to provide ample room for open space that allows the community to honor the site's history.

Questionnaire Insights:

51% chose “maximize open space and memorial - building is taller to allow for more of the site to be reserved for open space and a public memorial” as one of their building design priorities.

This is in contradiction to concerns of building height that were raised by the Task Force and in community workshops.

*Questionnaire respondents do not respond to all questions.
For these question, there were 108 respondents.*

Building Design

#3: Building design should be contextual to the neighborhood and account for the high volume of foot traffic at the Bedford-Church intersection

- Task Force members and questionnaire respondents highlighted that building design should be contextual to the neighborhood.
- All participants stressed that the complexities of maintaining public space next to a busy intersection should be addressed. This location currently struggles with litter and waste management issues.
- Building design should implement features and initiatives to foster a safe, clean and reflective open space.

Questionnaire Insights:

50% chose “trash receptacles” as one of their top priorities for public amenities on this site.

Questionnaire respondents do not respond to all questions. For these question, there were 123 respondents.

Building Design

RECOMMENDATIONS:

1. Maximize open space, ensuring it is accessible and of high quality.
2. Prioritize Memorialization including through the building footprint.
3. Building design should be contextual to the neighborhood and account for the high volume of foot traffic at the Bedford-Church intersection.

Guiding Questions for the Feedback:

- How well does this draft reflect what you heard?
- Is anything missing?
- Any questions or concerns?

Prioritization of Population Served

RECOMMENDATIONS:

1. Seniors should be prioritized for affordable housing.
2. Residents in the neighborhood living at the extremely low and very-low-income level should be prioritized for affordable housing.
3. The residents of Flatbush should be prioritized for new affordable housing opportunities in the neighborhood.

Additional Context:

- *The opportunity for homeownership.*
- *Interest in a Community Land Trust.*

Prioritization of Population Served

#1: Seniors should be prioritized for Affordable Housing

- Workshop participants discussed that seniors make up a huge proportion of the neighborhood and are rapidly being priced out. Many of them are caregivers for multi-generational families.
- Task Force members expressed that affordable housing should meet the needs of seniors, as many of them are struggling to remain in the neighborhood.

Questionnaire Insights:

47% prioritized seniors and elderly households for affordable housing on the site

Questionnaire respondents do not respond to all questions. For these question, there were 125 respondents.

Prioritization of Population Served

#2: Residents in the neighborhood living at the extremely low and very-low-income level should be prioritized for affordable housing

- Workshop participants agreed with neighborhood demographic data presented by HPD, which indicated that there is a significant number of residents living at the extremely low and very-low-income bracket that include young adults and multi-generational families.
- Task Force members expressed the need to offer different unit types and sizes for these populations.

Questionnaire Insights:

47% prioritized extremely low-income households, with an additional 37% prioritizing low-income households.

Questionnaire respondents do not respond to all questions. For these question, there were 125 respondents.

Prioritization of Population Served

#3: The residents of Flatbush should be prioritized for new affordable opportunities in the neighborhood

- Task Force members noted that CB 17, in particular, has a high percentage of households that are severely rent burdened.
- Workshop participants stated that future affordable housing to be developed on the site must prioritize the residents living across the neighborhood now (both CB 14 and CB 17).

Prioritization of Population Served

The Opportunity for Homeownership

- Workshop participants and Task Force members highlighted:
 - The importance to preserve and increase black co-operative homeownership and promote first-time homebuyers from the community.
 - Homeownership can foster stewardship for both the development and immediate neighborhood, encouraging those living there to maintain and care for the area.
- If the building could provide homeownership opportunities to lower-income populations, the community and Task Force would prioritize it over other types of housing.

Questionnaire Insights:

When asked about preference of homeownership and rentals, **63% preferred homeownership** as an opportunity at this site, versus 37% prioritizing rentals.

Questionnaire respondents do not respond to all questions. For these question, there were 102 respondents.

Prioritization of Population Served

Interest in Community Land Trust

- Workshop participants and Task Force members find a Community Land Trust to be a promising model for the site. It presents an opportunity for residents, neighbors, and community residents to determine land use.
- Many workshop participants expressed that when it comes to affordable housing development, this model may be the most respectful of the descendants, in that it fosters stewardship and communal ownership of the land and the uses on top of it.

Prioritization of Population Served

RECOMMENDATIONS:

1. Seniors should be prioritized for affordable housing.
2. Residents in the neighborhood living at the extremely low and very-low-income level should be prioritized for affordable housing.
3. The residents of Flatbush should be prioritized for new affordable housing opportunities in the neighborhood.

*Additional Context: The Opportunity for Homeownership.
Interest in a Community Land Trust.*

Guiding Questions for the Feedback:

- How well does this draft reflect what you heard?
- Is anything missing?
- Any questions or concerns?

Non-Residential Amenities

RECOMMENDATIONS:

1. The ground floor should focus on arts and cultural programming and opportunities for community use.
2. The ground floor should prioritize community-based programming over commercial services.

Additional Context: Leveraging the rich arts and culture of Flatbush

Non-Residential Amenities

#1: The ground floor should focus on arts and cultural programming and opportunities for community use

- Task Force members and workshop participants spoke of this neighborhood as one with a thriving and vibrant arts and cultural community, and as one where artists are often unsupported.
- Whether the ground floor becomes part of the memorial design, or through cultural programming tied to the memorialization, Task Force members felt it was important to use this space to encourage reflection, respite, and memory of those buried here.
- Community members stated how a museum erected on the site could honor and preserve the site's history.

Questionnaire Insights:

Arts and culture was a high priority in the questionnaire with **57%** indicating cultural programming as critical for the ground floor of this development.

Questionnaire respondents do not respond to all questions. For these question, there were 117 respondents.

Non-Residential Amenities

#2: The ground floor should prioritize community-based programming over commercial services

- Community members and Task Force members indicated that youth in particular lack access to adequate green space and recreation spaces.
- The community indicated that many residents must leave the neighborhood for work, and that support is necessary for residents to obtain employment opportunities, workforce development and job training in Flatbush.
- Senior services were also brought up by the community as a local need, as seniors make up a major demographic of the neighborhood.

Questionnaire Insights:

49% recreational space

34% workforce development and job training

25% access to childcare and daycare services

17% prioritized a senior center

Questionnaire respondents do not respond to all questions. For these question, there were 117 respondents.

Non-Residential Amenities

Leveraging the rich arts and culture in Flatbush

- Task Force members and workshop participants felt that leveraging the existing arts and culture resources and networks, the ground floor can become a space to celebrate the African and Caribbean cultures, and diversity of Flatbush.
- Workshop participants expressed:
 - Arts and cultural programs are needed.
 - Arts and culture should mirror the cultural identities and histories in the community.

Non-Residential Amenities

RECOMMENDATIONS:

1. The ground floor should focus on arts and cultural programming and opportunities for community use.
2. The ground floor should prioritize community-based programming over commercial services.

Additional Context: Leveraging the rich arts and culture of Flatbush

Guiding Questions for the Feedback:

- How well does this draft reflect what you heard?
- Is anything missing?
- Any questions or concerns?

Youth Programming and Youth Space

RECOMMENDATIONS:

1. Prioritize robust youth programming accompanied by a multi-use space.
2. Youth programming should prioritize all ages but have an emphasis on high school age children.
3. The Youth programming and space should leverage existing services and resources in the community.

Acknowledgement on missing the youth voice.

Only 6 respondents to the community questionnaire identified themselves as youth.

Throughout this process Task Force and community members articulate that much more youth outreach must be done.

Youth Programming and Youth Space

#1: Prioritize robust youth programming accompanied by a multi-use space

- Participants across engagement types expressed that youth need a space to gather and foster community - a multi-purpose space that can adapt for different audiences and needs.
- Task Force members and workshop participants wanted youth programming tied to memorialization and education of the site history.
- Workshops and questionnaire participants stressed there needs to be programming that bridges the gap between high school and career readiness.

Questionnaire Insights:

46% “**multi-generational programing**” as a top priorities for how the space could benefit the broader community.

42% “**arts and culture programs**” as their top choice of youth programming they would like to see in the neighborhood.

Questionnaire respondents do not respond to all questions. For these question, there were 115 respondents.

Youth Programming and Youth Space

#2: Youth programming should prioritize all ages but have an emphasis on high school age children

- Task Force members stressed the importance of providing a space for all ages, and to also focus heavily on older youth as they have the least amount of services available to them.
 - This priority was echoed in the community workshop and questionnaire.

Questionnaire respondents chose the following as their top three audiences for the youth space:

40% - High school (age 15-18)

42% - Youth of all ages (infant - age 24)

43% - Special needs or youth with disabilities

*Questionnaire respondents do not respond to all questions.
For these question, there were 115 respondents.*

Youth Programming and Youth Space

#3: The youth programming and space should leverage existing services and resources in the community

- Participants across engagement types expressed that the youth space (and programming) should be tied to vocational and job training that connect to the larger community.
- Participants in the community questionnaire and Task Force members suggest youth space should partner with cultural institutions in the neighborhood - specifically Afro-Caribbean organizations.
- Workshop participants and Task Force members expressed that the space and programming should prioritize a multi-generational and multi-use focus.

Questionnaire Insights:

42% respondents chose “mentorship programs” as their top choice of types of youth services/programming they would like to see in the neighborhood.

Questionnaire respondents do not respond to all questions. For these question, there were 115 respondents.

Youth Programming and Youth Space

RECOMMENDATIONS:

1. Prioritize robust youth programming accompanied by a multi-use space.
2. Youth programming should prioritize all ages but have an emphasis on high school age children.
3. The Youth programming and space should leverage existing services and resources in the community.

Guiding Questions for the Feedback:

- How well does this draft reflect what you heard?
- Is anything missing?
- Any questions or concerns?

Relationship between the Task Force, Community, Developer and City

RECOMMENDATIONS:

1. The Task Force should represent the Descendant Community, but in a different configuration.
2. The key role of the Task Force is to engage the public and hold the Developer and the City accountable to what the community wants.
3. Expand membership in the Task Force to include more perspectives.

Relationship between the Task Force, Community, Developer and City

#1: The Task Force should represent the Descendant Community, but in a different configuration

- Due to lack of identifiable biological kin, the Task Force agreed that they should play the role of safeguarding the legacy, honoring the vision and respecting the history of the site as the Descendant Community.
- Task Force members prefer the Descendent Community be represented by a sub-group of Task Force members that feel they have an ancestral connection with the formerly enslaved.

What is the Descendant Community?

The Descendant Community may comprise lineal descendants of those people buried at the burial ground and may also include people who self-identify as descendants, such as people whose ancestors were part of the African diaspora.

Relationship between the Task Force, Community, Developer and City

#2: The key role of the Task Force is to engage the public and hold the Developer and the City accountable to what the community wants

- Task Force members felt it is critical to engage the public (community) through more robust education awareness efforts, age specific activities, and celebration, to ensure increasingly inclusive participation.
- To make sure the future development partner is really listening to the community's needs and is transparent on process and decision-making, the Task Force wants to develop open and two-way communications with the future Developer and the City.
- Task Force members cautioned that the developer needs to be respectful that this is more than the building.

Relationship between the Task Force, Community, Developer and City

#3: To open up the Task Force to include more perspectives

- Many on the Task Force expressed that the membership needs to include different and diverse members of the community.
- The responsibility of the Task Force is to continually knowledgeable of the different organizations and perspectives within the community.

Relationship between the Task Force, Community, Developer and City

RECOMMENDATIONS:

1. The Task Force should represent the Descendant Community, but in a different configuration.
2. The key role of the Task Force is to engage the public and hold the Developer and the City accountable to what the community wants.
3. Expand membership in the Task Force to include more perspectives.

Guiding Questions for the Feedback:

- How well does this draft reflect what you heard?
- Is anything missing?
- Any questions or concerns?

Next Steps

Request for information from Task Force:

- Complete the **Acknowledgement Form** (which will be shared through email).

What Happens Next on Our End:

- Hosting the **Public Report Back Events**
 - Online event: Thursday, September 9th between 6-8p on Zoom.
 - In-person event: Saturday Sept 11th between 11a - 2p
East 32nd Street at the corner of Church Avenue.
- To use the feedback to finalize the **Community Visioning Report**.

Thank You!

