



PROJECT AREA 2 – Two Week Look Ahead

2/14/22 - 2/25/22

PROJECT#: SANDRESM2 | BOROUGH: MANHATTAN | DATE ISSUED: 2/11/21

The following is an anticipated work schedule for the upcoming week. **However, due to unforeseen field and weather conditions**, it may become necessary to change some scheduled work locations, operations, and dates.

Map Key	Date	Work Hours	Location	Operation
1	2/14/22–2/25/22	7:00 am to 3:30 pm	Stuyvesant Cove Park: E 20 Street to E 23 Street	Greenway closure continues Floodwall construction ongoing
2	2/14/22–2/25/22	7:00 am to 3:30 pm	E 23 Street at East Service Road and under the FDR Dr. Adjacent to BP Gas Station	* Modified Traffic Pattern at E. 23rd Street under the FDR Dr. ECS & ConEdison utility work ongoing Pile installation for the floodwall
3	2/14/22–2/25/22	7:00 am to 3:30 pm	West Service Rd between E 25 Street and E 23 Street	Floodwall concrete construction begins
4	2/14/22–2/25/22	7:00 am to 3:30 pm	Asser Levy Playground	Park reconstruction and Floodwall construction ongoing **Handball Court closure – to paint the rails and replace the fences.
5	2/14/22–2/25/22	7:00 am to 3:30 pm	E 15th Street between Ave C and FDR Dr. within Con Edison Facility	Sewer reconstruction/coordination for sub-surface investigation
6	2/14/22–2/25/22	7:00 am to 3:30 pm	E 18th Street Exit 7 Ramp FDR Dr. left lane at Avenue C	Modified Traffic Pattern at FDR Ramp continues Excavate and install Sewer structures

REMINDERS: *Modified Traffic Pattern detour at E 23rd Street under the FDR Dr. continues. **Handball Court closure continues

Utility work by ConEdison, ECS, etc. may extend work hours and/or occur on weekends to facilitate utility relocations, maintenance work or inspection services

For More Information: Contact **Nadine Harris** at (347) 572-3057, ESCRCCL2@ddccr.com, or via web inquiry: www.nyc.gov/escr/contact

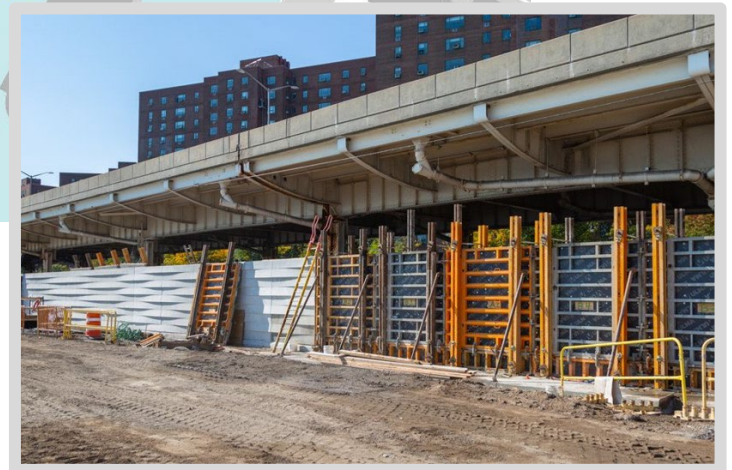
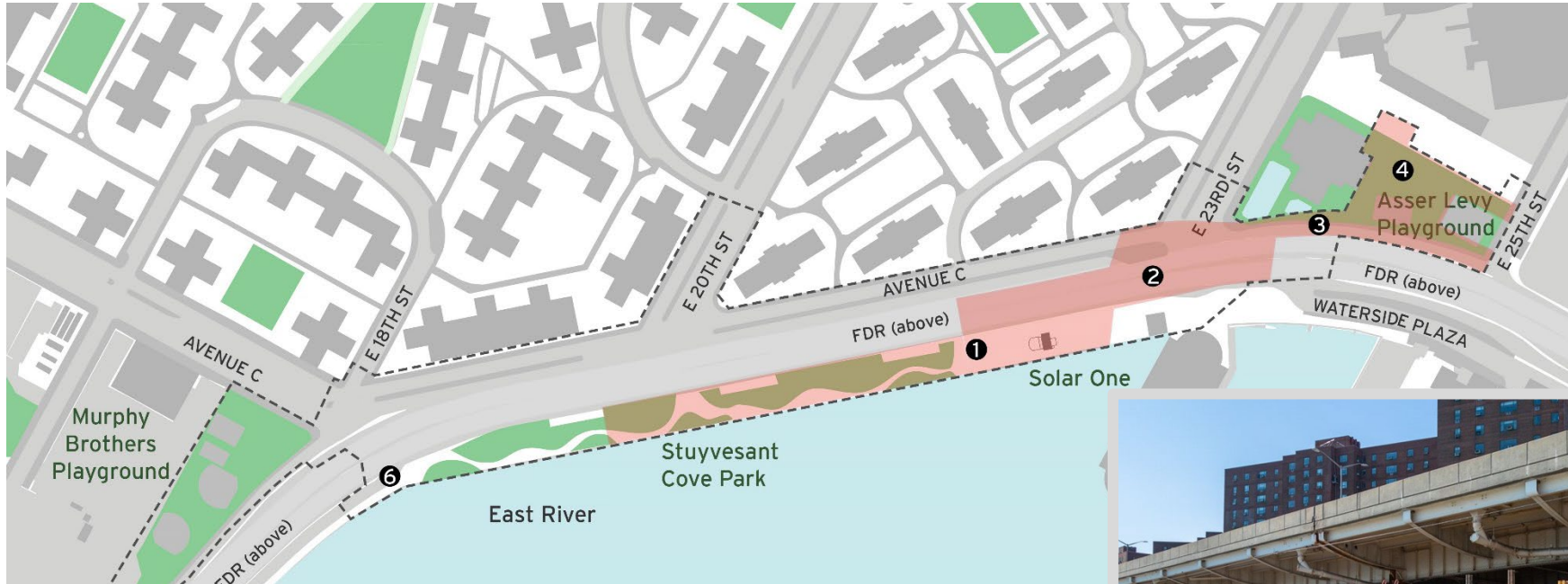
During non-construction hours, please contact the New York City Government Services and Information Hotline at **311**.

Construction Bulletin

East Side Coastal Resiliency
www.nyc.gov/escr



Numbers on the map below show the approximate location of the construction operations described on the first page. For more detailed information, see Advisories released for each detour/traffic pattern change posted on the website: www.nyc.gov/escr/notices



Operation 1:
Ongoing floodwall construction in Stuyvesant Cove Park.

For More Information: Contact **Nadine Harris** at (347) 572-3057, ESCRCL2@ddccr.com, or via web inquiry: www.nyc.gov/escr/contact
During non-construction hours, please contact the New York City Government Services and Information Hotline at **311**.