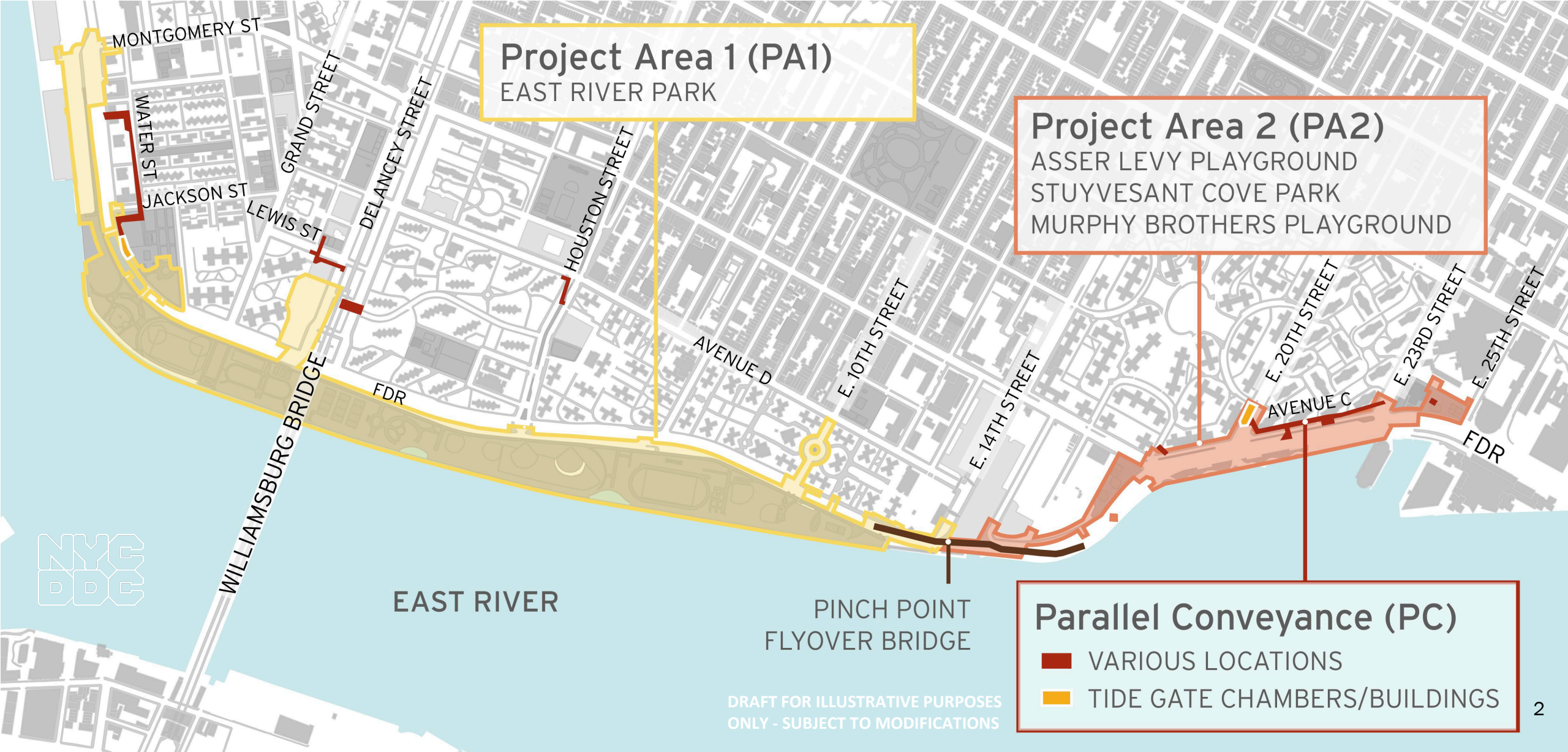


East Side Coastal Resiliency Parallel Conveyance Update

CB3 Parks Committee Meeting
Virtual Meeting | October 13, 2022

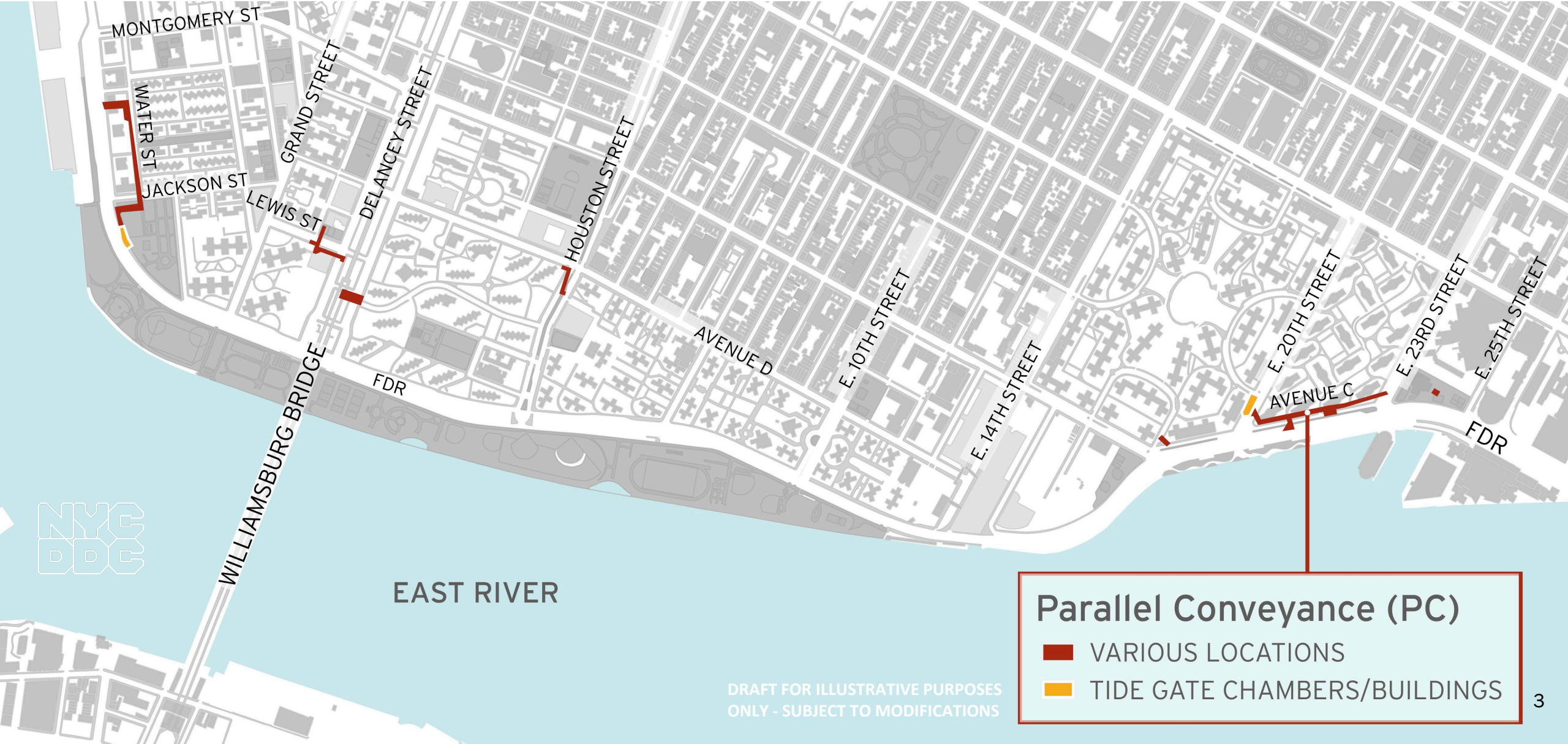


ESCR Project Area



DRAFT FOR ILLUSTRATIVE PURPOSES ONLY - SUBJECT TO MODIFICATIONS

Parallel Conveyance (PC) Project Area



EAST RIVER

DRAFT FOR ILLUSTRATIVE PURPOSES ONLY - SUBJECT TO MODIFICATIONS

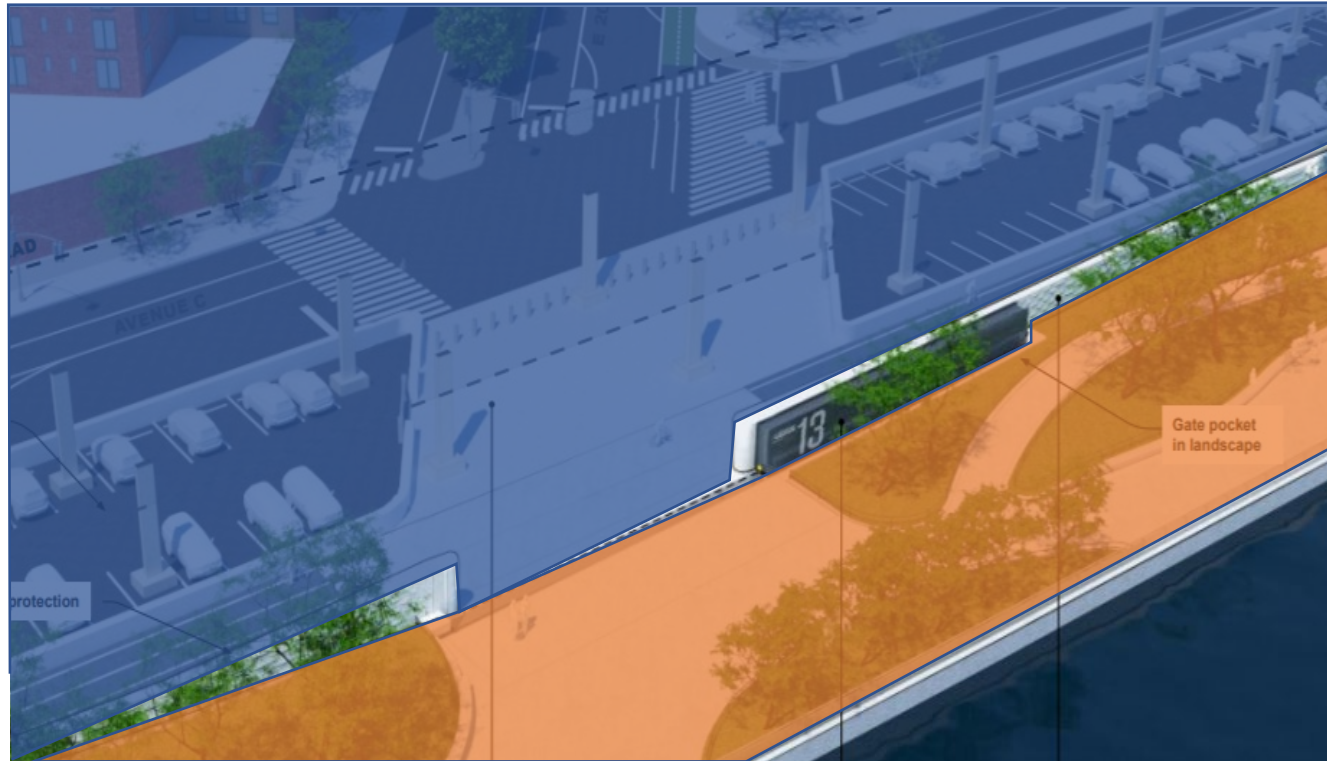
Project Overview | Parallel Conveyance (PC)

- REI Services: STV Incorporated
- Contractor awarded in May: NYCC JPL JV
- NTP issued **September 13, 2022**
- Construction start anticipated in winter 2022
- Contract duration is approximately 4 years

Project Overview | Parallel Conveyance (PC)

Optimizes the existing drainage infrastructure and stormwater system. The PC work consists of:

- **Sewer upgrade** work within the city streets
- Two **interceptor gates, two buildings**, and several deep manhole excavations
- Potential street and/or sidewalk closures, detours, and watermain shutoffs



PC

Sewer upgrades will help protect the community from floods that result from **heavy rainfall** during storm events

PA1
&
PA2

Flood protection system will help protect the community from **coastal/ tidal** flooding and saltwater

Typical Community Impacts

- Detours and lane closures
 - Vehicular travel lane closures, detours and new traffic patterns
 - Cyclists and pedestrian detours
 - Signage will be posted in advance within the affected areas. Traffic Enforcement Agents, crossing guards and flaggers will be present when necessary to assist vehicles and pedestrians.
- Public transportation will be maintained at all times including Ferry landings
- Emergency vehicle and pedestrian access to sidewalks will be maintained at all times unless otherwise notes and coordinated with emergency service providers
- Water Service Interruptions:
 - During the project there may be some service interruptions. To allow for water line replacement, existing water service must be temporarily shut off.
 - Advance notice will be provided before any service interruption. Water service will be restored at the end of each night.
- Environmental Monitoring
 - Air, noise, and vibration monitors will be active 24 hours/day, 7 days/week
 - Air monitoring summaries will be available on the ESCR Environmental Monitoring webpage, with verbal updates provided at Community Advisory Group Meetings
 - The project will follow all federal, state and local guidelines
 - The ESCR Environmental Fact Sheet can be found on the ESCR website:

<https://www1.nyc.gov/site/escr/project-updates/environmental-monitoring.page>

Community health and safety is of the utmost importance to the City of New York, the NYC Department of Design and Construction (NYC DDC), and the East Side Coastal Resiliency (ESCR) team. The ESCR project is committed to providing the community with quarterly air quality monitoring summaries throughout construction.

The screenshot displays the 'Environmental Monitoring' section of the East Side Coastal Resiliency Project website. It includes a navigation menu with 'Project Updates', 'Community Engagement', and 'Contact'. The main content area is titled 'Air Quality' and features a sidebar with links for 'PA1 Construction Notices', 'PA2 Construction Notices', 'Environmental Monitoring', 'Presentations', 'Newsletters', and 'Gallery'. The main text explains the importance of air quality monitoring and lists four key components: 1. Air Quality Management Plan, 2. Daily Air Quality Mitigation Techniques, 3. Daily Air Quality Monitoring, and 4. Air Quality oversight by environmental specialists. It also provides links to download monitoring reports for 2022 and 2021 for both PA1 and PA2 areas.

Below the website screenshot is a fact sheet titled 'Air Quality Monitoring' from the East Side Coastal Resiliency project. It outlines two main goals: 1. 'We are constantly monitoring the air quality around our construction activities.' and 2. 'We are taking steps to control dust and limit emissions during construction.' The fact sheet includes a diagram of air monitoring stations (Monitor A and Monitor B) and a list of measures to reduce construction vehicle pollution and emissions, such as using Ultra-Low Sulfur Diesel fuel and minimizing diesel engine use. It also features a 'DID YOU KNOW?' box stating that one barge has the capacity to divert up to 57 trucks from local roads.



Meet Your PC Community Construction Liaison (CCL)

Tannia Wokoun is a CCL who has represented the New York City Department of Design and Construction (NYCDDC) for the past four (4) years. She was instrumental in the completion of an infrastructure watermain project in the Washington Height area of Manhattan. Prior to her time with NYCDDC she worked for the NYSDOT on the rehabilitation of the Major Deegan Expressway Viaduct in the Bronx. Tannia has a background in hospitality and is fluent in English and Spanish.

In the words of her Costa Rican heritage, she wishes everyone “*Pura Vida*”, a Pure and Healthy Life.

Parallel Conveyance (PC) Resources

1. [About](#): general overview of all 3 projects including Fact Sheets
2. [Project Elements](#): PDC Presentations which show renderings of the Interceptor Gate Buildings (PDC Final: pages 15-19, pages 90-92) and under Resiliency and Flood Protection -> Combined Sewer System speaks to how PC works.
3. [Project Updates](#): PC Construction Notices directory link will be added to the left menu here for Bulletins and Advisories like PA1 and PA2
4. [Presentations](#):
 - a. Scroll down to Friday April 29, 2022, for Parallel Conveyance Discussion with DDC & DEP – you can see slides and live recording
 - b. [2019 Design Archive](#): scroll down to the June Open Houses for the presentation boards and the Animation of Floodgates and Drainage which includes an animation of how PC will work.
5. [CAG Page](#):
 - a. Scroll down to CAG Virtual Meeting #13 and then #14 for presentation and live recording
 - b. [CAG Inquiry Responses](#): see 1/20/22 Response on PC

East Side Coastal Resiliency
www.nyc.gov/escr
August 2022

Parallel Conveyance

Project Area 1 (PA1)
EAST RIVER PARK

Project Area 2 (PA2)
ASSER LEVY PLAYGROUND
STUYVESANT COVE PARK
MURPHY BROTHERS PLAYGROUND

Parallel Conveyance (PC)
VARIOUS LOCATIONS
TIDE GATE CHAMBERS/BUILDINGS

The East Side Coastal Resiliency (ESCR) project is a coastal protection initiative, jointly funded by the City of New York and the federal government, aimed at reducing flood risk due to coastal storms and sea level rise on Manhattan's East Side. The ESCR project will protect 110,000 New Yorkers from the impacts of climate change by reducing flood risk to communities, properties, businesses, critical infrastructure, and public open spaces. In addition to providing flood protection, the project will strengthen and enhance waterfront spaces by improving accessibility, increasing ecological diversity, and delivering improved recreational amenities to a vibrant and highly diverse community.

Parallel Conveyance Overview

Location
From Montgomery Street to East 25th Street, Borough of Manhattan (see map above)

Construction Management
New York City Department of Design and Construction (NYCDDC)
Thomas Foley, P.E., Commissioner

Sponsor Agency
New York City Department of Environmental Protection (NYCDEP)
Rohit T. Aggarwala, Commissioner

Design Consultant: AKRF-KSE JV

Program Management & Construction Management (PMCM): STV

Contractor: NYCC-JPL JV

Scope of Work

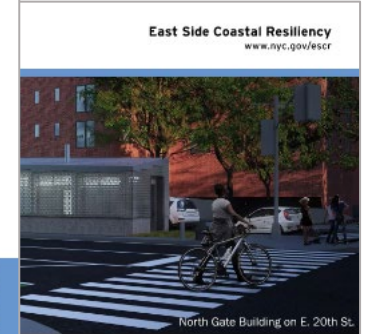
- Sewer Work: increase capacity of the sewer system to provide interior flood protection
- Combined Sewer Overflow (CSO) & utility work improvements
- Interceptor Gates: install two interceptor gate systems
- Gate Houses: construct two interceptor gate buildings
- Improve street lighting and traffic signals within the work zone

The overall ESCR project budget is \$1.4 Billion with substantial completion by 2026. The three contracts included within ESCR are below:

Project ID	Budget	Substantial Completion
SANDRESM1	\$1.27 B	2026
SANDRESM2	\$163 M	2024
SANDRESPC	\$155 M	2026

Questions? Preguntas? 问题?
Please contact **ESCR Community Engagement Team** for project related inquiries or concerns:
www.nyc.gov/escr/contact
Visit the **ESCR Website & Project Updates**
[Sign up](#) to receive project updates and ESCR News.

DDC Department of Design and Construction | **NYC** | **NYC** Department of Transportation | **NYC** Department of Environmental Protection



- These new connections will convey excess combined sewer flows to the interceptor which leads to the Manhattan Pump Station.
- To protect the interceptor from inundation from outside the drainage area from flows to the north and south. The gates will be open under non-storm conditions and will be closed in advance of a forecasted storm event to cut off outside flows.
- Two new gate house buildings with mechanical equipment will be built at the northern and southern ends of the PC project to manage the operation of the gates.



Work With Us

EAST SIDE
COASTAL
RESILIENCY

ESCR Quarterly Information Session: In-Person Career Pathways Event

October 19, 2022, 4:30pm – 6:30pm
Thompkins Square Library

Join the ESCR Team In-Person to Explore Career Pathways in the construction industry. Speak with industry experts who will:

- Share career resources and information
- Provide information on training opportunities
- Inspire you to pursue a path in the construction industry
- Talk about their personal pathway

Share your resume and experiences that can lead to advancing your career. **In partnership with:** NYC DDC ODIR, NYC SBS, ESCR Contractors IPC and PCC, LESEN and Henry Street Settlement.

REGISTER NOW!!



The 28th Annual 2022 Competitive Edge Conference

October 31, 2022, 9am – 3pm
Pier 60 Chelsea Piers, NY

The must-attend event for MWLBE | DBE | SDVOB | Prime Contractors Since 1993, the Competitive Edge Conference has linked the region's small businesses, including MWLBES and Locally Based Enterprises, with leading decision-makers across industries.



EAST SIDE COASTAL RESILIENCY

**Join the ESCR Team In-Person
to Explore Career Pathways
in the construction industry**

Wednesday October 19 4:30 - 6:30pm

Speak with industry experts who will:

- **Share** career resources and information
- **Provide** information on training opportunities
- **Inspire you** to pursue a path in the construction industry
- **Talk** about their personal pathway

Share your resume and experiences that can lead to advancing your career

Location:
Tompkins Square Library
331 E 10th St,
New York, NY 10009

In partnership with:
NYC DDC ODIR,
Henry Street Settlement,
LESEN, NYC SBS, IPC, PCC

Pre-register for this event at
www.nyc.gov/escr/work

NYC Department of Design and Construction Office of Community Outreach & Notification NYC NEW YORK CITY DOT NYC

Work With Us

Careers & Procurement

The ESCR project team is committed to working with M/WBE and Section 3 firms. As we onboard our contractors, we continue to assess workforce needs.

Current Job and Contracting Opportunities

- 001 - Printing Shop/Print Services (HNTB-LiRo)
- 003 - Senior Inspector (HNTB-LiRo)
- 004 - Inspector II (HNTB-LiRo)
- 005 - Office Engineer (HNTB-LiRo)
- 006 - Assistant Office Engineer (HNTB-LiRo)
- 009 - Administrative Assistant (IPC)
- 010 - Payroll Specialist (IPC)

View [job descriptions](#) and apply through our [online portal](#).

Visit the New York City Department of Design and Construction's (NYCDDC's) procurement site for other opportunities related to the ESCR project as they are made available.

- [Find careers with NYCDDC](#)
- [Work with DDC](#)

<https://www1.nyc.gov/site/escr/contact/work-with-us.page>

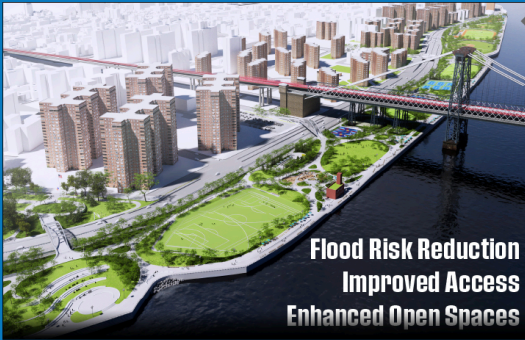
Have a Question on Hiring?

https://pima.ddccr.com/public/comment/project-comment-dynamic?project_id=14047&pe_id=2565

NYC East Side Coastal Resiliency 311 Search all NYC.gov websites

NYC The East Side Coastal Resiliency Project 简体中文 Translate Text-Size

Home About Project Updates Community Engagement Contact Search



**Flood Risk Reduction
Improved Access
Enhanced Open Spaces**

LEARN MORE
Construction on the East Side Coastal Resiliency project will begin in Fall 2020. Learn more about where construction will occur and how to receive updates throughout the project.

East Side Coastal Resiliency

The East Side Coastal Resiliency (ESCR) Project is a coastal protection initiative, jointly funded by the City of New York and the federal government, aimed at reducing flood risk due to coastal storms and sea level rise on Manhattan's East Side from East 25th Street to Montgomery Street. The boundaries of this project correspond with the natural "pinch-points" in the 100-year floodplain: areas where the land is higher along the coastline, making it easier to close the system off from water entering from the north and south. The project design integrates flood protection into the community fabric, improving waterfront open spaces and access, rather than walling off the neighborhood. Construction on the East Side Coastal Resiliency project will begin in Fall 2020 and continue through 2025.

<p>Construction Progress</p>	<p>Resiliency & Flood Protection</p>	<p>Project Background & Goals</p>	<p>Project Design</p>
<p>Construction Notices View our most recent community presentations for updates as we prepare for upcoming construction activities.</p>	<p>Resiliency and Flood Protection Learn more about ESCR's resiliency and the forward-thinking flood protection measures being implemented to protect 110,000 New Yorkers from the impacts of climate change.</p>	<p>Project Background and Goals Read about the history and background of ESCR, and the goals driving this technically complex infrastructure project.</p>	<p>Project Design From flood protection measures to bike lanes and ball fields, the ESCR project is improving open spaces and access in the Lower East Side while strengthening the city's coastline.</p>

Are you looking for more information?

Visit Us at:
www.nyc.gov/escr

