

East Side Coastal Resiliency Construction Update

CB6 Land Use Committee Meeting

Virtual Meeting

February 28, 2022



Mayor's Office of
Resiliency

HIGHLIGHTS

- MWBE Update
- Overview of Project & Contracts
- Project Area 2 Construction Progress, Photos & Design Renderings
- Project Area 1 Upcoming Construction Activities
- What We've Heard

HIRING VIRTUAL RESOURCES EVENT

ESCR Winter Virtual Information Session & Resource Fair

- ~30 attendees
- 1/3 from local zip codes

Many thanks to:

- Councilmember Carlina Rivera
- NYC Department of Design and Construction Office of Diversity and Industry Relations (NYCDDC ODIR)
- General Contractors (GCs)
- The Program and Construction Management Team (PMCM)
- NYC Department of Small Business Services (SBS), Workforce1
- Lower East Side Employment Network (LESEN)

Smaller Breakout Sessions included:

- Strategies for Successful Employment + Upcoming Opportunities
- Apprenticeship Opportunities in Construction
- Training Opportunities
- View presentation here:
https://www1.nyc.gov/assets/escr/downloads/pdf/20220216_ESCR_Winter_Info_Session_and_Resource_Fair_Presentation.pdf

Work With Us

EAST SIDE COASTAL RESILIENCY

ESCR Winter Virtual Information Session & Resource Fair

**Wednesday, February 16, 2022
4:00pm-7:00pm**

The East Side Coastal Resiliency (ESCR) project is a coastal protection initiative, jointly funded by the City of New York and the federal government, aimed at reducing flood risk due to coastal storms and sea level rise on Manhattan's East Side from East 25th Street to Montgomery Street.

Learn about the project, training, hiring and subcontracting opportunities related to the ESCR Project from the project team and local career support leaders.

During the first portion of the event, learn about programs and resources from:


- NYC Department of Design and Construction, Office of Diversity & Industry Relations (NYCDDC ODIR)
- Program and Construction Management Team (PMCM)
- General Contractors (GM)
- NYC Department of Small Business Services (SBS)
- Lower East Side Employment Network (LESEN)

Then engage with local career support leaders and industry representatives in the second portion of the event. Pre-register for the **breakout sessions** which interest you most:

- Strategies for Successful Employment + Upcoming Opportunities
- Apprenticeship Opportunities in Construction
- Training Opportunities

Pre-register for this event and be the first to sign up for our breakout session conversations.
<https://bit.ly/ESCRInfoSession>

To learn more about working with the East Side Coastal Resiliency (ESCR) team, and the event please visit:
<https://www1.nyc.gov/site/escr/contact/work-with-us.page>



East Side Coastal Resiliency
www.nyc.gov/escr

NYC Department of Design and Construction
Office of Community Outreach & Participation

NYC Mayor's Office of Resiliency

NYC DOT
NEW YORK CITY

NYC Environmental Protection

NYC Parks

HIRING VIRTUAL RESOURCES EVENT

ESCR Winter Virtual Information Session & Resource Fair Resources:

EMPLOYMENT AND CONTRACTING OPPORTUNITIES

For individuals seeking Career Opportunities

- ESCR Work With Us Website: <https://www1.nyc.gov/site/escr/contact/work-with-us.page>
- Career Discovery NYC: <https://careerdiscovery.cityofnewyork.us/>

For M/WBE's exploring possible capacity building opportunities.

- DDC Mentor Program: <https://www1.nyc.gov/site/ddc/mwbe/mentoring-program.page>
- City Contracting Opportunities: <https://www1.nyc.gov/site/sbs/businesses/contracting-opportunities.page>

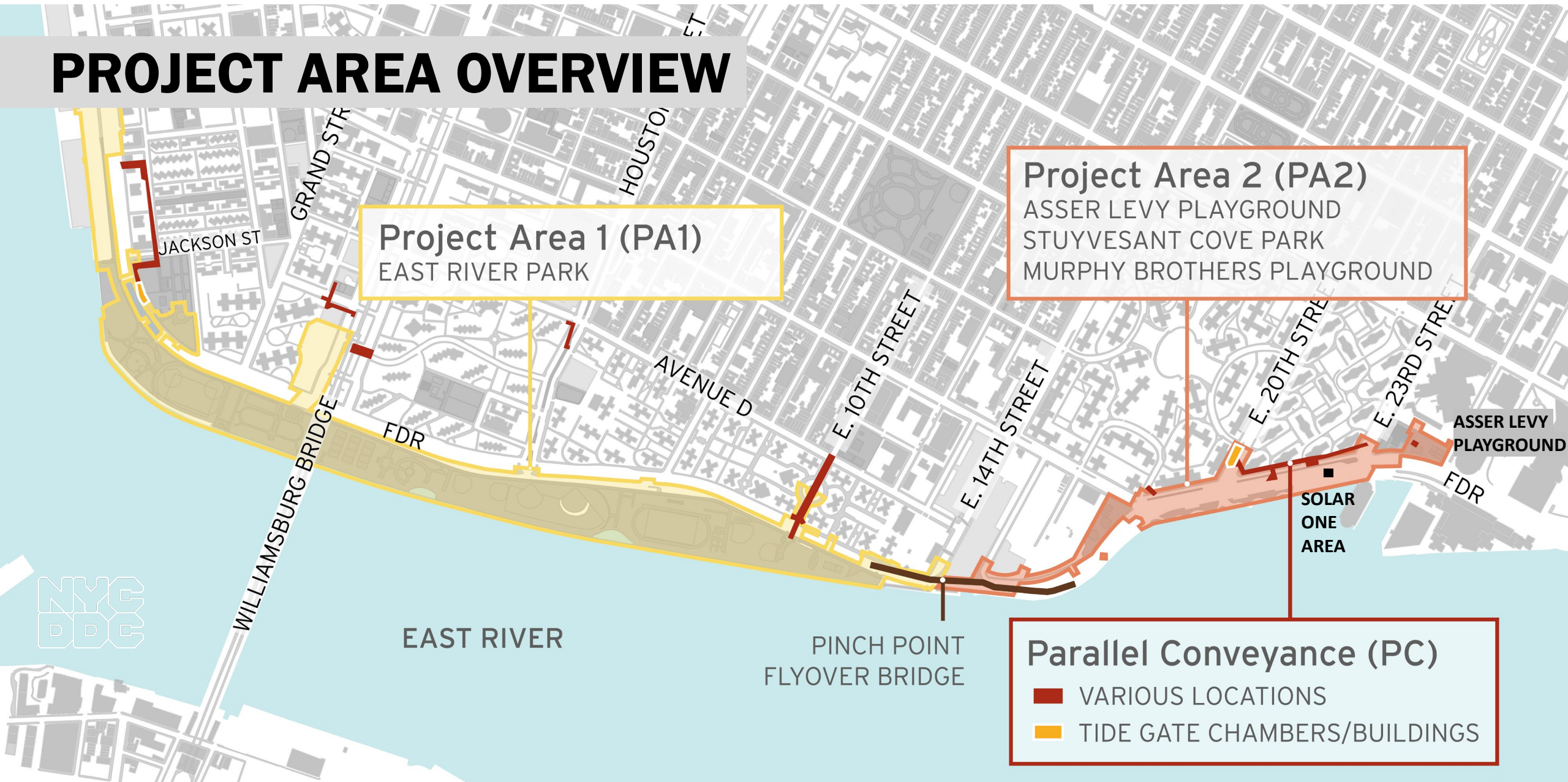
M/WBE and Section 3 Business Resources

- Get Certified as MWBE Business: <https://www1.nyc.gov/site/sbs/businesses/certify-with-the-city.page>
- Register as a Section 3 Business Entity: <https://www1.nyc.gov/site/nycha/business/section3-business-concern-information.page>
- Contract Financing Loan Fund: <https://www1.nyc.gov/nycbusiness/article/contract-financing-loan-fund>

TRAINING OPPORTUNITIES

- Career Discovery NYC Pre-Apprenticeship: <https://careerdiscovery.cityofnewyork.us/train/construction-worker/>
- Construction Site Safety Training: <https://careerdiscovery.cityofnewyork.us/discover/construction-worker/>
- Lower East Side Employment Network (LESEN): <https://www.lesemploy.org/p/what-we-do.html>
- Good Old Lower East Side (GOLES): <https://www.goles.org>

PROJECT AREA OVERVIEW



OVERVIEW OF CONTRACTS

Project Area 1 (PA1)

- Notice to Proceed (NTP) issued to contractor August 16, 2021
- partial park closure south of Stanton Street & Greenway closure

Project Area 2 (PA2)

- in construction on phase 2
 - Asser Levy Playground, Stuyvesant Cove Park at E 20th Street north to Solar One Area
 - over 650 ft of floodwall installed

Parallel Conveyance (PC)

- bid advertised on 11/12/21
- bid opened 2/10/2022
- preliminary results can be viewed here:
<https://www1.nyc.gov/site/ddc/contracts/Preliminary-Bid-Results.page>

PROJECT AREA 2

PA2 | CONSTRUCTION PROGRESS

ALL WORK IS SUBJECT TO CHANGE

1. Stuyvesant Cove Park north of 20th St.:

- floodwall construction
- flood gate installation

2. E 23rd St. Intersection:

- utility work & pile installation

3. West Service Road:

- pile installation & floodwall foundation

4. Asser Levy Playground:

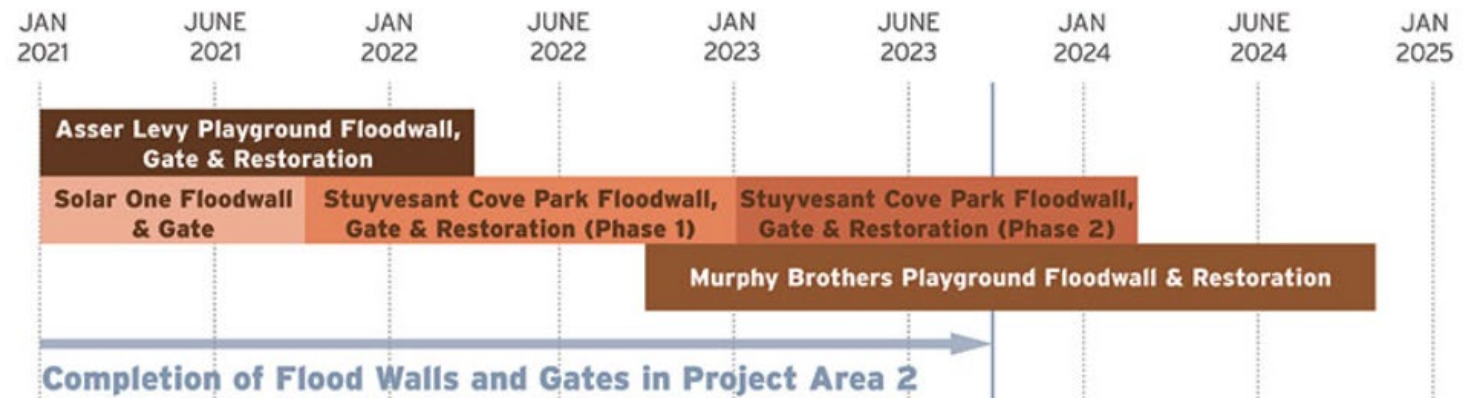
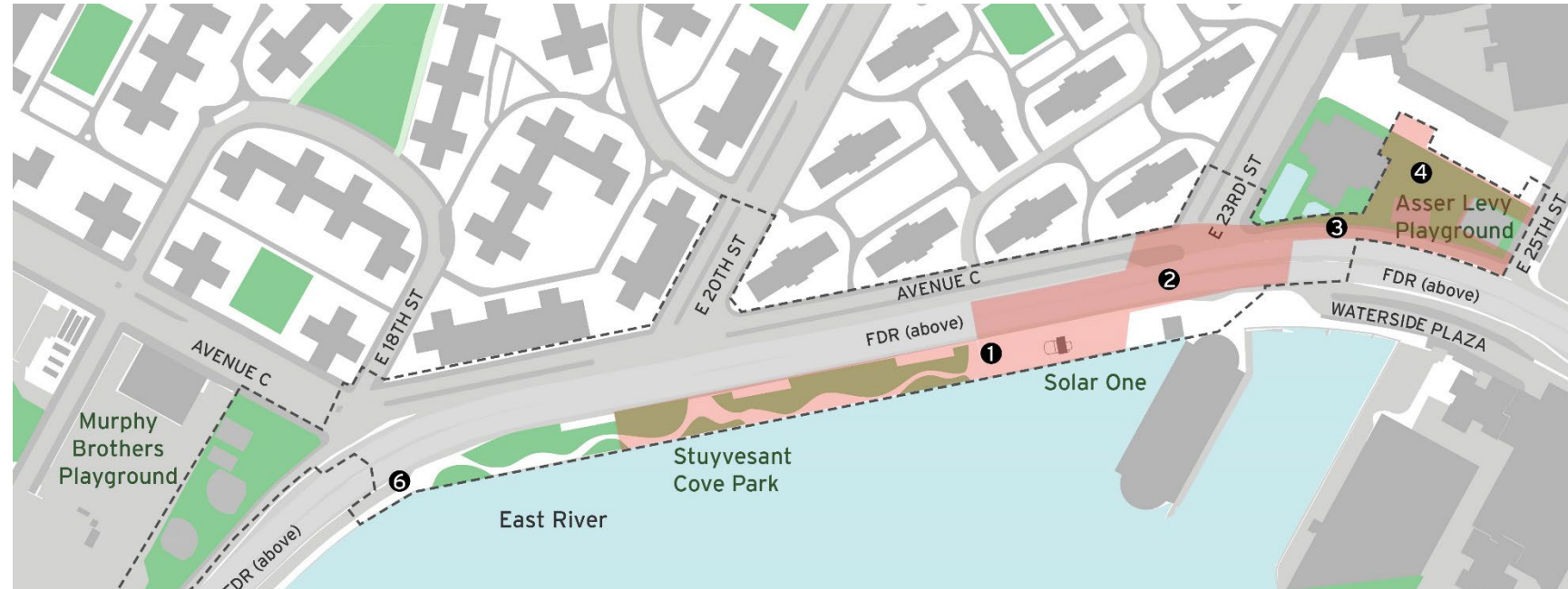
- floodwall foundation & park reconstruction
- handball court will reopen this week

5. E 15th Street between Ave C and FDR Dr. within Con Edison Facility

- sewer reconstruction/coordination for sub-surface investigation

6. FDR Dr. NB exit 7 ramp:

- excavate & install sewer structures



PA2 | CONSTRUCTION PHOTOS



Asser Levy Playground handball court reconstruction

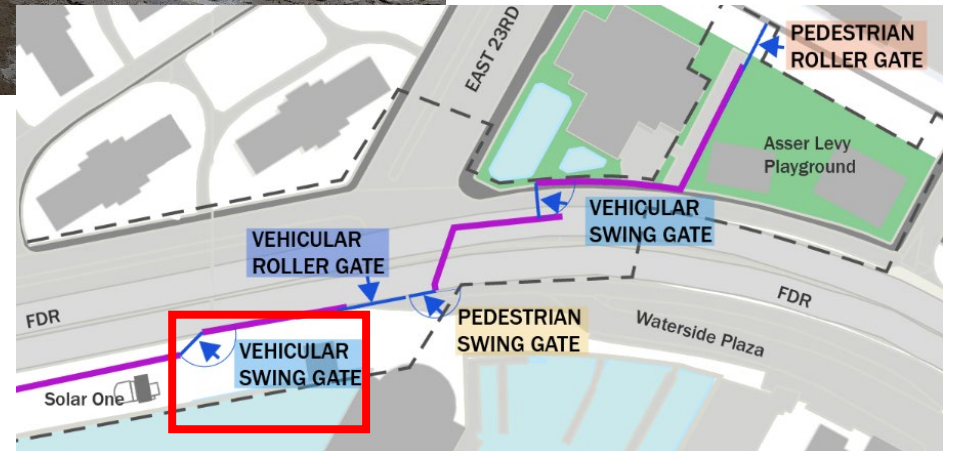


Stuyvesant Cove Park floodwall (looking north)

PA2 | CONSTRUCTION PHOTOS



Stuyvesant Cove Park Vehicular Swing Gate install 2/24/2022



PA2 | RENDERINGS

- PDC Final Design Link:

<https://www1.nyc.gov/assets/escr/downloads/pdf/DDC-f-ESCR-pres-rev-final-given-to-PDC-2020-01-30.pdf>

- PA2 design begins on page: 78
- PA2 planting Ppalette begins on page: 160

- PDC Preliminary Design Link:

<https://www1.nyc.gov/assets/escr/downloads/pdf/DDC-f-ESCR-pres-rev-final-given-to-PDC-2020-01-30.pdf>

- PA2 design begins on page: 87

PA2 | RENDERINGS



Asser Levy Playground

PA2 | RENDERINGS



Asser Levy Playground – Basketball Court

PA2 | RENDERINGS



Stuyvesant Cove Park

PA2 | RENDERINGS



Stuyvesant Cove Park – E. 20th Street entrance

PA2 | RENDERINGS



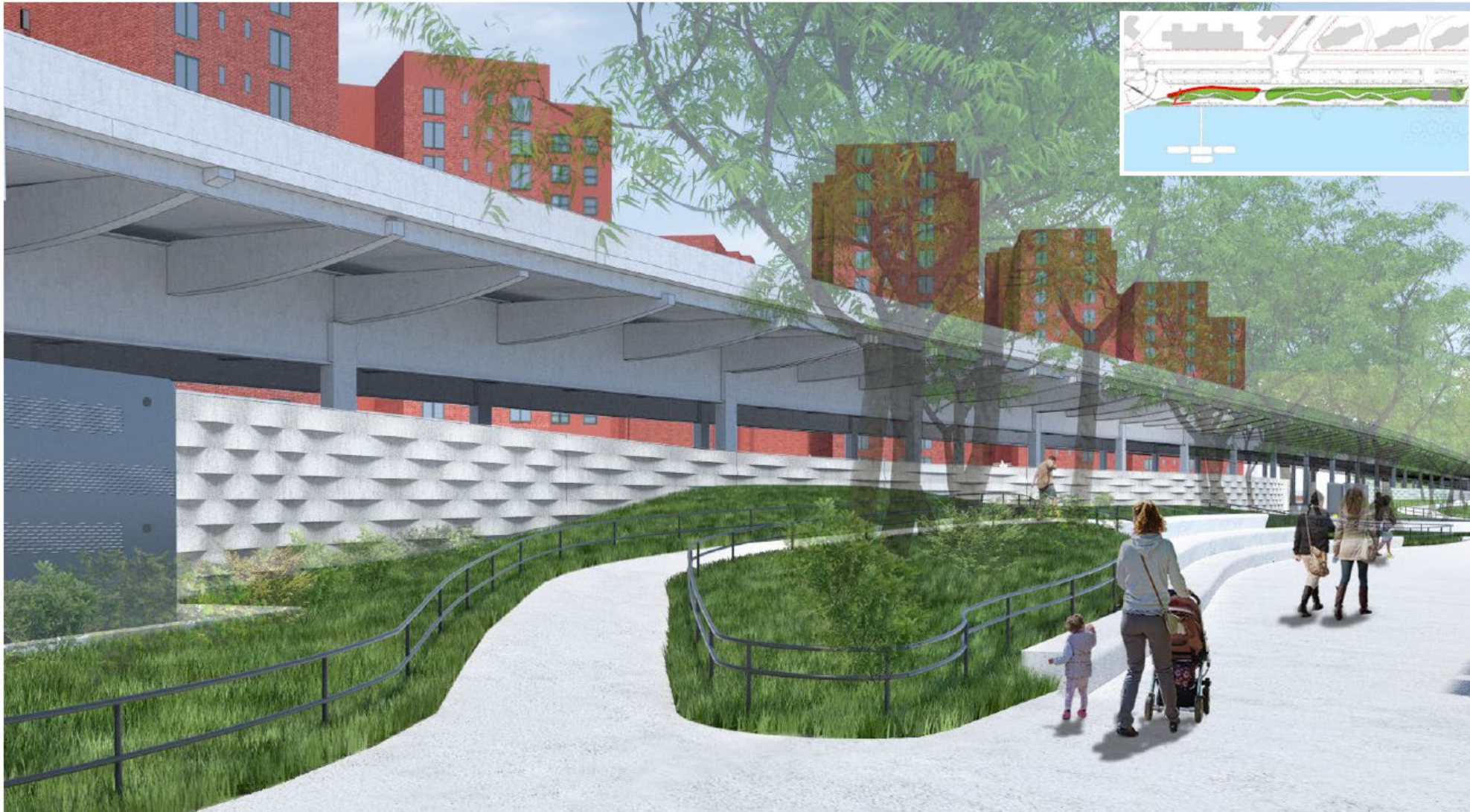
Stuyvesant Cove Park – Greenway

PA2 | RENDERINGS



Stuyvesant Cove Park – E. 20th Street Entrance inside park

PA2 | RENDERINGS

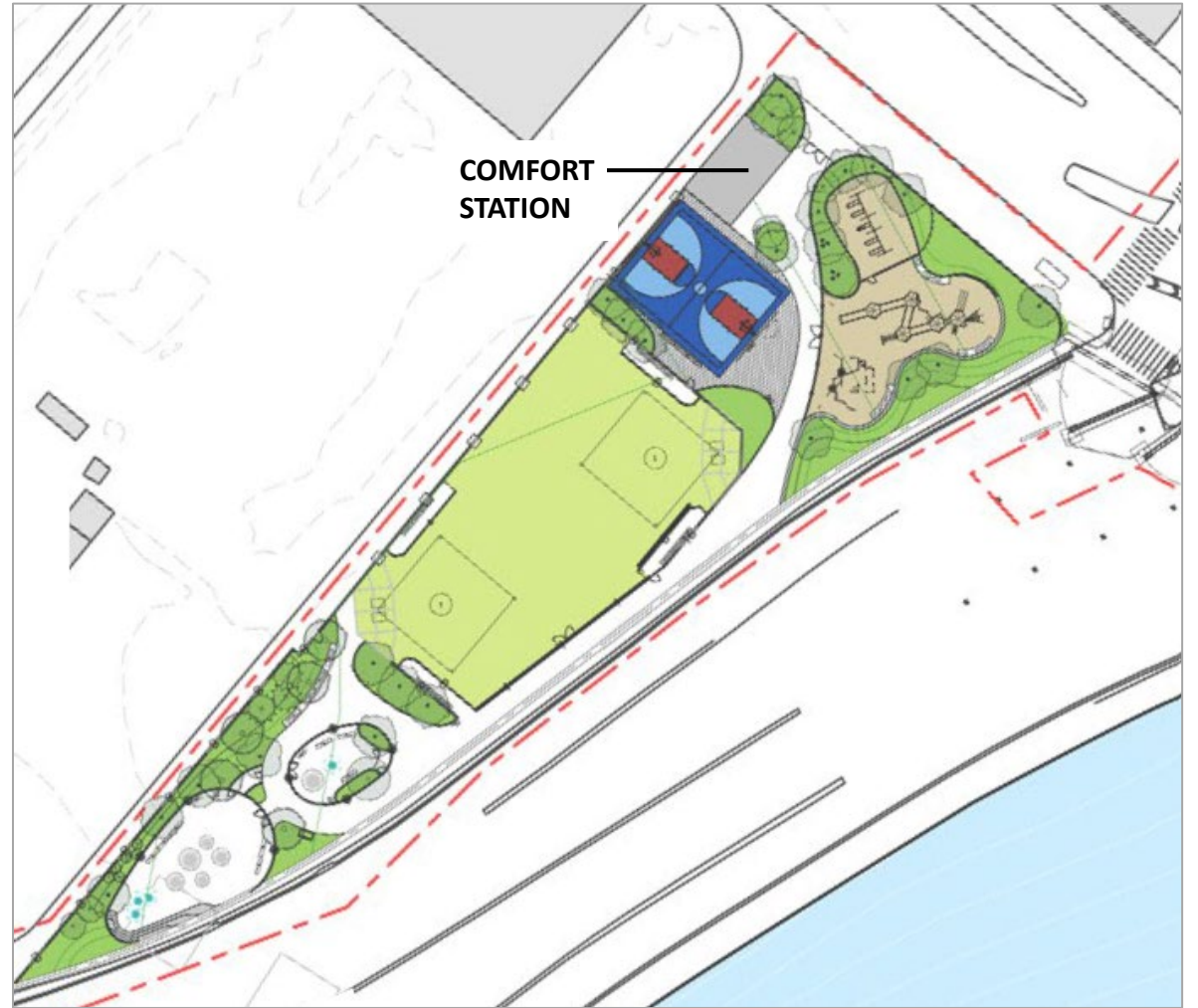


Stuyvesant Cove Park – between E. 18th Street and E. 20th Street entrances

PA2 | RENDERINGS

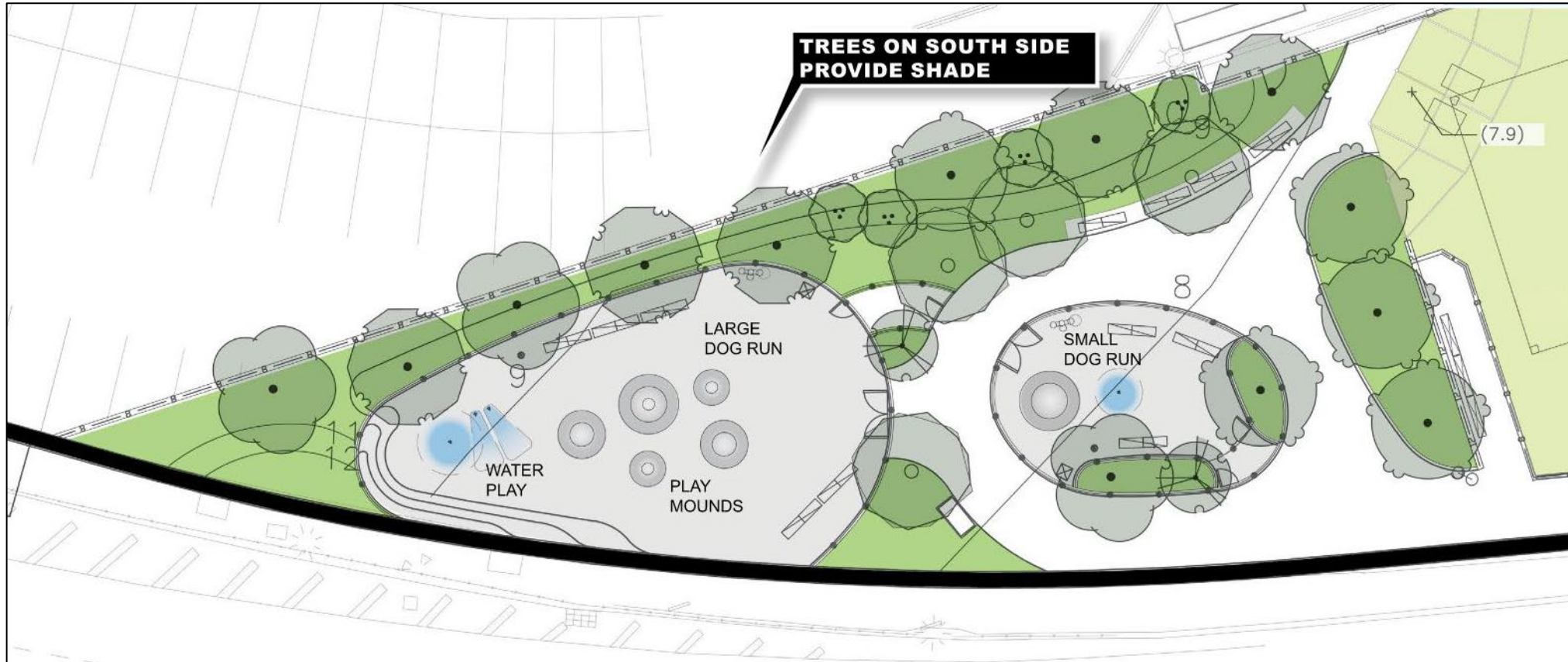


Murphy Brothers Playground Preliminary Design Rendering



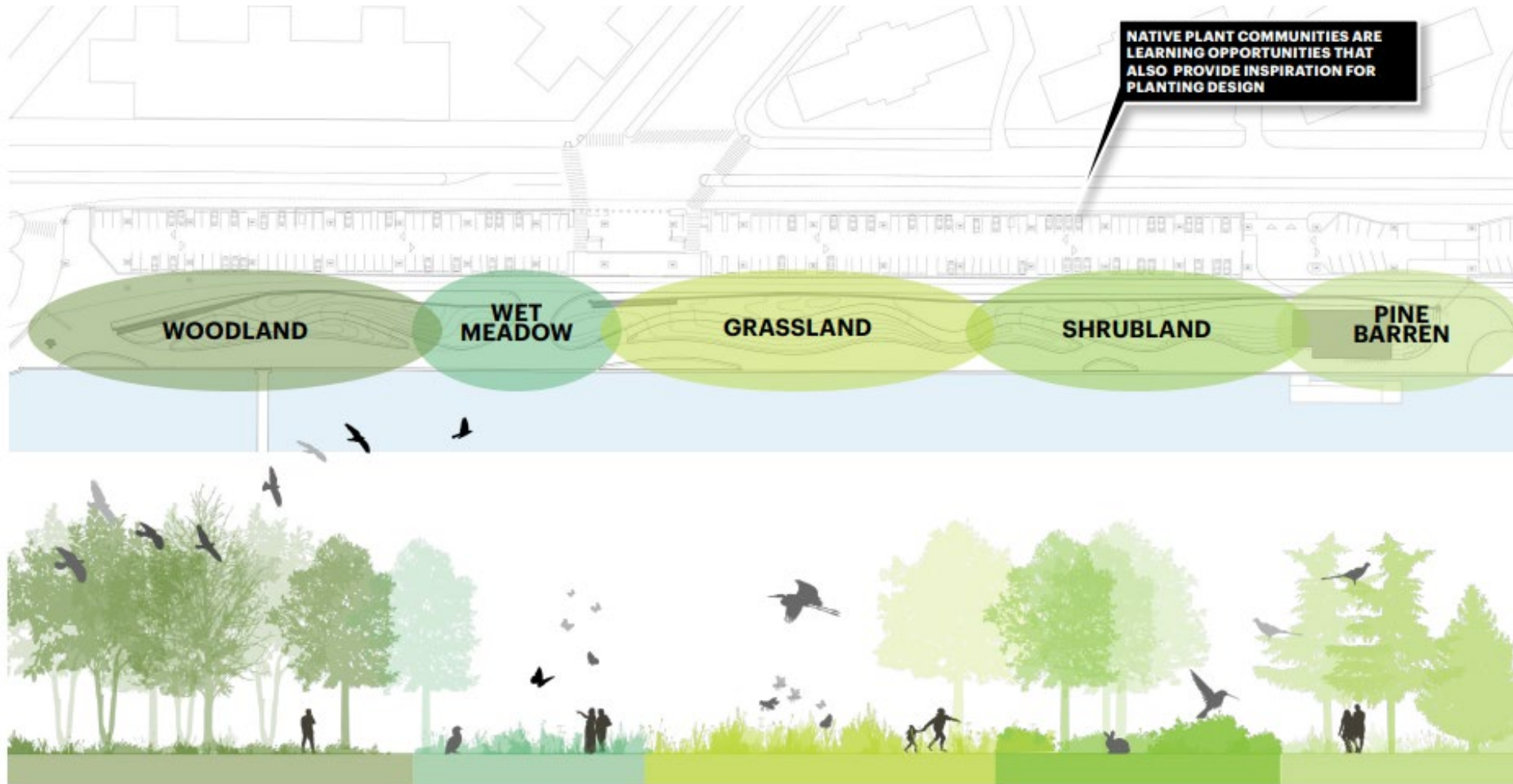
Murphy Brothers Playground Final Design Plan

PA2 | RENDERINGS



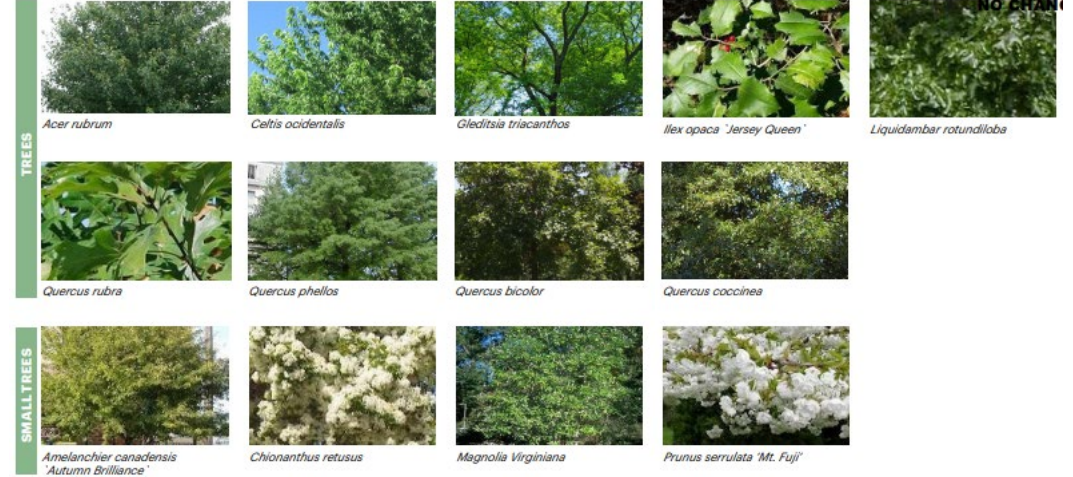
Murphy Brothers Playground Dog Run

PA2 | PLANTING PALETTE



Stuyvesant Cove Park

PA2 | PLANTING PALETTE



ESCR WEBSITE | ENVIRONMENTAL MONITORING

The screenshot shows the NYC ESCR website's 'Environmental Monitoring' page. The header includes the NYC logo, 'The East Side Coastal Resiliency Project', and navigation links for 'About', 'Project Updates', 'Community Engagement', and 'Contact'. A search bar is also present. The main heading is 'Environmental Monitoring'. On the left, there are links for 'PA1 Construction Notices', 'PA2 Construction Notices', 'Environmental Monitoring', 'Presentations', 'Newsletters', and 'Gallery'. The main content area features a paragraph about the importance of community health and safety, followed by a list of four air quality management measures: 1. Air Quality Management Plan, 2. Daily Air Quality Mitigation Techniques, 3. Daily Air Quality Monitoring, and 4. Air Quality oversight by environmental specialists. Below this, it states that monitoring reports currently focus on Project Area 2 and will expand to include Project Area 1 and Parallel Conveyance. A list of three reports is provided: 'Download First Half 2021 Air Quality Monitoring Report', 'Download Original Report issued July 1, 2021', and 'Download Second Half 2021 Air Quality Monitoring Report'. A red box highlights the 'Download 2021 CAG Air Monitoring Summaries' link and the text 'The ESCR project team provides monthly Air Quality updates at the CAG meetings. The slides have been combined here.' Another red box highlights the 'Download 2021 CAG Air Monitoring Summaries' link and the text 'For a quick overview of Air Quality Monitoring for the East Side Coastal Resiliency Project, see the ESCR Air Monitoring factsheet.' A blue button labeled 'Air Monitoring Factsheet' is also visible.

- Quarterly Monitoring Report
- CAG Monitoring Summaries
- CAG Monitoring Factsheet

The screenshot shows the 'Air Quality Monitoring' factsheet. It features a header with the NYC ESCR logo and the title 'Air Quality Monitoring'. The main content is organized into three numbered sections: 1. 'We are constantly monitoring the air quality around our construction activities.', 2. 'We are taking steps to control dust and limit emissions during construction.', and 3. 'We are guided by federal air quality standards.' Section 1 includes a diagram of air monitoring stations (Monitor A for upwind, Monitor B for downwind) and a 'NET PARTICULATE MATTER' section. Section 2 lists steps to reduce construction vehicle pollution and emissions, such as using barging for large deliveries and restricting truck idling time. Section 3 discusses the 15-min TWA intervals and the role of the ESCR team and Environmental Specialists. The factsheet also includes a 'Questions?' section with a QR code and contact information. At the bottom, there are logos for the Department of Design and Construction, NYC, and the Department of Environmental Protection.

PROJECT AREA 1

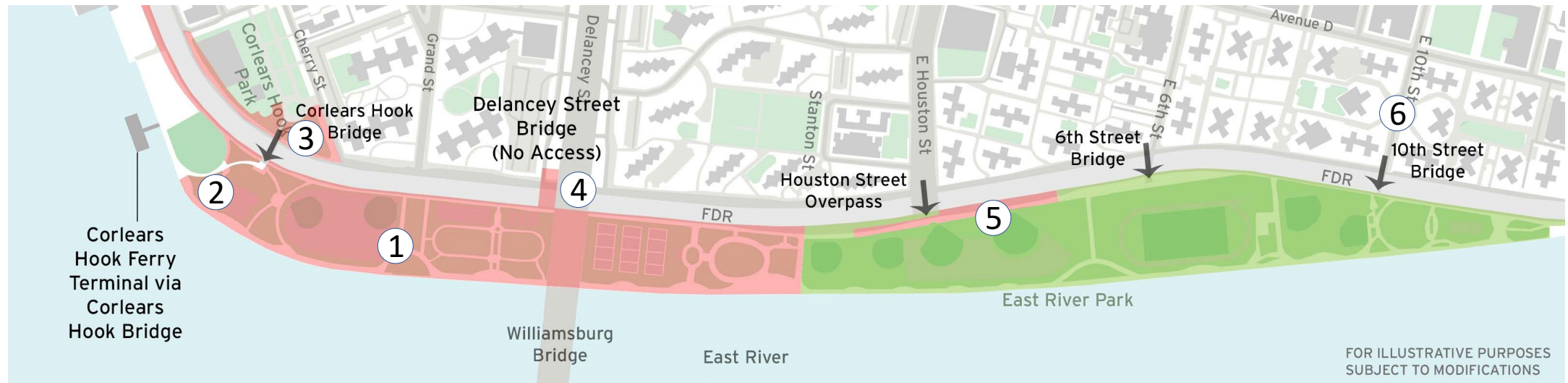
PA 1 | UPCOMING CONSTRUCTION ACTIVITIES

ALL WORK IS SUBJECT TO CHANGE

- February:

1. Shallow clearing and grubbing activities & utility work continue in the closed area of park. Subgrade activities will begin.
2. ConEd utility work near the Ferry Landing
3. Corlears Hook Park partial closure to facilitate construction activities starting **week of March 7, 2022**
4. Delancey Street sidewalk closure continues
5. ConEd work in Shared Use Path around E. Houston Street continues
6. E. 10th Street ConEd utility replacements – date TBD

Weekly Bulletins & Advisories will be issued with construction activities.



WHAT WE'VE HEARD

Parks Neighborhood Recreational Resources

1. ESCR homepage: www.nyc.gov/escr
2. Scroll down to Parks Neighborhood Recreational Resources shortcut.
3. Or <https://www.nycgovparks.org/planning-and-building/planning/neighborhood-development/east-side-coastal-resiliency/map>
4. Click on 'Find an Activity' selection menu to find an amenity or recreation

Unlock the key to NYC
Get the latest on the COVID-19 Vaccine
Agency service suspensions/reductions

NYC
The East Side Coastal Resiliency Project

Project Area 1
Construction Underway in East River Park

LEARN MORE

Construction in ESCR's Project Area 1, which encompasses work between Montgomery Street and E. 25th Street is underway. Park closure south of Stanton Street including the Delancey Street Bridge and Greenway began on Monday 12/6/21. Learn about construction progress and view current closures and construction updates.

East Side Coastal Resiliency

The East Side Coastal Resiliency (ESCR) Project is a coastal protection initiative, jointly funded by the City of New York and the Federal government, aimed at reducing flood risk due to coastal storms and sea level rise on Manhattan's East Side from East 25th Street to Montgomery Street. The backbone of this project connects with the natural "fingers" to the 100-year floodplain area where the land is higher along the coastline, making it easier to close the system of storm water entering from the north and south. The project design integrates flood protection into the community fabric, improving waterfront open space and access, rather than sealing off the neighborhood. Construction on the East Side Coastal Resiliency project began in Fall 2020 and will continue through 2026.

- Construction Progress
- Resiliency and Flood Protection
- Project Background & Goals
- Project Design
- Construction Notices
- Parks Neighborhood Recreational Resources
- Environmental & Related Documents
- NYC DOT's Street Closure Map
- Work With Us
- NYC DOT's Street Closures

East Side Coastal Resiliency: Neighborhood Recreational Resources

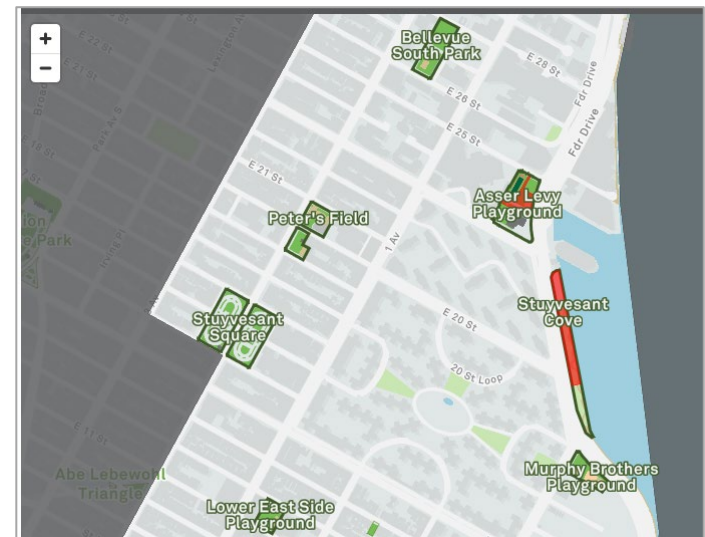
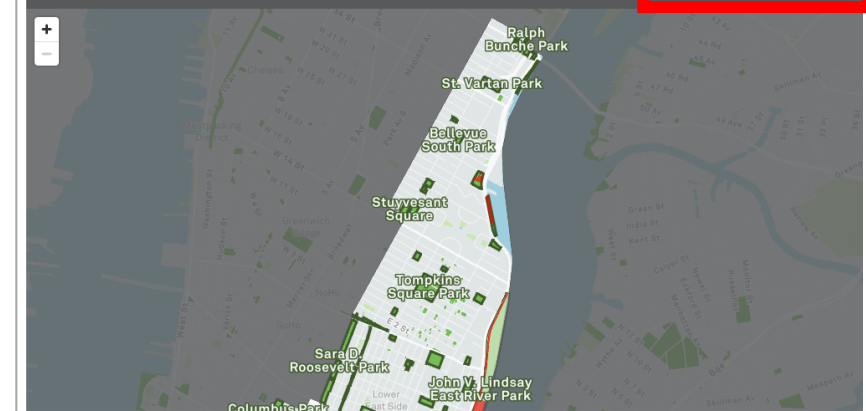
The East Side Coastal Resiliency (ESCR) Project is a coastal protection initiative along Manhattan's East Side waterfront from East 25th Street to Montgomery Street. This project is vital to New York's future, as we look to meet the challenges of climate change, including increased risk of flooding due to sea level rise and more intense storms. Through this project, we will also improve community access to parks and open space along the East Side.

This page serves as a resource for park goers looking for spaces to play and relax while the project is in construction. During construction, portions of East River Park, Murphy Brothers Playground, and Asser Levy Playground will be temporarily closed. We have expanded access to resources and amenities in the neighborhood in preparation for the project's launch.

To learn more about the project and get the latest updates on design and construction, visit the [official ESCR](#)

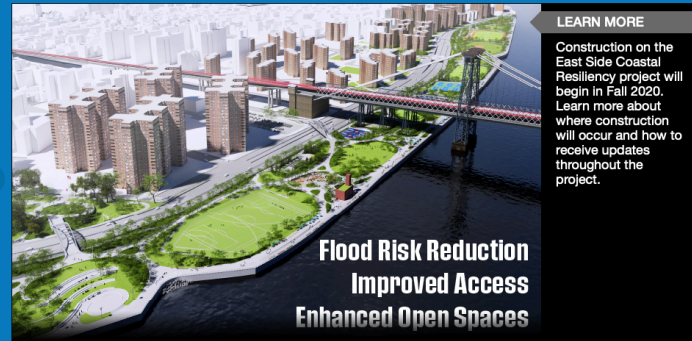
Please use the map below to find sports fields, courts, playgrounds and other recreational resources in the neighborhoods surrounding the ESCR project area. Note: Tennis will be available when the Pier 42 deck opens later in 2022.

■ Park areas under construction and temporarily closed to the public.



WHAT WE'VE HEARD

- **Ferry signage:** under review
- **Flyover bridge:** design contract is awaiting OMB registration
- **Murphy Brothers comfort station**
- **Ave C bike lane:**
 - recently installed flexible delineators on the areas with complete markings (last week 2/17)
 - will be returning to complete E. 14th Street markings and other outstanding details this Spring
 - note, this would not include outstanding markings between E 6 St and E 9 St where the ongoing open restaurant conflicts require temporary standard lane markings



LEARN MORE Construction on the East Side Coastal Resiliency project will begin in Fall 2020. Learn more about where construction will occur and how to receive updates throughout the project.

Flood Risk Reduction Improved Access Enhanced Open Spaces

East Side Coastal Resiliency

The East Side Coastal Resiliency (ESCR) Project is a coastal protection initiative, jointly funded by the City of New York and the federal government, aimed at reducing flood risk due to coastal storms and sea level rise on Manhattan's East Side from East 25th Street to Montgomery Street. The boundaries of this project correspond with the natural "pinch-points" in the 100-year floodplain: areas where the land is higher along the coastline, making it easier to close the system off from water entering from the north and south. The project design integrates flood protection into the community fabric, improving waterfront open spaces and access, rather than walling off the neighborhood. Construction on the East Side Coastal Resiliency project will begin in Fall 2020 and continue through 2025.

 Construction Progress	 Resiliency & Flood Protection	 Project Background & Goals	 Project Design
Construction Notices View our most recent community presentations for updates as we prepare for upcoming construction activities.	Resiliency and Flood Protection Learn more about ESCR's resiliency and the forward-thinking flood protection measures being implemented to protect 110,000 New Yorkers from the impacts of climate change.	Project Background and Goals Read about the history and background of ESCR, and the goals driving this technically complex infrastructure project.	Project Design From flood protection measures to bike lanes and ball fields, the ESCR project is improving open spaces and access in the Lower East Side while strengthening the city's coastline.

NEED MORE INFORMATION?

VISIT US AT: www.nyc.gov/escr

