

COMMUNITY ADVISORY GROUP (CAG)

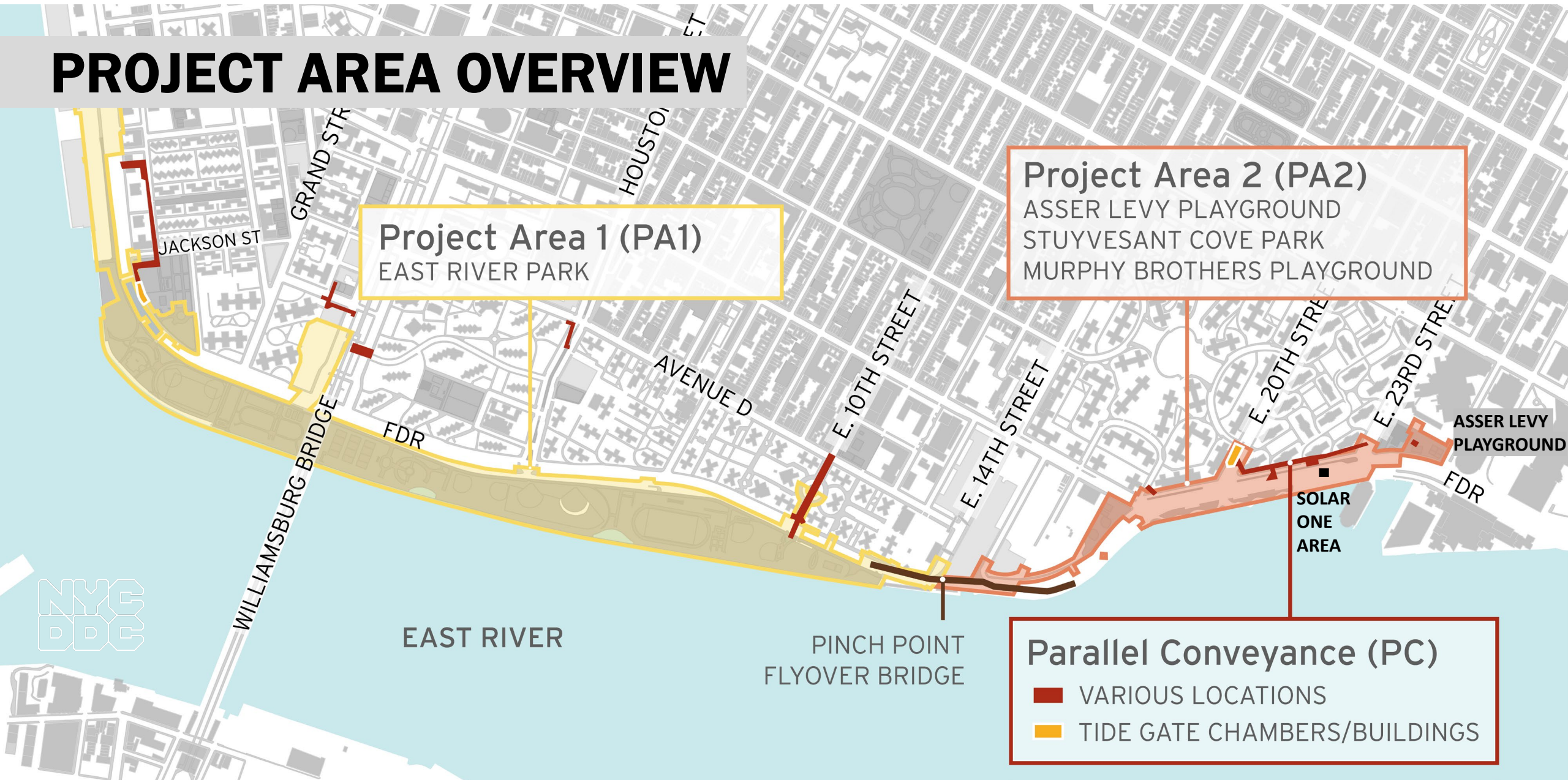
Meeting #14

HIGHLIGHTS

- Overview of Contracts & Construction Phase Updates
- August Air Quality Update
- Section 3 MWBE Resources
- What We've Heard
- PA1 Construction Start & Approach

OVERVIEW OF CONTRACTS

PROJECT AREA OVERVIEW



OVERVIEW OF CONTRACTS

Project Area 1 (PA1)

- Notice to Proceed (NTP) issued to contractor August 16, 2021
- tennis courts and ball fields permitted with Parks through November
- compost area restoration to passive lawn mid-October to mid-November
- Park closures to begin November 1, 2021

Project Area 2 (PA2)

- in construction on phase 1
 - Asser Levy Playground, Stuyvesant Cove Park north of 20th Street & Solar One Area

Parallel Conveyance (PC)

- procurement is ongoing

PA2 | CONSTRUCTION PROGRESS

ALL WORK IS SUBJECT TO CHANGE

1. Stuyvesant Cove Park north of 20th St.

- pile installation & floodwall construction

2. E 23rd St. Intersection:

- pile installation

3. West Service Road

- Pile installation

4. Asser Levy Playground:

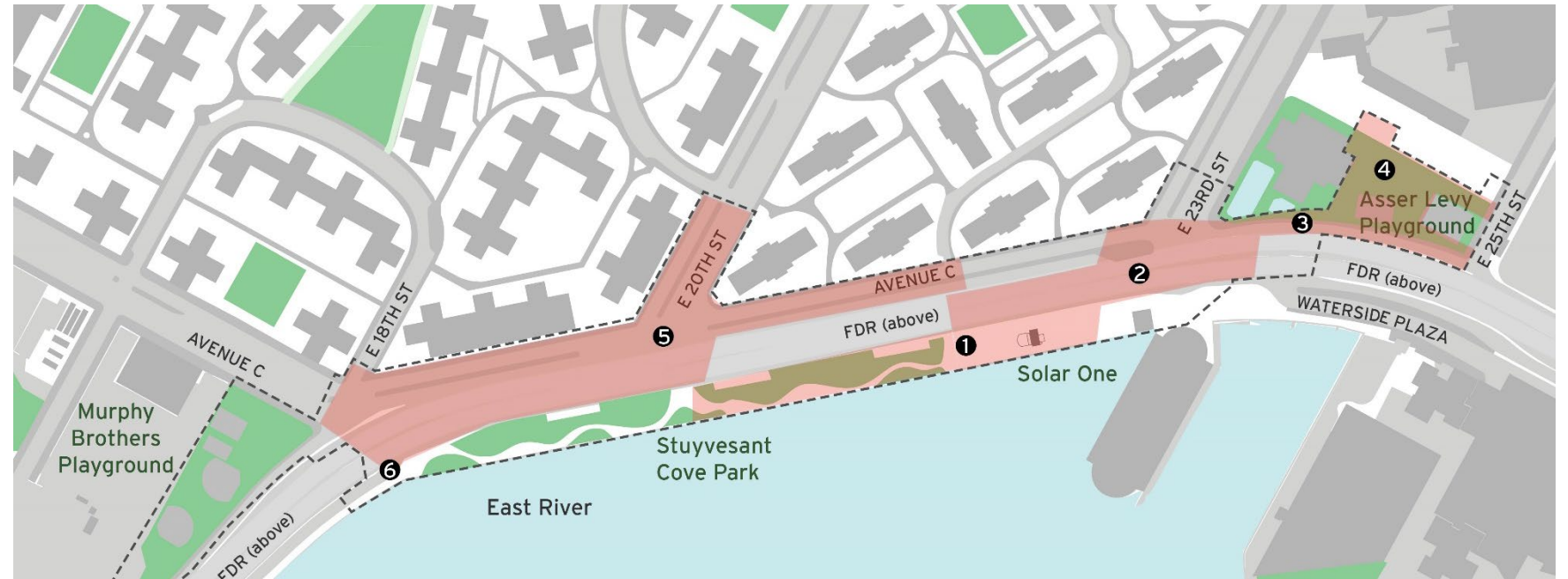
- pile installation

5. Avenue C and E 20th Street:

- ConEd work

6. FDR Dr. NB exit 7 ramp:

- Lane shift and sewer work



AIR QUALITY MONITORING

AQM | AUGUST UPDATE

Work activities at Asser Levy Playground, E23rd Street and Solar One focused on pile installation and floodwall foundation construction.

The PM daily value (24-hour TWA) did not surpass the PEL for the month of August.

Levels of Particulate Matter surpassed the PEL for 15-min TWA on several occasions:

- **August 6 and 25:** over durations of under 10 minutes.
- **August 9, 10, 13 and 16:** over durations of 15-20 minutes. Dust control measures were implemented.
- **August 17 and 27:** over durations of 30 and 10 minutes, however, were outside of construction hours and were determined to be not related to PCC activities.
- Construction activity was closely monitored, and dust mitigation techniques were continuously implemented to contain airborne particles due to construction activities.

SECTION 3

M/WBE

SECTION 3 & MWBE OPPORTUNITIES

- [Workforce1 Career Discovery NYC](#): Workforce1 partners with four (4) training organizations that offer pre-apprenticeships with direct entry to the unionized construction industry. The first step to enroll in a pre-apprenticeship is to attend an information session. Interested individuals should complete a brief [survey](#). Workforce1 will follow up with details for qualified candidates about the training, starting the application process, and the Information Sessions this Fall. See [program information sheet](#) for more info.
- [Workforce1 Virtual Site Safety Training](#): Looking for a career in the construction industry? The Upper Manhattan Workforce1 Career Center offers the full 40 hours of Virtual Site Safety Training AT NO COST. They also offer 10 hours of Virtual Site Safety Training for those individuals who already have a valid 30 Hour OSHA credential, AT NO COST. See [flyer](#) for eligibility and registration information.
- [Construction Skills](#): Construction Skills is recruiting now for their [fall cohort](#)! This is a City funded pre-apprenticeship program that links graduates to the building and construction trade unions. In addition to the fall program, [year round](#) opportunities are also available!

www.nyc.gov/escr/work



WHAT WE'VE HEARD

- Parallel Conveyance Resources
 - [2019 Open House Boards](#)
 - [2019 Floodgates and Drainage Animation](#)
 - [FEIS Water and Sewer Infrastructure Chapters](#)
- Air Quality Quarterly Report and Fact Sheet

PROJECT AREA 1 CONSTRUCTION APPROACH

PROJECT AREA 1 CONSTRUCTION APPROACH

- Overview
- Construction Approach
- Interim Recreation
- Stages of Construction
- Resources

BUILDING DURABLE PROTECTION FOR NYC

Key Objectives

- Bring full flood protection on-line as quickly as possible
- Maintain public access to a minimum of 42% of the park throughout construction
- Mitigate park closures by providing interim recreation options throughout the neighborhood

Construction Priorities

- Maintain public and worker safety during construction
- Ensure constructability and logical sequencing of work
 - Deepest excavation first (Tennis Courts) to improve upland drainage
 - Complex carbon fiber wrapping work on Con Edison transmission line
 - Contiguous stretches to allow for soil settlement

CONSTRUCTION & PARK USE

- Leagues will be able to use ball fields through end of the season, November 2021
- Permits for the BBQ areas and amphitheater available through November 2021
- Four tennis courts to remain open through 2021 permit season
- Composting relocating in mid-October to allow the contractor to convert the area into open space (mid-October to mid-November)
- Construction completion by end of 2026 given project pause during COVID and procurement delays

CONSTRUCTION APPROACH

MID-OCTOBER to NOVEMBER 21, 2021

(4) Tennis Courts Remain Open
until 11/21/2021



SUMMARY

- Fields will remain open through the end of league season in November
- Four (4) tennis courts to remain open until November 21, 2021
- Compost Area under construction starting October 2021, for restored lawn area
- Deep sewer excavation begins in Tennis Court area in November 2021
- Shared Use Path fully closed to the public by November 21, 2021. It will be available for Parks Department and Emergency vehicle access.

NOVEMBER 21 – END OF YEAR 2021



SUMMARY

- Compost Area is open as new passive lawn space
- Access to the ferry and lawn space via Corlears Hook Bridge
- Closures start on the southern end of the park
- Southern ball fields permitted until November 30, 2021
- Northern fields, comfort stations, basketball courts, and BBQ areas remain open

SUMMER 2022



SUMMARY

- Temporary pedestrian bridge will be open for access to ferry and southern restored lawn area
- Pier 42 Deck (Parks/EDC project) providing new recreational amenities will open
- Northern fields, comfort stations, basketball courts, and BBQ areas remain open

SUMMER 2023



SUMMARY

- New universally accessible Corlears Hook bridge complete (temporary bridge removed)
- First portion of the newly rebuilt park complete and reopened
- Opening includes two new ballfields in the south to allow northern ballfields to close
- Pier 42 Deck and Upland Park opened to the public (Parks/EDC Project)

SUMMER 2024



SUMMARY

- New best-in-class amenities opened in southern end and middle section of the park
- New universally accessible Delancey Street Bridge complete
- Reconstructed esplanade complete and available thru Reach F to provide waterfront access
- Construction of coastal flood protection to begin in Reaches G thru J
- Passive lawn space in Reach C under construction to final configuration

SUMMER 2025



SUMMARY

- Fill settlement measures in place and monitoring ongoing
- New park construction begins to the north
- Phased reopening of amenities in Reaches G through J begins in Fall 2025
- E 10th Street Bridge replacement ongoing
- Flyover Bridge under construction

SUMMER 2026



SUMMARY

- New universally accessible E 10th Street Bridge replacement complete
- Phased reopening of amenities continues including additional ball fields
- Settlement operation complete
- Final park amenities and field construction operations ongoing

LATE 2026 PROJECT COMPLETION

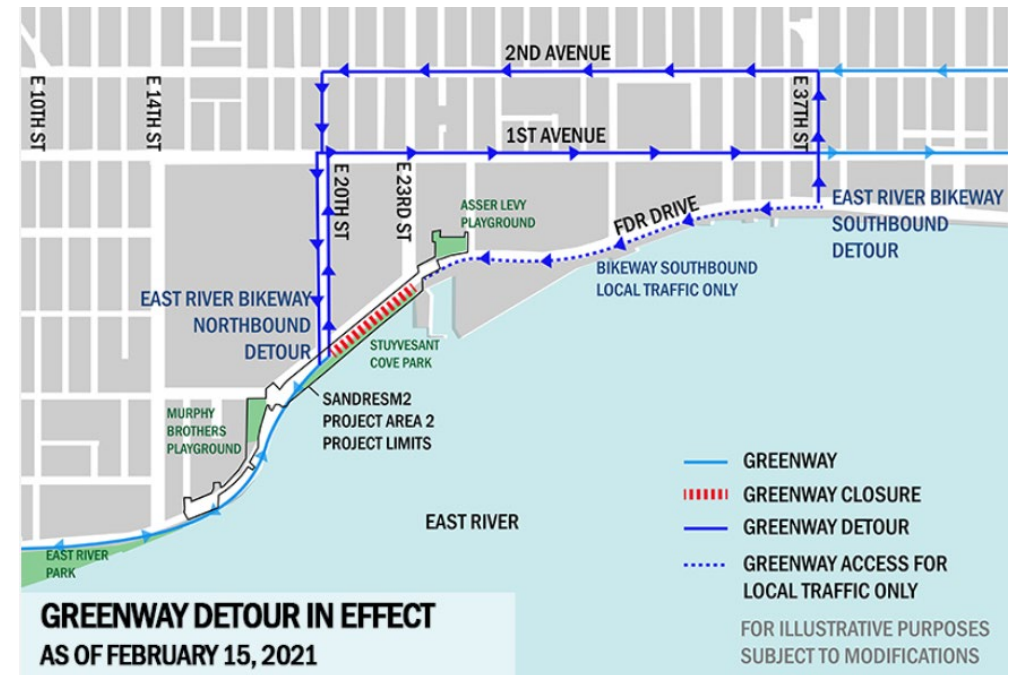


PEDESTRIAN ACCESS

- Shared Use Path/Greenway will be closed to pedestrians throughout construction
 - Access to open areas will be provided by way of pedestrian bridges and entrances (see map)
 - Bicycle detour as shown in final design briefings will be coordinated further with DOT
 - Pedestrian detours to be refined during construction phases with DOT and Parks
- Shared Use Path/Greenway will be open to Parks Department and Emergency vehicles



Example of pedestrian access

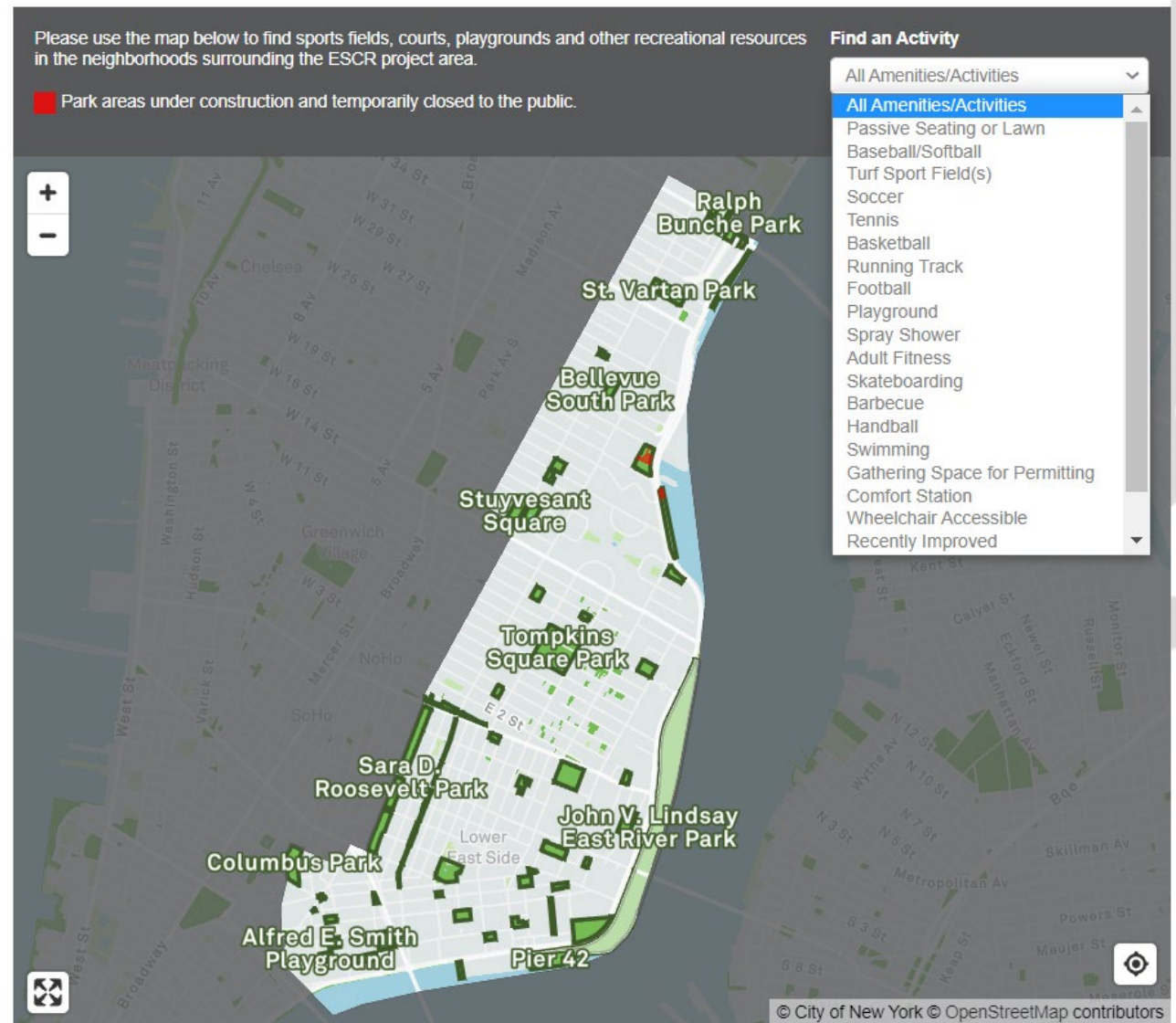


Example of detour map from Project Area 2

INTERIM RECREATION

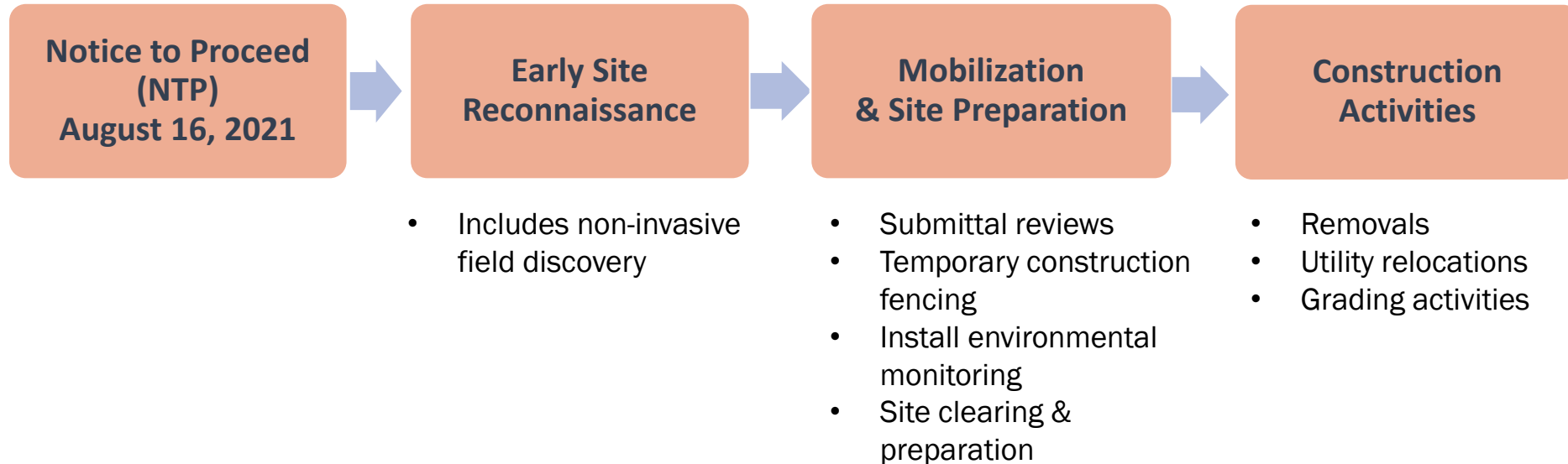
INTERIM RECREATION (PARKS)

- Neighborhood Recreational Resources webpage:
<https://www.nycgovparks.org/planning-and-building/planning/neighborhood-development/east-side-coastal-resiliency/map>
- Parks Interim Recreation Presentation:
<https://www1.nyc.gov/assets/escr/downloads/pdf/ESCR-Interim-Rec-CB3-Update-Spring-2021-FINAL.pdf>



STAGES OF CONSTRUCTION

CONSTRUCTION PROGRESS



RESOURCES DURING CONSTRUCTION

ESCR RESOURCES | CCL

- **Joyce Xin**

Project Area 1 (PA1)

Joyce Xin has been involved in large public projects and initiatives for several city agencies including the New York City Housing Authority, New York City Department of Transportation, New York City Parks in addition to work with several private outreach organizations. Joyce is experienced in conducting grassroots outreach and data management within historically disadvantaged communities in New York City, NYCHA developments and other stakeholder groups. She is fluent in English and Mandarin and has worked in design and construction, as well as data analysis and various business fields on projects spanning several continents.

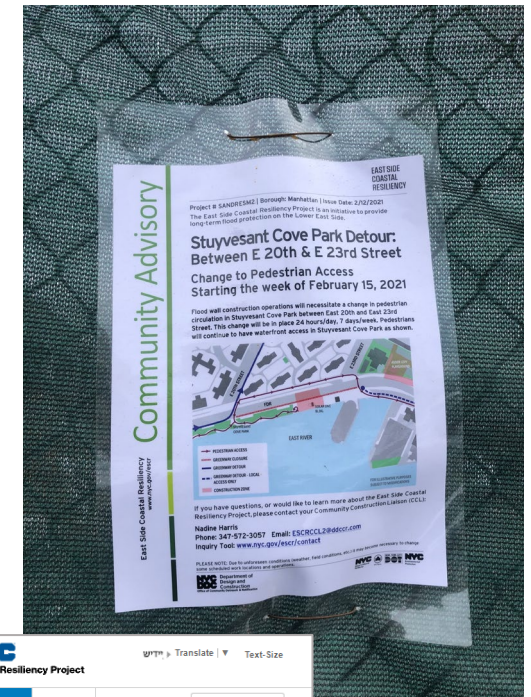
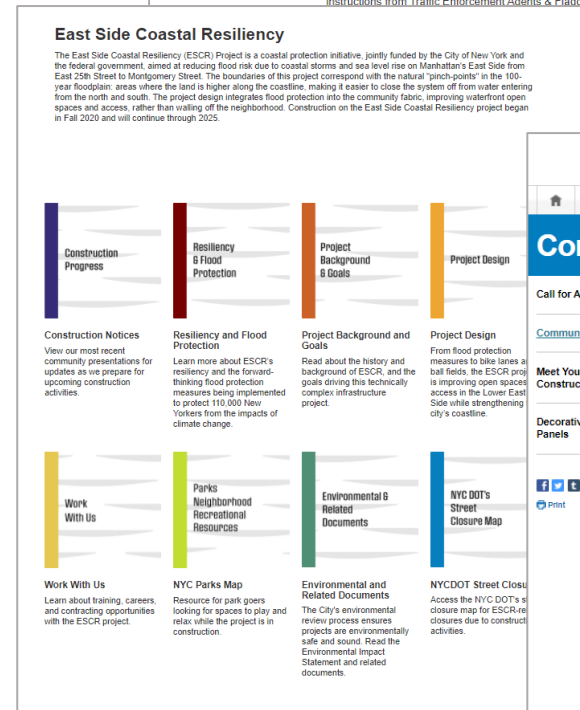
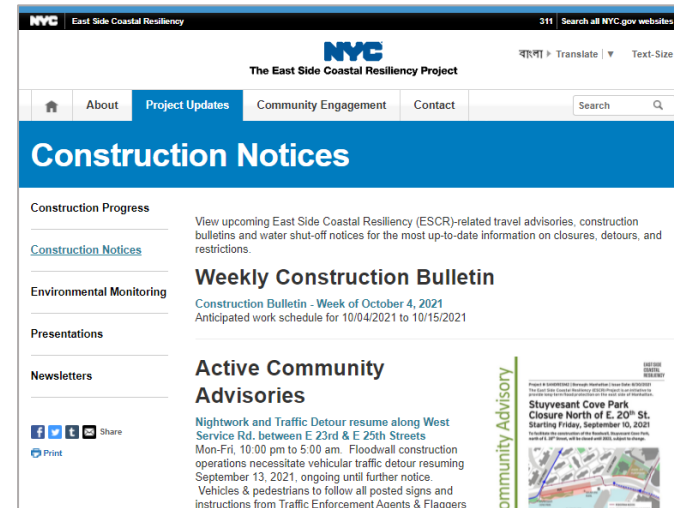
Joyce is very excited to be working on this resiliency project and looks forward to meeting all of you in the community.

Contact Joyce:

- Through the Inquiry Tool: www.nyc.gov/escr/contact
- Via email: ESCRCCL1@ddccr.com
- Via mobile: 929-844-0408

ESCR RESOURCES

- ESCR Website: www.nyc.gov/escr
 - NYC DOT Street Closures
 - Parks Neighborhood Recreational Resources
- ESCR Inquiry Tool: www.nyc.gov/escr/contact
- Sign up for weekly construction bulletins, advisories and newsletters www.nyc.gov/escr/contact
- Upcoming Community Meetings: <https://www1.nyc.gov/site/escr/community-engagement/community-events.page>
 - Community Board 3
 - Community Advisory Group
- CCL: PA1 Joyce Xin escrccl1@ddccr.com
PA2 Nadine Harris escrccl2@ddccr.com
- Site Signage



QUESTIONS