

# East Side Coastal Resiliency SANDRESM1

Public Design Commission  
Preliminary Design Review  
East River Park Amphitheater Structure

September 12, 2022



**BOROUGH CONTEXT**



**NEIGHBORHOOD CONTEXT**



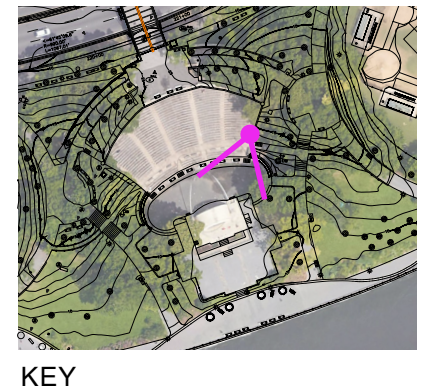
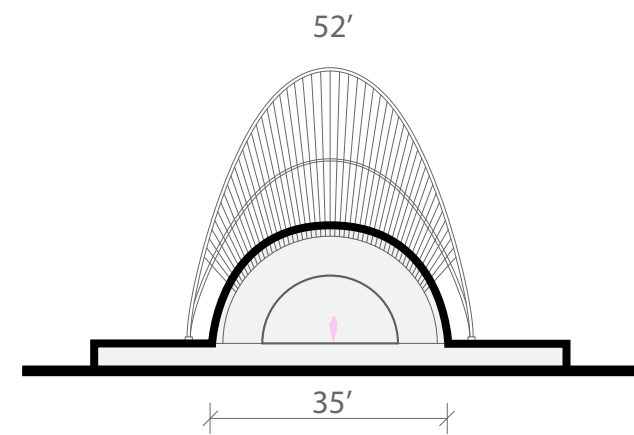
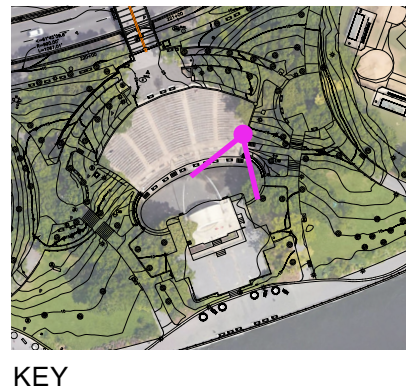
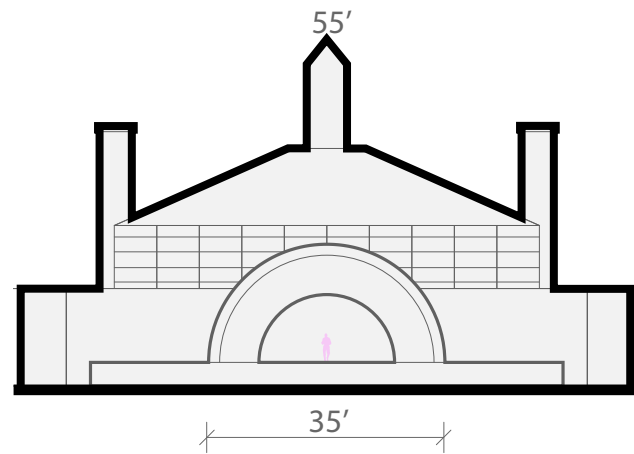




Original east river park amphitheater & recreation center, 1941



Rehabilitated structure, 2019





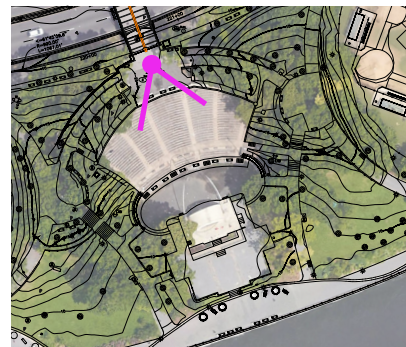
View from Corlears Hook Pedestrian Bridge

**AS ONE ENTERED THE PARK FROM THE CORLEARS HOOK BRIDGE, THE PREVIOUS STRUCTURE WAS VISIBLE AND HELPED CREATE A SENSE OF ARRIVAL.**

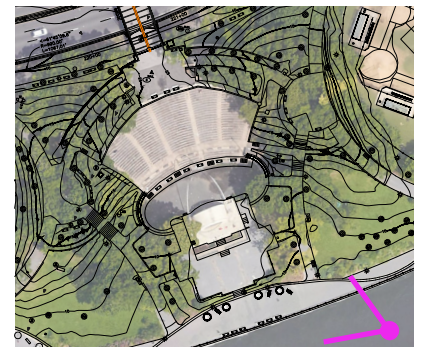


View from East River

**WHILE VISIBLE FROM THE RIVER, THE PREVIOUS STRUCTURE WAS TUCKED INTO THE PARK, ABOUT 80-90' FROM THE PLATFORM EDGE.**



KEY



KEY



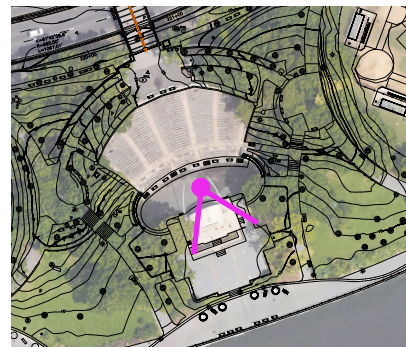
**THE PREVIOUS STRUCTURE WAS AN OPEN ARCH THAT FRAMED VIEWS TO THE EAST RIVER AND BROOKLYN.**

View through arch to water

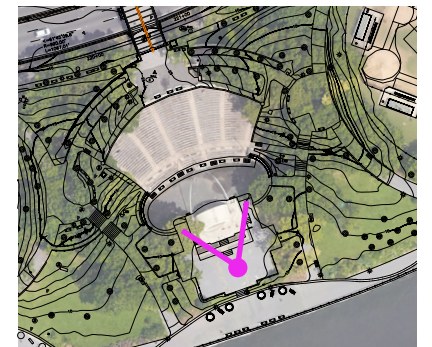


**THIS OPEN ARCH WAS NOT ONLY A BACKDROP FOR PERFORMANCES, IT WAS A COMMUNITY PAVILION.**

View through arch to seating



KEY

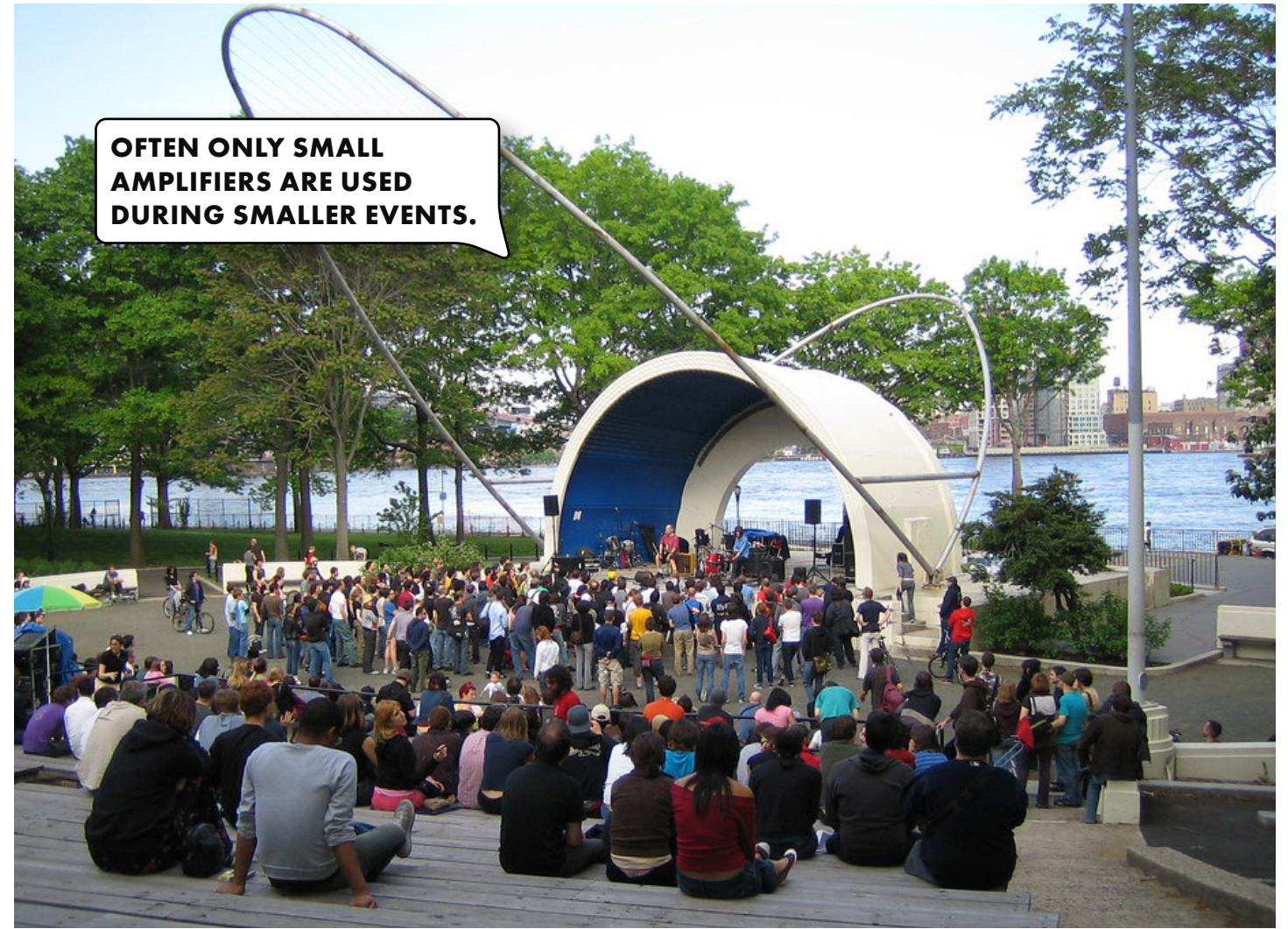


KEY



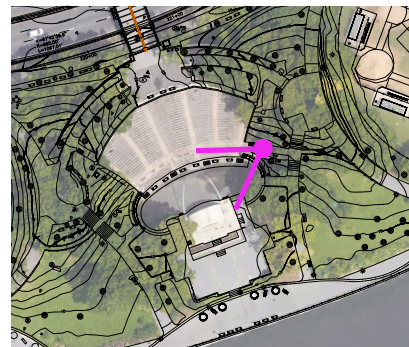
**DURING LARGE EVENTS, SUCH AS SUMMER STAGE, A TEMPORARY STAGE WITH INDEPENDENT RIGGING, LIGHTING, AND AMPLIFICATION IS INSTALLED**

Large Performance

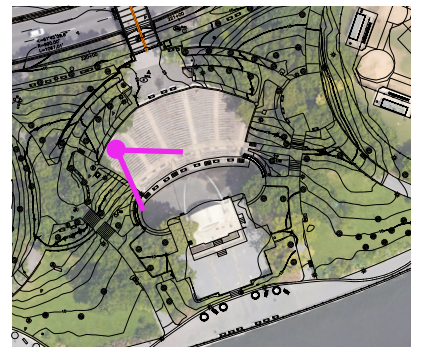


**OFTEN ONLY SMALL AMPLIFIERS ARE USED DURING SMALLER EVENTS.**

Small Performance



KEY



KEY



**LARGE PERFORMANCE**



- Larger events and performances for 1000+ spectators.
- Views towards performers on stage.
- All seating rows occupied (including overflow area).
- Significant audio amplification and separate rigging/stage setup.

**MEDIUM PERFORMANCE**



- Performances with around 500 spectators.
- Views towards performers on stage.
- Main seating area occupied.
- Some audio amplification.

**SMALL PERFORMANCE**



- For around 200 spectators
- Views towards performers on stage
- First rows and 'orchestra pit' occupied
- Less audio amplification.
- Most common permitted event size.

**GATHERING / EVENT SPACE**



- Gatherings of around 100 persons.
- Waterfront view backdrop.
- Occupies stage footprint.
- Limited need for audio amplification.

**IMPROMPTU PERFORMANCE**



- Small, informal events & performances.
- Secondary stage.
- Area for spectators and passers-by to gather.
- No audio amplification.

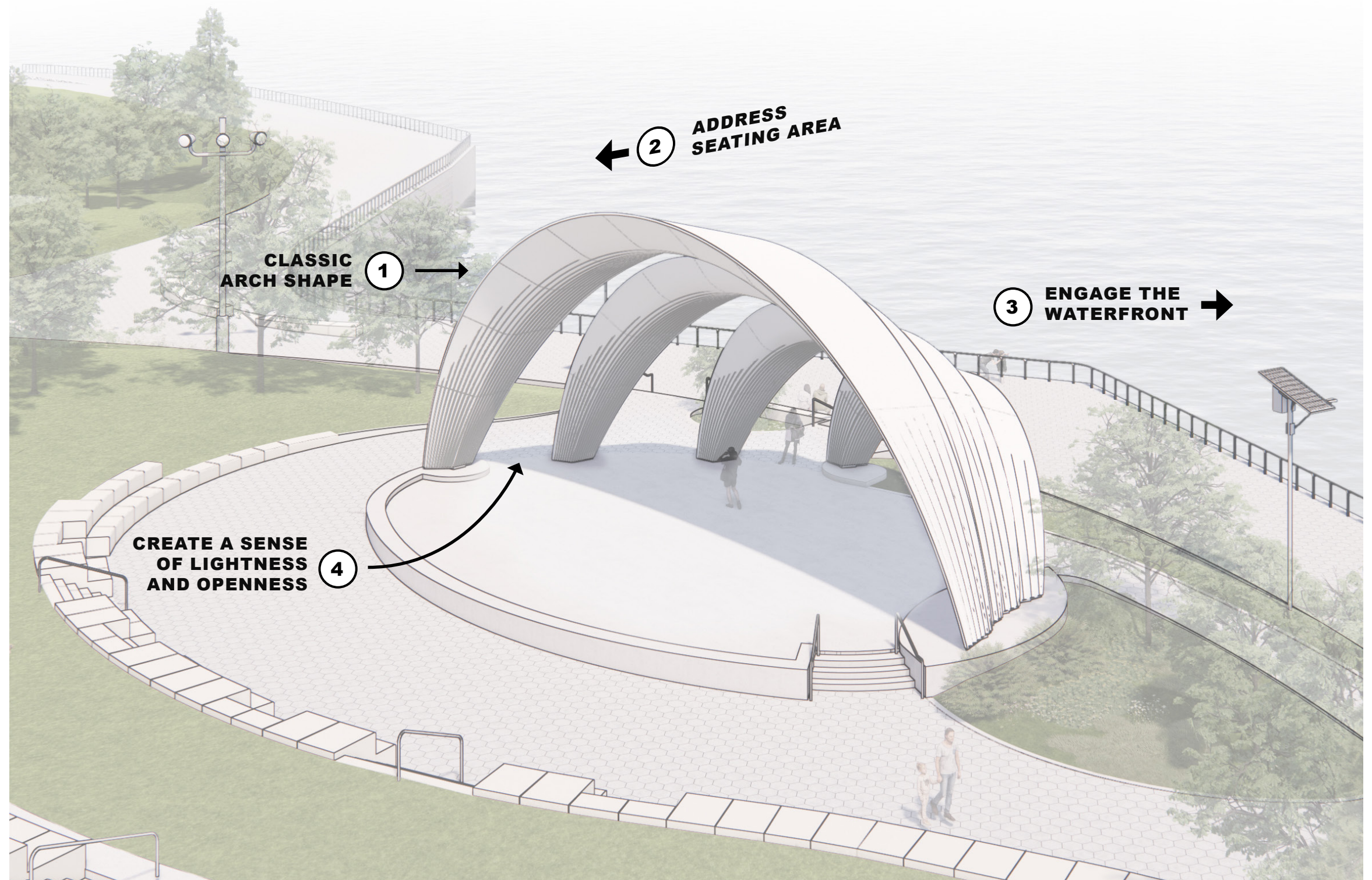
**HANGOUT SPOT**

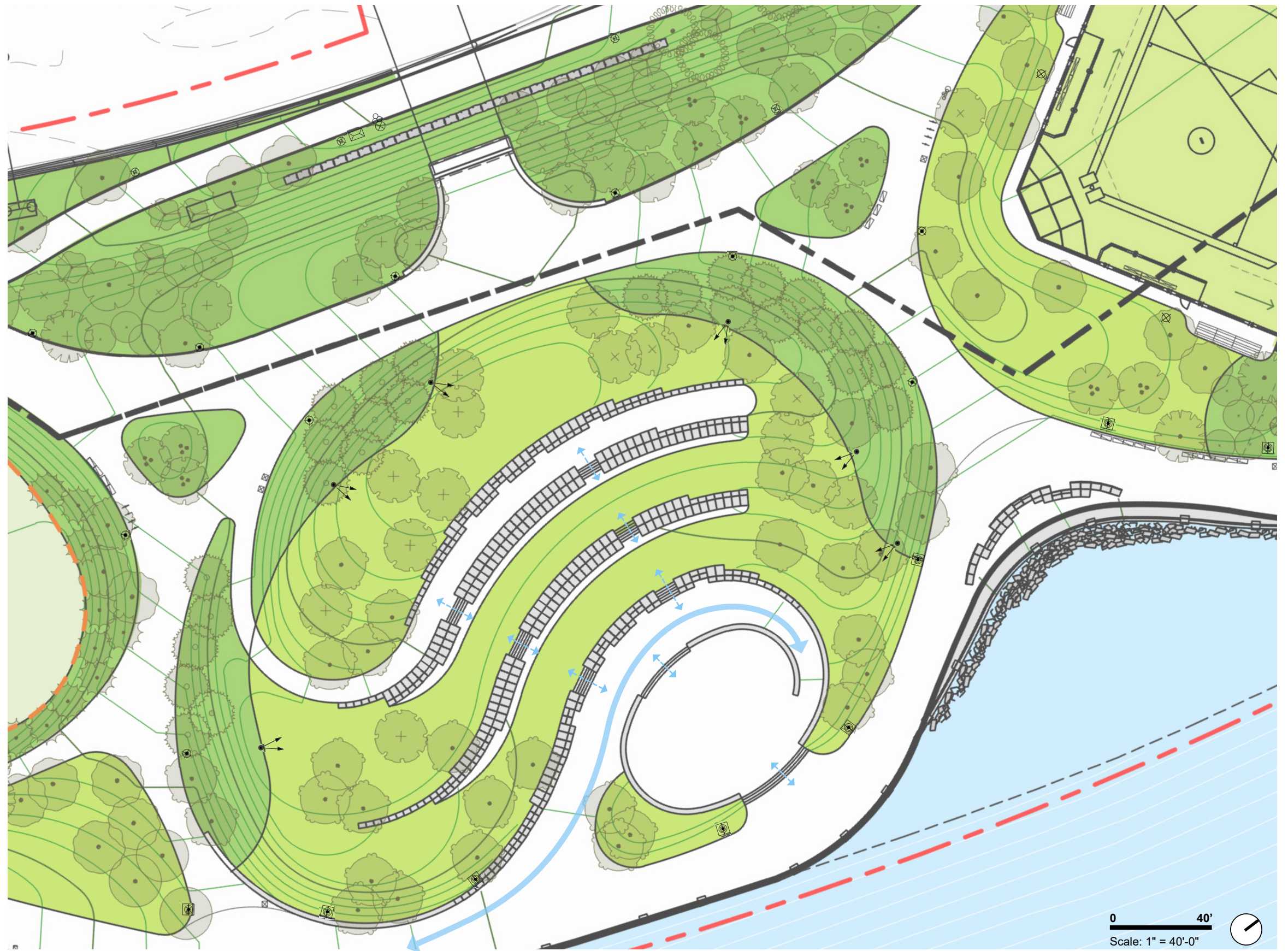


- Place to take a break and sit in the shade
- Addresses the waterfront



- 1 Embrace a Classic Arch Shape:**  
An arch shape pays homage to both the original structure and classic bandshells while creating opportunities for physical access and sight lines to the waterfront.
- 2 Clearly Address the Main Seating Area:**  
The front arch is on axis with the main seating area and is scaled to provide a sense of arrival as one enters from the Corlears Hook bridge.
- 3 Engage the Waterfront:**  
Views to the waterfront are framed by an arch parallel to the esplanade. This arch is lower than the front, creating a more intimate experience near the water. An accessible path and stairs connect the stage to the esplanade and reinforce this design as a multi-purpose bandshell and waterfront pavilion.
- 4 Create a Sense of Lightness and Openness:**  
An open-arch scheme allows for greater visibility and connectivity at the stage level. This approach also creates separation between the overlapping arches above, allowing light and air to enter while keeping the rain out.
- 5 Perform Acoustically:**  
The structure is designed to direct sound toward the seating and landscape. This will improve the sound quality for small, un-amplified events while mitigating sound projections toward the upland neighborhood.





- Legend:**
- Amphitheater Security Light
  - Solar Esplanade Light
  - Walkway Light

0 40'  
Scale: 1" = 40'-0"

**Clearly Address the Main Seating Area:**

- Center on the seating area and align with circulation stairs
- Provide a sense of entry and arrival by ensuring strong visibility from the Corlears Hook Bridge

**Engage the Waterfront:**

- Views to the waterfront are framed by an arch that is parallel to the esplanade.
- An accessible path and stairs connect the stage to the esplanade and reinforce this design as a multi-purpose bandshell and waterfront pavilion.

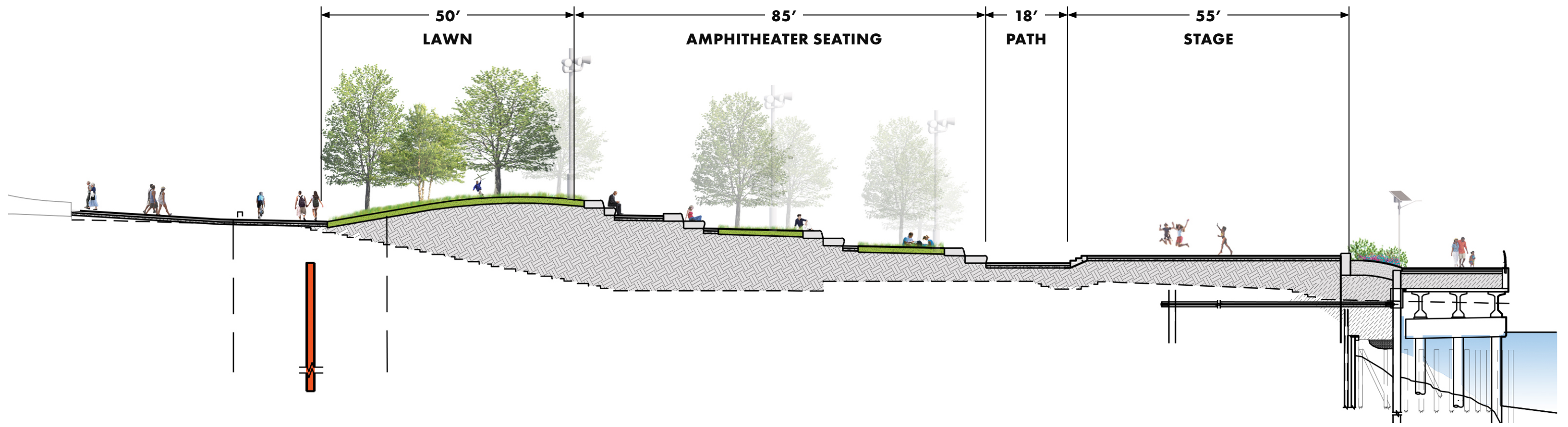
**Create a Sense of Lightness and Openness:**

- The open-arch scheme allows for greater visibility and connectivity at the stage level.

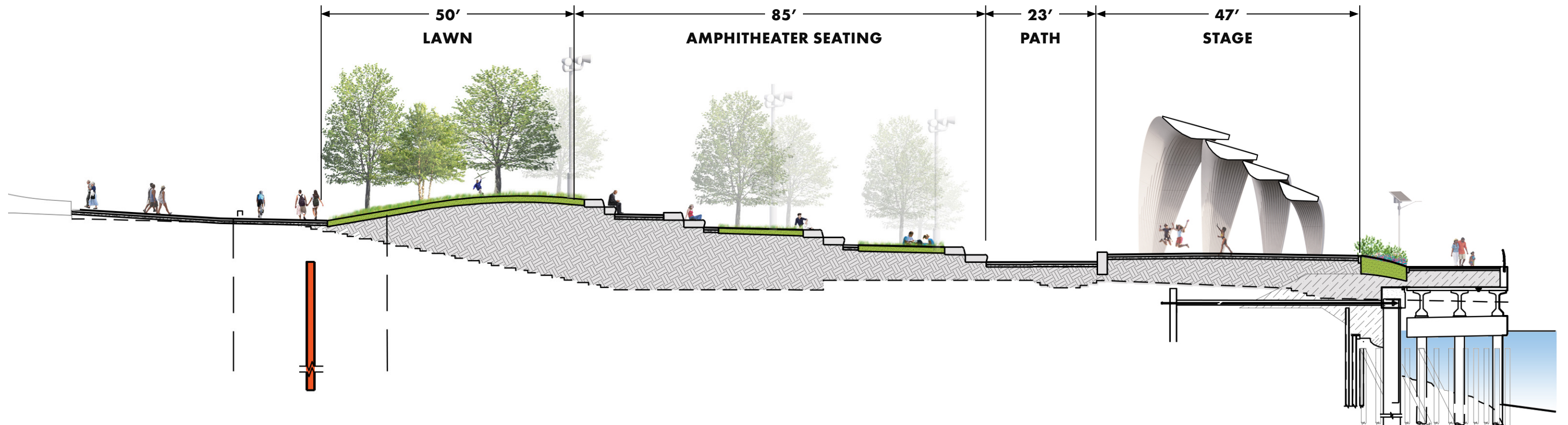
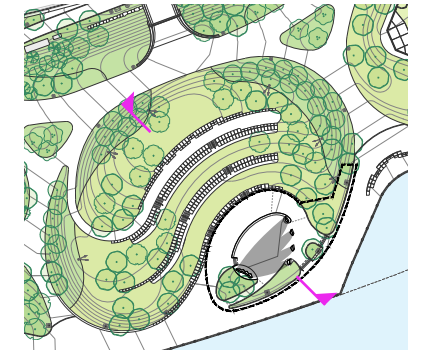


Legend (No Add'l or Change in Lighting in Scope):

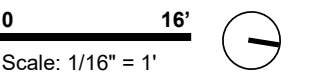
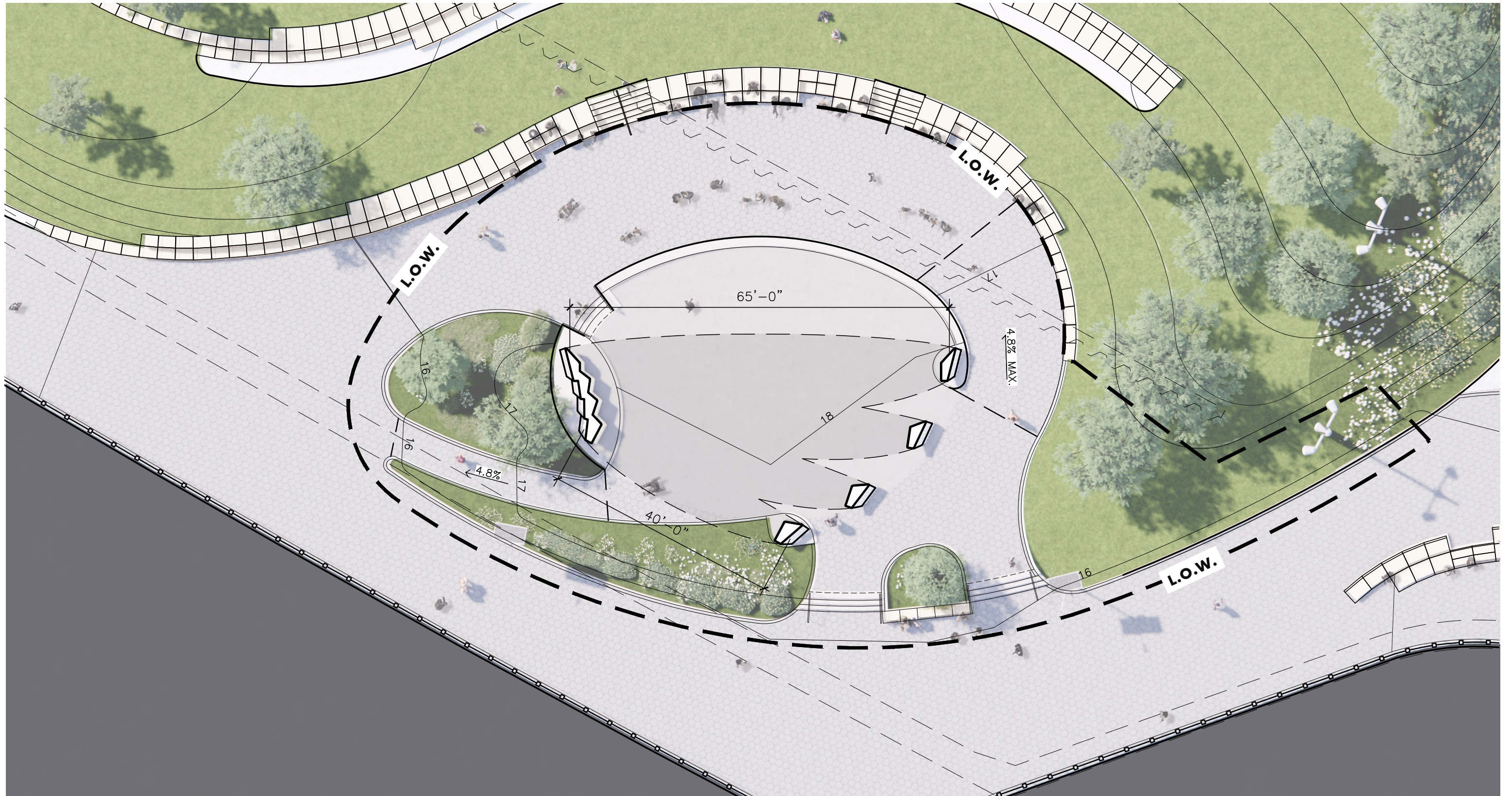
- Amphitheater Security Light
- Solar Esplanade Light
- Walkway Light

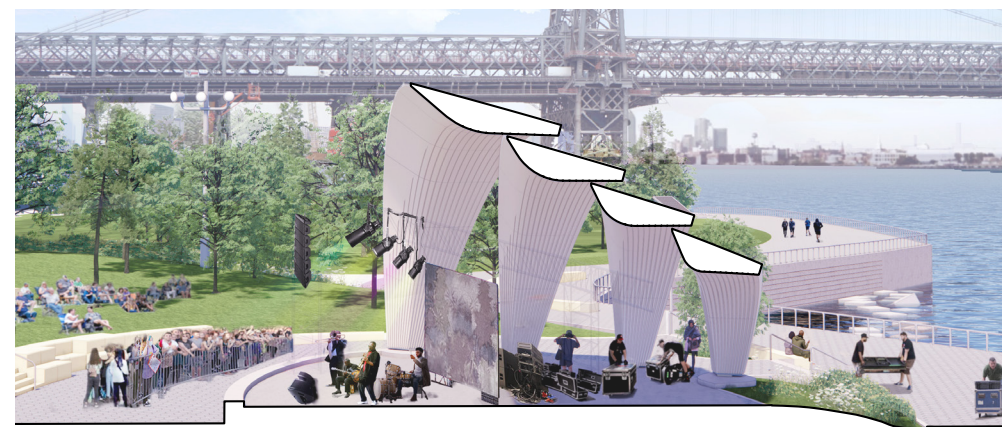
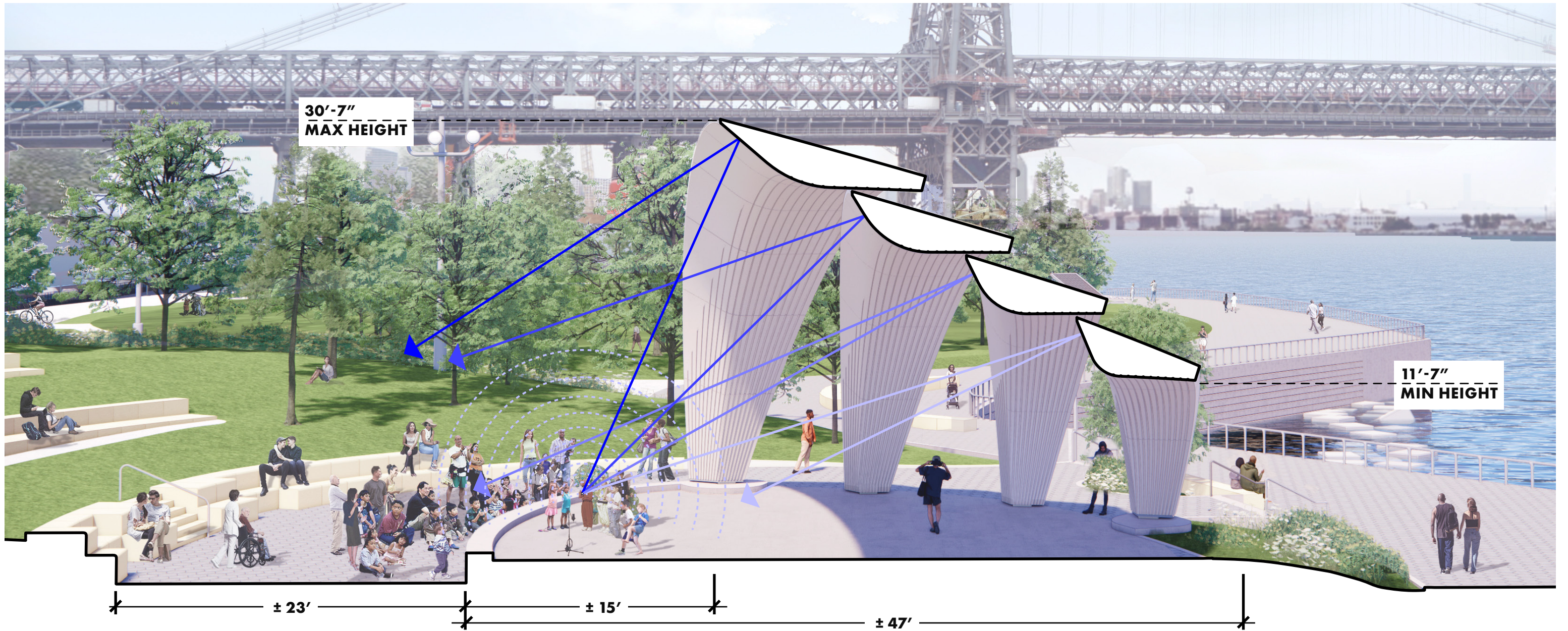


0 20'  
Scale: 1" = 20'-0"



0 20'  
Scale: 1" = 20'-0"

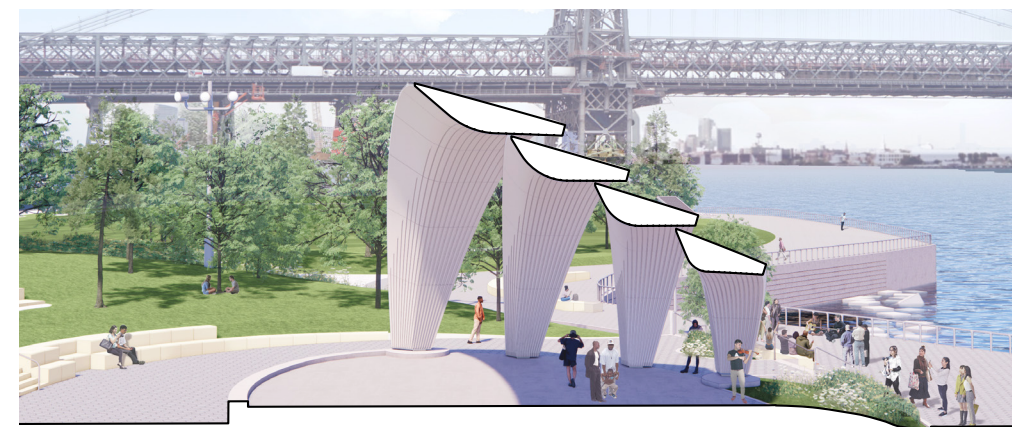




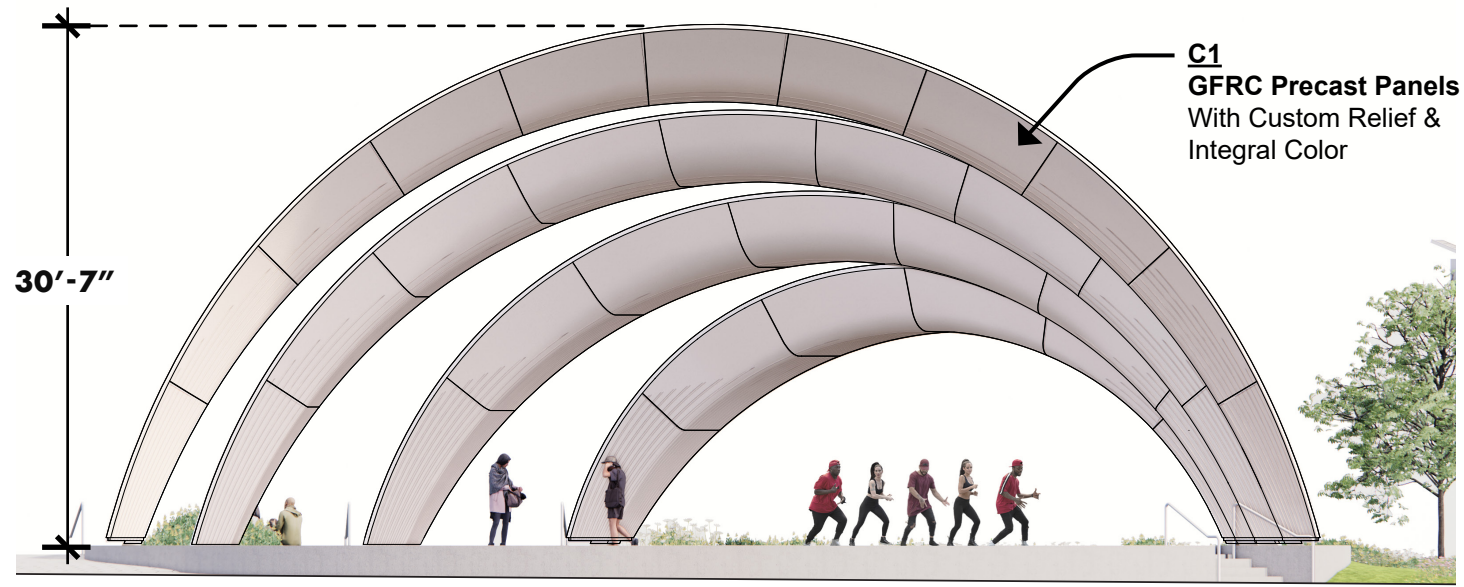
**LARGE PERFORMANCE**



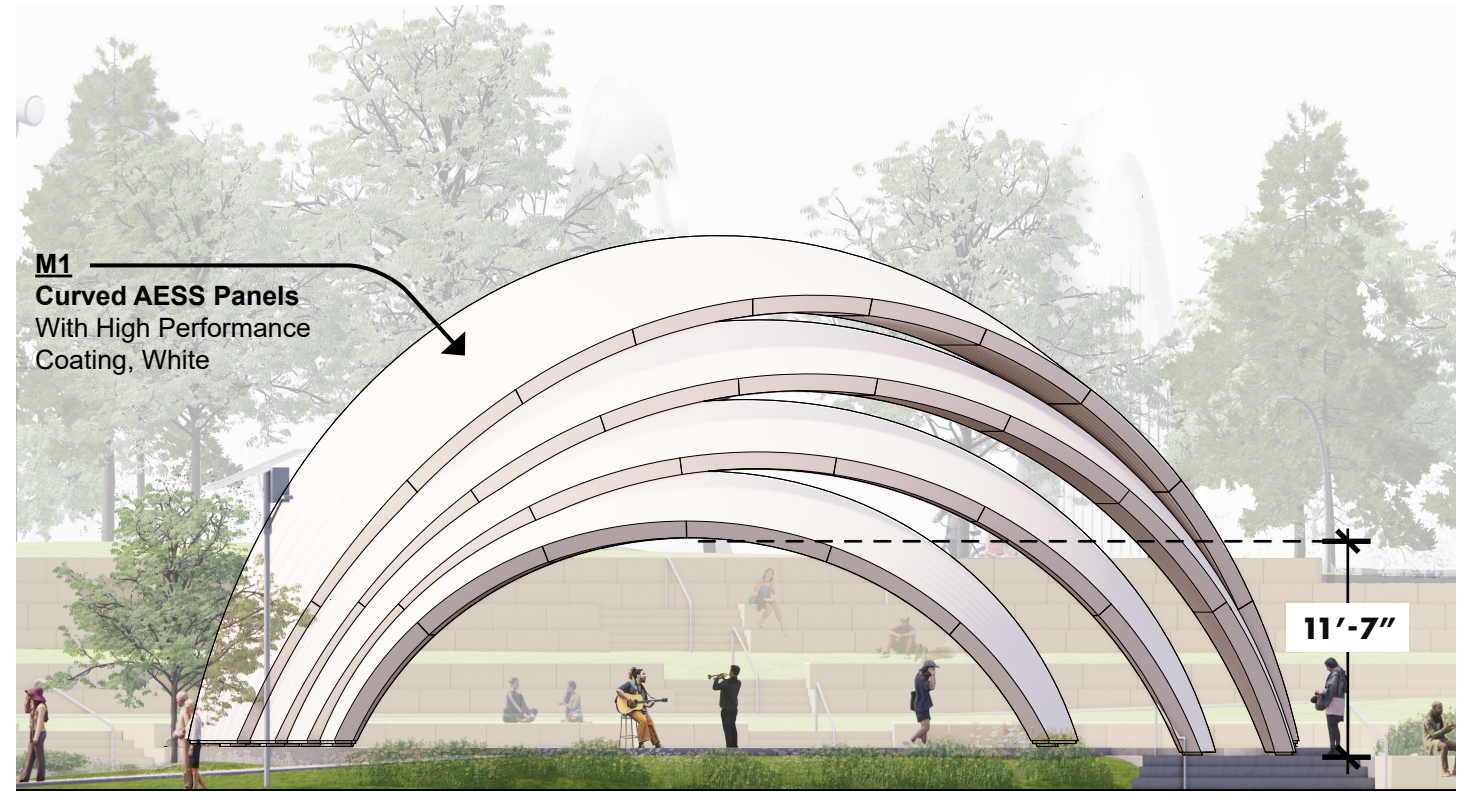
**GATHERING UNDER THE CANOPY**



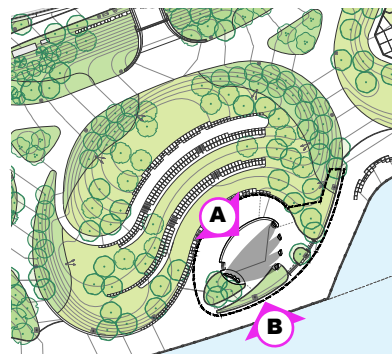
**EVERYDAY USE**



**A. FRONT ELEVATION**



**B. REAR ELEVATION**

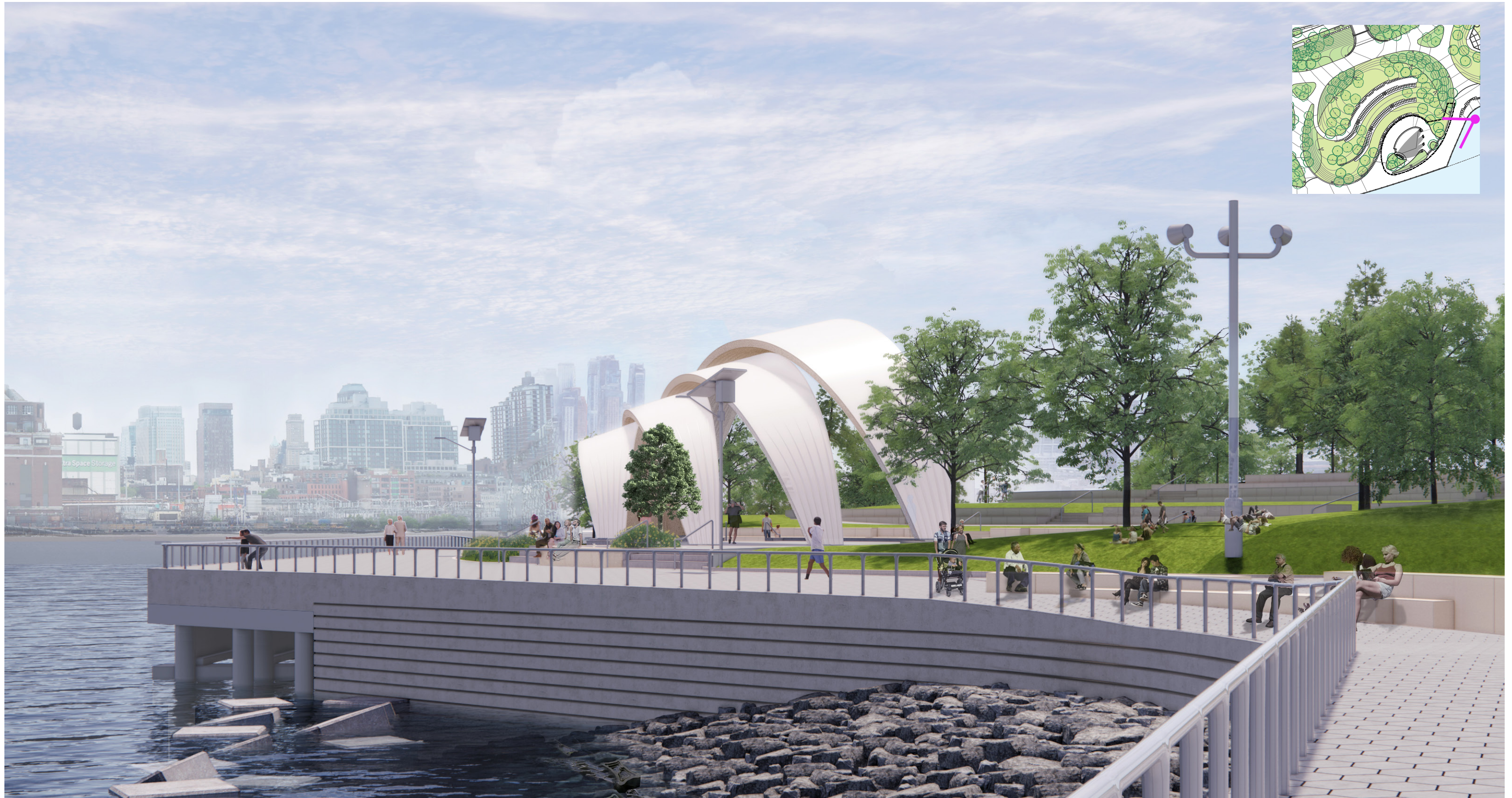


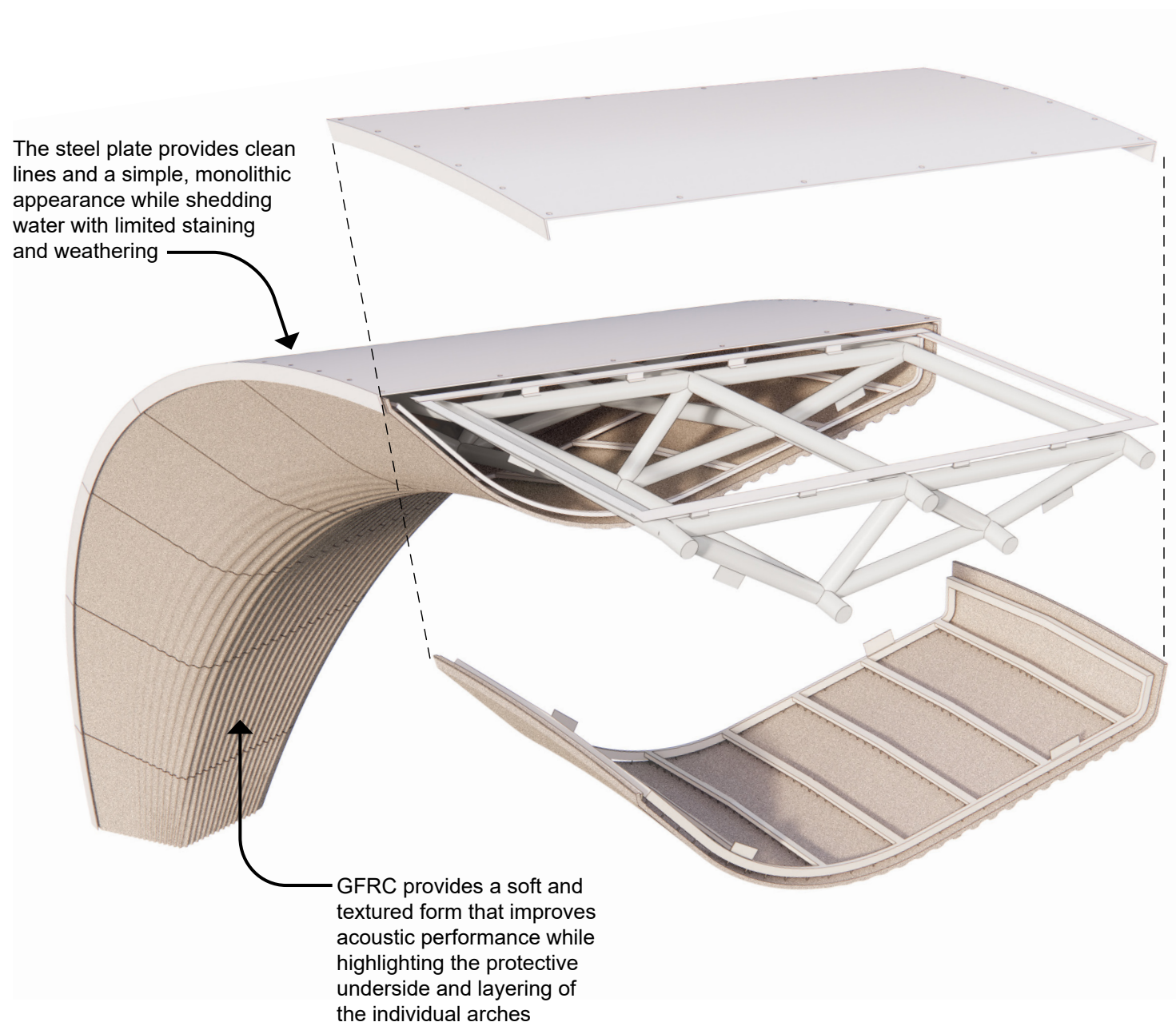
**KEY**



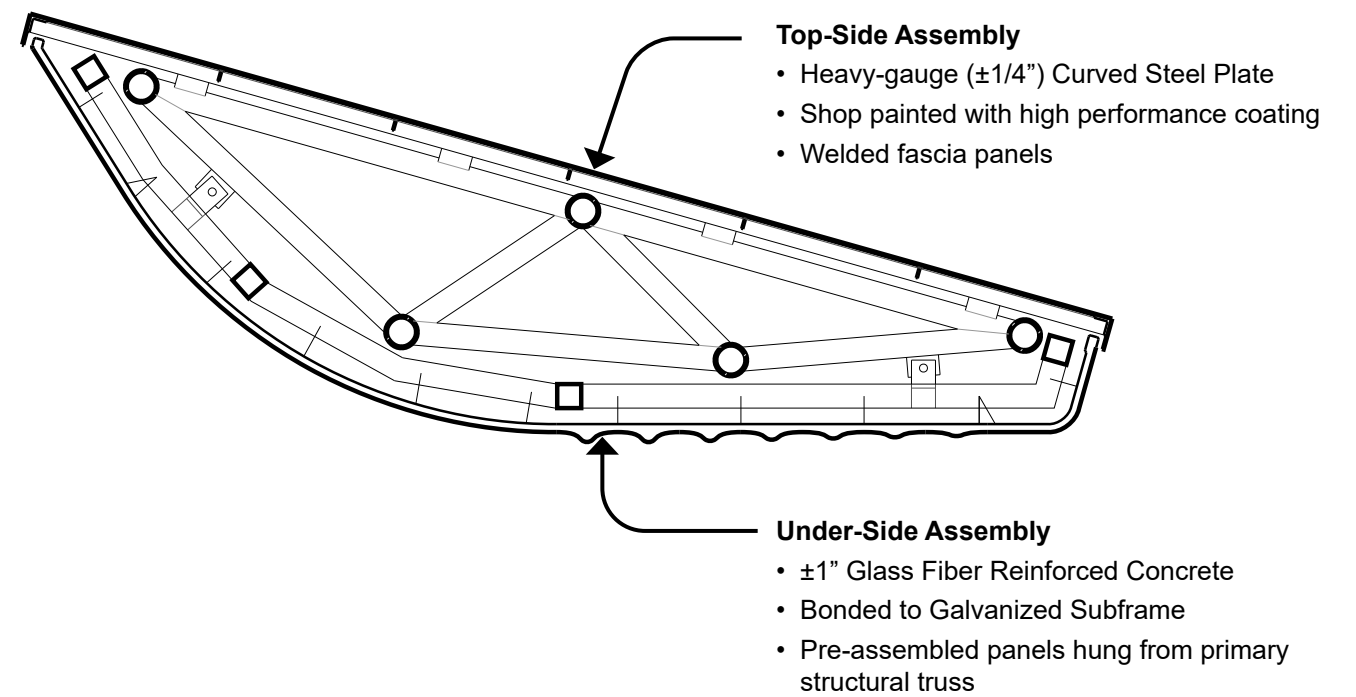








**EXPLODED ARCH ASSEMBLY**



**TYPICAL SECTION**

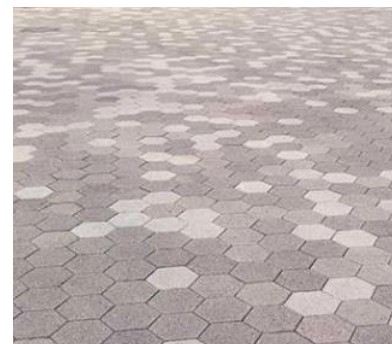


**GFRC PRE-CAST PANELS**  
INTEGRAL COLOR & CUSTOM RELIEF



**PAINTED AESS STEEL PLATE**  
WHITE HIGH PERFORMANCE COATING

**AMPHITHEATER STRUCTURE MATERIALS**



**CONCRETE HEX  
UNIT PAVER**



**PRECAST CONCRETE  
SEATWALLS**



**C.I.P. CONCRETE  
SITE WALLS**



**C.I.P. CONCRETE  
STAIRS**

**SITE MATERIALS**

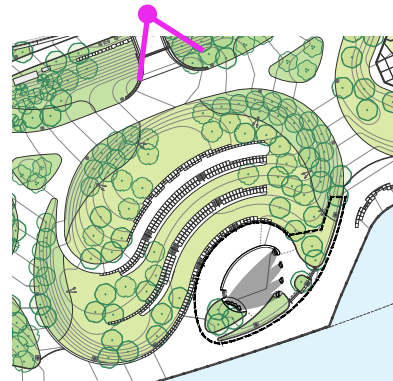
(FOR REFERENCE, NO CHANGE TO PREVIOUSLY APPROVED PALETTE)



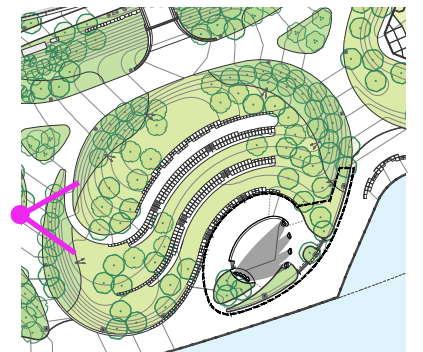
Model Photo: Aerial View from West



Model Photo: Aerial View from South



KEY



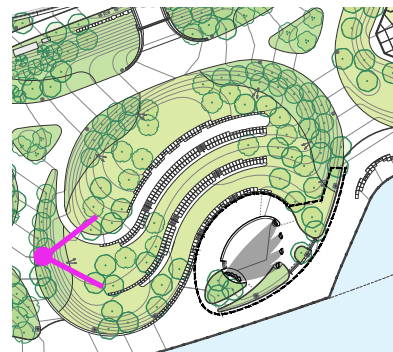
KEY



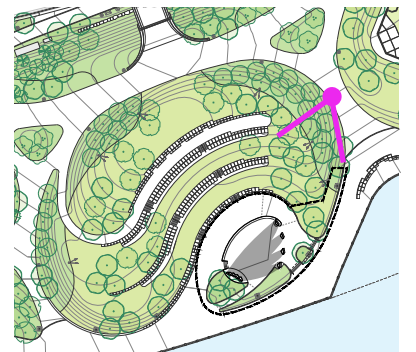
Model Photo: South Aerial



Model Photo: North Aerial



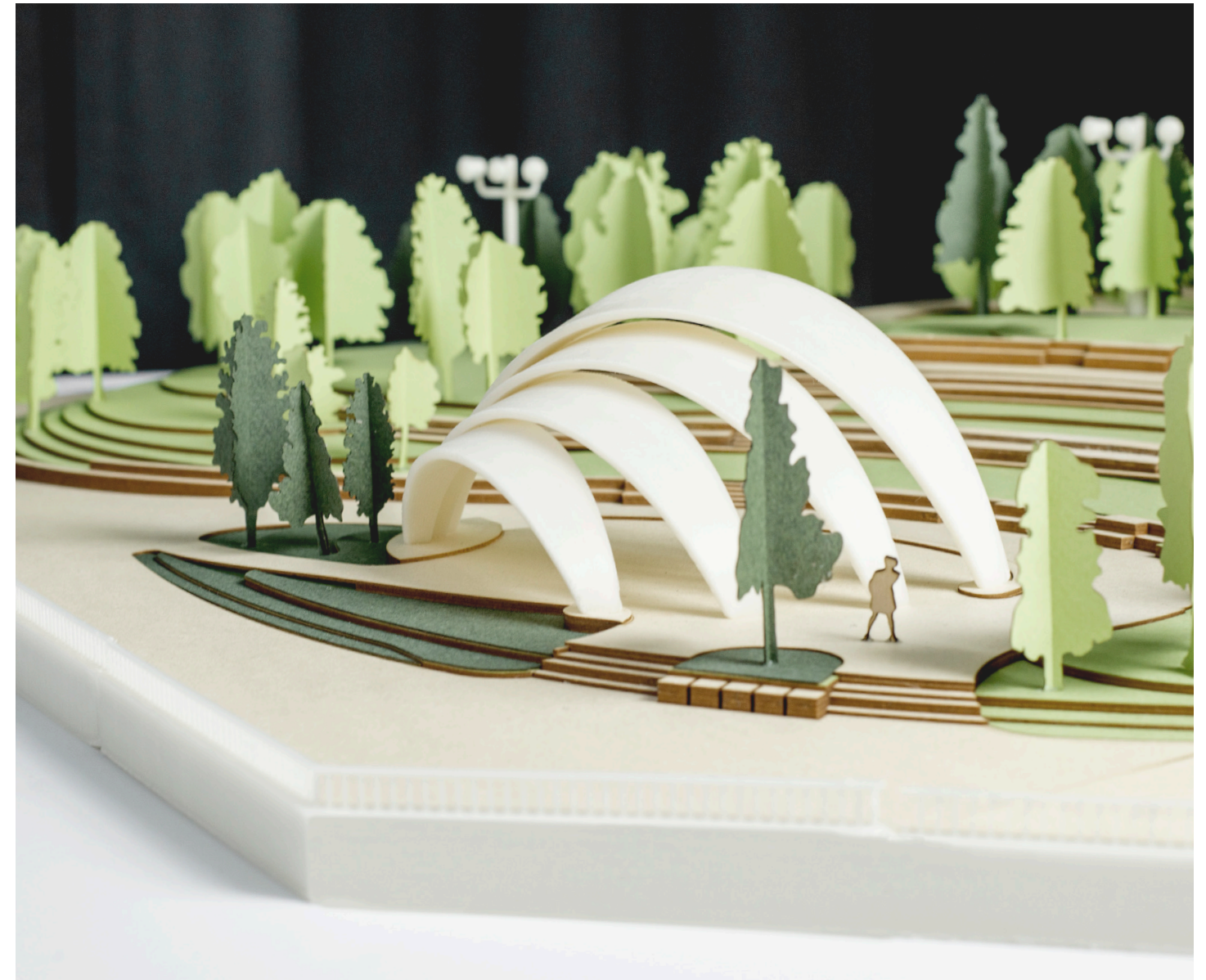
KEY



KEY



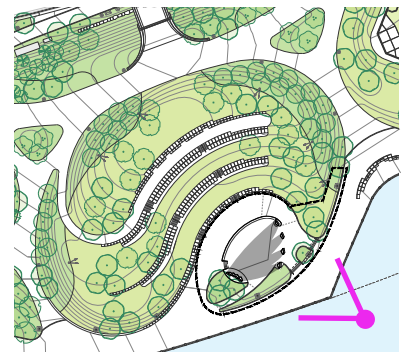
Model Photo: Southeast Aerial



Model Photo: View From Across Embayment



KEY

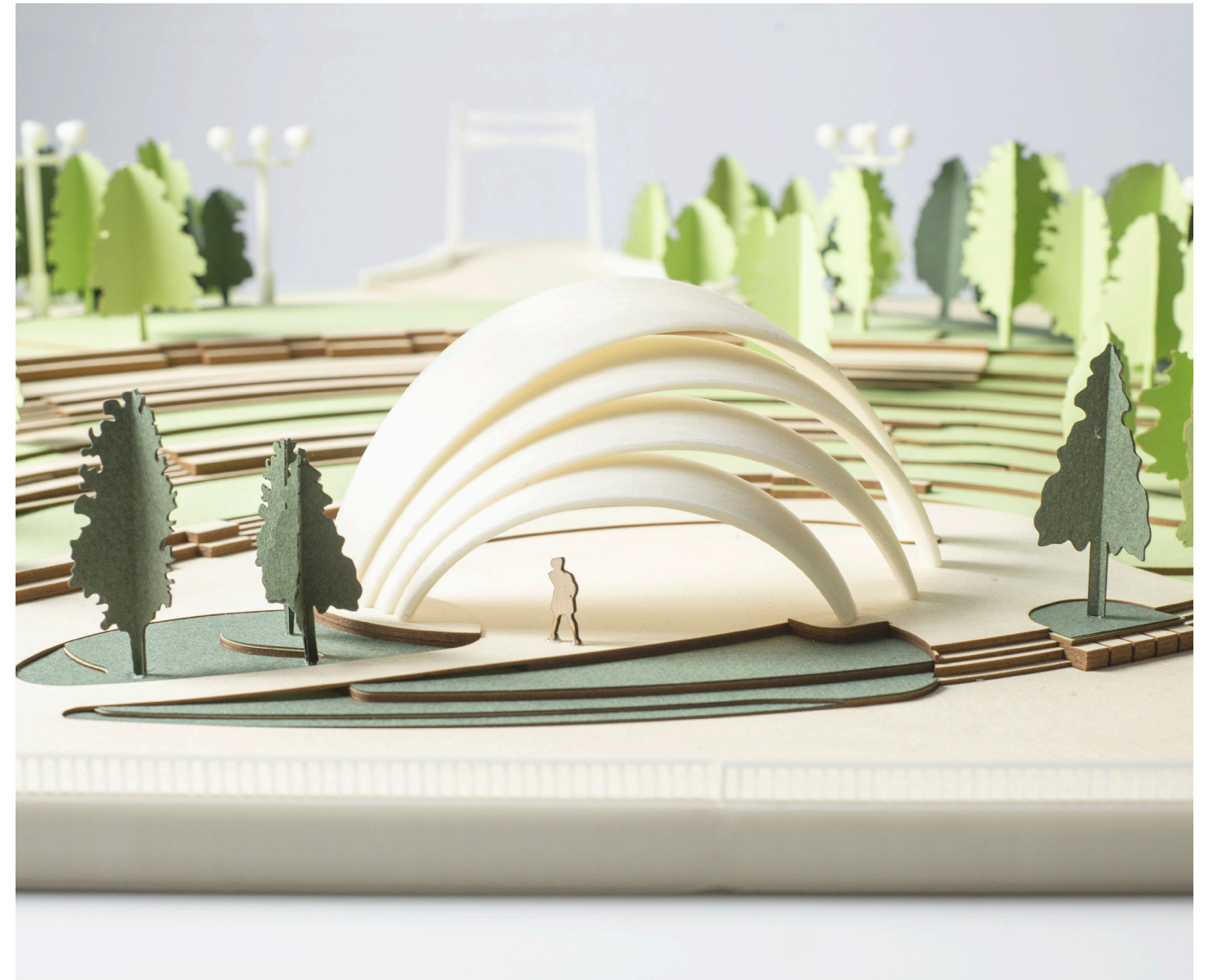


KEY





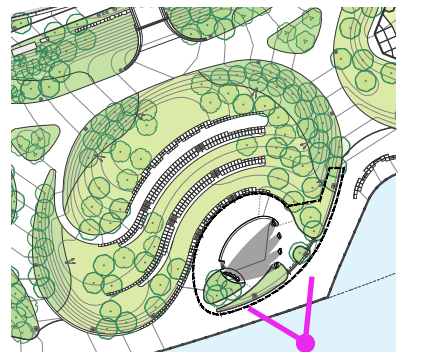
Model Photo: View from Corlears Hook Bridge



Model Photo: View from River



KEY



KEY