

East Side Coastal Resiliency Pre-Construction Update

CB6 Land Use Committee
Virtual Meeting
February 22, 2021



Mayor's Office of
Resiliency

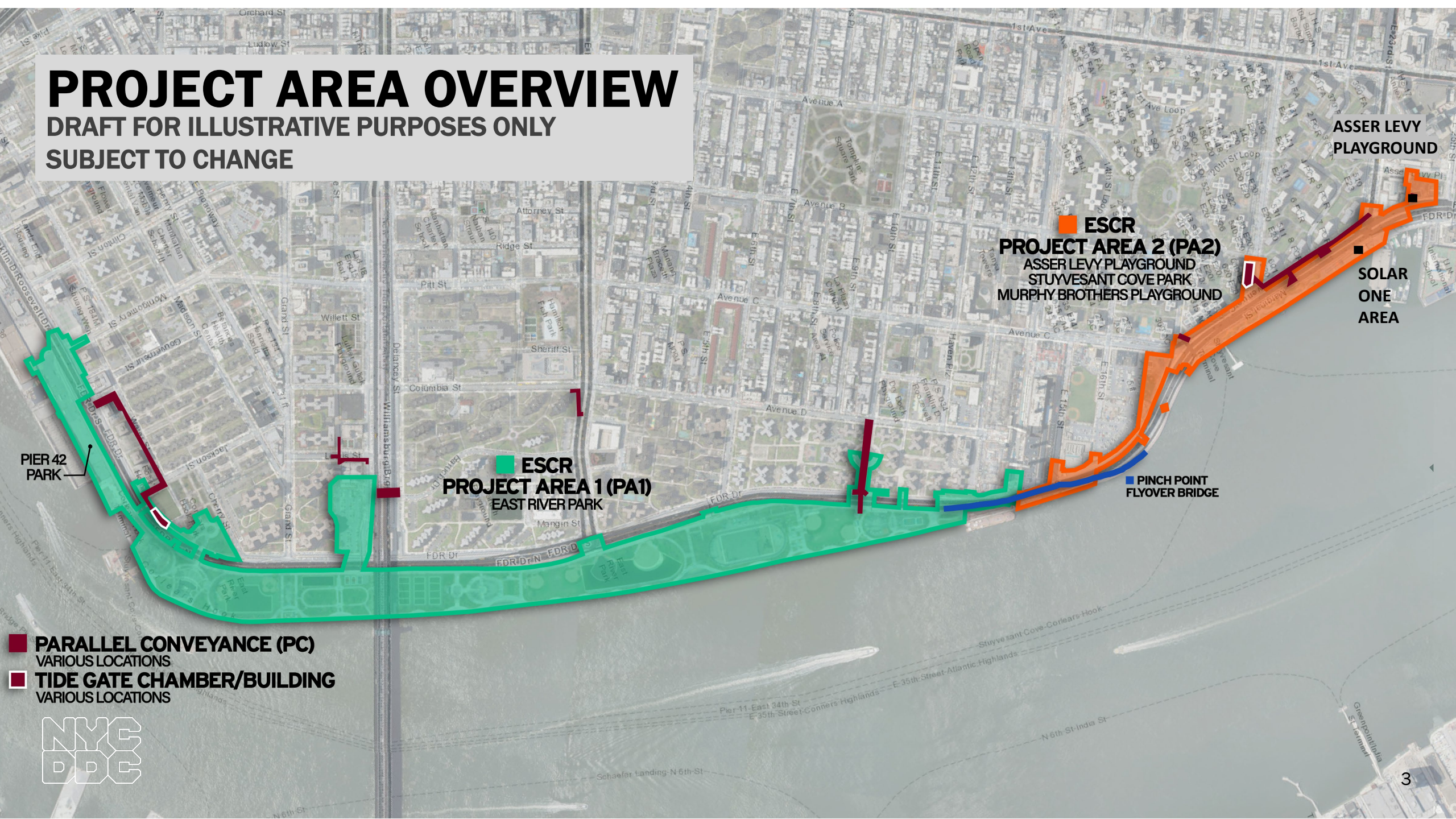
HIGHLIGHTS

- Pre-construction and Construction Phase Updates
- Construction Advisories
- What We've Heard

PROJECT AREA OVERVIEW

DRAFT FOR ILLUSTRATIVE PURPOSES ONLY

SUBJECT TO CHANGE



ASSER LEVY
PLAYGROUND

ESCR

PROJECT AREA 2 (PA2)
ASSER LEVY PLAYGROUND
STUYVESANT COVE PARK
MURPHY BROTHERS PLAYGROUND

SOLAR
ONE
AREA

PIER 42
PARK

ESCR
PROJECT AREA 1 (PA1)
EAST RIVER PARK

PINCH POINT
FLYOVER BRIDGE

PARALLEL CONVEYANCE (PC)

VARIOUS LOCATIONS

TIDE GATE CHAMBER/BUILDING

VARIOUS LOCATIONS



OVERVIEW OF CONTRACTS

Project Area 1 (PA1)

- bid opened 2/8/2021
- marginal impact to overall timeline
- East River Park open through Spring 2021

Project Area 2 (PA2)

- in construction on phase 1
 - Asser Levy Playground & Stuyvesant Cove Park Solar One Area

Parallel Conveyance (PC)

- release for bid in upcoming weeks bid opening early 2021
- open bid
- CCL onboard mid 2021

PA2 : ANTICIPATED ACTIVITIES

COMPLETED

- Asser Levy construction fencing
- Construction signage at Asser Levy & Solar One
- Air & Noise Monitoring equipment installation
- Asser Levy site amenity & tree removals
- Install rodent bait stations at various locations
- Greenway rerouting signage

IN PROGRESS

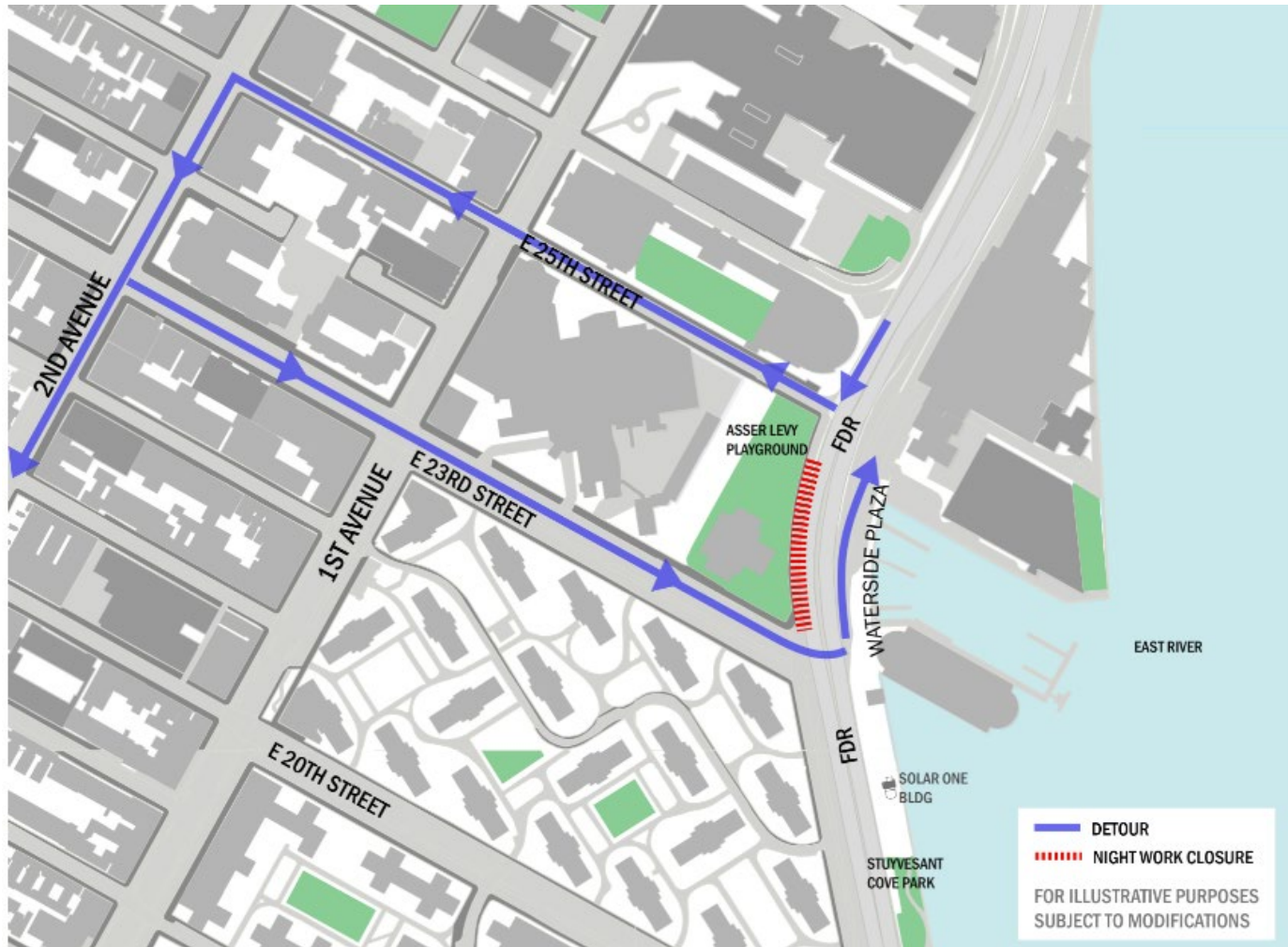
- Submittal Review
- Solar One construction fencing
- Continue test pits & demolition activities
- Night Work on FDR West Service Rd between E 23rd & E 25th St. - test pits and water main & sewer work
- Traffic detour & utility work E 23rd Street at East Service Road under FDR Drive
- Erosion Control

UPCOMING

- Sewer, manhole and catch basin work on the FDR east service road
- Preparation for wall footing adjacent to Solar One building in Stuyvesant Cove Park
- Utility relocation misc. areas



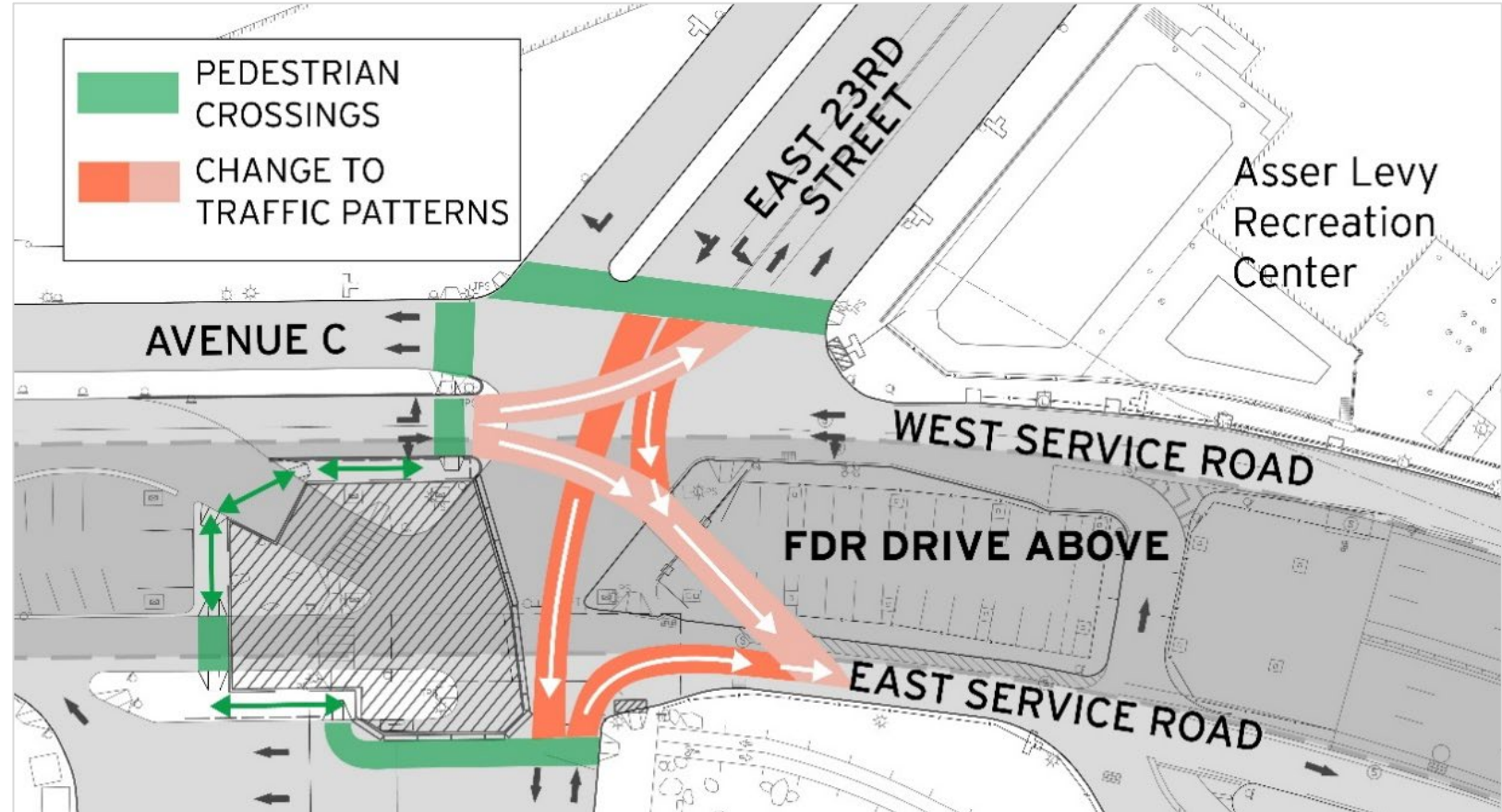
PA2: NIGHT WORK DETOUR | VEHICULAR | E 25TH ST



- West Service Road Traffic Detour Between E 23rd & E 25th Street
- Ongoing Mon-Fri, 10:00 pm to 5:00 am

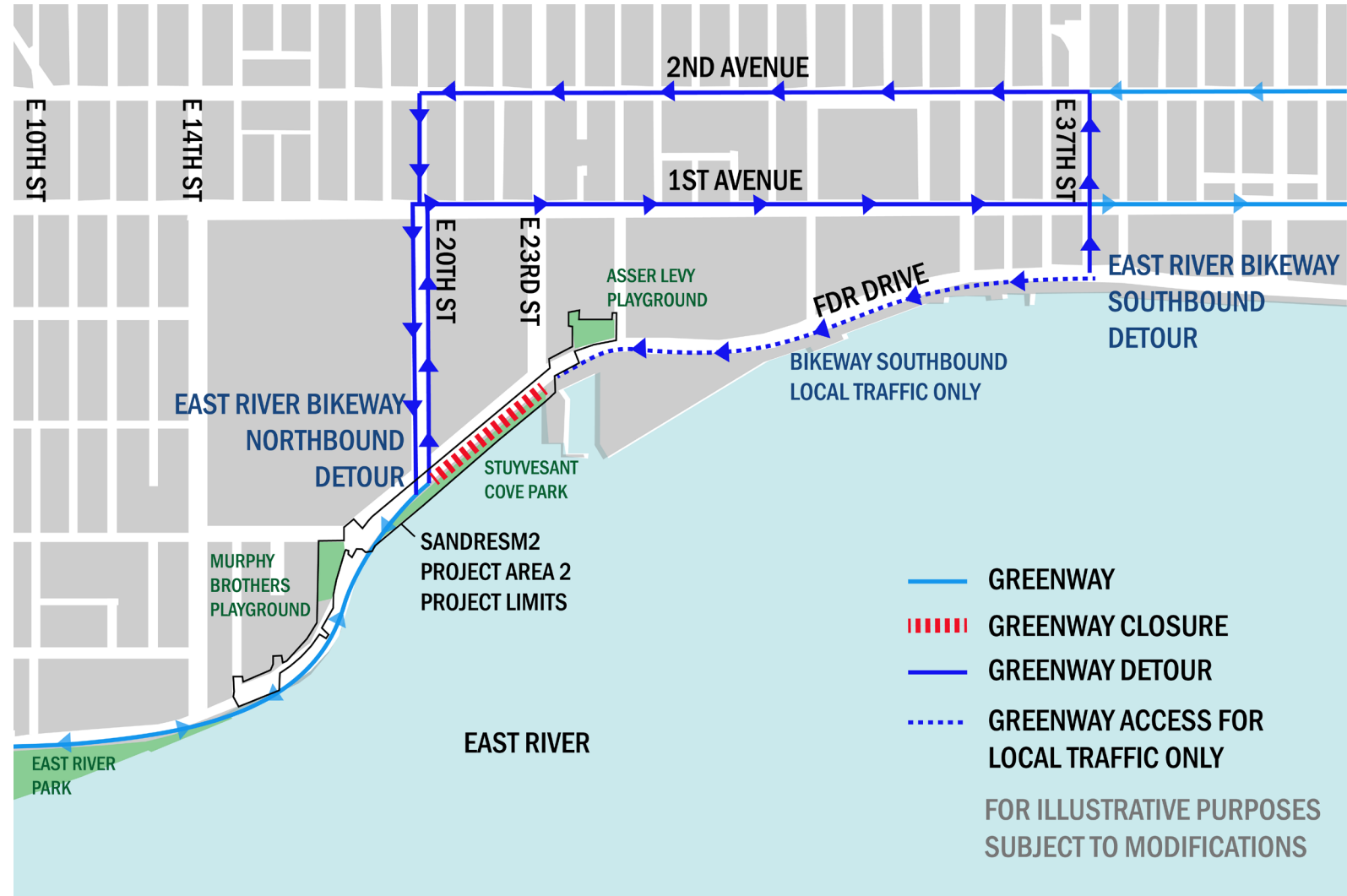
PA2: NEW TRAFFIC PATTERN CONTINUES | E 23RD ST

- New Traffic Pattern continues E23rd Street at East Service Road and under the FDR Drive
- Traffic Enforcement Agents & flaggers have been placed to assist with traffic & pedestrians
- Vehicles and pedestrians to follow all posted signs and instructions from traffic control flaggers while the detour is in effect
- Detour subject to change with construction activities
- Changes to detour will be communicated in advance of closures
- Future detours are actively being coordinated with DOT



PA2: GREENWAY DETOUR | E 20TH – E 23RD ST

- East River Greenway Closed between E20th & E23rd Street
- Bikeway detour, 24 hours/day, 7 days/week. Pedestrians to use local crosswalks and sidewalks.
- Detour is subject to change due to construction activities and upcoming Project Area 1 work
- Changes to detour will be communicated in advance of closures
- Future detours are actively being coordinated with DOT
- Avenue C Detour under FDR Drive from 18th to 20th Street is under ongoing coordination with DOT, DDC and the contractor



PA2: PEDESTRIAN DETOUR | STUY COVE PARK

- **Stuyvesant Cove Park Detour: Between E 20th & E 23rd Street**
- Change to Pedestrian circulation in Stuyvesant Cove Park between East 20th and East 23rd Street.
- This change will be in place 24 hours/day, 7 days/week.
- Pedestrians will continue to have waterfront access in Stuyvesant Cove Park as shown.
- Detour is subject to change due to construction activities
- Changes to detour will be communicated in advance of closures
- Future detours are actively being coordinated with DOT



WHAT WE'VE HEARD

- **Section 3 and M/WBE:** coordination with Bui Studios and DDC Office of Diversity and Industry Relations (ODIR) ongoing. This includes both outreach and monitoring. Planning smaller outreach events for 2021.
- **Environmental Monitoring:** quarterly reporting (at a minimum); DDC will report exceedances/findings to the public after investigation as typical for DDC projects. No exceedances to date.
- **Avenue C Detour under FDR Drive from 18th to 20th Street:** under ongoing coordination with DOT, DDC and the contractor
- **Project Schedule/timeline:** under development



East Side Coastal Resiliency

The East Side Coastal Resiliency (ESCR) project is a coastal protection initiative, jointly funded by the City of New York and the federal government, aimed at reducing flood risk due to coastal storms and sea level rise on Manhattan's East Side from East 25th Street to Montgomery Street. The boundaries of this project correspond with the natural "pinch-points" in the 100-year floodplain: areas where the land is higher along the coastline, making it easier to close the system off from water entering from the north and south. The project design integrates flood protection into the community fabric, improving waterfront open spaces and access, rather than walling off the neighborhood. Construction on the East Side Coastal Resiliency project will begin in Fall 2020 and continue through 2025.

Construction Progress

Construction Notices
View our most recent community presentations for updates as we prepare for upcoming construction activities.

Resiliency & Flood Protection

Resiliency and Flood Protection

Learn more about ESCR's resiliency and the forward-thinking flood protection measures being implemented to protect 110,000 New Yorkers from the impacts of climate change.

Project Background & Goals

Project Background and Goals

Read about the history and background of ESCR, and the goals driving this technically complex infrastructure project.

Project Design

Project Design

From flood protection measures to bike lanes and ball fields, the ESCR project is improving open spaces and access in the Lower East Side while strengthening the city's coastline.

NEED MORE INFORMATION?

VISIT US AT:
www.nyc.gov/escr