

East Side Coastal Resiliency Pre-Construction Update

CB6 Land Use & Waterfront
Committee Virtual Meeting
January 25, 2021



Mayor's Office of
Resiliency

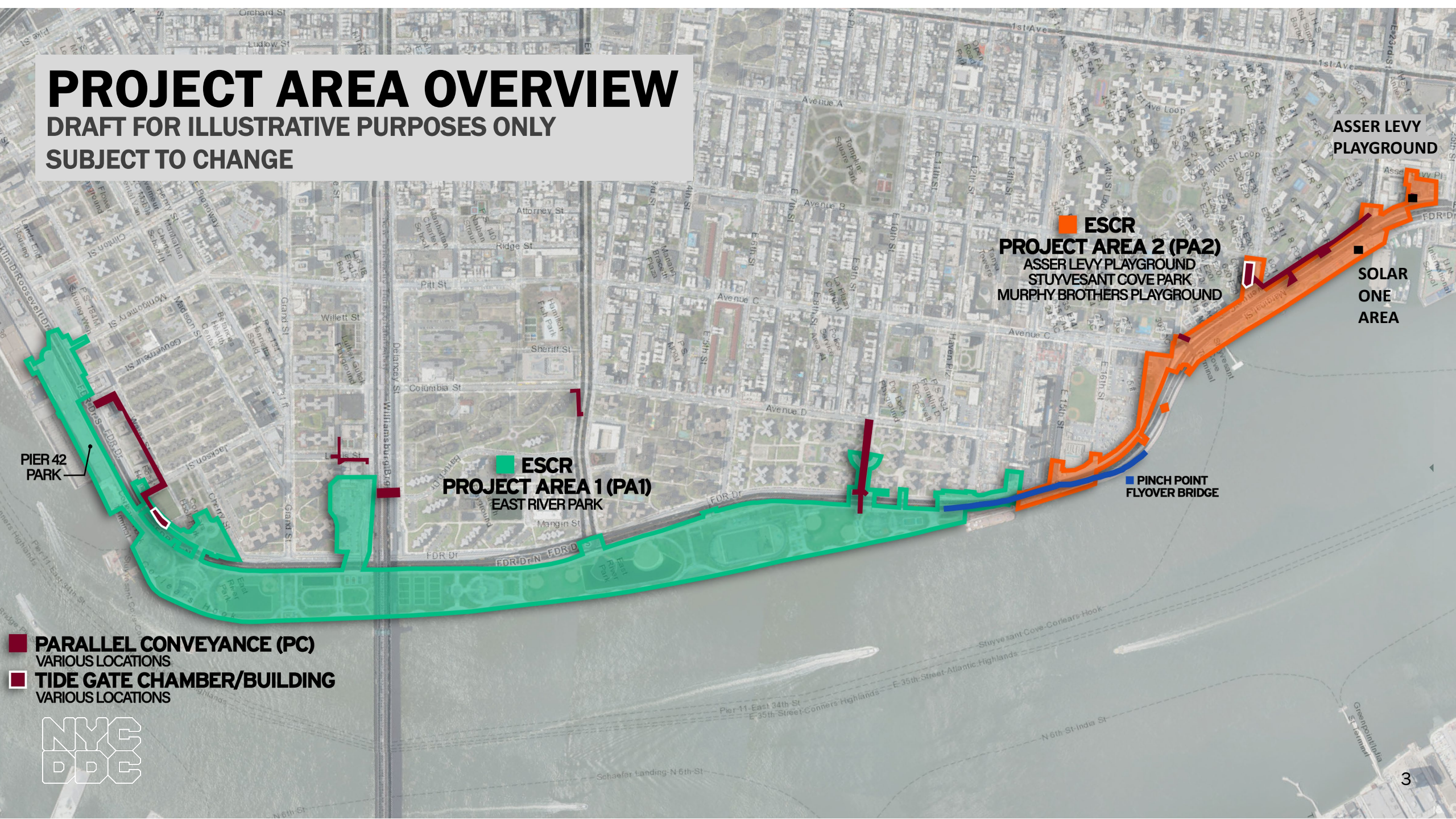
HIGHLIGHTS

- Pre-construction and Construction Phase Updates
 - Construction Impacts
 - Bicycle & Pedestrian Access
 - Communications & Signage
- Construction Mitigation / Environmental Monitoring
- What We've Heard
 - Compost
 - Emergency Access
 - Section 3 M/WBE

PROJECT AREA OVERVIEW

DRAFT FOR ILLUSTRATIVE PURPOSES ONLY

SUBJECT TO CHANGE



ASSER LEVY
PLAYGROUND

ESCR

PROJECT AREA 2 (PA2)
ASSER LEVY PLAYGROUND
STUYVESANT COVE PARK
MURPHY BROTHERS PLAYGROUND

SOLAR
ONE
AREA

PIER 42
PARK

ESCR
PROJECT AREA 1 (PA1)
EAST RIVER PARK

PINCH POINT
FLYOVER BRIDGE

PARALLEL CONVEYANCE (PC)

VARIOUS LOCATIONS

TIDE GATE CHAMBER/BUILDING

VARIOUS LOCATIONS



OVERVIEW OF CONTRACTS

Project Area 1 (PA1)

- bid opening extended to address questions from construction industry
- marginal impact to overall timeline
- East River Park open through Spring 2021

Project Area 2 (PA2)

- received NTP November 16, 2020
- in mobilization and site-prep phase

Parallel Conveyance (PC)

- bid opening early 2021
- open bid – no prequal list
- CCL onboard mid 2021

PA2 : ANTICIPATED ACTIVITIES

COMPLETED

- Asser Levy construction fencing
- Construction signage at Asser Levy & Solar One
- Air & Noise Monitoring equipment installation
- Asser Levy site amenity & tree removals
- Install rodent bait stations at various locations

IN PROGRESS

- Submittal Review: Environmental, Construction Plans, Noise & Air
- Solar One construction fencing
- Greenway rerouting signage
- Continue test pits & demolition activities
- Engineers Field Office

UPCOMING

- Night Work on FDR west service road between E 23rd & E 25th St. - test pits and water main & sewer work
- Excavate sidewalk & pedestrian walkway on the north side of E 23rd Street, and median at intersection
- Sewer work on the FDR east service road
- Utility relocation misc. areas

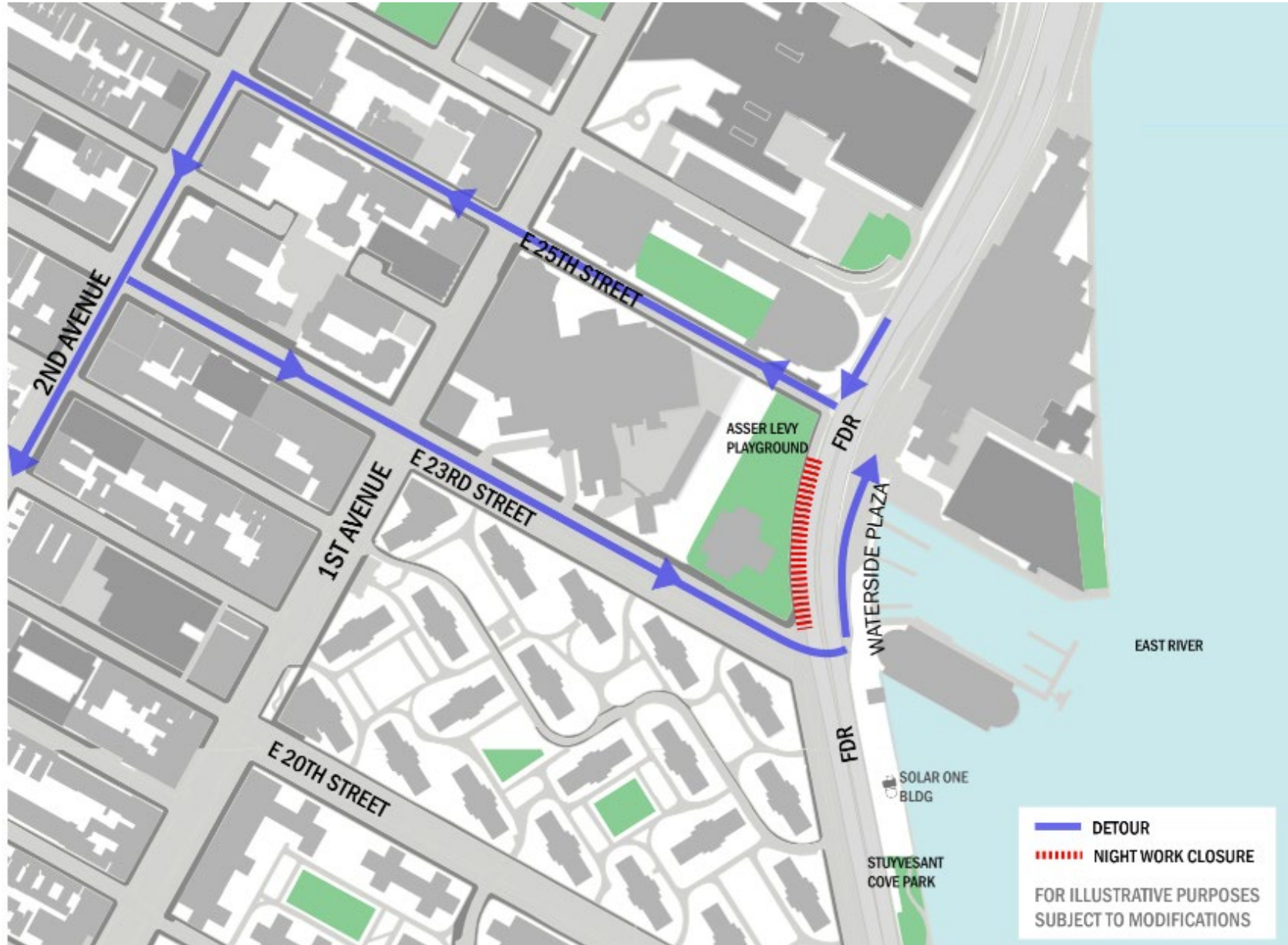


PA2: CONSTRUCTION MAP ASSER LEVY

- Asser Levy Playground closed 11/2020.
- Handball courts and track area remain open.
- Street Right-of-Way (ROW) areas are accessible to the contractor.



PA2: MPT | NIGHT WORK DETOUR

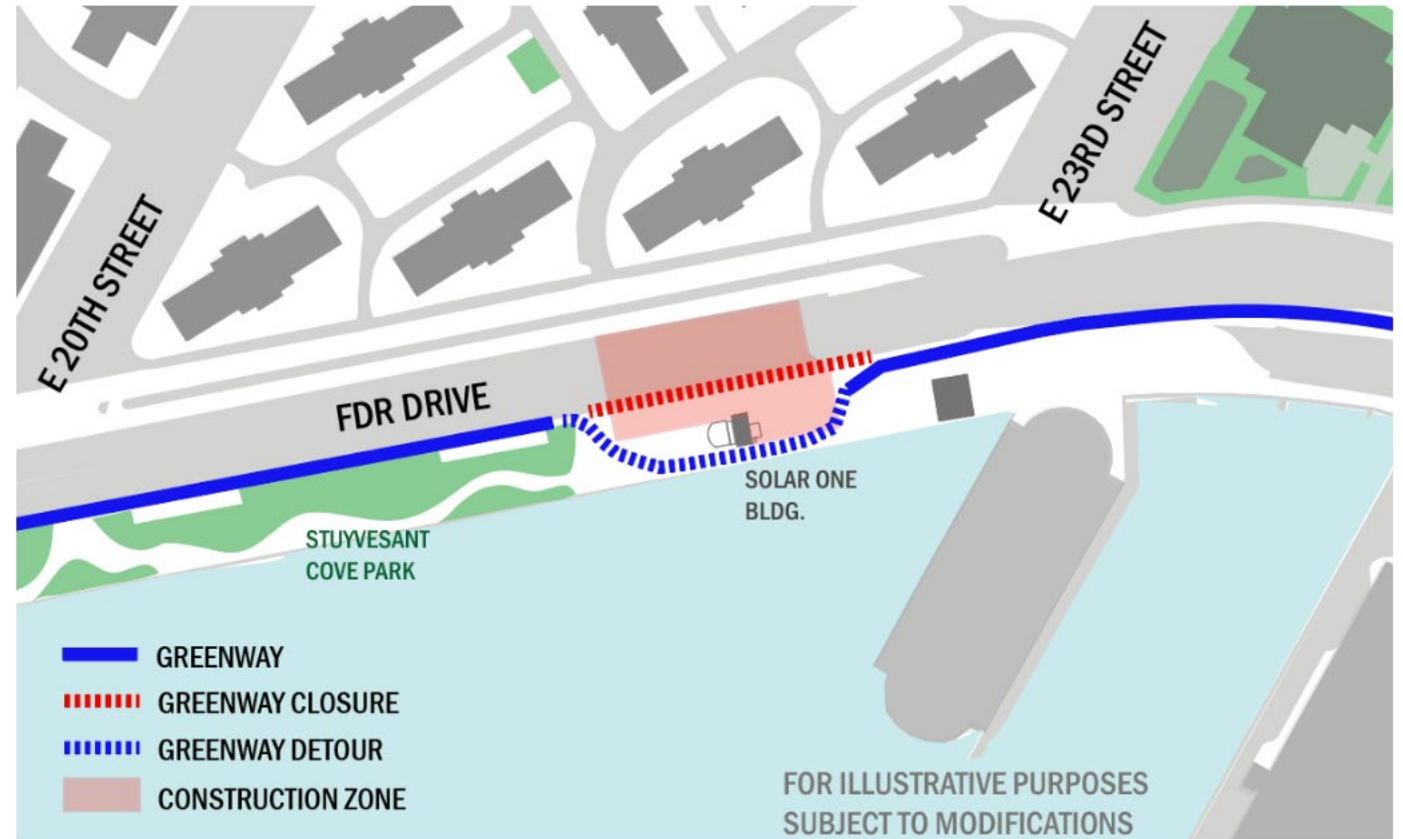


PA2: CONSTRUCTION IMPACTS

- Traffic closures & detours
- Noise (All work to be performed within allowed noise levels as set by NYC)
- Greenway & Bike lane detours
- All Transportation Services to be maintained
- DSNY collections will not be impacted
- Access to buildings and schools will be maintained all times
- Park areas (outside of construction zones) will be open for use
- Any changes will be promptly shared with the community in timely manner
- Coordination with all City, State Agencies, NYPD, FDNY, EMS will be continuous

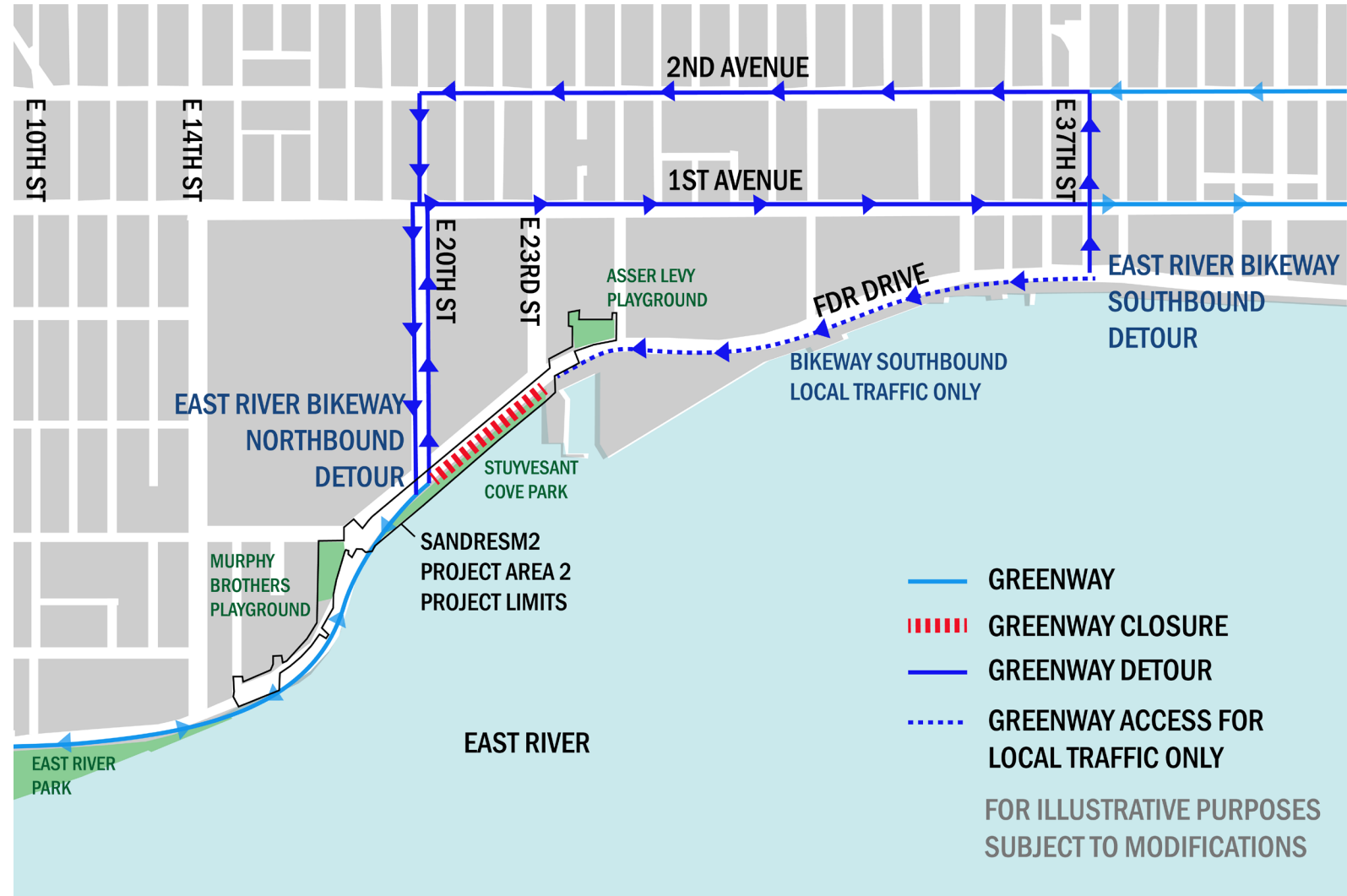
PA2: PEDESTRIAN & BICYCLE ACCESS | UPCOMING

- **Greenway detours at Solar One** will occur adjacent to the waterfront
- This detour will remain in place for several weeks until construction activities at Solar One prohibit safe pedestrian access
- Bicyclists and pedestrians to follow shared zone signage



PA2: PEDESTRIAN & BICYCLE ACCESS | UPCOMING

- **East River Greenway Closure between E20th & E23rd Street**
- Bikeway detour, 24 hours/day, 7 days/week. Pedestrians to use local crosswalks and sidewalks.
- Detour is subject to change once Project Area 1 begins and other phases of Project Area 2
- Changes to detour will be communicated in advance of closures
- Future detours are actively being coordinated with DOT
- **Avenue C Detour under FDR Drive from 18th to 20th Street** is under ongoing coordination with DOT and the contractor



SIGNAGE

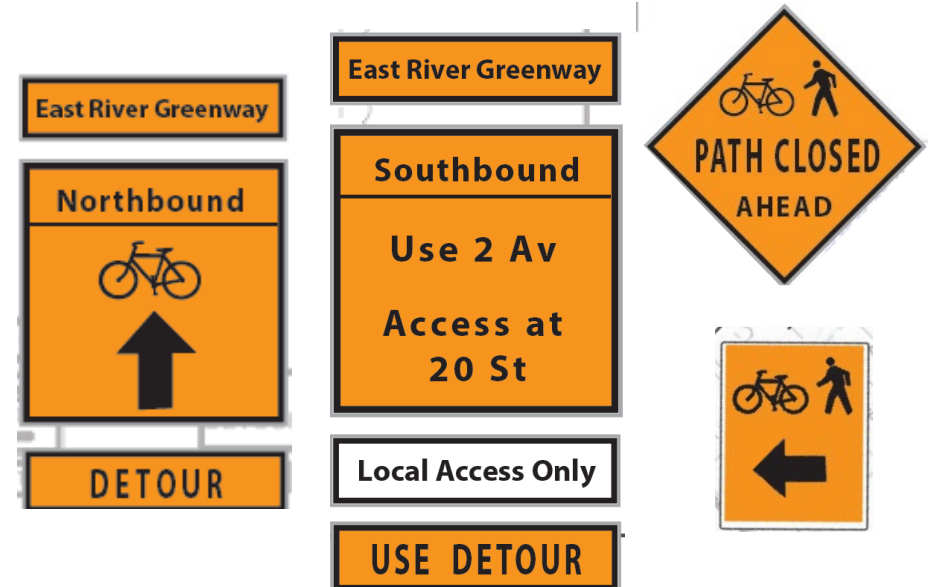
- site signage



Typical DOT signage for shared use zones



Typical DOT signage for detour:



COMMUNICATIONS

- updated website contact page
- current advisory on Greenway detour

The screenshot shows the 'Contact' page of the NYC East Side Coastal Resiliency Project website. The header includes the NYC logo, the project name, and navigation links: Home, About, Project Updates, Community Engagement, and Contact. A search bar is also present. The main content area is titled 'Contact' and includes a 'Work With Us' section with social media links and a 'Print' button. Below this, there is an 'Online Inquiry' section with a description of the inquiry form and a 'Submit an Inquiry' button. The 'Newsletters and Project Updates' section offers a 'Sign Up' button for project updates and newsletters. Finally, the 'Printed Notifications' section provides a 'Reach Out' button for those without internet access.



Community Advisory

East Side Coastal Resiliency
www.nyc.gov/escr

EAST SIDE
COASTAL
RESILIENCY

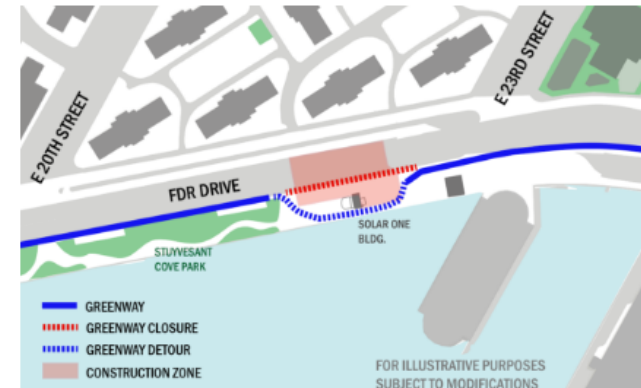
Project # SANDRESM2 | Borough: Manhattan | Issue Date: 1/05/2021

The East Side Coastal Resiliency Project is an initiative to provide long-term flood protection on the Lower East Side.

East River Greenway Detour: Between E 20th & E 23rd Street

Starting the week of January 4, 2021

Flood wall construction operations adjacent to the Solar One facility will necessitate the following Greenway detour, 24 hours/day, 7 days/week. Adhere to posted Shared Zone signage.



If you have questions, or would like to learn more about the East Side Coastal Resiliency Project, please contact your Community Construction Liaison (CCL):

Nadine Harris
Phone: 347-572-3057 Email: ESCRCCL2@ddccr.com
Inquiry Tool: www.nyc.gov/escr/contact

PLEASE NOTE: Due to unforeseen conditions (weather, field conditions, etc.) it may become necessary to change some scheduled work locations and operations.

NYC DDC Department of
Design and
Construction
Office of Community Outreach & Notification



CONSTRUCTION MITIGATION & ENVIRONMENTAL MONITORING

CONSTRUCTION PLANS

- **Construction Health and Safety Plan (CHASP):**

- construction worker site safety, personal protective equipment, emergency response procedures, etc.
- incorporates required COVID rules and guidelines

- **Noise and Air Quality Monitoring Plan:**

- Construction Noise & Air Monitoring Plan in compliance with the NYC Noise Control Code and Air Quality Laws & National Ambient Air Quality Standards
- Sets monitoring locations, reporting, thresholds for exceedances, maintenance protocols

- **Dust Control Plan:**

- in compliance with NYC codes and DEPs Construction Dust Rules to mitigate the release of dust from the construction site, use of best available control technologies (i.e., diesel particulate filters, newer equipment, ultra-low sulfur diesel), minimize diesel particulate emissions, watering plan

- **Vibration Control:**

- Vibration Monitoring will be implemented during construction to ensure that the vibration produced by construction activities are within safe limits to nearby structures

- **Soil:**

- Soil mitigation during construction will be implemented in accordance with a project Remedial Action Plan (RAP), which will be approved by DEP

CONSTRUCTION MITIGATION | AIR

dust reduction strategies:

- Dust Control Plan and Implement construction-related dust reduction measures required by DEP's Construction Dust Rules
 - Ultra-Low Sulfur Diesel (ULSD) fuel
 - Best Available Technology for reducing diesel particulate emissions for non-road diesel engines
 - Use of diesel engines must be minimized
 - Truck idle time must be restricted to three minutes
 - Maximize use of barging for deliveries
 - Trucks hauling loose material must be equipped with tight-fitting tailgates and their loads securely covered
 - Water sprays must be used for all excavation and transfer of soils
 - Loose materials (e.g., on-site storage piles) must be watered or covered
 - Control via wet down areas

monitoring:

- Monitors will move based on location of construction
- Airborne Dust
- Meteorological data – pressure, humidity, precipitation, wind direction, temperature, etc.
- Limits set by EPA and National Ambient Air Quality Standards

CONSTRUCTION MITIGATION | NOISE

noise reduction strategies:

- Replace diesel/gas powered equipment as early as possible with electric equipment
- Equipment must be properly maintained
- Impact cushion required for piles driven by impact hammer
- Pile installation, where feasible and practicable, limited to between 7 AM and 6 PM.
- Maximize use of barging for deliveries of construction materials/fill rather than trucks
- Selecting quieter models for cranes, generators, compressors and lifts subject to availability
- Minimize truck back-ups
- Trucks cannot idle more than 3 minutes

monitoring:

- to determine whether construction-generated noise levels do/do not exceed the applicable limits
- Must meet sound standards specified in NYC Noise Control Code

CONSTRUCTION MITIGATION | SOILS/EXCAVATION

- Procedures in place:
 - Soil Core Sampling to depth of excavation to determine use and disposal
 - On-site inspectors and environmental specialists from contractor and PMCM
- Material Handling Plan (MHP) prior to excavation
 - Inconsistencies in soil sampling will initiate procedures
- Soil mitigation during construction will be implemented in accordance with a project Remedial Action Plan (RAP), which will be approved by DEP

CONSTRUCTION MITIGATION | MONITORING

obligations

- Noise and air quality commitments/mitigation made in FEIS and Record of Decision issued for ESCR
- **monitoring plans:** approved by NYC DDC & PMCM
- **independent environmental consultants:**
 - Contractor must retain an independent environmental consultant to obtain permits and perform soil and water sampling
 - PMCM oversight of construction activities by on-site inspectors and environmental specialist
- **alerts:** air quality and vibration alerts sent automatically if thresholds are exceeded to contractor, PMCM, environmental specialists
- **investigation & mitigation:** work will halt upon exceedance for investigation and mitigation actions

reporting

- DDC will report exceedances/findings to the public after investigation as typical for DDC projects
- At minimum **quarterly summary reports:** coordination ongoing with contractor's environmental specialist

WHAT WE'VE HEARD

- **Compost relocation:** DSNY update
- **Emergency access:** coordination with FDNY, NYPD, etc. ongoing from design phase into the construction phase including FDNY site meetings to review changes roadway access
- **Construction staging & equipment**
- **On-site bulletins:** under review
- **Section 3 and M/WBE:** coordination with Bui Studios and DDC Office of Diversity and Industry Relations (ODIR) ongoing. This includes both outreach and monitoring. Planning smaller outreach events for 2021.
- **Pier 42:** current work within East River Park is related to the EDC Pier 42 project, ESCR work has not begun within East River Park



East Side Coastal Resiliency

The East Side Coastal Resiliency (ESCR) Project is a coastal protection initiative, jointly funded by the City of New York and the federal government, aimed at reducing flood risk due to coastal storms and sea level rise on Manhattan's East Side from East 25th Street to Montgomery Street. The boundaries of this project correspond with the natural "pinch-points" in the 100-year floodplain: areas where the land is higher along the coastline, making it easier to close the system off from water entering from the north and south. The project design integrates flood protection into the community fabric, improving waterfront open spaces and access, rather than walling off the neighborhood. Construction on the East Side Coastal Resiliency project will begin in Fall 2020 and continue through 2025.

Construction Progress

Construction Notices
View our most recent community presentations for updates as we prepare for upcoming construction activities.

Resiliency & Flood Protection

Resiliency and Flood Protection

Learn more about ESCR's resiliency and the forward-thinking flood protection measures being implemented to protect 110,000 New Yorkers from the impacts of climate change.

Project Background & Goals

Project Background and Goals

Read about the history and background of ESCR, and the goals driving this technically complex infrastructure project.

Project Design

Project Design

From flood protection measures to bike lanes and ball fields, the ESCR project is improving open spaces and access in the Lower East Side while strengthening the city's coastline.

NEED MORE INFORMATION?

VISIT US AT:
www.nyc.gov/escr