

Construction Bulletin

East Side Coastal Resiliency
www.nyc.gov/escr



PROJECT AREA 2 – Two Week Look Ahead

1/10/22 - 1/21/22

PROJECT#: SANDRESM2 | BOROUGH: MANHATTAN | DATE ISSUED: 1/07/21

The following is an anticipated work schedule for the upcoming week. **However, due to unforeseen field and weather conditions**, it may become necessary to change some scheduled work locations, operations, and dates.

Map Key	Date	Work Hours	Location	Operation
1	1/10/22–1/21/22	7:00 am to 3:30 pm	Stuyvesant Cove Park: E 20 Street to E 23 Street	Greenway closure continues Pile installation for the floodwall ongoing Floodwall construction ongoing
2	1/10/22–1/21/22	7:00 am to 3:30 pm	E 23 Street at East Service Road and under the FDR Dr. Adjacent to BP Gas Station	* Modified Traffic Pattern at E. 23rd Street under the FDR Dr. ECS & ConEdison utility work ongoing Pile installation for the floodwall
3	1/10/22–1/21/22	7:00 am to 3:30 pm	West Service Rd between E 25 Street and E 23 Street	Pile installation for the floodwall ongoing
4	1/10/22–1/21/22	7:00 am to 3:30 pm	Asser Levy Playground	Park reconstruction in-progress Floodwall construction ongoing
5	1/10/22–1/21/22	7:00 am to 3:30 pm	E 15th Street between Ave C and FDR Dr. within Con Edison Facility	Sewer reconstruction/coordination for sub-surface investigation
6	1/10/22–1/21/22	7:00 am to 3:30 pm	Exit 7 Ramp FDR Dr. left lane at Avenue C	**Modified Traffic Pattern at FDR Ramp continues Sewer and catch basin installation

REMINDERS: *Modified Traffic Pattern detour at E 23rd Street under the FDR Dr. continues

Utility work by ConEdison, ECS, etc. may extend work hours and/or occur on weekends to facilitate utility relocations, maintenance work or inspection services

For More Information: Contact **Nadine Harris** at (347) 572-3057, ESCRCL2@ddccr.com, or via web inquiry: www.nyc.gov/escr/contact

During non-construction hours, please contact the New York City Government Services and Information Hotline at **311**.

EAST SIDE
COASTAL
RESILIENCY



Office of Community Outreach & Notification

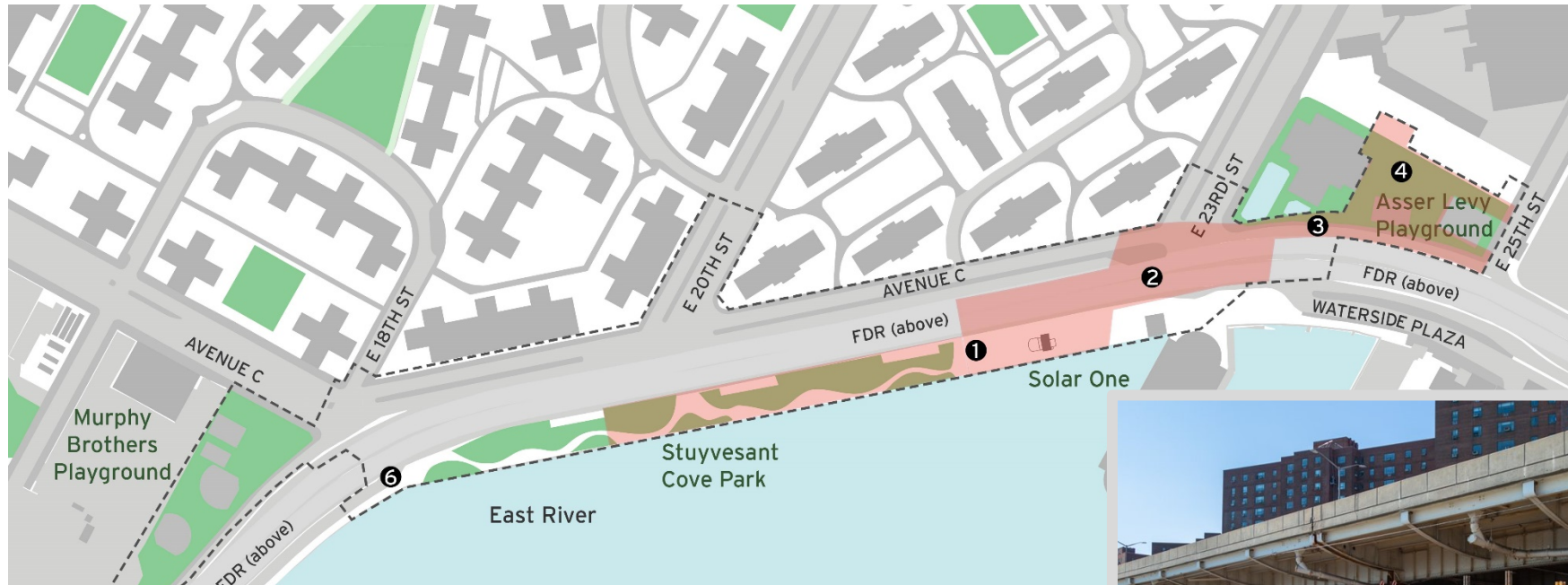


Construction Bulletin

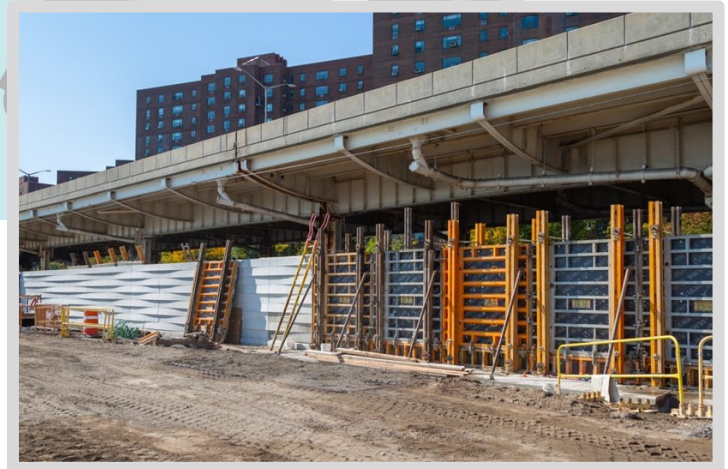
East Side Coastal Resiliency
www.nyc.gov/escr



Numbers on the map below show the approximate location of the construction operations described on the first page. For more detailed information, see Advisories released for each detour/traffic pattern change posted on the website: www.nyc.gov/escr/notices



Operation 1:
Ongoing floodwall construction in Stuyvesant Cove Park.



For More Information: Contact **Nadine Harris** at (347) 572-3057, ESCRCL2@ddccr.com, or via web inquiry: www.nyc.gov/escr/contact

During non-construction hours, please contact the New York City Government Services and Information Hotline at **311**.

EAST SIDE
COASTAL
RESILIENCY

NYC
BDC
Department of
Design and
Construction

Office of Community Outreach & Notification

NYC
Mayor's Office of
Resiliency

NYC
Parks

NEW YORK CITY
DOT

NYC
Environmental
Protection