

PROJECT AREA 2 – Two Week Look Ahead

11/22/21 - 12/03/21 **Thursday and Friday, November 25 - 26, 2021: No construction activities in observance of the Thanksgiving Holiday.**

PROJECT#: SANDRESM2 | BOROUGH: MANHATTAN | DATE ISSUED: 11/19/21

The following is an anticipated work schedule for the upcoming week. **However, due to unforeseen field and weather conditions,** it may become necessary to change some scheduled work locations, operations, and dates.

Map Key	Date	Work Hours	Location	Operation
1	11/22/21–12/03/21	7:00 am to 3:30 pm	Stuyvesant Cove Park: E 20 Street up to and including Solar One area	Greenway closure continues. Pile installation for the floodwall ongoing. Floodwall foundation, formwork, and construction of wall sections. Preparation of parkland for flood gate construction.
2	11/22/21–12/03/21	7:00 am to 3:30 pm	E 23 Street at East Service Road and under the FDR Dr.	* Modified Traffic Pattern shift from north to south at E. 23rd Street under the FDR Dr. ECS & ConEdison utility work ongoing.
3	11/22/21–12/03/21	7:00 am to 3:30 pm	West Service Rd between E 25 Street and E 23 Street	Pile installation for the floodwall ongoing.
4	11/22/21–12/03/21	7:00 am to 3:30 pm	Asser Levy Playground	Pile installation for the floodwall ongoing. Curb installation ongoing and begin park sidewalk. Underground plumbing and electrical work.
5	11/22/21–12/03/21	7:00 am to 3:30 pm	E 20 Street and Avenue C Intersection	ConEdison utility work continues.
6	11/22/21–12/03/21	7:00 am to 3:30 pm	Exit 7 Ramp FDR Dr. left lane at Avenue C	**Modified Traffic Pattern at FDR Ramp continues Sewer and Catch basin installations

REMINDEES: *Modified Traffic Pattern at E 23rd Street under the FDR Dr. **Modified Traffic Pattern at FDR Exit 7 Ramp continues.

Utility work by ConEdison, ECS, etc. may extend work hours and/or occur on weekends to facilitate utility relocations, maintenance work or inspection services.

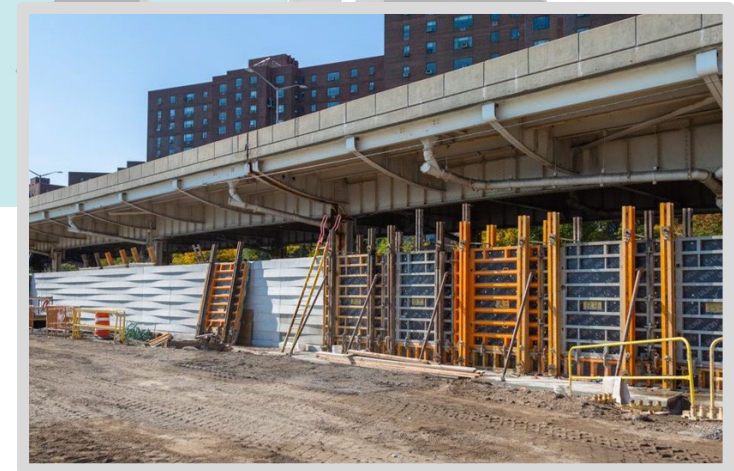
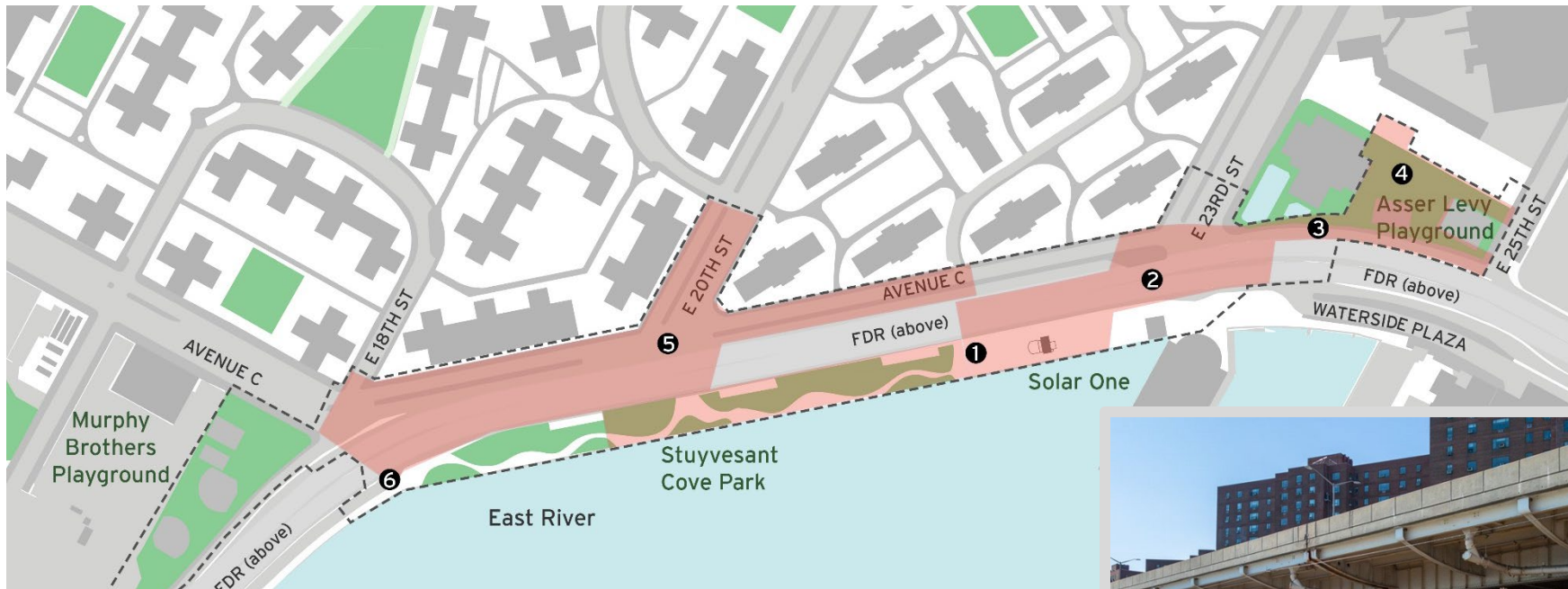
For More Information: Contact **Nadine Harris** at (347) 572-3057, ESCRCCL2@ddccr.com, or via web inquiry: www.nyc.gov/escr/contact

During non-construction hours, please contact the New York City Government Services and Information Hotline at 311.



Construction Bulletin

Numbers on the map below show the approximate location of the construction operations described on the first page. For more detailed information, see Advisories released for each detour/traffic pattern change posted on the website: www.nyc.gov/escr/notices



Operation 1:
Ongoing floodwall construction in Stuyvesant Cove Park.

For More Information: Contact **Nadine Harris** at (347) 572-3057, ESCRCL2@ddccr.com, or via web inquiry: www.nyc.gov/escr/contact
During non-construction hours, please contact the New York City Government Services and Information Hotline at 311.

