

## PROJECT AREA 2 – Two Week Look Ahead

11/13/21 - 11/26/21

**PROJECT#: SANDRESM2 | BOROUGH: MANHATTAN | DATE ISSUED: 11/12/21**

The following is an anticipated work schedule for the upcoming week. **However, due to unforeseen field and weather conditions**, it may become necessary to change some scheduled work locations, operations, and dates.

Map Key	Date	Work Hours	Location	Operation
1	11/15/21–11/26/21	7:00 am to 3:30 pm	Stuyvesant Cove Park: North of E 20 Street including Solar One area	Greenway closure continues. Pile installation for the floodwall ongoing. Floodwall foundation, formwork, and construction of wall sections.
2	11/15/21–11/26/21	7:00 am to 3:30 pm	E 23 Street at East Service Road and under the FDR Dr.	* Modified Traffic Pattern at E. 23rd Street under the FDR Dr. continues. ECS & ConEdison utility work.
	11/13/21	8:00am to 3:30 pm	Adjacent to BP Gas Station	Saturday 11/13, ConEdison utility operation. Traffic will not be impacted
3	11/15/21–11/26/21	7:00 am to 3:30 pm	West Service Rd between E 25 Street and E 23 Street	Pile installation for the floodwall ongoing.
4	11/15//21–11/26/21	7:00 am to 3:30 pm	Asser Levy Playground	Pile installation for the floodwall ongoing. Curb installation ongoing and begin park sidewalk. Underground plumbing and electrical work.
5	11/15/21–11/26/21	7:00 am to 3:30 pm	E 20 Street and Avenue C Intersection	ConEdison utility work continues.
6	11/15/21–11/26/21	7:00 am to 3:30 pm	Exit 7 Ramp FDR Dr. left lane at Avenue C	* Modified Traffic Pattern at FDR Ramp continues Sewer installation

**REMINDERS: \*Modified Traffic Pattern at E 23rd Street under the FDR Dr. continues. \*Modified Traffic Pattern at FDR Exit 7 Ramp continues.**

Thursday, November 25, 2021, no construction activity for Thanksgiving.

Utility work by ConEdison, ECS, etc. may extend work hours and/or occur on weekends to facilitate utility relocations, maintenance work or inspection services.

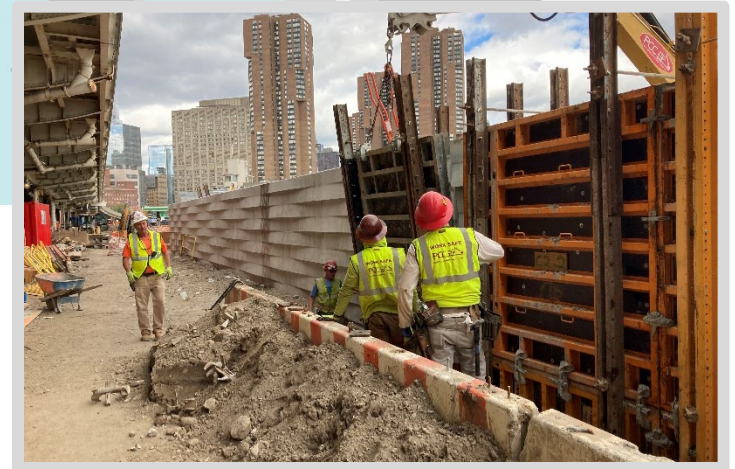
**For More Information:** Contact **Nadine Harris** at (347) 572-3057, ESCRCCL2@ddccr.com, or via web inquiry: [www.nyc.gov/escr/contact](http://www.nyc.gov/escr/contact)

During non-construction hours, please contact the New York City Government Services and Information Hotline at 311.



# Construction Bulletin

Numbers on the map below show the approximate location of the construction operations described on the first page. For more detailed information, see Advisories released for each detour/traffic pattern change posted on the website: [www.nyc.gov/escr/notices](http://www.nyc.gov/escr/notices)



**Operation 1:**  
Ongoing floodwall construction in Stuyvesant Cove Park.

**For More Information:** Contact **Nadine Harris** at (347) 572-3057, [ESCRCL2@ddccr.com](mailto:ESCRCL2@ddccr.com), or via web inquiry: [www.nyc.gov/escr/contact](http://www.nyc.gov/escr/contact)  
During non-construction hours, please contact the New York City Government Services and Information Hotline at 311.

