



## PROJECT AREA 2 – Two Week Look Ahead

7/21/25 – 8/01/25

**PROJECT#: SANDRESM2 | BOROUGH: MANHATTAN | DATE ISSUED: 7/17/25.**

The following is an anticipated work schedule for the upcoming week. However, due to unforeseen field and weather conditions, it may become necessary to change some scheduled work locations, operations, and dates.

Map Key	Date	Work Hours	Location	Operation
1	7/21/25-8/01/25	7:00 am to 3:30 pm	Stuyvesant Cove Park	Stuyvesant Cove Park open!! No access to Stuyvesant Cove Park from E 23 <sup>rd</sup> Street entrance. Punch list in progress
2	7/21/25-8/01/25	7:00 am to 3:30 pm	E. 20th Street to E. 23 <sup>rd</sup> Street Stuyvesant Cove Park	Waterfront Sidewalk replacement is completed Punch list in progress
3	7/21/25-8/01/25	7:00 am to 3:30 pm	Asser Levy Park	Punch list in progress

**REMINDERS: Greenway between E. 23rd has been reopened to the community.**

Utility work by Con Edison, ECS, etc. may extend work hours and/or occur on weekends to facilitate utility relocations, maintenance work or inspection services.

Numbers on the map below show the approximate location of the construction operations described on the first page. For more detailed information, see Advisories released for each detour/traffic pattern change posted on the website: [www.nyc.gov/escr/notices](http://www.nyc.gov/escr/notices)

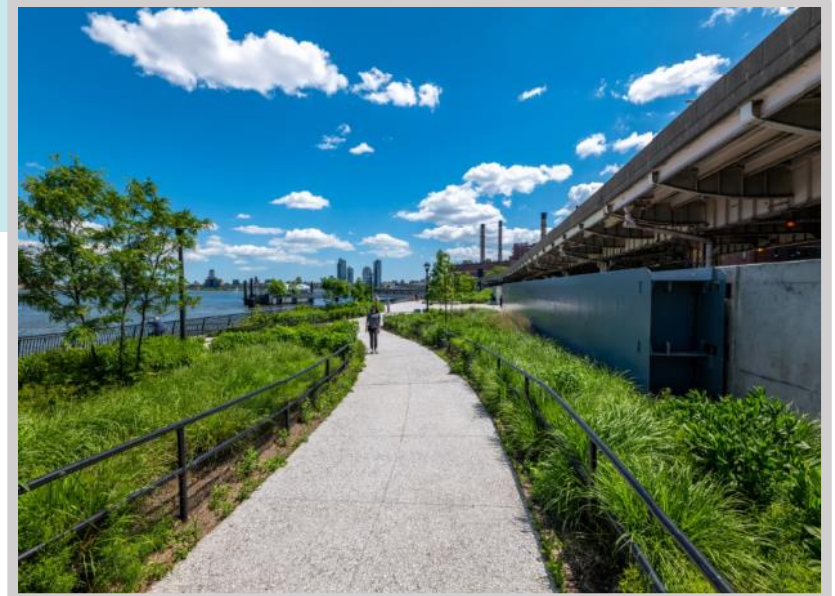
**For More Information:** Contact **Nadine Harris** at (917) 873-8254, [ESCRCL2@ddccr.com](mailto:ESCRCL2@ddccr.com), or via web inquiry: [www.nyc.gov/escr/contact](http://www.nyc.gov/escr/contact)  
During non-construction hours, please contact the New York City Government Services and Information Hotline at **311**.

# Construction Bulletin

East Side Coastal Resiliency  
[www.nyc.gov/escr](http://www.nyc.gov/escr)



Stuyvesant Cove Park – May 2025



**For More Information:** Contact **Nadine Harris** at (347) 572-3057, [ESCRCL2@ddccr.com](mailto:ESCRCL2@ddccr.com), or via web inquiry: [www.nyc.gov/escr/contact](http://www.nyc.gov/escr/contact)  
During non-construction hours, please contact the New York City Government Services and Information Hotline at **311**.

EAST SIDE  
COASTAL  
RESILIENCY

**NYC**  
**DDCC**  
Department of  
Design and  
Construction  
Office of Community Outreach & Notification

**NYC**  
Mayor's Office of Climate &  
Environmental Justice

  
NYC Parks

**NEW YORK CITY**  
**DOH**  
Department of Health

**NYC**  
Environmental  
Protection