



## PROJECT AREA 1 – Two Week Look Ahead

10/29/22 - 11/12/22

**PROJECT#: SANDRESM1 | BOROUGH: MANHATTAN | DATE ISSUED: 10/28/22**

The following is an anticipated work schedule for the upcoming week. **However, due to unforeseen field and weather conditions**, it may become necessary to change some scheduled work locations, operations, and dates. The community will be advised of changes.

Map Key	Date	Work Hours	Location	Operation
1	10/29/22–11/12/22	6:00 am to 6:00 pm	<b>East River Park: South of Stanton Street</b>	Soil stabilization activities & esplanade removal along waterfront. Ongoing deep excavation sewer work and pile installation. <b>Weekend work anticipated.</b>
2	10/31/22–11/11/22	7:00 am to 5:00 pm	<b>East River Park: Delancey Street Bridge</b>	Ongoing site preparation on the park side for the new Delancey Street Bridge.
3	10/31/22–11/11/22	7:00 am to 5:00 pm	<b>East River Park: Greenway between E. Houston St. &amp; E. 10<sup>th</sup> St.</b>	<b>Entrances at E. Houston Street, E. 6<sup>th</sup> St. Bridge and E. 10<sup>th</sup> St. Bridge are open.</b> <b>See <a href="#">Access Plan</a> for details and open areas.</b> Ongoing Con Edison utility work and backfilling, see <a href="#">Advisory</a> . <b>*E. 6th St. Pedestrian Bridge temporary closure on Thursday, November 3rd from 7:00 am to 3:30pm, see <a href="#">Advisory</a>.</b>
4	10/31/22–11/11/22	9:00 am to 5:00 pm	<b>E. 10<sup>th</sup> Street between FDR Drive and Avenue D</b>	Ongoing utility work and test pits.
5	10/31/22–11/11/22	7:00 am to 5:00 pm	<b>Corlears Hook Park Flagpole area &amp; East River Park: Passive Lawn</b>	<b>For public access to ferry use the temporary bridge at Corlears Hook, see <a href="#">Advisory</a>.</b> Ongoing site, utility work, and pile installation for new Corlears Hook Bridge.
6	10/31/22–11/11/22	7:00 am to 5:00 pm 9:00 pm to 5:30 am	<b>East River Park: Greenway between Montgomery St. &amp; Jackson St.</b>	Ongoing site preparation activities and sheet pile installation. Possible <b>overnight work with partial FDR lane closures</b> . See <a href="#">Advisory</a> .
7	10/29/22–10/30/22 10/31/22–11/11/22	7:00 am to 3:30 pm 9:00 am to 2:00 pm	<b>Montgomery Street / South Street area and Various Locations</b>	Ongoing Con Edison work and test pits. <b>Weekend work anticipated.</b>

The contractor may extend work hours and/or occur on weekends when necessary as approval by NYC DDC.

Utility work by Con Edison may also extend work hours and/or occur on weekends to facilitate utility relocations, maintenance work or inspection services.

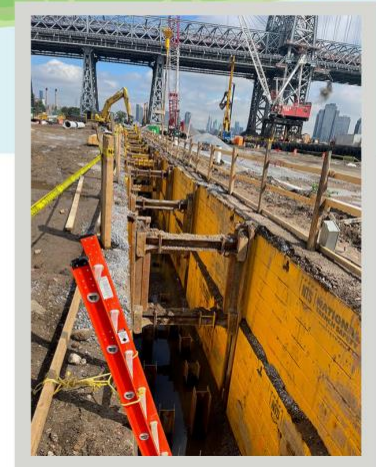
**Questions? ¿Preguntas? 问题?:** Contact **Sonia Quinones** at (347) 628-8724, **Joyce Xin** at (929) 844-0408, [ESCRCL1@ddccr.com](mailto:ESCRCL1@ddccr.com), or via web inquiry: [www.nyc.gov/escr/contact](http://www.nyc.gov/escr/contact).

During non-construction hours, please contact the New York City Government Services and Information Hotline at **311** or Universal Emergency Number **911**.

# Construction Bulletin



Numbers on the map below show the approximate location of the construction operations described on the first page. For more detailed information, see Advisories released for closure and detour posted on the website: <https://www1.nyc.gov/site/escr/project-updates/pa1-notice.page>.



Deep sewer work at East River Park  
September 2022

Questions? ¿Preguntas? 问题?: Contact **Sonia Quinones** at (347) 628-8724, **Joyce Xin** at (929) 844-0408, [ESCRCL1@ddccr.com](mailto:ESCRCL1@ddccr.com), or via web inquiry: [www.nyc.gov/escr/contact](http://www.nyc.gov/escr/contact). During non-construction hours, please contact the New York City Government Services and Information Hotline at **311** or Universal Emergency Number **911**.