



PROJECT AREA 1 – Two Week Look Ahead

06/05/22 - 06/17/22

PROJECT#: SANDRESM1 | BOROUGH: MANHATTAN | DATE ISSUED: 06/03/22

The following is an anticipated work schedule for the upcoming week. **However, due to unforeseen field and weather conditions**, it may become necessary to change some scheduled work locations, operations, and dates. The community will be advised of changes.

Map Key	Date	Work Hours	Location	Operation
1	06/06/22–06/17/22	7:00 am to 3:30 pm	East River Park: South of Stanton Street	Site preparation. Soil stabilization & esplanade removal along waterfront. Con Edison utility work around Corlears Hook Ferry Landing.
2	06/06/22–06/17/22	7:00 am to 3:30 pm	East River Park: Greenway	Ongoing Con Edison utility work, closure extended north to E. 10 th Street. Site preparation, including clearing and grubbing, and removals. See Advisory and Access Plan .
3	06/06/22–06/17/22	7:00 am to 3:30 pm	Corlears Hook Park Flagpole area and East River Park Passive Lawn	Ongoing site preparation, including clearing and grubbing, and removals. Temporary Pedestrian Bridge installation continues. The week of 06/06/2022: Flagpole area and Corlears Hook Bridge scheduled to close and install protective fence, See Advisory .
4	06/05/22	12:01 am to 10:00 am	Corlears Hook Temporary Bridge	*Overnight work: Full FDR closure, see Advisory. Temporary Bridge Installation operation scheduled on Sunday, 06/05/2022.
5	06/06/22–06/17/22	9:00 am to 2:00 pm	Montgomery Street / South Street area and Various Locations	Ongoing Con Edison steam line work and test pits.
6	06/06/22–06/17/22	9:00 am to 5:00 pm	E. 10th Street Between FDR Drive and Avenue D	Con Edison utility work continues. Parking restriction in effect, see Advisory and on-site signage.
7	06/06/22–06/17/22	9:00 pm to 5:00 am	FDR Drive around E. Houston Street and various locations	Slip Ramp construction continues. Overnight work with FDR Drive lane closure.

REMINDERS: To access open park areas use entrances at E Houston Street, E. 6th St. Bridge, or E. 10th St. Bridge.

***Overnight work for bridge installation scheduled on Sunday, 06/05/2022. The work will necessitate a full FDR closure (northbound and southbound between Exit 2 and Exit 5). Please follow all detour signage and instructions on-site. See [Advisory](#).**

Utility work by Con Edison may extend work hours and/or occur on weekends to facilitate utility relocations, maintenance work or inspection services.

Questions? ¿Preguntas? ? Contact **Sonia Quinones** at (347) 628-8724, **Joyce Xin** at (929) 844-0408, ESCRCL1@ddccr.com, or via web inquiry: www.nyc.gov/escr/contact.
During non-construction hours, please contact the New York City Government Services and Information Hotline at **311** or Universal Emergency Number **911**.

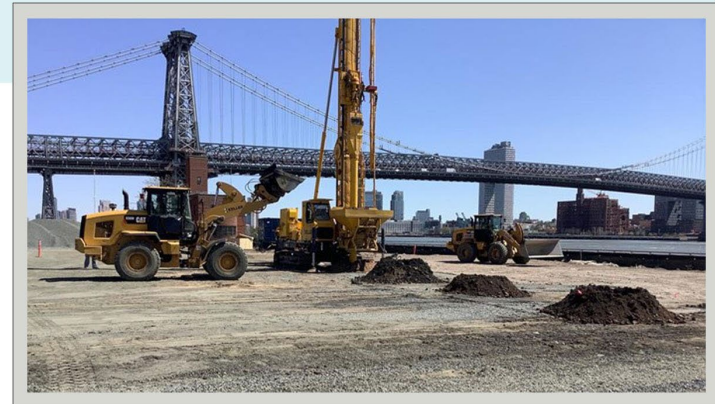
Construction Bulletin



Numbers on the map below show the approximate location of the construction operations described on the first page. For more detailed information, see Advisories released for closure and detour posted on the website: <https://www1.nyc.gov/site/escr/project-updates/pa1-notices.page>.



Operation 1:
May 2022, East River Park Waterfront
Soil Stabilization in progress



Questions? ¿Preguntas? Contact **Sonia Quinones** at (347) 628-8724, **Joyce Xin** at (929) 844-0408, ESCRCL1@ddccr.com, or via web inquiry: www.nyc.gov/escr/contact. During non-construction hours, please contact the New York City Government Services and Information Hotline at **311** or Universal Emergency Number **911**.