



PROJECT AREA 1 – Two Week Look Ahead

10/27/23 - 11/11/23

PROJECT#: SANDRESM1 | BOROUGH: MANHATTAN | UPDATE: 10/27/23

The following is an anticipated work schedule for the upcoming week. **However, due to unforeseen field and weather conditions**, it may become necessary to change some scheduled work locations, operations, and dates. The community will be advised of changes.

Map Key	Date	Work Hours	Location	Operation
1	10/27/23–11/11/23	6:00 am to 12:00 am	East River Park: South of Stanton Street	Ongoing fill operations, floodwall installation, esplanade removal along waterfront, deep excavation sewer work and park drainage work. Construction of Ballfields 1 and 2. Weekend work and extended weekday working hours anticipated.
2	10/27/23–11/11/23	7:00 am to 5:00 pm	East River Park: Delancey Street Bridge	Park side: ongoing pile installation. Residential side: ongoing pile installation and curb and sidewalk construction. Sidewalk at Delancey St. and FDR Dr. service road closed for construction activities, see Advisory . Park side and residential side: bridge pier installation.
3	10/27/23–11/11/23 10/27/23-11/11/23	6:00 am to 5:00 pm 3:00 pm to 11:59 pm	East River Park: E. Houston St. Overpass	Ongoing retaining wall construction activities, including pile installation. Pedestrians use the Baruch Pl. crosswalk to access the north ramp into the park, see Advisory . Extended weekday working hours anticipated, see Advisory.
4	10/27/23–11/11/23	7:00 am to 5:00 pm	East River Park: Greenway between E. Houston St. & E. 10 th St.	Entrances at E. Houston Street, E. 6th St. Bridge and E. 10th St. Bridge are open. *Greenway between E. 12th to E. 20th St closed, see Advisory for detour.
5	10/30/23–11/12/23	7:00 am to 5:00 pm	E. 10 th Street between FDR Drive and Avenue D	Ongoing utility work and test pits.
6	10/27/23–11/11/23	6:00 am to 5:00 pm	Corlears Hook Park Flagpole area & East River Park: Passive Lawn	For public access to ferry use the temporary bridge at Corlears Hook, see Advisory Ongoing site, utility work, and pile installation, bridge abutment, and wingwall installation for new Corlears Hook Bridge. <i>Please note: Corlears Hook ferry landing will be closed for scheduled EDC maintenance from 10/30/23 - 11/03/23.</i>
7	10/27/23–11/11/23	7:00 am to 6:00 pm	East River Park Greenway & FDR Dr. between Montgomery St. & Jackson St.	Ongoing sheet pile installation and Con Edison utility abatement work. FDR Dr. NB Montgomery St. on-ramp shifted onto East River Greenway, see Advisory .
8	10/27/23–11/11/23	9:00 am to 2:00 pm 7:00 am to 3:30 pm	Montgomery Street / South Street area and Various Locations	Ongoing Con Edison work, test pits and utility work. Weekend work anticipated. Montgomery St. parking lot sidewalk closed for floodwall construction, see Advisory .

The contractor may extend work hours and/or occur on weekends when necessary, as approved by NYC DDC.

Utility work by Con Edison may also extend work hours and/or occur on weekends to facilitate utility relocations, maintenance work or inspection service.

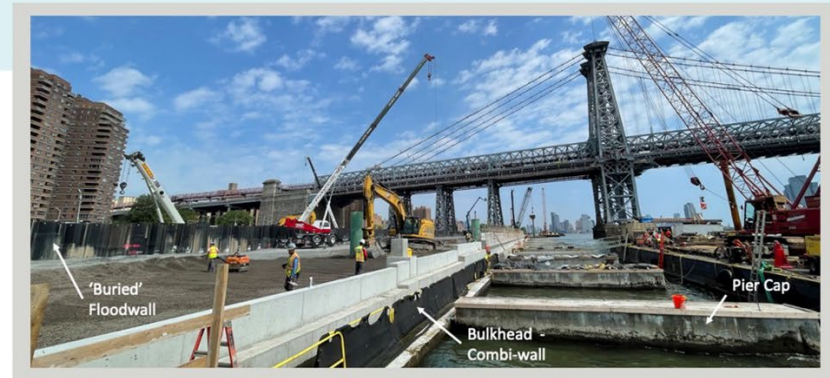
Questions? ¿Preguntas? 问题?: Contact **Vanessa Gomez** at (347) 628-8724 or ESCRCCCL1@ddccr.com, or via web inquiry: www.nyc.gov/escr/contact.

During non-construction hours, please contact the New York City Government Services and Information Hotline at **311** or Universal Emergency Number **911**.

Construction Bulletin



Numbers on the map below show the approximate location of the construction operations described on the first page. For more detailed information, see Advisories released for closure and detour posted on the website: <https://www1.nyc.gov/site/escr/project-updates/pa1-notices.page>.



Future buried floodwall near Williamsburg Bridge, July 2023

Questions? ¿Preguntas? 问题?: Contact **Vanessa Gomez** at (347) 628-8724 or **Joyce Xin** at (929) 844-0408, ESCRCL1@ddccr.com, or via web inquiry: www.nyc.gov/escr/contact. During non-construction hours, please contact the New York City Government Services and Information Hotline at **311** or Universal Emergency Number **911**.