



## PROJECT AREA 2 – Two Week Look Ahead

2/07/22 - 2/18/22

**PROJECT#: SANDRESM2 | BOROUGH: MANHATTAN | DATE ISSUED: 2/04/21**

The following is an anticipated work schedule for the upcoming week. **However, due to unforeseen field and weather conditions**, it may become necessary to change some scheduled work locations, operations, and dates.

Map Key	Date	Work Hours	Location	Operation
1	2/07/22–2/18/22	7:00 am to 3:30 pm	<b>Stuyvesant Cove Park: E 20 Street to E 23 Street</b>	Greenway closure continues Floodwall construction ongoing
2	2/07/22–2/18/22	7:00 am to 3:30 pm	<b>E 23 Street at East Service Road and under the FDR Dr. Adjacent to BP Gas Station</b>	* Modified Traffic Pattern at E. 23rd Street under the FDR Dr. ECS & ConEdison utility work ongoing Pile installation for the floodwall
3	2/07/22–2/18/22	7:00 am to 3:30 pm	<b>West Service Rd between E 25 Street and E 23 Street</b>	Pile installation for the floodwall ongoing Floodwall concrete construction begins
4	2/07/22–2/18/22	7:00 am to 3:30 pm	<b>Asser Levy Playground</b>	Park reconstruction and Floodwall construction ongoing <b>**Handball Court closure begins 2/7/22</b> to paint rails and replace fences
5	2/07/22–2/18/22	7:00 am to 3:30 pm	<b>E 15<sup>th</sup> Street between Ave C and FDR Dr. within Con Edison Facility</b>	Sewer reconstruction/coordination for sub-surface investigation
6	2/07/22–2/18/22	7:00 am to 3:30 pm	<b>E 18<sup>th</sup> Street Exit 7 Ramp FDR Dr. left lane at Avenue C</b>	Modified Traffic Pattern at FDR Ramp continues Excavate and install Sewer structures

**REMINDERS: \*Modified Traffic Pattern detour at E 23rd Street under the FDR Dr. continues. \*\*Handball Court closure begins Monday, 2/7/2022**

Utility work by ConEdison, ECS, etc. may extend work hours and/or occur on weekends to facilitate utility relocations, maintenance work or inspection services

**For More Information:** Contact **Nadine Harris** at (347) 572-3057, ESCRCCL2@ddccr.com, or via web inquiry: [www.nyc.gov/escr/contact](http://www.nyc.gov/escr/contact)

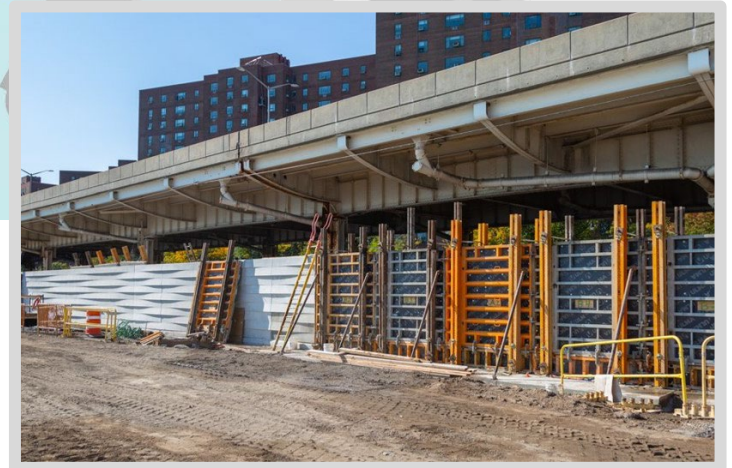
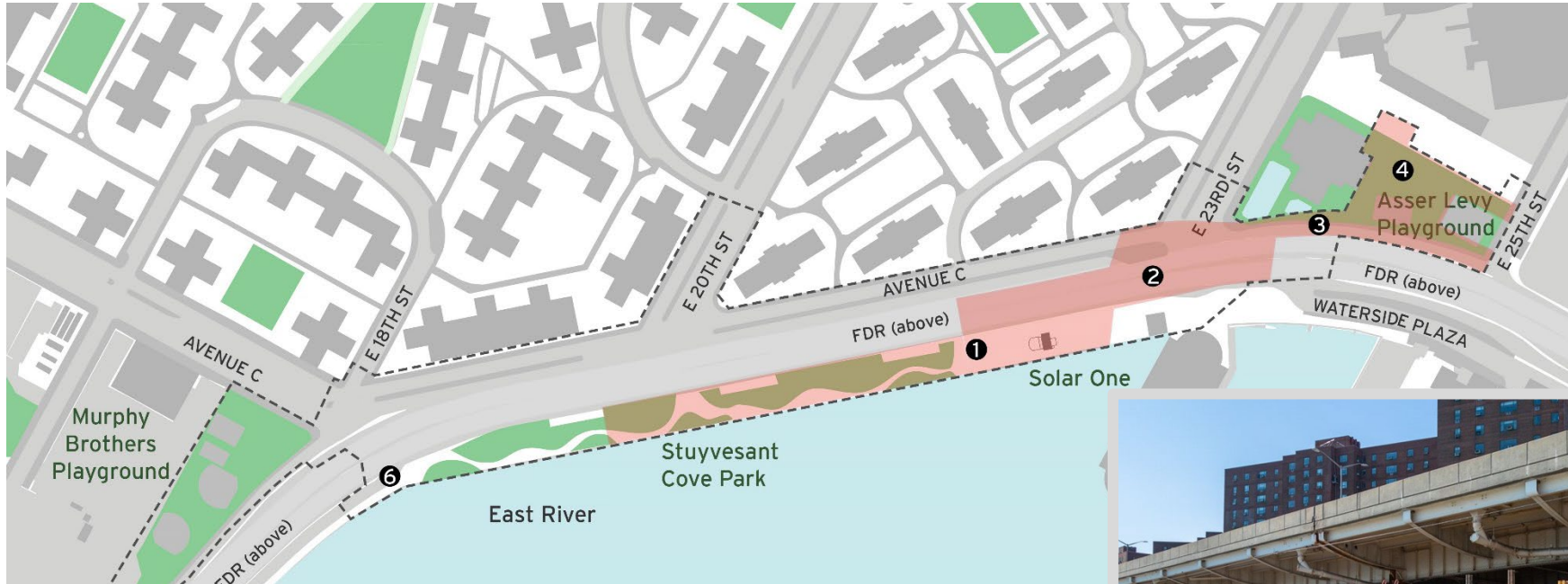
During non-construction hours, please contact the New York City Government Services and Information Hotline at 311.

# Construction Bulletin

East Side Coastal Resiliency  
www.nyc.gov/escr



Numbers on the map below show the approximate location of the construction operations described on the first page. For more detailed information, see Advisories released for each detour/traffic pattern change posted on the website: [www.nyc.gov/escr/notices](http://www.nyc.gov/escr/notices)



**Operation 1:**  
Ongoing floodwall construction in Stuyvesant Cove Park.

**For More Information:** Contact **Nadine Harris** at (347) 572-3057, [ESCRCL2@ddccr.com](mailto:ESCRCL2@ddccr.com), or via web inquiry: [www.nyc.gov/escr/contact](http://www.nyc.gov/escr/contact)  
During non-construction hours, please contact the New York City Government Services and Information Hotline at **311**.