



## East Side Coastal Resiliency

The East Side Coastal Resiliency (ESCR) project is a coastal protection initiative, jointly funded by the City of New York and the federal government, aimed at reducing flood risk due to coastal storms and sea level rise. The ESCR project will protect 110,000 New Yorkers from the impacts of climate change by reducing flood risk to communities, properties, businesses, critical infrastructure, and public open spaces. In addition to providing flood protection, the project will strengthen and enhance waterfront spaces on Manhattan's East Side by improving accessibility, increasing ecological diversity, and delivering improved recreational amenities to a vibrant and highly diverse community. The ESCR project is among the largest and most technically complex infrastructure projects in New York City's history.

*East Side Coastal Resiliency (ESCR) is creating a 2.4 mile flood protection system that consists of floodwalls and floodgates that are designed to blend into the fabric of the community by integrating with local streets, the elevated East River Park, and the new landscape surrounding Corlears Hook Park, Murphy Brothers Playground, Stuyvesant Cove Park, and Asser Levy Playground. The project also involves significant investments in underground interior drainage improvements that will increase the capacity of the sewer system.*

### ESCR Highlights

The ESCR team hit a milestone in Project Area 2 construction with the opening of Stuyvesant Cove Park north of E. 20th Street before Memorial Day. To date, over 1,600 linear feet of floodwalls and six floodgates have been installed on the project!

The ESCR Community Engagement team is working hard to connect with the ESCR community and is continuing outreach programming, including ESCR to YOUR School, ESCR Summer Tabling, and tenant meetings. Reach out to your CCL for more information on these events (more information on Page 5).

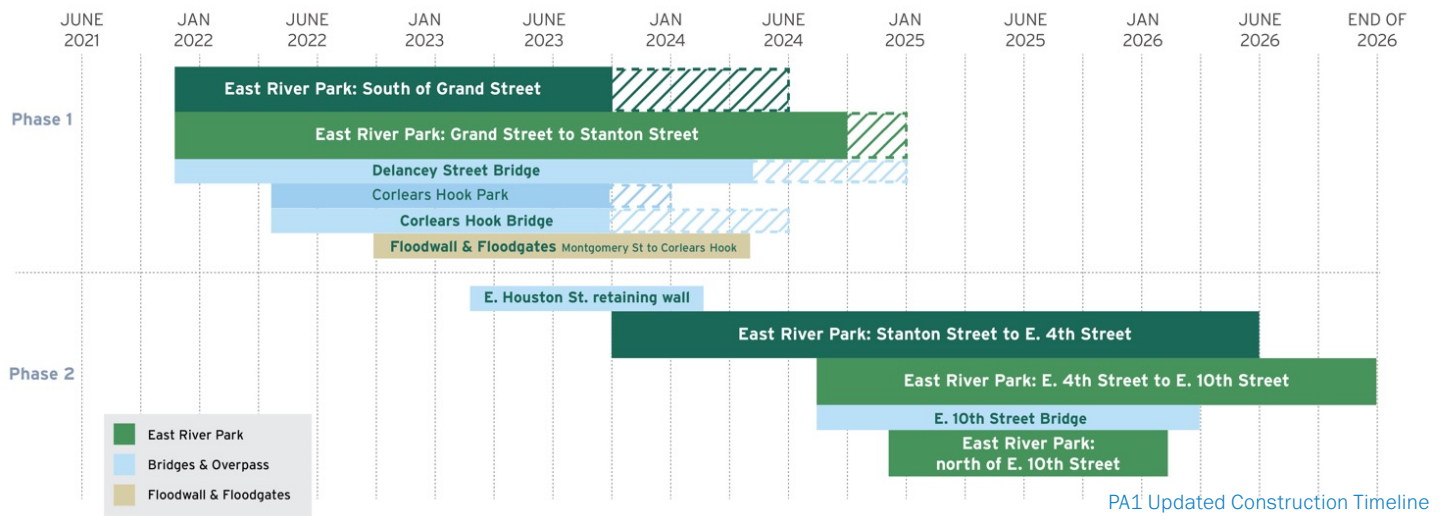
## Project Area 1

East River Park and adjacent areas

### Construction in East River Park continues

*Work in Project Area 1 (PA1) is concentrated between Montgomery Street and E. 15th Street, largely focused on East River Park. East River Park will be closed in phases over the next several years, keeping a minimum of 42% open space for public access at all times. The phasing approach aims to provide full flood protection for the community as quickly as possible and maintain public and worker safety during construction.*

Currently, East River Park from Montgomery Street north to Stanton Street, including a small portion of Corlears Hook Park, is closed for construction (see map on Page 2). East River Park north of Stanton Street is open, and visitors can access open areas of the park at the E. Houston Street north ramp, or via the E. 6th Street and E. 10th Street pedestrian bridges. The work in Ballfield #3 was completed in Spring 2023, and the field is now open to the public.

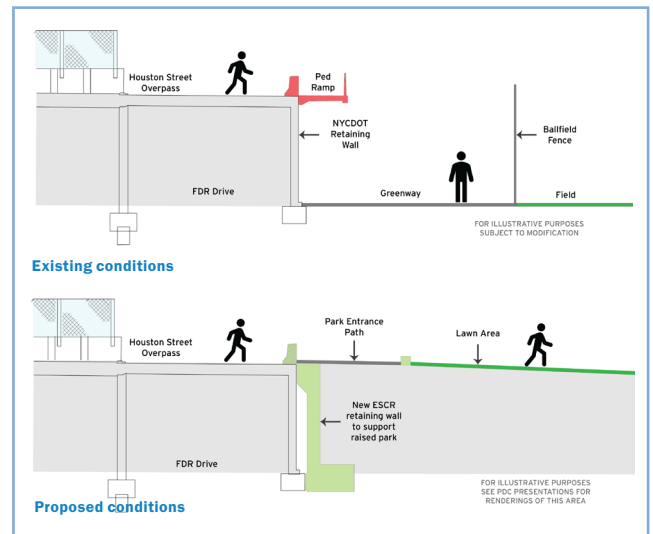


The most up-to-date [PA1 Construction Approach](#) was presented to the Community Advisory Group (CAG) on May 25, 2023, and can be found on the ESCR website [Project Updates page](#). At the meeting, the team reviewed an updated sub-phasing timeline which prioritizes longer duration construction activities first, and shifts the opening date of the southern portion of the park from late 2023 to early 2024. While the re-prioritization of construction activities shifts the initial opening dates, the full project is still on schedule for completion in 2026.

### PA1 Construction Progress in 2023

**1 New Construction Activity:** The week of May 8, 2023, demolition activities necessitated the closure of the E. Houston Street south ramp, overpass south sidewalk, and a portion of the Greenway, which was presented at the [May CB3 Parks Committee Meeting](#) (pages 10-11). Building this retaining wall is a very important step to prepare for phase 2 construction and import of fill. The north ramp has been reopened for park access. When approaching the park, pedestrians should use the Baruch Place crosswalk to access the north sidewalk of E. Houston Street Park amenities have not been impacted. See the [PA1 Access Map](#) for detailed pedestrian circulation, and please follow posted signage in the open park.

**2 Building Back the Bridges:** We are working hard to rebuild connections to the community. Pile and abutment installation are in progress for both Corlears Hook Bridge and Delancey Street Bridge. See the [Advisory](#) for the sidewalk closures related to the Delancey Street Bridge work activities.



E. Houston Street Overpass retaining wall existing conditions and proposed conditions illustration diagram.



Project Area 1 (PA1) Construction Progress Map, January 2023



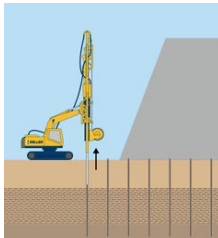
Combi-Wall construction, April 2023



Wick drain installation, April 2023

**3 Building Back the East River Park:** Esplanade removal, deep sewer improvement work and floodwall (Combi-wall) installation activities are in progress. In Q1 2023, soil stabilization and wick drain installation completed in the area south of Stanton Street.

**Wick Drain**, also known as Prefabricated Vertical Drains (PVD) are prefabricated geotextile filter-wrapped plastic strips with molded channels. These act as drainage paths to take pore water out of compressible soils so they consolidate faster ([Keller-na.com](http://Keller-na.com)).



The soils need to meet a prescribed [Wick Drain illustration](#) compaction rate before the team can begin to build back the park.

**4 Floodwall Progress:** This year, the Montgomery Street parking lot floodwall construction began. Sheet pile installation along the Greenway from Montgomery Street to Cherry Street is ongoing. With approval of the concrete floodwall mockup, you should be seeing the work here move forward in the next few months.

**5 Archaeology Update:** Field investigation work in Corlears Hook Park is completed. The Mitigation Work Plan (MWP) is under review by the consulting parties. Consulting parties have until the end of June to comment on MWP. After the comment period, the city will finalize the MWP and share through the project website. Construction can begin once the MWP is finalized and approved. For questions regarding archaeology or the MWP, please submit through the [ESCR Inquiry Tool](#).

## Project Area 2

Asser Levy Playground/Stuyvesant Cove Park/Murphy Brothers Playground

The ESCR team is making HUGE progress in Project Area 2 construction. To date, over 1,600 linear feet of floodwall and six floodgates have been installed! On April 28, Floodgate #13, a 77-foot-long sliding gate weighing 47.5 tons, was installed at E. 20th Street in Stuyvesant Cove Park. On the same night, a 42-foot-long, 16-ton swinging floodgate, Gate 17, was installed at E. 23rd Street and the West Service Road under the FDR Drive. Floodgates #10 and #16 were installed on June 6.

The connection pinch point between East River Park and Stuyvesant Cove Park closed in February 2023 for construction activities. Access East River Park at the E. 10th Street pedestrian bridge or the E. Houston Street overpass. Current access to the Stuyvesant Cove Ferry will not be impacted. Murphy Brothers Playground floodwall and floodgate construction will continue through late spring of 2024.



Flood Gate 10, 13, 16, 17 installed in Project Area 2, April & June 2023



Stuyvesant Cove Park north of E. 20th Street open, May 2023

## Stuyvesant Cove Park

**[Stuyvesant Cove Park north of E. 20th Street](#) opened at the end of May!** Stuyvesant Cove Park south of E. 20th Street anticipates reopening summer 2023. To date, 1,340 feet of floodwall has been built at this location which rests on 173 piles driven up to 125 feet below ground to support the wall, using 3,349 cubic yards of concrete and 333 tons of reinforced steel. An additional layer of sheet piling installed up to 60 feet deep, blocks water from the East River that may infiltrate the neighborhood from underground during future storm or flood events.

Once completed, the entire new Stuyvesant Cove Park from E. 18th Street to E. 23rd Street will include 7,095 cubic yards of soil, newly planted trees and 579 new shrubs throughout. There will be 1,180 feet of concrete precast seating areas that are also designed to break the force of waves that may approach the floodwall from the East River, along with benches, tables and chairs for park users. Along the sea wall, 1,345 feet of new decorative railings will have been added.

## Parallel Conveyance (PC)

[Various location from Montgomery Street to E. 25th Street / Current focus area: Water Street & Jackson Street](#)

Parallel Conveyance (PC) will increase sewer capacity to provide flood protection during heavy rainfall events. Before most of the construction work can begin, the contractor must make small excavations—called test pits—around the project area to survey subsurface conditions and to locate underground utilities. While the city provides approximate locations for utilities, many were installed 100 years ago or may have been modified during emergency work, and therefore the exact locations must be confirmed. This is particularly important for this project because much of the work involves upgrading utilities in addition to the sewer expansion work.

So far, the contractor has been focused on pre-construction activities including test pits for subsurface investigation, site surveys, and building inspections. Community impacts have primarily been limited to street parking restrictions in construction areas. In May, the contractor began construction activities in southern project areas, with plans to move north as the project progresses.

Initial construction activities have included water main upgrades and utility relocation. The subsurface utilities must

be relocated so that the contractor can access the sewer lines, which are the deepest of all utilities. To replace the old existing water main, the existing water service must be shut off by closing the valves at either end of a section. Advance notice will be given for all planned interruptions, starting with a community advisory one- to two-weeks prior to the start of work, followed by 72- and 24-hr confirmations. Water service will be restored at the end of each workday. Please check the ESCR website's [PC Construction Notices](#) page for more detailed information.

## Community Construction Information

### Community Impacts

- Vehicular travel lane closures, detours and new traffic patterns will be required.
- Cyclists and pedestrian detours will be required.
- Signage will be posted in advance within the affected areas. Traffic Enforcement Agents and flaggers will be present when necessary to assist vehicles and pedestrians.
- Public transportation will be maintained at all times.
- Emergency vehicle and pedestrian access to sidewalks will be maintained at all times.
- Water Service Interruptions: During the project there may be some service interruptions. To allow for water line replacement, existing water service must be temporarily shut off. Advance notice will be provided before any service interruption. Water service will be restored at the end of each night.

### Environmental Monitoring

- Air, noise, and vibration monitors are active 24 hours/day, 7 days/week at locations required for construction.
- Air monitoring summaries for PA1 and PA2 are available on the [ESCR Environmental Monitoring web-page](#), with verbal updates provided at [Community Advisory Group Meetings](#).
- The project follows all federal, state and local guidelines. To date, construction activities have not exceeded National Ambient Air Quality Standards.
- The [ESCR Environmental Fact Sheet](#) and PA1 and PA2 Quarterly Air Monitoring reports can also be found on the [ESCR Environmental Monitoring web-page](#).

# ESCR in the Community

## Community Outreach Event

The ESCR Community Engagement team will continue coordinating with the project's surrounding community to actively attend Tenant/Resident Associate meetings and hold tabling events. This year's events included:

- 02/21/23: Tabling @ NYCHA Riis
- 03/14/23: NYCHA Riis House TA Meeting
- 04/21/23: ESCR Earth Day @ Hamilton Fish Park
- 05/03/23: Tabling @ NYCHA Riis
- 05/16/23: East River Neighbor Town Hall Project Update
- 05/18/23: Tabling @ Avenue C & E. 12th Street (requested by the community)
- 05/26/23: Job Plus Memorial BBQ Bash
- 6/1/23: NYCHA Vladeck House TA Meeting
- 6/6/23: Tabling @ E. Houston Street & Columbia Street
- 6/27/23: Tabling @ Corlears Hook Park

Please email [ESCRCL1@ddccr.com](mailto:ESCRCL1@ddccr.com) if you are interested in having the ESCR Community Outreach Team table in your neighborhood or want the team to present to your building with construction updates. We also deliver in-person and virtual presentations regularly. Subject to availability.

## ESCR to YOUR School

The New York City Department of Design and Construction (NYC DDC) is hosting a student outreach program, called **"ESCR to YOUR School"** at local schools within the ESCR surrounding community. The program educates students about resiliency and climate change, the importance of flood mitigation projects and career opportunities on the projects which the students can one day aspire to be part of. The NYC DDC and ESCR community engagement team presented to two local schools this year: Learning Spring School and M407 Institute for Collaborative Education. We are so excited that students from the two schools collaborated together to create drama pieces at Asser Levy Playground in May! If you teach at a local LES school and want your students to learn more about coastal resiliency or construction, please don't hesitate to reach out using the [ESCR inquiry tool](#).



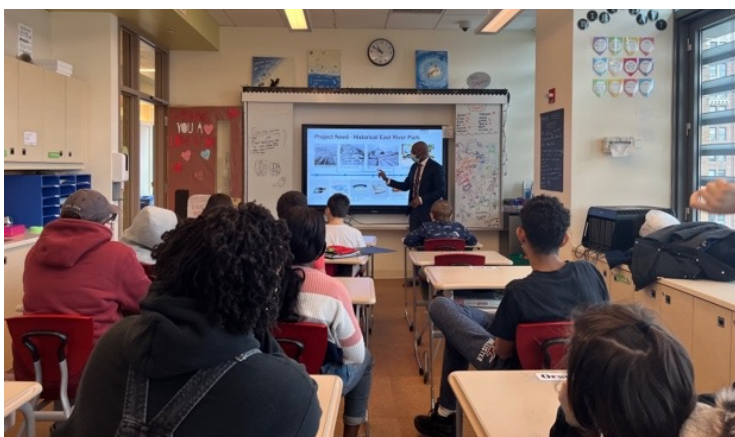
ESCR Table at Job Plus Memorial BBQ Bash, May 2023

## Work With Us

East Side Coastal Resiliency (ESCR) project is a public investment that will help drive the City's economy and create jobs in New York City neighborhoods. Information on training, careers and contracting opportunities are posted on the [Work With Us web-page](#). We encourage individuals and local M/WBE and Section 3 firms to review the opportunities and resources, as well as the factsheet outlining the [ESCR Subcontracting and Hiring Goals](#).

On February 28, 2023, the ESCR Project team hosted a Work With Us Virtual Quarterly Information Event: "New Year, New Career: Tips to Secure New Opportunities" for all community members, from entry-level to experienced individuals. Workforce1, which helps New Yorkers prepare for and connect to jobs across NYC five boroughs, was the featured presenter of this session introducing service, career exploration, and training opportunities. In addition to Workforce1, the Center for Wellbeing & Happiness, NYCHA Resident Economic Empowerment & Sustainability (REES), Lower East Side Employment Network (LESEN), and Henry Street Settlement also presented their services and local resources to the community. For those unable to attend, the presentation slides, live recording and training opportunity resources can be found on the [Work With Us web-page](#).

The ESCR Team is continually working to make our hiring events helpful and relevant to the community. Please submit an inquiry on the [Work With Us web-page](#) if you have any questions or want to submit your resume.



ESCR to YOUR School at Learning Spring School, January 2023



Students present their drama pieces at Asser Levy Playground, May 2023

## ESCR W/MBE firm Spotlight

[BuiStudio](#) is a New York City and New York State-certified M/WBE and HUD-registered Section 3 firm providing hiring compliance and project management services for ESCR PA1 and PA2 as a sub-consultant to the PMCM. BuiStudio has nearly 15 years' experience in program compliance and construction monitoring, expediting/code compliance, procurement, inspections, community outreach, external communications, program reporting and documentation, and works with clients from the proposal phase forward to develop management strategies and stay on for continuity throughout project implementation. Thank you BuiStudio, for being a trusted M/WBE & Section 3 firm on the ESCR Project!



## Park Opening Update

Please check the table below for opening updates of East River Greenway, Park, amenities, bridge, entrances, and NYC Ferry.

### For More Information:

Visit the ESCR website, [www.nyc.gov/escr](http://www.nyc.gov/escr), to sign up to receive weekly Construction Bulletins, Community Advisories, and other project communications, as well as to learn more about community meetings and events, ESCR background, design, and construction, and opportunities to work with us.

Or Submit an Inquiry: [www.nyc.gov/escr/contact](http://www.nyc.gov/escr/contact)

### Questions? Preguntas? 问题?

Please contact our **Community Construction Liaisons (CCL)** for any project related inquiries/concerns you may have:

#### Project Area 1 CCLs:

**Joyce Xin** (欢迎中文咨询): 929-844-0407

**Vanessa Gomez** (para mas información llame): 347-628-8724

**Email:** [ESCRCCCL1@ddccr.com](mailto:ESCRCCCL1@ddccr.com)

#### Project Area 2 CCL:

**Nadine Harris:** 347-572-3057 & [ESCRCCCL2@ddccr.com](mailto:ESCRCCCL2@ddccr.com)

#### Parallel Conveyance CCL:

**Tannia Wokoun:** 914-313-6863 & [sandrespc.ccl@gmail.com](mailto:sandrespc.ccl@gmail.com)

East River Greenway	Between Montgomery Street to E. 10 <sup>th</sup> Street	Closed
	Between E. 10 <sup>th</sup> Street to E. 12 <sup>th</sup> Street	Open
	Between E. 12 <sup>th</sup> Street to E. 20 <sup>th</sup> Street	Closed
	North of E. 20 <sup>th</sup> Street	Open
Open Space	Corlears Hook Park: Dog Run, Playground, Ball field	Open
	Corlears Hook Park: Flagpole area	Closed
	East River Park: Passive Lawn	Partial Open
	East River Park: South of Stanton Street: Amphitheater, Ball Fields #1 to #4, Tennis Court	Closed
	East River Park: North of Stanton Street: Ball Fields #3 to #8, Track & Fields, BBQ, Playground, Basketball Court	Open
	East River Park: 12 <sup>th</sup> Street Lawn	Closed
	Murphy Brother Playground	Closed
	Stuyvesant Cove Park: South of E. 20 <sup>th</sup> Street	Closed
	Stuyvesant Cove Park: North of E. 20 <sup>th</sup> Street	Open
	Asser Levy Playground	Open
Bridge & Entrance	Corlears Hook Bridge	Closed
	Corlears Hook Temporary Bridge	Open
	Delancey Street Pedestrian Bridge	Closed
	Houston Street Entrance	North Ramp Open
	E. 6 <sup>th</sup> Street Pedestrian Bridge	Open
	E. 10 <sup>th</sup> Street Pedestrian Bridge	Open
NYC Ferry	Corlears Hook Ferry Terminal: Access @ Temporary Bridge	Open
	Stuyvesant Cove Ferry Terminal: Access @ E. 20 <sup>th</sup> St.	Open

ESCR opening space and access table