



East Side Coastal Resiliency

Superstorm Sandy measured 1,000 miles wide and took a rare westward hook that put New York City in the path of its onshore wind. It made a historic impact on the city, making landfall on October 29, 2012. With a wind field three times the size of Hurricane Katrina, Superstorm Sandy resulted in the deaths of 44 New Yorkers, flooded 51 miles (71 percent) of city land, left 2.5 million residents without power, resulted in \$19 billion in damages and lost economic activity, rendered 35,000 residents temporarily or permanently displaced, and caused damage to more than 9,100 homes. Since Superstorm Sandy struck, an entirely new class of infrastructure has been created to bolster protection for waterfront neighborhoods from devastating storm surge and regular tidal flooding. These infrastructure projects – such as the East Side Coastal Resiliency Project – are complex, novel, and unparalleled in any other American city. Ten years later, we not only remember those we lost but we recommit to rebuilding and equip ourselves with the necessary engineering solutions to fight climate change.

East Side Coastal Resiliency (ESCR) is creating a 2.4 mile flood protection system that consist of floodwalls and floodgates that are designed to blend into the fabric of the community by integrating with local streets, the elevated East River Park, and the new landscape surrounding Corlears Hook Park, Murphy Brothers Playground, Stuyvesant Cove Park, and Asser Levy Playground. The project also involves significant investments in underground interior drainage improvements that will increase the capacity of the sewer system.

ESCR Highlights

Construction in Project Area 2 is moving along! Work at Murphy Brothers Playground began at the end of September and will bring new ballfields, an improved dog run and active recreational space. Stuyvesant Cove Park north of E. 20th Street including the Solar One area is scheduled to reopen early next year with curving seatwalls and planted berms. The Greenway

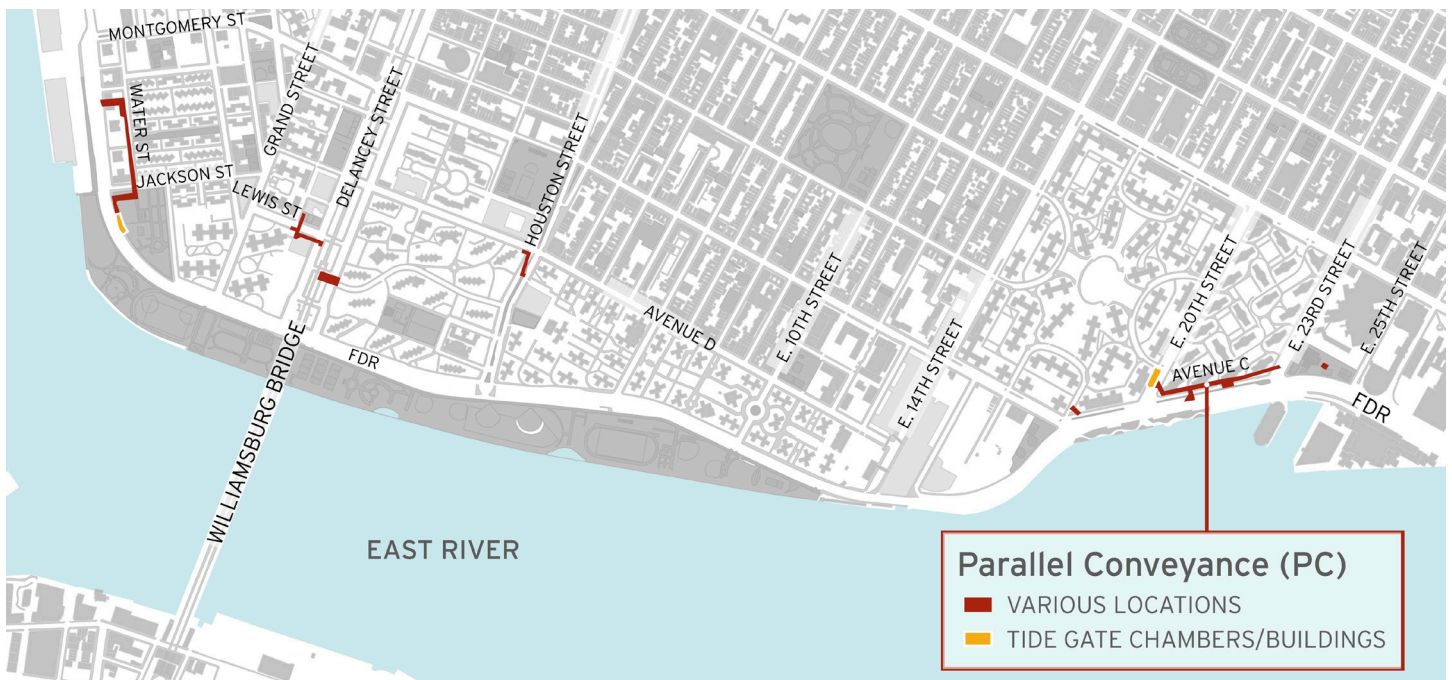
north of E. 20th Street reopened the week of October 31st to cyclists and pedestrians.

The ESCR team successfully hosted the project's first in-person Work With Us Quarterly Information Event on October 19, 2022.

(Read more on Page 5)



Murphy Brothers Playground rendering



Parallel Conveyance (PC) Project Area

Parallel Conveyance (PC)

Parallel Conveyance (PC, SANDRESPC) includes sewer infrastructure work in specific areas within the overall ESCR project footprint. While PA1 and PA2 protect the community from coastal/tidal flooding and saltwater, the PC upgrades will protect the community from flooding that results from heavy rainfall during storm events within the neighborhoods. PC optimizes the existing drainage infrastructure and stormwater system, adding new drainage in parallel to existing infrastructure. The PC work consists of:

- Sewer upgrade work within the project area city streets
- Two interceptor gates, two buildings, and several deep manhole excavations
- Potential street and/or sidewalk closures, detours, and temporary watermain shutoffs during construction

The PC contract was awarded in May, 2022 to NYCC JPL JV, and notice to proceed (NTP) was issued on 9/13/2022. Construction is anticipated to begin winter 2022 for a duration of approximately four years. A [Parallel Conveyance update](#) was presented at the October CB3 Park Committee meeting. Continued updates will be provided to the community as they become available.

Project Area 1

East River Park and adjacent areas

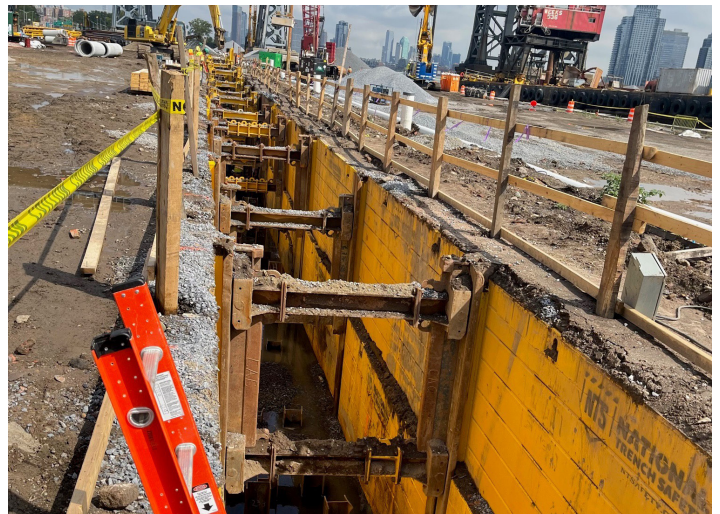
Construction in East River Park continues

Work in Project Area 1 (PA1) is concentrated between Montgomery Street and E. 15th Street, largely focused on East River Park. East River Park will be closed in phases over the next several years, keeping a minimum of 42% open space for public access at all the times. The [PA1 Construction Approach](#) aims to provide full flood protection for the community as quickly as possible and maintain public and worker safety during construction. The most up to date

[PA1 Construction Timeline](#) can be found at the ESCR website [Project Update](#) page.

Currently East River Park from Montgomery Street north to Stanton Street including a small portion of Corlears Hook Park is closed for construction (see map next page). Towards the end of October, NYC Parks opened [Pier 42](#) to the public, offering new recreational amenities to the southern portion of the project. Access to the Corlears Hook Ferry Terminal and Pier 42 is available via the Corlears Hook Temporary Bridge. East River Park north of Stanton Street is open and visitors can access open areas of the park at E. Houston Street, E. 6th Street and E. 10th Street pedestrian bridge. The northern portion of the park is also accessible from the PA2 Greenway, however please note that later this year access from PA2 will close for construction activities.

[Pier 42](#) is managed by NYCEDC and NYC Parks. For inquiries regarding construction, please contact **Rick Fogarty** (Community Outreach Manager) 347-334-8153 or Pier42UplandPark@gmail.com



Deep Sewer Work at East River Park, September 2022 (Activity #1)



Sheet Pile for floodwall along the Greenway, October 2022 (Activity #3)

PA1 Construction Update

- 1 Soil stabilization activities, esplanade removal along waterfront, deep excavation sewer work and pile installation are in progress in the closed areas of East River Park.
- 2 The Greenway between E. Houston Street and E. 10th Street remains closed for the ongoing Con Edison utility work. See the [PA1 Access Map](#) for detailed pedestrian circulation, and please follow posted signages in the open park. A portion of the Greenway is scheduled to reopen to the public later this year.
- 3 Floodwall construction continues along the Greenway from Montgomery Street to Cherry Street. The team is striving to complete this work during the daytime to minimize impact at night. Floodwall construction work will commence Jan 2023 in the Montgomery Street Parking Lot.
- 4 Con Edison utility upgrades will continue throughout the project area for the duration of the project. This includes the Montgomery Street / South Street intersection.
- 5 Utility work will begin soon at Delancey Street and E. 10th Street between Avenue D and FDR Drive. Advisories and signage will be placed in these areas prior to work beginning.

- 6 The amphitheater asbestos abatement completed at the end of October by the licensed asbestos abatement contractor in accordance with all local, state and federal guidelines. See [Environmental Monitoring page](#) and [CAG \(Community Advisory Group\) Virtual Meeting #24](#) for more detailed information.
- 7 Tennis House demolition completed mid-September. The ESCR team coordinated with NYC Parks and Lower East Side Preservation Initiative (LESPI) for the salvage of specific architectural details of the building.

Project Area 2

Asser Levy Playground/Stuyvesant Cove Park/Murphy Brothers Playground

Murphy Brothers Playground, the last park of the PA2 area to be completed, closed on September 26, to facilitate the floodwall and floodgate construction occurring through late spring of 2024. Bus stop and CitiBike relocation is being coordinated with the City and sidewalk access will remain open unless otherwise specified.

To date, over 1,200 linear feet of floodwall has been installed in the project area! Floodgate 17 at the West Service Road is in progress and Floodgates 15 & 16 at E. 23rd Street intersection are scheduled for next year. Site restoration for Stuyvesant Cove Park north of E. 20th Street is underway and scheduled to reopen early next year.



Stuyvesant Cove Park (Northern parj) construction in progress, October 2022



Project Area 1 (PA1) Construction Area, October 2022

FOR ILLUSTRATIVE PURPOSES
SUBJECT TO MODIFICATIONS

The Greenway bike lane north of E. 20th Street has reopened! The Greenway south of E. 20th Street is now closed for Stuyvesant Cove Park south construction. Stuyvesant Cove Ferry terminal access will remain open throughout construction. Please review the revised detour map, which was presented at [CAG Virtual Meeting #25](#), and visit the [PA2 Construction Notice webpage](#) for further updates.

Community Construction Information

Community Impacts

- Vehicular travel lane closures, detours and new traffic patterns will be required.
- Cyclists and pedestrian detours will be required.
- Signage will be posted in advance within the affected areas. Traffic Enforcement Agents and flaggers will be present when necessary to assist vehicles and pedestrians.
- Public transportation will be maintained at all times.
- Emergency vehicle and pedestrian access to sidewalks will be maintained at all times.
- Water Service Interruptions: During the project there may be some service interruptions. To allow for water line replacement, existing water service must be temporarily shut off. Advance notice will be provided before any service interruption. Water service will be restored at the end of each night.

Environmental Monitoring

- Air, noise, and vibration monitors are active 24 hours/day, 7 days/week.
- Air monitoring summaries are available on the [ESCR Environmental Monitoring web-page](#), with verbal updates provided at [Community Advisory Group Meetings](#).
- The project follows all federal, state and local guidelines. To date construction activities have not exceeded National Ambient Air Quality Standards.
- The ESCR [Environmental Fact Sheet](#) can also be found on the ESCR website.

ESCR in the Community

ESCR W/MBE firm Spotlight



[Preferred Environmental Services](#) is a full service NYC Certified Women-Owned Business Enterprise (WBE) environmental consulting firm. Consulting work performed by the firm is at the direction of its President, Ms. Jill Haimson, a NYS Licensed Professional Geologist, who has

managed and negotiated environmental projects for more than 37 years under administrative consent orders with regulatory agencies as well as remediation programs performed under local, county or state authority. Preferred Environmental is performing environmental monitoring and oversight for the ESCR Project Area 2.

Work With Us

East Side Coastal Resiliency team hosted the first [in-person Quarterly Information Event](#) on October 19, 2022 at Tompkins Park Library. The ESCR team explored the [career pathways](#) within the ESCR project and construction industry with attendees. Industry experts shared [career resources](#), provided information on training opportunities and talked about their personal pathways. Participants shared their resumes and experiences, and received suggestions during the event. The ESCR team wants to thank NYC Department of Design and Construction, [Office of Diversity and Industry Relations](#) (NYC DDC ODIR), [NYC Department of Small Business Services](#) (NYC SBS), ESCR Contractors ([IPC](#) and [PCC](#)), [Lower East Side Employment Network](#) (LESEN), [Henry Street Settlement](#) and [Good Old Lower East Side](#) (GOLES) for participating in the event. We would also like to thank Tompkins Park Library for hosting the ESCR team.

On October 4th, the ESCR team attended the Henry Street Settlement Job Plus in-person job fair, where our contractor IPC hired a local individual to fill the Administrative Assistant opening. We look forward to future collaborations with our local partners.

In this quarter, the ESCR team also participated in [DDC East Side Coastal Resiliency Forum: Meet the Teams Presentation](#) on September 28, 2022. Program Management and Construction Management (PMCM) and contractor teams from ESCR and BMCR (Brooklyn Bridge-Montgomery Coastal Resiliency) presented the projects at the forum. The presentation is available on the ESCR website.



DDC ODIR at ESCR In-person Quarterly Information Event on October 19, 2022

Call for Art

The Call for Art panels in PA2 (Asser Levy Playground and Murphy Brother Playground) have been moved to East River Park. Please check the [Call for Art webpage](#) for updated locations and a digital gallery. Visit East River Park to see the selected artwork on-site.

Spring/Summer Tabling

This year, the ESCR Community Engagement team actively held tabling events in the project's surrounding community: Gouverneur Gardens, Abrons Art Center, NYCHA Riis, Wald and Baruch, Seward Park and Corlears Hook Park. Email ESCRCL1@ddccr.com if you are interested in having the ESCR Community Outreach Team table in your neighborhood or building. We are here to provide ESCR project information and respond to questions or comments in-person. Subject to availability.

Emergency Preparedness

The ESCR project has coordinated with New York City Emergency Management Department to develop a [webpage](#) of helpful links and resources for Emergency Preparedness. We encourage you to take a look.

Park Opening Update

Please check the table below for the opening update of East River Greenway, Park, Amenities, Bridge & Entrance, and NYC Ferry. (A graphic reference on page 3: PA1 construction area map)

For More Information:

Visit the ESCR website, www.nyc.gov/escr, to sign up to receive weekly Construction Bulletins, Community Advisories, and other project communications, as well as to learn more about community meetings and events, ESCR background, design, and construction, and opportunities to work with us.

Or Submit an Inquiry: www.nyc.gov/escr/contact

Questions? Preguntas? 问题?

Please contact our **Community Construction Liaisons (CCL)** for any project related inquiries/concerns you may have:

Project Area 1 CCLs:

Sonia Quinones (para mas información llame): 347-628-8724

Joyce Xin (欢迎中文咨询): 929-844-0407

Email: ESCRCL1@ddccr.com

Project Area 2 CCL:

Nadine Harris: 347-572-3057 & ESCRCL2@ddccr.com

Parallel Conveyance CCL:

Tannia Wokoun: sandrespc.ccl@gmail.com

| | | |
|------------------------------|---|--------------|
| East River Greenway | Between Montgomery Street to E. 10 th Street | Closed |
| | Between E. 10 th Street to E. 18 th Street | Open |
| | Between E. 18 th Street to E. 20 th Street | Closed |
| | North of E. 20 th Street | Open |
| Open Space | Corlears Hook Park: Dog Run, Playground, Ball field | Open |
| | Corlears Hook Park: Flagpole area | Closed |
| | East River Park: Passive Lawn | Partial Open |
| | East River Park: South of Stanton Street: Amphitheater, Ball Fields #1 to #4, Tennis Court | Closed |
| | East River Park: North of Stanton Street: Ball Fields #5 to #8, Track & Fields, BBQ, Playground, Basketball Court | Open |
| | East River Park: 12 th Street Lawn | Closed |
| | Murphy Brother Playground | Closed |
| | Stuyvesant Cove Park | Closed |
| | Asser Levy Playground | Open |
| Bridge & Entrance | Corlears Hook Bridge | Closed |
| | Corlears Hook Temporary Bridge | Open |
| | Delancey Street Pedestrian Bridge | Closed |
| | Houston Street Entrance | Open |
| | E. 6 th Street Pedestrian Bridge | Open |
| | E. 10 th Street Pedestrian Bridge | Open |
| NYC Ferry | Corlears Hook Ferry Terminal: Access @ Temporary Bridge | Open |
| | Stuyvesant Cove Ferry Terminal: Access @ E. 18 th St. | Open |

ESCR opening space table