



East Side Coastal Resiliency

The East Side Coastal Resiliency (ESCR) project is a coastal protection initiative, jointly funded by the City of New York and the federal government, aimed at reducing flood risk due to coastal storms and sea level rise. The ESCR project will protect 110,000 New Yorkers from the impacts of climate change by reducing flood risk to communities, properties, businesses, critical infrastructure, and public open spaces. In addition to providing flood protection, the project will strengthen and enhance waterfront spaces on Manhattan's East Side by improving accessibility, increasing ecological diversity, and delivering improved recreational amenities to a vibrant and highly diverse community. The ESCR project is among the largest and most technically complex infrastructure projects in New York City's history.

The ESCR team is currently constructing the 2.4 mile flood protection system consisting of floodwalls and floodgates that are designed to blend into the fabric of the community by integrating with local streets, the elevated East River Park, and the new landscape surrounding Corlears Hook Park, Murphy Brothers Playground, Stuyvesant Cove Park, and Asser Levy Playground.

ESCR Highlights for this quarter include the re-opening of [Asser Levy Playground](#) and the installation of floodgate 18 in Project Area 2 (PA2). The team is very proud of this milestone accomplishment and excited that the playground has reopened to the community within two years of the construction start.

If you visit the new playground, you will also see the [Community Call for Art](#) panels installed there, at Murphy Brothers Playground until Labor Day and at East River Park through the year (see page 5 for more details).

Also in this issue, we highlight ESCR's Envision Gold award on page 4.



DDC Group Photo with Mayor Adams at Asser Levy Playground

Project Area 1

East River Park and adjacent areas

Construction in East River Park continues

Work in Project Area 1 (PA1) is concentrated between Montgomery Street and East 15th Street, largely focused on East River Park. See [ESCR Newsletter 3](#) for more information on the background of Project Area 1 (PA1).



Corlears Hook Pedestrian Bridge dismantling work, July 2022



PA1 Floodwall at Greenway rendering (around Montgomery St.)

East River Park will be closed in phases over the next several years, keeping a minimum of 42% open space for public access at all the times. The [PA1 Construction Approach](#) aims to provide full flood protection to the community as quickly as possible while maintaining public and worker safety during construction. A more detailed [PA1 Construction Timeline](#) was presented at the [July 2022, Community Board 3 Parks Committee Meeting](#).

Currently East River Park from Montgomery Street north to Stanton Street including a small portion of Corlears Hook Park is closed for construction (see map below). Access to the Corlears Hook Ferry Terminal is available via the Corlears Hook Temporary Bridge which was opened on July 5, 2022. Though the Greenway is closed from Montgomery Street North to E 10th Street, pedestrians can access open areas of the park at E Houston Street, E 10th Street, E 6th Street and from Project Area 2 (PA2) in the north.

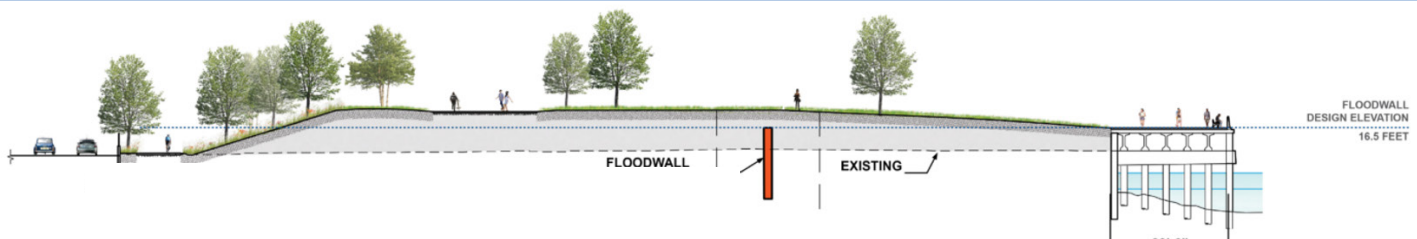
PA1 Current and Upcoming Work

- 1 Deep sewer work as well as esplanade removal and soil stabilization along the waterfront are in progress in the closed area of East River Park with the barges in use for material transit, reducing local truck traffic in the community.
- 2 The Con Edison utility work is progressing on the Greenway between E. Houston Street and E. 10th Street. See the [PA1 Access Map](#) for detailed pedestrian circulation and amenities, and follow all site signage. The East Houston Street retaining wall construction will start in the next quarter.
- 3 On July 5, 2022, the Corlears Hook temporary pedestrian bridge opened to the public, making way for a full FDR Drive overnight closure on July 10, 2022, to remove the center spans of the original Corlears Hook Bridge. Abutment removal and clearing activities are ongoing and will allow for work on the new accessible Corlears Hook Bridge.
- 4 The **first floodwall construction** for PA1 is starting along the Greenway from Montgomery Street to Cherry Street. The floodwall here will connect south under the FDR Drive to Gouverneur Gardens and north to the buried floodwall. This work necessitates overnight hours with an FDR Drive lane closure. Noise monitors are in place.
- 5 Con Edison utility upgrades will continue throughout the project area for the duration of the project. Work around the Montgomery Street / South Street intersection as well as near E. 10th Street and Avenue D are ongoing.



Project Area 1 (PA1) Construction Area, August 2022

FOR ILLUSTRATIVE PURPOSES
SUBJECT TO MODIFICATIONS



INLAND

- A. Mobilization & Removals
- B. Pile Installation, Sewer Replacement & Upgrades
- C. Floodwall Pile Installation & Concrete Foundation
- D. Concrete Floodwall
- E. Fill & Compaction
- F. Site Elements & Materials (roadway, sidewalks, parks elements)

WATERFRONT / ESPLANADE

- A. Soil Stabilization
- B. Remove Esplanade
- C. Install new combi-wall & cap wall
- D. Install New Esplanade
- E. Fill (as needed by location)
- F. Site Elements & Materials (esplanade & parks elements)

PA1 Inland and Waterfront Construction Work Sequencing

Construction Sequence for East River Park

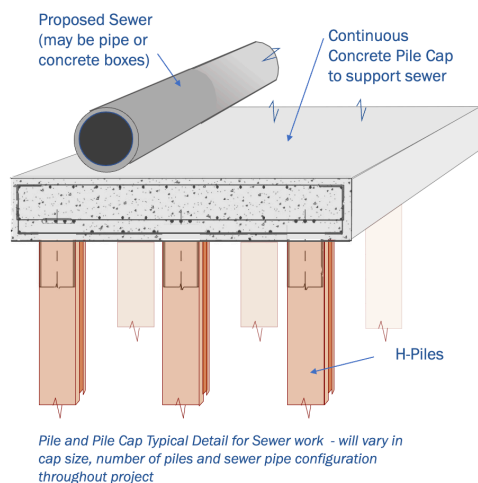
In [Newsletter 1 & 2](#), we detailed the step-by-step sequence of tasks for the **PA2 floodwall construction**:

- utility relocation work
- pile installation
- floodwall foundation
- floodwall construction
- park and roadway reconstruction

For **Project Area 1 (PA1)**, there are three construction work sequences occurring simultaneously:

1. Greenway Floodwall – above grade floodwall constructed in a sequence similar to PA2 sequence above (along the Greenway from Montgomery Street to Cherry Street)
2. East River Park Inland – floodwall within raised park, see graphic above for sequencing (north of Cherry Street)
3. East River Park Waterfront/Esplanade – see graphic above for sequencing (north of Cherry Street)

For the **Inland operations**, the contractor has completed a significant portion of the mobilization and removals and has begun the sewer replacement/upgrade and associated pile install work. The graphic here shows how the piles and pile cap will support the upgraded sewer lines which are part of



PA1 Inland Operations - Sewer and Piles Installation sketch

the larger parallel conveyance system installed to improve drainage during flooding events. For **Waterfront operations**, the esplanade removal is well underway and soil stabilization is just beginning.

What is Soil Stabilization?

Soil Stabilization is a process to improve the solidity of the existing soil. ESCR is installing a grid of **crushed stone columns** along the waterfront where coastal flooding and other extreme weather events could potentially impact the existing soil stability. First, an auguring machine is used to auger a deep hole in the soil. Next, the stone column rig injects a hollow pipe into the soil. Lastly, the crushed stone is fed into and vibrated down the pipe into the existing soil to form a stone column.



Soil Stabilization at East River Park Waterfront, July 2022

Project Area 2

Asser Levy Playground/Stuyvesant Cove Park/Murphy Brothers Playground

Asser Levy Playground is open!



Asser Levy Playground, May 2022

Work in Project Area 2 (PA2) is concentrated between East 15th Street and East 25th Street. Asser Levy Playground opened to the public on May 13, 2022, with a new playground, basketball court, water fountains, refurbished handball courts and flood protection. The playground and basketball court areas have also been rebuilt with resilient materials and play equipment that has been designed to withstand future flooding. In the event of a storm, the playground will be able to reopen more quickly due to these new resiliency features.

Floodgate 18, a 79-foot-long, 45-ton sliding steel floodgate, was installed at Asser Levy Playground on July 7. The wall and floodgate will protect the adjacent Margaret Cochran Corbin VA Campus and Hospital, as well as the park's recreation center and outdoor pool, allowing it to stay operational after a major storm.



Gate 18 installation at Asser Levy Playground, July 2022

With the northern portion of Stuyvesant Cove Park undergoing restoration, workers have moved into the portion south of E 20th Street, and have begun site clearing, utility relocation and pile install to continue floodwall operations. Access to the Stuyvesant Cove Ferry terminal will remain open through construction. Any detours will be communicated in advance to the community. The restored Stuyvesant Cove Park north of E 20th Street is expected to open in Fall 2022, with new pavement, sea rail, cast concrete seat walls and more resilient plantings. **To date, over 1,000 linear feet of floodwall and two flood gates have been installed in the project area!**

There will be changes to the Greenway access in the upcoming months, so be sure to review the revised detour maps which were presented at the [June 2022 Community Advisory Meeting](#).

Community Construction Information

Community Impacts

- Vehicular travel lane closures, detours and new traffic patterns will be required.
- Cyclists and pedestrian detours will be required.
- Signage will be posted in advance within the affected areas. Traffic Enforcement Agents and flaggers will be present when necessary to assist vehicles and pedestrians.
- Public transportation will be maintained at all times.
- Emergency vehicle and pedestrian access to sidewalks will be maintained at all times.
- Water Service Interruptions: During the project there may be some service interruptions. To allow for water line replacement, existing water service must be temporarily shut off. Advance notice will be provided before any service interruption. Water service will be restored at the end of each night.

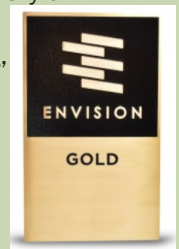
Environmental Monitoring

- Air, noise, and vibration monitors are active 24 hours/day, 7 days/week.
- Air monitoring summaries are available on the [ESCR Environmental Monitoring web-page](#), with verbal updates provided at [Community Advisory Group Meetings](#).
- The project follows all federal, state and local guidelines. To date construction activities have not exceeded National Ambient Air Quality Standards.
- The ESCR [Environmental Fact Sheet](#) can also be found on the ESCR website.

Sustainability

[East Side Coastal Resiliency Project Receives Envision Gold Award!](#)

Envision is a framework that encourages systemic changes in the planning, design, and delivery of sustainable, resilient, and equitable civil infrastructure through education, training, and third-party project verification. The Institute for Sustainable Infrastructure (ISI) is the organization that developed and manages the Envision process and reporting. In July of 2022, ISI awarded ESCR with an Envision Gold award.



"The ESCR project responds effectively to diverse stakeholder needs, applies the scientific evidence, and considers the lessons of extreme coastal weather — Hurricane Sandy in particular," said Institute for Sustainable Infrastructure Managing Director Melissa

Peneycad. “The outcome is a multi-benefit project adding resilience to climate change impacts and ultimately positioning the East Side as a sustainable community with exceptional performance from a quality-of-life perspective. We are pleased to award this project Envision Gold for sustainability.”

ESCR in the Community

Call for Art

DDC proudly celebrated the ESCR Community Call for Art Certificate recipients at an in-person event on June 22, 2022. View the [DDC Press Release](#) with quotes from the NYC DDC Commissioner, Council Member Rivera and Council Member Powers. We are grateful to everyone who participated in this event and congratulate the local artists selected.

The ESCR sponsored Community Call for Art features K-12 students and local artists in NYC. Artwork was judged on its creativity and responsiveness to given artwork themes centered on community and resiliency. Please visit East River Park, Asser Levy Playground, and Murphy Brothers Playground to see the selected artwork on-site and the [Call for Art](#) web-page to click through a digital gallery.



Call for Art, East River Park Track Fence

Work With Us

The East Side Coastal Resiliency (ESCR) project is a public investment that will help drive the City's economy and create jobs in New York City neighborhoods. The ESCR project has a dedicated team of individuals focused on hiring compliance and contracting opportunities. This team collaborates with Community Based Organizations (CBO's) and City agencies such as the [Lower East Side Employment Network](#) (LESEN), [Henry Street Settlement](#), [Good Old Lower East Side](#) (GOLES), and [NYC Department of Small Business Services](#) ([Workforce 1](#)). **Job opportunities** resources are posted on the ESCR Work with us web page. We encourage individuals and local M/WBE and Section 3 firms to review the ESCR opportunities, as well as the fact sheet outlining the [ESCR Subcontracting and Hiring Goals](#).

On May 25, 2022, the ESCR Project team hosted a [Spring Virtual Information Session](#) focused on creating or upgrading your resume package with one-on-one sessions open to all community members, from entry-level to experienced

individuals. During the session, we provided an overview of building a successful resume and reviewed existing City and community resources for assistance with resume and job interview preparation. The [presentation](#) and [live recording](#) as well as past sessions can be viewed on the [Work With Us](#) page of the ESCR website.



ESCR Earth Day at Seward Park, April 22 2022

Spring/Summer Tabling

This quarter, the ESCR Community Engagement team successfully held several tabling events at Gouverneur Gardens, Abrons Art Center, NYCHA Riis and Wald, and Seward Park. Email ESCRCL1@ddccr.com if you are interested in having the ESCR Community Outreach Team table in your neighborhood or building. We can provide ESCR handouts and respond to community inquiries in-person. Subject to availability.

Emergency Preparedness

The East Side Coastal Resiliency (ESCR) project has coordinated with New York City Emergency Management Department to develop a [web page](#) of helpful links and resources for Emergency Preparedness. We encourage you to take a look.

For More Information:

Visit the ESCR website, www.nyc.gov/escr, to sign up to receive weekly Construction Bulletins, Community Advisories, and other project communications, as well as to learn more about community meetings and events, ESCR background, design, and construction, and opportunities to work with us.

Or Submit an Inquiry: www.nyc.gov/escr/contact

Questions? Preguntas? 问题?

Please contact our **Community Construction Liaisons (CCL)** for any project related inquiries/concerns you may have:

Project Area 1 CCLs:

Sonia Quinones (para mas información llame):
347-628-8724

Joyce Xin (欢迎中文咨询): 929-844-0407

Email: ESCRCL1@ddccr.com

Project Area 2 CCL:

Nadine Harris: 347-572-3057 & ESCRCL2@ddccr.com