



## East Side Coastal Resiliency

The East Side Coastal Resiliency (ESCR) project is a coastal protection initiative, jointly funded by the City of New York and the federal government, aimed at reducing flood risk due to coastal storms and sea level rise. The ESCR project will protect 110,000 New Yorkers from the impacts of climate change by reducing flood risk to communities, properties, businesses, critical infrastructure, and public open spaces. In addition to providing flood protection, the project will strengthen and enhance waterfront spaces on Manhattan's East Side by improving accessibility, increasing ecological diversity, and delivering improved recreational amenities to a vibrant and highly diverse community. The ESCR project is among the largest and most technically complex infrastructure projects in New York City's history.

ESCR will create a 2.4 mile flood protection system that will consist of floodwalls and floodgates that are designed to blend into the fabric of the community by integrating with local streets, the elevated East River Park, and the new landscape surrounding Corlears Hook Park, Murphy Brothers Playground, Stuyvesant Cove Park, and Asser Levy Playground. The project will also involve significant investments in underground interior drainage improvements that will improve the capacity of the sewer system.

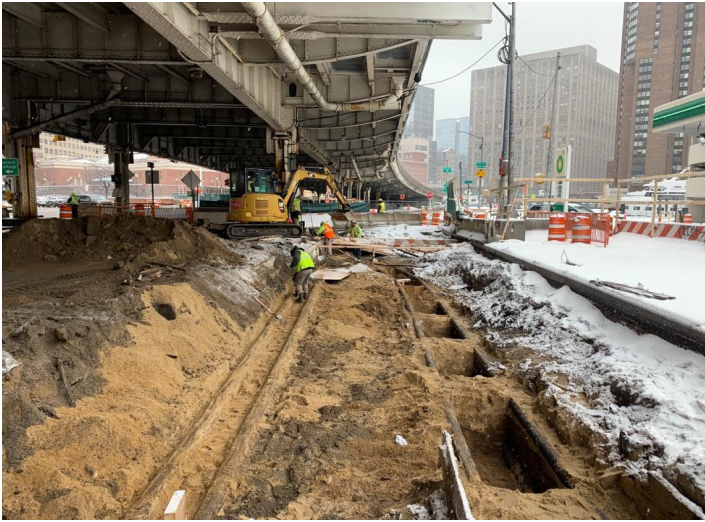
### Project Area 2

Construction in ESCR's Project Area 2 (PA2) encompasses work between East 15th and East 25th Streets and includes Asser Levy Playground, Stuyvesant Cove Park, Murphy Brothers Playground, as well as local streets around the East 15th Street Con Edison facility. This work will be broken into three main phases over the

next several years, with one and a half of the recreational facilities within PA2 remaining accessible to the public at all times. The first and current construction phase of PA2 is focused on Asser Levy Playground and the areas under the FDR Drive at East 23rd Street, and adjacent to the Solar One building in the north end of Stuyvesant Cove Park.

### Work Sequence

In order to build the flood protection, the heart of this project, all construction in PA2 will follow a similar sequencing of tasks. The first step is construction mobilization and site preparation, followed by utility relocations/upgrades. The next task on this project is pile installation. Once the piles are installed, we can begin wall foundation construction and flood wall construction. The final task will be park and roadway reconstruction. Quarter 1 focused on mobilization, site preparation, and utility relocations/upgrades.



*Excavation for utility relocation/upgrades under the FDR Drive, south of the East 23rd Street intersection*

### **Mobilization and Site Preparation**

Under this task, our contractors installed temporary construction fencing, and construction signage. They verified site conditions through site surveying and test pits to confirm subsurface conditions and the presence of utilities prior to any excavation. The mobilization and site preparation tasks included greenway and pedestrian rerouting & signage in coordination with the NYC DOT. The floodwall construction conflicts with the current greenway, so cyclists have been rerouted to the protected bike lanes along 1st and 2nd Avenues. In addition, air, noise, and vibration monitors were installed.

### **Utility Relocation/Upgrades**

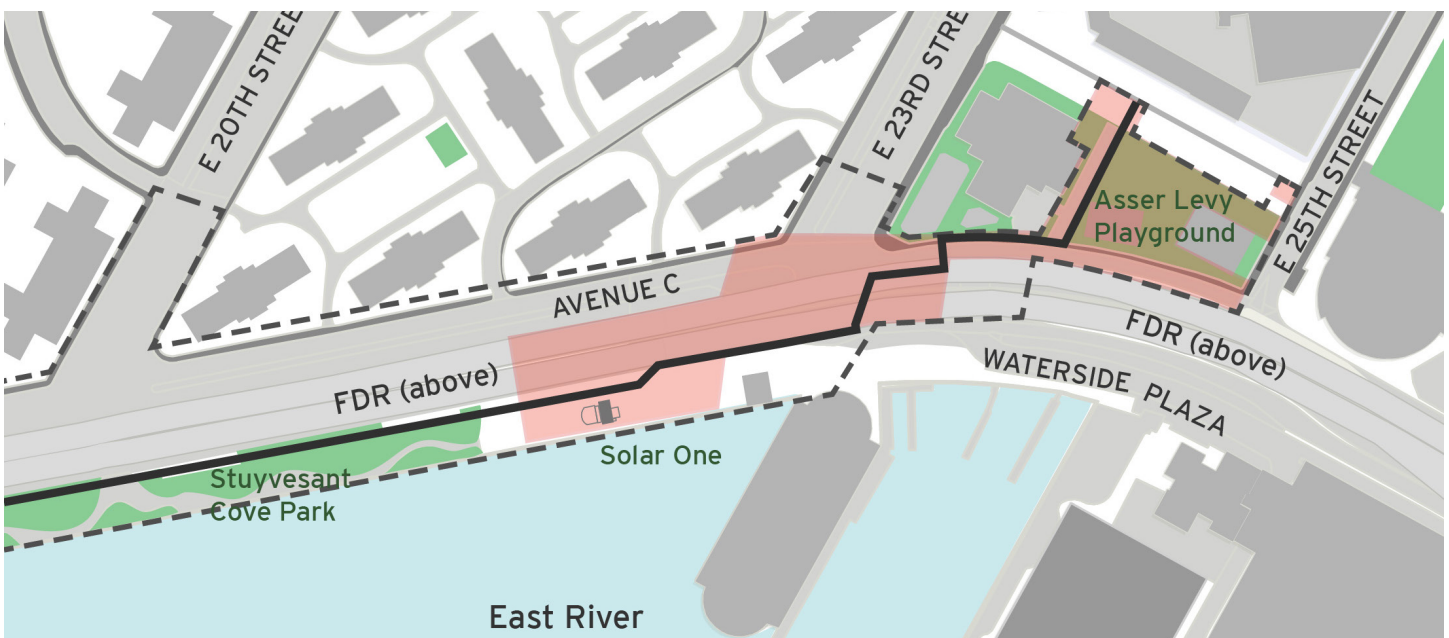
During this time, the contractor began construction activities at Asser Levy Playground. In coordination with NYC Parks, it

was determined that the handball court and track at Asser Levy Playground could remain open throughout construction. Traffic rerouting began at the intersection of East 23rd Street under the FDR and will continue throughout this phase of construction. While this intersection is under construction, NYPD has deployed Traffic Enforcement Agents (TEA) to assist with vehicular movement and the contractor has flaggers on-site to assist with pedestrian circulation.

Over the past three months, the contractor has been coordinating with ConEdison and other city agencies to complete scheduled utility relocations and upgrades, installation of sewer lines, manholes, and catch basins, and replacement of water mains to accommodate the upcoming piles and flood wall. Night work activities for utility relocation along the West Service Road began in January and is active from the hours of 10pm to 5am.

### **Upcoming Work**

Work scheduled for the next three months builds on the work completed within the first quarter. Traffic and pedestrian detours will continue with Community Advisory notifications as they change. Utility relocations and upgrades will also continue at East 23rd Street and along the East Service Road and West Service Road and under the Drive. Pile installation recently began at Stuyvesant Cove Park and will continue there as well as in Asser Levy Playground and at the intersection of East 23rd Street under the FDR Drive in preparation for the flood wall foundation. Please note that the Asser Levy Pool will be open throughout construction, from May 15, 2021 to September 15, 2021. All construction activities are subject to change based on conditions in the field.



*This map shows areas currently under construction in pink and the planned flood wall in black.*





Sheet piles installed at Stuyvesant Cove Park



Decorative informational panels at Asser Levy Playground

## Water Service Interruptions

During the project there will be some service interruptions. To allow for water line replacement, the existing water service must be shut off by closing the valves at either end of the section. Advance notice will be given for all planned interruptions. Water service will be restored at the end of each night.

## Community Impacts

- Air, noise and vibration monitors are active 24 hrs/day, 7 days/week.
- Vehicular travel lane closures and new traffic patterns will be required, as well as detours.
- Cyclists and pedestrian detours will be required.
- Signage will be posted in advance within the affected areas. Traffic Enforcement Agents and flaggers will be present when necessary to assist vehicles and pedestrians.
- Emergency vehicle and pedestrian access to sidewalks will be maintained at all times.
- Public transportation will be maintained at all times.

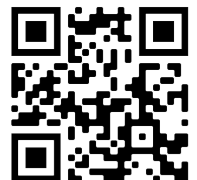
## Decorative Construction Fencing Panels

Illustrative project information panels were recently installed on construction fencing at Asser Levy Playground and Stuyvesant Cove Park. The panels share project goals and benefits with the community, help with wayfinding, and enhance the appearance of the construction site.

## Project Communications and Community Engagement

Welcome to our first ESCR Newsletter! In upcoming newsletters, we hope to share more about the construction techniques our contractors are using to build this landmark project. Our Community Engagement team also presents monthly at the CB6 Land Use Committee, CB3 Parks Committee, and the ESCR Community Advisory Group (CAG) meetings, where you can learn more about the project!

We encourage you to visit the **project website**, [www.nyc.gov/escr](http://www.nyc.gov/escr), to sign up to receive weekly Construction Bulletins, Community Advisories, and other project communications, as well as to learn more about community meetings and events, ESCR background, design, and construction, and opportunities to work with us.



## Community Construction Liaison (CCL)

Nadine Harris is the the Community Construction Liaison (CCL) for Project Area 2. Please contact Nadine for any project related inquiries/concerns you may have:

**Phone:** 347-572-3057

**Email:** [ESCRCL2@ddccr.com](mailto:ESCRCL2@ddccr.com)

Or visit [www.nyc.gov/escr/contact](http://www.nyc.gov/escr/contact) to make an inquiry online.