



East Side Coastal Resiliency

The East Side Coastal Resiliency (ESCR) project is a coastal protection initiative, jointly funded by the City of New York and the federal government, aimed at reducing flood risk due to coastal storms and sea level rise. The ESCR project will protect 110,000 New Yorkers from the impacts of climate change, by reducing flood risk to communities, properties, businesses, critical infrastructure, and public open spaces. In addition to providing flood protection, the project will strengthen and enhance waterfront spaces on Manhattan's East Side by improving accessibility, increasing ecological diversity, and delivering improved recreational amenities to a vibrant and highly diverse community. The ESCR project is among the largest and most technically complex infrastructure projects in New York City's history.

ESCR Highlights

The ESCR project has made great strides in 2024. Notably, the team reached substantial completion of **Project Area 2** and reopened Murphy Brothers Playground to the community! This follows the reopening of Stuyvesant Cove Park in 2023 and Asser Levy Playground in 2022.

In **Project Area 1**, two of three pedestrian bridges were installed on site, and the first new amenities in East River Park were opened to the public!

This edition also includes exciting updates on the **Parallel Conveyance** project's progress this year, along with recent **Community Engagement and Work With Us** events!

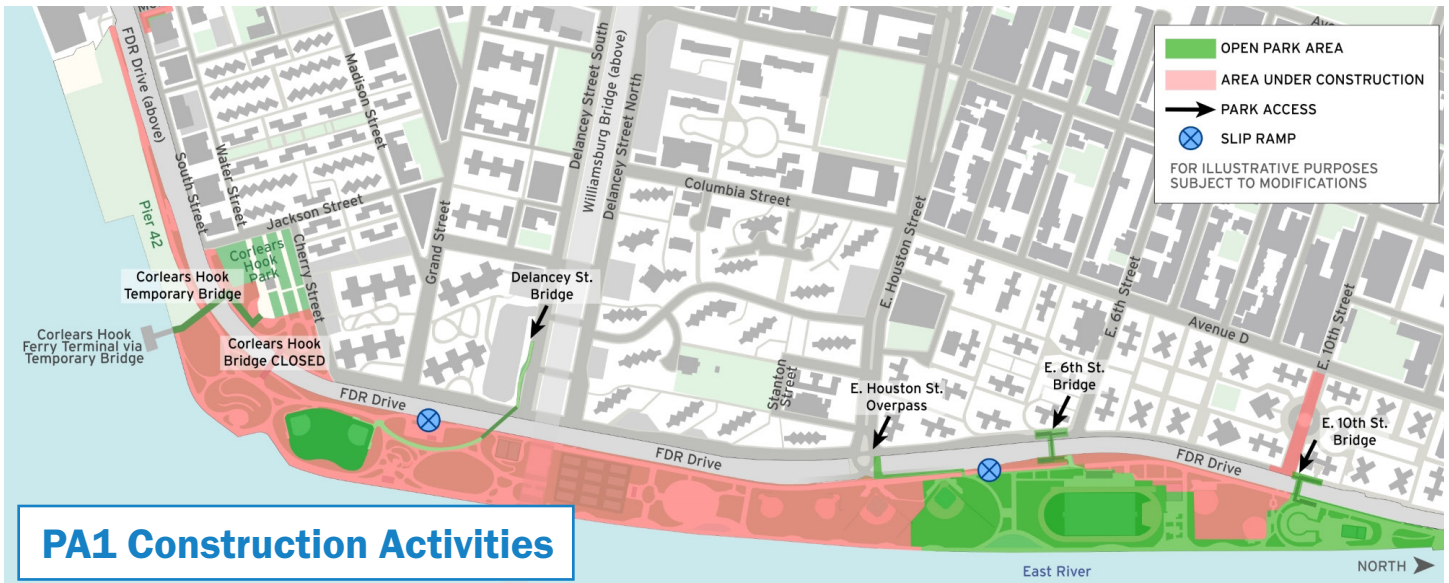
For more information on earlier ESCR construction updates, be sure to check out our [previous newsletters](#).



Murphy Brothers Playground on Avenue C, October 2024



Ballfields 1 & 2 in East River Park, October 2024



Project Area 1

East River Park and adjacent areas

Work in Project Area 1 (PA1) is concentrated between Montgomery Street and E. 15th Street, largely focused on East River Park. East River Park will be closed in phases over the next several years, keeping a minimum of 42% open space for public access at all times.

Currently, much of East River Park from Montgomery Street to E. Houston Street, including a portion of Corlears Hook Park, is closed for construction. Visitors can access open areas of the park from the E. Houston Street north ramp and the bridges at E. 6th Street and E. 10th Street.

Park Amenities Update: On Labor Day 2024, the ESCR team was thrilled to reopen Ballfields 1 & 2, accessible from the new Delancey Street Pedestrian Bridge, to the community! These amenities are the first to reopen under the PA1 contract. The new fields feature turf with an advanced drainage system for better maintenance, along with new stadium lighting set to come online in 2025. The \$32 million Delancey Street Pedestrian Bridge is fully ADA compliant, replacing a much smaller bridge that was not fully accessible.



Corlears Hook Bridge installed (left); Ballfields 1 & 2 (center) and Delancey Street Bridge (right) opened to the public, November 2024

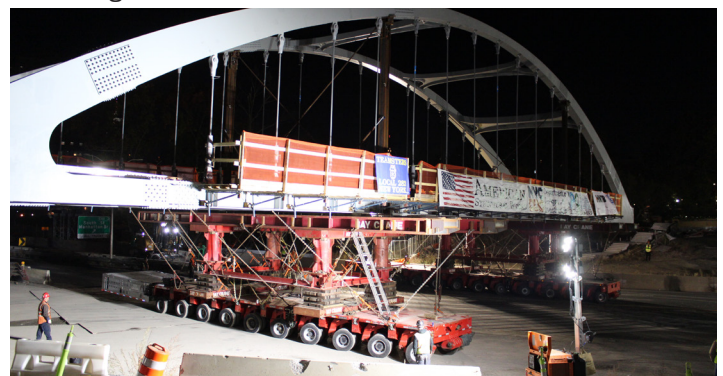
Bridge Work: Just south of the Delancey Street Bridge, work progressed on the Corlears Hook Bridge. Like Delancey Street, the bridge was manufactured in Italy and shipped in pieces to East River Park. Much of the assembly took place on site in September. In mid-October, an overnight, full closure of the FDR Drive allowed for the bridge to be rolled into place via Self-Propelled Modular Transports (SPMTs). In the weeks that followed its installation, the concrete deck was placed and work continued on its east and west approaches.

The Corlears Hook Bridge is expected to open with other amenities south of the Williamsburg Bridge in Spring 2025. Next year, work will also move forward at E. 10th Street for the final bridge to be installed.



Ribbon cutting at Ballfields 1 & 2, September 2024

The opening celebration took place on September 10, with city officials and other neighborhood leaders in attendance. It was also exciting to be joined by many members of the community who have given so much to the project!



Corlears Hook Bridge installed via SPMTs, October 2024



Pavers installed on esplanade south of Williamsburg Bridge, December 2024

Park Finishes: As Phase 1 work continues, many parts of the park south of the Williamsburg Bridge are getting closer to their final appearance. On the esplanade, hundreds of pavers have already been laid. Many elements of the Nature Exploration area have been installed, including some wooden features, which utilize repurposed lumber from trees that were removed during early stages of construction.



Salvaged wood in place at Nature Exploration Area, December 2024



Multiuse Turf striped with soccer goals installed, December 2024

The Multiuse Turf is painted and nearly ready for play, while backstops and hoops have been installed at the southern Basketball Courts. At the Amphitheater, precast concrete seating is nearly complete. Combined with lawn capacity and accessible seating, this will allow for roughly 2,000 spectators to enjoy a show!



Rendering of Amphitheater stage and seating area

Tree Plantings: In one of the most visible signs of the park's return, trees and shrubs began being planted near the Williamsburg Bridge and in areas further south. Their arrival on site is just one part of a meticulous selection process, as you can see in the Tree Tagging Spotlight below. More than 450 trees have been planted during this planting season, along with 2,300 perennials and shrubs. By the end of PA1 work, roughly 2,000 new trees will be planted in East River Park, comprising over 50 different species. To create a more resilient plant community, those species have been selected based on their ability to withstand salt spray, increased precipitation, strong winds, and extreme weather.



Trees and shrubs planted near esplanade, December 2024

Tree Tagging Spotlight:

Selecting the right trees to be planted in East River Park is a meticulous process, led by skilled Landscape Architects. Here's an overview of the major steps involved:

- 1 Tagging & Selection:** Contractors source plant materials from nurseries, which are then inspected by Landscape Architects. Each tree is assessed for health, form, growth habits, size, height, and caliper. Once approved, the tree is tagged with a unique identifier. This ensures the ESCR team can monitor the tree's location and health.
- 2 Delivery & Inspection:** Trees are protected with tarps and transported with care. Upon delivery, each tree undergoes a thorough inspection for structural damage, root ball integrity, and overall health.
- 3 Planting & Protection:** The tree pit is dug to the depth of the root ball and twice its width. The tree is positioned carefully, with the burlap removed from the top third of the root ball. Stakes are installed in a triangular formation for stability, and the pit is backfilled with topsoil. These steps, plus ESCR's new irrigation system, ensure the tree is protected and ready to thrive in its new environment.

E. Houston Art Panels: In an effort to highlight the creative talents of ESCR's neighbors, we have displayed some incredible community art on our construction fencing at the the E. Houston Street East River Park entrance. These pieces were originally submitted and displayed as part of the 2021 Call for Art program, and we are very excited to share them with the public once more.

Please be sure to visit the area and check out this art in person! In the meantime, you can learn more and view the artwork digitally on our [website](#).



Community art panels installed at E. Houston Street, November 2024

Microtunneling Spotlight:

At E. 10th Street, new sewer lines are being installed to expand drainage capacity, which will better protect the community from flooding. As part of this work, the upgraded underground stormwater infrastructure will be connected to the new system under East River Park. To make this connection and minimize traffic impacts, a **120-foot tunnel** was carved deep beneath the FDR Drive. The tunnel will house a new 42-inch sewer line in a steel sleeve, connecting the upgraded system to the main interceptor sewer line.

In preparation for this activity, crews made two major excavations on either side of the highway. The **launching pit**, located in East River Park, was over 26 feet deep, while the **receiving pit** on the E. 10th Street side of the FDR Drive was roughly 25 feet deep.

After months of preparation, the microtunneling machine arrived on site in mid-December and was then carefully lowered into the launching pit for drilling to begin. This operation was highly complex, requiring the team to safely and efficiently confront unexpected obstructions in the machine's path. These included historic debris, like brick, concrete, wood, and other materials used to increase the land area of Manhattan throughout its history.

The microtunneling operation was a **huge success**, with the boring machine breaking through its receiving pit just a few days after it began drilling!



Launching pit construction, October 2024



Microtunneling machine being lowered into launching pit in East River Park, December 2024



Microtunneling machine breaking through receiving pit in E. 10th St., December 2024



Murphy Brothers Playground reopened to the public, October 2024

Project Area 2

Asser Levy Playground/Stuyvesant Cove Park/Murphy Brothers Playground

Work in Project Area 2 (PA2) is concentrated between E. 15th Street and E. 25th Street, including three neighborhood parks. Asser Levy Playground reopened to the public in 2022 with a new floodwall, floodgate, and a reconstructed, resilient playground and basketball court. Much of Stuyvesant Cove Park reopened in 2023 with upgraded amenities, and new plantings that can withstand salt spray. Murphy Brothers Playground reopened in 2024 with flood protection woven into the park, alongside new amenities and landscaping.

In a very exciting milestone for ESCR, Project Area 2 reached substantial completion in October, ahead of schedule and under budget! This achievement came as Murphy Brothers Playground reopened to the public, featuring new tee ball fields, dog runs, basketball hoops, and playground equipment, and by the end of November, new plantings!

In the months ahead, the PA2 team will work through its punch list items. These are final touches or minor fixes that need to be taken care of before the responsible parties take full ownership of the amenities, equipment, and infrastructure that were installed under ESCR. As this work goes on, we will continue to share weekly bulletins and advisories on our website. Near the E. 23rd Street entrance, construction is ongoing at the Solar One facility under a project managed by the New York City Economic Development Corporation.

Thank you for following along with the PA2 contract, and we look forward to seeing you in the new public spaces!



New plantings at Murphy Brothers Playground, November 2024



Stuyvesant Cove Park at sunrise, October 2024



NYC Mayor Eric Adams speaks at PA2 ribbon cutting event, October 2024

PA2 Wrapped

Major project metrics



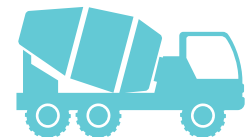
130
new trees



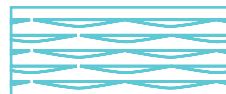
9,200
cubic yards
of new fill



1.65 million
pounds of rebar



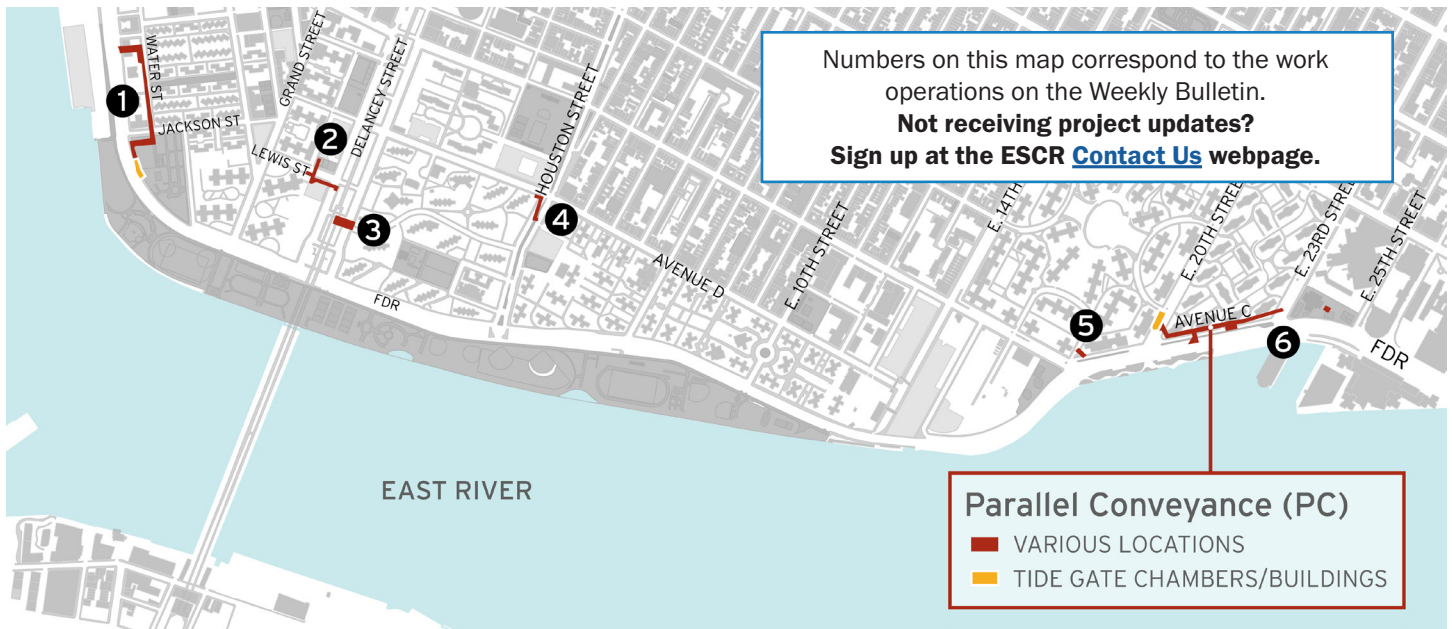
7,850
cubic yards
of concrete



3,129
linear feet of
floodwall



12
deployable
floodgates



Parallel Conveyance (PC)

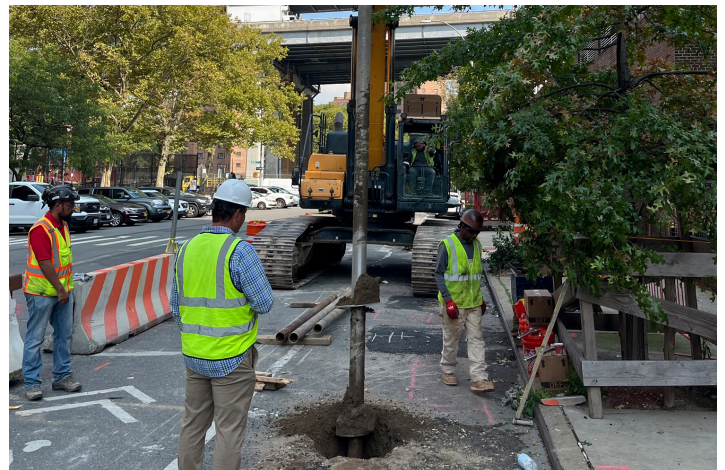
Various locations from Montgomery Street to E. 25th Street

The Parallel Conveyance (PC) project is upgrading the sewer system to provide flood protection during storms. While PA1 and PA2 protect the community from coastal/tidal flooding and saltwater, the PC upgrades will protect the community during heavy rainfall events. The project optimizes the existing stormwater system by adding new drainage parallel to the existing infrastructure.

During the second half of the year, the PC team made significant progress on deep sewer work in its southernmost construction areas. This includes new sewer lines on Water Street and Gouverneur Slip East, which will expand drainage capacity during major storms. Because the sewer system sits beneath other utilities, excavations for this work are major undertakings. During this work, the ESCR team also identifies

and removes abandoned water mains and private utility lines. In the beginning of 2025, similar work is taking place in this area on Jackson Street, near Corlears Hook Park.

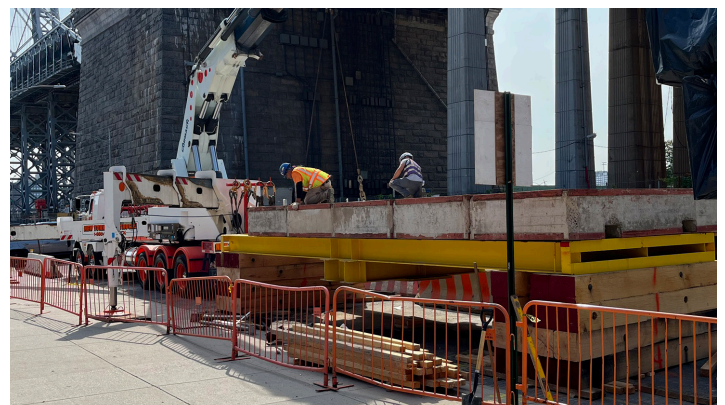
In other areas of the PC project, test piles have been used to determine the load capacity of piles. When these tests are complete, permanent piles are installed to support the new stormwater and drainage infrastructure. The heavy, deep sewer work is expected to begin in these areas in 2025.



Installation of test pile at Lewis Street, October 2024



Deep sewer work in Water Street, September 2024



Testing pile load capacity on Delancey St. North, October 2024

ESCR in the Community

Community Outreach Events

The ESCR Community Engagement team will continue coordinating with the project's surrounding community to attend tenant/resident association meetings and Family Days, along with hosting our own tabling events. We also regularly present construction updates at CAG meetings and Community Board 3 Parks Committee meetings. Events during the second half of this year included:

7/30/24: ESCR + Workforce1 Tabling at Corlears Hook Park

8/1/24: NYCHA Riis Houses TA Meeting

8/13/24: ESCR Tabling at NYCHA Baruch Houses

8/22/24: ESCR Tabling in East River Park

9/14/24: ESCR Tabling at NYCHA Riis Houses Family Day

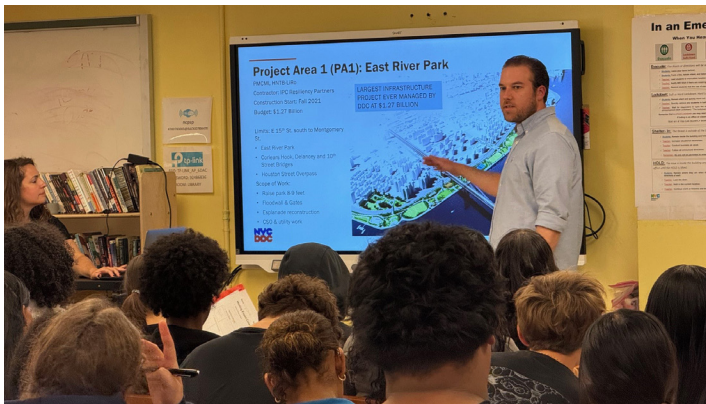
10/8/24: Gouverneur Gardens TA Meeting

10/24/24: NYCHA Vladeck House TA Meeting

10/29/24: ESCR Tabling at Rep. Goldman's Hurricane Sandy Anniversary Emergency Preparedness event

11/2/24: ESCR Tabling at the Friends of Corlears Hook Park Halloween Party

The ESCR team also provides educational presentations to NYC students of all ages through the ESCR to Your School program. The presentations cover the project and background and can be modified to suit all grade levels. For more information, visit our [website](#).



ESCR to Your School presentation for highschoolers, October 2024

Please email ESCRCL1@ddccr.com if you are interested in having the ESCR Community Engagement team table in your neighborhood, or if you'd like the team to present construction updates to your building. Subject to availability.

Work With Us

The East Side Coastal Resiliency (ESCR) project is a public investment that will help drive the City's economy and create jobs in New York City neighborhoods. Information on training, careers and contracting opportunities are posted on the [Work With Us webpage](#). We encourage individuals and local MWBE and Section 3 firms to review these opportunities and resources, as well as the factsheet outlining the [ESCR Subcontracting and Hiring Goals](#).



DDC Construction Career & Training Resource Fair, December 2024

At our virtual ESCR Work With Us Quarterly Information Session in December, attendees heard from community organizations about construction training programs and cost-free resources to pursue credentials and experience.

Throughout the second half of the year, the ESCR Community Engagement and Hiring teams joined partner organizations, including NYC DDC for career-oriented events, including:

9/24/24: Lower East Side Employment Network (LESEN) Fall 2024 Job Fair at Manny Cantor Center

12/4/24: DDC Manhattan Construction Career & Training Resource Fair

12/6/24: Henry Street Settlement Job Fair

12/10/24: ESCR Virtual Quarterly [Information Session](#)

The goal of these events is to provide residents with the latest construction updates, along with information on job and training opportunities. The ESCR Team is always working to make our hiring events helpful and relevant to the community. Please submit an inquiry on the [Work With Us webpage](#) if you have any questions or want to submit your resume for review.

ESCR W/MBE firm Spotlight

AEIS LLC is a certified MWBE/DBE/SBE firm specializing in Testing, Inspection, and Certification services for infrastructure projects across the New York Metropolitan area. Renowned for expertise in metallurgy and Non-Destructive Testing (NDT), AEIS ensures structural integrity and safety for critical infrastructure.



In February 2022, AEIS joined the ESCR PA1 project to provide quality assurance and quality control functions, including performing daily inspections and tests on site and in fabrication shops, submitting reports for deep foundations; soil excavation, fill, compaction, and testing; precast and cast-in-place concrete; forms and rebar work; asphalt pavements; and structural steel, including bridge assembly, bolting, welding, and painting.

With extensive experience in environmental projects, bridges, highways, tunnels, and public works, AEIS LLC is a trusted partner in building resilient, sustainable infrastructure that stands the test of time. Thank you AEIS!

East River Greenway	From E. 10th Street to E. 25th Street	Open
	From Montgomery Street to E. 10th Street	Closed
PA2 Parks	Stuyvesant Cove Park	Open*
	Asser Levy Playground	Open
	Murphy Brothers Playground	Open
Corlears Hook Park	Dog Run	Open
	Ballfield	Partially Open
	Playground & Flagpole area	Closed
East River Park	North of E. Houston Street: Ballfield 6, Track & Field, BBQ, Playground, Basketball	Open
	North of E. Houston Street: Ballfields 7 & 8, 12th Street Lawn	Closed
	South of E. Houston Street: Ballfields 1 & 2	Open
	South of E. Houston Street: Ballfields 3 to 5, Tennis Court, Amphitheater, Passive Lawn	Closed
Bridges & Entrances	Stuyvesant Cove Park E. 23rd Street Entrance	Closed*
	Greenway From Stuyvesant Cove Park	Open
	E. 10th Street Pedestrian Bridge	Open
	E. 6th Street Pedestrian Bridge	Open
	Houston Street Entrance	North Ramp Open
	Delancey Street Pedestrian Bridge	Open
	Corlears Hook Bridge	Closed
	Corlears Hook Temporary Bridge	Open
	Shared Use Path from Montgomery Street	Closed
NYC Ferry	Stuyvesant Cove Ferry Terminal	Open
	Corlears Hook Ferry Terminal (via Temporary Bridge)	Open

*Stuyvesant Cove Park remains closed north of Peter Cooper Road due to Solar One construction

Park Opening Update

Please check the table above for current status of East River Park, Greenway, amenities, entrances, and NYC Ferry access.

Community Construction Information

Community Impacts

- Vehicular travel lane closures, detours and new traffic patterns will be required.
- Cyclists and pedestrian detours will be required.
- Signage will be posted in advance within the affected areas. Traffic Enforcement Agents and flaggers will be present when necessary to assist vehicles and pedestrians.
- Public transportation will be maintained at all times.
- Emergency vehicle and pedestrian access to sidewalks will be maintained at all times.
- Water Service Interruptions: During the project there may be some service interruptions. To allow for water line replacement, existing water service must be temporarily shut off. Advance notice will be provided before any service interruption.

Environmental Monitoring

- Air, noise, and vibration monitors are active 24 hours/day, 7 days/week at locations required for construction.
- Air monitoring summaries are available on the [ESCR Environmental Monitoring webpage](#), with verbal updates provided at [CAG meetings](#).
- The project follows all federal, state and local guidelines. To date, construction activities have not exceeded National Ambient Air Quality Standards.
- Check out the [ESCR Environmental Fact Sheet](#) for more!

For More Information:

Visit the ESCR website, nyc.gov/escr, to sign up for weekly Construction Bulletins, Community Advisories, and other project communications, as well as to learn more about community meetings and events, ESCR background, design, and construction, and opportunities to work with us. Or submit an inquiry: nyc.gov/escr/contact

Questions? Preguntas? 问题?

Please contact our **Community Construction Liaisons (CCLs)** for any project related inquiries/concerns you have:

Project Area 1 CCLs:

Pauline Chan (欢迎中文咨询): 929-717-9015
Vanessa Gomez (para mas información llame): 347-628-8724
Email: ESCRCL1@ddccr.com

Project Area 2 CCL:

Nadine Harris: 347-572-3057
Email: ESCRCL2@ddccr.com

Parallel Conveyance CCL:

Tannia Wokoun: 914-313-6863
Email: sandrespc.ccl@gmail.com



ESCR Inquiry Tool

Happy Holidays

From all of us on the ESCR team, we wish you a happy and healthy holiday season! We look forward to bringing you more exciting project updates in 2025!