

East Side Coastal Resiliency Construction Update

CB3 Parks Committee Meeting
Virtual Meeting
July 14, 2022

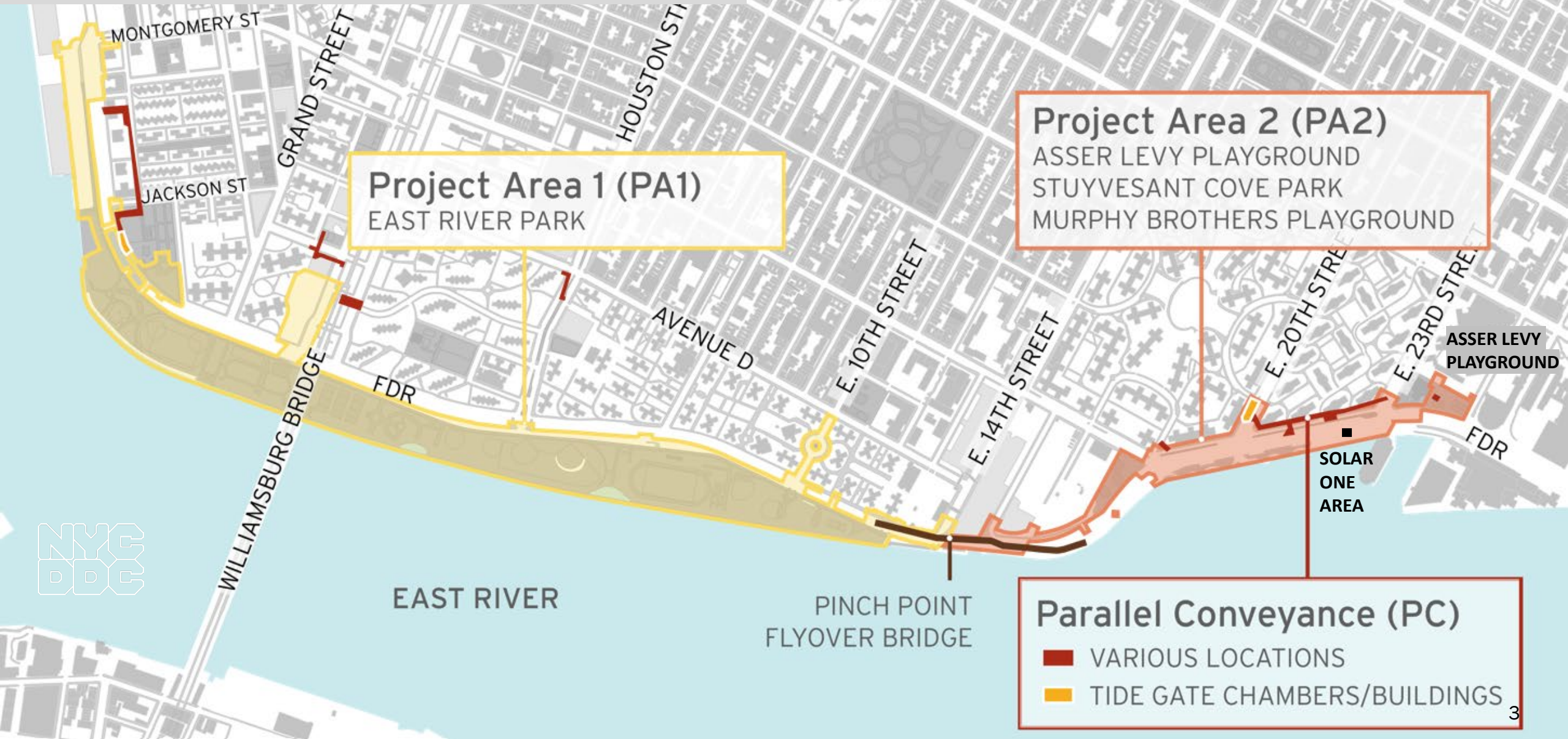


Mayor's Office of
Resiliency

Highlights

- Overview of Contracts
 - Project Area 2
 - Project Area 1
- What We've Heard

PROJECT AREA OVERVIEW



Overview of Contracts

Project Area 1 (PA1)

- NTP issued August 16, 2021
- East River Park partial closure south of Stanton Street & partial Greenway closure to E. 10th Street
- partial closure of Corlears Hook Park & passive lawn
- Delancey St. & Corlears Hook pedestrian bridges removed. Corlears Hook temp ped Bridge installed.
- ongoing ConEd Work
- esplanade removal, soil stabilization and deep sewer work in progress
- floodwall construction activities begin around Montgomery Street

Project Area 2 (PA2)

- Asser Levy Playground Open
 - Gate 18 installed
- Stuyvesant Cove Park including Solar One Area under construction
 - over 1,000 ft of floodwall installed
 - Gate 14 installed
 - site restoration north of E 20th St. underway

Parallel Conveyance (PC)

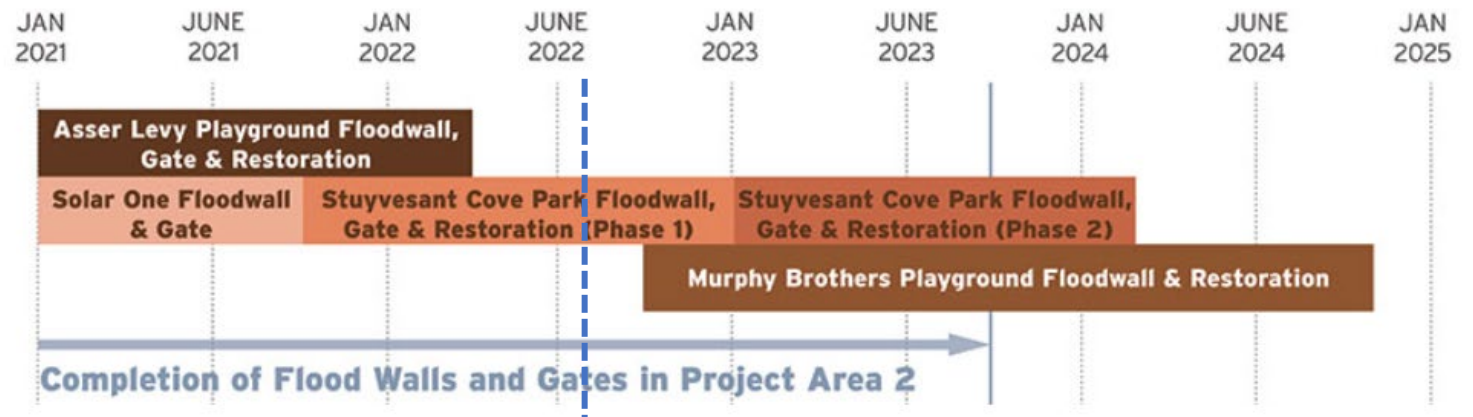
- contract awarded in May
- potential fall 2022 construction start
- contract duration is approximately 4 years

Project Area 2

PA2 | Construction Progress

ALL WORK IS SUBJECT TO CHANGE

1. Stuyvesant Cove Park north of E 20th St.:
 - seat wall construction and grading
 - Solar One temporary pavement install in progress
2. Stuyvesant Cove Park south of E 20 St:
 - site prep for pile install
 - **ferry access will remain open**
3. E 23rd St. Intersection:
 - utility work & floodwall construction
4. West Service Road:
 - floodwall construction
5. FDR Dr. NB exit 7 ramp:
 - pile installation and ECS work under FDR
6. E 15th Street between Ave C and FDR Dr. within Con Edison Facility
 - sewer reconstruction
7. Avenue C between E 20 St and E 18 St



PA2 | Current Greenway Access

- Stuyvesant Cove Park under construction
- Stuyvesant Cove Park Ferry access remains open and is accessible from E18th St E20th St via the Greenway
- the Greenway from E20th St south will remain open until the Greenway from E20th St north reopens



PA2 | Greenway Access Look-ahead

Fall 2022

- Greenway from E 20th St heading north will reopen
- Greenway from E20th St south will close and access to East River Park from Stuyvesant Cove Park will end
- **Stuyvesant Cove Park Ferry** access will remain open
- More details and dates to follow



PA2 | Construction Photos



Asser Levy Playground Gate 18 install July 2022

PA2 | Construction Photos



Asser Levy Playground Gate 18 install July 2022



PA2 | Construction Photos



Stuyvesant Cove Park esplanade pavement and seat wall in progress July 2022

Project Area 1

PA1 | July 2022 Construction Activities

ALL WORK IS SUBJECT TO CHANGE

1. Soil stabilization activities and esplanade dismantling along the waterfront. **Deep sewer activities and pile install.**
2. Delancey Street utility, pile and abutment work.
3. Corlears Hook Park partial closure. Temporary bridge installed. Corlears Hook bridge removed. **Overnight work to remove additional sections & abutments week of July 18.**
4. Passive lawn partial closure for utility work.
5. ConEd utility work near Montgomery Street & South Street.
6. **Montgomery St. overnight work for pile installation prep and activities.**

7. ConEd work in Shared Use Path around E. Houston Street will be followed by ESCR retaining wall work.
ConEd work to E. 10th Street will continue for 6-8 months.
8. **ConEd utility upgrades at E. 10th Street continue.**
9. Ongoing partial FDR lane closures continue at various locations.

Weekly Bulletins & Advisories are issued with construction activities.



PA1 | July 2022 Construction Activities

ALL WORK IS SUBJECT TO CHANGE

Floodwall Operations at NB FDR Dr.

- Overnight work due to lane closure for approximately 3-4 months
- Work activities will vary during this time with vibratory pile install anticipated for approximately 6-8 weeks
- PMCM and DOT are reviewing work activities and lane closure needs to determine if work hours can be shifted



Community Advisory

East Side Coastal Resiliency
www.nyc.gov/escr

EAST SIDE COASTAL RESILIENCY

Project # SANDRESM1 | Borough: Manhattan | Issue Date: 07/08/2022
The East Side Coastal Resiliency (ESCR) Project is an initiative to provide long-term flood protection on the east side of Manhattan.

Nightwork: Floodwall Operations at NB FDR Dr. from Montgomery St. to Jackson St.
Starting week of July 18th, 2022
10:00 pm to 5:30 am
Ongoing for several months

To facilitate construction of the floodwall, preparation activities for pile install will necessitate overnight work with FDR lane closures. After preparation activities, overnight pile install will begin. Noise monitors are in place.

FDR onramp Exit #3 northbound entrance (Montgomery Street) will remain open unless otherwise indicated. See weekly bulletin for more information.

Questions? ¿Preguntas? 问题?
PA1 Community Construction Liaison (CCL) | Email: ESCRCL1@ddccr.com
Sonia Quinones, para mas información llame, 347-628-8724
Joyce Xin, 欢迎中文咨询, 929-844-0408
Inquiries | Consulta en Línea | 线上咨询: www.nyc.gov/escr/contact

PLEASE NOTE: Due to unforeseen conditions (weather, field conditions, etc.) it may become necessary to change some scheduled work locations and operations. During non-construction hours emergency situations, please contact the New York City Government Services and Information Hotline at 311 or Universal Emergency Number 911.

Community Advisory

East Side Coastal Resiliency
www.nyc.gov/escr

EAST SIDE COASTAL RESILIENCY

Project # SANDRESM1 | Borough: Manhattan | Issue Date: 07/13/2022
The East Side Coastal Resiliency (ESCR) Project is an initiative to provide long-term flood protection on the east side of Manhattan.

Nightwork: Corlears Hook Bridge Removal Activities and FDR Drive Lane Closures continue
Week of July 18th, 2022
10:00 pm to 5:30 am

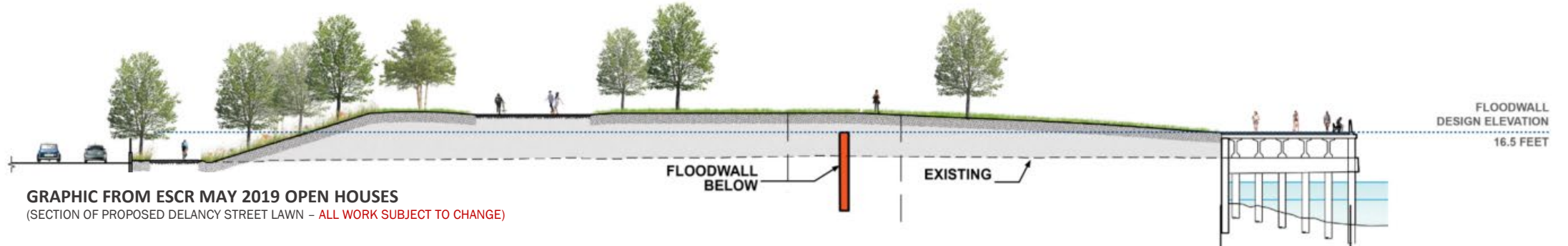
Corlears Hook Bridge removal activities will necessitate overnight work and lane closures of the FDR Drive northbound and southbound between Montgomery Street and E. Houston Street. Vehicles should follow all posted signs. Noise monitors are in place.

Questions? ¿Preguntas? 问题?
PA1 Community Construction Liaison (CCL) | Email: ESCRCL1@ddccr.com
Sonia Quinones, para mas información llame, 347-628-8724
Joyce Xin, 欢迎中文咨询, 929-844-0408
Inquiries | Consulta en Línea | 线上咨询: www.nyc.gov/escr/contact

PLEASE NOTE: Due to unforeseen conditions (weather, field conditions, etc.) it may become necessary to change some scheduled work locations and operations. During non-construction hours emergency situations, please contact the New York City Government Services and Information Hotline at 311 or Universal Emergency Number 911.

PA1 | Construction Work Sequencing

ALL WORK IS SUBJECT TO CHANGE



INLAND

- A. Mobilization & Removals
- B. Pile Installation, Sewer Replacement & Upgrades
- C. Floodwall Pile Installation & Concrete Foundation
- D. Concrete Floodwall
- E. Fill & Compaction
- F. Site Elements & Materials (roadway, sidewalks, parks elements)

WATERFRONT / ESPLANADE

- A. Soil Stabilization
- B. Remove Esplanade
- C. Install new combi-wall & cap wall
- D. Install New Esplanade
- E. Fill (as needed by location)
- F. Site Elements & Materials (esplanade & parks elements)

PA1 | Construction Photos



Corlears Hook Bridge Removal July 10, 2022



PA1 | Construction Photos



Shoring for Sewer install

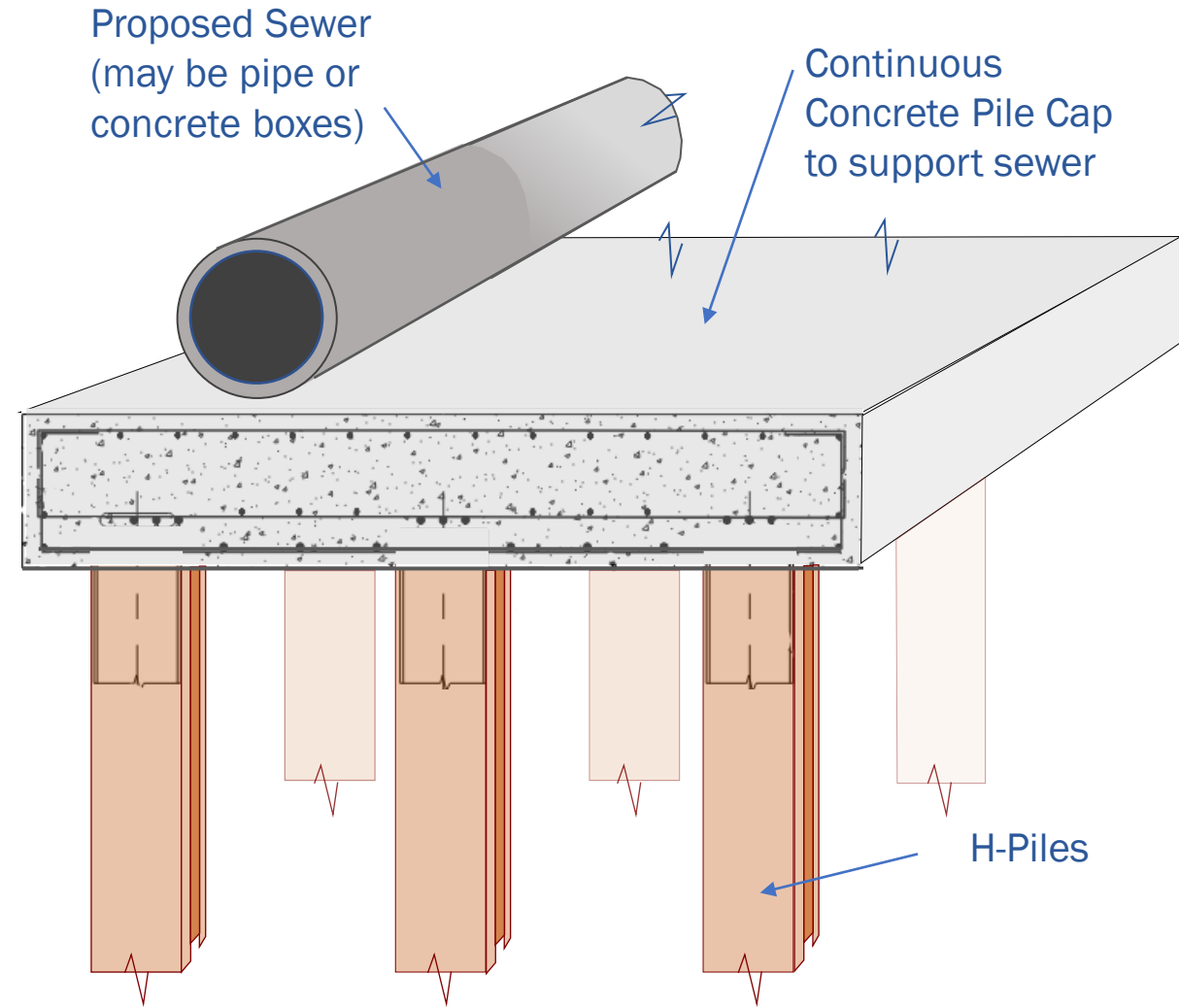


Dewatering operation

PA1 | Construction Photos



Shoring and markers for Pile install related to Sewer work – red dots indicate locations of H-Piles



Pile and Pile Cap Typical Detail for Sewer work - will vary in cap size, number of piles and sewer pipe configuration throughout project

PA1 | Construction Photos

Soil Stabilization using Stone Columns

- Stone columns will be installed in a grid within the project site particularly along the waterfront
- An augering machine is used to auger a deep hole in the soil
- The hole is then filled with crushed stone which compacts to form a stone column
- The grid of stone columns stabilizes the earth to protect it from impacts of extreme weather events (flooding, earthquake, etc.)



Stone Column Soil Stabilization Test Program May



PA1 | Construction Activities through 2022

ALL WORK IS SUBJECT TO CHANGE

1. Demolition of Tennis Building – TBD
In progress soil, sewer and pile activities continue.
2. Delancey Street utility work & reconstruction of new bridge.
3. Continue Corlears Hook Park partial closure.
Corlears Hook Bridge reconstruction.
4. Passive lawn utility work.
5. Montgomery Street & Greenway floodwall construction.
***Night work anticipated for several months along Greenway.**



Montgomery St. / South St. floodwall and flood gate



Southern Reaches of floodwall along Greenway

PA1 | Construction Activities through 2022

ALL WORK IS SUBJECT TO CHANGE

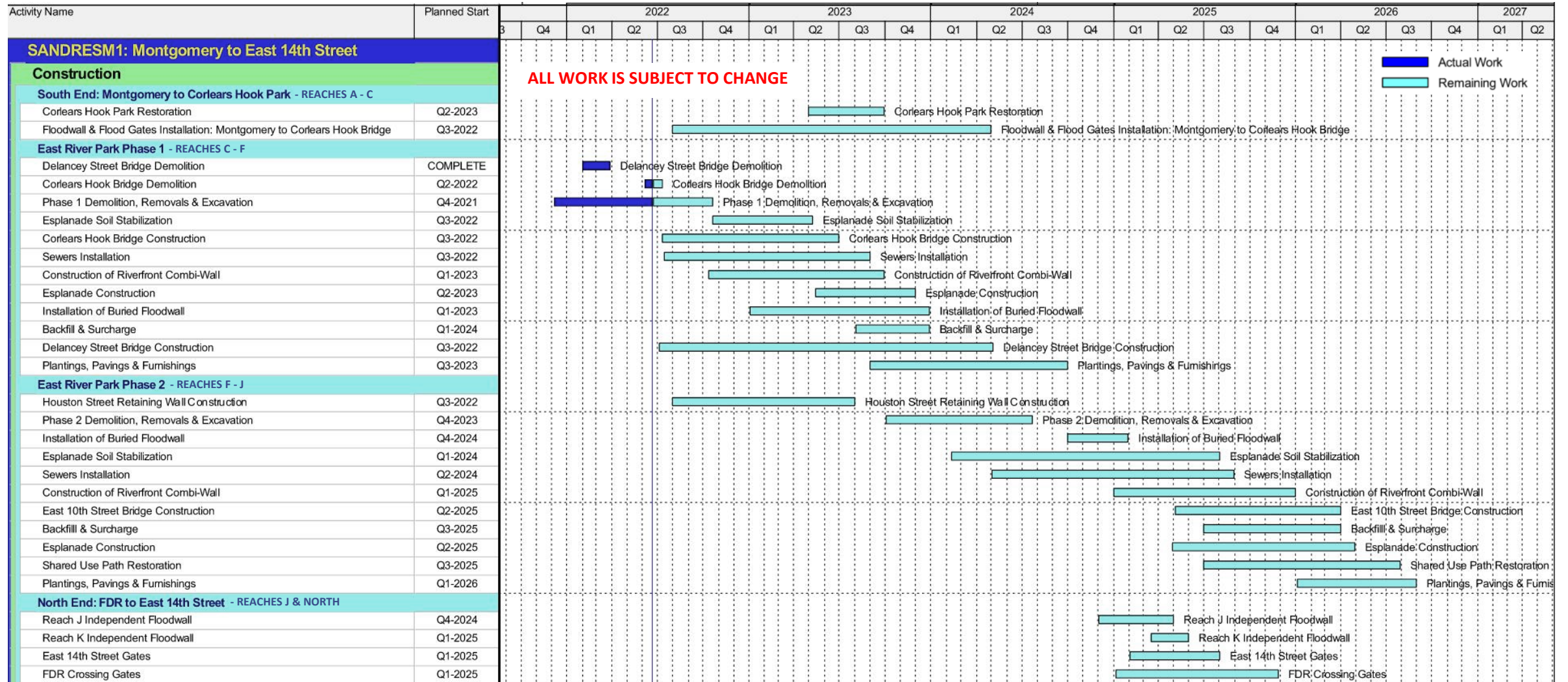
1. ConEd work in Shared Use Path north of E Houston Street to E 10th Street will continue for next 6-8 months.
2. Houston Street Retaining Wall activities.
3. Ongoing partial FDR lane closures continue.
4. Ongoing utility work at E10th Street.

Weekly Bulletins & Advisories are issued with construction activities.



Houston St retaining walls

PA1 | Construction Timeline



WHAT WE'VE HEARD

- improve site access conditions and wayfinding signage in East River Park



June/July 2022 improvements & signage



WHAT WE'VE HEARD

- improved site signage: vandalism



July 2022 vandalism



www.nyc.gov/escr