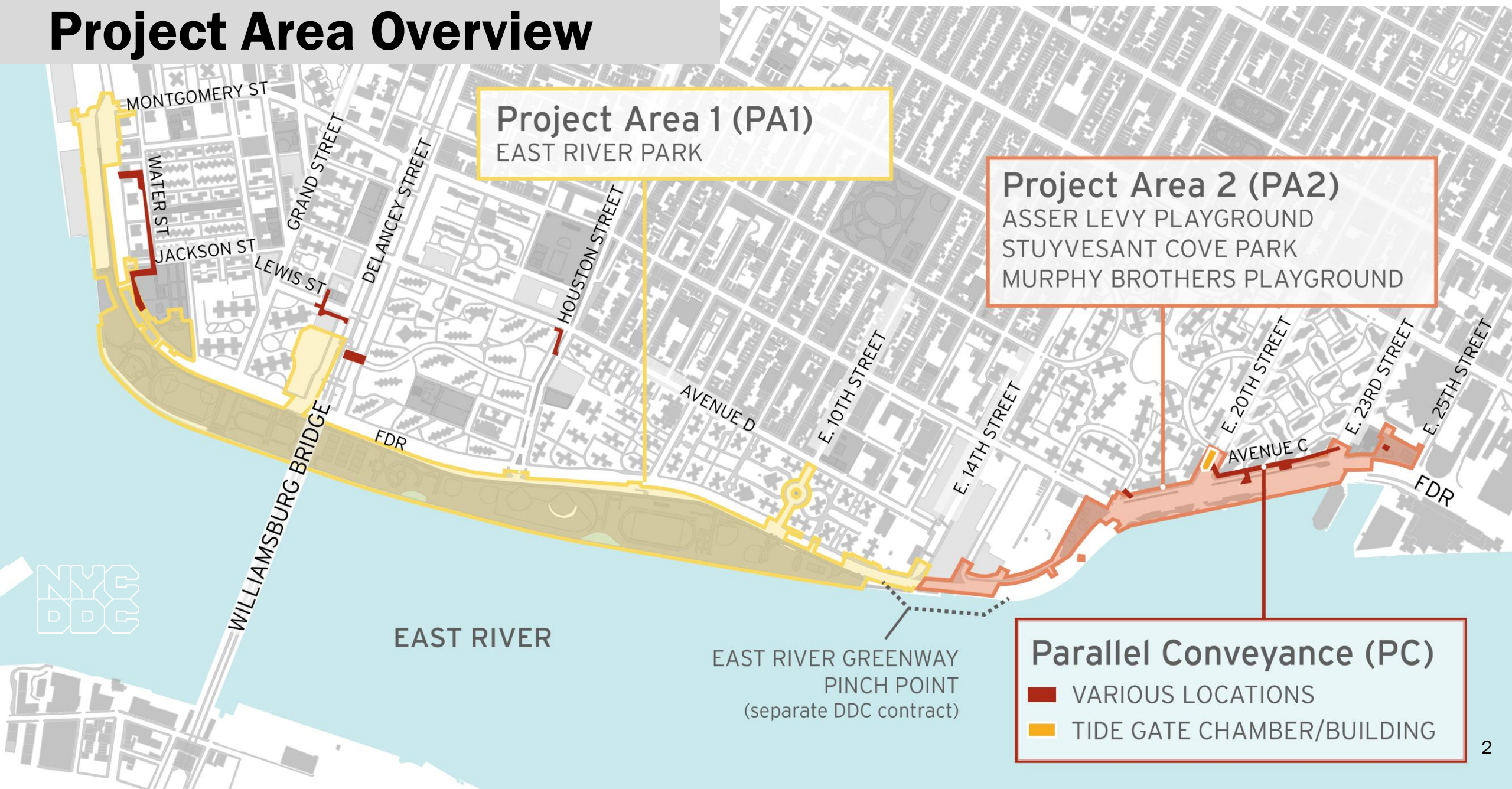


East Side Coastal Resiliency Status & Timeline Update

CB3 Parks Committee Meeting
BRC Senior Services Center
30 Delancey Street
December 11, 2025



Project Area Overview



PA1 | Project Status

- 42% of East River Park is currently open to the community, following full transition to phase 2 in September 2025.
- **Unforeseen underground obstructions**, including high levels of historical construction & demolition debris, and **extensive utility conflicts** have required mitigation and alternate engineering approaches.
- **PA1 is now anticipated to be completed in late 2027.**
- The ESCR team's top priority is implementing a functional flood protection sooner than full project completion.



East River Park south

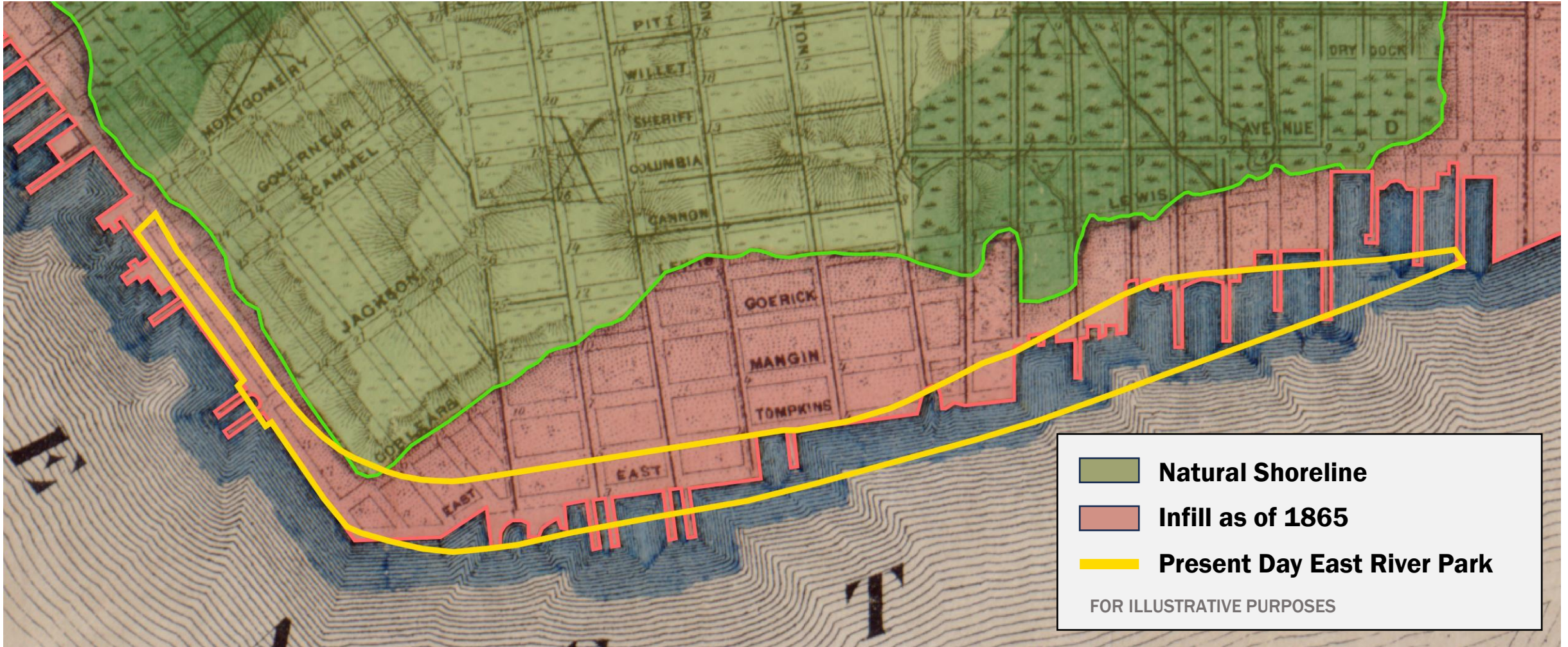


Excavated historic urban fill material, including masonry bricks, coarse rocks, timber bulkheads



Drill bit teeth damaged by obstructions

PA1 | Site Context



PA1 | Site Context

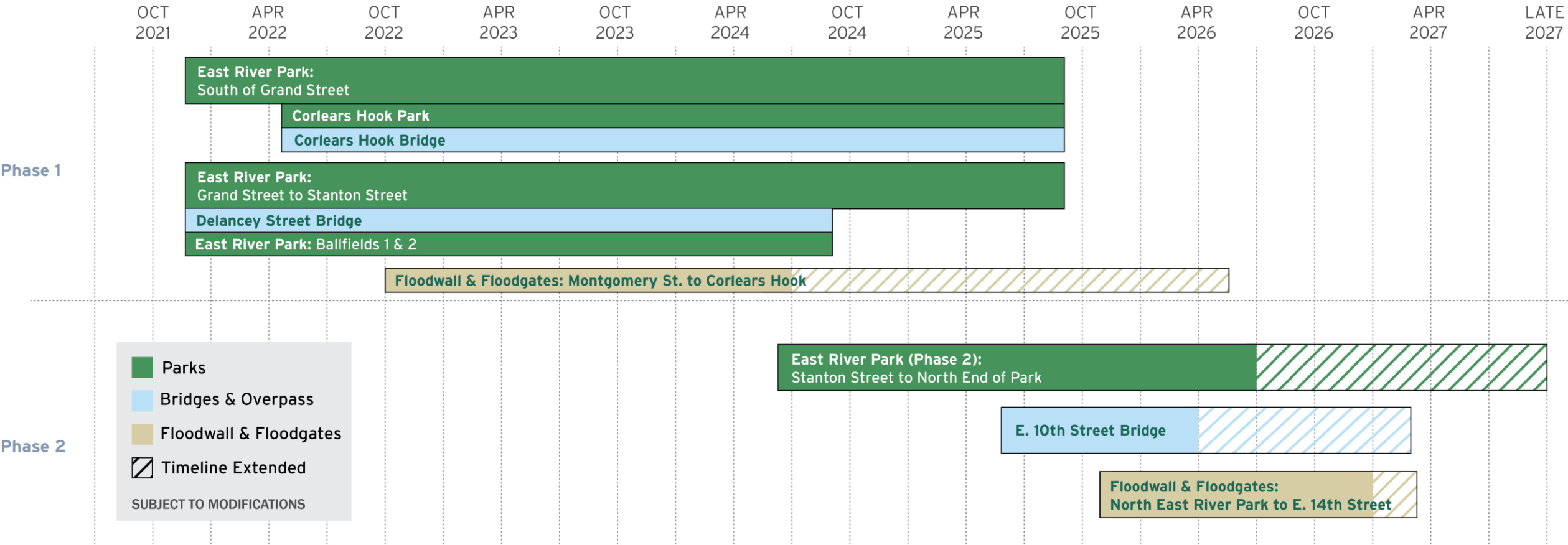


Construction of FDR Drive and East River Park infill – 1937



Completed FDR Drive and East River Park – Around 1940

PA1 | Timeline



ESCR Resources

Project Area 1:

- Vanessa Gomez #(347) 628-8724
- Pauline Chan #(929) 717-9015
- Email: ESCRCCL1@ddccr.com

Parallel Conveyance:

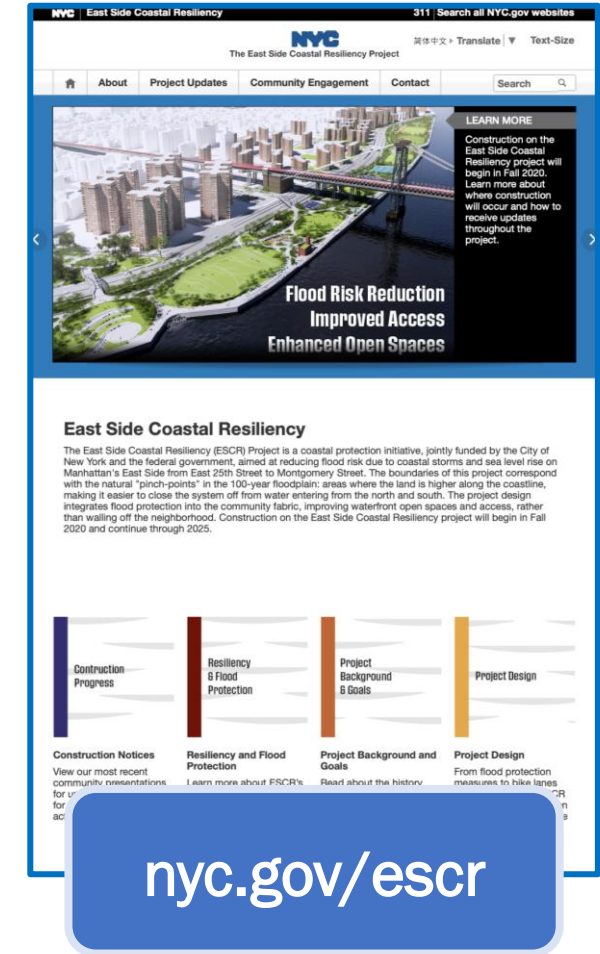
- Tannia Wokoun #(914) 313-6863
- Email: sandrespc.ccl@gmail.com

ESCR Inquiry Tool: nyc.gov/escr/contact

Recent Presentations: <https://on.nyc.gov/3DvPJs2>



Contact Us



Questions?