

East Side Coastal Resiliency Construction Update

E. 10th Street NYCHA Riis
June 18, 2025



Agenda

1. What We've Heard
2. Upcoming Work in Vicinity of NYCHA Riis
 - a) E. 10th Street Utility Work & FDR Drive Crossing
 - b) E. 10th Street Bridge Removal
 - c) E. 10th Street Bridge Approach Construction
 - d) E. 10th Street Bridge Renderings
3. Environmental Monitoring
4. East River Park Access & Amenities
5. Questions

Rendering of northern portion of **East River Park**



PA1 | What We've Heard

ALL WORK IS SUBJECT TO CHANGE

- Sidewalk restoration and storage areas
 - Project team is reviewing whether sidewalk west of traffic circle can be restored and re-evaluating storage footprint
- Requests for additional notifications
 - Sign up for Riis-specific notifications via QR code →
- Dust and dirt conditions
 - Water trucks will be dispatched this summer as needed, **please contact CCLs if dust is excessive**
 - More information on environmental monitoring in slides ahead
- Parks and recreation opportunities
 - NYC Parks recommends [Dry Dock Playground](#) and [Tompkins Square Park](#). Both have pools and playgrounds available for Riis tenants.



Upcoming Work in Vicinity of NYCHA Riis

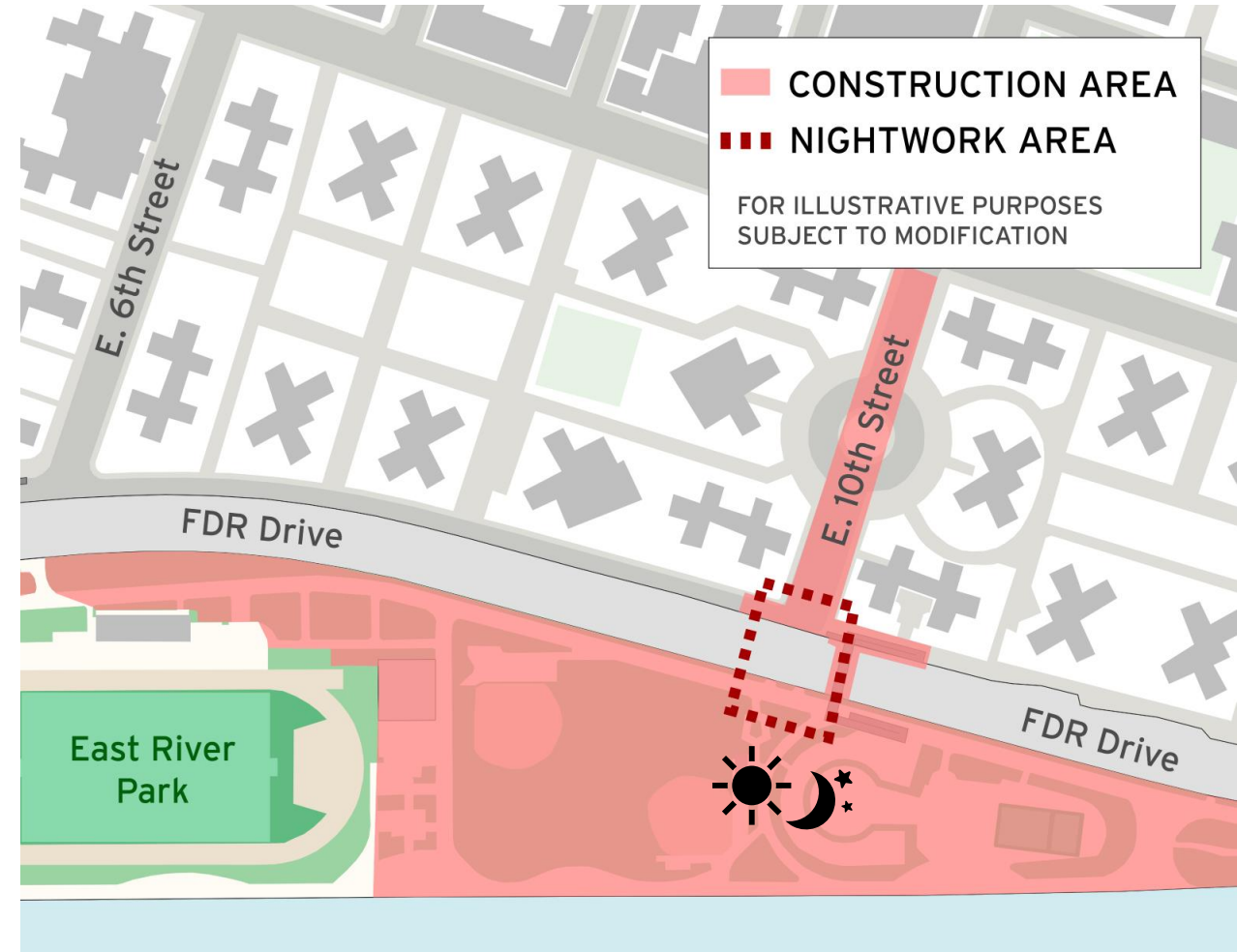
PA1 | E. 10th Street Utility Work and FDR Dr. Crossing

ALL WORK IS SUBJECT TO CHANGE

New utilities & manhole across FDR Dr.

- **Day & night work**
(night due to DOT permits & FDR closures)
- **Approximately 6 weeks**
- Excavations are expected to be noisy
- **This work began last night, but noisier work is anticipated to begin later this month** (pending Con Ed coordination)
- All detours and road closures are closely coordinated with emergency service

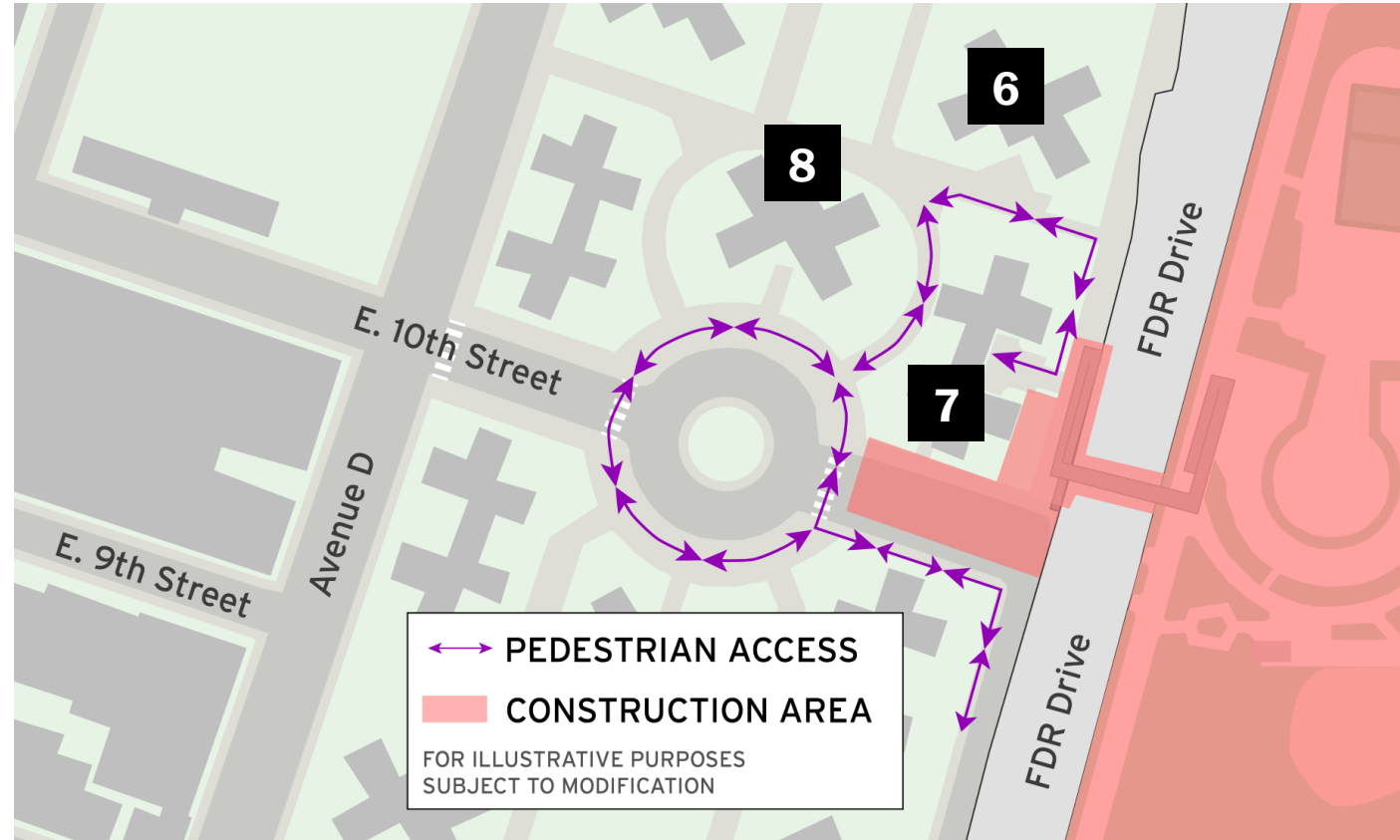
*Approx. 3-4 months of utility work in this area



PA1 | E. 10th Street Bridge Sidewalk Closure & Detour

ALL WORK IS SUBJECT TO CHANGE

- **Sidewalk Closed** on the north side of E. 10th Street between FDR Drive and the traffic circle (near Building 7) for pedestrian safety
- **Starting this week, ongoing for 2-3 months**
- **Building access** will be maintained at all times
- Please follow all posted signs and flaggers
- All detours and road closures are closely coordinated with emergency services



PA1 | E. 10th Street Bridge Removal

ALL WORK IS SUBJECT TO CHANGE

- Overnight June 29, 2025, 12:01am
- Ongoing day and night work after initial closure
- Most removal work must be conducted at night due to DOT permits and FDR Drive Lane closures
- This work will be noisy and disruptive
- Sequence of removal:
 - 1) Bridge span and portion of west ramp (multiple **nighttime** shifts)
 - 2) Remaining segments of west ramp (multiple **nighttime** shifts)
 - 3) East ramp (multiple daytime shifts)

Old Delancey St. Bridge Removal



PA1 | E. 10th Street Bridge Approach Construction

ALL WORK IS SUBJECT TO CHANGE

- Installation of piles anticipated late summer to early fall after completion of utility work on E. 10th Street
- Construction of ramps/abutments will begin first and should take roughly 6-9 months
- Most pile installation will be conducted during the day
- This work will be noisy and disruptive



E. 10th Street Bridge and Ramp Rendering

PA1 | Similar Work Activities

ALL WORK IS SUBJECT TO CHANGE



Working in close proximity to
Gouverneur Gardens



Pile installation for
Delancey St. Bridge

PA1 | New E. 10th Street Bridge: Renderings

ALL WORK IS SUBJECT TO CHANGE

Existing bridge



New bridge to be installed under ESCR



PA1 | New E. 10th Street Bridge: Renderings

ALL WORK IS SUBJECT TO CHANGE

Existing bridge

New bridge will be **fully accessible**
and ADA-compliant

→ Traffic Pattern
E. 10th St. Sidewalks

FOR ILLUSTRATIVE PURPOSES
SUBJECT TO MODIFICATION

PA1 | E. 10th Street Bridge: Renderings

ALL WORK IS SUBJECT TO CHANGE



Environmental Monitoring

ESCR | Air Quality Monitoring

ALL WORK IS SUBJECT TO CHANGE

- Air and noise monitors are active **24 hours/day, 7 days/week**
- The project follows all federal, state and local guidelines. To date, construction activities have not exceeded National Ambient Air Quality Standards
- Monitoring machines are on site to measure particles from construction vehicle emissions and dust as well site conditions such as wind speed and temperature
- These machines are placed strategically along the edge of active construction activities
- Environmental monitoring reports are posted to our website:
<https://on.nyc.gov/4brIXjG>

East Side Coastal Resiliency
www.nyc.gov/escr

Air Quality Monitoring

Community health and safety is extremely important to the City of New York. The East Side Coastal Resiliency (ESCR) project team is ensuring there is very limited impact on nearby air quality as we construct flood protection for New Yorkers on Manhattan's East Side.

1. We are constantly monitoring the air quality around our construction activities.

WHAT ARE WE MEASURING?

Particulate Matter (PM), or particle pollution, is a term for the solid particles and liquid droplets found in the air.

MEASURED SIZES:
PM 2.5: smaller particles typically from vehicle emission
PM 10: larger particles typically from dust

Diagram: AIR MONITOR A (UPWIND) → AIR MONITOR B (DOWNWIND) → NET PARTICULATE MATTER. The diagram shows air flowing from Monitor A to Monitor B, with a construction site in between. Monitor A measures existing particles, and Monitor B measures existing particles and any potential increase from construction or other activities. NET PARTICULATE MATTER reflects the potential increase in particle pollution directly related to construction activities.

NET PARTICULATE MATTER is the standard metric for monitoring and assessment of construction impacts on air quality, as well as compliance with federal limits.

Control dust and limit emissions during construction.

pollution and emissions:

DID YOU KNOW? One barge has the capacity to divert up to 57 trucks from local roads.

non-road diesel engines
hauling loose material including

These steps are implemented during daily construction activities and are increased if monitoring machines indicate additional action is needed. Visit the ESCR website to view weekly Construction Bulletins and Advisories.

- Use water spray for roads, trucks, truck wheels, excavation areas, and stockpiles
- Cover stockpiles with anchored tarps
- Use extra care, including more frequent application of these measures, during dry and high wind periods

Logos: NYC DDC Department of Design and Construction, NYC Mayor's Office of Resiliency, NYC Parks, NEW YORK CITY DOT, NYC Environmental Protection

ESCR | Air Quality Monitoring

ALL WORK IS SUBJECT TO CHANGE

- Multiple air quality monitors in vicinity of Riis Houses
- From November through April, there were 5 alerts over 60 minutes
- Dust mitigation measures applied each time construction activities caused an alert
- Environmental monitoring reports are posted to our website: <https://on.nyc.gov/4brlXjG>



Example of Air Quality Monitor



★ Air Quality Monitor (Approx.)

■ Closed Construction Area

FOR ILLUSTRATIVE PURPOSES
SUBJECT TO MODIFICATION

ESCR | Vibration Monitoring at Riis Houses

ALL WORK IS SUBJECT TO CHANGE

- Vibrations at critical structures are monitored during installation of piles, sheet piles, and jet grouting
- **Allowable limit of vibration:** 0.5-inch per second in particle velocity above ambient level
- Pre-construction photos and settlement monitoring also ensure construction is not damaging structures

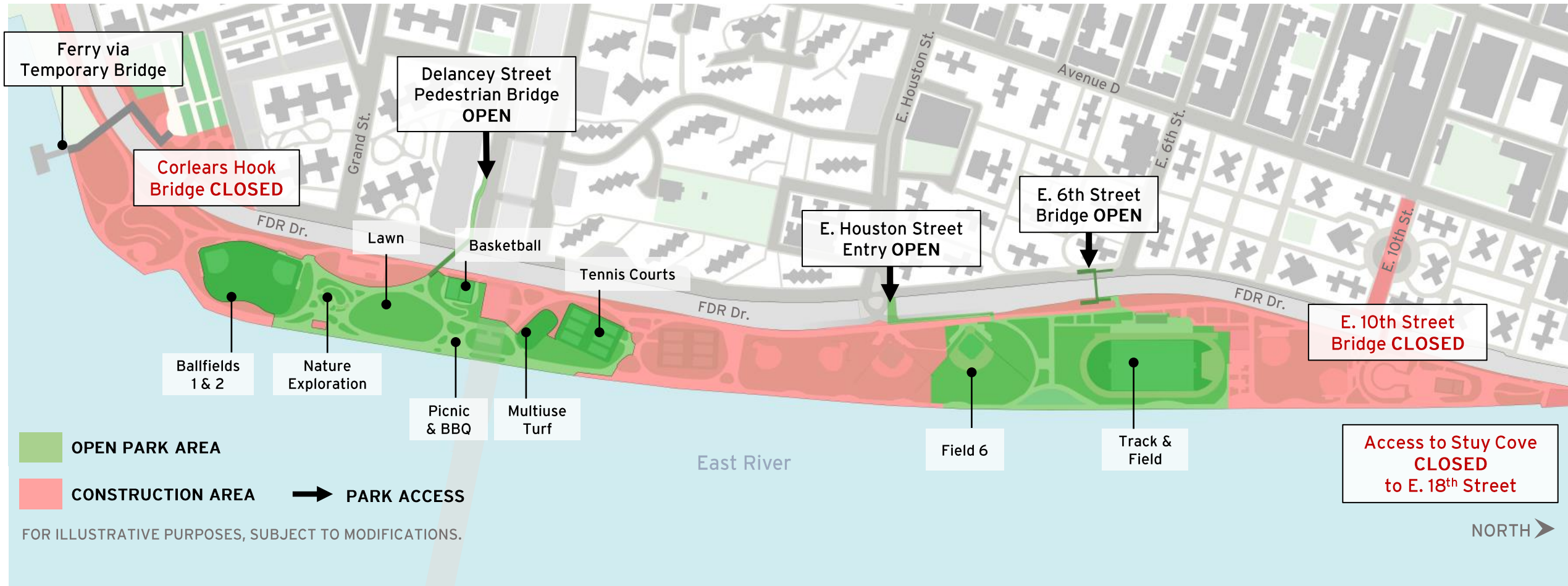
While vibrations can be unsettling to people, buildings are designed to withstand a high degree of vibration



East River Park Access & Amenities

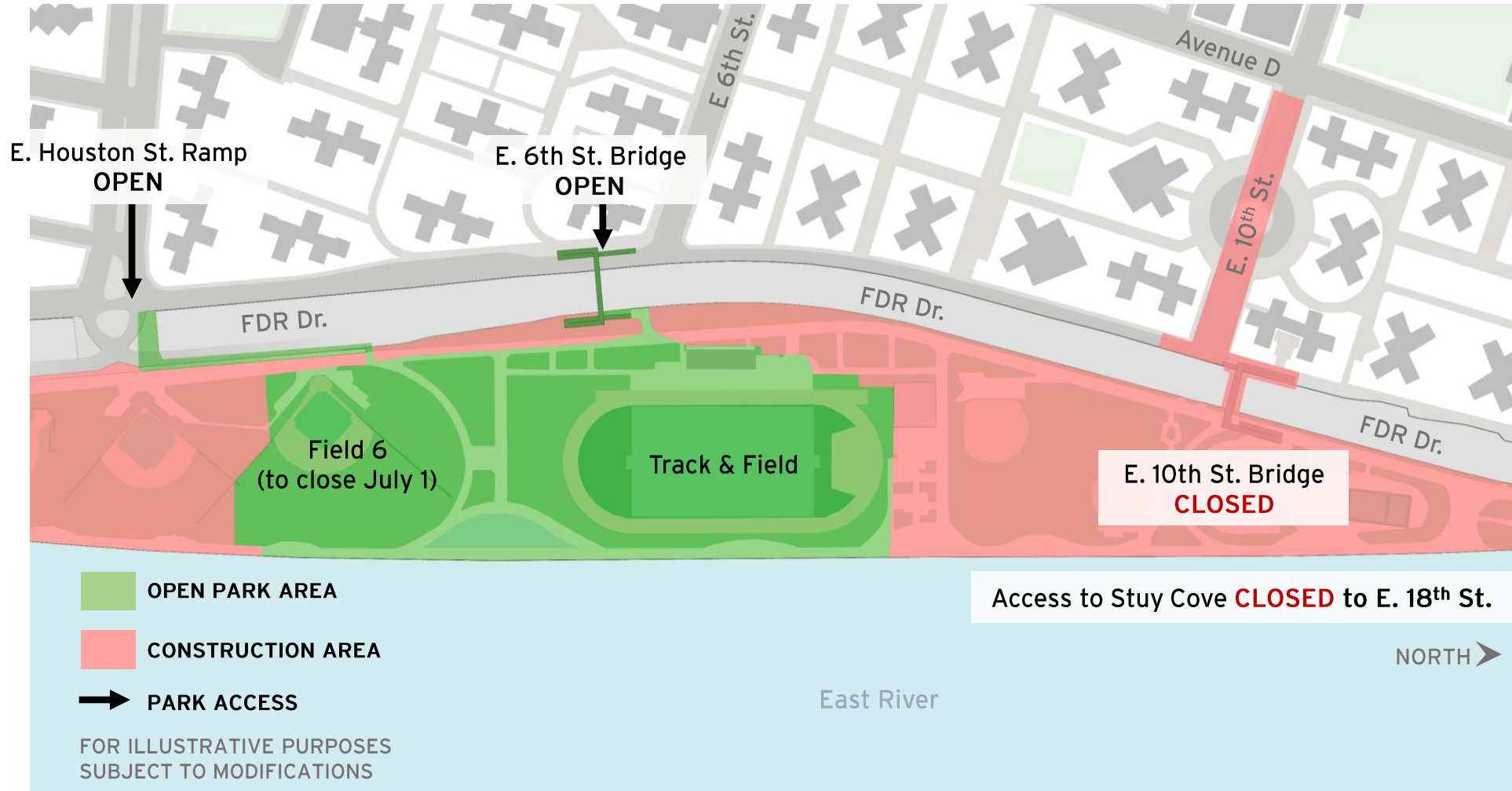
PA1 | East River Park Access Plan - Now

ALL WORK IS SUBJECT TO CHANGE



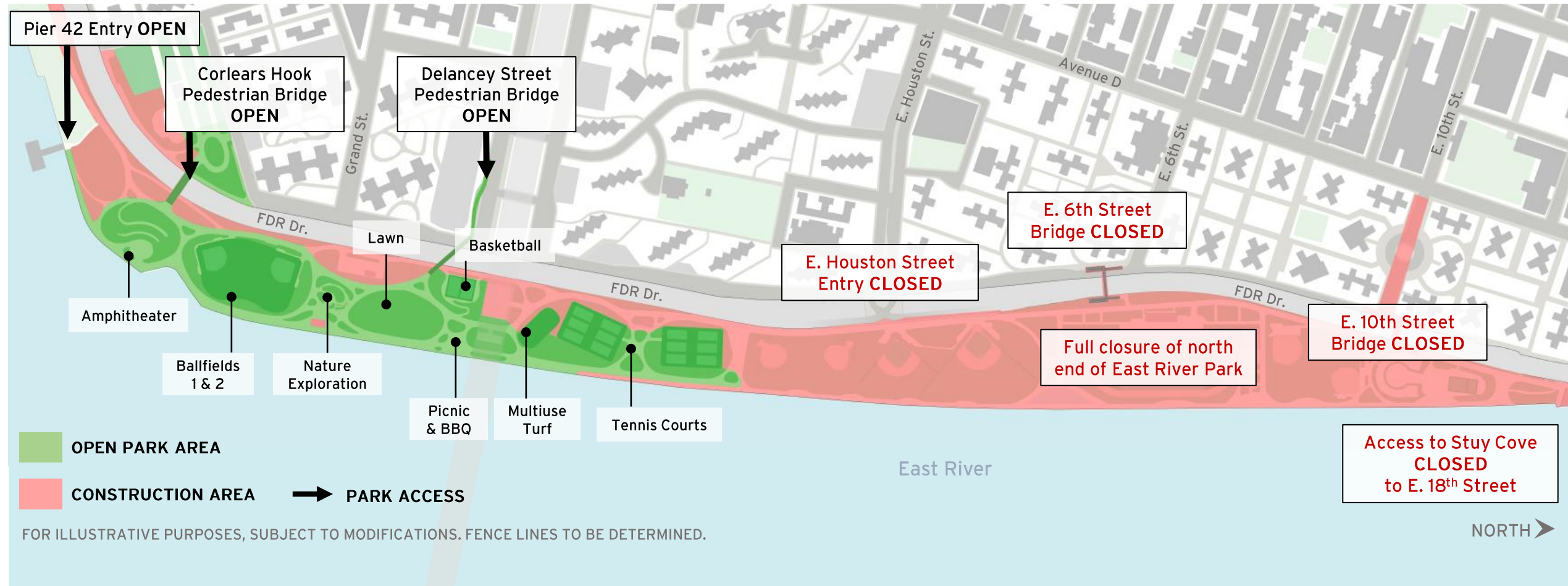
PA1 | East River Park Access Plan - Now

ALL WORK IS SUBJECT TO CHANGE



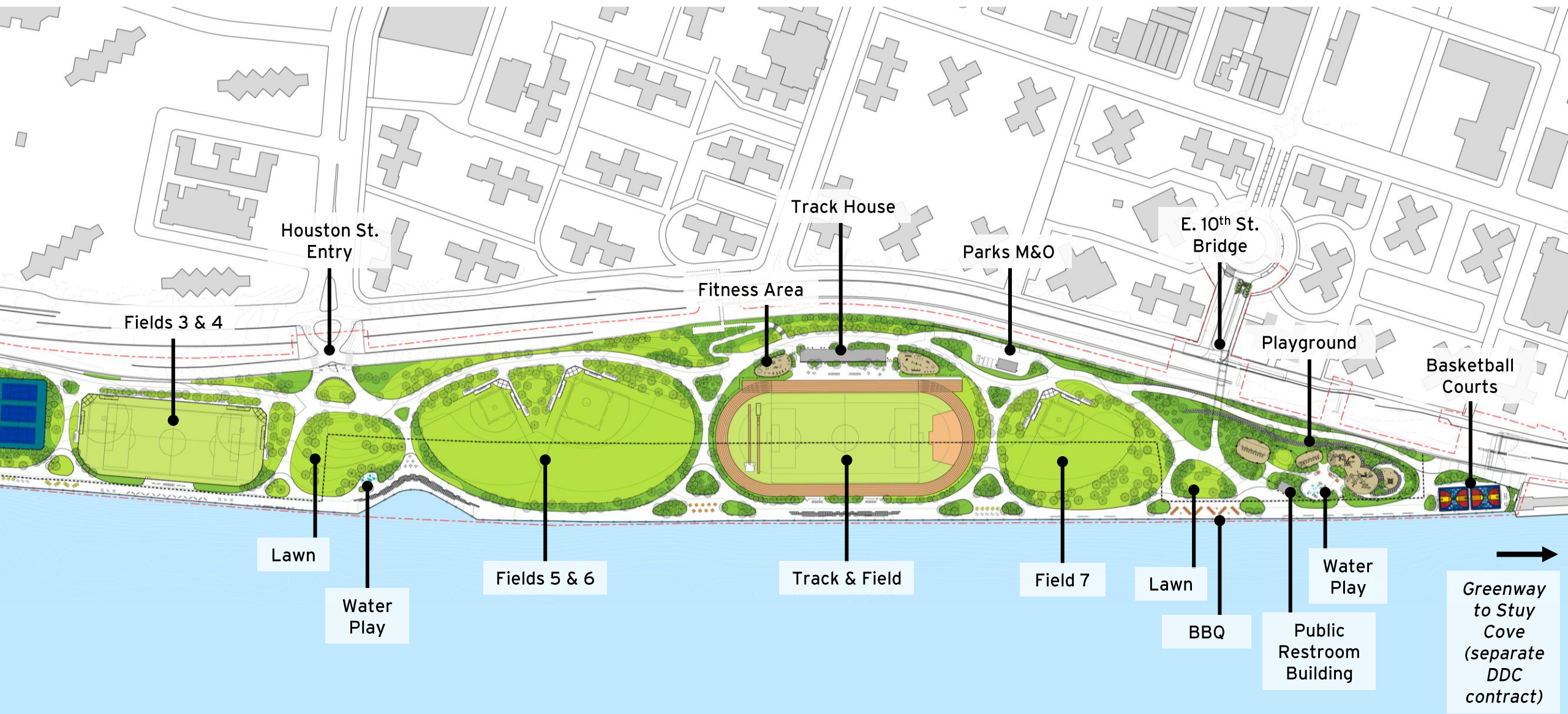
PA1 | East River Park Access Plan - September

ALL WORK IS SUBJECT TO CHANGE



PA1 | East River Park Future Amenities Overview

ALL WORK IS SUBJECT TO CHANGE



PA1 | East River Park South Amenities



Delancey Street lawn – May 27, 2025

PA1 | East River Park South Amenities



Delancey Street lawn – May 26, 2025



Esplanade and picnic area – May 26, 2025

PA1 | East River Park South Amenities



Picnic Area – May 26, 2025



BBQ and Picnic Area – May 26, 2025

PA1 | East River Park South Amenities



Basketball Courts – May 26, 2025



Water Play area – May 26, 2025

PA1 | Contact Us & Resources



ESCR Inquiry Tool

Questions? ¿Preguntas? 问题?

Community Construction Liaisons (CCLs):

- Vanessa Gomez #(347) 628-8724
- Pauline Chan #(929) 717-9015
- Email: ESCRCL1@ddccr.com

nyc.gov/escr



E. 10th Street community notification board located at southern edge of traffic circle