

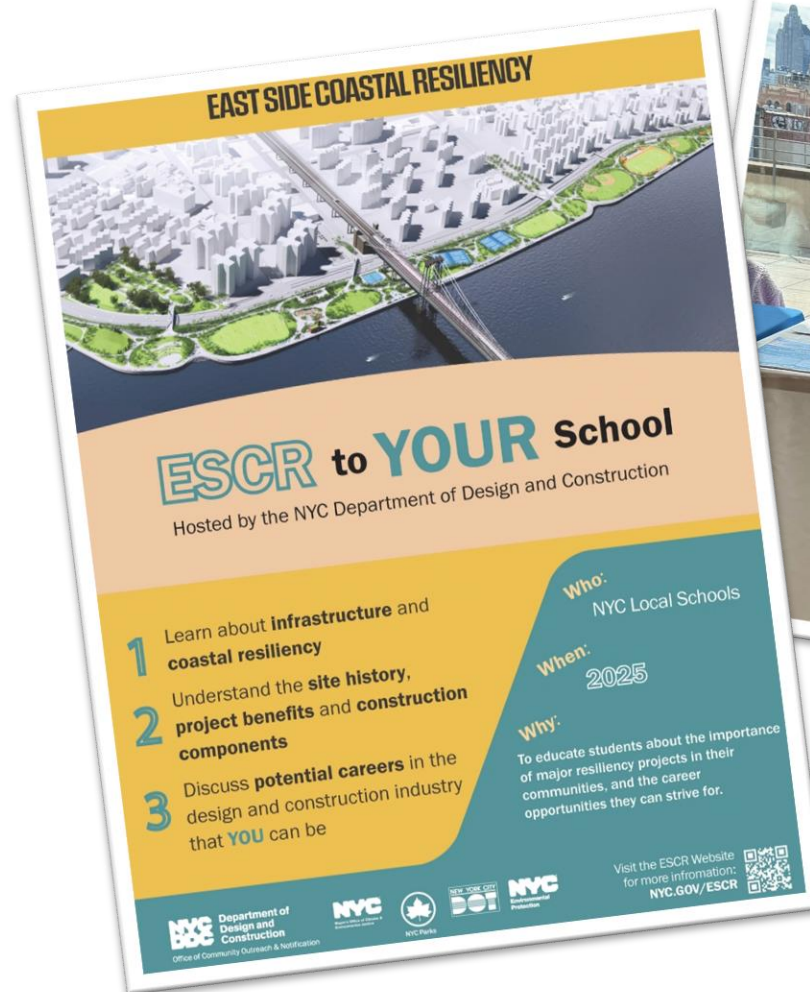
East Side Coastal Resiliency Construction Update

CB6 Land Use & Waterfront Committee Meeting
Virtual
May 20, 2025



Highlights

- Overview of Contracts
 - PA2 Update
 - PA1 Phasing Update
 - PC Construction Progress

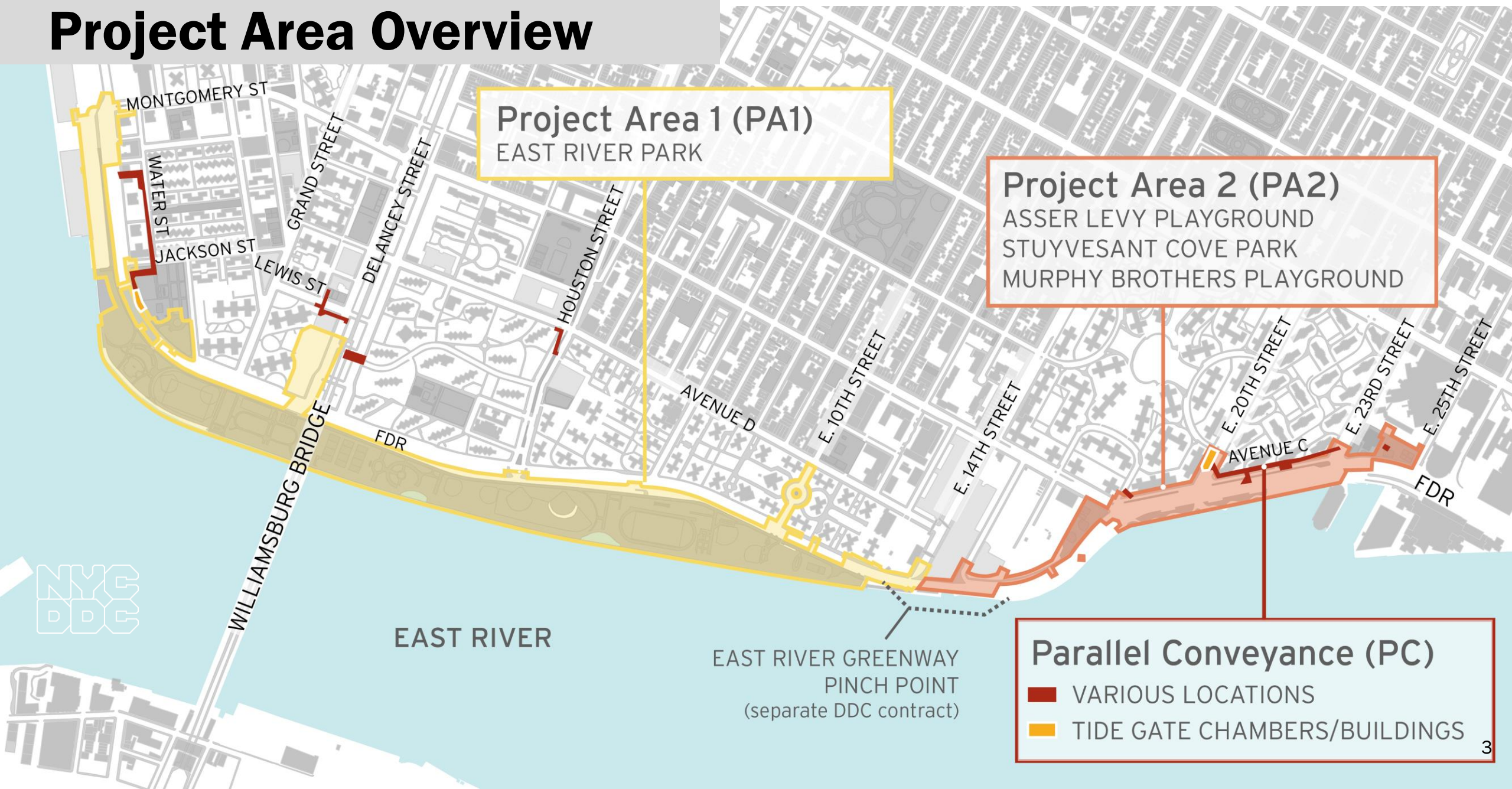


ESCR Tabling & Community Events

Reach out to project CCLs to schedule!

[ESCR to YOUR School](#)

Project Area Overview



Overview of Contracts

Project Area 1 (PA1)

NTP issued August 2021

- **Partial Closures:**
 - East River Park south of E. Houston St. & Ballfields 7 & 8
 - Greenway closure to E. 10th St.
 - Corlears Hook Park
- **Bridges:** Corlears Hook pedestrian bridge installed. Use Corlears Hook temporary ped. bridge. Delancey St. bridge **Open!**
- **Ongoing work:**
 - Ongoing utility work
 - Floodwall activities ongoing, as well as fill operation via barge
 - E. Houston St. retaining wall work
 - Ballfields 7 & 8 deep sewer work
- **Amenities in progress:**
 - Ballfields 1 & 2 **Open!**
 - Phase 1 esplanade & planting
 - Amphitheater, Tennis Court and Basketball Court construction & more

Parallel Conveyance (PC)

NTP issued September 2022

- **Corlears Hook Park, South St. and Water St.**
 - Curb, sidewalk & road restoration
 - Daytime road closures of Jackson St. to facilitate deep sewer work
 - Utility relocations
- **Lewis and Delancey Streets**
 - Utility relocations
 - Test pits
 - Deep sewer installation
- **E. Houston and Columbia Streets**
 - Utility relocations
 - Sewer installation
- **Avenue C (E. 18 - E. 23) locations**
 - Gas relocations
- **E. 20th St. (Ave C and E. 20th loop)**
 - Test pits
 - Utility relocations

Project Area 2 (PA2)

NTP issued November 2020

- **Asser Levy Playground** **Open**
- **Stuyvesant Cove Park** **Open**
 - park closed around Solar One for EDC project (not ESCR)
- **Murphy Brothers** **Open!**
- All **3,129** ft of floodwall installed
- All Gates 7-18 installed

VISIT PA1 GALLERY:

<https://www.nyc.gov/site/escr/project-updates/pa1-gallery.page>

VISIT PA2 GALLERY:

<https://www.nyc.gov/site/escr/project-updates/pa2-gallery.page>

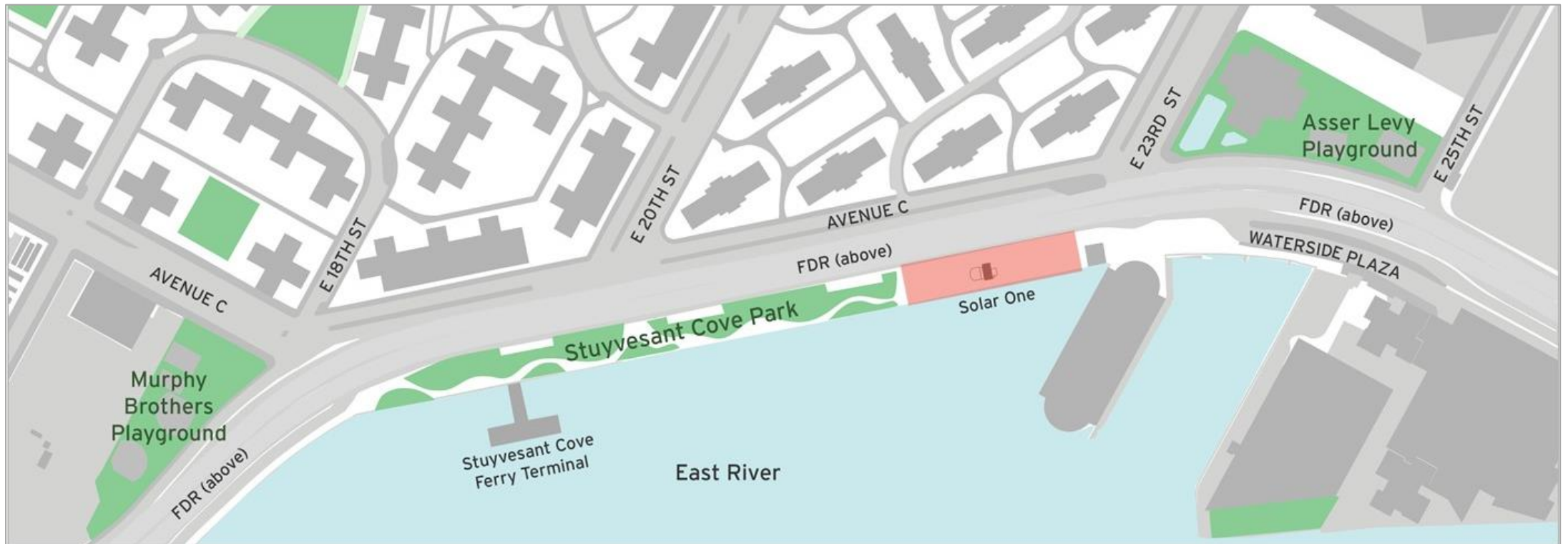
VISIT PC GALLERY:

<https://www.nyc.gov/site/escr/project-updates/pc-gallery.page>

PA2 | Construction Status

ALL WORK IS SUBJECT TO CHANGE

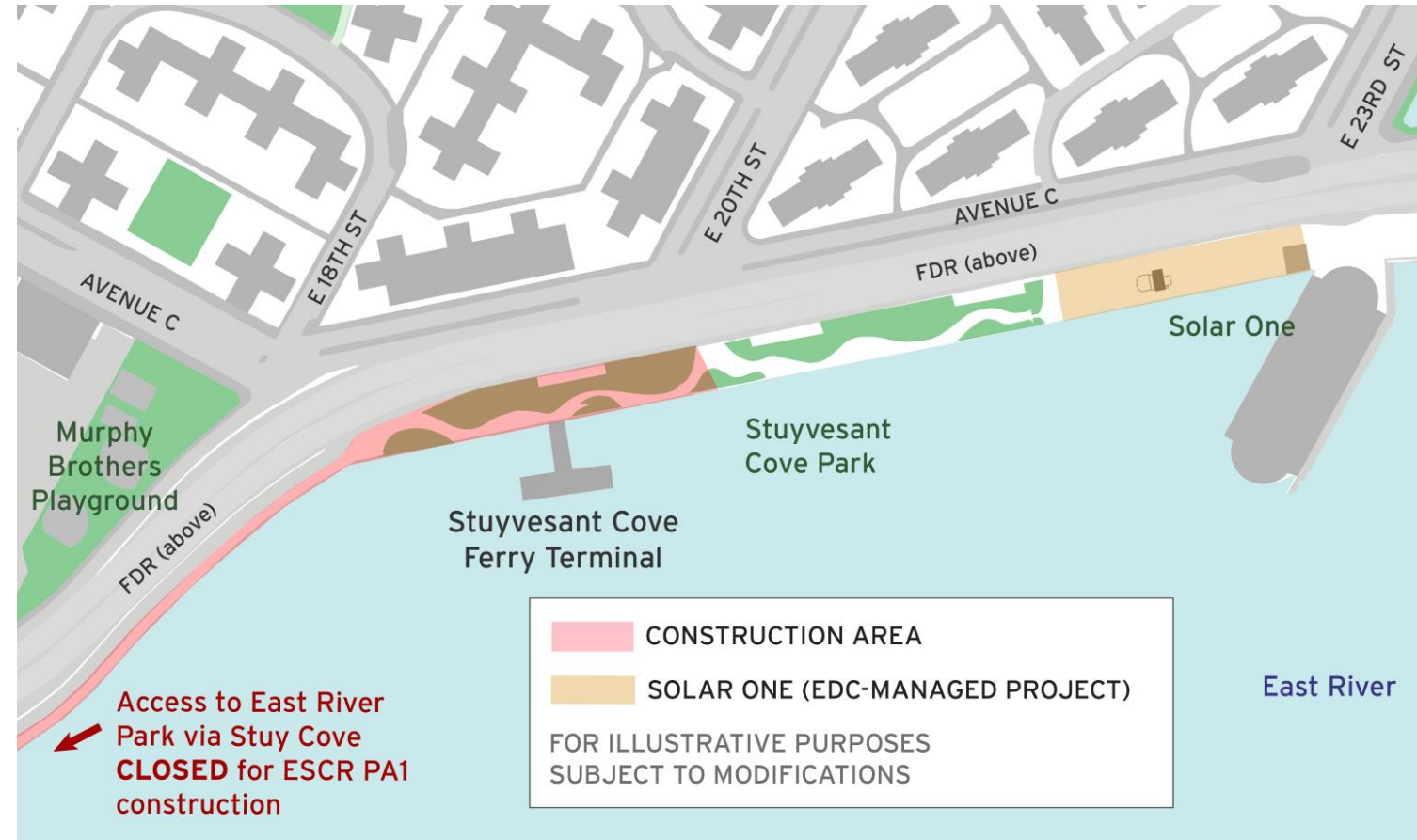
- Punch list items ongoing across project area
- Asser Levy Playground – **OPEN!**
- Stuyvesant Cove Park – **OPEN!** North entrance at E 23 St. **closed** for EDC Solar One construction work.
- Murphy Brothers Playground - **OPEN!**
- Greenway - **OPEN!**



PA2 | Punch List: Sidewalk Replacement in Stuy Cove

ALL WORK IS SUBJECT TO CHANGE

- Stuyvesant Cove Park sidewalk to be closed in portions between E. 18 St. & E. 20 St.
 - Beginning Monday, June 2, 2025
 - Work hours: 7:00am to 3:30pm
 - Full operation expected to take two months
- Closures to happen in sections, with northern portion of Park to remain open
- Ferry access will not be impacted
- Full advisory to come



ESCR PA1 Phasing Update

PA1 | Phase 1 – South of Williamsburg Bridge

As early as May 26, 2025 ([full advisory](#))

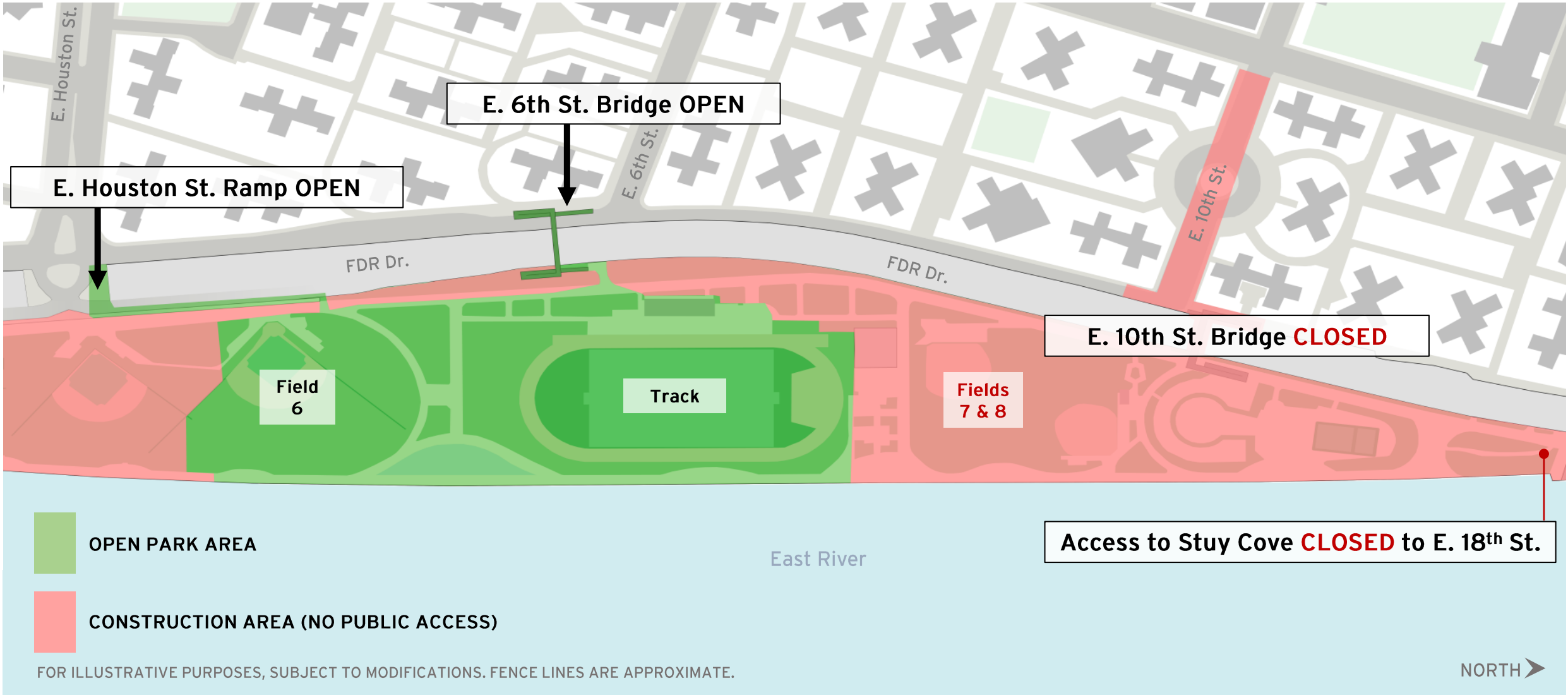
ALL WORK IS SUBJECT TO CHANGE



PA1 | Phase 2 – North of Williamsburg Bridge

As early as May 27, 2025 ([full advisory](#))

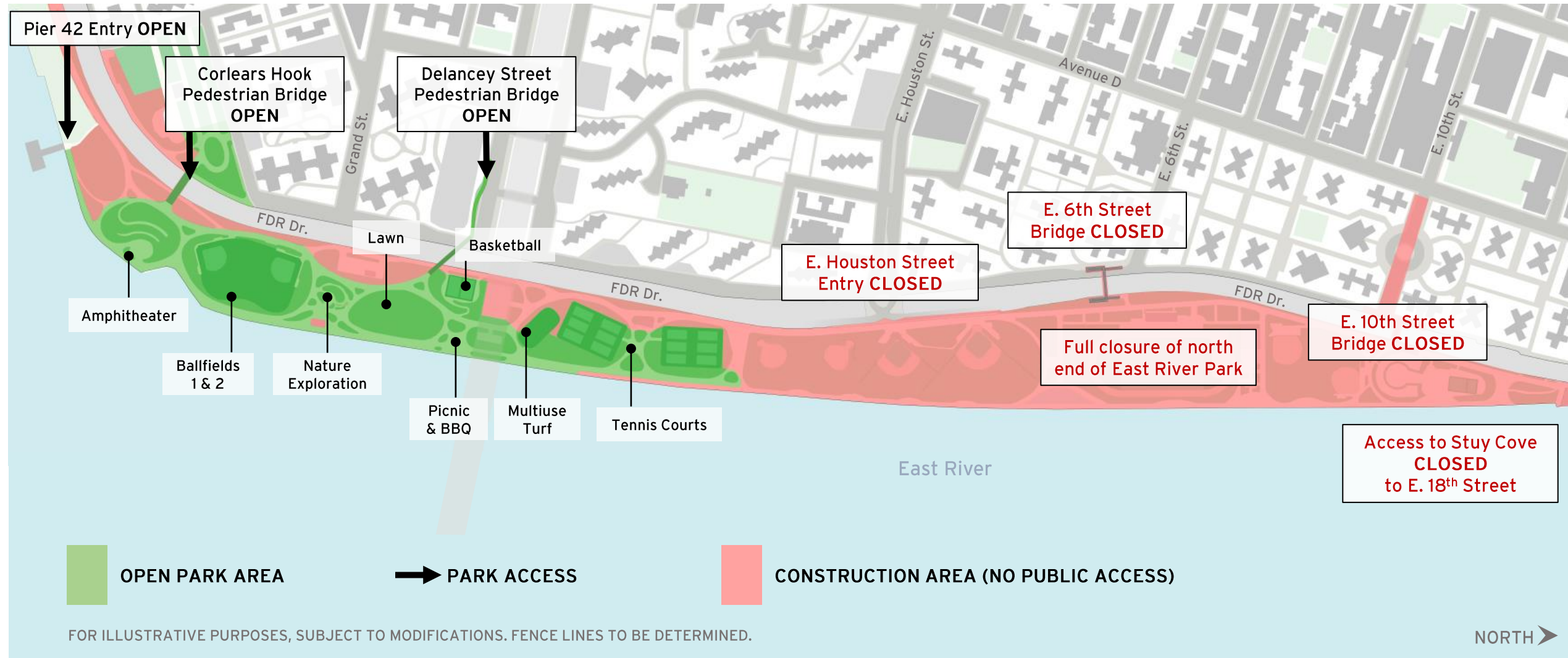
ALL WORK IS SUBJECT TO CHANGE



PA1 | Full Phase 2 Transition

Late-Summer 2025 (full advisories to come)

ALL WORK IS SUBJECT TO CHANGE



PA1 | What We've Heard: Phasing

ALL WORK IS SUBJECT TO CHANGE

Site Safety:

- Fence will be placed at beginning of Captain Patrick J. Brown Walk in Stuyvesant Cove Park

Greenway Detour:

- Existing Greenway detour remains in place

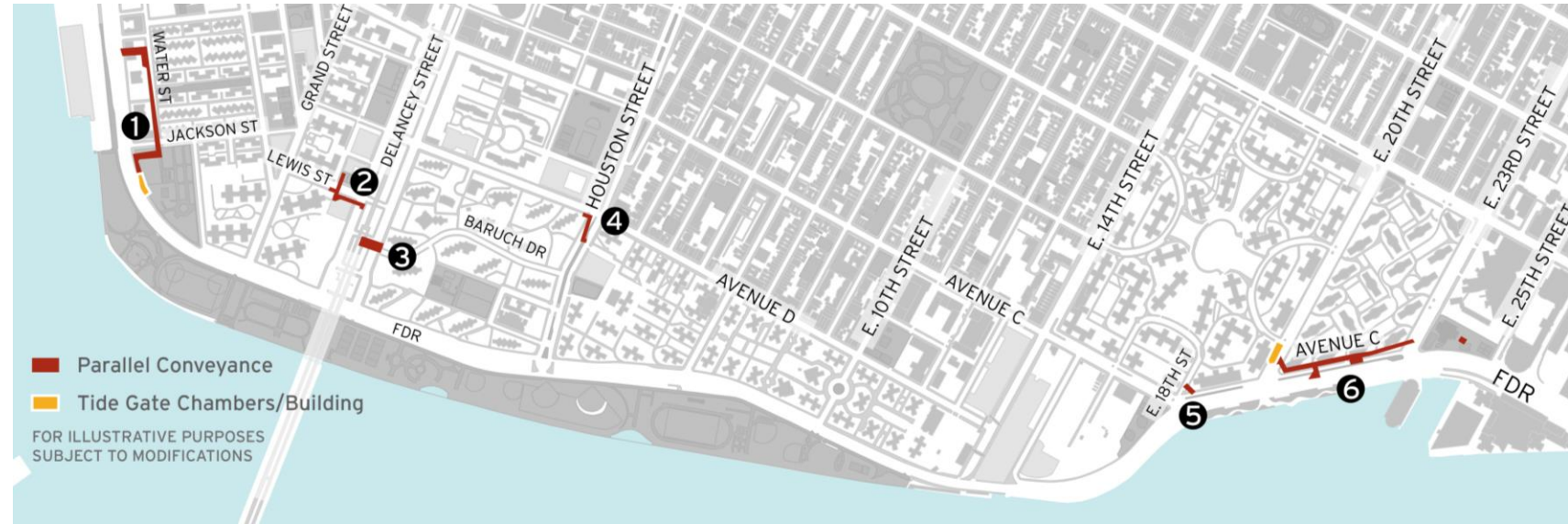


Parallel Conveyance

PC | Construction Progress

ALL WORK IS SUBJECT TO CHANGE

- **Location 1 – Jackson St. & Water St. & Corlears Hook Park**
 - Roadway restoration
 - Utility relocation
 - Sewer installation
- **Location 2 – Lewis St. & Delancey St.**
 - Test pits
- **Location 3 – Baruch Dr. & Delancey St.**
 - Utility relocation
 - Test pits
 - Sewer installation



- **Location 4 – E Houston St. & Columbia St.**
 - Utility relocation
 - Sewer installation
- **Location 5 – Avenue C & E 18th**
 - Gas relocation
- **Location 6 – Avenue C, E 20th to E 23rd**
 - Test pits
 - Utility relocation

PC | Activities in CB6

ALL WORK IS SUBJECT TO CHANGE

Scope of work in this area:

- Interceptor gate chamber and building on E. 20th St.
- New parallel conveyance sewer system in all areas
- Utility relocations throughout
- Restoration includes bike lanes, crosswalks, and bollards



Rendering of IGB, looking southeast towards Ave C; from Final ESCR PDC Presentation: <https://on.nyc.gov/40h6j8c>



PC | Ongoing & Upcoming Activities in CB6

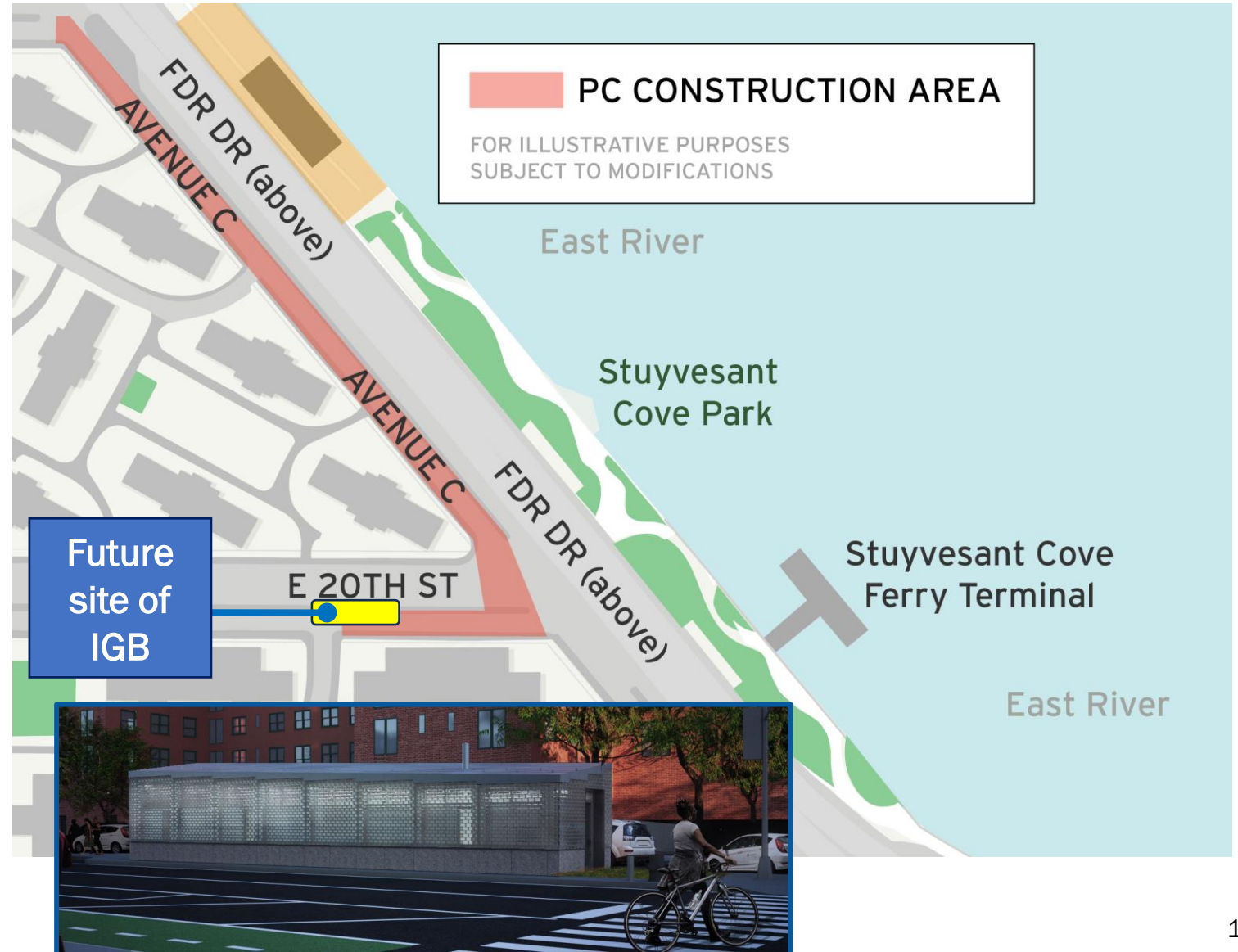
ALL WORK IS SUBJECT TO CHANGE

Avenue C north of E. 20th St.

- Test pits
- Most work on Avenue C is in the roadway

East 20th Street

- Continued test pits to locate existing interceptor sewer
- Start of electrical utility work
- Service Road closed and limited sidewalk impacts



PC | Ongoing & Upcoming Activities in CB6

ALL WORK IS SUBJECT TO CHANGE



Con Ed utility layout in E. 20th St. – March 2025



Test pit to locate interceptor sewer in E. 20th St. – March 2025

PC | Ongoing & Upcoming Activities in CB6

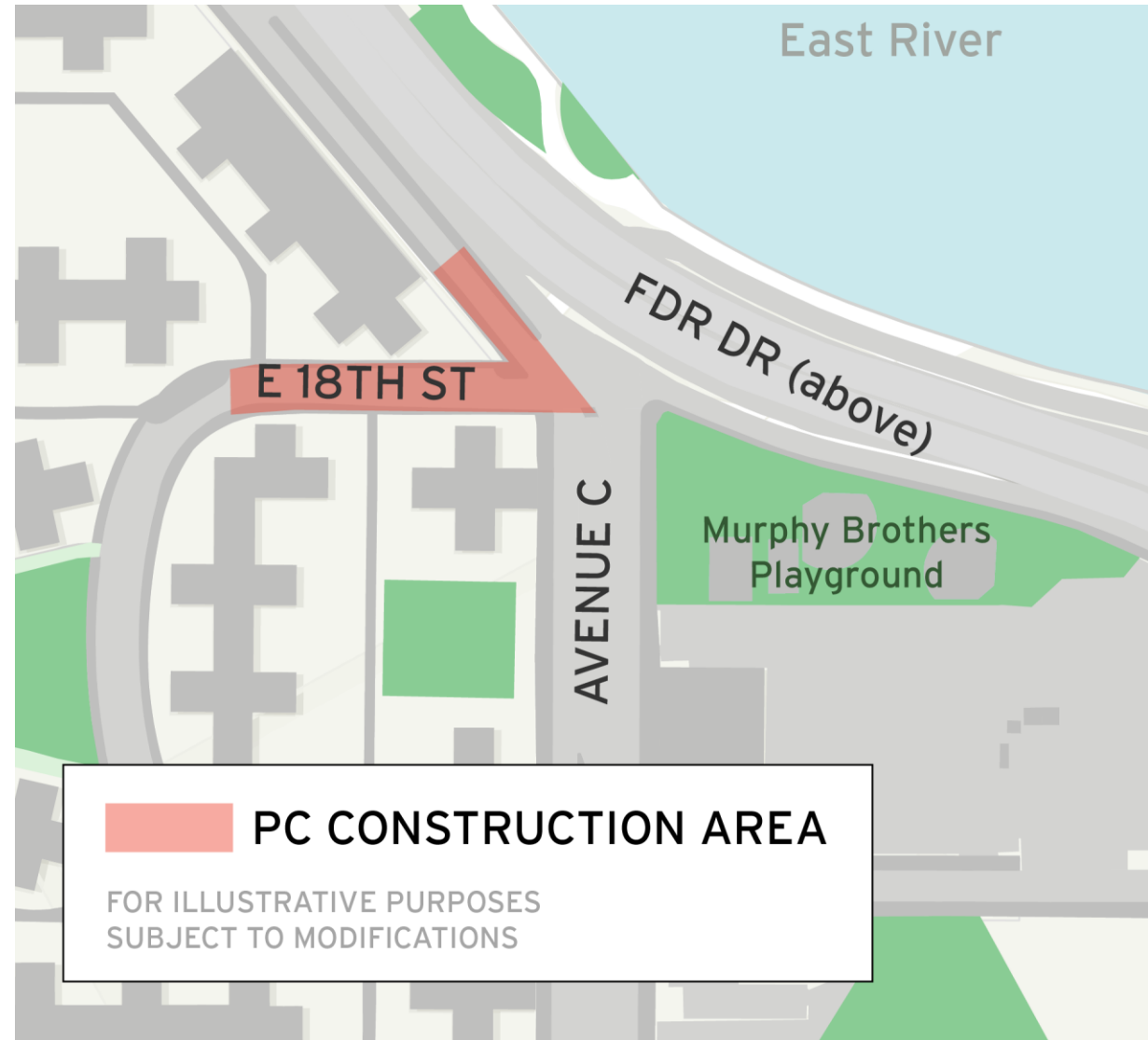
ALL WORK IS SUBJECT TO CHANGE

Avenue C, from East 18th Street to East 20th Street

- Additional test pits for utility and sewer investigations
- Work in street and on NW corner of sidewalk (traffic & access maintained)

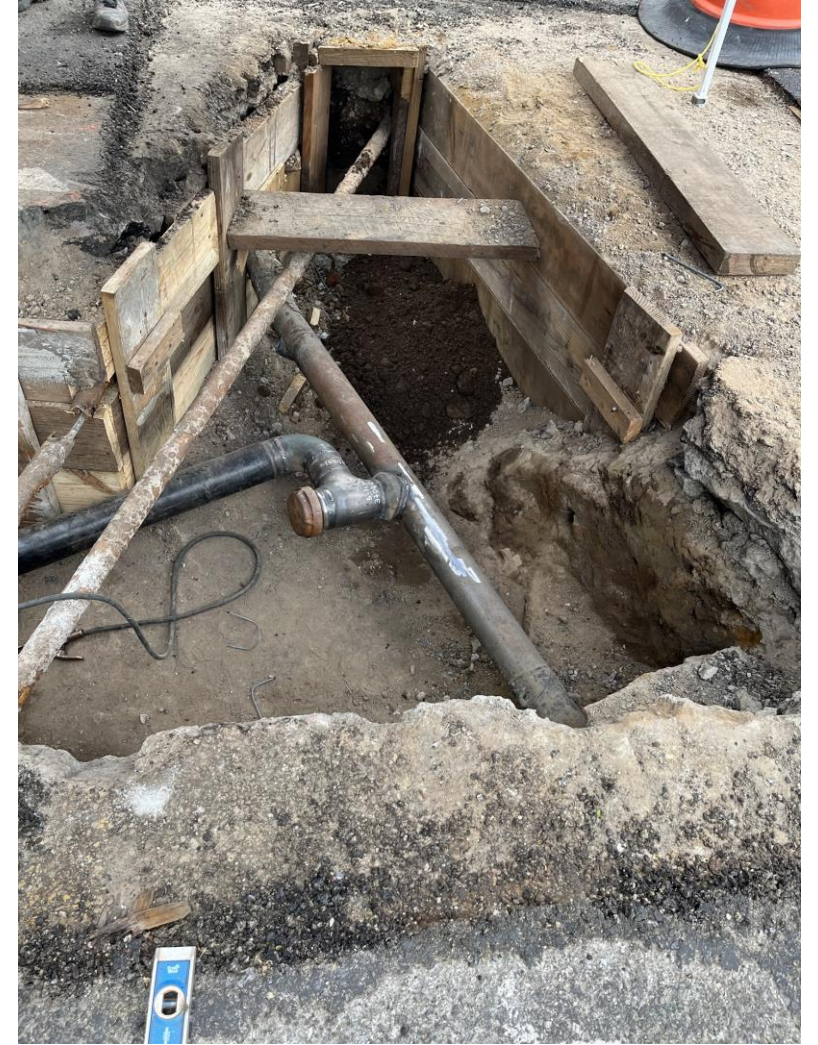
East 18th Street near Avenue C

- Ongoing gas main relocation
- Potential start of electrical utility relocation
- Traffic maintained
- Work in street and on NW corner of sidewalk (traffic & access maintained)



PC | Construction Photos

ALL WORK IS SUBJECT TO CHANGE



Gas main relocation on E. 18th St. and Avenue C – March 2025

ESCR Resources

Project Area 1:

- Vanessa Gomez #(347) 628-8724
- Pauline Chan #(929) 717-9015
- Email: ESCRCCL1@ddccr.com

Parallel Conveyance:

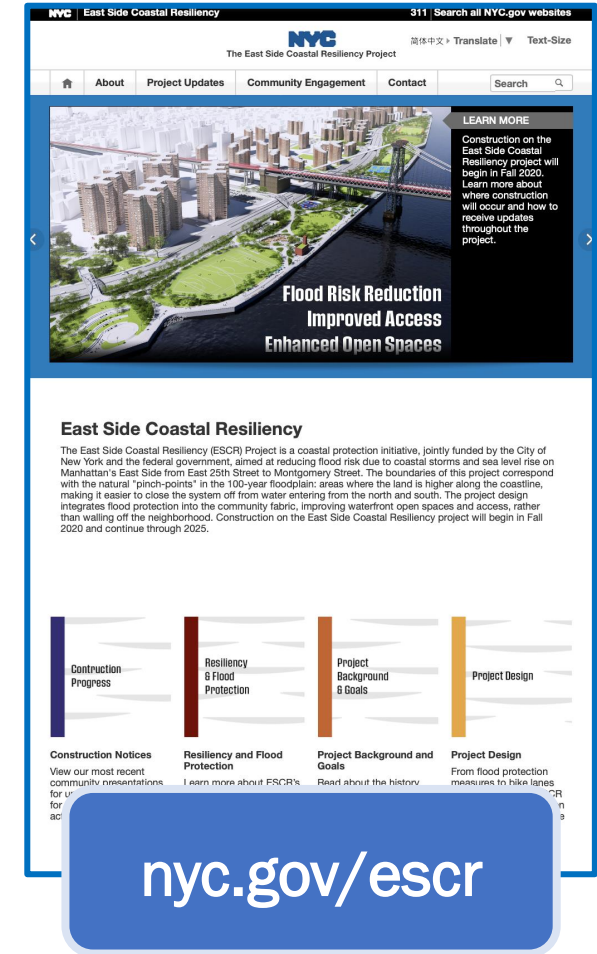
- Tannia Wokoun #(914) 313-6863
- Email: sandrespc.ccl@gmail.com

ESCR Inquiry Tool: nyc.gov/escr/contact

Recent Presentations: <https://on.nyc.gov/3DvPJs2>



ESCR Inquiry Tool





NYC Mayor's Office of Resiliency