

An aerial photograph of the East Side Coastal Resiliency construction site in New York City. The image shows a dense urban area with a large body of water (the East River) to the right. A bridge is visible in the foreground, crossing the water. The construction site is highlighted with green and blue areas, indicating new parks and infrastructure. The text is overlaid in white on a semi-transparent blue background.

# East Side Coastal Resiliency Construction Update

## NYCHA Riis Tenant Association Meeting

In-person  
March 11, 2025



# Agenda

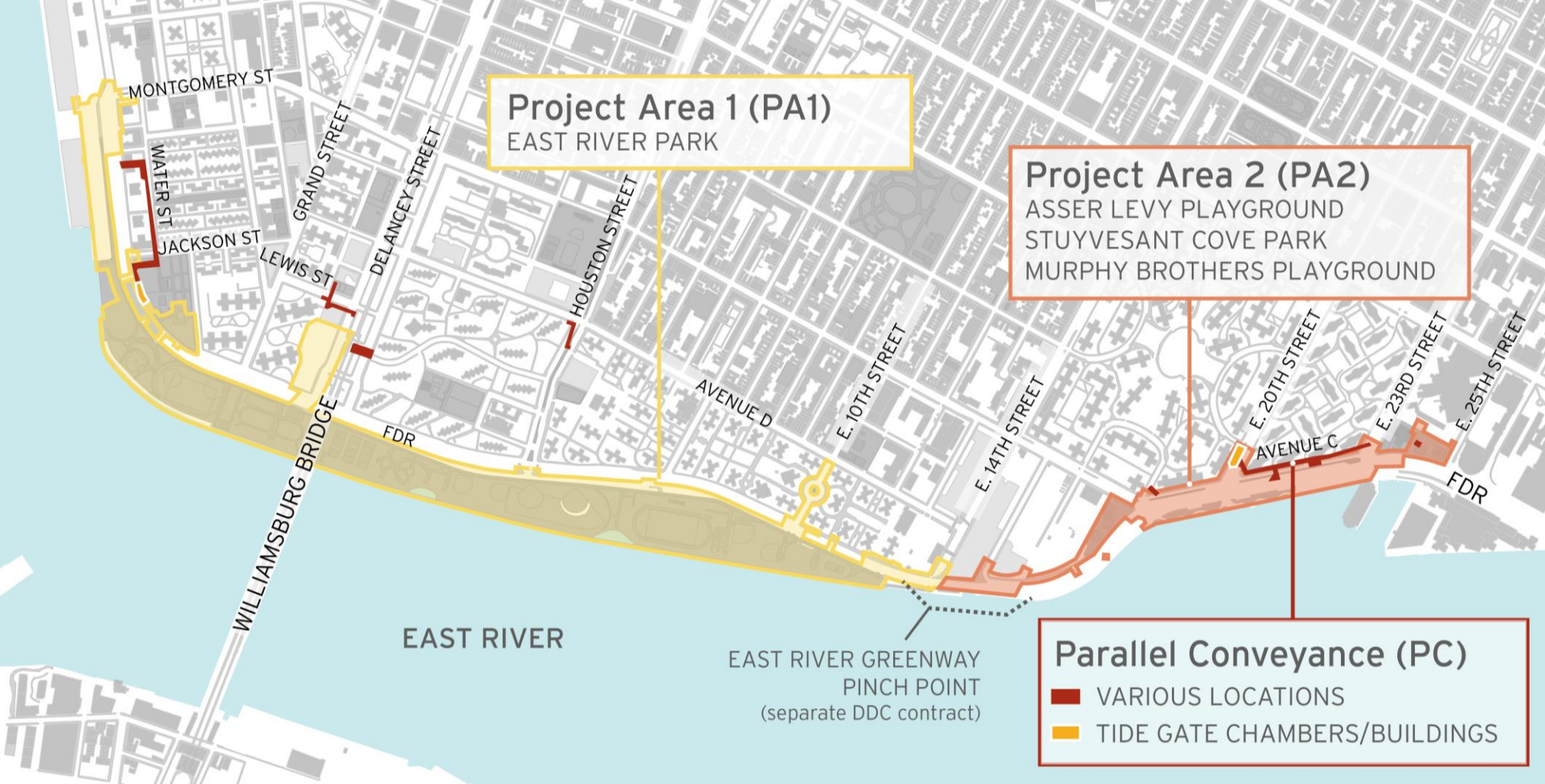
1. Introductions and ESCR Overview
2. Scope of Work in Vicinity of NYCHA Riis
  - a) East River Park
  - b) E. 10<sup>th</sup> Street Sewer Work
  - c) E. 13<sup>th</sup> Street Floodwall
  - d) E. 10<sup>th</sup> Street Bridge Work
  - e) FDR Drive Utility Crossing
3. Vibration & Air Quality Monitoring
4. Resources and Contact Information
5. Questions

## Rendering of northern portions of East River Park





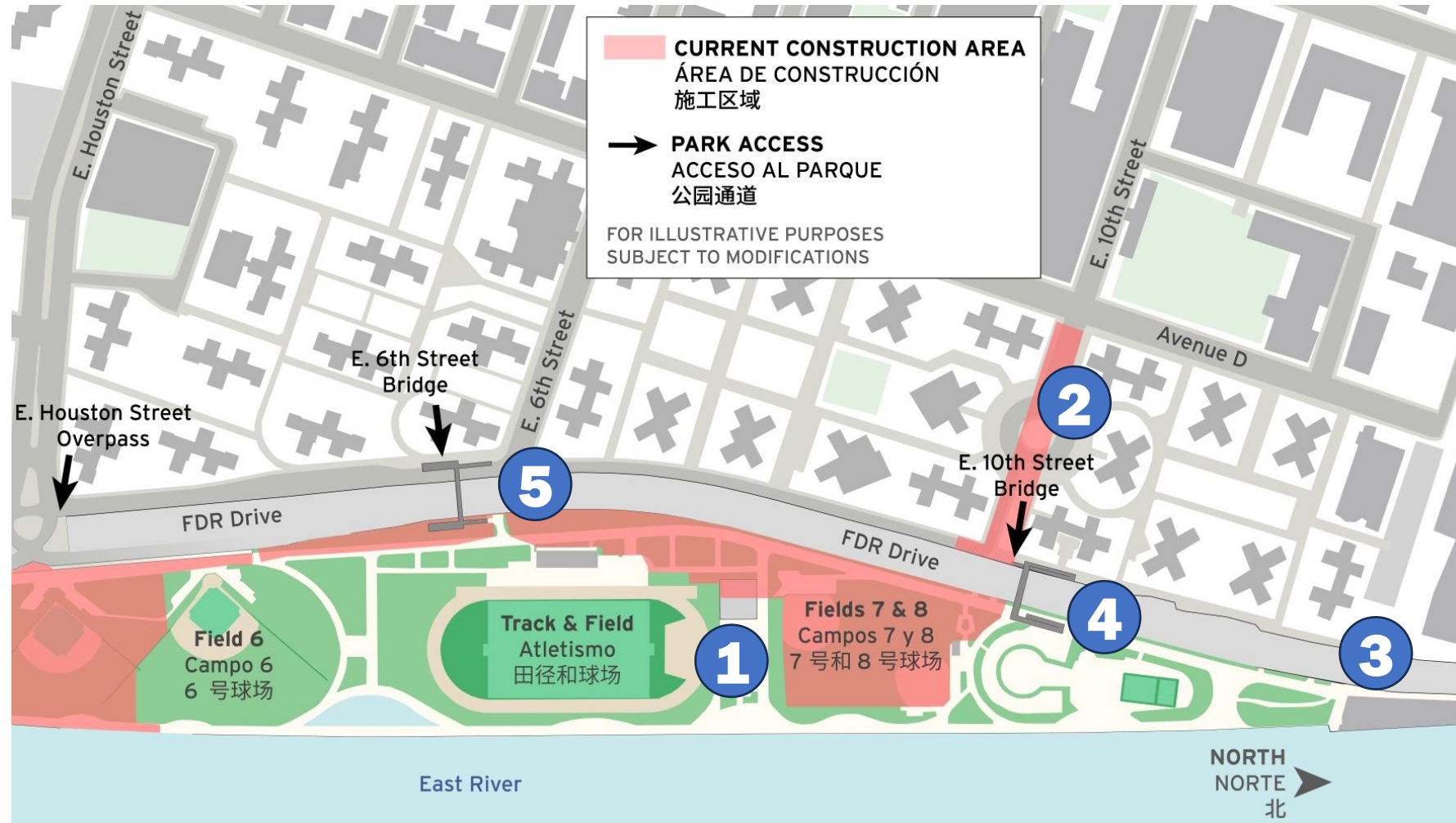
# Introductions and ESCR Overview



# PA1 | Scope of Work in Vicinity of NYCHA Riis

ALL WORK IS SUBJECT TO CHANGE

- 1 East River Park
- 2 E. 10<sup>th</sup> Street Sewer Work
- 3 E. 13<sup>th</sup> Street Floodwall
- 4 E. 10<sup>th</sup> Street Bridge Work
- 5 FDR Drive Utility Crossing





# PA1 | East River Park – Ongoing & Future Work

ALL WORK IS SUBJECT TO CHANGE

- Ballfields 7 & 8 are closed to begin **deep sewer work** and installation of flood protection
- Many amenities south of the Williamsburg Bridge are expected to open **Spring & Summer 2025**, and the exact timeline is still being determined
- As amenities in the southern portion open, **areas in the north end will begin to close**, so we can start construction on your new park amenities
- Ongoing coordination with Parks Department regarding permits and access



# PA1 | Ballfields 7 & 8: Local Law 72

ALL WORK IS SUBJECT TO CHANGE

- During routine testing of ten soil samples from Ballfields 7 & 8, two were found to contain hazardous levels of lead
- **There is no exposure to park users or nearby residents**
- Hazardous soil has been excavated and is **safely stored & covered on site** while offsite approvals are finalized
- When soil is transported for disposal off site, the ESCR team will notify the community board, elected officials, and NYCHA management
- For full reports, visit: [ESCR Environmental Monitoring](#), [DDC Lead in Soil](#)



# PA1 | Lead Discovery, Notification, and Mitigation

- Throughout construction, soil samples are collected to analyze soil conditions and determine disposal methods.
- When the soil tests return with a lead reading greater than 5.00 mg/L, the Local Law 72 procedure is initiated.
- Generally, soil is left in the ground, undisturbed, and away from the public. Much of the soil in the park is NYC typical urban fill from when the park was created. Typical urban fill is found all over NYC.

1

Lab report confirms >5mg/L lead: Contractor notifies PMCM and prepares Sampling Report and Executive Summary for PMCM/DDC review. NYS DEC and NYC DOHMH are notified.



2

Within 5 business days of contractor notifying PMCM/DDC, DDC shares Sampling Report and Executive Summary on DDC website and with elected officials and CBs.



3

Contractor will continue to test soil to determine limits of contamination, as needed. Community Air Monitoring Program (CAMP) performed whenever soil is disturbed.



4

When removal of the lead soil is scheduled, DDC will inform elected officials, CB and community through Bulletins and Advisories.



5

In accordance with CAMP and all regulations, Contractor excavates hazardous soil for transport to an approved disposal facility.



We are here!

6

Elected officials and CB will also be notified when the work is complete, and operation will be removed from the weekly bulletin.





# PA1 | Scope of Work in Vicinity of NYCHA Riis

ALL WORK IS SUBJECT TO CHANGE

- 1 East River Park
- 2 E. 10<sup>th</sup> Street Sewer Work
- 3 E. 13<sup>th</sup> Street Floodwall
- 4 E. 10<sup>th</sup> Street Bridge Work
- 5 FDR Drive Utility Crossing





# PA1 | E. 10<sup>th</sup> Street Sewer Installation

ALL WORK IS SUBJECT TO CHANGE

## COMPLETED WORK:

- ✓ March – September 2023: ConEd gas and steam work
- ✓ Summer 2023: ConEd electrical work
- ✓ December 2024: Microtunneling

## 2025

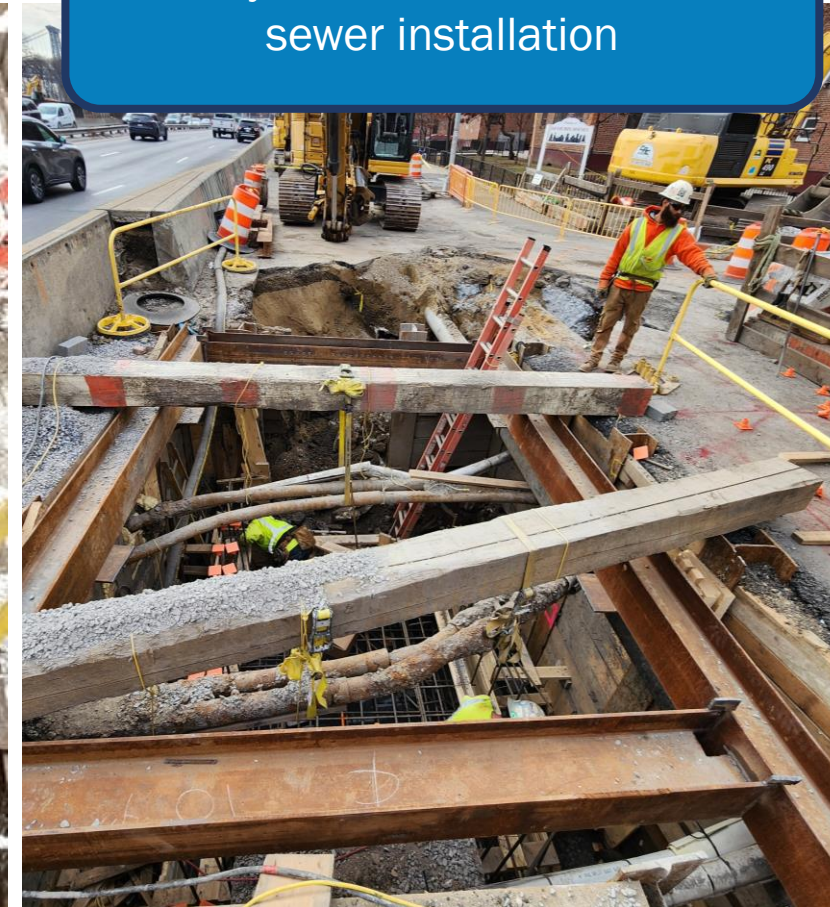
- Ongoing: excavation work, requiring daytime road & partial sidewalk closures
- Completion of sewer installation expected by May

42" sewer installed under the FDR Drive after microtunneling



January 2025

Utility work to accommodate sewer installation



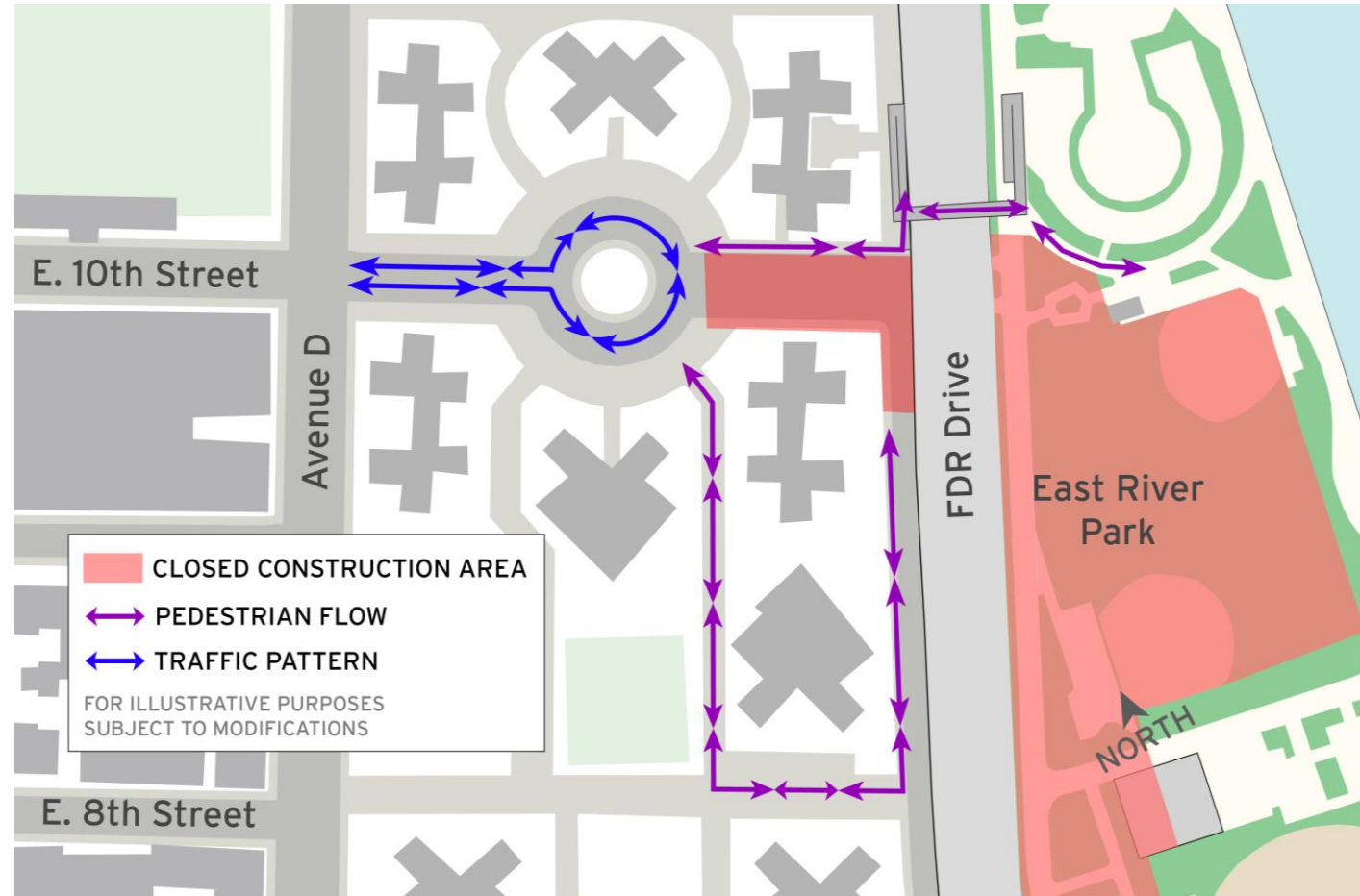
February 2025

# PA1 | E. 10<sup>th</sup> Street Construction Activities

ALL WORK IS SUBJECT TO CHANGE

## Ongoing Advisory:

- Daytime road and sidewalk closure on E. 10<sup>th</sup> Street at FDR Drive Service Road
- Work hours: 7am-3:30pm
- Access restored at the end of each work day
- Flaggers may allow for pedestrian passage. Please follow all signage and flaggers on-site to ensure safety

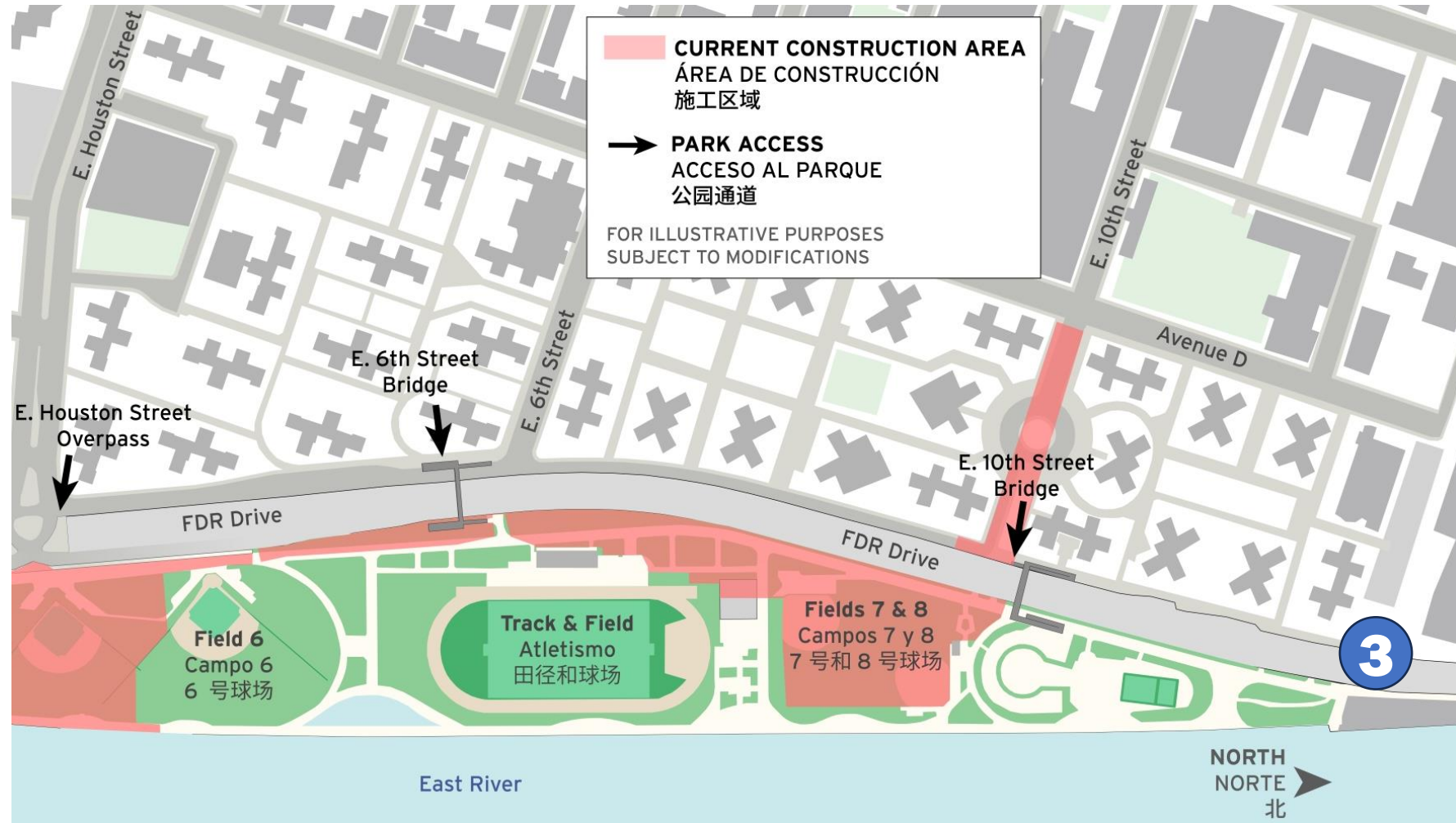




# PA1 | Scope of Work in Vicinity of NYCHA Riis

ALL WORK IS SUBJECT TO CHANGE

- 1 East River Park
- 2 E. 10<sup>th</sup> Street Sewer Work
- 3 E. 13<sup>th</sup> Street Floodwall
- 4 E. 10<sup>th</sup> Street Bridge Work
- 5 FDR Drive Utility Crossing



# PA1 | E. 13th Street Floodwall

ALL WORK IS SUBJECT TO CHANGE

- Construction on floodwalls and floodgates near E. 13<sup>th</sup> Street will begin in second half of the year
- ESCR flood protection has deep foundations to provide structural integrity, which requires driving piles very deep into the ground
- This work will be noisy and disruptive
- Most construction will occur during the day
- Formal advisories will be issued when timeline is finalized

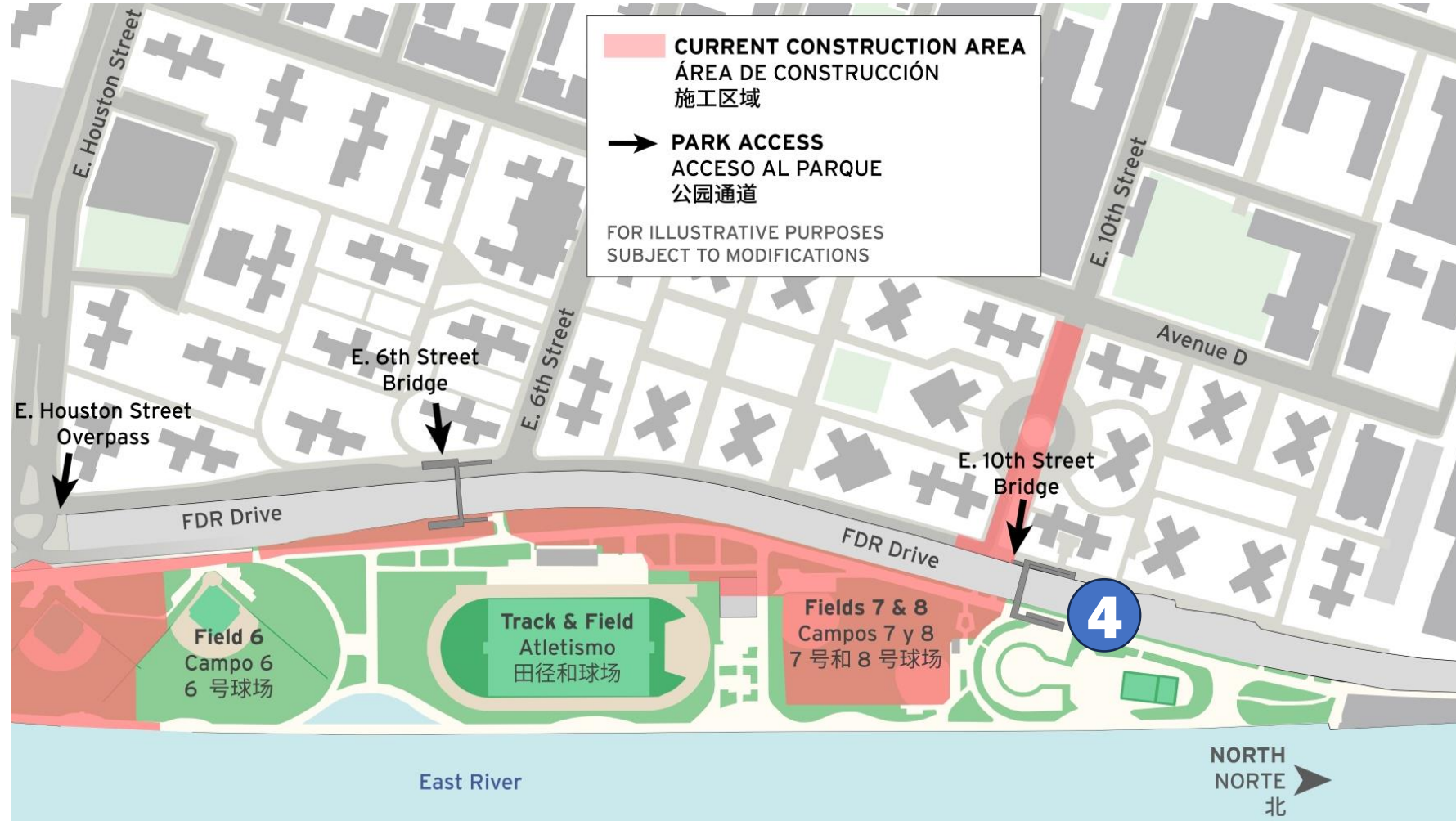




# PA1 | Scope of Work in Vicinity of NYCHA Riis

ALL WORK IS SUBJECT TO CHANGE

- 1 East River Park
- 2 E. 10<sup>th</sup> Street Sewer Work
- 3 E. 13<sup>th</sup> Street Floodwall
- 4 E. 10<sup>th</sup> Street Bridge Work
- 5 FDR Drive Utility Crossing



# PA1 | New E. 10th Street Bridge: Renderings

ALL WORK IS SUBJECT TO CHANGE

Existing bridge



New bridge to be installed under ESCR

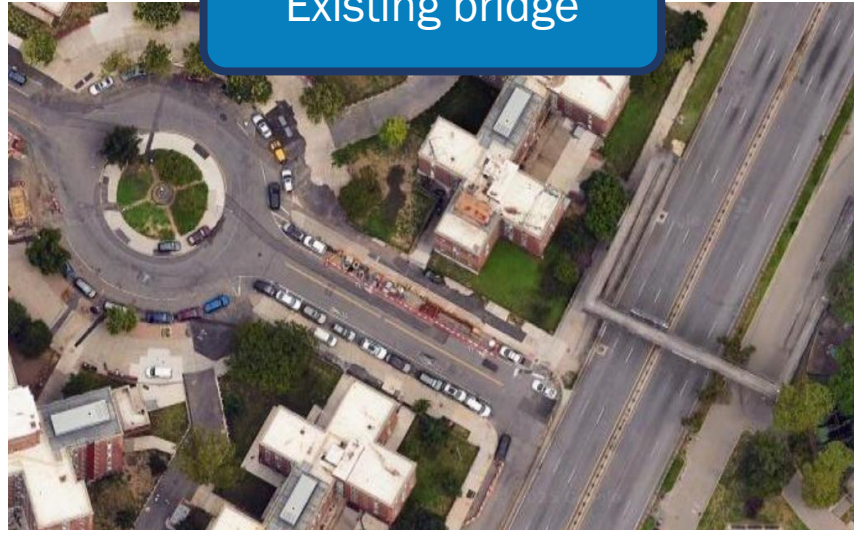




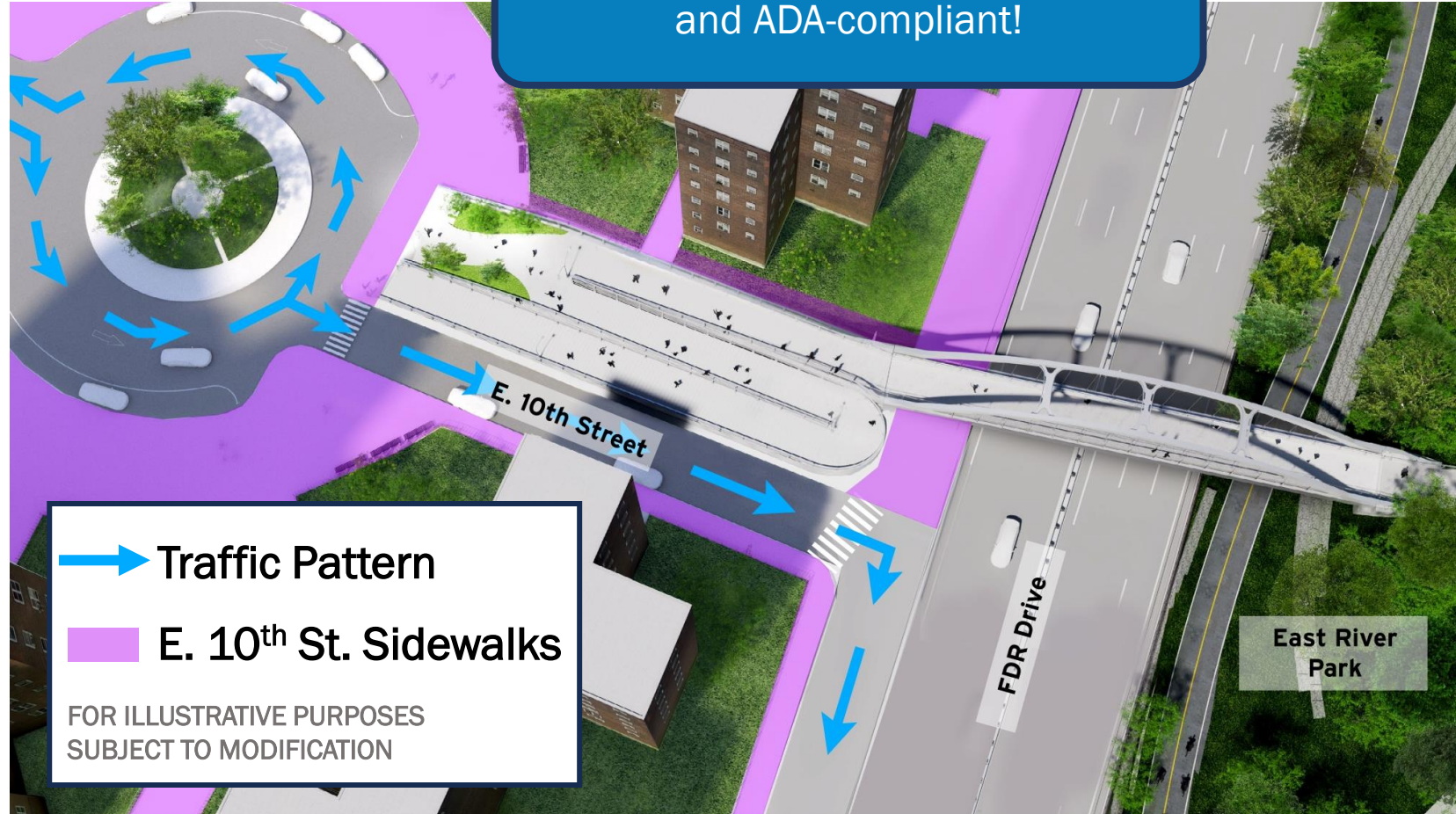
# PA1 | New E. 10th Street Bridge: Renderings

ALL WORK IS SUBJECT TO CHANGE

Existing bridge



New bridge will be **fully accessible** and ADA-compliant!



→ Traffic Pattern

■ E. 10<sup>th</sup> St. Sidewalks

FOR ILLUSTRATIVE PURPOSES  
SUBJECT TO MODIFICATION



# PA1 | E. 10th Street Bridge: Renderings

ALL WORK IS SUBJECT TO CHANGE





# PA1 | E. 10th Street Bridge Demolition: What to Expect

ALL WORK IS SUBJECT TO CHANGE

- Demolition of the existing bridge is expected to begin in the second half of 2025, likely late-summer/fall
- Most demolition work must be conducted at night due to DOT permits and FDR Drive Lane closures
- This work will be noisy and disruptive
- Sidewalk access near the ramp may be limited, but building access will always be maintained
- All detours and road closures are closely coordinated with emergency services
- Formal advisories will be issued when timeline is finalized



Old Delancey St. Bridge Removal

# PA1 | E. 10th Street Bridge: Construction Process

ALL WORK IS SUBJECT TO CHANGE

1. Bridge is manufactured in Italy ← complete
2. Parts are shipped to the U.S., stored off site ← complete
3. Assembled on site in East River Park
4. Rolled from staging area and placed onto abutments by crane or Self-Propelled Modular Transports (SPMTs) during overnight closure of the FDR Drive
5. Concrete deck installed, along with landscaping and other finishes



Corlears Hook Bridge installation



# PA1 | E. 10th Street Bridge Installation: What to Expect

ALL WORK IS SUBJECT TO CHANGE

- Installation of piles expected to begin after bridge removal
- Construction of ramps/abutments will begin first
- **Most pile driving work will be conducted during the day**
- **This work will be noisy and disruptive**
- Pedestrian and vehicle detours may be required
- Any parking around the traffic circle that is removed during construction will be restored during final restoration

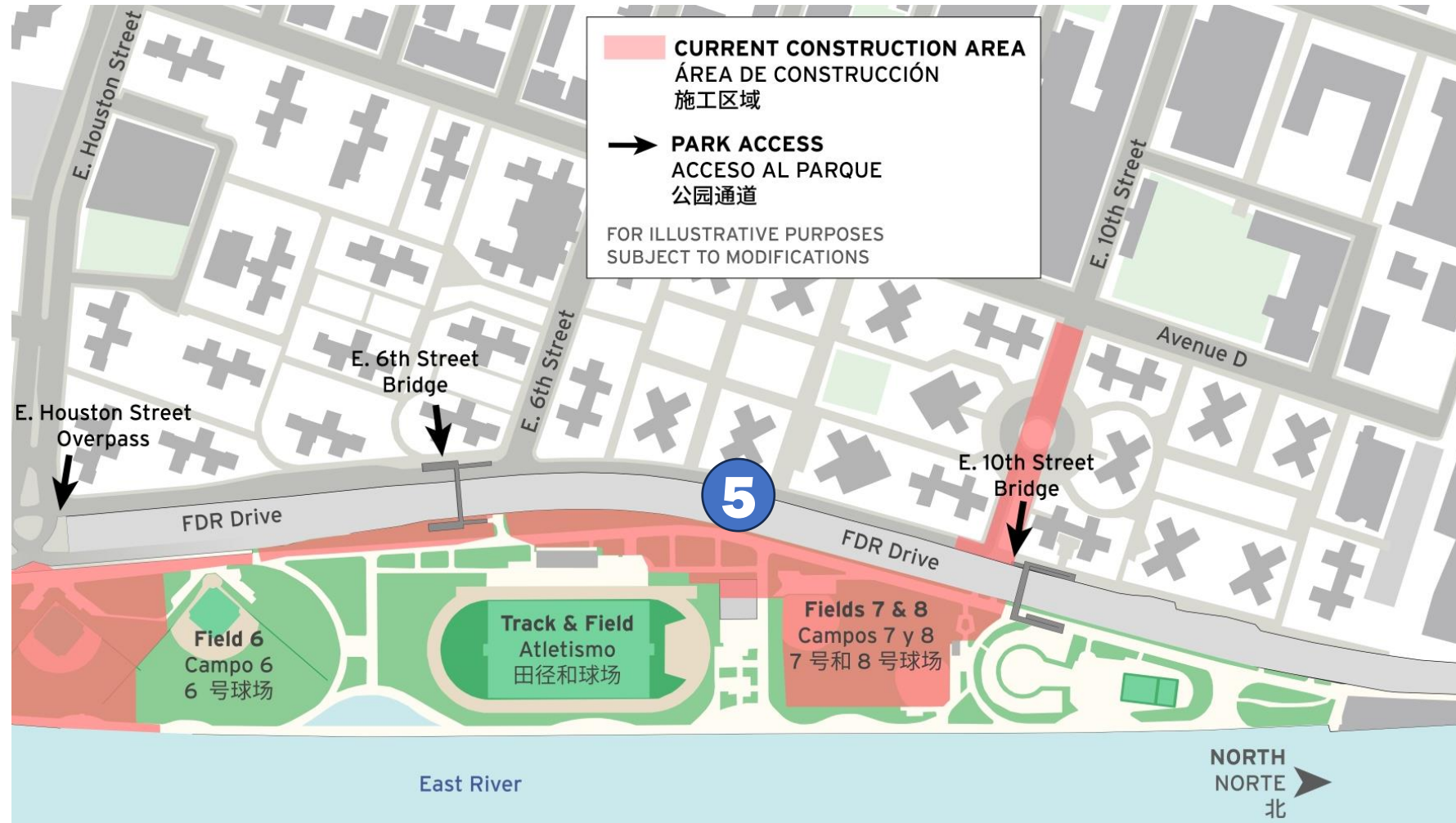


E. 10<sup>th</sup> Street Bridge and Ramp Rendering

# PA1 | Scope of Work in Vicinity of NYCHA Riis

ALL WORK IS SUBJECT TO CHANGE

- 1 East River Park
- 2 E. 10<sup>th</sup> Street Sewer Work
- 3 E. 13<sup>th</sup> Street Floodwall
- 4 E. 10<sup>th</sup> Street Bridge Work
- 5 FDR Drive Utility Crossing





# PA1 | FDR Drive Utility Crossing

ALL WORK IS SUBJECT TO CHANGE

- New gas conduits connecting to East River Park are being installed and will bring critical utilities to the new amenities
- **Some of this work must be conducted at night due to DOT permits and FDR Drive Lane closures**
- Test pits are ongoing west of the FDR Drive
- **Currently targeting April for nightwork**, but formal advisory will be issued when timeline is finalized
- All detours and road closures are closely coordinated with emergency services



---

# Vibration & Air Quality Monitoring



# ESCR | Vibration Monitoring

ALL WORK IS SUBJECT TO CHANGE

- Vibrations at critical structures are monitored during **installation of piles, sheet piles, and jet grouting**
- **Allowable limit of vibration:** 0.5-inch per second in particle velocity above ambient level
- **Critical structures under PA1 include *but are not limited to*:**
  - Transportation: elevated FDR Drive, Williamsburg Bridge, Houston Street over FDR Drive, 6<sup>th</sup> Street pedestrian bridge, L-train tunnel
  - Housing: Jacob Riis Houses, Gouverneur Gardens, former Gouverneur Hospital and Dispensary, East River Housing
  - Other: Con Edison conveyor tunnel, Fireboat House, Public School 110

While vibrations can be unsettling to people, buildings are designed to withstand a high degree of vibration

# ESCR | Air Quality Monitoring

ALL WORK IS SUBJECT TO CHANGE

- Air and noise monitors are active **24 hours/day, 7 days/week**
- The project follows all federal, state and local guidelines. To date, construction activities have not exceeded National Ambient Air Quality Standards
- Monitoring machines are on site to measure particles from construction vehicle emissions and dust as well site conditions such as wind speed and temperature
- These machines are placed strategically along the edge of active construction activities
- Environmental monitoring reports are posted to our website:

<https://on.nyc.gov/4brIXjG>

**East Side Coastal Resiliency**  
www.nyc.gov/escr

## Air Quality Monitoring

Community health and safety is extremely important to the City of New York. The East Side Coastal Resiliency (ESCR) project team is ensuring there is very limited impact on nearby air quality as we construct flood protection for New Yorkers on Manhattan's East Side.

**1. We are constantly monitoring the air quality around our construction activities.**

### WHAT ARE WE MEASURING?

**Particulate Matter (PM),** or particle pollution, is a term for the solid particles and liquid droplets found in the air.

**MEASURED SIZES:**  
**PM 2.5:** smaller particles typically from vehicle emission  
**PM 10:** larger particles typically from dust

**NET PARTICULATE MATTER** is the standard metric for monitoring and assessment of construction impacts on air quality, as well as compliance with federal limits.

**Control dust and limit emissions during construction.**

**Control dust and limit emissions:**

- Use water spray for roads, trucks, truck wheels, excavation areas, and stockpiles
- Cover stockpiles with anchored tarps
- Use extra care, including more frequent application of these measures, during dry and high wind periods

**These steps are implemented during daily construction activities and are increased if monitoring machines indicate additional action is needed. Visit the ESCR website to view weekly Construction Bulletins and Advisories.**

**DID YOU KNOW?** One barge has the capacity to divert up to 57 trucks from local roads.

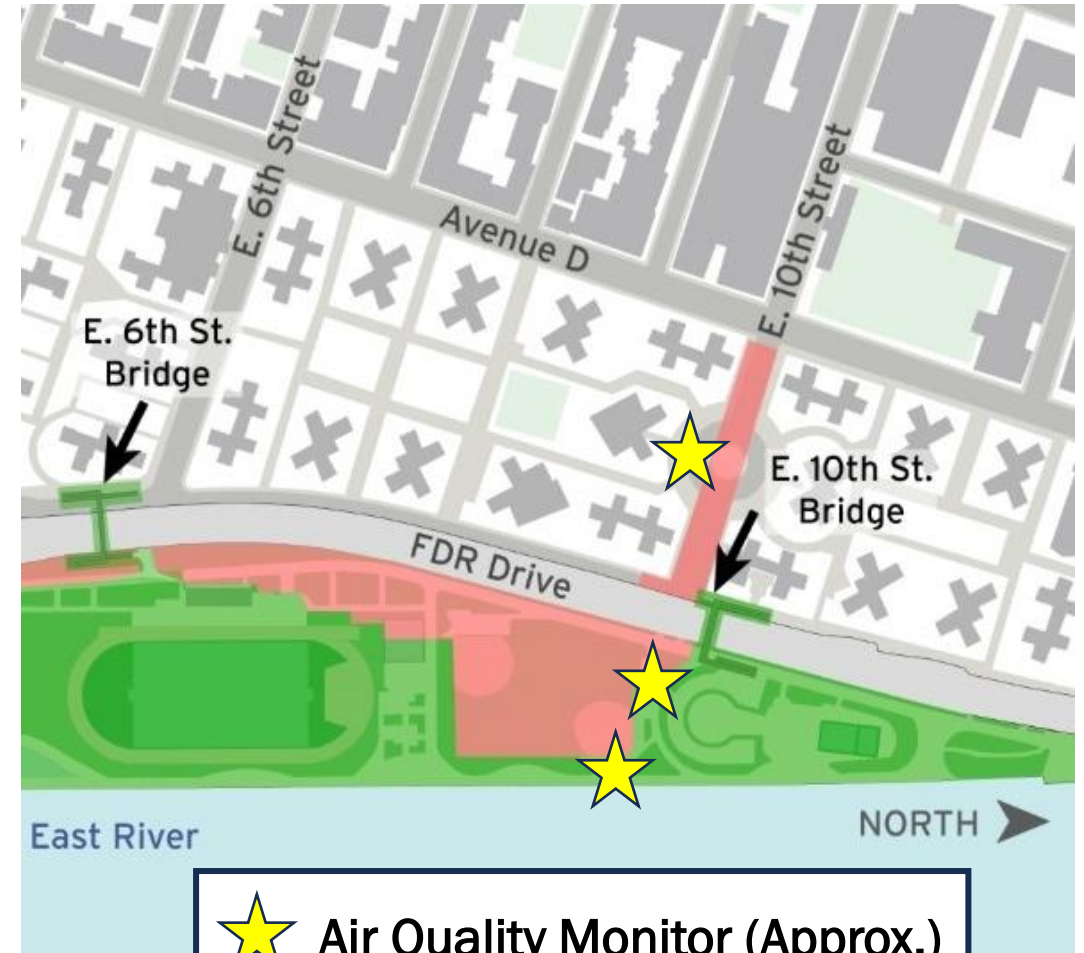
Logos: NYC DDC Department of Design and Construction, NYC Mayor's Office of Resiliency, NYC Parks, NEW YORK CITY DOT, NYC Environmental Protection



# ESCR | Air Quality Monitoring

ALL WORK IS SUBJECT TO CHANGE

- Multiple air quality monitors in vicinity of Riis Houses
- In 91 days (from November through January), there were 4 long-duration alerts (60+ minutes)
- Dust mitigation measures applied each time construction activities caused an alert
- Raw data from February still being analyzed
- Environmental monitoring reports are posted to our website: <https://on.nyc.gov/4brlXjG>



- ★ Air Quality Monitor (Approx.)
- ➔ Park Access
- Closed Construction Area

FOR ILLUSTRATIVE PURPOSES  
SUBJECT TO MODIFICATION

# PA1 | Contact Us & Resources



**ESCR Inquiry Tool**

Questions? ¿Preguntas? 问题?

Community Construction Liaisons (CCLs):

- Vanessa Gomez #(347) 628-8724
- Pauline Chan #(929) 717-9015
- Email: [ESCRCL1@ddccr.com](mailto:ESCRCL1@ddccr.com)

[nyc.gov/escr](https://nyc.gov/escr)



***E. 10<sup>th</sup> Street community notification board located at southern edge of traffic circle***





# NEED MORE INFORMATION?

## VISIT US AT: [www.nyc.gov/escr](http://www.nyc.gov/escr)

### East Side Coastal Resiliency

The East Side Coastal Resiliency (ESCR) Project is a coastal protection initiative, jointly funded by the City of New York and the federal government, aimed at reducing flood risk due to coastal storms and sea level rise on Manhattan's East Side from East 25th Street to Montgomery Street. The boundaries of this project correspond with the natural "pinch-points" in the 100-year floodplain: areas where the land is higher along the coastline, making it easier to close the system off from water entering from the north and south. The project design integrates flood protection into the community fabric, improving waterfront open spaces and access, rather than walling off the neighborhood. Construction on the East Side Coastal Resiliency project will begin in Fall 2020 and continue through 2025.

 <b>Construction Progress</b>	 <b>Resiliency &amp; Flood Protection</b>	 <b>Project Background &amp; Goals</b>	 <b>Project Design</b>
<b>Construction Notices</b> View our most recent community presentations for updates as we prepare for upcoming construction activities.	<b>Resiliency and Flood Protection</b> Learn more about ESCR's resiliency and the forward-thinking flood protection measures being implemented to protect 110,000 New Yorkers from the impacts of climate change.	<b>Project Background and Goals</b> Read about the history and background of ESCR, and the goals driving this technically complex infrastructure project.	<b>Project Design</b> From flood protection measures to bike lanes and ball fields, the ESCR project is improving open spaces and access in the Lower East Side while strengthening the city's coastline.

