

# East Side Coastal Resiliency Construction Update

CB6 Land Use Committee Meeting

Virtual Meeting

September 22, 2022



Mayor's Office of  
Resiliency

# Highlights

- ESCR Envision Gold & WEDG
- Community & Work With Us Updates
- Overview of Contracts
  - Project Area 2
  - Project Area 1

# ESCR Envision Gold & WEDG



**ESCR Receives Envision Gold Award ▶**

LEARN MORE

"It is affirmational to be honored for our work to protect New Yorkers from the impacts of climate change," said Mayor Eric Adams. "In the face of the biggest environmental threat we all face – we will continue to plan ahead, innovate, and get stuff done for New Yorkers."

<https://www1.nyc.gov/site/ddc/about/press-releases/2022/pr-080122-ESCR-ISI.page>



# ESCR Call for Art Event



June 22, 2022, Call For Art Certificate Event



Asser Levy and Murphy Brothers Panels moving to East River Park this week

<https://www1.nyc.gov/site/escr/community-engagement/call-for-art.page>



# ESCR Newsletter

- ESCR newsletter  
[https://www1.nyc.gov/assets/escr/downloads/pdf/ESCR-Newsletter\\_04\\_Final.pdf](https://www1.nyc.gov/assets/escr/downloads/pdf/ESCR-Newsletter_04_Final.pdf)

**ESCR NEWS**

East Side Coastal Resiliency  
 www1.nyc.gov/assets/escr  
 Second Quarter 2022



### East Side Coastal Resiliency

The East Side Coastal Resiliency (ESCR) project is a coastal protection initiative, jointly funded by the City of New York and the federal government, aimed at reducing flood risk due to coastal storms and sea level rise. The ESCR project will protect 110,000 New Yorkers from the impacts of climate change by reducing flood risk to communities, properties, businesses, critical infrastructure, and public open spaces. In addition to providing flood protection, the project will strengthen and enhance waterfront spaces on Manhattan's East Side by improving accessibility, increasing ecological diversity, and delivering improved recreational amenities to a vibrant and highly diverse community. The ESCR project is among the largest and most technically complex infrastructure projects in New York City's history.

The ESCR team is currently constructing the 2.4 mile flood protection system consisting of floodwalls and floodgates that are designed to blend into the fabric of the community by integrating with local streets, the elevated East River Park, and the new landscape surrounding Corlears Hook Park, Murphy Brothers Playground, Stuyvesant Cove Park, and Asser Levy Playground.

**ESCR Highlights** for this quarter include the re-opening of [Asser Levy Playground](#) and the installation of floodgate 1.8 in Project Area 2 (PA2). The team is very proud of this milestone accomplishment and excited that the playground has reopened to the community within two years of the construction start.

If you visit the new playground, you will also see the [Community Wall for Art](#) panels installed there, at Murphy Brothers Playground until Labor Day and at East River Park through the year (see page 5 for more details).

**Also in this issue, we highlight ESCR's Envision Gold award on page 4.**



DDC Group Photo with Mayor Adams at Asser Levy Playground

### Project Area 1

East River Park and adjacent areas

**Construction in East River Park continues**

Work in Project Area 1 (PA1) is concentrated between Montgomery Street and East 15th Street, largely focused on East River Park. See [ESCR Newsletter 3](#) for more information on the background of Project Area 1 (PA1).

Department of Design and Construction  
 City of New York  
 NYC  
 DOT  
 NYC




**WATERFRONT / ESPLANADE**

- Soil Stabilization
- Remove Esplanade
- Install new combi-wall & cap wall
- Install New Esplanade
- Fill (as needed by location)
- Site Elements & Materials (esplanade & parks elements)

the larger parallel conveyance system installed to improve drainage during flooding events. For [Waterfront operations](#), the esplanade removal is well underway and soil stabilization is just beginning.

**What is Soil Stabilization?**

Soil Stabilization is a process to improve the solidity of the existing soil. ESCR is installing a grid of **crushed stone columns** along the waterfront where coastal flooding and other extreme weather events could potentially impact the existing soil stability. First, an auguring machine is used to auger a deep hole in the soil. Next, the stone column rig injects a hollow pipe into the soil. Lastly, the crushed stone is fed into and vibrated down the pipe into the existing soil to form a stone column.



Soil Stabilization at East River Park, September, July 2022

3 of 5



# ESCR Work With Us

## [Save the Date for the 28th Annual 2022 Competitive Edge Conference](#)

**October 31, 2022, 9am – 3pm**

The must-attend event for MWLBE | DBE | SDVOB | Prime Contractors  
Since 1993, the Competitive Edge Conference has linked the region's small businesses, including MWLBEs and Locally Based Enterprises, with leading decision-makers across industries.  
Pier 60 Chelsea Piers, NY

## [Getting Started: Responding to Contracting Opportunities](#)

**September 21, 2022, 11:00 am - 12:00 pm EST**

The Mayor's Office of Contract Services upcoming PASSPort vendor webinar. This webinar is part of our monthly PASSPort vendor webinar series: Getting Started: Contracting with NYC. Each webinar covers an introduction to MOCS, the basics on how to get set up in PASSPort, and the featured topic. Registration is required to attend and receive webinar access details.

**Next ESCR Quarterly Work With Us Session end of October!**



## Careers & Procurement

The ESCR project team is committed to working with M/WBE and Section 3 firms. As we onboard our contractors, we continue to assess workforce needs.

### Current Job and Contracting Opportunities

- 001 - Printing Shop/Print Services (HNTB-LiRo)
- 003 - Senior Inspector (HNTB-LiRo)
- 004 - Inspector II (HNTB-LiRo)
- 005 - Office Engineer (HNTB-LiRo)
- 006 - Assistant Office Engineer (HNTB-LiRo)
- 009 - Administrative Assistant (IPC)
- 010 - Payroll Specialist (IPC)

View [job descriptions](#) and apply through our [online portal](#).

Visit the New York City Department of Design and Construction's (NYCDDC's) procurement site for other opportunities related to the ESCR project as they are made available.

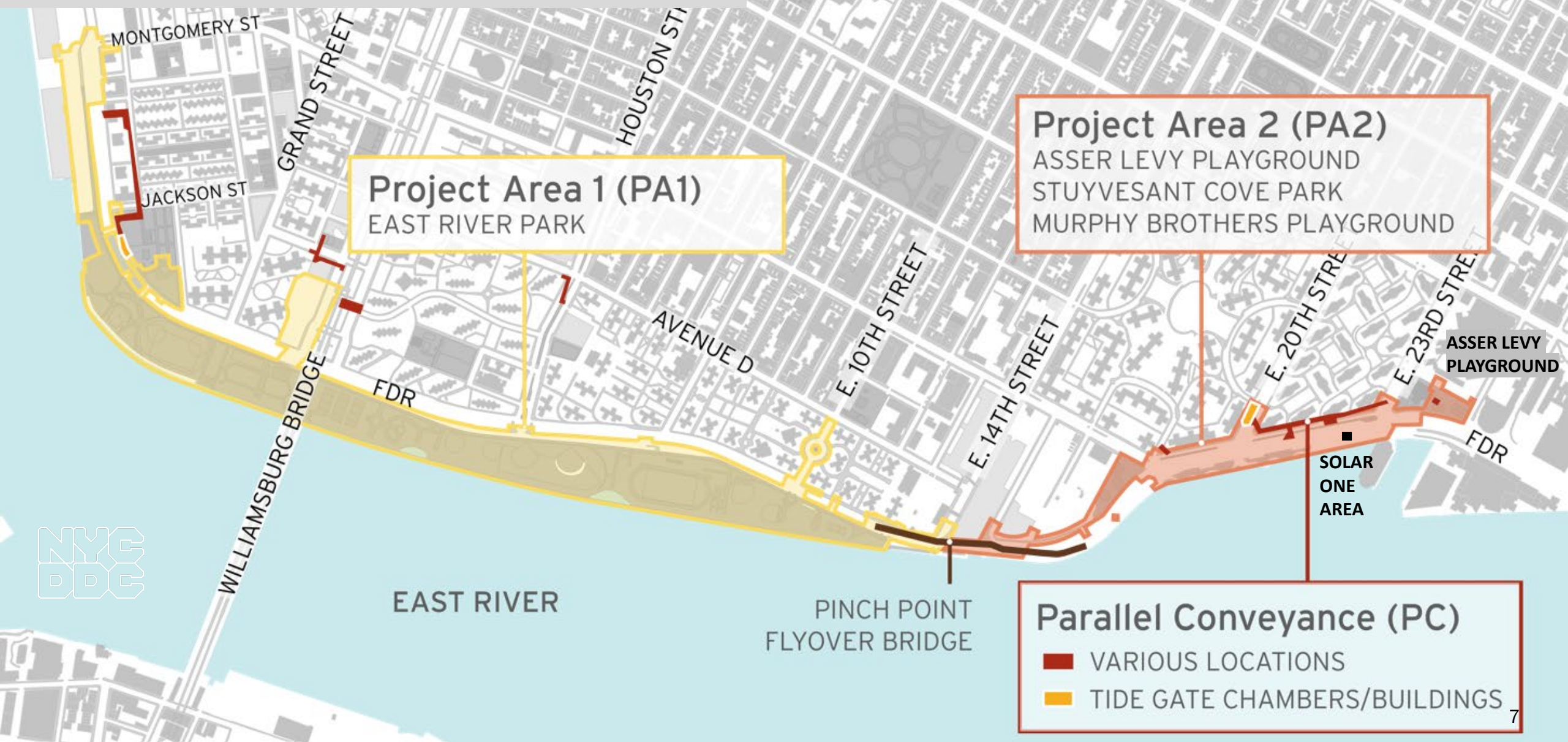
- [Find careers with NYCDDC](#)
- [Work with DDC](#)

<https://www1.nyc.gov/site/escr/contact/work-with-us.page>

Have a Question on Hiring?

[https://pima.ddccr.com/public/comment/project-comment-dynamic?project\\_id=14047&pe\\_id=2565](https://pima.ddccr.com/public/comment/project-comment-dynamic?project_id=14047&pe_id=2565)

# PROJECT AREA OVERVIEW



# Overview of Contracts

## Project Area 1 (PA1)

- NTP issued August 2021
- Partial Closures:
  - East River Park south of Stanton St.
  - Greenway closure to E. 10<sup>th</sup> St.
  - Corlears Hook Park & passive lawn
- Delancey St. & Corlears Hook pedestrian bridges removed. Corlears Hook temp ped Bridge installed.
- ongoing ConEd Work
- esplanade removal, soil stabilization and deep sewer work in progress
- floodwall construction activities ongoing at Montgomery Street Greenway

## Project Area 2 (PA2)

- NTP issued November 2020
- Asser Levy Playground Open
  - Gate 18 installed
- Stuyvesant Cove Park including Solar One Area under construction
  - over 1,000 ft of floodwall installed
  - Gate 14 installed
  - site restoration north of E 20<sup>th</sup> St. underway
  - floodwall construction in progress north of E 20<sup>th</sup> St. underway
- **Murphy Brothers work anticipated to begin week of September 26, 2022**

## Parallel Conveyance (PC)

- contract awarded in May to NYCC JPL JV
- NTP scheduled for September 2022
- construction start anticipated in fall 2022
- contract duration is approximately 4 years

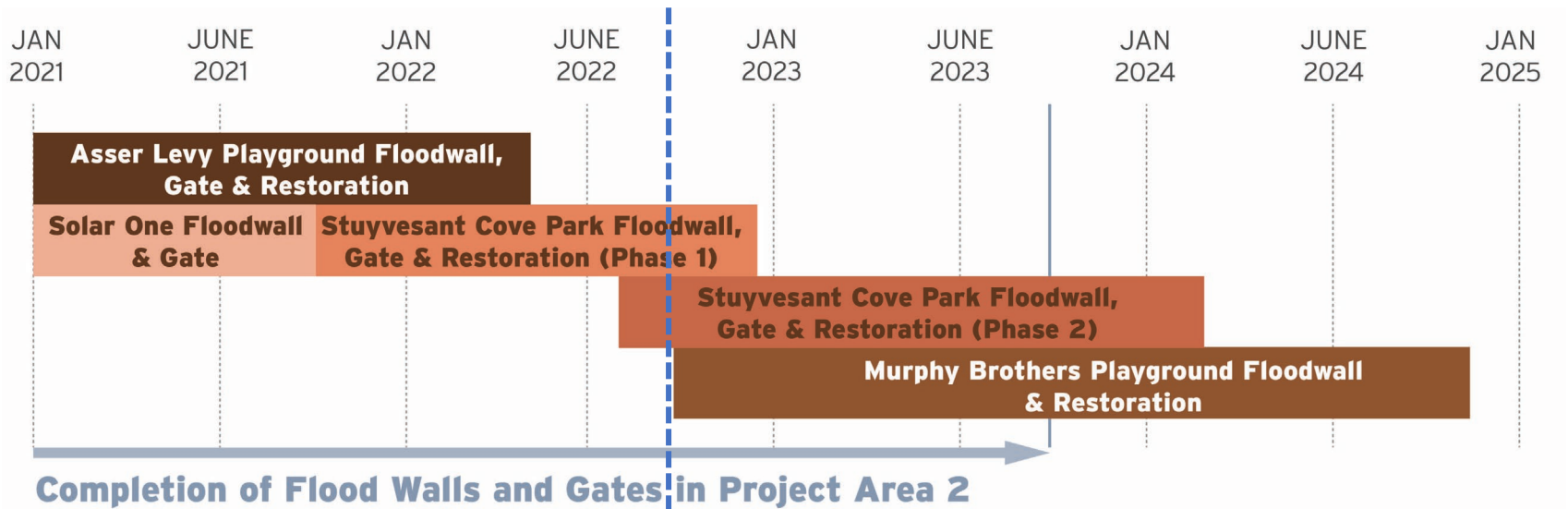


---

# Project Area 2

# PA2 | Construction Progress

ALL WORK IS SUBJECT TO CHANGE



# PA2 | Construction Progress

ALL WORK IS SUBJECT TO CHANGE

- 1. Asser Levy Playground**
  - opened to public
  - floodwall and floodgate #18 installed
- 2. West Service Road:**
  - floodwall construction
  - floodgate #17 work in progress
  - completion anticipated in Spring 2023
- 3. E 23<sup>rd</sup> St. Intersection:**
  - utility work & floodwall construction
  - floodgate work #15 & #16 upcoming
- 4. Stuyvesant Cove Park north of E 20<sup>th</sup> St.:**
  - seat wall construction, grading & finish pavement
  - Greenway construction ongoing
  - Scheduled to reopen in November after final planting





# PA2 | Construction Progress

ALL WORK IS SUBJECT TO CHANGE

1. Stuyvesant Cove Park south of E 20 St:
  - ongoing floodwall construction
  - ferry access will remain open
2. FDR Dr. NB exit 7 ramp:
  - pile installation and ECS work under FDR
3. E 15th Street between Ave C and FDR Dr. within Con Edison
  - sewer reconstruction
4. Avenue C between E 20 St and E 18 St
  - ConEd utility work
5. Murphy Brothers Playground
  - work anticipated to begin week of 9/26/22

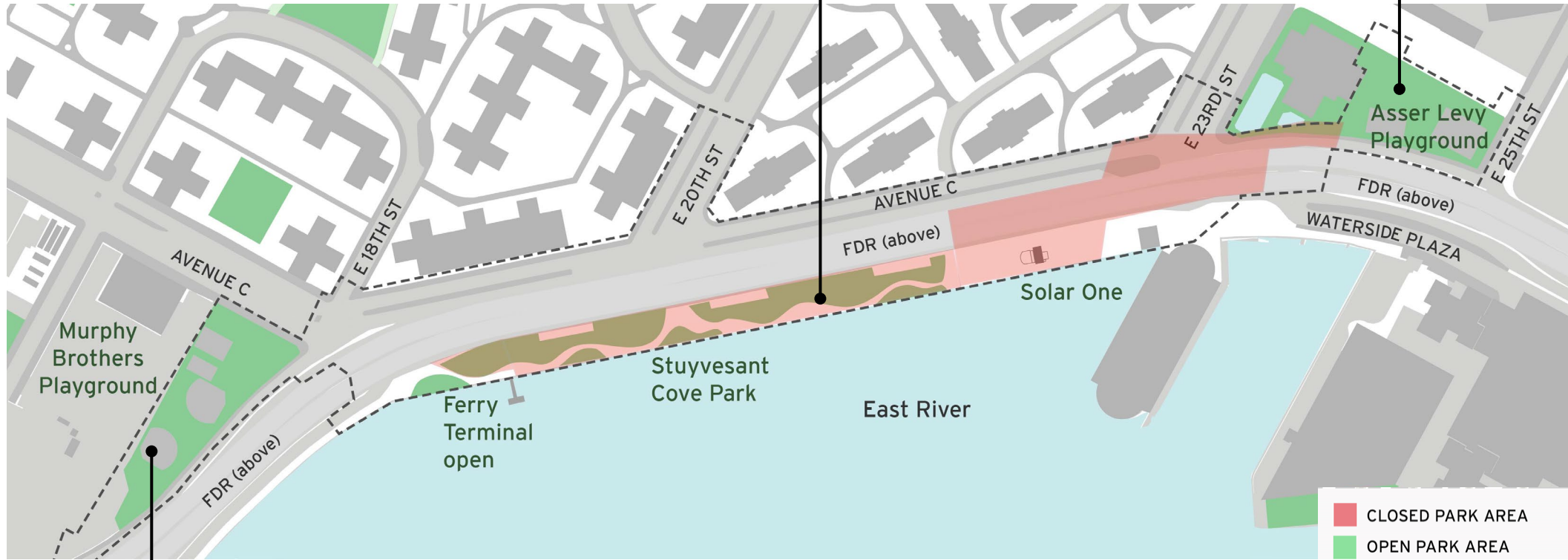


# PA2 | Open Areas

ALL WORK IS SUBJECT TO CHANGE

STUYVESANT COVE PARK NORTH OF #20<sup>TH</sup> STREET TO OPEN LATER THIS YEAR ONCE PLANTING IS COMPLETE IN COORDINATION WITH EDC AND SOLAR ONE

ASSER LEVY PLAYGROUND OPEN



MURPHY BROTHERS PLAYGROUND WORK ANTICIPATED TO BEGIN WEEK OF 9/26

# PA2 | Current Greenway Access

- Stuyvesant Cove Park under construction
- Stuyvesant Cove Park Ferry access remains open and is accessible from E18th St E20th St via the Greenway
- the Greenway from E20th St south will remain open until the Greenway from E20th St north reopens





# PA2 | Greenway Access Look-ahead

## Fall 2022

- Greenway from E 20<sup>th</sup> St heading north will reopen
- Greenway from E20th St south will close and access to East River Park from Stuyvesant Cove Park will end
- **Stuyvesant Cove Park Ferry** access will remain open
- More details and dates to follow



# PA2 | Installation of Gate 18 Asser Levy Playground



Asser Levy Playground Floodgate #18 – July 2022

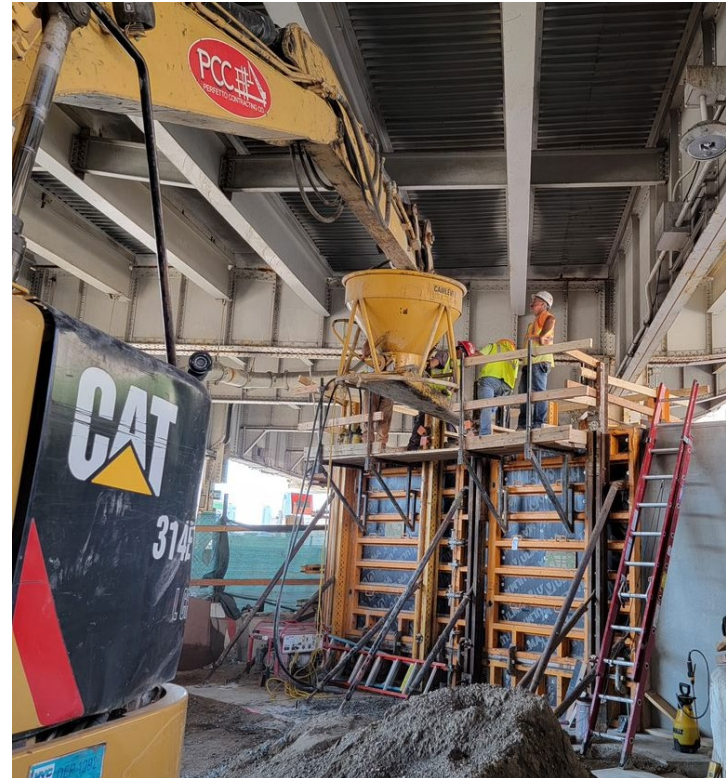




# PA2 | Floodwall under FDR Dr at E 23<sup>rd</sup> Street



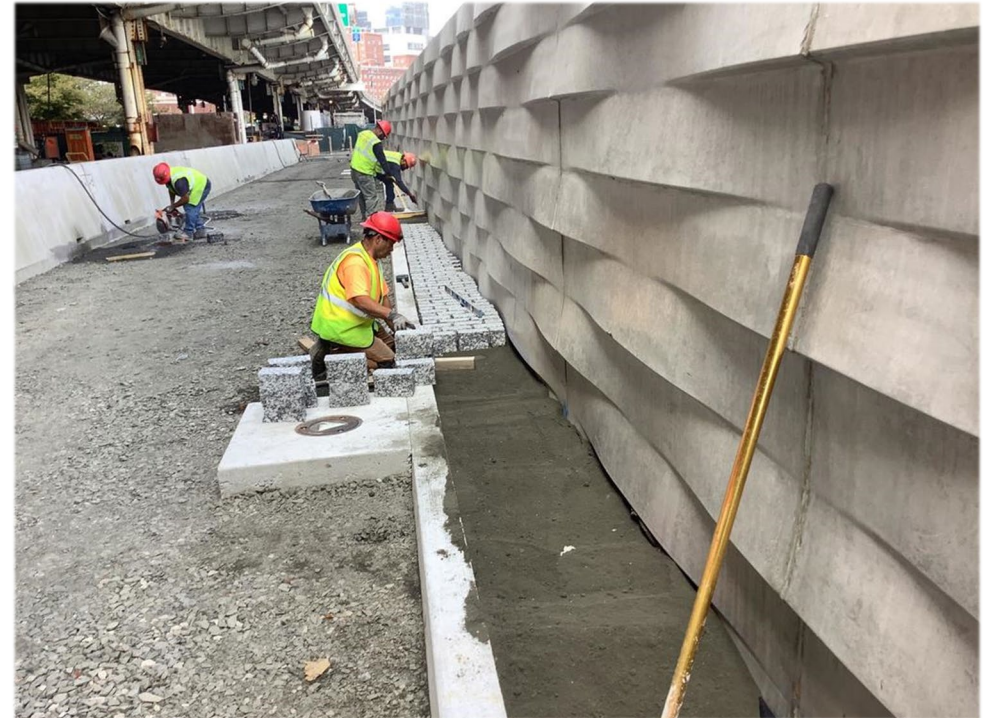
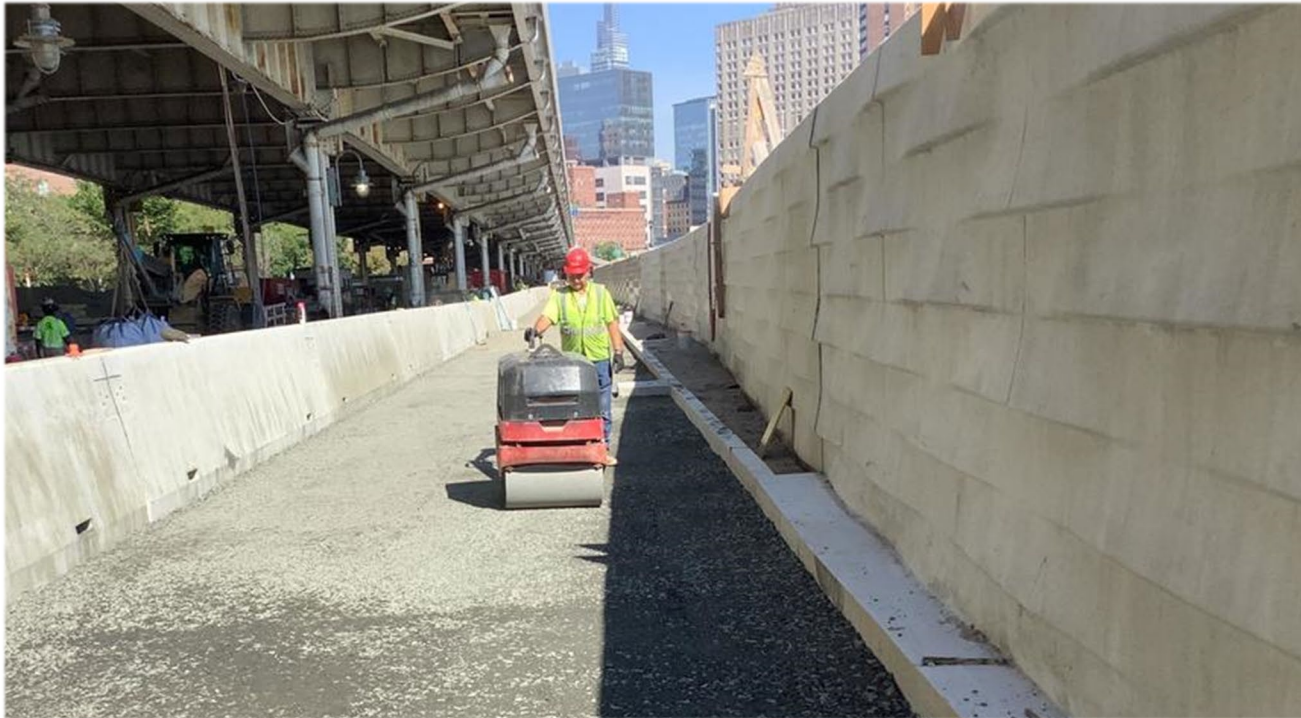
Floodwall under FDR Dr. at E 23<sup>rd</sup> Street – July 2022



Floodwall along West Service Road – Sept '22



# PA2 | Stuyvesant Cove Park Greenway South of E 20<sup>th</sup>



*Stuyvesant Cove Park Greenway South of E20th – September 2022*



# PA2 | Stuyvesant Cove Park Seatwall and Pavement



*Stuyvesant Cove Park seatwall, grading and pavement – September 2022*



# PA2 | Murphy Brothers Playground

ALL WORK IS SUBJECT TO CHANGE

1. Bus stop relocation in coordination with City
2. Possible Citibike relocation in coordination with City
3. Sidewalk access will remain open unless otherwise specified



*Murphy Brothers Playground from Avenue C*



*Murphy Brothers Playground Preliminary Design Rendering*

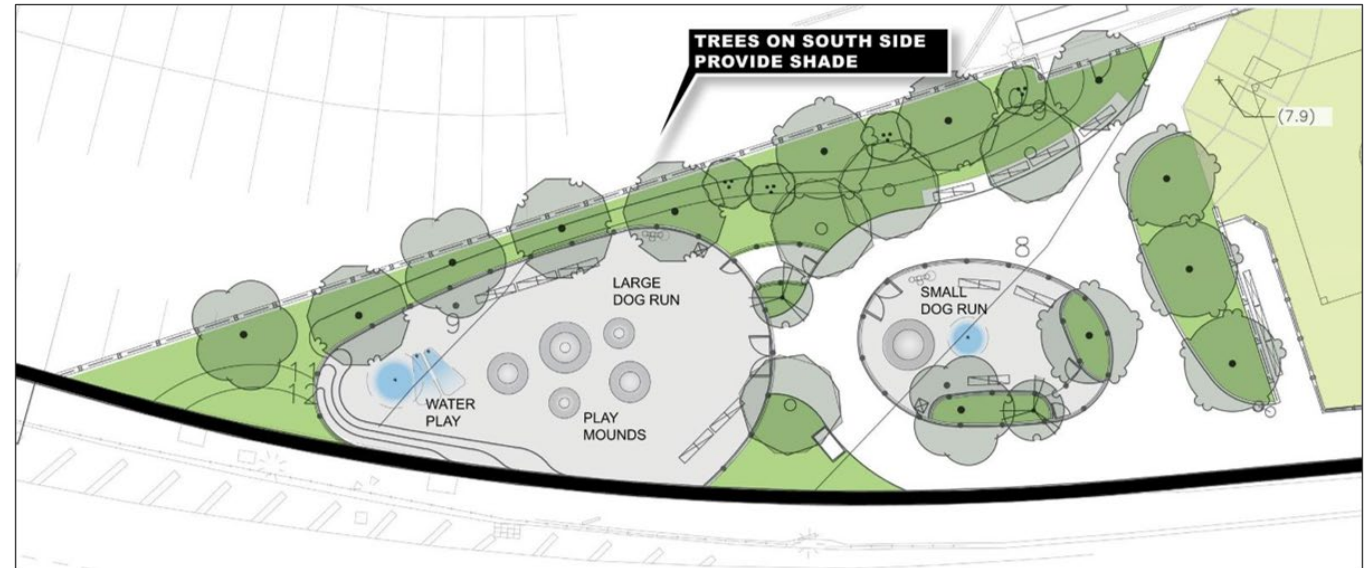


# PA2 | Murphy Brothers Playground

ALL WORK IS SUBJECT TO CHANGE



Murphy Brothers Playground Final Design Plan Rendering



Murphy Brothers Playground Dog Run

---

# Project Area 1

# PA1 | September 2022 Construction Activities

ALL WORK IS SUBJECT TO CHANGE

1. Soil stabilization activities and esplanade dismantling along the waterfront. Deep sewer activities and pile install.  
**Tennis House demolition complete.**
2. Delancey Street utility, pile and abutment work (park side).
3. Corlears Hook Park pile installation for new bridge.
4. Passive lawn partial closure for utility work.
5. ConEd utility work near Montgomery Street & South Street.
6. **Montgomery St. – Cherry St. Greenway floodwall activities.**
7. Amphitheater asbestos abatement ongoing

8. ConEd work in Shared Use Path E. Houston Street to E. 10th Street will continue through Q2 2023.  
Slip Ramps in use.
9. Ongoing partial FDR lane closures continue at various locations.

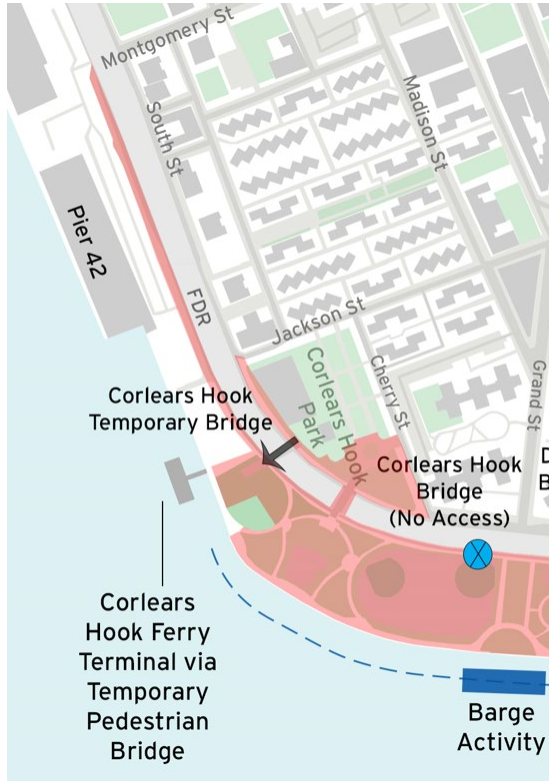
Weekly Bulletins & Advisories are issued with construction activities.  
Saturday work is anticipated for some work operations as indicated.





# PA1 | Access Map and Open Areas East River Park

ALL WORK IS SUBJECT TO CHANGE



## PROJECT AREA 1 | EAST RIVER PARK PEDESTRIAN ACCESS PLAN As of September 2, 2022



Access Map: [https://www1.nyc.gov/assets/escr/downloads/pdf/ESCR\\_SANDRESM1\\_Greenway\\_AccessPlan\\_090222.pdf](https://www1.nyc.gov/assets/escr/downloads/pdf/ESCR_SANDRESM1_Greenway_AccessPlan_090222.pdf)

NYC Parks ESCR Neighborhood Recreational Resources: <https://www.nycgovparks.org/planning-and-building/planning/neighborhood-development/east-side-coastal-resiliency/map>



# PA1 | Community Impacts

- Detours and lane closures
  - Vehicular travel lane closures, detours and new traffic patterns
  - Cyclists and pedestrian detours
  - Signage will be posted in advance within the affected areas. Traffic Enforcement Agents and flaggers will be present when necessary to assist vehicles and pedestrians
- Public transportation will be maintained at all times including Ferry landings
- Emergency vehicle and pedestrian access to sidewalks will be maintained at all times
- Water Service Interruptions:
  - During the project there may be some service interruptions. To allow for water line replacement, existing water service must be temporarily shut off.
  - Advance notice will be provided before any service interruption. Water service will be restored at the end of each night.
- **Environmental Monitoring**
  - Air, noise, and vibration monitors are active 24 hours/day, 7 days/week
  - Air monitoring summaries are available on the ESCR Environmental Monitoring webpage, with verbal updates provided at Community Advisory Group Meetings
  - The project follows all federal, state and local guidelines. To date construction activities have not exceeded National Ambient Air Quality Standards
  - The ESCR Environmental Fact Sheet can also be found on the ESCR website.

<https://www1.nyc.gov/site/escr/project-updates/environmental-monitoring.page>



Community health and safety is of the utmost importance to the City of New York, the NYC Department of Design and Construction (NYC DDC), and the East Side Coastal Resiliency (ESCR) team. The ESCR project is committed to providing the community with quarterly air quality monitoring summaries throughout construction.

The screenshot displays the 'Environmental Monitoring' section of the East Side Coastal Resiliency Project website. It features a navigation menu with 'Project Updates' selected. The main content area is titled 'Air Quality' and includes a list of 'PA1 Construction Notices' and 'PA2 Construction Notices'. A section titled 'Air Quality' explains the project's commitment to monitoring air quality and lists four key measures: 1. Air Quality Management Plan, 2. Daily Air Quality Mitigation Techniques, 3. Daily Air Quality Monitoring, and 4. Air Quality oversight by environmental agencies. Below this, there are sections for 'Project 1 Area Monitoring Report' and 'Project 2 Area Monitoring Report', each with a list of reports and download links. A 'Local Law 72' section mentions compliance with federal, state, and local guidelines. On the right, there is a detailed infographic titled 'Air Quality Monitoring' which includes a diagram of 'Monitor A (UPWIND)' and 'Monitor B (DOWNWIND)' measuring 'NET PARTICULATE MATTER'. The infographic explains that PM 2.5 (smaller particles) is typically from vehicle emissions, while PM 10 (larger particles) is typically from dust. It also states that monitoring machines are placed strategically along the edge of active construction activities. Below the infographic, there are two main points: '1. We are constantly monitoring the air quality around our construction activities.' and '2. We are taking steps to control dust and limit emissions during construction.' The second point includes a list of measures to reduce construction vehicle pollution and emissions, such as using barging for large deliveries, restricting truck idling time, using Ultra-Low Sulfur Diesel fuel, minimizing use of diesel engines, and using the best available technology for non-road diesel engines. It also includes a 'DID YOU KNOW?' box stating that one barge has the capacity to divert up to 57 trucks from local roads. At the bottom, there are logos for NYC DDC, NYC Department of Design and Construction, NYC, and NYC Parks.



### East Side Coastal Resiliency

The East Side Coastal Resiliency (ESCR) Project is a coastal protection initiative, jointly funded by the City of New York and the federal government, aimed at reducing flood risk due to coastal storms and sea level rise on Manhattan's East Side from East 25th Street to Montgomery Street. The boundaries of this project correspond with the natural "pinch-points" in the 100-year floodplain: areas where the land is higher along the coastline, making it easier to close the system off from water entering from the north and south. The project design integrates flood protection into the community fabric, improving waterfront open spaces and access, rather than walling off the neighborhood. Construction on the East Side Coastal Resiliency project will begin in Fall 2020 and continue through 2025.

 <b>Construction Progress</b>	 <b>Resiliency &amp; Flood Protection</b>	 <b>Project Background &amp; Goals</b>	 <b>Project Design</b>
<b>Construction Notices</b> View our most recent community presentations for updates as we prepare for upcoming construction activities.	<b>Resiliency and Flood Protection</b> Learn more about ESCR's resiliency and the forward-thinking flood protection measures being implemented to protect 110,000 New Yorkers from the impacts of climate change.	<b>Project Background and Goals</b> Read about the history and background of ESCR, and the goals driving this technically complex infrastructure project.	<b>Project Design</b> From flood protection measures to bike lanes and ball fields, the ESCR project is improving open spaces and access in the Lower East Side while strengthening the city's coastline.

# NEED MORE INFORMATION?

## VISIT US AT: [www.nyc.gov/escr](http://www.nyc.gov/escr)

