

# East Side Coastal Resiliency Construction Update

CB3 Parks Committee Meeting

Virtual Meeting

September 15, 2022



# Highlights

- **ESCR Envision Gold & WEDG**
- **Work with Us Updates**
- **Overview of Contracts**
  - **Project Area 2**
  - **Project Area 1**
- **What We've Heard**

# ESCR | Envision Gold & WEDG



LEARN MORE

"It is affirmational to be honored for our work to protect New Yorkers from the impacts of climate change," said Mayor Eric Adams. "In the face of the biggest environmental threat we all face – we will continue to plan ahead, innovate, and get stuff done for New Yorkers."

**ESCR Receives Envision Gold Award ▶**

<https://www1.nyc.gov/site/ddc/about/press-releases/2022/pr-080122-ESCR-ISI.page>

# Work With Us

## [Save the Date for the 28th Annual 2022 Competitive Edge Conference](#)

**October 31, 2022, 9am – 3pm**

The must-attend event for MWLBE | DBE | SDVOB | Prime Contractors. Since 1993, the Competitive Edge Conference has linked the region's small businesses, including MWLBEs and Locally Based Enterprises, with leading decision-makers across industries.  
Pier 60 Chelsea Piers, NY

## [Getting Started: Responding to Contracting Opportunities](#)

**September 21, 2022, 11:00 am - 12:00 pm EST**

The Mayor's Office of Contract Services upcoming PASSPort vendor webinar. This webinar is part of our monthly PASSPort vendor webinar series: Getting Started: Contracting with NYC. Each webinar covers an introduction to MOCS, the basics on how to get set up in PASSPort, and the featured topic. Registration is required to attend and receive webinar access details.

## **Next ESCR Quarterly Work With Us Session end of October!**

## Careers & Procurement

The ESCR project team is committed to working with M/WBE and Section 3 firms. As we onboard our contractors, we continue to assess workforce needs.

### Current Job and Contracting Opportunities

- 001 - Printing Shop/Print Services (HNTB-LiRo)
- 003 - Senior Inspector (HNTB-LiRo)
- 004 - Inspector II (HNTB-LiRo)
- 005 - Office Engineer (HNTB-LiRo)
- 006 - Assistant Office Engineer (HNTB-LiRo)
- 009 - Administrative Assistant (IPC)
- 010 - Payroll Specialist (IPC)

View [job descriptions](#) and apply through our [online portal](#).

Visit the New York City Department of Design and Construction's (NYCDDC's) procurement site for other opportunities related to the ESCR project as they are made available.

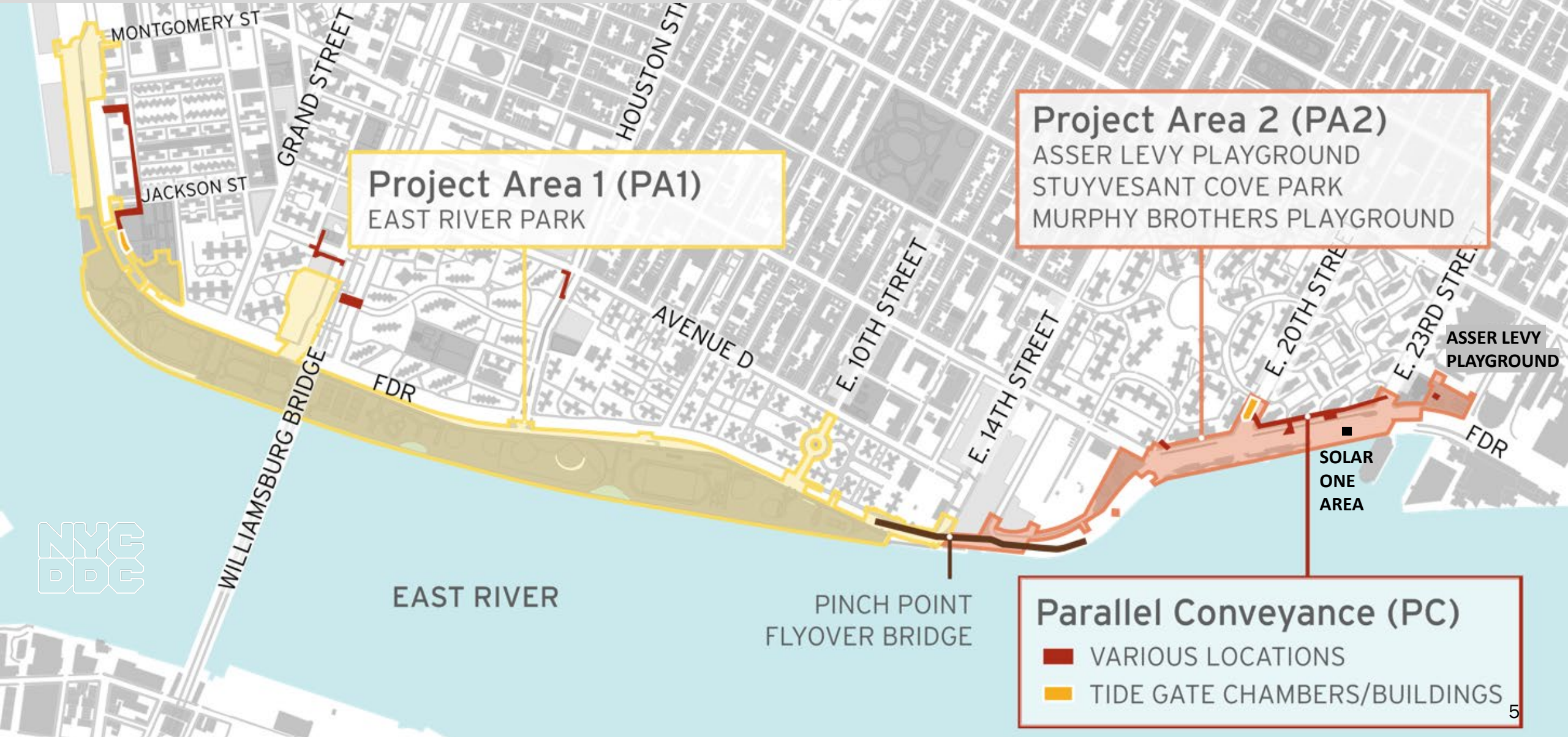
- [Find careers with NYCDDC](#)
- [Work with DDC](#)

<https://www1.nyc.gov/site/escr/contact/work-with-us.page>

Have a Question on Hiring?

[https://pima.ddccr.com/public/comment/project-comment-dynamic?project\\_id=14047&pe\\_id=2565](https://pima.ddccr.com/public/comment/project-comment-dynamic?project_id=14047&pe_id=2565)

# PROJECT AREA OVERVIEW



# Overview of Contracts

## Project Area 1 (PA1)

- NTP issued August 16, 2021
- Partial Closures:
  - East River Park south of Stanton St.
  - Greenway closure to E. 10<sup>th</sup> St.
  - Corlears Hook Park & passive lawn
- Delancey St. & Corlears Hook pedestrian bridges removed. Corlears Hook temp ped Bridge installed.
- ongoing ConEd Work
- esplanade removal, soil stabilization and deep sewer work in progress
- floodwall construction activities begin at Montgomery Street Greenway

## Project Area 2 (PA2)

- NTP issued November 2020
- Asser Levy Playground Open
  - Gate 18 installed
- Stuyvesant Cove Park including Solar One Area under construction
  - over 1,000 ft of floodwall installed
  - Gate 14 installed
  - site restoration north of E 20<sup>th</sup> St. underway
  - floodwall construction in progress north of E 20<sup>th</sup> St. underway
- **Murphy Brothers work to begin week of September 26, 2022**

## Parallel Conveyance (PC)

- contract awarded in May to NYCC JPL JV
- NTP scheduled for September 2022
- construction start anticipated in fall 2022
- contract duration is approximately 4 years

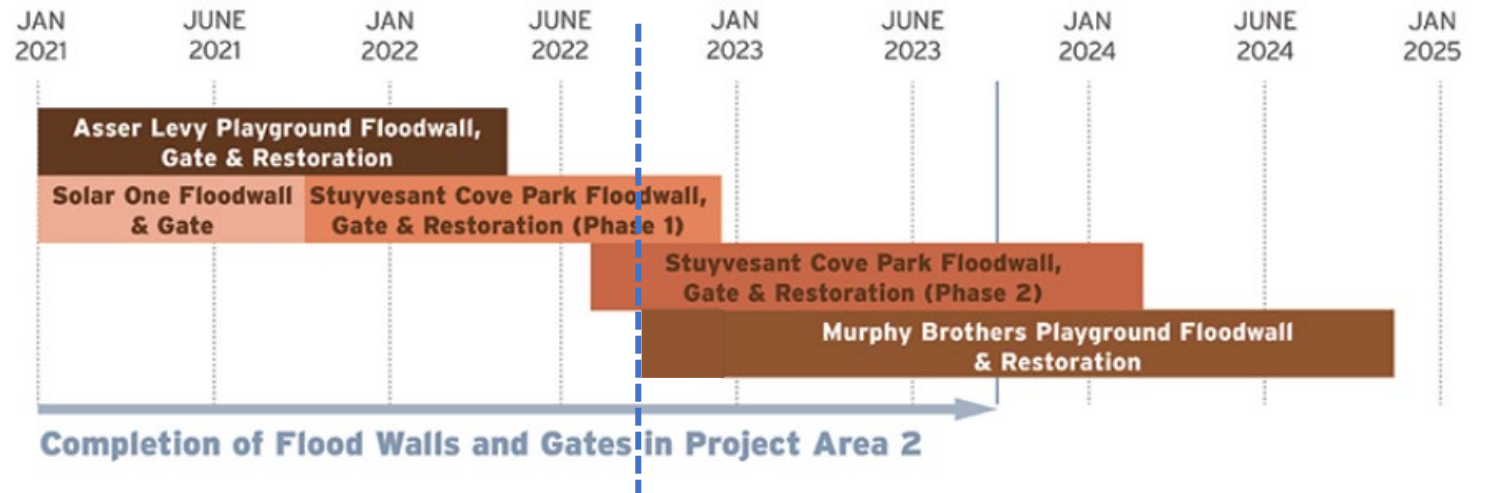
---

# Project Area 2

# PA2 | Construction Progress

ALL WORK IS SUBJECT TO CHANGE

1. Stuyvesant Cove Park north of E 20<sup>th</sup> St.:
  - seat wall construction, grading & pavement
2. Stuyvesant Cove Park south of E 20 St:
  - ongoing floodwall construction
  - **ferry access will remain open**
3. E 23<sup>rd</sup> St. Intersection:
  - utility work & floodwall construction
4. West Service Road:
  - floodwall construction
5. FDR Dr. NB exit 7 ramp:
  - pile installation and ECS work under FDR
6. E 15th Street between Ave C and FDR Dr. within Con Edison
  - sewer reconstruction
7. Avenue C between E 20 St and E 18 St
  - ConEd utility work
8. Murphy Brothers Playground
  - work to begin week of 9/26/22

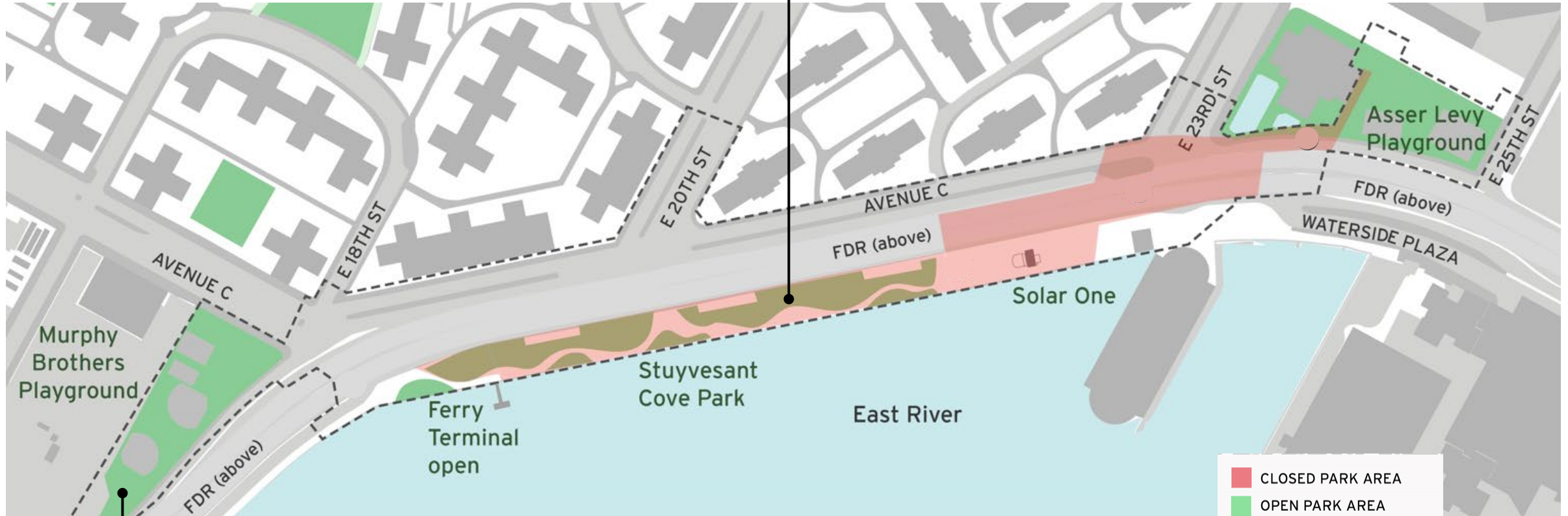




# PA2 | Open Areas

ALL WORK IS SUBJECT TO CHANGE

STUYVESANT COVE PARK NORTH OF #20<sup>TH</sup> STREET TO OPEN LATER THIS YEAR ONCE PLANTING IS COMPLETE IN COORDINATION WITH EDC AND SOLAR ONE



MURPHY BROTHERS PLAYGROUND TO CLOSE WEEK OF 9/26

# PA2 | Current Greenway Access

- Stuyvesant Cove Park under construction
- Stuyvesant Cove Park Ferry access remains open and is accessible from E18th St E20th St via the Greenway
- the Greenway from E20th St south will remain open until the Greenway from E20th St north reopens



# PA2 | Greenway Access Look-ahead

## Fall 2022

- Greenway from E 20<sup>th</sup> St heading north will reopen
- Greenway from E20th St south will close and access to East River Park from Stuyvesant Cove Park will end
- **Stuyvesant Cove Park Ferry** access will remain open
- More details and dates to follow



# PA2 | Installation of Gate 18 Asser Levy Playground



Asser Levy Playground Floodgate #18 – July 2022



---

# Project Area 1

# PA1 | September 2022 Construction Activities

ALL WORK IS SUBJECT TO CHANGE

1. Soil stabilization activities and esplanade dismantling along the waterfront. Deep sewer activities and pile install.  
**Tennis House demolition complete.**
2. Delancey Street utility, pile and abutment work (park side).
3. Corlears Hook Park pile installation for new bridge.
4. Passive lawn partial closure for utility work.
5. ConEd utility work near Montgomery Street & South Street.
6. **Montgomery St. – Cherry St. Greenway floodwall activities.**
7. Amphitheater asbestos abatement ongoing

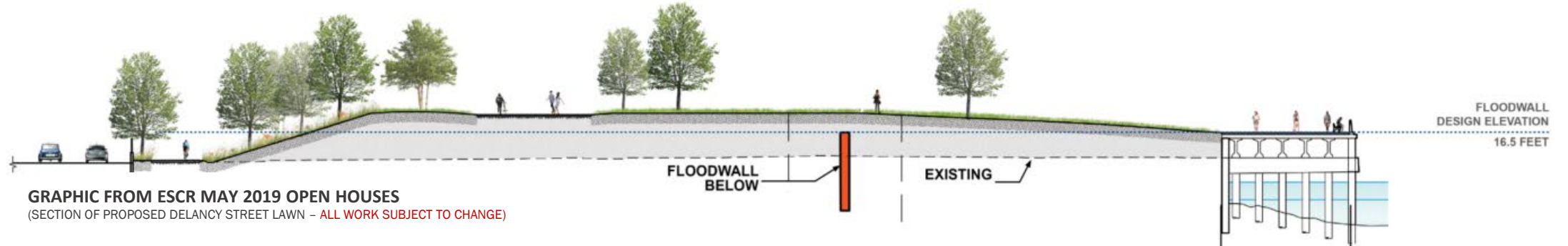
8. ConEd work in Shared Use Path E. Houston Street to E. 10th Street will continue through Q2 2023.  
Slip Ramps in use.
9. Ongoing partial FDR lane closures continue at various locations.

Weekly Bulletins & Advisories are issued with construction activities.  
Saturday work is anticipated for some work operations as indicated.



# PA1 | Construction Work Sequencing

ALL WORK IS SUBJECT TO CHANGE



## INLAND

- A. Mobilization & Removals
- B. Pile Installation, Sewer Replacement & Upgrades
- C. Floodwall Pile Installation & Concrete Foundation
- D. Concrete Floodwall
- E. Fill & Compaction
- F. Site Elements & Materials (roadway, sidewalks, parks elements)

## WATERFRONT / ESPLANADE

- A. Soil Stabilization
- B. Remove Esplanade
- C. Install new combi-wall & cap wall
- D. Install New Esplanade
- E. Fill (as needed by location)
- F. Site Elements & Materials (esplanade & parks elements)

# PA1 | Construction Photos – Stone Column Soil Stabilization

## Soil Stabilization using Stone Columns

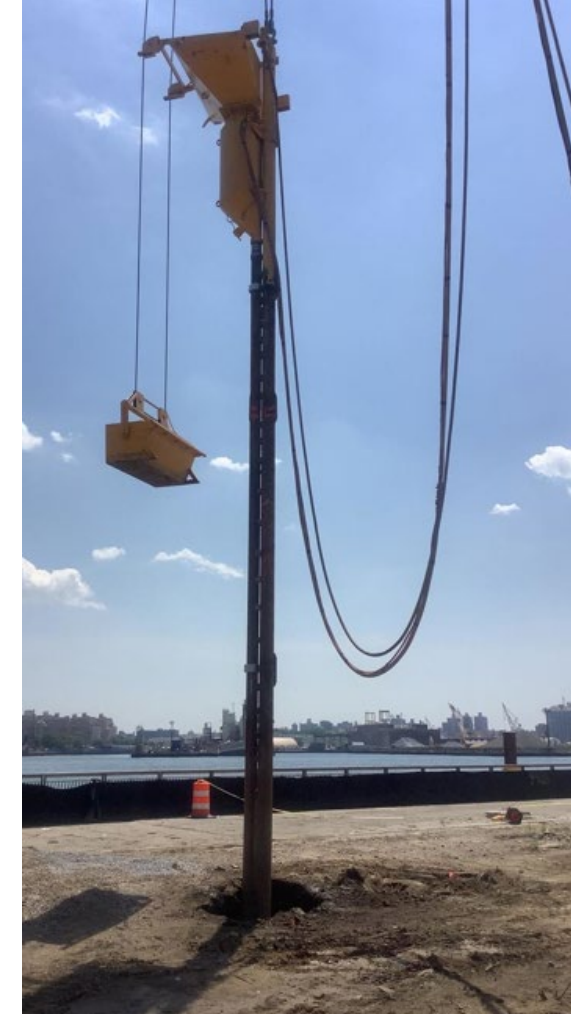
- Stone columns will be installed in a grid within the project site particularly along the waterfront
- An augering machine is used to auger a deep hole in the soil
- The hole is then filled with crushed stone which compacts to form a stone column
- The grid of stone columns stabilizes the earth to protect it from impacts of extreme weather events (flooding, earthquake, etc.)



*Pre-Drilling – July 2022*



*Prepping for stone load – July 2022*



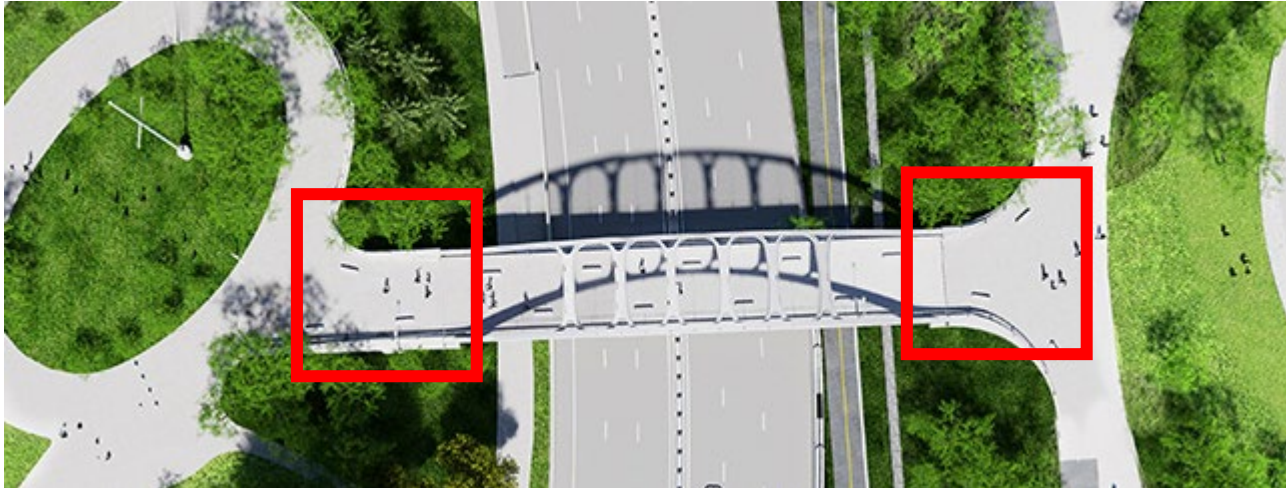
*Stone Column Placement – July 2022*

## • Newsletter:

[https://www1.nyc.gov/assets/escr/downloads/pdf/ESCR-Newsletter\\_04\\_Final.pdf](https://www1.nyc.gov/assets/escr/downloads/pdf/ESCR-Newsletter_04_Final.pdf)



# PA1 | Construction Photos – Corlears Hook Bridge Piles



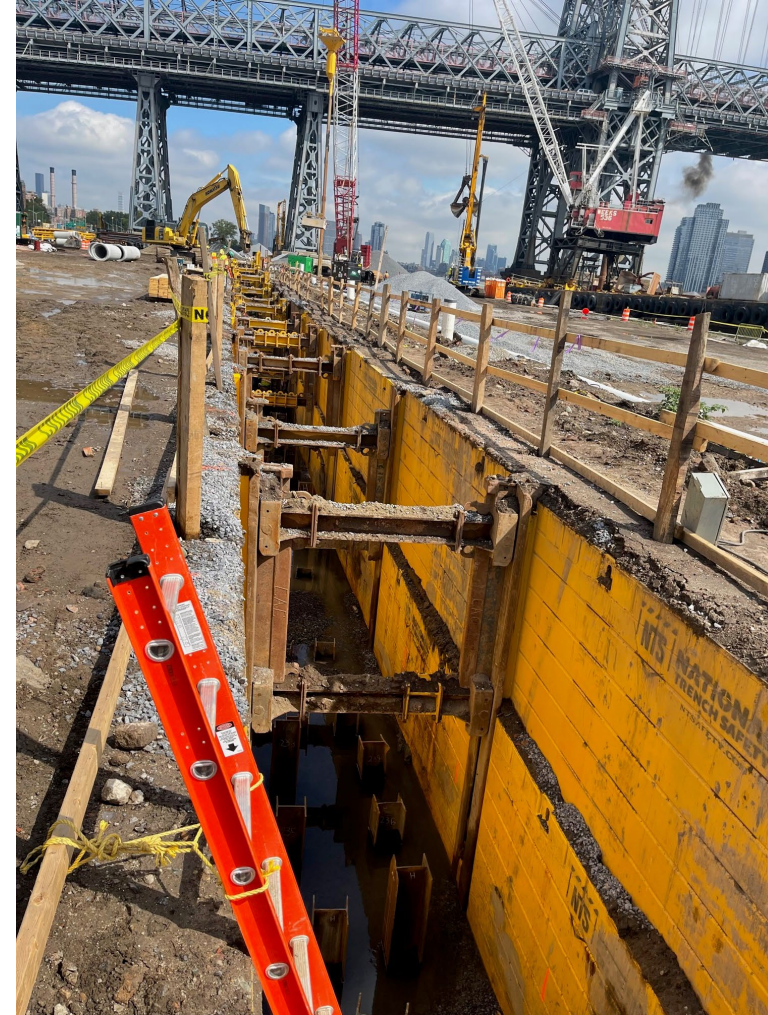
September, 2022



# PA1 | Construction Photos – Deep Sewer Excavation

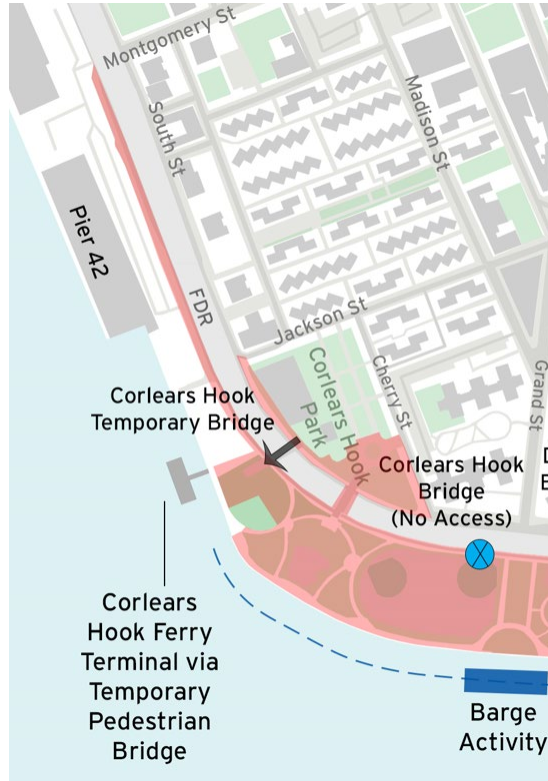


September 2022



# PA1 | Access Map and Open Areas East River Park

ALL WORK IS SUBJECT TO CHANGE



## PROJECT AREA 1 | EAST RIVER PARK PEDESTRIAN ACCESS PLAN As of September 2, 2022



Access Map: [https://www1.nyc.gov/assets/escr/downloads/pdf/ESCR\\_SANDRESM1\\_Greenway\\_AccessPlan\\_090222.pdf](https://www1.nyc.gov/assets/escr/downloads/pdf/ESCR_SANDRESM1_Greenway_AccessPlan_090222.pdf)

NYC Parks ESCR Neighborhood Recreational Resources: <https://www.nycgovparks.org/planning-and-building/planning/neighborhood-development/east-side-coastal-resiliency/map>



# PA1 | Amphitheater Asbestos Abatement

- DDC had previously taken 13 samples of materials from inside the amphitheater and found no asbestos. In 2001, the Parks Department did construction at the site and reported no asbestos.
- However, after this section of the park was fully closed and inaccessible to the public and the above ground structure was removed, we discovered a **subbasement behind the amphitheater that was previously unknown**. Work was stopped, further testing was done and it was found that some pipe insulation in the subbasement contained asbestos and has to be removed.
- The public's safety is a priority and our team will ensure abatement work will be done in **accordance with all local, state, and federal guidelines**, and safely contain and dispose of material. All asbestos materials is being isolated and contained in a fully enclosed Containment Zone and within this zone materials will be placed in sealed containers and trucked offsite.
- In addition to the continued use of air monitors in the work area, a **licensed asbestos abatement contractor has been hired to complete**. We expect the work to take **about six weeks**, during which time all regulations for asbestos removal will be followed, including air containment and air monitoring. An independent consultant has been hired to monitor the work.
- The public may see workers in Tyvek suits as it is necessary for these individuals to wear protective gear because they will be in close proximity with the asbestos-containing materials on a daily basis. Personal Protective Equipment (PPE) is also mandatory for their work.
- The work is progressing. All operations remain on schedule. Independent Inspection/Air Monitoring continues throughout the area and NYC DEP on-site inspection has been successfully performed. There will be approximately 4-5 more weeks of removal activities.



# PA1 | Construction Activities through 2022

ALL WORK IS SUBJECT TO CHANGE

1. In progress soil stabilization, sewer and pile activities continue.
2. Delancey Street utility work & reconstruction of new bridge.
3. Continue Corlears Hook Park partial closure.  
Corlears Hook Bridge reconstruction.
4. Passive lawn utility work.
5. **Montgomery Street & Greenway floodwall construction.**



Montgomery St. / South St. floodwall and flood gate



Southern Reaches of floodwall along Greenway

# PA1 | Construction Activities through 2022

ALL WORK IS SUBJECT TO CHANGE

1. ConEd work in Shared Use Path north of E Houston Street to E 10<sup>th</sup> Street will continue for next 6-8 months.
2. Houston Street Retaining Wall activities.
3. Ongoing partial FDR lane closures continue.

Weekly Bulletins & Advisories are issued with construction activities.



*Houston St retaining walls*

# PA1 | Community Impacts

- Detours and lane closures
  - Vehicular travel lane closures, detours and new traffic patterns
  - Cyclists and pedestrian detours
  - Signage will be posted in advance within the affected areas. Traffic Enforcement Agents and flaggers will be present when necessary to assist vehicles and pedestrians
- Public transportation will be maintained at all times including Ferry landings
- Emergency vehicle and pedestrian access to sidewalks will be maintained at all times
- Water Service Interruptions:
  - During the project there may be some service interruptions. To allow for water line replacement, existing water service must be temporarily shut off.
  - Advance notice will be provided before any service interruption. Water service will be restored at the end of each night.
- **Environmental Monitoring**
  - Air, noise, and vibration monitors are active 24 hours/day, 7 days/week
  - Air monitoring summaries are available on the ESCR Environmental Monitoring webpage, with verbal updates provided at Community Advisory Group Meetings
  - The project follows all federal, state and local guidelines. To date construction activities have not exceeded National Ambient Air Quality Standards
  - The ESCR Environmental Fact Sheet can also be found on the ESCR website.

<https://www1.nyc.gov/site/escr/project-updates/environmental-monitoring.page>




Community health and safety is of the utmost importance to the City of New York, the NYC Department of Design and Construction (NYC DDC), and the East Side Coastal Resiliency (ESCR) team. The ESCR project is committed to providing the community with quarterly air quality monitoring summaries throughout construction.

The screenshot displays the 'Environmental Monitoring' section of the East Side Coastal Resiliency Project website. It features a navigation menu with 'Project Updates' selected. The main content area is titled 'Air Quality' and includes a list of 'PA1 Construction Notices' and 'PA2 Construction Notices'. A section titled 'Air Quality' explains the project's commitment to monitoring air quality and lists four key measures: 1. Air Quality Management Plan, 2. Daily Air Quality Mitigation Techniques, 3. Daily Air Quality Monitoring, and 4. Air Quality oversight by environmental agencies. Below this, there are sections for 'Project 1 Area Monitoring Report' and 'Project 2 Area Monitoring Report', each with a list of reports and download links. A 'Local Law 72' section mentions compliance with federal, state, and local guidelines. On the right, there is a detailed infographic titled 'Air Quality Monitoring' which includes a diagram showing 'Monitor A (UPWIND)' and 'Monitor B (DOWNWIND)' measuring 'NET PARTICULATE MATTER'. The infographic also lists 'Steps to reduce construction vehicle pollution and emissions' and 'Steps to reduce and control dust'. At the bottom, there are logos for NYC DDC, NYC Department of Design and Construction, NYC, and NYC Open City.

# WHAT WE'VE HEARD

- **Montgomery St. construction trucks:** trucks for soil disposal are going in and out of the slip ramps due to greenway work. Our CCLs have reached out to Pier 42 and Pier 36 about this as well.
- **Floodwall construction:** see newsletter [https://www1.nyc.gov/assets/escr/downloads/pdf/ESCR-Newsletter\\_04\\_Final.pdf](https://www1.nyc.gov/assets/escr/downloads/pdf/ESCR-Newsletter_04_Final.pdf)
- **Tabling and Community Construction Liaisons (CCLs)**



The diagram shows a cross-section of a floodwall. On the left, the 'INLAND' area includes a road with trees and a 'FLOODWALL' structure. On the right, the 'WATERFRONT / ESPLANADE' area shows an 'EXISTING' structure and a 'FLOODWALL DESIGN ELEVATION 16.5 FEET'. Below the diagram are two columns of construction tasks for each area.

| INLAND                                                            | WATERFRONT / ESPLANADE                                    |
|-------------------------------------------------------------------|-----------------------------------------------------------|
| A. Mobilization & Removals                                        | A. Soil Stabilization                                     |
| B. Pile Installation, Sewer Replacement & Upgrades                | B. Remove Esplanade                                       |
| C. Floodwall Pile Installation & Concrete Foundation              | C. Install new combi-wall & cap wall                      |
| D. Concrete Floodwall                                             | D. Install New Esplanade                                  |
| E. Fill & Compaction                                              | E. Fill (as needed by location)                           |
| F. Site Elements & Materials (roadway, sidewalks, parks elements) | F. Site Elements & Materials (esplanade & parks elements) |

PA1 Inland and Waterfront Construction Work Sequencing

### Construction Sequence for East River Park


In [Newsletter 1 & 2](#), we detailed the step-by-step sequence of tasks for the **PA2 floodwall construction**:

- utility relocation work
- pile installation
- floodwall foundation
- floodwall construction
- park and roadway reconstruction

For **Project Area 1 (PA1)**, there are three construction work sequences occurring simultaneously:

1. Greenway Floodwall – above grade floodwall constructed in a sequence similar to PA2 sequence above (along the Greenway from Montgomery Street to Cherry Street)
2. East River Park Inland – floodwall within raised park, see graphic above for sequencing (north of Cherry Street)
3. East River Park Waterfront/Esplanade – see graphic above for sequencing (north of Cherry Street)

For the **Inland operations**, the contractor has completed a significant portion of the mobilization and removals and has begun the sewer replacement/upgrade and associated pile install work. The graphic here shows how the piles and pile cap will support the upgraded sewer lines which are part of




Proposed Sewer (may be pipe or concrete boxes)      Continuous Concrete Pile Cap to support sewer

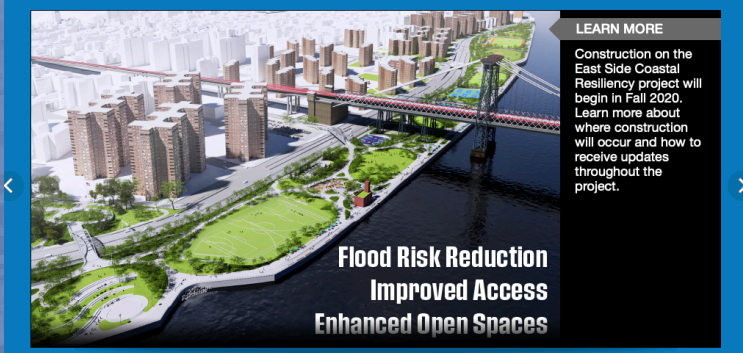
the larger parallel conveyance system installed to improve drainage during flooding events. For **Waterfront operations**, the esplanade removal is well underway and soil stabilization is just beginning.

### What is Soil Stabilization?

Soil Stabilization is a process to improve the solidity of the existing soil. ESCR is installing a grid of **crushed stone columns** along the waterfront where coastal flooding and other extreme weather events could potentially impact the existing soil stability. First, an auguring machine is used to auger a deep hole in the soil. Next, the stone column rig injects a hollow pipe into the soil. Lastly, the crushed stone is fed into and vibrated down the pipe into the existing soil to form a stone column.







# NEED MORE INFORMATION?

## VISIT US AT: [www.nyc.gov/escr](http://www.nyc.gov/escr)

### East Side Coastal Resiliency

The East Side Coastal Resiliency (ESCR) Project is a coastal protection initiative, jointly funded by the City of New York and the federal government, aimed at reducing flood risk due to coastal storms and sea level rise on Manhattan's East Side from East 25th Street to Montgomery Street. The boundaries of this project correspond with the natural "pinch-points" in the 100-year floodplain: areas where the land is higher along the coastline, making it easier to close the system off from water entering from the north and south. The project design integrates flood protection into the community fabric, improving waterfront open spaces and access, rather than walling off the neighborhood. Construction on the East Side Coastal Resiliency project will begin in Fall 2020 and continue through 2025.

|                                                                                                                                             |                                                                                                                                                                                                                      |                                                                                                                                                              |                                                                                                                                                                                                              |
|---------------------------------------------------------------------------------------------------------------------------------------------|----------------------------------------------------------------------------------------------------------------------------------------------------------------------------------------------------------------------|--------------------------------------------------------------------------------------------------------------------------------------------------------------|--------------------------------------------------------------------------------------------------------------------------------------------------------------------------------------------------------------|
| <br><b>Construction Progress</b>                          | <br><b>Resiliency &amp; Flood Protection</b>                                                                                       | <br><b>Project Background &amp; Goals</b>                                | <br><b>Project Design</b>                                                                                                |
| <b>Construction Notices</b><br>View our most recent community presentations for updates as we prepare for upcoming construction activities. | <b>Resiliency and Flood Protection</b><br>Learn more about ESCR's resiliency and the forward-thinking flood protection measures being implemented to protect 110,000 New Yorkers from the impacts of climate change. | <b>Project Background and Goals</b><br>Read about the history and background of ESCR, and the goals driving this technically complex infrastructure project. | <b>Project Design</b><br>From flood protection measures to bike lanes and ball fields, the ESCR project is improving open spaces and access in the Lower East Side while strengthening the city's coastline. |

